

# DX News

Serving DX'ers since 1933



Volume 83, No. 12 • March 7, 2016 • (ISSN 0737-1639)

## Inside this issue . . .

2 ... AM Switch	19 ... LBI 14 DXPedition Report	28 ... Geomagnetic Indices
5 ... Domestic DX Digest East	24 ... DX Toolbox	28 ... Domestic DX Achievements
12 ... Domestic DX Digest West	25 ... From the Archives	30 ... A Wave of Discontent
17 ... International DX Digest	26 ... FSL for PL-380 (ct'd)	31 ... FCC Silent List/New CP List

**From the Publisher:** We'll now start our spring slowdown, next issue is in *three* weeks. But we have a strong, full issue here and – if you keep supporting your favorite columns – we'll have plenty of material to fill our spring issues.

**2016 DXers Gathering:** DXers in AM, FM, and TV, including the NRC, IRCA, WTFDA, and DecaloMania will gather on September 9-11, 2016 in Kansas City, MO. Plan to arrive on Thursday for 3 nights, and we end Sunday at noon.

The Gathering will be held at the Hyatt Place Kansas City Airport, 7600 NW 97th Terrace. To reserve your hotel room, call 1-816-891-0871 x3 and ask for the Group Rate for the National Radio Club, group code G-NRCC. The deadline for hotel reservations is August 18. Rates are \$99.00 per night for 1 to 3 persons per room, plus taxes and fees. Free airport transfers and breakfast each morning.

Registration: \$55 per person which includes a free Friday evening pizza party and Saturday evening banquet. Checks made payable to "National Radio Club" and sent to Ernest J. Wesolowski, 13312 Westwood Lane, Omaha, NE 68144-3543. Please mention which club(s) you belong to for club treasury info. Dale Hamm W5LN and Ernie are your hosts.

**Back Issues and Other Things Available:** Wayne Heinen's house cleaning went on hold

when he had his hip replaced, but now the basement cleaning continues. The following issues of *DX News* are still available: Volumes 54-57 (1968-1989); 41 (Partial 1973); 22-37 (1954-1969); and 15-18 (1947-1950). We also have available copies of "The Radio Book," the 2008-2009 and 2009-2010 editions. And from the huge collection of the late Kermit Geary, we have many postcards that were included with his many veries. If there is a postcard collector who wishes these they are also available for the cost of postage. But, if you speak for any items, Wayne needs your payment and shipping instructions no later than **March 15**. Any items not claimed by that date will be heading to the recycle bin. Contact Wayne at the NRC P.O. Box on the back page.

## Membership Report

"My 55th year!" – Chuck Reh.

**New Members:** Welcome to Michael Irizarry, Barrington Hills, IL; and Randy Trank, Winnebago, IL.

**Rejoining Member:** Welcome back to Stephen Wynn, Lakewood, CO.

**Renewing Members:** Thanks for the continued support of Charles L. Bartlett; Alex Calabrese WA2ADS; Brian Dellit; Stephen Francis; Arthur Jackson; Jefferson E Lewis; Forest Osborn; Charles Reh; Mike Strand; and Tim Tomljanovich.

## 36th Edition of the National Radio Club's AM Radio Log Is Available and Shipping!



The NRC *AM Log* is a comprehensive list of AM radio stations in the United States and Canada, with all the information a DXer needs – power, schedule, format, slogan, networks, address, and more. And it's continually updated through the AM Switch column here in *DX News* (and Interim AM Switch weekly on e-DXN.com).

Order by snail mail by check or money order in U.S. funds to National Radio Club, P.O. Box 473251, Aurora, CO 80047-3251 or order using your Pay Pal account at [www.nrcdxas.org](http://www.nrcdxas.org). To U.S. addresses, \$22.95 to members, \$28.95 to non-members, add \$4.00 for Priority Mail delivery; to Canadian addresses it's US\$36.25 and overseas US\$41.75.

## Volume 83 DX News Schedule

No	Deadline	Pub. Date	15	Apr. 29	May 9	18	July 22	Aug. 1
13	Mar. 18	Mar. 28	16	May 27	June 6	19	Aug. 19	Aug. 29
14	Apr. 8	Apr. 18	17	June 24	June 6	20	Sept. 9	Sept. 19

Publishers' deadline is 2400 ELT on Friday nights – *DX News* posted that weekend to e-DXN.com, and in most U.S. mailboxes on or around the Monday masthead date.

# AM Switch

Info to David Yocis, 9412 Ferry Landing Ct., Alexandria, VA 22309, [NRCDXNews@gmail.com](mailto:NRCDXNews@gmail.com)  
 Canadian information from CRTC complied by Shawn Axelrod and Dan Sys  
 NRC AM Log updates from Wayne Heinen, [amradiolog@nrcdxas.org](mailto:amradiolog@nrcdxas.org)

## Official updates from the FCC and the CRTC

### CALL CHANGES

- 990 WXCT CT Southington – Call change to WNTY (Feb. 11); had these calls until 2003.  
 1050 WBNM AL Alexander City – Call change to WLMA (Feb. 18).  
 1160 KFXE IA Waukon – Call change to KMRV (Feb. 24).  
 1270 KFSQ CA Thousand Palms – Call change to KVGH (Feb. 23); station is silent.

### CONSTRUCTION PERMITS FOR EXISTING STATIONS

CPs fully licensed and on the air:

- 820 WCPT IL Willow Springs – CP for U2 5800/1500, day site moving to 41-58-53/87-46-20, is on the air.  
 1340 WNBH MA New Bedford – CP for U1 1000/960, moving to 41-38-29/70-57-34, is on the air.  
 1570 KMCD IA Fairfield – CP for U1 250/110, coordinates to 41-00-20/92-01-07, is on the air.

CP built, nearing final licensing:

- 920 WEZZ AL Brantley – Applies for license to cover CP with D1 450, moving from Monroeville AL and 930 kHz.

CPs granted:

- 630 WREY MN St. Paul – Granted CP for U4 5000/1600 from a new site (44-44-58/92-59-40).  
 1490 WCHM GA Clarkesville – Granted CP for U1 790/790.  
 1570 WMVX MA Beverly – Granted CP for U1 31000/102, moving to Methuen MA and 42-40-26/71-11-26.  
 1580 KHEP AZ Tempe – Granted CP for U1 50000/95 from a new site (33-29-36/112-08-18).

Applications for CP filed:

- 980 WHAW WV Lost Creek – Applies for U1 25000/46 from a new tower at 39-01-39/80-26-34, replacing similar existing CP that has expired.  
 1050 KEYF WA Dishman – Applies for U1 25000/360 from its old tower at 47-35-58/117-22-38, contingent upon FCC approval of the station's impending sale.  
 1310 KIHP AZ Mesa – Applies for U1 3400/260, using KDUS-1060 tower at 33-21-43/111-58-01.  
 1480 KRXR ID Gooding – Applies for U1 10000/100 on 1470 kHz, CoL to Kuna ID and moving to a new tower to be built at 43-27-35/116-13-19.  
 1510 KSPA CA Ontario – Applies for U4 10000/6000, replacing CP that has expired.

### SPECIAL TEMPORARY AUTHORITY (STA)

- 567 KGUM GU Agaña – Applies for STA with U1 5000/5000 from a temporary antenna; tower fell in a storm on Jan. 29.  
 1050 KEYF WA Dishman – Granted STA with U1 4000/260 from old tower, 47-35-58/117-22-38.  
 1210 KHKR UT Washington – Granted STA with reduced day power (now using U1 250/250).

Applications to extend existing STAs were received from WIOD-610 Miami FL (U4 10000/10000 to overcome Cuban QRM); WTLN-950 Orlando FL (U2 12000/10000 to overcome Cuban QRM); KAAV-1090 Little Rock AR (U1 50000/10000); WZHF-1390 Arlington VA (CP site with "substantially adjusted" parameters); KMYC-1410 Marysville CA (U1 1250/250); and WRHC-1550 Coral Gables FL (U1 1800/125).

Previously reported applications to extend existing STAs were granted to WDIZ-590 Panama City FL, WKZO-590 Kalamazoo MI, WRJZ-620 Knoxville TN, WMEN-640 Royal Palm Beach FL, WQNO-690 New Orleans LA, WQXI-790 Atlanta GA, WFTL-850 West Palm Beach FL, KUFO-970 Portland OR, WLMA-1050 Alexander City AL, WRIE-1260 Erie PA, KFRN-1280 Long Beach CA, WTKS-1290 Savannah GA, KKNS-1310 Corrales NM, KSDT-1320 Hemet CA, WINT-1330 Willoughby OH, WYOS-1360 Binghamton NY, and WRXB-1590 St. Petersburg Beach FL.

### SILENT STATIONS

Formerly silent stations informing the FCC that they are no longer silent:

- 920 WEZZ AL Brantley – Silent Feb. 6 (2015) on 930 kHz; on the air here with CP Jan. 30.

- 1030 WOSO PR **San Juan** – Silent Oct. 21 (2014); on the air with STA Oct. 21 (2015).  
 1480 KBXD TX **Dallas** – Silent Dec. 21 (2015); on the air with new transmitter Feb. 20.  
 1490 WPAK VA **Farmville** – Silent Aug. 7 (2015); on the air with reduced power Aug. 29 (2015).

Stations informing the FCC that they are silent:

- 1360 WHCG GA **Metter** – Silent Feb. 5, tower collapsed during tower work.  
 1500 WASN OH **Youngstown** – Silent Feb. 15 during further transmitter repairs.

Skip Dabelstein sends a clipping from the Tucson *Star* saying that KEVT-1210 went silent Feb. 25 and plans to move the "PowerTalk 1210" format to the Internet.

#### COORDINATE CORRECTION

- 900 WDLS WI **Wisconsin Dells** – Applies for CP to correct coordinates to 43-38-17/89-43-17.  
 970 WKHM MI **Jackson** – Applies for CP to correct coordinates to 42-11-34/84-25-44.  
 1370 KAWL NE **York** – Applies for CP to correct coordinates to 40-50-34/97-35-17.

#### CANADA

- 1140 CBI NS **Sydney** – Nested repeater on 92.1 MHz is on the air; 1140 operation unaffected.  
 1340 CBEY ON **Moosonee** – LPRT applies to move to 99.9 MHz FM.  
 1450 CHOU QC **Montréal** – Granted CP for nested repeated on 104.5 MHz in the Montréal borough of Saint-Léonard; not a move to FM, CHOU will stay on 1450 kHz.

## *NRC AM Log Updates*

- 570 WNAX SD **Yankton** – Add network Ne.  
 580 KANA MT **Anaconda** – Networks to WW1/Ns. (JJR)  
 600 KCOL CO **Wellington** – Slogan to "NewsTalk."  
 610 KCSR NE **Chadron** – Add network Ne.  
 620 WDNC NC **Durham** – Group to // 620 The Buzz.  
 700 KHSE TX **Wylie** – Delete Group.  
 710 WEGG NC **Rose Hil** – Slogan & Group to // Surge 100.  
 KXMR ND **Bismarck** – Slogan to "Fox Sports Radio," add network Fan; delete // KFXN-FM-100.3 at times.  
 740 KVOX ND **Fargo** – Add network Fan.  
 780 WJAG NE **Norfolk** – Add network Ne.  
 790 WSGW MI **Saginaw** – Networks to A/C/Mi/Mf/Mt/WW1/Mt/DR/C2C.  
 810 WMGC TN **Murfreesboro** – Slogan to "El Jef."  
 WPIN VA **Dublin** – Format to SPT (ex-C&W); networks to ESPN; Slogan & Group to // ESPN Blacksburg. (KK)  
 840 WKTR VA **Earlysville** – Format to REL (ex-C&W); networks to CSN.  
 850 WFTL FL **West Palm Beach** – Delete slogan; networks to WW1/CM/RER.  
 900 WCBX VA **Bassett** – Networks to CSN.  
 910 WFDF MI **Farmington Hills** – Format to UC:TLK (ex-UC:REL/GOS); slogan to "910 AM Superstation."  
 920 KSHO OR **Lebanon** – Slogan to "Unforgettable 920."  
 930 KOGA NE **Ogallala** – Add network Ne.  
 950 KCAP MT **Helena** – Slogan to "K-Cap," "News Radio."  
 960 WRNS NC **Kinston** – Slogan to "Country 95.1."  
 990 WJEH OH **Gallipolis** – Format to GOS (ex-Rock/OLD); slogan to "Joy 990."  
 KFCD TX **Farmersville** – Delete Group.  
 1030 KCWJ MO **Blue Springs** – Format to C&W (ex-REL/GOS); slogan to "Real Country 1030," networks to WW1.  
 1050 WJSB FL **Crestview** – Slogan to "Good Country."  
 1080 KOAK IA **Red Oak** – Add network Ne.  
 1110 KFAB NE **Omaha** – Add network Ne.  
 KVTX TX **Mineral Wells** – Format to Asian (ex-ETH); delete Group.  
 1230 KFSP MN **Mankato** – Add network Fan.  
 KWIX MO **Moberly** – Slogan to "Information Radio," adds // KWIX-FM-92.5.  
 KTNC NE **Falls City** – Add network Ne.  
 KSIX TX **Corpus Christi** – Group to // SportsRadioCC.  
 1240 KODY NE **North Platte** – Add network Ne.  
 1270 KFAN MN **Rochester** – Add network Fan.





- 1280 WSUX DE Seaford – Format to NOS (ex-AC); slogan to “Best Music Mix,” nets to WW1.  
 KDKD MO Clinton – Format to Rock/OLD (ex-OLD); slogan to “Classic 1280.”  
 KCNI NE Broken Bow – Add network Ne.  
 WSAT NC Salisbury – Format to OLD (ex-NOS); slogan to “Memories 1280 & 1410.”
- 1290 WNBN MS Meridian – Format to UC:GOS/REL/BLUES (ex-UC:GOS).
- 1300 KBRL NE McCook – Add network Ne.
- 1310 KGMT NE Fairbury – Add network Ne.
- 1340 KRBT MN Eveleth – Add network Fan.  
 KHUB NE Fremont – Add network Ne.  
 KSID NE Sidney – Add network Ne.
- 1350 KBRX NE O’Neill – Add network Ne.
- 1370 KAWL NE York – Add network Ne.
- 1380 WPHM MI Port Huron – Slogan to “News Talk Sports.”
- KLIZ MN Brainerd – Add network Fan.  
 KUVR NE Holdrege – Add network Ne.
- 1390 KXSS MN Waite Park – Add network Fan.
- 1400 KBRB NE Ainsworth – Add network Ne.
- 1410 WTIX NC Concord – Format to OLD (ex-REL); slogan to “Memories 1280 & 1410.”
- 1420 KIGO\* ID St. Anthony – Adds // K244BJ-96.7; delete // KRXR-1480.
- 1430 WNFO SC Sun City-Hilton Head- Slogan to “Asi Suen La Ke Buena.”  
 WKEX VA Blacksburg – Slogan & Group to // ESPN Blacksburg. (KK)
- 1440 KKXL ND Grand Forks – Add network Fan.
- 1450 KBUN MN Bemidji – Add network Fan.  
 WELY MN Ely – Add network Fan.  
 KIRX MO Kirksville – Adds // K259BF-99.7.
- 1460 KXPN NE Kearney – Add network Ne.
- 1480 WERM AL Mobile – Slogan to “Gospel 1480.” (TK)  
 KRXR\* ID Gooding – Adds // K267BG-101.3; delete // KIGO-1420.  
 WCNS PA Latrobe – Format to TLK (ex-OLD); slogan “NewsTalk,” nets to SRN/CM/RER.
- 1490 KQDS MN Duluth – Add network Fan.  
 KLGR MN Redwood Falls – Format to C&W/TLK (ex-C&W); delete slogan; add // K240DJ-95.9; networks to A/Mn/Bf/LCL.  
 KFCR SD Custer – Format to Rock (ex-AC).
- 1530 KQSC CO Colorado Springs – Adds // K294CH-107.3.  
 KQNK KS Norton – Add network Ne.
- 1540 WBCO OH Bucyrus – Format to C&W (ex-NOS); slogan to “Country Legends,” adds // W222CC-92.3.  
 KGBC TX Galveston – Format to OLD (ex-Chinese); delete slogan.
- 1550 KICS NE Hastings – Add network Ne.  
 WCLY NC Raleigh – Slogan to “1550 The Ticket,” networks to CBS/FSR/ESPN/Jr.
- 1580 WTCL FL Chattahoochee – Format to Rock/OLD (ex-Silent); slogan to “Sunny Radio.”
- 1590 KCTY NE Wayne – Add network Ne.
- 1600 KNCY NE Nebraska City – Add network Ne.  
 KRFS NE Superior – Add network Ne.



\* – I split KRXR and KIGO as no longer parallel because I couldn’t find anything to indicate that they were indeed a [parallel operation. Anyone know for sure?

### Defunct Group

// Bringing the Community Together – This group was reported by some of our sources, but monitoring shows that KFCD and KHSE are both SS:REL but not // and KVTT remains Asian.

### New Groups

// 620 The Buzz – WDNC-620, W243DK-96.5, W257CS-99.3  
 // ESPN Blacksburg – WKEX-1430, WPIN-810, W231BC-94.1(KK)  
 // SportsRadioCC – KSIX-1230, K277BL-103.3, K241AT-96.1  
 // Surge 100 – WEGG-710, W263BE-100.5, WSTK-104.5

### New Networks

Fan – Fan Radio Network – Regional Sports MN/ND Flagship KFXN-FM (SA)  
 Ne – Nebraska News Network – Nebraska News & Sports (SA)



Thanks to Shawn Axelrod (SA), Bill Hale, Wells Perkins, Terry Krueger (TK), John J Rieger (JJR), Kraig Krist (KK).

# Domestic DX Digest – East

Mike Brooker, Editor

99 Wychrest Avenue, Toronto ON M6G 3X8 (Canada), [patria1818@yahoo.com](mailto:patria1818@yahoo.com)

Loggings of U.S. and Canadian stations by DXers located in the Eastern and Atlantic Time Zones.  
All times are Eastern Local Time (ELT).

## REPORTERS

- BC-NH** **Bruce Conti, Nashua** – Excalibur SDR, MWDX-5, variable termination SuperLoop antennas northeast and south.
- SC-IN** **Steve Chappell, McCordsville** – Home built receiver, K9AY loop antenna.
- HF-MI** **Harold Frodge, Midland** – Drake R8B + 125 ft. bow-tie; 60 ft. RW & 185 ft. center-fed RW
- TF-NH** **Tony Fitzherbert, Campton** – Grundig S-450 DX, Grundig AR-200 loop
- JK-WV** **Joe Kremer, Bridgeport** – Hammarlund HQ-180A, AOR LA380 loop.
- KK-VA** **Kraig Krist, Manassas** – Winradio G33DDC SDR, Wellbrook ALA-1530S+ Imperium Loop
- TLK-FL** **Terry Krueger, Clearwater** – NRD-535, IC-R75, roof dipole, active loop
- PS-ON** **Paul Snider, Welland** – ICOM R75, Pixel RF Pro-1B loop, MFJ-1020C tuner
- NjW-ON** **Niel Wolfish, Toronto** – WinRadio Excalibur G31DDC + Wellbrook Loop
- DY-VA** **David Yocis, Mount Vernon** – Perseus, longwires
- MKB-ON** **Mike Brooker, Toronto** – Grundig G5, Grundig YB-400PE, Sony SRF-39FP, Panasonic RF-2200 (receiver emeritus)

Follow me on Twitter! @patria1818 DX-related tweets will be hash-tagged #MWDX.

Friend me on Facebook! [www.facebook.com/keval.mike](http://www.facebook.com/keval.mike)

## UNID

- 950 unID** -- - 2/23 2017 – "My Love Is True (Truly For You)" by the Temptations followed by male DJ, fade. Back up briefly 2051 with "This Magic Moment" by The Drifters and 2114 with "Kiss and Say Goodbye" by Manhattan Transfer. Seemingly points NNE. Suspect WGUN, Valdosta, GA as heard around sunrise last February with this format and Magic 95 slogan. **(TLK-FL)**
- unID** -- - 2/23 2018 – Someone with News/Talk format, poor and mixing with the Motown-Soul Oldies station. Seemingly something syndicated talk, and at 2048, man with, "... on AM... News Talk... AM..." Also seemingly points NNE. **(TLK-FL)**
- 1330 unID** -- - 2/25 1827 – Woman in Russian up briefly. Probably WKTA Evanston, IL. **(HF-MI)**

## LOGGINGS

- 620 WDAE FL** **Saint Petersburg** – 2/17 0625 – Downtown Tampa traffic report, sports talk (Tampa Bay Rays), numerous IDs: "Tampa Bay Sports Radio, WDAE." **(JK-WV)**
- WGCV SC** **Cayce** – 2/25 0055 – Gospel music, ToH ID "WGCV 620 AM, 105.1 FM," more gospel music, another ID at 0109, more music, "We keep you inspired and informed" and another ID at 0118, some news items such as gas price and cities with the worst bedbugs. Fair, mostly on its own with some slop from CKTB-610. **(PS-ON)**
- 640 WMFN MI** **Zeeland** – 2/11 2024 – Spanish music, way atop for four minutes before fading under a number of talk programs. **(TF-NH)**
- 730 KWOA MN** **Worthington** – 2/20 0200 – Alone into ID, "This is the CBS Radio network affiliate for the tri state area AM 730 KWOA Worthington" into CBS News. MOYL heard. **(SC-IN)**
- 740 KTRH TX** **Houston** – 2/21 0700 – Very good with male canned, "This is News Radio 740, KTRH, Houston" ID at tune-in, traffic report, weather, into ABC News. **(TLK-FL)**
- 760 WCHP NY** **Champlain** – 2/12 1755 – Mixing with WJR and UNID Spanish station, male "WCHP 7-60 AM Champlain..." ID. **(KK-VA)**
- WETR TN** **Knoxville** – 2/13 1800 – ToH ID as "talk radio 92.3 and AM 760, WETR-Knoxville" and Fox news audible under WJR. **(NjW-ON)**


- 770 WLWL NC **Rockingham** – 2/12 1749 – In WABC mix with mention of "... right here on WLWL." At 1801, noted male with what sounds like WLWL sign-off. **(KK-VA)**
- WAIS OH **Buchtel** – 2/21 2314 – On way after sunset with older C&W music, "WAIS" jingle sung by female at 2319, more C&W. Very poor mostly under WABC. **(PS-ON)**
- 780 WCKB NC **Dunn** – 2/12 1733 – In WAVA/WWOL/WBBM mix with ID as "WCKB...Where Christians Keep Believing." **(KK-VA)**
- WWOL NC **Forest City** – 2/12 1744 – In WAVA/WCKB/WBBM mix with station promo: "That's right. You found it. Your Gospel voice of the Carolina foothills...WWOL radio." **(KK-VA)**
- 790 WTSK AL **Tuscaloosa** – 2/12 1830 – Presumed in multi-station mix with ad for University of Alabama. **(KK-VA)**
- WQXI GA **Atlanta** – 2/17 1813 – Over all comers simulcasting WSTR-FM with Coldplay's "Adventure of A Lifetime" and "Star 94" slogan. **(NjW-ON)**
- WKRD KY **Louisville** – 2/12 1802 – In multi-station mix (WNIS, WVCD, UNID talk, C&W and oldies, and R. Reloj) with "Cards [i.e. University of Louisville Cardinals] radio 7-90 AM" promo. **(KK-VA)**
- WTNY NY **Watertown** – 2/14 0810 – Over all comers with "Martini Mix" NOS music show, ad for FX Caprara Volkswagen in Watertown, "the news you need to know, WTNY" slogan. **(MKB-ON)**
- 800 WSVS VA **Crewe** – 2/17 1729 – Over CJBQ-Belleville with ID, local spots and Patsy Cline song. **(NjW-ON)**
- WVHU WV **Huntington** – 2/13 1759 – ID: "The Tri-states only local news, news radio 800 WVHU Huntington WZZW Milton" into Fox news alert. Disappeared one word into the newscast, no doubt due to sunset power drop. Booming in over CKLW-Windsor. **(NjW-ON)**
- 810 WCKA AL **Jacksonville** – 2/19 1812 – In multi-station mix with male "...Alabama...8-10 94.3 FM and 97.1 FM." Paid political ad at 1819 for March 1st primary. **(KK-VA)**
- WSJC MS **Magee** – 2/19 1900 – In multi-station mix, all of a sudden very strong signal with female "We're glad you've tuned AM 8-10 to WSJC Magee Missi..." as "Mississippi" was cut off. Maybe WSJC raised and then immediately lowered power? **(KK-VA)**
- WPIN VA **Dublin** – 2/10 0800 – Appears to have dropped the "I-81" C&W format for sports talk in the form of ESPN as I heard an "ESPN Blacksburg" ToH ID which also mentions 1430-WKEX. **(NjW-ON)**
- +++ - 2/19 1748 – In multi-station mix (WCKA, WSJC, UNID Spanish talk and preaching) now carrying ESPN, ex-C&W format. "You're listening to ESPN Blacksburg AM 14-30, 8-10 and FM 94.1 and live on the web at espnblacksburg.com." 1430 = WKEX, 94.1 = W231BC. **(KK-VA)**
- CJVA NB **Caraquet** – 2/13 1758 – Good; "Souvenirs Souvenirs... de CJVA AM 810," and classic hits. **(BC-NH)**
- 820 WWBA FL **Largo** – 2/19 1800 – In multi-station mix with male "WWBA Largo Tampa Bay" ToH ID. **(KK-VA)**
- WTNW TN **Jasper** – 2/19 1821 – In multi-station mix (WWFD, WBAP, WWBA, UNID Spanish and R. Reloj) with male "Music radio 8-20 WTNW" ID. Same ID also noted at 1825. **(KK-VA)**
- 830 WGUE TN **Memphis** – 2/9 0627 – Classic Rock, FM/website non-ID: "100.1 GuessFM.com," local ad with mention of area code 901. **(JK-WV)**
- +++ - 2/19 1848 – In WTRU and Spanish from Cuba mix with oldies, "Memphis greatest hits" slogan. **(KK-VA)**
- 850 KOA CO **Denver** – 2/12 2350 – Dave Ramsay show, ToH ID "News Radio KOA," also mentions of 94.1 FM, into news. Poor to very poor under WKNR. Haven't heard KOA in years. **(PS-ON)**
- 870 WTCG NC **Mount Holly** – 2/1 0717 – Fair with call letter ID by man with Southern accent during local weather. **(DY-VA)**
- 880 WRFD OH **Columbus-Worthington** – 2/13 1801\* – Good, over WCBS; sign-off, "Due to FCC regulations, WRFD Columbus-Worthington must now concludes its broadcast day, however our programming continues via streaming online or HD radio, we would like to encourage you to visit WRFD dot com or WTOH HD2 Upper Arlington now where live streaming radio continues 24/7." **(BC-NH)**
- 910 WJCW TN **Johnson City** – 2/15 1800 – ToH ID: "from the Jim's Motorcycle Sales Studio, this is WJCW Johnson City-Kingsport-Bristol, a Cumulus station." **(NjW-ON)**


- WDOR WI **Sturgeon Bay** – 2/15 1808 – Alone on frequency with contest promo, "call us now... at WDOR to win" into "Osgood File." (MKB-ON)
- 940 WGRP PA **Greenville** – 2/18 1528 – "Only The Lonely" by Roy Orbison, promo for Charlie Tuna show on "940 WGRP," "Oh, Oh It's Magic" by ELO. Good. (PS-ON)
- 950 WHVW NY **Hyde Park** – 2/21 0035 – Lots of oldies from the 50's and 60's, apparently Murray The Machine show according to their website, ID at 0109 "...WHVW" followed by WHVW jingle sung by female. Very poor, mostly under WBES. (PS-ON)
- WAKM TN **Franklin** – 2/17 1821 – Over usual WWJ with local weather, PSA mentioning Williamson County Clerk (registration for Tennessee primary, perhaps?) "Hometown Radio" slogan into C&W song. (MKB-ON)
- WXGI VA **Richmond** – 2/16 2229 – Commercial for Luck Chevrolet in Ashland. Promo for Richmond Spiders basketball and ESPN stuff. (NjW-ON)
- WBES WV **Charleston** – 2/8 2141 – "95 The Sports Fox" slogan, talk about Cam Newton in Super Bowl. (JK-WV)  
 +++ – 2/21 0035 – Lots of sports talk, many mentions of Fox Sports, many IDs as "95 The Sports Fox," show promos on "95 The Sports Fox." Fair to very poor mixing with what I later IDed as WHVW. No sign of usual WWJ, CFAM and WYWY. (PS-ON)
- 960 WERC AL **Birmingham** – 2/12 2320 – Began with hearing mentions of iHeart Radio and the iHeart Radio app, heard clear ID in a jumble of stations "...105.5 WERC and 960 WERC..." then resumed Ground Zero program. Very poor mixing with WFIR and probably WKVX. (PS-ON)
- WTCH WI **Shawano** – 2/15 0700 – CBS news after legal ID that also mentions FM 96.1. (NjW-ON)
- 990 WJEH OH **Gallipolis** – 2/9 1759 – ID: "990 WJEH Gallipolis-Point Pleasant-Middleport" and web address. Not much else was audible thanks to splatter from 1010-CFRB. (NjW-ON)
- 1020 WPEO IL **Peoria** – 2/19 1701 – On top with "The Word AM 10-20 and 97.7 FM WPEO Peoria" ID, SRN News, ad for the Illinois Mennonite Relief Sale; into Washington Watch program. (HF-MI)
- 1030 WONQ FL **Oviedo** – 2/16 1810 – WBZ stomping on hoped for mellow SS music then switched loop to figure of 8 pattern. Same SS song as heard on web stream and canned SS liner including "La Grande" and on to next tune. All verified by audio stream with 16 second delay. Stayed for night switch occurring at 1815:03. New. (SC-IN)
- 1050 WFAM GA **Augusta** – 2/1 0658 – Ending religious program, woman gives P.O. Box 312 address in Illinois, "We're WFAM," then man with promo for Wilkins Radio. Good and mostly atop, started ToH ID with "24 hours a day," then lost to WBQH power-up. (DY-VA)
- 1070 WFNI IN **Indianapolis** – 2/21 2100 – ToH ID "WFNI Indianapolis," sports talk, mostly about basketball. (JK-WV)
- WNCT NC **Greenville** – 1/30 0026 – "A North Carolina Original... Beach, Boogie and Blues" slogan. At 0052 ID for multiple BB&B stations including WNCT. (JK-WV)  
 +++ - 2/15 1955 – Rock oldies including "Proud Mary," at 2003 ID for WNCT Greenville, AM 1070 and two FM frequencies, on 101.1 and 105.9, "North Carolina's Beach Boogie and Blues Station" slogan, into more rock music. At 2007 ad for Walgreens followed by "more beach boogie and blues starts right now" station promo. Weak but steady signal, not heard here before, amazing as 10,000 watt signal from five tower antenna system is directional out over the Atlantic. (TF-NH)
- 1090 WTSB NC **Selma** – 2/18 0607 – Local weather (high of 61), "Southern Farm Network WTSB" ID. (JK-WV)
- 1120 KMOX MO **Saint Louis** – 2/14 2100 – Alone atop frequency with St. Louis Blues hockey, no sign of usual semi-local pests WKAJ, WPRZ, or WBNW. (TF-NH)
- WKCE TN **Maryville** – 2/16 1800 – End of Merle Haggard's "Branded Man" and ID: "From the Marble City to the great Smoky Mountains, this is Mid-Century Radio, WKCE Marysville-Seymour-Knoxville." Into The Beatles' "All My Loving" soon faded out to KMOX. (NjW-ON)
- 1130 WPYB NC **Benson** – 2/16 1700 – Poor with ID by man that sounded like "WPYB Benson.... Country." Also noted at 1730 with local spots in area code 919 and Michael Martin Murphey's "Wildfire." (NjW-ON)



- 1140 WRLV KY **Salyersville** – 2/11 0700 – Out of C&W tune with ID: “Real country is classic country, 106.5 WRLV Salyersville-Paintsville.” Local and Eastern Kentucky news read by a woman sponsored by Salyersville National Bank. WRVA-Richmond audible underneath. ID doesn’t even mention 1140. (NjW-ON)
- WCJW NY **Warsaw** – 2/18 1518 – Local ads for health care, McClurg Chrysler- Dodge, UPS store in Batavia, ESL Bank, Pelegrino Auto Sales, Willy Well Drilling, Tobacco Free PSA, event calendar, “CJ Country” slogan and WCJW.com mention at 1523, “CJ Country” jingle and into C&W music. Good. (PS-ON)
- KYOK TX **Conroe** – 2/20 0723 – Presumed and quickly fading up to fair with slogan "on 1140 AM The Legendary KY" into UC Gospel. (SC-IN)
- 1150 CKOC ON **Hamilton** – 2/21 2108 – "Raptors Game Night," Toronto Raptors v. Memphis Grizzlies NBA hoops, ID as "TSN 1150 Hamilton." (JK-WV)
- 1160 WSKW ME **Skowhegan** – 2/23 2238 – Ads, “Classic Country 1160” ID at 2239 and 2243, “Tennessee Whiskey” by George Jones, ID at 2246 “1160 WSKW,” more country music. Fair at times to very poor, mixing with WCCS, WBYN and WCXI. (PS-ON)
- 1170 WCLN NC **Clinton** – 2/1 \*0703 – Sign-on announcement: “You’re listening to the North Carolina Association of Broadcasters award-winning radio station, Oldies 11-70, hits from the 50s, 60s, 70s, and 80s. We’re Oldies 11-70, WCLN Clinton,” rooster call, and into music. Fair, mostly under WWVA. (DY-VA)
- 1190 WAFS GA **Atlanta** – 2/16 1759 – “Biz 1190” slogan with woman reading traffic report followed by spot for some workshop and ToH ID. No sign of WOWO at this time. (NjW-ON)
- WVUS WV **Grafton** – 2/16 1700 – Man gave station phone number followed by woman with ID and mention of “Light of Life Radio Ministry.” Mixing with WCRW-Leesburg. (NjW-ON)
- 1200 WSML NC **Graham** – 2/16 1658 – Commercial for Wheels ‘n Bumpers Car Wash in Burlington and ESPN stuff. (NjW-ON)
- 1230 WGUY ME **Veazie** – 2/21 1748 – Atop on frequency with rock oldies, ID for 93.7 and 94.1, commercial for Arcadia Reality Group with offices in Ellsworth and Bar Harbor, PSA to get a mammogram, into more oldies. (TF-NH)
- WTKG MI **Grand Rapids** – 2/15 0744 – Faded up with ID and a spate of local spots including one for the upcoming WCHA Final Five college hockey tournament. (NjW-ON)
- WHUC NY **Hudson** – 2/16 0718 – Out of graveyard jumble with C&W songs, "Hudson Valley Country 107.3 WRWD" FM // ID. (MKB-ON)
- WCLO WI **Janesville** – 2/14 0600 – ID: “when it happens, it’s here... WCLO Janesville-Beloit,” into CBS news. (NjW-ON)
- 1240 WSBC IL **Chicago** – 2/12 1800 – Arose from the jumble with ToH ID. (NjW-ON)
- WBAS MA **West Yarmouth** – 2/21 1715 – Atop frequency with Spanish music, animated male announcer. (TF-NH)
- WSKI VT **Montpelier** – 2/21 1738 – CBS Sports feed, commercial for O'Reilly Auto Parts, steady signal for ten minutes. (TF-NH)
- 1260 CKHJ NB **Fredericton** – 2/23 2328 – Country music, ID at 2333 “Country KHL” and mentioned 103.5 FM, more music. Poor, mostly under WSKO and maybe WPNW as well. (PS-ON)
- 1280 WHTK NY **Rochester** – 2/9 0800 – WHAM Weather, Traffic on highways 390, 490, and 590. "Rochester's Fox Sports" slogan. (JK-WV)
- WYAL NC **Scotland Neck** – 2/1 \*0701 – Sign-on announcement by woman, mention of 5000 watts, station address, into UC:GOS music. Good with WADO. (DY-VA)
- 1290 WHIO OH **Dayton** – 2/10 0656 – “Miami Valley weather and traffic, WHIO” IDs. (JK-WV)
- 1300 WCKI SC **Greer** – 2/1 0659 – Briefly good and atop with promo for catholicradioinsc.com, “You’re listening to Catholic Radio in South Carolina” ID. (DY-VA)
- 1310 WTLC IN **Indianapolis** – 2/15 0813 – Fighting usual pest CIWW with JC Penney ad, local weather, "AM 1310 The Light" slogan. (MKB-ON)
- +++ – 2/14 0757 – End of Mount Zion Apostolic Church program with Senior Pastor Bishop Lambert Gates Jr. followed by ToH ID and slogan “Indy’s station for inspiration and praise, AM 1310 The Light.” (NjW-ON)
- WDOC KY **Prestonburg** – 2/17 0658 – "You are listening to WDOC Prestonburg, Kentucky" ID out of mix. (JK-WV)



- CIWW ON **Ottawa** – 2/22 1619 – "Number one for news in Ottawa, this is 13-10 News" slogan, "Traffic and weather together on the 1's." Mixing with WCCW and UNID oldies. **(HF-MI)**
- 1320 WJNJ FL **Jacksonville** – 2/1 0735 – Presumed with the Yolanda Adams Morning Show (albeit not listed as an affiliate on the show's website), ads, ID, mention of "Jacksonville's Gospel station," fair with WVNZ, WJAS. **(DY-VA)**
- WKRK NC **Murphy** – 2/1 0741 – Presumed with local ad with 828-835-2455 phone number, which Googles to Murphy NC, more ads, to C&W music. **(DY-VA)**
- CJMR ON **Oakville** – 1/30 2100 – "You're listening to CJMR, The Voice of the City" ID into unidentified South Asian language. **(JK-WV)**
- 1330 WEBO NY **Owego** – 2/22 1633 – Classic rock/pop tunes, ads for Guthrie Cardiovascular Services and Tioga State Bank; "107.9" and other FM promos. Copyable peaks under WTRX. **(HF-MI)**
- WSPQ NY **Springville** – 2/19 1801 – Over/under WRCA; classic hits, "Calling for cash on 20 dollar Monday on 1330 WSPQ..." into "Knocking on Heaven's Door" by Charlie Rich. **(BC-NH)**
- WHBL WI **Sheboygan** – 2/15 0840 – Over usual Erie, PA pest WFNN with local news, [whbl.com](http://whbl.com) website promo, "here's your 1330 WHBL forecast" into local weather. **(MKB-ON)**
-  – 2/15 0830 – Local news read by man including item about a man found frozen to death in a park. **(NjW-ON)**
- 1340 WJRI NC **Lenoir** – 2/1 0750 – Call letters and 100.5 FM/1340 AM ID, clear in jumble. **(DY-VA)**
- WLSG NC **Wilmington** – 2/1 0742 – Local ad, promo for the Kings basketball network, "94.1 FM and 1340 AM WLSG ... and 97.1...WSME... on the Beach Radio Network." Good and atop the graveyard. **(DY-VA)**
- WQSC SC **Charleston** – 2/1 0800 – Promo for CBS news coming up on the hour, ID for WQSC and WJKB-950, "The Voice," CBS news sounder on the hour. Good in the mix. **(DY-VA)**
- 1360 WYOS NY **Binghamton** – 2/23 1800 – Over other sports talkers with promo for Mike and Mike show "on ESPN 1360 WYOS Binghamton" into ESPN Sports Center. **(MKB-ON)**
- 1380 WKJG IN **Fort Wayne** – 2/14 029 – Heard show promo on "1380 WKJG," then lost, Very poor with CKPC and maybe WKDM. **(PS-ON)**
- WABH NY **Bath** – 2/20 0459 – Good; "WEHH where all the good songs have gone," and light oldies. Also noted 2/26 0600 with "This is where all the good songs have gone, WABH Bath and WEHH Elmira Heights-Horseheads," cut into news. Per web site, WABH simulcasts WEHH weekdays 6:00 a.m to 6:00 p.m. and 24 hours weekends. **(BC-NH)**
- +++ - 2/21 1755 – Ex-sports format, now with nostalgia type oldies, at 1800 "This is WABH, Bath and WEHH, Elmira Heights – Horseheads" and into CBS News, later "24 hours a day, your kind of music, WABH." **(TF-NH)**
- WKDM NY **New York** – 2/16 2259 – Talk by male announcer in Mandarin (according to their website), ToH ID in English "1380 WKDM," back into Mandarin talk. Fair to poor mixing with WABH and CKPC. **(PS-ON)**
- +++ - 2/8 2025 – Foreign language, not Spanish, female speaker, good signal. WKDM brokers programs from a number of ethnic groups. **(TF-NH)**
- 1390 WLCM MI **Holt** – 2/13 0841 – Creaming usual WNIO "Sports animal" with gospel songs, "Lansing's best, Victory 1390 WLCM" slogan. **(MKB-ON)**
- WMER MS **Meridian** – 2/14 0650 – Black gospel, male canned "WMER, Meridian" at 0700. ABC News in the mix at this point, likely also Mississippi but WROA, Gulfport. **(TLK-FL)**
- WFBL NY **Syracuse** – 2/8 2015 – Michael Savage Show, mixed with WCAT, oldies, and WEGP, EWTN programming. Never heard WFBL here before. Years ago, station was "Fireball Radio," one of two Top 40 radio stations in Syracuse, the other being WOLF-1490. **(TF-NH)**
- 1400 WAMC NY **Albany** – 2/20 0759 – Over WWWS-Buffalo groundwave with usual NPR announcement "listener supported radio...support for WAMC comes from..." into list of local sponsors. **(MKB-ON)**
- 1410 WRTZ VA **Roanoke** – 2/13 1728 – "True Oldies" slogan followed by The Hollies' "Long Cool Woman In a Black Dress." **(NjW-ON)**

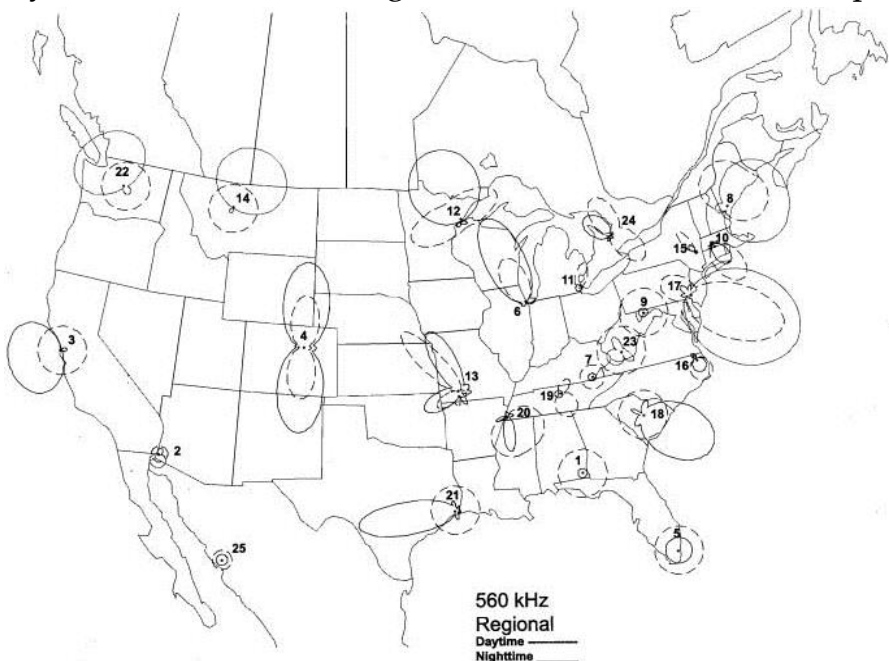
- CJWI QC **Montreal** – 2/26 0601 – Good; ID in French, "CJWI... de Montréal, Canada, à modulation amplitude à la 1410... CPAM 1410 point com..." **(BC-NH)**
- 1420 WCED PA **Du Bois** – 2/19 1800 – Over/under WNRS; "96-7 and 107-9, we are Connect FM, your only local news radio." **(BC-NH)**
- 1440 WGIG GA **Brunswick** – 2/1 0730 – ID as "14-40 WGIG," to community announcements by woman, clear in mix. Another ID after a long ad string and into "Straight Talk" program. **(DY-VA)**
- 1450 WHTC MI **Holland** – 2/11 0659 – Commercial for The Windmill Restaurant and ID. **(NjW-ON)**
- WQNT SC **Charleston** – 2/1 0800 – "This is 14-50 WQNT...Carolina... Charleston...radio network," to Fox sports, fair but clear in mix. **(DY-VA)**
- 1460 WXOK LA **Port Allen** – 2/20 0639 – End of Urban Gospel vocal, black female local ad with phone number, "Yes You Can" by Marvin Sapp, male, "Heaven AM 1460, WXOK" at 0647, into "Shifting the Atmosphere" by Jason Nelson segued to "I Need To Know" by Smokie Norful. // audio stream at [heaven1460.com](http://heaven1460.com), and song titles on the right center frame. Presume still on night power, 4700/290, though that night pattern has me wondering. Some co-channel from "La X" WQXM, Bartow, FL. This is one of those "W" calls assigned west of the Mississippi, and in this case the tower is a mere mile west. **(TLK-FL)**
- 
- 1470 WVOL TN **Berry Hill** – 2/13 2320 – Funk/Urban music, local ads, finally heard an ID at 2356 "WVOL" by female announcer, "Why Can't We Be Friends" by War. Very poor mixing with WMBD and others. **(PS-ON)**
- 1480 WERM AL **Mobile** – 2/13 0650 – Urban Gospel music, "Gospel 14-80" slogan by man. Co-channel same format WYZE. **(TLK-FL)**
- WYZE GA **Atlanta** – 2/13 0659 – Urban Gospel, black male announcer, "... 30 degrees here in Atlanta... on WYZE..." Co-channel WERM, Mobile with same format. **(TLK-FL)**
- 1490 WBTA NY **Batavia** – 2/18 1331 – Good with "People Got to be Free" by The Rascals, ID "1490 WBTA, now on 100.1 FM..." "Beat It" by Michael Jackson. **(PS-ON)**
- 1500 WLQV MI **Detroit** – 2/17 2359 – Religious talk, "Faith Talk Radio" slogan and WLQV IDs at ToH, ads including one for business loans, into "Hope in the Night" hosted by June Hope. Fair to poor mostly above WFED (partially nulled). **(PS-ON)**
- 1530 WLCO MI **Lapeer** – 2/19 1800 – Good; "1530 AM WLCO Lapeer" with Real Country jingle cutting into news. **(BC-NH)**
- WMCE PA **North East** – 2/18 1325 – "Mustang Sally" by Wilson Pickett, ID at 1326 "WMCE" by female announcer, "Baby I Love You" by Andy Kim, another WMCE ID at 1329. Good with slop from WWKB on 1520. **(PS-ON)**
- 1550 WDLR OH **Delaware** – 2/14 0558 – Under CBEF-Windsor with Jackson 5 oldie and ID. **(NjW-ON)**
- +++ - 2/22 0701 – Over usual CBEF with "live, local... we are 1550 WDLR Delaware and [1550wdlr.com](http://1550wdlr.com)" ToH ID into local news. **(MKB-ON)**
- +++ - 2/15 0547 – Central Ohio weather, oldies music "Fooled Around and Fell in Love" and "I'm So Excited," ID as "1550 WDLR." **(JK-WV)**
- WIGN TN **Bristol** – 2/13 0600 – Legal ID in between bluegrass gospel ditties. I am guessing that they were already on day power at this time as they were creaming CBEF-Windsor. **(NjW-ON)**
- WKBA VA **Vinton** – 2/13 1728 – Religious program from Hagerstown, MD. ID as "the Ministry Stations" that also mentions 1390 and FM 106.7. Duking it out with co-religionist WIGN (Bristol, TN) playing Bluegrass Gospel. No sign of CBEF-Windsor at this time. **(NjW-ON)**
- WMRE WV **Charles Town** – 2/24 1905 – Presumed wiping out CBEF with Fox Sports talk about upcoming NFL Combine, "Sports talk 1550" slogan. **(MKB-ON)**
- 1570 WBGX IL **Harvey** – 2/13 2258 – Announcer talk with mention of "Big Gospel Express," ToH ID "1570 WBGX." Poor, mixing with a number of stations. **(PS-ON)**
- WVTL NY **Amsterdam** – 2/22 1816 – Out of mush with "...on 104.7 WVTL" into C&W version of "I never promised you a Rose Garden" then faded back into mush. **(MKB-ON)**
- 1580 WZKY NC **Albemarle** – 2/25 0014 – Oldies, "From the Beatles to...Great Oldies 1580 WZKY" ID at 0016, "More Today Than Yesterday" by Spiral Staircase, "I'll Be There" by The Jackson 5, WZKY jingle at 0023. Poor to very poor mostly under CKDO. **(PS-ON)**



- 1590 WIJK MD Ocean City – 2/15 2310 – Sounded like alternative rock music, at 2312 heard “...105.1, The Ride,” more music and another ID at 2319 “...105.1, The Ride” by female announcer. Very poor mostly under WAKR. (PS-ON)
- 1630 WRDW GA Augusta – 2/19 2126 – Very clear ID as “News Talk Sports WRDW” amidst weakly heard talk program. (JK-WV)
- 1650 WHKT VA Portsmouth – 2/15 0608 – John Fredericks Show, slogan “Common Sense for the Commonwealth,” local weather, mentioning icy roads reported in Portsmouth and Southeast Virginia. (JK-WV)
- 1660 WQLR MI Kalamazoo – 2/17 2047 – Local sports report: Western Michigan Broncos lose in overtime, ID as “WQLR in Kalamazoo.” (JK-WV)
- WBCN NC Charlotte – 2/17 2100 – Mark Levin Show, with WBCN ID by Levin, North Carolina voter ID PSA, mixing with WQLR. (JK-WV)

## NRC Antenna Pattern Book, 7th Edition

The 7th Edition of the NRC *Antenna Pattern Book* is now available. This all new edition prepared by NRC'er Paul Swearingen is an all-inclusive book of patterns for both Day and Night operation of



stations in the USA, Canada and selected foreign stations. The data for the book comes from the 34<sup>th</sup> Edition of the *AM Radio Log* and NRC'er John Callerman's comprehensive Mexican station listing.

The book comes shrink wrapped in 8½ by 11 three hole punch format for placement in your own three ring binder. There are 240 pages and the book has maps covering 530 through 1700 kHz depicting the lower USA, Canada and Mexico. Hawaii and Alaska are shown on separate maps at the of the book.

Price/ordering info: To the United States, \$22.95 for members, \$28.95 for non-members (add \$4.00 for Priority Mail delivery to U.S. addresses only). To

Canada \$36.25; airmail outside of U.S. and Canada \$41.75. For those outside the U.S., use PayPal or a postal money order in U.S. funds only. Order from NRC, P.O. Box 473251, Aurora CO 80047-3251 or [www.nrcdxas.org](http://www.nrcdxas.org). Colorado residents, please add 3.5% sales tax.

### Membership Renewals

Your subscription expiration date is on the back cover. Renewals go to NRC Headquarters, P.O. Box 473251, Aurora, CO 80047-3251. Rates are also on the back page. You can also order online using PayPal – go to <[www.nrcdxas.org](http://www.nrcdxas.org)>.

Order e-DXN in addition to (or instead of) your subscription to the paper edition, and get DX News in PDF form (and in full living color!) a full week before the masthead publication date.

You can use the opportunity to order publications too – just a single check is necessary.



DX News is printed by

Peak Printing, Inc.  
716 S. 9th Street, Cañon City CO 81212  
(719) 275-2136 [info@peakprintingonline.com](mailto:info@peakprintingonline.com)

All your printing needs – including SWL and Amateur QSL Cards



# Domestic DX Digest – West

Jim Tedford, Editor

20310 Bothell-Everett Hwy. B4, Bothell WA 98012-8133, [Radio\\_Enthusiast@hotmail.com](mailto:Radio_Enthusiast@hotmail.com)

Loggings of U.S. and Canadian stations by DXers located in the Central, Mountain, and Pacific Time Zones. All times are Eastern Local Time (ELT).

## REPORTERS

- GH-OK** **Glenn Hauser, Enid, OK.** Mostly DX-398 with internal antenna only; NRD-545 with ALA-330S E-W inside or N-S random wire; IC-R75 with E-W longwire; also available, PL-880 with internal or random wire; FRG-7 with NW/SE short wire; Nissan stock car radio when specified. Glenn's complete reports, with extensive commentary, are originally published in DX Listening Digest.  
<http://www.worldofradio.com/dxldmid.html>
- JJR-WI** **John J. Rieger, South Milwaukee, WI.** Icom IC-R75 MFJ-959B tuner, preamp Kiwa loop.
- JR-OK** **John Reed, Shawnee, OK.** NRD-525 with Pühler Electronics 70.455 roofing filter, Eska post IF filter board, quiet display power supply and numerous other mods; homebrew tuned ferrite loops, Clifton Labs active whip, phaser.
- JDS-MN** **Jeff Steffes, Watertown MN.** Kenwood R-2000, Quantum Phaser, Quantum QX Loop v2.0, 80' Longwire N-S.
- JW-CO** **John Wilkins, Wheat Ridge, CO.** Drake R-8, 4-foot box loop.
- NK-IL** **Neil A. Kazaross, Barrington IL.** Perseus and DKAZ 21 ft. x 120 ft. due west.
- RD-NE** **Rick Dau, South Omaha, Nebraska.** Kenwood R-5000, Sony ICF-2010, Quantum QX Pro loop, Grundig AN200
- RS-UT** **Ron Schiller, St. George, UT.** Palstar R30, loop antenna, CC Radio and Kia Soul Car radio.
- SMA MB** **Shawn M. Axelrod VE4DX1SMA, VEPC4SWL Winnipeg, MB.** Icom ICR70 and Drake R8 3 Foot un-amplified box loop / Quantum QX LOOP v2.0 / 155 Foot U shaped outdoor wire / 100 Foot indoor wire run around the basement walls / MFJ 1026 Phasing unit

## DX LOGS

- 590 **KSUB** **UT** **Cedar City** – 2/1 2000 – Program with ID and location, well under pest KXSP. Heard once here over a decade ago! **(NK-IL)**
- 620 **WJDX** **MS** **Jackson** – 2/19 1852 – Fair in mess with "...a proud sponsor of Southern Miss athletics" and "here in Hattiesburg" heard during broadcast of Univ. of Southern Mississippi baseball. MS #13 at this QTH. **(RD-NE)**
- 680 **KKYX** **TX** **San Antonio** – 2/18 0817 – Ad for a hatter featuring lots of styles and sizes of Stetsons, et al., "at 119 Broadway, downtown," another ad for something Texas-size. Gotta be KKYX, and yes, at 0819 a woman resumes KKYX News. At 0800 I was getting XEORO in Sinaloa on 680, but KKYX goes to 50 kW ND day pattern at 0815 in Feb, after night pattern of 10 kW SE into the Gulf. **(GH-OK)**
- 710 **KFIA** **CA** **Carmichael** – 2/1 2027 – Fair-good, mostly atop KCNC QRM ending religious program into some local ads and an ID. They have a favorable day pattern to get out to the east via SSS. **(NK-IL)**
- 710 **WAQI** **FL** **Miami** – 2/13 0630 – Poor though steady. M-F and "R. Mambi" said 2 times. Alone. **(JJR-WI)**
- 800 **WSVS** **VA** **Crewe** – 2/13 0714 – Poor with calls said between C&W songs. Lost to others later. **(JJR-WI)**
- 840 **WHAS** **KY** **Louisville** – 2/6 2034 – I had forgotten there was yet another Republican debate Saturday night, originating on ABC-TV, but run across WHAS 840 Louisville KY carrying the soundtrack, then scan the entire MW band for some others //, not necessarily synchronized: WSB-750, KRMG-740, WLW-700, KFAB-1110, KSL-1160. All the other big clear channel signals I normally get were doing something else. **(GH-OK)**
- 850 **WKNR** **OH** **Cleveland** – 2/6 0644 – NEW, Poor, commercials ending with "Proud partner of the Cleveland Cavaliers. @TOH "ESPN Radio." **(JDS-MN)**
- 850 **KJON** **TX** **Carrollton** – 2/18 1911 – Briefly wiping out KOA with REL talk in Spanish between two males on the Guadalupe Radio Network. Confirmed via

webstream. Signal vanished at 1915, which lines up with KJON's FCC Sunset time in the month of February. TX #76 here. **(RD-NE)**

- 880 KJJR MT **Whitefish** – 2/1 2000 – Under CKLQ with "KJJR, Whitefish, Kalispel..." heard. No trace of WCBS clobbered by termination. New !! MT #16 **(NK-IL)**
- 880 KHAC NM **Tse Bonito** – 2/17 0034 – Religious talk show in English with caller from New York, but this is no WCBS! Obviously KHAC, lacking a lower sideband, and dominant now from the west, no problem from KRVN-NE to the north. Its 10 kW ND day power makes it the best bet for NM to the east as long as KKOBB and KTNN honor their requirement to null toward New York; unlike KCKN but QRM from KOKP and KDKA. **(GH-OK)**
- 890 KTLR OK **Oklahoma City** – 2/11 1030 – I'm checking whether KTLR OKC is still partly in Spanish, as on their program schedule grid: Yes, praise music in Spanish, 1038 predicating (preaching) in Spanish. **(GH-OK)**
- 900 CHML ON **Hamilton** – 2/18 0137 – Local ad for Hamilton, then "AM 900, CHML" ID at 0138 and back to 'Coast to Coast AM' (and it seems, beyond border-to-border). CHML is dominating 900 rather than any XE, and 860 also bears French from CJBC. **(GH-OK)**
- 940 WMAC GA **Macon** – 2/13 0653 – Poor, "NewsTalk WMAC" into weekly top talk show topics. Alone. **(JJR-WI)**
- 950 KJR WA **Seattle** – 2/1 2027 – Poor-fair, through pest KRWZ with no trace of WNTD crushed in back null. Ad for Bellevue Rare Coins. New!! WA #20. **(NK-IL)**
- 970 WDUL WI **Superior** – 2/15 0815 – Faded in and out under mega pest WDAY with sports programming and Sport Radio IDs. This has been on my target list for a long time. NEW! **(SMA-MB)**
- 990 WJEH OH **Gallipols** – 2/18 2224 – Poor signals fading in out while CBW was off. Light music and then full ID. Huge surprise and a brand new station. I had to listen to the ID several times because I could not believe what I was hearing. **(SMA-MB)**
- 990 WNML TN **Knoxville** – 2/13 0735 – Poor; Myrtle Beach vacations, Sports Animal WNML. No CBW. **(JJR-WI)** 2/19 0014 – Poor signals with CBW off. Could hear the sports talk and found it to be // to their web listen live broadcast. My second new one of the night. **(SMA-MB)**
- 990 CBW MB **Winnipeg** – 2/18 – Off air from 2130 to 0019. They were still broadcasting on 89.3 FM. Left the frequency open for the first time at night in many years. **(SMA-MB)**
- 1060 KNLV NE **Ord** – 2/1 2001 – Fair-good peaks, alone! (no trace of KYW or SS QRM). Nice oldies then ID. **(NK-IL)**
- 1110 KBND OR **Bend** – 2/1 2101 – Very poor thru KFAB and is USB to get through KMOX IBOC. Caught enough audio to be sure it was Trailblazers BKB coverage. These guys have often run day power at night for BKB for the past couple years and aren't uncommon here in good conditions when they do. **(NK-IL)**
- 1130 CKWX BC **Vancouver** – 2/1 2000 – Good; peaks in well with ID and area news. Rather early for them and hopefully a precursor of better things to come, but other than usual 1040 behind WHO, there wasn't much more happening and conditions above in the upper band were poor. **(NK-IL)**
- 1150 KWKY IA **Des Moines** – 2/13 0627 – *Praying the Holy Rosary*. Followed by commercial for Iowa's Catholic men's conference. Only REL station listed on this frequency in Iowa in the AM Radio Log 36th edition. **(JDS-MN)**
- 1150 KSEN MT **Shelby** – 2/1 1922 – Fair-good peaks in rather earlier with area weather announcement, Front Range and abnormally warm temps into a couple ID's. **(NK-IL)**
- 1150 WHBY WI **Kimberly** – 2/13 0622 – Out of Lumber Liquidators commercial. "News talk Eleven-Fifty WHBY." Followed by spot for Wisconsin and The Badgers sports network. **(JDS-MN)**
- 1170 KBOB IA **Davenport** – 2/13 0702 – NEW. Out of song: "Why Have You Left the One You Left Me For?" by Crystal Gayle. Into commercials for New Biotics, 2016 Chevrolet Malibu, Outdoor Show, Rock Island and stopbullying.gov. Followed by "Real Country Eleven-Seventy K-BOB." Back to country music. **(JDS-MN)**
- 1190 KVSF KS **Beloit** – 2/14 0758 – National anthem, followed by "Good morning. This is Radio Station KVSF beginning another day of broadcasting ...." Fair signal in null of KVCU. **(JW-CO)**

- 1230 KFSP MN **Mankato** – 2/13 0722 – Station ID: "AM Twelve-Thirty KFSP." Followed by Mill's Fleet Farm commercial. **(JDS-MN)**
- 1260 WSDZ IL **Belleville** – 2/19 1806 – Briefly topping KSGF with start of financial talk show *Capitalist Times*. Initially couldn't locate anyone close by on 1260 whose program schedules listed them as carrying this show, but longtime DXer Tom Laskowski in South Bend, Indiana came to the rescue by ID'ing this as WSDZ. First time heard since its return to the air in December following the format switch from Radio Disney. **(RD-NE)**
- 1260 AM**  
**THE ANSWER**  
INTELLIGENT. CONSERVATIVE.
- 1270 KBZZ NV **Sparks** – 2/5 1900 on – Completely dominating frequency, CBS Sports Net, Ad for William Hill Sports Book (Super Bowl betting). **(RS-UT)**
- 1310 CIWW ON **Ottawa** – 2/13 0623 – Poor; steady. Ottawajobs.ca, ?? Jeep, CityTV, no WIBA at all. **(JJR-WI)**
- 1330 KPTY IA **Waterloo** – 2/18 1800 – Continuous top 40 music with call ID and "The Party." New here. **(JR-OK)**
- 1350 KRNT IA **Des Moines** – 2/14 0730 – "Des Moines' Sports Leader 1350 ESPN" was the ID given at this time, followed by ESPN programming. Fair. **(JW-CO)**
- 1350 KABQ NM **Albuquerque** – 2/14 0731 – Man says "This is Albuquerque's Progressive Talk AM 1350," followed by ads. Fair signal even with loop in the wrong direction (E-W). **(JW-CO)**
- 1360 KBUY NM **Ruidoso** – 2/14 0815 – Song "The Things We Do for Love," followed by several ads; ID at 0822: "KBUY Ruidoso's Classic Hit Station 1360 AM, 105.9 FM" and back to music. Fair signal with loop pointed E-W to null KHNC. Already on day power maybe? Ruidoso, by the way, is Spanish for "noisy." **(JW-CO)**
- 1360 KRKK WY **Rock Springs** – 2/20 0759 – Man with legal ID at 0759:52: "Your 24-hour sports station is AM 1360 KRKK Rock Springs - Green River, ESPN for southwest Wyoming;" ESPN Radio *Sports Center* followed at ToH. Good signal in KHNC null. **(JW-CO)**
- 1380 KRCM TX **Shenandoah** – 2/19 0851 – SS religious vocals; occasional announcement for La Iglesia del Pueblo church in Pasadena; LID at ToH mentioning KMIC-1590 only (which means it's not a legal ID): "Esta escuchando Radio Aleluya KMIC Houston 1590 AM. Esta es Radio Aleluya" and back to music. Fair peaks over/under KOTA. Most of their 22 kW must be pointed this way, since the signal was still fair well after our sunrise and way past Houston sunrise. **(JW-CO)**
- 1410 KNTX TX **Bowie** – 2/14 1820 – Oldies top 40 countdown with call ID. Weak in phase null of KGSO, Wichita. New here. **(JR-OK)**
- 1420 KTAN AZ **Sierra Vista** – 2/4 1930 – Repeated "K-TAN" IDs, mentions of Tucson, well atop channel with their 1500 watts. **(RS-UT)**
- 1420 KBHS AR **Hot Springs** – 2/22 1820 – Good signal on sudden fade-up with C&W religious music and Arkansas ads. IDs as "The Voice of Southern Gospel Music." The reception lasted only about 10 minutes, then rapidly faded. New here. **(JR-OK)**
- 1420 KTJS OK **Hobart** – 2/22 0938 – ID as "The Number One information station in southwest Oklahoma, KTJS Hobart" and into C&W music. Briefly punching thru QRM. **(JW-CO)**
- 1420 KGNB TX **New Braunfels** – 2/22 1810 – Weak with C&W, call ID, under several other signals. **(JR-OK)**
- 1430 KZQZ MO **St. Louis** – 2/15 0852 – "Golden Oldies 14-30, KZQZ" several IDs, apparent slogan change from "Cool Oldies" as in NRC AM Log 2015-2016, by DJ aka "Ambassador of Rock 'n' Roll," 0855 into news. On 50 kW day power, St Louis MO station remains dominant on skywave here, still very good as late as 0916, almost an hour after our sunrise, instead of Tulsa. **(GH-OK)**
- 1470 KWRD TX **Henderson** – 2/16 1620 – Previously unreported station is now reported. Henderson ads and NBC sports Good signal on fade-ups, but strong splatter from local KGFF. I last heard this station and logged it in 1996, 20 years ago. **(JR-OK)**
- 1490 KVWC TX **Vernon** – 2/16 1350 – News, call ID and C&W music, weak in phase null of strong KMFS, Guthrie, OK. **(JR-OK)**
- 1500 WBRI IN **Indianapolis** – 2/17 0842 – Turning on DX-398 still tuned for the warbler at night [see unID below], now I hear nothing but Christian religion in English, wrapping up show with website reference, discovertheword.org, connected with Our Daily Bread, loops NE/SW, and 0845 ID as "AM 1500, WBRI,



Indianapolis," and into another program. WBRI is a 5 kW daytimer with pattern southwest, favorable for us. **(GH-OK)**

**1510 KFNN AZ Phoenix** – 2/7 0903 – Financial news, loops slightly CCW from E/W, so I figure it's KFNN; 0904 PSA about asthma, 0905 about diabetes, no ID, and 0906 welcome back to 'Real Estate Today.' KFNN online program schedule is lengthy, and does have R.E.T. on it but Saturdays at 11 am MST; and there is a big gap between 3 and 8 am on Sundays! KFNN is actually licensed to Mesa with 22000/100 watts U3, and official February sunrise is not until 0915; nothing about a PSRA in the NRC AM Log, so they jumped the gun. Also, day pattern major lobe is to the NE, good for us, with lesser lobes to the WNW and SE. **(GH-OK)**

**1520 KYND TX Cypress** – 2/15 0859 – "1520 KYND with Joe Walsh" (?), country music continues. Hearing this over KOKC without even trying to null it, and both are close to same azimuth from here. **(GH-OK)**

**1540.04 KGBC TX Galveston** – 2/15 0859 – Checking for KGBC, the other ex-CRI relay, after just hearing 1520 KYND. Yes, here it is making usual lo het from hi side, vs KXEL; soliciting advertising calls to 713-868-5559, a "Siga Broadcasting" station, "AM 1540, KGBC, Galveston." At 0903 recheck already into a talk show, anti-Hillary. Interviewee seems named Sean (but not Hannity, I assume); now it's also hetting KEDA 1540 San Antonio TexMex music, but mostly separable. 0911 into a "short break" in program name ending in "Times," financial ads; 0915 finally resuming show, but too much CCI now; 0919 has faded out? Not quite, 0921 now interviewing Elliot re financial matters. KGBC is 2.5/0.25 kW U4, and I also hear its het at night. Day pattern favors the north, and has no trouble leapfrogging the 32 kW Metroplex 1540, KZMP, with its tight E-W pattern. **(GH-OK)**

**1550 WIGN TN Bristol** – 2/13 0615 – Fair with preacher with church address. LID, no CBEF. **(JJR-WI)**

**1570 WBGZ IL Alton** – 2/26 0736 – Poor signals mixing with WFRL carrying the Dave Ramsey Show and partial WBG? ID heard. I checked the Ramsey website and WBGZ does carry the program. NEW! You never know what will pop up while looking for other stations but I will take all the new ones that pop up. **(SMA-MB)**

**1570 WNDA IN New Albany** – 2/24 0740 – Fading in and out with Spanish talk and Mexican music. Have been hearing for about a week near sunrise but finally strong enough to compare what I was hearing with their live web stream to confirm it is them. NEW! Between old fashioned stubbornness and newfangled web streams I logged a new one. Ha Ha. **(SMA-MB)**

**1580 KHGG AR Van Buren** – 2/15 1820 – Call ID and ads for Fort Smith, over/under several other signals. **(JR-OK)**

**1580 KNIM MO Maryville** – 2/20 1743 – Call ID with C&W music, heard briefly on a fade-up. **(JR-OK)**

#### UNID

**880 UNID 2/11 1350** – On car radio, KRVN-NE, usual groundwave daytimer, has CCI from another talker in English. Closest 4 possibilities: IL and TX are listed as Spanish; 10 kW KHAC NM/AZ is partly English but far for groundwave. 50 kW KLRG AR is considerably closer, but AR has poor conductivity for GW. No daytime skywave noted now on prime channels 720, 840. Hoping to pull more out of this on the NRD-545 at home with loop nulling KRVN, but can't. **(GH-OK)**

**990 UNID 2/19 2210** – With country and western music. Never heard an ID during the CBW time off air. **(SMA-MB)**

**1500 UNID 2/5 2006** – Check, warbling hets roughly east-west, as not much signal from KSTP at the moment. If not out of WPSO New Port Richey FL, allegedly a daytimer: Probably not, but just in case, note that the other FL on 1500, WKIZ in Cayo Hueso is Spanish religion per NRC AM Log, and is 24 hours with 250 watts. Should they lapse into anything anti-Castro, or even relay some Radio Marti, that could get them a bit o' jamming from down south. **(GH-OK)**

**1500 UNID 2/6 2019** – Not much signal from KSTP, so I am hearing the blues music station and the warble-tone. KSTP is so weak that I can get pretty good bearings on these two, nulling them without KSTP in the way: warble is about 95 degrees, and blues about 135 degrees (assuming they are both eastward rather than westward). Tends to confirm blues source as the station doing that all-night,

KCLF New Roads LA. At least on weeknights, with weekends unaccounted for: <http://kclf1500am.com/shows.html> Closest to the 95 degree angle from Enid with the warble are three Alabamans and one further Georgian: WQCR Alabaster, 2300/3 watts, WVSM Rainsville, 1000/-, WKAX Russellville, 1000/-; and WDPC Dallas GA, 5000/CH 3200. **(GH-OK)**

**1500 UNID** 2/14 2338 – The warbling het against KSTP is still here, roughly from east. Les Rayburn from Alabama has offered to visit towns in Tennessee it might be coming from, but we ought to be able to pinpoint this without such drastic measures. 2/15 0023 – Hearing both the warblehet, and the blues station, latter presumably KCLF New Roads LA. 2/15 0850 – The warble is still audible, one semi-hour after sunrise here, indicating it is not too far east into the dayside, and still at 0916. (1430 St Louis, q.v. still has a big signal on skywave also as late as 0916 with 50 kW). I try to DF the warble again, and seems closer to E/W, 90 degrees than previous estimate of 95 degrees. Prime suspect is now WPOT Trenton TN (Jackson area), 250/6 watts, but two closest 1500s to it are KDFN Doniphan MO, 1000 watt daytimer, and WMJL Marion KY, 175 watt daytimer: WMJL is the one closest to the 170 degree bearing by Tom Jasinski from Joliet IL. (BTW, my nearest 1500, KPGM Pawhuska OK, 500 watt daytimer is also east of here, but not heard yet this morning, and no sign of the warble on it in full daytime). 2/17 2351 –) The warble is still weakly audible here with KSTP nulled. It seems there has been no progress the past week in pinpointing the source, but here's a pertinent post from Feb 11 on the IRCA list: "The 1500 noise is stronger here, in Acworth GA tonight. I went out and repeated the <roughly> 320 (magnetic N reference). On the SDR, the noises are on either side of 1500, leading me to believe that this is not a spur from 1490 or 1510. This is someone on 1500. In my 37 years as a broadcast engineer, I have encountered a few older transmitters that would "radiate" even when the high voltage was off. Normally this only goes a few miles, if it radiates at all. This typically goes away when the high voltage is "on." (So, the issue may not be apparent during the normal operation of the station.) I do not think this has anything to do with WFED. I suspect that it is someone with an older transmitter on 1500; they may be signing off, but the transmitter may continue to radiate some sort of trash. Given a relatively 'vacant' channel (relatively speaking --- if there is such a thing anymore) a few dozen watts can travel a surprising distance at night. I have heard WPOT here "after hours," so could be them, or someone in W. Kentucky, maybe S. Illinois. Although WPOT seems a bit too far west from what I am seeing here. Robert LaFore, Acworth GA" WPOT is the 250/6 watt station in Trenton TN (near Jackson), also my suspect for other reasons. **(GH-OK)**

Shawn Axelrod comments on a rare opening on 990 KHz: Wow what a night. Got a text from a friend wanting to know why CBW was off air. Ran to the radio room and yes they were off 990 but still on the FM relay on 89.3. I texted him back saying I did not know why but would be glued to the radio until they came back on. As you can see above I managed to get two new stations so it was all good considering conditions were very poor that night.

Thanks to everyone. See you next time. **(JDT-WA)**

## Unreported Domestic Stations

One previously unreported station, KWRD-1470, was reported to DDXD this issue for the first time since at least Volume 67 (1999-2000). We also drop WEZZ-930 from the unreported list and replace it with WEZZ-920, as that frequency change is now on the air. This leaves 448 active stations in the United States and Canada on the unreported list. Can you hear one and report it for next issue? The most recent full list was printed in Issue 82-20.

### Follow @NRCDXNews on Twitter!



Twitter can be used to disseminate hot MW DX tips to the DX community

To read tips: go to [www.twitter.com](http://www.twitter.com) and search for **#mwdx**

To send tips, write a tweet (140 characters max) and include the tag **#mwdx**

# International DX Digest

Bruce Conti, Editor

46 Ridgefield Drive, Nashua NH 03062-1174, [contiba@gmail.com](mailto:contiba@gmail.com)

Loggings of stations outside the U.S. and Canada. All times are Universal Coordinated Time (UTC).

## TRANS-ATLANTIC DX

- 1215 **UNITED KINGDOM** *Absolute Radio* sychros FEB 10 0300 – Song by the Smiths, man with *Absolute Radio* ID; fair. [Connelly-MA]  
 1530 **SAO TOME E PRINCIPE** *VOA Pinheira* FEB 10 0259 – ID "This is the Voice of America, Washington, DC signing on," then Yankee Doodle intro music; dominant. [Connelly-MA]

## PAN-AMERICAN DX

- 540 **MEXICO** XEWA San Luís Potosí, SLP FEB 18 0625 – Rock song in English, "Cuarenta Principales" interjected into song during a brief pause in lyrics, and again a minute later plus some other DJ comment. I would find this extremely annoying if I were enjoying the music, which I almost am; 0628 to a duet in Spanish. Dominant now instead of XETX Chihuahua, and forget about CBK. Still I doubt they are running 150 kW as listed. [Hauser-OK]  
 630 **PUERTO RICO** WUNO San Juan FEB 10 0300 – NotiUno ID; dominant. [Connelly-MA]  
 FEB 20 0100 – Parallel 760 WORA with talk by woman announcer in Spanish; weak under WMAL. [Saylor-PA]  
 650 **COLOMBIA** HJKH, *RCN Antena 2*, Bogotá FEB 20 0100 – Pips about a half minute late, Antena Dos ID; over *R.Progreso* Cuba. [Connelly-MA] FEB 20 0100 – RCN 4-note ascending chimes, 5+1 time pips and Spanish talk by a woman under WSM. [Saylor-PA]  
 680 **MEXICO** XEORO Guasave, Sin. FEB 18 1300 – Starting local newscast about Sinaloa with activities of PAN party, i.e. XEORO, 1/0.5 kW. No problem from KNBR or KKYX yet. [Hauser-OK]  
 690 **COLOMBIA** HJCZ, *W Radio*, Bogotá FEB 20 0100 – *W Radio* ID parallel 700; over *R.Progreso* Cuba. [Connelly-MA]  
 700 **COLOMBIA** HJCX, *W Radio*, Cali FEB 20 0100 – *W Radio* ID parallel 690; good. [Connelly-MA]  
 720 **BRAZIL** ZYK276 Porto Alegre FEB 20 0101 – Man in Portuguese, Porto Alegre mention at 0101:35; briefly atop jumble. [Connelly-MA]  
 730 **COLOMBIA** HJCU *Cadena Melodia*, Bogotá FEB 20 0100 – Melodia Estereo ID; dominant. [Connelly-MA]  
 730 **MEXICO** XEX, *TDW Radio*, México, DF FEB 21 1150 – Two guys with Argentine sports item, into anthem from 1157, male canned, "W... en Distrito Federal... XEX..." [Krueger-FL]  
 740 **MEXICO** unID FEB 21 1200 – Very weak with anthem beginning at tune-in, way under KTRH. [Krueger-FL]  
 760 **COLOMBIA** HJAJ, *RCN*, Barranquilla FEB 20 0100 – End of talk between two men, RCN ID's, 5+1 time pips at 0100 UTC. [Saylor-PA]  
 760 **PUERTO RICO** WORA Mayagüez FEB 20 0100 – Faded in as Colombia faded out; studio banter between man and woman announcers in Spanish, affiliate ID's as: "noticias... en Puerto Rico... seis treinta AM en San Juan, WPRP nueve diez AM Ponce, siete sesenta AM en Mayagüez, doce senta (?) AM Aracibo (their Aracibo station is 1280), WNEL en Caguas." Parallel weaker 630 kHz. [Saylor-PA]  
 770 **COLOMBIA** HJXX, *RCN*, Bogotá FEB 20 0100 – Pips, time check, "Ocho de la noche en Colombia"; over WABC and Cuba. [Connelly-MA]  
 800 **MEXICO** XEROK Cd. Juárez, Chih. FEB 18 1303 – Paeon to Papa Francisco who just visited Juárez; XEROK holding own by skywave at right angle to groundwave from KQCV. [Hauser-OK]  
 840 **HAITI** *Radio 4VEH*, Cap Haitien FEB 20 0100 – Electronic 5-note "Dashing Through the Snow" interval signal, hymn, man in French; over Cuba. [Connelly-MA]  
 840 unID FEB 17 0536 – WHAS has a heavy 6 Hz SAH, but can't hear any other audio. Wonder what that could be? [Hauser-OK]  
 860 **MEXICO** XENL Monterrey, NL FEB 17 0532 – Romantic music in Spanish from south is dominant, no problem from eastward KKOW, in somewhat auroral conditions; 0602 choral Mexican national anthem, 0606 ID as *R.Recuerdo*, i.e. XENL, 5/1.5 kW. [Hauser-OK]  
 940 **BRAZIL** ZYJ453 Rio de Janeiro FEB 20 0001 – Man in Portuguese; slightly under WIPR. [Connelly-MA]



- 940 **MEXICO** XEQ *Ke Buena*, México, DF FEB 20 0100 – Ads before the hour by man and woman in Spanish, mentions of México, no ID at top of the hour but "La Ke Buena" singing ID at 0102 UTC. [Saylor-PA]
- 940 **PUERTO RICO** WIPR San Juan FEB 20 0001 – San Juan advert; over Brazil. [Connelly-MA]
- 990 **COLOMBIA** HJCH, RCN, Medellin FEB 20 0000 – Banco Popular mention/advert, bell; momentarily over dogpile. [Connelly-MA]
- 990 **MEXICO** XET Monterrey, NL FEB 19 0450 – Poor signals in the mix with Mexican styled music and Spanish talk. Thanks to Rick Dau for suggesting it was them and I checked it against their web live stream and it was them. Not new but very rare here because we can hear them only when CBW is off as they were tonight. [Axelrod-MB]
- 1000 **COLOMBIA** HJAJ, RCN, Cartagena FEB 20 0100 – Woman gave time and ID: "ocho... (something) en Colombia... (something), RCN Radio," over México. [Saylor-PA]
- 1000 **MEXICO** XEOY *R.Mil*, México, DF FEB 20 0100 – 5 + 1 time pips, man with "Radio Mil, Vive México" ID, then a three-note sounder, under RCN Radio. [Saylor-PA]
- 1010 **MEXICO** XEPA *Ke Buena*, Puebla, Pue. FEB 20 0100 – Presumed this with Mexican vocal and instrumental music, "La Ke Buena" signing ID as heard on 940 XEQ (but not parallel to them), sound effects; under WINS. [Saylor-PA]
- 1020 **CUBA** *R.Trinchera Antiimperialista*, Baracoa FEB 20 0000 – "Radio Trinchera Antiimperialista desde Guantánamo" ID by woman; over *R.Reloj*. [Connelly-MA]
- 1020 unID FEB 19 0141 – Praise music in Spanish owns frequency, i.e. 50 kW KCKN Roswell still not nulling toward KDKA; but there is also a heavy SAH of 2.5 Hz, with DF fitting for my semi-local KOKP Perry. I conclude that KOKP is in dead air instead of Triple-Play Sports. Listening further, I hear a weak country(?) music station which seems to be close to the KOKP direction. Not that many 1020's in the USA, and format unmatched any of them, near or far, in NRC AM Log. DF is no good for Mexico either. Maybe it was really one of the three Cubans listed in WRTH. [Hauser-OK]
- 1030 **MEXICO** XEQR *R.Centro*, México, DF FEB 20 0100 – Ethereal female vocal music, "Radio Centro calidad en tu vida" slogan. [Saylor-PA]
- 1100 **BRAZIL** ZYK694 *R.Globo*, São Paulo FEB 20 0001 – Two men in Portuguese (phone interview); to fair peak. [Connelly-MA]
- 1140 **BRAZIL** ZYH449 Salvador FEB 19 2359 – Man in Portuguese (possible preaching); under CBI. [Connelly-MA]
- 1220 **BRAZIL** ZYJ458 *R.Globo*, Rio de Janeiro FEB 20 0000 – Globo ID, audio sweep; mixed with WWSF. [Connelly-MA]
- 1220 **COLOMBIA** HJFF *Emisora 1220*, Barranquilla FEB 20 0100 – ID as "HJFF, Emisora Mil Dos Cientos Veinte (1220) AM, Barranquilla"; in mush. [Connelly-MA]
- 1620 **CUBA** *R.Rebelde*, La Habana//Amancio//El Coco//Guantánamo-Antiguo FEB 19 0137 – Spanish pop music. Must be *Rebelde FM*, since not parallel 1180 or 5025 which are in béisbol. Well, their top players defecting to MLB still have their choice of *Rebeldes* in América! [Hauser-OK] FEB 24 0701:11.5 – Two-tone time signal 71.5 seconds late, and *R.Rebelde* ID. [Hauser-OK]



### CONTRIBUTORS

Shawn M. Axelrod VE4DX1SMA, VEPC4SWL, Winnipeg MB; ICOM ICR70, Drake R8, MFJ 1026 phasing unit, 3-ft un-amplified box loop, Quantum QX Loop v2.0, 155-ft U-shaped outdoor wire, 100-ft indoor wire run around the basement walls.

Mark Connelly WA1ION, South Yarmouth MA; Microtelecom Perseus, cardioid-pattern SuperLoop 10m vert. by 11m horiz. (peak 165°, null 345°), cardioid-pattern SuperLoop 11m vert. by 30m horiz. (peak 80°, null 260°).

Glenn Hauser, Enid OK; NRD-545 with ALA-330S or north/south not very long wire, DX-398 or PL-880 with internal antenna only, sometimes FRG-7 with ~100-ft east/west longwire.

Terry L. Krueger, Clearwater FL; NRD-535, IC-R75, roof dipole, active loop.

Brett Saylor, State College PA; Perseus SDR with 16 x 36-ft SuperLoop at 180°.

### **International News**

**MEXICO:** Changes at Grupo Radio México, Ciudad Juárez: **720** XEJCC *El Fonógrafo*, ex *Extremo 720*; **970** XEJ *R.México Noticias*, ex *La J Mexicana*; **1190** XEPZ *R.Centro*, ex *R.Norteña*; **1240** XEWG *La Jefa*, ex *Cambio 1240*; **1300** XEP *R.Mexicana*, ex *Radio 13*; **1460** XEYC *R.Fórmula*, ex 1030 kHz. [Héctor García Bojorge via Mauno Ritola, WRTH via Central American News, ed. Tore Larsson, Feb MW News via DXLD]

# Long Beach Island 14 DXpedition Report

Compiled by Russ Edmunds

The 14th annual Long Beach Island DXpedition was held November 13-16, 2015 at our long-time base, the Drifting Sands Motel in Ship Bottom, NJ. Some of the participants arrived Thursday, others Friday and one or two were able to attend only for one evening. Upon arrival, we discovered that since the 2014 event, a major beach replenishment project had been undertaken, resulting in a total re-configuration of beach access and protection, including a large new dune at the back of the beach.

This coupled with another redesign of the fence protecting the dune made it immediately evident that there would be no use of BOG's this year or going forward. We were able to deploy the 16x36' flag, the 6' broadband loop and two Wellbrook loops.

Conditions however were at best mediocre with a few TA's evident Thursday evening, but mostly nothing after that, and also there was no significant enhancement to the South either. Thus much of the group's effort was directed toward domestics this time. This was a distinct disappointment knowing that a number of previous regular TA transmitters on both LW and MW would be closed down before our 15th gathering.

As is often the case when conditions work against us, there was plenty of time for DX chat, checking out the various SDR's, and repairing or retuning some of the Drake R8 series receivers.

The new configuration on the beach includes a landing atop the dune along the main access area to the beach. In addition to providing an excellent vantage point for one of our antennas, this also will permit us to relocate our operations to the end of the building closest to that accessway which in turn will permit us some added area for loops, and also a better radius for them, as we will now be able to aim inland without directing the antenna pattern through the building.

The LBI-14 attendees:

Russ Edmunds (WB2BJH) – Blue Bell, PA – 2 Modified Sony ICF 2010's  
 Brett Saylor (W3SWL) – State College, PA – Perseus SDR, ELAD FDM-S2 SDR  
 Kris Field – Horsham, PA – NRD-545; ELAD FDM –S2 SDR  
 Michael Hunter (W2MHZ) – Neshanic Station, NJ – Perseus SDR  
 Ralph Brandi – Middletown, NJ – Perseus SDR  
 Bob Galerstein (WB2VGD) – Monroe, NY (Friday night only) – Drake R8B  
 Dave Hochfelder (N2HTA) – Albany, NY – Perseus SDR  
 Chuck Rippel (WA4HHG) – Chesapeake, VA – WinRadio G33 Excalibur Pro  
 Rob Stonier (WE2Z) – Hawthorne, NJ – Drake R8  
 Jim Chenard – Blairstown, NJ – Drake R8  
 Nick Langan (W2NJL) – Tabernacle, NJ (Saturday night only)  
 All – 16x32' pre-amplified flag, 6' pre-amplified Broadband Loop, Wellbrook ALA-1530

The LBI 14 loggings:

## Trans-Atlantic Loggings (all times UTC)

162 **FRANCE** France Inter, Allouis NOV 13 0400 – Presumed with weak talk by woman.  
 171 **MOROCCO** R. Mediterranée Internationale, Nador NOV 13 0400 – Presumed, weak with flute music.  
 621 **CANARY ISLANDS // SPAIN** RNE NOV 12 2335 – Super signal, female singing and talk by man in Spanish, ID 2337 and 0000, // 855.  
 711 **UNID** NOV 12 2328 – Arabic singing, several possibilities.  
 855 **SPAIN** RNE NOV 12 2308 – Spanish talk by man.  
 1008 **CANARY ISLANDS** Punto Radio Las Palmas NOV 12 2330 – Good signal with Spanish talk by man and woman, music, mention of “Punta Maria” and “Punta Radio.”  
 1053.107 **UNID** NOV 12 2348 – Libya? Middle Eastern music peaked briefly, up and down after that.  
 1206 **FRANCE** France Info NOV 12 2355 – Talk by man in French.  
 1215 **SPAIN** COPE synchros NOV 12 2358 – Talk by man // webstream, 5 kW.  
 1413 **SPAIN** RNE Radio 5 NOV 12 2331 – Spanish talk by man // 1305.  
 1422 **UNID** NOV 12 2337 – Talk in what sounded like Arabic, maybe Egypt? Heard after 0100 with Arabic-style singing.  
 1521 **SAUDI ARABIA** BSKKA NOV 13 000 – Great signal with female announcer in Arabic.

## Pan-American Loggings (all times UTC)

530 **CUBA** R. Rebelde, synchros – NOV 14 0000 – ID, the usual.  
**CUBA** CMBQ R. Enciclopedia, Villa Maria – NOV 14 0059 – ID over Rebelde.

- 550 **CUBA** R. Rebelde, Pinar del Río – NOV 14 0000 – ID, the usual, // 530.
- 560 **CUBA** R. Rebelde, Moa – NOV 14 0800 – Rebelde stingers during news headlines, ID.
- 570 **CUBA** CMDR R. Reloj, Santa Clara – NOV 14 0000 – ID, time pips, “RR” Morse Code ID.
- 580 **CUBA** R. Rebelde, Guantánamo – NOV 14 0501 – Cuban national anthem.
- 590 **CUBA** R. Musical Nacional, Havana – NOV 14 0003 – Cuba Radio drama, credits, ID.  
**CUBA** R. Rebelde, Santa Clara – NOV 14 0400 – Music // 600, 620, 670, 710.  
**DOMINICAN REPUBLIC** HIDV R. Santa Maria, La Vega – NOV 13 \*0900 – Interval signal.
- 600 **COLOMBIA** HJHJ R. Libertad, Barranquilla – NOV 14 0500 – “Radio Libertad” ID, “en Barranquilla,” kids yelling “Ya La Libertad,” lively music. New for LBI.  
**CUBA** R. Rebelde, San German – NOV 14 0100 – ID, sports.  
**CUBA** R. Reloj – NOV 13 2317 – “RR.”
- 610 **CUBA** R. Rebelde, sychros – NOV 14 0000 – ID // 620 et al.
- 620 **CUBA** R. Rebelde, Colón – NOV 14 0000 – ID // 610, 530 et al.
- 630 **CUBA** R. Progreso, Camagüey – NOV 14 0100 – ID, live music.  
**PUERTO RICO** WUNO San Juan – NOV 14 0659 – Slogan ID, “Primera con la noticia,” mixing with Progreso.
- 640 **CUBA** R. Progreso, Guanabacoa – NOV 14 0100 – ID, live music // 630.
- 650 **COLOMBIA** HJKH Bogotá – NOV 14 0305 – Presumed with fútbol.  
**CUBA** R. Progreso, sychros – NOV 14 0300 – // 630 and 640, Cuban salsa music, mixing with WSM but more dominant on USB.
- 670 **CUBA** R. Rebelde, sychros – NOV 14 000 – ID // 530, 600, etc.
- 680 **PUERTO RICO** WAPA San Juan – NOV 14 0900 – ID for WAPA and WA2XPA.
- 690 **CUBA** R. Progreso, Santa Clara – NOV 14 0100 – ID // 640, etc.  
**MEXICO** XEMA Fresnillo, Zac. – NOV 14 0100 – Mention of “Estado de Zacatecas,” slogan IDs as “La Mejor” at 0100, 0105.  
**MEXICO** XEN México City DF – NOV 14 0459 – ID as XEN, “un estación de Grupo Radio Centro.”
- 710 **CUBA** R. Rebelde, sychros – NOV 14 2359 – ID, usual stuff.
- 720 **CUBA** R. Progreso, Mabujabo – NOV 14 0100 – ID, live music // 690, 640, etc.  
**NICARAGUA** YNRC R. Católica, Managua – NOV 14 0301 – Multiple IDs, mentions of Managua and the cordoba (Nicaraguan currency), music.
- 730 **CUBA** R. Progreso, La Fe – NOV 14 0100 -ID, live music // 690, 640 etc.  
**CUBA** R. Reloj – NOV 13 2203 – “RR.”
- 740 **CUBA** CMKO R. Angulo, Sagua de Tanamo – NOV 15 0458 – ID, followed by Cuban national anthem, mostly over Toronto.  
**MEXICO** XECAQ R. Formula, Cancún QR – NOV 14 0955 – Presumed, multiple IDs at 0955, 1003.
- 750 **CUBA** R. Progreso, Palmira – NOV 14 0100 – ID< live music // 690, 640, etc.  
**VENEZUELA** YVKS Caracas – NOV 15 0235 – Talk about football teams, over WSB and Cuban, “RCR” ID.
- 760 **COLOMBIA** HJAJ Barranguilla – NOV 15 0255 – Love songs in Spanish, multiple “RCN” IDs, over WJR and Rebelde. More IDs 0258 and 0259 as “RCN” and “La Radio.”  
**MEXICO** XEABC México DF – NOV 0211 – Tentative; Spanish talk with lots of mentions of Mexico.
- 770 **CUBA** CMKB R. Rebelde, Victoria de las Tunas – NOV 15 0459 – Stinger, followed by Cuban national anthem, under WABC.
- 780 **COLOMBIA** unID – NOV 14 0055 – “... Radio” and “Colombia.”  
**VENEZUELA** YVMN R. Coro, Coro – NOV 15 0759 – Lengthy ID.
- 790 **CUBA** CMAQ R. Reloj, Pinar del Río – NOV 13 2359 – ID, time pips for TOH, “RR” Morse Code ID at 0000.
- 800 **BONAIRE** Trans World Radio, Bonaire – NOV 14 0200 – ID in Spanish, mixing with CKLW.
- 810 **BAHAMAS** ZNS-3 R. Bahamas, Freeport – NOV 14 0100 – Weather report for Bahamas, front moving into northwest Bahamas with strong high pressure behind, music.  
**CUBA** CMBC R. Progreso, Guantánamo – NOV 14 0100 – ID, live music // 690, 640, etc.
- 820 **CUBA** CMCA R. Ciudad de la Habana, Arroyo Arenas – NOV 14 0300 – Upbeat female announcer, ID.  
**CUBA** CMDE R. Reloj, Ciego de Avila – NOV 14 0100 – ID, “RR” Morse Code heard as well, under WNYC.
- 840 **CUBA** CMHW Doblebé, Santa Clara – NOV 15 1000 – Music, ID under WHAS, mention of Santa Clara.  
**CUBA** CMKC R. Revolución, Santiago de Cuba – NOV 14 0201 – ID, under WHAS.
- 850 **CUBA** R. Reloj, Nueva Gerona – NOV 14 0000 – Time pips for TOH, “RR” Morse Code.



- 860 **CUBA** CMDB R. Reloj, Jovellanos – NOV 14 0000 – Time pips for TOH, “RR” Morse Code, under CJBC Toronto.
- 870 **CUBA** CMDT R. Reloj, Sancti Spiritus – NOV 14 0300 – Time pips for TOH, “RR” Morse Code, voice ID 0301.
- 900 **CUBA** R. Progreso, San Germán – NOV 15 0801 – ID, over CHML, “Radio Progreso, la onda de la alegría!”  
**MEXICO** XEW “W Radio,” Mexico DF – NOV 14 0500 – “W Radio” IDs.
- 910 **CUBA** CMHA R. Cadena Agramonte, Camagüey – NOV 14 1058 – ID.  
**CUBA** CMBL R. Metropolitana, Villa Maria – NOV 14 1000 – ID.
- 930 **CUBA** R. Reloj, synchros – NOV 15 0800 – RR Morse code ID.
- 940 **CUBA** R. Progreso, Sancti Spíritus – NOV 15 0401 – ID, // 640.  
**MEXICO** XEQ México DF – NOV 14 0157 – Lengthy ID with jingle, “XEQ AM 940 AM,” cinquenta mil watos de potencia.
- 950 **CUBA** R. Reloj, Havana – NOV 14 0000 – Time pips for TOH, “RR” Morse Code ID.
- 960 **CUBA** CMDJ R. Reloj, Guantánamo – NOV 14 0000 – Morse Code ID.
- 970 **MEXICO** XERFR México DF – NOV 13 0200 – “Grupo Formula presenta ...” ID.
- 980 **CUBA** R. COCO, Havana – NOV 14 0059 – Cuban music, ID.  
**CUBA** R. Reloj, Moa – NOV 14 0100 – “RR” Morse Code ID heard under COCO.
- 990 **CUBA** CMAM R. Guamá, San Luis – NOV 14 059 – ID “Esta es Guamá, la señal sonora de la familia Pinarena.”
- 1000 **CUBA** CMCW R. Artemisa, Artemisa – NOV 14 0055 – ID, Cuban music.  
**MEXICO** XEOY R. Mil, México DF – NOV 14 0500 – “R. Mil” IDs into music show, music was a non-stop Spanish version of 1950's songs like "Rock Around the Clock" segueing into each other. Cuban anthem weak under.
- 1020 **CUBA** R. Reloj, Victoria de la Tunas – NOV 14 0000 – “RR.”  
**CUBA** CMKS R. Trincherá Antiimperialista, Baracoa – NOV 15 0500 – ID.
- 1030 **MEXICO** XEQRR R. Centro, Granjas, México DF – NOV 14 0159 – ID in WBZ gap; better ID heard at 0500.
- 1060 **CUBA** R. 26, Jovellanos – NOV 14 0300 – TOH tune, ID.  
**MEXICO** XEEP R. Educación, México DF – NOV 14 0459 – ID, including MW and SW frequencies, “La radio cultural de México.”
- 1080 **CUBA** CMCU R. Cadena Habana, Havana – NOV 14 0159 – ID.
- 1100 **CUBA** CMKQ R. Angulo, Mayari – NOV 14 0100 – Music, “La Poder de la Música,” // 1110.  
**UNID** NOV 14 2350 – Instrumental music, sounds religious or light classical, under WTAM, gone after 0000.
- 1110 **CUBA** CMKOR. Angulo, Holguin – NOV 14 0100 – Music, “La Poder de la Música,” stronger than // 1100.
- 1140 **CUBA** CMIP R. Surco, Ciego de Avila – NOV 14 0059 – ID, program “Ecos de México,” Mexican music.  
**CUBA** R. Rebelde, Cienfuegos – NOV 13 2301 - // 530.  
**CUBA** R. Musical Nacional, Santa Clara – NOV 14 0220 - // 590 with dramatic orchestral music, mxing with another Cuban (Cadena Agramonte?).  
**UNID** NOV 14 2355 – Classical instrumental music, man/woman in Spanish, with WRVA. Likely R. Musical Nacional again.
- 1170 **COLOMBIA** unID – NOV 14 0040 – Colombian fútbol.
- 1180 **CUBA** R. Rebelde, Villa Maria – NOV 13 2359 – Lengthy ID.
- 1210 **CUBA** CMGL R. Sancti Spiritus, Sancti Spiritus – NOV 14 0300 – ID.  
**CUBA** R. Rebelde – NOV 14 0400 – Rebelde stingers, under WPHT.
- 1350 **CUBA** R. Victoria, Puerto Padre – NOV 14 0400 – ID // 1470, provincial station relayed by R. Libertad.
- 1470 **CUBA** R. Victoria, Puerto Padre – NOV 14 0400 – ID “Esta es ... Radio Victoria ... Las Tunas,” provincial station relayed by local R. Chaparra.
- 1540 **BAHAMAS** ZNS-1 Nassau – NOV 12 2240 – Commonwealth Bank ad, Caribbean music, PSA for dengue fever.
- 1550 **CUBA** R. Rebelde, synchros – NOV 14 0000 – ID, under WRHC.
- 1570 **MEXICO** XERF Ciudad Juárez – NOV 14 0300 – XERF and “La Poderosa” ID by woman.
- 1610 **ANGUILLA** Caribbean Beacon, The Valley – NOV 14 0300 – Well-known toll-free number 1-800-338-3030 to attend live service, Pastor Melissa Scott preaching.
- 1620 **CUBA** CMNL R. Bayamo, Bayamo – NOV 14 0601 – ID.  
**CUBA** R. Rebelde, synchros – NOV 14 0100 – ID.
- 1660 **PUERTO RICO** WGIT Canovanas – NOV 14 0300 – ID for WGIT Canovanas and WMTI Morovis, with URL farodesantidad.com.

**Domestic Loggings** (all times ELT)

60	WWVB	CO	Fort Collins – 11/12 2259 – Encoded time signals.
100	--	NJ	Diamond Beach – 11/12 2252 – eLORAN station, pulsing wideband data, newly activated station.
480	--	VA	Forrest – 11/13 2335 – WD2XSH/31, “de wd2xsh/31/31/31.”
540	WFLF	FL	Pine Hills – 11/12 2206 – ID.
550	WAYR	FL	Fleming Island – 11/14 0400 – ID.
	WGR	NY	Buffalo – 11/12 2207 – Bills football.
	WKRC	OH	Cincinnati – 11/13 0200 – ID, Fox news.
560	WVOC	SC	Columbia – 11/15 0159 – ID in mix.
570	WTBN	FL	Pinellas Park – 11/13 2200 – ID under Reloj.
580	WDBO	FL	Orlando – 11/13 2000 – ID “ESPN Orlando” under WHP.
	WGAC	GA	Augusta – 11/14 0159 – ID, CBS news.
	WCHS	WV	Charleston – 11/13 2059 – ID “WCHS, the voice of Charleston.”
590	CJCL	ON	Toronto – 11/12 2210 – Bills football.
610	WIOD	FL	Miami – 11/14 2100 – ID.
620	WDAE	FL	St. Petersburg – 11/14 0059 – ID, under Rebelde.
	WWNR	WV	Beckley – 11/14 2100 – ID, ABC news.
670	WWFE	FL	Miami – 11/13 2101 – Programming in Spanish, ID in English, then Spanish, “La Poderosa,” followed by jingle, into news. Mixing with Rebelde.
680	KKYX	TX	San Antonio – 11/13 2000 – ID, country music.
730	WZGV	NC	Cramerton – 11/12 2109 – ESPN 730, 704 area code in ad.
	WLIL	TN	Lenoir City – 11/12 2300 – Classic Country segues, ID.
740	WYGM	FL	Orlando – 11/14 2259 – ID, sports.
	UnID	--	11/14 1915 – Football, not sure if high school or college.
790	WVCD	SC	Bamberg-Denmark – 11/14 0159 – ID, jazz music, “All of Me.”
800	CKLW	ON	Windsor – 11/12 2006 – Dr. Joy Brown, “AM 800.”
	UnID	--	11/14 1918 – “Rudy Maxa’s World.”
820	WWBA	FL	Largo – 11/13 1820 – Girls’ basketball, multiple FL mentions.
	WWFD	MD	Frederick – 11/14 2059 – ID.
	WBAP	TX	Fort Worth – 11/14 000 – ID, time check, locally produced news, traffic watch.
	WTNW	VA	Chester – 11/14 2058 – ID, into SRN news.
830	WFNO	LA	Norco – 11/14 0057 – Slogan ID “NoLA’s nueva ... La Fabulosa 830,” salsa music, full ID at 0502.
	WEEU	PA	Reading – 11/12 2034 – News, ID.
850	WXJC	AL	Birmingham – 11/14 2130 – ID.
	WFTL	FL	West Palm Beach – 11/13 1900 – ID “Florida’s Talk Leader, 850 WFTL, West Palm Beach-Miami Beach.”
900	WSWN	FL	Belle Glade – 11/15 0459 – ID “WSWN Belle Glade, the new 900 AM, the Talk of Palm Beaches,” CBS news.
	WJLG	GA	Savannah – 11/15 0359 – ID, Fox sports.
	CHML	ON	Hamilton – 11/12 2240 – Buffalo Bills football, ID.
910	WTMZ	SC	Dorchester Terrace – 11/14 1800 – ID, ESPN Sportscenter; 500 watts.
920	WGKA	GA	Atlanta – 11/14 2158 – Slogan IDs 2158 and 2159, “AM 920 The Answer,” news from townhall.org.
930	WGAD	AL	Rainbow City – 11/15 0501 – Oldies music, ID including FM translator, jingle ID, more music.
	WDLX	NC	Washington – 11/13 2001 – Slogan ID: “You’re listening to D.H. Conley High football on Pirate Radio 930 and 1250,” D.H. Conley vs. New Bern football, full ID 11/14 at 0159.
940	WMIX	IL	Mount Vernon – 11/14 0159 – Music, ID, CBS news.
	WCND	KY	Shelbyville – 11/15 0101 – ID “La Explosiva,” rural Mexican music, 250 watts day and 10 watts night.
	WKYK	NC	Burnsville – 11/14 0059 – Country music, ID.
950	WTLN	FL	Orlando – 11/13 2000 – ID, mixing with R. Reloj.
980	WULR	SC	York – 11/14 2300 – ID in Spanish-accented English (transposing call letters to WURL, which is actually on 760 kHz in Alabama), Spanish religious music.
990	WLLI	PA	Somerset – 11/12 2200 – Sports, ID.
	WNML	TN	Knoxville – 11/12 2120 – CBS Sports Radio.
1030	WONQ	FL	Oviedo – 11/14 1700 – ID.
1040	WSGH	NC	Lewisville – 11/13 2001 – ID for several stations including WSGH, Latin music.

- 1070 WNCT NC Greenville – 11/14 1733 – Oldies, “Beach, Boogie, and Blues.”  
 CHOK ON Sarnia – 11/12 2042 – Sarnia Legionnaires hockey.
- 1080 WHIM FL Coral Gables – 11/14 2159 – Religious music, SRN, weather.
- 1090 KAAZ AR Little Rock – 11/13 2000 – ID, news.  
 WTSB NC Selma – 11/14 1701 – ID, news from townhall.com.
- 1130 WLBA GA Gainesville – 11/13 1900 – Regional Mexican music, ID for WAOS and WLBA.
- 1140 WQBA FL Miami – 11/13 1900 – ID in English and Spanish.
- 1150 WBAG NC Burlington-Graham – 11/14 1658 – ID, North Carolina football.  
 WCRK TN Morristown – 11/13 2359 – Tennessee Volunteers football, commercial for natural gas, break for station ID but no ID heard until this time.
- 1190 WAMT FL Pine Castle – 11/13 2059 – ID popping out of the murk.  
 KQQZ MO DeSoto – 11/12 2148 – Country, ID, jingle.  
 WIXE NC Monroe – 11/12 2047 – Country.  
 WCRW VA Leesburg – 11/14 1659 – ID, signing off, national anthem.
- 1200 WOAI TX San Antonio – 11/13 2001 – Fox news coverage of Paris attacks, ID, local headlines and ID, back to Fox news network coverage at 2002.
- 1220 WAYE AL Birmingham – 11/13 2000 – ID in English and Spanish, news reports about Paris attacks.  
 WHKW OH Cleveland – 11/12 2100 – Black Gospel music, lesson, ID.
- 1250 WGHB NC Farmville – 11/13 2100 – ID “You’re listening to D.H. Conley High football on Pirate Radio 1250 and 930,” same game as at 2000 on WDLX-930.
- 1260 WSUA FL Miami – 11/13 1900 – Commercials for something on South River Drive, Super Auto in Hialeah, Hyatt Regency Coral Gables, someone in concert, then quiet, no ID on the hour.  
 WNXT OH Portsmouth – 11/13 2000 – Promo for Urban Meyer call-in show with ID, Ohio State football, break for station identification, another ID.
- 1270 WRLZ FL Eatonville – 11/13 2100 – Religious talk in Spanish, mentions of Guatemala, phone number given, ID at 2101: “WRLZ, la estación del pueblo.”  
 WJJC GA Commerce – 11/13 2000 – Jingle ID followed by spoken ID, serving northeastern Georgia since 1957.  
 WLIK TN Newport – 11/13 2102 – Tennessee Volunteers basketball, ID, mixing with WRLZ.
- 1280 WODT LA New Orleans – 11/13 1900 – Sports talk, host talking to his dog about beating Alabama, partial ID as “AM 1280 New Orleans,” also airing on Charter Channel 333.
- 1290 WJNO FL West Palm Beach – 11/13 1900 – ID with talk, under R&B station.  
 WJCV NC Jacksonville – 11/13 1958 – NC State basketball, ID, Wolfpack Sports Network, ad for Bradley’s Jewelers in Jacksonville on Western Boulevard.  
 WKBK NH Keene – 11/15 0259 – ID.
- 1310 WDKD SC Kingstree – 11/13 2100 – Sports talk, mention of sportstalksc.com, ID for multiple stations including WDKD and WOLH, programmed by Community Broadcasting.
- 1320 WBRT KY Bardstown – 11/13 2259 – Country music, ID “WBRT Bardstown, W246AT Bardstown, 1320 AM and 97.1 FM, your number one station,” AP news.  
 WAGY NC Forest City – 11/13 2100 – Bluegrass music, ID, country music.  
 WGOC TN Kingsport – 11/14 1659 – ID, special report on Paris attacks.  
 WMSR TN Manchester – 11/14 1759 – ID, CBS news.
- 1360 WMOB AL Mobile – 11/13 2101 – “What a friend we have in Jesus,” ID for WMOB and WTOF.
- 1370 WOCA FL Ocala – 11/13 2059 – ID, talk about office romances.  
 WFDR GA Manchester – 11/13 1900 – ID in the mix.  
 WTAB NC Tabor City – 11/13 2359 – ID.
- 1380 WWMI FL St. Petersburg – 11/13 1859 – ID, Radio Disney, One Direction.
- 1410 WNGI AL Mobile – 11/14 1759 – ID.  
 WLAQ GA Rome – 11/13 2359 – ID, CBS Sports Radio.
- 1420 WAOC FL St. Augustine – 11/14 1759 – Slogan ID “Augustine Interactive Radio,” lots of talk about the fun things to do in St. Augustine.  
 WACK NY Newark – 11/14 2059 – ID “Your station for talk and sports in Wayne County and the Finger Lakes, Hometown Radio 1420, WACK Newark.”  
 WEMB TN Erwin – 11/14 1700 – Country music, ID.
- 1430 WKOX MA Everett – 11/14 1859 – PSA for Autism Speaks, ID.



- 1440 WGVL SC Greenville – 11/15 0059 – ID, “Fox Sports Radio 1440 WGVL,” Rhonda Rousey loses boxing match.  
 WKLV VA Blackstone – 11/13 1900 – ID.
- 1460 WQOP FL Jacksonville – 11/13 2100 – EWTN programming, 50 seconds with Mother Angelica, ID.  
 WXEM GA Buford – 11/13 2100 – “La Mejor” // 1130, 1600, with Mexico vs. El Salvador soccer match.
- 1470 WWMN FL Pompano Beach – 11/14 1700 – Florida Restaurant Association commercial, ID.  
 1480 WQOH AL Irondale – 11/13 2000 – ID for WQOH and several other stations, including translators; fuller ID at 2200 matching stations on web site.  
 WPWC VA Dumfries-Triangle – 11/14 1800 – ID in English and Spanish.
- 1520 KOKC OK Oklahoma City – 11/13 2359 – ID, CBS news.  
 1540 KXEL IA Waterloo – 11/12 2134 – News, ID.  
 1550 WRHC FL Coral Gables – 11/13 1859 – ID for WWFE, slogan “La Poderosa.”  
 WTHB GA Augusta – 11/14 1744 – Gospel, ID.  
 WIGN TN Bristol – 11/14 1659 – Commercial for “A Cut for You,” barber in Bristol VA, country gospel music.  
 CBEF ON Windsor – 11/12 2123 – French talk, male/female.
- 1560 WYZD NC Dobson – 11/14 1700 – ID, country gospel music mixing with WFME.  
 1570 WNDA IN New Albany – 11/14 1801 – ID, Mexican music.  
 WECU NC Winterville – 11/14 0400 – ID, NC State Wolfpack Radio Network.  
 UnID -- 11/13 2108 – “La Raza,” either of two possibilities.
- 1580 WVOK AL Oxford – 11/14 1859 – ID, “Tequila Sunrise.”  
 WPMO MS Pascagoula-Moss Point – 11/13 1900 – Sports talk, commercial for some kind of protection for \$18/month, call Jerry @ 228 355 1390, ID.
- 1590 WCSL NC Cherryville – 11/13 1900 – Shelby High School football pregame show, IDs for WOHS-1390 and WCSL-1590.  
 WKPT TN Jonesborough – 11/14 2359 – ID, ESPN for the Tri-Cities.
- 1600 WAOS GA Austell – 11/13 2000 – ID for WAOS-1600, WLBA-1130, slogan “La Mejor.”  
 1610 TIS MD Ocean City – 11/13 0915 – (WPFJ882) Tape loop, MD Transportation Dep’t.  
 1690 WPTX MD Lexington Park - 11/13 0918 – Talk, ID.  
 1700 WEUP AL Huntsville – 11/12 2024 – Gospel, ID.  
 WRCR NY Ramapo – 11/13 0911 – Local events, ID.

# DX Toolbox

Shawn Axelrod, Editor

30 Becontree Bay, Winnipeg MB R2N 2X9, Canada [amandx@mymts.net](mailto:amandx@mymts.net)

Greetings once again from the Heart of the Continent and welcome to the DX Tool Box Column number 79.

**This Month’s Radio Saying:** Towers Get Me High.

## The Way Back Machine:

This time around we are off to visit The New Jersey Antique Radio Club's Radio Technology Museum. Their web site is located at: <http://www.rtm.ar88.net/index.html>

This is a great little site that once again is all about preserving the past for the future generations. The web site gives pictures and information about the museum as well as a floor plan of all the displays. One thing I loved about this site was that the people at the museum have restored the antique equipment to operating condition. The pieces are more than pretty they are functional which I feel is quite a feat.

The museum is also the site of the National Broadcasters Hall of Fame as well as the U.S. Army Signal Corps of Tactical Communications in World War II. This is not just one museum but three. And finally I have to give the address as it really tells you that this is a radio museum: Behind The Marconi Hotel, 2201 Marconi Road, Wall Township, NJ.

## You have been doing this how long?

I may be able to call myself a long time DXer now. February 12, 1971 was the day I started to DX for real. I had listened a bit before but that is the first date in my Logbook. I logged KG6CF from

Johnston Island in the Pacific on 28.6 MHz at 2215 GMT. And so I started 45 years of being in the DX hobby.

I have kept a Logbook on paper since that date and actually have all of my loggings from the last 45 years in nine binders by year in my radio room. I have gone through all of that paper and created an electronic Logbook listing the stations and countries I have heard on the various bands. It is amazing to look back at what you did hear all those years ago. I have it online as a backup (I don't wish to re-create it again from scratch) so if you want to have a peek at it go to:

<http://www.angelfire.com/mb/amandx/shawnlogbook.html>

My first radio was a Heathkit MR-1 COMANCHE with an outboard power supply and 10 KC readout on the rotating drum dial. I bought it used from a local Ham operator. And yes I did keep that radio although I have bought and sold others over the years. It sits on top of a bookcase in the radio room in the basement at home. I have been through several radios and these days I DX with my Drake R8 and my trusty ICOM IC-R70 and an ICOM IC-R7000 for VHF and UHF.

Things have changed lots over all those years since I was 17 years old: I got married, raised 2 kids, had a 36-year career with Manitoba Hydro and now have 5 grandchildren. I have written for CIDX, ODXA, IRCA, NRC, PopComm, and material from my AMANDX web site has been used by web sites and stations around the world.

The one thing that has not changed is my love of DX'ing. I started off DX'ing the Ham bands as I joined the ham radio club at my high school Garden City Collegiate Institute (VE4GY "Golden Youth") in Winnipeg MB. I never did get my license but I never stopped listening to the radio either. I later progressed from the Ham bands to all sorts of DX from DC to Daylight as they say.

#### Bits and Bites from the NRC listserv:

From: Les Rayburn N1LF, Maylene AL <les@highnoonfilm.com>

Re: Wireless AM Telegraph Key

As a boy of 7-8 years old (late 1960's) I remember attending a ham radio club meeting in Cleveland, TN. One of the members there had a straight key that transmitted modulated CW to any nearby AM radio. Basically, a wireless code practice oscillator. The range was very limited, probably less than 100 feet but it worked well. He loaned it to me while I was learning the code—and I thought it was the coolest gadget ever. Soon after, I moved onto a novice ticket and 80 Meter CW. The key was returned to him, and I didn't think of it again for years. Searched high and low on EBay, but without a manufacturer or other clues, it's proven impossible to find. Does anyone on the list recall these keys? Any idea who made it, or how I might go about finding one? Any information would be most welcome.

From: Les Rayburn N1LF, Maylene AL <les@highnoonfilm.com>

Re: Of Hyperbands and Hams

A broadcast engineer waxes nostalgic while listening to the "expanded band" at night. He transforms into a magical land that he calls the "hyper band." Not to be missed.

<http://www.radiomagonline.com/deep-dig/0005/of-hyperbands-and-hams/37408>

73 for this time Shawn **Remember On a Clear Day You Can Hear Forever**

## From the *DX News* archives ....

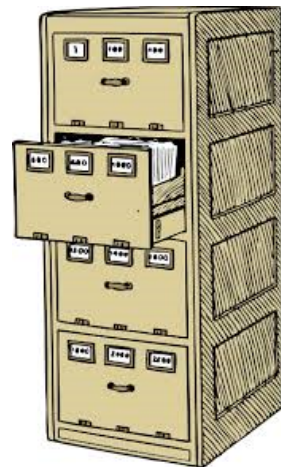
*Now thanks to Ron Schiller.*

**75 Years Ago** – From the February 22, 1941 issue of *DX News*: Steve Mann of Lakewood, Ohio listed 16 Australian/New Zealand stations "being heard almost every AM!" George Cryder in Delaware, Ohio reported a dozen TPs heard. Proctorville, OH's controversial DXer, Dave Thomas likewise listed 8 TP loggings.

**50 Years Ago** – From the February 26, 1966 issue of *DX News*: Omaha's Ernest Wesolowski has Nebraska 100% logged at 47 stations. Norman Maguire in Honolulu opined that Hawaiian veries were "hard to get" & that he'd visit his 5 unanswered stations.

**25 Years Ago** – From the February 25, 1991 issue of *DX News*: Stations going silent included WLAS. 910 Jacksonville, NC lamenting that 30k troops deployed from nearby Camp Lejeune had devastated them. CKBS, 1240 St. Hyacinthe, Quebec said they lost a half million \$ in a year! These were listed in Jerry Starr's "AM Switch" column (he of WHOT 'fame').

**10 Years Ago** – From the February 27, 2006 issue of *DX News*: Wayne Heinen reported 10 "X" band loggings including 680-watt WDSS, 1680 Ada, MI from his CO QTH. WJTO, 730 Bath, ME DX Test barely audible in NY, NJ & ON.



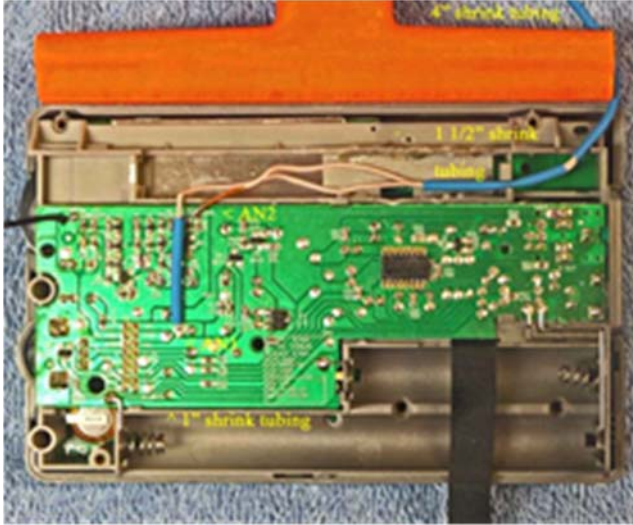


## Three-Inch FSL – Tecsun PL-380 Model Compact Breakthrough in MW Sensitivity, Selectivity, and Portability

Gary DeBock – Puyallup WA – January 2016

(continued from last issue)

18. Refer to the photo on the previous page. Carefully tin the ends of both Litz wires in the manner described above, working around the circumference of the Litz wire ends with a clean soldering iron for at least 1/4" (6 mm). After doing this, cut off the tinned section on both ends to a length of 1/8" (3 mm). When viewing the ends of the Litz wires after tinning, the entire 1/8" (3 mm) length should be bright and shiny all around its circumference, as shown in the photo at left. The cut surface of the Litz wire (the circular face) should also be bright and shiny, with one solid surface of melted solder.

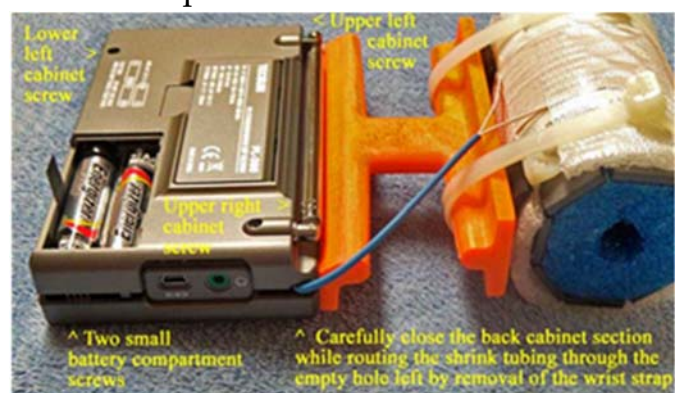


19. Refer to the photo at left. Take the prepared ends of the Litz wires and route them as shown in the photo above, with the 1 1/2" (38 mm) section of shrink tubing placed in the cabinet clamp as shown, and the end of the 4" (102 mm) section of shrink tubing (coming from the FSL coil) also positioned as shown (where it will be run through the empty wrist strap hole, in the back cabinet

side panel). Before placing the 1 1/2" (38 mm) long section of shrink tubing in the cabinet clamp refer to the picture at the top of the next page, and ensure that there will be sufficient slack in the 4" (102 mm) shrink tubing to be run from the FSL coil to the wrist strap hole (3/8" or 9 mm down from the top of the cabinet) without binding.

Ensure that the circuit board points "AN1" and "AN2" still have a small amount of melted solder on them (after removal of the PL-380 stock loopstick, as described in the Loopstick transplant article). Also ensure that there is no excessive length in either of the Litz wires, since these both must be positioned as shown (if necessary, cut one or both to the proper length, and re-tin them as described in the previous step). Place the end of the shorter Litz wire (going to the AN2 circuit board point) down in a horizontal position as shown, and using a MINIMUM of heat (and no additional solder), solder the pre-tinned Litz wire end to the AN2 circuit board point while the wire is in a horizontal position. Carefully observe the connection to ensure that there are no solder bridges to the adjacent circuit board components. After ensuring this, temporarily move the 1" (25 mm) section of shrink tubing away from the end of the longer Litz wire, and following the detailed procedure described for the AN2 connection above, carefully solder the end of the longer Litz wire to the AN1 circuit board point in a horizontal position as shown, using a MINIMUM of heat (and no additional solder). Once again ensure that there are no solder bridges to adjacent components, and that the wire is in a horizontal position, as shown. Then slide the 1" section of shrink tubing down over the Litz wire to the position shown in the photo.

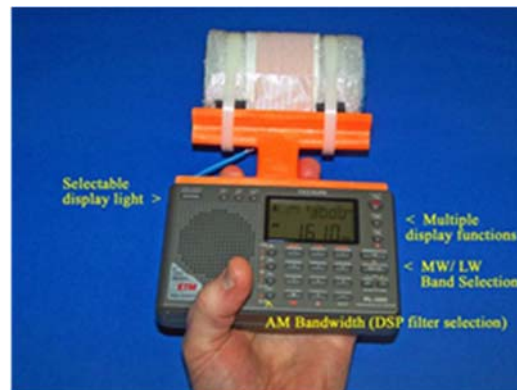
20. Refer to the photo at right. After ensuring that your Litz wire connections and the wires' positions resemble those in the previous photo, take the PL-380's back cabinet section and carefully bring it close to the radio, as shown in the photo. Ensure that the whip antenna's lead-in wire is not pinched, and also ensure that the 4" (102 mm) section of shrink tubing is routed in a position close to the empty wrist strap hole in the back cabinet, as shown. As a first step, carefully mate the radio's back cabinet to the radio's right side (the one opposite the wrist strap hole) while continuing to guide the shrink tubing through the wrist strap hole. Finally, center the shrink tubing in the wrist strap hole while mating the remaining (left) side of the cabinets together. Ensure that the shrink tubing is not pinched or extremely tight as it is clamped down in this hole. While holding the two cabinet sides together move the whip antenna up and away from the cabinet screw hole underneath, and insert the first cabinet screw, tightening it temporarily to keep the shrink tubing in position. Then insert and tighten the left upper and left lower cabinet screws thoroughly, while snapping the right lower cabinet sections together. Finally, after ensuring that the Litz wires' shrink tubing is still in the center of the wrist strap hole without any binding or excessive stress, tighten the final cabinet screw near the whip antenna base. Reinstall the two small battery compartment screws and reinsert batteries.





## INITIAL TESTING

If you are not familiar with the PL-380, make sure that you study the owner's manual to find the location of basic operating controls. It is important to initially test the radio in a location free of computer noise or other RF pollution – preferably in an outdoor location where its capabilities can be appreciated. Refer to the photo on the next page. Turn on the radio and select the Medium Wave band (530-1700 kHz in North America) and set the AM bandwidth control to the most selective (1 kHz) position (NOTE: This position also provides maximum MW and LW sensitivity for the model, although the higher audio frequencies are limited somewhat by the sharp DSP filtering). If your FSL antenna transplant is working properly you should notice an EXCEPTIONAL increase in the signal strength of weak fringe stations relative to the stock PL-380 model, and a very significant increase in fringe station strength relative to a 7.5" loopstick PL-380 model. Check fringe station strength across the band, and you should notice MW reception far superior to that of any stock portable in your collection. If you are not receiving any MW signals the problem is usually easy to trace – either one of the PL-380 circuit board connections is shorted to adjacent components because of too much solder, or the physical stress on the Litz wires (because they were not soldered in a horizontal position) has caused the circuit board connections to break off and separate from the board. In the first case you can attempt to remove excess solder by turning the circuit board upside down and melting the excess solder onto the tip of your soldering iron (or using a "solder sucker" in a normal position), but in the second case you will probably need a technician to restore proper function to your radio. Fortunately both of these problems are rare, and can be entirely avoided by carefully following the instructions in Steps 18 and 19.



## OPERATION

The triple advantage of superior FSL sensitivity, powerful audio amplification and sharp DSP selectivity provide this breakthrough model with exceptional weak-signal performance for a portable – to the extent that after a few DXing sessions the operator may have the impression that the realm of science fiction has been approached. The cylindrical shape of the FSL antenna seems to provide a bonus capability of unusual nulling function as well, so that multiple weak signals can be received adjacent to (or on the same frequencies as) local pests.

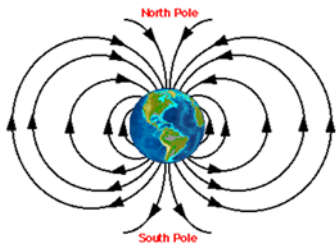
During DXing sessions it is a good idea to support both the PL-380 and FSL antenna frame in the same hand (as shown in the photo above), and also to avoid sudden mechanical stress or bumps to the antenna frame. When constructed according to this article the glue bond between the antenna frame and PL-380 is sufficient for routine operations, but the DXer should exercise care to avoid bumps, drops or other stress. The FSL antenna itself is fairly rugged, as constructed.

Refer to the photo above. The PL-380 has many digital search functions and advanced capabilities for a pocket radio, but some of the functions of particular interest to the transoceanic DXer are described here. The "AM Bandwidth" switch allows you to choose different levels of DSP filtering to limit splatter from domestic pests, and is usually left in the 1 kHz position for the narrowest filtering while chasing transoceanic DX (although this position does cut off some of the high frequency audio from the desired DX station). The 9/10 kHz switch allows you to change the tuning steps of the radio from the North American (10 kHz) band system to those of the European/ African/ Asian/ Pacific band system (9 kHz), depending upon your preferred DX targets. The MW / LW switch allows you to switch over to Longwave DXing – and you will be pleasantly surprised to discover that your newly installed 3" Bar FSL antenna is FAR more sensitive on the Longwave band than the stock PL-380 loopstick. Finally, the Display switch offers you multiple options while chasing transoceanic DX – you can have a 24 hour clock display, a display of the alarm time set in the radio, a constantly changing readout of DX signal strength and S/N ratio, or a temperature display (in either Celsius or Fahrenheit).

Because the antenna frame has been trimmed to allow full operation of the PL-380's whip antenna to receive SW and FM signals, it's possible to check the Shortwave parallels of Medium Wave DX stations (and switch back and forth) within a couple of seconds. In general, this "science fiction" PL-380 model's sensitivity and selectivity will allow you to experience the most exciting AM-DXing fun that a portable can offer – and do so at an unbeatable price.

This hard-wired FSL-enhanced PL-380 model is the first in a series of portables designed to be the ultimate "travel radios," with DXing potential superior to any stock design. It has been a great thrill to design, construct and introduce this model, which is pretty fanatical in both its appearance and DXing capabilities. My hope is that its function will inspire those who build and use it, and help them share my impression that the MW-DXing hobby has a very innovative and exciting future!

73 and Good DX, Gary DeBock



# Geomagnetic Indices

Geomagnetic Summary January 2016

Via Phil Bytheway – Tabulated from email status daily (K = 0000 UTC).

Date	Flux	A	K	16	100	4	1	no storms	
Space Weather				17	101	4	1	no storms	
1/1	98	27	2	<b>moderate, G2, R1</b>	18	100	5	3	no storms
2	100	10	2	minor, R1, S1	19	98	11	1	no storms
3	102	7	3	no storms	20	100	25	4	minor, G1
4	95	4	1	no storms	21	104	<b>32</b>	4	moderate, G2
5	95	7	3	no storms	22	101	14	2	no storms
6	100	17	4	minor, G1	23	99	12	1	no storms
7	103	14	1	no storms	24	104	11	2	no storms
8	109	8	2	no storms	25	108	3	0	no storms
9	107	6	1	no storms	26	<b>115</b>	4	1	no storms
10	109	7	2	no storms	27	113	5	1	no storms
11	108	14	4	no storms	28	110	6	1	no storms
12	106	14	3	no storms	29	107	3	1	no storms
13	104	14	2	no storms	30	105	3	1	no storms
14	103	8	3	no storms	1/31	101	10	4	no storms
15	104	6	1	no storms					

Sx – Solar Radiation Storm Level / Gx – Geomagnetic Storm Level / Rx – Radio Blackouts Level.

## Domestic DX Achievements

David Yocis, Editor

9412 Ferry Landing Ct., Alexandria, VA 22309 – [NRCDXNews@gmail.com](mailto:NRCDXNews@gmail.com)

We haven't run this column in a long time, but we have some space this issue so here it is. One of the main reasons is that many folks haven't updated their totals in a very long time. So if your listing here is out of date, or if you'd like to be added to the list, please send your totals to the address above.

Here's what we show – total **domestic** stations (United States and Canada only, please) heard (H), verified (V), and taped (T). For each category we show total stations, states (the "+" refers to the District of Columbia), and provinces. For this issue, entries are sorted by total stations heard.

Name and location	Year	Updated	TDH	SH	PH	TDV	SV	PV	TDT	ST	PT
Falconer, Jeff – Clinton, ON	1969	Jul 00	2799	49+	10	1070	49+	10	0	0	0
Francis, Steve – nr Knoxville, TN	1970	Oct 12	2798	48+	9	37	36+	0	1108	45+	5
Pimper, Dennis – NE, UT	1939	Dec 06	2540	47	7	425	45	6	651	40	5
Wesolowski, Ernie – Omaha, NE	1958	Jan 08	2474	49+	9	1966	49+	9	0	0	0
Axelrod, Shawn M. – s MAN	1986	Nov 13	2471	50+	10	38	28	3	0	0	0
Schiller, Ron – central NJ	1951	Feb 11	2258	49+	10	1861	49+	10	0	0	0
Fela, Joseph – cent NJ	1961	Feb 13	2105	49+	10	1072	48+	9	400	40+	7
Whatmough, Dave – Hamilton ON	1951	Jan 00	2061	49+	10	1030	49+	10	0	0	0
Wilkins, John – Wheat Ridge, CO	1981	May 08	1958	41	6	1088	40	6	970	40	6
Edmunds, R.J. – n NJ/e PA	1962	Feb 09	1916	47+	9	227	42	6	1084	43+	8
Chatterton, Ken – n NY	1945	Nov 78	1845	50+	10	1101	50+	10	0	0	0
Forth, Karl – vic Chicago, IL	1970	Nov 78	1771	48+	10	1088	48+	10	1077	48+	10
Renfrew, Jim – Rochester, NY	1976	Oct 06	1709	47+	10	449	45+	10	68	35	8
Malicky, John – Pittsburgh, PA	1970	Jan 08	1633	42+	6	902	40+	7	1335	40+	6
Heinen, Wayne – CO	1975	Feb 09	1608	42	5	1176	42	5	699	37	6
Bailey, Ron – Shelby, NC	1992	Aug 08	1583	37+	6	5	4	1	0	0	0
Jeter, Karl – Atlanta, GA	1969	Mar 84	1574	44+	6	1193	44+	6	0	0	0
Musco, Ron – nr Hartford, CT	1962	Feb 11	1410	47+	9	1278	47+	9	108	28	3
Dau, Rick – Iowa City, IA	1985	Jul 15	1373	45+	6	48	28	4	33	8	0
Hayes, Harry J. – ne PA	1970	Jul 98	1354	41+	9	185	30	3	641	39+	9
Arruda, Ray – nr Boston, MA	1963	Jan 12	1327	47+	9	1150	47+	9	0	0	0
Wilkins, John – W. Des Moines, IA	1962	Nov 06	1307	45+	7	489	44+	7	0	0	0

Wolfish, Niel – Toronto, ON	1978	Feb 93	1285	43+	10	493	43+	10	402	39	6
Schmidt, Dave – se PA/n DE	1965	Nov 79	1250	48	8	1006	48	8	400	40	4
DeLorenzo, Marc – e MA	1962	Mar 07	1239	45+	10	1	0	0	1	0	0
Onyschuk, Ken – Homewood, IL	1967	Aug 06	1064	43+	6	16	13	0	0	0	0
Rigas, Christos – vic Chicago, IL	1981	Jan 12	1026	47+	9	433	44+	8	0	0	0
Anderson, Roger – Arlington, MD	1938	Jan 06	1017	48+	9	1017	48+	9	0	0	0
Osborn, Forest – Hooker, OK	1970	Jan 12	1004	37	5	27	18	2	0	0	0
Foxworth, Robert – Long Is., NY	1957	Nov 78	1000	49+	10	270	48+	7	400	44+	9
Harrison, Bob – ne NJ	1982	Jun 98	996	36+	7	772	36+	7	0	0	0
White, Thomas – Arlington, VA	1968	Jan 92	994	39+	7	243	38+	7	0	0	0
Lauhead, Richard – nr St. Pl, MN	1971	Feb 11	945	43	6	83	28	6	168	31	5
Truax, Dick – vic. Louisville, KY	1972	Dec 78	935	46+	6	20	17	3	120	35+	5
Sampson, John – Omaha, NE	1954	Dec 78	912	45+	6	912	45+	6	0	0	0
Hardison, Greg – Atlanta, GA	1964	Nov 78	900	36	6	42	19	5	0	0	0
Taylor, Pete – Durham, NC	1952	Mar 00	891	40+	6	208	38+	6	0	0	0
Yocis, David – Harpers Ferry, WV	2004	Dec 11	880	35+	6	0	0	0	159	23+	2
Kureth, Joe – Southern Pines, NC	1963	Jun 71	878	38+	7	92	26+	2	0	0	0
Holland, George – nr Albany, NY	1931	Oct 06	828	49+	9	828	49+	9	0	0	0
Smolarek, Bob – n NJ	1982	Jun 06	817	36+	5	7	7	0	78	16	5
Wolfish, Niel – Winnipeg, MAN	1985	Feb 93	813	37	9	25	10	4	113	10	4
Wallace, Jim – Columbus, OH	1969	Oct 78	795	41+	7	137	36+	3	0	0	0
Swearingen, Paul – e KS	1975	Dec 07	788	44+	7	2	2	0	788	44+	7
Bond, Jerry – Rochester, NY	1962	Oct 78	785	43+	8	0	0	0	50	10	2
Crabill, Perry – VA	1990	Jan 06	779	35+	3	0	0	0	0	0	0
Hardy, Nancy – coastal WA	1969	Dec 84	778	40	5	3	2	0	0	0	0
Ponder, Stephen – Shreveport, LA	1975	Aug 89	769	39+	5	721	39+	5	10	4	4
Winkelman, Bruce – Tulsa, OK	1979	Nov 06	705	36	5	0	0	0	0	0	0
Reed, John – Ponca City, OK	1995	Jan 06	656	40	6	0	0	0	0	0	0
Dau, Rick – South Omaha, NE	2010	Jan 15	900	40	6	5	5	0	1	1	0
Dau, Rick – Spirit Lake/Arnolds Park IA	1989	Jul 15	596	42	6	9	8	0	14	4	0
Edmunds, R. J. – Syracuse, NY	1964	Sep 99	533	45+	9	75	31+	5	0	0	0
Boersma, Philip – w MI	1973	Oct 78	520	41	6	50	24	3	0	0	0
Mount, Paul – ne NJ	1973	Feb 86	489	36+	7	224	33+	6	199	26+	5
Heinen, Wayne – NY	1964	Jan 06	480	44+	9	429	44+	9	30	14	0
Taylor, Pete – Tacoma, WA	1981	Mar 00	468	33	3	70	14	7	399	33	0
Jones, David B. – Springfield, TN	1996	Apr 06	464	34+	4	168	30	4	0	0	0
Taylor, Pete – San Francisco, CA	1958	Mar 00	450	32	7	329	31	7	70	6	1
Sampson, John – Win-Salem, NC	1968	Oct 78	450	30+	1	450	30	1	0	0	0
Tudenham, John – Joplin, MO	1990	Oct 97	444	36	5	0	0	0	0	0	0
Mount, Paul – se OH	1978	Feb 86	390	36+	3	3	3	0	60	25	1
Houdek, Gary – n KS	1975	Feb 06	374	37	4	54	26	1	0	0	0
Alves, Paul H. – nr Boston, MA	1948	Feb 99	352	32+	6	145	25+	5	0	0	0
Sampson, John – Hutchinson, MN	1960	Oct 78	336	42	6	336	42	6	0	0	0
Schiller, Ron – Coeur d'Alene ID	2006	Feb 13	331	14	4	0	0	0	0	0	0
Vervoort, John – Madisonville, KY	2004	Jun 07	303	32+	2	0	0	0	0	0	0
Vervoort, John – Brooklyn, NY	2000	Nov 06	274	31+	5	4	4	0	25	9+	2
Turner, Rick – Bemidji, MN	2005	Jan 06	273	27	5	0	0	0	0	0	0
Sampson, John – Cupertino, CA	1966	Oct 78	258	17	3	258	17	3	0	0	0
Karchevski, Bob - San Fran., CA	1969	Oct 78	249	36	5	198	36	5	197	35	5
Taylor, Pete - Coral Gables, FL	1945	Mar 00	221	29+	3	132	30+	2	0	0	0
Yocis, David – Mt. Vernon, VA	2016	Feb 16	213	24+	2	0	0	0	0	0	0
Sampson, John – New York, NY	1965	Dec 78	181	33+	6	181	33+	6	0	0	0
Edmunds, R. J. – ne ME	1994	Sep 99	172	20	6	0	0	0	0	0	0
Vervoort, John – Murray, KY	2003	Jan 07	152	29+	2	0	0	0	7	7	0
Vervoort, John – Bronx, NY	2003	Nov 06	144	22+	5	0	0	0	0	0	0
Vervoort, John F. – Flint, MI	2010	Apr 11	112	23	5	0	0	0	0	0	0



# A wave of discontent over AM radio proposal

WGY disputes FCC's view that new signal rules will boost service

Albany *Times-Union* – Feb. 25, 2016

When the sun goes down, AM radio signals travel much farther. You can listen to 50,000-watt stations such as WGY hundreds of miles away.

But that could soon change, if the Federal Communications Commission goes through with a plan to let more local stations broadcast through the evening hours and potentially makes changes in the daytime signal of WGY and other powerful stations.

The proposed change in protections to Class A stations such as WGY would ease restrictions on the smaller stations, which are now required to reduce power or change the direction they broadcast their signal so they don't conflict with the more powerful Class A stations.

WGY has begun an online petition drive to oppose the changes.

Called "Save AM Radio," the petition opposes reducing WGY's so-called "protected service area."

The changes, WGY says, "will make it very difficult for many of our listeners to receive our programming, especially at night and during morning and evening drive times."

The station says it was licensed in 1922 and that part of its mission was to provide emergency weather alerts and other important information "in a large, interference-free coverage area."

The FCC, meanwhile, says the changes are being considered in an effort "to help revitalize the AM service."

More local stations would give listeners a wider choice of programming, supporters of the change argue.

But WGY's parent, iHeart Media, told the FCC its 18 Class A stations "are among the only AM stations that garner substantial listenership."

It said those stations would lose an average of 46 percent of their audience with a proposed change in daytime broadcast rules and that rural listeners would be adversely affected by changes in nighttime rules.

After Hurricane Katrina, a Class A station in New Orleans, WWL, teamed up with six other stations to broadcast over a wide area affected by the storm.

Technological and demographic trends are changing the radio market as more people listen through their apps or online, and fewer people live in rural areas.

WGY's online petition is at <http://www.wgy.com/features/save-am-radio-1919/>

The FCC is accepting comments through March 21 and replies through April 18, at [www.fcc/ecfs](http://www.fcc/ecfs). Click on "submit a filing." The proceeding number is 13-249.

## NOAA Space Weather Outlook

Issued February 22, 2016 – For the period February 22-March 19, 2016

Now at <http://www.swpc.noaa.gov/products/weekly-highlights-and-27-day-forecast>

Solar activity is likely to be at low levels with a slight chance for M-class flares (R1-R2 (Minor-Moderate) Radio Blackouts) on 22-29 Feb and 15-19 Mar. C-class flares are expected on 01-14 Mar with a chance for M-class flares due to the anticipated return of Region 2497 (N12, L=087) which produced four M-class flares last rotation.

No proton events are expected at geosynchronous orbit, barring any significant flare activity.

The greater than 2 MeV electron flux at geosynchronous orbit is expected to reach high levels on 22 Feb and 15-19 Mar due to an enhanced solar wind environment caused by coronal hole high speed streams (CH HSSs). Moderate levels are likely on 23-24 Feb, 04-05, 07-08 and 13-14 Mar with low flux levels expected for the remainder of the period.

Geomagnetic field activity is likely to reach G1 (Minor) geomagnetic storm levels on 14-16 Mar and active field conditions are likely on 01, 03, 06 and 17 Mar, all due to the effects of multiple CH HSSs. The remainder of the period is expected to be at quiet or quiet to unsettled levels under a nominal solar wind regime.

## NRC Reprints

We have many reprints available of articles from past issues of *DX News*. There is a full list of articles available and prices at <http://www.nrcdxas.org/>, just look under "Publications." And there are plenty of antenna and receiver books available there too that collect some of our most important and useful past articles on these topics. If you didn't get the DX gift you were looking for during the holidays, come check out what's available.

### FCC SILENT STATION LIST

On FCC site as of February 26, 2016 (84 stations), often less than 100% accurate:

560	WCKL-NY	1130	WRRL-WV	1370	WLLN-NC	1490	KYZS-TX
700	WCNF-AL	1150	WMNY-PA	1380	KDXE-AR		WFAD-VT
710	WUFF-GA	1190	WWIO-GA		KXFN-MO		KJNT-WY
720	KQNG-HI	1220	WREV-NC		WMYF-NH	1500	WMJL-KY
750	KHWG-NV	1230	WLNR-NC	1390	WABB-SC		WASN-OH
790	KEJY-CA		KBNH-OR		KBBO-WA	1510	WBSG-PR
850	WKGE-PA		KRUZ-UT	1400	WFLI-FL	1520	WGTM-NC
900	WOZK-AL		WAMM-VA		WJWF-MS	1530	WDJZ-CT
	WNMB-SC	1240	WDDO-GA		WFOR-MS		WLAK-WI
910	KIYU-AK		WGRM-MS	1410	WYIS-GA	1540	WJZI-IN
	WAEI-ME		KBLL-MT	1420	WRSA-VT		KTGG-MI
	WSRP-NC	1270	KVGH-CA	1440	KPTO-ID		WLEE-VA
	KWDZ-UT	1280	WGLR-WI	1450	WPAM-PA	1550	KKCL-CO
930	WSEV-TN	1300	WBZQ-IN		KCTI-TX		KLFJ-MO
940	WNRG-VA	1310	WDTW-MI		WBVA-VA		KQNM-NM
970	WCHN-NY	1330	WSPQ-NY		WHNK-WV		WUSP-NY
1010	KDLA-LA	1340	KJMU-OK	1460	WXBR-MA		WVAB-VA
1060	KTNS-CA	1360	WHCG-GA		WPON-MI	1580	KHEP-AZ
	WLNO-LA		KELE-MO	1470	WVBS-KY		WTCL-FL
	WGSB-NC		WGBN-PA	1480	WRCK-NY		
1080	KCNM-MP		WHJC-WV		WQTM-NC		
1120	WXJO-GA				KHQN-UT		

## Local radio stations sold to area group

COFFEYVILLE — Robert B. Mahaffey, president of the Radio Results Group in Coffeyville and Independence, announced today the sale of radio stations KGGF 690 AM (news talk), KGGF 104.1 FM (classic hits), KUSN 98.1 FM (country) and KQQF 98.9 FM (adult contemporary) to SEK Media, LLC, headquartered in Bartlesville, Okla., operated by the Potter family.

The stations' new ownership principals are Kevin, Dorea, Kaleb and Taylor Potter. The Potters also own and operate KCD Enterprises, which

includes KWON 1400/93.3 FM, KYFM 100.1 FM, KRIG 104.9 FM and KPGM 1500 AM.

"We are historically very involved in the communities we operate in, and it will be the same in Montgomery, Labette and Chautauqua counties in southeast Kansas," said Kevin Potter. KWON 1400 AM, owned by the Potters since 1996, has won Oklahoma Non-Metro Station of the Year six times under the Potters' ownership for its service to the Bartlesville area.

The Mahaffey family has been the li-

censee and owner of the Radio Results Group since 1991 after purchasing the stations from the Seaton family. Mahaffey is only the third owner of KGGF-AM which features a news/talk/sports format, and has been on the air since 1927. Prior to the Mahaffey family, the Seaton family operated KGGF for more than 40 years.

"The opportunity to be a part of a station with the signal strength and legacy of KGGF in southeast Kansas and northeast Oklahoma is exciting," said Kaleb Potter. Kaleb and his wife

Taylor are third generation broadcasters.

"KGGF and its associated stations have long well served the listeners and customers of southeast Kansas and northeast Oklahoma. Listeners can expect our changes will build upon this heritage," Kaleb Potter said.

Pending approval by the Federal Communications Commission, the new station ownership in Coffeyville/Independence should assume control this spring.

## U.S. NEW STATION CONSTRUCTION PERMITS – STATUS REPORT

As of February 26, 2016, the FCC online database shows **16** outstanding CPs for new stations.

**Two** of these CPs have applied for their LTC. Stations in this category are often heard on the air (sometimes with "program test authority" or PTA) before final licensing is granted.

1380 KVSM Santa Maria CA (U2 650/500) – Applied for LTC 11/4/2013; granted PTA 12/24/2013.

1490 KHTC Malmstrom AFB MT (U1 1000/580) – Applied for LTC 1/20/2011; reported on the air.

The following **11** CPs are within their original 3-year window. Permittees must complete construction and submit an LTC application within three years of the CP being granted (and any appeals of the grant being resolved).

1310 -- Anchorage AK (U1 10000/8100), expires 6/28/2016.

1040 -- Sanger CA (U4 250/1000), expires 12/3/2016.

860 -- Black Hawk SD (U7 50000/350 (ch 22000), expires 2/27/2017.

1340 KSDG Fairbanks AK (U1 1000/1000), expires 4/8/2017.

1020 -- Blue Diamond NV (U4 5000/250), expires 7/26/2017.

1200 -- Chugiak AK (U1 50000/9600), expires 1/28/2018.

1490 -- Bozeman MT (U1 1000/900), expires 1/28/2018.

1580 KWLO Springville UT (U1 10000/570), expires 3/23/2018.

1210 -- Pine River MN (U2 5500/250), expires 4/23/2018.

780 -- Draper UT (U4 1000/250), expires 6/9/2018.

1540 KENT Enterprise NV (U7 10000/270 (ch 3700)), expires 11/6/2018.

The following **3** CPs have expired and are presumably being maintained in the database due to pending appeals or other administrative review procedures: KUCU-1060 Farmington NM, WWNH-1340 Madbury NH, and 1590 Paradise NV.



## National Radio Club

Founded in September, 1933, the National Radio Club is a non-profit organization devoted to the medium wave DX hobby. It is operated solely by uncompensated volunteers. Subscription costs cover printing, postage, and operational costs and are subject to change without prior notice. The opinions expressed in this magazine are those of the individual writer and do not necessarily reflect those of the Publisher or the Board of Directors of the National Radio Club, Inc. Any reproduction of material contained in DX News/e-DXN without permission of the National Radio Club or the author is prohibited. All published material in DX News/e-DXN may be reprinted by the National Radio Club at a later date. DX News/e-DXN published material reprinted in other publications should include an attribution naming the author and DX News/e-DXN as the original source. Construction projects described herein may be hazardous and are to be undertaken at the assembler's risk; the NRC, its officers, and author(s) will not be responsible for any injuries or losses arising during these projects. Tool usage and electricity can be dangerous.

**NRC Board of Directors:** Shawn Axelrod <amandx@mymts.net> – 30 Becontree Bay – Winnipeg MB R2N 2X9 Canada; Wayne Heinen <amradiolog@nrcdxas.org>; NRC AM Radio Log Editor – 4131 S. Andes Way – Aurora, CO 80013-3831; Dave Schmidt <NRCMusings@aol.com> – 49 N. Sumner St., York PA 17404; Paul Swearingen <plsbebdxer@aol.com>; Chairman; Dick Truax <K9RT@aol.com>; NRC Treasurer – P. O. Box 39451 – Louisville, KY 40233-9451.

NRC on the World Wide Web: The NRC web site is [www.nrcdxas.org](http://www.nrcdxas.org); e-DXN is at [www.e-dxn.com](http://www.e-dxn.com) (Craig Krist, webmaster).

**National Radio Club members may choose to receive our print publication (DX News), e-DXN (including online access to the .pdf version of DX News), or any combination of these.**

• **DX News – David Yocis, Publisher/Editor**<NRCDXNews@gmail.com> – 9412 Ferry Landing Ct.– Alexandria, VA 22309; 202-415-3011 [leave voice mail]. (Send only material for publication in DX News.)

• **Subscriptions and Renewals to DX News:** Yearly subscription (20 issues, biweekly in DX season): To a U.S. Address: US\$45.00; to a Canadian Address: US\$55.00; to all other countries: US\$70.00.

• **Subscriptions and Renewals to e-DXN:** Annual registration: \$5.00 for subscribers to DXN; \$15.00 for an e-DXN-only membership. Access the e-DXN web site <[www.e-dxn.com](http://www.e-dxn.com)> and follow the links.

**Send all payments to NRC Headquarters at:**

**National Radio Club**

**PO Box 473251**

**Aurora, CO 80047-3251**

<[sales@nrcdxas.org](mailto:sales@nrcdxas.org)>

**National Radio Club**

**P.O. Box 473251**

**Aurora, CO 80047 – 3251**

Please send all of the following to NRC Headquarters in Aurora:  
• **New subscriptions and renewals for DX News, the DX Audio Service, and e-DXN.com.**

• **Subscription or delivery problems for DX News or DXAS.**

• **Changes of address for DX News.**

• **All NRC Publications orders.**

For multiple items, there's no need to send separate checks or in separate envelopes. It all goes to the same National Radio Club HQ.

Payment options for any item: US\$ funds only; check, money order, or credit card (via PayPal: access <[www.nrcdxas.org](http://www.nrcdxas.org)> ONLY and follow the links), or cash at your risk. (Out of USA: Postal money order or PayPal only; NO checks.)

All checks and money orders should be made out to: **National Radio Club.**

DX News is printed by Peak Printing – 716 South 9th Street – Cañon City CO 81212 – (719) 275-2136 – <[info@peakprintingonline.com](mailto:info@peakprintingonline.com)>

**First-Class Mail**  
**U.S. Postage**  
**PAID**  
**Cañon City, CO**  
**Permit # 22**