

JULY 1968 60¢

FM GUIDE

INCLUDING
THE CONSENSUS BY EXPERTS
ON • EQUIPMENT • RECORDS • TAPES • EVENTS

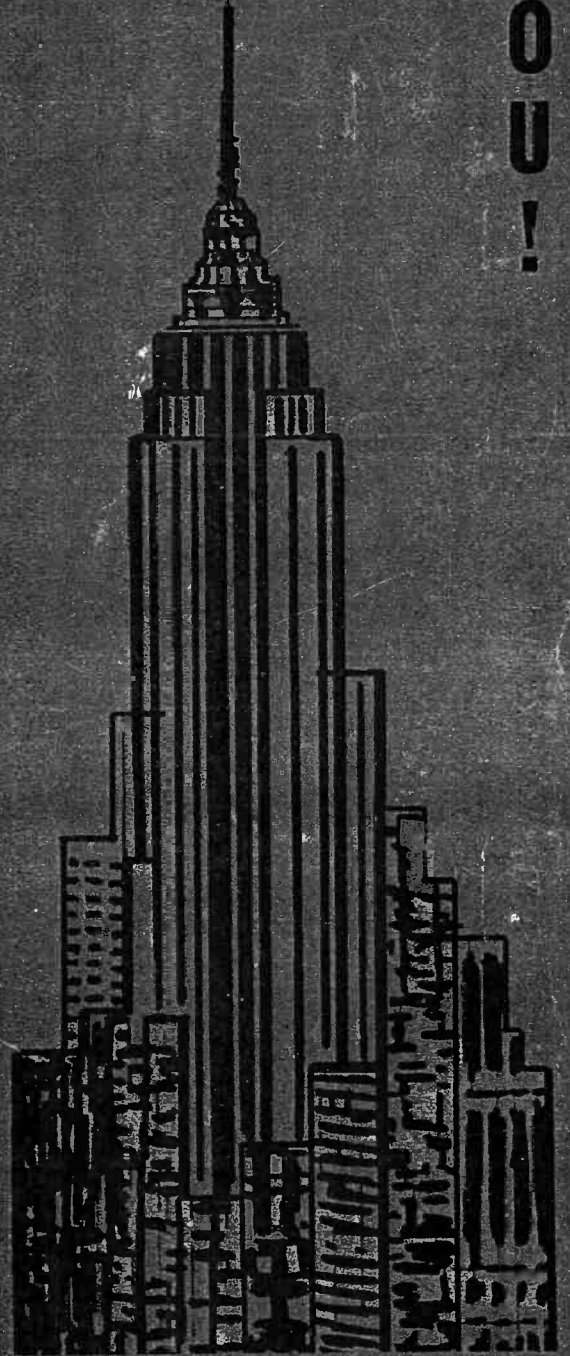
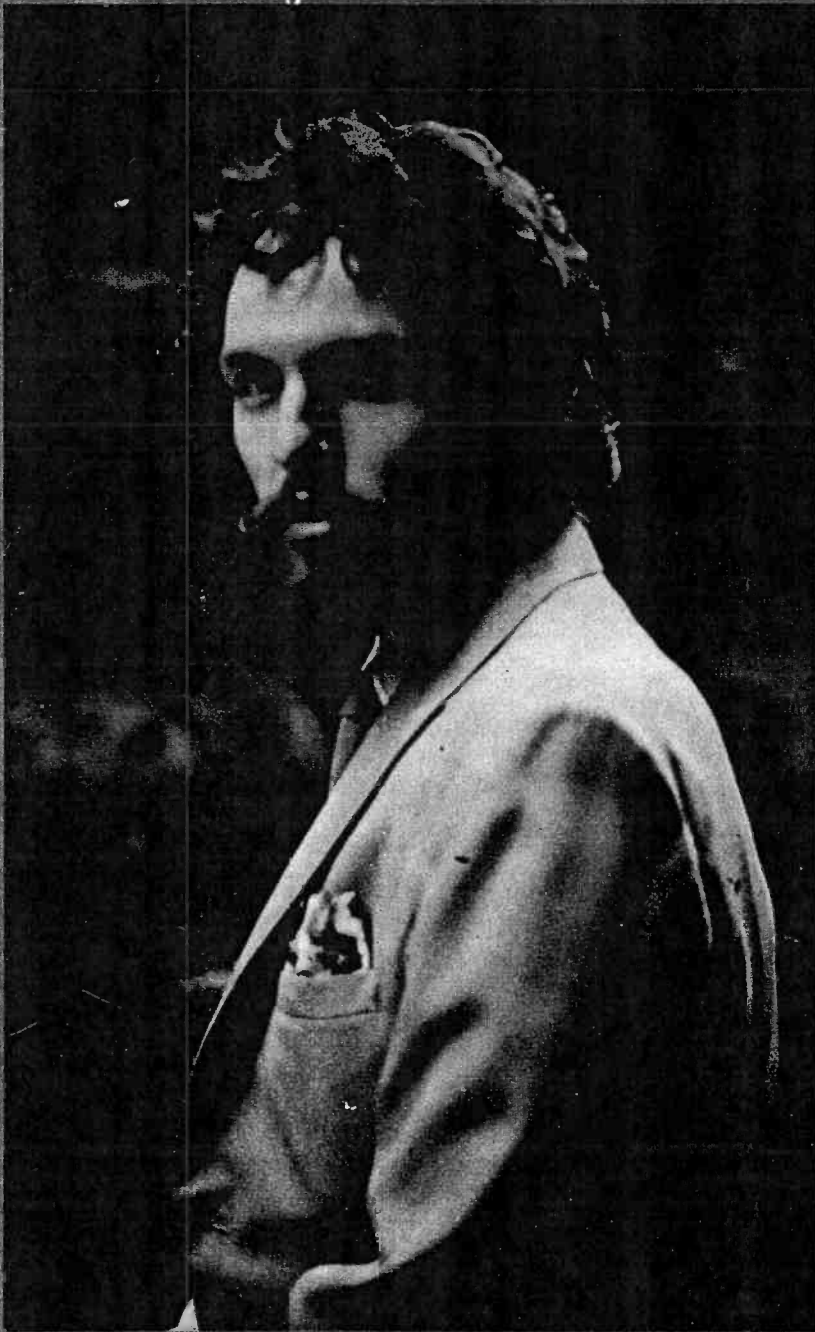
New York

Radio —

PHIL MORRIS

is looking at

YOU!



FOLIO-DIAL: COMPLETE FM AND STEREO PROGRAM LISTINGS

FM stations

(1)	88.1	WCWP	C.W. Post College, Greenvale, L.I., N.Y. 11548
(2)	88.3	WBGO	345 High St., Newark, N.J. 07102
(3)	88.7	WVHC	Hofstra University, Hempstead, N.Y. 11550
(4)	89.5	WSOU	Seton Hall University, South Orange, N.J. 07079
(5)	89.9★	WKCR	208 Ferris Both Hall, Columbia University, 10027
(6)	90.7	WFUV	Fordham University, Rose Hill, Bronx, N.Y. 10458
(7)	91.1	WFMU	Upsala College, East Orange, N.J. 07019
(8)	91.5	WNYE	29 Fort Green Place, Brooklyn, N.Y. 11217
(9)	92.3	WHOM	136 W. 52nd St., N.Y.C. 10019
(10)	92.7★	WLIR	Garden City Hotel, Garden City, N.Y. 11530
(11)	93.1★	WPAT	12 W. 40th St., N.Y.C. 10018
(12)	93.5	WVOX	271 North Avenue, New Rochelle, N.Y. 10801
(13)	93.9★	WNYC	Municipal Bldg., N.Y.C. 10007
(14)	94.3	WJLK	Press Plaza, Asbury Park, N.J. 07712
(15)	94.3	WGSM	379 N.Y. Avenue, Huntington L.I., N.Y. 11743
(16)	94.7	WFME	289 Mt. Pleasant Ave., W. Orange, N.J. 07052
(17)	95.5★	WABC	1330 Avenue of the Americas 10019
(18)	96.3★	WQXR	229 W. 43rd St., N.Y.C. 10036
(19)	96.7	WSTC	270 Atlantic St., Stamford, Conn. 06904
(20)	97.1★	WNBC	30 Rockefeller PL., N.Y.C. 10020
(21)	97.5	WALK	Patchogue, N.Y. Box 230 11772
(22)	97.9	WEVD	117 W. 46th St., N.Y.C. 10036
(23)	98.3	WHLI	384 Clinton St., Hempstead, N.Y. 11550
(24)	98.3	WLAD	198 Main St., Danbury, Conn. 06810
(25)	98.3	WCTC	385 George St., New Brunswick, N.J. 08901
(26)	98.7★	WOR	1440 Broadway, N.Y.C. 10018
(27)	99.1	WAWZ	Zarephath, N.J. 08890
(28)	99.5	WBAI	30 E. 39th St., N.Y.C. 10019
(29)	99.9★	WJZZ	1016 Broad St., Bridgeport, Conn. 06603
(30)	100.3	WVNJ	786 Broad St., Newark, N.J. 07102
(31)	100.7	WLNA	Radio Terr., Peekskill, N.Y. 10566
(32)	101.1★	WCBS	51 W. 52nd St., N.Y.C. 10019
(33)	101.9★	WPIX	220 E. 42nd St., N.Y.C. 10017
(34)	102.3	WBAB	Rt. 109, Babylon, N.Y. 11704
(35)	102.7★	WNEW	565 Fifth Ave., N.Y.C. 10017
(36)	103.3★	WPRB	P.O. Box, 342, Princeton, N.J. 08540
(37)	103.5★	WTFM	173-15 Horace Harding Blvd., Fresh Meadows 11365
(38)	103.9	WFAS	Box 551, White Plains, N.Y. 10600
(39)	103.9★	WHRF	Flanders Road, Riverhead, N.Y. 11901
(40)	104.3	WNCN	2 W. 45th St., N.Y.C. 10036
(41)	105.1★	WRFM	485 Madison Ave., N.Y.C. 10022
(42)	105.5★	WDHA	State Hwy No. 10, Dover, N.J. 07801
(43)	105.9	WHBI	465 Park Ave., New York, N.Y. 10022
(44)	106.1★	WPAC	Box 717 Patchogue, N.Y. 11772
(45)	106.3	WHTG	1129 Hope Road, Asbury Park, N.J. 07712
(46)	106.3	WVIP	Box 608, Mount Kisco, N.Y. 10549
(47)	106.7	WRVR	490 Riverside Dr., N.Y.C. 10027
(48)	107.1★	WRLB	156 Broadway, Long Beach, N.J. 07740
(49)	107.1★	WRNW	78 Lexington Ave., Mt. Kisco, N.Y.
(50)	107.5	WLIB	310 Lenox Ave., N.Y.C. 10027
(51)	107.9	WMMM	Box 511, Westport, Conn. 06880

ALPHABETICAL STATION LISTING

★WABC	95.5	WHBI	105.9	★WOR	98.7
WALK	97.5	WHLI	98.3	★WPAC	106.1
★WAPC	103.9	WHOM	92.3	★WPAT	93.1
WAWZ	99.1	WHTG	106.3	★WPIX	101.9
WBAB	102.3	WJLK	94.3	★WPRB	103.3
WBAI	99.5	★WJZZ	99.9	★WQXR	96.3
WBGO	88.3	★WKCR	89.9	★WRFM	105.1
★WCBS	101.1	WLAD	98.3	★WRLB	107.1
WCTC	98.3	WLIB	107.5	★WRNW	107.1
WCWP	88.1	★WLIR	92.7	WRVR	106.7
★WDHA	105.5	WLNA	100.7	WSOU	89.5
WEVD	97.9	WMMM	107.9	WSTC	96.7
WFAS	103.9	★WNBC	97.1	★WTFM	103.5
WFME	94.7	WNCN	104.3	WVHC	88.7
WFMU	91.1	★WNEW	102.7	WVIP	106.3
WFUV	90.7	★WNYC	93.9	WVNJ	100.3
WGSM	94.3	WNYE	91.5	WVOX	93.5

★ Indicates some stereo operation.

THE FOLIO DIAL

IF YOU GENERALLY JUST "TURN THE RADIO ON AND LEAVE IT"...

Use "FM Guide" to select your station. You see what's on *now* and *what's coming* for several hours ahead on any station you select. Use "FM Guide" to check what you're listening to.

IF YOU REGULARLY TUNE TO ONE FAVORITE STATION...

Use "FM Guide" just as you would an individual station program guide. It's complete from sign-on to sign-off, and your station appears in the same place on the page for each day.

IF YOU ARE A SELECTIVE LISTENER...

Scan across the "dial", from left to right at any time level (6:00 P.M. is the prominent band across the page), you'll see *all the programs then in progress*, and approximately where you'll find them on your own radio dial.

Because The Folio-Dial Lists . . .

EACH STATION SEPARATELY;
IN ORDER OF BROADCAST FREQUENCY;
COMPLETE FROM SIGN-ON TO SIGN-OFF

You Can See . . .

ALL PROGRAMS IN PROGRESS (without turning the page or checking back).

WHERE TO TUNE (not only *what* station, but actually *where* you'll find it on your own radio dial).

And At A Glance . . .

PICK YOUR FAVORITE SELECTIONS (artist, composer, conductor).

FM PROGRAM INDEX

OPERA

Monday thru Friday		
2:05 p.m.	WNBC	Opera-Ballet Theatre
Monday		
8:00 p.m.	WRVR	The Operatic Toscanini
Tuesday		
9:00 p.m.	WFUV	The Operaphile
Wednesday		
8:00 p.m.	WSOC	Wednesday Night at the Opera
8:30 p.m.	WNYC	Wednesday Evening at the Opera
Thursday		
3:00 p.m.	WQXR	Listening To Music
7:30 p.m.	WQXR	Famous Arias
8:30 p.m.	WSTC	Opera in FM
Friday		
8:00 p.m.	WFUV	A Box at the Opera
Saturday		
2:00 p.m.	WNYC	Through the Opera Glass
	WQXR	Opera Hour
9:00 p.m.	WKCR	Saturday Night at the Opera
Sunday		
10:00 a.m.	WBAI	Golden Voices
10:30 a.m.	WQXR	Gilbert & Sullivan
11:00 a.m.	WNYC	Living Opera with Alan Wagner
3:00 p.m.	WDHA	The Opera
3:05 p.m.	WNBC	Opera-Ballet Theatre
4:30 p.m.	WNYC	Opera Topics with Lorenzo Alvary
8:00 p.m.	WRFM	Operatic Highlights
9:05 p.m.	WVNJ	Great Albums of Opera
	WTFM	Opera in Stereo
10:00 p.m.	WALK	The Opera
10:05 p.m.	WLIR	Opera Showcase
1:05 a.m.	WLIR	Opera Highlights

FOLK MUSIC

Monday thru Friday		
6:00 p.m.	WVHC	Strictly Folk
7:05 p.m.	WRFM	Erwin Frankel/Music From Around the World
10:05 p.m.	WCWP	Folk Music
Monday		
7:00 p.m.	WSOU	Radio Portugal
7:30 p.m.	WSOU	Vechernyczy (Ukrainian)
	WQXR	Nights in Latin America
8:00 p.m.	WSOU	Musica of Lithuania
8:30 p.m.	WSOU	Arcobaleno (Italian)
	WKCR	Fine Times at Our House
9:00 p.m.	WFUV	Folk Spectrum
9:05 p.m.	WSOU	Pageant of Ireland
9:30 p.m.	WKCR	Russkie Polchasa
	WSOU	Polka Party
1:00 a.m.	WKCR	Banana Bag

Tuesday		
1:00 p.m.	WSOU	Spotlite on Folk
9:00 p.m.	WKCR	Sha'agat Ha'ari

Wednesday		
7:00 p.m.	WFUV	Polka Party
8:30 p.m.	WKCR	Folksong '67
10:00 p.m.	WCWP	Folk Music
	WKCR	Franciana

Thursday		
8:30 p.m.	WNYC	Adventures in Folk
9:30 p.m.	WKCR	Magyar Sarkok
1:00 a.m.	WKCR	Folk Workshop

Friday		
8:30 p.m.	WKCR	The Village Scene
9:05 p.m.	WSOU	Sounds of Folk
9:30 p.m.	WKCR	Broadsides
	WSOU	New Folk Rock
12:00 Mid.	WCTC	Folk Music with Bob Breen

Saturday		
11:15 a.m.	WBAI	Country Music
12:00 noon	WEVD	New Wave — The Sound of Greece
	WKCR	Son of Buckdancer's Choice

12:15 p.m.	WJLK	Country Concert
1:30 p.m.	WRVR	Bluegrass Unlimited
4:00 p.m.	WDHA	Grass Roots of Folk
7:00 p.m.	WABC	Some Trust in Chariots
7:30 p.m.	WKCR	Sat. Night Folkfest
10:05 p.m.	WSOU	Sat. Nite Folk Concert
1:00 a.m.	WKCR	Nightlife Unlimited from the Cafe Feenjon

Sunday		
8:30 a.m.	WEVD	New Wave—The Sound of Greece
9:30 a.m.	WRFM	Continental Varieties
12:00 p.m.	WKCR	Bluegrass Special
1:00 p.m.	WKCR	Washington Square
2:07 p.m.	WQXR	Folk Music of the World
5:00 p.m.	WPRB	Soul Sounds
5:45 p.m.	WBAI	Country Music
6:00 p.m.	WNYC	Folksong Festival with Oscar Brand
7:05 p.m.	WRFM	Vince Gari—Italian-American Serenade
8:30 p.m.	WKCR	Songs of the Sabras

ALL-NIGHT PROGRAMS

Monday thru Friday		
11:00 p.m.	WEVD	Symphony Sid Show (Ex. Mon./to 3:00 a.m.)
12:00 Mid.	WPAT	The Night Show
	WPIX	Manhattan After Hours
	WNEW	Tower Suite
	WBAI	Radio Unnameable—Bob Fass
	WFAS	Jerry Tano Show
	WFME	Nightwatch (to 6 a.m.)
	WRFM	Stereo for Night People (to 6:45 a.m.)
12:05 a.m.	WTFM	Jazz in Stereo with Rhett Evers
1:00 a.m.	WNYC	While the City Sleeps

1:30 a.m.	WLIR	Stardust (to 3:00 a.m.)
-----------	------	-------------------------

Saturday		
11:00 p.m.	WEVD	Symphony Sid Show (to 3:00 a.m.)
12:00 Mid.	WBAI	The Outside—Steve Post
	WPAT	Night Show
	WFAS	Jerry Tano Show
	WPIX	Manhattan After Hours
	WFME	Nightwatch (to 6 a.m.)
	WRFM	Stereo for Night People (to 7:00 a.m.)
	WNYC	While the City Sleeps
	WHBI	Realrock (to 5 a.m.)
12:05 a.m.	WTFM	Jazz in Stereo with Rhett Evers

Sunday		
12:00 Mid.	WEVD	Symphony Sid Show (to 3 a.m.)
	WNYC	While the City Sleeps
	WPAT	Night Show
	WNEW	Milkman's Matinee
	WPIX	Manhattan After Hours
	WFME	Nightwatch (to 6 a.m.)
	WBAI	The Outside — Steve Post

Live Programs

Monday thru Friday		
6:00 a.m.	WNBC	Big Wilson
	WCBS	Wally King
9:00 a.m.	WNBC	Dr. Joyce Brothers
10:00 a.m.	WFME	Praytime
10:10 a.m.	WNBC	Fortune Phone
12:30 p.m.	WLIR	Lunch with Dore Reed
1:20 p.m.	WJLK	Speaking of Schools
7:45 p.m.	WCBS	Long John Nebel Preview
10:05 p.m.	WFME	The Anvil Hour

Monday		
10:00 p.m.	WFME	Anvil Hour

Tuesday		
8:00 p.m.	WFUV	Recital from Studio B
10:00 p.m.	WMFE	Open Forum
	WSOU	Reaction

Wednesday		
7:00 p.m.	WSOU	Community Education
10:00 p.m.	WFME	Open Forum

Thursday		
9:30 p.m.	WBAI	Talk-Back
5:00 p.m.	WFME	Talk With Teens
10:00 p.m.	WFME	Open Forum

Friday		
8:30 p.m.	WNYC	Metropolitan Museum Concert
10:00 p.m.	WFME	Pastor's Study

Saturday		
3:00 p.m.	WSOU	Seton Spectacular
7:15 p.m.	WJLK	As I See It
7:30 p.m.	WFME	Word of Life
	WFUV	Words and Music
8:00 p.m.	WFUV	Fordham Music Hour
10:00 p.m.	WFME	The Bible Answer Man
1:00 a.m.	WKCR	Nightlife Unltd. from the Cafe Feenjon

Sunday		
11:00 a.m.	WFME	Calvary Baptist Church
3:00 p.m.	WNYC	Live Concert
5:00 p.m.	WRVR	Ministry of Music
7:30 p.m.	WFME	Word of Life

A NEWGROOVE

A
N
A
N
O
O
O
O
A
N
O
O
N
A
T
O
N
A
T
H
O
N
A
T
H
A
O
N
A
T
H
A
N
J
O
N
A
T
H
A
N
J
O
N
A
T
H
A
N
J
O
N
A
T
H
A
N
J
O
N
A
T
H
A
N

Jonathan

10AM-2PM
MONDAY-SATURDAY
WNEW-FM 102.7 METROMEDIA STEREO

SCOTT MUNI EVERYDAY 2-7 ROSKO EVERYNIGHT 7-12
ALISON ALMOSTEVERYNIGHT 12-6

Musical Theatre

Monday thru Friday

10:05 a.m.	WLIR	On Stage
2:15 p.m.	WJLK	Broadway Matinee
2:30 p.m.	WALK	Show Time
3:00 p.m.	WDHA	On Stage
	WHLI	Musical Playhouse
4:00 p.m.	WSTC	Showtime
6:15 p.m.	WPRB	Stereo Showtime
9:05 p.m.	WVNJ	Curtain Time
9:00 p.m.	WALK	Curtain Calls
10:05 p.m.	WLIR	Evening Performance

Monday

8:00 p.m.	WSTC	FM on Broadway
8:05 p.m.	WTFM	Music of America
10:00 p.m.	WFUV	Music from Stage and Screen
7:30 p.m.	WQXR	Movie Mefories, Bosley Crowther

Wednesday

9:00 p.m.	WFMU	45 minutes from Broadway
10:07 p.m.	WQXR	Broadway Theatre

Friday

7:30 p.m.	WSOU	Across the Footlights
9:00 p.m.	WRLB	Show Time

Saturday

10:05 a.m.	WLIR	On Stage
1:00 p.m.	WSOU	American Musical Theatre
2:05 p.m.	WDHA	Best of Broadway
3:30 p.m.	WKCR	Curtain Time

Sunday

10:00 a.m.	WRFM	Operetta Time
	WCBS	Music of Broadway
10:05 a.m.	WLIR	On Stage
10:30 a.m.	WQXR	Gilbert & Sullivan
	WVHC	Broadway Showcase
2:05 p.m.	WCTC	Carousel Theatre Hour
3:00 p.m.	WHLI	Musical Playhouse
8:00 p.m.	WVIP	Box Office

Good Talk

Monday

12:30 p.m.	WLIR	Lunch with Dore Reed
1:30 p.m.	WJLK	Why Not Ask?
2:15 p.m.	WSOU	Speaking of Schools
2:30 p.m.	WSOU	For People At Home
4:00 p.m.	WNYC	Food For Thought
5:00 p.m.	WNYC	Recipes
		This Week with Mayor Lindsay
7:00 p.m.	WKCR	Classroom
7:15 p.m.	WQXR	N.Y. Times Correspondents
7:15 p.m.	WFUV	Urban League
	WKCR	Columbia Press Conf.
	WEVD	You and the Law
8:30 p.m.	WFUV	Bernard Gabriel—The Music Scene
9:00 p.m.	WEVD	Standpoint
10:30 p.m.	WRVR	Listen!
11:00 p.m.	WRVR	World Perspective
	WRFM	Casper Citron
11:30 p.m.	WRVR	Night Call

Tuesday

12:30 p.m.	WLIR	Lunch with Dore Reed
2:30 p.m.	WLNA	Pace Lectures
6:30 p.m.	WCWP	New Dimensions
7:00 p.m.	WKCR	Columbia Forum
	WSOU	What Do You Know?
7:15 p.m.	WQXR	N.Y. Times Views the Arts
7:15 p.m.	WFUV	New Films in N.Y.
7:30 p.m.	WBAI	Whatever Became Of...?
8:00 p.m.	WKCR	China Today
	WRVR	Studs Terkel Interviews
	WEVD	Victor Reisel Interviews
8:30 p.m.	WSOU	Campus Forum
	WSOU	Around the Bases

9:30 p.m.	WEVD	Kaleidoscope
	WEVD	Report on Freedom
10:00 p.m.	WNYC	Audio Showcase
	WSOU	Reaction
10:30 p.m.	WRVR	Listen!
11:00 p.m.	WRFM	Casper Citron
11:30 p.m.	WRVR	Night Call

Wednesday

7:00 p.m.	WKCR	Classroom
	WBAI	Films in Focus
7:15	WQXR	N.Y. Times Correspondents
		Human Rights
9:00 p.m.	WEVD	Ombudsman
9:30 p.m.	WEVD	Labor News
	WRVR	The Theory and Practice of Communism
		Listen!
10:30 p.m.	WRVR	Casper Citron
11:00 p.m.	WRFM	Night Call
11:30 p.m.	WRVR	Night Call
12:00 Mid.	WNYC	Community Action
12:30 a.m.	WNYC	Intn'l Book Review
1:00 a.m.	WKCR	Feedback

Thursday

4:00 p.m.	WNYC	N.Y.U. Lecture
7:00 p.m.	WKCR	Columbia Forum
7:15 p.m.	WQXR	N.Y. Times Correspondents
7:30 p.m.	WSOU	Religious Forum
8:00 p.m.	WKCR	Ayn Rand On Campus
	WKCR	Literary Workshop
	WEVD	Public Forum
9:00 p.m.	WRVR	Studs Terkel Interviews
	WFUV	Fordham University Roundtable
	WRVR	Riverside Radio Roundtable
	WNYC	Cooper Union Forum
10:00 p.m.	WFUV	Fordham University Roundtable
10:30 p.m.	WRVR	Listen!
11:30 p.m.	WRVR	Night Call

Friday

12:30 p.m.	WLIR	Lunch with Dore Reed
10:30 a.m.	WNYC	Pace Lecture Series
7:00 p.m.	WKCR	Classroom
	WSOU	Perspective
7:15 p.m.	WPXR	N.Y. Times Correspondents
8:00 p.m.	WKCR	UN Review
8:15 p.m.	WSOU	Men and Molecules

JAZZ

Monday thru Friday

7:00 a.m.	WRVR	Just Jazz with Ed Beach
12:00 noon	WLIB	The Ed Williams Show
4:00 p.m.	WLIB	The Billy Taylor Show
6:00 p.m.	WRVR	Just Jazz with Ed Beach (repeat)
7:30 p.m.	WLIB	The Del Shields Show
10:00 p.m.	WABC	Portraits in Jazz with Alan Grant
	WHLI	Jazz at 10
11:00 p.m.	WEVD	Symphony Sid Show (ex. Mon.)
11:30 p.m.	WPRB	Sound of Jazz
12:00 Mid.	WCTC	The Midnight Muse
	WFAS	Music After Hours
	WHBI	Jazz Festival
12:05 a.m.	WTFM	Jazz in Stereo with Rhett Evers

Monday

3:00 p.m.	WBAI	Sounds of Today
8:30 p.m.	WVHC	This is Jazz
9:05 p.m.	WCWP	Anything But 50
9:15 p.m.	WJLK	Directions in Jazz

Tuesday

8:30 p.m.	WFUV	Time for Jazz
11:30 p.m.	WPRB	Sound of Jazz

Wednesday

9:05 p.m.	WCWP	Strictly Jazz
-----------	------	---------------

9:15 p.m.	WJLK	Jazz Corner
10:00 p.m.	WBAI	Jazz At Home
11:00 p.m.	WBAI	Sounds of Today

Thursday

1:00 p.m.	WSOU	Spotlite on Jazz
3:00 p.m.	WBAI	The Scope of Jazz
9:05 p.m.	WCWP	Strictly Jazz
11:30 p.m.	WPRB	Sound of Jazz

Friday

8:00 p.m.	WCWP	Jazz Unlimited
9:15 p.m.	WJLK	Art of Jazz
10:00 p.m.	WRLB	Jazz Kaleidoscope
	WSTC	Jazz Idols
	WSOU	Jazz with Harry B. Shapiro

Saturday

11:00 a.m.	WALK	The Big Bands Are Here
12:00 noon	WLIB	The Ed Williams Show
2:00 p.m.	WBAI	Jazz with A.B. Spellman
4:00 p.m.	WLIB	The Billy Taylor Show
	WRVR	Jazz with Father O'Connor
6:00 p.m.	WRVR	More Jazz with Max Cole
7:00 p.m.	WRVR	Father O'Connor's Jazz Anthology
	WDHA	Dick Neeld
7:30 p.m.	WLIB	The Del Shields Show
8:00 p.m.	WRVR	Just Jazz with Ed Beach
	WBAB	The Grooveyard with Bob Washington
9:00 p.m.	WABC	The Other Dan Ingram Show
	WABC	Sound of the Big Bands
	WFUV	Jazz Horizons
	WSOU	Modern Touch
10:00 p.m.	WFUV	Jazz Horizons
11:00 p.m.	WPRB	Jazz After Hours
	WRFM	Casper Citron
	WEVD	Symphony Sid Show
12:00 a.m.	WTFM	Jazz in Stereo with Rhett Evers
12:15 a.m.	WALK	Jazz at Midnight with Bob Klein

Sunday

4:00 p.m.	WLIB	The Billy Taylor Show
7:30 p.m.	WLIB	The Del Shields Show
8:00 p.m.	WBAB	The Grooveyard with Bob Washington
10:00 p.m.	WKCR	Jazz Til One
11:00 p.m.	WBAI	Scope of Jazz
12:00 p.m.	WPRB	Master of Jazz
	WEVD	Symphony Sid Show

DRAMA & POETRY

Monday thru Friday

11:00 p.m.	WNYC	Spoken Words
3:30 p.m.	WSOU	Children's Carousel
8:00 p.m.	WFME	Unshackled
9:35 p.m.	WVHC	Bookmark
11:00 p.m.	WNYC	Spoken Words (repeat)

Tuesday

9:30 p.m.	WVHC	Shakespeare
10:00 p.m.	WFUV	Words Without Songs

Wednesday

8:00 p.m.	WRVR	Drama
8:05 p.m.	WCWP	Radio Drama

Thursday

5:00 p.m.	WBAI	Bentley on Brecht
8:30 p.m.	WKCR	Literary Workshop
9:30 p.m.	WVHC	Shakespeare
11:00 p.m.	WBAI	Bentley on Brecht

Saturday

3:00 p.m.	WSOU	Seton Spectacular
5:00 p.m.	WNYC	French Drama Series
8:00 p.m.	WFME	Unshackled
9:00 p.m.	WNYC	International Theatre
11:00 p.m.	WNYC	Spoken Words

Sunday

6:45 a.m.	WRLB	Ave Maria Hour
8:00 p.m.	WFME	Unshackled
9:00 p.m.	WNYC	International Theatre
10:00 p.m.	WFUV	Short Masterpieces of French Literature
11:00 p.m.	WNYC	Spoken Words

SATURDAY JULY 13

STEREO AS INDICATED*

2:00 **★** DABBLE IN POP
POP, FOLK-ROCK, FOLK
3:30 **★** CURTAIN TIME SHOW
MUSIC

12:00 THE CAMPUS CARAVAN PETE FORNATALE
2:00 "SEGUE" OZZIE ALFONSO
3:00 WHILE BYRNE ROAMS MUSIC, NEWS

ALL STEREO

8:00 SIGN ON
8:15 STEREO SHOWCASE
8:45 WORLD IN SONG
9:45 CROSSROADS JEFFREY ST. JOHN
10:05 ON STAGE "HELLO, DOLLY" PEARL BAILEY
11:05 STEREO SHOWCASE
12 NOON
2:05 **POP CONCERT** STRAUSS:
ON THE BEAUTIFUL BLUE DANUBE; WINE WOMEN & SONG; ARTIST'S LIFE; TILL EULENSPIEGEL; DANCE OF THE SEVEN VEILS
3:05 STEREO SHOWCASE
5:05 COCKTAILS FOR TWO

STEREO AS INDICATED*

6:00 **SUNRISE SYMPHONY** BEETHOVEN: EGMONT OVT (WALTER); MOZART: A MUSICAL JOKE (REINER); ELGAR/LECOQC: MADEMOISELLE AGNOT STE (KURTZ); POMP & CIRCUMSTANCES MARCH NO. 4 (BLISS)
8:00 STORY TELLING DIANE WOLKSTEIN
9:00 **★** MASTERWORK HOUR J.S. BACH: CANTATA NO. 119 (WERNER); J.C. BACH: SINF CONC IN C (JONES); C.P.E. BACH: HARPSCHD CONC IN D (HALCOLM/MENUHIN); W.F. BACH: SYM IN D (RISTENPART)
11:30 YOUNG AMERICAN PLAYS
12 NOON
12:00 FRENCH MUSIC SERIES
1:00 MUSIC FROM THE CAMPUS
2:00 WORLD FESTIVAL OF MUSIC

ALL STEREO

(WHEN SCHEDULED N.Y. METS BASEBALL WILL PREEMPT REGULAR PROGRAMMING)
9:00 THE NOW MUSIC POPULAR MUSIC OF TODAY
12 NOON
AND RECENT YESTERDAYS

6pm	WKCR 89.9	WFUV 90.7	WLIR 92.7	WNYC 93.9	WABC 95.5
6:00 WORLD REPORT 6:30 ★ MISCELLANY MUSIC, TALK AND PLEASANT SURPRISES 8:00 INSIGHT 9 PM 9:00 ★ SATURDAY NIGHT AT THE OPERA 1:00 ★ THE END LATE HOUR MUSIC AND BANTER	6:00 ★ EVENING CONCERT TCHAIKOVSKY: SWAN LAKE (PHILADELPHIA ORCH/ORMANDY) 7:00 NEWS, SPORTS 7:15 ELECTION '68 7:30 WORDS AND MUSIC LAUREN IRWIN 8:00 ★ CLASSICS OF AMERICAN COMPOSERS FRANK A. SEITZ SCHOENBERG: 3 PIANO PIECES; 5 PIANO PIECES; STE FOR PIANO; PIANO PIECES (GOULD) 9 PM 9:00 "WITH NETS OF WONDER" POETRY, PROSE & MUSIC BILL CROWLEY 10:00 JAZZ HORIZONS JONATHAN BYRNE 11:00 ANTIC NOTES OZZIE ALFONSO & PHILIP MCHUGH	6:05 DINNER FOR TWO PLAY WITHOUT WORDS "DO RE MI" LAWS 9 PM 9:05 ★ IMAGES FOR ORCHESTRA SIBELIUS: PONJOLA'S DAUGHTER (NY PHIL/BERNSTEIN); BARTOK: CONC FOR ORCH (PHILADELPHIA ORCH/ORMANDY); SMETANA: 3 DANCES FROM "BARTERED BRIDE" (CLEVELAND ORCH/SZELL); LALO: SYM ESPAGNOLE (NY PHIL/MITROPOULOS) 11:05 DANCE PARTY 1:00 SIGN OFF NEWS ON THE HOUR	6:00 HANDS ACROSS THE SEA HERMAN NEUMANN 7:00 ★ MASTERWORK HOUR COUPERIN: BALLETT, MUSIC (BIRBAUM); POULENC: CON CHAMPETRE FOR HARPSICHORD & ORCH (DE WIELE/PRETRE); BERLIOZ: GRANDE SYM FUNEBRE ET TRIOMPHE (DONDEYNE); MARCH HONGROISE (ANSERMET) 9 PM 9:00 INTERNATIONAL THEATRE TARTUFFE 11:00 SPOKEN WORDS 12:00 WHILE THE CITY SLEEPS MOZART: DON GIOVANNI (GIULINI)	6:00 THE NOW MUSIC WITH EMPHASIS ON THE CURRENT SOUND 9 PM IN THE MAINSTREAM OF NON-HARD ROCK 12:00 SIGN OFF NEWS FIVE MINUTES BEFORE THE HOUR	

SELECTIONS

From stations not in daily Folio-Dial

10:00 WAWZ 99.1 MORNING CONCERT MAHLER: SYM NO. 1
12 NOON
2:00 WAWZ 99.1 AFTERNOON CONCERT RESPIGHI: THE PINES OF ROME
9 PM
9:00 WHLI 98.3 CONCERT AT NDWE MOZART: SON FOR ORGAN AND ORCH NO. 17 K. 336 (BIGGS/ROZSNYAI); TWO PIANO SON IN D K. 448 (ASHKENAZY, FRAGER); SYM NO. 35 K. 385 (CLEVELAND ORCH/SZELL)

ALL STEREO

6:00 PIX PENTHOUSE WITH TOM MERCEIN
12 NOON
12:00 PIX PENTHOUSE WITH JOHN NATHAN
4:00 ART FORD'S MANHATTAN
5:00 PIX PENTHOUSE WITH JOHN NATHAN

ALL STEREO

6:00 DICK SUMMER SHOW
10:00 JONATHAN SCHWARTZ WITH
12 NOON
WITH WEEKEND SOUNDS
2:00 SCOTT MUNI PLAYS

ALL STEREO

6:05 STEREO SPECTACULAR WITH GENE FALLON NEWS, TIME, WEATHER, COMEDY, MUSIC
10:05 STEREO
12 NOON
SPECTACULAR WITH GENE

ALL STEREO

6:00 MORNING STEREO
6:45 VOICE OF UNITY INSPIRATION TO BEGIN ANOTHER DAY
7:00 NEWS
7:05 STEREO
12 NOON
REFLECTIONS MUSIC, NEWS, WEATHER

ALL STEREO

6:57 SIGN ON
7:00 AGRICULTURAL REPORT
7:10 SATURDAY MORNING MOOD
9:30 SPECTRUM USA
10:05 MUSIC DEN
12 NOON
12:00 SOMETHING SATURDAY JIM SILLENCE WITH MUSIC
2:05 BEST OF BROADWAY BILL BARNEY
4:05 GRASS ROOTS OF FOLK HAL BARNEY WITH FOLK AND COUNTRY WESTERN

WVJ 100.3	WPIX 101.9	WNEW 102.7	WTFM 103.5	WRFM 105.1	WDHA 105.5
LIGHT MUSIC 9 PM 9:05 CURTAIN TIME IRMA LA DOUCE 12:05 SIGN OFF NEWS ON THE HOUR	6:00 PIX PENTHOUSE WITH BOB WESTON 9 PM 12:00 MANHATTAN AFTER HOURS WITH KEN LAMB NEWS ON THE 58 MINUTE MARK	THE BEST OF THE NEW CROP OF HITS 7:00 ROSKO TILL MIDNIGHT 9 PM IN STEREO 12:00 NELL BASSETT TILL 6 A.M.	FALLON AND CHARLES DUVAL 8:05 STEREO 9 PM SPECTACULAR LIGHT MUSIC 12:05 JAZZ IN STEREO WITH TED RADO TILL 6:00 A.M. NEWS ON THE HOUR	6:00 NEWS 6:05 WASHINGTON CLOSEUP 6:10 EVENING IN STEREO 9 PM MUSIC, NEWS, ON THE HOUR 12:00 STEREO FOR NIGHT PEOPLE TILL 7:15 A.M. NEWS ON THE HOUR	6:00 CANDLELIGHT SERENADE 7:05 THE JAZZ CORNER DICK NEEDL WITH JAZZ 8:05 THE AMERICAN MUSICAL SCENE 9 PM THE AMERICAN SCENE CONTO CALL 201-366-3424 12:05 MIDNIGHT WITH RONNIE MUSIC 1:05 SIGN OFF

YOUR FM DIAL. See above or pages FM 73-78 for programming details. ★ Indicates some/all stereo.

WCWP 88.1	WBGO 88.3	WVHC 88.7	WSOU 89.5	WKCR 89.9	WFUV 90.7	WFMU 91.1	WNYE 91.5	WHOM 92.3	WLIR 92.7	WPAT 93.1	WVOX 93.5	WNYC 93.9	WJLK 94.3	WGSM 94.3	WFME 94.7	WABC 95.5	WQXR 96.3	WSTC 96.7	WNBC 97.1	WALK 97.5	WEVO 97.9	WHLI 98.3	WLAD 98.3	WCTC 98.3
-----------	-----------	-----------	-----------	-----------	-----------	-----------	-----------	-----------	-----------	-----------	-----------	-----------	-----------	-----------	-----------	-----------	-----------	-----------	-----------	-----------	-----------	-----------	-----------	-----------

SATURDAY JULY 13

STEREO AS INDICATED*

6:00 **BREAKFAST SYMPHONY** SCHUBERT: SYM NO. 8 IN B- (28/VIENNA PHIL ORCH/KERTESZ); BOCCHERINI: CELLO CONC IN B^b (21/SADLO/PRAGUE RADIO SYM/KLIMA); BERLIOZ: ROMAN CARNIVAL OVT (9/PHIL PROM ORCH/BOULT); MINKUS: LA BAYADERE: GRAND PAS DE DEUX ACT IV (12/LON SYM ORCH/BONYNGE); DELIUS: FLORIDA STE: BY THE RIVER (7/ROYAL PHIL/BEECHAM); STRAVINSKY: FIREBIRD: INFERNAL DANCE OF KING KASTCHEI (4/NAT'L SYM ORCH/MITCHELL)

8:00 **NEW YORK TIMES NEWS ROUNDUP/BUSINESS PICTURE TODAY**

8:25 **BREAKFAST SYMPHONY** BOYCE: OVT TO THE NEW YEAR ODE, 1758 (LAMOREUX ORCH/LEWIS); MENDELSSOHN: A MIDSUMMER NIGHT'S DREAM: SCHERZO (5/CONCERTGEBOUW ORCH OF AMSTERDAM/SZELL); CHADWICK: SINF IN D (22/AMERICAN ARTS ORCH/KRUEGER)

9:07 **PIANO PERSONALITIES** PETER FRANKL

10:07 **LISTENERS' CHOICE** 12 NOON

12:10 **MUSIC A LA CARTE**

1:07 **MIDDAY SYMPHONY** JEJANOVSKY: OFFERTUR AD DUOS CHORUS IN A (PRAGUE WIND ENS & SYM/SEK); BOYCE: OVT TO THE NEW YEAR'S ODE, 1772 (8/LAMOREUX ORCH/LEWIS); DELIUS: PIANO CONC IN C- (22/MITCHELL/ N.D.R. SYM ORCH/STRICKLAND); RAVEL: LA VALSE (13/L'ORCH DE LA SUISE ROMANDE/ANSERMET)

2:07 **THE OPERA HOUSE** VERDI: I VESPRE SICILIANI (TAGLIABUE/ORTICA/ CHRISTOFF/CERQUETTI/ZORNIOTTI/ FERREIN/CHR & ORCH OF RAI, TURIN/ROSSI)

5:07 **STEREO CAVALCADE** MON SUPPE: PIQUE DAME: OVT (7/VIENNA PHIL/ SOLT); GROFE: GRANDE CANYON STE: SUNSET (5/ORCH/COULD); RIISAGER: ETUDE: BALLET STE (11/ROYAL DANISH ORCH/SEMKOV)

STEREO AS INDICATED*

6:00 **BIG WILSON** NEWS, DISCUSSION, MUSIC

10:05 **FITTLE SYMPHONY** ROSETTI: SYM IN C (INTERN'L SOLOISTS ORCH/BARTELLO); HAYDN: SYM NO. 87 IN A (SUISE ROMANDE ORCH/ANSERMET)

11:05 **CONCERTO** MOZART: CONC NO. 14 IN E^b FOR PIANO & ORCH (BRENDL/1 SOLISTI DI ZAGREB/JANIGRO); TELEMANN: STE IN A- FOR FLUTE & ST (BAKER)

12 NOON

12:05 **MESSAY FOR ORCHESTRA** RAVEL: DAPHNIS ET CHLOE: STE NO. 2 (CHICAGO SYM/MARTINON); MILHAUD: STE PROVENCAL (BOSTON SYM ORCH/MUNCH); DEBUSSY: PREIMPS: SYM STE (SUISE ROMANDE ORCH/ANSERMET)

1:05 **MONITOR NEW YORK**

3:05 **OPERA-BALLET THEATRE** SMETANA: THE BARTERED BRIDE: EXC ACT I (CORDES/FRICK/BAMBERG SYM/KEMPE)

4:05 **SOUND OF SYMPHONY** HAYDN: SYM NO. 39 IN G- (ESTERHAZY ORCH/BLUM); MOZART: DIV IN F (ENGLISH CHAMB ORCH/DAVIS)

5:05 **RECITAL HALL** TORELLI: SINF WITH OBOES, TRUMPETS & VLNS (SOLOISTS/1 SOLISTI DI ZAGREB/JANIGRO); SALIERI: CONC IN C FOR FLUTE, OBOE & ORCH (LARDROT); JACCHINI/GABRIELLI: SONA FOR 2 TRUMPETS (WOBISCH & HOLLER); BOOCHERINI: QT IN D- FOR OBOE & STS (LARDROT)

8:00 **MUSIC BY MAX REGER** VARIA & FUGUE IN E ON A THEME OF MILLER (HAMBURG PHIL ORCH/KEILBERTH); PRELUDE & FUGUE FOR PIANO, LEFT HAND (WITTGENSTEIN); CONCERTO FOR PIANO & ORCH IN F- (SERKIN/PHILADELPHIA ORCH/ORMANDY)

9:30 **YOUNG PEOPLE'S PROGRAM**

10:30 **WAR SUMMARY** PAUL SCHAEFFER

10:45 **MISCELLANY**

11:00 **SPECIAL REPORT**

11:30 **COUNTRY MUSIC** 12 NOON

12:00 **RADIO HAPPENING #2**

1:00 **RAY BOLGER** DISCUSSES HIS CAREER

1:30 **MY CAPTIVITY AMONG THE SIOUX #18**

2:00 **TWO HOURS OF JAZZ**

4:00 **"OF LOVE AND DUST"** ERNEST GAINES

5:00 **TWENTIETH-CENTURY AMERICAN MUSIC** WORKS BY ERB/BUBALO/NEULIN/DICK/NUNLIST/YOUNG

WQXR 96.3

WNBC 97.1

WBAI 99.5

6:00 **NEW YORK TIMES NEWS ROUNDUP** EDITORIAL

7:07 **CHAMBER MUSIC HALL** BEETHOVEN: QT NO. 16 IN F (24/JUILLIARD ST QT); CORIGLIANO: VLN & PIANO SONA (22/CORIGLIANO/VOTAPEK)

8:07 **SATURDAY SYMPHONY** MOZART: DIV IN F (9/11 MUSICI CHAMB ORCH); SCHUBERT: SYM NO. 4 IN C- (33/ORCH OF NAPLES/VAUGHAN); WOFF: CARMINA BURANA (61/WOLANSKY/NOBLE/LOPP/UNGER/NEW PHILH CHR & ORCH/DE BURGOS) 9 PM

10:07 **LISTENING BOOTH**

11:00 **NEW YORK TIMES NEWS ROUNDUP**

11:21 **NIGHTCAP** MENDELSSOHN: SYM NO. 10 IN B- (7/CHAMB ORCH/MARRINER); LOVENSJOLD: LA SYLPHIDE: PAS DE DEUX (8/LON SYM ORCH/BONYNGE); DVORAK: SCHERZO CAPRICIOSO (12/LON SYM ORCH/KERTESZ)

12:07 **MIDNIGHT WITH MUSIC** VIVALDI: L'ESTRO ARMONICO, OP. 3 (12/DAVID & IGOR OISTRAKH/ROYAL PHIL ORCH); BRAHMS: QT NO. 3 IN C- FOR PIANO & STS (37/SILVERSTEIN/FINE/ESKIN/FRANK); SCHUBERT: TRIO IN B^b, OP. 99 (38/ STERN/ROSE/ISTOMIN); W.F. BACH: SINF IN D- (10/PHILADELPHIA ORCH/ORMANDY)

NEWS ON THE HOUR

6:00 **MONITOR NEW YORK** BILL MAZER

7:30 **NETWORK MONITOR**

8:05 **RENEADE** BEETHOVEN: PATHETIQUE SONA: ADA (PENNARIO/HOLLYWOOD BOWL SYM/ROZSA); TCHAIKOVSKY: SWAN LAKE: EXC (PHILADELPHIA ORCH/ORMANDY); RACHMANINOFF: VOCALISE, OP. 34 (CAPITOL SYM ORCH/Dragon); BEETHOVEN: SONA NO. 9 IN E (RICHTER); PUCCINI: MADAME BUTTERFLY: ACT 1 (KOSTELANETZ & ORCH); BRAHMS: LULLABY, OP. 49 (CAPITOL SYM ORCH/Dragon) 9 PM

9:05 **MUSICAL FOOTNOTES** MOZART: SERE NO. 10 IN B^b FOR 13 WIND INSTRUMENTS (LON WIND 2T & ENS/ KLEMPERER)

10:05 **CONCERTO** STAMITZ: SYM IN A (MUNICH CHAMB ORCH/STADLMAIR); RACHMANINOFF: CONC NO. 3 IN D- FOR PIANO & ORCH (BOSTON SYM ORCH/MUNCH); DVORAK: SYM NO. 2 IN D- (LON SYM ORCH/MONTEUX); GLAZANOVY: AUTUMN: THE SEASONS (CAPITOL SYM ORCH/Dragon)

NEWS ON THE HOUR

6:15 **MISCELLANY**

6:30 **NEWS**

6:45 **GENESIS OF A NATION** RESPONSIBLE GOVERNMENT AND THE MOB

7:15 **NEWS FOR CAR OWNERS**

7:45 **REVIEW OF THE SOVIET PRESS**

8:00 **CRISIS IN THE CITY** THE POLITICS OF URBAN EDUCATION 9 PM

9:00 **THE NEW HUMANISM** SCIENCE

9:45 **LONDON SCHOOL OF CONTEMPORARY DANCE**

10:30 **LA SALLE STRING QUARTET** CONCERT GIVEN AT TOWN HALL ON FEBRUARY 5, 1956

12:00 **THE OUTSIDE**

8:45 **SIGN ON**

8:50 **HARRY EMERSON FOSDICK** PRAYER

9:00 **CHILDREN'S WORLD** CANADA; VISIT TO A FARM; WEATHERMAN CHARLES KNUDSEN; THE STORY OF THE STATUE OF LIBERTY; PENGUINS; AND "PETER PAN."

11:00 **ONCE UPON A TIME** TODAY NANCY JOURNEYS THROUGH THE MUSIC AND STORY WORLD OF THE MOON AND THE STARS AND DISCOVERS HOW PEOPLE USED TO EXPLAIN "REASONS WHY" WITH AN INDIAN TALE ABOUT THE MOON'S BEHAVIOR AND ITS BRITISH EQUIVALENT. NANCY ALSO PRESENTS THE COMPLETE VERSION OF THE THREE BLIND MICE, WANDA GAG'S "MILLIONS OF CATS", JAMES THURBER'S "MANY MOONS", AND "THE OWL AND PUSSYCAT", BY EDWARD LEAR. PETER USTINOV NARRATES THE STORY OF "THE LITTLE TAILOR", WITH MUSICAL BACKGROUND BY TIBER HARSANYI, AND ED BLEGLEY RECREATES TOM SAWYER'S ADVENTURES WHILE RUNNING AWAY FROM HOME AND ATTENDING HIS OWN FUNERAL

12 NOON

1:00 **BBC SCIENCE MAGAZINE** NEWS & COMMENTS FROM THE WORLD OF SCIENCE

1:30 **BLUEGRASS UNLIMITED** WITH RICHARD SPOTTSWOOD

2:00 **OSBORG'S CHOICE** BACH: ART OF THE FUGUE: SECTION I; MAYR: LAUDATE PUERI DOMINUM; BOYCE: SYM NOS: 4, 5 & 8; HASSE: CONC FOR FLUTE & STS IN C; VIVALDI: CONC FOR FLAUTINO IN C; MALDERE: SINF FOR VARIOUS INSTRUS; COUPERIN: FANTASIES OBOES; STE FOR HARPSCHD; FANTASIA FOR VIOLS

4:00 **JAZZ WITH FATHER NORMAN** J. O'CONNOR, C.S.P.

ALL STEREO

6:00 **SIGN ON**

6:05 **START THE DAY IN STEREO**

7:30 **SPORTS**

8:35 **MID-MORNING SERE-NADE** LIGHT MUSIC

9:10 **A SOPHISTICATED VIEW OF THE SPORTS** WITH JACK RAFTER

11:57 **MARKETS**

12 NOON

12:00 **SOUND OF STEREO**

1:00 **LIGHT AND LIVELY**

5:30 **OVERTURE**

WRVR 106.7

WRLB 107.1

6pm

6:00 **MORE JAZZ** WITH MAX COLE

7:00 **FATHER O'CONNOR'S JAZZ ANTHOLOGY**

8:00 **JUST JAZZ WITH ED BEACH** TROMBONIST BILL HARRIS

9 PM

12:00 **SIGN OFF**

6:00 **OVERTURE** CONT'D

6:30 **WALL STREET**

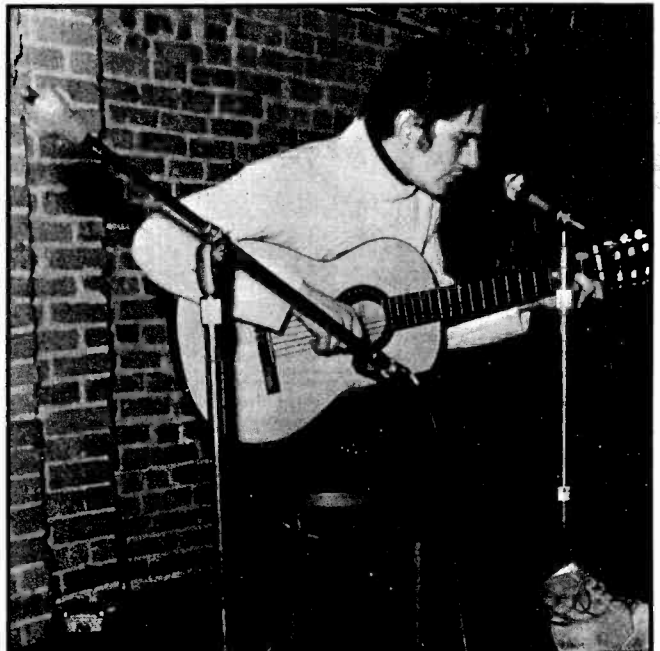
6:35 **OVERTURE** CONT'D

8:00 **INTERLUDE** 9 PM

JAZZ AND POP

11:00 **FINALE**

NEWS ON THE HOUR



KENNY RANKIN, SUCCESSFUL AND IMAGINATIVE SONGWRITER, IS ALSO A SENSITIVE PERFORMER AND MUSICIAN. "COTTEN CANDY SANDMAN" AND "THE DOLPHIN", TWO OF HIS ORIGINAL SONGS, ARE HEARD FREQUENTLY ON THE "CURRENT SOUND" STATIONS (WNEW, WABC ET AL). THEY ARE ALSO INCLUDED, IN HIS ARTISTIC AND MUSICALLY PLEASING ALBUM, "MIND DUSTER."

MONDAY JULY 15

STEREO AS INDICATED*

2:00 **WABBLING** POP, FOLK, AND ANYTHING GOES!
 3:30 **THE PRIMROSE PATH** CONTINUED WABBLING IN POP AND FOLK
 5:00 **TWILIGHT CONCERT** MOZART: 22 CANONS; 17 FEST SON FOR ORGAN AND ORCH

4:00 **MUSICALE** LIGHT MUSIC
 5:00 **THE SACRED HEART PROGRAM**
 5:15 **THIS WEEK AT THE U.N.** DOCUMENTARY
 5:30 **EVENING REPORT** NEWS, SPORTS

ALL STEREO

6:30 **SIGN ON**
 6:45 **TOP O' THE MORNING**
 7:55 **CONGRESSMAN GROVER SPEAKS**
 8:45 **VIEWPOINT**
 10:05 **ON STAGE** "BAKER STREET"
 11:05 **BUNNY'S CORNER** 12 NOON
 12:05 **BUNNY'S CORNER**
 12:30 **LUNCH WITH DORE REED**
 1:30 **STEREO SHOWCASE**
 2:05 **POP CONCERT** SMETANA: BARTERED BRIDE; WEBER: OSERON; ROSSINI: BARBER OF SEVILLE (WINGRAD); RAVEL: RAPSDIE ES-PAGNOLE (BERNSTEIN)
 3:05 **STEREO SHOWCASE**
 5:05 **COCKTAILS FOR TWO**

STEREO AS INDICATED*

6:00 **SUNRISE SYMPHONY** BACH: BRANDENBURG CONC NO. 2 (PROHASKA); HAYDN: SYM NO. 57 IN D (GOLDBERG); KHACHATURIAN: GAYNE: 3 EXC (WELDON)
 7:00 **AROUND NEW YORK** ANDRE BERNARD
 8:45 **CONSUMER REPORT/NUTRITION**
 9:00 **MASTERWORK HOUR** ESPAL: DON QUIXOTE VELANDO LAS (BURGOS); ARRIAGA: SYM IN D (ARAMBARRI); DE FALLA: NIGHTS IN THE GARDEN OF SPAIN (ENTREMONT/ORMANDY); ALBENIZ: FETE DIEU A SEVILLE (REINER)
 10:30 **YOU AND YOUR HEALTH**
 11:00 **SPOKEN WORDS** 12 NOON
 12:00 **MUNICIPAL SYMPHONY** DYORAK: CARNIVAL OVT (SOMOGYI); SYM NO. 5 IN D (ANCERL)
 1:00 **FAMOUS ARTISTS** JOSEPH PAYNE
 2:00 **CHAMBER ENSEMBLE** BACH/STRAVINSKY: CHORAL VARIA ON "VON HIMMEL HOCH" (ABRAVANEL); STAMITZ: BASSOON CONC IN F (ZUCKERMAN); MOZART: SERE NO. 7 IN D (LEITNER)
 4:00 **FOOD FOR THOUGHT/RUSSIAN ART & CULTURE**
 4:30 **LABOR PRESS CONFERENCE**

ALL STEREO

(WHEN SCHEDULED N.Y. METS BASEBALL WILL PREEMPT REGULAR PROGRAMMING)
 9:00 **THE NOW** MUSIC POPULAR MUSIC OF TODAY
 12 NOON
 AND RECENT YESTERDAYS

6pm	WKCR 89.9	WFUV 90.7	WLIR 92.7	WNYC 93.9	WABC 95.5
5:00 TWILIGHT CONCERT CONTD 7:00 FROM THE COLUMBIA CLASSROOM 8:00 WORLD REPORT 8:30 U.N. REVIEW 9 PM 9:00 JUST THE BEGINNING FOLK AND BLUES WITH DONNY LINDER 10:00 KING'S CROWN CONCERT MUSIC WITH STEVEN SLIBERBLATT 1:00 BANANA BAG MUSIC AND BANTER SUITABLE FOR THE LATE HOUR	5:00 EVENING CONCERT BEETHOVEN: CREATURES OF PROMETHEUS (HAGUE PHILH/VAN OTTERLOO); BACH: PIANO CONC NO. 5 (BACHAUES/LON ORCH/SHERMAN) 7:15 THE URBAN LEAGUE 7:30 BLUES NOCTURNE MUSIC TINGED WITH THE BLUES OF EVENING BILL KERRIGAN 8:30 BERNARD GABRIEL: THE MUSIC SCENE "TRENDS IN THE AVANT GARDE" 9 PM 9:00 THE FOLK SPECTRUM JACK FRANCHETTI 10:00 MUSIC FROM STAGE & SCREEN TONY KELSEY 11:00 RADIO ITALIANA CONCERT HAYDN: MASS IN D (SCARLATTI ORCH/BIULINI); HINDEMITH: MARIENLEBEN LIEDER (RILKE/MILAN ORCH/RIEGER)	6:05 DINNER FOR TWO 7:00 FINANCIAL REPORT 7:05 DINNER FOR TWO 9 PM 9:05 IMAGES OF ORCHESTRA BORODIN: POLOVTSKY MARCH (SVETLANOV/ USSR SYM ORCH); STRAVINSKY: CAPRICCIO FOR PIANO & ORCH (ENTREMONT/STRAVINSKY/COLUMBIA SYM); BACH: VLN CONC IN E (SZERYNG/COLL MUSICUM/WINTERTHUR); MENDELSSOHN: TRIO IN D (ISTOMIN/STERN/ROSE TRIO); HAYDN: SYM NO. 63 IN C (RUDOLF/VIENNA RADIO ORCH) 11:05 EVENING PERFORMANCE PORGY & BESS 12:05 STARDUST WALTER JOSEPHS 3:00 SIGN OFF NEWS ON THE HOUR	6:00 ITALIAN PRESS REVIEW 6:15 NETHERLAND PRESS 6:30 AUSTRALIAN PRESS 7:00 MASTERWORK HOUR WAGNER: LOHENGRIN: PRELUDE TO ACT I (WALTER); MAHLER: SYM NO. 8 (ABRAVANEL) 8:30 ASPECTS OF MUSIC 9 PM 10:00 SEMINARS IN THEATRE RICHARD PYATT 11:00 SPOKEN WORDS 1:00 WHILE THE CITY SLEEPS FOURNIER-BADURA SKODA-JANIGRO TRIO	6:00 THE NOW MUSIC WITH EMPHASIS ON THE CURRENT SOUND 9 PM IN THE MAINSTREAM OF NON-HARD ROCK 12:00 SIGN OFF NEWS FIVE MINUTES BEFORE THE HOUR	

SELECTIONS

From stations not in daily Folio-Dial

10:00 **WAWZ 99.1** MORNING CONCERT STRAVINSKY: VLN CONC IN D 12 NOON
 2:00 **WAWZ 99.1** AFTERNOON CONCERT BRAHMS: SYM NO. 3 6 PM
 6:30 **WEVO 97.9** MUSIC HIGHLIGHTS SIBELIUS: SYM NO. 2 (LONDON SYM/MONTEUX); BEETHOVEN: PIANO CONC NO. 3 (ITURBI/RCA VICTOR SYM/ITURBI) 9 PM
 9:00 **WHLI 98.3** CONCERT AT NINE BLISS: WELCOME TO THE QUEEN (LONDON SYM/BLISS); INTRO AND ALLEGRO (LONDON SYM/BLISS); VLN CONC (FRANCESCATTI/PHILADELPHIA ORCH/ORMANDY)

ALL STEREO

6:00 **PIX PENTHOUSE** WITH TOM MERCEIN
 10:00 **PIX PENTHOUSE** WITH AL D'AMICO 12 NOON
 12:00 **PIX PENTHOUSE** WITH TOM MERCEIN
 2:00 **PIX PENTHOUSE** WITH AL D'AMICO
 4:00 **ART FORD'S MANHATTAN**
 5:00 **PIX PENTHOUSE** WITH BOB WESTON

7:30 **PARADE** LIGHT MUSIC
 9:30 **GEMS** 12 NOON
 LIGHT MUSIC
 4:05 **MUSIC FOR METROPOLITANS**

ALL STEREO

6:00 **DICK SUMMER SHOW**
 10:00 **JONATHAN SCHWARTZ** WITH DOUGLAS JEFFERS 12 NOON
 THE BEST IN NOW MUSIC
 2:00 **SCOTT MUNI** IS BACK WITH THE NEW SCENE

ALL STEREO

6:05 **INFORMATION** NEWS, MUSIC, TIME, TRAFFIC, WEATHER, COMEDY WITH DOUGLAS JEFFERS
 10:05 **PANORAMA** 12 NOON
 1:05 **MATINEE IN STEREO** WITH DOUGLAS JEFFERS
 4:05 **CAFE CONTINENTAL** WITH CHARLES DUVAL

ALL STEREO

6:00 **SUNRISE STEREO**
 6:45 **VOICE OF UNITY** INSPIRATION TO BEGIN ANOTHER DAY
 7:00 **STEREO REFLECTIONS** 12 NOON
 12:05 **STEREO REFLECTIONS** CONTINUED
 4:00 **WALL STREET FINAL**
 4:05 **STEREO REFLECTIONS** CONTINUED

ALL STEREO

6:57 **SIGN ON**
 7:00 **MORNING SHOW** RAY MURRAY
 MUSIC, TALK, WEATHER, NEWS, TRAFFIC
 9:00 **MORNING MOOD** LIGHT MUSIC 12 NOON
 12:00 **NOON NEWS ROUNDUP**
 12:20 **MIDDAY MUSICALE**
 2:05 **ALBUMS IN STEREO**
 4:05 **WIDE WORLD OF MUSIC** BOB LINDER
 5:05 **STOCK MARKET REPORT** BLAIR & CO
 5:55 **COMMUNITY EVENTS** PHIL GRASSIA

WVNY 100.3	WPIX 101.9	WNEW 102.7	WTFM 103.5	WRFM 105.1	WDHA 105.5
LIGHT MUSIC 9 PM 9:05 CURTAIN TIME WEST SIDE STORY 12:05 SIGN OFF NEWS ON THE HOUR	6:00 PIX PENTHOUSE WITH BOB WESTON 8:00 PIX PENTHOUSE WITH STAN MARTIN 12:00 MANHATTAN AFTER HOURS WITH KEN LAMB NEWS ON THE HOUR 58 MIKUT MARE	7:00 ROSKO OUR MAN TILL 9 PM MIDNIGHT 12:00 ALISON STEELE TILL 6:00 A.M.	6:00 SIX O'CLOCK REPORT WITH FRED DARWIN 6:15 STEREO SPECTACULAR WITH BRYCE BOND 8:05 MUSIC OF AMERICA SHOWTIME USA 9 PM 9:05 STEREO SPECTACULAR WITH BRYCE BOND 12:05 JAZZ IN STEREO WITH TED RADD TILL 6:00 A.M. NEWS ON THE HOUR	6:00 WRFM NEWS FINAL NEWS, FINANCES, SPORTS WEATHER 6:15 STEREO REFLECTIONS CONTD 6:50 QUINCY HOWE COMMENTARY 7:05 ERWIN FRANKEL --AROUND THE WORLD 8:05 EVENING IN STEREO 9 PM MUSIC, NEWS, WEATHER 12:00 STEREO FOR NIGHT PEOPLE TILL 6:00 A.M. NEWS ON THE HOUR	6:00 SIX O'CLOCK REPORT 6:30 CANDLELIGHT SERENADE 7:00 STEREO AT SEVEN 8:05 MUSIC THAT ENDURES ELGAR: COCKAIGNE OVT (PHILH ORCH/KLEMPERER); MOZART: PIANO CONC NO. 20 IN D (HASKILL/VIENNA SYM/PAUMGARTNER) 9 PM 9:05 GOING BAROQUE HANDEL: STE FROM "SOLOMON" (NORTHERN SINF/BROTT); BACH: FRENCH STE NO. 2 (WALCHA); TELEMANN: STE IN C (MOSCOW CHAMB/BARSHA) 10:00 MUSIC FOR THE DANCE BIZET: SYM IN C (NYC BALLET ORCH/IRVING); BACH/WALTON: THE WISE VIRGINS (CONSORTS ARTS/IRVING); BRAHMS: HUNGARIAN DANCE NO. 5 (PHILADELPHIA ORCH/ORMANDY) 11:00 MUSIC 'TILL MIDNIGHT GASSMANN: QT NO. 3 IN E (CONCENTUS MUSICUS/WEIN); MOZART: SYM NO. 36 (BERLIN PHIL/BOHM); HAYDN: OIV NO. 113 IN D FOR BARYTON, VIOLA & CELLO (SALZBURGER BARYTON TRIO) 12:05 SIGN OFF

YOUR FM DIAL. See above or pages FM 73-78 for programming details. ★ Indicates some/all stereo.

WCWP 88.1	WBGO 88.3	WVHC 88.7	WSOU 89.5	WKCR 89.9	WFUV 90.7	WFMU 91.1	WNYE 91.5	WHOM 92.3	WLIR 92.7	WPAT 93.1	WVOX 93.5	WNYC 93.9	WJLK 94.3	WGSM 94.3	WFME 94.7	WABC 95.5	WQXR 96.3	WSTC 96.7	WNBC 97.1	WALK 97.5	WEVO 97.9	WHLI 98.3	WLAD 98.3	WCTC 98.3
-----------	-----------	-----------	-----------	-----------	-----------	-----------	-----------	-----------	-----------	-----------	-----------	-----------	-----------	-----------	-----------	-----------	-----------	-----------	-----------	-----------	-----------	-----------	-----------	-----------

STEREO AS INDICATED*

6:00 BRIGHT AND EARLY GEORGE EDWARDS WEATHER, NEWS, TIME, BUSINESS
 8:00 NEW YORK TIMES MORNING NEWS ROUNDUP
 9:07 PIANO PERSONALITIES ANIA DORFMANN
 10:07 LISTENERS' CHOICE

12 NOON

12:15 MUSIC A LA CARTE GEORGE EDWARDS
 1:07 **BE MY GUEST** BOB LEVIN IN HONOR OF BASTILLE DAY LITOLFF:
 ROBESPIERRE OVT(10/BOSTON PCPS/FIEDLER); LISZT: GRAND GALOP
 CHROMATIQUE(3/CZIFFRA); DONIZETTI: LUCIA DI LAMMERMOOR: EXC(6/
 NEW PHIL ORCH/DOWNS); MOPLAND: THE TENDER LAND: STE(21/BOSTON SYM/);
 CHARPENTIER: MARCHÉ DE TRIONFHE(4/CHAMB ORCH OF THE CONCERT PASDE-
 LOUP/MARTINI); RACHMANINOFF: PIANO CONC NO.2 IN C-(34/CLIBURN/
 CHICAGO SYM/REINER)
 3:07 **LISTENING TO MUSIC** LLOYD MOSS POST BASTILLE DAY CELEBRATION
 L'ISLE: LA MARSEILLAISE(11/DETROIT SYM/PARAY); RAVEL: INTRO & ALLEGRO
 FOR FLUTE, HARP, CLAR & ST QT(11/CHALLAN/CHAMB ENS); DEBUSSY: LA MER
 (23/BOSTON SYM/MUNCH); BIZET: PATRIE OVT(13/FRENCH NAT'L RADIO ORCH/
 MUNCH); ROUSSEL: SYM NO.3 IN G(26/NY PHIL/BERNSTEIN)
 5:07 **STEREO CAVALCADE** JFFENBACH: MONSIEUR ET MADAME DENIS: OVT(7/
 VIENNA OPERA ORCH/SCHFFEN); STRAUSS: LIEBESLIEDER WALTZ(7/VIENNA
 PHIL ORCH/BOSKOVSKY); TCHAIKOVSKY: PIANO CONC NO.3 IN E(14/SADOFF/
 NYC BALLET ORCH/IRVING)

STEREO AS INDICATED

6:00 BIG WILSON NEWS, MUSIC, TALK
 9:00 DR. JOYCE BROTHERS DISCUSSION
 10:00 STERLING YATES SWAP SHOW
 11:05 **PETITE SYMPHONY** BEETHOVEN: THE
 CREATURES OF PROMETHEUS BALLET(UTAH SYM
 ORCH/ABRAVANEL)

12 NOON

12:05 **CONCERTO** PAGANINI: CONC NO.5 IN A-
 FOR VLN & ORCH(GULLI/ANGELICUM CHAMB ORCH/
 ROSADA); TCHAIKOVSKY: CONC NO.3 IN E^b FOR
 PIANO & ORCH(GRAFFMAN/PHILADELPHIA ORCH/
 ORMANDY)
 1:05 **ESSAY FOR ORCHESTRA** BIZET: L'ARLESIENNE STE
 (SUISSE ROMANDE ORCH/ANSERMET); CARMEN: STE
 FOR ORCH
 2:05 **OPERA-BALLET THEATRE** PUCCINI: MADAME
 BUTTERFLY: EXC(PRICE/TUCKER/ELIAS/RCA ITALIAN
 OPERA ORCH & CHORUS/LEINSDORF)
 3:05 **SOUND OF SYMPHONY** NIELSEN: SYM NO.3
 (ROYAL DANISH ORCH/BERNSTEIN); TCHAIKOVSKY:
 MARCH SLAV(PHILADELPHIA ORCH/ORMANDY)
 4:05 **RECITAL HALL** FEATURING DAVIS DEPEYER
 WEBER: GRAND DUO CONC FOR CLARINET & PIANO
 (PREEDY); MOZART: QT IN A FOR CLARINET & ST
 (MELOS ENS); DEBUSSY: PETITE PIECE (PREEDY)
 5:05 BILL MAZER SHOW

7:00 IN THE BEGINNING LARRY JOSEPHSON
 9:00 STRING QUARTETS MOZART: QT NO.19
 IN C(JUILLIARD QT); NOVAK: QT IN G
 (NOVAK QT); BARTOK: QT NO.4(JUILLIARD
 QT)

10:15 A SATIRICAL VIEW
 10:30 COMMENTARY BISHOP JAMES PIKE
 10:45 COMMENTARY
 11:00 CONVERSATION JULIUS LESTER
 11:30 NEWS FOR CAR OWNERS

12 NOON

12:00 THE CRITICAL PEOPLE
 12:45 PUBLIC AFFAIRS SPECIAL
 1:45 BOOKS TO BUY, BORROW OR BURN
 2:00 FROM THE MIDWAY ECONOMICS
 3:00 SOUNDS OF TODAY
 4:00 YOUNG PEOPLE'S PROGRAM
 5:00 MUSIC FOR OBOE HAYDN: CONC IN
 C FOR OBOE & ORCH; MOZART: CONC
 IN C FOR OBOE & ORCH; QT IN F FOR
 OBOE & STS; QT IN E^b FOR PIANO,
 OBOE, CLAR, HORN & BASSOON

WQXR 96.3

WNBC 97.1

WBAI 99.5

6:00 NEW YORK TIMES NEWS ROUNDUP STOCK MARKET, EDITORIAL, BUSINESS
 7:15 NEW YORK TIMES CORRESPONDENTS VIEW THE NEWS
 7:20 NAME THE VOICE
 7:30 NIGHTS IN LATIN AMERICA PRU DEVON
 8:07 **SYMPHONY HALL** MOZART: VLN CONC NO.5 IN A(29/STERN/SYM ORCH/
 SZELL); SHOSTAKOVICH: THE AGE OF GOLD STE(17/LON SYM/MARTINON)

9:07 **MUSIC UNDER THE STARS** ALL TCHAIKOVSKY PROGRAM **CAPRICCIO**
 ITALIEN(16/SYM ORCH/KOMRASHIN); EUGENE ONEGIN: EXC(14/PHIL ORCH/
 SUSSKIND); **1812** OVT(16/NY PHIL/BERNSTEIN)
 10:07 **PANORAMA: MYTHS AND LEGENDS** BEETHOVEN: CREATURES OF PROMETHEUS:
 EXC(11/BOSTON SYM/MUNCH); LISZT: ORPHEUS(11/ROYAL PHIL/BEECHAM);
WAGNER: GOTTERDAMMERUNG: EXC(21/FARRELL/NY PHIL/BERNSTEIN)
 11:15 **NIGHTCAP** **VIVALDI**: GUITAR CONC IN D(10/YEPES/NAT'L ORCH OF
 SPAIN/ALONSO); **BACH**: SYM NO.2 IN E(10/AMSTERDAM CHAMB ORCH/RIEU);
 MAHLER: SYM NO.5 IN C-(10/PHIL ORCH/KLETZKI)
 12:07 **MIDNIGHT WITH MUSIC** BACH: SONA IN E- FOR VLN & CONTINUO(13/
 SHKOLNIKOVA/YEOLINA); BRAHMS: TRIC IN E^b FOR PIANO, VLN & HORN(30/
 SERKIN/BLOOM/TREE); ARNE: OVT NO.4 IN F(7/ENGLISH CHAMB/HURWITZ);
 KABALEVSKY: CELLO & PIANO: SONA IN B(28/VECTOMOV/PALENICEK);
 VAUGHAN-WILLIAMS: OBOE CONC(20/ROTHWELL/LON SYM/BARBIGOLLI)

6:00 BILL MAZER SHOW CONTO
 7:00 NEW YORK CITY NEWS WORLD, LOCAL, MARKET
 7:45 WORLD NEWS ROUNDUP
 8:05 **SERENADE** RAVEL: PAVANE POUR UNE INFANTE
 DEFUNTE(PHILADELPHIA ORCH/ORMANDY); BEETHOVEN:
 SONA NO.14 "MOONLIGHT"(SERKIN); CHOPIN: LES
 SYLPHIDES BALLET(PHILADELPHIA ORCH/ORMANDY)

9:05 **MUSICAL FOOTNOTES** IBERT: CONCT DA CAMERA
 FOR SAXOPHONE & ORCH(CHAMB ORCH/SHULMAN); VILLA-
 LOBOS: BACHIANAS BRASILEIRAS FOR FLUTE & BASSOON;
 GLAZOUNOV: CONC FOR SAXOPHONE & ORCH; MILHAUD:
 CONC D'ETE FOR VIOLA & SMALL ENS(LAMOUREUX ORCH/
 COMPOSER)
 10:05 **CONCERT** STAMITZ: ORCH TRIO IN A(CZECH
 PHIL ORCH/MUNCLINGER); SCHUMANN: CONC IN A-FOR
 CELLO & ORCH(STARKER/LON SYM/SKROWACZEWSKI);
 BEETHOVEN: SYM NO.9 IN D-(SUISSE ROMANDE/ANSERMET)

NEWS ON THE HOUR

6:15 MISCELLANY
 6:30 NEWS
 7:00 COMMENTARY CONRAD LYNN
 7:15 EDUCATION COMMENTARY JOHN MARSH
 7:30 SCRAP
 7:45 LETTERS FROM CONSTANTINOPLE #3
 8:15 GRASS ROOTS AMERICA #7
 8:45 BOTH SIDES OF THE BAR DISCUSSION
 9:15 PUBLIC AFFAIRS SPECIAL
 10:15 MISCELLANY
 10:30 NEWS PAUL FISCHER
 10:45 WAR SUMMARY PAUL SCHAFFER
 11:00 CESAR CHAVEZ SPEAKS
 12:00 RADIO UNNAMEABLE BOB FASS

NEWS ON THE HOUR

6:50 SIGN ON
 7:00 JUST JAZZ WITH ED BEACH EDDIE HARRIS ON TENOR, I
 9:00 JUST MUSIC WITH CONSTANCE COOPER BORODIN: PRINCE
 IGOR

12 NOON

12:00 **JUST MUSIC** FEATURING MUSIC OF BELLINI/DONIZETTI
 & ROSSINI ROSSINI: ARIAS FROM "SEMIRAMIDE" & "L'
 ITALIANA IN ALGERI"(HORME/ORCH ROYAL HOUSE, COVENT
 GARDEN/LEWIS); DONIZETTI: ARIA FROM "L'ELISIR D'AMORE"
 & "DON PASQUALE" & "LUCIA DI LAMMERMOOR"(FRENI/GEODA/
 ORCH OF ROME OPERA/MOLINARI-PRADELLI); OVT TO "ROBERTO
 DEVEREUX"(LON SYM/BONYNGE); ROSSINI: OVT TO "TORVALDOE
 OORLIKA"; L'OCCASIONE "A IL LADRO-FARCE IN I ACT
 (SOLOISTS OF TEATRO DELL'OPERA COMICA DI ROMA; CHORUS
 & ORCH OF SOCIETA DEL QUARTETTO, ROMA/MORELLI); BELLINI:
 "I PURITANI: EXC"(SUTHERLAND/FLAGELLO/DUVAL/CAPECCHI/
 CHORUS & ORCH MAGGIO MUSICALE FIORENTINO/BONYNGE);
 ARIA FROM "LA SONNAMBULE"; ROSSINI: "LA CENERENTOLA";
 EXC(DE FABRITTI); BELLINI: ARIAS FROM "NORMA"; "I
 PURITANI"; & "LA SONNAMBULE"(CHORUS ROYAL OPERA/CONVENT
 GARDEN/MOLINARI-PRADELLI); ROSSINI: ARIAS FROM "IL
 BARBIERE DI SIVIGLIA"; L'ITALIANA IN ALGERI(LON SYM/
 GIBSON); DONIZETTI: BETLE, OPERA IN I ACT(CHORUS & ORCH
 OF SOCIETA OEL QUARTETTO, ROME/MORELLI); BELLINI:
 ARIA FROM "BEATRICE DI BENDA"(LON SYM/BONYNGE); DONI-
 ZETTI: OVT FROM "DON PASQUALE"(VIENNA OPERA ORCH/
 KERTESZ)

ALL STEREO

6:00 SIGN ON
 6:05 START THE DAY IN
 STEREO
 7:30 SPORTS
 8:35 MID-MORNING SERE-
 NADE LIGHT MUSIC
 11:57 MARKETS
 12 NOON
 12:00 SOUND OF STEREO
 1:00 LIGHT AND LIVELY
 5:30 OVERTURE

WRVR 106.7

WRLB 107.1

6pm

6:00 JUST JAZZ WITH ED BEACH EDDIE HARRIS ON TENOR, I
 8:00 **THE OPERATIC TOSCANINI** RECORDINGS OF ARTURO
 TOSCANINI'S OPERA BROADCASTS WITH THE NBC SYM ORCH
 9 PM

10:00 **SEEDS OF DISCONTENT** A DOCUMENTARY EXPLORATION OF
 SOCIAL PROBLEMS OCCURRING MAINLY IN URBAN CENTERS. TO-
 NIGHT'S PROGRAM REVEALS FEELINGS AND ATTITUDES OF THE
 POVERTY STRICKEN ABOUT CONTEMPORARY WELFARE SYSTEMS.

10:30 **LISTEN!** A NIGHTLY LOOK AT THE NEW & UNUSUAL WITH
 TIMELY TALKS, INTERVIEWS AND PERFORMANCES

11:30 **NIGHT CALL** A NATIONWIDE CALL-IN PROGRAM GIVING
 THE BLACK "MAM" IN THE STREET" AND HIS WHITE COUNTER-
 PART AN OPPORTUNITY TO COMMUNICATE WITH EACH OTHER
 OVER THE AIR ON SELECTED CONTROVERSIAL ISSUES OF MUTUAL
 CONCERN. THE AUDIENCE CAN TAKE PART IN THE DISCUSSION
 BY TELEPHONING NIGHT CALL COLLECT FROM ANYWHERE IN THE
 COUNTRY. DEL SHIELDS IS THE NIGHT CALL HOST, AND
 THE LISTENER CALL-IN NUMBER IS (212) 749-3311.

12:30 SIGN OFF

6:00 OVERTURE CONTO
 6:30 WALL STREET
 6:35 OVERTURE CONTO
 8:00 INTERLUDE
 9 PM
 JAZZ AND POP
 11:00 FINALE

NEWS ON THE HOUR



WKCR's Folk Music Director, Donny Linder, plays folk, blues, and anything that comes along, including guests, throughout the entire summer: Sunday, 2 p.m. - 6 p.m., **NEARLY THE END**; Thursday, 1 a.m. - 3:30 a.m., FOLK WORKSHOP; Monday-Friday, 9 p.m. - 10 p.m. **JUST THE BEGINNING.**

THURSDAY JULY 18

STEREO AS INDICATED*
 2:00 *DABBLING POP, FOLK AND ANYTHING GOES!
 2:30 *THE PRIMROSE PATH CONTINUED DABBLING IN POP AND FOLK
 5:00 *TWILIGHT CONCERT DOWLAND: FIRST BOOK OF AYRES (CAPE); PURCELL: COME YE SONS OF HEART (DELLER)

4:00 MUSICALE LIGHT MUSIC
 5:00 THE SACRED HEART PROGRAM
 5:15 NAVY BAND SHOWCASE
 5:30 EVENING REPORT NEWS, SPORTS

ALL STEREO
 6:30 SIGN ON
 6:45 TOP O THE MORNIN
 8:45 KERSHNER COMMENTARY
 10:05 ON STAGE 110 IN THE SHADE
 11:05 BUNNY'S CORNER
 12 NOON
 12:05 BUNNY'S CORNER
 12:30 LUNCH WITH DORE REED
 1:30 STEREO SHOWCASE
 2:05 POP CONCERT BLUE DANUBE WALTZ; VIENNA WOODS (ORMANDY); RIMSKY-KORSAKOV: RUSSIAN EASTER OVT; GLINKA: RUSSIAN & LUDMILLA OVT
 3:05 STEREO SHOWCASE
 5:05 COCKTAILS FOR TWO

STEREO AS INDICATED*
 6:00 SUNRISE SYMPHONY TCHAIKOVSKY: ROMEO & JULIET (MAAZEL); PROKOFIEV: SYM. STE OF WALTZES (SCHWIEGER)
 7:00 AROUND NEW YORK ANDRE BERNARD
 8:45 CONSUMER REPORT/LISTEN TO NUTRITION
 9:00 *MASTERWORK HOUR FEATURING ANNA & MICHAEL GALPERIN (DDHANY); STE IN FM-(KATINS); DUSSEK: CONC IN B^b FOR 2 PIANOS (SCHWARTZ); KODALY: HARY JANOS STE (LEINSDORF)
 10:30 YOU AND YOUR HEALTH
 11:00 SPOKEN WORDS POETRY BY SHELLEY
 12 NOON
 12:00 MUNICIPAL SYMPHONY BLOCH: CON GROSSO NO. 2 (SOLOMON); RICHTER: LAMENT FOR ST ORCH (SOLOMON); CRESTON: ACCORDIAN CONC (CAROZZO/FIEDLER)
 1:00 FAMOUS ARTISTS CHRISTOPH ESHENBACH
 2:00 *CHAMBER ENSEMBLE BOCCHERINI: ST QT IN F (SHAPIRO/STRADIVARI QT); MOZART: 6 COUNTRY DANCES (SALZBURG MOZART PLAYERS); ST QT IN F; CONC FOR Q VLNS, OBOE, CELLO & ORCH (RISTENPART)
 4:00 ACTION REPORT DAVID LOWE
 5:30 NEW YORK CITY NEWS

ALL STEREO
 (WHEN SCHEDULED N.Y. METS BASE-BALL WILL PREEMPT REGULAR PROGRAMMING
 9:00 THE NOW MUSIC POPULAR MUSIC OF TODAY
 12 NOON
 AND RECENT YESTERDAYS

6pm WKCR 89.9	WFUV 90.7	WLIR 92.7	WNYC 93.9	WABC 95.5
---------------	-----------	-----------	-----------	-----------

7:00 FROM THE COLUMBIA CLASSROOM
 8:00 WORLD REPORT
 8:30 NEW YORK CITY AT LARGE
 9 PM
 9:00 *JUST THE BEGINNING FOLK AND BLUES WITH DONNY LINDER
 10:00 *KING'S CROWN CONCERT VAUGHN WILLIAMS: SYMPHONIES: NOS. 4, 5, 8; PARTITA; HODIE
 1:00 *FOLK WORKSHOP

6:00 EVENING CONCERT SADLER'S WELLS BALLET TRIBUTE (ROYAL OPERA ORCH/IRVING); DELLO JOIO: FANTASY & VARIA (BOSTON SYM/LEINSDORF)
 7:15 COLLEGE AUTHORS FORUM
 7:30 THE TIME CAPSULE TOM LUCIANI & JOE MARCHESANI: BLUES FROM THE 50S
 8:30 FRANCE APPLAUDS J. HELIAN & ORCH/SINIAYVINE/AUFRAY
 9 PM
 9:00 THE CHAMBER MUSIC RECITAL MOZ-ART: SONAS FOR VLN & PIANO (SZIGETI/HORSZOWSKI)
 10:00 PIANO IN PARTICULAR BEETHOVEN: SYM NO. 5 (GOULD)
 11:00 CONCERT RARITIES WELLINGTON PECORA WEBERN: 5 PIECES FOR ORCH (NEW PHILH ORCH/PRAUSNITZ); RACHMANINOFF: SYM NO. 3 (PHILADELPHIA ORCH/ORMANDY)

6:05 DINNER FOR TWO
 7:00 FINANCIAL REPORT
 7:05 DINNER FOR TWO
 9 PM
 9:05 IMAGES FOR ORCH-ESTRA CHAPI: PRELUDE: EL TAMBOR DE GRANAD-ERO (MADRID SYM/SOROZABAL); GRIEG: LYRIC STE (MOSCOW RADIO SYM/ROZHDSTVENSKY); LEC-LAIR: CONC IN A (PAIL-LARD CHAMB ORCH/GER-NANDEZ); BACH: MISSA BREVIS NO. 2 (PRO ARTE ORCH OF MUNICH/REDEL); RAMSAY: QT CON (L'ENS ALARIUS DE BRUELLE); HAYDN: SYM NO. 89 (BER-LIN PHIL/FURTWANGLER)
 11:05 EVENING PERFOR-MANCE HIGH SPIRITS
 12:05 STARDUST
 3:00 SIGN OFF

6:00 LOCAL PRESS REPORT
 6:15 OVER THE BACK FENCE
 6:30 JAPANESE PRESS REVIEW
 7:00 *MASTERWORK HOUR BERLIOZ: ROMEO & JULIET - DRAMATIC SYM (MUNCH)
 8:30 NAUMBURG ORCHESTRA CONCERT
 9 PM
 10:00 TOSCANNINI LEGACY
 11:00 SPOKEN WORDS
 1:00 WHILE THE CITY SLEEPS BERNARD KRAINIS

6:00 THE NOW MUSIC WITH EMPHASIS ON THE CURRENT SOUND
 9 PM
 IN THE MAINSTREAM OF NON-HARD ROCK
 12:00 SIGN OFF
 NEWS FIVE MINUTES BEFORE THE HOUR

NEWS ON THE HOUR

SELECTIONS

From stations not in daily Folio-Dial

10:00 WAHZ 99.1 MORNING CONCERT MOZART: PIANO CONC NO. 18
 12 NOON
 2:00 WAHZ 99.1 AFTERNOON CONCERT BRUCH: VLN CONC NO. 2
 6 PM
 6:30 WEVD 97.9 MUSIC HIGHLIGHTS DONIZETTI: DON PAS-QUALE OVT (NBC SYM/TOSCANNINI); MENDEL-SSOHN: PIANO CONC NO. 1 (DORFMANN/RO-GIN HOOD BELL ORCH/LEINSDORF); BERLIOZ: SYM FANTASTIQUE (SAN FRANCISCO SYM/MON-TEUX)
 9 PM
 9:00 WHLI 98.3 CONCERT AT NINE MOZART: MINUET IN C K. 409 (VIENNA MOZART ENS/BOSKOVSKY); PIA-NO SON IN B^b K. 425 (MENUMHIN, RYCE); SYM NO. 36 K. 425 (VIENNA PHIL/BERNSTEIN)

ALL STEREO
 6:00 PIX PENT-HOUSE WITH TOM MERCEIN
 10:00 PIX PENT-HOUSE WITH
 12 NOON
 12:00 PIX PENT-HOUSE WITH
 2:00 PIX PENT-HOUSE WITH AL D'AMICO
 4:00 ART FORD'S MAN-HATTAN
 5:00 PIX PENT-HOUSE WITH BOB WESTON

ALL STEREO
 6:00 DICK SUMMER SHOW
 10:00 JONATHAN SCHWARTZ AND
 12 NOON
 THE BEST OF THE CURRENT SCENE
 2:00 SCOTT MUNI WITH

ALL STEREO
 6:00 SUNRISE STEREO
 6:45 VOICE OF UNITY INSPI-RATION TO BEGIN ANOTHER DAY
 7:00 STEREO REFLECTIONS
 12 NOON
 12:05 STEREO REFLECTIONS CONTINUED
 4:00 WALL STREET FINAL
 4:05 STEREO REFLECTIONS CONTINUED

ALL STEREO
 6:57 SIGN ON
 7:00 MORNING SHOW RAY MURRAY
 MUSIC, TALK, NEWS, WEATHER, TRAFFIC
 9:00 MORNING MOOD LIGHT MUSIC
 12 NOON
 12:00 NOON NEWS ROUNDUP
 12:20 MIDDAY MUSICALE
 2:05 ALBUMS IN STEREO
 4:05 WIDE WORLD OF MUSIC
 5:05 STOCK MARKET REPORT BLAIR & CO
 5:55 COMMUNITY EVENTS PHIL GRASSIA

WVJN 100.3	WPIX 101.9	WNEW 102.7	WTFM 103.5	WRFM 105.1	WDHA 105.5
------------	------------	------------	------------	------------	------------

LIGHT MUSIC
 9 PM
 9:05 CURTAIN TIME GOLDEN BOY
 12:05 SIGN OFF
 NEWS ON THE HOUR

6:00 PIX PENT-HOUSE WITH BOB WESTON
 8:00 PIX PENT-HOUSE WITH
 9 PM
 STAN MARTIN
 12:00 MANHAT-TAN AFTER HOURS WITH KEN LAMB
 NEWS ON THE 58 MINUTE MARK

A BRAND-NEW BAG
 7:00 ROSKO DEFINES
 9 PM
 "SOUL" AND A FEW OTHER THINGS
 12:00 ALISON STEELE WITH ROCK FOR NIGHT PEOPLE TILL 6 A.M.

6:00 SIX O'CLOCK REPORT WITH FRED DARWIN
 6:15 STEREO SPEC-TACULAR WITH BRYCE BOND
 8:05 MUSIC OF AMERICA HOUR OF GREATNESS
 9 PM
 9:05 STEREO SPEC TACULAR WITH BRYCE BOND
 12:05 JAZZ IN STEREO WITH TED RADO TILL 6:00 A.M.

6:00 WRFM NEWS FINAL NEWS, FINANCES, SPORTS WEATHER
 6:15 STEREO REFLECTIONS CONTD
 6:50 QUINCY HOWE COMMENTARY
 7:05 ERWIN FRANKEL --AROUND THE WORLD
 8:05 EVENING IN STEREO
 9 PM
 MUSIC, NEWS WEATHER
 12:00 STEREO FOR NIGHT PEOPLE TILL 6:00 A.M.

NEWS ON THE HOUR

YOUR FM DIAL. See above or pages FM 73-78 for programming details. ★ Indicates some/all stereo.

WCWP 88.1	WBG0 88.3	WVHC 88.7	WSOU 89.5	WKCR 89.9	WFUV 90.7	WFMU 91.1	WNYE 91.5	WHOM 92.3	WLIR 92.7	WPAT 93.1	WVOX 93.5	WNYC 93.9	WJLK 94.3	WGSN 94.3	WFME 94.7	WABC 95.5	WQXR 96.3	WSTC 96.7	WNBC 97.1	WALK 97.5	WEVD 97.9	WHLI 98.3	WLAD 98.3	WCTC 98.3
-----------	-----------	-----------	-----------	-----------	-----------	-----------	-----------	-----------	-----------	-----------	-----------	-----------	-----------	-----------	-----------	-----------	-----------	-----------	-----------	-----------	-----------	-----------	-----------	-----------

THURSDAY JULY 18

STEREO AS INDICATED*

6:00 BRIGHT AND EARLY GEORGE EDWARDS WEATHER, NEWS, TIME, BUSINESS
 8:00 NEW YORK TIMES NEWS ROUNDUP
 9:07 PIANO PERSONALITIES INGRID HAEBLER
 10:07 LISTENERS' CHOICE

12 NOON

12:15 MUSIC A LA CARTE GEORGE EDWARDS
 1:07 BE MY GUEST BOB LEWIS MENDELSSOHN: THE HEBRIDES OVT (10/LON SYM ORCH/MAAG); HAYDN: MINUET (5/SEGOVIA); PROCH: THEME & VARIA (5/ROBIN/LON SYM/FISTOULARI); SMETANA: HAAKON JARL (16/CZECH SYM ORCH/SEJNA); DEBUSSY: CHILDRN'S CORNER STE (17/CONCERT ARTS ORCH/SLATKIN); KABALEVSKY: VLN CONC IN C (16/OISTRAKH/USSR RADIO ORCH)
 3:07 LISTENING TO MUSIC LLOYD MOSS OPERETTA - VIENNESE & SPANISH LEHAR: THE MERRY WIDOW; E-CSCHWARZKOPF/WACHTER/GEDDA/STEFFEK/PHILH ORCH & CHR/VON MATAJCIC); KALMAN: BRAMMER & GRUNWALD: SEL (16/FRIEDAUER/REICHAUT/ANDERS/BARABAS-SCHOCK); J. STRAUSS: DIE FLEDERMAUS: EXC (GUEDEN/RESNIK/WACHTER/LEHNA PHIL ORCH & CHR/VON KARAJAN); LUNA: BENAMOR: ROMANZA (4/AUSENS); SYM ORCH/ARGENTA); CHAPI: THE WAFER SELLER: EXC (7/CABALLE/ORCH/MARC); CABALLERO: DEL DUO DEL AFRICANA: EXC (7/CABALLE/MARTI/ORCH/MARC); SOROZABAL/HERREDO: MARTI & DEL CASTILLO: EXC (3/KRAUS/MADRID CON ORCH/SOROZABAL); SCHUMANN: SYM NO. 2 IN C (37/CLEVELAND ORCH/SZEL)
 5:07 STEREO CAVALCADE HABBRIER: LA ROI MARGRE LUI: SEL (8/DETROIT SYM ORCH/PARAY); DELIUS: FLOIDA STE: SEL (8/ROYAL PHIL/BEECHAM); COPLAND: EL SALON MEXICO (11/NY PHIL/BERNSTEIN)

WQXR 96.3

6:00 NEW YORK TIMES NEWS ROUNDUP STOCK MARKET, EDITORIAL, BUSINESS
 7:15 NEW YORK TIMES VIEWS THE ARTS
 7:30 THE VOCAL ART HIGHL GHTS FROM MOZART'S ABDUCTION FROM THE SERAGLIO
 8:07 SYMPHONY HALL MENDELSSOHN: ST SYMPHONY NO. 12 (18/CHAMB ORCH/MARRINER); GRIEG: PIANO CON IN A- (28/KATCHEN/ISRAEL PHIL/KERTSZ) 9 PM
 9:07 GILBERT & SULLIVAN "THE PIRATES OF PENZANCE" (D'OYLY CARTE OPERA CO/NEW SYM ORCH OF LON/DOFFREY)
 10:07 CONCERTO CLASSICS MOZART: PIANO CON NO. 21 (28/RUBINSTEIN/SYM ORCH/WALLENSTEIN); GASTELNUOVO/TEDESCO: GUITAR CON (19/SEGOVIA/NEW LON ORCH OF ENGLAND/SHEEMAN)
 11:00 NEW YORK TIMES NEWS ROUNDUP
 11:15 NIGHTCAP PURCELL: THE VIRTUOUS WIFE, STE (10/STS OF THE HARTFORD SYM/MAHLER); VIVALDI: VLN CONC IN B (10/GERLE/VIENNA RADIO ORCH/ZELLER); HAYDN: DIV FOR CELLO & ORCH (10/PJATIGORSKY/CHAMB ORCH)
 12:07 MIDNIGHT WITH MUSIC SCHUBERT: TRIO IN E (41/BUSCH/BUSCH/SERKIN); DVORAK: NOTTURNO FOR STS (8/VIENNA OPERA ORCH/SVOBOVA); BORODIN: QT NO. 1 IN A (40/VIENNA KONZERTHAUS QT); MOZART: ADAGIO & FUGUE IN C- (9/PHILH ORCH/KLEMPERER)

NEWS ON THE HOUR

6:50 SIGN ON
 7:00 JUST JAZZ WITH ED EACH BILLIE HOLLIDAY: 1951-57, I
 9:00 JUST MUSIC WITH CONSTANCE COOPER PROKOFIEV:
 BETHROTHAL IN A MONASTERY

12 NOON

12:00 JUST MUSIC 20TH CENTURY MUSIC FROM SCANDINAVIA
 NIELSEN: SYM NO. 6 (PHILADE. PHIA ORCH/ORMANDY); VALEN: CONC FOR PIANO & CHAMB (CSLO PHIL/FJELDSTAD); ROSENBERG: VOYAGE TO AMERICA (STOCKHOLM PHIL/DORATI); HALVORSEN: NORWEGIAN RHAPSODY NO. 2; NIELSEN: SONGS (ASKEL SCHIOTZ); EGGE: SYM NO. 2; BLONDAHL: STE FROM "SISYPHOS" (STOCKHOLM PHIL/DORATI); JOHANSEN: SYM FANTASY (OSLO PHIL ORCH/FJELDSTAD); NIELSEN: 3 PIANO PIECES, OP. 59; BERWALD: SINF CAPRICIEUSE (STOCKHOLM PH L/DORATI); JENSEN: THEME & VARIA (OSLO PHIL/GRUNER-HEGGE); NIELSEN: CONC FOR CLAR & ORCH (DRUCKER/NY PHIL/BERNSTEIN); WIREN: SERE FOR ST (STOCKHLM SYM/VESTERBERG); TVEITT: STE NO. 4 (OSLO PHIL/GRUNER-HEGGE); RIISAGER: CONC FOR TRUMPET & ORCH (JOHNSON/PHILADELPHIA ORCH/ORMANDY); BRAEIN: SERE, OP. 5 (OSLO PHIL/FJELDSTAD); NIELSEN: ST QT IN F; SAEVERUD: BALLAD OF REVOLT (OSLO PH L/GRUNER-HEGGE); LARSSON: LITEN MARCH (STOCKHOLM SYM/VESTERBERG); GROVEN: HJALAR LJOD OVT (OSLO PHIL/FJELDSTAD); NIELSEN: CONC FOR FLUTE & ORCH (BAKER/NY PHIL/BERNSTEIN)

WVRV 106.7

6:00 JUST JAZZ WITH ED EACH BILLIE HOLLIDAY: 1951-57, I
 8:00 STUUD TERKEL INTERVIEWS KEVIN DANAHAR, AN IRISH AUTHOR VISITING CHICAGO
 9:00 RIVERSIDE RADIO ROUNDUP
 10:30 LISTEN! A NIGHTLY LOOK AT THE NEW AND UNUSUAL WITH TIMELY TALKS, INTERVIEWS AND PERFORMANCES
 11:30 NIGHT CALL A NATIONWIDE CALL-IN PROGRAM. THE AUDIENCE CAN TAKE PART IN THE DISCUSSION BY TELEPHONING NIGHT CALL COLLECT FROM ANYWHERE IN THE COUNTRY. DEL SHIELDS IS THE NIGHT CALL HOST, AND THE LISTENER CALL-IN NUMBER IS (212) 749-3311.
 12:30 SIGN OFF

WVRV 106.7

STEREO AS INDICATED*

6:00 BIG WILSON NEWS, MUSIC, TALK
 9:00 DR. JOYCE BROTHERS DISCUSSION
 10:00 STERLING YATES SWAP SHOW
 11:05 PETITE SYMPHONY HAYDN: SYM NO. 81 IN G (ESTERHAZY ORCH/BLUM); STAMITZ: SYM IN A (MUNICH CHAMB ORCH/STADLMAIR)

12 NOON

12:05 CONCERTO HAYDN: CONC IN E^b FOR TRUMPET & ORCH (JEANOUTET/PRO ARTE CHAMB ORCH/REDEL); MOZART: CONC NO. 17 IN G FOR PIANO & ORCH (SERKIN/COLUMBIA SYM ORCH/SCHNEIDER)
 1:05 ESSAY FOR ORCHESTRA R. STRAUSS: LE BOURGEOIS GENTILHOMME STE (CHICAGO SYM/REINER); RAVEL: VALSES NOBLES ET SENTIMENTALES
 2:05 OPERA-BALLET THEATRE HANDEL: ALCINA: EXC (SUTHERLAND/BERGANZA/LON SYM/BONYNGE)
 3:05 SOUND OF SYMPHONY SCHUMANN: SYM NO. 4 IN D- (CLEVELAND ORCH/SZELL); SIBELIUS: SYM NO. 7 IN C (JAPAN PHIL ORCH/WATANABE)
 4:05 RECITAL HALL FEATURING CZIFFRA LISZT: SONETTO DEL PETRARCA; SCHUMANN: SYM ETUDES, OP. 23; LISZT: LEGENDE NO. 2 "ST. FRANCIS WALKING ON THE WATER"
 5:05 BILL MAZER SHOW

WNBC 97.1

6:00 BILL MAZER SHOW CONTO
 7:00 NEW YORK CITY NEWS WORLD, LOCAL, MARKET
 7:45 WORLD NEWS ROUNDUP
 8:05 SERENADE STRAUSS: GYPSY BARON WALTZES (CAPITOL SYM/DORATI); MOZART: NOTTURNO FOR 4 ORCHS (LON SYM/MAAG); CHOPIN: WALTZ NO. 1 IN E^b (CAPITOL SYM/DORATI); DEBUSSY: VALSE, LA PLUS QUE LENTE (HOLLYWOOD BOWL SYM/DORATI); TCHAIKOVSKY: ROMANCE IN F-; DELIBES: WALTZ FROM BALLET COPPELIA; PUCCINI: MUSETTA'S WALTZ SONG 9 PM
 9:05 MUSICAL FOOTNOTES ALKAN: LE FESTIN D' ESCOPE, OP. 39 (LEVENTHAL); MENDELSSOHN: 5 SONGS FOR CHORUS (CAMERATA VOCALE); BERLIOZ: REVERIE ET CAPRICE, OP. 8 FOR VLN & ORCH (S.W. GERMAN RADIO ORCH/REINHARDT); MOZART: CONC NO. 1 IN B^b FOR BASSOON & ORCH (ROYAL PHIL/BEECHAM); BRAHMS: WALDESNACHT, OP. 62 FOR CHORUS (PHIL ORCH/BEECHAM/CAMERATA VOCALE)
 10:05 CONCERTO SCHUMANN: GENOVEVA OVT (BER: IN PHIL ORCH/KUBELIK); SAINT-SAENS: CONC NO. 4 IN C FOR PIANO & ORCH (CASAPESUS/NY PHIL/BERNSTEIN); BRAHMS: SYM NO. 1 IN C- (PITTSBURGH SYM/STEINBERG); RAMEAU: BALLET STE: CASTOR ET POLLUX (LON SYM ORCH/MACKERRAS)

NEWS ON THE HOUR

ALL STEREO

6:00 SIGN ON
 6:05 START THE DAY IN STEREO
 7:30 SPORTS
 8:35 MID-MORNING SERENADE LIGHT MUSIC
 11:57 MARKETS
 12 NOON
 12:00 SOUND OF STEREO
 1:00 LIGHT AND LIVELY
 5:30 OVERTURE

WRLB 107.1

6pm

6:00 OVERTURE CONTO
 6:30 HALL STREET
 6:35 OVERTURE CONTO
 8:00 INTERLUDE
 9 PM
 JAZZ AND POP
 11:00 FINALE

NEWS ON THE HOUR



DICK SUMMER, FORMERLY OF BOSTON'S WBZ, HAS JOINED THE "NEW GROOVE" RANKS AT WNEW-FM (102.7). HIS KNOWLEDGE AND RESPECT FOR CONTEMPORARY MUSIC HAVE WON HIM WIDE APPEAL. SUMMER WRITES HIS OWN PROGRAMS AND PRESENTS IT ON HIS BROADCASTS WITH MUSICAL BACKGROUND. HE WILL CONTINUE THIS FORMAT ON HIS WNEW-FM PROGRAM (MONDAY THRU SATURDAY, 6-10 A.M.).

STANDARD PROGRAMMING MONDAY-FRIDAY

IN THIS SECTION, FM GUIDE PROVIDES THE FULL PROGRAM SCHEDULE FOR THE FM STATIONS IN THE NEW YORK METROPOLITAN AREA WHOSE PROGRAMS VARY LITTLE FROM DAY TO DAY. SEPARATE SCHEDULES ARE SHOWN FOR MONDAY THROUGH FRIDAY, SATURDAY, AND SUNDAY.

WHEN AN ASTERISK (*) APPEARS BEFORE AN INDIVIDUAL PROGRAM, A MORE DETAILED DESCRIPTION OF THAT PROGRAM WILL APPEAR IN "SELECTIONS" IN THE DAILY FOLIO-DIAL.

4:00 HARRY GROSS-MAN SHOW(MON); NORM NAVAL(TU); RON STONE(WED); ED TSCHAMPION(F); NORM NAVAL(TH)

5:30 SPORTS REVIEW(M, TH); ONE REPORTER'S VIEW(TU); RECORD REVIEW(W); CENTER-PIECE(FRI)

WSOU IS ON ITS SUMMER SCHEDULE AND WILL RESUME NORMAL BROADCASTING THIS FALL

STEREO AS INDICATED*
6:00 CAROUSEL
10:00 GASLIGHT
12 NOON
PRELUDES
3:00 *LIME-LIGHT
4:00 LIMELIGHT

6:00 OPERATION EARLY BIRD JEFFREY SPRUNG MUSIC, NEWS, WEATHER
7:00 NEWS WILLIAM O'SHAUGHNESSY
7:30 SPORTS LARRY FRIEDMAN
8:00 NEWS JOHN WANAMAKER, WILLIAM O'SHAUGHNESSY
10:00 STUDIO IN THE ROUND
10:30 WESTCHESTER U.S.A. PHONE CALLS
11:05 STUDIO CONTD 12 NOON
12:00 NEWS
12:15 STUDIO CONTD
5:00 NEWS
5:15 STUDIO CONTD

6:00 ALARM CLOCK CLUB MUSIC, NEWS, SPORTS, WEATHER
8:20 POINT OF LAW
9:15 MORNING CHAPEL
10:15 LISTENING UNLIMITED
11:45 LADY TALK 12 NOON
CONTINUED
12:45 OCEAN COUNTRY
1:15 EDITORIAL
1:20 SPEAKING OF SCHOOLS
1:30 WHY NOT ASK? (M, W, F)
2:15 BROADWAY MATINEE
4:15 ROLLING HOME
5:20 MONMOUTH PARK FEATURE RACE
5:55 MARKETS

6:00 PORTALS OF PRAYER
6:05 MORNING CLOCK
6:30 MOMENTS OF PRAISE
8:00 NEWS
9:00 DATELINE ETERNITY
PROF. WALTER MARTIN
9:30 CHRISTIAN HOME
9:45 PSYCHOLOGY FOR LIVING DR. NARRAMORE
10:00 PRAYER TIME
11:00 MOMENTS OF PRAISE 12 NOON
12:00 NEWS/GUIDELINES
12:15 CHAPEL OF THE AIR JOHN JESS
12:30 ORGAN TIME LORIN WHITNEY
1:00 READING CIRCLE HERB WELLS
1:30 MUSIC TO LIVE BY
2:00 FROM THE STUDY
3:00 MOMENTS OF PRAISE
4:00 BIG JON AND SPARKIE CHILDREN
4:30 SECRET HIDEOUT
4:45 SACRED MELODIES
5:00 TEEN FEATURE
5:30 EVENSONG

6pm	WCWP 88.1	WVHC 88.7	WSOU 89.5	WPAT 93.1	WVOX 93.5	WJLK 94.3	WFME 94.7
-----	-----------	-----------	-----------	-----------	-----------	-----------	-----------

6:00 NEWSLINE
6:30 DIANE HADON (TU); NEW SOUND (W-TH); MARK KATZ(F)
7:30 WCWP HIGHLIGHT
8:00 NEW SOUND (M); JOHN TURELLE(W); JUNI THOMAS(TH) 9 PM
9:00 ED TSCHAMPION (M); JOHN LI BRETTO(TU-TH); KAZ DZIKOWSKI(W); JOHN KARL(F) 9 PM
10:00 BOB LIPKIN (TU); JUNI THOMAS(TH); JAZZ-OLYMPY(F)
11:00 MIKE KAUFMAN(W); DENNIS STREEM(TU); LARRY BRODSKY(TH); NORM NAVAL(F)
12:00 SIGN OFF

6:00 CENTERPIECE(M-TH); ANTHOLOGY OF INDIAN MUSIC(FRI)
6:30 DON'T DRINK THE WATER(M); WHITHER CHINA(TU); LISTENING BOOTH(W); MENTAL HEALTH(TH)
7:00 MYTH AND THE MUSIC(M); FOLK SHOW (TU-TH); MUSIC FACTORY(FRI)
8:00 COMMUNICAST FORUM
8:30 JAZZ SCENE(M, W); MIXED JAZZ BAG(TU); WORLD OF JAZZ(TH); 9 PM
SPOTLIGHT 88(F)
10:00 ART OF THE FILM(M); POLLUTION (TU); TIME WILL NOT TELL(W); SPECIAL OF THE WEEK(TH)
10:30 NIGHTSONG

6:00 MUSICAL ENTREE
6:30 EASY LISTENING BRIAN MCFADDEN(F)
7:00 RADIO PORTUGAL(W); DO YOU KNOW?(TU); COMMUNITY EDUCATION(W); MASTER CONTROL(TH)
7:30 UKRANIAN(W); RELIGIOUS FORUM(TH); ACROSS THE FOOTLIGHT(P) LOYD MCBRIDE
8:00 MUSIC OF LITHUANIA(W); NEWS/SPORTS(TU); WED. NITE AT THE OPERA(W); CELEBRATION OF THE CENTURIES(TH); RELIC RACK SUMMER '68 JOHN L. SULLIVAN(F) 9 PM
9:00 PAGEANT OF IRELAND(M); GOV. HUGHES(TUE); ORGAN MASTERWORKS(TH); R/B WITH EDDIE
9:15 MEN AND MOLECULES(TUE)
9:30 POLKA PARTY(M); PERSPECTIVE(TUE); NEW FOLK ROCK SPIDER HOFFMAN/GEORGE GERNEY
10:00 REACTION-TELEPHONE TALK (TU); INTERN'TL CONCERT HALL (TH); JAZZ HARRY SHAPIRO(F)
11:00 SIGN OFF

CONTINUED
7:00 GASLIGHT REVUE
8:00 *GASLIGHT 9 PM
REVUE
10:00 GASLIGHT CONTD
12:00 THE NIGHT SHOW TIL 6 AM
NEWS ON THE HALF HOUR

CONTINUED
9 PM
CONTINUED
10:00 NEWS
10:15 STUDIO IN THE ROUND CONTINUED
12:00 SIGN OFF

6:00 FOR YOUR INFORMATION
7:15 AS 1 SEE IT COMMENTARY
8:15 SUMMER CONCERT (M, TH); FOLK CONCERT (F) 9 PM
9:15 DIRECTIONS IN JAZZ(M); MUSIC ALBUM(T, TH); JAZZ CORNER(W); ART OF JAZZ (F)
12:00 SIGN OFF
NEWS AND WEATHER EVERY HALF HOUR

6:00 NEWS/COMMENTARY
6:15 EVENSONG CONTD
6:55 MOMENTS OF PRAISE
7:00 BACK TO THE BIBLE
7:30 EVENSONG CONTD
8:00 UNSHACKLED
8:30 LIFE WITH MEANING 9 PM
9:00 MOMENTS OF PRAISE
9:05 CONFERENCE ECHOES
10:00 NEWS
10:05 ANVIL HOUR(M); OPEN FORUM(TU-TH); PASTOR'S STUDY(FRI)
11:00 POSTLUDE
11:55 MOMENTS OF PRAISE
12:00 QUIET TIME
12:15 NIGHTWATCH
ED LEWIS

ALL STEREO

6:00 HAL MITCHELL LATEST HITS
9:00 SEBASTIAN STONE
12:00 NOON
12:00 TONY TAYLOR
4:00 JIM O'BRIAN

6:30 MORNING SERVICE
7:15 CHAPEL TIME
7:45 NEWS FOR YOU
8:00 BIBLE SERMON AND SONGS
8:30 COMMUNITY GOSPEL SERMONS
9:00 *CONCERT
10:00 MUSICAL KALEIDOSCOPE
11:00 COLLEGE/SEMINAR
11:30 CHRISTIAN HOME 12 NOON
12:00 LIGHT MUSIC
1:00 HYMN TIME
1:30 RADIO PULPIT
2:00 *CONCERT
3:00 LIGHT MUSIC
4:00 TODAY IN PUBLIC AFFAIRS
4:30 FAMILY WORSHIP
5:00 LIGHT MUSIC
5:30 DEVOTIONS

ALL STEREO

5:30 TOP ONE HUNDRED THE

5:30 SERMONETTE
5:35 FARM REPORT
5:45 TOP OF THE MORNING
10:05 JOURNEY INTO MELODY 12 NOON
12:00 NEWS
12:15 MIDDAY MEDLEY MUSIC
1:00 NEWS
1:10 MELODY MATINEE MUSIC
2:30 LAWRENCE MELK (MON); LETS GO TO CLASS(TU); MUSIC FROM WEST POINT(W); SERENADE IN BLUE(TH) THE GOOD LIFE (F)
3:05 MELODY MATINEE MUSIC
4:05 DESIGNS FOR LISTENING

STEREO AS INDICATED*

6:00 THE YOUNG SOUND MORNING SHOW NEWS, MUSIC, INFORMATION WITH WALLY KING
10:00 *THE YOUNG SOUND

6:00 GOOD MORNING, LONG ISLAND BOB DORIAN
10:05 COMMUNITY DATELINE
10:10 THE ITALIAN HOURS JOE ROTOLO 12 NOON
12:00 MEMORY LANE TONY JAMES
1:00 LUNCHEON DATE
2:00 MATINEE JAN ANDERSON
4:30 DISK O TEK MIKE JEFFRIES

ALL STEREO

7:00 CAROUSEL
9:00 MID-DAY 12 NOON
12:00 NEWS
12:30 LUNCHEON SERENADE
2:00 PEOPLE SPEAK OPEN MIKE DISCUSSION AL SHIELDS
3:00 SOUND SPECTACULAR
4:30 *ONE FOR THE ROAD

STEREO AS INDICATED*

6:00 ENGINEER'S SPECIAL
6:30 POLKA JAMBOREE
7:00 WAKE UP TO MUSIC AL SHIELDS
7:30 NEWS
7:45 WAKE UP CONTD
10:00 MUSICAL CHARADES
10:15 RECORD ROOM MUSIC BOB MACKEL 12 NOON
12:00 NEWS
12:30 LUNCHEON SERENADE
2:00 PEOPLE SPEAK OPEN MIKE DISCUSSION AL SHIELDS
3:00 SOUND SPECTACULAR
4:30 *ONE FOR THE ROAD

6pm	WOR 98.7	WAWZ 99.1	WJZZ 99.9	WLNA 100.7	WCBS 101.1	WBAB 102.3	WPRB 103.3	WHRF 103.9
-----	----------	-----------	-----------	------------	------------	------------	------------	------------

O'BRIAN (CONT'D)
7:00 BOB ELLIOT 9 PM
ELLIOT (CONT'D)
12:00 STEVE CLARK TILL 6 AM

6:00 PILLAR OF FIRE SOLISTS(M, TU, TH, F); COMMUNITY HOUR (W)
6:15 READINGS
6:45 NEWS(M, W, TH, F); GOVERNOR'S PRESS CONFERENCE(TU)
7:00 CHILDREN'S BIBLE STORY HOUR
7:15 COMMUNITY PROGRAMS
7:30 SIGN OFF

ONE HUNDRED MOST POPULAR 9 PM
CLASSICAL PERFORMANCES 11:30 SIGN OFF
6:00 NEWS
5:15 EVENING MELODY MUSIC
6:30 YOUR WORLD OF SONG MUSIC
8:00 NEWS
8:05 MELODY TIME 9 PM
9:00 NEWS; MELODY TIME CONTD
10:00 MUSIC TIL MIDNIGHT
12:00 NEWS
12:05 AFTER HOURS
1:55 HEADLINES; SERMONETTE
2:00 SIGN OFF

LIGHT MUSIC IN A YOUNG MOOD 9 PM
TILL 2:00 A.M.
2:00 SIGN OFF

POP MUSIC
8:30 NIGHT SHIFT 9 PM
CLEM COOPER TIL 12 MIDNIGHT
12:00 SIGN OFF
NEWS ON THE HOUR

6:00 EVENING REPORT
6:15 *STEREO SHOWTIME
7:00 *STEREO 9 PM
CONCERT HALL 11:00 PUBLIC AFFAIRS
11:30 SOUND OF JAZZ
2:00 SIGN OFF

6:00 NEWS
6:15 PUBLIC SERVICE
6:30 *STEREO BY STARLIGHT 9 PM
LIGHT MUSIC
10:00 *POP CONCERT
11:00 SIGN OFF
NEWS ON THE HOUR

STANDARD PROGRAMMING MONDAY-FRIDAY

ALL STEREO
7:00 CONNECTI-
CUT SERENADE
MUSIC, NEWS
9:05 DAY OF
—12 NOON—
THE WEEK
1:05 STRINGS
AND STEREO
2:05 STEREO
SPECTRUM
5:05 SPOTLIGHT

6:00 OLD COMMUTER DON RUSSELL
MUSIC, NEWS, WEATHER
10:00 BREAKFAST CLUB FEATURES
11:00 MORNING MUSICAL (TU, W, TH)
FOR WOMEN ONLY (M, F); GOOD
COOKING (TH)
12 NOON
13:00 PAUL HARVEY NEWS/ALMANAC
12:20 LUNCHEON MUSIC FAVORITES
1:00 POINT OF VIEW (TU, W, TH)
2:00 L STEN
3:00 JAY JOHNSON
4:00 SHOW TIME
5:00 RADIO SHOW NEWS, WEATHER

5:55 SOMETHING TO THINK ABOUT
NEWS, WEATHER
6:15 WAKE UP NEWS, WEATHER
9:00 AL TURK WITH NEW "POPS"
11:00 MEMORIES IN MELODY JACK
ELLSWORTH AND RECORDINGS OF
THE 30'S AND 40'S
12 NOON
12:00 NEWS
12:30 LUNCHEON MUSICAL
1:00 RECORD REVIEW
2:30 SHOWTIME MUSIC FROM BROAD-
WAY
3:00 RECORD REVIEW
5:00 MOODS IN MUSIC

8:15 MUSIC
8:30 JOEY ADAMS SHOW
9:00 JAN BART SHOW
9:15 NEWS
9:30 RABBI TALK
10:00 ART RAYMOND
11:30 ANGLA-JEWISH
12 NOON
12:00 RUTH JACOBS SHOW
1:00 YIDDISH
1:30 ITALIAN
4:30 GERMAN

6:30 COMMUTER'S TIME
10:00 COFFEE BREAK
11:00 MUSIC MAKERS
—12 NOON—
12:00 NEWS ROUNDUP
12:15 SOUND OF LONG
ISLAND
1:45 VIVIAN LAWRENCE
ON LONG ISLAND
2:00 SOUND OF LONG
ISLAND CONTD
2:35 TAKE TEN
2:45 REPORT FROM WASH-
INGTON (M); HOME AND
GARDEN (TU); NEW OC-
CUPATIONS (W); COM-
MUNITY SHOWCASE (TH);
LIGHT OF ISREAL (F)
3:00 MUSICAL PLAYHOUSE
3:35 COUNTRY CLUB
4:25 MARCH OF THE
MARKET

6:05 THE MORNING
SHOW WITH
JACK ELLERY
7:45 BREAKFAST
NEWS
8:45 MORNING SHOW
CONTINUED
10:05 MUSIC FROM
THE PENTHOUSE
WITH MIKE JAY
—12 NOON—
12:00 NEWS AT
NOON
12:20 A MAN AND
HIS WORLD WITH
JACK ELLERY
2:00 ON THE
SUNNYSIDE WITH
MIKE JAY
4:05 THE RARITAN
ROAD SHOW WITH
JOHN TAYLOR

WBMI 95.7	WSTC 96.7	WALK 97.5	WEVD 97.9	WHLI 98.3	WCTC 98.8	6pm
--------------	--------------	--------------	--------------	--------------	--------------	-----

6:05 DESIGNS
FOR DINING
DINNER MUSIC
7:05 SHOWCASE
OF SOUND
8:30 STEREO
SHENANIGANS
—9 PM—
9:05 DONOVAN ON
BROADWAY (M, W)
THREE-QUARTER
TIME (TU, TH);
BLUE IS THE
NIGHT (F)
10:31 SERENADE
FOR STRINGS
11:05 THE QUIET
HOURS
1:00 SIGN OFF

6:00 NEWS MARKETS
6:15 PAUL HARVEY
6:40 ALEX DRIER
7:00 BROADWAY OUT (M, W); LIGHT
CLASSICS (TU); CANDLELIGHT (TH)
MUSIC OF THE AMERICAS (F)
8:00 O' BROADWAY (M); CONCERT
STAGE (TU); ARTISTRY IN FM (W);
OPERA IN FM (TH)
—9 PM—
COUNTRY FOLK (F)
10:00 MUSICAL THEATRE (M); CLAS-
SIC EVERGREENS (TU); OPERATIC
FAVORITES (W); OPERA HIGHLIGHT
(TH); JAZZ IDOLS (F)
12:00 DEVOTIONS

6:00 NEWS
6:15 SINGING STRINGS
7:00 CANDLELIGHT CONCERT MUSIC
8:00 MANTOVANI (M); STANLEY
BLACK (TU); KOSTELANETZ (W);
MORTON GOULD (TH); FRANK
CHACKSFIELD (FRI)
—9 PM—
9:00 CURTAIN CALLS BROADWAY
AND HOLLYWOOD THEMES
SELLING, TRADES
10:00 MASTERWORKS OF MUSIC
12:00 NEWS
12:05 SMOOTHLY INSTRUMENTAL
2:00 SIGN OFF

6:30 MUSIC HIGHLIGHTS* DAVID
NILES
8:00 VICTOR REISEL (TU); WILLIAM
BOOTH (W); FORUM (TH); SERVICES
(F)
8:30 BUSINESS (M); KALEIDOSCOPE
(TU); BOOKS (W); FORUM (TH)
—9 PM—
9:00 STANDPOINT (M); PSYCHOLOGY
(TU); OMBUDSMAN (W); ARTS (TH);
FRIDAY NIGHT SPECIAL (F)
9:30 SPOTLIGHT (M); REPORT ON
FREEDOM (TU); LABOR NEWS CON-
FERENCE (W); SCIENCE/DIALOGUE
(TH)
10:00 WORLD TOMORROW
10:30 INTERNATIONAL MUSIC
11:00 SYMPHONY SID SHOW (EXCEPT
MON) TILL 3 A.M.

6:00 EBB TIDE
6:20 SPORTS SHOW
6:35 EVENING WATCH
7:35 SERENADE
—9 PM—
9:00*CONCERT AT NINE
10:00 JAZZ AT TEN
11:00 SIGN OFF

NEWS ON THE
HALF HOUR

6:00 SIX O'CLOCK
REPORT
6:30 RARITAN ROAD
SHOW WITH
JOHN TAYLOR
7:05 EVENING
SPORTS NEWS
7:15 NIGHTSONG
WITH BOB HUSE
—9 PM—
CONTINUED
10:05 NIGHTTIME
(M, TU, TH, F); ON
CALL WITH BOB
BREEN (WED)
10:45 NEWS
11:00 NIGHTTIME
(M, TU, TH, F);
ON CALL WITH
BOB BREEN (W)
12:05 THE MID-
NIGHT MUSE
JAZZ (M-TH);
FOLK MUSIC
WITH BOB
BREEN (FRI)
2:05 SIGN OFF

NEWS ON
THE HOUR

5:45 LIFELINE
6:05 DON VALLE SHOW
10:00 JAY MANNING
SHOW
—12 NOON—
12:00 LUNCHEON WITH
VALLE
1:00 GIL FOX/NEWS
1:45 SPOTLIGHT
WOMEN
2:00 GIL FOX CONTD
4:00 GARY ALEXAN-
DER SHOW

5:00 RAY GARCIA SHOW
7:30 RELIGION
8:00 VENEZUELA (M); VOICES OF
SPAIN (TU); REVIVAL ECHOES (W, TH)
GREEK HOUR (F)
8:30 MEMORIES OF CUBA (TU); CHURCH
(W, TH)
9:00 TIMES SQUARE MISSION
9:30 CHURCH (M); MAGGIE
MC GEE'S IRELAND (T, W, TH, FRI)
10:00 THOMAS SALOMONE
11:00 NERI AND DEI
11:30 SAL PALMIERI
—12:00 NOON—
12:00 NINO D'AUZIA
1:30 ANTHONY PIRANO
2:00 SAL PALMIERI
2:30 MIMI CECINI
3:00 CHANGING CITY
3:30 SPANISH PROGRAMS
4:00 RADIO ITALIA
4:30 JOSEPH VALENTE
5:00 MARIO SESSA
5:30 ARABESQUE

6:00 THE STAN
MARTIN SHOW
NEWS, MUSIC,
WEATHER, BIRTH-
DAYS, LOCAL FEAT-
URES
9:30 DIAL-A-DEAL
PHONE-IN BUYING
SELLING, TRADES
10:00 MIKE SWEEN-
EY MUSIC, NEWS,
MOVIE SCHEDULES
LOCAL FEATURES
—12 NOON—
12:00 COMPREHEN-
SIVE NEWS
12:15 ED ZEIDNER
POPULAR MUSIC,
NEWS, FEATURES
3:00 MIKE SWEEN-
EY MUSIC, TRAFF-
IC, NEWS, STOCKS

6:30 WAKE UP TO MUSIC.
LOCAL NEWS, WEATHER,
SPORTS
9:05 MID-MORNING
SERENADE
10:05 SCHOOL NEWS
10:35 MARKETS
—12 NOON—
12:00 MARKETS, NEWS
12:15 FARM FACTS AND
NATURE NOTES
12:20 AFTERNOON MUSIC
1:05 EGG MARKET REPORT
4:05 CLOSING STOCK
REPORT
4:55 FORT MONMOUTH AND
CIVIL SERVICE NEWS
5:00 NEWS ROUND-UP

6:00 OPERATION EARLY
BIRD KEN HARRIS
MUSIC, NEWS, WEATHER
SPORTS, TIME
10:00 STARS AND
STRINGS
JOHN CAMERON
—12 NOON—
12:00 MIDDAY COMMU-
NIQUE LISTENER
PARTICIPATION,
NEWS
1:00 KEYBOARD
2:00 STUDIO IN THE
ROUND
5:00 ENCORE

5:00 DON BAILEY
SHOW POP,
OLDIES AND

—12 NOON—
12:00 ED
WILLIAMS
JAZZ SE-
LECTIONS
4:00 BILLY
TAYLOR

WFAS 103.9	WHBI 105.9	WPAC 106.1	WHTG 106.3	WVIP 106.3	WRNW 107.1	WLIB 107.5	6pm
---------------	---------------	---------------	---------------	---------------	---------------	---------------	-----

CONTD
8:00 JIM MORTON
—9 PM—
SHOW/NEWS
12:00 MUSIC AFTER
HOURS JERRY
TANO/TILL
5:45 AM

6:15 BROADWAY/HOLLYWOOD NEWS
6:30 RACING RESULTS
7:05 MUSIC OF BRAZIL
7:30 GREEK (M, W, TH, F); ARAB (TU)
8:30 BULGARIAN (M); ARMENIAN (W);
SEPHARDIC HOUR (TH); ROMANIAN
(FRI)
—9 PM—
9:00 DICK "RICARDO" SUGAR SHOW
LATIN AMERICAN MUSIC
12:00 RAY WILSON JAZZ HOUR
1:00 CHAMPAGNE GALLERY
2:00 RAY WILSON (CONT.)
3:00 HAPPY HOLIDAY SHOW
4:00 SPANISH MELODIES OF
RCDRIQUEZ

6:00 COMPREHEN-
SIVE NEWS
6:15 DAN KORSHIN
POPULAR MUSIC,
LOCAL FEATURES,
NEWS, CONTESTS

6:05 MARKET SUMMARY
6:10 DINNER HOUR
7:05 SPORTS ROUND-UP
7:15 MUSIC TILL MID-
NIGHT LIGHT EVENING
MUSIC FOR YOUR
—9 PM—
LISTENING ENJOYMENT
12:00 SIGN OFF
NEWS AND WEATHER
EVERY HALF HOUR

6:00 *STUDIO IN THE
ROUND
8:00 MANHATTAN SERE-
NADE
—9 PM—
9:00 *EVENING CON-
CERT
10:00 *MUSIC AFTER
TEN
11:00 NIGHTCAP
12:00 SIGN OFF

UNDEGROUND
CONTEMPORARY
SOUNDS
11:00 SIGN OFF

JAZZ SE-
LEC-
TIONS
7:30 DEL
SHIELDS
—9 PM—
JAZZ SE-
LEC-
TIONS

STANDARD PROGRAMMING SATURDAY-SUNDAY

12 NOON
12:00 CHANNEL 201(SAT); SUNDAY SHOW(SUN)
2:30 FOLKFEST(SAT)
5:00 WCWP HIGH-LIGHT(SUN)
5:30 BEACON(SUN)

12 NOON
12:00 SPOTLITE(SAT); BROADWAY(SUN)
12:15 JEFF SCOTT(SAT)
1:00 MARY SCHWARTZ(SUN)
2:00 UN/PROFILE(SAT)
2:30 KEN DICKMAN(SAT); NONESUCH(SUN)
3:00 MUSIC(SAT); OP-ERA(SUNDAY)

WSOU IS ON ITS SUMMER BROADCASTING SCHEDULE

STEREO AS INDICATED*

6:00 CAROUSEL(SAT); TODAY IS SUNDAY
6:35 BOOK REVIEW(SUN)
7:00 REPORT FROM RUTGERS(SUN)
7:35 MESSAGE OF ISRAEL(SUN)
8:00 THE ADDED YEARS(SUN)
8:35 SCIENCE REPORT(SUN)
9:00 CAROUSEL(SUN)
10:00 GASLIGHT
12 NOON
PREVUES
3:00 *LIMELIGHT
4:00 *LIMELIGHT

6:00 OPERATION EARLY BIRD JEFFREY SPRUNG
7:45 CHRISTOPHERS(SUN)
8:00 NEWS
8:30 CHURCH NEWS(SUN)
8:30 CHRISTIAN SCIENCE HOUR(SUN)
8:45 GOSPEL SINGERS(SUN)
9:00 JUDAISM(SUN)
9:30 OPINION(SUN)
10:00 AT THE U.N.(SAT)
PAUL SCOTT TEENAGE INTERVIEWS(SUN)
10:15 STUDIO IN THE ROUND(SUN)
10:30 WESTCHESTER(SUN)
10:35 EDUCATION(SUN)
11:00 ACCENT ON YOUTH MUSIC(SAT); ITALIAN-ISSIMA(SUN)
12 NOON
12:00 CONTINENTAL SHOW
2:00 STUDIO IN THE ROUND MUSIC
2:30 POLKA PARTY(SUN)
4:30 STUDIO CONTD
5:00 NEWS(SAT)
5:15 STUDIO CONTD(SAT)

6:00 ALARM CLOCK CLUB(SAT); SOUNDS FOR SUNDAY(SUN)
8:20 POINT OF LAW(SAT)
9:15 GOSPEL TRAIN(SAT)
9:30 BOY SCOUT NEWS(SAT)
11:15 HOW NEW JERSEY GROWS(SUN)
11:30 THE AGONY OF THE CITY(SUN)
12 NOON
12:15 COUNTRY CONCERT(SAT); KEYBOARD MELODIES(SUN)
2:15 BROADWAY MATINEE(SAT); SOUNDS FOR SUNDAY(SUN)
4:15 NEW JERSEY REPORT(SUN)
5:15 STRENGTH OF FAITH(SUN)

6:00 MORNING CLOCK(SAT); WORSHIP(SUN)
7:00 CHURCH/SUNDAY SCHOOL(SUN)
8:00 KID'S CLUB(SAT); CHURCH
9:00 BIBLE YOUTH(SAT); TEMPLE
9:30 CHRISTIAN HOME(SAT); PRELUDE TO WORSHIP(SUN)
10:00 PRAYERTIME(SAT)
11:00 CALVARY BAPTIST(SUN)
11:30 COLLEGE CORRIDORS(SAT)
12 NOON
12:00 NEWS(SAT); SERENADE(SUN)
12:15 CHAPEL(SAT); QUIETTIME
12:30 SONGTIME(SAT)
1:00 MUSIC(SAT); ISRAEL(SUN)
1:30 BILLY GRAHAM(SUN)
2:00 SERENADE(SUN)
3:30 LUTHERAN HOUR(SUN)
4:00 BACK TO GOD HOUR(SUN)
4:30 REVIVAL
5:10 REFLECTIONS(SUN)
5:20 NEW TESTAMENT(SUN)
5:30 THAT THEY MIGHT SEE(SAT); SHOWERS OF BLESSING(SUN)
5:45 CHRISTIANITY IN ACTION(SUN)

6pm	WCWP 89.1	WVHC 88.7	WSOU 89.5	WPAT 93.1	WVOX 93.5	WJLK 94.3	WFME 94.7
6:00 SPOTLITE ON L.I.(SAT); OPERAPHILE(SUN) 6:30 STEVE NEVARD ON SPORTS(SAT) 7:00 SATURDAY NITE WITH JOHN KARL(SAT) 8:00 THE CLASSICS(SUN) 9 PM 12:00 SIGN OFF	6:00 BLUE AND THE WHITE 6:15 THE DIARY OF SAMUEL PEPPYS(SAT); BBC WORLD REPORT(SUN) 6:30 THE SWING YEARS(SAT); DAVE LAMBLE AND MUSIC(SUN) 8:00 SIGN OFF	AND WILL BE OFF THE AIR ON SATURDAYS AND SUNDAYS.	CONTINUED 7:00 GASLIGHT REVUE 8:00 *GASLIGHT REVUE 9 PM 10:00 GASLIGHT REVUE 12:00 THE NIGHT SHOW TIL 6 AM NEWS ON THE HALF HOUR	6:00 SIGN OFF	6:00 NEWS: SPORTS 6:15 MONMOUTH PARK FEATURE RACE(SAT) 6:35 DINNER MUSIC(SUN) 7:15 AS IS SEE IT COMMENTARY 7:45 PRAYERS OF THE ROSARY(SAT); WHOLE-SOME FAMILY LIVING(SUN) 8:15 CHURCH SERVICE(SUN) 9 PM 9:15 REPORT FROM RUTGERS UNIVERSITY(SUN) 12:00 SIGN OFF NEWS AND WEATHER EVERY HALF HOUR	6:00 WORLD WIDE RADIO 6:20 WEEKEND CALENDAR(SAT); FAITH IN ACTION(SUN) 6:30 EVENSONG 7:00 TOM SKINNER(SAT); CHURCH OF THE MONTH(SUN) 7:30 WORD OF LIFE(SAT) 8:00 UNSHACKLED 8:30 CAMPUS CRUSADE(SAT); EVANGELISM(SUN) 9 PM 9:00 ECHOES(SAT); DR. BARNHOUSE(SUN) 9:30 SONGS OF SPLENDOR(SAT) 10:00 BIBLE ANSWER MAN(SAT); SAM HART(SUN) 10:30 REVIVALTIME(SUN) 11:00 LIGHT AND LIFE(SUN) 11:30 SIMPSON SONGFEST 12:00 NIGHTWATCH ED LEWIS TILL 6:00 A.M.	

6:30 HYMNS/SERMON(SAT); ALMA WHITE
7:15 SUNRISE SERVICE
7:45 NEWS FOR YOU(SAT); HYMNS(SUN)
8:00 GOSPEL IN SERMON AND SONG
8:30 COMMUNITY GOSPEL(SAT); HARRY WHITE ORCH(SUN)
9:00 *MORNING CONCERT
10:00 LIGHT MUSIC
11:00 COLLEGE/SEMI-MARY(SAT); PIL-LAR OF FIRE(SUN)
12 NOON
12:00 MUSIC FOR MEDITATION
1:00 HYMN TIME(SAT); *CONCERT(SUN)
1:30 THE BAPTIST HOUR(SAT)
2:00 *CONCERT(SAT); LIGHT MUSIC(SUN)
3:00 MUSICAL(SAT); SERVICE(SUN)
4:00 NEWS(SAT); MUSIC
5:00 MUSIC(SAT); NUCC(SUN)
5:30 DEVOTIONS(SAT); COLLEGE CONCERT

ALL STEREO
6:00 HAL MITCHELL LATEST HITS
9:00 SEBASTIAN STONE
12:00 TONY TAYLOR
4:00 JIM O'BRIAN

5:30 DEVOTIONS(SAT)
5:45 TOP OF THE MORNING(SAT)
7:30 SERMONETTE(SUN)
8:30 BIBLE(SUN)
9:00 FAITH(SUN)
10:05 JOURNEY INTO MELODY
10:30 VIEWPOINT(SUN)
11:00 THIS IS NY STATE(SUN)
12 NOON
12:00 NEWS
12:10 BANDSTAND(SUN)
12:15 MEDLEY(SAT)
12:35 ARTIST(SUN)
1:00 NEWS
1:15 BANDSTAND(SAT)
MUSICAL(SUN)
1:30 EVERETT SHOW(SAT); MUSIC(SUN)
3:05 MATINEE(SAT); WHAT'S THE ISSUE(SUN)
3:30 AVE MARIA(SUN)
4:05 DESIGNS FOR LISTENING

STEREO AS INDICATED*

6:00 *THE YOUNG SOUND MUSIC OF BROADWAY WITH LEE JORDAN/SHOW TUNES AND INTERVIEWS
*YOUNG SOUND CONTINUED(SAT)
1:00 *THE

6:00 GOOD MORNING, LONG ISLAND BOB DORIAN(SAT); SUNRISE SERENADE(SUN)
7:00 PROTESTANT HOUR(SUN)
7:30 NATIONAL GUARD(SUN)
7:45 ISRAEL(SUN)
8:00 LISTEN TO VOICES(SUN)
8:30 LAWRENCE WELK SHOW(SUN)
9:45 BIBLE(SUN)
1:00 ITALIAN JOE ROTOLO(SUN)
2:10 GERMAN ILSE WAGNER(SAT)
12 NOON
3:00 MEMORY LANE TONY JAMES(SAT)
00 ENCORE JAN ANDERSON(SAT); IRISH BOB GLEASON(SUN)
00 SATURDAY DISK 0 TEK MIKE JEFFRIES POLKA EDDIE DEE BOB WASHINGTON SHOW(SUN)

ALL STEREO
7:00 SATURDAY IN STEREO
10:00 CLASSICS IN MUSIC(SUN)
11:00 PRINCETON CHAPEL(SUN)
12 NOON
THREE IN STEREO(SAT); CLASSICS IN MUSIC(SUN)
1:00 *OPERA FOR A SUNDAY AFTERNOON
3:00 SWING STREET(SAT)
5:00 FOLKSING(SUN)

STEREO AS INDICATED*

6:00 ENGINEER'S SPECIAL(SAT)
6:30 POLKA JAMBOREE(SAT)
7:00 WAKE UP TO MUSIC AL SHIELDS(SAT); SERENADE(SUN)
8:05 COUNCIL OF CHURCHES(SUN)
8:20 SERENADE CONTD(SUN)
9:30 CHRISTIAN SCIENCE(SUN)
10:15 JAMBOREE BOB MACKEL(SAT)
12 NOON
12:00 NEWS(SAT); CONGRESSMAN PIKE(SUN)
12:30 SERENADE(SAT); STARS OF THE WEEK(SUN)
12:45 COUNTRY SPOTLIGHT(SUN)
1:05 COUNTY EXECUTIVE(SUN)
1:20 MUSIC(SUN)
1:30 FIREMAN'S ASSOCIATION(SUN)
1:45 MUSIC CONTD(SUN)
2:00 POLKA JAMBOREE TOM DEBSKI
2:30 SOUND SPECTACULAR(SAT)
4:00 SOUND SPECTACULAR(SUN)
4:15 SOUTH HAMPTON COLLEGE(SUN)
4:20 SOUND SPECTACULAR(SUN)

6pm	WOR 98.7	WAWZ 99.1	WJZZ 99.9	WLNA 100.7	WCBS 101.1	WBAB 102.3	WPRB 103.3	WHRF 103.9
O'BRIAN (CONT'D) 7:00 BOB ELLIOT 9 PM ELLIOT (CONT'D) 12:00 STEVE CLARK TILL 6 AM	6:00 PILLAR OF FIRE(SAT); CONCERT 6:15 SUNDAY SCHOOL PREVIEW(SAT) 6:30 HYMNS 6:45 YOUR STORY HOUR(SAT) 7:00 HYMNS(SAT); PIL-LAR OF FIRE(SUN) 7:30 SIGN OFF(SAT) 8:00 MUSIC FOR MEDITATION(SUN) 8:30 SIGN OFF(SUN)	6:00 STEREO OPERA TWO COMPLETE 9 PM OPERAS SIGN OFF AT CONCLUSION OF SECOND OPERA	6:00 NEWS 6:15 EVENING MEDLEY(SAT); CLASS(SUN) 6:30 YOUR WORLD OF SONG MELODIES 8:05 MELODY TIME 9 PM 9:00 NEWS; MELODY TIME CONTD. 10:05 MUSIC TIL MID-NIGHT NIGHT MUSIC 12:00 NEWS 12:05 AFTER HOURS 12:55 HEADLINES; SERMONETTE; SIGN OFF(SUN) 1:55 HEADLINES; SERMONETTE; SIGN OFF(SAT)	YOUNG SOUND 9 PM LIGHT MUSIC TILL 2:00 AM 2:00 SIGN OFF	DISK 0 TEK CONTD 00 THE GROOVEYARD 9 PM BOB WASHINGTON(SAT) 1:00 SIGN OFF NEWS ON THE HOUR	6:00 EVENING REPORT(SAT) 6:15 *STEREO SHOWTIME(SAT) 7:00 ROD ST. JOHN(SAT) 8:00 COUNTRY AND WESTERN PRESENTS(SUN) 9 PM 10:00 SOUL SOUNDS(SUN) 11:00 JAZZ AFTER HOURS(SAT) 12:00 MASTERS IN JAZZ(SUN) 2:00 SIGN OFF	6:00 NEWS 6:15 *PUBLIC SERVICE 6:30 *STEREO BY STARLIGHT(SUN) LIGHT MUSIC 9 PM 9:00 CLASSICAL HOUR(SUN) 10:00 POP CONCERT 11:00 SIGN OFF NEWS ON THE HOUR	

YOUR FM DIAL. * Indicates some/all stereo.

FM 77

WCWP 88.1	WBGO 88.3	WVHC 88.7	WSOU 89.5	WKCR 89.9	WFUV 90.7	WFMU 91.1	WNYE 91.5	WHOM 92.3	WLIR 92.7	WPAT 93.1	WVOX 93.5	WNYC 93.9	WJLK 94.3	WGSM 94.3	WFME 94.7	WABC 95.5	WQXR 96.3	WSTC 96.7	WNBC 97.1	WALK 97.5	WEVD 97.9	WHLI 98.3	WLAD 98.3	WCTC 98.3
-----------	-----------	-----------	-----------	-----------	-----------	-----------	-----------	-----------	-----------	-----------	-----------	-----------	-----------	-----------	-----------	-----------	-----------	-----------	-----------	-----------	-----------	-----------	-----------	-----------

<p>ALL STEREO 7:00 AM SAT PHIL HAMEL (SAT) 9:05 DIMENSION NEIL OFFEN (SAT) 11:30 RELIGIOUS SCIENCE DR. RAYMOND C. BRAKER (SUN) 12 NOON 12:05 NEW SOUNDS (SAT); LITHUANIAN- AMERICAN HOUR (SUN) 1:05 HOE DOWN HANK THOMPSON (SUN) 2:05 SPECTRUM 5:05 SPOTLIGHT (SAT); SOUND- TRACK (SUN)</p>	<p>6:00 DEVOTIONS 6:05 SATURDAY SOUND (SAT); SUNDAY SOUND (SUN) 9:15 CHRISTIAN SCIENCE 9:30 MEN AND MOLECULES (SAT); MELODY (SUN) 10:00 POLKA TIME (SAT) 10:30 NEGRO COLLEGE CHOIR (SAT) 11:30 REVEREND, PRIEST, AND RABBI (SUN) 12 NOON 12:00 PAUL HARVEY (SAT); AS WE SEE IT (SUN); NEWS 1:00 SATURDAY SOUND; ITALIAN MELODIES (SUN) 1:30 STORIES FOR LITTLE CHILD- REN (SAT) 2:00 SATURDAY SOUND; HOUR OF DECISION (SUN) 2:30 ISSUES AND ANSWERS (SAT) 3:00 SUNDAY CONCERT (SUN) 3:30 MILTON CROSS (SUN) 4:00 VOICES IN THE HEADLINES (SUN) 5:00 ANGELUS HOUR (SUN) 5:30 THE WITNESS (SUN) 6:35 SUNDAY SERENADE (SUN) 5:55 HEADLINES</p>	<p>6:00 SOMETHING TO THINK ABOUT (SAT); MUSIC (SUN) 6:10 WAKE UP! (SAT) 7:00 LIVING STRINGS (SUN) 7:30 MUSIC CONTO (SUN) 8:15 RELIGIOUS NEWS (SUN) 8:30 DEVOTION (SUN) 9:00 WHAT'S COOKING (SAT); PAUL WESTON (SUN) 9:30 WALTZ TIME 10:00 WARNER SCHREINER RECORD REVIEW (SAT); MUSIC (SUN) 11:00 BIG BANDS (SAT) 12 NOON 12:00 NEWS 12:15 LUNCHEON MUSICALE (SAT) 12:30 HAT KING COLE (SUN) 1:00 SPACE STORY (SAT); FRANK SINATRA (SUN) 1:30 ROGER WILLIAMS 2:00 TRAVEL IN SONG 2:15 VOICES (SUN) 2:30 SHOWTIME (SAT) 3:00 RECORD REVIEW (SAT); MASTERWORKS (SUN) 4:00 SUNDAY WITH YOU 4:30 MUSIC (SUN) 5:00 MOODS IN MUSIC (SAT)</p>	<p>6:30 COMMUTER'S TIME (SAT) 6:55 SIGN ON (SUN) 7:00 SONGS OF FAITH (SUN) 7:35 LIFT UP THY VOICE (SUN) 8:00 CHAPEL (SUN) 8:35 DEVOTION (SUN) 9:00 RENDEZVOUS WITH ROMANCE (SUN) 9:35 STORY HOUR (SUN) 10:00 CONSUMER FORUM (SAT); COFFEE BREAK (SUN) 10:15 COFFEE BREAK (SAT) 10:55 DEFENSE (SUN) 11:00 MUSIC MAKERS 12 NOON 12:00 NEWS ROUNDDUP 12:15 SOUND OF LONG ISLAND 1:00 COUNTY EXEC. (SUN) 1:45 ALBANY (SAT) 3:00 MUSICAL PLAYHOUSE 3:45 SALVE REGINA (SUN) 3:55 COUNTRY CLUB (SAT) 4:15 COUNTRY CLUB (SUN)</p>	<p>6:05 MORNING SHOW JACK ELLERY (SAT); SUNDAY CAROUSEL JACK SHREVE 10:05 SATURDAY SUNNYSIDE WITH MIKE JAY 10:45 HOME AND GARDEN (SUN) 11:05 CHURCH SERVICE (SUN) 12 NOON 12:00 NEWS 12:15 SATURDAY SUNNYSIDE; HUN- GARIAN MELODY TIME (SUN) 1:30 POLKA (SUN) 2:05 SATURDAY SPECIAL WITH JOHN TAYLOR 2:30 SUNDAY CAROUSEL 4:05 THEATER HOUR JACK ELLERY (SUN) 5:00 FILIPPO NERI ITALIAN HOUR (SUN)</p>
---	---	--	---	--

WBMI 95.7	WSTC 96.7	WALK 97.5	WEVD 97.9	WHLI 98.3	WCTC 98.3	6pm
-----------	-----------	-----------	-----------	-----------	-----------	-----

<p>6:05 DESIGNS FOR DINING 7:05 JAZZ (SAT) MALONEY'S BARBERSHCP (SUN) 7:30 MUSICAL JOURNEY (SUN) 8:05 POPS CONCERT (SUN) 9 PM 9:05 DANCE PARTY (SUN) 10:00 SUNDAY EVENING CONCERT 12:00 SIGN OFF (SUN) 1:00 SIGN OFF (SAT)</p>	<p>6:00 SATURDAY SOUND (SAT); WEEK IN WASHINGTON (SUN) 6:40 TOM HARMON SPORTS 7:00 OVERSEAS ASSIGNMENT (SUN) 7:15 DANCE PARTY (SAT); REPORT FROM LONDON (SUN) 7:30 MAN ON THE GO ALEX DRIER (SUN) 7:40 NASA SPACE REPORT (SUN) 8:00 CONCERT HALL CLASSICAL MUSIC (SUN) 10:00 PILGRIMAGE (SUN) 10:30 REVIVAL TIME (SUN) 11:15 QUINCY HOWE (SUN) 11:30 FREEDOM SINGS 12:00 DEVOTIONS; SIGN OFF</p>	<p>6:00 NEWS 6:15 SINGING STRINGS (SAT) MELACHRINO STRINGS (SUN) 7:00 CANDLELIGHT CONCERT 8:00 PERCY FAITH (SAT); SAY IT WITH MUSIC (SUN) 9 PM 9:00 DAVID ROSE (SAT); MASTER- WORKS FROM FRANCE (SUN) 9:30 INVITATION TO THE WALTZ (SUN) 10:00 SATURDAY NIGHT DANCE PARTY (SAT); OPERA (SUN) 12:00 NEWS (SAT); SMOOTHLY IN- STRUMENTAL (SUN) 12:15 JAZZ AT MIDNIGHT JOE TRAVIS (SAT) 1:55 SIGN OFF</p>	<p>6:00 GERMAN (SAT) 7:00 GREEK (SUN) 8:00 YIDDISH (SAT) 8:00 POLISH (SUN) 9 PM 9:00 IRISH MEMORIES (SUN) 10:00 WORLD TOMORROW (SAT, SUN) 10:30 MUSIC (SAT) 11:00 SYMPHONY SID (SAT) TIL 3 AM 12:00 SYMPHONY SID (SUN) TIL 3 AM</p>	<p>6:00 EBB TIDE 6:20 SPORTS SHOW 6:35 EVENING WATCH 7:35 SERENADE 9 PM 9:00 *CONCERT AT NINE 10:00 JAZZ AT TEN 11:00 SIGN OFF NEWS ON THE HALF HOUR</p>	<p>6:00 NEWS (SAT) 6:15 SATURDAY SPECIAL CONTO 6:30 SUNDAY CAR- OUSEL CONTO 7:05 SPORTS NEWS 7:15 SATURDAY HOUSE PARTY WITH LARRY HARMON/ ROCK; CAROUSEL 8:05 GOSPEL (SUN) 8:30 HOUR OF THE CRUCIFIED (SUN) 9 PM 9:05 SONGS OF PRAISE (SUN) 9:15 *CONCERT IN HI FI (SUN) 9:45 NEWS 11:00 SUNDAY NIGHT STARDUST 12:05 THE MID- NIGHT MUSE FOLK WITH LARRY LARSON (SAT) 2:05 SIGN OFF NEWS ON THE HOUR</p>
--	--	--	---	--	--

STANDARD PROGRAMMING SATURDAY-SUNDAY

<p>5:45 LIFELINE (SAT) 6:05 DON VALLE (SAT) 7:15 BIBLE (SUN) 8:00 CHURCH (SUN) 9:00 GOOD NEWS HOUR (SUN) 9:30 LAYMAN (SUN) 10:00 BLUE CROSS (SAT); CHURCH (SUN) 10:05 JAY MANNING SHOW (SAT) 10:30 WOMEN'S PAGE (SUN) 11:00 CHURCH (SUN) 12 NOON 12:00 GARY ALEXAN- DER (SUN) 2:00 JIM MORTON SHOW</p>	<p>5:00 CHURCHES 7:45 HEBREW CHRISTIAN HOUR (SAT) 8:00 ALBANIAN (SAT); CHURCHES (SUN) 8:30 NORWEGIAN (SAT) 9:00 UKRAINIAN (SAT); LITHUANIAN (SUN) 9:30 POLISH (SAT) 10:00 ITALIAN (SAT); POLISH POLKAS (SUN) 11:00 CHURCH (SUN) 12 NOON 12:00 ECHOES OF ITALY (SAT); HUNGARIAN (SUN) 2:00 HUNGARIAN (SAT); POLISH BELLS (SUN) 3:00 GREEK 3:00 TURKISH (SAT); VOICE OF PORTUGAL (SUN)</p>	<p>NO PROGRAMMING ON SUNDAY 6:00 STAN MAR- TIN NEWS, MUSIC, LOCAL FEATURES, BIRTHDAY AN- NOUNCEMENTS, WEATHER 9:30 DIAL-A-DEAL PHONE-IN DEALS, TRADES, SELLING 10:00 MIKE SWEEN- EY MUSIC, NEWS, LOCAL FEATURES, MOVIE TIMETABLE 12 NOON 12:00 COMPREHEN- SIVE NEWS 12:15 ED ZEIDNER POPULAR MUSIC, LOCAL FEATURES, NEWS 3:00 MIKE SWEEN- EY MUSIC, NEWS, TRAFFIC, STOCK REPORTS, WEATH- ER, SPORTS</p>	<p>6:30 WAKE UP TO MUSIC (SAT); TALKING BIBLE (SUN) 7:15 RUTGERS REPORT ON WORLD AFFAIRS (SUN) 7:35 VIEW POINT (SUN) 8:05 TAKE A GIANT STEP (SUN) 8:45 MEN AND MOLECULES (SUN) 9:05 UN PERSPECTIVE (SUN) 9:35 WEEKEND MUSIC 10:05 SATURDAY SHOWTIME (SAT) 12 NOON 12:00 NOON ROUNDDUP 12:05 SENATORIAL REPORT (SUN) 12:15 DINNER HOUR (SUN) 2:05 SUNDAY SHOWTIME 5:00 LOCAL NEWS</p>	<p>6:00 OPERATION EARLY BIRD (SAT) 7:00 CHURCH NEWS (SUN) 7:15 CHILDREN'S CHAPEL (SUN) 7:30 THE GOOD LIFE (SUN) 7:45 BIBLE SPEAKS (SUN) 8:00 CRUCIFIED (SUN) 8:30 CHRISTOPHERS (SUN) 8:45 TABERNACLE 9:00 SERENADE 10:00 STARS AND STRINGS (SAT) 1:00 KEYBOARD 2:00 *BOX OFFICE 4:30 SUNDAY IN SUB- URBIA (SUN) 5:00 ENCORE</p>	<p>5:00 ED JOHNSON (SAT) 12 NOON 12:00 ED WILLIAMS JAZZ SELEC- TIONS 4:00 BILLY TAYLOR</p>
--	--	---	--	---	--

WFAS 103.9	WHBI 105.9	WPAC 106.1	WHTG 106.3	WVIP 106.3	WRNW 107.1	WLIB 107.5	6pm
------------	------------	------------	------------	------------	------------	------------	-----

<p>6:00 TERRY BENNETT'S MADHOUSE (SAT); SPORTS (SUN) 6:30 MUSIC (SUN) 7:30 CATHOLIC HOUR (SUN) 8:00 DIALOGUE '67 (SUN) 8:30 CHILDREN'S LIT- ERATURE/YOUTH AND COMMUNITY (SUN) 9 PM 9:00 WORLD TOMOR- ROW (SUN) 9:30 MUSIC/CHURCH (SUN) 10:30 FAMILY WOR- SHIP (SUN) 10:45 MUSIC (SUN) 11:30 GEORGETOWN U. FORUM (SUN) 12:00 JERRY TANO SHOW (SAT); SIGN OFF (SUN)</p>	<p>6:00 IRISH ROAD (SAT) 6:30 RACING RESULTS (SAT) 6:45 BARBARA BUCHANAN (SAT) 7:00 SLOVAKIAN (SAT); HUNGARIAN (SUN) 8:00 DICK "RICARDO" SUGAR SHOW LATIN AMERICAN MUSIC (SAT); ITALIAN SOCCER SCORES 8:30 IRISH (SUN) 9 PM 9:00 IRISH (SUN, CONTO.) 10:00 ZION TEMPLE (SUN) 10:30 ARGENTINIAN HOUR (SUN) 11:00 VOICE OF ECUADOR (SAT) 11:30 CARIBBEAN RENDEZVOUS/ SOCCER SCORES (SAT); AL BROWNE SHOW (SUN) 12:00 REALROCK (SAT--TILL 5:00 A.M.) 12:30 TEAM BEAT (SUN) 1:00 BROADWAY AFTER DARK (SUN)</p>	<p>6:00 COMPREHEN- SIVE NEWS 6:15 DAN KORSHIN POPULAR MUSIC, CONTESTS, LOCAL FEATURES, NEWS</p>	<p>6:00 DINNER HOUR 7:05 SPORTS ROUNDDUP 7:15 MUSIC TILL MID- NIGHT LIGHT EVENING MUSIC FOR YOUR LIS- 9 PM TENING ENJOYMENT 12:00 SIGN OFF NEWS AND WEATHER EVERY HALF HOUR</p>	<p>6:00 *STUDIO IN THE ROUND 8:00 MANHATTAN SERE- NADE 9 PM 9:00 *EVENING CONCERT 10:00 *MUSIC AFTER TEN 11:00 NIGHTCAP 12:00 SIGN OFF</p>	<p>PERRY COOPER SHOW (SUN) 11:00 SIGN OFF 7:30 DEL SHIELDS 9 PM JAZZ SELEC- TIONS</p>
---	--	---	---	--	---

FM 79	WAWZ 99.1	WBAI 99.5	WJZZ 99.9	WVJN 100.3	WLNA 100.7	WCBS 101.1	WPXI 101.9	WBAB 102.3	WNEW 102.7	WPRB 103.3	WTFM 103.5	WFAS 103.9	WHRF 103.9	WNCN 104.3	WRFM 105.1	WDHA 105.5	WHBI 105.9	WPAC 106.1	WVIP 106.3	WHTG 106.3	WVRV 106.7	WRLB 107.1	WRNW 107.1	WLIB 107.5
-------	-----------	-----------	-----------	------------	------------	------------	------------	------------	------------	------------	------------	------------	------------	------------	------------	------------	------------	------------	------------	------------	------------	------------	------------	------------

NEWPORT FOLK FESTIVAL

July 24, 25, 26, 27, 28

Festival Field
Newport, Rhode Island

Thursday, July 25
8:00 p.m.

"FREE FORM FOLK"

Richie Havens, Eric von Schmidt, Mike Cooney, Jim Kweskin, Fritz Richmond, Bill Keith, Bob Siggins, Geoff and Maria Muldaur, Jim Rooney, Taj Mahal, The Kaleidoscope, Sandy Bull, The Lyman Family, and others.

Friday, July 26
8:00 p.m.

"STREETS AND MOUNTAINS"

The Onward Brass Band, The Bread and Puppet Theater, Arlo Guthrie, Bernice Reagon, Jimmy Collier, Rev. Kirkpatrick, The Pennywhistlers, Ed Young, Libba Cotten, Bess Hawes, and others.

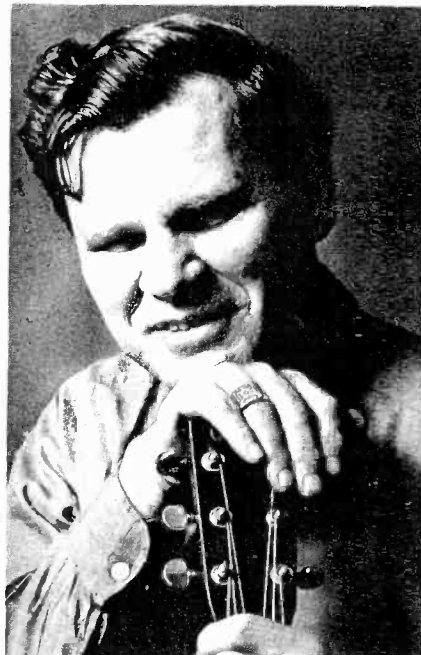


Pete Seeger

Saturday, July 27
8:00 p.m.

"COUNTRY MUSIC FOR CITY FOLKS"

Roy Acuff and The Smokey Mountain Boys, B. B. King, Ralph Stanley and The Clinch Mountain Boys, Jack Elliott, Big Brother and The Holding Company, Ken Threadgill, George Hamilton IV, and others.



Doc Watson

Sunday, July 28
8:00 p.m.

"CLOSING CONCERT AND TRIBUTE TO WOODY GUTHRIE"

Doc Watson, Junior Wells - Buddy Guy Blues Band, Sam Hinton, Janis Ian, Jean Ritchie, Pete Seeger, Arlo Guthrie, Jack Elliott, The Almanac Singers, Millard Lampell, and others.

OTHER EVENTS

Wednesday, July 24
11 a.m. - 4 p.m.

"CHILDREN'S DAY"

11:00 a.m. — Welcoming Concert
12:15 p.m. — Workshops
2:30 p.m. — Closing Concert

Participating artists will include: Sam Hinton, Jim Kweskin, Theo Bikel, Jackie Washington, The Bread and Puppet Theater, Jack Elliott, Bernice Reagon, Taj Mahal, Alannis Obomsawin, Chief Henry Crowdog, and others.

Wednesday, July 24
8:00 p.m.

"SING IN THE EVENING"

Doc Watson, Clint Howard, Fred Price, Ed Young, Fred McDowell, Margot Mayo, Dan Smith, Joe Heaney, Bess Hawes, Libba Cotten, Logan English, and others.

Thursday, July 25
2:00 p.m.

"HOOTENANNY"

Saturday, July 27
8:00 p.m.
(Location To Be Announced)

"BALLADS"

Pete Seeger, Joe Heaney, Lou Killen, Norman Kennedy, Jean Ritchie, Mike Cooney, Dan Smith, Sara Cleveland, Frank Warner, and others.

Sunday, July 28
11:00 a.m.

"RELIGIOUS CONCERT"

Free Admission

Sunday, July 28
2:00 p.m.

"FRESH FACES"

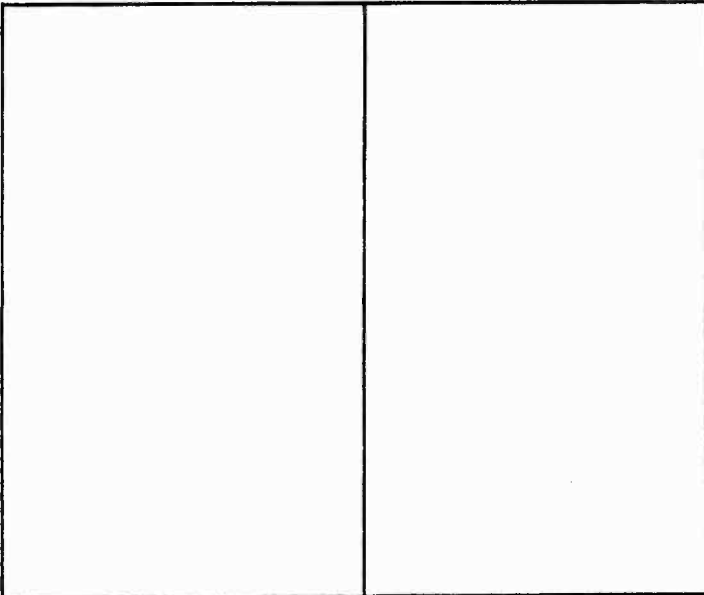
Taj Mahal, The Kaleidoscope, John Hartford, Tim Buckley, Rev. Kirkpatrick, Jimmy Collier, Sean Gardner, Frank Proffit, Jr., and others.
Oscar Brand, M.C.

TRAVEL TO AND FROM NEWPORT

BUS — Direct bus routes to Newport from New York City and Boston and Providence.
CAR — From New York City Interstate 95 North to Interstate 195 East follow signs to Newport or via ferry route Interstate 195 North to R. 1. 138 to Jamestown Bridge and ferry, from Boston Route 24 (off 128) to Fall River and follow Newport signs or Interstate 95 South to Interstate 195 East follow Newport signs.

8/68

Continued



PHIL MORRIS

Then there are music festivals and I won't bother to list them. For any that are important to the rock community I'd suggest checking the Village Voice ads. You'll also find complete club listings there and besides it's a damn good weekly paper.

The only knockout live performance of late was the press party for Earth Opera at the Scene. The reviewers will have to find a new set of superlatives to describe the group. The only thing more fantastic than Earth Opera's Elektra album is Earth Opera live! Their New York debut was the most profound musical, emotional and poetic experience (throw in psychedelic, too, if you know what the term *really* means) that this writer has ever had with any pop group. There just isn't a weak link in the band at all. Each man is in absolute control of his instrument and their stage presentation is near perfect. They also performed some new material that isn't on the first album; notably *The American Eagle Tragedy*, which is the most dramatic anti-war song I've ever heard.

(Correction: In last month's review of Earth Opera's album the parenthesis should contain *excluding* Dylan, not including, as was printed.)

* * * *

I'm happy to report that WFMU (91.1) in East Orange, New Jersey, has gone to a progressive rock format exclusively. They include influences and sources such as folk and eastern music and there are no commercials. Listener-supported Free Form Radio with nothing but groovy music nineteen hours per day now, going to a twenty-four hour operation as of August first. I'm really excited about this development and enjoy listening to the station very much, indeed. Their overall sound is good and tight even though the personnel sound is unprofessional and occasionally sloppy. Of course, they have only begun the present operation about a week ago so I'll give them time to develop. If they can survive financially they could be the best thing to happen to New York FM for pop music fans.

Progressive rock programming is spreading rapidly across the country. Full time stations include two new converts in Boston — WBCN-FM and WHDH-FM. Others are: KSHE-FM,

St. Louis; KSAN-FM and KOIT-FM, San Francisco (the latter is automated, no D.J.'s); KFMK-FM, Houston; WABX-FM, Detroit; WDAS-FM, Philadelphia; KPRI-FM, San Diego; and WNEW-FM, New York. Metromedia Broadcasting also has announced that their stereo FM outlet in Los Angeles, KMET-FM will go progressive rock 24-hours a day. Cities with part time P.R. programmed stations include Chicago; Battle Creek, Michigan; Eau Gallie, Florida; Philadelphia, Dallas, S.F. and L.A. and Cleveland, Ohio, as well as others of which I am not yet aware.

Murray (the K) Kaufman is preparing a four-hour daily P.R. show to be syndicated across the country on both AM & FM. It will debut on CHUM-FM in Toronto and be called "Radio Free Toronto" there and "Radio Free America" in the U.S.

Many thanks to Claude Hall, radio-TV editor of Billboard for the preceding information.

* * * *

As I'm sure you know by now, jazz guitarist Wes Montgomery died in Indianapolis, June 15. There will be no eulogies here. However, in the September issue we'll look at some of his recordings and provide a discography.

Also next month: WOR-FM, the '50's Rock Revival and Blues.

* * * *

JOHNNY CASH — AT FOLSOM PRISON (Columbia CS9639)

This is one of the most authentic records to ever come down the Columbia pike. The live recording is apparently good. What's bad is the playing, the arrangements(?), and Cash's vocal performance. What's amazing is that, although Cash is not at his best, the accompaniment is the worst I have ever heard behind him and he appears to be slightly drunk, it is still a compelling album and looks like it may be one of his biggest sellers. Being a Johnny Cash fan for many years I can attest to the fact that this isn't one of his better records but it does have a certain warmth that studio albums often lack. Cash's empathy for the prisoners is obvious throughout and his liner notes are perceptive and genuine.

The selections here are, for the most part, very good songs, many from Cash's standard repertoire and all are appropriate for the occasion. Some of the songs are cut a few verses short which is aggravating but there are some delightful tunes here like the great country favorite *Dirty Old Egg-Sucking Dog* and a humorous *Flushed From the Bathroom of Your Heart*. He also includes a song written by one of the prisoners of Folsom.

* * * *

JOHN HARTFORD — HOUSING PROJECT (RCA Victor LSP-3998)

This record was something of a disappointment for me. Hartford is a very promising songwriter indeed as evidenced by his *Gentle On My Mind* which you may have heard by Glen Campbell but I'm afraid that most of the songs here aren't nearly up to the quality of *Gentle*. Hartford's vocals are quite pleasing and there's an easy, lilting feeling throughout the record. He also plays banjo which makes it on some tracks but seems out of place and annoying on others.

There are three songs of particular note — *Go Fall Asleep Now, In Like Of*, and *Shiny Rails of Steel* which is easily the best song of the set. When he's good he's very, very good. When he's bad, he's mediocre.

* * * *

Phil Morris



THE BLUES are all around. Maybe not everybody has 'em but they sure are listening. The hottest selling records among new rock fans are either those by blues artists or groups whose rock material is heavily blues influenced. The blues guitarist is the hero of the hour and the endless discussion concerning who is better and which super blues man is abandoning his group is amusingly reminiscent of the high school hot rod custom car moon disc mystique that was dominating conversation ten years ago. And not only is it *in* to know what kind of guitar strings B.B. uses, I mean it's not just acceptance by his peer group the kid is after, it's *real* concern. Concern with the paraphernalia that surrounds the musician in hope some insight into the music will sneak through. Concern with all the technical stuff about guitars and amplifiers and recording techniques and knowing the names of the old blues men who wrote the tunes like collecting baseball cards. And of course, being the first on your block to have the new Cream album carries some status with it like knowing stars' middle names. But even though some get hung up on the surface trappings, in general the blues freaks make it through all the crap right on down to the nitty gritty. They aren't the what-kind-of-toothpaste-does-John-Lennon-use fan magazine type and they know that buried under all the ballyhoo is the music. This fact is evidenced in whose records they buy. Not just the Cream, and Hendrix and B.B. King (and

recently Albert King and a number of British groups who are being heavily promoted) but Eddie "Cleanhead" Vinson and T-Bone Walker and Magic Sam and Little Walter and Otis Spann and of course Muddy Waters and Howlin' Wolf and then just a whole lot of lesser known artists whose thing is not to be "in" but to play music.

I suppose the Rolling Stones can be greatly credited with turning the kids onto the blues although the folk thing was deeply involved with country blues and earlier than that Elvis was singing Arthur "Big Boy" Crudup songs and was the first white R & B singer of any real consequence. But the Stones were into Muddy Waters and Slim Harpo and Bobby Bland and a lot of their early work was straight blues like *Little Red Rooster* and *I'm A King Bee* and after the clean, yeah, yeah hand-holding Beatles of the same period it was damned exciting to put on a Stones album for some funk. That was before buttons got big, but the one proclaiming "MICK IS SEX" was popular then and may have triggered off much of *that* area of pop culture. And Mick was sex, too. (Still is, as far as I know). Not only were the old blues lyrics he sang all about king bees who could buzz all night long but the tunes he wrote with Keith Richard were earthy odes to amour with blues changes.

The Stones went out of their way to acknowledge other sources as did the Yardbirds and the Animals a little later and rock and roll fans began to buy

Muddy Waters albums. The blues thing died down a little in the next couple of years although it affected almost everyone in the forefront of pop music and the Paul Butterfield Blues Band started to make some noise in pop circles. Then in 1966 after a few American blues bands began to receive some attention (Canned Heat, Charlie Musselwhite) due largely to Butterfield's popularity; Eric Clapton, Jack Bruce and Ginger Baker formed the Cream and clinched it all. Their first album, *Fresh Cream*, was an immediate success although it sold much better after the release of *Disraeli Gears*, the second LP by the group and the one which included a hit single, *Sunshine of Your Love*. By this time the group was more pop than blues and Clapton, previously the most revered blues guitarist in Europe, emerged as the most highly praised guitar player in rock. While all this was taking place Mike Bloomfield had become the rave of the almost underground blues scene in America and had split from Butterfield's band, the group with whom, as lead guitarist, he had achieved his notoriety. And Jimi Hendrix, a young player who had toured behind almost all the American R & B singers, went to England, put together a trio and within a year became a legend. Like Clapton, Hendrix was a blues player before he achieved his phenomenal pop success. But unlike Clapton and Bloomfield who are "merely musicians", Jimi Hendrix is a handsome and very sexual cat with a terrific sense of theatre. The

(Continued on page 98)

Phil Morris

Ironically, the popularity of the young blues musicians has resulted in more work for the original cats they learned from. B. B. King has more work than he ever had in his life and Muddy Waters plays the rock halls with some regularity. In addition to the originators there is a generation of their younger black protégés who are now playing to rock audiences such as James Cotton, Jr. Wells and Buddy Guy.

Well, all that has happened and yet the popularity of blues among the young rock fans of America has just begun. In New York in the past month there has been so much live blues activity that I have rarely stayed home more than two nights per week. John Hammond has been knocking them out so bad at the Scene that he was held over for the entire month of August. (John's new album, to be called *Sooner or Later*, was recorded but not released and unavailable for review at press time.)

Fleetwood Mac and Ten Years After both made brief appearances at the Scene in addition to concerts; Big Brother and the Holding Company were in town (lead singer Janis Joplin is easily the greatest living white female blues singer). Buddy Guy and B. B. King have been around. So has Muddy Waters and Jeff Beck and the list goes on. I think I'll quit writing about it now; it's almost time for the concert and I have six new albums

About all I have to say about the '50's Rock Revival is that it's big in England and by that I mean the Crickets are back together, Bill Haley and the Comets are doing a tour, Fats Domino and Little Richard are working again and record companies are re-issuing old rock and roll sides by popular demand. It's healthy and fun and you can hear a lot of the old stuff on WOR-FM — if you can sit through the schlock and AM type jocks

For another excursion into nostalgia try Johnny Angel's Teen Beat Go-Go Show complete with dedications—"from Pat to the crowd on 207th St. and for Maxine from Tom" — as well as oldies. 12:00 - 12:30 A.M. Sunday nights on WHBI-FM.

Next Month: *Soundtracks and?*

RECORDS

Junior Wells:

Coming At You

Vanguard

VSO79262

You're Tuff Enough

Blue Rock (Mercury)

SRB64002

Buddy Guy:

A Man And The Blues

Vanguard

VSD79272

The first of these three records is Junior's last album for Vanguard and it also is the last recording with Buddy Guy behind him on guitar. That fact alone makes the album worthwhile. Buddy has his own band now and Junior is with Mercury's newly formed Blue Rock label and neither men are as strong on their current recordings as they were together on this one. Buddy's guitar complements Junior's colorful vocals and gutsy harmonica and when

he solos, like on *Five Long Years* it's a delightful part of the whole. Everything fits together. The two men work with the grace of a pair of ballerinas who have been dancing together for a long time. In fact, the entire set seems to work smoothly with really nice horn lines that never get in the way. There's a lot of good slow material here which is definitely Junior's strongest bag. Unfortunately, such is not the case with *Tuff Enough*. The fault lies mostly with the tunes and arrangements. Both are weak and unimaginative. Sort of second rate soul save for two fine slow blues on side two; *You're The One* and *The Hippies Are Trying*. These two really come off with pleasing guitar work (all the side ones are uncredited) and some lonesome harp work by Junior (he says "Now watch me do this, right here.") *The Hippies Are Trying* features a passably pleasant piano and very genuine lyrics.

Junior gets into some roaring harp things on the up-tempo numbers but they are otherwise pretty dull and the horn parts are outright boring. It seems obvious from this outing that Mercury is trying to turn Junior into a soul singer. He may be capable of that with good matreial. But judging from what's here he should just play his harp and sing the blues.

Buddy guy has a well-deserved reputation as a show-off guitar player. He's fast and flashy and lives to demonstrate his athletic abilities with the instrument. But when he settles down to play as he did on this record I suppose he's damn close to the very top of the pile of blues guitar players. He's got the dexterity; amazing technical agility, in fact, but in addition to speed there is all that sensitivity. He caresses a note with something that goes far beyond skill. The tenderness is evident throughout the album but the title track is beautiful enough for tears as is *One Room Country Shack* and B. B. King's *Sweet Little Angel*. Buddy wrote five of the nine tracks and his singing ranges from pleasant to superb. The set is really sparked by Buddy's band and the extra added attraction here, namely Otis Spann's indescribably perfect piano work is enough to recommend the record. A couple of Buddy's tunes seem hastily put together but are certainly acceptable as just good jams. Blues people shouldn't miss this set for if B. B. is the King of blues then Buddy must certainly be the Prince.

Fleetwood Mac Epic BN 26402

Fleetwood Mac is easily the most tasteful and proficient of the British blues groups I have heard to date. Their music has a depth and conviction that is lacking in some of the flashier groups. There is no bull shit, it's all music. They run the gamut from tender to raunchy and this album represents them well. *My Heart Beats Like A Hammer* has all the drive of a rock pounding chain gang with the power of a diesel locomotive carrying it along. *Hellhound On My Trail*, done only with piano and vocal is the most

(Continued on page 112)

Jimi Hendrix Experience is an act, not just a band. But even though Hendrix, a sensitive singer and a fine songwriter, is one of the biggest attractions in pop, his music is still basically blues. And when he's not performing but just jamming, which he apparently enjoys a great deal, it's always the blues that come out his axe.

Now that the blues scene, or more correctly, the young, white blues scene (the Chicago players have been there all along) is emerging and breaking through into pop, a number of groups are being exposed and are well received. Some, like John Mayall and his Bluesbreakers and John Hammond, have been around for years just playing their own brand of music with no particular effort toward pop recognition. Now they are being accepted on their own terms. Other groups are relatively new although the individual members have been doing their thing for a long time. It seems that half of the cats playing blues in England have been associated with Mayall at one time or another.

Two of the better British groups are Fleetwood Mac and Ten Years After. Both groups have records in this country and have recently done tours here. Jeff Beck, former Yardbird, has a blues-based rock group that is causing excitement in these quarters and more British blues bands are due to release records here shortly.

Phil Morris

vious one or this or that song is a particularly good one or the production job is outstanding but in the final analysis the cat is so damn good that — well it's *his* new album and you'll love it anyway. B. B. King is such an artist. His worst recorded works are worth owning and the best such as *Live At The Regal* are absolute musts for blues fans. *Blues On Top Of Blues* varies from really nice to superb. Almost all the tunes (written by B. B., every one) are terrific. There's no real point in listing favorites. B. B.'s performance here is fine, as usual, incredibly smooth and polished. He doesn't play his guitar enough to suit us old rock freaks but when he does it's delightful. The horn lines are dated but perfect and the production near flawless. This album is about as good as any if you want to get into B. B. King.

John Mayall — *The Blues Alone*.

London PS 534

Since the advent of multi-track recording techniques, I'm sure there has been many dreams of doing an album with oneself. And a number of such records have been made — playing both lead and rhythm guitar or singing harmony with oneself — generally doubling. But it took John Mayall, at 29, the old man of British bluesmen (meaning he has been playing his brand of music in that country long before it was fashionable), to an entire "blues band" sort of record with only the occasional assistance of his drummer. He plays harmonica, guitar (9 & 6 string), piano, bass, organ, celeste, drums and sings and wrote every song on the album. Of course, the inherent danger in doing a record of this kind is that it may come out sounding "put together." Well, it doesn't exactly sound like that but there is some lack of spark at times due mainly to the fact that, even though many instruments are heard, only one personality is present. It's a weird sort of unity that must really be considered as a solo album rather than comparing it to, for example, Mayall's work with his group, *The Bluesbreakers*. There's some fine material here; most notably *Sonny Boy Blow*, a tribute to Sonny Boy Williamson. And Mayall performs adequately on all the instruments, exceptionally on keyboards like his famous "jangle" piano. Not a knockout album but a must for Mayall fans.

Tens Years After — *Undead*.

Deram (London) DES-18016

Here's the second album from *Ten Years After*, the group whose initial effort was the blues surprise of the year. The current effort is a live recording and a good one. But there is cause for some reservation in handing out rave ratings. The surface excitement is there as is the technical skill and mechanical mastery of the instruments. And, of course, there is more of Alvin Lee's stupifying speed. He's got to be one of the fastest guitar players alive. But one gets the feeling that he's a bit too impressed with his own ability to impress. This feeling was confirmed when I saw the group

live. I have no objection to theatrics on stage as long as the music doesn't give way to flash. Speed and dexterity is not enough. It's what one does with his skill that counts and Alvin Lee tends to "run off at the mouth." Always musically, mind you, he plays all the notes but I sometimes think he just likes to watch his fingers fly. And the hell of it is that he can play with beauty and sensitivity; witness some of the things like *Don't Want You Woman* on the first album. As for the other members, the organist, Chick Churchill, seems to be somewhat jazz influenced and is a fine player with imagination and taste. Leo Lyons, the bass player, is a definite asset; all over the instrument and cooking solid throughout. He's the hardest working bass player around. I'm not impressed with the solo drum work here, but with the group, Ric Lee is totally pleasing. The selections here are long workouts and the only one that is really satisfying is the final track of the album, *I'm Going Home*. You have to shake a little with this one. The keyboard work is fantastic and the excitement and total involvement with the piece is evident and indicative of what the group is capable of. Alvin Lee's vocals are not outstanding but they are believable. It's, in all, a rousing set but I want more from this group.

An Anthology of British Blues.

Immediate J1252006

Here's a sampler of previously unreleased blues by British artists that is as interesting a pot pourri as I've yet seen on one record. I'd have to reproduce the entire liner notes of the album to really cover the range of the material but here's an indication: two things by Mayall when Eric Clapton was still with the Bluesbreakers; three fine pieces by Clapton, backed by Rolling Stones Mick Jagger on harp and Bill Wyman on bass; two nice cuts by a group headed by T. S. McPhee, two selections by the Savoy Brown Blues Band (an album is due to be released here soon); a Freddy King style instrumental by the now defunct Stone's Masonry and the surprise, two cuts by Jo-Ann Kelly, a gutsy chick who sings like Memphis Minnie. She could be a real find with the right group behind here. Bob Hall plays piano with both McPhee and Savoy Brown. Certainly a record worthy of praise for interest and excellence.

Wes Montgomery Discography

(His best work is generally those records on Verve. The current things on A & M are more pop than jazz.)

Wes Montgomery	Pacific Jazz 5
Best of	Verve 8714
Bumpin'	Verve 8625
California Dreaming	Verve 8672
Day In the Life	A&M 3001
Down Here On the Ground	A&M 3006
Easy Groove	Pacific Jazz 20104
Goin' Out Of My Head	Verve 8642
In the Wee Small Hours	Riverside S-3002
Wovin' Wes	Verve 9610
Round Midnight	Riverside S-3014
Tequila	Verve 8653

mournfully beautiful arrangement I've ever heard of the well-known blues. But you can't cry for long because they go right into *Shake Your Money Maker* which cooks so hard I defy anyone to sit still through an entire listening. One tends to become tangled in their music; virtually shaking and stomping or wincing, near tears; unable to escape until the piece has ended. And then one is left with a fulfillment; there's something intensely satisfying about the way they play. Both lead guitar players are extremely clean and imaginative, uncommonly so, but one can't discredit the drummer and bass man. It's not the sort of record that leaves you wanting a little more from one of the members. Side two is at least as compelling as side one with two particular favorites for me: *Cold Black Night* and *Got To Move*.

This is an LP that will not only introduce you to one of the best young blues groups but will be a treasured part of any record library and provide an example of some of the finest bottleneck or slide style guitar playing on record.

B. B. King - *Blues On Top Of Blues*.
Bluesway (ABC) BLS-6011

What can be said about an artist who has been acknowledged by his contemporaries as the very top in his field? A new album arrives and it's a little better or not quite so good as the pre-