

Proceedings  
*of the*  
Radio Club of America



December - 1928

*Volume 5, No. 10*

RADIO CLUB OF AMERICA  
55 West 42nd Street :: New York City

# The Radio Club of America

*Bryant Park Building, Room 819*

55 West 42nd Street :: New York City

TELEPHONE — LONGACRE 8579

---

## OFFICERS FOR 1928

*President*

Ernest V. Amy

*Vice-President*

Lewis M. Clement

*Treasurer*

Joseph Stantley

*Corresponding Secretary*

J. L. Bernard

*Recording Secretary*

William T. Russell

## DIRECTORS

Edwin H. Armstrong

George E. Burghard

Carl Dreher

Thomas J. Styles

Charles E. Maps

Willis K. Wing

George J. Eltz, Jr.

Harry Houck

Louis Gerard Pacent

Lawrence M. Cockaday

Austin C. Lescarbours

Frank King

Pierre Boucheron

*Editor of Proceedings*

Austin C. Lescarbours

*Business Manager*

Carl Dreher

---

# PROCEEDINGS of the RADIO CLUB OF AMERICA

---

VOL. 5

DECEMBER, 1928

NO. 10

---

## A High Power Output Tube Radiotron UX-250

K. S. WEAVER  
Westinghouse Lamp Company

*A Paper Delivered before the Radio Club of America on October 10, 1928*

**R**ADIOTRON UX-250 was developed to fill a definite place in the field of radio reception, that of a tube which would deliver a large output to a loud speaker without appreciable distortion and with a grid swing or input signal strength readily obtainable with available apparatus.

The tube as finally developed has been found to meet this requirement well. A filament of the coated type is used which insures an ample electron emission with a moderate filament power consumption. The plate resistance is inherently low, a voltage of only 450 being required for full power output.

The general characteristics of the tube were determined according to its intended use as a power amplifier. Consequently it is not well adapted for use as an oscillator or voltage amplifier. The use of a coated filament together with the low amplification factor, which were found to be very desirable features, are not ideal from the standpoint of oscillator tube design, although the tube can be used as an oscillator in certain cases.

### GROWTH OF POWER OUTPUT REQUIREMENTS

**B**EFORE going into the details of the development of the UX-250 it may be of interest to consider some of

the factors which have made the production of tubes of high power output desirable.

A very few years ago about the only kind of loud speaker in general use was of the horn type operated by a vibrating metallic diaphragm. This form of loud speaker was developed from the headphones which were used before the extending application of multi-stage audio frequency amplification made the use of loud speakers necessary and desirable.

The characteristics of this type of loud speaker as well as those of the interstage coupling transformers which first appeared on the market were such as to accentuate greatly the higher frequencies and to suppress the lower frequencies.

Most of us are probably familiar with the major developments which have led to the very greatly improved reception which we now enjoy. Great improvement in transformers has been made, largely

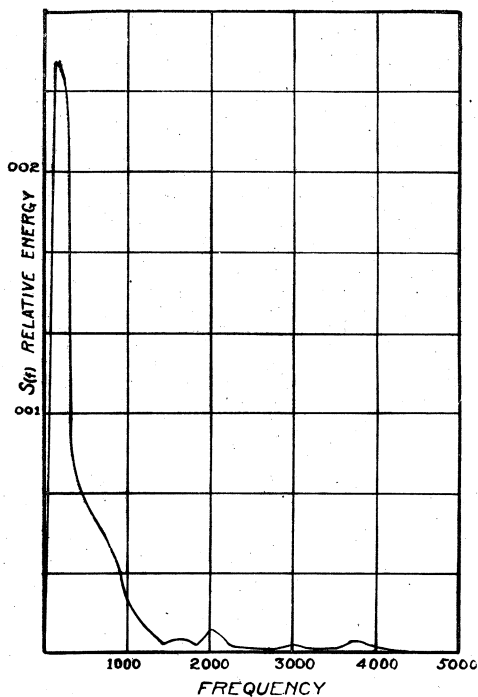


FIG. 1

117

(Copyright, 1928, Radio Club of America)

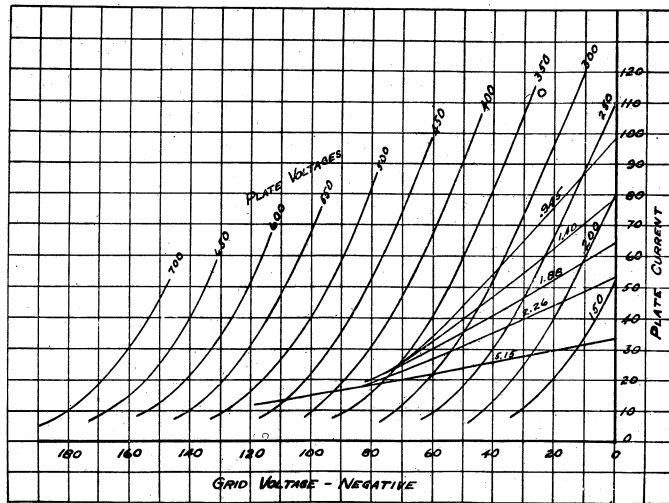


FIG. 2

due to the use of more material as well as to a better understanding of radio requirements. The horn type of loud speaker is now being replaced in service by several types of cone speakers driven by balanced armature motors of various designs. The dynamic speaker which is now becoming very popular represents the latest development and excels the others both in the amount of power which can be handled and in freedom from distortion at high output.

These developments, therefore, have been mainly along the lines of better transformer and loud speaker design, making it possible to reproduce frequencies well below 100 cycles with practically normal relative intensity.

In order for full use to be made of the best types of sets now made it is necessary that tubes be used in the output stages capable of handling many times the power formerly needed.

A general idea of the relatively large amount of power that the output tube must handle in order to reproduce the lower frequencies adequately may be secured by an examination of Fig. 1 reproduced from "An Analysis of the Voice Frequency Range" by I. B. Crandall and D. MacKenzie, *Bell System Technical Journal*, July, 1922.

This curve shows in a striking way that in normal speech the power associated with the low frequencies is enormously greater than that associated with the high frequencies.

The same general relation may be readily observed by the use of an oscillograph or a millimeter inserted in the output circuit of a receiving set. Low notes at intensities which are not particularly striking to the ear are seen to have amplitudes many times greater than those of the higher notes. This effect is evident whether speech, vocal music or instrumental music is being studied.

A little thought will show that the use of tubes designed for low power output in sets equipped with transformers which pass the low notes will, unless the output of the set be very much reduced, result not only in bad distortion of the low notes, but also in many cases the complete obliteration of the high notes.

The following tabulation shows the power output, grid swing and other characteristics of the tubes which have been developed from time to time in order to meet the growing demand for a larger power output.

TUBES	Ep	Eg*	MU	Rp	FILA-MENT	OUT-PUT MILLI-WATTS
UX-199	90	- 4.5	6.6	15,500	(Thoriated)	7.6
	90	- 7.15		18,000	(Tungsten)	17.5
UX-120	135	-22.5	3.3	6600	(Tungsten)	105.
UX-201A	90	- 4.5	8.0	11,000	(Tungsten)	14.
	135	- 9.0		10,000		55.
UX-112A	180	-13.5	8.0	4700	Coated	275.
UX-171A	135	-27.	3.0	2200	Coated	330.
	180	-40.5		2000		720.
UX-210	425	-35.0	7.5	5400	(Thoriated)	1550.
					(Tungsten)	
UX-250	350	-58.5	3.8	1900	Coated	2450.
UX-250	400	-67.5		1800		3500.
UX-250	450	-80.0		1800		4600.

\* To negative end of filament.

Of the above tubes the UX-199 and UX-201A are general purpose tubes, the others were designed primarily as output tubes. The UX-112A, however, while distinctly an output tube, has a high amplification constant which makes it useful as a voltage amplifier and detector as well. UX-210 also has a fairly high amplification constant which facilitates its operation as an oscillator; but as a power output tube, although the plate voltage is high, the grid swing is only 35 volts and the power output is low compared with that of the UX-250.

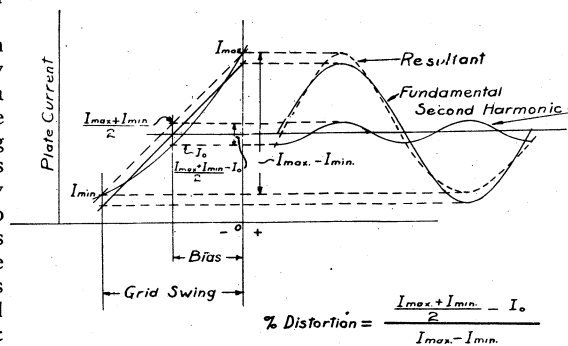


FIG. 3

The power output of the UX-250 is about ninety times as great as the output of the UX-210A which was originally used as the output tube of most storage-battery-operated sets at the time when the horn type of loud speaker was common.

Most people readily appreciate the advantages of increased volume when it has been demonstrated that this can be obtained without distortion.

With the relatively poor quality of reception that was formerly obtained, people having a well developed sense of musical harmony, generally preferred to use low volume due to their unconscious objection to the distortion at full volume. In many cases it was contended that the music was too loud although it was the distortion which went with high volume that was the real source of the objection. With the best equipment now available most people, after becoming accustomed to the fact that good volume may be obtained without distortion, prefer to have their sets adjusted for a more normal volume.

DEVELOPMENT OF THE UX-250

AT THE time work was started on the development of this tube it was decided to limit the plate voltage to 450; and in order to keep the physical dimensions within limits that would permit the use of the standard UX base the plate was limited to a size which was estimated to be able to dissipate 25 watts without an unduly high temperature rise.

The blackening of the plate makes a larger heat dissipation possible, due to the resulting increase in thermal emissivity.

It was further estimated that with one stage of audio frequency voltage amplification, using equipment now available, a grid swing of 80 volts peak could be assumed.

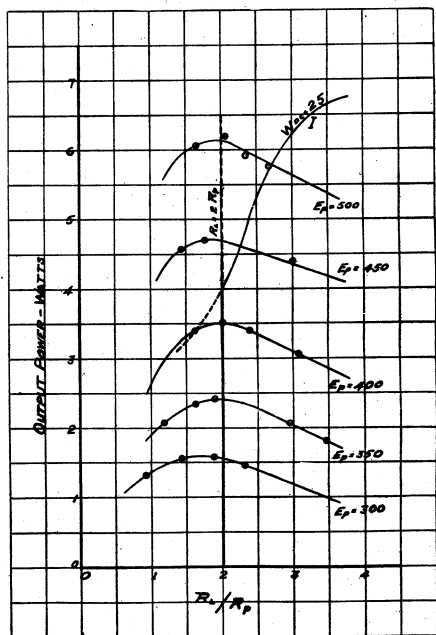


FIG. 4

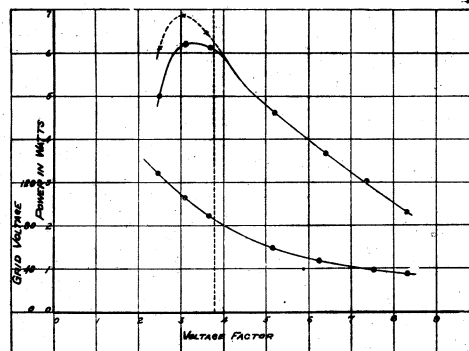


FIG. 5

With these factors fixed as a starting point, several tubes were made up having amplification constants ranging from 2.5 to 8.3.

A set of static characteristic curves was then taken for each tube and from these was calculated the maximum undistorted power output that could be obtained, using in each case the optimum value of load impedance and grid

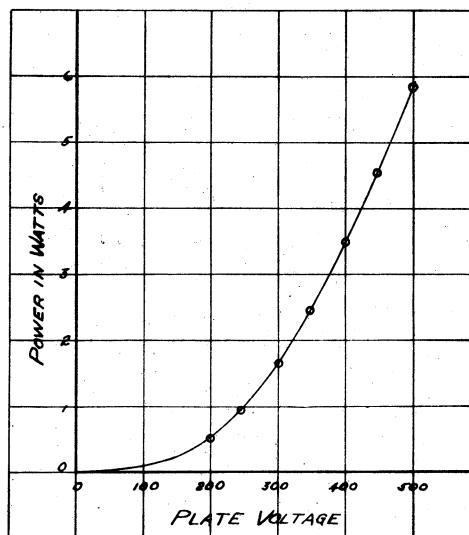


FIG. 6

bias. The plate current in all cases was limited to 55 milliamperes, the value corresponding to a heat dissipation of 25 watts. The maximum second-harmonic distortion permitted in these calculations was five per cent., a value which has been generally assumed to be inappreciable in effect on reproduction.

The methods of calculating the maximum power output from a set of static characteristic curves have been described in detail by others<sup>2</sup>; a brief outline of the procedure will be sufficient here.

For a moderate plate voltage at which the heat loss at the plate is below the maximum allowable, the best load impedance is equal to twice the tube impedance. That this

is true has been shown theoretically by W. J. Brown<sup>3</sup> (Symposium on Loud Speakers. *Proceedings of London Physical Society* 36, Part III, April, 1924) and was verified experimentally by Hanna, Sutherland, and Upp preceding their development of the UX-250.

An actual determination of the proper load impedance and grid bias for maximum power output at a given plate voltage involves a considerable amount of cutting and trying, due in part to the fact that the tube resistance varies with plate current.

The most straightforward procedure is probably that of taking points on the plate current curve, at the desired plate voltage, corresponding to several values of plate current and determining for each the load impedance that will give the maximum power output without excessive distortion, Fig. 2.

The power output for any dynamic curve is given by:

$$W = \frac{(I_{max} - I_{min})(E_{pmax} - E_{pmin})}{8}$$

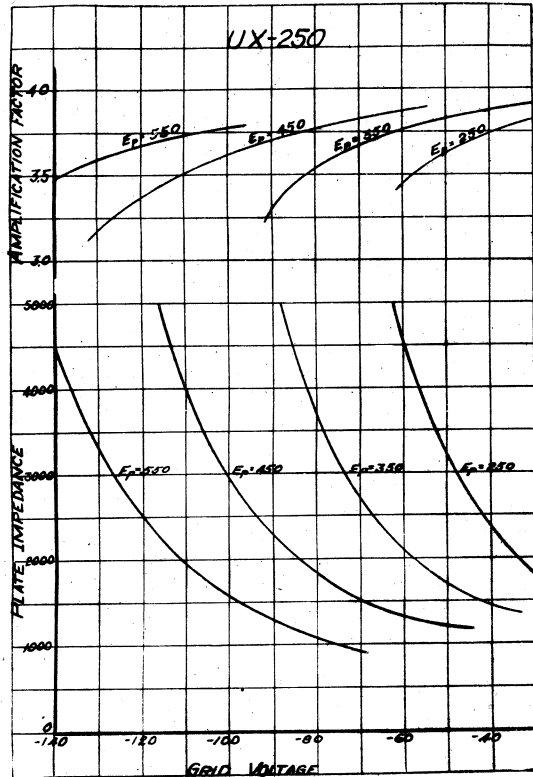


FIG. 8

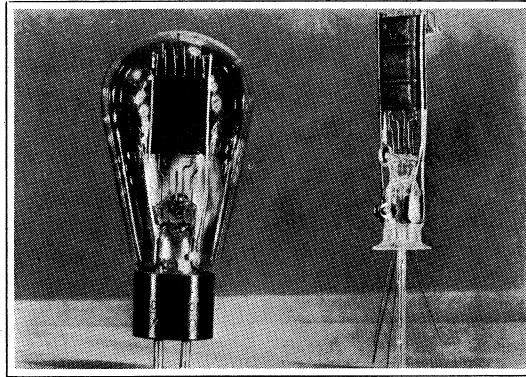


FIG. 7

The minimum plate current being that where the negative grid swing is equal to the fixed grid bias.

When this has been done it will be found that the ratio  $R_1 R_p$  becomes less as the plate current is increased or the grid bias is decreased; and that the maximum power output is obtained at a point where  $R_1 R_p$  is equal to approximately two.

If, however, the current at this point is greater than the maximum allowable, the output corresponding to the

maximum plate current must be used, the load impedance being in this case greater than twice the tube impedance.

Fig. 3 illustrates one step in the procedure, that of determining the second-harmonic distortion due to the curvature of the dynamic characteristic. The formula used is—Distortion equals  $\frac{\frac{1}{2}(I_{max} + I_{min}) - I_0}{I_{max} - I_{min}}$  and gives the amplitude of the second harmonic component as a decimal of the amplitude of the fundamental.

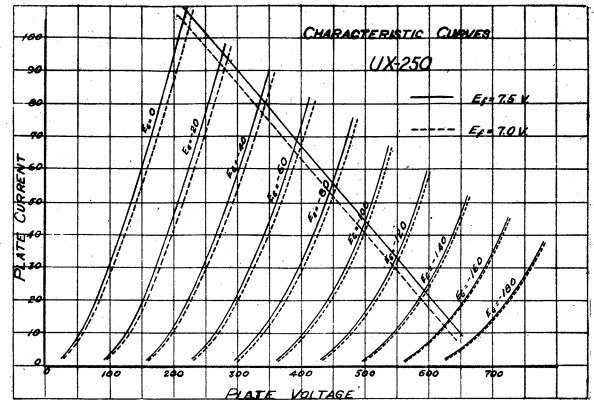


FIG. 9

Fig. 4 shows the relation between the power output obtainable at various plate voltages and the load impedance. The curve marked wdc-25 shows the limiting values as determined by a plate dissipation of 25 watts.

In Fig. 4 it is also shown that when the plate current becomes the limiting factor, a load resistance greater than twice the tube impedance should be used.

In Fig. 5 are summarized the results of the work done on the tubes of different amplification constants. Curve I shows how the maximum undistorted power output varies with amplification constant, and curve II shows the corresponding grid swing required in peak volts.

It will be seen that the grid swing required to operate the tube at full output becomes rapidly greater as the amplification constant decreases. Also it will be noted that the power output reaches a maximum and then decreases. Both of these conditions are due to the fact that at low

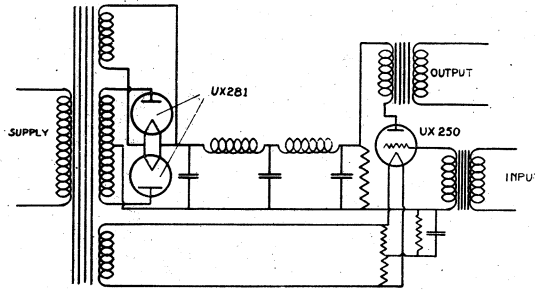


FIG. 10

values of amplification constant the grid becomes less effective in controlling the electron flow to the plate. This results in an excessive curvature of the plate current characteristic which gives a correspondingly limited working range when the maximum distortion permitted is fixed at a low value.

The dotted line of curve I was obtained by permitting an unlimited plate dissipation. It will be seen that a maximum is obtained in this case as well as when the plate dissipation is limited.

Fig. 6 shows the relation between maximum undistorted power output and plate voltage. The power output may be taken over a limited range as proportional to the square of the plate voltage.

Fig. 7 shows the general appearance of the UX-250 as well as the electrode structure.

Figs. 8 and 9 show the static characteristic curves.

The dotted curves of Fig. 9 correspond to a filament voltage of 7. The undistorted power output is in this case 4.27 watts, a grid swing of 78 volts being required. It will be seen that there is little loss in maximum power output or in sensitivity when the tube is so operated, and it is in fact frequently preferable to operate the tube slightly below

normal filament voltage in order to protect it from over voltage due to line fluctuations when as is usually the case it is operated on alternating current. Careful control of filament voltage will help materially in securing satisfactory operation and long life.

The inter-electrode capacities are: from grid-to-plate 9 mmfd., from grid-to-filament 7 mmfd. and from filament-to-plate 5 mmfd.

OPERATION OF UX-250

THE UX-250, requiring for full power output a grid swing of 80 volts, has been designed to be operated from a detector followed by one stage of audio-frequency amplification.

By the use of a high plate voltage on the detector, and the plate current method of detection the intermediate stage of audio frequency amplification may be omitted. This will tend to improve the quality, due to the elimination of one audio transformer, as well as to the improved detector action when plate current detection is used. This, of course, will require rather high radio-frequency amplification preceding the detector.



FIG. 11



FIG. 12

The voltage supply for the ux-250 is generally obtained by using two single-wave rectifiers (ux-281) in a circuit such as that shown in Fig. 10.

The voltage output of the filter should be high enough to supply the automatic grid bias for the ux-150 as indicated.

Several different pieces of receiving apparatus using this tube are now on the market. Some of these are shown in the following illustrations.

Fig. 11 shows a commercial form of dynamic speaker and power supply unit, and Fig. 12 shows a radio set with built-in dynamic speaker. In both of these the ux-250 is used as the output tube.

REFERENCES

1. Development of New Power Amplifier Tube. C. R. Hanna, L. Sutherlin, and C. B. Upp. *Proceedings of the I. R. E.*, April, 1928.
2. Design of Non-distorting Power Amplifiers. *Proc. A. I. E. E.*, Feb., 1925, E. W. Kellogg. Output Characteristics of Amplifier Tubes, *Proc. I. R. E.*, December, 1926, J. C. Warner and A. V. Loughren.
3. Discussion, Symposium on Loud Speakers. *Proceedings of London Physical Society*, 36 Part III, April 1, 1924.





# Isolantite

the *logical* Radio Insulator



Isolantite is fabricated to many forms and in a broad range of dimensions. Whether processed as tubing, but a few thousandths of an inch in diameter, or two-ton antenna strain insulators, its unique physical and electrical characteristics remain unchanged.

For applications in the short-wave field, Isolantite is the *logical* insulating material.

*Write for bulletin No. 100 B*

**Isolantite Company of America**  
(*Incorporated*)

New York Sales Offices: 551 Fifth Ave., New York



# CONTINENTAL

## RADIO AND ELECTRIC CORP.

THE SYMBOL OF SERVICE

160 VARICK ST., NEW YORK, N.Y.

### OUR SERVICES ARE AT YOUR COMMAND



The pioneer house of Continental is glad to place its extensive merchandising facilities at the command of the buyers, engineers, and other members of the Radio Club of America. Through this dependable service, built up during years of steady growth, Continental is able to recommend members to reliable dealers in their districts or to arrange for their securing such radio materials and merchandise as they need.

The names of dealers in your vicinity and any other information you may desire will be cheerfully supplied on request.

**Continental Radio & Electric Corp.**  
160 Varick Street  
New York City