

erence Relief from Congress?

Radio Digest

TWICE
A MONTH

ILLUSTRATED PROGRAMS

FIFTEEN
CENTS

SECOND DECEMBER NUMBER, 1926

Reg. U. S.
Off. &
Canada

Vol. XIX No. 5



Third Section of \$26,000 Whozit Game; How to Build "Regenatrol"; Farm Programs; Stations Listed by Location; How KFRU Broadcast Cupid; Mike Worries Movie Stars

MARCONI FORECASTS POWER ON AIR SOON

SEES DAY WHEN ELECTRICITY WILL BE TUNED IN

Noted Inventor Reviews Recent Developments in Radio Science—Cost Is Greatly Reduced

By A. C. Blackall
LONDON, England.—"It may be possible," Senator Guglielmo Marconi declared recently here at the annual James Forrest lecture at the Institute of Civil Engineers, "that some day electric waves will be used for the transmission of power over moderate distances."

The famous inventor of Radio telegraphy was reviewing the recent progress of the science of Radio. He continued:

"That achievement will involve the perfection of devices for projecting the waves in parallel beams in such a manner as to minimize the dispersion and diffusion of energy into space. With regard to the theory of Radio, less is known than many people imagine. The laws and formulas announced and accepted several years ago, when applied in practice, make it necessary to employ very costly aerial systems and require such large amounts of power that only a very small margin of profit remains when this system of transmission is worked in competition with modern cable and land lines."

Here's Old Friend with Brand New Call 'WOW'

WOAW, Woodmen at Omaha, Acquire Significant Letters

OMAHA, NEB.—On December 15, 1926, the Woodmen of the World Life Insurance Association's Radio station, formerly transmitting with the call WOAW, goes on the air with new call WOW, which is the official insignia of the Woodmen of the World.

When the station was granted its license to broadcast in 1923, the department of commerce was asked permission to use the WOW call, but at that time the Steamer Henry J. Bibble, operating on the Pacific Coast, was using this call. When the Radio apparatus was recently removed from this vessel, the department of commerce notified the Woodmen that they could employ these letters.

At about the same time the new call letters WOW are inaugurated, the Woodmen hope to have completed installation of new Western Electric transmitting equipment with a minimum power of 1,000 and a maximum of 2,500 watts. At the present time the station and studios are undergoing a complete reconstruction.

Million Members Easy For Post-KDKA Club

Distinctive Group Has Advantages Listeners Enjoy

PITTSBURGH.—The new Pittsburgh Post B. C. L. Radio club, envisioned by James W. H. Weir, Radio editor of the Post, bids fair to reach its goal of one million members. It isn't like just ordinary Radio clubs. This one meets via the air weekly through Station KDKA.

Helpful and interesting lectures, such as "The Uses of Wire in Radio," are broadcast in plain and understandable language, and are supplemented with printed data of engineering nature, circuit diagrams and suggestions which are mailed to all members free of charge for the asking. Such questions as are not answered by the printed matter are answered personally by Mr. Weir.

Non-members may have the printed matter and same service by including with each request ten cents in postage.

Saturday evening at 7:15, Eastern Standard time, is the regular meeting time. After each talk interesting Radio news and personal items regarding the members of the club, are broadcast.

JOHN CLARK, WSWs, "FOUND" COVER GIRL

IT TAKES John Clark, announcer at WSWs, Chicago, to pick 'em. And you will agree with this verdict after one glimpse at the beautiful maiden on the Radio Digest cover this issue. The little lady is Miss Hazel Blanche Carroll of Wheeling, Va. Miss Hazel came to Chicago to study at the Chicago Musical college and Mr. Clark, casting his eye about for talent for his beautiful Spanish studio in the Straus tower, discovered her. "If she can sing as good as she looks," he mused. You know the rest, and the fans rave over her rendition of "Me Too."

New Broadcasters Should Be Assigned Short Waves to Develop, Says Crosley

Noted Radio Leader in Interview States Pioneers Must Be Protected Against Piracy—Newcomers Should Do Own Prospecting—Asks for Legislation with Power to Control

CINCINNATI.—Declaring that owners of new broadcasting stations should develop the great short-wave field, doing their own prospecting of the ether, and stating emphatically that pioneer broadcasters should be protected against piracy, Powell Crosley, Jr., prominent Radio manufacturer and owner of Station WLW here, said in a recent interview:

"The egg that fell from the wall in the oft-quoted Mother Goose rhyme; Humpty-Dumpty, presented no more serious job of unscrambling than the broadcasting stations that are all mixed up now in the bank of wave lengths between 200 and 600 meters. Some 600 broadcasting stations are now overlapping or on top of one another, wrestling and struggling for a place free from interference in a band that can accommodate less than one hundred stations."

Legislation Serious Problem
"Of course, the most serious problem is legislation through which there will be established some authority to control the wave length assignment of these stations and to police the air in such a way that its use will be most beneficial to the public."

"Congress will, no doubt, frown upon any idea that will give special rights to any individual broadcasters. The courts, however, will, no doubt, regard the matter differently, as they should. Property rights will most certainly be recognized by the courts. The rights of priority of pioneer broadcasters will certainly be recognized by the courts, just as the rights of the prospector and the inventor have always been respected under the common law."

"It should be obvious to any one that the pioneers who invested their money to develop broadcasting should have very definite rights to the wave lengths that they have made valuable. Now that the value of these wave lengths is established, it seems unfair that anyone else should destroy the value of this investment through ensuing interference."

"The question then arises, what shall be done with the new broadcasters? While

it seems logical that they should be deprived of the right to interfere, a way should be devised whereby they can broadcast even though it is necessary to put them in the position of the pioneer broadcasters when they started.

"There are thousands of wave lengths available for broadcasting below 200 meters (above 1500 kilocycles). These wave lengths are practically entirely undeveloped. They are perhaps even better suited for broadcasting than those wave lengths in the present band because it is a well-known fact that they enjoy less interference from static."

"It is true that today there are comparatively few homes equipped with apparatus to receive outside of the present wave bands of broadcasting; few receiving sets that will bring in the short wave stations, but is that not the same situation which existed some five years ago when the pioneer broadcasters commenced their work? Therefore, would it not be fair to insist that the newcomers undertake the same work that was done by the older broadcasters, that is, create a quality of broadcasting on the shorter waves that will in turn create a demand for receiving apparatus to bring in those short waves?"

How Privilege Should Be Regulated
"In deciding what stations are to be transferred from the present band of broadcasting to the new band of shorter waves, two elements should be very carefully considered. First, that which has already been mentioned, priority, which should be considered very carefully in connection with a second element, the service that is being rendered. A station, in order to maintain its prior right to a wave length, should maintain its place in the development of Radio, for it would be unfair to the public interest to reserve a wave for an older station on a basis of priority alone, unless that station continued to develop and maintain the service."

"Whether broadcasting is regulated by the department of commerce or handled (Continued on page 15)

SHOK

By

Jack Smith, the "Whispering Baritone"; Little Joe Warner; May and June or Rae and Lee; Don Malin; Introducing Natalie Suzanne Arnoux; Freeman Talbot Visits Us; Isbell's Picture Unappreciated; Silver Masked Tenor Almost Discovered.

"Oh, if I could only see with my ears!" writes F. J. of Boston. Practically the same sentiment is echoed in a letter from Miss M. E. H. of East High Gate, Vt. I think that is where the Radio artist has a stronger hold on the fan than the moving picture artist. With the latter the direct personal contact is lost. The Radio artist lives and breathes himself or herself directly and simultaneously into the consciousness of the listener. This is obvious from the many letters I receive from impressionable young folks, curious young married folks, middle aged folks and kindly old folks. Going back to M. E. H. who is interested in a number of "favorites" I give here a picture of Jack Smith, the "Whispering Baritone." And, my dear, you should see the letter that came with the two line letters! It is signed by T. D. Kemp, "Personal Manager," who grants you this much to go with the thumb-nail portrait: Jack is 29, single and playing the E. F. Keith vaudeville emporiums. Eyes, hair, avoirdupois, favorite breakfast food and all that, you are supposed to make up from the picture—like the Whozits.



Little Joe Warner Stood in a corner At W-C-J-L. He thrust out his tongue And combed sung(fill in your own last line)

At any rate Mary Ann of Kenosha wants to know all about him. The artist Joe really is quite compact. I understand he stands on his toes on a foot stool to reach the microphone; but that may be because the WCFM microphone is tall. Joe stands five feet three, net; has eyes of thirty-one summers and makes the scales bow at 145. He's a vet of the A. E. F. and broadcasts assorted dialects collected from the v. circuits. Sure he's married.

Make it rhyme with "L." Mary.



"Sweet Sixteen" of Kansas City writes "It certainly was nice of Radio Digest to put in so much about my favorite Radio star, Jack Little, but I wish you would put in a picture of the lucky Mrs. Little. It just can't be done, "Sweet 16," I asked Jack about it when he came into Chicago for Thanksgiving and he said, "Why, so far as I know, my wife NEVER had a picture taken in all her life and she wouldn't stand for it—so what can I do?" And that's this. He goes to KTBS, Hot Springs, Ark. from here.

As for "May" and "June" being the same as "Rae" and "Lee" at the WLS, Chicago, station, they are quite the same, quite the same.

While we are in WLS I will answer Betty of Valparaiso who wants to know all about Don Malin, the musical director. Don is tall and dark with hazel eyes that sometimes shine when he is pleased with a musical presentation. He is a graduate of Ames and was brought to WLS by Samuel R. Guard. He formerly was a writer for farm magazines and has made a special study of assembling musical programs in a coordinated idea. Yes, Betty, he has a nice little wife to whom he is entirely devoted. No, the man who conducts the Show Boat on its journeys from town to town is Edgar Bill. Am s'prised you didn't know that.



Christmas will be particularly merry at KTBS, Hot Springs, Arkansas, this year. There'll be a little Christmas tree just so-o-o high. And there'll be a little woe stocking just so-o-o big. And, well for the benefit of those who may not have yet heard and who would be quite interested, Natalie Suzanne Arnoux, the only child of G. C. Arnoux, the most genial announcer, will be just three months and four days old. I composed a verse about the little dear but the folks in the office laughed at it and so you shan't have it. You can blame them for it (or else thank them for it). Merry Christmas, Suzanne, even if it is a little early. Our Mr. Gurney who is back from a visit to your daddy tells me you are wonderful.

No wonder KOA is such a popular station. I saw the great, big handsome director (Continued on page 12)

CONTENTS

Radio Digest, Illustrated, Volume XIX, Number 3, published Chicago, Illinois, December 15, 1926. Published semi-monthly, first three issues of each month by Radio Digest Publishing Co. (Incorporated), 510 N. Dearborn Street, Chicago, Illinois. Subscription rates yearly, Three Dollars; Foreign Postage One Dollar additional; single copies Fifteen Cents. Entered as second class matter May 3, 1922, at the post office at Chicago, Illinois, under the Act of March 3, 1929. Title Reg. U. S. Patent Office and Dominion of Canada. Copyright 1926 by Radio Digest Publishing Co. All rights reserved.

Cupid Scores 16 Hits at KFRU, a Real Radio Romance, by Margaret Averitt..... 4
Mike Worries Cinema Artists, How Screen Stars Ret to Radio, by G. L. King..... 5
How to Build Bruno Regenatrol, Part II, by Joseph Calcaterra..... 7
Third Section of Whozit Pictures..... 8, 9 and 11
"Goody Goody Girl," by Merlin Moore Taylor, Continued..... 10
Woman's Page; Woman's Index to Programs..... 12
Directory of Radiophone Broadcasting Stations, by States and Cities..... 13
Editorials; Indi-Gest; Condensed by Dielectric..... 14
The Reader's View; New Stations; Complete Whozit Rules..... 15
Advance Programs for the Larger Stations, December 15-31..... 16 to 28

Looking Ahead

All Aboard the Fourth Section of Whozits Next Issue. It will be on the news-stands on a date hard to forget, January 1.
Peppy Readers' Views Concerning Many Subjects, especially that of "wave jumping," will appear next issue. Read those this number. What do you think? "The Reader's View" is an open forum. The best letters are published.
Assembling, Wiring and Operating Regenatrol is the concluding article of Mr. Calcaterra scheduled for the First January number.
COMING—What the National Survey of Interference Shows. This material, based upon the tabulation of the survey blanks, will appear soon providing relief is not given immediately by Congress. Watch for this!

Special articles about broadcasting stations and artists, with photographs, and NON-RADIO fiction 5,000, 10,000 and 30,000 words in length are desired. No manuscripts accepted unless typewritten and prepaid, or returned without return postage being enclosed. All manuscripts are sent at owner's risk.

Newsstands Don't Always Have One Left WHEN YOU WANT

Radio Digest

YOU WANT IT!

BE SURE OF YOUR REGULAR COPY BY SUBSCRIBING NOW

SEND IN THE BLANK TODAY

Publisher Radio Digest, 510 N. Dearborn St., Chicago, Illinois.

Please find enclosed check M. O. for Three Dollars (Four Dollars) for One Year's Subscription to Radio Digest, Illustrated.

Name

Address

City

INTERFERENCE IS UP TO CONGRESS

OPPORTUNITY TO WIN WHOZIT PRIZES GOOD

\$26,000 AWAITS FANS WHO PAY CLOSE ATTENTION

Late Comers Can Begin Now—All Questions Answered—Whozit Clubs Have Great Fun

(Whozits on Pages 8, 9 and 11)

Turning over the pages to our famous gallery of Whozits, Radio Digest swings into the third game of the series of eight with this issue.

Are you a fan? Have you followed the game? Are you going after one of the big prizes?

It's all up to you. There are \$26,000 in prizes. Your opportunity to win is just as good as the other fellow's. All you need is a copy of Radio Digest, a pencil, a pair of scissors or a sharp knife and a bit of paste, a fairly good pair of eyes and a natural capacity to do a little thinking.

Still Time to Begin

The game of Whozit is under way but it is not too late to begin. The other two games were presented with the November 15 and December 1 issues of Radio Digest. The rules of the game are published in detail on page 15 of this issue. Also you will find a special program listing of the twenty-four broadcasting stations that are playing Whozit below on this page.

Each of these stations will have \$1,000 in prizes for the listeners who make the highest scores; \$500 gold, first prize, \$300 merchandise value, second prize and \$200 merchandise value, third prize. Two grand prizes of \$1,000 in gold each will be presented to the Whoziteers who make the highest scores in America.

All Questions Answered

North, south, east and west Radio fans are writing in to the stations and to Radio Digest for answers to conditions that they do not understand. "How can we play where stations are blurred out by the wave jumpers?" "When does such and such a station go on the air with Whozit?" "Do we have to actually hear the stations that we intend to match for the prizes?" "Can you send back numbers of Radio Digest?" And so it goes. Letters and cards by the bagful. Radio Digest, or this magazine through the station, is taking care of every inquiry.

Back numbers? Yes, so long as they last. But there remains but a limited supply. Newsdealers, sold out by the excessive demand have telegraphed their reorders and doubled their supplies of copies.

Chances to Win Still Good

But let no one imagine that the chances are all gone. Jump right into the game with this issue. Tune in your nearest Whozit station and follow the hints thrown out by the broadcast announcers. Make this third game a perfect one. There may be an opportunity later on to make up the first and second game.

Have you tried out the Fortnightly Whozit Club idea yet? We have several letters from fans who have brought in some of their neighbors and social acquaintances to listen to the Whozit descriptions. Each member of the club rated to be the first one through with the proper identifications.

Whozit Stations Have Great Fun

Pat Barnes of WHT made a hit with his WHT Whozit club. Al Carney played the organ while the Great Whozit marched around the room to his throne. Then the two candidates were put through a grilling that provided plenty of information to the listeners as to who they were and what they looked like in the Whozits.

Other stations also have put on the M. E. O. W.—"Mysterious Ensemble of Whozits"—with success. Some had a goat with a tinkling bell. The goat would ride the candidates for a fall and sometimes "broke through the fences" to the sound of splintering timbers.

Get into the Whozit game right away, and if you have had any unique experiences, write to the Whozit Editor of Radio Digest, 510 N. Dearborn st., Chicago, and tell about them.

Whozit Correction!

On page 11 of the first December Radio Digest a typographical error transposed the lines of type underneath the second and the fourth panels.

The second panel should have read: Charlotte Myers, WJR; Big Sister, KVOO; Mary Tudor, WJR and Grace McConnell, WJAX. The fourth panel should have read: Cecile Barron, KJR; Hazel Reisinger, KVOO; Eva Rautenbergs, WMAK and Helen Rauh, WHT.

HUBBY MORE LIKELY WAS "FIXING" HANDS

CLEVELAND.—Many humorous phone calls are received at WHK here, but a recent telephone call by a lady listener wins hands down. This particular lady requested WHK to broadcast a message to her husband, who was supposedly fixing a friend's Radio set. The wife thought he was playing poker, and asked the broadcasting of the message as a test of her feminine intuition.

MILLIONS OF LISTENERS LOOK FOR IMMEDIATE RADIO RELIEF

Congressmen Balk as Industry Prepares to Fight—Hoover Expresses Self—Interference Survey Aids—WGN Suit Breathes Optimism

HERE'S 'NOTHER PREFERRED BLONDE



Charlie Wellman, manager of KFWB, seems to prefer blondes. Recently we published the picture of a very pretty blonde, Peggy Mathews, and now we have here June Parker, sad blues singer, who sings exclusively at Warner Brothers' movie station in Hollywood, where women are women and men wear no hats.

WASHINGTON.—What will congress do to stop Radio interference? Now that the Sixty-Ninth Session has resumed its official duties, how long will it take to give broadcast listeners the relief they so badly need?

Factions working within the senate and house in opposite directions do not indicate that a speedy remedy will be granted, despite the suffering of millions of fans and stations whose high quality programs are being ruined by inferior broadcasters. One thing is certain. Unless congress does act—and quickly—it will have the wrath of countless listeners upon it, and millions of fan complaints may awaken the slumbering legislators.

Coordinating Committee Busy

The coordinating committee of the Radio industry, recently established here, and composed of representatives from every branch of Radio, is busily engaged in assembling facts for congress to mull over. The National Survey of Radio Interference, conducted by Radio Digest, is one of the huge masses of facts this committee is preparing to deliver to the congressional conference committee on Radio.

Aided by several hundred broadcasting stations and daily newspapers, the interference survey has brought forth thousands of intelligent complaints which will be very useful in showing how bad the situation is, and what is wanted by the public.

Hoover Expresses Self on Two Bills The Dill bill, which passed the senate, and the White bill, which passed the house last spring, clash in most respects. Secretary of Commerce Hoover has expressed himself as opposed to the Dill Radio Control bill except insofar as the preamble goes, which he favors. He thinks better of the White Radio Control bill, but is not satisfied at all with either.

The independent Radio industry favors the Dill bill.

Mr. Hoover also now feels that Congress should make some provisions in the legislation to protect the investments of the pioneering broadcasters of the country. He believes that priority, when supported by continued service and development of the art, should have consideration.

Common Law Is WGN Suit Basis

The recent victory of Station WGN in the Illinois circuit court was not based upon any federal or state legislation, but purely common law. Judge Wilson's decision, however, if it is followed by the higher courts and in other jurisdictions, means that stations with efficient established services may protect themselves and their listeners against unreasonable disturbance by stations in the same locality and subsequent in time.

"First come first served" is good law as well as a good adage, Judge Wilson points out. His decision may go a long way toward establishing property rights and priority rights in wave channels, despite what congress may decide to write into future, if any, Radio legislation.

National Survey Tabulation Continues

The National Survey of Radio Interference tabulation is not yet ready for publication. Thousands of questionnaire blanks are still being returned by tardy listeners. Radio clubs, trade associations, Radio dealers, broadcasting stations, newspapers and other organizations wishing to distribute the "kick" questionnaire to their friends or patrons, may obtain any number of the blank forms free of charge by writing Radio Digest, 510 N. Dearborn St., Chicago.

Listeners who have not filled one of these interference questionnaires are urged to do so without a moment's delay. Request a blank free from Radio Digest, enclosing a stamped, self-addressed envelope.

Celebration to Mark Close of B. B. C. Ether Activities

LONDON.—At the end of December the British Broadcasting company hands over its activities to the new corporation, and it is intended to make the final week's broadcast something in the nature of a swan song, particularly on New Year's Eve.

A special version of Humperdinck's famous opera "Hansel and Gretel" will be one of the special program items.

WHOZIT SCHEDULE DECEMBER 15-31

Eastern 12 n.	Central 11	Mountain 10	Pacific 9	Eastern 9:30 p.m.	Central 8:30	Mountain 7:30	Pacific 6:30
WHT (399.8) Daily except Sundays.				CKY (384.4) Monday, Wednesday.			
WMAK (265.6) Daily.				WHB (365.6) Tuesday, Thursday.			
6:50 p.m. 5:50		4:50	3:50	10 9 8 7			
WOAW (526) Daily.				WHK (272.6) Mondays, Wednesdays.			
7 6 5 4				WSOE (245.9) Monday.			
WOC (483.6) Daily.				18:15 9:15 8:15 7:15			
7:15 6:15 5:15 4:15				KOA (322.4) Friday.			
WMAK (265.6) Daily.				WMCA (340.7) Thursdays.			
7:30 6:30 5:30 4:30				10:30 9:30 8:30 7:30			
WHK (272.6) Fridays, Saturday.				WMC (499.7) Thursday.			
WMCA (340.7) Fridays, Saturday.				11 10 9 8			
7:50 6:50 5:50 4:50				KMOX (280.2) Daily.			
WJAX (336.9) Daily except Thursdays.				11 10 9 8			
8 7 6 5				KTHS (374.8) Daily.			
KVOO (374.8) Daily except Sundays.				WHK (272.6) Tuesdays.			
WHT (399.8) Daily ex Sun., Mon.				WHT (399.8) Daily except Monday.			
WMCA (340.7) Wednesday, Sunday.				WLW (422.3) Daily except Friday.			
8:30 7:30 6:30 5:30				WOOD (242) Daily.			
WPG (299.8) December 20 and 27.				11:30 10:30 9:30 8:30			
8:45 7:45 6:45 5:45				KJR (384.4) Daily.			
WHB (365.6) Mon., Wed., Fri.				WMAK (265.6) Tuesday.			
9 8 7 6				12 m. 11 10 9			
CKY (384.4) Thursday, Saturday.				WHT (399.8) Daily except Monday.			
KPRC (296.9) Daily except Friday.				WJR (516.9) Saturday.			
WHT (238) Daily except Mondays.				12:05 a.m. 11:05 10:05 9:05			
WJR (516.9) Monday, Wednesday.				WJK (272.6) Saturdays.			
WPG (299.8) December 17 and 24.				1 12 11 10			
WSM (282.8) Mon., Wed., Fri., Sat.				KVOO (374.8) Mon., Thurs., Sat.			
9:15 8:15 7:15 6:15				WHB (365.6) Sunday.			
WNAC (431) Wednesdays.				1:15 12:15 11:15 10:15			
				KFWB (252) Daily.			

Cupid Scores 16 Hits At KFRU

LEVELS Broadside to Eight Waiting Swains Who Propose on Hearing Certain Song. Couples Go to Japan for Honeymoon.



TIMES are changing. Romance keeps up-to-date. Cupid masquerades under the name of Mike and twangs antenna wires to spend his fatal darts. Many a matrimonial hook-up has been circled through a receiving set.

But here is the champion bull's-eye Radio romance of the year. It's a true story and comes from Columbia, Mo., Radio Station KFRU, belonging to the Stephens college. It is said to be the only broadcasting station in America controlled by a woman's college.

At one fell swoop Daniel H. Cupid let loose sixteen shafts through a song from the throat of Miss Helen Averitt and every shaft scored a perfect hit. The story is told by Miss Helen's sister, Margaret, who relayed it to Radio Digest.

"Dear me," wrote Miss Margaret, when requested for more specific details as to the names of the eight couples who were married, when and where and could she send pictures. "They're all gone to Japan now. We only knew Mr. Anderson, the foreman, who lived here in Columbia and arranged for the song. He explained it at the studio the night that the song was to go on the air. That's all there was to it. I'm sorry. Won't you write up our college station sometime, please?"

Gale H. Curtright (below) aided and abetted the Cupid conspiracy as announcer at KFRU. He warned the young engineers that the song was coming.



"Good Bye, Boys, I'm Through," sang Miss Helen Averitt (above) at KFRU, Columbia, Mo., and before she sang "through" a scattered party of engineers, sitting by their sweethearts said "good bye" to bachelorhood by popping. Corner of Cupid Studio (lower right).

By MARGARET AVERITT

IN SEVEN widely separated American towns, seven young men were anxiously adjusting the dials of their Radio sets at 6:15 one evening in the late spring of 1926. All were tuning for a 500-meter wave length, for they were exceedingly desirous of hearing the dinner hour concert from Radiophone Station KFRU, Columbia, Mo. To most of the general Radio audience this program promised nothing particularly unusual but to these seven young men it was to be a very special occasion; for if a certain selection, a song, came over the air from KFRU on this particular program, the entire course of their lives would be changed.

Outside the dusk had already fallen, stars were twinkling brightly and the clear, frosty air indicated an ideal night for DX reception.

But while these young men are preparing for this auspicious occasion let us consider the incidents that took place a few months previously. These same young men with their foreman, Bob Anderson of Columbia, comprised a party of eight engineers engaged in a large construction project in South America. None of them were married, all were passably good looking and they were collectively and individually desperately homesick.

Each evening found them gathered about a highly efficient Radio receiving set. Usually they were able to pick up some station from the

States. It didn't matter much what they heard. They were quite satisfied just to hear a voice from home, sweet home.

Then came a day when they could see the end of their task close at hand. Soon they would be on their way home and then they would be scattered over the country only to be called together again shortly, in all probability, to go as a unit to undertake a similar project in Japan. It was a lonely homes and loved ones. Out of this gloomy contemplation one of the younger men suddenly conceived a brilliant idea.

"**W**E MISS the social atmosphere. We need home comforts. My suggestion is that we all start in as soon as we return and win a wife. Let's all get married and take our wives with us to Japan."

Audacious! Astounding! Some might say a little presumptuous. But finally the last doubter was won over to the idea, because—well, eight couples would make four bridge tables and you would need an even number of couples for little dance parties.

"But, suppose the deal shouldn't go through. Suppose we get engaged and some even go so far as to get married and the contract blows up, what then?" That question suddenly loomed up, and remained unanswered for the time being because Anderson caught a signal—a voice on the 499.7 wave length—Miss Helen Averitt, soprano, and Mr. Gale H. Curtright, announcing.

"Good bye, boys, I'm through," the voice came to them clearly and distinctly. There wasn't a whisper until the whole program was finished. But immediately afterward Anderson exploded with the idea that had come to him during the song.

"How will we know what to do until we are sure of the contract? You heard that girl sing, didn't you? Well, go right ahead and rush the girls up to the moment of proposing. I'll let you know the day I expect to get the answer and you listen in for that girl to sing, 'Good Bye, Boys.' If you hear her sing that song at the agreed time you'll know it's O. K. to propose. If she doesn't sing it the scheme is off and you can take your time."

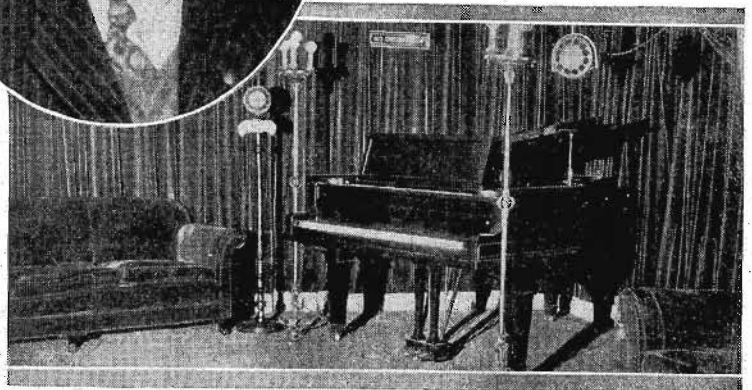
This was the plan eventually accepted by all.

AND so two months later we find them in the United States, and eager to hear a certain program from KFRU. They knew that the chief at his home in Columbia had received their orders that day. Each had his best girl listening with him, though the girls thought the song would merely signify that their engineer swains were ordered to Japan.

To these young people the dinner concert seemed very long that night, although it is only from 6:15 to 7:15. The soprano sang, obliged with an encore, and still they had not heard their song. The hour was nearly over and when at last only a few more minutes remained, the concluding number was announced. The seven engineers held their breaths while the announcer, trying hard to keep from chuckling, dedicated the next selection to "some engineers—and their sweethearts." And then, with a hint of laughter in her voice, for of course she was in on the secret, the soprano sang, "Good Bye, Boys, I'm Through."

So once more Cupid employed the mysterious electrical waves on which to launch his potent arrows—seven of them at once. But it has never been possible to ascertain how many of the young ladies accepted!

Even the guilty soprano, Miss Helen Averitt, does not know. However, some of you may go to Japan some day, and if you do, have one of the Tokio broadcasting stations put on a soprano solo, "Good Bye, Girls, I'm Through." Perhaps eight couples, playing four tables of bridge, may be listening. If they are, the truth may out and the success of this ultra modern form of courtship may be divulged to a waiting world.



Mike Worries Cinema Artists

*MANY FAMOUS
Screen Stars Fear Neither
Roaring Lions nor Wild Horses
Before Camera But Lose Nerve
in Broadcast Studios*



Ernest Torrence (above), made reputation as wild west terror in Covered Wagon, quails before Mike.



Lois Wilson (left) faltered and then wept first time she broadcast. Adolph Menjou (above) "kicks" Mike without fear.

By G. L. KING

WHAT do the stars and personalities of showland actually think of Radio and Radio appearances? Do they appear at stations only under the spur of the publicity man, or do some of them actually enjoy broadcasting? Do they condemn Radio appearances as harmful, as do vaudeville artists and some stage celebrities, or, on the other hand, do they feel it helps them with the vast audiences who daily see them in black and white on the silver sheet but who never hear their voices?

To Hollywood and Los Angeles let us journey to find answers to our questions; to stations KFWB,

Conrad Nagle (below) fears not the wrath of a woman scorned, but spare you him Radio's tin ear.



An "airy jist" is Monte Blue's (above) idea of what to broadcast, while Irene Rich (right) breathes personality into Radio.

more one appears before the mike the better it gets to be. The dry wit of Louise Fazenda is always appreciated by KFVB fans and Patsy Ruth Miller, with her vivacious personality, makes practically the same impression via the microphone that she does before the eye of the camera.

Irene Rich has a very vibrant personality, rather mature and subdued, that shows up distinctly when she talks in confidence, as she seems to do in a Radio studio.

Lois Wilson claims to have had one of the most unusual first time (Continued on page 29)

Lew Cody (below) is a regular little brother to Mike and takes delight in initiating fellow artists.



KHJ, KFI, KFQZ and KMTR to find out what we want to know, for it is only natural the Los Angeles and Hollywood stations, being right in the movie producing center of the world, would be able to tell us more about the subject than any others.

Jack Holt, Paramount's male star, who is equally at home on a pony's back as the hero of a rip-snortin' "horse" picture or as the suave man of the world in evening clothes, expressed the thoughts of many players rather nicely when he said that he, in common with practically everyone else in the cinema colony in Hollywood was roped, tied and dragged before the microphone.

"It was a terrible experience for me," said Mr. Holt. "And the fact that no one will tell me what they heard me say that night leads me to believe I have many charitable friends. No more for mine—if I can help it."

Another experienced actor of parts on almost any kind of stage in any part of the world, Ernest Torrence, confesses he has never lost the feeling of strangeness whenever he faces the mike, although a brother Thespian, working on the same lot, scoffs at the idea of Radio fright. But what else could be expected of such a sophisticated person as Adolph Menjou! Despite his idea that talking for Radio is like a vacation Menjou is seldom seen motioning his expressive hands before the microphone.

A talk with Studio Director Charlie Wellman at KFVB revealed a lot of information on our questions. Warner Brothers' KFVB, as everyone should know, is the only Radio station in the world owned and operated by a large motion picture producing corporation. All the Warner stars have appeared many times before KFVB's microphone and are seasoned Radio troupers. Some of them didn't like it the first time but they have found the

Way Back in 1917

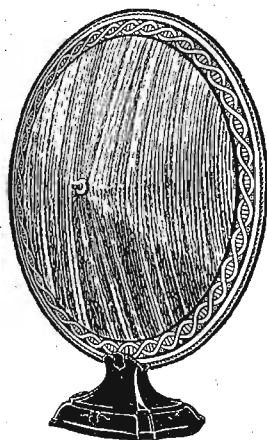
—long before the day of
radio in the home



SUCCESS always begins farther back than the public sees. As long ago as 1917, when radio in the home seemed but the fanciful dream of an imaginative few, the hands and mind of C. L. Farrand were feverishly at work developing the cone-type speaker. Then followed seven long years of experiment. Finally came perfection—and the birth of a new era in radio reception.

Today, many are endeavoring to imitate the Farrand Speaker, but have succeeded merely in copying its appearance. Its performance—acclaimed by over half a million nightly listeners—remains unchallenged.

The Eye may deceive, but the Ear never! Farrand made the first cone speaker Farrand still makes the first cone speaker!



The Farrand Senior (illustrated), with 17-inch walnut-laminated wood cone, is priced at \$32.50.

The Farrand Junior, with 14-inch mottled cone, is priced at \$16.50.

Prices slightly higher west of Rockies

Farrand Speaker

FARRAND MFG. CO., INC. · LONG ISLAND CITY, N. Y.

\$29⁵⁰



Now—

you can have full “A” power for your radio

Automatically operated from
your electric light socket

THINK of it! Full “A” battery power—the kind that brings in the far-distant stations loud and clear—all the time!

You merely connect the new Prest-O-Lite Automatic “A” Power Unit to your set and push a plug into any electric light socket. That’s all you do.

When you switch on your radio, the power of a fine, fully charged Prest-O-Lite Radio Storage Battery flows through your tubes. When you turn off your set, a silent, powerful trickle-charger automatically goes to work replenishing the current you have used. Your radio switch controls everything, which means that this unit can be operated any distance from your set—in the basement if desired.

No more bothersome charging or testing to determine condition of the battery. No longer will a rundown “A” battery limit you to local stations—or no stations at all.

See this new Trikl-Automatic “A” Power Unit at the Prest-O-Lite dealer’s store. You will like the beautiful way it is finished. You will like its small, compact size. And above all you will be delighted with its simplicity of operation and the trouble-free radio it will give you.

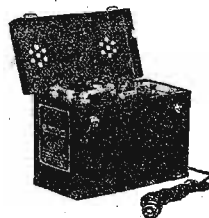
While this power unit is brand-new and the very last word in “A” power development, back of it is a company with more than twenty years of manufacturing experience. It is built to give you years of service.

There’s a Prest-O-Lite dealer near you, or if you write us we will gladly send you full details of this new unit.

Radio and battery dealers should write at once for full information covering our selling plan. There will be an enormous demand for this unit.

THE PREST-O-LITE CO., Inc.
INDIANAPOLIS, IND.

New York San Francisco



The Battery. A special Prest-O-Lite Radio “A” Battery of ample capacity. Strongly built. Leak-proof.

The Charger. Built on an entirely new principle. Absolutely dry. Silent in operation. Adjustable to individual needs. Economical of house current. Nothing to get out of order. Nothing to replace. No moving parts, no bulbs, no liquid. Entirely automatic. Built to last for years.

The Unit. Entirely enclosed in handsome metal cabinet. Only 5¾ inches wide, eight inches high and eleven inches long. \$29.50.

Prest-O-Lite

TRIKL-AUTOMATIC “A”
POWER UNIT

How to Build Bruno Regenatrol

BY THIS time you should have all the parts and be ready to go ahead with the actual testing of the apparatus to make sure that there are no defective parts and lay out and drill the panel and subpanel, preparatory to mounting the parts and wiring them together.

As a special service to readers who wish to build the set I have prepared full-sized blueprints which can be used as templates in laying out and drilling the panel and subpanel or counting the parts. The use of these templates will greatly facilitate the laying out and drilling of the panel and subpanel and will eliminate the necessity for painstaking measurement of distances from hole to hole as is usually the case when no such templates are available.

Panel Templates Available Reasonably
Copies of these templates can be obtained by sending ten cents to cover actual cost of prints and mailing. Address your requests to Joseph Calcaterra, care of Radio Digest, 510 N. Dearborn St., Chicago, and don't fail to mention that you want the Panel Drilling Templates for the Bruno Regenatrol Receiver.

It is unnecessary to reproduce the panel drilling templates in miniature here but I will give the detailed instructions for laying out and drilling the panels after you receive the full-sized panel-drilling templates.

The centers of the holes shown on the full-sized panel-drilling templates are for the parts mentioned in the list of parts given in the first installment of this series. If you substitute any other parts you will find it necessary to locate the holes to conform to the mounting holes for your parts.

Marking Panels with Templates

All that is necessary to locate the holes on the panel and subpanel is to paste the respective templates on the panel and subpanel and spot or mark the location of the holes on the panels through the template. It is not necessary to spread paste all over the panels to hold them to the panel. A dab of paste in a few places will be sufficient. If you do not have any paste handy or if you do not want to get any paste on the panels, you can cut around the template along the dotted lines leaving a space about a quarter of an inch between the edge of the panel lines and the template. Then fold over the template along the solid lines and this will serve to center the panel under the template.

After you have lined up the panel with the edges of the template take a center-punch and "spot" or mark the centers of the holes as shown by the intersections of the crosslines, through the template and onto the panel. Mark the locations on both panel and subpanel before starting to drill.

Drilling Operations

When all the holes have been spotted, take a small drill, about size No. 41, and enlarge the spot holes. This is done to avoid shifting of the mark when the larger drills are used to drill the holes through. The spot mark is usually too small to center the larger drills.

In drilling the panel and subpanel, always back them up with a piece of wood to prevent chipping around the holes when the drill comes through on the other side. Drill all holes carefully, applying only a gradual pressure. Another good method to prevent chipping is to drill the holes all the way through first with a small drill, such as a No. 41, and then drill the larger holes halfway through from each side so that they meet at the center.

The next operation is to drill and countersink the holes spotted through the templates. The sizes of the holes mentioned below are those necessary for the parts mentioned in the list of parts. If you substitute other parts you must drill the proper size holes required for such parts.

Now proceed to drill each hole with a

PART II: Panel Drilling Instructions and Suggestions; Sizes of Drills to Employ; How to Test the Various Parts Before Assembly to Assure Successful Operation Later

By JOSEPH CALCATERRA

No. 18 drill. This size of drill serves as a good clearance hole for all 6-32 screws, and as a starter for the larger holes which can be enlarged later.

Sizes of Drills to Employ

All the holes marked "A" should next be drilled out with a No. 10 drill; the holes marked "B" with a 1/4-inch drill; the one marked "C" with a 3/8-inch drill; those marked "D" with a 1/2-inch drill; the one marked "E" with a 5/8-inch drill; and those marked "G" with a 1-inch panel cutter.

In cutting out the large 1-inch holes you will find it necessary to first drill a smaller hole for the pilot of the panel cutter. You will notice that some holes have

visual part and if you perform these tests, you can build the receiver with the assurance that when it is completed, it will be sure to work. It is much easier to test the parts before assembling them into the receiver than it is to try and locate a defective part when they are all wired together.

A simple test apparatus can be rigged up by connecting a voltmeter in series with a B battery. The ordinary pocket voltmeter used to test B batteries will do. If you use the Jewell 135C tip jack voltmeter you can use the high voltage scale of this meter to advantage. Connecting the battery and voltmeter in series will leave two free ends or test points, one from the voltmeter and the other from the battery. These two leads are the ones

make sure that there is no break in any of the coils and to be sure that the coil ends are properly connected with the terminals.

Be sure to mount the coils as shown in the photographs, figures 3 and 4. This arrangement is made to permit the knob for the tickler coil to be placed near the bottom of the front panel, thus giving a better appearance to the front of the set.

The fixed coupler coil, placed at the other side of the condenser unit is provided with brackets that set the coil back from the panel enough to allow the Radiohm to be placed at a point such that the knob of the Radiohm makes a symmetrical arrangement with the knob of the tickler coil on the front of the panel. An extra rheostat knob to match the knob on the Radiohm should be provided for the tickler coil shaft.

Inspection of Sockets and Radiohm

Next disassemble the sockets and make sure that the spring members have not been bent out of shape.

Connect your test circuit across the terminals of the Radiohm to make sure that there is an even variation in resistance as you turn the knob, with no open circuit throughout the range of the instrument. Make a similar test on the rheostat.

Test across the terminals of the battery switches and check up to see that you have a closed circuit when the switch is in the "ON" position and an open circuit when it is in the "OFF" position. Such tests on simple apparatus may sound absurd but I have personally had experience with switches which have been short-circuited and were "ON" all the time.

Testing A-F and R-F Transformers

Next take the untuned radio frequency transformer and the audio transformers and test the windings to make sure that there is no open circuit in any of the windings. When testing across the terminals of the audio transformers you will get only a very slight deflection of the voltmeter needle when using a 22 1/2 or 45-volt B battery in your test circuit. This is due to the resistance of the wire used in the windings. The important point is that you get some deflection to show that the circuit is closed. The high resistance of the transformer windings makes it necessary to use a battery of at least 22 1/2 volts in the test circuit. If you use a small battery, such as a 1 1/2-volt C battery, you will not get a deflection.

After testing each of the windings, that is across the "P" and "B," and across the "G" and "E," to make sure that the windings are intact, test across the "B" and "P" to make sure that the two windings are not making contact. Also test between the "E" terminal and the case of the transformer to make sure that the case is not connected to either winding. Test across the terminals of the choke coil to be sure that the winding is intact.

Amperites and Other Parts

Next test across the terminals of the Amperites to see that there is no open circuit in any of them.

Next test across the terminals of all the fixed and Bypass condensers. There should be no deflection of the voltmeter needle in the tests on the fixed and Bypass condensers.

Test across the jack terminals to be sure that the terminals are not short-circuited.

Now to test the Multiplug. Insert the plug into its socket and then test between each wire terminal and the corresponding color terminal of the socket. This test will do two things. It will check the contact that is being made between the receptacles of the socket and the spring tips of the plug, and it will also check the wire connections so that you will be sure that the color code on the socket corresponds with that on the wires.

It will pay you not to take anything for granted but to make all the tests.

(Continued on page 29)

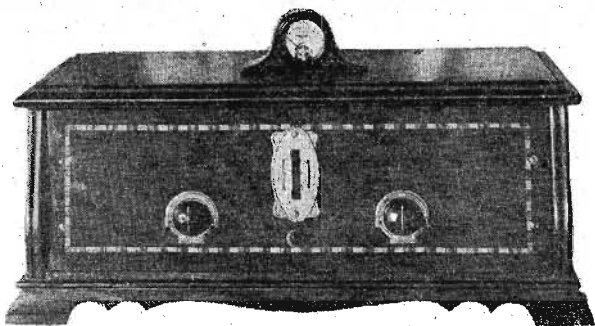


Figure 2. The completed Bruno Regenatrol, with its Lignole panel, Bruno dial, Corbett cabinet and Jewell meter, is indeed beautiful. For careful panel and subpanel drilling, send ten cents to Radio Digest for full-sized blueprint templates.

a solid line outer circle while others have a dotted-line outer circle. The circles indicate that holes so marked should be countersunk for 6-32 flat head or oval head screws. On the front panel, the holes shown with a dotted-line outer circle should be countersunk on the front side of the panel. On the subpanel, those shown with a solid line outer circle should be countersunk on the top side of the subpanel (the side on which they were spotted), while those shown with a dotted-line outer circle should be countersunk on the bottom side of the subpanel (the reverse side from that on which they were spotted).

Why Parts Are Tested

If you have followed directions carefully the panel and subpanel will now be ready for the parts.

Regardless of the care that is taken by the manufacturers of the parts to make sure that they reach your hands in good condition, the handling which some of the parts receive in transportation sometimes injures them and renders them unsuitable for use in a receiver.

While this chance is not great, you will find that it will pay you to test each part carefully before mounting it in the set and wiring it into the circuit. It takes only a very short time to test each indi-

vidual you can use to test across windings to discover any open circuits in windings or any closed circuits in condensers.

Testing and Mounting Bruno TK Unit

We will first take the Bruno TK unit. This unit comes assembled so that the secondary winding of each R-F transformer is automatically connected across the terminals of its associated variable condenser, so that a test across the terminals of the variable condensers means nothing as the connection across the coils will show a closed circuit.

It is advisable, therefore, to disconnect the coil from across the condenser by loosening the connections at one end of the bracket, which mounts the coil to the condenser. This procedure is a little troublesome but it is worth while. Then connect the test circuit, consisting of the battery and voltmeter, across the condenser terminals and, turn the rotary plates of the condenser throughout its range.

If the voltmeter needle does not move from zero, it shows that there is no short across the plates and the condenser is suitable for use. If there should be a deflection, the plates of the condenser are shorted and should be adjusted before mounting the unit on the set. This test should be applied to each condenser. Then test across the terminals of each coil to

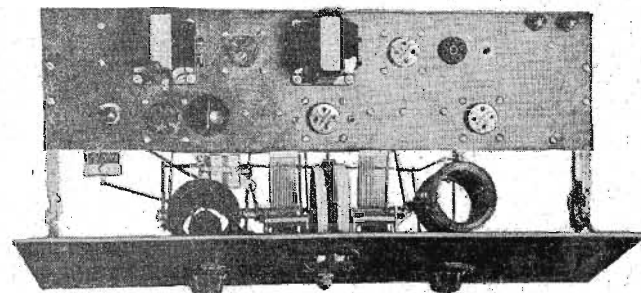


Figure 3. Looking down on the top of the assembled and completed Regenatrol. Note the relative positions of the various parts of the set.

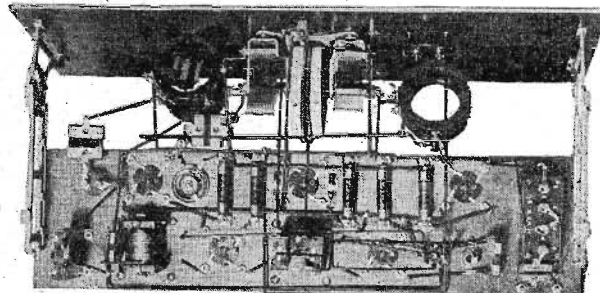
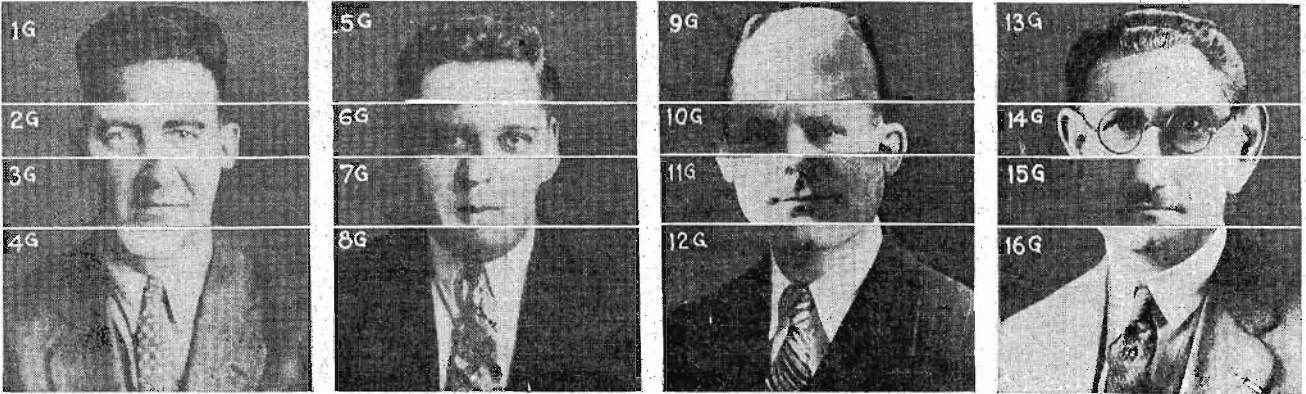
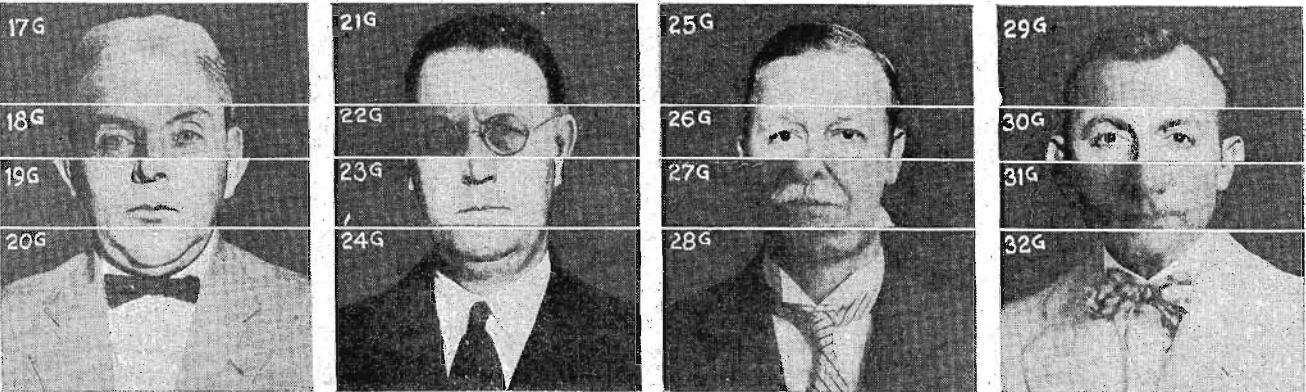


Figure 4. If the Regenatrol, as shown in figure 3, is turned upside down on a horizontal axis, this view of the bottom of the set is obtained.

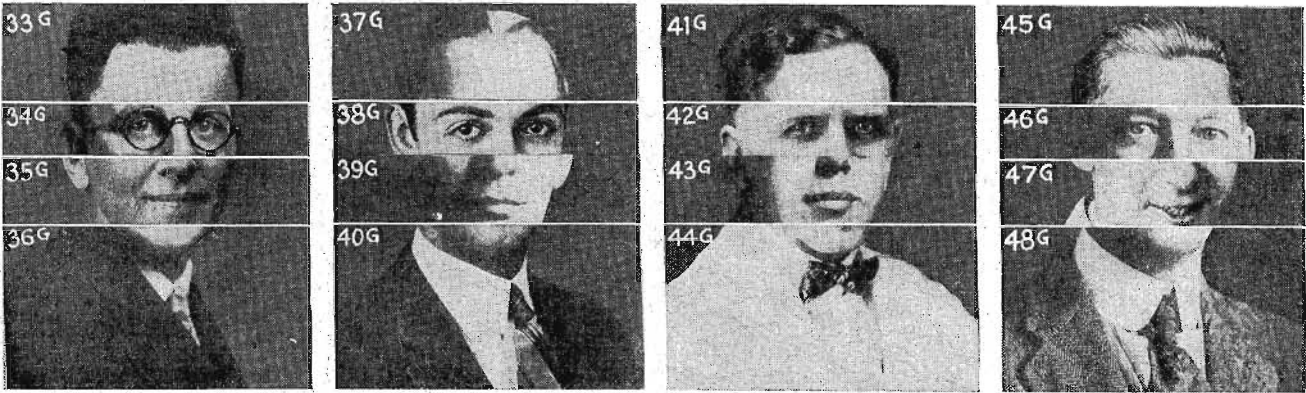
SOLVE WHOZITS AND WIN \$26,000 PRIZE AWARDS



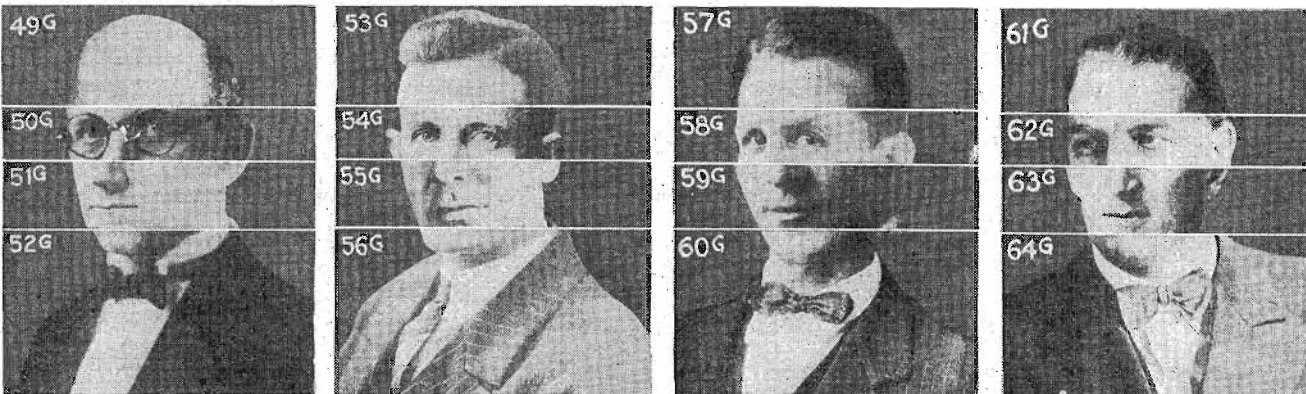
The following artists are in above panel: Bob McOsker, WOOD; Roy Clark, WOOD; "Dok" Eisenbourg, WNAC; John J. Fanning, WNAC.



The following artists are in above panel: C. C. Sowerby, KPRC; J. Harry Kobusch, KPRC; Evans Prosser, WPG; Dr. A. J. McClure, WPG.

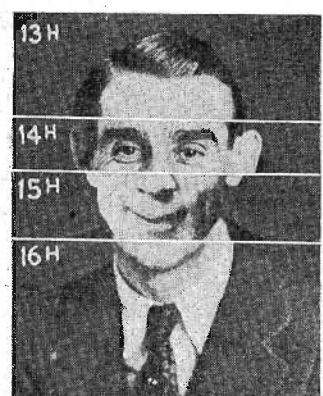
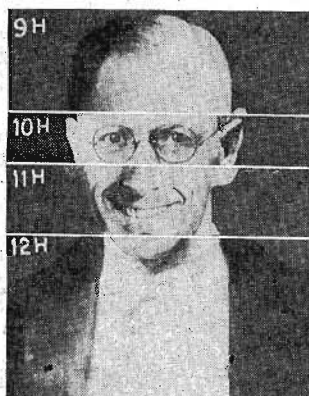


The following artists are in above panel: Ralph Freese, KOA; Freeman H. Talbot, KOA; Wally Allen, WMC; Harry O. Nichols, WMC.

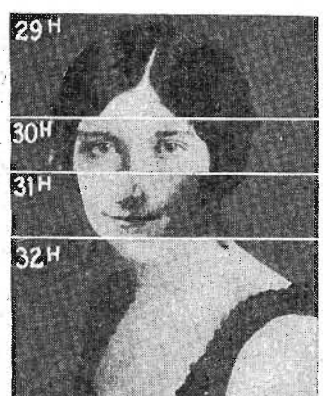


The following artists are in above panel: Jean Goldkette, WJR; Richard Rolph, WJR; Prof. Harry Evans, KVOO; Parson L. E. Lepper, KVOO.

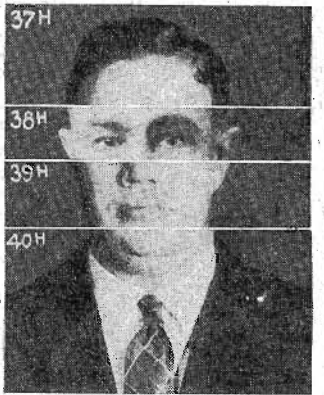
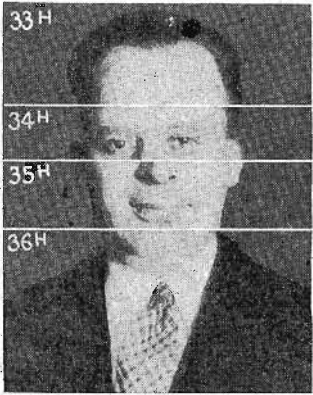
ASSEMBLE THESE PORTRAITS OF RADIO ARTISTS



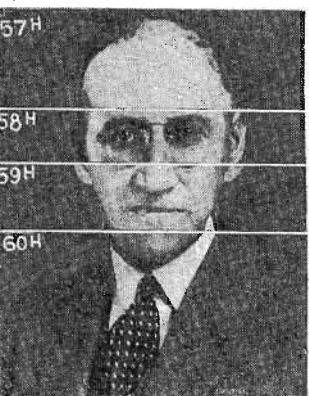
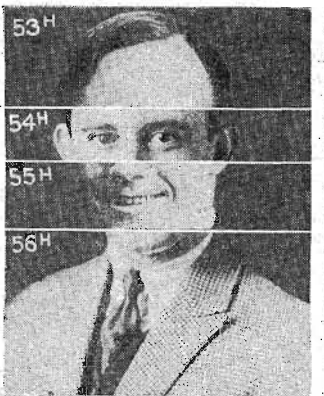
The following artists are in above panel: Herbert Sadler, CKY; Hugo Heyn, WOW (formerly WOAW); Axel Christensen, WHT; Billy Williams, WJAX.



The following artists are in above panel: Eleanor Gilmour, WHT; Anna Canova, WJAX; Grace Leidy Burger, WOW (formerly WOAW); Kathryn Baird, CKY.



The following artists are in above panel: Ed Cody, WHK; Al O'Mara, WHK; John G. Heyn, KTHS; E. M. Matthew, KTHS.



The following artists are in above panel: Fred Smith, WLW; Tommy Reynolds, WLW; Edgar H. Twamley, WOC; E. John Richards, WGC.

GOODY GOODY GIRL

AT LAST Lois discovers That She Has Been Trapped in a Human Spider's Web, but She Is Strong Enough to Fight, and Bones Are Cracked

By MERLIN MOORE TAYLOR

TRICKED by the dull monotony of life in the little town of Paradise, Lois Sylvester started out to visit a friend in a neighboring town. A care-free neighbor boy, Herbie Coles, offered her a lift in his car. She slapped him when he tried to kiss her. Aboard the train, after dodging her vigilant step-father at the station, she meets Raymond Lancaster and Mrs. Mildred Gayton, each acquainted with the other and chance fellow passengers on the train. An accident prevents Lois from leaving the train until she reaches Chicago. She becomes the guest of Mrs. Gayton who furnishes her with pretty clothes and conveys her into the swirling night life of the city. There she finds a bitter under-surface enmity between Mrs. Gayton's intimate friend, Neil Becker, and Raymond Lancaster, they all go to the races. Lois places a bet on a horse favored by Lancaster against the advice of Becker, to whom she entrusts the money for the bet. Herbie Coles appears and bets his last dollar on Becker's favorite. Herbie loses and Lois wins big odds. Before she can get the money she is taken away by Herbie. They are on some mysterious errand that requires speed. Lois doesn't know what it is all about, even when they are arrested for speeding, taken to a village jail and Herbie runs away leaving her to stand the gaff alone. She puts in a call for Lancaster. Herbie had told the chief she is a friend of Victor Jermin, a member of Becker's crowd. Lancaster rescues Lois from the little jail while the whole force is out chasing bootleggers. While he is taking her back to Mrs. Gayton's he attempts to embrace her. She repulses him. He confesses that he loves her and then reproaches her for trying to trap him. He explains that Becker had told him she was merely posing as an innocent country girl to compromise and blackmail him. She is stunned by this information and barely answers as she jumps out of Lancaster's car and runs up the steps to her friend's apartment.

CHAPTER XI

More Revelations

WHEN Lois threw open the door to Mildred Gayton's apartment it was to find Neil Becker sprawled in an easy chair, his lean, saturnine face the picture of a thunder-cloud, his black eyes smoldering. At sight of her, however, his features lighted up and he sprung to his feet and came toward her, outstretched hands inviting her own.

"This is luck," he exclaimed, "I was expecting Mildred . . . all set to give her the devil . . . instead, you walk in—come give us a kiss, sweetheart."

His manner was assured, his smile anticipative. Her wrath and indignation that he should have slandered her, steadily melting for the last hour, touched white heat in a single bound.

"You dog! You cad!" she burst out furiously. "After spreading vile, uncalculated lies about me—"

His lids narrowed to mere slits behind which the black eyes became glittering pin-points. "What are you talking about?"

"Raymond Lancaster has told me—"

"Lancaster, eh? You've been with him? Well, you needn't give the details of what he said. I can guess he didn't leave out anything."

"You admit—"

Becker's shrug was nonchalant. "Admit? Yes. Anything you wish. Lies? Why not, so long as they served a purpose."

His brazen effrontery made her gasp. "What do you mean by that?" she demanded.

"I COULD tell you to go to the devil with your questions but I won't," he retorted coolly. "Here's how it is, Lancaster's my enemy. He's been after me since I sold some stocks to a pet customer of his. They were no good, but that was the other fellow's lookout. It wasn't Lancaster's affair but he took it up . . . been hunting a chance to do me . . . thinks he'll land me in a webby suit ultimately by violating the blue-sky law—anyhow, he's had an idea he could use you. You're green, soft, a bit gone on him in the bargain. He'd twist you around his finger by making love to you, use you to get at me—look here! You've got to cut Lancaster out. I won't have you seeing him."

"What have you got to do with it?"

"A lot. I'm crazy about you. I wanted you. I've wanted you ever since you came

here. I mean to have you, too. You're sweet, alluring, desirable. Come here!"

A long arm shot out to seize her, missed as she backed precipitately; and loy terror struck her. Once more the mask was off, just as it had been that time as they danced in the night club. Again that sinister thing she had seen then leered out at her; again she had a sensation of bared teeth and unshathed claws.

"Come here!" he repeated and reached for her again.

"No! Keep away from me! Mrs. Gayton—" She was fighting off panic, trying to keep her wits, figure a way out—

wrist from behind and drew her arm around against her back. She began to use her knees and her head against him but the arm about her dragged her to him and smothered her struggles against his body.

"You might as well learn that I'm master right now," he grated. "I'm going to tame you, you little wildcat. I'm going to make you go down on your knees to me before I'm through. Give me a kiss!"

His weight upon her chest began to bend her inexorably back over that encircling arm. She silently exerted all her strength to resist his efforts to find her

Sent Your Blank?

CONGRESS convened December 6. That means that every Radio listener must bring every iota of strength to bear upon that body if legislation for the control of Radio is to be forthcoming.

Many important problems besides Radio are on its calendar. Many issues which seemingly have larger vote-earning possibilities will be crowded ahead of the Radio bills. It is up to YOU and I, and YOUR friends and MY friends, to show OUR Senators and Congressmen just how many votes are behind the cry for improved Radio conditions.

Senators and Representatives have a habit of working hardest on measures in which the people are most interested. They gauge this interest by the number of letters, postal cards and telegrams they receive from their constituents. Need I say more? And if you haven't filled in a questionnaire for the National Survey of Radio Interference, which is being employed by Radio Digest as a lever for legislation, send a stamped self-addressed envelope today for whatever number of blanks you require. Enough said.—THE EDITOR.

"Mrs. Gayton?" He laughed mockingly, with his lips alone, showing too much of his teeth. "Mildred's out. I'm tired of her. I want you. I'll turn her out tonight. Come here!"

She stared at him, open-mouthed, comprehension beginning to dawn upon her horrified brain.

"YOU little fool!" he snapped. "Have you been blind as well as dumb? I own this place, every stick in it. I pay the rent, the maid—why, every mouthful you've had here, everything that's been given you, the very clothes you're wearing, has come out of my pocket. You're even sleeping in my bed and—"

"And Mrs. Gayton—?"

"Is mine, too. God knows I've paid for her. But she's through. You get her place."

"Oh!" The insult was like a blow in the face. "You unspcakable dog! You ought to be tarred, feathered, ridden on a rail, shot!"

"You're not down south now," he sneered. "That stuff doesn't go. A Sylvester doesn't mean anything. You're no better than a tramp. If you're going to sponge on me, I'm going to have something for it."

He came toward her again and her eyes flashed desperately about for some weapon. His walking stick lay on a chair beside his hat. She snatched up the stick.

"Take this, then," she cried and swung with all her strength at his head.

Becker's left arm jerked up protectively in front of his face and the cane was shattered across his forearm with a sickening sound of bruising flesh and cracking bone. His teeth clicked together, his face drained white, a foam forced its way between his lips as he clutched at his arm.

"You little devil!" he gasped. "I'll pay you back for this. I'll—"

His agony incited her pity for all her hatred of him. "I'm sorry," she said. "You drove me to it. Now," she tossed away the broken half of the stick and went up to him, "if you want me to call a doctor—"

SUDDENLY he lunged at her and his uninjured right arm went around her waist. Long fingers clamped upon her

lips with his, knowing that it was only a question of moments before he would win and she would feel the caress of his besmirching mouth.

Relief came unexpectedly. A key clicked in the lock. Becker released her with a suddenness that sent her staggering and whirled to face the door. Mildred Gayton stood framed there and her jade eyes narrowed. Then she pushed the door shut and when she turned back her face was adamant in its hardness.

"I might have known it would turn out like this," she said with a bitter, mirthless little laugh. "The girl I befriended, that I loved like a sister, that I thought was pure and innocent—"

"Wait a minute," begged Lois.

"You shan't have him!" Mrs. Gayton's voice rose to a shrill pitch. "He's my man! Do you understand? He's mine and I'll hold him. I've held him against prettier, smarter, more clever girls than you and I'll hold him against you, too. He's told you he's tired of me, hasn't he? That he's in love with you? That he'll turn me out and give you my place? He told that to the others, too, but I kept him. I'll keep him now and no damned little hussy—"

"STOP!" Lois shot the word at her in a tone that brooked no opposition. "You never were more mistaken in your life. Look at this!" She held out her wrist to exhibit the marks where his encircling fingers had ruthlessly left their imprints upon her flesh.

"Look at that!" Her forefinger indicated the pieces of the broken stick upon the rug. "Look at his arm where I hit him! Now, put those things together and tell me if I'm capable of what you said."

The jade eyes of her hostess followed where his encircling fingers had stood, absorbing the significance of the girl's bruised wrist, the broken cane, the arm which dangled at Becker's side. Then with a little cry of "Neil! You're hurt" she darted to him. Forgotten was his betrayal of her love, forgotten that she should be begging forgiveness of the girl she had so wrongly accused, forgotten everything but that her man was injured.

Lois shrugged and turned toward the hall that led to the room she had been occupying. Ten minutes later she was

again wearing the things she had worn away from Paradise and the battered suitcase held the few pitiful things that had been hers in the first place. She stole to the door. The hall was clear. She picked up the suitcase, tiptoed to the kitchen, unlocked the back door, passed through it and down the rear stairs of the building and emerged in the alley.

As she passed the servants' entrance a girl who had turned into the alley from the street a moment before glanced at her sharply, then touched her on the arm. Lois looked up, recognized the maid, Suzette.

"You're going away, miss?" she asked. "Yes, thank God!" Lois spoke with heart-felt sincerity. "I'm done with Becker, Mrs. Gayton, Victor Jermin and all their rotten kind forever."

"I'M GLAD to hear you say that, miss. They are a rotten lot. You don't belong. You never could belong. I've known that ever since you first came here. There've been times when I was of a mind to speak to you—well, you've found them out for yourself, just as I hoped you would. Now—are you going back home, miss?"

"No," said Lois. "I'm not going back home. I don't belong to the life there, either. I belong right here in the city. I'm going to stay, fight . . . the city shan't down me . . . it may be a long, hard struggle—"

"The first thing you've got to have is a place to stay," said the other, going with practical-minded efficiency straight to the heart of things. "If you've got no other plans, I've a sister that keeps a rooming house on the North Side. It's nothing swell . . . most of the roomers are working people . . . but it's clean and respectable and the rates are moderate."

"Give me your sister's name, the address and directions how to get there. I can stay there tonight, anyhow."

Mrs. Trickett, Suzette's sister, it developed lived in that region of small homes, boarding and lodging houses west of Lincoln park a few blocks. Lois reached it by a street car with one transfer at Center street, as the maid had directed. Mrs. Trickett had not, as Lois had feared, retired despite the lateness of the hour.

MRS. TRICKETT—ample of figure, shrewd of face, kindly in voice, motherly in attitude—looked askance at the girl who came to her door out of the night. Mention of Suzette, however, proved an open sesame. Her sister had mentioned Lois more than once. She would be glad to give her a room.

It proved to be a small room, three flights up. It had only a bed, a dresser, a couple of chairs and a stationary washstand but it gave Lois a feeling of ease and peace she had not experienced in many days.

"It's better than that cell," she told herself. "It's even better than Mildred Gayton's, now that I know how her luxury is obtained."

When she was ready for bed she counted her money. Thirty dollars and some cents. Four dollars would go to Mrs. Trickett on the morrow for a week's rent. She would have twenty-six left. With careful managing it would last two, perhaps three, weeks. A lot could happen in that time.

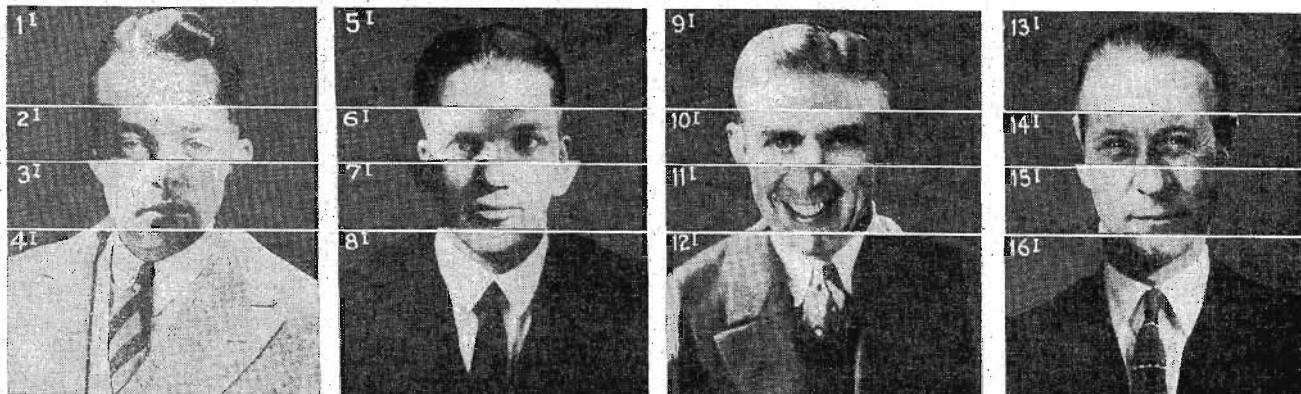
She wasted no time regretting that she had yielded to Neil Becker's suggestion that he keep for the time being the six-hundred odd that she had won at the races. It wasn't likely he'd give it to her now. A man who dealt in worthless stocks, who would try to take advantage of a young girl, would be capable of anything.

"He was right when he said for me to kiss my ten dollars goodbye," Lois murmured sleepily as she turned off the light and drew up the covers. "I hope he has to spend it all for splints and bandages for his arm."

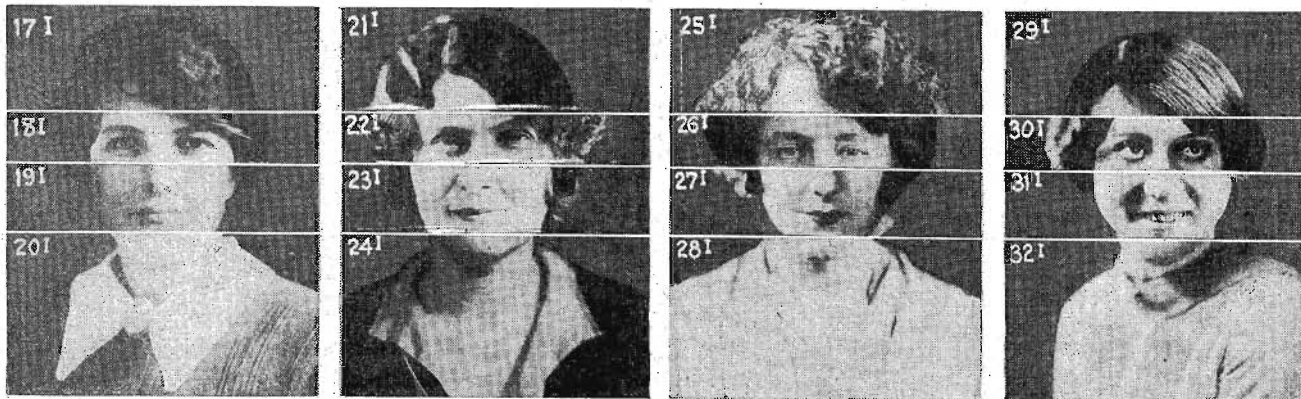
Tomorrow, she decided, she would see McManus and take him up on his offer to slug in his cabinet.

Awakened at last to the perils that surrounded her Lois starts out to find a job and discovers that she is involved in a sensational highway murder. Victor Jermin proposes and Mildred Gayton asks forgiveness. One amazing situation after another follow the adventures of the little Goody Goody Girl from Paradise as you must not fail to read the next installment in Radio Digest.

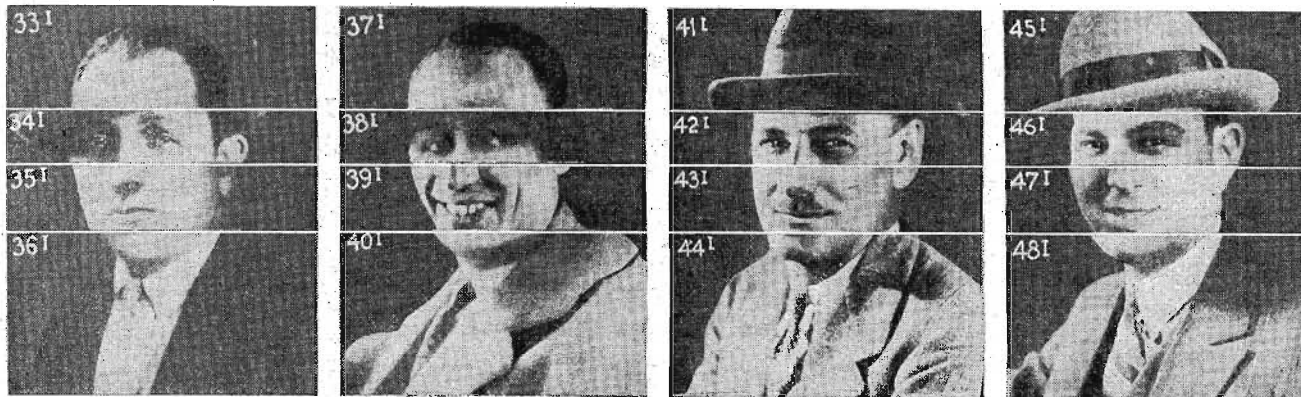
FASCINATING AND INSTRUCTIVE—THAT'S WHOZIT



The following artists are in above panel: Monte Blue, KFWB; Jack Keefe, WSM; Melvin Dix, KMOX; Elmer Ibre, WSOE.



The following artists are in above panel: Mrs. M. H. Goldschein, WSM; Mrs. Louis Warfield, WSOE; Jacquot Jules, KMOX; Patsy Ruth Miller, KFWB.



The following artists are in above panel: Al Hoffman, KJR; Harold Ramsey, WMAK; Roger Bower, WMCA; Sam Martin, WHB.



The following artists are in above panel: Dorothy Curry, WMAK; Jeanette Plotz, WMCA; Donna Taylor, WHB; Molly McNeill, KJR.

WOMAN'S PROGRAM INDEX (Daily Unless Indicated)

Household Economics, Women's Hour, Etc.

Table listing radio programs for Household Economics, Women's Hour, etc. Columns include Eastern, Central, Mountain, and Pacific time zones with program names and times.

Table listing radio programs for Eastern, Central, Mountain, and Pacific time zones. Includes programs like 'Aunt Sammy', 'Housewives' hour', and 'Market hints for housewives'.

Table listing radio programs for Eastern, Central, Mountain, and Pacific time zones. Includes programs like 'Fashions and Sewing', 'Women's Clubs', and 'Interior Decorating'.

Table listing radio programs for Eastern, Central, Mountain, and Pacific time zones. Includes programs like 'Health and Beauty', 'Child Care; Training', and 'Interior Decorating'.

LISTENING IN ON THE WOMEN'S PROGRAMS

Nellie Taylor Ross, Governor of Wyoming, recently dedicated the new Gimbel Brothers store in Philadelphia to the women of the country. The dedicatory address was broadcast by WIP and WGTB...

SHORT WAVES

By Marcella (Continued from page 2) tor Freeman Talbot, who came up to Radio Digest office during his trip to Chicago to broadcast the Army-Navy football game...

3 OUTSTANDING MODERN TYPES of Cunningham RADIO TUBES. Now at Lower Prices. CX-300A, CX-112, CX-371. TAKE immediate advantage of these lower prices. Bring your radio set up-to-the-minute. Install the new Cunningham Super-Sensitive Detector Tube...

Radio Digest

Illustrated

Reg. U. S. Pat. Off. & Dom. of Canada

Published by the
RADIO DIGEST PUBLISHING CO.,
(Incorporated)

510 North Dearborn Street
Chicago, Illinois
Telephones: Superior 7323, 7324, 7325, 7326, 7327

E. C. RAYNER, Publisher

Eastern Office, Park-Lexington Building, 247 Park Ave.,
New York. Telephones: Ashland, 8144, 8145, 8146

Member of the Audit Bureau of Circulations
241
PUBLISHED SEMI-MONTHLY

SUBSCRIPTION RATES
Yearly in U. S. and Possessions and Canada, \$3.00
Foreign Postage, \$1.00 additional. Single copies, 15 cents.
Vol. XIX December 15, 1926 No. 5

Good and Bad Ether Ads

OUR comments last issue on the subject of mismanaged broadcasting stations have been taken amiss by some broadcast advertisers and others who were contemplating using the ether waves as a means of creating good will. Evidently the similes were not made plain.

We wish to reiterate our statement, published many times previously, that good broadcast advertising is the most powerful good will builder and creator of future sales yet known to man. Please observe the word "good."

At the present time, direct sales messages and price list announcements are not considered the things to broadcast. The only accepted form of ether ads thus far accepted by the public are musical programs of high quality, be they classical or popular, travelogues, and instructive talks or lectures.

The musical program is simply labeled as sponsored by a certain concern or individual. The travelogues, talks and lectures may suitly, never abruptly suggest the employment of the services or products of the firm subsidizing such programs. When presented in this fashion, broadcast advertising has indeed a tremendous appeal, entering the home as an invited guest and obtaining the undivided attention of the listener.

As a matter of fact, many toll or commercial broadcasting stations are charging entirely too little for their time, based comparatively upon the good will possibilities of magazine and newspaper advertising.

And conversely, many commercial broadcasters charge entirely too much for their time when all they accomplish is chattering up of the already congested ether with direct sales messages, and this sometimes at the cost of destroying high quality programs emanating from first-class stations on closely neighboring wave lengths.

WGES, WGN and The Public

OCCUPYING first attention in many editorial columns during the past few weeks has been the WGN vs. WGES injunction suit. Judge Francis S. Wilson, of the Circuit Court of Cook County, Illinois, dissolving the preliminary injunction against WGES interfering with the broadcast programs of Station WGN, has ruled that "if the defendants (WGES) use a wave length in closer proximity than the one stated (one closer than fifty kilocycles of WGN) it must be at the risk of the defendants (WGES)."

That ruling, if it is followed through by suit for damages against WGES in the event that station does not stay far enough away from the pioneered and popularized wave channel of WGN, should do much to clear the air of the present congestion brought about by the lack of adequate federal legislation.

WGES maintains that selective sets in Chicago can separate the two stations satisfactorily even when WGES is but forty kilocycles away from WGN. What is meant by "selective sets" is a question. We grant that such sets are obtainable, but the average listener does not possess such a receiver.

After all, broadcasters should be so free from interference as to make their separation possible by the cheapest and most humble forms of Radio sets employed by persons not blessed or cursed with an abundance of wealth.

The Interference Survey

RADIO DIGEST thanks the many newspapers and broadcasting stations which have helped in its National Survey of Radio Interference. By the organized effort set forth many valuable data have been obtained which, when tabulated, not alone will aid official Washington in formulating a worth while Radio law, but will surprise many broadcasting stations which feel themselves such essential factors in the scheme of things.

When the tabulation is complete, nothing will be left unpublished. Stations which the public despises since their jumping activities have made them thorns in the ether, will find their names listed in the proper order, voted there by an indignant invisible audience.

RADIO INDI-EST

"Peace on Earth Good Will Towards Men"

Let all the world with love give praise
Carols of the yule tide;
While chimes of all the churches ring
By every fireside.
The ethereal space out overhead
Is ringing with good cheer
Tune in then by your cozy hearth
To bring its comfort near.

"Peace on earth, good will towards men"
From all the stations sound;
Just sit at home, tune anywhere,
To hear where songs abound.
A privilege to live today—
With all these marvels here.
Making Christ and Christmas time
To every soul more dear.

RHEA SHELDON

A Note From the Tromboner

Hello, Indi: What's all this about deporting me? And having the Limers maltreat me in dear old Blighty? You should be ashamed of yourself, if such a thing is possible with a newspaper man.

Was in Chi last month. Ya gotta hand it to the Radio waves from the Wrigley building. It took me five minutes to find a loop hole in the traffic large enough to let me slip across Michigan boulevard. And said waves do it at 136,000 miles a second.

Stopped in at a cut rate Radio store and a city slicker wanted to sell me a condenser with alemetric system. Just as if sewing machine oil didn't do the trick.

While admiring the Tribune Tower another slicker came up to me and wanted to sell me the exclusive rights to broadcast. Said he was Mr. Tribune himself. I didn't want to take him up on it because I had only \$397 with me and he wanted \$500. So he said it would be all right to leave the \$397 with him as first payment. He gave a receipt, so I guess I can't lose by that eh, Indi?

"Nother guy said to me, "Are you from Wisconsin, mister?" I said, "Yes." Then he told me he was an inventor and he had a scheme of keeping the lake level up by gathering in all the worn Radio waves after you got through using them on the Radio and putting them in Lake Michigan. I don't know if it will really work but he had an honest way about him so I let him have \$100 and he said he would never forget me.

Then there was Mr. And of Sears And Roebuck. He was very high toned. He told me that his concern was not going to issue any more catalogues but that they are going to broadcast them. He offered me the job of chief announcer at 60,000 a year per annum. I said I'd take it and gave him \$600 to show my good faith that I would be on the job when they started. Pretty soft, eh?

I sure cleaned up on my Chicago trip, all except some tubes I bought. A store had an ad, "Radio Tubes—while they last—10c a piece." I bought a dollar's worth and when I got them home they wouldn't light. So I wrote to the store and they wrote back and said you must of got them just as they wore out. Hoping you are the same.

THE THIRD TROMBONE PLAYER

Oh, he had a way about him, did the third Trombone player.

Raucous voice of INDI: "Sa pity he don't weigh more!"

"NuRrie RimEs%/? (Dam that period)

HiB didle de dDdDel,
The Sheko PIAid a fiddel &—
AND HIZ Cheba suNg ov tHe Moon &—
Hit made tHe thurd Tromboneo grin—
As he wipped offen his chin—?
Too rede Whut MaRcellie rote ov tHe loon—%/?
Yours truly,
OLD KING TUTT,
HIZ 英 皇 自 我 自 封.

No, "Old King Tut" Did Not Violate Mr. Volstead's Act, before typing off the above. His only alibi is that his portable "Grona" was trying to keep up with the heterodynes, new stations, etc., oozing forth from his loud speaker as he attempted to concentrate on this masterful writing.

Whozit?

Who is it took away our beer,
And put a heavy tax on cheer?
Who said it surely is a sin,
To mix highballs with rye and gin?
Whozit?

Who is it said he picked up Mars,
And heard the rumbling of her motor cars?
Now wouldn't that wreck your Leyden jars,
And make you curse like Southampton Tars?
Whozit?

Whozit says he'll give a prize,
To those that have good cars and eyes?
Don't know his weight; don't know his size,
But he's one of the best of regular guys?
Whozit?

ARTHUR C. STOWELL

"Hoover Says Boom Year for All," sez the Chi Tribune. Whereupon we wish to comment before signing off. Yes, Yes, Herbert, we have indeed had a boom year, especially in Radio Broadcasting Circles, with which you are undoubtedly familiar. Firststnce, during 1926 we have added nearly a hundred new stations which are now bombastically booming forth and jamming up the air and wave lengths which were once upon a time 98-44/100ths per cent pure.

INDI.

Trying to Separate 'Em



Condensed

BY DIELECTRIC

While the sending of messages to remote parts of the world may carry little of interest to many in the Radio audience, there must be those to whom these personal messages from civilized communities to desolate centers carry a romantic tinge and something of pathos. Broadcasting from the studio of Station KDKA to various individuals in the frozen North was a feature of just such import upon a recent occasion. We who listened heard fathers addressed by members of their family in the comfortable surroundings of city life, while they were engaged in endeavors calculated to increase the scientific knowledge of mankind. Prefaced by remarks from the station's announcer to the effect that this represented the first attempt ever to reach so far north with broadcast messages, it left one with a vivid mental picture of the surroundings of the distant relatives of friends eager to receive these greetings. It was out of the ordinary.

It was humanly impossible to absorb all of the rich offering the new broadcasting company had in store for us on their inaugural night. Possibly the intent of those in charge of the program was to disclose to what extent cooperative effort could succeed in supplying the majority of American listeners with the very best talent obtainable. Possibly without a dissenting voice every tribute to Titta Ruffo would be sanctioned by the entire body of listeners. Here is a voice lending itself to the multitude of tone shadings necessary to a conveyance of human emotions, deftly managed by one of the greatest operatic singers of the generation. A voice capable of tremendous volume, when such is required, it could as easily register the veriest pianissimo without loss of that rich quality so notable in the singing of Enrico Caruso. Add to his work the playing of Harold Baur in Chopin's S sharp minor scherzo, the inimitable wit of Will Rogers and the New York Symphony orchestra, little was needed to make this an unforgettable program. The pity is that "Our Mary" could not have chosen numbers better suited and far more characteristic than she sang.

There remains, possibly will remain for some time, the habits of a strongly criticised procedure which turns many would be followers to stations without these practices. One of the most objectionable interludes in any program is that devoted to the reading of telegraphic messages, yet the practice continues unabated from some of the broadcasting stations marking their origin years back. WOS, Jefferson City, is an offender of the first water and seems to revel in the fact.

Another of those good organ recitals from Station WCCO, Minneapolis-St. Paul, came through very clearly to the enjoyment of all who heard. While the famous minuet in G of Beethoven sounds more familiar when played as a violin solo, the organist rendered it most acceptably. In fact, he was happy throughout the program.

Two other artists require mention for the excellence of their musical offerings: Moritz Rosenthal and Reinald Werrenrath; the latter of whom is the better known to the Radio public. In his offerings there was exemplified the heights to which artistic tendencies may carry one. Each number as he sang it was treated with due deference to its peculiar setting, so that Danny Deever could not possibly have been placed in a setting identical with the aboriginal songs preceding. Mr. Rosenthal ranks among the topmost artists of his instrument and impresses equally with technical supremacy and interpretative insight. He should come to us again.

COMPLETE RULES OF GAME OF "WHOZIT"

1. Radio Digest will sponsor a national game to be called the game of Whozit, which will be participated in by the following radio broadcasting stations: WFT, Chicago; WJCA, New York; WNAC, Boston; KJL, Seattle; WMAK, Cincinnati; Cleveland; WPC, Atlantic City; WLW, Cincinnati; WLS, Detroit; WOOD, Grand Rapids, Mich.; WSOB, Milwaukee; CKY, Waukegan; WMC, Memphis; WSM, Nashville; KTBS, Hot Springs, Ark.; KMOX, St. Louis, Mo.; WGC, Davenport, W.B., Kansas City; WOV (formerly WQAN), Onondaga, N.Y.; WFL, Detroit; KPHC, Houston, Tex.; KVOO, Bristol, Okla.; WJAX, Jacksonville, Fla.

2. \$26,000 in prizes will be distributed to the successful contestants, as follows: Twenty-four first prizes \$500 in gold for each of the twenty-four stations; twenty-four \$300 merchandise orders for second prizes; and twenty-four \$200 in merchandise orders for third prizes. Grand prizes of \$4,000 in gold will be awarded to the individual judged to be the national DX (long distance) "Whozit" champion who has submitted the most correct work, identification and the nearest correct solution of the entire 384 portraits from all stations participating, and \$1,000 in gold for the individual who shall be judged to have submitted the most correct work entered in all of the twenty-four participating stations. The twenty-four station prizes will be divided and awarded on the following basis: 1st prize, \$350 in gold to the individual whose set of sixteen completed portraits is most nearly correct in the assembly of segments, identification of artists, and the closest identification of the artist; 2nd prize, \$300 in merchandise order to the individual whose completed sets are second best in order of correctness, identification and nearest; and 3rd prize, \$250 in merchandise order to the individual whose completed sets are third best in order of correctness, identification and nearest.

3. A board of judges at Radio Digest, 510 N. Dearborn St., Chicago, Ill., will pass on all the work submitted and award the prizes for all stations and the grand prizes. Its decision will be final.

4. Everybody will be eligible to compete except employees (and their families) of Radio Digest or of any of the participating stations, included in Rule 1.

5. The game of Whozit will be free. It will not be necessary to be a subscriber to Radio Digest. Tracings of the pictures may be made at offices of Radio Digest in Chicago or New York or from the files in public libraries, or at the offices of participating broadcasting stations. These with proper identifications may be submitted for the published pictures. All general information helpful to the solution of the game may be obtained from any of the offices of the broadcasting stations participating.

6. Conditions of the game: Beginning with the issue of November 15 and for eight consecutive issues Radio

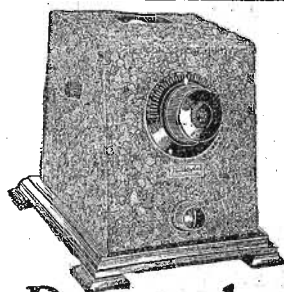
New Stations

New stations licensed by the department of commerce last month include: WBKN, Brooklyn, N. Y., 291.1m-1020kc; WJEB, Chicago Heights, Ill., 419.3m-715kc; WSYR, Syracuse, N. Y., 352.7m-850kc; KCVL, Tacoma, Wash., 242.5m-1227kc; WDWV, Newark, N. J., 250.2m-1070kc.

The following stations changed wave lengths: WCBR from 209.7m-1430kc to 234.2m-1280kc; WCWS, now WICC, from 209.7m-1430kc to 232.4m-1290kc; KFDY from 305.3m-950kc to 299.8m-1060kc; KFWM from 315.5m-950kc to 282.9m-930kc; WEDC from 122.2m-710kc to 249.9m-1200kc.

KFRC, San Francisco, Calif., has changed owners. Don Lee, Inc., takes the place of City of Paris Dry Goods Co.

This month brings two deletes, KFJC, Junction City, Kan., and WJEX, Oosterville, Miss.



Penetrola penetrates interference

Now you can cut through interference and double your stations with Penetrola, the proved radio "booster." Will improve any type set. Easily attached in a few minutes. Ask your dealer or write direct to Walbert Manufacturing Company, 911 Wrightwood Avenue, Chicago—makers of record-holding Isofarad receiver.

PRICE **\$35** Walbert Penetrola
Prices slightly higher West of Rockies and in Canada

CROSLY TELS CURE

(Continued from page 2)

by a new Radio Commission created by congress, the agency which controls and directs broadcasting must have the power to actually control it. Legislation must, therefore, provide the necessary power to unscramble the present condition which borders on chaos; it must have the power to eliminate from the present band of broadcasting hundreds of the existing stations, prevent the further pirating of wave lengths and assign stations not entitled to wave lengths in the present band to waves in a new band to be created."

Digest will publish a series of forty-eight composite portraits in each number. These forty-eight portraits will comprise two representations each from the twenty-four broadcasting stations that participate. Each photograph will be intersected with white lines showing the forehead of one artist, the eyes of another, the nose and mouth of a third and the chin and neck of a fourth. Each segment of each composite photograph will bear a number. It will be necessary for each contestant to separate the various segments and reassemble them on a mount so that they are correctly aligned to complete the portrait of one of the original Radio artists of whom it was taken. Only complete sets are to be submitted. Each portrait must be identified in ten or more words; giving at least five facts about the original artist photographed.

7. Artists (for their representatives) whose frag-

The Readers' View

Brickbat for Shenandoah

To me the most vital problem of this Survey of Radio Interference is the fact that the small stations of 1,000 watts and less can crowd up into the high wave lengths and interfere with the superpower stations.

For instance, in this part of the country, we have scarcely heard a concert from WJZ since KPNF and KMA, Shenandoah, Iowa, took a wave length only a few meters above WJZ. There could be

no comparison of the concerts from these two stations, as WJZ has the pick of the finest talent in the country. It would not be so bad if these small stations were on only a few hours of the day, but they are on continuously from early morning until late at night and it is most annoying to have to listen to old time fiddlers and farm talks when some very fine concert of real artists is being broadcast from New York.

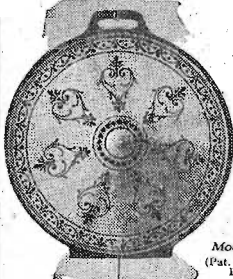
On a recent Tuesday night when the WEAF chain stations were broadcasting their very fine concert, KSO, Clarinda, Iowa, interfered to such an extent with WCCO, Minneapolis, that the New York Symphony orchestra was playing a duet with the "Haymow Five" of Clarinda.—J. P., Sioux City, Iowa.

Shenandoah Again

If the "gentleman" from KPNF only knew what the majority of people thought of him and his bag of wind, he certainly would let up a little. Radio in another three months for Northern Iowa will be utterly ruined unless some action is taken to put such unethical advertising out of business.

(Continued on page 23)

Windsor Wall or Table Type Cone Speaker Amazes Radio World



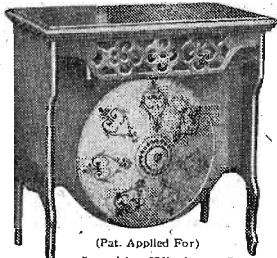
Model 210 (Pat. Applied For)

The latest model Windsor Cone Loudspeaker has astonished the world of radio. In convenience, quality of reception, and extremely low price, it far surpasses anything yet offered. It is 22 inches in diameter and is mounted on a sounding board which, in turn, is supported by an easel back. It can be hung up on the wall, as in the picture above, or stood upon any flat surface as shown in the picture below. It contains the famous Windsor Loudspeaker unit noted for the extreme clarity and fidelity of reproduction.



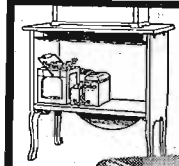
Model 210 22-Inch Cone Loudspeaker with sounding board and easel back. \$15.00 (West of Rockies, \$18) (Pat. Applied For)

Model 302 (Shown below) With Moulded Composition Horn Loudspeaker and 18-inch Cone Loudspeaker.



(Pat. Applied For)

In this Windsor Console is combined both the Windsor Moulded Composition Horn Loudspeaker and the 18-inch Windsor Cone Loudspeaker. The top is 30 in. x 17 in. and stands 29 in. high. Plenty of battery and equipment space is provided by large shelf in rear. Price, finished in Mahogany or Walnut \$48.00 (West of Rockies, \$55)



Rear view at left shows large compartment with ample space for batteries, battery charger, or battery eliminator, which are entirely concealed from view. Back is open for ventilation of batteries.

At right is shown the Cone Loudspeaker, with its sounding board, which is quickly and easily removable, allowing instant access to all batteries, battery charger, battery eliminator or other equipment and wiring.



(Pat. Applied For)

Model 200 with 22-inch Cone Loudspeaker

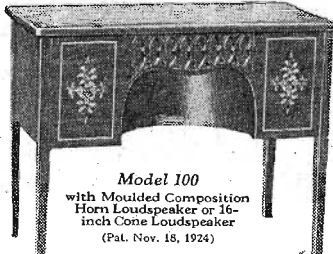
This Windsor Cone Loudspeaker Console is equipped with a 22-inch Windsor Cone Loudspeaker. Its top is 30 in. x 17 in. and is 29 in. high. The battery shelf provides ample space for all batteries, charger, battery eliminator and other equipment. Beautifully finished in either Mahogany or Walnut.

Model 200

\$29

Console with Cone Loudspeaker Ready for Set and Batteries (West of Rockies, \$35)

This Is the Fastest Selling Line of Loudspeakers and Loudspeaker Consoles in the Radio World Today



Model 100 with Moulded Composition Horn Loudspeaker or 16-inch Cone Loudspeaker (Pat. Nov. 18, 1924)

Above is shown a beautiful Windsor Loudspeaker Console. Finished in either Walnut or Mahogany, which provides ample space on top for any radio set. The battery shelf beneath will accommodate all necessary equipment. Equipped with either Moulded Composition Horn or 16-inch Cone Loudspeaker. Size: 38 in. x 18 in., and 29 in. high. Price \$40.00 (West of Rockies, \$42.50)

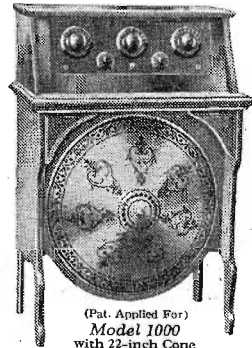
To the right is shown the newest Windsor Loudspeaker Console. It is equipped with a 22-inch Cone Loudspeaker and cabinet suitable for all equipment. Battery shelf provides ample space for all equipment. Beautifully finished in either Walnut or Mahogany. Price (without receiving set) \$44.00 (West of Rockies, \$52.00)

Note to Dealers: Write or wire today for details of the highly profitable Windsor line.

Electrical Department

WINDSOR FURNITURE COMPANY

1418 Carroll Avenue - CHICAGO, ILLINOIS
Los Angeles Branch—917 Maple Avenue



(Pat. Applied For) Model 1000 with 22-inch Cone Loudspeaker

WJAZ Chicago, Ill. (329.5m-910kc) 7 p. m. diversified program; 9, Shoreland.

WJLJ Moorhead, Ill. (370.2m-810kc) 8-9 p. m. child artists; 11-1 a. m. Palmer House Victorians.

WLIB Chicago, Ill. (623.5m-570kc) 7:10 p. m. dinner concert. Drake concert ensemble, Blackstone string quintet; 7:10, Old Fashioned Almanack and the Million Sing; 7:22, Adventures in Time; Fred Sweet; 7:30-8, songs, Correll and Gosden; Coon-Sanders orchestra; 11-12, Ruth Farley, organist; songs, Correll and Gosden; Bobby Gessler's Drake hotel dance orchestra; "wait time"; 12-1 a. m. finale.

WLS Chicago, Ill. (344.6m-870kc) 6:30 p. m. sports; 6:40-7:55, artists; 10:30, organist; 10:45-12, orchestras.

WMAQ Chicago, Ill. (447.5m-570kc) 6 p. m. Chicago theater organ; 6:30, Gus Edwards' orchestra; 8, orchestra; 8, program; 9, air time.

WMBB Chicago, Ill. (249.9m-1200kc) 7-8:30 p. m. Trioan ensemble; 8:30-11, orchestra; Artluf Treusschle.

WMC Memphis, Tenn. (499.7m-600kc) 8 p. m. talk on Memphis commerce; 8:30, program.

WOL San Antonio, Tex. (384.5m-790kc) 8:30-9:30 p. m. Radiola Super-Heterodyne hour.

WOC Davenport, Iowa (483.6m-620kc) 7:30-8 p. m. Moline Playboys; 8-9, WEAF; 9-10, WEAF; 10-11, musicale.

WPK Chicago, Ill. (239m-1290kc) 6:45 p. m. string ensemble; 8-9 (217.1m-1380kc), theater program; 9:30-12 (239m-1290kc) symphony orchestra.

WORL Chicago, Ill. (275.1m-1000kc) 7 p. m. Webster Hotel duo orchestra; 9, musicale.

WOW Omaha, Neb. (447.5m-570kc) 7:30-8 p. m. Variations; 9, classical program; 10, Roseland Garden.

WQJ Chicago, Ill. (447.5m-570kc) 7-8 p. m. Rainbo Gardens orchestra; 9:30-10, a. m. studio frolic.

WSB Atlanta, Ga. (322.3m-790kc) 8 p. m. concert; 9:25, Charles Chesdon Jr., organist.

WSBC Chicago, Ill. (288.3m-1040kc) 6:30-8:30 p. m. dinner program; 9:30-1, New Jeffrey Tavern symphonians.

WSOP Milwaukee, Wis. (245.5m-1200kc) 6 p. m. children's hour; 7, popular music; 8, bridge; 9:30, community band.

WSPS Chicago, Ill. (375.5m-1090kc) 6 p. m. dinner hour program; Terrace Garden orchestra; 8, production, the Magic Crystal; 10, popular airs; 12, Witches hour program.



This little lady is the expert accordionist, Hazel Nyman, who wumps the audience of WCFL with her playing. She is quite as pretty as her playing sounds.

Eastern 7:45 p. m. **Central** 6:45 **Mountain** 5:45 **Pacific** 4:45
WGJ (375.5m-790kc) Christmas carols. **WFO (526m-570kc)** Christmas carols. **WFO (526m-570kc)** Christmas carols. **WFO (526m-570kc)** Christmas carols. **WFO (526m-570kc)** Christmas carols.

Eastern 8 p. m. **Central** 7:30 **Mountain** 6:30 **Pacific** 5:30
KSO (241.8m-1240kc) Christmas program. **WDBR (416.4m-720kc)** Christmas Carol. **WEAF (491.5m-610kc)** Carol service, Grace church. **WBAP (475.9m-630kc)** Texas Woman's College concert. **WHO (526m-570kc)** Raleigh Quintet. **WLS (344.6m-870kc)** Christmas program. **WOS (440.9m-630kc)** Chic Seagun, songster. **WGJ (375.5m-790kc)** "Star of the East." **WCCO (416.4m-720kc)** Nash-Finch band. **WHO (526m-570kc)** Troubadours. **WOS (440.9m-630kc)** Old melodies, Emmett Laughlin. **WFAN (475.9m-630kc)** Symphony orchestra. **WMC (499.7m-600kc)** Cooper Card entertainers. **WCOA (252m-1190kc)** Ray Dinsmore, cellist. **KTHS (374.8m-800kc)** Tide concert, Meyer Davis orchestra. **WCOA (252m-1190kc)** Mr. and Mrs. L. L. Gerst, vocalists. **WBAP (475.9m-630kc)** Euterpean Club Christmas carol concert. **WFAP (491.5m-610kc)** Special Christmas program. **KTHS (374.8m-800kc)** Sybil Seaman, organist. **KOA (322.4m-930kc)** "The Spirit of Christmas." **KTHS (374.8m-800kc)** First Presbyterian church double quartet, Christmas carols. **KOIL (309.2m-930kc)** "Old Doctor Applesauce." **WEMC (315.6m-950kc)** Christmas carols.

Eastern 12 mid. **Central** 11 **Mountain** 10 **Pacific** 9
WFL (475.9m-630kc) Chimes, Annunciation from the Messiah. **WFL (475.9m-630kc)** Chimes, Annunciation from the Messiah. **WFL (475.9m-630kc)** Chimes, Annunciation from the Messiah. **WFL (475.9m-630kc)** Chimes, Annunciation from the Messiah.

FRIDAY, DECEMBER 31

Headliners

Eastern 8 p. m. **Central** 7:30 **Mountain** 6:30 **Pacific** 5:30
WFL (475.9m-630kc) "Skinny and His Gang." **WFL (475.9m-630kc)** Esther Nelson, organist. **WGJ (375.5m-790kc)** Remington band. **WRVA (256.3m-1170kc)** Mirth and fun specialties. **WOS (440.9m-630kc)** Anniversary program. **WGJ (375.5m-790kc)** Comedy. **WCOA (252m-1190kc)** Robe and Hopkins, Hawaiian entertainers. **WGBF (236.1m-1270kc)** New Year eve program. **KOA (322.4m-930kc)** Microphone adventures. **WBAP (475.9m-630kc)** Negro Holiness church service. **WGJ (375.5m-790kc)** Watch Night Service, First Methodist church. **WFL (475.9m-630kc)** New Year's eve frolic. **WRVA (256.3m-1170kc)** Happy New Year party. **WFL (475.9m-630kc)** Greenwich Village Inn.

Wishing You a —

Merry Christmas!

and bringing you a

Prosperous New Year

FRIDAY, DECEMBER 31

Headliners

Eastern	Central	Mountain	Pacific
7:15 p. m.	6:15	5:15	4:15
WTIC (475.9m-630kc) Laura Gault, pianist.	6:30	5:30	4:30
WEAF (491.5m-610kc) Trip through toyland.	7:30	6:30	5:30
WFAN (475.9m-630kc) Cyrus Barcus, cornetist.	8:30	7:30	6:30
WTIC (475.9m-630kc) Esther Nelson, organist.	9:30	8:30	7:30
KDKA (309.1m-970kc) "Lina Beans." Pitt players.	10:30	9:30	8:30
WBZ (333.1m-900kc) Dervan trio.	11:30	10:30	9:30
WFL (475.9m-630kc) Solos soloists.	12:30	11:30	10:30
WBAP (491.5m-610kc) Fair, Fred Leuning, "Our Neighbor, Canada."			
WNYC (526m-570kc) Salvatore Casazza, mandolinist.			
WRVA (256.3m-1170kc) Arvonica music club.			
WVI (352.7m-800kc) Michigan night.			
KDKA (309.1m-970kc) Melvin Henghlin, baritone.			
KUOA (259.2m-1090kc) Basketball, N. E. Teachers College of Oklahoma-U. of Arkansas.			
WBAP (475.9m-630kc) Texas Christian University.			
WBZ (333.1m-900kc) Cecilia Benson, soprano.			
WLS (344.6m-870kc) Kentucky Cardinals.			
WHO (526m-570kc) Raleigh quintet.			
WGJ (375.5m-790kc) Remington band.			
WLS (344.6m-870kc) Northwestern U. octet.			
WOS (440.9m-630kc) Chic Seagun, songster.			
WCCO (416.4m-720kc) Sercenadin' Stan Thompson.			
KDKA (309.1m-970kc) Teaberry Time.			
KOIL (309.2m-930kc) Carson Town band.			
WFL (475.9m-630kc) Fitz Sisters, "All Things That Are Lovely."			
WBZ (333.1m-900kc) Mysterious tenor.			
WCOA (252m-1190kc) Nash-Finch band.			
WGJ (375.5m-790kc) "Abie's Irish Nose" and "The Wagon."			
WHO (526m-570kc) Troubadours.			
WTIC (475.9m-630kc) Bernhard Levitov and Company.			
WBZ (333.1m-900kc) Ruth Borg Ekberg, contralto.			
WOS (440.9m-630kc) Miss Clara Bardell program.			
KEAP (340.7m-850kc) Out-of-town program.			
WEAF (491.5m-610kc) Norman V. Pearce, bachelor poet.			
WEAA (475.9m-630kc) Reuben Davies club.			
WLAS (390.3m-730kc) Koorin auditorium program.			
WMC (499.7m-600kc) Cooper Card entertainers.			
WRVA (256.3m-1170kc) Silver Trumpet quartet.			
WIAL (45.8m-1220kc) Opera, "Patience."			
WEX (316.4m-800kc) International code lessons.			
WRVA (256.3m-1170kc) Double octet.			
KOB (438.6m-600kc) College salon orchestra.			
WBAP (475.9m-630kc) Negro Holiness church service.			
WCCO (416.4m-720kc) Luther Seminary male chorus.			
WEAF (491.5m-610kc) Rolle's Palais D'Or orchestra.			
WOS (440.9m-630kc) Hugo Scott, harmonica and guitar.			
KFO (428.3m-760kc) Cabrira Cafe orchestra.			
WLS (344.6m-870kc) Show boat.			
WOOD (241.8m-1240kc) "Tattlescope."			
WOOD (241.8m-1240kc) Atwater Kent Hightingale.			
WOOD (241.8m-1240kc) "The Swimming Sheet."			
KOA (322.4m-930kc) American Legion.			
KTHS (374.8m-800kc) Joe Kuntz's squeeze organ.			

FRIDAY, DECEMBER 24

Headliners

Eastern	Central	Mountain	Pacific
5:30 p. m.	6:30	5:30	4:30
KOA (322.4m-930kc) Play, "Why the Chimes Rang."	7:30	6:30	5:30
WEAF (491.5m-610kc) Christmas story.	8:30	7:30	6:30

The only complete line of speakers on the market

UTAH CONE Speaker \$16.00
 Free Edge 17 1/2" high

UTAH JUNIOR \$12.50
 11" bell

UTAH STANDARD \$22.50
 14" bell The Speaker with the Golden Throat

UTAH SUPERFLEX \$10.00
 Reg. U. S. Patent Office

UTAH BOOK Speaker \$19.00
 Size 17 1/2" x 13 1/2"

Wherever there's a Radio—there's a room for a

UTAH

Made in Salt Lake City

Trade Mark Registered

We are manufacturers, not assemblers

Utah Radio Products Co., 1421 S. Michigan Ave., Chicago

"I want to hear a Utah"

WJLD Moonshert, Ill. (370.2m-310kc) 9 p. m. child artists; 11.1 a. m. Palmer House Victoria's; Jack Nelson.

WLIB Chicago, Ill. (302.6m-500kc) 11-12 midnight, songs, Correll and Gosden; Ambrose Lanes organist; Bobby Meeker's Drake hotel dance orchestra; romantic songs; Tommy Coates, baritone; 12.1 a. m. frolic.

WLS Chicago, Ill. (344.6m-570kc) 7 p. m. May and June; 7.15 duo, Old Town coffee room; 7.30-12, program.

WMAQ Chicago, Ill. (447.5m-570kc) 6 p. m. Chicago theater organ; 6.30, Wide Awake club; 8, inausical; 9.30, air line.

WMBB Chicago, Ill. (249.9m-1200kc) 7.8-30 p. m. Trio and duo; Norman Harle, baritone; Veronica Kring, contralto; John Sammons; 8.30-11, frolic.

WNC Memphis, Tenn. (439.7m-500kc) 7 p. m. Mississippi Valley facts; 8.30, Cooper Cord entertainers; frolic.

WQAT San Antonio, Tex. (394.5m-700kc) 8.30-9.30 p. m. musical program.

WQIC Davenport, Iowa (453.6m-620kc) 7.30-8.30 p. m. Niceman Melody Mixers; 8.30-9, WEAF; 9.30-10, WEAF; 9.30-10.30, lecture.

WOK Chicago, Ill. (238m-1200kc) 6.7-45 p. m. string ensemble; 8-9, (217.3m-1380kc), theater program; 9.30-12 (239m-1200kc), symphonies.

WOOD Grand Rapids, Mich. (241.5m-1240kc) 8 p. m. program; 9, Van Weck instrumental quartet.

WORD Chicago, Ill. (475.5m-630kc) 7 p. m. North Shore line; 7.45, World News digest; 9, station program.

WOS Jefferson City, Mo. (440.9m-560kc) 7.15 p. m. Radio Bible class, talks; 8.20, musicale.

WOW Omaha, Neb. (367.5m-570kc) 8 p. m. Hugo Heyn, marimba soloist; Emil Hofmann, pianist; 6.50, orchestra; 9, classical.

WQJ Chicago, Ill. (447.5m-570kc) 7.8 p. m. Rainbo gardens orchestra; 10.2 a. m. Rainbo frolic.

WSB Atlanta, Ga. (428.3m-700kc) 8 p. m. concert; 10.45, concert.

WSBC Chicago, Ill. (288.3m-1040kc) 6.30-8.30 p. m. dinner program; 9.30-11, Jeffrey Tavern symphonies.

WSM, Nashville, Tenn. (282.8m-1050kc) 6.45 p. m. Andrew Jackson hotel orchestra; 8, studio concert; 10, studio concert; 10.30, F. Arthur Henkel, organist.

WSOE Milwaukee, Wis. (245.5m-1200kc) 7 p. m. popular program; 8, Library review; 8.15, Whozit.

WSWS Chicago, Ill. (275.5m-1050kc) 6 p. m. dinner hour program; Terrace Garden orchestra; 8, recital; 10, Mildred Celacio, blues singer; Terrace Garden orchestra; 12, Witching hour program; Terrace Garden orchestra.

Mountain Time Stations

KOA Denver, Colo. (322.4m-590kc) 8 p. m. KOA orchestra; 8.15, studio program.

KGO State College, N. M. (348.6m-560kc) orchestra.

Pacific Time Stations

KFI Los Angeles, Calif. (467m-640kc) 7.8 p. m. popular program; 8-9, Aeolian organ recital; 9-10, semi-classical hour; 10-11, Packard ballad hour.

KFWB Hollywood, Calif. (522m-570kc) 6.7 p. m. Pontiac dinner hour; 7.30, news; 9-10, Bill Hatch and his orchestra; 11, Warner Brothers frolic.

KGO Oakland, Calif. (361.2m-580kc) 6-6.55 p. m. Stanislas Ben's Little symphony; 8-9, program.

KGW Portland, Ore. (401.5m-510kc) 6.7 p. m. dinner concert; 8.5-30, KGW movie club; 8.30-10.30, dance music; 10.30-12, frolic, Hoot Owls.

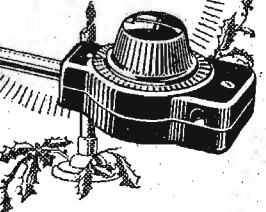
KHJ Los Angeles, Calif. (495.2m-740kc) 6.30-7.30 p. m. children's hour; 8.10, feature program; 10.11, Margouli Gardens symphony orchestra.

KLX Oakland, Calif. (508.2m-590kc) 8.9-30 p. m. special program; 9.30-10.30, Athens Athletic club orchestra.

KMTR Hollywood, Calif. (370.2m-510kc) 8.9 p. m. ensemble; 10, dance music; 10.12, dance music.

KNX Hollywood, Calif. (538.2m-590kc) 7 p. m. feature; 8, 9, 10, features; 11, Hotel Ambassador.

Best Gift for Radio Fans



PLEASE your radio friend most by giving a radio gift. For \$2.50 you can buy a radio device more pleasing than any radio article up to ten times its cost. Ask at the radio store for a

Centralab Modu pluG

This is the wonderful invention that gives any radio set the new tone control of the latest high-priced receivers. Gives smooth, positive control of tone volume from a whisper to maximum. Attaches instantly without tools.

60 makers of leading standard sets use Centralab products. You are sure of buying wisely.

CENTRALAB LABORATORIES
12 Keefer Ave.,
Milwaukee, Wis.

only \$2.50
Centralab



The song shop is the title of the hour Allene Patterson Duff, contralto, spends at WBAP, Fort Worth. Her programs are enjoyed because they are varied and new.

KPO San Francisco, Calif. (428.3m-700kc) 6.30 p. m. State Restaurant orchestra; 8-9, Cahira cafe

orchestra; 9-10, Palace Hotel Rose Room dance orchestra; 10-11, orchestra; 11-12, dance orchestra.

KWSC Pullman, Wash. (348.6m-560kc) 7.30 p. m. concert, talks.

Friday, silent night for: CFCA, CKAC, CKNC, KFDY, KFNE, KGO, KIDS, KPCC, KFSN, KUOA, KWWC, WBBB, WCAD, WCBD, WFI, WGBS, WIP, WJAZ, WKRC, WLTW, WLVN, WLWL, WREO, WSAI, WSMB, WSUI, WTAM.

SATURDAY, DECEMBER 18

Eastern	Central	Mountain	Pacific
6:25 p. m.	5:25	4:25	3:25
WTIC (475.5m-630kc)	Cecelia Stenwall.		
WGBS (315.6m-950kc)	Sam A. Perry, composer.		
WTIC (475.5m-630kc)	Hub quartet.		
7:15	6:15	5:15	4:15
WGBS (315.6m-950kc)	Elizabeth Lumsden, contralto.		
7:30	6:30	5:30	4:30
WEAF (491.5m-610kc)	Columbia University orchestra.		
WGBS (315.6m-950kc)	Melody Maids.		
WTIC (475.5m-630kc)	Bible Study.		
8:05	7:05	6:05	5:05
EDKA (399.1m-970kc)	Westinghouse band, Margaret Curran, Lyla, contralto.		
WOC (483.6m-620kc)	Faerman trio.		
WTIC (475.5m-630kc)	Philharmonic brass quartet.		
8:10	7:10	6:10	5:10
8:25	7:25	6:25	5:25
WJZ (454.2m-660-6c)	Philharmonic society, WRC, WGY.		
8:30	7:30	6:30	5:30
ROIL (305.9m-980kc)	Nora Pizum's Juvenile trio.		
WBAP (475.9m-630kc)	Lawrence Smith, pianist.		

Eastern
WHAAS (399.2m-750kc) Jefferson Children's program.

Central
WFAA (475.9m-630kc) Mrs. Max Spangler, soprano; Clara Barzen, pianist.

Mountain
WMC (499.7m-600kc) Memphis Plectrum.

Pacific
KPRC (293.8m-1030kc) Sweetheart of the air.

KFHS (374.8m-800kc) Fiddle land.

WFO (299.8m-1000kc) Marcelle Duo; American Composers' night.

WTIC (475.5m-630kc) Club Worthly orchestra; 10.30, Clara Barzen, pianist.

WBAP (475.9m-630kc) The Sunflower Girl; 8.45, 10.45, 11.45, Hired Help skylark.

KGO (361.2m-830kc) "Harmony Hic" Parker.

SATURDAY, DECEMBER 25

Eastern	Central	Mountain	Pacific
5:00 a. m.	5:00	4:00	3:00
WMC (499.7m-600kc)	Christmas Mass.		
5:30	4:30	3:30	2:30
WFAA (475.9m-630kc)	Nurses' chorus, St. Paul Sanitarium.		
7:30	6:30	5:30	4:30
WEAF (491.5m-610kc)	"Messiah."		
8:05	7:05	6:05	5:05
WGBZ (333.1m-920kc)	WGY (375.5m-750kc) Boston Symphony.		
8:30	7:30	6:30	5:30
WFLS (399.8m-750kc)	Henri Gendron's orchestra.		
WLS (344.6m-870kc)	Christmas program.		
8:30	7:30	6:30	5:30
WHAAS (399.2m-750kc)	Dr. Chester Miller.		
9:30	8:30	7:30	6:30
WFAA (475.9m-630kc)	W. W. Macech, harmonica.		

I Will Train You At Home To Fill a Big Pay Radio Job

RADIO NEEDS TRAINED MEN!

"I give you all this apparatus so you can learn quickly at home the Practical Way."

Earn \$50 to \$250 a Week—

RADIO EXPERTS IN BIG DEMAND

Radio needs trained men. Get into this new live-wire profession of quick success. It's the trained man, the Radio Expert, who gets the big jobs of this profession—paying \$75, \$100, \$200 a week and up. Every day N. R. I. trained men are taking good places in the Radio field—men just like you—their only advantage is TRAINING. You can prepare just as they did, by new practical methods. Our tested clear training makes it easy for you. Big Free Book contains all the proof.

You Learn Quickly In Spare Time

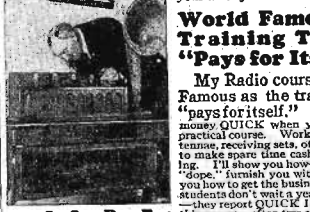
So sure am I that I can train you successfully for a better future in this new Big-Pay profession, that I guarantee your training with a money-back bond. Lack of experience or education won't hold you back—common schooling all you need to start. You can stay home, hold your job, and learn quickly and pleasantly in your spare time. My practical, helpful methods enable you to start RIGHT AWAY toward one of the bigger Radio jobs paying \$50 to \$250 a week. No delay, no losing time from work—no scripping or for me. Kimball, Station WMAQ, Chicago, Ill., scraping to get your training.



Operates WMAQ
"Accepted a position with the Chicago Daily News Station WMAQ, my INCOME was COMPLETELY DOUBLED, thanks to you. I handle all consultation, also do operating. Your course taught me not only the theoretical but also the practical knowledge that makes my work easy for me." Kimball, Station WMAQ, Chicago, Ill.

You Get All of This

All instruments shown here and others sent to all my students free of extra cost under short time special offer. Clip coupon now—find out all about this unequalled offer while you still have time to take advantage of it. This training is intensely practical—these instruments help you do the practical work. You learn workmanship and get added confidence in your ability.



World Famous Training That "Pays for Itself"

My Radio course World-Famous as the training that "pays for itself." Make more money QUICK when you take up this practical course. Work on millions of antennae, receiving sets, offers you big chance to make spare time cash while you're learning. I'll show you how—teach you the latest "dope," furnish you with business cards, show you how to get the business and make it pay. My students don't wait a year to increase their income—they report QUICK INCREASES as a result of this course—often two or three weeks after starting.

Howard Luce, Friedens, Pa., made \$320 in 7 weeks during spare time. D. H. Suits, Newport, Ark., writes, "While taking the course I earned in spare time work about \$900." Earl Wright, Omaha, reports making \$400 in short time while taking course—working at Radio in spare time! Sylvester Senso, Kaukauna, Wis., made \$500. These records not unusual—these men a few of hundreds.

Your Satisfaction Guaranteed

We who know the results this practical tested training gets—the increased earnings it has brought to men everywhere—stand behind it all the way with a signed guarantee bond that we give you when you enroll. On completion if you're not entirely satisfied, we'll refund every cent you've paid us. No strings to this offer—you yourself are the only judge. Get started today! It's your big chance for one of the bigger Radio jobs—mail coupon NOW for my Big FREE BOOK and proof! No obligation.

Get This FREE BOOK

Most amazing book on Radio ever written—full of facts and pictures—tells all about the great new Radio field, how we prepare you and help you start. You can do what others have done—GET THIS BOOK. Send coupon today—no obligation.

J. E. SMITH, President
NATIONAL RADIO INSTITUTE
Dept. PU-99, Washington, D. C.



Rich Rewards in Radio
J. E. SMITH, President
NATIONAL RADIO INSTITUTE
Dept. PU-99, Washington, D. C.

Dear Mr. Smith—Without obligating me in any way, send me your free book, "Rich Rewards in Radio" and all information about your practical, home-study Radio Course.

Name.....Age.....
Street Address.....
Town.....State.....

EMPLOYMENT SERVICE TO ALL GRADUATES
Originators of Radio Home-Study Training

Eastern	Central	Mountain	Pacific
9:45 p. m.	8:45	8:45	8:45
WLAS (399.5m-750kc) Kosair auditorium concert.	9:15	9:15	8:15
11:15			
KTHS (374.8m-800kc) Salvatore Orlandi, euphonium.			
12			
11	10		
KPRC (329.8m-1000kc) Texan Theatre pipe organ.			

Educational Features

Eastern	Central	Mountain	Pacific
WOW (450m-570kc) Literary period.			
6:30	7:30	6:30	5:30
WOP (450m-570kc) Creighton educational period.			
9:30	7:30	8:30	7:30
KP (467m-642kc) Madame Nelson, psychologist.			
9:30	7:30	6:30	
WLQA (447.5m-670kc) Photologues.			

Regular Saturday Features

Eastern Time Stations			
CKAC Montreal, Que., Can. (416.7m-730kc) 7:15 p. m. dinner concert; 10:30 Red jackets.			
KDKA Pittsburgh, Pa. (305.1m-570kc) 6:15 p. m. dinner concert; Westinghouse band; 7:15, Radio chat; 8, concert.			
PVX Havana, Cuba (399.8m-750kc) 8:30 p. m. frolic.			
WAAW Newark, N. J. (263m-1140kc) 6 p. m. Ken Smith and his orchestra; 7, Bill Collins; 10:30, Four Towers orchestra.			
WAKO Richmond Hill, N. Y. (315.6m-950kc) 12 p. m. Mitz Weinzoff's concert orchestra.			
WTA Springfield, Mass. (332.1m-800kc) 6:30 p. m. orchestra; 7:15, orchestra; 7:45, male quartet; 8:10, orchestra; 10:15, dance music.			
WCAE Pittsburgh, Pa. (491.3m-650kc) 6 p. m. dance orchestra; 8, program; 9, WEAF; 10, dance music.			
WCX Detroit, Mich. (516.5m-580kc) 6-7 p. m. dinner program; Goldette ensemble.			
WEAF New York, N. Y. (491.5m-610kc) 6 p. m. dinner music; 7, Janes's Hoffman orchestra; 7:30, headliner; 7:45, talk; musical comedy hits by the WEAF comedy troupe; 9, Ballade hour, New York symphony; Walter Damrosch, WEEL, WGR, WFL, WCAE, WJL, WVAL, WYAC, WGN, WNSD, WPCD, WPAE; (regular); 10, WEAF Revue; 11, Vincent Lopez orchestra from Casa Lopez.			
WEEL Boston, Mass. (346.8m-680kc) 7:55 p. m. Boston Globe; 8, WEAF; 9, WEAF.			
WFI Philadelphia, Pa. (284.5m-720kc) 6:45 p. m. Adolphus dance orchestra; 8:15, recital; 9, concert; 9:30, Starlight Players; 10:30, Adolphus French Rock orchestra.			
WGBS New York, N. Y. (316.5m-850kc) 7:45 p. m. George Hall and his Royal Arcadians; 10:30, Arrow-head Inn dance orchestra.			
WGR Buffalo, N. Y. (319m-840kc) 9:10 p. m. WEAF. WGS Schenectady, N. Y. (378.5m-790kc) 6:30 p. m. dinner program, Chonodaga hotel, WFLR, WGV; 7:30, Shea's Barlight orchestra, WMAK, WGY; 8:05, WIZ; 10:30, dance program.			
WHK Cleveland, Ohio (372.6m-1100kc) 8 p. m. instrumental hour; 9, orchestra; 10, Happy hours; 11-12, Whos.			
WIP Philadelphia, Pa. (308.2m-590kc) 6:05 p. m. Benjamin Franklin concert orchestra; 7, Uncle Wags's bedtime stories; 8, sports corner, Dr. Francis D'Euse; 8:15, recital; 8:45, program recital; 10:30, dance orchestra from WGBS; 11:05, organ recital.			
WJAX Jacksonville, Fla. (336.5m-890kc) 8:9 p. m. classical program; 9:10 Casa de Baile dance music.			
WJR Detroit, Mich. (516.5m-580kc) 7 p. m. Jean Goldkette's Petite symphony orchestra, soloists; 9, studio program; 11:30, Merry Old Chief and his festing.			
WJZ New York, N. Y. (454.3m-690kc) 7 p. m. m. Hotel Commodore dinner orchestra; 7:45, Don Worlpe's orchestra; 8:25, orchestra; 9, WEAF; 9:10, Jack Dennis's Frivoly Club orchestra; 10, WRC with the vocalists.			
WKR Cincinnati, Ohio (325.9m-920kc) 10 p. m. Swiss Garden Lounge; 11, popular program; 11:15, dance music.			

Western Time Stations			
WLIT Philadelphia, Pa. (394.5m-760kc) 7:30 p. m. concert orchestra.			
WLW Cincinnati, Ohio (422.3m-710kc) 7 p. m. organ concert, Johanna Grosse; 8, Secretary Hawkins Radio club; 9, dance music.			
WMAK Buffalo, N. Y. (265.5m-1130kc) 6:30 p. m. theater, WVO; 9, WMAK; 10:30, Shea's Buffalo WMAK New York, N. Y. (340.7m-890kc) 11 p. m. MeAlpin entertainers.			
WNYC New York, N. Y. (526m-570kc) 7 p. m. u. m. selections.			
WOO Philadelphia, Pa. (508.2m-590kc) 7:30 p. m. piano selections.			
WOW New York, N. Y. (468.2m-740kc) 6:15 p. m. Jacques Jacobs' Hotel Shelton ensemble; 6:45, ensemble; 8:15, Vanguard Hotel orchestra; 10:55, orchestra.			
WPC Atlantic City, N. J. (293.5m-1000kc) 7:15 p. m. organ recital, Arthur Brook; 7:30, Hotel Marton music; 8, Hotel Ambassador dinner music; 8:30, Little Journeys to the Homes of Great Musicians; Alice Sachse, pianist; 9, Hotel Chelsea studio program; 10:30, concert orchestra; 10, WRC Washington, D. C. (468.5m-710kc) 7:15 p. m. Hotel Washington orchestra; 8:10, WEAF; 10:30, WJZ; 11, orchestra.			
WVZ Cincinnati, Ohio (325.9m-920kc) 6:15 p. m. quartet; 7:45, orchestra; 9, WEAF; 12, dance music.			
WVZ Worcester, Mass. (445.1m-550kc) 8:30 p. m. Hancock Hotel orchestra; 9, program; 10, WEAF.			
WTAM Cleveland, Ohio (399.4m-770kc) 6:15 p. m. p. m. WEAF; 10, Ev Jones' Merry-makers.			
WTJ Hartford, Conn. (475.9m-820kc) 6 p. m. Hub Restaurant.			
WWJ Detroit, Mich. (352.7m-630kc) 9 p. m. WEAF.			

Central Time Stations

CKY Winnipeg, Can. (384.4m-780kc) 9:30-10:30 p. m. Herbert Sadler, organist.			
KFAR Lincoln, Neb. (340.7m-880kc) 8:30-10:30, variety program.			
KFMP Shenandoah, Ia. (461.3m-650kc) 7 p. m. headliner; 11, old time music.			
KMA Shenandoah, Ia. (461.3m-650kc) 9-11 p. m. Greenlee Brothers.			
KMOX St. Louis, Mo. (280.2m-1070kc) 6:30 p. m. Children's club; 7, Little Red Schoolhouse; 8, orchestra; 9, KMOX; 10:30, soloists; 10:50, program; 12, 1, dance music.			
KOL Council Bluffs, Ia. (305.5m-980kc) 6:03 p. m. Y Pioneer Radio club; 6:30, McCrory music period; 7, practical radio; 7:30, entertainers; 8, artists; 11, Ambassadors.			
KPRC Houston, Tex. (299.8m-1000kc) 7:30 p. m. time class; 8, concert; 11, frolic.			
KTHS Hot Springs National Park, Ark. (374.8m-800kc) 9:10-10 p. m. dance frolic; 10:15-10:45, Greenlee Brothers.			
KVOO Bristow, Okla. (374.8m-800kc) 6-7 p. m. S. S. Benson; 7:8, Gleeman; 8:9, orchestra; 12, Southern entertainers.			
KYW Chicago, Ill. (525.4m-660kc) 6 p. m. bedtime story; 6:30, Joska Delahary and his orchestra; Johnny Dean and his orchestra; 7, Family hour; 9:10-30, classical concert; 10:30-12, Congress carnival.			
WBAP Fort Worth, Tex. (475.5m-630kc) 8-8:30 p. m. pianist; 9:30-11, orchestra.			
WBDB Chicago, Ill. (226m-1330kc) 8 p. m. Coronado supper club; 12, Nitty club.			
WCO Minneapolis, Minn. (416.4m-720kc) 6:15 p. m. Wesley Barlow's Nicolet hotel orchestra; 8, WEAF; 9, program; 10:05, dance music; Wallace Erickson's orchestra.			
WCFL Chicago, Ill. (370.2m-810kc) 7 p. m. Devoort trio; 8, vaudeville hour; 10, Alamo orchestra; 11-12, entertainers.			
WDAF Kansas City, Mo. (355.6m-820kc) 6:7 p. m. orchestra; 8:25, WEAF; 9:10, around the town; 11:45-1, Nighthawk frolic.			
WDBQ Chicago, Ill. (370.2m-810kc) 7 p. m. Edgewater Beach hotel orchestra; 11-2 a. m., orchestra; Sunset male quartet.			

WENR Chicago, Ill. (265.3m-1130kc) 6-7 p. m. Rauland lyric trio; 8-10, All-American Pioneers; 10:30, American Pioneers.			
WEAA Dallas, Tex. (475.9m-830kc) 6:30-7:30 p. m. Baker hotel orchestra; 8:30-9:30, concert; 11:12, orchestra.			
WGN Chicago, Ill. (302.8m-990kc) 6:35-7 p. m. Drake concert ensemble; Blackstone string quintet; 7:45, orchestra; 8:15, orchestra; 9:10, Sam 'n' Henry; 10:10, Light opera period; 10:15, orchestra; 10:40-11, songs, Correll and Gosden.			
WHLK group; 10:40-11, songs, Correll and Gosden.			
WIBC Chicago, Ill. (225.4m-1330kc) 6-7 p. m. dinner concert; 7:30, Broadway college hour.			
WJAZ Chicago, Ill. (329.5m-810kc) 6:30 p. m. dinner concert; 8:11, Shoreland; 8, musical bigbights; 8:11, Shoreland; 8:11 p. m., Settin' Up hour.			
WLB Chicago, Ill. (302.8m-990kc) 7-7:10 p. m. dinner concert; 7:10-7:22, Old Fashioned stone string quintet; 7:10-7:22, Old Fashioned of Oney Fred Sweet; 7:30-7:45, orchestra; 7:45-8, Neighbor Day in old time songs; 11-12 midnight, songs, Correll program; Stuart Dawson; 9:30, concert; 9:45, orchestra; 12, Fat and Al.			
WLS Chicago, Ill. (344.6m-870kc) 6:40 p. m. College Inn orchestra; 7, Julyahy time; 7:30-11, barn dance theater organ; 6:30, Gus Edwards orchestra; 8, WMBB Chicago; 8:30, Chicago theater revue; 9:30, songs, WMBB Chicago; 240.9m-1260kc) 7:45-8:30 p. m. Triton ensemble; artists; 8:30-11, Triton orchestra ensemble.			
WMC Memphis, Tenn. (499.7m-620kc) 7:30 p. m. dance music; 8:30, entertainment.			
WOC Davenport, Iowa (493.6m-620kc) 8-8:30 p. m. music; 8:9, WEAF.			
WOK Chicago, Ill. (238.1m-1260kc) 6:7:45 p. m. string ensemble; 8:12:30-1:30, program; 9:10-12 (2:30m-1260kc), synopsators.			
WOO Kansas City, Mo. (278m-1080kc) 6:15 p. m. orchestra; 10, service.			
WOW Chicago, Ill. (278.1m-1090kc) 7 p. m. Webster hotel concert program; 9, studio program.			
WOL Chicago, Ill. (447.6m-670kc) 6 p. m. literacy hour; 9, program; 10, Trace-Brown's Orlahomans orchestra; 10:3 a. m. Ralph Gardens orchestra; 8, Alwater Ken, Can. (428.3m-700kc) 8 p. m. Atlanta hotel concert program; 7:30-7:45, Ernest Rogers' Red Head orchestra; 9:30-11, New 122.4m-930kc) St. John's Episcopal cathedral.			
WPKB Bay City, Mich. (260.7m-1150kc) 11-2 a. m. studio program.			
WRS Nashville, Tenn. (282.8m-1060kc) 6:45 p. m. dinner concert program; 7:30-7:45, Ernest Rogers' Red Head orchestra; 9:30-11, New 122.4m-930kc) St. John's Episcopal cathedral.			
WSE Milwaukee, Wis. (245.3m-1220kc) 8 p. m. program.			
WSSW Chicago, Ill. (275.8m-1090kc) 6 p. m. dinner program; Terrace Garden orchestra; 8, production, Alice Jackson; 9, program; 10, orchestra; 11, John Clark, baritone; ballads, John Udes; 12 midnight, Witching hour.			

Mountain Time Stations

KOA Denver, Colo. (322.4m-930kc) 10:30 p. m. Scheer's Colorado orchestra.			
---	--	--	--

Pacific Time Stations

KFI Los Angeles, Calif. (467m-640kc) 7-8 p. m. program, arranged by Paul Roberts, tenor; 8:9, program, A. Scott company; 9:10, Arthur string quartet; 10:11, Richard Radio club; 11:2 a. m.			
KFWB Hollywood, Calif. (282m-1190kc) 6:7 p. m. Fontaine dinner hour; 8:9, program, Mona Moti OH Company; 9:10, Headliner; 10:11, Warner Brothers frolic.			
KGO Oakland, Calif. (361.2m-830kc) 4:5 p. m. Stanislas Dem's Little symphony; 9:1, Hotel Whitcomb orchestra; Frank Gibby, soloist.			
KRNB Portland, Ore. (491.5m-610kc) 6:7 p. m. dinner music; 10:12, dance music.			
KHJ Los Angeles, Calif. (405.2m-740kc) 6:30-7:30 p. m. children's hour; 8:10, varied program.			
WMTR Hollywood, Calif. (370.2m-810kc) 6-6 p. m. concert orchestra; 9:10, studio program; 10:12, dance music.			
KNX Hollywood, Calif. (336.9m-890kc) 7:30 p. m. features; 10, Hotel Ambassador; 11, Saturday night frolic.			
KPO San Francisco, Calif. (428.3m-700kc) 6:30 p. m. States Restaurant orchestra; 8:12, dance music.			
KPSN Pasadena, Calif. (315.6m-950kc) 8-9 p. m. Star-News instrumental ensemble.			

SUNDAY, DECEMBER 19

Church Services			
Eastern	Central	Mountain	Pacific
10 a. m.	8	9:45	8:45
WVJ (332.7m-850kc) First Presbyterian church.			
10:45	9:45		
WCA (319m-950kc) Westminster Presbyterian church.			
12 m.	10	8	
WLAS (399.8m-750kc) Broadway Christian church.			
11:45	10:45		
WLS (344.6m-870kc) U. of Chicago church service.			
12:30	8:50	8:50	
WCCO (416.4m-720kc) Plymouth congregational church.			
12 m.	10	9	
WRAP (475.9m-630kc) First Methodist church.			
12:30	11	10	
WMC (499.7m-620kc) Second Presbyterian church.			
12:30	12	11	
KOA (322.4m-930kc) St. John's Episcopal cathedral.			
2:30	1:30	12:30	
WLS (344.6m-870kc) Chapel service.			
12 m.	8		
WRAP (475.9m-630kc) Vesper Services, Baptist Theological Seminary.			
12:30	6:45		
WSB (428.3m-720kc) Church of the Redeemer.			
6	5		
KOA (322.4m-930kc) St. John's Episcopal cathedral.			
WEAA (475.9m-630kc) Radio Bible class.			
6:30	5:30	4:30	
WOC (493.6m-620kc) United Presbyterian church.			
7:45	6:45	5:45	
WLS (344.6m-870kc) Central Presbyterian church.			
8:30	7:30	6:30	
KPRC (329.8m-1000kc) South Main Baptist church.			
8:30	7:30	6:30	
WOS (440.9m-890kc) First Presbyterian church.			



Use either one for a dependable source of "A" battery current

YOU can get the famous Valley Battery Charger in both vibrator and bulb types. Use either one for a dependable source of A battery current.

The Vibrator Type: This is the pioneer of radio battery chargers. Nearly a quarter of a million of this type of Valley Charger has gone into service all over the world.

Charges 6-volt batteries at 6 amperes, 12-volt batteries at 3 amperes. Quiet. Efficient. Cannot harm the battery.

Mounted in black case with bakelite panel and glass top. Pleasing in appearance and will harmonize with finest radio receiver. Complete with cord and plug, and leads and clips.

The Twin Bulb Type: The twin bulb design of this Valley Charger overcomes the only objection to the bulb type charger, i. e., the slow charging rate.

Using both bulbs, you have a 5-ampere charger. Using only one bulb, you have a 2 1/2-ampere charger. Thus the charging rate and the purchase of one bulb or two are entirely optional.

Absolutely noiseless. Built in handsome black grained metal case. Complete with cord and plug, and leads and clips.

RADIO DIVISION
VALLEY ELECTRIC CO., ST. LOUIS, MO.
 District Offices: Boston, Chicago, Cleveland, Indianapolis, Kansas City, Minneapolis, New York, Philadelphia, San Francisco
 Manufacturers of
 B Power Units—Radio Receiving Sets—Vibrator Type Chargers—Twin Bulb Type Chargers

Tube Set \$4.75

Big Production Brings Big Reduction

in the prices of this six tube chassis. Buy a Nightingale chassis—Can be used without a cabinet if desired or use your own cabinet—Suit your personal taste. With the Nightingale you will get unusual volume, clarity of tone, great selectivity and distance. The fact that our factory has been forced to increase their production, and in doing so it brings down the cost to you. Guaranteed one year, every set fully tested in our factory.

Specifications:
 Panel—2 1/2" high by 2 1/2" long
 Tubes—Six new style 2 1/2" long sockets for dry or wet battery.
 Controls—Two dials, so simple a child can operate them.
 Cabinet—Completely shielded, metal frosted panel.
 Equipment—Six-foot battery cable, 1/2" letters and power tube connection, also three aerial taps for greater volume and selectivity.
 Amplification and Circuit—Three stages transformer coupled, one audio, two radio frequency and detector.
 FREE: Write for our new complete, low price catalogue.

CHICAGO RADIO COMPANY, 80 E. Jackson Blvd., CHICAGO, ILL.

WORLD'S FINEST LOUD SPEAKER

Genuine "ENSCO" 3 FOOT CONE KIT ONLY \$10

MAKE YOUR OWN THREE FOOT CONE SPEAKER IN LESS THAN AN HOUR. Complete parts furnished in kit form. We guarantee this speaker the equal of any manufactured cone speaker at any price.

Buy this wonderful speaker under our absolute guarantee. Your money back if you are not convinced that it is the finest reproducing medium obtainable at any price. It works on any set, with ordinary tubes or with power output.

Send No Money! Write your name plainly in space indicated below, and complete kit will be forwarded to you. Just pay postman \$10.00 upon delivery.

Name: _____
 Address: _____

Engineers' Service Co.
 25 Church St. (Desk D) New York City.

Eastern Central Mountain Pacific
8:30 p. m. 7:30 7:30 8:45
WSJL (483.5m-700kc) North Ave. Presbyterian church.

SUNDAY, DECEMBER 19
Headliners

8:15 p. m. 8:15 8:15 1:15
WHDL (475.1m-1090kc) Turruverson Little symphony.
8:30 4 2
WJUI (483.6m-620kc) Cantata, "The Righteous Branch."

II.
a. Before the Crucifixion... Frank LaForge
b. "Rejoice in the Lord, from ELIJAH... Mendelssohn
c. Tappé-Att. for voice and accompaniment by Pastorineck Madame Schumann-Heink

SUNDAY, DECEMBER 26
Church Services

Eastern Central Mountain Pacific
11:45 a. m. 10:45 8:45 8:45
WLS (344.6m-870kc) St. John's Episcopal church service.

Advertisement for Battery GA-JIT. Includes text: 'It's Quick! It's Clean!', 'TEST YOUR BATTERY with a BATTERY GA-JIT REPLACES MESSY HYDROMETERS', '\$1.25', 'NO RADIO OR AUTO COMPLETE WITHOUT ONE', 'General Instrument Corporation, 477 BROADWAY NEW YORK, U.S.A.'

SUNDAY, DECEMBER 26
Headliners

Eastern Central Mountain Pacific
8:30 p. m. 7:30 6:30 5:30
KPRC (259.8m-1090kc) Texan Theatre pipe organ.

Regular Sunday Features
Eastern Time Stations

CFCA Toronto, Can. (356.9m-640kc) 11 a. m. services:

7 p. m., St. Paul's Anglican church; 8:45, musical program;
CKAC Montreal, Que., Can. (410.7m-730kc) Capitol theater symphony.

WJAX Jacksonville, Fla. (336.9m-890kc) 11 a. m. church; 8-9, services;
WJR Detroit, Mich. (516.9m-580kc) 10 a. m. First Baptist church; 10 p. m. special song service.



The Symbol of Value

THIS Tower trade-mark on a radio speaker or headset is your guarantee of maximum quality at minimum cost. Over 2,000,000 users of Tower products confirm this statement. Speakers from \$4.95 to \$15. Headsets, \$1.95 and \$2.95. Phonograph Attachment, \$3.95.

Advertisement for Tower Cones. Includes text: 'Ask Your Dealer to Demonstrate', 'Tower Cones', 'Manufactured by TOWER MFG. CORP. Boston, Mass.', 'Scientific \$9.50', 'Meistersinger \$15.00', 'On Sale from Coast to Coast'.

KLDS Independence, Mo. (440.9m-600kc) 8:30 a. m. Bible study; 11. Stone church; 3 p. m. Radio church; 6:30, vesper; 9:15, studio service.

KMA Shenandoah, Iowa (461.3m-600kc) 4-5 p. m. sacred program.

KMOX St. Louis, Mo. (280.2m-1070kc) 9 p. m. Sunday night club; 10:30-12, ballroom.

KOLL Council Bluffs, Iowa (315.5m-890kc) 11 a. m. First Congregational church; 7 children's hour; 7:30, Debra Nordin and her orchestra; 8:30, Arkansas Travelers; 9:30, evening concert; 11. Texan theater pipe organ.

KSO Clarinda, Iowa (405.2m-740kc) 11 a. m. M. E. church.

KTIS Hot Springs National Park, Ark. (374.8m-800kc) 11 a. m. 12:15 p. m. service; 9-9:45, Meyer Davis assembly, classic hour; concert; 9:45-10:30, Lawson Reid, organist; 10:30-11:30, Arkansas Travelers Radio Train.

KWCO Bristol, Okla. (374.8m-800kc) 1-2 p. m. Walter Schoggen, Doris Zintner; 4-5, Gospel hour; 6-7, Sophia Ostun, pianist; 7-9, services; 12-1, Melody Boys.

KYW Chicago, Ill. (535.4m-580kc) 11 a. m. Central church service; 4:30 p. m. Edwin Harper; 7-8:30, Sunday evening club; 9:30-11, classical concert.

WBAP Fort Worth, Texas (475.9m-630kc) 11 a. m. First Methodist; 5-6 p. m. vesper services; Baptist summary; 9:30-11, Scriem-Wilke Texas hotel orchestra.

WBM Chicago, Ill. (228m-1330kc) 8 p. m. Coon-Sanders Night Hawks; 9-12, frolic; 12. Nutty club; Con-Sanders orchestra.

WCCO Minneapolis-St. Paul, Minn. (416.4m-720kc) 10:30 a. m. services; 4:10 p. m. House of Hope Presbyterian church; 9:30-11, classical concert. Scientist; 3:15, WEAF; 9:15, musical program; Chipewee Indians; 10:30, St. Paul Municipal organ recital; Hines Fuller Goodwill.

WCFP Chicago, Ill. (491.5m-610kc) 11 a. m. Grace Methodist Episcopal church; 1 p. m. Lutheran church; 7:45, Heiden Avenue Baptist church.

WDAP Kansas City, Mo. (365.5m-820kc) 3-4 p. m. Star's orchestra; 4-4:45, vesper.

WEBH Chicago, Ill. (370.2m-810kc) 10:35 a. m. Seventh Church of Christ Scientist; 5-6 p. m. twilight musicale; 7:50, artists' program.

WEMC Berrien Springs, Mich. (315.5m-550kc) 11 a. m. studio sacred services; 5:15 p. m. chapel.

WENR Chicago, Ill. (285.3m-1100kc) 2-2 p. m. chapel hour of music; 3-4, classical program; 9:30-12, All-American Program.

WFAA Dallas, Texas (475.9m-630kc) 6-7 p. m. Bible class; 7:30-8:30, services; 8:30-9:30, artists; 11-12, orchestra.

WGBF Evansville, Ind. (236.1m-1270kc) 7:30 p. m. services.

WGN Chicago, Ill. (302.8m-990kc) 6:45-7 p. m. Blackstone string quintet, solo artists; 7. The Million Song; 7:20, Old Fashioned Almanack; 7:30, Drake concert ensemble; Correll and Gosden; 8, Auld Sandy; 8:15, WEAF; 9:15, Our Music Room; 10, Sam 'n' Harry; 10:10, Armand Brusseret, violinist; 10:20, Bible reading; 10:30-11, Coon-Sanders orchestra.

WEAD Milwaukee, Wis. (275.1m-1090kc) 3:15 p. m. Tavernier concert.

WHAS Louisville, Ky. (389.5m-750kc) 10 a. m. services; 4:30-5:30 p. m. choral evening.

WHB Kansas City, Mo. (365.5m-820kc) 9:40 a. m. Lindwood Blvd. Christian church; 11:10-12:30, Independence Blvd. Christian church; 7:45, Dr. Burris A. Jenkins; 8:9, Westport Methodist church; 11:15, I. Morrill Moore, organist; Don Anchors, poet.

WHO Des Moines, Iowa (526m-570kc) 11 a. m. service; 5-6 p. m. Rankin Life Little Symphony; 7:30-9, orchestra; 11-12, musical program.

WHT Chicago, Ill. (399.5m-750kc) 1-12 midnight, Paul Rater.

WJAZ Chicago, Ill. (229.5m-910kc) 4:30-9 p. m. Sunday evening concert.

WJLD Moschardt, Ill. (376.2m-810kc) 7:45-8:45 a. m. Catholic services; 9:30-10:30, Protestant services; 1-2 p. m. Howard Peterson, organist; 2-3:30, Bible class; 2:30, Sacred song service; 2-4, popular concert; 4-5, Palmer House Sunday symphony orchestra.

WLIB Chicago, Ill. (302.8m-990kc) 5:6:15 p. m. Herbert Johnson, pianist; Leon Lichtenfeld, cellist; Tommy Coates, banjoist; Blackstone string quintet.

WLS Chicago, Ill. (344.6m-870kc) 10:45 a. m. University of Chicago service; 12:15, Edna Mae Lusk, organist; 1:50-2:30, chapel service; 6:8, WLS Little Brown church.

WMB Chicago, Ill. (249.9m-1200kc) 3-6 p. m. Sunday afternoon concert; 7:40, church service; 9:11, Harmon orchestra, artists.

WMC Davenport, Iowa (483.6m-520kc) 1-2 p. m. old folks musicale; 6:30-7, church service; 8:15-9:15, WEAF; 10:11, Palmer Little symphony.

WOD Kansas City, Mo. (278m-1080kc) 11 a. m. Unity service; 7 p. m. evening service; 7:45, Grand Avenue Methodist church.

WOPD Chicago, Ill. (274.1m-1090kc) 10 a. m. I. B. S. A. service; 2:30 p. m. Chicago Rapid Transit company program; 3:30, Bible lecture; 7, Webster hotel orchestra; 9, I. B. S. A. choral singers.

WOW Omaha, Neb. (526m-570kc) 9 a. m. Omaha Gospel tabernacle; 1:30 p. m. Father Flanagan's Boys' Home period; 9, chapel service.

WQJ Chicago, Ill. (447.5m-670kc) 10:45 a. m. 12:45 p. m. People's church; 5-6, musical program; 10-11, popular program; Rainbo Gardens orchestra; Jack Klein, Adelaide Kerkoff, Harry Geise.

WSB Atlanta, Ga. (428.5m-700kc) 5 p. m. sacred concert; 8, services.

WSBC Chicago, Ill. (288.3m-1040kc) 5-7 p. m. Sunday concert; 9:10, concert; 10-11, New Jeffrey Taverna symphonists.

WSE Bay City, Mich. (380.7m-1150kc) 11-12 noon services.

WSM Nashville, Tenn. (282.8m-1060kc) 10:30 a. m. service.

Mountain Time Stations

KOA Denver, Colo. (322.4m-930kc) 10:30 a. m. church service; 3 p. m. afternoon musicale; 6:30, organ; 7-9, church service.

Pacific Time Stations

KFI Los Angeles, Calif. (467m-642kc) 7-8 p. m. Jack Smith's dance orchestra; 8-9, Aeolian organ recital; 9-10, Bob Bortzger's Venetians; 10-11, Packard Six dance orchestra.

KFWB Hollywood, Calif. (252m-1600kc) 9:15 p. m. Warner Brothers Sunday night movie frolic.

KGO Oakland, Calif. (361.2m-830kc) 11 a. m. service; 2-45 p. m. symphony; 6:30-7:30, little symphony; 7:35, service; 9-10, symphony.

KGW Portland, Ore. (491.5m-610kc) 11 a. m. church; 7:30-9 p. m. church; 9:10, symphony orchestra.

KIJ Los Angeles, Calif. (405.2m-740kc) 7-8 p. m. service; First M. E. church; 8-10, Request program by Orpheus Four male quartet and Frederick Murray, viola soloist.

KMTR Hollywood, Calif. (370.2m-810kc) 6:30-7 p. m. Lesia Castberg's half hour; 7-8, Calc Laisayette string quartet; 8-10, classical program.

KNX Hollywood, Calif. (636.5m-800kc) 6:30 p. m. service; 8, orchestra; 9, feature.

KPO San Francisco, Calif. (426.3m-700kc) 6 p. m. Klata Restaurant orchestra; 6:35, Palace hotel concert orchestra; 8:35-10, Rudy Seiger's Fairmont hotel concert orchestra.

KPSN Pasadena, Calif. (315.6m-950kc) 10:30 a. m. Family Altar service, United Brotherhood.

Sunday silent night for: CKAC, CKNC, CNRA, CNRC, CNRE, CNRM, CNRO, CNRR, CNRY, CNRV, CNRW, KFDY, KFXE, KLN, KM, KOB, KSWB, KXWW, WATG, WCFP, WCOA, WDAF, WBJ, WBT, WDBE, WGH, WHAD, WHAS, WJLD, WJR, WLII, WLW, WMC, WNYC, WOJ, WOOD, WOR, WSMB, WRVA, WWSW, WTLG.

MONDAY, DECEMBER 20

Headliners

Eastern	Central	Mountain	Pacific
6:30 p. m.	5:30	4:30	3:30
WGR (319m-750kc) Cliff-Dwellers orchestra.			
WEAF (491.5m-610kc) Isidore Anzablu, pianist.			
WFAA (475.9m-630kc) Joe S. Baldwin, banjoist; Jimmy Crow's orchestra.			

Eastern	Central	Mountain	Pacific
7:30 p. m.	6:30	5:30	4:30
WSAI (375.9m-630kc) "House of Myrtle."			
KJCC (299.8m-1000kc) Houstonians dance orchestra.			
WBAP (475.9m-630kc) "The Song Shop." Athens Patterson Duff.			
WBO (526m-570kc) WBO quartet.			
WSUI (483.6m-620kc) Basketball, Notre Dame-Iowa.			
9:10	8:10	7:10	6:10
WVA (256.3m-1130kc) Melody Boys.			
9:15	8:15	7:15	6:15
WCOA (252m-1190kc) Pianologue, Gladys Villar.			
WDS (440.9m-600kc) Program from the Home for the Blind.			
9:30	8:30	7:30	6:30
WJLD (275.1m-1090kc) Old Masters hour, Richard Davis.			
WMC (499.7m-600kc) Britling Melody Makers.			
9:45	8:45	7:45	6:45
WRVA (256.3m-1170kc) Richmond police string band.			
9:45	8:45	7:45	6:45
WSUI (483.6m-620kc) Chas. Williams, violinist.			
10:15	9:15	8:15	7:15
KOA (332.4m-930kc) "Christ, the Child," Calvary Baptist Church choir.			
10:20	9:20	8:20	7:20
WJLD (275.1m-1090kc) Far Away hour, foreign national music.			
10:20	9:20	8:20	7:20
WCOA (252m-1190kc) Schneider and Williams.			
10:20	9:20	8:30	7:30
WBAP (475.9m-630kc) Dr. Earle J. Shay, tenor.			
10:20	9:20	8:30	7:30
KJCC (299.8m-1000kc) Clara Kurts' Chocolate Cake-Enter.			
10:20	9:20	8:30	7:30
WJLD (275.1m-1090kc) Che and Vic.			
10:20	9:20	8:30	7:30
WSAI (325.9m-920kc) Chatterbox Night club.			
10:20	9:20	8:30	7:30
WJLD (275.1m-1090kc) Capitol Theatre organ.			
12	11	10	9
WBAP (475.9m-630kc) Baptist Theological seminary.			
12:15 a. m.	11:15	10:15	9:15
WSUI (483.6m-620kc) Organ recital, Elaine Blair.			

MONDAY, DECEMBER 27

Headliners

Eastern	Central	Mountain	Pacific
6:30 p. m.	5:30	4:30	3:30
WJLD (275.1m-1090kc) Joe Anbruster's orchestra.			
7	6	5	4
WEAF (491.5m-610kc) Jane Ellen, contralto.			
7:30	6:30	5:30	4:30
WCOA (252m-1190kc) Happy Hour club.			

Eastern	Central	Mountain	Pacific
6:30 p. m.	5:30	4:30	3:30
WCOA (252m-1190kc) Army band concert.			
8:30	7:30	6:30	5:30
WJLD (275.1m-1090kc) Concert, Northern Texas Tractor Co.			
9:15	8:15	7:15	6:15
WJLD (275.1m-1090kc) Happy trio.			
9:45	8:45	7:45	6:45
WGBB (265.3m-1130kc) Mr. & Mrs. H. A. Carlton, folk songs.			
9:15	8:15	7:15	6:15
WCOA (252m-1190kc) W. Ida Thomson, violinist.			
9:30	8:30	7:30	6:30
WCOA (252m-1190kc) Anita O. Villar, vocalist.			
9:30	8:30	7:30	6:30
WJLD (275.1m-1090kc) Atlas male quartet.			
9:30	8:30	7:30	6:30
WMC (490.7m-600kc) Britling Melody Makers.			
9:30	8:30	7:30	6:30
KJLD (309.5m-920kc) Perry's orchestra.			
9:30	8:30	7:30	6:30
WCOA (252m-1190kc) Viscuso trio.			
9:30	8:30	7:30	6:30
WRVA (256.3m-1170kc) "Hansel and Gretel."			
9:30	8:30	7:30	6:30
WJLD (275.1m-1090kc) The Four Deuces.			
9:30	8:30	7:30	6:30
WJLD (275.1m-1090kc) Clement entertainers.			
10:15	9:15	8:15	7:15
KOA (332.4m-930kc) "Little Journeys to Big Places."			
9:30	8:30	7:30	6:30
WBAP (475.9m-630kc) Crowley Old Time Fiddlers.			
10	9	8	7
KJLD (309.5m-920kc) Crosby twins.			
10:20	9:20	8:20	7:20
WCOA (252m-1190kc) Chis aid Vic.			

Educational Features

Monday

Eastern	Central	Mountain	Pacific
2:30 p. m.	1:30	12:30	11:30
WJLD (275.1m-1090kc) Music appreciation.			
3:15	2:15	1:15	12:15
WJLD (275.1m-1090kc) Radiophon's Guide to Music.			
5	4	3	2
WGN (302.8m-990kc) "Correct English."			
5:30	4:30	3:30	2:30
WNYC (526m-570kc) Elementary German lessons, V. H. Berltz.			
6	5	4	3
WDAP (465.6m-820kc) School of the Air.			
6:15	5:15	4:15	3:15
WNYC (526m-570kc) Advanced German lessons.			
7:15	6:15	5:15	4:15
WKAT (491.5m-610kc) Columbia University.			
8:45	7:45	6:45	5:45
KDKA (309.5m-920kc) University of Pittsburgh.			
9:15	8:15	7:15	6:15
WDHO (239.9m-1240kc) Rolling college.			
9:30	8:30	7:30	6:30
WFAA (475.9m-630kc) Educational address.			
9:30	8:30	7:30	6:30
WJLD (275.1m-1090kc) Iowa state college courses.			
9:30	8:30	7:30	6:30
KJLD (309.5m-920kc) "Play and Games for Christmas Parties."			

TELEVOCAL QUALITY TUBES

Dependable and a Technical Triumph

A RADIO TUBE that is non-microphonic — won't short. Sold in matched units; tested, balanced and plainly marked detector, radio frequency or audio frequency.

Ask your dealer for this new and better radio tube that costs no more. If he can't supply you with Televocals, send us his name and address on attached coupon.

DEALERS AND JOBBERS — WRITE US

Televoval Corp'n.
67 A FIFTH AVE. — NEW YORK

Dealer's Name.....
City..... State.....
Your Name.....



Jewell

Pattern No. 135-C Radio Voltmeter "De Luxe"

Radio Voltmeter

Pattern No. 135-C Portable Voltmeter "De Luxe" for use in making tests on either three- or five volt tube sets and accessories.

Measures A, B and C battery voltages. Checks Filament Potential. Tests circuits, condensers, transformers, etc. Can be used for all-around experimental test purposes.

Design Features

Two scales of special radio ranges (0-7.5-150 volts). High resistance D'Arsonval Movement. Silver etched scale with black characters. Zero Adjuster. Three phone tipped leads which may be plugged into the tip jacks on the radio panel or used for making rapid battery voltage checks or for testing circuits. Silvered movement parts. Beautiful polished black bakelite case in handsome miniature ratchet clock design which will fit with the most luxurious surroundings.

Jewell has a most complete line of desirable radio instruments.

Write for Descriptive Form No. 1016

Jewell Electrical Instrument Co.
1650 Walnut St. - Chicago
"26 Years Making Good Instruments"

S. HAMMER RADIO CO., 307 Atkins Ave. Brooklyn, New York

Cockaday Sets Now Made Easier to Build by Our New "Ready-to-Wire" Plan

50% of Your Time, Work and Worry SAVED!

All you need do is to connect bus-bar according to diagram, solder and your set is finished. These Kits are sent to you completely mounted, and assembled on a Veneered Mahogany baseboard and genuine bakelite panel, drilled and engraved. Genuine parts used as listed below; exactly as used in Mr. Cockaday's Laboratory Model. COMPARE OUR OFFER!

LC-27 BROADCAST RECEIVER

SENIOR AND INTERMEDIATE POWER PACKS

1 Hammarlund mid-line dual condenser..... \$ 7.50	1 Sanson radio-frequency choke coil No. 85..... \$ 1.50
1 000275 mid..... 4.65	3 Aerovox mica fixed condensers, .00025 mfd..... 1.05
1 Hammarlund mid-line single condenser..... 4.65	1 Durham or Davon Resistor 4 meg..... .25
1 Precision Duo-Octetron coil set comprising one antenna coupler and two interstage couplers..... 10.50	1 Lynch Grid Leak Mounting..... .35
1 Amertran De Luxe first stage transformer..... 10.00	1 Carter Gen Jack..... .40
1 Amercheke No. 854..... 6.00	1 Carter variable resistance, 0-10,000 ohms..... 2.00
1 Dubilier or Tube 4 mid. filter condenser... 5.50	1 Eby binding posts..... 1.50
1 Dubilier filter condenser, 1 mfd..... .60	1 Benjamin U.S. Sockets..... 3.75
1 Mar-Co illuminated control, scale 0 to 100..... 5.00	1 Amerptrite No. 1..... 1.10
1 Mar-Co small controls scale 0 to 50 and 50 to 100..... 1.50	5 Genuine RC A Tubes..... 1.10
1 Carter Battery Switch..... .65	

MECHANICAL KIT, consisting of aluminum shields, binding post strip, decorated panel and Test bracket..... 12.50

READY-TO-WIRE KIT PRICE \$85.20

LC-27 SENIOR POWER PACK KIT \$65.20

LC-27 INTERMEDIATE POWER PACK KIT \$47.50

Silver Shielded Six Kits in Stock Now!

Hammarlund Roberts HI-Q Kits

Sole Headquarters for the **New Kenneth Harkness KH-27 Receiver**

The above Kits can also be obtained completely wired to specifications

Write for our interesting special circular which we have prepared on the LC-27 Receiver and above Kits

Authorized service station for the LC-27

DEALERS: WRITE FOR SPECIAL DISCOUNTS

Table with 4 columns: Eastern, Central, Mountain, Pacific. Lists radio stations and their frequencies.

Regular Monday Features

Eastern Time Stations

CFCA Toronto, Can. (356.9m-840kc) 7:15 p. m. organ recital, Clifford (42kc) Constellation, George Wilder Cartwright, 8:30 7:20 6:20
KDKA Pittsburgh, Pa. (509.1m-970kc) 8 p. m. feature, 9, light opera.

7:15. Caspar Lingenan entertainers; 7:45, Good Will Oakland and Chief Pontiac; 8, studio program.
WNEW New York, N. Y. (454.3m-550kc) 7 p. m. Hotel Commodore concert orchestra; John B. Kennedy; 8, Markel's dance orchestra; 8:30, Willys orchestra; 9:30, Ray W. West; 10, studio program; 10:30, Waldorf-Astoria grill dance orchestra.

KVOO Bristow, Okla. (374.8m-800kc) 6-7 p. m. Warner trio; 7:30, quartet; 8-9, Luckey's orchestra; 12, Earl Huntley orchestra; 11:30, organ.
WBAP Fort Worth, Texas (475.9c-630kc) 7:30-8:30 p. m. Classical concert; 9:30-11, old time music; 11:32, midnight musicals.

WSM Nashville, Tenn. (282.8m-1060kc) 6:45 p. m. Andrew Jackson hotel orchestra; 8, concert; 10, studio program.
WSOE Milwaukee, Wis. (245.8m-1220kc) 7 p. m. program; 8, Whozit.

Mountain Time Stations

KOA Denver, Colo. (322.4m-840kc) 8 p. m. Schermerman's Colorado orchestra; 8:15, studio program.
KOD State College, N. M. (346.6m-880kc) 7:30 p. m. State College orchestra.

Pacific Time Stations

KEI Los Angeles, Calif. (478m-610kc) 7-8 p. m. Owen Fallon's Californians; 8-9, popular program; 9:10, program, Walter M. Murphy Motors Co.; KFO, 10-11, program by Meikiejohn Brothers.
KEWB Hollywood, Calif. (252m-1190kc) 6-7 p. m. 10-11, Warner B. Ironic; KFLR Oakland, Calif. (361.2m-830kc) 6-6:55 a. m. Stanislas Hen's Little symphony; 9, Gonolovich; 9, "Chats about New Books," Joseph Henry Jackson.

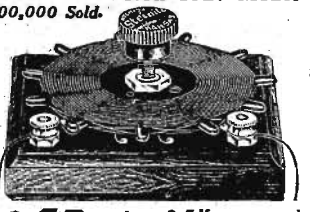
Central Time Stations

CKY Winnipeg, Can. (344.4m-780kc) 8:30-9 p. m. Studio program; 9:10, Stewart Warner concert; 10-11, Reliable battery hour; 11-12, Capitol theater revue.
KFAB Lincoln, Neb. (340.7m-880kc) 5:30-6:30 p. m. Hotel Lincoln orchestra; 8:30-10:30, musicals.
KFNF Shenandoah, Iowa (481.3m-650kc) 7 p. m. Seed concert; 11, old time music.

Steinite Interference Eliminator



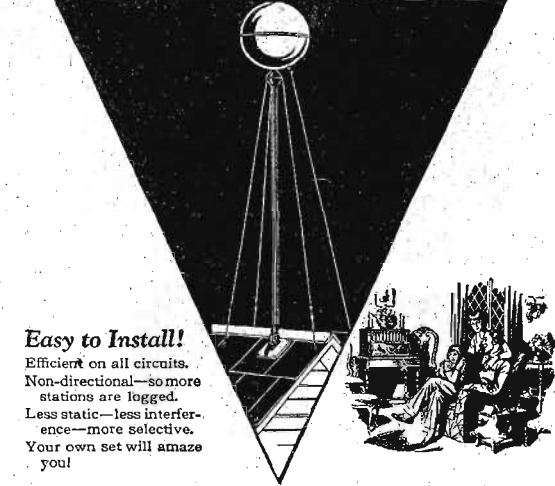
Greatest \$1 Value in Radio Today
No Radio Set Complete Without It
Select stations at will. Especially necessary for 1 and 2 dial controlled sets. Under present conditions the average set fails to bring in the desired stations properly.



Improved Results with Tube or Crystal
Try entirely at my risk the wonderful improvement this inexpensive little device will make in the reception of your set. Improves results on both crystal and tube sets that use any kind of aerial except loop antenna. Clears up reception wonderfully, increases volume, and partially absorbs static. Money-Back Guarantee.

\$1 Postpaid if you are not delighted with results you get your dollar back
The New Steinite 7-Tube Radio uses no batteries of any kind—only \$125. Loud Speaker Built In. Complete with tubes \$151 with nothing to buy. Operates from light socket in an hour. Write for descriptive literature before buying an expensive Battery Set. Also Steinite Long Distance Crystal Set \$6—6-Tube Battery Set \$45. WRITE TODAY!
STEINITE LABORATORIES, 408 Radio Bldg., ATCHISON, KANSAS

"Super Ball" Antenna



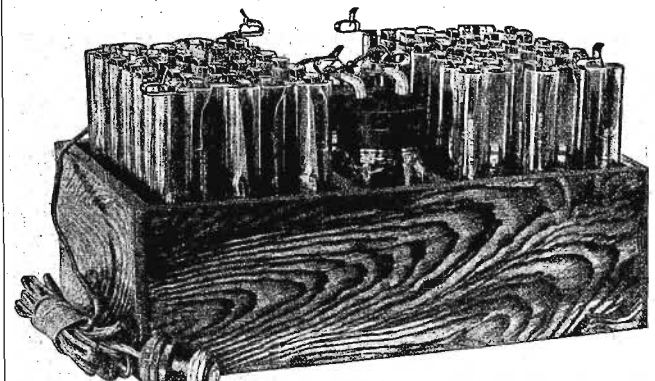
Easy to Install! Efficient on all circuits. Non-directional—so more stations are logged. Less static—less interference—more selective. Your own set will amaze you!

Get the Station You Want Without Interference!

You will actually be amazed at the finer results you can get by using a "Super-Ball" Antenna. Your radio will have greater selectivity—the tone will be clarified and static will be reduced to the very minimum.
The "Super-Ball" is non-directional, easy to install, will not corrode—and it lasts a lifetime! 30-Day Unqualified Guarantee by the Manufacturer. See your dealer today. Any set is better when the "Super-Ball" Antenna is used.

FAIR-LANGE INCORPORATED DETROIT, MICH.
MILWAUKEE, WIS.

90 Volt "B" Power Unit \$12.75



RUMOR has had it this NEW HAWLEY ADVANCED POWER UNIT was coming—and here it is. Hawley Storage "B" batteries have been standard for over 5 years and the same quality—the same standard of workmanship comprise this unit with its new ingenious hook-up and built-in charger, giving the utmost in B-Eliminator simplicity. Positively guaranteed not to give the slightest kind or trace of a hum or line noise. Simply plug it into your electric socket—and forget it. Any inexperienced person can hook it up in two minutes, as all voltages, including those for any kind of detector, are all plainly marked. Operates any 1 to 10-tube set. Does not contain any acid. It's so good—such true smashing value—that my 5-year-old 30-day trial offer returned applies. You've got to see it—hear its operation—to fully appreciate this statement. The prices—only slightly more than ordinary dry cells—90 volts, \$12.75; 112½ volts, \$15.25; 135 volt, \$17.50. For 150 to 120 volts, 25 to 130 cycles alternating current only. Special sizes to order of any voltage. Knock-down kits at still greater savings. All complete as above—nothing to purchase extra. Further covered in my regular two-year guarantee. Ample stocks—all packed—same day shipments and your order is all I need to speed it on its way to you. Simply say—ship C.O.D.—pay expressman its cost plus small transportation charges, and you'll thank me later—or write for my free literature, testimonials, etc.
B. Hawley Smith, 325 Washington Ave., Danbury, Conn., U. S. A.
Mfr. of "A" Power Units, "B" Power Units, "A" Storage Batteries, "B" Storage Batteries and A & B Chargers, Including Trickle-ers.

**TUESDAY, DECEMBER 21
Headliners**

Eastern	Central	Mountain	Pacific
8:30 m.	7	4	3
WTIC (475.9m-630kc) Ebenheim trio.	3		
WEAF (491.5m-610kc) Evan Davies, impersonator.	6:10	5:10	4:10
WLW (422.3m-710kc) Santa Claus.	7:30	6:30	4:30
WGY (379.5m-750kc) "The Earth and the Other Planets."	8	6	5
WBAO (293.5m-1020kc) On the Hills of Judah.	1	1	1
L. A. Vivian			
WFAA (475.9m-630kc) Marion Wakefield Romine, literary chat.	7	6	5
WESY (374m-592kc) Christmas carols.	8:10	7:10	6:10
WGDS (315.6m-950kc) Perez Mackaye, poet.	8:15	6:15	5:15
WLS (344.6m-870kc) Prof. Davis Edwards.	8:30	6:30	5:30
WRAP (475.9m-630kc) Waggoner Hawaiian trio.	9:30	7:30	6:30
WGDS (315.6m-950kc) Brooklyn string quartet.	10:30	8:30	7:30
WHAAS (399.5m-750kc) Carl Zoeller's Melodists.	11	9	8
WLW (422.3m-710kc) Uncle Jack's barnyard family.	11	9	8
KLDS (440.9m-680kc) Mrs. Herbert Spokesfield, pianist.	11	9	8
KOIL (318.5m-980kc) Lions Club program.	11	9	8
WCBD (344.6m-870kc) Cornet quartet.	11	9	8
WBAF (475.9m-630kc) Ft. Worth Club orchestra.	11	9	8
WHD (326m-570kc) Prof. Paul Stoye.	11	9	8
WLAN (359.3m-750kc) Kosar auditorium.	11	9	8

Eastern	Central	Mountain	Pacific
8	7	6	5
WLW (422.3m-710kc) Formica orchestra.	9	8	7
10:30	9:30	8:30	7:30
KOA (322.4m-930 kc) Ray-O-Vac Twains.	11	10	9
WQAW (526m-570kc) Pat Kroh's Ormada orchestra.	11	10	9
WFAA (475.9m-630kc) Jimmy Joy's orchestra.	11	10	9

**TUESDAY, DECEMBER 28
Headliners**

Eastern	Central	Mountain	Pacific
8 p. m.	7	6	5
WRN (374m-602kc) Overture to Marriage of Figaro.	8:30	7:30	6:30
Excelsior, Excelsior Gypsy Baron, Ballet La Source, Serenade Hopak, Down South, in a Night Club.	9:30	8:30	7:30
WTIC (475.9m-630kc) Ivella Ensemble.	10:30	9:30	8:30
WLS (344.6m-870kc) Prof. Davis Edwards.	11	9	8
WTIC (475.9m-630kc) Margery Nielsen, pianist.	11	9	8
KLDS (440.9m-680kc) Marvel de Voll-Fell, violinist.	11	9	8
KOIL (309.5m-980kc) Jack Halpine, Jr.	11	9	8
WTIC (475.9m-630kc) Travelers Symphonic ensemble.	11	9	8
WHD (326m-570kc) Hotel Gravano orchestra.	11	9	8
KPRC (289.3m-1000kc) Polar Wave Ice Palace Music.	11	9	8
WQAW (526m-570kc) Pat Kroh's Ormada orchestra.	11	9	8

30 DAYS FREE TRIAL

7 Tube Set Single Dial Radio



The Metrodyne

ONLY ONE DIAL TO TUNE

Retail Price \$75.00
COMPLETELY ASSEMBLED
Big discount to AGENTS AND DEALERS

WORLD'S GREATEST RADIO! Wonderful Offer Direct from Factory. This marvelous 7 tube single dial control radio set will be shipped on 30 days free trial anywhere in the United States, just to prove that it is the greatest long distance receiver made.

F. L. Warnock, Greentown, Ind., writes: "I received the Metrodyne in good shape and am more than pleased with it. Got stations 2000 miles away." C. J. Walker, Mariposa, Calif., writes: "I believe that these one-dial sets are going to be excellent sellers. I had no trouble in tuning in stations enough to satisfy anyone, so you will please send me 1 more set." Thousands of similar letters received.

The Metrodyne Single Dial is a 7 tube Tuned Radio Frequency set, approved by America's leading radio engineers. Highest grade low loss parts, magnificent walnut cabinet. Exposed metal parts are finished in 24 karat gold. Genuine bakelite panel, artistically designed in gold. Easy to operate. Only one dial tunes in all Stations. Dial is electrically lighted. 1,000 to 5,000 miles on loud speaker. Powerful volume—clear, distinct reception. Shipped to your home for 30 days free trial.

Big Profits to Agents and Dealers!



METRODYNE SUPER SIX RADIO

Wonderful 6 tube, long distance radio set. Approved by America's leading Radio Engineers. Easy to operate. Dial is leg easily. Tune in your favorite stations instantly on the same dial numbers every time. No guessing. 30 days free trial. Mr. Howard of Chicago said, "With 6 Chicago Stations on the air I heard in 17 out of 20 stations, including New York and San Francisco on loud speaker every hour and clear."

6 Tube Set \$48.50
RETAIL PRICE COMPLETELY ASSEMBLED

Write for Our Offer

METRO ELECTRIC CO., 2163 N. California Avenue, Dept. 176 Chicago, Illinois

Write! Get our offer before buying a radio. Read the hundreds of letters from users who acclaim the Metrodyne as the greatest radio set in the world. None better at any price. A postal or letter brings complete information, testimonials, wholesale prices and our liberal 30 days free trial offer.

STOPS RADIO INTERFERENCE

ON YOUR SET. SIMPLE AND EASY TO OPERATE

NO TOOLS REQUIRED TO INSTALL. SIMPLY ATTACH YOUR AERIAL LEAD IN TO ONE OF THE LEADS ON THE LIMITATOR AND RUN THE REMAINING LEAD TO YOUR ANT. POST ON YOUR SET.

This is a new interference eliminator that limits the interfering stations from spreading all over your tuning dial. It keeps them separated from interfering with each other, helps to bring out some stations stronger. Built with the new type low-loss cyclotron coil, ready and substantially constructed, nothing flimsy, everything rugged. Don't confuse with anything you have ever tried. Wonderful for broad tuning sets. Works on any aerial except a loop. *Try The*

"KING LIMITATOR"

BEST EVER OFFERED FOR ONLY ONE DOLLAR

MONEY BACK IF NOT SATISFIED WITH RESULTS.

ARLINGTON RADIO MFG. CO.
BOX 42 FIRESTONE PK. STA. AKRON, OHIO

POSTPAID

Pin your Dollar to this ad. Name _____ Address _____

MAKE OF SET? _____

ORDER ONCE

THE BEST IS ALSO THE EASIEST TO BUILD!



BREMER-TULLY POWER-SIX

The following statement of Gerald M. Best, technical editor and superheterodyne authority means much to fans who know the B-T record—

"The new Bremer-Tully Power-Six is by far the best Bremer-Tully receiver yet developed.

"Its remarkable selectivity and simplicity of operation leads me to believe it will be one of the season's most popular circuits. It is one of the easiest circuits to wire of any I have seen. Its engineering principle is sound.

"Congratulations to Bremer-Tully on this new development."

A 13 Year Old Fan Finds It Easy to Build

Bloomington, Ill., Nov. 4th, 1926

I am only thirteen years old but thought the Counterphase-Six the simplest set I had ever built. I have never heard a radio so selective combined with such amazing tone quality and volume.

In three weeks I have had seventy-four stations from Winnipeg, Canada to Miami, Florida; Los Angeles, Calif., and Springfield, Mass.

The essential parts cost \$41.50 in a kit. All high-grade dealers carry the Power-Six kit as well as B-T condensers, audio Transformers, Sockets, Dials, and the B-T B-Power Unit.

BREMER-TULLY MFG. CO. 520 SO. CANAL ST. CHICAGO, ILL.

Flexibility



Majestic "B" Current Supply

delivers pure direct current from your light socket

Majestic Standard-B
Capacity seven tubes or six plus 1 power tube. 45 milliamperes at 135 volts.
\$32.50
West of Rocky Mts., \$35.00

Majestic Super-B
Capacity one to twelve tubes, including the use of power tubes. 45 mills **\$35.00** at 150 volts.
WEST OF ROCKY MTS., \$37.50

Majestic Master-B
For Radiola 25, 28, 30 and Super heterodynes. Operates power tubes. 60 mills at 150 volts.
\$42.50
West of Rocky Mts., \$45.00

The voltage can always be accurately adjusted to meet the varying conditions of every city and on any set. Economical—cost a fraction of a cent per hour. No acid or liquids; Uses Raytheon Tube; No filament to burn out.

No Hum—Superior to Any Source of Power

See your dealer today. Insist on a demonstration on YOUR set immediately.

(Can be purchased on deferred payments)

ORIGSBY - GRUNOW - HINDS - CO. 4576 ARMITAGE AVE CHICAGO-ILL

WMC Memphis, Tenn. (499.7m-600kc) 8:30 p. m. Hotel Gayoso orchestra; 11, midnight frolic.
 WOAI San Antonio, Tex. (524m-700kc) 8:30-9:30 p. m. Gebhardt Mexican players.
 WJL Davenport, Iowa (483.6m-620kc) 7:30-8 p. m. WEAF; 9:30-10:30, lecture.
 WOOD Grand Rapids, Mich. (241.8m-1240kc) 8 p. m. studio program.
 WOQ Kansas City, Mo. (279m-1080kc) 8-9:30 p. m. devotional music.
 WOW Omaha, Neb. (528m-570kc) 6 p. m. Henry Thornton, organist; 6:30, Lillian Madsen, popular entertainer; 6:30, American bridge; 9, popular and old time music; 10, orchestra.
 WQJ Chicago, Ill. (447.5m-570kc) 7-8 p. m. Rainbow Gardens orchestra; vocal selections; 10-2 a. m. Rainbow Gardens orchestra; frolic.
 WSB Atlanta, Ga. (423.3m-700kc) 9 p. m. headliner; 10:45, concert.

Mountain Time Stations
 KOA Denver, Colo. (322.4m-930kc) 9 p. m. bridge.
Pacific Time Stations
 KFI Los Angeles, Calif. (467m-642kc) 7-8 p. m. Howard's Quality serenaders; 8-9, grand opera program; 9-10, varied hour; 10-11, Azure Music club.
 KFVB Hollywood, Calif. (222m-1190kc) 6-7 p. m. Pontiac dinner hour; 8-9, news and studio program; 9-10 p. m. musicals; 10-11 p. m. Warner Brothers frolic.
 KGO Oakland, Calif. (361.2m-830kc) 6-6:55 p. m. Stanislas Rem. Litta symphony; 8-9, Fugitive; 9, surprise broadcast.
 KJR Seattle, Wash. (384.4m-780kc) 8 p. m. studio program; 8:30-10, program.
 KNX Hollywood, Calif. (336.2m-890kc) 8 p. m. program; 9, musicals; 10, frolic.
 KFO Los Angeles, Calif. (423.3m-700kc) 7-7:30 p. m. orchestra; 8-9, organ; 9-10, Gypsy and Maria; 10-11, orchestra.

Tuesday, silent night for: CFCA, KFH, KFKX, KFUD, KIX, KJTB, KJTL, KJVM, KJWB, KJWD, WAMD, WBBR, WCOA, WCMC, WCCF, WOS, WRYA, WSMB, WSUL, WTAM, WTIC.

Bradley Leak

THE PERFECT GRID LEAK

Provides a noiseless range of grid leak resistance from 1/4 to 10 megohms. Assures most effective grid leak resistance value for all tubes. Small grid condenser (0.00025) is separate. Metal parts nickel plated. One hole mounting.

Allen-Bradley Co.
 Electric Controlling Apparatus
 290 Greenfield Avenue Milwaukee, Wis.

SYD LIFE LONG BATTERY

UNCONDITIONAL 2-YEAR GUARANTEE
 Taken from Laboratory News Notes which appeared in The Chicago Daily News. The Chicago Daily News Radio Laboratory for a test was found satisfactory.



100 VOLTS With a Complete Charger. **\$15.50**
145 VOLTS With a Complete Charger. **\$21.50**

Manufactured and Sold by
SYD STORAGE "B" BATTERY CO.
 Dept S, 1462 1/2 South Wabash Ave., Chicago
 Opposite Coliseum, California
 Open till 8 P. M. Sunday till 2 P. M.
 Mail Orders Filled

SUBANTENNA!

Amazing New UNDERGROUND ANTENNA
Eliminates All INTERFERENCE
Gets Distance Clearly.

Here you are, "Distance" fans! Install this new type underground "pick up" system. Get distant stations loud and clear like local. SUBANTENNA banishes STATIC and all other air noises. Lets the broadcast come through clean.

Uses Filtered Ground Waves. Follower line leaks, STATIC and all air noises are filtered out from the broadcast and grounded by SUBANTENNA before the broadcast reaches the set. The greater distance and clarity of your set will amaze you.

Nothing Else Like It. Not just a consists of special composition wire differently insulated and sheathed in a lead jacket and containing a series of three "building up" coils. Nothing else will do what SUBANTENNA does. Nothing else in the world like it.

FREE TRIAL OFFER! Want you to test SUBANTENNA. We want you to enjoy the thrill of loud, clear DX reception when your old aerial will give you nothing but STATIC and crackles. Write at once for FREE TRIAL OFFER and scientific explanation of SUBANTENNA. Write NOW!

CLOVERLEAF MANUFACTURING CO.,
 2716-S. So. Canal St. Chicago.

The Reader's View

(Continued from page 15)

Where would we be if WLS, WHO, WOV and many other stations that put out programs that the people enjoy, would start to advertise, as some of our other Iowa stations do? There certainly should be a law enacted (and I am sure there will be unless these offenders' let up), that will limit such procedure. Hardly an evening passes but we are forced to listen to KPFW, KMA or other stations that have no talent whatsoever, and are shut out from such programs as Walter Damrosch and the New York Symphony orchestra, the Atwater Kent hour, the Goodrich Silvertown Cord orchestra and others of note.

Some people may like to listen to some of their help sing, play and fiddle, but they shouldn't think that the people in general give a "hoot" for such stuff. When neurodynes, G— and super-heterodynes will not tune out KMA and KPFW in ten points on the dials, it is high time that those "gentlemen" should wake up.—C. S., Pringhar, Iowa.

More Rocks for Henry and May
 I am enclosing a clipping which I think represents the frame of mind in which the majority of Iowa Radio fans look upon the Shenandoah stations.
 (The clipping, from the Eagle Grove Times, is in the form of a satirical letter to Henry Field, of KFNF. It is too lengthy to be reprinted here, despite its merit.—Editor's Note.)
 Their new wave length interferes with WJZ. My worst case of trouble on the changes in wave length is KOIL messing up the programs from KDKA. I have a very selective set, a S— C—, and formerly had no trouble.—L. E. D., Brooklyn, Iowa.

FREE LOG

64 Page Perpetual



NEW 64 PAGE Reversible Log
 THE RADIO REVISIONIST'S BOOK

New 64 page automatic, loose leaf Log & Data Book. We publish increased sheets on changes in call letters, lengths, wattage, company, addresses, etc., occur, and so new data comes out—deduction instantaneous by wave lengths—by station, class, etc. Trouble free. Directory Radio Notes, Radio Hobbies, Digests and sections for ideal aerial. Trouble preventers. Chart showing dial setting for each station. One—two—three—four—five—six—seven—eight—nine—ten—eleven—twelve—thirteen—fourteen—fifteen—sixteen—seventeen—eighteen—nineteen—twenty—twenty-one—twenty-two—twenty-three—twenty-four—twenty-five—twenty-six—twenty-seven—twenty-eight—twenty-nine—thirty—thirty-one—thirty-two—thirty-three—thirty-four—thirty-five—thirty-six—thirty-seven—thirty-eight—thirty-nine—forty—forty-one—forty-two—forty-three—forty-four—forty-five—forty-six—forty-seven—forty-eight—forty-nine—fifty—fifty-one—fifty-two—fifty-three—fifty-four—fifty-five—fifty-six—fifty-seven—fifty-eight—fifty-nine—sixty—sixty-one—sixty-two—sixty-three—sixty-four—sixty-five—sixty-six—sixty-seven—sixty-eight—sixty-nine—seventy—seventy-one—seventy-two—seventy-three—seventy-four—seventy-five—seventy-six—seventy-seven—seventy-eight—seventy-nine—eighty—eighty-one—eighty-two—eighty-three—eighty-four—eighty-five—eighty-six—eighty-seven—eighty-eight—eighty-nine—ninety—ninety-one—ninety-two—ninety-three—ninety-four—ninety-five—ninety-six—ninety-seven—ninety-eight—ninety-nine—hundred.

Send No Money Just pay postman for service Postpaid if pay with order. Money refunded if not delivered. Order today—NOW—postpaid.

Radio Printers, Dept. 4419S, Marengo, Ill.

B BATTERY ELIMINATOR

Only \$7.95



MONEY-BACK GUARANTEE
 No more worry with "B" Batteries! Hook up a Roll-O-Battery Eliminator and forget battery troubles forever. This wonderful new invention means better reception, sharper tuning. Gives you more real pleasure from your set.
 Completely Equipped—No "Extras" to Buy
 Operates perfectly on direct or alternating current, giving up to 30 volts current, and using the full wave of the power supply. Simple directions enclosed—anyone can plug it in to any kind of set up to six tubes. Constant voltage gives set more power. Costs no more than a pair of good "B" Batteries. Solidly built in beautifully finished metal case, with genuine Bakelite top.
SEND YOUR ORDER NOW
 Don't blame your set because run down "B" Batteries won't let it work right. Order your Eliminator NOW! Write name and address on a piece of paper, pin a dollar bill to it, and mail it TODAY. Pay postman balance (\$8.95 plus a few cents postage) when he delivers your Eliminator. Use it ten days. If not more than satisfied, keep it and get your money back. If not, return it and get your money back.
THE ROLL-O BATTERY CO.
 Dept. 2-5, 3d & Sycamore, Cincinnati, O.



This is a Radio Christmas

Make it Safe with a Belden Fused Radio Battery Cord



FOR a perfect Radio Christmas, protect the new tubes and batteries, and also avoid fire hazard from crossed wires by hooking up your set with a Belden Fused Radio Battery Cord.

The tiny A and B-battery fuses concealed in the little two-piece bakelite shell, can be easily inspected.

This handy cord also improves the appearance of the set and eliminates all loose wires.

Ask your dealer for a Belden Fused Radio Battery Cord.



Christmas Gifts that please and endure
 A Belden Aerial or a Superadio Antenna kit makes an acceptable gift that gives service and joy to the one who gets it. The Belden Superadio Antenna Kit is very complete and provides everything required to make an ideal aerial and ground. Delight your friends with a Belden Superadio Antenna Kit.



Belden Manufacturing Co.
 2310A S. Western Ave., Chicago, Ill.

The Radio Listener's Red-Book

Helps "Tune In" Stations Never Before Received

Scientifically arranged—miles ahead of a mere log. Amazing results—quick dial setting for every station in the country.
 Helps locate unlogged stations never gotten before. Gives new stations and latest changes. Shows broadcast and time division map in colors.

3-Way Listing—Quick Cross Index
 (Meters—Cities—Call Letters)
 The "Radio Doctor" section gives trouble information and remedies.
 Increases your satisfaction in your set 100 per cent. 28 pages, clearly printed on heavy white paper. The Radio Listener's Red Book is the approved radio listing, logging and tuning-in authority. Edited and kept up to the minute by radio experts. The one book you absolutely need for utmost radio pleasure.
 If your dealer can't supply you, a copy 25c will be mailed postpaid on receipt of

ANDREWS RADIO DIRECTORY AND LOG-BOOK
 Ft. Wayne, Ind., P. O. Box 155-A

DEALERS
 This is the big seller
 50 or less 40% (15c each)
 100 or more 44% (14c each)
 Special Quantity Prices

More than an ordinary log

Write for **Free Hampton-Wright Radio Catalog**

Enjoy the Pleasures of Radio this Christmas Through Hampton-Wright

This great catalog lists hundreds of efficient items that help you secure fine radio reception. All over the country radio enthusiasts are using Hampton-Wright products successfully. Don't delay—write for YOUR catalog in time for the holiday season. Specify Catalog No. C-8.

P. O. Box 181 HAMPTON-WRIGHT, Inc. Indianapolis, Ind.

Make this a Hampton-Wright Radio Xmas



BUILDING REGENATROL

(Continued from page 7)

For mounting the parts on panel and subpanel, you will need the following screws and nuts:

Thirty 3/8-inch 6-32 flat or oval head brass machine screws.

Twenty 1/2-inch 6-32 flat or oval head brass machine screws.

Four 3/4-inch 6-32 flat or oval head brass machine screws.

Twenty-five 6-32 hexagon brass nuts.

If you use nickel-plated screws and nuts it will improve the appearance of your receiver.

This article on the construction of the Bruno Regenatrol receiver will be concluded in the next issue with a complete pictorial wiring diagram showing the connections on the layout from terminal to terminal and complete instructions for mounting the parts and wiring. Information on the operation of the receiver will also be given.

Meanwhile, builders anxious to finish, can assemble the set, using figures 3 and 4 as guides.

MIKE AND MOVIE STARS

(Continued from page 5)

experiences with Radio. She was scheduled to appear before KNX and while visiting one of her best friends, Leatrice Joy, the latter suggested she convey a message to Lucille Rickson, a friend of the two then in ill health and who, as movie fans will remember, later died.

This she promised to do, but when the time came to say the words into the microphone the thought of attempting to convey her personal thoughts to a dear friend while the whole world listened in was too much and she burst into tears.

"Imagine standing up and trying to speak a piece for nobody," snorted Lew Cody, when mention of Radio was made to him. All the same he is quite a Radio hound, although he still insists getting used to the microphone is like the stage actor getting used to the camera or the American tourist in France eating snails—they do it but it never seems natural.

Lew Cody is the official master of ceremonies for the movie colony in Holly-

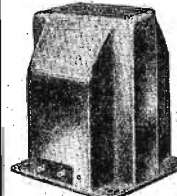
wood. He is often on the KFI midnight frolics on Saturday nights and serves as liaison officer for the more inexperienced members of the Metro-Goldwyn studios when they are confronted with microphone appearances.

"I had to play with lions in the Devil's Circus," explained Norma Shearer when asked about her reaction to the mike, "and (Continued on next page)

—as usual—
CARTER
Rheostats—Switches
Jacks
are specified in

Bruno-Regenatrol
and other leading circuits, because
of preferred: Design and Quality

In Canada—Carter Radio Co., Limited, Toronto



Success
with
Bruno
Regenatrol
demands

use of the
specified
Samson
Transformers
and Chokes



The pleasure you get from your set largely results from its tone quality. This depends principally on two things—keeping all radio frequency currents in their own circuits, a job only Samson R.F. Chokes can perform because of their patented helical winding, and amplifying impartially all notes. Only the Patented Helical Winding of Samson Audio Frequency Transformers equally amplifies all notes through nullification of distributed capacitance effects.

Price, Choke No. 85, \$1.50
Transformers, all ratios, \$5.00

Samson Electric Co.
Main Office MEMBER Sales offices in
Canton, Mass. RMA all large cities

Again
ELECTRAD
Parts are Mentioned
Use
ELECTRAD
Certified
Mica Condensers



For Perfect Filament Control
3 AMPERITES
are specified in the
BRUNO REGENATROL Receiver
described in this issue.

Radiall Company
Dept. R.D.-7, 50 Franklin Street, New York City

At All
Dealers



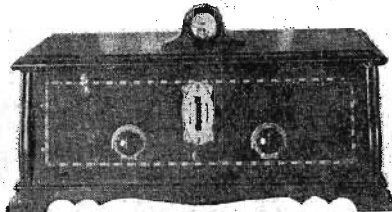
The "SELF-ADJUSTING" Rheostat

LIGNOLE Chosen by Joseph Calcaterra for
the Bruno Regenatrol Receiver
AS DESCRIBED IN THIS ISSUE

The most discriminating radio engineers and designers now regularly choose LIGNOLE, the new specially treated wood that meets all panel requirements.

Completely drilled and decorated panel can now be obtained for such prominent circuits as Victoreen, Madison-Moore, St. James, Bernard, Karas Equamatic and others.

If unable to obtain from your local dealer, write us direct.



FREE Write for interesting report on Lignole for Radio Panels by Professor Guy M. Wilcox, Senior Professor of Physics, at Armour Institute of Technology.

THE LIGNOLE CORPORATION 504 S. Dearborn St. CHICAGO, ILL.

THE Simplicity of tuning
THE Efficiency of the Bakelite Shaft Condensers
and the Beauty of the Bronze Front Plate

Makes the "UNITUNE" the most desirable tuning device ever designed.

ALL BRUNO "UNITUNES" may be mounted on a panel with only two screws.

The basic "UNITUNE" consists of a frame upon which are mounted two condensers operated independently by two bakelite drums projecting thru a beautiful bronze plate. It may be obtained in all standard capacities. Completely assembled it lists at \$11.00.

Other "UNITUNES" assembled with one or more Quartzite Coils for all popular circuits range from \$12.00 to \$21.00.

Booklet of Instruction and Blue Prints—25c
BRUNO RADIO CORP., LONG ISLAND CITY, N. Y.

Build This New
"Bruno"

Regenatrol Receiver

As Described in This Issue by
Joseph Calcaterra

Complete Kit of Parts \$60⁰⁰
Ready to Wire With \$60⁰⁰
Instructions

All regenerative UNITUNE kits are licensed under the Armstrong patent No. 1,113,149 and are assembled by the Clapp-Eastham Company exclusively for The Bruno Radio Corp.

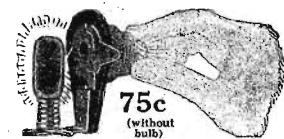
Other Popular Kits Ready for Shipment. Every Kit Includes Full Instruction Sheets for Wiring.

New Improved
Diamond of the Air Kit
5 Tubes
Complete Parts, \$37.50

Radio World's Popular
Bernard 6-Tube Kit
Complete Parts, \$40.00

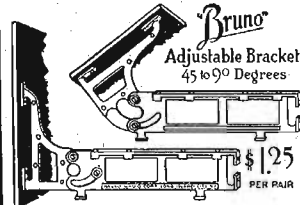
- Silver-Marshall Shielded Six.....\$95.00
- Hammarslund-Roberts Hi-Q..... 63.05
- New Samson Dual Receiver..... 71.35
- L. C. 27 Receiver..... 87.25
- Henry-Lyford Receiver..... 69.50
- Daven Bass Note Receiver..... 65.00
- Improved Browning Drake Receiver... 65.90
- Four Tube Diamond of the Air..... 30.00
- New Karas Equamatic..... 88.70
- Cockaday's Power Pack..... 65.15

Also B. Eliminator parts and Speakers in Stock.
We carry a complete stock of standard merchandise.



75c
(without bulb)

BRUNO LIGHT SWITCH provides a visual indication when the batteries are turned on.
When mounted under the UNITUNE drum, it reflects sufficient light on the scale to make it visible in the dark.
TURN IT—IT LIGHTS! PUSH IT—IT'S OFF!



Adjustable Bracket
45 to 90 Degrees
\$1.25 PER PAIR

Die-cast Aluminum, will beautify and strengthen any set. Also in non-adjustable, \$1.00 per pair.

SEND IN FOR BOOKLET
B. C. L.
RADIO SERVICE CO.
INCORPORATED
221-D Fulton St., N. Y. C.

(Continued from page 29)

I admit I was frightened. But I think the first two minutes before that Little disk at KEFI frustrated me a great deal more. There's something about it I can't explain—it just gets you—that's all!

Betty Bronson, the Peter Pan girl, is a real star of the air as well as the screen. She talks easily, clearly and the friendliness of her character gets over to the Radio audience in no uncertain way. Naturally she likes to broadcast.

When it comes to comedy before the microphone, KFWE and the Warners again have it. Monte Blue, Syd Chaplin and the latter's director, Chuck Reisner, almost have a monopoly although another director, Bill Beaudine, runs a close race.

The usual prescription for a laugh riot over the air is to bill Chuck Reisner and Syd Chaplin with Charlie Wolfman, KFWE's announcer, as foil. Years of experience as gag man and timing laughs in such successful comedies as Charlie's Aunt, Nightie, Nightie Nurse and the Better 'Ole, make the Chaplin-Reisner combination unbeatable.

Monte Blue's comedy is none the less sure fire although a little more subtle and dry.

In the filming of Warner's new big special, "So This Is Paris," which was directed by Ernest Lubitsch, two whole days of action were microphoned without the director's knowledge, who would have hit the ceiling with many puffs if it had been suggested his work be restricted by remembering there was an open microphone on the set.

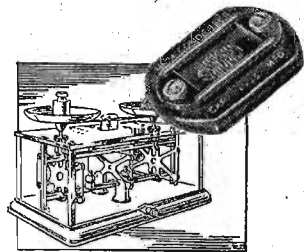
The scene was a big one, a cafe in Paris. One of the incidents of the story comes when the wife, listening to dance music by remote control from the cafe,

overhears her husband talking to another woman during an intermission of the orchestra. Taking advantage of the fact a microphone had to be used in the scene at the cafe, Frank Murphy, chief electrical engineer of Warner Bros., simply ran a microphone lead to the operating room of KFWE, but a hundred feet away and put the whole scene on the air via KFWE. This is undoubtedly the first time the actual directing of a bona-fide movie has been put on the air.

Los Angeles fans not only get to hear their favorite actors and actresses over the Radio but in addition are enabled to listen to many instructive talks about the many technical sides of the movie industry. J. Stuart Blackton of the old Vitagraph company, and one of the pioneers of the film world, occasionally loosens up with some interesting history; Eve Unsell, famous scenarist, as well as others, has given a series of talks on scenario writing; Adola Rogers St. John, known for her short stories as well as film stories, also has given talks about the troubles and griefs behind the creation of brain children for the celluloid drama, production managers, art directors, gag men, painters, carpenters and almost everyone but

the poor misjudged assistant director gets on the air in Hollywood. Even Rin-Tin-Tin has his day and his growl broadcast.

Most of the prominent film people in Hollywood have been on the air at one time or another. Some of them like it, some do not, some microphones good, some not so good and some ought never be allowed to associate with Radio in any way except as dial twisters. But taken as a whole, due to years of training on the stage and before the camera, the average star of pictures can get up before the microphone and entirely aside from the interest created in the listeners' mind by the magic of a name, make a talk or put on a skit that compares very favorably with anything that is heard. Most of them are keenly aware the day is coming when Radio and movies will combine into one medium of entertainment.



"Weights out right capacity as accurately as the apothecary weighs out a precious drug." A. C. L.

NEW INFRADYNE KIT
ALL GENUINE PARTS IN STOCK NOW!
FREE LISTING
Listing thousands of new radio parts, kits, furniture, accessories and complete radio sets, at prices that save you money. Write for your copy now, it's free. Dept. 6.
THE HARCO CO., 1255 S. Wabash Ave., Chicago, Ill.

Applause Cards FREE
Your Name & Address on Each Card
FREE LOG
with 1st Order. Applaud your favorite radio stars and programs. Quality cards and printing. All the Radio, \$2 per 100. We include each coupon, each card for each and you have your \$2 back and YOUR cards absolutely Free or collect for each coupon one extra \$2.
Send No Money just pay postman \$2 (see pay postage) and FREE Log. Your \$2 refunded if not delighted. Write today—Radio Printers, Dept. 9419C, Marengo, Ill.

Tune by Wave Lengths
Bring in Stations You Never Got Before
RADEX TUNING CHARTS
Show wave length you are tuned to. Tell where to set dials for every station. Identify programs received without announcement.
Contain Broadcasting Map and Distance Table
The only Complete list of stations published For Any Set and Any Dial
Midwinter Edition Now Ready
Postpaid 25c; send coin or U. S. stamps
"I have seen a great many logs but RADEX is the handiest I have seen anywhere."
D. O. Millison, 310 Warren Ave., Topeka, Kans.
THE RADEX PRESS
P. O. Box 143-LB Cleveland, Ohio

The Write Gift for Children
Individual Names 100
PENCIL SETS
Do Luxe Set: 1 post paid
Finest genuine sheepskin leather case with coin pocket. Richly embossed. Any name engraved in 18kt. gold. Contains pencils and penholder in assorted colors, point protector, ruler, sharpener. Absolutely supreme in its class.
Send Check, Money Order or U.S. Postage.
U. S. PENCIL CO., Inc.
487 Broadway Dept. R. D. New York

6 Volt STORAGE RADIO "A" BATTERY
Most amazing battery yet ever offered! A genuine World Quality Radio "A" Battery with 26 ampere capacity for only \$5.00
It is just the thing for Trickle charger. Famous World Quality assured. Equipped with Solid Rubber Case
An assurance against acid and leakage. Order shipped same day—subject to your examination on arrival. Extra offer: 5% discount for cash in full with order. ACT TODAY!
WORLD QUALITY BATTERY COMPANY
1219 S. Wabash Ave. Dept. 168 Chicago, Ill.

INSIDE AERIAL
DISTANCE SELECTIVE NOT A LOOP
NOT AFFECTED BY WIND, RAIN, SNOW OR LIGHTNING
CREDITED BY APPROVAL of United Radio Laboratories
PRICE \$5.00
Ask about our NOISE KILLER
INTERSTATE SIGNAL CO., Dept. 1, COLUMBUS, OHIO

American Radio Now—50% DISCOUNT RADIO!
BIG NEW 1927 CATALOG-FREE
Dealers, Agents, Set Builders—get our big 1927 Catalog—225 nationally advertised lines. Lowest prices in America! Largest, most complete stock. Radio's latest developments. It's FREE—send for your copy now. AMERICAN AUTO & RADIO MFG. CO., Inc. 1443-B McCee Street, Kansas City, Mo.

Yale GROUND HOG
DOUBLES POWER AND DISTANCE
Marvelous newly-invented ground gives 100% improved reception. Doubles power and distance. Stops leakage. Reduces static. Stops fadelluc even in midsummer. Results never before equalled, users say. Satisfaction guaranteed.
Proven absolutely essential to clear, powerful distance reception. Dry and holds moisture indefinitely. Highly sensitive to radio energy. SEND NO MONEY—To introduce, we offer to those who act at once, regular \$5.00 size for only \$2.00. Send name today and pay \$2.00 plus 17c postage on delivery. Or send only \$2.00 with order and save postage.
FREE—Full description of Ground Hog and amazing new postage.
low priced battery offer on request today.
Yale Specialty Supply Co.
128 W. 24th St., Kansas City, Mo.

Bradlexstat
PERFECT FILAMENT CONTROL
Provides complete noiseless filament control for all radio tubes without change of connections. Metal parts are nickel plated. One hole mounting. Self contained switch opens battery circuit when desired.
Allen-Bradley Co.
Electric Controlling Apparatus
290 Greenfield Avenue Milwaukee, Wis.

A & B Battery \$2 Charger ONLY
SATISFACTION GUARANTEED
Charges any type of storage A or B battery, using a few cents worth of ordinary house current, either alternating or direct. Cannot injure battery. Complete directions enclosed. Any one can operate. No expensive "extras" to buy.
Why pay \$10.00 to \$15.00 for a charger when you can get this splendid GUARANTEED R.B. Charger by mailing us two dollars (bills, money-order, check or stamps) plus ten cents in stamps or coin to pay mailing costs. Charger will be sent postpaid. If not satisfied return within five days and we will refund your money. Order at once—TODAY.
R. B. SPECIALTY COMPANY
Dept. Y-11 308 East Third Street CINCINNATI, OHIO

TECHNICAL men were quick to appreciate Sangamo condensers in intermediate capacities. One engineer, well known to readers of radio publications—Austin C. Lescarboursa—sends us the following characteristic comment, which is published with his consent:

"In my laboratory we develop new circuits and variations of old circuits, publishing the results in radio magazines. Needless to say, we are using and specifying Sangamo condensers throughout. In my opinion there is no other fixed condenser that can compare with the Sangamo in accuracy, permanent capacity value, neatness and handiness.

"The Sangamo condenser weighs out just the right capacity as the apothecary weighs out a precious drug."

SANGAMO Mica Condensers

are made in 34 sizes, ranging from 0.00004 mfd. to 0.012 mfd. Sangamo Wound Condensers are ready in capacities from 1/10 mfd. to 4 mfd.; Series A guaranteed for continuous operation at 250 volts AC, 400 volts DC; Series B guaranteed at 500 volts AC, 1000 volts DC; also 12 and 14 mfd. blocks.

Sangamo Electric Company
Springfield, Illinois
RADIO DIVISION,
50 Church Street, New York
SALES OFFICES—PRINCIPAL CITIES

CLASSIFIED ADVERTISEMENTS

DOGS

Beautiful registered bull pups, \$15. Bull-dogs, 501 Rockwood, Dallas, Texas.

PATENT ATTORNEYS

PATENT ATTORNEYS
PATENTS, Booklet for Rightholders, references, Best results.—WATSON E. COLEMAN, Patent Lawyer, 73 Ninth St., N. W., Washington, D. C.

RADIO

NEW RADIO WITHOUT BATTERIES.
Why waste several hundred dollars when you can get all the radio you want on a Lambert costing only \$2.95 postpaid. Big stations 600 miles away. No tubes or batteries. 250,000 homes already have them. Order direct from this adv. Crystal Radio Company, Wichita, Kan.

"SOCK-ANTENNA" AERIAL WIZARD
Inductively aerial works from light socket, solves aerial problem, separation of stations, reduces static and interference to minimum, increases volume, adds clarity, equals outside aerial. Gold, satisfaction guaranteed, price \$5.00. Write for bulletin "T-R-S SOCK-ANTENNA." Tidmarsh's Radio Supply, Elwood, Indiana.

Headphones and Loud speakers repaired. Sam T. Sherrill, Smithville, Texas.

FOR SALE—Six-tube Het-Duo-Gen receiver without cabinet for \$28.75. Total cost over \$75. Henry Martin, 3136 Christiana Ave., Chicago.

Prove your reception by the most practical and convenient method: Proof of Reception Cards. Contains spaces for complete reception record, dial settings and signature of announcer. Handy size, 3x5 inches. Send 25 cents for sample package. Radio, 2617 Hollywood Ave., Chicago.

SALESMEN WANTED

Make \$100 Weekly in spare time. Sell what the public wants—long distance radio receiving sets. Two sales weekly pays \$100 profit. No big investment, no canvassing. Sharpe of Colorado made \$855 in one month. Representatives wanted at once. This plan is sweeping the country—write today before your county is gone. Ozarka, Inc., 431 N. LaSalle Av., C. Chicago.

SALESMEN—51 Stations in 15 minutes. Vertical Antenna makes any radio tune 100% sharper—like Super-heterodyne. \$9.00 profit each. 4412 Lisbon Ave., Milwaukee, Wis.

WANTED

Back copy of Radio Digest, Volume 1, Number 1, 1932. Wanted to complete in Library of Congress at Washington. Will give selection of six photogravures for this copy. Editor, Radio Digest, 510 North Dearborn St., Chicago

CROSLEY

BETTER COSTS LESS

RADIO

CROSLEY RADIO INSTRUMENTS
Each item the almost in radio at its price. All prices slightly higher west of the Rocky Mountains. Prices without accessories.



THE "PUP" \$9.75
This little double-circuit one-tube set has brought happiness to thousands and made records for long distance receiving.



THE "4-29" \$29
A 4-tube receiver of amazing efficiency. Crescendonequipped! Everywhere considered marvelous at its price.



THE "PORTABLE" \$39.00
The 4-29 in portable form, handy, compact, efficient.



THE "5-35" \$35
A five-tube tuned radio frequency set, with two stages of non-oscillating radio frequency amplification, Crescendonequipped, controlled, two stages of audio frequency amplification.



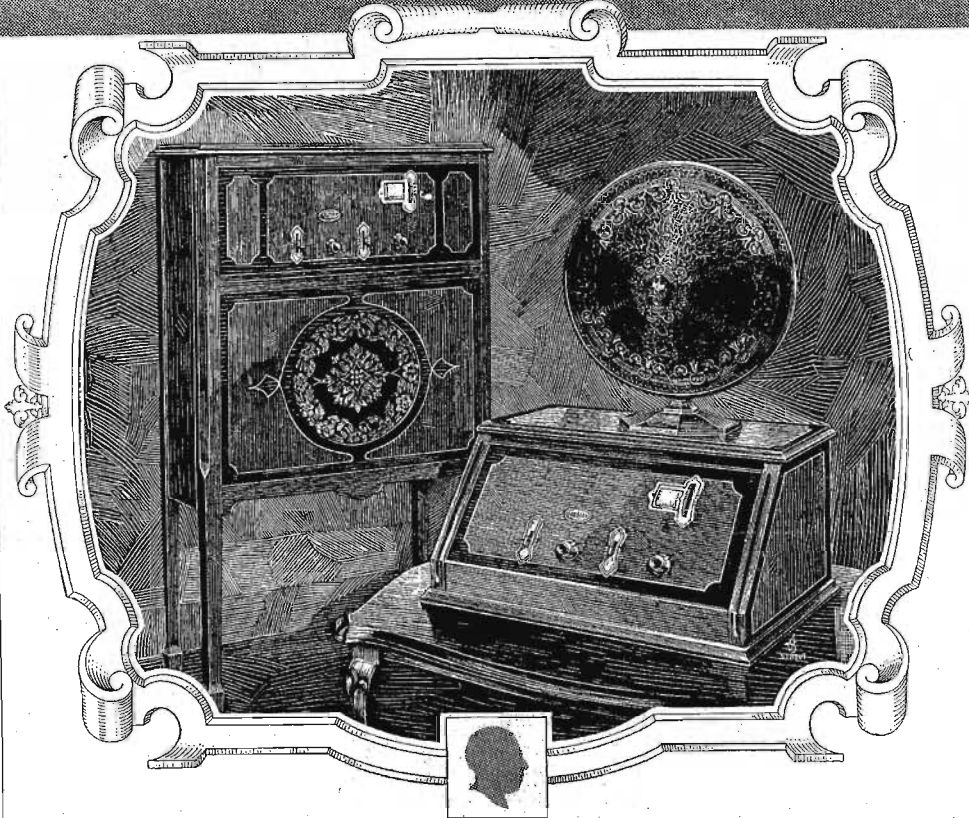
"RFL-75" \$65
5-tubes. True cascade amplification, non-oscillating, non-radiating even under any mis-handling. Its perfect balancing achieved by Wheatstone bridges in each stage of amplification. Exceptional selectivity and tone.



THE "MUSICONSOLE" \$32.00
Embodies the Musicone in a beautiful console of two-tone mahogany finish and provides room for batteries and accessories; 24 1/2 inches long inside.

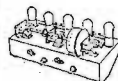


5-TUBE "RFL-90" CONSOLE \$90
Introducing the double drum station selector includes Musicone in exquisite console. Room for batteries and all accessories; 40 inches high by 20 1/2 inches wide.



CROSLEY 1927 FEATURES

Many exclusive—others found only in highest priced radios.



ALL-METAL SHIELDED CHASSIS

This truly great radio achievement, found in several Crosley sets, furnishes a substantial frame for mounting elements, produces excellent alignment of condensers, shields with units from each other. Prevents interference, improves the stability of the circuit, increases selectivity and saves costs by standardizing this phase of manufacture.



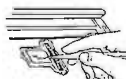
"THE ACUMINATORS"

Crosley Acuminators permit tuning in—loud and clear—weak stations passed over and entirely missed by ordinary single dial radios. In tuning high powered and local stations they are not used. They are an exclusive Crosley feature.



THE "CRESCENDON"

When, on ordinary radios ears must strain to catch a station miles away, a turn of the Crescendonequipped Crosley radios instantly arrests reception to room-filling volume. An exclusive Crosley feature.



THE SINGLE-DIAL STATION SELECTOR

Nothing in radio equals the joy of the convenience of single dial control. Crosley's single drum control enables you to find the stations sought without log book or "tuning."



POWER TUBES

Power tube adaptability marks the Crosley "5-50," "RFL," "5-75," and "RFL-75" sets. This feature typifies Crosley provision for best radio reception at manufacture.

Amazing single dial control and reproduction

THE 5 tube 5-50 THE SUPER MUSICONE THE 5-75 CONSOLE

Such a success! Enthusiastic owners report amazing performance—a drum dial delivering stations loud, clear, sharp; each an almost imperceptible turn of the drum apart. Write station letters on the drum; return to them at will. This marvelous receiver containing these advanced ideas in radio (some of them exclusive to Crosley), including metal shielding and power tube adaptability indicates Powel Crosley, Jr.'s genius in lowering prices by mass production methods.

Listen to this wonder reproducer of broadcasting! Then you'll understand why it is the biggest selling loud speaker on the market EVERYWHERE, and the most imitated. Its shape, however, is NOT the secret of its wonderful performance. Its delightful tone and the fidelity of its reproduction is achieved solely through the Crosley patented actuating unit. Avoid imitations. There is only one genuine MUSICONE. Smaller model, 12-inch cone, \$12.50.

This set includes ideas for radio reception perfection NOT found in any other radio. Marvelous exclusive Crosley "Crescendonequipped" and "Acuminators" increase volume on distant stations and bring in programs entirely missed by and missed on ordinary one dial control radios. Console is 40 inches high with ample room for batteries and a genuine Crosley Musicone is built in Radio chassis same as in the 5-50 receiver. Beautifully finished two-tone mahogany cabinet, rose gold fittings.

\$50. \$14.75 \$75.

Prices slightly higher west of the Rocky Mountains Write Department 49, for Illustrative Literature

Crosley manufactures radio receiving sets, which are licensed under Armstrong U. S. Patent No. 1,113,149, or under patent applications of Radio Frequency Laboratories, Inc. and other patents issued and pending.

THE CROSLEY RADIO CORPORATION
CINCINNATI, OHIO. POWEL CROSLEY, Jr., President

The Gift for the Entire Family For all time

New and Improved **FRESHMAN MASTERPIECE**

Model 6-F-II illustrated here is

The Most Perfectly Toned Radio Ever Produced

ITS construction, with the large cone speaker filling the entire space immediately below the receiver, is so co-ordinated that it results in a tone unexcelled in any radio set.

The large cone speaker has been designed to exactly match Freshman's new **QUALITY RADIO**. It easily handles the full volume that this powerful set delivers.

And, yet, when the power is reduced, the softest and mellowest tones come forth in a manner never before achieved by any sound-producing device.

OPERATES BY ELECTRICITY

This new **QUALITY** set is so designed to operate from your light socket by installing the new Freshman "ABC" Power Supply.

Genuine RCA Radiotrons are recommended for use with **FRESHMAN MASTERPIECE RECEIVING SETS**.



\$119.50

It is massive—it is beautiful; an article of furniture you will be proud to have in your home. Made of the finest genuine mahogany, with vigorous, finely proportioned lines, it certainly surpasses every expectation—the most perfect radio ever designed.

A storehouse of entertaining treasures for all—from grandmother to the youngest children—opera—dance—music—concerts—sports—sermons—and a thousand and one other desirable features—just take your pick.

Make life more pleasant with this "Masterpiece of Masterpieces."

Our new 48-page booklet, illustrating and describing the entire line of Freshman Masterpiece Receivers and other apparatus, is now ready. Write for it—it's free.

Sold on Convenient Terms

by Authorized Freshman Dealers—who also install and service them.
CHAS. FRESHMAN CO., INC.—FRESHMAN BUILDING—NEW YORK
2626 W. Washington Blvd., Chicago.

The Worlds Greatest Radio