

# RADIO DOINGS

## THE RED BOOK OF RADIO

PROGRAMS AND TIME TABLES OF THE LEADING  
BROADCAST STATIONS ~ LATEST RADIO NEWS



\$2<sup>00</sup> A YEAR

5 CENTS A COPY

NSE

VOL. VI.

APRIL 19-25, 1925

No. 16

# Exclusive

Distributors for

KENNEDY

*The Royalty*  *of Radio*

## in California

This company is now the exclusive distributor for Kennedy Radios in California. A complete line is handled at both San Francisco and Los Angeles. This appointment of exclusiveness is a step in a general merchandising plan adopted by the Colin B. Kennedy Company. Thru this appointment we are in a position to grant exclusive territories to reliable dealers. Many high-class products have been successfully merchandised through this plan. It has proven very profitable to dealers.



# KIERULFF & RAVENSCROFT

RADIO EQUIPMENT

1630-32 So. Los Angeles St.  
Los Angeles




654 Howard St.  
San Francisco

KENNEDY WHOLESALE DISTRIBUTORS

---

---

**RADIO SHOW** → APRIL 20-25  
Daily  
PORTABLE SETS FEATURED 2 PM to 11 PM  
at  
Figueroa  
and Pico  
in the  
buildings  
of  
PAUL G.  
HOFFMAN Co.  
Inc.



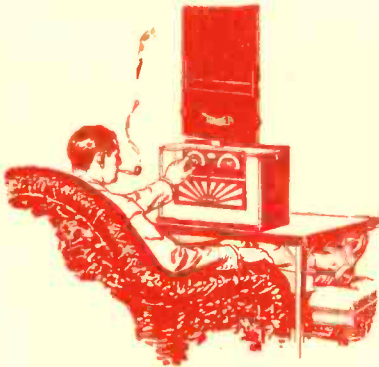
**ADMISSION FREE**

**A complete portable set given away each night**



# OPERADIO

*Combining two features heretofore thought impossible—a self-contained portable set and a beautiful musical instrument*



A beautiful set for the home. Simple to operate. Two-dial control.



A compact, efficient six-tube, completely self-contained, portable Receiver. The Sportsman's companion and entertainer.

*Exclusive Operadio Dealers. Ask for a Demonstration*

## OPERADIO DEALERS OF SOUTHERN CALIFORNIA

Acme Electric Co., Bakersfield  
Acme Electric Co., Pasadena  
Balboa Furniture Co., Balboa  
Black Lumber Co., Thermal  
Boynton, M. S., Hollywood  
Bolton & Jones, Santa Barbara  
Brown, J. A., Puente  
Clines Electric Shop,  
San Luis Obispo  
Chaffee's Electric Shop, Visalia  
Crawford Co., A. A., Beverly Hills  
Davis Electric Shop, Ventura  
El Camino Auto Electric Service,  
Los Angeles  
Fallbrook Hdwe. Co., Fallbrook  
Farrell Electric Co., Oxnard

Ferguson, V. W., Long Beach  
Guadalupe Garage, Guadalupe  
Gerwing, Robert, Santa Ana  
Harrison & Fitch Electric Co.,  
Pomona  
Hollywood Radio Studio,  
Hollywood  
Husted, Clarence, Los Angeles  
Irey & Maitland, El Centro  
Ives, H. R., Hollywood  
Kerman Hdwe. Co., Kerman  
Little, Archie, Brawley  
McIntoch, W. B., Huntington  
Beach  
Maderia Supply Co., Maderia  
Orange Hdwe. Co., Orange

Reinbolt, C. L., Hermosa Beach  
Reedley Hdwe. Co., Reedley  
Rhodes, C. C., Redondo  
Rogers, H. A., San Diego  
Ruth & Ringelman, Parlier  
Sanguinetta, E. F., Yuma, Ariz.  
San Pedro Lumber Co.,  
Westminster  
Smith, S. S., Coalinga  
Taft Heights Grocery, Tatt  
Tewindle, C. W., Costa Mesa  
Warden, J. V., Monrovia  
Wheat Electric Co., Santa Maria  
Wilmington Hdwe. Co., Wilmington  
Wiltshire Radio Co., Los Angeles  
Worthington, R. J., Calexico  
Young Music Co., Venice

*Southern California Distributor*

**Union Hardware & Metal Co.**

**Los Angeles, Cal.**



# Radio Doings

*"The Red Book of Radio"*

H. C. CHARLES, Editor

K. G. ORMISTON, Technical Editor

I. T. PERDUN, Manager

LOS ANGELES  
527-29 Van Nuys Bldg.  
Tucker 8468

OFFICES:

SAN FRANCISCO  
406 New Call Bldg.  
Douglas 1388

Advertising Representative

J. B. SHILLINGFORD

(Entered as second-class matter, November 25, 1922, Los Angeles, California,  
Post Office, under Act of March 3, 1897.)

Copyright, 1925, by Horwood Publishing Co.

Five Cents a Copy

Two Dollars a Year

Vol. VI.

Los Angeles

April 18, 1925

San Francisco

No. 16

## The Call of the Wild

**T**HE call of the wild is no longer exclusively the call of the meadow-lark, the raucous clatter of the scolding blue-jay or the chorused voices of the myriad of feathered and furried folk who inhabit the hills and the sea-beaches.

Radio craftsmanship has claimed a place with the folk of the wild who since the dawn of time have pre-empted the great out-of-doors as their forum.

The town-dweller who, all winter long, has been regaled with the songs and the sayings of the world's great artists and intellects, does not plan to be denied this pleasure through the summer nights during his coming vacation. The portable radio set is here and the progress made in this field of radio during the past season insures the fan a good receiving instrument at a price he is justified in paying for a set that will only be in use part of the year.

The portable set is easy to carry. It can be tossed into an automobile, set up in a tent or cabin, or even on the running board of a machine on long tours across country. The day when men can stray beyond reach of the human voice is past. The solace that comes from the developed social instinct and the call of man to man is always to be had by the mere turning of a knob or the press of button.

The portable set in its own way is as distinct an achievement as the most elaborate and intricate development in radio mechanism now on the market. For a real vacation it is indispensable.

## All the Year for Two Dollars

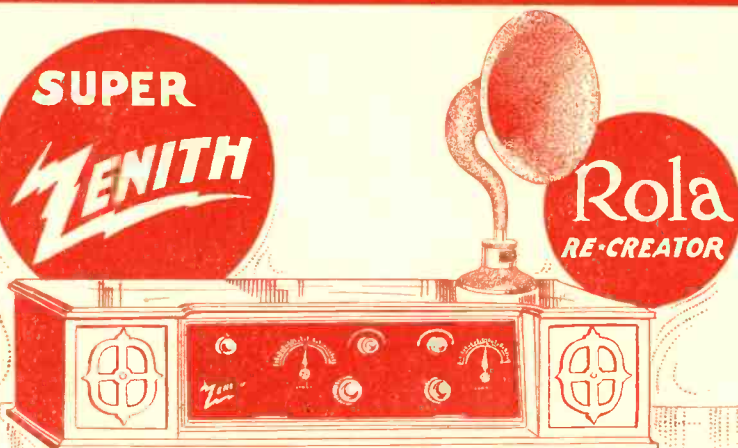
Do not miss copy of RADIO DOINGS. Have it mailed every week to your home. Simply sign the blank below. Mail it to us or pay your dealer and let him forward it to us.

406 New Call Building, San Francisco.  
HORWOOD PUBLISHING CO., 527-529 Van Nuys Building, Los Angeles, California

Enclosed find two dollars for subscription to RADIO DOINGS for one year.

Name \_\_\_\_\_

Address \_\_\_\_\_



## Get the "Two Bests" Together for REAL Radio Enjoyment

MODEL VII,  
ZENITH  
Exclusive of  
Batteries and  
Tubes, \$240  
The ROLA  
RE-CREATOR,  
\$36

Get everything Radio has to offer. Zenith and Rola will give it to you.

Get through the exasperating experimental stage—go direct to the best results obtainable.

Zenith Radio and Rola RE-Creators are the standard by which other radios and speakers are judged.

*See These Dealers in Ventura County*

NEWCOMB RADIO CO., Oxnard  
SMITH MUSIC CO., Santa Paula

*Recommended and Sold Throughout California by*

## LISTENWALTER & GOUGH

LOS ANGELES  
819 E. First St.  
TRinity 9711

SAN FRANCISCO  
940 Mission St.  
Douglas 2940

**"EXCLUSIVE DISTRIBUTORS OF FINE RADIO EQUIPMENT"**

## Fall Radio Conference Probable

Secretary Hoover will probably call another national radio conference this fall, in continuation of his policy to hold conferences annually. The definite plans and date are as yet undecided, but it is believed that invitations will go out calling the sessions in Washington in November, certainly before Congress reassembles.

Results secured at the three past conferences have been so valuable to the Secretary of Commerce that he is disposed to refer all questions involving the different elements of the radio industry and art to a representative assembly of all interests from the manufacturing and commercial concerns to the amateurs and listeners. In other words, lacking specific authority by law to regulate some phases of radio, Hoover is anxious to have a sort of referendum and sound out the situation before he acts. Only through the co-operation promised and given at past conferences, has the Secretary been able to keep peace in radioland.

All interests will be represented and it is probable that among the subjects discussed will be necessary Congressional legislation to bring the old 1913 radio law up to date, so that authority for assigning wave lengths, and power, to stations may be secured. Limiting the number of stations in a certain class will also be brought up, as will international broadcasting and amateur regulations when such stations transmit outside the limits of the country. High-power broadcasting, short-wave emissions, world-wide ship regulation and many other angles of radio development will be considered. The question of separate wave channels for international radio-phone communication, transmission of pictures by radio, and the possibility of extending the broadcast band in the United States are also scheduled for investigation.

It will be beneficial to have the general attitude of the American radio interests known before the meeting of the foreign representatives here next spring at the international radio conference.

### MARWOL BABY GRAND TUNED RADIO 5 TUBE FREQUENCY RECEIVER

\$45.00 List

Come in or write us for attractive proposition.

**SPECIAL:** New shipment of TELEVOCAL (bakelite base) tubes, 199 and 201A, now in stock.

We carry full line of Standard equipment, including The **MADERA** all wood Loud Speaker

**HERBERT H. HORN**

WHOLESALE ONLY

1629 S. Hill St.

Phone WEStmore 1713

Los Angeles

### WELL! What Do You Think Now?

#### RADIOLAS

Super-Heterodyne complete.....	\$267.00
Radiola X complete.....	160.00
UZ 1325 Speaker.....	18.00
Radiotrons (Tubes).....	3.00

### Golden State Electric Co.

826 South Flower

TRinity 4671

# MUNSON RAYNER CORPORATION

WHOLESALE  
DISTRIBUTORS  
TO THE  
RADIO TRADE

**For Anything**

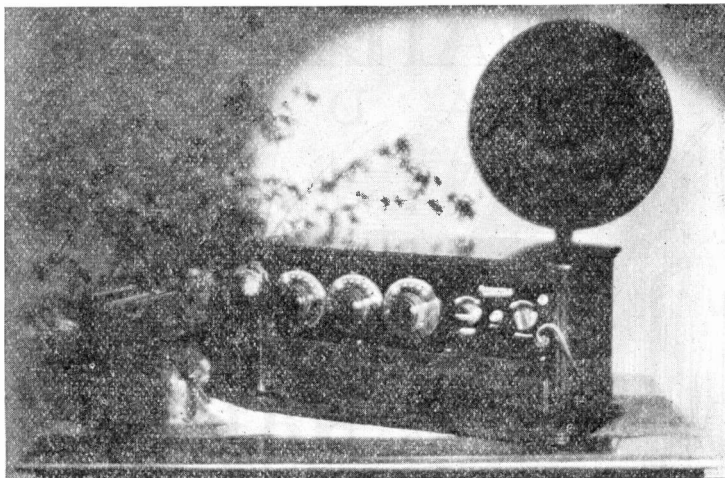
in the way of radio  
supplies or equipment,  
reach for your tele-  
phone and give us a  
ring.

Telephone ME. 6470

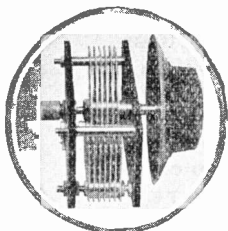
643 So. Olive St. Los Angeles + 86 Third St. San Francisco



## RADIOGRAPH II



### Slip Off the Grey Cloak of Humdrum Affairs . . .



In the inset above is the "heart" of the RADIOGRAPH II, a "straight-line" condenser of new and exclusive design. With this condenser, stations of low and high wave lengths—near and far—can be brought in with ease.

and travel the radio airways of the world . . . turn to the ball room of the Edgewater Beach Hotel, Chicago . . . listen for a moment to the syncopated harmonies of this famous orchestra . . . then . . . swing over 5,000 miles to where Hawaiian guitars waltz the moonlit night of Honolulu—truly there is no finer recreation than this!

The RADIOGRAPH II, the "Wizard of the Air," is built on an entirely new principle which increases range and power. In addition the "straight line" condenser retains the usually lost "overtones," accounting for the extraordinary life-like reception.

You can buy a set for less. But, you cannot get—at any price—more pleasure, greater pride of possession, nor a more beautiful article of furniture for your home.

Your dealer will be glad to show you the 5 Tube Tuned Radio Frequency set, RADIOGRAPH II.

Price (without accessories) \$150.

Dealers will be interested in the merchandising and advertising campaign for the RADIOGRAPH II which will be announced shortly. Get in touch with your distributor.

Northern California Distributors:

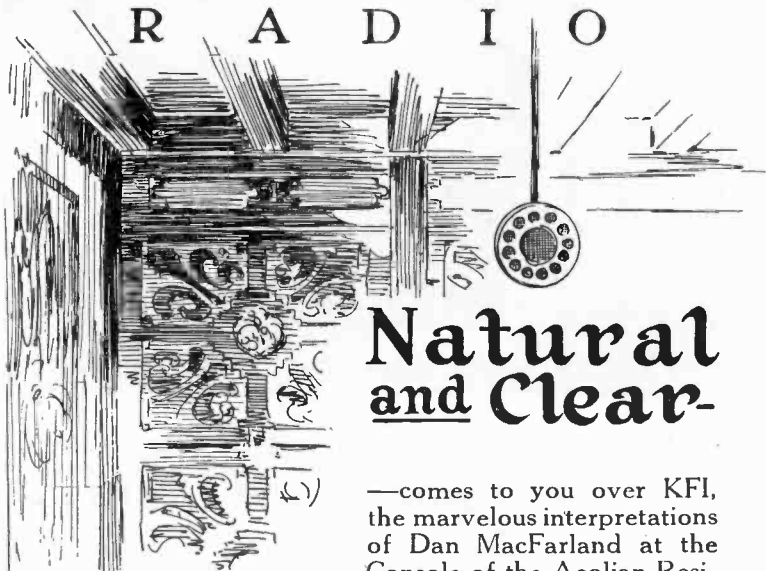
San Francisco: Sloss & Brittain, Frederick H. Thompson Co., Roy B. Jones  
Oakland: Union Electric Supply Co.

Distributed Through the Wholesale Trade Only by the

**ED. JONES AGENCIES**  
NATIONAL DISTRIBUTORS  
640 NATOMA ST. • SAN FRANCISCO, CALIF.

# ATWATER KENT

## R A D I O



### Natural and Clear-

—comes to you over KFI, the marvelous interpretations of Dan MacFarland at the Console of the Aeolian Residence Pipe Organ — if you are the owner of an Atwater Kent.

Listen to the full, mellow resonance or the martial swells of this great organ as your Atwater Kent reproduces them in rich, natural tone quality.

Atwater Kent, Model 20,  
Cabinet Set, \$110. Model L,  
Loud Speaker, \$22.50.

**ELECTRIC EQUIPMENT CO.**  
(Radio Division)  
WHOLESALE DISTRIBUTORS  
1248 So. Hope St. TRINITY 3921

"There is an  
ATWATER KENT  
dealer near you"

PORTABLE RADIO SECTION

Second Annual

Portable  
Radio  
Show

Paul G.  
Hoffman's  
Show Rooms  
Pico and  
Figueroa

APRIL 20  
to 25 incl.

*You've Seen Them  
at the Show*

LET US DEMONSTRATE A  
PORTABLE SET IN YOUR HOME

The CROSLEY Portable

**\$50<sup>00</sup>**

(Complete)

*Open Sundays and Evenings*

**Grand Avenue Radio Co.**

2218½ South Grand Ave., Los Angeles

Phone WE. 1284



## The Dyas Central Radio Shop Features Portable Sets!

It is but natural that the "Central Radio Shop," located in "California's Most Interesting Store," should give particular attention to PORTABLE Radio Sets!

When you're preparing for that Summer Vacation Motor Trip—remember that you can COMPLETELY outfit in the Dyas Shop, which has come to be recognized as "The Leading Sporting and Outing Goods Store in the West"!

**B. H. DYAS CO.**  
 FAber 2020 **7TH AT OLIVE** Radio Shop



## Second Annual Portable Radio Show

Playland is making its annual call to the man with a motor car, and before Angelenos leave their homes and business they will have a chance to see how they can improve their vacations with a portable radio set, when the Radio Jobbers' Association of Los Angeles hold their second annual radio show in a special hall furnished through the courtesy of the Paul G. Hoffman Company, Studebaker distributors, at Figueroa and Pico Streets.

The show will open Monday, April 20, and run for six days, closing Saturday night, April 25. Show hours will be from 2 p. m. to 11 p. m. Working under a



**Nothing but radio music satisfies Prince Iliker, Prize Russian wolf hound, and the portable set of Mabel Julienne Scott does it on location or anywhere.**

special committee of the radio men, decorators have begun work to convert the hall into a carnival of decorations typical of radio. Plans also are being completed for a series of entertainments and features during the show for the benefit of guests.

More than thirty different manufacturers will be represented through the jobbers' exhibitors at the show, according to C. K. Whittaker, manager of the show, and in the immense display will be almost every kind and type of radio set, both in the portable and home styles, that have been developed.

With portable sets being featured because of the pre-vacation period, special attention will be given to this kind of set, and some of the jobbers have made special arrangements with their factories to have the latest creations of their engineers in Los Angeles when the show opens.

# The CHANSON Reproducer

*It Turns Mere SOUND  
Into REAL MUSIC!*

Your present radio set . . . no matter how simple and inexpensive it may be . . . no matter how unsatisfactory it has been in its tone qualities . . . will literally AMAZE you with its clear, full, beautiful tones, when you hear it in combination with the wonderful new Chanson Reproducer.

This remarkable amplifier is a laboratory-built instrument, designed by highly skilled technicians, and is subjected to five of the most severe tests ever given a radio reproducer before it passes our experts.

Hear a demonstration and know what genuine radio enjoyment is!

Distributed by

**WESTERN RADIO, INC.**  
1224 Wall Street, Los Angeles

*The Chanson Reproducer is equipped with 14-inch, unbreakable aluminum Horn. Base and Horn beautifully finished with black crystal lacquer. Complete with cord,*  
**\$30**

*Phonograph Unit (same as furnished with Reproducer)*  
**\$20**



One of the main features of the show will be the giving away each night of a complete portable radio set. In addition a special display has been worked out showing the complete camping equipment a man may carry with him for his vacation, together with a portable radio set.

In the special radio hall, with its 8,000 square feet of space donated through the courtesy of the Hoffman organization, visitors will be able not only to see the latest in radio sets, but to find out from technicians who will be in the booths, anything relative to radio which they may want to know.

The radio hall itself will be devoted exclusively to radio. Jobbers will have their own representatives on hand, and will also have their city dealers come in for certain hours of demonstration while the show is in operation. A crowd of from 30,000 to 40,000 persons is expected to attend during the six days of the show.

Competent guides and demonstrators will be on hand to care for the large crowds expected to attend the affair.

Another feature of the show will be the maintenance of a "problem" department, where it is planned to hold a staff of radio experts on hand to answer questions and explain various problems that come before the radio fan at different times.

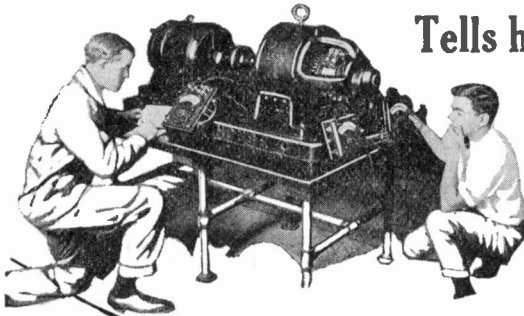
Plans are now being formulated by a committee of radio men who will exhibit to have a program of entertainment every afternoon and evening, which will include music, talks on radio subjects by experts, and the personal appearance of nationally known persons who will participate during the six days that the show runs. There will be no admission charge, says A. G. Farquharson, secretary of the radio jobbers' body.

Following is a partial list of the local jobbers who will be represented at the big exhibit:

Braun Corporation, Electric Equipment, Electric Corporation, Western Radio, Lincoln Radio, Leo J. Meyberg, A. H. Grebe, Yale Radio Corporation, Kieruff & Ravenscroft, Listenwalter & Gough, Sherman-Clay & Co., Cook-Nichols and Fitzgerald Music.

# Free Book on Electricity

## Tells how you can earn \$60 to \$200 week



Unless you know the facts, you have no idea about the wonderful opportunities electricity offers for quick success and big money. Send for this free book on electricity and radio, and learn how you, too, can qualify as an expert electrician and secure a big-pay job through National Training.

### Train at National, Los Angeles

National training gives you real electrical experience. Since 1905 we have trained men to fill better jobs at bigger pay. You actually do the work that you will do "on the job." Thousands and thousands of dollars worth of electrical and radio equipment are here for your practice. Expert instructors make electricity simple and easy under National Training plan.

Mail the Coupon now for the Free Book that gives all facts. See what electricity offers you. Send for this book today!

MAIL COUPON  
National Electrical School,  
Div. B-1, Figueroa and Santa Barbara, Los Angeles, Calif.

Send me your big free book on big-pay opportunities in electricity and radio.

Name.....

Address.....

**National Electrical School**  
Los Angeles, Calif.

# ATWATER KENT R A D I O

## New Model 20 Compact Portable

A receiving set unusually small in size, but powerful in performance.

Combines all the identical selectivity, volume and range of the regular Atwater Kent Model 20— but so convenient is its size you can easily carry it under your arm.

Has two stages of tuned radio frequency amplification, a detector and two stages of audio frequency with three tuning dials, the same as the larger Model 20. Size  $6\frac{1}{2} \times 19\frac{3}{4} \times 5\frac{3}{4}$  inches. Five tubes required.

Price \$110.00

See it at the Radio Show

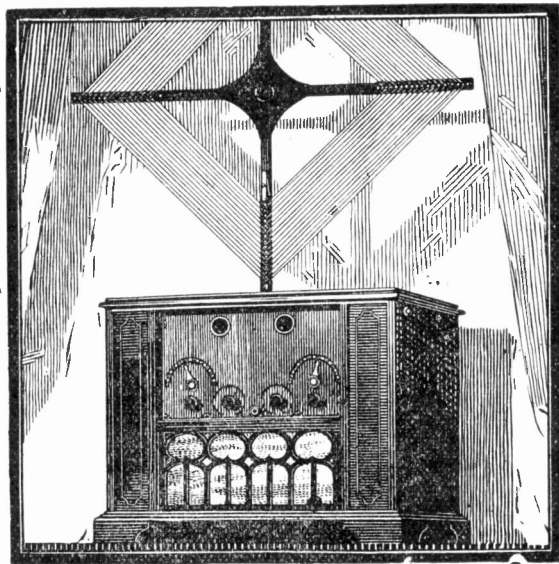
**ELECTRIC EQUIPMENT CO.**  
(Radio Division)  
WHOLESALE DISTRIBUTORS  
1248 So. Hope St. TRinity 3921

"There is an  
ATWATER KENT  
dealer near you"





# DE FOREST RADIOPHONE



## THE ORIGINAL PORTABLE SET

—Completely self-contained, requires no outside aerial or ground.

Here is a set that is portable in every sense of the word. It can be moved easily from place to place and is ready to operate instantly, as it requires no outside aerial or "ground." The batteries are completely enclosed.

Nothing is sacrificed to make this set portable—it is contained in one of the most beautiful cabinets produced. It has unequalled tone with exceptional volume.

Wouldn't you like to have a demonstration in your home? Ask your nearest De Forest dealer—no obligation whatsoever.

Visit our Booth at the Paul Hoffman Portable Radio Show

# FITZGERALD'S

## 727 SOUTH HILL STREET

DISTRIBUTOR

# AT THE SHOW

Paul G. Hoffman Bldg.  
Figueroa at Pico

*Watch Our Booth No. 15*

FOR

## Kodel Portable

AND

THE  
BIG **Whitestone**

---

*Complete Line Of*

**SPEAKERS**

**BATTERIES**

**CHARGERS**

**AERIALS**

And All Set Accessories

---

# Globe Accessories Corporation

WHOLESALE ONLY

307-309 W. Jefferson St.

Los Angeles

Phone HUmbolt 8505

## KHJ, "Uncle John Caravan" to Avalon

When the palatial steamer "Catalina" sailed for Avalon on the morning of April 11th, she carried a very representative portion of Radioland with her, for this was the day of the great KHJ Uncle John Caravan to Catalina.

The Santa Catalina Island Company had invited the best known artists of KHJ, The Times, to be their guests on Easter Sunday and the day before, and they went over in a body under the supervision of Uncle John, "The Voice of KHJ."

Plans were made for the entertainment of these guests, and these plans were such that through the entertainment of the artists the public was also entertained. After luncheon on Saturday, a children's party was held on the lawn of the St. Catherine Hotel in honor of the juvenile artists and to this party were invited all the children on the island.

A new theatre has just been completed at Avalon and in this new theatre was laid the scene of the big entertainment on Saturday evening. The stage was set to represent the interior of a broadcast studio and a four-hour broadcast program was staged. Starting at 7:00 p. m. and lasting until at least 11:00 p. m., the program was divided as follows: From 7:00 to 8:00 there was presented the KHJ Children's Hour, the feature of which was a visit from the "Radio Fairies," Queen Titania and her Sandman. During this period there also appeared the famous kiddies who broadcast from the Times Studio, as well as Floryane Thompson and Louis F. Klien, who is so well known to Radioland as Queen Titania's Court Musician.

Following the Children's Hour an hour of classical music was held, when such artists as Claire Forbes Crane, Calmon Lubovisky, Joseph Heindl, Grace Curry and many others entertained. The next hour was devoted to semi-classical entertainment, Uncle Remus and Uncle Sam Hinds rendering some interesting features.

After the three above programs, at approximately ten o'clock, the studio set was turned over to the "Lost Angels of KHJ" and they presented one of their regular Saturday night entertainments which have become so well known in Radioland. The Imperial Flapper and his followers made this hour one long to be remembered.

When the sun rose above the horizon the following morning, Easter Sunday, it found a picked number of the artists of KHJ assembled on the top of one of the island peaks, while below them was spread out a multitude, waiting to hear the simple yet impressive Sunrise Service. The participants in this beautiful service were Bishop Stevens, the Community Chorus led by the Orpheus Four, Carl Buratti, cornetist, and others. Inasmuch as "a little child shall lead them," the listening crowd heard a few sweet, simple words from those two tiny loved ones of Radioland, Queen Titania and Richard Headrick.

At the conclusion of the Sunrise Services an interesting event transpired. At a selected spot on the island, there was planted a tree, which shall be known as the Tree of Kindness. Next year, on the same occasion will be planted the Tree of Happiness and the succeeding year the Tree of Joy. These three trees to signify the call letters of the Times station, KHJ. At the request of Uncle John, this year's tree, the Tree of Kindness, was planted by the tiny hands of little Queen Titania, KHJ's "Fairy of the Microphone." Surely, planted with the faith of a little child, it will grow big and strong to be pointed to with pride, in the years to come, as a memento of KHJ's first official visit to Avalon.

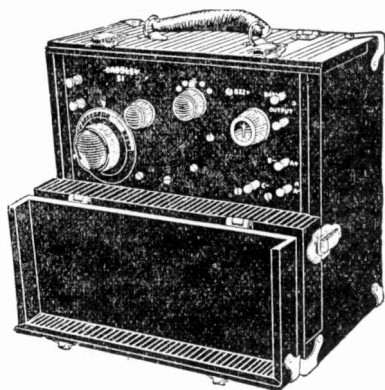
This trip was a splendid opportunity for Radioland to see and meet the many artists they have listened to for so long. The Santa Catalina Island Company ran special boats to accommodate the throngs who grasped the chance to see and meet these radio entertainers.

The management of the theatre where the Saturday evening entertainment was staged, donated the theatre for the evening and it was thrown open to the public, no charge being made for admission. In fact, everything possible was done to make this an occasion long to be remembered by those who journeyed to Avalon on April 11, 1925.

# LISTEN IN!

## WITH US

On  
**THE CROSLY PORTABLE**  
*"Better—Cost Less"*



*A Two-Tube Portable Set that  
 Operates a Loud Speaker*

**PRICE \$50.00 (Complete)**

Inspect This Set at the Radio Show—  
 Then Come In and See Us

**NEW CROSLY SPEAKER IN STOCK**

Buy Your Set on Easy Payments

**COMPLETE SERVICE — REPAIRING**

**OPEN EVENINGS**

# L. A. DUNCAN

*Electricians*

2932-34-36 West Pico St. Phone EMpire 1141 Los Angeles

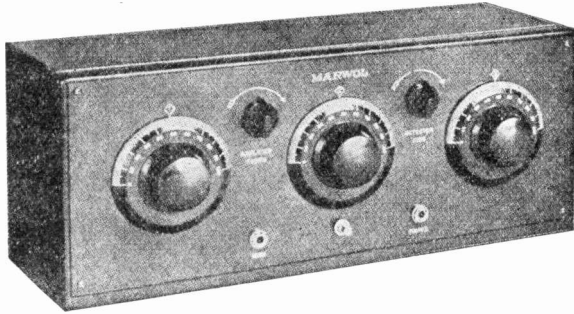
**Burgess A, B and C Bats.**



**SEE THESE SETS AT THE SHOW**

# MARWOL

*5 Tube, Tuned Radio Frequency*



**Price \$60**

*A Popular Priced Receiver That Stays Sold*

The Marwol is the first high grade, five-tube radio frequency receiver to reach the popular price range—a receiver specially built, designed, delivered and guaranteed at a price that practically parallels that of the individual parts required.

The Marwol Receiver is a recent development in the tuned radio frequency circuits, especially designed to eliminate all oscillation over the entire wave length range. A real receiver for DX work.

## MARWOL

BABY GRAND

FIVE TUBE TUNED RADIO FREQUENCY



**Farrand Speakers \$35.00**

The Best Speaker Offered at Any Price

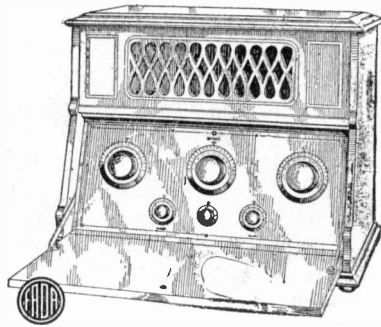
# Lincoln Radio Co.

Los Angeles, Calif.

Wholesale Only  
FABer 0665

1151 Santee St.

# FADA



The Complete Line of

## NEUTRODYNES

Prices from \$75.00 to \$270.00

This beautiful line of sets will be on display from April 20-25 at the Radio Show. Everybody welcome.

**Booth No. 5**

***THE ELECTRIC CORPORATION***

1050 Santee St.

LOS ANGELES

TRinity 5811

## The Portable Set

By K. G. ORMISTON

With the approach of the summer months and the prevalent epidemic of spring fever one's fancy turns to nature—to the seashore, the mountains, the woods and the canyons—in short to a vacation far from the marts of trade and the haunts of man.

Thanks to Mr. Volstead, we of this modern age have revised the lines of Omar thusly: "A book of verse, a portable radio, and thou!" Hence it is in order at this season of the year to consider all that the portable radio set means to the summer vacation.

Radio has become a habit. We now accept it much as we do the morning newspaper, wife's excellent dinner, or the companionable cigar. It entered the home with a most uncertain status. For months we tolerated it as a toy of more or less fascination, but gradually as day after day it faithfully brought its entertainment to us it assumed a position as important as the kitchen stove. This was not fully realized until the first time that it died on our hands, and refused to give forth a solitary chirp. Sadness reigned until the black box of mystery was rejuvenated and again brought to life. From the "setting-up exercises" of the cold gray dawn, to the last wail of the saxophone at midnight, it fills our homes with entertainment, news, lectures, jazz bands, sermons, slap-stick comedy, the thunder of the majestic organ, the chirp of canaries, and the voices of children. Before us pass and endless stream of folk whose ambition is but to please each individual listener and it is all as free as the air we breathe.

Now comes the time when we strap a tent and a tin spoon on the back of the Lizzie and sally forth in search of physical and mental refreshing. Would you for a moment consider leaving all thought of radio behind? Can you picture this vacation without means for tapping the ether wave for a fix-trot or two, a bit of news, the baseball returns, or a frolicsome song? Personally, we can't.

Now the radio that is best suited for our home, is not always the one which we would care to drag about amidst the roughness of the "back to nature" life.

To begin with, it is usually far too heavy, too bulky and too "nice." Hence, the need of a "portable" radio, one that is light, compact, capable of good results without a marvelous antenna system, and one that will stand handling and hard usage. Many sets of these qualifications have been developed to fill this need, made possible by the dry-cell type of tubes. Some employ loop antenna, others require a short wire attached to a convenient tree or other support. Through the relexing principle where a few tubes do the work of many, some manufacturers have combined sensitiveness with compactness to a fine degree. From the simplest of regenerative circuits to the super-heterodyne, sets of portable form have been developed and are on the market for the vast army of vacationists who would not find complete enjoyment without the hope of listening in on the voices of the air.

This year as never before, will see a universal use of portable sets throughout the summer months, and the broadcasters will ever have this particular audience in mind. Isolated, away from the neighborhood movie, or any similar means of entertainment, here we will find an audience of real appreciation.

### IS YOUR REMLER-SUPER SELECTIVE

If locals interfere with those distant stations, bring me your 610 transformer and I will give you

#### MORE SELECTIVITY AND MORE DISTANCE

I have the laboratory equipment to match and peak your transformers and give you better reception.

I can build you a Remler-Super which will bring in Schenectady on a loop, or rebuild yours so it will.

HEMPSTEAD 5459 **BOYDEN** 575 N. Irving Blvd.  
Los Angeles, Calif.

**150**  
**12.22**  
**COSMOPOLITAN**  
**PHUSIFORMER 950**  
*(In the Mahogany Block)*

Beats Them All When Used as a  
**WAVE TRAP FOR ANY CIRCUIT**  
 and  
**ANTENNAE COUPLER**  
 On Any Super-Heterodyne Receiver  
 Positively Guaranteed

**Also**

*Distributors for the following Lines:*

Kant-Blo Signal  
 Fada-Neutrodyne  
 Sets and Parts  
 Erla Kits and Parts  
 Lemco Kits and Parts  
 Kodel—Complete line  
 Workrite  
 Sterling Meters  
 Weston & Jewell  
 Meters  
 Remler Parts  
 Sleeper Corporation

**CONDENSORS**

General Instrument  
 Remler  
 New York  
 Marco

Duplex  
 Signal  
 Chelton  
 Rathburn  
 Acme

**HORNS AND UNITS**

Warren, Jr.  
 Dictagraph  
 Morrison  
 Western Electric  
 Brandes

**TRANSFORMERS**

Amertran  
 Duratran  
 Erla  
 Thordarson  
 All American

Hedgehog  
 Coto-Coil  
 Kellogg  
 Ballentine

**CHARGERS**

Tungar  
 Sterling  
 Crescent  
 Home Charger  
 Handy  
 Simplex  
 Precision Coils  
 Spintite Wrenches  
 Accuratune Dials  
 Roberts Coils  
 Willard Batteries, etc.

*If you can't get it elsewhere, try us*

**Radio Supply Co.**

920 So. Broadway

VAndike 6063

Los Angeles, Calif.

Open Evenings Till 9 P. M.

## Paris Conference September 1

The International Telegraph Convention scheduled for Paris in May has been definitely postponed until September 1st, according to advices reaching Washington. As it is believed this parley will require at least a month's time, following which delegates will have to return to their own countries to report and for further instructions, the International Radio Conference here will probably not be called until after the first of the year. It is probable that the date will be approximately a year from now; in March or April, 1926.

It is understood that the Government of the United States will be represented at the telegraph conference by officials of the State, War, Navy and Commerce Departments and that probably each of the private American commercial communication systems will also send experts. Cable telegraph and telephone interests are certain to journey to France and in view of the practical certainty of radio being involved along with other types of communications in the discussions, it is very likely that radio service here will also be represented.

Following the usual procedure of such international conferences it is said that each government will draw up a set of suggestions as to the questions to be discussed in Paris, submitting them previously to the central bureau at Berne. The Bureau at Berne will compile the suggestions into a tentative agenda.

The Inter-Departmental Radio Advisory Committee at Washington is working on a revision of the proposed Government radio policy which will soon be submitted to the State Department for approval, following which it will probably serve as an outline of the American program to be discussed at both conferences.

## New Wireless Station at Nicaragua

The new wireless station at Bluefields, Nicaragua, was opened by the Tropical Radio Telegraph Company, on March 9, 1925, according to consular advices to the Department of Commerce. This station is located on a hill back about three-fourths of a mile from the water front and business section. It has two steel towers, 200 feet in height, carrying an 800-foot antenna. The cost of construction, including office, power buildings and residence for employees, exceeded \$60,000.

The Tropical Radio Telegraph Company has stations at Managua, and at Cabo Gracias a Dios, and The Cuyamel Fruit Company operates two small wireless stations, one at Rio Grande bar, and the other at El Gallo. The Bragman Bluff Lumber Company at Puerto Cabezas maintains a private station.

The tariff to Rio Grande bar, El Gallo, Puerto Cabezas, and Cabo Gracias a Dios, distances from Bluefields varying from 100 to 180 miles, is 70 cents a word; to Managua, 10 cents a word; to Panama, 20 cents a word, and to Washington, 54 cents a word.

APRIL ISSUE NOW ON SALE

# RADIO

25c

At News Stands

This is your last chance to get a copy of the APRIL issue of "RADIO," the big Western radio monthly. It costs but 25 cents per copy—yet one issue alone is worth more than ten times the price. That's what many of our 100,000 readers tell us. One copy will convince you. Buy "RADIO" for April from your news dealer today. It's a great issue.

Published by PACIFIC RADIO PUBLISHING CO.  
Pacific Building San Francisco

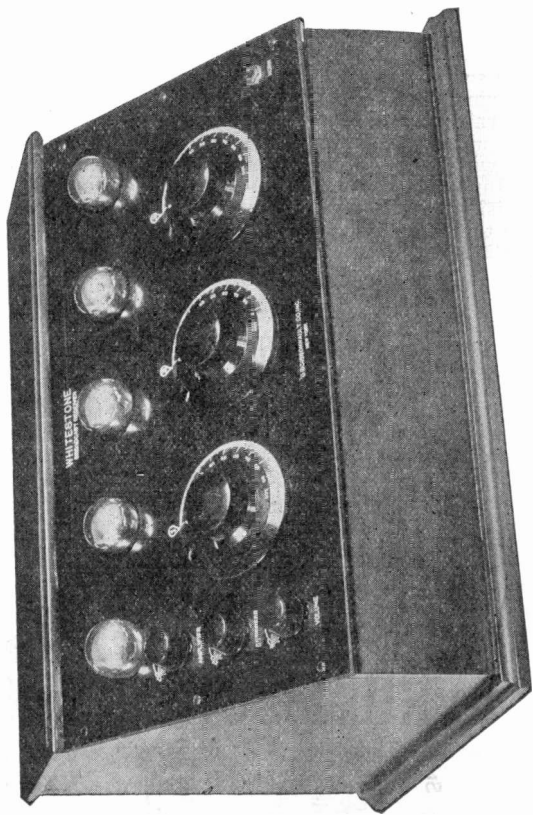
# The Big Whitestone

Tone  
Volume  
Selectivity  
Distance  
Beauty

Price

**\$60<sup>00</sup>**

Without  
Accessories



Manufactured by G. Boissonault Co.

*The Biggest Value ever Offered in a Radio Receiving Set*

*Have demonstration from any of the following dealers:*

**LOS ANGELES**

- Little Radio Shop, 1690 N. Western Ave.
- Lohman Brothers, 232 S. Spring St.
- Sunset Laboratories, 2100 W. Jefferson St.
- Mohawk Battery & Service, 2115 Sunset Blvd.
- Hollywood Radio Store, 661 N. Western Ave.
- Hollywood Electric Shop, 6656 Hollywood Blvd.
- Don Finkle, 2207 W. Jefferson St.
- Square Deal Radio, 5903 Pasadena Ave.
- Holst & Dillin, 2514 W. 54th St.
- Cotter Radio, 1007 W. Manchester Ave.
- King Electric, 221 W. 2nd St.
- Electric Lighting & Supply Co., 216 W. 3rd St.
- L. A. Duncan, 2934 W. Pico St.
- Radio Headquarters, 7430 Moneta Ave.
- D. K. Barris Hardware, 3100 S. Vermont Ave.
- Anderson Radio, 4721 Normandie
- Daw-Wynn Radio Corp., 918 W. Santa Barbara Ave.
- Beckman & Round, 4317 S. Vermont Ave.
- F. and H. Radio, 5034 York Blvd.

- Poole Bros., 59th Place and Figueroa St.
- O. K. Smith, 834 S. Broadway
- Figuroa Music Shop, 749 S. Figueroa St.
- Heath Electric, 1052 N. Western
- Vermont Center Radio Shop, 6214 S. Vermont Ave.
- Butts Music Shop, 902 S. Broadway
- Spicer Battery & Elect. Co., 3520 Brooklyn Ave.
- E. McLarty & Sons Music Co., 7846 Santa Monica Blvd.
- Normandie Radio, 5069 Hollywood Blvd.
- Thayer Electric Co., 2908 Whittier Blvd.
- A. H. Nilsson, 4320 So. Park Ave.
- Jackson-Brennan Co., 1118 W. 8th St.
- Phonograph Repair Shop, 1826 E. First St.
- SAN PEDRO**  
San Pedro Furniture Co., 228 W. 6th St.
- SHERMAN**  
Boulevard Radio, 8945 Santa Monica Blvd.
- PASADENA**  
Radio Bug, 1105 E. Colorado St.  
C. E. Phillips, 2490 E. Colorado  
Lee Radio, 711 N. Lake Ave.
- Southern California Distributors*
- LONG BEACH**  
Radio Distributors, 3320 E. 7th St.
- VENICE**  
Weimer Specialty Co., 1622 Lincoln Blvd.
- GLENDALE**  
Broadway Electric Co., 202 E. Broadway
- SANTA MONICA**  
F. J. Bobsene, 419 Santa Monica Blvd.
- SAWTELLE**  
Sawtelle Electric, 11308 Santa Monica Blvd.
- ALTADENA**  
Altadena Electric Shop, 667 Marioposa St.
- SAN DIEGO**  
Radio Equipment Sales, 402 B St.  
Independent Electric Co., 928 7th
- LANKERSHIM**  
Live Wire Radio
- MONROVIA**  
J. H. Terry, 415 S. Myrtle St.
- SANTA ANA**  
E. M. Hawley, 305 N. Sycamore Ave.
- ANAHEIM**  
R. V. Jensen, 245 E. Center St.

**Globe Accessories Corporation**

**WHOLESALE ONLY**

307-309 W. Jefferson St.

Phone HUmbolt 8505

Los Angeles



# Attention Manufacturers

The  
**Quenshire Symphony Speaker**

*"The Stradivarius of Radio"*



is now furnished in a Console model to manufacturers desiring to place it in their Console Model Radios. The wonderful tone quality of this speaker is known to thousands. There is nothing to compare with it in richness and quality of reproduction.

Equip your sets with the last word in Loud Speakers and watch your results. Your set is no better than its speaker.

A Test Will Tell—You Make the Test.



Call or Write for Further Information

Distributed by

## HOWLAND & DEWEY CO.

Eastman Kodak Co.

510 So. Broadway  
Los Angeles

545 Market St.  
San Francisco

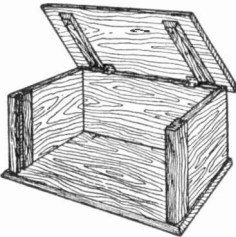
10-12 A. M.  
PACIFIC TIME

# RADIO TIME TABLE

11-1 Mountain Time  
12-2 Central Time  
1-3 Eastern Time

STATION	WATTS	CITY	METERS	CALL	SUN		MON		TUES		WED		THUR		FRI		SAT	
					10.00-10.30	10.30-11.00	10.00-10.30	10.30-11.00	10.00-10.30	10.30-11.00	10.00-10.30	10.30-11.00	10.00-10.30	10.30-11.00	10.00-10.30	10.30-11.00	10.00-10.30	10.30-11.00
L. A. Times	500	Los Angeles	405	K H J	X	X	X	X										
Earl C. Anthony	1500	Los Angeles	468	K F I	X	X	X	X										
Bible Institute	750	Los Angeles	294	K J S	X	X	X	X										
Angelus Temple	500	Los Angeles	277	K F S G	X	X	X	X										
Express	500	Los Angeles	337	K N X	X	X	X	X	X	X	X	X	X	X	X	X	X	X
Pasadena Pres. Ch.	50	Pasadena	229	K P P C	X	X	X	X										
Echophone Radio	100	Long Beach	233	K F O N	X	X	X	X										
Hale Brothers	500	San Francisco	429	K P O	X	X	X	X										
J. Brunton & Sons	5	San Francisco	236	K F U Q			X	X										
General Elec	1000	Oakland	361	K G O	X	X	X	X	X	X	X	X	X	X	X	X	X	X
Warner Bros	250	Oakland	360	K L S	X	X	X	X										
Holy City	100	Holy City, Calif	234	K F Q U	X	X	X	X										
Gen. Elec. Co.	1500	Denver	323	K O A	X	X												
Rhodes Co.	100	Seattle	270	K D Z E			X						X					
First Pres. Church	750	Seattle	272	K T W		X	X											
Meter & Frank	50	Portland	248	K F E C							X	X	X	X				
Oregonian	600	Portland	492	K G W							X	X	X	X				X
Reynolds Radio	250	Denver	283	K L Z				X		X				X				X
News and Journal	500	Dallas	476	W F A A				X		X				X				X
Star-Telegram	1000	Fort Worth	476	W B A P				X		X				X				X
Palmer School	500	Davenport	484	W O C				X		X				X				X
Oregonian	500	Portland	485	K G W				X		X				X				X
Federal Tel. Co.	500	Buffalo	319	W G R				X		X				X				X
Sears-Roebuck	500	Chicago	345	W L S				X		X				X				X
Arlington Hotel	500	Hot Springs, Ark	375	K T H S	X	X	X	X										X

## A-1 Woodworking Company Radio Products



### THE A-1 STANDARD RADIO CABINET

Prices on unfinished cabinets:

Panel Size	Deep	Price	Panel Size	Deep	Price
7x12	8	\$3.00	7x24	10	\$4.50
7x12	10	3.25	7x26	8	4.75
7x14	8	3.25	7x26	10	5.00
7x14	8	3.75	7x27	10	5.25
7x18	8	3.75	7x27	10	5.25
7x18	10	4.00	7x28	10	5.25
7x21	8	4.00	7x28	10	5.50
7x21	10	4.00	7x30	8	6.25
7x24	8	4.25	7x30	10	6.50

Hand Rubbed Finished \$2.00 Extra

A-1 Standard Radio Cabinets are constructed of Philippine mahogany thruout. The ends are grooved to slide panel in. Tops and bottoms moulded all around.

WHENEVER POSSIBLE CABINETS ARE SHIPPED BY EXPRESS  
TERMS ON ALL CABINETS: CASH WITH ORDER  
ALL PRICES NET F. O. B. LOS ANGELES

Cabinets delivered in Los Angeles and vicinity, 50 cents extra  
When Ordering Cabinets Finished, Allow Si Days for Finishing

### A-1 WOODWORKING CO.

Atlantic 7923

1338-1342 San Julian St.

Los Angeles, Cal.

12-2 P. M.  
PACIFIC TIME

# RADIO TIME TABLE

1-3 Mountain Time  
2-4 Central Time  
3-5 Eastern Time

STATION	WATTS	CITY	METERS	CALL	SUN		MON		TUES		WED		THUR		FRI		SAT		
					12 00-12 30	12 30-1 00	1 00-1 30	1 30-2 00	12 00-12 30	12 30-1 00	1 00-1 30	1 30-2 00	12 00-12 30	12 30-1 00	1 00-1 30	1 30-2 00	12 00-12 30	12 30-1 00	1 00-1 30
L. A. Times	800	Los Angeles	405	K H J	X														
Bible Institute	750	Los Angeles	294	K J S	X														
Angelus Temple	800	Los Angeles	277	K F S G															
Express	500	Los Angeles	337	K N X															
Pasadena Pres. Ch.	50	Pasadena	229	K P P C	X														
Warner Bros	250	San Francisco	360	K L S			X	X											
Hale Bros	500	San Francisco	429	K P O			X	X											
General Elec	1000	Oakland	361	K G W			X	X											
Oregonian	500	Portland	492	K G W					X	X									
Rhodes Co.	100	Seattle	270	K D Z E					X	X									
Honolulu Adver.	800	Honolulu	360	K G U				X	X									X	
Reynolds Radio	250	Denver	263	K L Z				X										X	
Gen. Elec. Co.	1800	Denver	323	K O A				X	X									X	
News and Journal	500	Dallas	472	W F A A	X	X													
Star-Telegram	1000	Fort Worth	472	W B A P			X	X											
Palmer School	1800	Davenport	484	W O C			X	X											
Star	500	Kansas City	366	W D A F			X	X											
News	500	Detroit	353	W W J			X	X											
Radio Corp. of Am.	500	New York	455	W J Z			X	X											
Herald	1000	Calgary	430	C F A C			X	X											
Federal Tel. Co.	500	Buffalo	319	W G R	X	X	X	X											
Woodmen of W.	500	Omaha	526	W O A W	X	X	X	X											
Bears-Roebuck	500	Chicago	345	W L S			X	X											
Calumet B. Pdr.	500	Chicago	448	W Q J			X	X											
Arlington Hotel	500	Hot Springs, Ark.	375	K T H S	X	X	X	X											

## The City's Largest

## Exclusive Radio Store

Featuring all models of the most popular lines.

Complete showing of the best standard sets in art model cabinets.

All models of the ATWATER KENT in the Pooley Cabinets.

10 months to pay for any set



# O. K. SMITH CO.

834 South Broadway

Los Angeles

# RADIO TIME TABLE

STATION	WATTS	CITY	METERS	CALL	SUN		MON		TUES		WED		THURS		FRI		SAT		
					2.00-2.30	2.30-3.00	3.00-3.30	3.30-4.00	2.00-2.30	2.30-3.00	3.00-3.30	3.30-4.00	2.00-2.30	2.30-3.00	3.00-3.30	3.30-4.00	2.00-2.30	2.30-3.00	3.00-3.30
L. A. Times	800	Los Angeles	405	K H J															
Angelus Temple	600	Los Angeles	277	K F S G		X	X												
Express	800	Los Angeles	337	K N X				X	X	X	X	X	X	X	X	X	X	X	X
Echophone Radio	100	Long Beach	233	K F O N						X	X	X							
General Elec. Co.	1000	Oakland	361	K G O				X											
Portable Wireless	100	Stockton	360	K W G	X	X													
First Pres. Church	750	Seattle	368	K T W			X	X											
Rhodes Co.	100	Seattle	270	K D Z E					X	X	X								
Leese Bros	20	Everett, Wash.	224	K F B L	X	X							X	X	X				
Oregonian	600	Portland	492	K G W			X					X							
Boise High School	150	Boise, Ida.	275	K F A U				X					X						
Newhouse Hotel	50	Salt Lake City	245	K D Y L			X	X		X	X		X	X					
Reynolds Radio	250	Denver	283	K L Z				X		X		X		X					X
Star-Telegram	1000	Fort Worth	472	W B A P	X	X	X	X											
Palmer School	1500	Davenport	484	W O C					X	X									
Daily News	500	Chicago	448	W M A Q				X	X		X		X	X					
Star	600	Kansas City	366	W D A F	X	X			X	X		X							
Free Press	600	Detroit	517	W C X	X	X			X	X		X	X						
News	600	Detroit	353	W W J	X	X			X	X		X	X						
Radio Cor. of Am.	600	New York	455	W J Z			X	X	X	X		X	X						
Herald	1000	Calgary	430	C F A C				X	X		X		X						
Federal Tel. Co.	500	Buffalo	319	W G R				X	X		X		X						
Westinghouse	1000	Pittsburgh	309	K D K A				X	X		X		X						
Westinghouse	1000	Springfield	331	W B Z			X					X							
Rears-Roebeck	500	Chicago	345	W L S				X			X		X						
Genl. Elec. Co.	1500	Denver	323	K O			X	X		X									

## DEALERS!—"Just a Few of the Best"

PICKWICK RECEIVERS  
RAY-O-VAC BATTERIES  
UTAH AND KELLOGG SPEAKERS  
NEW-TON HEADSETS RADEX AND MAGNATRONS  
BRANT "B" BATTERIES

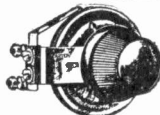
Mail Orders Promptly Attended To

### C. W. SMITH COMPANY

1020 Crocker Street  
Los Angeles, Calif.

WHOLESALE ONLY

Phone  
MEtropolitan 1434



3-6-10-20  
25-30 ohms

## CARTER

## Vernier Control Rheostat

Pat. 7-10-28 \$1.75 Single hole mounting. Vernier control with but one Knob. Smooth, noiseless, positive.

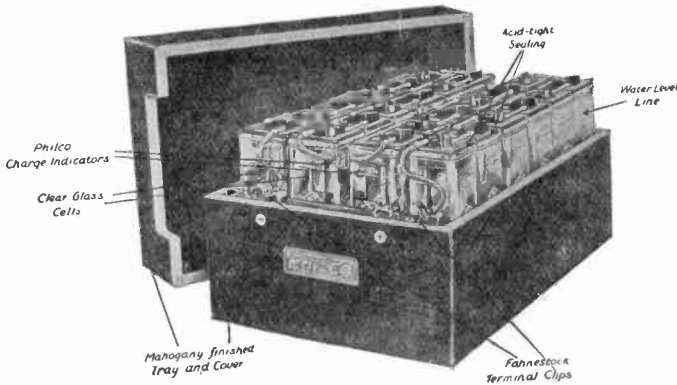
A real instrument.

Carter Radio Co.  
CHICAGO  
SAN FRANCISCO, 204 RIALTO BLDG



# PHILCO

## Fills Every Radio Battery Need



And does it far more economically  
—and Better!

## PHILCO - IZE YOUR RADIO SET

PROVEN ECONOMY—

ADDED PLEASURE

PHILCO "A" Batteries  
\$8.00 and Up

PHILCO "B" Batteries  
\$16.50 and \$20.00

Credit Terms—Easy Payments

*A. J. Tobey Co.*  
INC.  
BATTERY SERVICE

Hope St. at 15th

Los Angeles

AT-lantic 7104

4-6 P. M.  
PACIFIC TIME

# RADIO TIME TABLE

5-7 Mountain Time  
6-8 Central Time  
7-9 Eastern Time

STATION	WATTS	CITY	METERS	CALL	SUN		MON		TUES		WED		THUR		FRI		SAT	
					4.00-4.30	4.30-5.00	4.00-4.30	4.30-5.00	4.00-4.30	4.30-5.00	4.00-4.30	4.30-5.00	4.00-4.30	4.30-5.00	4.00-4.30	4.30-5.00	4.00-4.30	4.30-5.00
E. G. Anthony	1500	Los Angeles	468	KFI	X	X												
Angelus Temple	500	Los Angeles	277	KFSG	X													
Express	500	Los Angeles	337	KNX		X	X											
Echophone Radio	100	Long Beach	233	KFON														
General Electric	1000	Oakland	361	KGO	X			X	X	X	X	X	X	X	X	X	X	X
Hale Bros.	500	San Francisco	429	KPO				X	X	X	X	X	X	X	X	X	X	X
Berkeley Gazette	50	Berkeley	275	KRE														
Portable Wireless	100	Stockton	360	KWG				X	X	X	X	X	X	X	X	X	X	X
Radio Den.	10	Santa Ana	280	KFAW				X	X	X	X	X	X	X	X	X	X	X
Newhouse Hotel	50	Salt Lake	245	KDYL					X		X		X		X			X
Rhoades Dept. St.	500	Seattle	454	KFOA			X	X	X	X	X	X	X	X	X	X	X	X
Star Electric	100	Seattle	263	KFHR		X	X	X	X	X	X	X	X	X	X	X	X	X
First Pres. Church	750	Seattle	454	KTW	X	X												
Northwest Radio	1000	Seattle	385	KJR			X	X	X	X	X	X	X	X	X	X	X	X
Meier & Frank	50	Portland	248	KFEC			X	X	X	X	X	X	X	X	X	X	X	X
Oregonian	500	Portland	492	KGW				X		X		X		X				X
Star-Telegram	1000	Fort Worth	472	WBAP		X	X				X						X	X
News and Journal	500	Dallas	472	WFAA		X	X				X							X
Southern Egr. Exp.	500	San Antonio	395	WOAI				X			X							X
Palmer School	1500	Davenport	484	WOC				X			X							X
Post Dispatch	500	St. Louis	545	KSD				X	X	X	X	X	X	X	X	X	X	X
Gen. Elec. Co.	1500	Denver	323	KOA				X	X	X	X	X	X	X	X	X	X	X
Daily News	500	Chicago	448	WMAQ		X	X	X	X	X	X	X	X	X	X	X	X	X
Free Press	500	Detroit	517	WWJ	X	X	X	X	X	X	X	X	X	X	X	X	X	X
News	500	Detroit	353	WWJ	X	X	X	X	X	X	X	X	X	X	X	X	X	X
Star	500	Kansas City	366	WDAF	X	X	X	X	X	X	X	X	X	X	X	X	X	X
Crosley Mfg. Co.	1500	Cincinnati	423	WLW	X	X	X	X	X	X	X	X	X	X	X	X	X	X
Radio Cor. of Am.	500	New York	465	WJZ	X	X	X	X	X	X	X	X	X	X	X	X	X	X
John Wanamaker	500	Philadelphia	509	WOO				X	X	X	X	X	X	X	X	X	X	X
Federal Tel. Co.	500	Buffalo	318	WGR		X	X	X	X	X	X	X	X	X	X	X	X	X
Westinghouse	1000	Pittsburgh	309	KDKA		X	X	X	X	X	X	X	X	X	X	X	X	X
Westinghouse	1000	Springfield	331	WBZ		X	X	X	X	X	X	X	X	X	X	X	X	X
Westinghouse	1000	Chicago	535	KYW				X	X	X	X	X	X	X	X	X	X	X
Woodmen of W.	500	Omaha	526	WOAW				X	X	X	X	X	X	X	X	X	X	X
Willard Battery	1500	Cleveland	390	WTAM				X	X	X	X	X	X	X	X	X	X	X
Canadian Nat. Ry.	500	Ottawa	438	CKCH				X	X	X	X	X	X	X	X	X	X	X
Sears-Roebuck	500	Chicago	245	WLS		X	X	X	X	X	X	X	X	X	X	X	X	X
Calumet B. Pdr.	500	Chicago	448	WQJ		X	X	X	X	X	X	X	X	X	X	X	X	X
Tribune	1000	Chicago	370	WGN		X	X	X	X	X	X	X	X	X	X	X	X	X
Edg. B. Hotel	1000	Chicago	370	WGBH	X	X	X	X	X	X	X	X	X	X	X	X	X	X
Honolulu Advertiser	500	Honolulu	860	KGU				X	X	X		X	X	X				X

## THIS WEEK'S SPECIAL

5-TUBE LONG DISTANCE MARWOL RECEIVER Completely Installed, Aerial Free  
This is what you get: Marwol Receiver, 5 Cunningham Tubes, 2 45-Volt Burgess "B" Batteries, 11-Plate Prestolite "A" Battery, guaranteed Standard Loud Speaker. Written warranty with each set.

Only \$85.00

EASY PLAN ARRANGED—OPEN EVENINGS UNTIL 9 P. M.

Agents for Radiola, Kennedy, DeForrest, Federal  
Our sets are standard, as well as our service

### FLETCHER RADIO MUSIC CO.

"The House of Perfect Radio Sets"

4713 So. Vermont, Los Angeles

Phone UNIVERSITY 1991

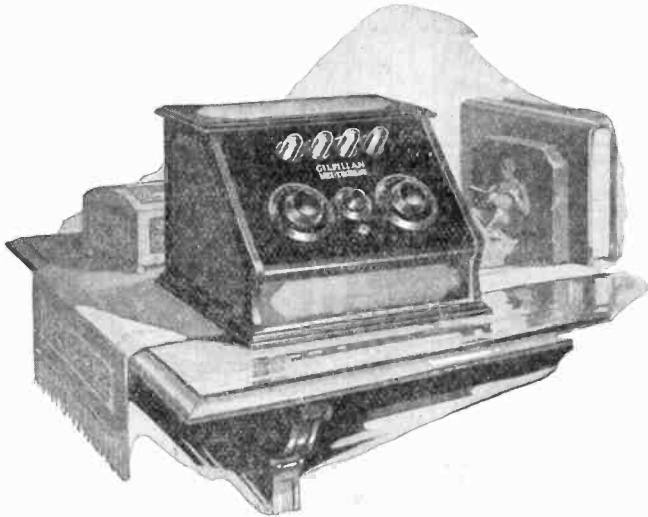


# GILFILLAN NEUTRODYNE

The NEW 4-tube, Dry Cell Set  
Low in Price—Big in Results!

**\$65**

Without Accessories



The Gilfillan Neutrodyne Style GN-3 has a handsome walnut cabinet with space for all batteries. Brings in locals without antenna. Good for years of service.

*Ask Your Dealer*

**GILFILLAN BROS. INC.**

1815 West 16th St., Los Angeles, Calif.

NEW YORK  
KANSAS CITY

OAKLAND, CAL.  
LOS ANGELES, CAL.





6-8 P. M.  
PACIFIC TIME

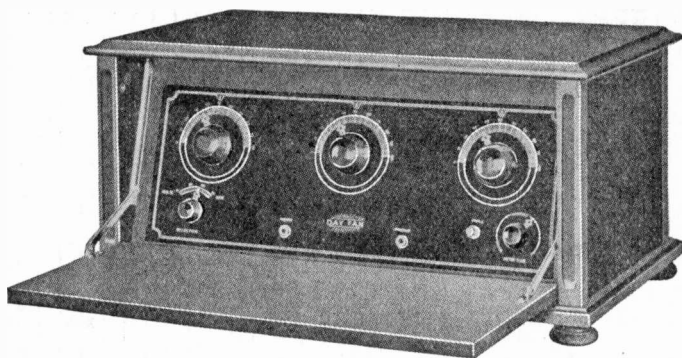
# RADIO TIME TABLE

7-9 Mountain Time  
8-10 Central Time  
9-11 Eastern Time

STATION	WATTS	CITY	METERS	CALL	SUN		MON		TUES		WED		THUR		FRI		SAT	
					6:00-8:30	6:30-7:00	7:00-7:30	7:30-8:00	6:00-8:30	6:30-7:00	7:00-7:30	7:30-8:00	6:00-8:30	6:30-7:00	7:00-7:30	7:30-8:00	6:00-8:30	6:30-7:00
Bible Institute.....	750	Angeles, Los	294	K J S	X	X												
L. A. Times.....	500	Angeles, Los	405	K H J	X	X												
E. C. Anthony.....	1500	Angeles.....	468	K F I	X	X												
Angelus Temple.....	500	Angeles.....	277	K F S G	X	X												
Excess.....	500	Angeles, Los	337	K N X	X	X												
W Hollywood Radio 50		Hollywood, Cal	208	K F V F	X	X												
Echophone Radio.....	100	Long Beach.....	233	K F O N	X	X												
Pasadena Pres. Ch. 50		Pasadena.....	229	K P P C	X	X												
Hale Brothers.....	500	San Francisco.....	429	K P O			X	X	X	X	X	X	X	X				
Berkeley Gazette.....	50	Berkeley.....	259	K R E														
Tribune.....	500	Oakland.....	508	K L X			X	X	X	X	X	X	X	X				
General Electric.....	1000	Oakland.....	361	K G O			X	X	X	X	X	X	X	X				
Western Radio Inst. 50		Oakland, Cal.....	241	K Z M			X	X	X	X	X	X	X	X				
Radio Den.....	10	Santa Ana.....	280	K F A W				X	X		X		X	X				
Nelson Radio Sup. 10		Phoenix.....	238	K F C B		X				X	X		X	X				
McArthur Bros.....	100	Phoenix.....	360	K F A D				X	X		X	X		X	X			
Wash State Col. 800		Pullman.....	349	K F A E					X				X	X				
Love Elect Co.....	10	Tacoma.....	250	K M O			X	X	X	X			X	X				
Mullens Elect Co.....	50	Tacoma.....	250	K G B						X	X		X	X				
Excel Motor Co.....	100	Seattle.....	273	K H Q					X	X			X	X				
Rhoades Dept. St. 500		Seattle.....	454	K F O A			X	X	X	X			X	X				
Star Electric.....	50	Seattle.....	263	K F H R			X	X	X	X			X	X				
Leese Bros.....	20	Everett, Wash.	224	K F B L		X	X	X	X	X			X	X				
Oregonian.....	500	Portland.....	492	K G W	X	X	X	X	X	X			X	X				
Meler & Frank.....	50	Portland.....	249	K F E C			X	X	X	X			X	X				
Boise High School 150		Boise, Ida	275	K F A U				X	X	X			X	X				
Bunkerhill-Sul Co. 10		Kellogg, Ida	233	K F E Y			X	X	X	X			X	X				
Newhouse Hotel.....	50	Salt Lake.....	245	K D Y L			X	X	X	X			X	X				
N M Coll Agricul 750		St Col N M	349	K O B			X	X	X	X			X	X				
Reynold's Radio.....	250	Denver.....	283	K L Z			X	X	X	X			X	X				
Gen. Elect. Co.....	1500	Denver, Colo	323	K O A		X	X	X	X	X			X	X				
Westinghouse El 1000		Hastings, Neb	288	K F K X		X	X	X	X	X			X	X				
News and Journal 500		Dallas.....	472	W F A A			X	X	X	X			X	X				
Star-Telegram.....	1000	Fort Worth	476	W B A P			X	X	X	X			X	X				
Palmer School.....	1500	Davenport.....	484	W O C			X	X	X	X			X	X				
W. O. W.....	500	Omaha.....	526	W O A W			X	X	X	X			X	X				
Daily News.....	500	Chicago.....	448	W M A Q			X	X	X	X			X	X				
Post Dispatch.....	500	St. Louis.....	545	K S D		X	X	X	X	X			X	X				
Westinghouse.....	1000	Chicago.....	535	K Y W			X	X	X	X			X	X				
Sweeney School.....	500	Kansas City.....	366	W H B	X	X	X	X	X	X			X	X				
Star.....	500	Kansas City.....	366	W D A F			X	X	X	X			X	X				
Tribune.....	1000	Chicago.....	370	W G N	X	X	X	X	X	X			X	X				
Crosley Mfg. Co. 1500		Cincinnati.....	423	W L W	X	X	X	X	X	X			X	X				
Albertan Pub. Co. 250		Calgary, Can	410	C H B C			X	X	X	X			X	X				
Detroit Free Press 500		Detroit.....	517	W C X			X	X	X	X			X	X				
Radio Cor. of Am. 500		New York.....	455	W J Z	X	X	X	X	X	X			X	X				
John Wanamaker.....	500	Philadelphia.....	509	W O O			X	X	X	X			X	X				
Federal Tel. Co.....	500	Buffalo.....	319	W G R			X	X	X	X			X	X				
El Buen Tono.....	500	Mexico City.....	440	C Y B			X	X	X	X			X	X				
El Universal.....	500	Mexico City.....	500	C Y L			X	X	X	X			X	X				
Willard Battery.....	1000	Cleveland.....	390	W T A M			X	X	X	X			X	X				
Westinghouse.....	1000	Pittsburgh.....	309	K D K A			X	X	X	X			X	X				
Canadian Nat. Ry.....		Ottawa.....	435	C K C H			X	X	X	X			X	X				
Trinity Meth Ch. 50		El Paso.....	268	W D A H			X	X	X	X			X	X				
Calumet B. Pdr.....	500	Chicago.....	448	W Q J	X	X	X	X	X	X			X	X				
General Elec.....	1500	Schenectady.....	385	W G Y			X	X	X	X			X	X				
Mexican Gov't.....	250	Chihuahua.....	325	C Z F			X	X	X	X			X	X				
Arlington Hotel.....	500	Hot Springs, Ark	375	K T H S		X	X	X	X	X			X	X				
So. Equip. Co.....	500	San Antonio, Tex	306	W O A I			X	X	X	X			X	X				

# Day-Fan

RADIO



*For best results, equip your RADIO with*

CUNNINGHAM tubes  
 \*EXIDE "A" Battery  
 EVEREADY "B" Batteries  
 UTAH loud speaker  
 FROST head set  
 VALLEY Battery charger

\*Of course, for dry "A" batteries you will install RED SEALS

*Distributed by*

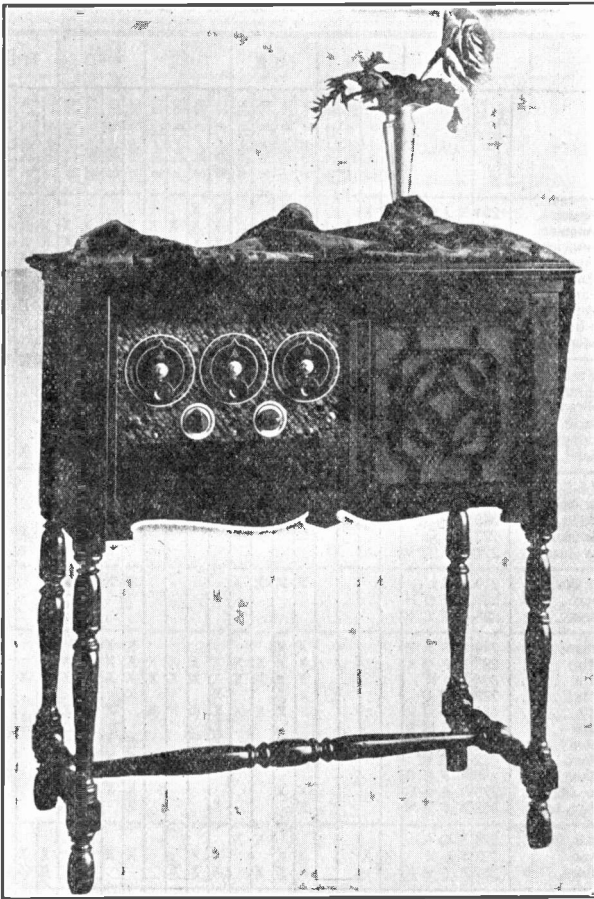
**GRAHAM-REYNOLDS ELECTRIC COMPANY**

**WHOLESALE ELECTRIC & RADIO SUPPLIES**

300 EAST THIRD STREET

LOS ANGELES

WE DON'T CARE



WE DON'T CARE

What location you are in or how much interference you have

THE  
**CLIMAX AIRPHONE**

*"The Receiver with a soul"*

Will operate perfectly in your home—Try before you buy

In handsome CONSOLE equipped with genuine

**OVENSHERE SYMPHONY SPEAKER**

(With Adjustable Dictograph Unit)

◆◆◆◆◆ **\$180.00** ◆◆◆◆◆

**NEVER BEFORE** SUCH A PRICE  
SUCH AN INSTRUMENT

Hear this wonderful new receiver—Any dealer or a card to the factory is sufficient.  
DEALERS—This is a real receiver—Some territory left

**CLIMAX AIRPHONE CO., Culver City, Calif.**

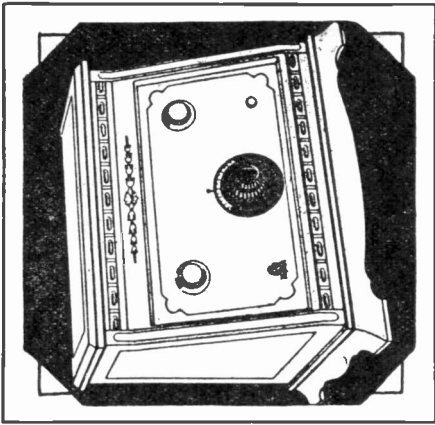
6600 Featherstone Drive

Telephone EMpire 3483



# The Golden-Voiced MOHAWK RADIO

The Five-Tube set with just ONE Dial that produces and excels the finest 5-tube performance you have heard. Not one advantage is sacrificed. Everything possible with any other 5-tube set is now achieved so much **faster, easier and better** that even the briefest demonstration will amaze you. Call at a convenient Mohawk dealer. See and hear the Mohawk now. It will be demonstrated by any of the dealers listed below:



## MOHAWK DEALERS

MOHAWK BATTERY & IGN. CO., 2115 Sunset Blvd., Los Angeles.  
 C. S. YOUNG, 4109½ E. First St., Los Angeles.  
 L. A. DUNCAN, 2934 W. Pico St., Los Angeles.  
 H. D. FLOATEM, 6101 Hollywood Blvd., Los Angeles.  
 HEATH ELECTRIC SHOP, 1052 N. Western Ave., Los Angeles.  
 PARAMOUNT RADIO CO., 5517 Santa Monica Blvd., Los Angeles.  
 TOP NOTCH RADIO CO., 747 S. Main St., Los Angeles.  
 SO. CALIFORNIA RADIO CO., 414 W. 8th St., Los Angeles.  
 REXSCO RADIO SHOP, 939 W. Santa Barbara Ave., Los Angeles.  
 LOHMAN BROTHERS, 232 S. Spring St., Los Angeles.

BULLOCK'S DEPT. STORE, 7th and Broadway, Los Angeles.  
 FRIENDLY SERVICE RADIO CO., 5000 W. Adams, Los Angeles.  
 NORMANDIE RADIO CO., 5069 Hollywood Blvd., Los Angeles.  
 BOLTON & JONES, 718 State St., Santa Barbara, Calif.  
 THE RADIO SHOP, 746 Broadway, San Diego, Calif.  
 CORONA HARDWARE CO., Corona, Calif.  
 TUNE 'EM IN RADIO, 2931 Main St., Ocean Park, Calif.  
 SANTA MONICA RADIO CO., 1325 Santa Monica Blvd., Santa Monica, Calif.  
 W. L. WILLIAMS, 497 W. 2nd St., Pomona, Calif.  
 THEW RADIO COMPANY, 514 4th St., San Bernardino, Calif.

THE ELECTRIC SHOP, El Segundo, Calif.

THE RADIO SHOP, 11 W. State St., Redlands, Calif.

J. H. TERRY, 613 S. Myrtle, Monrovia, Calif.

IMPERIAL VALLEY HARDWARE, El Centro, Calif.

HART & REUSCH, 113 E. 7th St., Corona, Calif.

PRIBYLLS BRUNSWICK SHOP, 502 N. Main St., Santa Ana, Calif.

LEE RADIO SHOP, 711 N. Lake Ave., Pasadena, Calif.

C. E. ZEIGLER, 706 Pine Ave., Long Beach, Calif.

WHITE-SHIMMELL CO., 110 E. 4th St., Long Beach, Calif.

HOWARD & WEBSTER, 860 E. 6th St., Long Beach, Calif.

HAMMELS MUSIC SHOP, 124 W. Center St., Anaheim, Calif.

Visit Our Booth at the Paul G. Hoffman Portable Radio Show at Pico and Figueroa, April 20-25

# COOK-NICHOLS CO.

482 South Fair Oaks Ave.  
Pasadena, Calif.

411 South San Pedro St.  
Los Angeles, Calif.

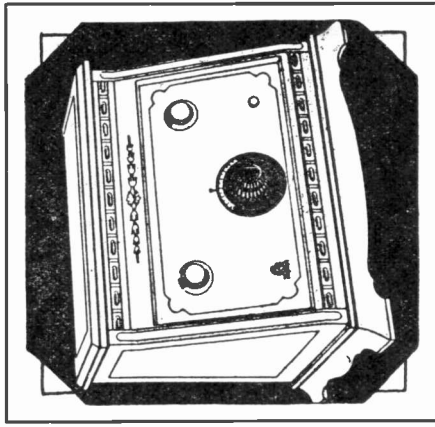
643 Pine Ave.  
Long Beach, Calif.

WHOLESALE ELECTRICAL AND RADIO SUPPLIES



# The Golden-Voiced MOHAWK RADIO

The Five-Tube set with just ONE Dial that produces and excels the finest 5-tube performance you have heard. Not one advantage is sacrificed. Everything possible with any other 5-tube set is now achieved so much **faster, easier** and **better** that even the briefest demonstration will amaze you. Call at a convenient Mohawk dealer. See and hear the Mohawk now. It will be demonstrated by any of the dealers listed below:



MOHAWK BATTERY & IGN. CO., 2115 Sunset Blvd., Los Angeles.  
 C. S. YOUNG, 4109 1/2 E. First St., Los Angeles.  
 L. A. DUNCAN, 2934 W. Pico St., Los Angeles.  
 H. D. FLOATEM, 6101 Hollywood Blvd., Los Angeles.  
 HEATH ELECTRIC SHOP, 1052 N. Western Ave., Los Angeles.  
 PARAMOUNT RADIO CO., 5517 Santa Monica Blvd., Los Angeles.  
 TOP NOTCH RADIO CO., 747 S. Main St., Los Angeles.  
 SO. CALIFORNIA RADIO CO., 414 W. 8th St., Los Angeles.  
 REXSCO RADIO SHOP, 939 W. Santa Barbara Ave., Los Angeles.  
 LOHMAN BROTHERS, 232 S. Spring St., Los Angeles.

## MOHAWK DEALERS

BULLOCK'S DEPT. STORE, 7th and Broadway, Los Angeles.  
 FRIENDLY SERVICE RADIO CO., 5000 W. Adams, Los Angeles.  
 NORMANDIE RADIO CO., 5069 Hollywood Blvd., Los Angeles.  
 BOLTON & JONES, 718 State St., Santa Barbara, Calif.  
 THE RADIO SHOP, 746 Broadway, San Diego, Calif.  
 CORONA HARDWARE CO., Corona, Calif.  
 TUNE 'EM IN RADIO, 2931 Main St., Ocean Park, Calif.  
 SANTA MONICA RADIO CO., 1325 Santa Monica Blvd., Santa Monica, Calif.  
 W. L. WILLIAMS, 497 W. 2nd St., Pomona, Calif.  
 THEW RADIO COMPANY, 514 4th St., San Bernardino, Calif.

THE ELECTRIC SHOP, El Segundo, Calif.

THE RADIO SHOP, 11 W. State St., Redlands, Calif.

J. H. TERRY, 613 S. Myrtle, Monrovia, Calif.

IMPERIAL VALLEY HARDWARE, El Centro, Calif.

HART & REUSCH, 113 E. 7th St., Corona, Calif.

PRIBYLLS BRUNSWICK SHOP, 502 N. Main St., Santa Ana, Calif.

LEE RADIO SHOP, 711 N. Lake Ave., Pasadena, Calif.

C. E. ZEIGLER, 706 Pine Ave., Long Beach, Calif.

WHITE-SHIMMELL CO., 110 E. 4th St., Long Beach, Calif.

HOWARD & WEBSTER, 860 E. 6th St., Long Beach, Calif.

HAMMELS MUSIC SHOP, 124 W. Center St., Anaheim, Calif.

Visit Our Booth at the Paul G. Hoffman Portable Radio Show at Pico and Figueroa, April 20-25

# COOK-NICHOLS CO.

482 South Fair Oaks Ave.  
Pasadena, Calif.

411 South San Pedro St.  
Los Angeles, Calif.

643 Pine Ave.  
Long Beach, Calif.

WHOLESALE ELECTRICAL AND RADIO SUPPLIES





# K F I—Radio Central Super-Station—468.5 Meters Earle C. Anthony, Inc.

1000 South Hope Street, Los Angeles, California  
Class "B" 5000 Watt Western Electric Station Operating in 1500 Watts  
PAUL REESE, Program Manager

**DAILY—**

6:45 to 7:00 p. m.—Radiatorial period.

**DAILY EXCEPT SUNDAY—**

5:00 to 5:30 p. m.—L. A. Evening Herald News Bulletins.

5:30 to 6:00 p. m.—L. A. Examiner Matinee program.

6:00 to 6:15 p. m.—MacDaniels Nightly Doings and Amusement Information Service.

**SUNDAY ONLY—**

6:30 to 6:45 p. m.—MacDaniels Nightly Doings and Amusement Information Service.

DETAILED PROGRAM WEEK OF APRIL 19 TO 25, INCLUSIVE

**SUNDAY, APRIL 19—**

10:00 to 10:45 a. m.—Morning services presented by the L. A. Church Federation. Speaker will be Dr. Campbell Coyle, pastor of the Highland Park Presbyterian Church. Music will be furnished by the choir of the same church.

11:00 to 12:20 p. m.—Services of the Temple Baptist Church, with sermon by Dr. J. Whitcombe Brouger.

4:00 to 5:00 p. m.—Vesper Services under the Federated Church Musicians. A concert of both sacred and secular music.

7:00 to 8:00 p. m.—Program presented by Albert Kaufman from the stage and studio of the Metropolitan Theatre. Featuring: the artists appearing in the prologue and the forty-five piece symphony orchestra playing in the pit of the Metropolitan Theatre.

8:00 to 9:00 p. m.—Classic hour, featuring John Smallman's Oratorio Society, presenting a program of Bach Chorales.

9:00 to 10:00 p. m.—Program presented by the L. A. Examiner.

10:00 to 11:00 p. m.—Bill Hennessy and his Packard Eight Orchestra, presenting the newest in dance music and instrumental combinations.

**MONDAY, APRIL 20—**

7:00 to 8:00 p. m.—Program presented by the L. A. Evening Herald.

8:00 to 9:00 p. m.—Program presented by the Owl Drug Co., featuring another of their unique ideas as to the unusual, in entertainment. The artists appearing are all favorites.

9:00 to 10:00 p. m.—The Walter M. Murphy program in another of their series of classical hours.

10:00 to 11:00 p. m.—Program presented by the L. A. Examiner.

**TUESDAY, APRIL 21—**

7:00 to 8:00 p. m.—The Aeolian organ recital, featuring the Aeolian residence pipe organ with Dan L. MacFarland at the console.

8:00 to 9:00 p. m.—Program presented by the L. A. Examiner.

9:00 to 10:00 p. m.—The Lyric Trio of ladies voices in harmony numbers as well as solos.

Marjorie Teitworth, flutist, will play solos and obligatos.

10:00 to 11:00 p. m.—Packard Ballad Hour, featuring the Ashley Sisters, Ralph Reily, lyric tenor; Polly Grant Hall, Billy Hall and others.

**WEDNESDAY, APRIL 22—**

7:00 to 7:20 p. m.—Nick Harris—Detective stories, proving the folly of committing crime.

7:20 to 7:30 p. m.—Hebrew melody—Jewish cantor.

7:30 to 8:00 p. m.—A special sponsored program by The Goodwin, Klinger, MacKay Insurance Co.

8:00 to 9:00 p. m.—Program presented by the L. A. Herald.

9:00 to 10:00 p. m.—Program presented by the L. A. Examiner.

10:00 to 11:00 p. m.—The regular Wednesday night feature, presenting the Patrick-Marsh Orchestra and Betty Patrick, no bigger than a minute, as soloist.

**THURSDAY, APRIL 23—**

7:00 to 7:30 p. m.—Mu Phi Epsilon Trio. An instrumental ensemble with vocal solos.

7:30 to 8:00 p. m.—Wm. Geddes, Scotch bass-baritone, and assisting artists, in a half hour recital.

8:00 to 9:00 p. m.—Program presented by the Standard Oil Co. of California, featuring talent recruited from within the organization.

9:00 to 10:00 p. m.—Program presented by the Southern California Music Co., broadcast from Chickering Hall, Los Angeles.

10:00 to 11:00 p. m.—Program presented by the L. A. Examiner.

**FRIDAY, APRIL 24—**

7:00 to 8:00 p. m.—Program presented by the L. A. Examiner.

8:00 to 9:00 p. m.—The Aeolian organ recital, featuring the Aeolian residence pipe organ with Dan L. MacFarland at the console.

9:00 to 10:00 p. m.—Program presented by the L. A. Herald.

10:00 to 11:00 p. m.—Recital of the pupils of Myra Belle Vickers.

**SATURDAY, APRIL 25—**

7:00 to 7:45 p. m.—The Lake Arrowhead Orchestra under the direction of Carrol Huxley, in a program of dance music.

7:45 to 8:00 p. m.—The Bookshelf—Miss Nancy (Nancy Rice Anderson).

8:00 to 9:00 p. m.—Program presented by the L. A. Examiner.

9:00 to 10:00 p. m.—Special program presented by Ingrid Arneson Boyd, soprano, and the Pastel Trio—piano, violin, and cello.

10:00 to 11:00 p. m.—Packard Radio Club, featuring Way Watts, the Carlson Sisters, Dorothy, Cleveland and others.

— If KFI programs are to be reprinted, they must not be cut.

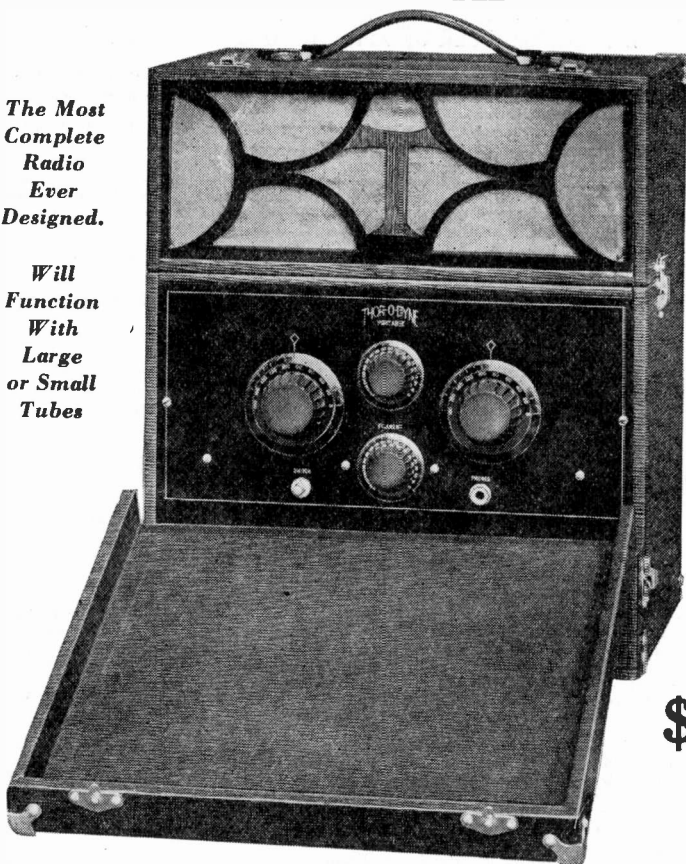
The First Portable Ever Designed to Use a Wet "A" Battery  
**IT'S HERE!**

# The THOR-O-DYNE

PORTABLE

*The Most  
 Complete  
 Radio  
 Ever  
 Designed.*

*Will  
 Function  
 With  
 Large  
 or Small  
 Tubes*



*Loud Speaker  
 and  
 Antenna  
 Built in  
 as Part of  
 Equipment.*

*Built to  
 Accommodate  
 MCRR-4  
 Willard  
 Storage  
 Battery.*

**\$8500**

*Including  
 Everything  
 Except  
 Batteries  
 and Tubes*

**"EVERYTHING UNDER THE LEATHER HANDLE"**

Size  $17\frac{1}{2} \times 14\frac{1}{2} \times 12$ . Weight, with complete equipment, including 45 amp. battery, 47 lbs. Handsomely finished with nickel trimming and locks, gold engraved panel and dials, gold plated panel instrument.

*Wholesale Distributors*

## YALE RADIO ELECTRIC CO.

ELEVEN ELEVEN WALL ST.

LOS ANGELES

Phone WEStmore 1509

# K H J—Los Angeles Times—405.2 Meters

Times Building, First and Broadway, Los Angeles. Owned and Operated by Los Angeles Times  
John S. Daggett, Announcer and Manager

Daily, except Sunday and Monday, from 10 to 11 p. m., we will broadcast Art Hickman's Orchestra from the Biltmore Hotel. Sunday, from 6:30 to 7:30 p. m. and daily except Monday, from 6 to 6:30, we will broadcast Art Hickman's Concert Orchestra from the Biltmore Hotel.

2:30 to 3:30 p. m. daily, except Sunday and Monday, Matinee Musicale.  
7 to 7:15 a. m. daily except Sunday—"Setting-Up Exercises" by Dr. Barclay L. Severns.

WEEK COMMENCING SUNDAY, APRIL 19, 1925

**SUNDAY, APRIL 19—**

- 10:00 a. m.—Sermon from KHJ studio by Rev. Martin Luther Thomas, pastor of the First Presbyterian Church of San Pedro. Mrs. Molly Chuistas, contralto soloist.
- 10:30 to 12:30 noon—Organ recital and entire religious service from the First Methodist Episcopal Church. Arthur Blakeley, organist, and Rev. Elmer E. Helms, pastor.
- 7:00 to 7:30 p. m.—Organ recital from the First Methodist Episcopal Church.
- 7:30 to 8:15 p. m.—Program through the courtesy of the International Bible Students' Association.
- 8:15 to 11:00 p. m.—Program sponsored by Harold L. Arnold Company, Lincoln Motor Car Dealers.

**MONDAY, APRIL 20—**

- 12:30 to 1:30 p. m.—Program presenting Carlyle Stevenson and his Bon Ton Ballroom Orchestra from Ocean Park, Cal. Bobbie Toft, blue singer, and Jack Connors, tenor.
- 8:00 to 10:00 p. m.—Program through the courtesy of the El Encanto Apartments

**TUESDAY, APRIL 21—**

- 12:30 to 1:30 p. m.—Program presenting Major and his Forum Roof Ballroom Orchestra, from the Forum Theater. Cedric Ziezler, tenor.
- 6:30 to 7:30 p. m.—Children's program, presenting Prof. Walter Sylvester Hertzog, in a story of American History. The Weekly visit of the Radio Fairies, Queen Titania and her Sandman, Louis F. Klein, harmonica and auto harp. Floryane Thompson, soprano.
- 8:00 to 10:00 p. m.—Program sponsored by the Pacific Electric Railway.

**WEDNESDAY, APRIL 22—**

- 12:30 to 1:30 p. m.—Program presenting Tommy Tibbetts and his Rendezvous Ballroom Orchestra, Crystal Beach, Santa Monica.
- 1:30 p. m.—Weekly Garden Talk by Fred C. McNabb, of Aggeler and Musser Seed Company.
- 6:30 to 7:30 p. m.—Children's program, presenting Prof. Walter Sylvester Hertzog, in a story of American history. Dick Winslow, screen juvenile reporter. Mickey McBan, screen juvenile. Baby Muriel MacCormack, screen juvenile. Ida Mae Vogt, 9-year-old reader, pupil of Mrs. Leland Moore. Billy Fletcher, boy soprano.
- 7:30 to 8:00 p. m.—Program through the courtesy of University of Southern California.
- 8:00 p. m.—Dr. Mars Baumgardt in his weekly lecture on "Astronomy."
- 8:30 to 10:30 p. m.—Program through the courtesy of Knights' Camp at Big Bear Lake.

**THURSDAY, APRIL 23—**

- 12:30 to 1:30 p. m.—Program of news items and music.
- 6:30 to 7:30 p. m.—Children's program, presenting Prof. Walter Sylvester Hertzog, in a story of American history. Dickie Brandon, screen juvenile. Carroll Brittle, 7-year-old reader.
- 8:00 to 10:00 p. m.—Program through the courtesy of John Wright, the right Tailor.
- 10:00 to 10:30 p. m.—Special program presenting Piggly Wiggly Girls.
- 10:30 to 11:30 p. m.—Art Hickman's Dance Orchestra from the Biltmore Hotel

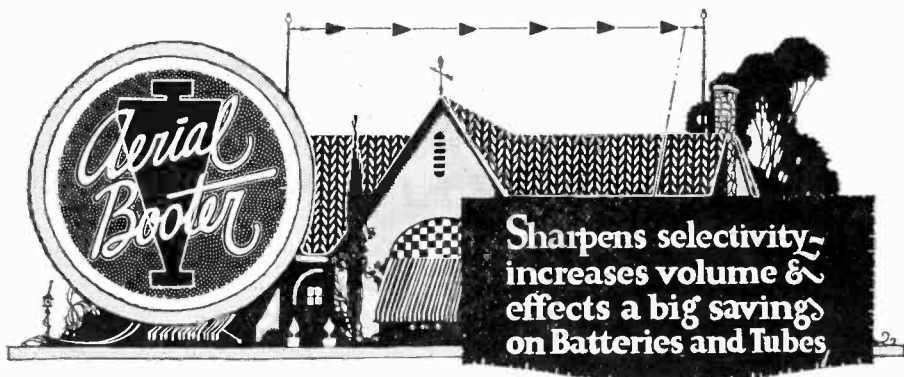
**FRIDAY, APRIL 24—**

- 12:30 to 1:30 p. m.—Program through the courtesy of Coy Barkley and his Palace Ballroom Orchestra.
- 6:30 to 7:30 p. m.—Children's program, presenting Prof. Walter Sylvester Hertzog, in a story of American history. Richard Headrick, screen juvenile. Vyola Von, child actress. Mary Jane Reilly, 3-year-old reader. Louis Klotz, 5-year-old reader. Bobby House, 3-year-old-reader, pupil of Mrs. Leland Moore. Piggly Wiggly Hawaiian Trio. Lenore Killian, contralto.
- 7:30 p. m.—Gladys De Witt, through the courtesy of the Santa Fe Railway, will give the next of her series of talks on "Romance of the Santa Fe Trail."
- 8:00 to 10:00 p. m.—Program through the courtesy of the D. & B. Pump and Supply Company.

**SATURDAY, APRIL 25—**

- 10:00 a. m. to 12:00 noon—Weekly broadcasting class.
- 12:30 to 1:30 p. m.—Program presenting Vera Heifetz-Merenbach, soprano. Eva Seiffert, contralto. Piggly Wiggly Girls.
- 6:30 to 7:30 p. m.—Children's program, presenting Prof. Walter Sylvester Hertzog, in a story of American history. Helene Pirie, screen juvenile, Henrietta Poland, child reader, pupil of Carter Weaver. George Ezra Crane, screen juvenile.
- 7:30 to 8:00 p. m.—Special program through the courtesy of the Y. M. C. A., presenting the Colombia Trio and Tom McGuire, concertina.
- 8:00 to 10:30 p. m.—Program through the courtesy of William E. Bush, Inc., Pierce-Arrow Motor Car and Truck Dealers.
- 10:30 to 11:30 p. m.—Art Hickman's Dance Orchestra from the Biltmore Hotel.
- 11:30 to 2:00 a. m.—Weekly program of the "Lost Angels of KHJ." With Majestic Six Orchestra, KHJ String Quartet and other favorites.

<p><b>Improved Process</b></p>	<h2 style="margin: 0;">3c-ENGRAVING-3c</h2> <p style="margin: 0;">PER LETTER      Discount to Dealers      PER LETTER</p>	<p><i>When You Want It</i></p>
<p><b>WE PICK UP</b></p>	<p><b>PANELS FURNISHED AT TRADE PRICES</b></p>	<p><b>WE DELIVER</b></p>
<p><b>RADI LAB. &amp; MFG. CO.</b></p>		
<p><b>VA. 7247</b></p>	<p><b>LOS ANGELES, CALIF.</b></p>	<p><b>215 Court St.</b></p>



## Your Aerial NEEDS Help

Even if it's brand new and put up exactly according to Hoyle, your aerial needs the help Aerial Booters give it. They catch a far greater amount of radiated energy and "boot" it into your set. You get sharper selectivity, greater volume, and a big saving in batteries and tubes at a cost of only one dollar!

**SPECIAL OFFER** A set of 6 Aerial Booters and 50 feet of enameled non-corrosive aerial wire, with boosters and insulators attached, ready for installation ..... **\$2.50**

Just a dollar bill or money order in a letter brings you a set by return mail. But ask your dealer first!



### DEALERS!

Start with a dozen sets, and in 30 days your order will be 10 times that big! Ask your jobber, or write us!

**VanWart & Foreman**  
*Manufacturers and Distributors of*  
**RADIO EQUIPMENT**  
 & BADDACK PRODUCTS  
 324 No. San Pedro St. Los Angeles

## K F S G—Angelus Temple—Los Angeles 275.1 Meters—1090 Kilocycles

Echo Park, Los Angeles, Calif.

EVANGELIST AIMEE SEMPLE MCPHERSON, Pastor.

Class "A" 500 Watt Western Electric Station. G. N. Nichols, Program Announcer.

### SUNDAY, APRIL 19—

- 10:30 a. m. to 12:30 p. m.—Complete morning service of the Temple radiocast from the pulpit. Sermon by Aimee Semple McPherson. Music by the Choir, Male Quartet and soloists.  
2:30 to 4:30 p. m.—Afternoon auditorium service. Dispensational sermon of the pastor. Music by Choir, Silver Band, Organ and soloists.  
7:00 to 9:45 p. m.—Complete evening service, opening with special hour of music, featuring the Silver Band and Temple Choir under the direction of G. N. Nichols. Followed by the evangelistic sermon of Aimee Semple McPherson, with Altar Call and After Service.  
10:00 to 11:00 p. m.—Organ recital program of Esther Fricke Green, assisted by Ada Lantz, soprano.

### TUESDAY, APRIL 21—

- 10:30 a. m. to 12:00 noon—Sunshine Hour program of music, song, sermon and prayer, conducted by G. N. Nichols.  
3:30 to 4:30 p. m.—Afternoon organ recital program of Esther Fricke Green assisted by Helen Stanhope, soprano; Sarah Karcher, violinist, and Ruth Russell, soprano.  
6:30 to 7:30 p. m.—Angelus Hour program.

### WEDNESDAY, APRIL 22—

- 10:30 a. m. to 12:00 noon—Sunshine Hour personally conducted by Aimee Semple McPherson.  
2:30 to 4:30 p. m.—Auditorium Divine Healing Service. Music by the Ladies' Chorus, Wm. Black in gospel songs, Male Quartet. Sermon by Aimee Semple McPherson, with Altar Call. Esther Fricke Green at the organ.  
6:30 to 7:30 p. m.—Angelus Hour.

### THURSDAY, APRIL 23—

- 10:30 a. m. to 12:00 noon—Radio Bible School, Sunshine Musical program and prayer for the sick and afflicted of Radioland. Personally conducted by Mrs. McPherson.  
2:30 to 4:30 p. m.—Organ recital program of B. Earnest Ballard, assisted by Margaret Kennedy, soprano.  
7:30 to 9:15 p. m.—Auditorium radiocast. Water Baptismal service and evangelistic sermon of Aimee Semple McPherson. Special music.  
9:15 to 10:00 p. m.—Gray Studio program featuring the Temple Choir under the direction of G. N. Nichols.  
10:00 to 11:00 p. m.—Organ recital program of Esther Fricke Green, assisted by Gertrude Koehring, contralto.

### FRIDAY, APRIL 24—

- 10:30 a. m. to 12:00 noon—Radio Bible School, Sunshine Hour and Prayer Service.  
3:30 to 4:30 p. m.—Afternoon organ recital program of B. Earnest Ballard, assisted by Miss Flora Fields.  
7:30 to 9:15 p. m.—Auditorium service and Crusaders Rally. Evangelistic sermon of Mrs. McPherson. Music by the Silver Band and Choir.  
9:15 to 10:00 p. m.—Judge Carlos S. Hardy of the Superior Court introducing Judge Bledsoe to the radio audience, who will give a brief address.  
10:00 to 11 p. m.—Organ recital program.

### SATURDAY, APRIL 25—

- 10:30 a. m. to 12:00 noon—Sunshine Hour of Song, Music, Sermon and Prayer, conducted by Gladwyn Nichols.  
3:30 to 4:30 p. m.—Impromptu Gray Studio program. B. Earnest Ballard, G. N. Nichols, Blanche Clay and others.  
7:30 to 9:30 p. m.—Auditorium service. Testimonies of healing in answer to prayer. Sermon on Divine Healing by Aimee Semple McPherson. Special music.

## BROADCASTING

New 5-Tube Radio Frequency Receiver with Panel Switch, Low Loss Condensers, Gold Filled Dials, Bakelite Sockets.

**\$75.00**

Free with every receiver 6-volt auto battery, 90-volt Eveready B Battery, loud speaker, and five tubes.

**DAVIS RADIO CO.**  
SALES, SERVICE AND EXCHANGE

Tel. HUMBOLT 0212

2722-24 So. Main St.

OPEN EVENINGS AND SUNDAY

# K N X—Los Angeles Evening Express—337 Meters

"The Voice of Hollywood"

Paul G. Hoffman's Studebaker Building, 6116 Hollywood Blvd., Hollywood  
 GUY EARL, Manager CARRIE P. RITTMESTER, Program Manager  
 FORBES W. VAN WHY, Chief Technician "TOWN CRIER," Announcer

PROGRAM FOR WEEK OF APRIL 4-10

## DAILY EXCEPT SUNDAY—

- 7:30 a. m.—KNX Morning Gym, directed by J. C. Casey, Physiotherapist.
- 8:00 a. m.—Inspirational talk and morning prayer.
- 9:00 to 10:00 a. m.—"Hired Hand's" Morning Message, Birthday notices and news.
- 10:30 a. m.—Kate Brew Vaughn, Director Household Economics, Evening Express.
- 11:00 a. m.—News of 25 and 50 years ago and K-N-X temporary program.
- 12:00 m. to 1:00 p. m.—Time signals from Washington, D. C., followed by Wurlitzer organ concert from Wurlitzer Studio (except Monday).
- 2:00 to 4:00 p. m.—K-N-X temporary program.
- 5:00 p. m.—Market reports.
- 5:45 p. m.—Organ recital from Wurlitzer Studio and Sid Ziff "Sport Talk."
- 6:15 to 6:30 p. m.—Educational Travel Talk by Mr. W. F. Alder.

## SATURDAY, APRIL 18—

- 7:00 p. m.—Forbes Van Why Radio Talk.
- 6:30 to 7:30 p. m.—Dinner hour program.
- 7:30 to 8:00 p. m.—Wurlitzer organ recital from Wurlitzer Studios.
- 8:00 to 9:00 p. m.—Smith, Richardson & Gilbert, Subdividers of Wrightwood.
- 9:00 to 10:00 p. m.—Feature program.
- 10:00 to 11:00 p. m.—Hotel Ambassador—Abe Lyman's Coconut Grove Orchestra.
- 11:00 to 2:00 a. m.—Hollywood Nite.

## SUNDAY, APRIL 19—

- 10:00 to 12:00 noon—First Presbyterian Church of Hollywood.
- 5:00 to 6:15 p. m.—Sunset Service, conducted by Rev. Charles F. Asked, D.D. LL.D., and Rev. Frank Dyer, D.D., of Wilshire Congregational Church.
- 7:00 to 8:00 p. m.—First Presbyterian Church of Hollywood.
- 8:00 to 9:00 p. m.—Ambassador Concert Orchestra, Josef Rosenfeld, leader.
- 9:00 to 11:00 p. m.—Courtesy program by R. C. Durant.

## MONDAY, APRIL 20—

- 12:00 to 1:00 p. m.—West Coast Theatres from West Coast Studio.
- 4:00 p. m.—Joe Lyons, tenor.
- 6:30 to 7:30 p. m.—Detmer's Optical Co., courtesy program.
- 8:00 to 9:00 p. m.—Los Angeles Income Property Co., courtesy program.
- 9:00 to 10:00 p. m.—Courtesy program by Stockwell Mfg. Co.
- 10:00 to 11:00 p. m.—Silvertown Orchestra and Lillian May Challenger, soloist. Courtesy of B. F. Goodrich Co., Akron, Ohio.
- 11:00 to 12:00 p. m.—Hotel Ambassador—Abe Lyman's Coconut Grove Orchestra.

## TUESDAY, APRIL 21—

- 9:00 a. m.—State Board of Education.
- 1:00 p. m.—Beverly Hills Nurseries, by Mr. Chenowith.
- 4:00 p. m.—Helen's Household Hints—Dickie Brandon, juvenile entertainer.
- 6:30 to 7:30 p. m.—Courtesy program by Globe Ice Cream Co.
- 7:30 p. m.—Style talk by Myer Siegel, Jr., of Myer Siegel & Co.
- 7:45 p. m.—Talk on health by Dr. Robert T. Williams.
- 8:00 to 9:00 p. m.—Courtesy program by First National and Pacific Southwest Banks.
- 9:00 to 10:00 p. m.—Independent Furniture Manufacturing Co.
- 10:00 to 12:00 p. m.—(Movie Night) Hotel Ambassador—Abe Lyman's Orchestra.

## WEDNESDAY, APRIL 22—

- 1:00 p. m.—Dr. Wayne B. Burr, Care of Children.
- 7:00 to 8:00 p. m.—Ambassador Concert Orchestra, Josef Rosenfeld, leader.
- 8:00 to 9:00 p. m.—Courtesy program by Security Trust & Savings Bank.
- 9:00 to 10:00 p. m.—Clear Lake Beach Co. courtesy program.
- 10:00 to 12:00 p. m.—Hollywoodland Dance Orchestra.

## THURSDAY, APRIL 23—

- 11:00 a. m.—Marvel Ant Gelatine Co., talk on trees and insects.
- 4:00 p. m.—Estelle Lawton Lindsay's Travel Talk.
- 6:30 to 7:30 p. m.—Los Angeles County Assn. of Optometrists courtesy program.
- 7:30 p. m.—Security Business Talk by J. R. Dougless.
- 8:00 to 9:00 p. m.—Feature program.
- 10:00 to 11:00 p. m.—Hotel Ambassador—Abe Lyman's Coconut Grove Orchestra.
- 11:00 to 12:00 p. m.—Campus Night—Students of University of California, Southern Branch.

## FRIDAY, APRIL 24—

- 11:30 a. m.—Estelle Lawton Lindsay's Talk to Women.
- 1:00 p. m.—Mr. A. Peters of Germain Seed Co., talk.
- 4:00 p. m.—Veda Knapp, Music Appreciation.
- 6:15 to 6:30 p. m.—Richfield Oil Co.'s Motorogue.
- 7:30 p. m.—Eastern Outfitting Co., courtesy program.
- 8:00 to 9:00 p. m.—West Coast Theatres from West Coast Studio.
- 9:00 to 10:00 p. m.—Davis Perfection Bread Co., courtesy program.
- 10:00 to 11:00 p. m.—Smith, Richardson & Gilbert, Subdividers of Wrightwood.
- 11:00 to 12:00 p. m.—Hotel Ambassador—Abe Lyman's Coconut Grove Orchestra.
- 12:00 to 2:00 a. m.—Night Hawks—Wurlitzer Studio.





## KFWB—Warner Bros. Motion Picture Studios 252 Meters—1190 Kilocycles

"MOVIELAND"

Warner Bros. West Coast Studio—5842 Sunset Boulevard, Hollywood, California  
 NORMAN MANNING, Manager HARRY SEYMOUR, Entertainment  
 FRANK N. MURPHY, Chief Technician CHARLIE WELLMAN, Announcer and Programs  
 ROI CRONKHITE, Operator MISS BILLY DUNN, Accompanist

PROGRAM FOR WEEK OF APRIL 19 TO APRIL 25 (Inclusive)  
 Subject to Change

### SUNDAY, APRIL 19—

9:00 p. m.—Moving Picture Studio Night.

### MONDAY, APRIL 20—

6:30 to 9:00 p. m.—John A. Evans Corporation program: 1, Brown's Orchestra. 2, Gamut Male Quartet and others.

9:00 to 10:00 p. m.—Cheek Neal Coffee Company's program: 1, Maxwell House Coffee Stringed Quartette, Harry Jackson leading. 2, Humoresque Trio. 3, Charlie Wellman, Bill Hatch and Ray Kellogg.

10:00 to 11:00 p. m.—Warner Bros. program, conducted by Harry Seymour.

11:00 p. m. to 1:00 a. m.—Montmartre Cafe Dance Music.

### TUESDAY, APRIL 21—

7:45 to 9:00 p. m.—1, W. S. Horton, singer.. 2, Titian Trio.. 3, Miller International Trio and others.

9:00 to 10:00 p. m.—Studio Six Orchestra, Joe Martin, conductor.

10:00 to 11:00 p. m.—Warner Bros. program, conducted by Harry Seymour.

11:00 p. m. to 1:00 a. m.—Montmartre Cafe Dance Music.

### WEDNESDAY, APRIL 22—

12:30 to 2:30 p. m.—Matinee Program Montmartre Cafe, Dance Music.

7:45 to 9:00 p. m.—Arrowhead Springs Water Company's program: 1, Arrowhead Springs Orchestra. 2, Myranna Richards, singer. 3, Great Western Quartet, Sallie Bell, popular singer.

9:00 to 10:00 p. m.—Billy Lynn, Bill Hatch, Dot Street, Charlie Wellman, Billie Dunn.

10:00 to 11:00 p. m.—Warner Bros. program, conducted by Harry Seymour.

11:00 p. m. to 1:00 a. m.—Montmartre Cafe Dance Music.

### THURSDAY, APRIL 23—

7:45 to 9:00 p. m.—Varsity Trio. Charles Rumsey, baritone. Brownie's Orchestra.

9:00 to 10:00 p. m.—Elite Radio Company's program. Elite Radio Orchestra.

10:00 to 11:00 p. m.—Warner Bros. program, conducted by Harry Seymour.

11:00 p. m. to 1:00 a. m.—Montmartre Cafe Dance Music.

### FRIDAY, APRIL 24—

7:45 to 9:00 p. m.—Ina Mitchell Butler, singer. Kitty Rogers and Betty Mathews.

9:00 to 10:00 p. m.—Dance Orchestra and popular music.

10:00 to 11:00 p. m.—Warner Bros. program, conducted by Harry Seymour.

11:00 p. m. to 1:00 a. m.—Montmartre Cafe Dance Music.

### SATURDAY, APRIL 25—

12:30 to 2:30 p. m.—Matinee Program Montmartre Cafe, Dance Music.

7:45 to 9:00 p. m.—Seven Rag Pickers. Leonard M. Van Berg. Jeanette Dave, pianist.

9:00 to 10:00 p. m.—Bradley Wright. Margaret Kernan, singer. Cora Thorne Bird. Charles Beauchamp, tenor.

10:00 to 11:00 p. m.—Warner Bros. program, conducted by Harry Seymour.

11:00 p. m. to 1:00 a. m.—Montmartre Cafe Dance Music.

## Evening Herald

Sta. "C", P. O. Box 1240, Los Angeles

Phone METropolitan 5100

Evening Herald Programs Via Radio Central Super-Station KFI

5:00 to 5:30 Daily except Sunday: Table Talks by Alice Irwin, Stock Reports and News Bulletins  
 "Hastings," Program Director and Announcer  
 (Subject to Change)

### MONDAY, APRIL 20—

7:00 to 8:00 p. m.—Evening Herald Radiolians. Roy Bradbury, singer.

### WEDNESDAY, APRIL 22—

8:00 to 9:00 p. m.—Program presented by So. Cal. Radio Assn., Mrs. Charles N. Bell, contralto.

### FRIDAY, APRIL 24—

9:00 to 10:00 p. m.—Kennedy's Broadcasters of Long Beach. Tom Morley, tenor, accompanied by Mrs. Wiggins. A. L. Blodgett, Pres. So. Cal. Radio Assn., talk.

**K J S—Bible Institute Radiophone—293 Meters**

M. E. CARRIER, Mgr.

PROF. J. B. TROWBRIDGE, Director of Programs

SUNDAY, APRIL 19—

10:45 to 12:30 noon—Regular service of the Church of the Open Door, including sermon by Rev.

Robert A. Haddan, D.D. Musical program in charge of Mr. J. B. Trowbridge, assisted by Mr. R. R. Deer, baritone; Mr. Alfred A. Butler, organist; and Chorus Choir of 100 voices.

6:00 to 6:45 p. m.—Radio Vesper Service with sermon by Rev. J. Roy Weakland, Baptist evangelist from the state of New York. Miss Katherine Huyser, soprano soloist; Miss Mary Bishop, organist.

7:15 to 9:30 p. m.—Sermon by Dr. Robert A. Haddan. Musical program under the direction of Mr. J. B. Trowbridge, assisted by Mrs. J. P. Beyne, soprano; Mr. Alfred A. Butler, organist, and Chorus Choir.

TUESDAY, APRIL 21—

8:00 to 9:00 p. m.—Musical program under the direction of Miss Ruth Thomas. Vocal and instrumental numbers. Miss Helen Ward, whistler; Miss Ruth Thomas, pianist; Mr. Elmer Kendrick, violinist; Mr. Franklin Moss, baritone; Quartet of Vermont Ave. Presbyterian Church—Messrs. Francis Abbe, William Prichard, Samuel Prichard, and Frank Boschke.

THURSDAY, APRIL 23—

8:00 to 9:00 p. m.—Exposition of the Whole Bible Sunday School lesson by Miss Winifred Rouzee.

FRIDAY, APRIL 24—

7:00 to 7:45 p. m.—Exposition of the International Sunday School lesson by Rev. John A. Hubbard.

**KPPC, Pasadena Presbyterian Church, 229 Meters**

50 WATT—PASADENA, CALIF.

SUNDAY, APRIL 19—

10:30 a. m.—Tower Chimes and detail of service.

11:00 a. m.—Church service, Rev. Robert Freeman, D.D., pastor, preaching. Soloist, Mr. A. J. Kisselburgh, baritone.

6:30 p. m.—Tower chimes and detail of service.

7:00 p. m.—Music recital.

7:30 p. m.—Church service, Dr. Freeman preaching. Soloist, Mrs. Blanche McTavish Smith, contralto.

WEDNESDAY, APRIL 22—

7:45 p. m.—Midweek service in charge of Dr. Freeman.

N. B.—County C. E. Convention meets in this church Friday, Saturday and Sunday, April 23-26. Which of their meetings will be broadcasted has not yet been announced.

**LISTEN IN!**  
*on Jumping Trout*

At

**Forest Home**

*The Finest Private Stream in the Country*

**SNOW NOW—ROADS PERFECT**

First Class Hotel and Housekeeping Accommodation Open  
85 Miles (3 Hours) from Los Angeles—Elevation 5200 Feet,  
In the Big Timber

**Forest Home**

Tel. Redlands, Suburban 9042

Address G. E. SCHMIDT . . . . . Forest Home, Calif.

# Distantone Five

A FIVE TUBE TUNED RADIO FREQUENCY RECEIVER

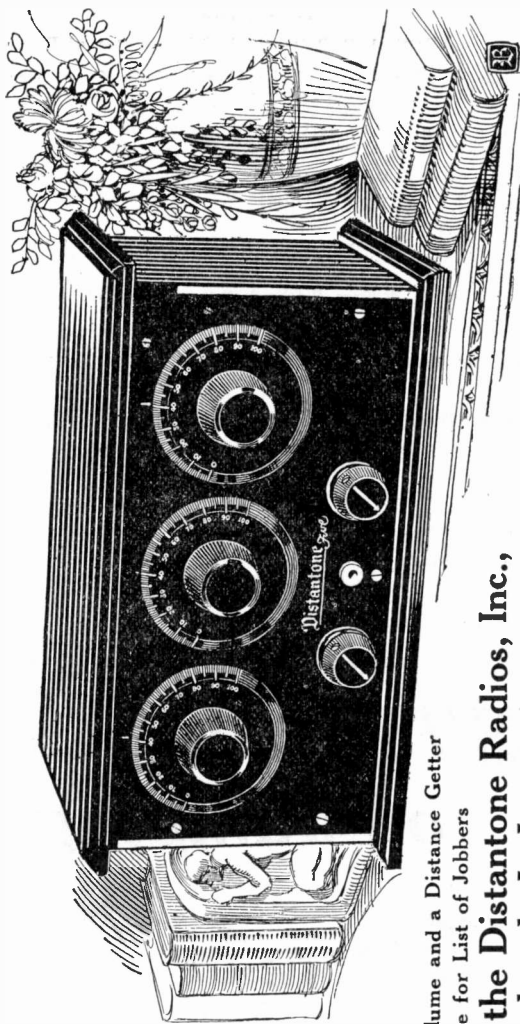
“Radio’s  
Latest  
Sensation”



Within  
the Reach  
of Everyone

## \$39.50

(Without Accessories)



Selectivity, Clarity, Volume and a Distance Getter  
Watch Next Issue for List of Jobbers

Manufactured by the Distantone Radios, Inc.,  
Lynbrook, L. I.

**WALTER G. MICHEL,**

**Exclusive Agent** Phone Broadway 1737  
312 OMAR AVE., LOS ANGELES, CALIF.

## K P O—Hale Bros. Radiophone—428.3 Meters

San Francisco, California—Class "B" Station

CLAIR E. MORRISON, Technical Operator

ADA MORGAN O'BRIEN, Director of Programs

OLIVER W. TUTTLE, Managing-Director, Radio KPO

### DAILY EXCEPT SUNDAY—

- 7:00 a. m.—"Daily Dozen" (health exercises) by Bernard Drury; piano accompaniment by Mel Lyons.
- 10:30 a. m.—"Ye Town Cryer" News Bulletins of the World.
- 10:40 a. m.—"What is playing at the various theatres."
- 11:50 a. m.—Market report on eggs, butter, cheese and poultry under the auspices of California Poultry Producers Association.
- 12:00 noon—Time signals from the Naval Observatory. Reading of the Scripture.
- 1:00 to 2:00 p. m.—Rudy Seiger's Fairmont Hotel Orchestra, by wire telephony.
- 4:30 to 5:30 p. m.—Rudy Seiger's Fairmont Hotel orchestra, by wire telephony.

### SUNDAY, APRIL 19—

- 8:00 a. m.—Presentation of the "funnies" from the San Francisco Chronicle by Mr. "Scotty."
- 11:00 to 12:00 a. m.—Undenominational and non-sectarian church services.
- 6:00 to 7:30 p. m.—States Restaurant Orchestra, under the direction of Waldemar Lind.
- 8:30 to 10:00 p. m.—Rudy Seiger's Fairmont Hotel Orchestra, by wire telephony.

### MONDAY, APRIL 20—

- 5:30 to 6:30 p. m.—Stories, educational subjects and answers to children's questions.
- 5:30 p. m.—Market reports on eggs, butter, cheese and poultry.
- 6:30 p. m.—"What is Playing at the Local Theatres."
- 6:30 to 7:00 p. m.—States Restaurant Orchestra, under the direction of Waldemar Lind.
- 7:00 to 7:30 p. m.—Rudy Seiger's Fairmont Hotel Orchestra, by wire telephony.
- 8:00 to 9:00 p. m.—Organ recital by Theodore J. Irwin, official organist, at the Wurlitzer.
- 9:00 to 10:00 p. m.—Program under the management of Joseph George Jacobson, violin.
- 10:00 to 12:00 p. m.—Johnny Buick's Amphians of Cabiria Cafe, by wire telephony.

### TUESDAY, APRIL 21—

- 10:00 a. m.—Talk on cooking and household management by Mrs. Belle DeGraf of the San Francisco Chronicle.
- 5:30 p. m.—Market reports on eggs, butter, cheese and poultry.
- 5:30 to 6:30 p. m.—Stories, educational subjects and answers to children's questions.
- 6:30 to 7:00 p. m.—States Restaurant Orchestra, under the direction of Waldemar Lind.
- 7:00 to 7:30 p. m.—Rudy Seiger's Fairmont Hotel Orchestra, by wire telephony.
- 8:00 to 10:00 p. m.—Program under the management of Mme. Pearl Ladd, soprano.
- 10:00 to 11:00 p. m.—Johnny Buick's Amphians of Cabiria Cafe, by wire telephony.

### WEDNESDAY, APRIL 22—

- 5:30 to 6:30 p. m.—Stories, educational subjects and answers to children's questions.
- 6:30 to 7:00 p. m.—States Restaurant Orchestra, under the direction of Waldemar Lind.
- 7:00 to 7:30 p. m.—Rudy Seiger's Fairmont Hotel Orchestra, by wire telephony.
- 7:30 to 8:00 p. m.—Conn Band Instrument Co. program. Reg. Code, director.
- 8:00 to 9:00 p. m.—Atwater Kent Artist Program. Instrumental program.
- 9:00 to 10:00 p. m.—Old Songs by Members of the California Club.
- 10:00 to 11:00 p. m.—Johnny Buick's Amphians of Cabiria Cafe, by wire telephony.

### THURSDAY, APRIL 23—

- 5:30 to 6:30 p. m.—Stories, educational subjects and answers to children's questions.
- 6:30 to 7:00 p. m.—States Restaurant Orchestra, under the direction of Waldemar Lind.
- 7:00 to 7:30 p. m.—Rudy Seiger's Fairmont Hotel Orchestra, by wire telephony.
- 8:00 to 9:00 p. m.—Organ recital by Theodore J. Irwin, official organist, at the Wurlitzer.
- 9:00 to 10:00 p. m.—California "Aggie" Glee Club program.
- 10:00 to 11:00 p. m.—Johnny Buick's Amphians of Cabiria Cafe, by wire telephony.

### FRIDAY, APRIL 24—

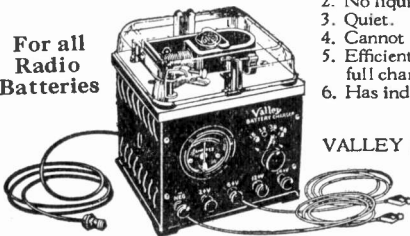
- 12:45 p. m.—Talk from the Commonwealth Club Luncheon at the Palace Hotel.
- 5:30 p. m.—Market reports on eggs, butter, cheese and poultry.
- 8:00 to 10:00 p. m.—Program by Stanford University Band.

### SATURDAY, APRIL 25—

- 5:30 p. m.—Market reports on eggs, butter, cheese and poultry.
- 6:30 p. m.—"What is Playing at the Local Theatres."
- 8:00 to 12:00 p. m.—Art Weidner's Dance Orchestra, playing at the Fairmont Hotel.

## The Charger With 10 Points of Superiority

For all  
Radio  
Batteries



1. No bulbs.
2. No liquids.
3. Quiet.
4. Cannot harm battery.
5. Efficient. Current cost for full charge about 10 cents.
6. Has indicating ammeter.
7. Correct 6-ampere charging rate.
8. Listed as standard by Underwriters' Laboratories.
9. Only two wearing parts.
10. Built in handsome black case with Bakelite panel.

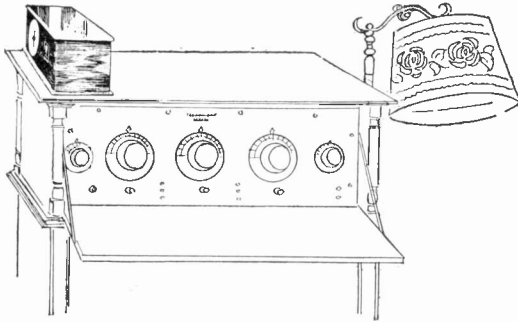
At Radio Dealers

VALLEY ELECTRIC CO., Rialto Bldg., San Francisco, Cal.

# Valley Battery Chargers

# IN BROAD DAYLIGHT

## Seattle Gets Los Angeles



WITH THE AID OF

# The Super-Booster

Robert B. Allen, Secretary-Manager of the West Coast Lumberman's Association, Incorporated, wrote us from Seattle, March 24th, as follows: "Have been using a booster box on which I have had no trouble in getting KFI in broad daylight, which I think is slightly in excess of what you claim for your booster box."

The Super-Booster greatly increases distances and volume, sharpens selectivity and doubles the life of batteries and tubes. It costs but \$12 and is effective with any of the following sets—

All models of Radiolas, including Brunswick Radiolas; Atwater Kent, De Forrest, Freed-Eisemann, Ware Neutrodyne, Gilfillan Neutrodyne, Angelus, Echophone and Mohawk.

Your dealer will demonstrate to your entire satisfaction the outstanding merits of the Super Booster. Beware of imitations. The Super-Booster is the original booster. Look for the name "Super Booster" and the Radio News approval stamp on the box.

Only  
**\$12.00**

In case your dealer cannot supply you, we will mail direct, C. O. D., or on receipt of money order.

**SUPER-BOOSTER DISTRIBUTING CO.**

Successors to Young and Rovig

2528 W. 7th St. Los Angeles Tel. DU. 0878



Approved by  
Radio News  
and KNX Testing  
Laboratories

**K G O—Pacific Broadcasting Station—361 Meters**

GENERAL ELECTRIC COMPANY, OAKLAND, CALIFORNIA  
(Pacific Time)

1:30 p. m.—Daily except Sunday—Stock reports.

1:45 p. m.—Daily except Sunday—Weather reports.

3:00 p. m.—Daily except Saturday and Sunday—Studio program.

4:00 to 5:30 p. m.—Daily except Sunday—St. Francis Hotel, San Francisco, Orchestra.

6:45 to 7:15 p. m.—Daily except Sat. and Sun.—Stock reports, weather reports, news items.

**SUNDAY, APRIL 19—**

11:00 a. m.—Service of St. Luke's Episcopal Church, San Francisco, Rev. W. W. Jennings, Rector.  
3:30 p. m.—Concert by KGO Little Symphony Orchestra, Carl Rhodehamel conducting; assisted by Arthur S. Garbett and guest artists.

8:00 p. m.—Service of St. Luke's Episcopal Church, San Francisco, Rev. W. W. Jennings, Rector.

**MONDAY, APRIL 20—**

8:00 p. m.—Educational program. Poet and Peasant Overture (Von Suppe), Arion Trio. Agricultural course, "Lady Bird Beetles," Prof. E. O. Essig, Division of Entomology, College of Agriculture, University of California. Sweet Little Woman o' Mine (Bartlett), Arion Trio.

10:00 p. m. to 1:00 a. m.—Dance music program by Henry Halstead's Orchestra and soloists, Hotel St. Francis, San Francisco.

**TUESDAY, APRIL 21—**

8:00 p. m.—Studio program. Part One: Program, courtesy Rotary Club, Alameda, California, Earle P. Cochran, director. Flute solos, (a) Meditation, "Thais" (Massenet); (b) Call Me Thine Own (Halevy), Winifred Eva Cameron; harp accompaniment by Mabel M. Cameron.

10:00 p. m. to 1:00 a. m.—Dance music program by Henry Halstead's Orchestra and soloists, Hotel St. Francis, San Francisco.

**WEDNESDAY, APRIL 22—**

Silent Night.

**THURSDAY, APRIL 23—**

8:00 p. m.—Studio program. "Cappy Ricks," a drama in three acts by Edward E. Rose, adapted from the story by Peter B. Kyne; presented by the KGO Players under the direction of Wilda Wilson Church. Music by the Arion Trio.

10:00 p. m. to 1:00 a. m.—Dance music program by Henry Halstead's Orchestra and soloists, Hotel St. Francis, San Francisco.

**FRIDAY, APRIL 24—**

Silent Night.

**SATURDAY, APRIL 25—**

8:00 p. m.—Studio program. Part One: Program by University of California Glee Club; C. R. "Brick" Morse, '96, director. Glee Club—Hail to California (Morse); Of All the Songs (Smith), The Desperado. Piano solos, Juba Dance (Bett); Rigaudon (MacDowell), Frank Dunsmore, '25.

10:00 p. m. to 1:00 a. m.—Dance music program by Henry Halstead's Orchestra and soloists, Hotel St. Francis, San Francisco.

**ATWATER KENT SET**

*"The Nationally Advertised STANDARD RECEIVER"*

**EVER-READY RADIO BATTERIES**

and

**COMPLETE LINE OF RADIO SUPPLIES**

**YOUR CREDIT IS GOOD**

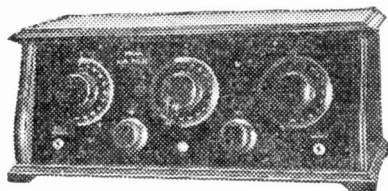
Outside Repair Work Our Specialty  
**OPEN EVENINGS**

Free Home Demonstration

**THE HARVARD RADIO & ELECTRIC**

4816 South Vermont

Phone VERmont 8973



Announcing the  
**AIR PILOT**

5-Tube, perfectly balanced, solid Mahogany Cabinet

**EXTREME SELECTIVITY**

Price \$60.00

**AYLSWORTH & ROBINSON**

Jobbers of Radio  
Los Angeles

ATlantic 1016

117 West 16th St.

# MARWOL

BABY GRAND  
FIVE TUBE TUNED RADIO FREQUENCY

*Three-fold Beauty*



*Marwol 5-Tube  
Tuned Radio  
Frequency  
Model A-1  
\$60.00*

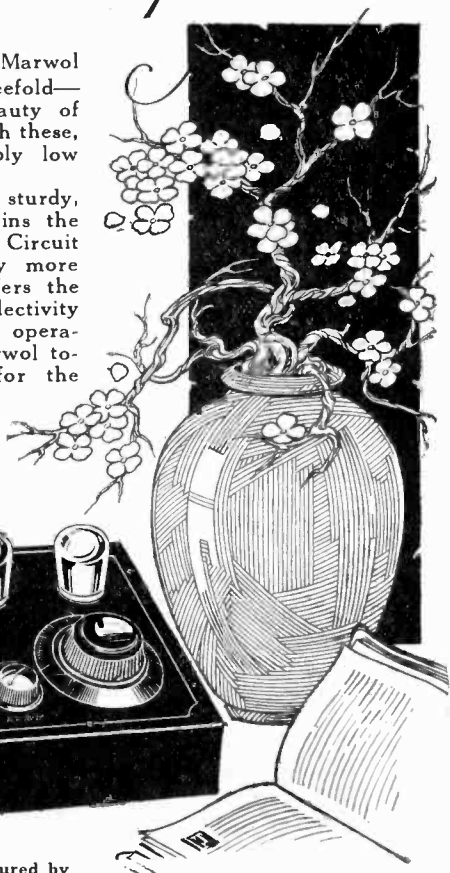
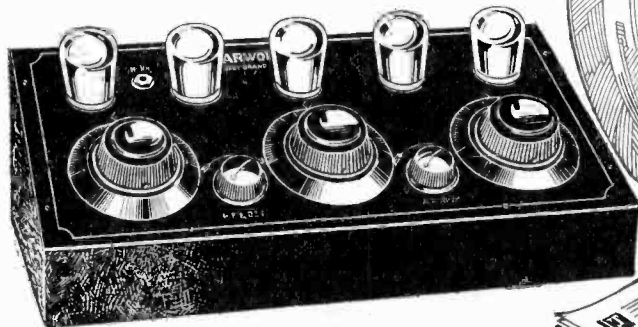
Write for descriptive folder. At your dealer's—otherwise send purchase price and you will be supplied postpaid.

**\$45.00**

THE beauty of the Marwol Baby Grand is threefold—beauty of reception, beauty of appearance . . . and with these, the beauty of remarkably low cost.

Here is a splendid little, sturdy, all-round set that contains the highly successful Marwol Circuit of the Model A-1, only more compactly—therefore offers the same extraordinary selectivity and range, with ease of operation, that makes the Marwol today's best radio buy for the money!

A light, compact receiver easily convertible into an ideal portable set for summer use.



Manufactured by  
**MARWOL RADIO CORP.** 85-J Mercer Street, New York

*Pacific Coast Representatives*

**MARSHANK SALES COMPANY**

926 Insurance Exchange Bldg., Los Angeles

**SAN FRANCISCO**  
202 Rialto Bldg.

**PORTLAND**  
166 Lowndale St.



# K J R—Seattle—1000 Watts—384.4 Meters

"THE BROADCASTING HOME OF THE POST-INTELLIGENCER."

**DAILY EXCEPT SUNDAY—**

- 12:30 to 1:00 p. m.—Market reports.
- 1:00 to 1:30 p. m.—Post-Intelligencer Musical.
- 6:00 to 6:30 p. m.—"What's Doing at the Theatres."

**MONDAY, APRIL 20—**

- 8:30 to 9:00 p. m.—Gordon Kilbourn and his orchestra.
- 9:00 to 10:00 p. m.—Post-Intelligencer Studio program.

**TUESDAY, APRIL 21—**

- 10:30 to 11:30 a. m.—Puget Sound Savings & Loan Association program.
- 1:30 to 2:00 p. m.—Bernice Redington, Home Economics talk.

**WEDNESDAY, APRIL 22—**

- 1:30 to 2:00 p. m.—Musical talk by Raymond David Holmes.
- 8:30 to 9:30 p. m.—Post-Intelligencer Studio concert.
- 9:30 to 10:00 p. m.—Norman Pearce—Illustrated Radio Travelogue.

**THURSDAY, APRIL 23—**

- 1:30 to 2:00 p. m.—Bernice Redington, Home Economics expert of Post-Intelligencer.
- 10:30 to 12:00 p. m.—Regular meeting of the "Keep Joy Radiating Order of The Bats in their Belfry."

**FRIDAY, APRIL 24—**

- 10:30 to 11:30 a. m.—Puget Sound Savings & Loan Association program.
- 1:30 to 2:00 p. m.—Book review by Raymond David Holmes, Post-Intelligencer Librarian.
- 8:30 to 9:30 p. m.—Post-Intelligencer Studio recital.
- 9:30 to 10:00 p. m.—Chamber of Commerce program.

**SATURDAY, APRIL 25—**

- 1:30 to 2:00 p. m.—Sports review by Gus Schorek, Sports Editor of the Post-Intelligencer.

**SUNDAY, APRIL 26—**

- 11:00 a. m.—Church service of the First Methodist Episcopal Church, J. Ralph Magee, pastor.
- 7:00 p. m.—Evening vespers of the First Methodist Episcopal Church.

**Headquarters For**  
**THOMPSON RADIOLA KODEL**

A complete line of standard parts

## LOHMAN BROS.

REWIRING

REPAIRING

232-34 South Spring St.

MAin 2924

LOS ANGELES

## \$100.00 REWARD

For a Circuit Using Not Over Four Tubes  
That Is More Efficient Than the

## ROBERTS

Our 3-Tube Roberts Low Loss Kit Is \$35.00

## DEHOOG BROS.

"ROBERTS" EXPERTS

"We Build 'Em"

6215 Moneta Ave., Los Angeles



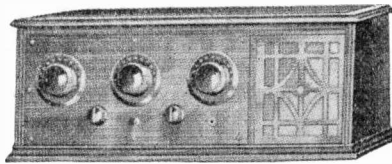
## The Pathe Big Five Supreme

is without doubt one of the greatest values in Radio Sets ever offered to the public. It is the B-5 Set described above, housed in a cabinet beautifully finished in two-tone Mahogany with built-in Loud Speaker. Price includes high class Loud Speaker Unit.

**Retail Price, \$95**

Without Accessories

### B-5 SUPREME



Other Models \$67.50 to \$210.00 Without Accessories

## COOK-NICHOLS CO.

WHOLESALE ONLY

LONG BEACH  
657-129

PASADENA  
Fair Oaks 1578

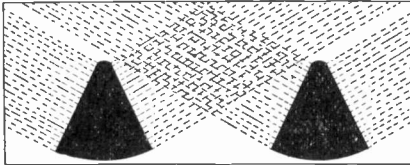
LOS ANGELES, CAL.

Faber 4487

TUcker 6657

# CONE-COILS

(Pat. Application in Process)



The CONE-COILS' greatest efficiency is due to its peculiar field of force as illustrated at left—a field of force that extends at an angle up and above the apparatus of the set, thus permitting the apparatus of the set to function without coupling disturbances which are the direct causes of broad tuning, poor tone quality and no distance!

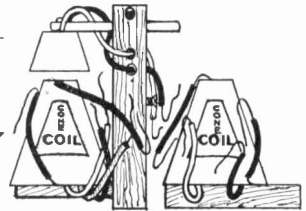
CONE-COILS used in any circuit will give you greater selectivity, greater distance with less grief than any other type of coil! **A trial will prove it!**

DEALERS: Order through your jobber.  
 JOBBERS: Some territory still open. Write or wire.  
 One set of CONE-COILS for the ROBERTS CIRCUIT, with instructions and diagram, price \$6.50.

AT YOUR DEALER'S, OR SENT DIRECT.  
 A Guarantee With Each CONE-COIL.

**MUNZIG RADIO COMPANY**

Manufacturers  
 Redlands, Calif., U.S.A.



# MAXIMITE RADIO BATTERIES



**B-E-S-T**  
 for Your  
Radio Set

**NOISELESS!**  
**LONGER LIFE!!**  
**ECONOMICAL!!!**

MAXIMITE Radio Batteries may be placed anywhere without fear of damage to furniture.

Your Radio Dealer Can Supply You

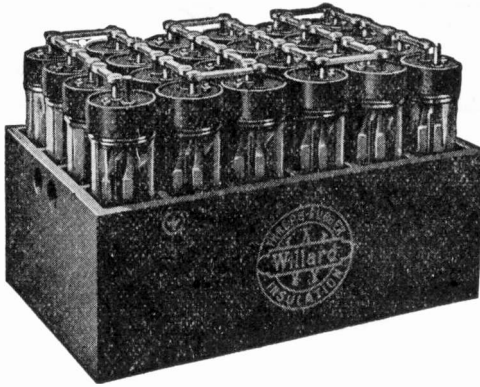
**DISTRIBUTORS**

**Globe Accessories Co.**

309 W. Jefferson St.  
 Tel. HUmbolt 8505

**Consolidated Battery Co.**

1510 Santa Fe Ave.  
 Tel. TUcker 7534



Willard CBR-127—48 Volt "B" Battery

## THE ABOVE TYPE OF BATTERY USED BY 178 BROADCASTING STATIONS

To insure listeners in that broadcast programs will reach them as nearly true to natural tone as it is possible to send, 178 stations are using Willard Batteries.

The same good results in reception are obtained when Willards are used. New stations are brought in and programs more thoroughly enjoyed. New knowledge of clearness and freedom from noises adds to the pleasure of owning a set. Hook on Willards to learn just how good your set really is. Ask for a demonstration.

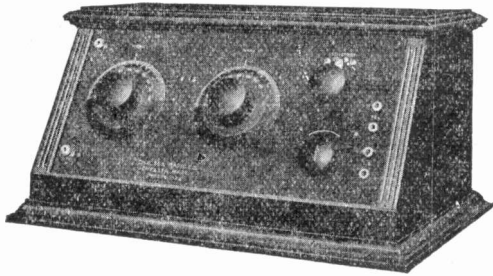
### *All These Dealers Sell Willard Batteries*

Burbank—John Null	San Bernardino—C. H. Stickel	Santa Monica — Guy Hammond
Ontario and Upland—R. J. Tobey	Whittier — Whittier Auto Electric Co.	Gardena—Gardena Battery & Ignition
Long Beach—A. C. Walker	Pasadena—F. W. Birnie.	San Pedro—Auto Electric Service
Santa Ana, Orange, Fullerton — Orange County Ignition Works	Riverside — Mission Auto Electric Co.	Alhambra—Alhambra Auto Electric Co.
Monrovia—Emil Lindstrand	Anaheim—A. Bevillard	Torrance—Torrance Auto Electric
	Glendale—E. W. Cizek Co.	

Los Angeles—Western Auto Electric Co., any Radio Jobber or Dealer or any Willard Service Station.

San Francisco—Julius Brunton & Sons Co.





# The Chelsea

3 tube \$45

5 tube \$55

They must be giving satisfaction, as they are selling faster than we can get them in. Get your demonstration today, in Los Angeles, from

- LINDHOLM MUSIC CO., Orange, Calif.
- SAN PEDRO STATIONERY, San Pedro, Calif.
- L. C. WESTBROOK, 5903 Pasadena Ave., Los Angeles
- BAIRD RADIO, 3625 E. First St., Los Angeles

Distributed by

## PACIFIC MOTOR SUPPLY CO., Inc.

MEtro. 0568

922-4-6 So. Main St., Los Angeles, Calif.

## DID YOU EVER

**Burn Out Your Tubes or Have Your Set Go Dead on Sundays?**

For your convenience we are staying open SUNDAYS and EVENINGS, carrying a full line of Standard Tubes and Batteries, and maintaining an Expert Repair Department.

**TUBES REFILLED . . . . . \$1.50**

Mail Orders Filled Same Day as Received.

## GRAND AVENUE RADIO CO.

2218 1/2 South Grand Ave., Los Angeles

Phone WEstmore 1284

## SPECIALIZING ON SUPER-HETERODYNES

Your RADIOLA SUPER will not do its best until it is properly balanced and logged. We will gladly give information to experimenters building BEST SUPERS or others. Sets of carefully matched Remler transformers at the regular price.

### C. R. PARKER

*"In the radio field since 1907"*

AUTHORIZED RADIOLA DEALER

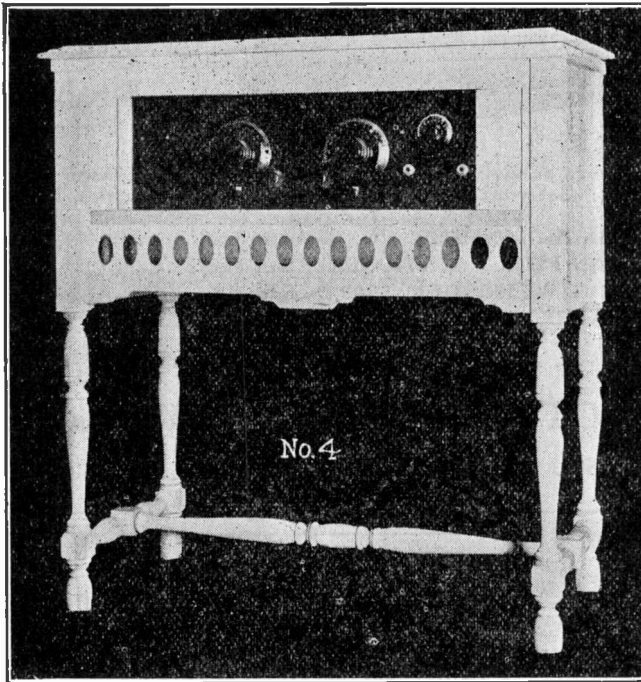
TUcker 2747

LOS ANGELES

1216 Hill St.

# K L A M O R

*Console Cabinet of Superior Excellence*



## NO. 4 KONSOLE

Made for all sizes of sets, such as 7x10; 7x12; 7x14; 7x18; 7x21; 7x24 and 7x26; 31" long, 16" wide, 13" inside depth. Grill covered with brown silk. Made to conceal dry batteries, wet batteries, horn, etc. Hand rubbed finish in American Walnut and Brown Mahogany on gum. Horn space  $4\frac{1}{2}$ x26.

Price \$30.00

Also See KONSOLES No. 1 and No. 2  
Prices \$20.00 and \$25.00, Respectively

Made adjustable to fit any size receiving set

Walnut, Mahogany or Two-Tone Finish  
Adaptable to most receiving sets.

When crated extra charge of \$1.50 will be made on this model.

*Manufactured by*

**KLAMOR MANUFACTURING CO.**

1617-39 McGarry St.

Los Angeles, Calif.

*Wholesale Distributors*

YALE RADIO ELECTRIC CO.

UNION HARDWARE CO.

COOK-NICHOLS CO.

MYERS ELECTRIC CO.

LINCOLN RADIO CO.

LOS ANGELES, CALIF.

?

## Questions and Answers

?

Conducted by  
K. G. ORMISTON, Technical Editor

**QUESTION**—We have a Crosley Model X with two book condensers, one stage of R. F. amplification, detector and two stages of audio amplification, using 200 and 201A tubes, 90 volts B battery, 100 ft antenna, 60 ft. high. This is all of our equipment except Radio Doings and including same will say that we are at peace with our investment as it is and for what it was designed. But we want all the features of the advertised honeycomb coil set. As we understand there is a set of coils to plug in for each wavelength band. Can our old Crosley be worked over to this end. Having this class of reception in view, and in the event the Crosley could not be worked over, what is your opinion of honeycomb coil set with push-pull power amplifier for an all around receiver? H. L. STAFFORD, Summit, Ida.

**ANSWER**—Would not advise attempting to convert your present set into one of the honeycomb coil type. We assume by "honeycomb coil set" you refer to the old three circuit regenerative circuit which was used in commercial radio practice as far back as 1916. It still is a very efficient arrangement but possesses the drawback of being able to squeal fiendishly, not only in your ears but your neighbors' also. The feature of being able to change the set of coils and hence cover various wave-bands is of little interest to the broadcast listener, because one set will cover the whole broadcast band and bring him in all he wants to hear, excepting, of course the very short wave experiments of KDKA and WGY. The honeycomb coil arrangement would not be any use for that purpose either, because they don't make 'em small enough, and with low enough losses. If you like to experiment and "build your own" the three circuit honeycomb coil outfit is an interesting and efficient set to operate, but would suggest you keep the Crosley as is, for purposes of comparison.

# WESTINGHOUSE BATTERIES

and

## Radiolas

(all types)

DEMONSTRATION ON REQUEST

### Harry W. Harrison, Inc.

848 South Flower St., Los Angeles, Calif.

Phone BR. 5824

# This is the Superheterodyne Year

And following our usual custom of giving the public what they want when they want it we announce large stocks ready for immediate delivery of the following equipment.

**BALDWIN PACIFIC  
BRANSTON  
ULTRADINE  
SILVER MARSHALL  
SANGAMO  
REMLER  
BROWNING-DRAKE REGENAFORMER  
KITS  
VELVET DIALS  
NATIONAL CONDENSERS**

## **RADIO SUPPLY CO.**

920 So. Broadway

Los Angeles, Cal.

Open Evenings Until Nine—Sundays Until Noon



## Questions and Answers—Continued

QUESTION—I wish to say something about Silent Night, and incidentally to ask a question. The silent nights that I am most interested in are those for telegraphic spark and CW transmitters in the 200-600 meter band. They come in in groups of twos and threes all over my dials during the whole of the regular telephonic broadcasting periods. These telegraphers are exceptionally persistent, never still more than a few minutes at a time, and create a steady jam that simply shatters all DX reception, no matter with which station I try to listen to, either using the loud speaker or headset. Will you kindly tell me where I may apply for relief from this telegraphic storm? A few words about the broadcasters: Their work is splendid, and if they could work out a plan of operating on alternate nights it would doubtless bring them much commendation. However, I think elimination of other interference in this locality is the most important at this time.

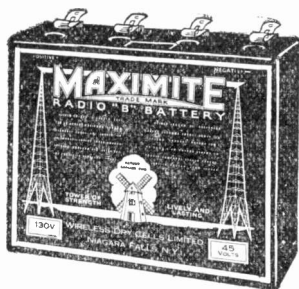
A. T. SAVAGE, Lawndale, Cal.

ANSWER—As we have explained often before, each particular locality has its own peculiar conditions of radio reception. In a congested district, for example, the difficulty may be too much broadcasting locally; in a small town with an antique telephone exchange, the problem may be interference from that source; and apparently around Lawndale the grief is from amateur code-shooters. We are assuming that you have a good selective receiving set, and that your experience is that of your neighbors in Lawndale. We would then suggest that you call in an amateur operator or anyone who can read the Continental morse code, and he will in a few minutes tell you the call letters of the stations which cause your interference. Consulting the callbook will tell you the type of station, location and name of owner. You are then in a position to determine whether it is interference which is legitimate or otherwise, and in position to make a report to the Supervisor of Radio at San Francisco, who will take immediate action if the radio regulations are being violated.

# MAXIMITE

TRADE MARK

## Radio A-B and C Batteries



Equipped with the Universal Two-in-One Connection, which Radio Operators find not only convenient but more satisfactory. Maximize Batteries are the most dependable, up-to-date and economical batteries you can buy.

Maximize means: Maximum strength, life and service. Strong recuperative powers.

WIRELESS DRY CELLS LIMITED  
NIAGARA FALLS, N. Y.

Broadcasting Daily over CKCL, 357  
Meters

Distributed by

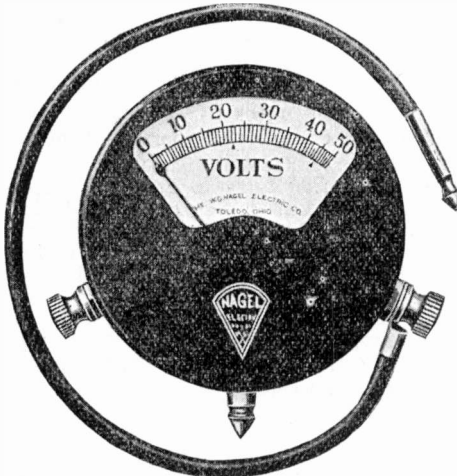
## ELECTRICAL SPECIALTY CO., INC.

San Francisco  
61 Fremont St.

Los Angeles  
443 S. San Pedro St.

Seattle  
1041 Sixth Ave., South

## Questions and Answers— Continued



No. 22—About  $\frac{1}{4}$  actual size

## 60 ohms per volt!

The correct resistance for a radio battery measuring instrument — no more because it is not necessary. But it must not be less, otherwise there is danger of draining your battery. Nagel Voltmeters and Voltmeters offer the radio fan a pocket type measuring instrument built to the highest standard—safe to use by touch contact or under continuous service. They're fairly priced too. Ask your dealer or write The W. G. Nagel Electric Co., Hamilton St., Toledo, Ohio.

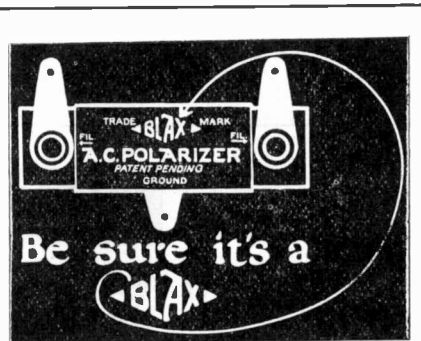


**NAGEL**  
Manufacturers of  
**DRY CELL TESTERS • AMMETERS**  
**HIGH-RESISTANCE VOLTMETERS**  
**and VOLTAMMETERS • BAKELITE**  
**HOT MOULDED INSULATIONS**

QUESTION—Could you please tell me why KFVB comes in with so much noise? KFON used to come in clear, but lately is all noise also. Stations under KFVB on the dial, such as KWG, KFQU, KPCC, etc., all come in clear. I am using a three-tube Echophone, factory built.

O. PRITCHETT, Upland, Calif.

ANSWER—This new station seems to be poorly received in some localities and perfectly received in others. The difficulty is probably due to interference, there being dozens of stations in the country operating on the same wavelength. Their carrier is badly mushed up through heterodyning in some sections, while at other points there is no interference. It is no fault of the station, but a condition which is due to the great congestion at and near their wavelength.



**ELIMINATE YOUR  
Storage "A" Battery on  
REFLEX RADIOS.**

### ANNOUNCEMENT!

Increasing volume of sales has enabled us to lower the price of Blax Polarizers. These wonderful "A" battery eliminators are cutting costs of radio operation in all parts of the U. S. and Canada. Nearly 5,000 in Los Angeles alone are using the electric light current with a Blax. Why bother with a storage battery!

NOW \$1. Ask your dealer or send a dollar bill with his name.

**BLACK BROS., Inc.**  
502 Black Bldg. Los Angeles

## Questions and Answers—Continued

**QUESTION**—I am very much interested in the short wave set recently described in Radio Doings. However, I would like to build the set so that it will take care of wavelengths from 200 to 500 meters. Can you give me the specifications for the coils that will do this? Also I would like to know at what time the stations such as KDKA broadcast on the short wave lengths. Thanking you in advance and wishing you a continued success with the little red book, I remain,  
S. W. HARRIS, Los Angeles, Cal.

**ANSWER**—The little Kelcoil corresponds to the type of circuit and wave band you wish. Litz wire is used on all three windings. The secondary consists of 40 turns on a  $2\frac{7}{8}$  inch tube. The primary has 16 turns wound right on top of the secondary. The tickler coil is on a 2-inch tube, mounted so as to rotate within the other windings. It comprises 50 turns. We do not know the schedule used by the short wave transmitters, excepting that we have been able to pick up KDKA at about 3:45 p. m. our time, almost daily during the winter.

**Special Sets Built**

**Expert Set Repairing**

### AERIAL INSTALLATIONS

*Are Our Specialty*

Let us estimate and build you a proper aerial for distance, volume and selectivity. We can absolutely eliminate power and other noises with our new type inexpensive antenna.

## GUY H. DENNIS

Successor to

**Baughman Radio Engineering Co.**

1249 So. Alvarado St., Los Angeles. BEacon 8509 Open 8 A. M. to 9 P. M.

## In South Pasadena

### THE RADIO ELECTRIC

1165 FAIR OAKS AVENUE

*The Best in Radio*

OPEN EVENINGS

SKILLFUL SERVICE

Pasadena Phone, Sterling 0269

Los Angeles Phone ELiot 3397

## We Know Our Stuff and Do Our Stuff

New Location—417 West Pico

**Burns Speakers \$22.50**

A perfect Speaker for music and speech

**NEUTRODYNE SPECIALISTS**

Call TUCKER 2433

For Service or Information.

**2-Tube Reflex**

With A. C. Attachment

Eliminates Charging Batteries  
Complete, Installed, with Aerial

**\$75.00**

## STANDARD RADIO CO.

417 West Pico Street (formerly at 1048 South Olive)

Los Angeles, Calif.

*Build Your Own Reflex*

With

Genuine **LEMCO** Equipment  
EQUIPMENT

## No. 55 Knock Down Kit



**Price \$25.00**

*Distributed by*

**J. D. COLFORD CO.**

400 San Fernando Bldg., Los Angeles

*Manufactured by*

**Lee Electric & Manufacturing Co.**

220 Eighth St., San Francisco

good tubes  
for a  
good set



**MAGNATRON**

Southern California Distributors  
Los Angeles

**WESTERN LIGHT & FIXTURE CO.**  
301 So. Los Angeles St.

**DEALERS' SUPPLY CO.**  
323 So. Western Ave.

**C. W. SMITH CO.**  
1020 Crocker St.

**PACIFIC RADIO LAB.**  
Distributors to the Wholesale Trade Only  
360 So. Los Angeles St.      LOS ANGELES

M. A. R. S. Announces the  
**M. A. R. S. SELECTOR**

A small, neat, efficient instrument, that can be attached to any type set, without alterations, and that will give set **GREATER SELECTIVITY, GREATER VOLUME**, with less battery current, and **WONDERFUL TONE QUALITY**.

Can be used on **SUPER-HETERODYNES, REFLEXES, NEUTRODYNES** and **REGENERATIVE SETS** without any alteration of the SET.

No difference what type set you have, ask the **MAN** from **M.A.R.S.** to show you how to improve it by use of a **M.A.R.S. SELECTOR**. A phone call will bring you real Radio Satisfaction.

**Price \$10.00**

*Mail Orders Shipped Same Day*

SOLD ONLY BY

**MANUAL ARTS RADIO SHOP**

4154 Vermont Ave., Los Angeles, Calif.

VERMONT 7836

# Radio Without the Horn



Goodbye to the  
Old-Fashioned  
Horn Speaker

**\$42.50**  
Loudspeaker  
Included

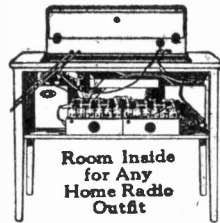
Ample Space for  
All the Rest of  
Your Outfit!

*Windsor Loudspeaker  
Console*

Patented Nov. 18, 1924

A piece of real living room furniture of pleasing lines and finish—and it accommodates all the miscellany of equipment which hitherto had no place except on table tops, shelves or floor. Ample space on top for any set, with plenty of elbow room in front. Nothing in sight but the dials. Everything else goes inside—from behind—in spaces cleverly designed to hold the largest batteries and outfit—besides the self-contained loudspeaker—all unseen and protected from dust or disturbance.

It does a better job of reproducing, for it has the best unit of all that have been tried and its sound-box is of resonant wood instead of metal fibre, or compositions.



Room Inside  
for Any  
Home Radio  
Outfit



Top Accom-  
modates Any  
Radio Set  
Knee Room  
Below

**Clip This Coupon and Get the Facts**

## THE WINDSOR FURNITURE COMPANY

Inc., Chicago, 1888

917 Maple Avenue

Los Angeles, Calif.

I am a { Dealer } and would like your descriptive pamphlet giving  
          { Fan } full details of the Windsor Loud Speaker Console.

Name.....

Address.....

## Arthur Lynch Sends With 201-A Tube

If someone suggested he could transmit overseas with 2 watts of power and a single receiving tube, you might laugh, and yet:

With a home-made short-wave transmitter, comprising a single 201-A tube, a 180-volt B battery on the plate, a 6-volt A battery, and a few spare parts, Arthur Lynch, commercial operator, and incidentally Editor of Radio Broadcast, has succeeded in communicating with operators in several foreign countries and amateurs in all nine U. S. Radio districts. His set, described as an exceedingly homely affair, is portable and was used with great success on a recent trip by boat to the Bahamas.

Briefly this transmitter, which is scarcely larger or more bulky than an ordinary single-tube receiver, consists of a one radiotron tube such as we all use in reception, a 180-volt B battery hooked up to the plate circuit, a 6-volt A battery for lighting the filament, a few turns of bell wire on an oatmeal box, a variable condenser like those found in many receiving sets, and a vacuum tube socket. His sending key was connected in the plate circuit, permissible in this type of low-powered transmitter, although prohibited in higher-powered transmitters as bad practice. He used straight CW transmission, and held two-way communication, in code, with operators in France, England, Belgium, and in every U. S. radio district, on 75 meters at night. The Antenna used had a natural period of 455 meters, but a shorter antenna having a natural period of 150 meters, was also used with nearly as great success. The first antenna was actually 180 feet in length, and comprised four wires approximately 80 feet above the earth or water. The shorter antenna was a single wire, only 60 feet in length and 30 feet high. Of course, Mr. Lynch also carried a good radio receiving set.

Explaining that the set was experimental and that a better and more compact one was being planned at the Garden City Laboratory, where experimental work in shortwave work is now going forward, Mr. Lynch said: "It is the aim of the Radio Broadcast laboratory to establish a sort of central office for explorers who go into the field with short-wave sets. Our radio experts plan to co-operate with ex-

### ATTENTION !

#### Owners of Radiola Super-Heterodynes

Our Super expert can make your set perform and bring in the Distance.  
If yours is not doing all it should,

PHONE Westmore 3797

FOR

TUBE BALANCING - BATTERY SERVICE - AERIAL SERVICE  
TROUBLE SHOOTING

#### ANDREWS RADIO SERVICE

Westmore 3797

Los Angeles

1015 West 11th St.

### R - E - M - E - M - B - E - R

*We Fix 'Em or No Charge*

**THAT** this is the Only place that will guarantee you East of Rockies on your Super-Heterodyne or Neutrodyne.

**THAT** this is Not an Ordinary Radio Shop—it is a Radio Laboratory.

**THAT** we have Laboratory Equipment and Know how to Use It.

**THAT** if we do not make your Radio Play Distance, there will be no labor Charge.

#### PALMER RADIO CO.

Open Till 9 P. M.

4529 So. Vermont Ave.

Vermont 7883

Los Angeles, Cal.

plorers such as Beebe, Rice and McMillan, acting as a sort of radio clearing house for them, receiving and forwarding their traffic."

Mr. Lynch believes there is great future in short-wave code work around 75 meters, but has also experimented on shorter wave lengths.

The use of such low power, less than 2 watts, he points out, is almost ridiculous, when we realize that an ordinary electric light bulb uses 25 watts at least.

Although his successful transmissions were all conducted at night, the laboratory at Garden City is planning to operate in darkness and daylight, and to this end a real set is being constructed there. It will be of approximately 10 watts in power.

The portability of his small set is possible because of the small current consumption used on the plate, making large B batteries unnecessary, thus saving weight. The use of short aeriels is also possible because of the short wave lengths employed, all of which points to possible utilization in field work. The Signal Corps of the Army, it is known has been working to develop a small and light transmitter for the Infantry in the field for some time.

During a recent visit to Washington, Mr. Lynch conferred with Maj.-Gen. George O. Squier, formerly Chief Signal Officer of the Army, and Dr. Jas. H. Rogers of Hyattsville, Md., who is experimenting with short-wave underground radio transmission and reception. Arthur Lynch, it will be recalled, handled the American end of the direct trans-oceanic broadcast reception tests last fall, co-operating with Hugh Pocock of the British magazine, *Wireless World*.

## Standard Short Waves

Fans and amateurs interested in adjusting their wave meters and receivers to some of the shorter wave lengths will have an opportunity on April 20, and July 20, when WWV of the Bureau of Standards, Washington, D. C., and 6 XMB of Stanford University, California, send out Standard frequencies. On April 20, at 10 p. m., these stations start transmitting on wave lengths running from 100 meters down to 50 meters, and on July 20, from 200 meters to 100. Longer wave length standards will be transmitted on May 5 and 20th and July 5th.

# PERFORMANCE + SELECTIVITY= R P M

A trial is all that is necessary to prove the exceptional quality of the

**4-TUBE R.P.M. RADIO  
RECEIVER \$50** Less  
Accessories

See this machine at your local dealer

## MYERS & SCHWARTZ

Pacific Coast Distributors

Los Angeles San Francisco Seattle

IF YOU WANT THE  
BEST—TRY



*Made in California and sponsored by the same people who make the famous Virginia Dare Flavoring Extracts.*



## I Am Radio

By ERIC H. PALMER

I am a university, right in your room.  
 I am an opera, sung by your friends.  
 I am an orchestra, to set your feet a-dancing.  
 I am a band, to enthuse your musical soul.  
 I am an orator, whose eloquence holds you still.  
 I am a violin recital, rendered by a master at your side.  
 I am a statesman, conferring with you on the nation's needs.  
 I am a diplomat, voicing a foreign friendliness.  
 I am a doctor, coming to your home without charge.  
 I am a banker, watching your laid-away dollars.  
 I am a leader of industry, analyzing the economic trend.  
 I am a newspaper, describing events as they happen.  
 I am a drama, played in your parlor.  
 I am a musical comedy, without speculators' tickets.  
 I am a debate, where you hear both sides on the day's problems.  
 I am a ball game, with thrills by the score.  
 I am a boxing championship, with a seat at the ringside.  
 I am a governess, teaching your children each day.  
 I am a scientist, revealing wonders that you knew not of.  
 All these am I, and more—  
 I am a patriot, kindling anew your love of country.  
 I am a preacher, reawakening your faith in God!  
 Yet poor, foolish men just call me RADIO.

### HAVANA, CUBA ON CRYSTAL SET

Using the No. 2 (Texas)  
Hook-up and an A-1 Crystal

"We had PWX, Cuba, on our crystal set and tuned in on tube set for verification. We could not believe it.

"Also received stations in eight states. These included WBZ, WGY, WTAM, WOR, WHB, WNJ, WAS, WEBH, WLN, WLS, KDKA, WCBF, KFNF."

—E. H. W., Louisville, Ky.

### A-1 THE WONDER CRYSTAL

For Reflex or Crystal Set

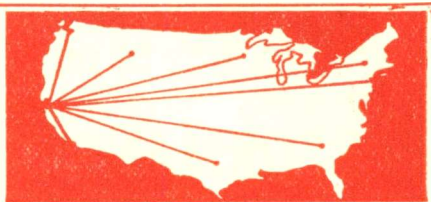
Sent postpaid, fifty cents each  
Sixty cents C. O. D.

Texas No. 2 Hook-Up Free with Order if you mention Radio Doings

California Radio Minerals

Harry Grant, Jr.

904 Oak Grove Ave.  
Burlingame, Calif.



### ON ONE TUBE

BIG FREE BOOKLET tells the story. Calif. users of CROSS COUNTRY CIRCUIT hear Atlantic Coast, Canada, Mexico, Cuba and Hawaii. Our new plan makes this set easiest and cheapest to build. One hour puts in operation. One tuning control. No soldering. Any novice can do it. BOOKLET FREE or complete instructions 25c.

#### WHAT USERS SAY

EAST—Am more than pleased with the parts ordered from you. The first night I hooked it up and received Omaha. Since then Minneapolis and Los Angeles. It works better without amplification than most sets with two stages. —Donals, S. C.

WEST—I am sending you a list of some of the stations heard on one tube: WBB, WGY, KDKA every night; PWX, WWJ, WTAM, WLW every night; CFAC, CHCB. Not long ago I purchased another set of parts from you and first night set WGE, Buffalo, and KDKA. —Jones, Calif.

NORTH—Received coils O.K. today. If I have same results with these that I had with last will be wanting more. I am 1,500 miles from nearest station and have picked 58 to date. Chicago, Havana, Mexico, New Orleans and TWO in ENGLAND. —Lunenburg, Canada.

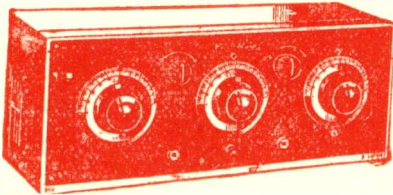
SEND FOR FREE BOOKLET

VESCO RADIO CO.

BOX RD-117

OAKLAND, CALIF.

# Dealer's Attention!



**Marwol 5-Tube Set**  
**\$60**

**GUARANTEED**

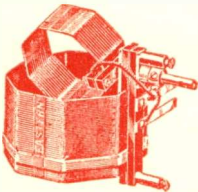
This set will bring you repeated business—looks like a \$100 job.

## Farrand Speaker

Has plenty of volume and the voice of a nightingale for reproduction—

**\$35.00**

*Farrand*  
*Godley*  
**SPEAKER**

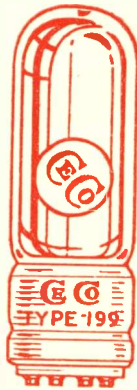


**Ce-Co**  
**Tubes**  
**\$3.00**

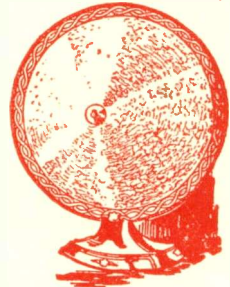
**Eastern**  
**Lo-Loss**  
**Tuners**

**\$6.00**

Brings in  
Distance



**\$35.00**



Hear the  
**MARWOL**  
**"BABY GRAND"**

**\$45.00**  
—real value

Ce-Co Tubes are Guaranteed—\$3.00. Dealers, get our discounts on this quality Tube. A real business getter

**Lincoln**  **Radio Co.**

Los Angeles, Calif.

Wholesale Only  
FAber 0665

1151 Santee St.

## Trade Notes

As a result of the recent visit of Colin B. Kennedy to the Coast, Kierulff & Ravenscroft now announce themselves as exclusive Kennedy distributors for California.

Mr. Kennedy was very optimistic over prospects in the radio business for 1925. He predicted many advanced methods in both merchandising and manufacturing of radio equipment.

The General Instrument Company's equipment has been added to the stock of Kierulff & Ravenscroft.

C. C. Langevin, who for some time past has been associated with the Atlantic and Pacific Agencies Corporation, San Francisco, is now in business under the name of the C. C. Langevin Co., and are exclusive representatives of the General Radio Company for the Pacific coast and six Western states. This firm is located at 383 Monadnock building, San Francisco.

A. S. Lindstrom Company, with headquarters 274 Brannan Street, San Francisco, California, with branch offices and warehouse at Los Angeles, Portland and Seattle, have just established office and warehouse at Salt Lake City, Utah, for the district covering Utah, Northeast Nevada, South Idaho, West Montana, and West Colorado.

This district will be in charge of The Jennings-McCollom Company, 407 Dooly building, Salt Lake City, Utah.

Mr. H. S. Jennings and J. G. McCollom have lived in Salt Lake City for a number of years and see great possibilities in building up the radio business through a radio trade association that is proposed to be established for that district. There are two good broadcasting stations at the present time and one more in contemplation.

The Radio Distributors Co., 84 Second St., San Francisco, are exclusive distributors for the Pacific Coast for the Air Service Sets; they are also distributors for northern California for Klamer Mfg. Co., Los Angeles, makers of radio cabinets, Tonodyne Radio Laboratories, of Oakland. They also distribute the new Kellogg horns. This firm is an exclusive radio jobbing house.

The Manual Arts Radio Shop, located at 4154 Vermont avenue, Los Angeles, Cal., are now manufacturing the M. A. R. S. Selector. This selector can be connected to any set without alterations, so as to get maximum selectivity, distance and volume, with a minimum battery consumption.

The Pacific Radio Laboratory, located at 360 S. Los Angeles Street, Los Angeles, Cal., are factory distributors for Magnatrons and Perfectrons, catering to jobbing trade exclusively, their products being backed by a national advertising campaign and worthy of consideration.

### HAVE YOU TRIED NATIONAL REFILLS?

The Guaranteed Refilled Tube at the New Low Price

Look For This Trade Mark

Providing you send us  
your standard  
Burnt Out Tubes



**\$1.50**

It is the Mark of a RIGIDLY TESTED and GUARANTEED Refilled Tube  
Ask your dealer. If he cannot supply you—send direct to us. Dealers Write for our  
Attractive Proposition

### NATIONAL RADIO TUBE CO.

748 14TH STREET

SAN FRANCISCO, CAL.

We buy and pay 15c each for Burnt Out Standard Tubes—(except W. D. 11's-12's)

## Out of the Air

KFQU is no more. The call letters of the Illustrated Daily Herald and Julius Brunton & Sons Company's station have been changed to KJBS, due to the similarity of the call letters with the stations KFQU and KFUU.

Station WRNY, the new radio broadcast station of the Experimenter Publishing Co., Inc., of 53 Park Place, New York City, will be opened within the next eight weeks. This station will be located on the 18th floor of New York's most up-to-date Hotel, The Roosevelt. This will be a 500 watt station operating on 275 meters.

How would you like to hear a question of yours answered by Gloria Swanson over the radio, with your name and address mentioned? The marchioness movie star will make her first radio appearance in this country since her return from France, at Station W-G-N, the Chicago Tribune station on The Drake Hotel, in a "radio interview" on Tuesday, April 21. The announcer will put to Miss Swanson fifty questions that have been submitted by the radio listeners and she will answer them before the same microphone.

A radio thief catcher is used in Berlin, according to reports. It's an electrically wired gateway, which is designed to be placed at the exit of factories and mines. A gate keeper with a pair of head phones listens as the workman passes out. The electrical apparatus is so adjusted that whenever an extra amount of metal is carried through the gate, a sharp singing noise is heard in the head phones. Small metal coins, or a pocket knife, are not noticed, but larger amounts of metal concealed on any workman is immediately detached. This appliance is to be used to stop the theft of precious metals and tools by employees.

To determine the number of radio sets in Queens county, New York City, a canvass was made recently under the direction of municipal authorities. It was found that 34,994 radio sets were in the homes of the county. As the 1923 population of Queens county is officially 469,042, and allowing for a normal increase, the percentage of radio sets is one for every 14 persons. Taking four or five listeners in each home the average is about one set in every three homes.

Only one application in six is granted by the radio division of the United States patent office.

Don't forget that connections soldered with paste may corrode if not used properly and wiped clean after use. If you use aluminum wire for the antenna be sure that it is all one piece from the end to the set, as if it is not the connections will be liable to oxidation, with resultant noise.

The official order of the Department of Commerce authorizing the amateurs to use the wave channels between .7496 and .7477 meters, permits experimental work in "beam transmission."

# PREST & DEAN RADIO CO.

ESTABLISHED 1918

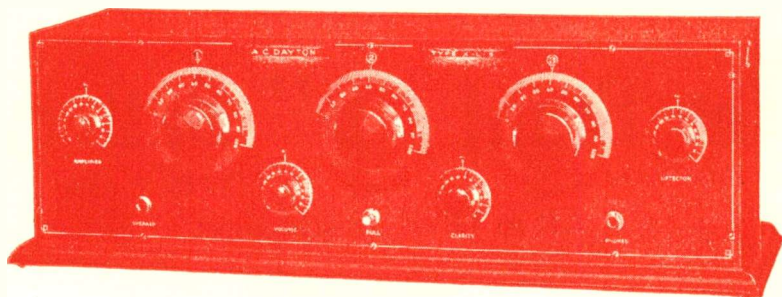
The Best in Radio

AMERICAN AT FOURTH

PHONES 617-970 617-78

LONG BEACH, CALIFORNIA

# A. C. DAYTON



*"It has been proven by performance"*

**M**ANY Radio Receivers are "Claimed" to have the qualities of distance getting ability, volume, clearness, selectivity, easy tuning, beauty, etc., etc. These same qualities are "Claimed" for receivers ranging in price from \$16.00 to \$500.00; with two to eight tubes and also of the various radio circuits. How are you going to choose your receiver?

Here, we believe, is the real test for a radio receiver. Will it give satisfaction under all normal conditions, and will it "Stay Sold?" Extravagant "Claims" mean nothing unless backed up by Performance.

Here are some Facts about the A-C Dayton XL-5 Receiver (1) It **Stays Sold**. (2) It will perform to maximum efficiency in small towns or large cities. (3) It will perform when subjected to heavy local broadcasting, or when necessary to tune in distant stations. (4) It will perform in apartment houses, brick or frame houses. (5) It will perform in the center of large cities or suburban districts.

The A-C Dayton is unreservedly guaranteed because it has a record of giving satisfaction. The guarantee means something, for it is backed by a reliable company with a record of over twenty years' honest merchandising.

**WRITE US and we will have your nearest dealer demonstrate**

Exclusive Distributors for Southern California and Arizona

## Pacific Motor Supply Co., Inc.

A. FREED, President

ED. LEBELL, Secy-Treas.

922-4-6 S. Main St.

ME. 0568

Los Angeles, Calif.



# PERFECT RECEPTION AT ALL TIMES

Distance — Volume — Clarity

ON YOUR SET

## The Brant "B" Battery

100 Volts

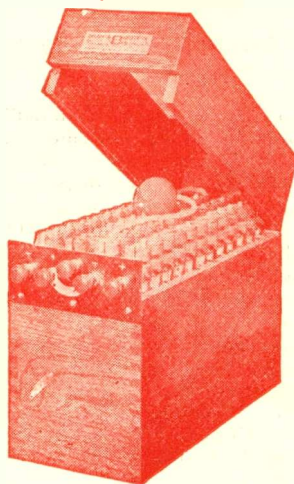
2750 M. A. Cap.

All in ONE Single Unit

Length, 12 Inches

Width,  
5  
Inches.

Height,  
9½  
Inches.



"As good as it looks"

Only  
\$26<sup>00</sup>  
For All  
Your "B"  
Current

Fully  
Guaranteed  
For Years

National Distributors

# Baker-Smith Co.

443 So. San Pedro  
Los Angeles

Call Bldg.  
San Francisco

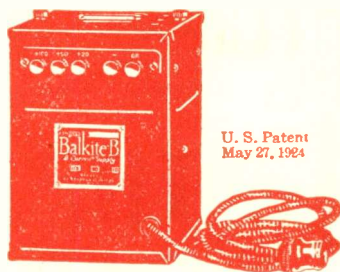
Brant Battery Company, Manufacturers

Phone BEacon 0899

1622 W. 16th St., Los Angeles

# Balkite "B"

*gives results unattainable  
with "B" batteries*



**ELIMINATES "B" BATTERIES.** Balkite "B" eliminates "B" batteries of all types and furnishes unlimited current to both detector and amplifier tubes from the electric light socket.

**IMPROVES PERFORMANCE.** Balkite "B" gives results unattainable with "B" batteries. It will enormously increase the clarity, selectivity and power of your set. It gives tubes longer life. In many cases it also eliminates the need for an aerial.

**FITS ANY SET.** Balkite "B" fits any set [either storage battery or dry cell] of 1 to 10 tubes or more, without changes or additions. It needs no attention, and oper-

ates by merely turning on the light socket.

**NO BULBS.** Balkite "B" is a permanent piece of equipment that will outlive your set. It will not wear out or become obsolete. It has no bulbs to burn out, and nothing to replace. It cannot burn out tubes. It has no fire hazard. Its current cost is  $\frac{1}{10}$ ¢ per hour.

**GUARANTEED.** Balkite "B" is guaranteed to give satisfaction. It has been tested and endorsed by leading set manufacturers. You cannot realize the results it gives until you have heard a set using it. *A demonstration at your dealer's will prove a revelation.* Price \$55.



## BALKITE BATTERY CHARGER

For radio "A" batteries. Has no bulbs or moving parts. Entirely noiseless. The

only charger which can be used while the set is in operation. Price \$20.

# FANSTEEL **Balkite** Radio Power Units

BALKITE BATTERY CHARGER — BALKITE "B" PLATE CURRENT SUPPLY

Factory Representative

LOMBARD J. SMITH, 324 N. San Pedro St., Los Angeles

Distributed by

BRAUN CORPORATION  
363 High St., Los Angeles

WESTERN RADIO, Inc.  
1224 Wall St., Los Angeles

ELECTRIC CORPORATION  
1050 Santee, at 11th, Los Angeles

THE YALE RADIO ELECTRIC CO.  
1111 Wall Street, Los Angeles

MUNSON-RAYNER CORP.  
643 So. Olive St., Los Angeles

Manufactured by FANSTEEL PRODUCTS COMPANY, Inc., North Chicago, Illinois

**See Our Exhibit**

**AT**

**THE PORTABLE  
RADIO SHOW**

**APRIL 20th--25th**

At Figueroa and Pico  
Paul G. Hoffman Bldg.

Featuring

**SELZNICK and THOR-O-DYNE**

Portable Receiving Sets

**THOMPSON NEUTRODYNE**

**THE NEW FEDERAL RECEIVERS**

**PORTABLE LOUD SPEAKERS**

*Wholesale Distributors*

**Yale Radio Electric Co.**

ELEVEN ELEVEN WALL ST.

Los Angeles

Phone WEStmore 1509