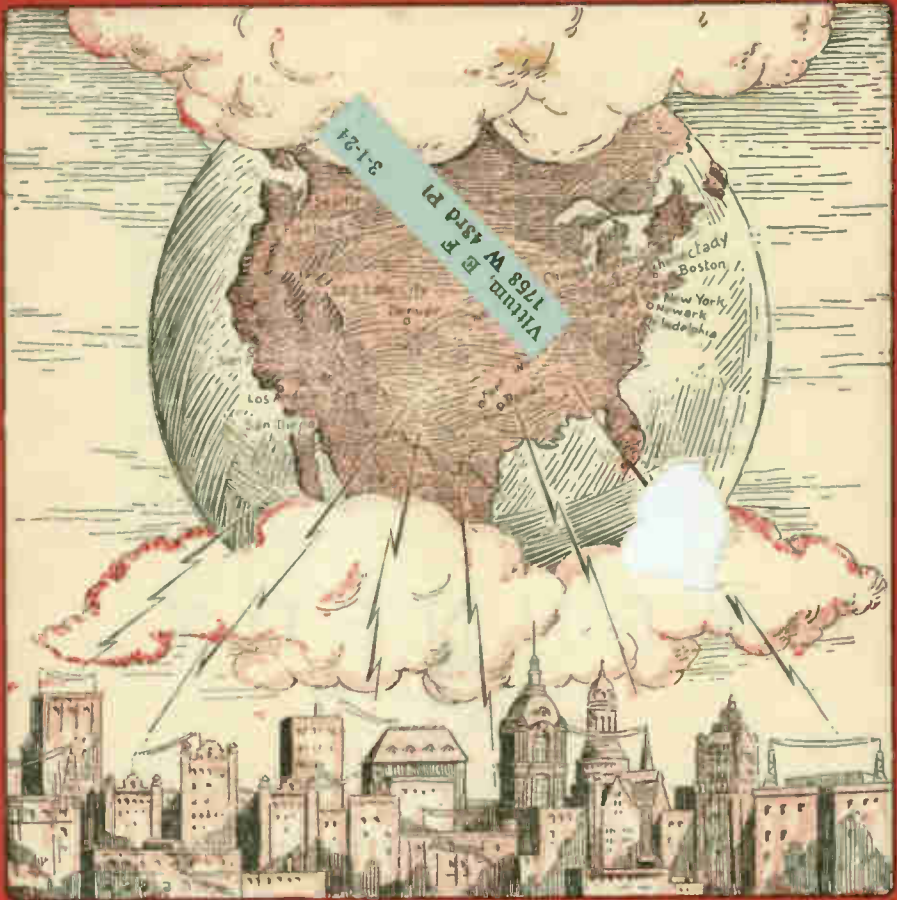


RADIO DOINGS

THE BROADCAST PROGRAM OF THE LEADING
BROADCAST STATIONS — LATEST RADIO NEWS



\$2.00 A YEAR

5 CENTS A COPY



Kennedy Representatives

These Dealers Sell and Service Kennedy Equipment

BARKER BROS.....	Los Angeles
RADIO SALES & SERVICE.....	Los Angeles
NEWBERY ELECTRIC CORPORATION.....	Los Angeles
WHITTIER RADIO DEN.....	Whittier
HILBERT DRUG CO.....	La Habra
KENNEDY RADIO SALES & SERVICE.....	Santa Ana
ANAHEIM IGNITION DEPOT.....	Anaheim
EQUIPMENT SALES CO.....	San Diego
MILLS RADIO CO.....	Riverside
MILLS RADIO CO.....	San Bernardino
KENNEDY RADIO SALES CO. (with Ford Music Co.).....	Ontario
KENNEDY RADIO SALES CO. (with Brown Music Co.).....	Pomona
FALLON & COMPANY.....	Santa Barbara
CAMPBELL MUSIC CO.....	Alhambra
GLENDALE ELECTRIC CO.....	Glendale
CASNER HARDWARE CO.....	Monrovia
E. E. EASLEY.....	Glendora
McWHINNIE ELECTRIC CO.....	San Pedro
PREST & DEAN.....	Long Beach
URNER & JANES.....	Bakersfield
KENNEDY RADIO STUDIOS.....	Fullerton
KENNEDY RADIO STUDIOS.....	Covina

See your local Kennedy dealer for demonstration or write us direct for literature on the new Furniture Model sets

K E N N E D Y

The Royalty  *of Radio*

We are the exclusive wholesale distributors for California

KIERULFF & RAVENSCROFT

Wholesale Distributors

757 SOUTH LOS ANGELES STREET

Phone 628-87

Los Angeles, Calif.

Radio Doings

H. C. CHARLES, Editor

I. T. PERDUN, Business Manager

HALL BERRINGER, Technical Editor

Advertising Representatives:

J. C. PENLEY

J. B. SHILLINGFORD

308 Van Nuys Building

Phone 876-062

Los Angeles, Cal.

(Entered as second-class matter, November 25, 1922, Los Angeles, California
Post Office, Under Act of March 3, 1879)

Copyright, 1923, by Horwood Publishing Co.

Five Cents a Copy

Two Dollars a Year

Vol. III

Los Angeles, December 1, 1923

No. 22

An Association for the Listener-In

Last week we asked our readers what they thought of forming an association to protect the interests of the listeners-in. We have received many replies and telephone calls endorsing the idea. We also printed in our last issue a letter from one of our readers under the heading, "An Evil That Should Be Corrected." This has also been the cause of considerable comment by the listening-in public.

The "evil" referred to in the letter mentioned above is a typical case where the proposed association could be of great help. As individuals, very little could be done to eliminate such troubles, but if a strong association, composed of the vast numbers of listeners-in, could speak with a voice that could not be ignored, results would follow.

The "evil" we speak of is the leaky transformers of the various light and power companies, not forgetting those owned and operated by cities and municipalities. These cause a large amount of the trouble and "frying" we hear on the air and which are all too frequently thought to be "static" and amateurs. If the attention of these companies was called to these matters, and the fact that not only was it annoying many of their patrons but was also a great leak in their power, we believe the "evil" would be corrected. Let us hear from some more of our readers with their ideas.

All the Year for Two Dollars

Do not miss a copy of RADIO DOINGS. Have it mailed every week to your home. Simply sign the blank below. Mail it to us or pay your dealer and let him forward it to us.

RADIO DOINGS, 308 Van Nuys Building, Los Angeles, California.

Inclosed find two dollars for subscription to RADIO DOINGS for one year.

Name _____

Address _____

RADIOS

REPAIRED

AND

REMODELED

OUR services are at your disposal if you are having difficulty or if you would like your set made into a new and up-to-date set. With the **Tone Control** installed on your set we can make a more efficient set out of the one you have.

Let Us Rebuild Your Set For You

REPAIRS

SUPPLIES

FIXTURES

CONVENIENT CREDIT

VERMONT AVE.

OUR
STORE
1177



WASHINGTON STREET

506
OUR
STORE

FLOWER ST.

JEFFERSON STREET

1177 W. Jefferson St.
Phone Beacon 3672

506 W. Washington St.
Phone 289-877

WE DO IT BETTER RADIO-ATICALLY

Transformers

By FRANK D. ANDREWS
Consulting Radio Engineer

An art or science is of importance to mankind in direct proportion to the benefits men derive therefrom; the appreciation of radio, and to a certain extent the pleasure arising from it, will be greatly increased by a knowledge of its principles and development. The accomplishments of the early workers, marking out the trail which was to lead to the present state of the art, make interesting reading and serve well to lay the background for discussing the work of the later scientists and inventors whose contributions are directly incorporated in the radio receiving and transmitting equipments of today.

Everyone is now becoming more or less familiar with radio communication. and it will soon be taken for granted as much as is the telephone to the average person, and the radio entertainment every evening will soon cause no more wonder or interest than do the phonograph or movies. Actually, the simple receiving set of today, picking up music or speech from a transmitting station many miles distant, represents the result of nearly a century of effort and development by scores of scientists and inventors. Before we become too complacent in the matter and take the radio telephone in the same matter-of-fact way we do the rest of our applied science miracles, it is well to take a few of the little things apart that make it go and see how the whole thing ticks.

The various parts which go to make up a radio set have gone through a long series of development before they would function with any degree of success. The only thing of interest to the owner of a radio set after this period of development is that the instrument is not defective, that it is fool-proof, and will continue to operate uniformly always.

Anything mechanical is more or less defective in some respect. Latent defects in construction which cannot be discovered until some period of use are bound to be in a small percentage at least of the articles offered for sale. But this is not the most frequent cause of an accessory not functioning correctly; the greatest defects can in most cases be traced to the improper application of the accessory or misplacing it in the set.

The discriminating buyer is going to find out all about an article before investing his good money in it. It cannot be too strongly impressed that the discriminating buyer of radio apparatus is the greatest benefactor to the industry.

If you have a radio set in your home, and friends come in, the first thing that attracts them is what they hear. The quality of what they hear—that is, the quality of music or the modulation, as we express it—measures how much interest the visitor will take in your instrument.

Quality in radio depends largely upon the characteristics of the audio frequency amplifying transformers employed. It seems that good information as to the proper transformers to use and the respective merits of the various ratios offered for sale is scarce.

Briefly, a transformer consists of a primary winding of a comparatively few turns of wire, wound on but insulated from a laminated iron or ironware core, which carries the current from the preceding instrument in the set; a secondary winding of many turns of wire wound in sections and insulated from all other parts of the transformer. It is this secondary winding which delivers the high voltage in the same proportion as the number of secondary turns is increased over the primary turns.

Transformers may be divided into two classes, depending upon the style of core used: open core and closed core transformers.

(To Be Continued)

FEW Receivers there are which do not require the use of an outside antenna for maximum results.

The cheapest and most efficient way to increase the range and the volume of a set is to increase the amount of energy put into the receiver. A good ANTENNA is the answer. A good ANTENNA properly erected adds to, rather than detracts, from the appearance of your home.

Drop in to see us, or give us a call on the phone. Let us give you an estimate—we shall be glad to send an expert to your home to help you arrange for an installation that will insure maximum results.

The Antenna Construction Company

826 West Seventh Street

Phone 824-627

Los Angeles, Calif.

High Power Radio

About this time there became available the undamped arc system. This system was invented by Valdemar Poulsen and Prof. Pedersen. This was in 1902. This transmitter was just emerging from the elementary stages and had not yet been developed so more than thirty kilowatts could be used.

An American radio company was formed and named the Federal Telegraph Company. These people purchased the exclusive rights in the Poulsen arc system for the United States. They also purchased two transmitters from the Danish Company, one rated at five kilowatts and the other at twelve kilowatts. The Federal Telegraph Company established a plant at Palo Alto, California, for the purpose of developing and manufacturing arc radio transmitters, and undertook the establishment of a few low-power stations on the Pacific Coast of the United States. The first two successful stations were built, one at San Francisco and the other at Heeia in the Hawaiian Islands. Reliable service was established between the United States and Hawaii through these stations, a distance of approximately 2100 miles. About this time the Navy started construction at Arlington, Virginia, of what was going to be the most powerful station in the world at that time. When completed, its signals could be heard under favorable conditions 5000 miles; that is, at night during the winter months. During all seasons of the year, day and night, the approximately range was 2000 miles. This station employed a 100-kilowatt spark transmitter and the antenna was supported by one 600-foot and two 450-foot towers.

The Federal Telegraph Company installed at Arlington a 30-kilowatt arc transmitter to be used in tests to get comparative audibilities of signals from the 100-kilowatt spark and the 30-kilowatt arc set. Tests were made, and with a 50-ampere radiation with the arc transmitter and 100 amperes with the spark transmitter. Notwithstanding the difference in radiated energy in favor of the spark transmitter, the arc set gave a greater audibility of signals than the spark set at Colon and Key West, Florida. The signals of the arc were audible at San Francisco and Pearl Harbor, and the spark did not carry this far. These tests clearly indicated the superiority of the undamped wave system of radio telegraphy over the damped system over long distances.

These tests influenced the United States Navy to install arc transmitters wherever long distance communication was needed. Today one of the highest powered arc transmitters in the world is located at Annapolis, Maryland.

Insist
on the **GOLD SEAL**

LOOK FOR IT



Order from your dealer. Price \$18.50

**Deliveries Now on the
NEW GOLD SEAL HOMCHARGER**

WALTER W. BIDDICK, Inc.
(Wholesale Only)

1316 South Grand
LOS ANGELES
Phone 281-301

116 East Fifth
SANTA ANA
Phone 2525

Prest and Dean Radio Electric Co.

Complete Line of Radio Sets and Supplies

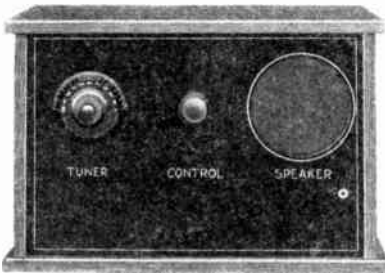
Colin B. Kennedy Sets—"The Royalty of Radio"

742 East Fourth Street, Long Beach

Phone 635-213

The New Roffy Hetro - Trans

Four-Tube Circuit Is Used in the New Jewel Concert Receiver



Distance—Volume
Quality—Selectivity

Complete in cabinet—only 2 controls—battery and loud speaker within the walls. The most complete and convenient receiver on the market—and the simplest to operate.

Because we buy everything in large lots—leaving nothing for you to get—this Jewel Concert Receiver sells at an amazingly low price.

\$97.50—and there's nothing else to buy!

2-tube set assembled complete in cabinet, panel engraved (less tubes, batteries and loud speaker) **\$27.50**

3-tube set assembled complete in cabinet, panel engraved (less tubes, batteries and loud speaker) **\$34.00**

4-tube set assembled complete in cabinet, panel engraved (less tubes, batteries and loud speaker) **\$38.50**

The New Roffy Hetro-Trans Sells
at \$8.50

Build your own set. Save over \$90 and have your apparatus so simply constructed that it is hard to put it out of order. Get clearer tones—more distance—greater volume—better quality and perfect selectivity. Write us today if your dealer cannot supply you.



Patterson Electric Company, Manufacturers
We Sell Direct

239 South Los Angeles Street

Telephone 828-139

Los Angeles, California

DEVELOPING RADIO FOR FLYING

Three different Bureaus of the Government are rushing work to perfect telephone radio sets for transmitting from airplanes in flight. Such transmission is, of course, not new, but efficient sets answering specific requirements are desired by the Army Air Service, the Marine Corps and the Post Office Air Mail Service. The problem cannot be worked out jointly since the specifications are not similar.

Ever since the Armistice, the Army has been trying to develop a combination radio telephone and telegraph set suitable for airplane use, and has just about succeeded. Recent tests with Model Set S. C. R. 134, between an airplane flown back and forth from Bolling Field, Anacostia, D. C., to Quantico, Va., about 45 miles, and the Radio Laboratory of the Signal Corps in Washington, proved the set was practically perfect. Outsiders listening-in on the two-way conversation were deeply interested, following the engineers' conversation carried on over NAA at Arlington, and then picking up Captain Johnson's replies on 400 meters from the plane. The sample transmitter built by the General Electric Co. was found to be satisfactory, the main object being the motor-alternator which furnishes the tone for the interrupted C.W. Transmission, which, it is felt, can be readily corrected and production orders placed. Marine Corps radio and aviation experts recently tested out a new service combination set for use in airplanes, but without very successful results, due chiefly to bad weather conditions requiring low flying. Conversation between officers in the Navy Building, however, and Captain Pierce in a plane over Quantico was carried on, but further tests will be necessary. What the Marine fliers want is a short-wave telephone set using around 100 meters, whereas they have been forced to use a transmitting wave of 500, which they claim is too long and productive of harmonics. Navy set 1345 is therefore being modified and improved. Other tests in spotting practice held at Quantico, wherein a plane gave 'phone reports on target practice, proved satisfactory. The operator in the plane was heard as far away as Baltimore by radio fans who were listening in.

POST OFFICE SEEKS ONE-MAN SET

For Air Mail Pilots, who fly alone on their trans-continental trips, the Post Office Department is seeking a "one-man" radio-phone set, which can be operated by the pilot while under way. Radio telegraphy is useless for mail routes in the opinion of Postal authorities, since they haven't room for an operator, and do not require their pilots to learn code. Radio telephony, therefore, carries the whole burden of aiding in aerial flight, getting orders, calling for aid and directions. A special small and compact telephone transmitting set to operate on about 125 meters is desired. Tests have just been made on a new set developed by the General Electric Co., operating on 180 to 280 meters. Speech is sent out through 5 fifty-watt XL transmitting tubes. The receiver uses seven UV 199 tubes. The operation and adjustment is simple, and the transfer from sending to receiving is made by throwing a switch. After a year's work, a practical standard set has been adopted and an appropriation providing for a set for each plane will be sought. The necessity of small space and weight was one of the difficult problems, but it had to be solved in the interest of carrying as much mail as was possible.

Strangely enough, the Navy takes an exactly opposite view on radio airplane communication from the Postal authorities; Naval fliers have practically abandoned the telephone set and use only radio telegraph, all the pilots being skilled in code transmission.



Get it by Radio

**Did You Hear Our New Echophones
and Dictogrand Loud Speakers?**

Ask for Demonstration

Open Evenings Until 9 o'Clock

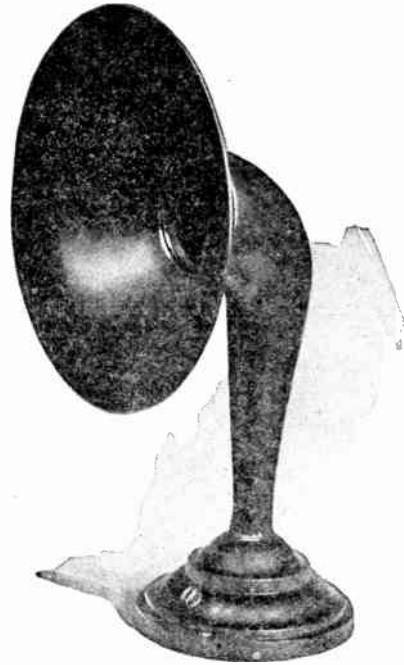
THE CEN-RAD RADIO CO.

800 1/2 So. Figueroa St.

Los Angeles

C.I.C.

- High Volume Efficiency
- Superior quality of reproduction
- Attractive appearance
- Convenient size
- Moderate price
- Adjustable unit.



“Listen to the Difference”

The price of the C. I. C. Loud Speaker complete with 6-ft. cord and plug is

\$14.50

Distributed By
GLOBE COMMERCIAL CO.
 825 West 8th St., Los Angeles

AUTHORIZED JOBBERS

COOKS NICHOLS CO.
 411 South San Pedro St.
 Los Angeles

EQUIPMENT SALES CO.
 San Diego

WALTER W. BIDDICK, Inc.
 1316 South Grand Ave.
 Los Angeles
 116 E. Fifth St.
 Santa Ana

Dealers
MANUAL ARTS RADIO CO.
 4154 South Vermont Ave.
 Los Angeles

8-10 A. M.
PACIFIC TIME

RADIO TIME TABLE

9-11 Mountain Time
10-12 Central Time
11-1 Eastern Time

STATION	METERS	CITY	CALL	SUN.			MON.			TUES.			WED.			THUR.			FRI.			SAT.		
				8:00-8:30	8:30-9:00	9:00-9:30	8:00-8:30	8:30-9:00	9:00-9:30	8:00-8:30	8:30-9:00	9:00-9:30	8:00-8:30	8:30-9:00	9:00-9:30	8:00-8:30	8:30-9:00	9:00-9:30	8:00-8:30	8:30-9:00	9:00-9:30	8:00-8:30	8:30-9:00	9:00-9:30
S. F. Examiner.....	360	San Francisco.....	K U O Z
Reynolds Radio Co....	360	Denver.....	K L Z
Winner Radio.....	360	".....	K F E L	X	X	X
Star-Telegram.....	478	Fort Worth.....	W B A P
News and Journal.....	478	Dallas.....	W F A A
Palmer School.....	484	Davenport.....	W O C
John Wanamaker.....	608	Philadelphia.....	W O O

Radio Standardization Committee Organizing

As an outgrowth of the radio standards conference held in New York last January, the organizing committee met recently and prepared a proposed list of members representing the various phases of the industry.

Dr. A. N. Goldsmith, Secretary of the Institute of Radio Engineers, has written each proposed member organization asking that a representative be named. The Inter-Departmental Radio Advisory Committee has designated its Secretary, L. E. Whittemore, as its representative on the standards committee. Besides the Inter-Departmental Committee, it is understood that the Government will be represented by radio experts from the Army, Navy and Commerce Departments.

In organizing the committee broad representative lines are being followed, as is prescribed in procedure of the American Engineering Standards Committee. Other representatives will be chosen by the commercial and manufacturing industry, making a total of about 25 to 30 members, including producers, consumers and distributors of radio as well as the general public interests.

Regulations for Radio Antennas

Some regulations for outdoor antennae will probably be included in the next edition of the National Electrical Safety Code. A sub-committee on this subject held its first meeting at the Bureau of Standards on October 19 under the chairmanship of L. E. Whittemore of the Department of Commerce. Other members of the committee are C. K. Ahearn, Superintendent of Fire Alarm, Waterbury, Conn.; H. J. Burton, Consumers Power Co., Jackson, Mich.; L. W. Chubb, Westinghouse Electric Mfg. Co.; J. A. Cook, New York Edison Co.; W. M. Craft, American T. & T. Co.; J. H. Davis, B. & O. Railroad, and H. C. Wolf, Maryland Public Service Commission. Messrs. Guthrie, Doyle and Tesch of the Radio Corporation of America and Messrs. C. B. Jolliffe and M. G. Lloyd of the Bureau of Standards were also present.

The committee outlined proposals for the regulation of antenna construction which will be reported to the large Sectional Committee carrying out this revision of the Electrical Safety rules according to the procedure of the American Engineering Standards Committee.

THE
**“Sylinders
 of Sunshine”**

will entertain Radioland Tuesday night, Dec. 4,
 from The Times broadcasting station, Radio K. H. J.

They are being presented by the

SUBURBAN ESTATES CO.

When THIS company gives a program, Radioland
 always gets a real treat. Remember the “Unseen
 Scene?” Jane Novak? Mrs. Grace Senior Brearley,
 Stewart Wille and Luboviski’s Russian Quartet?

Visit

PACOIMA

at your earliest convenience.

Tune in on K. H. J. Tuesday evening, Dec. 4, and hear our sixth offer-
 ing to Radioland. If you haven’t a receiving set of your own, go to
 744 West Seventh Street and hear the “Sylinders of Sunshine” there.
 We have installed a Federal No. 58 and a loud speaker.

Office Open Epenings

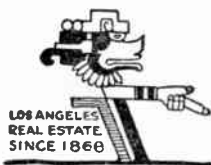
All Day Sunday

SUBURBAN ESTATES CO.

744 West Seventh Street

Los Angeles. Phones 653-25—871-498

Suburban Office, Cor. N. Sherman Way and San Fer-
 nando Road to Pacoima Station



10-12 A. M.
PACIFIC TIME

RADIO TIME TABLE

11- 1 Mountain Time
12- 2 Central Time
1- 3 Eastern Time

STATION	METERS	CITY	CALL	SUN.		MON.		TUES.		WED.		THUR.		FRI.		SAT.	
				10 00-10 30	10 30-11 00	11 00-11 30	11 30-12 00	10 00-10 30	10 30-11 00	11 00-11 30	11 30-12 00	10 00-10 30	10 30-11 00	11 00-11 30	11 30-12 00	10 00-10 30	10 30-11 00
L. A. Union Stk. Yds.	360	Los Angeles	K F C L	X	X												
L. A. Times	395	"	K H J	X	X												
Earl C. Anthony	469	"	K F I	X	X												
Hale Brothers	423	San Francisco	K P O			X	X										
Tribune		Oakland	K L X	X	X												
Warner Brothers		"	K L S					X									X
Gould		Stockton	K J Q	X	X												
Fallon & Co.	360	Santa Barbara	K F H J	X	X												
Guy Gresson		Jacoma	K F E J			X	X		X	X							
Rhodes Co.	455	Seattle	K D Z E							X	X		X				
First Presby. Church		"	K T W			X	X										
Moler & Frank		Portland	K F E C														X
Reynolds Radio Co.		Denver	K L Z				X	X			X			X			X
News and Journal	476	Dallas	W F A A				X	X		X	X		X				X
Palmer School	484	Davenport	W O C						X				X				
Winner Radio	360	Denver	K F E L				X	X			X						
Oregonian	492	Portland	K G W				X	X				X					X



SENIOR
\$25.00



WINNER

Little Senior. A Marvel at the Price. with this new model LITTLE SENIOR at the popular price of \$19.50 the line of TRUTONE LOUD SPEAKERS is complete. LITTLE SENIOR is a loud speaker complete with large mica diaphragm and wooden tone chamber in the base. Horn is made of beautiful non-metallic composition with crystalline finish and stands 24 inches high. Price includes 6 ft. of cord. TRUTONE SENIOR is supreme for all long-distance work, stands 32 inches high, and price includes 6 ft. of cord. Types A and B are amplifying horns for use with any make of two and single phone receivers respectively. Price for either A or B, \$8.00. Horn only \$6.00. Base only \$2.00.

Send for Illustrated Folder
They Speak for Themselves



LITTLE SENIOR
\$19.50

J. D. COLFORD & CO.

Phone 823-269

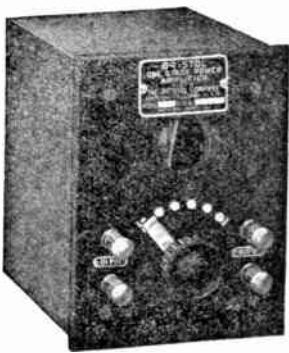
400 San Fernando Bldg., Los Angeles

12-2 P. M.
PACIFIC TIME

RADIO TIME TABLE

1- 3 Mountain Time
2- 4 Central Time
3- 5 Eastern Time

NAME OF STATION	CITY	Met.	CALL	SUN.	MON.	TUES.	WED.	THUR.	FRI.	SAT.					
				12 00-12 30	12 30-1 00	1 00-1 30	1 30-2 00	12 00-12 30	12 30-1 00	1 00-1 30	1 30-2 00	12 00-12 30	12 30-1 00	1 00-1 30	1 30-2 00
L. A. Times.....	Los Angeles	395	K H J			X	X								
L. A. Examiner.....	"	469	K W H			X	X								
Warner Bros.....	San Francisco		K L S	X	X										
Hale Bros.....	"	423	K P O			X	X								
Herrold Lab'y.....	San Jose		K Q W			X	X								
Modesto Herald.....	Modesto	252	K X D			X	X								
Guy Greason.....	Tacoma		K F E J		X	X									
Rhodes Co.....	Seattle	455	K D Z E		X	X									
Honolulu Star Bullhtn.....	Honolulu		K D Y X	X	X										
Honolulu Advertiser.....	Honolulu		K G U		X	X									
Reynolds Radio.....	Denver		K L Z			X									
Pyles Nichols.....	Denver	350			X										
News and Journal.....	Dallas	476	W F A A	X	X										
Palmer School.....	Davenport	484	W O C		X	X									
Star.....	Kansas City	411	W D A F			X	X								
News.....	Detroit	580	W W J		X	X									
Radio Corp. of America.....	New York	455	W J Z		X	X									
Herald.....	Calgar. y	430	C F A C		X										



Bristol One Stage Power Amplifier

NO C BATTERY REQUIRED

A unit that can be used as a third stage without howling. The usual objections against a third stage of audio frequency amplification are entirely eliminated by the use of the new "impact" circuit.

The Bristol One Stage Power Amplifier does not require separate "A" or "B" battery. It uses common tubes such as U. V. 201A, 216A and U. T. 2.

A remarkable achievement—a third stage audio that works RIGHT—install one today and give that distant station a chance to come in like the locals.

Ask your Dealer or send for Bulletin 3011-X

Give your loud speaker a treat

THE BRISTOL COMPANY

WATERBURY, CONN.

Pacific Coast Branch Office: 332 Rialto Building, San Francisco, California

Efficiency Counts!

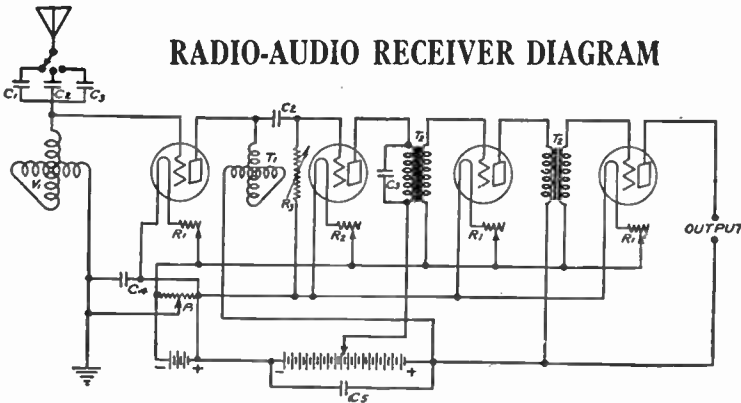
TUNED RADIO FREQUENCY WITH KC PARTS
ANNIHILATES DISTANCE

A set properly operated and constructed to the specifications below will regularly pick up broadcast to a distance of 1000 miles without any ground and with just a small loop or a piece of wire 15 to 20 feet long in the room. Engraved bakelite panel ready for mounting parts as below. Each \$ 8.25
Total cost of all parts for receiver, including panel..... 51.52
Accessories, including tubes, batteries, phones and antenna material.47.85
TOTAL COST OF MATERIAL..... 99.37

Send 25c to our nearest Factory Branch for Blueprint and Diagram
Giving Details of all Material.

ASK YOUR RADIO STORE ABOUT IT
THEN! BUILD ONE!

RADIO-AUDIO RECEIVER DIAGRAM



- | | |
|--|--|
| C1 .00015 Mfd. KC Fixed Condenser. | R1 KC 20 Ohm FR4 Rheostat. |
| C2 .00025 Mfd. KC Fixed Condenser. | R2 KC VR.2 Vernier Rheostat. |
| C3 .0005 Mfd. KC Fixed Condenser. | P1 KC 200 Ohm Potentiometer. |
| (The above fixed condensers may be replaced, if preferred, with a KC 23 plate variable condenser, in the antenna circuit.) | T1 KC Single Stage Radio Frequency Transformer. |
| C4 .001 Mfd. KC Fixed Condenser. | T2 KC Audio Frequency Amplifying Transformer. |
| C5 1/4 Mfd. Fixed Telephone Condenser. | V1 KC Widget Moulded Variometer. |
| | R3 Variable Grid Leak (The "Durham" is recommended.) |
- NOTE.—The values given are for the use of C-201-A tubes for amplifiers and a C-200 detector tube. By changing the detector rheostat to a 20 Ohm rheostat, UV-199 tubes may be used on three No. 6 dry cells for "A" battery.

Kilbourne & Clark Mfg. Co.

Head office & Works: Seattle

BRANCH OFFICES:

- Portland, 305 Larrabee St. Phone East 6156.
- San Francisco, 591 Mission St. Phone Sutter 40.
- Los Angeles, 1103 W. 10th St. Phone 581-002.
- New York City, 80 Washington St.

For 10 years we have built radio apparatus for ships, shore stations, U. S. Navy, amateur and experimental use.

A HIGH-GRADE COMPLETE LINE OF RADIO PARTS FOR EXCLUSIVE USERS



K. C. Your
Guarantee

4-6 P. M.
PACIFIC TIME

RADIO TIME TABLE

5- 7 Mountain Time
6- 8 Central Time
7- 9 Eastern Time

NAME OF STATION	CITY	Met.	CALL	SUN.		MON.		TUES.		WED.		THUR.		FRI.		SAT.	
				4 00-4 30	4 30-5 00	5 00-5 30	5 30-6 00	4 00-4 30	4 30-5 00	5 00-5 30	5 30-6 00	4 00-4 30	4 30-5 00	5 00-5 30	5 30-6 00	4 00-4 30	4 30-5 00
E. C. Anthony	Los Angeles	469	K F I	X	X												
L. A. Herald	"	469	Herald						X				X				
L. A. Examiner	"	469	Examiner					X	X		X		X		X		X
Hate Bros.	San Francisco	423	K P O			X	X	X	X	X	X	X	X	X	X	X	X
Oakland Tribune	Oakland		K L X			X		X				X					
S. F. Examiner	San Francisco	360	K U O				X	X		X	X		X		X		X
Maxwell Elec.	Berkeley		K R E														
Portable Wireless	Stockton		K W G			X	X	X	X	X	X	X	X	X	X	X	X
Gould	"		K J Q			X	X	X	X	X	X	X	X	X	X	X	X
Radio Den.	Santa Ana	268	K F A W			X		X		X		X		X		X	
Nelson Radio Co.	Phoenix	238	K F B C				X	X		X	X		X		X		X
Post-Intelligencer	Seattle	270	K F J C				X		X		X		X		X		X
Rhodes Co.	"	455	K D Z E														
First Presby. Church	"		K T W	X	X												
Northwest Radio	"	283	K J R				X	X		X	X		X	X		X	X
Mullens Elec.	Tacoma	252	K G B		X	X											
Guy Gresson	"		K F E J				X		X		X		X		X		X
Meier & Frank	Portland	360	K F E C		X	X	X	X	X	X	X	X	X	X	X	X	X
Hallack & Watson	"		K G G				X	X	X	X	X	X	X	X	X	X	X
Pyle & Nichols	Denver	680	K D Z Q		X	X	X	X	X		X		X		X		X
Star-Telegram	For ^o Worth	476	W B A P					X		X		X		X		X	
News and Journal	Dallas	476	W F A A				X	X	X	X	X	X	X	X	X	X	X
Southern Egr. Exp.	San Antonio		W O A I														
Palmer School	Davenport	484	W O C	X	X	X	X			X	X	X	X	X	X	X	X
Daily News-Fair	Chicago	438	W M A Q					X		X		X		X		X	
Free Press	Detroit	517	W C X	X	X	X	X	X	X	X	X	X	X	X	X	X	X
News	"	580	W W J	X	X	X	X	X	X	X	X	X	X	X	X	X	X
Star	Kansas City	415	W D A F	X	X	X	X	X	X	X	X	X	X	X	X	X	X
Tribune	Great Falls		K D Y S	X	X	X	X	X	X	X	X	X	X	X	X	X	X
Drake Hotel	Chicago	390	W D A P				X	X	X		X	X	X	X	X	X	X
Craley Wfg Co	Cincinnati	309	W L W				X	X	X		X	X	X	X	X	X	X
Radio Corp. of America	New York	455	W J Z			X	X	X	X	X	X	X	X	X	X	X	X
John Wanamaker	Philadelphia	509	W O O			X	X	X	X	X	X	X	X	X	X	X	X

It's a Pleasure and a Comfort

"to listen in"

With a TRIMM HEAD SET

or

TRIMM LOUD SPEAKER

Trimm Dependable.....\$ 5.00
Trimm Professional.....7.65
Trimm Standard Loud Speaker.....22.50

At All Dealers

CARL A. STONE CO.

538 San Fernando Bldg.

Los Angeles



Danes Listen In On U. S. Broadcasters

Enthusiastic radio amateurs in Denmark are always endeavoring to catch broadcasting from the United States, even though his country lies in a somewhat more unfavorable position to receive American radio messages than other European countries, Consul-General Letcher reports from Copenhagen.

Now that it has become dark during the American sending hours, however, conditions for picking up American stations are much better during the light summer evenings. Some of the Danish radio amateurs have lately made it a practice to "listen in" for Americans at about 3 or 4 o'clock in the morning. Recently several of these amateurs reported "getting" different broadcasting stations in the United States. One station mentioned particularly was "Schenectady" with the call signal W G Y. Orchestra music, soloists and speeches were plainly heard.

Interest in radio continues to increase in Denmark, the General says, and it is estimated that there are now approximately 10,000 radio amateurs in the country.

Keep Up to Date!

Subscribe to Radio Doings

\$2.00 a Year

Radio for Christmas

**[Select
NOW
for
Xmas]**

—There is no finer gift. All styles—all sizes—all prices. One quality—the best. Kennedy sets. Newbery service with every purchase.



New

872-914

Phone

6-8 P. M.
PACIFIC TIME

RADIO TIME TABLE

7-9 Mountain Time
8-10 Central Time
9-11 Eastern Time

NAME OF STATION	CITY	Met.	CALL	SUN.		MON.		TUES.		WED.		THUR.		FRI.		SAT.	
				6 00- 8 30	8 30- 7 00	7 00- 7 30	7 30- 8 00	6 00- 6 30	6 30- 7 00	7 00- 7 30	7 30- 8 00	6 00- 6 30	6 30- 7 00	7 00- 7 30	7 30- 8 00	6 00- 6 30	6 30- 7 00
Bible Institute	Los Angeles	360	K J S	X	X												
L. A. Times	"	395	K H J		X			X	X	X	X			X	X		X
E. C. Anthony	"	469	K F I					X	X	X	X			X	X		X
S. & Examiner	San Francisco	360	K U O			X	X	X	X			X	X			X	X
Maxwell Electric	Berkeley		K R E														
Tribune	Oakland	509	K L X				X		X		X						X
Western Radio	Oakland		K Z L														X
Kimball & Upson	Sacramento	283	K F B K			X	X	X		X		X		X		X	X
Modesto Herald	Modesto		K X D					X	X		X		X		X		X
Cal. Radio Lab'y	Hanford		K F B D			X	X	X		X		X		X		X	X
Fallon & Co.	Santa Barbara	360	K F H J							X	X				X	X	X
Radio Den	Santa Ana	288	K F A W			X	X	X									X
Dr. R. O. Shelton	San Diego	242	K F F A	X	X	X		X	X		X		X		X		X
Southern Elect.	"	244	K D P T				X		X		X						X
Dr. W. K. Azbill	"	278	K F B C			X											X
Smith-Hughes Co.	Phoenix		K D Y W	X		X		X		X		X		X		X	X
McArthur Bros.	"		K F A D				X	X		X		X		X		X	X
Univ. of Ariz.	Tucson		K F D H						X								X
Love Elect. Co.	Tacoma		K M O			X	X	X		X		X		X		X	X
Mullens Elect. Co.	"	252	K G B				X	X		X		X		X		X	X
Northwest Radio Service	Seattle	283	K J R				X	X		X		X		X		X	X
Excelsior Motor Cycle	"	280	K H Q						X								X
First Presby. Church	"		K T W			X											X
State Coll. of Wash.	Pullman	330	K F A E					X				X					X
Oregonian	Portland	492	K G W	X	X	X		X									X
Hallock & Watson	"		K G G		X	X		X									X
Meler & Frank	"	360	K F E C		X	X		X									X
Apple City Radio Club	Hood River	360	K O P			X				X							X
Adler's Music Store	Saker, Ore.		K F D A	X	X		X	X		X		X		X		X	X
Boise High School	Boise, Ida.	270	K F A U					X	X		X		X		X		X
Bunkerhill & Sullivan Co.	Wallace, Ida.		K F E Y			X		X			X		X		X		X
Telegram	Salt Lake	360	K D Y L			X	X	X	X	X	X	X	X	X	X	X	X
Deeriet News	"		K Z N			X	X	X	X	X	X	X	X	X	X	X	X
Reynold's Radio	Denver	360	K L Z		X	X	X	X	X	X	X	X	X	X	X	X	X
Western Radio	"	360	K F A F				X	X									X
Pyle & Nichols	"	360	K Z D Q		X	X											X
Sparks High School	Sparks, Nev.	226	K F F R														X
Star-Telegram	Fort Worth	476	W B A P			X		X		X		X		X		X	X
News and Journal	Dallas	475	W F A A			X	X	X	X	X	X	X	X	X	X	X	X
Palmer School	Davenport	484	W O C		X	X	X	X	X	X	X	X	X	X	X	X	X
Daily News-Fall	Chicago	448	W M A Q					X		X		X		X		X	X
Post Dispatch	St. Louis	546	K S D	X	X			X		X		X		X		X	X
Westinghouse	Chicago	448	K Y W			X	X	X	X	X	X	X	X	X	X	X	X
Sweeney School	Kansas City	411	W H B			X	X	X	X	X	X	X	X	X	X	X	X
Star	"	411	W D A F			X	X	X	X	X	X	X	X	X	X	X	X
Tribune	Great Falls		K D Y S			X	X	X	X	X	X	X	X	X	X	X	X
Drake Hotel	Chicago	390	W D A P		X	X											X
Cleveland Mfg. Co.	Cincinnati	305	W L W			X	X	X	X	X	X	X	X	X	X	X	X
Albertan Pub. Co.	Calgary, Can.	410	C H B C							X	X	X	X	X	X	X	X
Detroit Free Press	Detroit	517	W G X					X	X	X	X	X	X	X	X	X	X
Radio Corp. of America	New York	455	W J Z	X	X	X	X	X	X	X	X	X	X	X	X	X	X
John Wanmaker	Philadelphia	509	W O O			X	X	X	X	X	X	X	X	X	X	X	X
El Bren Tono	Mexico City		C Y B			X	X	X	X	X	X	X	X	X	X	X	X
El Universal	"		C Y L					X									X

The numeral next to name of station indicates the wave length. Where no number appears, the wave length is 360. The letter indicates that the station is on the air.

MURDOCK "SOLID" NO. 56 HEAD PHONES
Best at Any Price

PEERLESS INTERNATIONAL

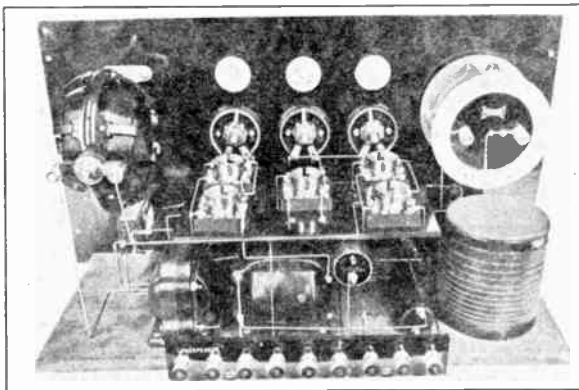
*Has bridged the Continent
San Francisco with Montreal, Canada, and
Also New York City*

The "Peerless International" is *essential* in remote places for clear, loud and distant reception.

The "Peerless International" Radio Frequency Receiver consists of two stages of Tuned Frequency Amplification, one Detector and two stages of Audio Frequency amplification (five Tubes)—combined in one beautiful cabinet of solid mahogany.

We Say the Peerless International Is the Best

*Every
Mother
has
the
best
Child*



*Every
Dealer
has
the
best
Radio
Set*

Price complete, installed, \$275

Make us prove by demonstration that our set is the best.

A Few of Our Satisfied Peerless International Owners

Senator James D. Phelan.

W. R. Chamberlain, President W. R. Chamberlain Steamship Co.

Milton H. S. Berg, President General Cigar Co.

John B. Blair, President J. J. Moore & Co., steamship owners.

W. F. Burrell, President Hooper Lumber Co.

P. E. Bowles, President American National Bank, San Francisco.

Theodore Breslauer, Attorney, San Francisco.

R. K. Ham, Retired Woolen Manufacturer.

Charles Dumphy, Mexican Mine Owner.

EXCLUSIVE DISTRIBUTORS for SOUTHERN CALIFORNIA

"Dealers and Salesmen Wanted"

"Quality"

ORIGINAL RADIO
BUGS

"Service"

1030 So. Figueroa St., Los Angeles

Phone 820-253

8-10 P. M.
PACIFIC TIME

RADIO TIME TABLE

9-11 Mountain Time
10-12 Central Time
11- 1 Eastern Time

NAME OF STATION	CITY	Met.	CALL	SUN.		MON.		TUES.		WED.		THUR.		FRI.		SAT.	
				8-10 P.	10-11 P.	8-10 P.	10-11 P.	8-10 P.	10-11 P.	8-10 P.	10-11 P.	8-10 P.	10-11 P.	8-10 P.	10-11 P.	8-10 P.	10-11 P.
L. A. Herald	Los Angeles	468	Herald	X	X	X	X										
Bible Institute	"	350	K J S	X	X	X	X										
L. A. Times	"	395	K H J	X	X	X	X										
L. A. Examiner	"	469	Examiner	X	X	X	X										
E. C. Anthony	"	468	K F I	X	X	X	X										
Hale Bros.	San Francisco	427	K P O	X	X	X	X	X	X	X	X	X	X	X	X	X	X
S. F. Examiner	"	340	K U O	X	X	X	X	X	X	X	X	X	X	X	X	X	X
Warner Bros	"	"	K L S														
Oakland Tribune	Oakland	509	K L X														
Maxwell Electric	Oakland	278	K R E			X	X	X	X		X	X	X	X	X	X	X
Cai, Radio Lab'y	Hanford	"	K F B D			X	X	X	X	X							
Modesto Herald	Modesto	252	K X D			X	X	X	X	X							
Portable Wireless	Stockton	"	K W G			X	X	X	X	X							
San Joaquin L. & P.	Fresno	273	K M J	X	X			X	X							X	X
Herrald Lab'y	San Jose	"	K A W							X	X	X	X				
Kimball-Unson	Sacramento	283	K F B K											X	X		
Abbott-Kinney Co.	Venice	258	K F A V			X	X	X	X								
Gould	Stockton	"	K J Q			X	X	X	X			X	X				
Fallon & Co.	Santa Barbara	261	K F H J							X	X				X	X	
Dr. W. K. Azbill	San Diego	278	K F B C	X	X	X	X					X	X	X			
Savoy Theatre	"	252	K D Y M	X	X	X	X			X	X	X	X		X	Y	X
Southern Elect. Co.	"	244	K D P T	X	X	X	X			X	X	X	X		X	X	X
Univ. of Ariz	Tucson	"	K F D H					X				X					
Nielson Radio Sup. Co.	Phoenix	238	K F B C											X	X	X	
Post-Intelligencer	Seattle	270	K F I			X	X	X	X	X	X	X	X	X	X	X	X
Northwest Radio Service	"	263	K J R			X	X	X	X	X	X	X	X	X	X	X	X
Excelsior Motor Co.	"	280	K H Q					X	X	X	X	X	X	X	X	X	X
Rhodes Co.	"	455	K D Z E			X	X	X	X		X	X	X	X	X	X	X
First Presby. Church	"	"	K T W	X	X	X	X										
Oregonian	Portland	482	K G W	X	X	X	X	X	X		X	X	X	X	X	X	X
Hallock & Watson	"	"	K G G							X	X					X	X
Stubbs Elect.	"	"	K G N														
Meier & Frank	"	360	K F E C										X	X			
Apple City Radio Club	Hood River	360	K Q P							X	X						
Pacific Radio Co.	Eugene, Ore.	275	K F A T			X	X			X	X					X	X
Boise High School	Boise, Ida.	270	K F A U			X	X			X	X			X	X		
Virgin Radio Service	Medford, Ore.	283	K F A Y			X	X	X	X		X	X	X	X	X	X	X
Bunke-hill & Sullivan Co.	Wallace, Ida.	"	K F E Y			X	X	X	X		X	X	X	X	X	X	X
Deseret News	Salt Lake City	"	K Z N	X	X			X		X		X		X		X	
Reynolds Radio Co.	Denver	"	K L Z	X	X												
Pyle & Nichols	Denver	360	K D Z Q			X	X			X	X		X	X		X	X
Winner Radio	Denver	360	K F E L			X	X							X	X		
Star Telegram	Fort Worth	476	"	X	X	X	X	X	X	X	X	X	X	X	X	X	X
Dallas News	Dallas, Tex.	475	W F A A	X	X			X	X	X	X	X	X	X	X	X	X
Palmer School	Davenport	484	"					X	X	X	X					X	
Post Dispatch	St. Louis	546	K S D				X	X	X	X	X	X	X	X	X	X	X
Star	Kansas City	411	W D A F	X	X	X	X	X	X	X	X	X	X	X	X	X	X
Woodmen of World	Omaha	527	W O A W			X	X	X	X								
Westinghouse	Chicago	347	K Y W														
Winner Radio	Denver	361	K F E L														
Orpheus Radio Co.	San Francisco	397	W I W					X	X			X	X	X			
Radin Corp. of America	New York	455	W J Z	X	X					X		X		X		X	
Herald	Calgary	430	C F A C	X	X												
F. I. U. versal	Mexico City	"	C Y L					X	X								
El Buen Tono	"	"	C Y									X	X				

MURDOCK "SOLID" NO. 56 HEAD PHONES
Best at Any Price

RADIO SUPPLIES

Most Complete Line on the Coast

Monodyne Tube Set, complete.....	\$27.50
Aeriola Sr. Tube Set.....	39.50
Sterling Voltmeter.....	2.75
Filko-stat.....	\$ 2.00
Workrite Variometer and Varicoupler, each.....	3.50
Erla Reflex Transformers.....	5.00
WD-11, WD-12 Tubes, large stock.....	6.50
UV-199 and C-299, 201-A, 301-A Tubes.....	6.50
Diodide Detector Tube with Socket.....	2.50
All American Transformers.....	4.25
Bristol Loud Speaker.....	22.50
Dictagrand Loud Speaker.....	24.50
Adapters and Sockets for UV-199 Tubes.....	60c up
Atlas Loud Speaker.....	25.00

Sleeper Monotrol

The Long Distance Set

Complete with Tubes, Batteries, Loud Speaker and Loop Aerial, \$197.50

No. 65 Federal Transformer.....	7.00
No. UV 1716 Transformer.....	8.50
Parts for Fada 5-tube Set.....	65.60
Sleeper Variometer and Varicoupler, each.....	6.00

SPECIAL SALE OF RADIO BOOKS

	Reg.	Sale
Wireless Telegraphy, by Bucher.....	\$2.25	\$1.15
Experimenters' Manual, by Bucher.....	2.25	1.15
Wireless Stations, by Edelman.....	3.00	1.50
Sleepers—Radio Hook-Ups.....	.75	.50
Radio Phone Receiving.....	1.50	1.00
Radio Instruments and Measurements.....	2.25	1.00
Radio for Everybody.....	1.50	.90

We have for Immediate Delivery

Erla Parts, Fada No. 160 Receiver, \$120.00; Neutrodyne Parts

Radiola II, Radiola IV, Radiola Grands

Gilfillan, Sleeper and Remler Parts

Acme Transformers

Amatran Transformers

Bradleystad and Bradley Leak, \$1.85

Full line Transmitting Parts

Citizens Call Books, 50c

Cabinets, built to order, \$3.50 up

Full line Hazelhurst Condensers

Roffy Transformers, \$8.50

MOTOR CAR SUPPLY CO.

RADIO DEPARTMENT

Open Evenings Till 9 P. M.
920 South Broadway

Telephone 826-063
Los Angeles, California

Write for

OUR NEW AND COMPLETE PRICE LIST

10-12 P. M.
PACIFIC TIME

RADIO TIME TABLE

11-1 Mountain Time
12-2 Central Time
1-3 Eastern Time

STATION	METERS	CITY	CALL	SUN.			MON.			TUES.			WED.			THUR.			FRI.			SAT.		
				10.00-10.30	10.30-11.00	11.00-11.30	10.00-10.30	10.30-11.00	11.00-11.30	10.00-10.30	10.30-11.00	11.00-11.30	10.00-10.30	10.30-11.00	11.00-11.30	10.00-10.30	10.30-11.00	11.00-11.30	10.00-10.30	10.30-11.00	11.00-11.30	10.00-10.30	10.30-11.00	11.00-11.30
L. A. Times.....	395	Los Angeles.....	K H J							X	X		X	X		X	X		X	X		X	X	
Post-Intelligencer.....	270	Seattle.....	K L J C																					
Earle C. Anthony.....	469	Los Angel.....	K F I	X	X		X	X		X	X		X	X		X	X		X	X		X	X	
Northwest Radio.....		Portland.....	K G N					X	X															
Oregonian.....	492	Portland.....	K G W							X	X		X	X		X	X		X	X		X	X	
W. W. Grant.....	440	Calgary.....	C F C N							X	X	X	X	X	X	X	X	X	X	X	X	X	X	X
*Hale Bros.....	423	San Francisco.....	K P O				X	X		X	X	X	X	X	X	X	X	X	X	X	X	X	X	X
Herald.....		Calgary.....	C F A C				X	X								X	X							
Pyle & Nichols.....	360	Denver.....	K D Z Q	X	X																			

*Note—Hale Bros., San Francisco, KPO, on Monday, Tuesday, Wednesday broadcast to 1 a. m.

The Ambassador Hotel

SUNDAY— 8:00 to 9:00 p. m. LYMAN'S ORCHESTRA.
Broadcast by Remote Control Over KFI
LOS ANGELES, CALIFORNIA

MONDAY— 10:00 to 11:00 p. m. LYMAN'S ORCHESTRA.

TUESDAY— 8:00 to 9:00 p. m. LYMAN'S ORCHESTRA.

WEDNESDAY— 11:00 to 12:00. LYMAN'S ORCHESTRA.

THURSDAY— 8:00 to 9:00 p. m. ROSENFELD'S ORCHESTRA.

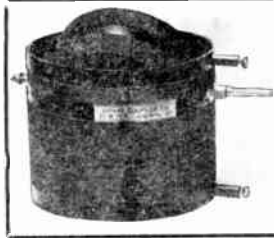
FRIDAY— 11:00 to 12:00. LYMAN'S ORCHESTRA.

SATURDAY— 11:00 to 12:00 p. m. ROSENFELD'S ORCHESTRA.

STOP AND READ THIS

If you're a keen radio fan, you want Long Distance
GET LONG DISTANCE WITH A COAST COUPLER

The whole trouble with radio set owners is, they cannot tune in distant stations. Of course they can't. They don't own a Coast Coupler. A Coast Coupler is cheap and gives you the thrill of hearing distant stations.



You've got to have a Coast Coupler to get long distance. With one tube and this Coupler you can hear Detroit, Chicago, Calgary, Canada, most any station you want. Isn't that satisfactory?

Special hook-up given free with each Coast Coupler

Don't be foolish and spend your money recklessly. Buy our Coast Coupler and hear distant programs on your set.

Don't Delay—Small Stock Left—Mail \$5.00 with This Coupon

COAST COUPLER COMPANY

Manufacturers and Dealers

245 EAST SEVENTH ST.

LONG BEACH, CALIF.

COAST COUPLER CO.,

245 East Seventh St., Long Beach, Calif.

Enclosed find five dollars, for which send me one Coast Coupler.

Name

Address..... 11-3



A New Paragon Receiver

The new PARAGON is the last word in sensitivity and selectivity. The superiority of this type over all other classes of receiving equipment has been thoroughly proved by the long list of distance records which it holds. Included in these records are the reception of the first transcontinental amateur message, the reception of the first trans-Atlantic message, and the unbroken communication which it has maintained with the McMillan Expedition frozen in above the Arctic Circle. (See December Radio News, page 707.)

All cabinet work is of mahogany with a brown mahogany finish. All metal parts showing, inside as well as outside of the cabinet, are nickel-plated. 98% of the wiring is invisible. Compartment for dry cells. Yes, use any tubes. The whole outfit is compact, neat and solidly built.

Demonstrated and sold by

BARROW-LEWIS. 209 North Main St., Santa Ana
 RANDALL & KESTER. . . 427 N. Sycamore St., Santa Ana
 WALTER CONGDON San Juan Capistrano
 R. B. SMITH. 2051 East Third St., Long Beach

Dealers, get our Exclusive Proposition

Exclusive wholesale distributors for Southern California

WALTER W. BIDDICK, Inc.

1316 So. Grand Ave.
 Los Angeles

116 E. Fifth St.
 Santa Ana

PARAGON

Reg. U. S. Pat. Off.

RADIO PRODUCTS

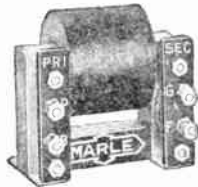
MARLE Transformers

Audio and Radio Frequency



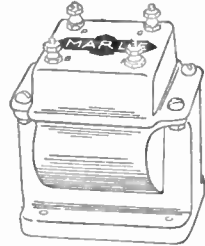
Type A4
3 3/4 to 1 Ratio
\$3.75 Each

Type A6
5 to 1 Ratio
\$4.25 Each



Type R1 and R2
\$4.00 Each
For 1st Stage Radio
Frequency Amplifier

Type R2 for 2nd Stage
Also adaptable to all
Reflex Receivers



Type A7
3 3/4 to 1 Ratio
\$4.50 Each

Type A8
5 to 1 Ratio
\$5.00 Each

Give greatest amount of amplification without howling or distortion. Known as the "straight curve" transformers. The highest grade material and workmanship assure efficiency and quality. The large number in use by thousands of radio fans is the real proof of the superiority of Marle Transformers.

Each Transformer is guaranteed by the manufacturer.

Authorized Jobbers

COOK NICHOLS CO. WALTER W. BIDDICK, Inc.

411 S. San Pedro St.
Los Angeles

1316 S. Grand Ave.
Los Angeles
116 E. Fifth St.
Santa Ana

PAUL SUTCLIFFE

Pacific Coast Sales Representative

MARLE ENGINEERING CO.

400 San Fernando Bldg.
Los Angeles

Of Course You Are Interested
IN
REFLEX CIRCUITS

REFLEX is our specialty — have you tried the new

HARKNESS
Single Tube REFLEX?

It embodies turned radio frequency—can be built for less than any other set that will operate a loud speaker—is extremely selective and employs only two controls—one tube does the work, therefore dry cells can be used.

Complete parts for the HARKNESS single tube reflex (less tube, batteries and cabinet), \$17.00.

COILS T-1 and T-2, wound with silk wire according to HARKNESS specifications. \$2.50 per set

“PEARLCO” REFLEX RECEIVER

The Best Two Tube Reflex

Complete parts (less tubes, batteries and cabinet), \$36.50

ERLA REFLEX. . We stock the genuine parts for the one tube or three tube circuit.

“Make This a Radio Christmas”

MAIL ORDER SERVICE ANYWHERE

**Yale Radio
Electric Company**

“PEARLCO” Distributors for California”

Phone Vermont 8973

4816-48-18 So. Vermont Ave.

Los Angeles, Calif.

Satisfactory Discounts to Dealers

K H J—Los Angeles Times—395 Meters

Times Building, First and Broadway, Los Angeles. Owned and Operated by Los Angeles Times.
Phone Metropolitan 0700

* WEEK COMMENCING DECEMBER 2ND
(Subject to Change)

SUNDAY—

- 10:00 a. m. Week Commencing December 2nd, 1923
Sermon by Dr. H. C. Culbertson, pastor of the Plymouth Congregational Church.
- 10:30 to 12:30 p. m. Organ recital and entire religious service from First Methodist Episcopal Church. Rev. Elmer E. Helms, pastor. Arthur Blakeley, Organist.
- 7:30 to 7:30 p. m. Organ recital from First Methodist Episcopal Church; Arthur Blakeley, organist.
- 8:00 to 10:30 p. m. Grace Sen'or Brearley, pianist; Caryl Marshall, soprano; Dr. J. W. Wallace, tenor; Frederick McMurray, viola. Lecture, "Seeing America," by Dr. C. Stuart Hutchinson.

MONDAY—

- 12:30 to 1:15 p. m. News Items. Music.
- 2:30 to 3:30 p. m. Silent.
- 6:45 to 7:30 p. m. Silent.
- 8:00 to 10:00 p. m. Silent.

TUESDAY—

- 12:30 to 1:15 p. m. News Items. Music.
- 2:30 to 3:30 p. m. Matinee musicale presenting Mrs. Ray Fisher, contralto.
- 6:45 to 7:30 p. m. The weekly v. s. t. of the "Sandman."
- 8:00 to 10:00 p. m. Program presented by "Sylinders of Sunshine," the Three Selbys, through the courtesy of G. Allison Phelps, of the Suburban Estates Company. Rev. Thomas Lutman lecture, "Are Thoughts Things?"
- 10:00 to 12:00 p. m. Broadcasting Art Hickman's Orchestra, by line telephony from the Los Angeles Biltmore Hotel.

WEDNESDAY—

- 12:30 to 1:15 p. m. News Items. Music.
- 2:30 to 3:30 p. m. Matinee musical presenting Cecilian Trio.
- 6:45 to 7:30 p. m. Children's program presented by Vera Leavitt Owens, soprano. Priscilla Moran, screen juvenile. Mrs. Rufus Wagner will tell Bed-time Story.
- 8:00 to 10:00 p. m. Program presented through the courtesy of Victor Schertzinger, motion picture director, and composer of "Marcheta."
- 10:00 to 12:00 p. m. Broadcasting Art Hickman's Orchestra, by line telephony from the Los Angeles Biltmore Hotel.

THURSDAY—

- 12:30 to 1:15 p. m. News Items. Music.
- 2:30 to 3:30 p. m. Mat'nee musicale.
- 6:45 to 7:30 p. m. Children's program presenting John T. Brown, harmonica, and Dickie Brandon, 4 years of age.
- 8:00 to 10:00 p. m. Program featuring Ada Androva, dramatic soprano.
- 10:00 to 12:00 p. m. Broadcasting Art Hickman's Orchestra, by line telephony from the Los Angeles Biltmore Hotel.

FRIDAY—

- 12:30 to 1:15 p. m. News Items. Music.
- 2:30 to 3:30 p. m. Mat'nee musicale.
- 6:45 to 7:00 p. m. Children's program presenting Richard Headrick, screen juvenile.
- 7:00 to 7:30 p. m. Organ recital from First Methodist Church.
- 8:00 to 10:00 p. m. Program presented by Polytechnic High Girls' Glee Club.
- 10:00 to 12:00 p. m. Broadcasting Art Hickman's Orchestra, by line telephony from the Los Angeles Biltmore Hotel.

SATURDAY—

- 12:30 to 1:15 p. m. Program presented by piano pupils of Alice McComas Gray.
- 6:45 to 7:30 p. m. Children's program.
- 8:00 to 10:00 p. m. Program, Woman's Choral Club of Pasadena.
- 10:00 to 12:00 p. m. Broadcasting Art Hickman's Orchestra, by line telephony from the Los Angeles Biltmore Hotel.

"THE RADIO SEASON"

If there be such a thing, is surely at hand now. With snappy evenings and wonderful programs in the air, do not delay installing a modern Radio Corporation set. Possibly we can use your old set and give you a mighty fair exchange. Come in and see us.

COAST RADIO CO., INC.

Phone El Monte 110

Radync

Found in America's Finest Homes

RADIO CONCERT EQUIPMENT CO.

WHOLESALE ONLY

946 So. Flower St.

Los Angeles

Phone 824-353

K F I, Radio Central Station of Earle C. Anthony, Inc.

Packard Building, 1000 South Hope St., Los Angeles, California.
Class "A" 500 Watt Western Electric Station, Operating on 469 Meters.

Remote Control Stations:

Los Angeles Evening Herald	5:00 to 5:30 p. m. daily except Sunday. 8:00 to 9:00 Monday, Wednesday, Friday.
Los Angeles Examiner	5:30 to 6:00 p. m. daily except Sunday. 9:00 to 10:00 p. m. daily.
Hotel Ambassador	8:00 to 9:00 p. m. Sunday, Tuesday, Thursday. 10:00 to 11:00 p. m. Monday. 11:00 to 12:00 p. m. Wednesday, Friday, Saturday.

Program Detail Anthony Studio (Pacific Time, Dec. 9th to 15th)

(Does not include detail of remote control stations)

(Subject to change)

SUNDAY—

10:00 to 10:45 a. m.	Service by L. A. Church Federation.
4:00 to 5:00 p. m.	Service by Federated Church Musicians.
6:45 to 7:30 p. m.	Instrumental program.
10:00 to 11:00 p. m.	Theron Bennett's Orchestra.

MONDAY—

6:45 to 7:30 p. m.	Coral Atkins.
--------------------	---------------

TUESDAY—

6:45 to 7:30 p. m.	Mrs. Emma M. Bartlett, chairman Public School Music, State Federation, will furnish musical program.
10:00 to 11:00 p. m.	Meany & Nehls instrumental and vocal concert.

WEDNESDAY—

6:45 to 7:30 p. m.	Nick Harris Detective Stories.
10:00 to 11:00 p. m.	Instrumental Music.

THURSDAY—

6:45 to 7:30 p. m.	Courtesy of Y. M. C. A.
10:00 to 11:00 p. m.	Vocal and instrumental concert.

FRIDAY—

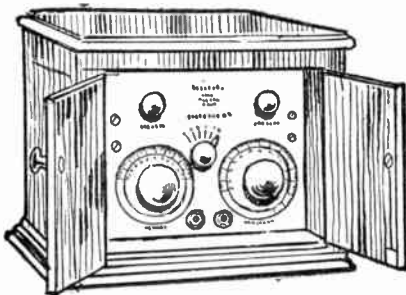
6:45 to 7:30 p. m.	Wa-Wan Juniors.
10:00 to 11:00 p. m.	Madelyn Hardy.

SATURDAY—

6:45 to 7:30 p. m.	Instrumental Music.
8:00 to 9:00 p. m.	Orchestra.
10:00 to 11:00 p. m.	Dance music.
William K. Gibbs, program announcer.	

Easy to Move About!

THIS REFLEX RADIO SET,
especially built for us, plays
anywhere. Efficient to the last
degree and fully guaranteed.
Come in and hear it.



Wiley B. Allen Co.

Mason & Humlin Pianos

416-418 So. Broadway

Examiner Radio Studio

Phone Metropolitan 4000

These programs are rendered in the Examiner Studio and broadcasted by remote control over the leased wire of the Southern California Telephone Company from Radio Central Station KFI.

SUNDAY, DECEMBER 2—

9:00 to 10:00 p. m. Vincent Rose and Jackie Taylor's famous orchestra, featuring Vincent Rose song hits.

MONDAY—

5:30 to 6:00 p. m. Dr. Ralph L. Power, lecture on Education.

9:00 to 10:00 p. m. The Peach Edition Club, featuring: Harry McCoy, famous motion picture comedian; Frank Braidwood, the cowboy baritone; Charlie Melson, of Irving Berlin, Inc.; Harry Coe, of Leo Feist; Madelyn Hardy, the "Radio Girl," and the Hollywood Californians, from Hollywood.

TUESDAY—

9:00 to 10:00 p. m. Program through the courtesy of Sid Grauman, of the Grauman Theaters.

WEDNESDAY—

9:00 to 10:00 p. m. The Examiner Radio Club, popular numbers.

THURSDAY—

9:00 to 10:00 p. m. Pallma and his Band Supreme from Tally's Broadway Theater. Program through the courtesy of Lester's Radio Shoppe.

FRIDAY—

9:00 to 10:00 p. m. Bohemian Nite. Program presented by Finn Haakon Frolic, the noted sculptor.

SATURDAY—

9:00 to 10:00 p. m. Palos Verdes Concert under the direction of Jean De Chauvenet.

SUNDAY—

9:00 to 10:00 p. m. SPECIAL CONCERT.

MURDOCK "SOLID" NO. 56 HEAD PHONES

Best at Any Price

RADIO

SATURDAY SPECIALS

\$40.00 Loud Speakers, just like West. Electric.....	\$24.75
\$15.00 Loud Speakers.....	6.50
\$ 5.00 45-volt B. Bat.....	3.50
\$ 6.50 3-volt Tubes.....	4.00
\$10.00 French 4000 Ohm Phones.....	4.00
\$12.00 Nickle Double Horns.....	5.00

FOR XMAS

\$135.00 Armstrong Reg. 3-Tube Set.....	\$75.00
\$100.00 2-tube, complete with horn.....	75.00
500-mile Crystal Set, complete.....	25.00

Terms. Open Evenings and Sunday, 9 to 12. Terms

140 South
Spring St.

LESTER RADIO SHOP

Metro.
4332

Los Angeles

Evening Herald Radiophone

Owned and Operated by the Evening Herald
Broadcast by Remote Control from Radio Central Station KFI
Telephone Metropolitan 5100

5:00 to 5:30 p. m. Evening Herald News Bulletin covering the World's News Events up to 5:00 p. m. Closing market quotations by leased wire.

MONDAY, DECEMBER 3—
8:00 to 9:00 p. m. Cook's Dance Orchestra; Mary Nichols Burch, Winifred Mansfield, singers.

WEDNESDAY, DECEMBER 5—
8:00 to 9:00 p. m. Concert under direction of Caroline Weeks-Helms of Barker School of Music.

FRIDAY, DECEMBER 7—
8 00 to 9:00 p. m. Barker's Metropolitan Orchestra. Dot Street, vocalist.

“Half the head phones *in use* are Murdock”

KNX—The Electric Lighting Supply Co. 360 Meters

CALIFORNIA THEATRE RADIOPHONE

Owned and operated by Electric Lighting Supply Co., 216 W. Third St., Los Angeles, California

MONDAY—
3:30 p. m. California Theatre Orchestra, Carli D. Elinor, Director.

WEDNESDAY—
3:30 p. m. California Theatre Orchestra, Carli D. Elinor, Director.

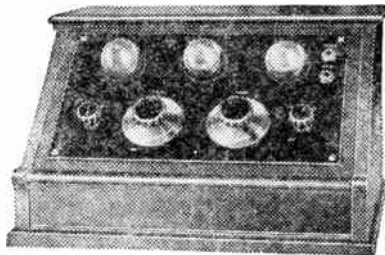
FRIDAY—
3:30 p. m. California Theatre Orchestra, Carli D. Elinor, Director.

K E N N E D Y

The Royalty of Radio



Kennedy Model V



Complete with Loud Speaker, \$150

Phone us for Demonstration

Prest & Dean Radio Electric Co.

742 E. 4th St.

Long Beach, Cal.

K J S—Bible Institute Radiophone—360 Meters

Owned and Operated by Bible Institute of Los Angeles, Inc.
M. E. Carrier, Manager Radio Department
Telephone Metropolitan 6701

SUNDAY, DECEMBER 2—

11:30 a. m. Dr. R. A. Torrey, sermon. The Harmony Quartet. Mr. C. M. Brooks, baritone, Gospel solo.
6:00 to 6:45 p. m. Rev. Wm. H. Pike, Scripture and Sermon. Miss Paulene Plummer, organist. Mr. John Wiens, baritone.
8:00 p. m. Dr. R. A. Torrey, sermon. Mrs. Irvin S. Fallis, soprano. The Harmony Quartet.

TUESDAY, DECEMBER 4—

8:00 to 9:00 p. m. Organ recital. Mr. L. E. Woody, tenor.

THURSDAY, DEC. 6—

8:00 to 9:00 p. m. Organ recital by Mr. Otto T. Hirschler, assisted by Mrs. Irene Gay, soprano.

KFAE—State College of Washington—330 Meters

(State College of Washington, Pullman, Wash. Miss Alice L. Webb, News Editor.)

MONDAY, DECEMBER 3, 7:30-8:30—

Storing Your Car for Winter, by Harry Nash, Engineering Department.
Musical Numbers.
Pruning in Cold Weather, by F. L. Overley, Horticultural Department.
Chemistry Talk.
Baritone Solos by Paul Christen, Butte, Mont.
New Helps in Education, by Dr. C. W. Stone, Education Department.
Siamese Twins in Agriculture, by B. A. Slocum, Bee Specialist.

WEDNESDAY, DECEMBER 5, 7:30-8:30—

How to Choose a Vocation, by Dr. D. W. Hamilton, Education Department.
Curing and Smoking the Winter Supply of Ham and Bacon, by R. T. Smith, Animal Husbandry Department.
Musical Numbers.
The Christmas Dinner, by Miss Mary Sutherland, Nutrition Specialist.
Music by the Conner Stringed Trio; Misses Catherine and Claribel Conner of Spokane on Viola and Cello, and Miss Ruth Coates, Spokane, Violin.

FRIDAY, DECEMBER 7, 7:30-8:30—

Educational Talk on Soils.
Talk on the New Books, Miss Alice L. Webb, Editor General Publications.
Musical Numbers.
Farm Prices, by R. N. Miller, Farm Management Demonstrator.

RADIO SPECIALISTS

Phone 826-823 736 South Olive Street, Los Angeles, California

We Build, Repair Neutrodyne, Hetrodyne, Reflex, Regenerative and
Crystal Sets

ASK YOUR DEALER OR JOBBER ABOUT US

X GIVE
A
RADIO
FOR
MAS



A Small
Deposit Will
Hold Any Set
For You
Until
Christmas

709 N. Western Ave. (Cor. Melrose & Western), Hollywood, Calif.

K P O—Hale Bros. Radiophone—423 Meters

San Francisco, California—Class "B" Station
E. C. MORRISON, Director of the Station
ADA MORGAN O'BRIEN, Program Manager

Daily, except Saturday and Sunday, 1 to 2 and 4:30 to 5:30 p. m., Fairmont Hotel.
Saturday, 1 to 2 p. m., Fairmont; 3:30 to 5:30 p. m., Palace Hotel, Tea Dansants.
Sunday church services by Church Federation of San Francisco, 11 a. m. to noon.

EVENING PROGRAMS

SUNDAY—

8:30 to 10:00 p. m. Rudy Seiger's Fairmont Hotel Concert Orchestra.

MONDAY—

8:00 to 10:00 p. m. Studio Program.
11 p. m. to 1 a. m. Palace Hotel Dance.
Organ between 9 and 10 p. m.

TUESDAY—

8:00 to 10:00 p. m. Studio Program.
11 p. m. to 1 a. m. Palace Hotel Dance.

WEDNESDAY—

8 p. m. to 1 a. m. Max Bradfield's Palace Hotel Dance Orchestra.

THURSDAY—

8:00 to 9:00 p. m. Studio Program. Pipe Organ Recital.
9:00 to 11:00 p. m. Palace Hotel Dance.

SATURDAY—

8:00 p. m. to midnight. Special Request Program. Art Weidner's Fairmont Hotel Dance Orchestra.

KLX—Oakland Tribune Radiophone—509 Meters

Oakland, California—Class B—500 Watts
7:00 to 7:30 p. m. Daily. Except Sunday

TUESDAY—

8:00 to 10:00 p. m. Studio Program.

WEDNESDAY—

8:00 to 8:30 p. m. Program by University of California.

THURSDAY—

8:00 to 10:00 p. m. Program by University of California.

FRIDAY—

8:00 to 10:00 p. m. Studio Program.

“Half the head phones *in use* are Murdock”

SLEEPER MONOTROL

A Grimes Inverse Duplex Set

List Price \$115.00

COOK-NICHOLS CO.

411 So. San Pedro St.
Los Angeles, Calif.

WHOLESALE ONLY

PHONE 871-350

K G W—The Morning Oregonian—492 Meters

PORTLAND, OREGON

PROGRAM FOR WEEK DECEMBER 2 TO DECEMBER 8

SUNDAY—

- 6:00 p. m. Church Services, provided by First Presbyterian Church.
 7:00 p. m. George Olsen's Metropolitan Orchestra in Dinner Program of Concert Music from Portland Hotel; Piano Solos by Beatrice Klapper.

MONDAY—

- 11:30 a. m. Weather Forecast.
 3:30 p. m. Literary Program by Portland Library Association.
 7:30 p. m. Weather Forecast and Market Reports.
 8:00 p. m. Franklin High School Dramatic Department presents "Trial by Jury."

TUESDAY—

- 11:30 a. m. Weather Forecast.
 3:30 p. m. Talk by Jeannette P. Cramer, Home Economics Editor of The Oregonian.
 7:30 p. m. Weather Forecast and Market Reports.
 8:00 p. m. Talk for Farmers, provided under direction of Paul V. Maris, Extension Director Oregon Agricultural College.
 10:00 p. m. Dance Music by George Olsen's Metropolitan Orchestra of the Portland Hotel.

WEDNESDAY—

- 11:30 a. m. Weather Forecast.
 3:30 p. m. Children's Program; Music by Children and Story by Aunt Nell.
 7:30 p. m. Weather Forecast and Market Reports.
 8:00 p. m. Concert by Rybka String Orchestra.
 9:00 p. m. Business Talk by James Albert, Local Representative of Alexander Hamilton Institute.
 10:00 p. m. Dance Music by George Olsen's Metropolitan Orchestra of the Portland Hotel; Intermission Solos.

THURSDAY—

- 11:30 a. m. Weather Forecast.
 7:30 p. m. Weather Forecast and Market Reports.
 8:00 p. m. Dramatic Program by Red Lantern Players.
 10:00 p. m. Dance Music by George Olsen's Metropolitan Orchestra of the Portland Hotel; Intermission Solos.

FRIDAY—

- 11:30 a. m. Weather Forecast.
 3:30 p. m. Jessie D. McComb, Home Economics Department, Oregon Agricultural College.
 7:30 p. m. Weather Forecast and Market Reports.
 8:15 p. m. George Olsen's Metropolitan Orchestra of the Portland Hotel in Studio Program.
 9:00 p. m. Lecture on "Oregon Resources" by Alfred L. Lomax, Professor of Foreign Trade of University of Oregon.
 10:30 p. m. Hoot Owls with Pantages Frolic.

SATURDAY—

- 11:30 a. m. Weather Forecast.
 3:30 p. m. Children's Program; Music by Piano Pupils of Lucille Cummings; Story by Aunt Nell.
 7:30 p. m. Weather Forecast and Market Reports.
 10:00 p. m. Dance Music by George Olsen's Metropolitan Orchestra of the Portland Hotel.

**Brandes Table Talker, \$10.00****Exceptional Headsets, \$3.50**

22½ volt "B" Batteries, \$1.20

45 volt "B" Batteries, \$3.50

Single or double phone cords, 35c; Litz wire, No. 38, 20 strand, 4c a foot. Magnet wire, all sizes, all kinds. Unassembled, 2-foot loop, 85c. Rubber ear cushions, 50c pair.

The Radio Stores Company
 348 South Spring Near Fourth

W F A A—Dallas News-Journal—475 Meters

(PACIFIC TIME) DALLAS, TEXAS

Station WFAA (working for all alike), 476 meters (630 kilocycles).

MONDAY—

10:30 to 11:00 a. m. Address—Judge E. B. Muse, "The Place of Amusements."
 6:30 to 7:30 p. m. Tell Me This Club in varied recital demonstrating the work for young people done by The Dallas Journal.

TUESDAY—

10:30 to 11:00 a. m. Address—DeWitt McMurray, editor Semi-Weekly Farm News, in a medley of humor, pathos and wisdom.
 6:30 to 7:30 p. m. Musical recital by the Mozart Choral Club, Earl D. Behrends, directing.
 9:00 to 10:00 p. m. Orchestral music and violin choir by A. A. DeMond and assisting musicians.

WEDNESDAY—

10:30 to 11:00 a. m. Address by Oscar O. Touchstone, attorney, and music by the "Red Head Gal." Station will be silent for remainder of the day.

THURSDAY—

10:30 to 11:00 a. m. Address—Ray Morrison, Southern Methodist University, on "Education and Athletics."
 6:30 to 7:30 p. m. Mrs. Albert Smith, soprano, and assisting musical artists in recital.

FRIDAY—

10:30 to 11:00 a. m. Address—Dr. Robert Stewart Hyer, Southern Methodist University, on the Sunday school lesson, "Outreach of the Early Church."
 6:30 to 7:30 p. m. Band recital by the Western Union Telegraph Company's Boys' Band, in popular music.

SATURDAY—

10:30 to 11:00 a. m. J. P. Comer, Southern Methodist University, in "Literary Lines."
 6:30 to 7:30 p. m. Orchestra from the North Texas State Teachers' College, Denton, Texas.
 9:00 to 10:00 p. m. Mrs. May Zigenbein, pianist.

SUNDAY—

4:00 to 5:00 p. m. Radio Bible Class, Dr. William M. Anderson, Jr., pastor of the First Presbyterian Church, teacher; half-hour Bible study and half-hour Gospel song.
 7:30 to 8:00 p. m. Sacred song recital and brief address.
 8:00 to 9:00 p. m. Jimmy Allen's Orchestra, Southern Methodist University boys, in popular dance music recital.

DO YOUR CHRISTMAS SHOPPING EARLY

Don't forget that promise you made yourself that you were going to do your Christmas shopping early this year. There are so many arguments in favor of it and none against.

"Half the head phones in use are Murdock"

Remake a Better Mousetrap

Although we are not on the busiest street in town, our orders for sets are becoming more numerous.

See samples of our work if considering building a set.

Southern California Radio Company

Phone Beason 7439

B. D. ALBIN
 1302 South Hoover Street

F. C. ALBIN
 Los Angeles, California

WBAP—Fort Worth Star-Telegram—476 Meters

(PACIFIC TIME) FORT WORTH, TEXAS

(Class B Station)—750 Watts—476 Meters

SUNDAY, DECEMBER 2—

- 9:00 a. m. to 10:15 a. m. Complete services of the First Methodist Church, Rev. J. W. Bergin, D. D., pastor; Will Foster, Organist.
 2:00 to 3:00 p. m. Organ concert from the Rialto Theater; Margaret Agnew White, feature artist. (E. L. O. announcing.)
 3:00 to 4:00 p. m. Vesper concert. (E. L. O. announcing.)

MONDAY, DECEMBER 3—

- 5:30 to 6:30 p. m. Concert by the Palo Pinto Square Dance Orchestra of Palo Pinto, Texas. (E. L. O. announcing.)
 7:30 to 8:45 a. m. Concert by the Victory Men's Bible Class Orchestra of Abilene, Texas. (The Hired Hand announcing.)

TUESDAY, DECEMBER 4—

- 5:30 to 6:30 p. m. Concert by Henry Blewett's Orchestra of Denton, Texas. (E. L. O. announcing.)
 7:30 to 8:45 p. m. Concert by the Municipal Band of Alvarado, Texas. (G. C. A. announcing.)

WEDNESDAY, DECEMBER 5—

- 5:30 to 6:30 p. m. Concert arranged by Pearl Calhoun Davis, soprano soloist, presenting a group of pupil artists. (E. L. O. announcing.)
 7:30 to 8:45 p. m. Concert by George Freeman's Sooner Serenaders, the Texas Hotel Orchestra. (The Hired Hand announcing.)

THURSDAY, DECEMBER 6—

- 5:30 to 6:30 p. m. Concert by the Epworth League of Denton, Texas. (E. L. O. announcing.)
 9:30 to 10:45 p. m. Concert arranged by the Fort Worth Euterpean Club. (G. C. A. announcing.)

FRIDAY, DECEMBER 7—

- 5:30 to 6:30 p. m. Concert by the Texas Christian University, arranged by Prof. H. D. Guel'ck, head of the School of Mus'c. (E. L. O. announcing.)
 7:30 to 8:45 p. m. Concert by the orchestra of the Senior High School, Miss Irma Poin-dexter, director. (G. C. A. announcing.)

SATURDAY, DECEMBER 8—

- 5:00 to 5:30 p. m. Review of the Interdenominational Sunday School lesson and Radio Bible Class, conducted by Mrs. W. F. Barnum.

"IN THE SHADOWS"

a new book of thirty thrilling detective stories by
 Detective Nick Harris

Proving

WHY CRIME DOESN'T PAY

Many of these stories have been told to listeners of "Radio Land" by Mr. Harris over Anthony's KF1 every Wednesday night. You'll like them. A fine Christmas present for your boy or girl.

Send \$2.00 today to Mail Order Department,

NICK HARRIS DETECTIVES

900 Pantages Bldg.

Los Angeles



Nick Harris

Make It a Radio Christmas!

A complete set \$14.25

There is nothing in the world today, that money can buy, that will bring as much happiness to the home as this inexpensive radio set.

- Costs nothing to operate.
- Can be installed anywhere.
- Come in for a demonstration.

CENTRAL RADIO COMPANY

618-87—710 Delta Bldg.

426 S. Spring St., Los Angeles

WOC—Palmer School of Chiropractic—484 Meters

Davenport, Iowa—Pacific Time

SUNDAY, DECEMBER 2—

- 11:30 a. m. Orchestra Concert (1 hour). Patriotic and sacred numbers by the P. S. C. Orchestra.
- 5:00 p. m. Organ recital (1½ hours), Erwin Swindell, organist.
- 5:30 p. m. Sport news.
- 6:00 p. m. Church service: Rev. Emil F. Bergren, circulation manager, Augustana Book Concern, Rock Island, Ill. (Musical numbers to be announced.)
- 9:00 p. m. Musical program (2 hours), Erwin Swindell, musical director. P. S. C. Orchestra. Gerald M. Barrow, director. Frank Deegen, violinist: "Meditation," from "Thais," "Perfect Day," "Dream of the Shepherdess," "Berceuse." Mrs. Edward Applequist, soprano.

MONDAY, DECEMBER 3—

- 6:00 p. m. Musical program (1 hour), Erwin Swindell, musical director. Maysie Sherman-Scherer, soprano; Mrs. Otto Klockau, contralto; Arthur Albrecht, pianist.

TUESDAY, DECEMBER 4—

(No broadcast'ng after 6 p. m. Tuesday—Silent night for WOC.)

WEDNESDAY, DECEMBER 5—

- 6:00 p. m. Organ recital. Erwin Swindell, organist. Mrs. Fred Warner, soprano: "Walters of Minnetonka," "Marcheta," "Morning Wind," "Maytime."
- 6:00 p. m. Musical program (1 hour), Erwin Swindell, musical director. Program by the Tri-City Harmony Colored Quartet and the All-Star Colored Male Quartet, of Rock Island, Ill.

THURSDAY, DECEMBER 6—

- 6:00 p. m. Musical program (1 hour). P. S. C. Orchestra, Gerald M. Barrow, director. Featuring V. B. Rochte, baritone soloist.

FRIDAY, DECEMBER 7—

- 5:00 p. m. Educational lecture: "Is the Retail Dealer a Necessity or a Nuisance?" by J. W. Gamble, of the Standard Chemical Mfg. Co., Omaha, Neb.
- 6:00 p. m. Musical program (1 hour), Erwin Swindell, musical director. Program furnished through courtesy of the Kennedy Music Co., of Dixon, Ill.

SATURDAY, DECEMBER 8—

- 7:00 p. m. Orchestra program (1 hour). P. S. C. Orchestra, Gerald M. Barrow, director. Featuring: "Red Hot Blues," "Hawaiiana," "Beautiful Rose," "The Old-Fashioned Homestead," "Sun Kiss Rose," "She's Got Another Daddy." Popular selections released through the National Association of Broadcasters, of which WOC is a member. V. B. Rochte, baritone soloist.

MURDOCK "SOLID" NO. 56 HEAD PHONES

Best at Any Price

BURROUGHS RADIO CO.

4615 MONETA AVENUE

Phone 2983-18 and representative will call

Sets from \$25.00 up All sets sold on easy terms

TUBES REPAIRED

We repair vacuum tubes and guarantee them to work like new. Money refunded if not satisfied

UV 202—UV 301—A. P.'s and	201A—301A	\$3.50
De Forest	C 300 and UV 200	2.75
WD 11—WD 12	UV 199	3.50

Send your tubes direct to the only laboratory in the West

Broken Glass Shells Replaced—No extra charge

AL. D. BERGEZ CO.

172 Fifth Street

San Francisco, California

K S D—St. Louis Post-Dispatch—546 Meters

K D S WEEKLY PROGRAM—WEEK OF NOVEMBER 12TH
Pacific Time
WEEK OF NOVEMBER 26TH

MONDAY—

- 6:00 p. m. Vocal and Instrumental Specialties, Orchestra and Organ Music, broadcast direct from the Grand Central Theatre.
9:30 p. m. Program to be announced.

TUESDAY—

- 6:00 p. m. Norman V. Dixon, Baritone; Miss Irene Slate, Pianist; Mrs. N. V. Dixon, Accompanist. Addresses by H. E. Wiedeman and W. Guy Whitehead.
9:00 p. m. Dance music played by Silverman's Orchestra, broadcast direct from Hotel Jefferson.

WEDNESDAY—

- 5:00 p. m. Program by Abergh's Concert Ensemble, Arne Arnesen, violinist; broadcast direct from Hotel Statler.
9:00 p. m. Broadcasting dance music played by Rodemich's Orchestra, direct from Hotel Statler.

THURSDAY—

- 6:00 p. m. Broadcasting the concert of the St. Louis Symphony Orchestra, Rudolph Ganz, conductor; Max Steindel, 'cellist; soloist; given at the Odeon.

FRIDAY—

Silent.

SATURDAY—

- 5:30 p. m. Orchestra concert, organ recital and vocal and instrumental specialties, broadcast direct from the Missouri Theatre.

Don't forget that promise you made yourself that you were going to do your Christmas shopping early this year. There are so many arguments in favor of it and none against.

MURDOCK "SOLID" NO. 56 HEAD PHONES

Best at Any Price

RADIO ARGENTITE

Trade Mark
JUNIOR

THE MOST FOR YOUR MONEY

Radio-Argentite Detectors are scientifically adjusted to give full value to the delicate tone shading that it is so necessary to hear if you are to get the most enjoyment from the broadcast programs. Thorkensente, the ore from which all Radio-Argentite detectors are prepared, is the only known mineral that can be tempered in this manner. Be sure you get the genuine Radio-Argentite.

CURRY & COUPELLIER LABORATORIES

2843 West Ninth Street

Los Angeles, Cal.

1 Tube Reflex with Phones	\$24.50
2 Tube Reflex Loops and Phones	40.00
5 Tube, 2 Radio, 2 Audio and Detector	45.00

Crystal Sets \$4.50 to \$7.50

RADIO HEADQUARTERS

7430 Moneta Ave.

Los Angeles

W M A Q—The Chicago Daily News Radio Program

Located on the Roof of the Hotel LaSalle, Chicago, Ill.—Wave Length 447.5
 Week of December 3, 1923 (Subject to Change)

- MONDAY—**
 2:30 p. m. To be announced. Monday night is silent night in Chicago.
- TUESDAY—**
 2:30 p. m. Program by pupils of Glenn Dillard Gunn School of Music.
 5:00 p. m. Weekly Babson Statistical Report.
 5:30 p. m. "Feast of Lights," Jewish Festival program.
 6:30 p. m. W M O Q Dance Orchestra.
 7:00 p. m. Hotel LaSalle Trio.
 7:15 p. m. Program provided by Lyon & Healy.
- WEDNESDAY—**
 11:00 a. m. Speeches broadcast from Chicago Assn. of Commerce luncheon.
 2:30 p. m. Pupils of Cosmopolitan School of Music and Dramatic Art.
 5:00 p. m. Miss Georgene Faulkner, the Story Lady, tells stories for children.
 5:30 p. m. Weekly lecture from Northwestern University.
 6:30 p. m. W. M. A. Q. Dance Orchestra.
 7:00 p. m. Hotel LaSalle Trio.
 7:15 p. m. Musical program by Mme. Sturkow-Ryder.
- THURSDAY—**
 2:30 p. m. To be announced.
 5:00-8:00 p. m. Wheat Council—talk on "Toast"—Rockwell Stephens, Auto Editor The News.
 6:30 p. m. W M A O Dance Orchestra.
 7:00 p. m. Hotel LaSalle Trio.
 7:15 p. m. University of Chicago Glee Club.
- FRIDAY—**
 2:30 p. m. Pupils of Bush Conservatory.
 5:00 p. m. Weekly program arranged by Mrs. Frances M. Ford for "Wide Awake Club."
 5:30 p. m. Weekly musical lecture by Mrs. Marx E. Oberndorfer.
 6:30 p. m. W M A Q Dance Orchestra.
 7:15 p. m. Program arranged by the Cosmopolitan School of Music.
- SATURDAY—**
 6:00 p. m. Harrison Technical High School Band.
 7:00 p. m. Weekly musical review broadcast direct from the Chicago Theatre.

**HEAR
 ONE
 TODAY**

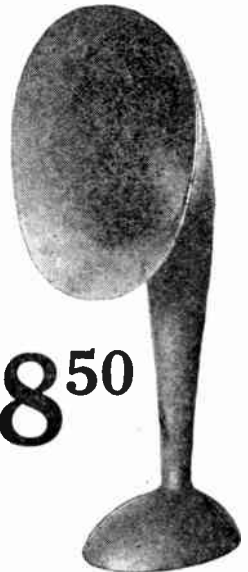
“CLEAR-RADIO”

CLEAR RADIO SPEAKER

**True Reproduction of Voice and Music
 Absolutely No Vibrations**

Sweet, clear tones, no distortions or mushy sounds—good full volume without those rasping effects. Made of soundproof "Parembo," you get the entire strength from its special shaped throat and large bell-shaped mouth. Absolutely no metal parts. Extra large size, finished in grain leather effect. A big speaker at a little price. You'll want one when you see it.

\$8.50



Distributed by

PAREMBO SALES CO.

741 San Fernando Bldg. Phone Broadway 8365 Los Angeles, Cal.

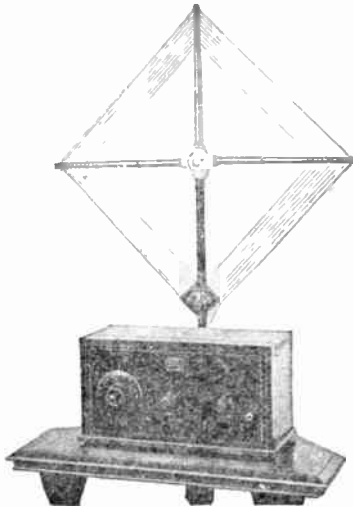
Ask Your Radio Dealer, He Knows

Southern California Distributors
for
“SLEEPER MONOTROL”
The Most Perfect Set in America

Licensed—under the Grimes Inverse Duplex Circuit Patents— the only system for using the same tubes in inverse direction for both radio and audio frequency amplification.

No Outside Wires—the only connection is with an indoor loop. No outdoor aerial need be erected and there is no ground connection whatsoever.

The Monotrol Loop—a beautiful Windsor Period loop is furnished complete with every set and reduces static disturbances and other interference to practically zero.



Absolute Clearness—use of radio frequency without regeneration makes distortion impossible. Absolute purity, clarity and naturalness of tone are assured.

Intensity Control—the special patented taps on the Monotrol Loop make it possible to control intensity of volume without disturbing the tuning.

Distance and Volume—3 tubes do the work of 5, giving two stages of radio frequency amplification and two of audio with tube detector. No crystal to search for a sensitive spot over its entire surface.

Any radio set that works will give you a thrill the first time you listen in on the air, but the ambition to hear more and to hear further and better grows so quickly that you might as well buy the best in the beginning as in the end. The SLEEPER MONOTROL (at no higher—even at a lower price) will assure you the most perfect reception for every broadcast program that can possibly be heard through any three-tube set and many which could not be heard except through five-tube sets in any other type of circuit.

Complete with Loud Speaker, Batteries and Tube
\$197.50

“Dealers Write for Proposition”

MOTOR CAR SUPPLY CO.

RADIO DEPARTMENT

Open Evenings Till 9 P. M.
920 South Broadway

Telephone 826-063
Los Angeles, California



In order that questions be answered promptly and accurately, write plainly, number your questions and make them as brief as possible.

TECHNICAL EDITOR.

HALL BERRINGER

Question No. 1.—Please tell me if a 23-plate condenser hooked up with a vario coupler would cut out any interference. It seems I get quite a bit of interference the way it is. All local stations come in at the same time.

C. R. FUNK.

5926½ South Hoover St., Los Angeles.

Answer No. 1. A variable condenser and a vario-coupler can be used to increase the selectivity of your receiver. In using them, use the primary of the coupler in the aerial circuit and the secondary in the grid circuit. The variable condenser can be used in series with the antenna or shunted across the secondary of the vario-coupler.

Question No. 2.—I want to thank you for the promptness of your question and answer department in answering a question I sent in a few weeks ago, and would also like to add my protest to the many going around about silent night on Mondays. Why is it that Radio K. F. I. can't keep silent one night a week like the Times. I know that the Times and Anthony are rivals, but when the listeners in are all (a majority) asking for a silent night, that is no time for Anthony to be contrary. I appreciate the good programs that K. F. I. broadcasts, but I think six nights a week is enough of this.

GEORGE CARTER.

Answer No. 2.—It is impossible for us to say why K. F. I. does not observe the silent Monday night. No doubt Mr. Anthony has considered this, and has taken the matter up with the Examiner, the Herald and the Ambassador Hotel. Perhaps his contracts with his remote control stations will not allow this.

Question No. 3. We have been much helped by the questions and answers that appear in Radio Doings from time to time, and now I wish to ask a simple question, in hopes that you can advise if not help me.

Some time ago I put in a small Westinghouse Senior (1 tube type WD-11) radio set. My wife being sick at the time and unable to get out, she enjoys the several programs rendered very much, but she was particularly interested in the Lord's Day program put on by K. J. S., the Bible Institute of Los Angeles. Yet every time they come on the air we get them almost perfectly for a matter of five or ten minutes sometimes, sometimes only for two or three minutes, then someone comes on there, sends a few letters in code, then seems to hold his key down or the generator run, something that makes a sort of buzzing noise that drowns out K. J. S. so we can only get a word now and again. Now K. J. S. is not on the air so much of the time that the commercial people need to butt in in order to do their work, as they are only on one hour on Lord's Day at noon and one hour from 6 to 7:30 p. m. and again one hour from 8 to 9 p. m. and two

(Continued on Page 43)

**“RADIO” when connected with PREMIER
Means—something**

The Southern California Distributor
(Wholesale only) for

THE PREMIER ELECTRIC CO.

CHICAGO, ILL.

COKER ELECTRIC SUPPLY CO.

817 West Third Street

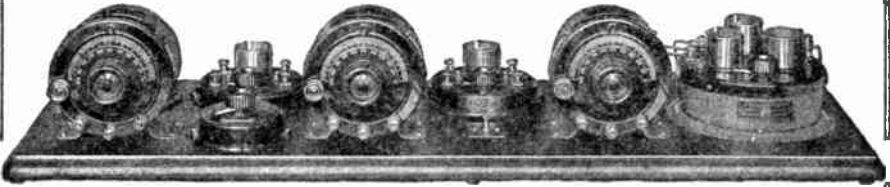
Phone 822-237

Los Angeles

Full Information and Price List

ATWATER KENT

Model 10 Receiving Set



THE Atwater Kent Model 10 Receiving Set is an excellent example of modern Radio engineering. It includes 2 stages of tuned radio frequency amplification, Detector, and 2 stages of audio frequency amplification.

The instruments included are 3 Variable Condensers, 3 Radiodyne Transformers, 2 Tube Units, Potentiometer, and Detector, 2 stage Amplifier.

Exceptional selectivity, volume on D. X. signals, efficiency, and great ease of operation are accomplished through the circuit arrangement used. Its range of operation includes all wave lengths in the broadcast band.

With this set it is very easy to return to the dial settings for any given station once they are recorded. It is designed for tubes using $\frac{1}{4}$ ampere, with the exception that a 1-ampere detector tube may be used, if desired.

No. 4340 Model, 10 Receiving Set, as above,
wired.....\$88.00

Electric Equipment Co.

DISTRIBUTORS

1240 South Hope St.

Telephone 873-921

Los Angeles, Cal.



(Continued from Page 41)

hours on different nights during the week. We got much of the same trouble when the sermons are on the air from K. J. S. and K. F. I. Now it seems to me that there might be some way to withhold commercial work for a matter of, say, two hours from 10 to 12 a. m. and from 6 to 9 p. m. on the Lord's Day if at no other hours during the entire week. Or has the devil got so much of a hold on even radio that he will not permit of five hours in a whole week for other than jazz and the almighty dollar getter to have the use of the air any of the time? If it is impossible to tune out those interferences, and one must listen to that sort of thing or nothing, I feel that it would be more profitable to put the set on the shelf for good. But as this trouble only occurs during these particular hours, it seems as if it were intentional on the part of someone who is afraid to listen to the truth concerning his own soul and God, and makes this interference on purpose to drown out K. J. S. and all others where the truth is expounded, so that no one can hear.

Please answer in Radio Doings, that all listeners-in can see what to expect on this subject.

FRANK J. THOMPSON, U.S.N.
4647 Hamilton St., San Diego, Cal.

Answer No. 3.—It may be of interest to you to know that the United States Naval Station, call letters, N. P. L., at San Diego, is causing this interference. We understand that the Navy is now working on plans to eliminate the interference you experience. All we can do is suggest that you make your receiver as selective as possible.

Question No. 4.—Would you please answer the following question, either in Radio Doings or by mail? I am very interested in the new Autoplex receiver and would like to know if it is practical. They say it will bring in stations on the loud speaker which are within its range. Would its range be equal to the common regenerative two circuit receiver.

ARTHUR T. SNYDER,
Springfield, Idaho.

Answer No. 4.—We do not know anything about the new receiver you speak of. The radio publications are full of new circuits and it is impossible for us to try out all of them in order to talk intelligently about them. Any good receiver will bring in stations within its range on the loud speaker.

Question No. 5.—In your issue of Radio Doings dated September 9-15, you published an article (Crystal Reception), by Hall Berringer, in which you state that the circuit mentioned can be obtained through Radio Doings. I wish to get a good crystal circuit that will cut out interference and get some distance. Kindly inform me as to how I may obtain this circuit.

WM. SIMPSON,

1031 West 25th St., Los Angeles.

Answer No. 5.—This circuit may be obtained at Radio Doings.

TUBES REPAIRED

Detectors \$2.75—Amps. \$3.25. All Work Guaranteed Good as New.
No Charge for Broken Glass. Discount to Dealers. 15-Day Service Now.

LESTER RADIO SHOPPE

140 So. Spring St.

Metropolitan 4832

Open Evenings

A MESSAGE FROM M. A. R. S.

A One-tube Reflex Set, All Complete in Cabinet,
with Tube Batteries, Phones and Loud Speaker, \$65

MANUAL ARTS RADIO & ELECTRIC SHOP

4154 S. Vermont Ave. Phone Vermont 7836 Los Angeles, Calif.



Charges Radio and Auto Batteries at Home Over Night for a Nickel

For a friend who owns a radio set or auto, what would be more appropriate than a gift which would eliminate the inconvenience and expense of taking his battery to a service station every time it requires recharging? The

**GOLD SEAL
HOMCHARGER**

is such a gift, appropriately dressed up in a beautiful package. It charges any Auto, Radio or "B" storage battery in the quickest, simplest and most efficient manner possible. Connects to any lamp socket—operates silently—requires no watching. Fully automatic in operation—absolutely safe. Beautifully finished in mahogany and gold. Unqualifiedly guaranteed. Over 125,000 already in use.

At all good dealers, \$18.50 complete (\$25.00 in Canada)—no extras to buy.

FREE: Ask your dealer or write direct for free copy of Homcharger list of broadcasting stations and GOLD SEAL bulletin.

Insist
on the **GOLD SEAL**

LOOK FOR IT



It's your guarantee against substitution and appears on name-plate and package. No other charger is just as good.

Automatic Electrical Devices Co., 172 West Third St., Cincinnati, O.
Largest Manufacturers of Vibrating Rectifiers in the World

WESTERN DISTRIBUTOR:

BERTRAM SMITH

400 San Fernando Bldg., Los Angeles, Cal.

Shipments to all points west of Rockies from Los Angeles stock.

The Get-Together Banquet

The "get-together" banquet of the radio trades, held under the auspices of the Radio Trades Association of Southern California, at The Oaks Tavern, Los Angeles, proved a great success. One hundred and seventy-three of those engaged in the radio business in its various branches were present. Of these, over fifty were from out of town and represented nearly every city and town in Southern California.

The order of business following the banquet was as follows:

1. Address of Welcome—President Dennis.
2. Guest of Honor—J. C. Johnson, General Manager American Radio Exposition Company of New York.
3. Association — Secretary Farquharson.
4. National Radio Week — H. C. Charles, Editor Radio Doings.
5. Radio and Music Associated — J. W. Boothe, Barker Brothers.
6. "Uncle John" Daggett — KHJ, The Times.
7. Some Evils That Can Be Avoided. — E. P. Tucker, Wiley B. Allen Co.
8. The Association from the Manufacturer's Viewpoint—H. F. Jefferson, Kilbourne & Clark Manufacturing Co.
9. The Jobber's Viewpoint — Al Myers, Leo J. Meyberg Co.
10. The Out-of-Town Dealer's Viewpoint—S. Hastings, Fallon & Co., Santa Barbara.
11. Membership — A. E. Schifferman, Newbery Electric Co.

**DO YOUR CHRISTMAS
SHOPPING EARLY**

Boost Radio to Congress

Indications are that the U. S. Bureau of the Budget will only approve of appropriations amounting to one-sixth of the Department of Commerce's lowest estimate as necessary for the administration of radio matters during the next fiscal year. With all forms of radio activity increasing, the scope of the Radio Section has been extended until several times the work is being done by the same field force and the same personnel in the Washington office, that existed before broadcasting and extensive amateur activities began. The department needs both more men and money.

What the Budget has allotted, in addition to the regular annual appropriations, is not enough to secure the services of one additional clerk in each of the nine radio districts, where several assistant radio inspectors are needed, besides funds for tests, travel and office work. There are no funds for an increase in the Washington headquarters, where thousands of licenses, complaints and reports of different kinds are handled every week by an inadequate force.

An appropriation of \$215,000 was asked for radio supervision in the fiscal year ending June 30, 1925, which was only \$76,000 over the current appropriations. The increase was felt to be absolutely necessary for conducting the work of inspection of ships and shore stations, licensing of amateurs and commercial operators, and administration of radio in general. Later, officials of the Department, under Budget pressure, cut this figure to an increase of approximately \$60,000, but the Budget is understood to insist that about \$149,000 is sufficient for the next year, an increase of only \$10,000.

Funds for radio research, experimentation and tests at the Bureau of Standards are also essential, and should be provided by Congress to insure adequate development in all lines of radio communication.

Radio Week is a good time to boost radio and get Congress interested. Manufacturers, led by the representatives of the Crosley Company of Ohio, suggest that all fans urge their Senators and Congressmen to provide sufficient funds for the proper functioning of Government radio supervision and development, so that America may keep in the fore of wireless communication.

Heath's Electric Shop

NOTICE!

During the month of **December** our **Radio Department**
will be open till 9 P. M.

Freed-Eisemann and Fada Neutrodyne Parts

1052 N. Western Ave., Hollywood

Phone Holly. 1937

"Out of the Air"

By LISTENER-IN

Chief Supervisor of Radio W. D. Terrell of the Department of Commerce, who visited Los Angeles lately in his official capacity, was the guest of the Radio Trades Association at a luncheon at the Alexandria Hotel. He reported marvelous progress in radio all over the country both as to broadcasting and the class of equipment during the year. Many of the prominent dealers, manufacturers, jobbers and broadcasters were present to extend him a welcome.

We welcome a new 500-watt Class B station on the air, KLX, the Oakland Tribune. We congratulate this station on its excellent modulation. The Pacific Coast is now well served with Class B stations and the radio public should be entertained all through the day.

C. E. Morrison is now director in charge of KPO. Mr. E. J. Martineau, the late director, has gone into business for himself as a radio engineer in San Francisco.

We have had so many inquiries about broadcasting stations in Mexico City that we have procured a list of these with time they are on the air, Pacific time:

Tuesday—CYB. 6:00 to 7:30 P. M.

Thursday and Friday—CYL. 7:30 to 9:00 P. M.

Saturday—CYB. 6:00 to 7:30 P. M.

Cupid has been busy amongst radio people. Mr. I. T. Perdun, business manager for Radio Doings, and Mr. O. E. Garretson of Radio Sales & Service, Los Angeles, have taken unto themselves wives. Radio Doings extends to both of these gentlemen very hearty congratulations and wishes them happiness for all time.

Amongst the thousands of dealers that competed for the prizes offered by The E. T. Cunningman Tube Company, Los Angeles was able to land first prize. Lester's Radio Shop was the successful exhibitor and we congratulate him.

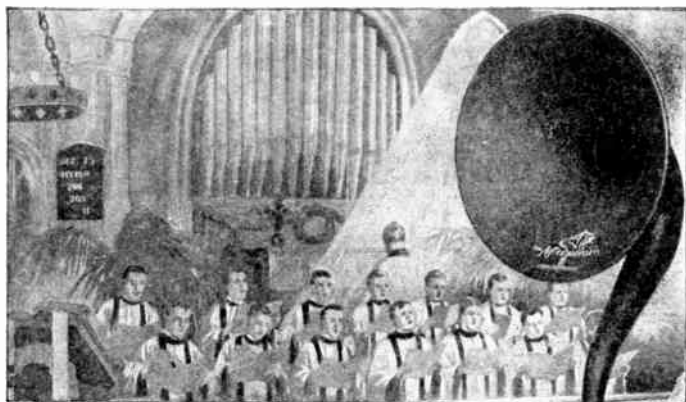
The Workrite plant in the Stimson Building, Los Angeles, is now in operation. Four automatic machines are in place and they have a capacity of one hundred sets per week. Cabinets will also be manufactured.

William W. Wright, late manager of the Los Angeles branch of the H. Earl Wright Company, has opened a very attractive radio store, known as Hollywood's Radio Studio at 709 North Western Avenue, Hollywood.

Difficulties in broadcasting in India are many, the greatest arising out of the diversity of languages. A projected super-broadcasting station in Delhi was considered impracticable when it was found that a news program of 500 words, if translated into the many languages of India, would take 24 hours to transmit. Another difficulty with broadcasting is the enormous distances in the country.

When we hear something exceptionally good over the air we feel that we cannot overlook mentioning it. The Russian String Quartette that played for KHJ on Sunday, November 25th, on the evening program, rendered their selections with such skill and feeling that everyone who heard them could not but feel that they were listening to artists of the highest caliber. We hope we shall have the pleasure of listening to them again.

KFHJ, Fallon & Co., Santa Barbara, starting on Wednesday, December 5th, will broadcast at midnight initiation Benevolent Order of Sundodgers. This will be continued on every Wednesday until further notice. Their wave length is 360 meters. Our good friend, Mr. S. Hastings, is the announcer and you therefore can be assured something novel. Those who do not know Mr. Hastings by name will remember him as the "janitor" over KHJ.



*Magnavox brings you the
Voice of all Christmastide*



THE Art of Radio Reproduction is enjoyed by every Magnavox owner. Despite the ever-increasing quality and variety of Broadcast Programs, many a receiving set gathers dust unlamented because of insufficient sensitivity or an unsatisfactory "loudspeaker."

Every Magnavox owner is a master of the art of radio reproduction—the results obtained by the use of Magnavox Reproducers and Power Amplifiers cannot be equalled with apparatus constructed in the ordinary way.

The special attention of dry battery receiving set owners is called to the new Magnavox Reproducer M1, illustrated above.

Magnavox Reproducers

R2 with 18" horn	. \$60.00
R3 with 14" horn	. 35.00
M1 for dry battery sets	35.00

Combination Sets

A1-R Reproducer and 1-stage Amplifier	. . 59.00
A2-R same with 2-stage	85.00

Power Amplifiers

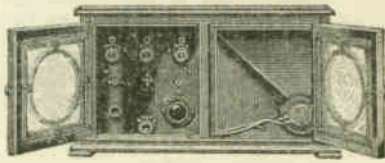
A1-One-stage	. . 27.50
AC-2-C-Two-stage	. 55.00
AC-3-C-Three-stage	. 75.00

*Magnavox Products can be had of
good dealers everywhere.*

THE MAGNAVOX CO.
Oakland, Cal.

New York Office: 370 Seventh Avenue
Perkins Electric Ltd.; Toronto, Montreal, Winnipeg, Canadian Distributors

A THE ACE 3C E Consolette



Complete with All Accessories—Only \$178.00

The new **ACE 3C** is the neatest, most efficient regenerative radio broadcasting receiver on the market.

The new **ACE 3C** leaves no unsightly batteries or other accessories spread about the room.

The new **ACE 3C** is completely self-contained in a mahogany cabinet—a beautiful piece of furniture.

The new **ACE 3C** is simple to tune.

*Send for a Descriptive Circular
Or Have Your Dealer Demonstrate the **ACE 3C**
in Your Home*

IT SPEAKS FOR ITSELF

The Braun Corporation

Southwestern Wholesale Distributors

363 New High St.

Los Angeles, Calif.