

Radio Programs (Daylight Time Has Only A Little More
Pleasure Schedule, This Program Will
Help You Enjoy Your Day) in Handy Form

6/33

JUNE

25 Cents

Radio Log and Lore

FOR ONE DOLLAR (This Magazine Provides Just the Right Kind of Service
Desired to Keep You Well Acquainted With Your Radio) FOR ONE YEAR

THE RADIO PARADE

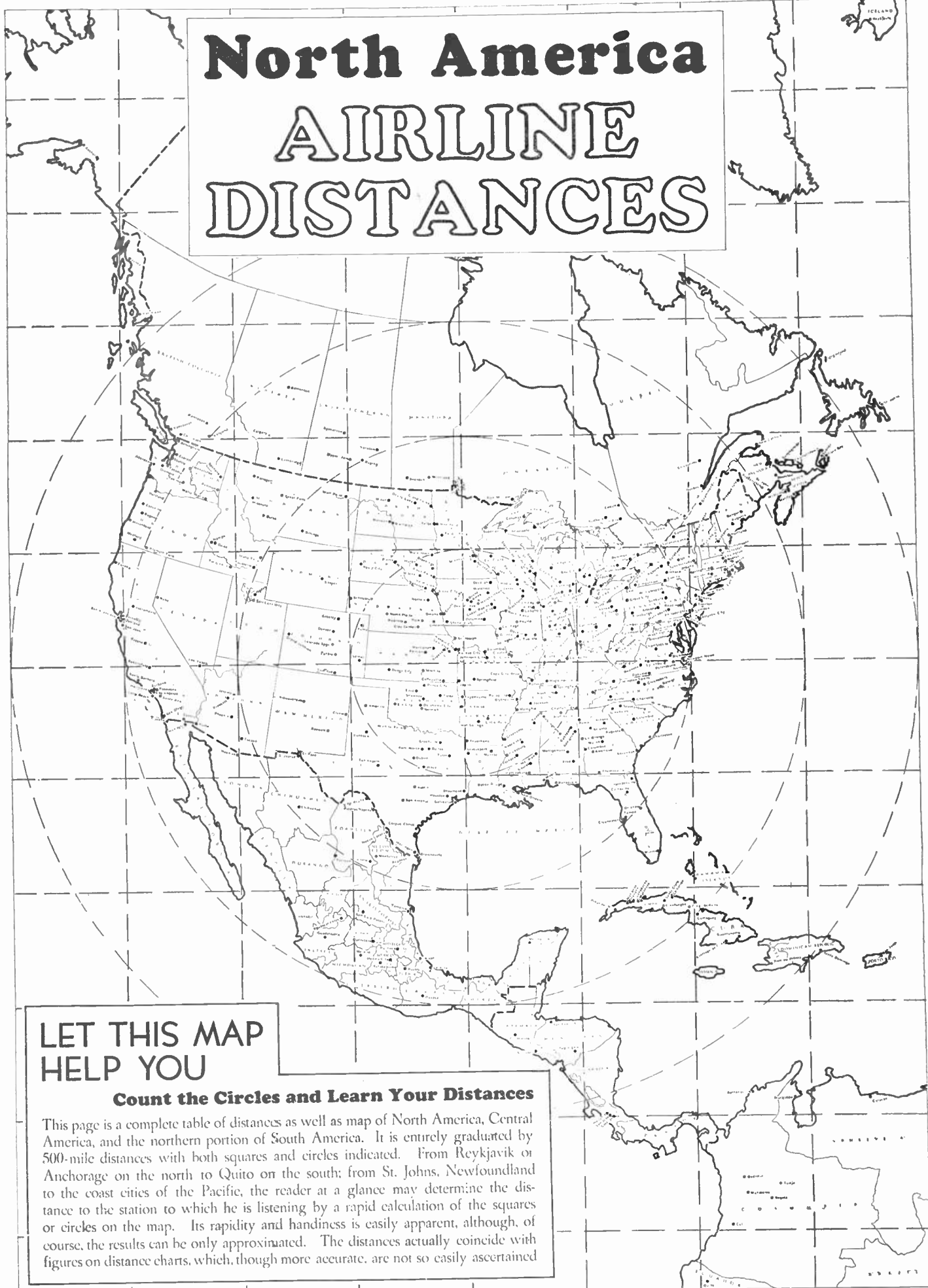


Above: Mady Christians, German actress, heard on the Big Show program
The boys hit the home stretch. Amos 'n' Andy are counting the days until they are back at the NBC Chicago studio

The proud fisherman is Phil Harris, heard over NBC Friday nights. This is the first vacation Phil has had in four years and he, and the members of his orchestra, are having a grand old time

R.H./SIP
#5.00

North America AIRLINE DISTANCES



**LET THIS MAP
HELP YOU**

Count the Circles and Learn Your Distances

This page is a complete table of distances as well as map of North America, Central America, and the northern portion of South America. It is entirely graduated by 500-mile distances with both squares and circles indicated. From Reykjavik or Anchorage on the north to Quito on the south; from St. Johns, Newfoundland to the coast cities of the Pacific, the reader at a glance may determine the distance to the station to which he is listening by a rapid calculation of the squares or circles on the map. Its rapidity and handiness is easily apparent, although, of course, the results can be only approximated. The distances actually coincide with figures on distance charts, which, though more accurate, are not so easily ascertained

Radio Log and Lore

WHITMAN RADIO PUBLISHING CO.

W. R. WHITMAN, PUBLISHER
ALICE M. WHITMAN, EDITOR



Published monthly. Entered as second-class matter at post-office at Kirkland, Wash., under the act of March 3, 1879. Entire contents copyrighted. Printed in U. S. A.

**[VOLUME FIVE
NUMBER 4 (JUNE)]**

Business and Publication Office:
KIRKLAND, WASHINGTON, U. S. A.

**• \$1.00 per Year
\$1.25 Canada and Foreign**

ABOUT MAGAZINE DATING AND PROGRAM SCHEDULES

Readers of Radio Log and Lore will notice that the cover dating of this issue is June and that with an apparent omission of the May number. As a matter of fact, this number is really a combined May and June number; the serial number is continuous and no number has been missed. In the past, Radio Log and Lore has been published previous to the fifteenth of each month, although copies have not reached subscribers across the continent until many days later. Several subscribers are under the misapprehension that radio schedules are issued by the month and have written complaining that they had scarcely received their copy when the month had elapsed and the listings had become obsolete.

as fast as they occur and this magazine was particular to include the very latest program information as well as the latest log changes in each issue. Thus the publication of any given month was practically on a par for lateness with many publications that dated one month later. Thus, this issue, which would otherwise be the May issue, was set back a few days and dated June in order to conform with the post-dating practice of contemporaries. No later information will be given than heretofore, because the very latest has been given at all times. This issue is simply dated ahead to conform with the practice of contemporaries and to satisfy readers used to this post-dating and who have assumed wrongly that the information could not be up to the minute. All subscriptions will be extended one month to give full count.

McFADDEN BILL HEARING ENDS; NAB OPPOSES IT

(Washington Correspondence)

Heardings have been closed preliminary to legislation on the McFadden bill, which proposes compelling broadcasting stations to accept religious, charitable and educational programs without discrimination. The bill is now in the House of Representatives.

The National Association of Broadcasters headed opposition to the measure, with Phillip G. Loucks, managing director, as first witness. He pointed out defects in the bill and reviewed it.

He then commented that under this measure, the broadcaster would have to open his station to debate on all subjects at all times, or else refuse all programs of this type. He would have to accept all programs if he took any. He argued that the government

might bring any such programs into line according to the "legislative standard of public interest, convenience and necessity" and thus provide further inconvenience for the broadcaster.

M. H. Aylesworth, president of the National Broadcasting Company, said, "the provisions offered in this legislation, will serve to restrict rather than to liberalize, and will severely limit rather than to broaden the use of radio in religion, governmental and public affairs, education and public information."

The only organization favoring the bill was under Judge Rutherford, charging that the National Broadcasting Company and the Columbia Broadcasting System has denied Jehovah's Witnesses access to their stations.

TRIAL BROADCAST IN FRISCO

(San Francisco Correspondence)

For the first time, a broadcast of a real trial has been made in a San Francisco courtroom. Three programs weekly were given over KJLB during February.

The broadcasts were made as an educational experiment, and help to acquaint the citizens of that district with court criminal procedure. The first session to be broadcast was in Municipal Judge George J. Sawyer's court.

He commented on the experiment, "In this way, much of the criticism of present-day jurisprudence may be eliminated, and at the same time,

those factors which need correcting will be clearly put before the people."

Broadcasts were closely watched by court officials and radio men, to keep track on everything said. Speeches were not limited to the law, however, as defendants were occasionally given an opportunity to say something in their own behalf.

The work is considered to be a real help in acquainting the people with courts, and has met with the approval of both officials in San Francisco. It is also an excellent educational scheme, many believe.

Not only do the children of America, but also many Chinese boys and girls now hear the delightful fables and children's stories which Irene Wicker, the Singing Lady, tells in her broadcasts over NBC. At the request of Frank R. Milligan, Chinese missionary who heard her broadcast during a visit here, Irene is sending her script to Shanghai.

Billy Page, who is Jack Tarbour to a nationwide audience, celebrated his sixteenth birthday recently. First he was interviewed by a youthful radio star. Then came a birthday gift from his parents—a real grown-up dinner and dancing party at the Hotel St. Francis, with some of his schoolmates as guests. Gus Arnheim's Orchestra saluted him with "Happy Birthday to You."

ABOUT DAYLIGHT TIME

Daylight saving time as adopted in New York and Chicago where most radio programs originate, has caused complications in program time for those localities not observing it. The time on our program schedules remains Standard, and will cause no change in time for those without daylight time. Those who live in daylight saving areas should add one hour to the schedules for correct time for them.



TWENTY MILLION NEW LISTENERS IN 1933

(Geneva Correspondence)

Twenty million new radio listeners in one year. These are the figures reported to the International Broadcasting Office from all over the world. This brought the world's grand total up to 180,000,000 at the first of this year.

Europe and America have continued to compete strongly for broadcasting honors, with North America in the lead because of the installation during 1933 of nearly a million sets in motor cars. The total was 20 million, 500 thousand.

Second place went to Europe, not including Russia, with 18 million in its audience. Asia has credited its third place to Japan, whose broadcasting is growing noticeably each month.

South America, whose figures on the numbers of listeners are difficult to obtain, comes fourth, and Australia has risen to fifth place, with a high proportion of listeners according to her population.

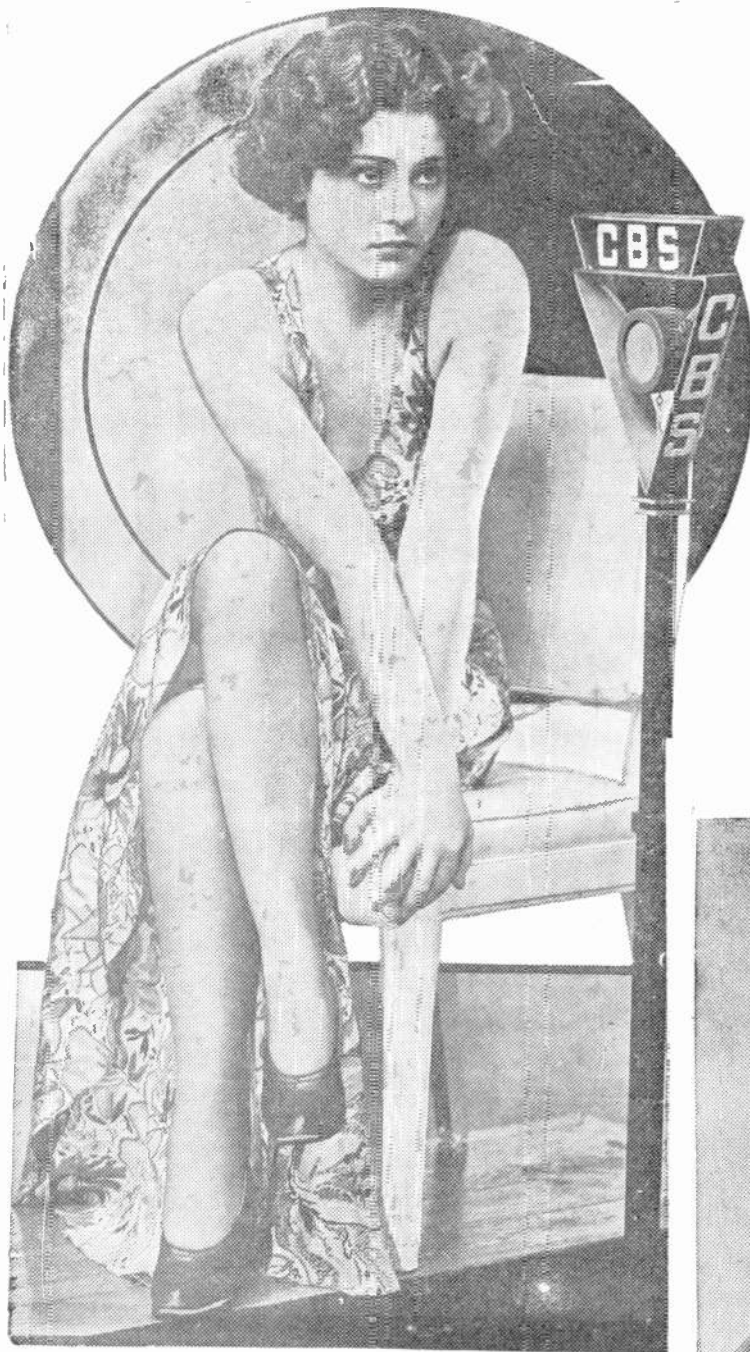
Less people in proportion to one receiving set seems to be the present trend, as five million new sets have been added giving one to each four listeners. This is a far cry from the day when the whole family and all the neighbors passed the earphones from one to another.

Reports that a saturation point in listeners might soon be reached in Great Britain and possibly in Denmark, have been ridiculed by A. R. Burrows of the International Broadcasting Office.

He points out how many millions there are who have never heard programs and do not realize the possibility of the radio. The saturation point will probably not be reached until after 1940, he claims.

The Broadcasting Office has compiled the figures received from reports on the issue of wireless licenses, and some from trade returns, and now has a diagram indicating the listeners according to countries.

These figures indicate that difficulties which involve world affairs have not succeeded in damaging the radio audience to any great extent, and as better compiled records are received in, an astonishing increase to come may be expected, Mr. Burrows says.



BEA

And

MICRO



THIS deep voiced song-bird is Ruth Robin, who is now soloist with Charles Barnet's Orchestra, over the WABC-Columbia network several times a week. She's only nineteen but her singing has already brought praise.

EDITH Murray is a real artist, and her unusual style of singing over WABC and Columbia network every Friday night from 11 to 11:15 P. M., EST has earned her the title of "dramatist of song" from pleased listeners.

I J T Y

The

PHONE



SHE has grown up now, has Sylvia Froos, and she's back with the Columbia network. The one time baby singing star has just come back from movie-land. She's on the WABC-Columbia network every Thursday at 6:45 P.M., EST. Sylvia looks like it's good to be back from the land of orange trees and Kleig lights.

NO, it's not explosive Lupe Velez, but her radio impersonator, Arlene Frances, who mimics screen luminaries in "Forty-Five Minutes in Hollywood". She takes listeners behind the scenes each Sunday, 9:30 P.M., EST, over the WABC-Columbia network. Here she is in a costume built the way Lupe likes them, and with an expression characteristic of the Mexican star.

Under Canada's new nationalized radio, the Canadian Radio Broadcasting Commission operates a chain from Halifax to Vancouver. A complete evening schedule is maintained with no day releases

LEGEND:

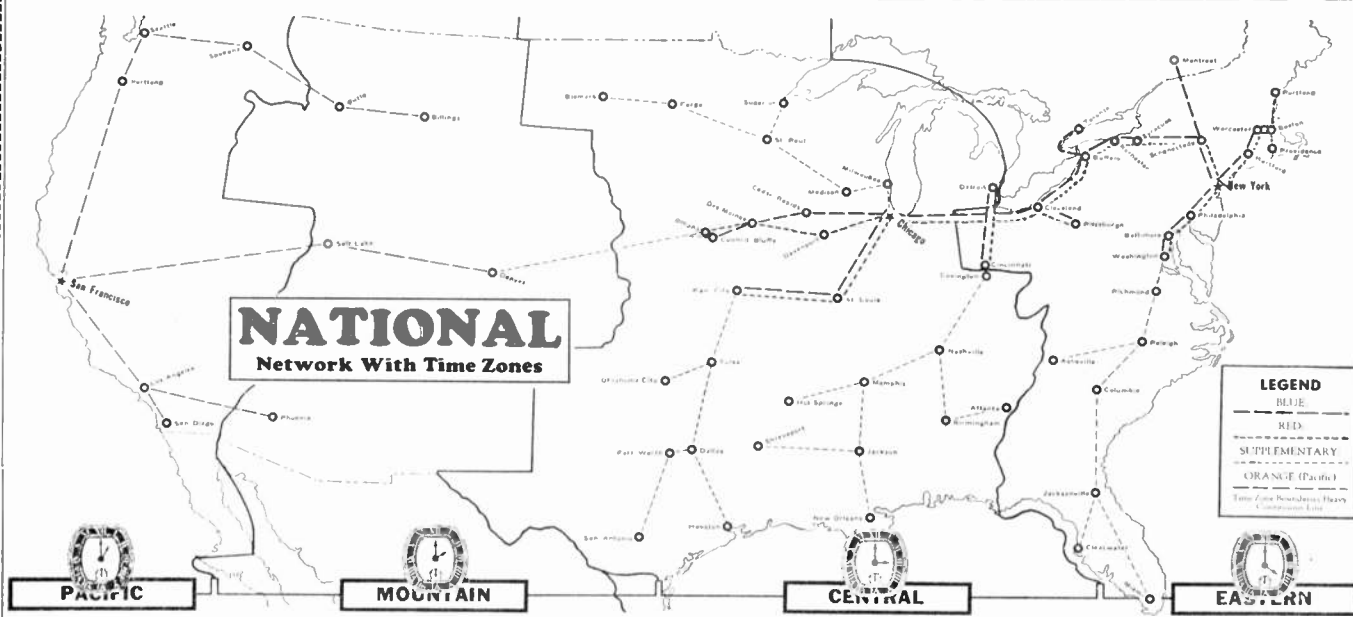
These two pages dealing with the four great transcontinental broadcasting networks that cover North America, are published in order to give the listener a better understanding of the source of his entertainment and how it reaches him; also to make clear the use of the program schedules.

An overwhelming majority of interest in radio entertainment generally, is of course in the so-called network programs, which may be produced anywhere, but generally are released from key station studios in New York or Chicago. Thus from one small studio, a single broadcast is heard by countless millions, in many different time zones. While the program is produced and heard at a given time in New York, it is heard simultaneously in San Francisco, yet some three hours earlier as far as clock reading goes.

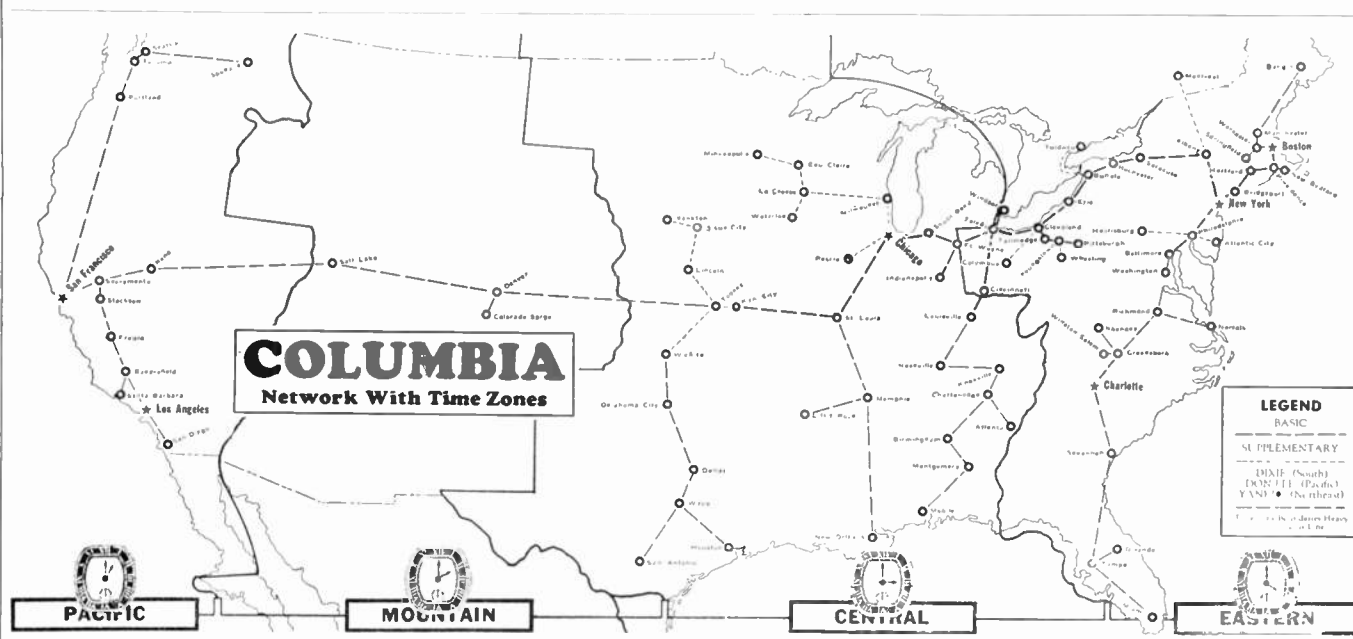
The time zone map of the networks on these pages, make clear why programs are received at various hours in different time zones, and also makes clear the zone location of any station from which the program may be coming. The complete station list of each chain is given, from which may be dialled the nearest station of the chain from which the program is desired. It should be remembered, however, that member stations do not take every release; if one does not carry the program you desire, try another.

One condition in broadcasting incidental to many popular programs is very confusing to the average listener—split networks. Amos 'n' Andy is one of these. In this particular case Eastern listeners complained that the program was on the air too late; at the same time Pacific Coast listeners complained that it was coming too early. Thus it became necessary to broadcast the program at a suitable time for the Eastern part of the country and to re-broadcast it later for Western listeners.

Both National and Columbia maintain separate Pacific Coast networks. On account of the great distance and consequent difference in time, these stations operate several hours after Eastern stations have closed down for the night.



This is the complete network of the National Broadcasting Company. It will be noticed the Blue and Red chains run parallel. The Orange chain spans the Pacific Coast, and this circuit, when not producing its own programs, takes either the Blue or Red releases, as does the intervening supplementary networks



The Columbia is a single network system consisting of basic and supplementary chains; also three distinct subsidiary units: the Don Lee on the Pacific Coast, the Dixie in the South and the Yankee in New England. Each of these produce a part of their own programs

HOW THE NETWORKS ENCOMPASS A CONTINENT

NETWORK STATIONS

NUMERICALLY BY KILOCYCLES

This is a complete list of all chain stations in North America. The three transcontinental networks are presented below, with the auxiliary chains of both NBC and CBS. At the right all stations are arranged in numerical order by kilocycles, with an abbreviation showing chain affiliation.

NATIONAL BROADCASTING COMPANY (91)

Table with columns: Channel, Call City, Power, Channel, Call City, Power, Channel, Call City, Power. Includes sub-sections: Blue (21), Red (22), Orange (18), and Supplementry (30).

COLUMBIA BROADCASTING SYSTEM (95)

Table with columns: Channel, Call City, Power, Channel, Call City, Power, Channel, Call City, Power. Includes sub-sections: Basic (24), Yankee (11), Dixie (26), Don Lee (16), and Supplementry (18).

CANADIAN COMMISSION NETWORK (40)

Table with columns: Channel, Call City, Power, Channel, Call City, Power, Channel, Call City, Power. Includes sub-sections: Eastern (23) and Western (17).

Main table listing network stations numerically by kilocycles. Columns: Channel, Call City, Power, Network, Channel, Call City, Power, Network.

Let These Pages Help You Find the Programs You Will Enjoy

Because most of the interest in radio programs is in the transcontinental features, attention is paid in these pages only to these releases. An orchestra begins to play in New York City; far away in another time zone, you listen to the music. You hear it regularly each day until you come to fix in your mind a certain hour; yet others are listening in other zones at a different time, and both are still different from the time in the studio where the orchestra is playing. Yet the music that is going across the continent is going on the air at precisely the same second and the answer to this is the changes in standard time that have a great deal to do with radio programs. Time-zone network maps are published frequently in this magazine, showing the time changes that occur, while program time (for the Evening programs that go across the continent) are given in each of the five zones.

Just as the day begins first in the East, so do the first programs appear. On this page are listed the afternoon chain releases, from noon to six in the evening (Eastern time). A few of these programs go across the continent but in the main it is too early for Coast-to-Coast releases. Following these are the Evening Programs, listed on the following double page. Practically this is the entertainment guide of the nation, and the programs listed include radio's most important. From six in the evening until midnight (Eastern Time) all releases on four networks are shown, the majority of which go from Coast to Coast. The period, however, is a little too early for the Pacific Coast (three in the afternoon to nine in the evening). So on the following page the Pacific Coast networks are shown from four in the afternoon to midnight (seven to three in the morning Eastern time). While these schedules over-

lap the Evening Program schedules, the Coast networks do not carry all of the Eastern releases, supplanting a part of them with their own attractions. All three schedules are based on 15-minute periods—four to the hour. Three simultaneous releases are listed, one for Columbia and two for NBC (the Blue and Red in the East; the Orange and Gold in the West). The Evening Program schedule includes a fourth network—the Canadian chain. This schedule also gives, where possible, the point of origination of each program, and the zones covered. NBC has but one chain on the Coast (the Orange) but a second program schedule is maintained alternately by the two San Francisco key stations, KGO and KPO, the one broadcasting singly while the other heads the chain on which are carried either Coast NBC programs or Eastern Blue and Red releases.

Quarter Hour Periods in Eastern Standard Time		Sunday	Monday	Tuesday	Wednesday	Thursday	Friday	Saturday	
12 NOON Eastern ST	:00	NBC Blue. Phantom Strings..... NBC Red. Capitol Family..... COLUM. Salt Lake Organ.	Morton Bowe, Tenor. The Commodores..... Voice of Experience.	U. S. Marine Band. The Commodores..... Voice of Experience.	Eva Taylor, Crooner. The Commodores..... Voice of Experience.	Mary Phillips, Songs. Piano Recital..... Voice of Experience.	Rhythmic Rover..... The Commodores..... Voice of Experience.	High and Low..... Pietro Yon, Organist. The Knickerbockers.....	
	:15	NBC Blue. Piano Duo..... NBC Red. Gordon String Quar..... COLUM. Salt Lake Organ.	Morin Sisters, Songs. Margaret Santry..... Betty Barthell, Song	U. S. Marine Band. Piano Duo..... Connie Gates, Songs.	Wendall Hall. Piano Duo..... Betty Barthell, Songs	Wendell Hall. Concert Ensemble..... Connie Gates, Songs.	Wendell Hall. Gypsy Trail..... Betty Barthell, Songs	Genia Fonarova..... Pietro Yon, Organist. Pete Woolery.....	
	:30	NBC Blue. Radio City Concert..... NBC Red. Round Table..... COLUM. Madison Ensemble.	Vic and Sade..... Rex Battle Orch. Emery Deutsch Orch.	Vic and Sade..... Concert Ensemble..... Russian Gypsy Orch.	Vic and Sade..... On Wings of Song..... Smiling Ed McConnell	Vic and Sade..... Concert Ensemble..... Russian Gypsy Orch.	Vic and Sade..... Rex Battle Orch. Smiling Ed McConnell	Vic and Sade..... Rex Battle Orch. Saturday Syncopaters.	Vic and Sade..... Rex Battle Orch. Saturday Syncopaters.
	:45	NBC Blue. Radio City Concert..... NBC Red. Round Table..... COLUM. H. V. Kaitenborn.	Male Quartet..... Markets, Weather..... Emery Deutsch Orch.	Merry Macs..... Markets, Weather..... Russian Gypsy Orch.	Merry Macs..... Markets, Weather..... M. Raginsky Ensem.	Merry Macs..... Markets, Weather..... M. Raginsky Ensem.	The Merry Macs..... Markets, Weather..... Russian Gypsy Orch.	Male Quartet..... Markets, Weather..... Russian Gypsy Orch.	Male Quartet..... Rex Battle Orch. Enoch Light Orch.
1 Eastern ST	:00	NBC Blue. Radio City Concert..... NBC Red. Russian Gypsy Music..... COLUM. Church of the Air.	Words and Music..... Xavier Cugat Orch. George Hall Orch.	Words and Music..... Concert Ensemble..... Girls Trio.	Words and Music..... Ned Parish Orch. M. Raginsky Ensem.	Words and Music..... To Be Announced..... Round Towners.	Words and Music..... To Be Announced..... The Instrumentalists.	Words and Music..... Ted Black Orch. Enoch Light Orch.	
	:15	NBC Blue. Radio City Concert..... NBC Red. Russian Gypsy Music..... COLUM. Church of the Air.	Words and Music..... Xavier Cugat Orch. George Hall Orch.	Words and Music..... Ned Parish Orch. Joan Marrow, Music.	Words and Music..... Ned Parish Orch. Screen Stars.	Words and Music..... Pedro Via Orch. Joan Marrow, Music	Words and Music..... Lotus Garden Orch. Artist Recital.	Words and Music..... Ted Black Orch. Madison Ensemble.	
	:30	NBC Blue. Sunday Forum..... NBC Red. Mary Small, Juvenile. COLUM. The Compinsky Trio.	Farm and Home Hour. Concert Ensemble..... M. Haginsky Ensem.	Farm and Home Hour. Concert Ensemble..... Jack Russell Orch.	Farm and Home Hour. Concert Ensemble..... J. Augustine, Orch.	Farm and Home Hour. Concert Ensemble..... Mark Warnow Orch.	Farm and Home Hour. Air Breaks..... George Hall Orch.	Farm and Home Hour. Concert Ensemble..... Harold Knight Orch.	Farmers Program..... Concert Ensemble..... Harold Knight Orch.
	:45	NBC Blue. Sunday Forum..... NBC Red. To Be Announced..... COLUM. The Compinsky Trio.	Farm and Home Hour. Concert Ensemble..... M. Haginsky Ensem.	Farm and Home Hour. Concert Ensemble..... Tony Wons.	Farm and Home Hour. Concert Ensemble..... J. Ellison's Recipes.	Farm and Home Hour. Concert Ensemble..... Tony Wons.	Farm and Home Hour. Air Breaks..... George Hall Orch.	Farmers Program..... Concert Ensemble..... Harold Knight Orch.	Farmers Program..... Concert Ensemble..... Harold Knight Orch.
2 Eastern ST	:00	NBC Blue. Dramatic Sketch..... NBC Red. The Commodores..... COLUM. Edith Murray, Songs.	Farm and Home Hour. Revolving Stage..... Ann Leaf, Organ.	Farm and Home Hour. Merry Madcaps..... Ann Leaf, Organ.	Farm and Home Hour. Two Seats in Balcony..... Concert Miniatures.	Farm and Home Hour. Dramatic Program..... Ann Leaf, Organ.	Farm and Home Hour. Magic of Speech..... Bill Huggins, Songs.	Farmers Program..... Xavier Cugat Orch. Harold Knight Orch.	
	:15	NBC Blue. Dramatic Sketch..... NBC Red. The Commodores..... COLUM. Piano Pointers.	Farm and Home Hour. Revolving Stage..... Ann Leaf, Organ.	Farm and Home Hour. Merry Mad Caps..... Ann Leaf, Organ.	Farm and Home Hour. Two Seats in Balcony..... Concert Miniatures.	Farm and Home Hour. Dramatic Program..... Ann Leaf, Organ.	Farm and Home Hour. Magic of Speech..... J. Augustine, Orch.	Farmers Program..... Xavier Cugat Orch. Artist Recital.	
	:30	NBC Blue. Concert Artists..... NBC Red. Grace Hayes, Songs..... COLUM. Minstrel Man.	Smack Out..... Dramatic Sketch..... Poetic Strings.	Smack Out..... Sea Huter, Songs..... Artist Recital.	Smack Out..... Dramatic Sketch..... Ann Leaf, Organ.	Smack Out..... Trio Romantique..... Poetic Strings.	Smack Out..... Rainbow Reflections..... Ann Leaf, Organ.	NBC Farm Forum..... Short Story Program..... Dancing Echoes.	NBC Farm Forum..... Short Story Program..... Dancing Echoes.
	:45	NBC Blue. Concert Artists..... NBC Red. To Be Announced..... COLUM. Minstrel Man.	George Thom, Baritone. Ma Perkins..... Poetic Strings.	Nellie Revell..... Ma Perkins..... Artist Recital.	Colette Carlay, Songs. Ma Perkins..... Ann Leaf, Organ.	Vin Lindhe..... Ma Perkins..... Poetic Strings.	To Be Announced..... Ma Perkins..... Ann Leaf, Organ.	NBC Farm Forum..... Short Story Program..... Dancing Echoes.	NBC Farm Forum..... Short Story Program..... Dancing Echoes.
3 Eastern ST	:00	NBC Blue. Bar-X Days, Nights. Talkie Picture Time..... NBC Red. Symphony Orchestra..... COLUM. Bar-X Days, Nights. Talkie Picture Time..... Symphony Orchestra.	Radio Guild..... B. Whitely, Baritone. Oahu Serenaders.	Rochester Civic Orch..... String Ensemble..... Metropolitan Parade.	Joe White, Tenor..... Marion McAfee, Songs. Berumen Musicale.	Sleepy Hall Orch..... Y. Davidoff, Basso. Metropolitan Parade.	Margaret Santry..... Marias Certo Matinee. Hurdy Gurdy Man.	Oriental Gardens Orch..... Green Bros. Orch..... Round Towners.	
	:15	NBC Blue. Bar-X Days, Nights. Talkie Picture Time..... NBC Red. Symphony Orchestra..... COLUM. Bar-X Days, Nights. Talkie Picture Time..... Symphony Orchestra.	Radio Guild..... The Wise Man..... Voice of Experience.	Rochester Civic Orch..... String Ensemble..... Metropolitan Parade.	Happy Days in Dixie The Wise Man..... Berumen Musicale.	Sleepy Hall Orch..... Unstated Quartet. Metropolitan Parade.	To Be Announced..... Marias Certo Matinee. Playboys.	Oriental Gardens Orch..... Green Bros. Orch..... Round Towners.	
	:30	NBC Blue. Organ Recital..... NBC Red. Concert Ensemble..... COLUM. Symphony Orchestra.	Radio Guild..... Woman's Radio Review. U.S. Marine Band.	Roy Shields Orch..... Woman's Radio Review. Emery Deutsch Orch.	Happy Days in Dixie Woman's Radio Review. Jack and Jane Carlton	Musical Keys..... Woman's Radio Review. Student Federation.	Marias Certo Matinee Grab Bag.	Saturday Songsters..... Concert Orch..... Bach Program.	
	:45	NBC Blue. Organ Recital..... NBC Red. Concert Ensemble..... COLUM. Symphony Orchestra.	Radio Guild..... Woman's Radio Review. U.S. Marine Band.	Roy Shields Orch..... Woman's Radio Review. Emery Deutsch Orch.	Piano Duo..... Woman's Radio Review. Columbia Salon Orch.	Musical Keys..... Woman's Radio Review. Curtis Institute.	Marias Certo Matinee Grab Bag.	Saturday Songsters..... Concert Orch..... Bach Program.	
4 Eastern ST	:00	NBC Blue. Sousa Men's Band..... NBC Red. Dramatic Sketch..... COLUM. Symphony Orchestra.	Betty and Bob..... Don Bigelow Orch. U. S. Navy Band.	Betty and Bob..... Don Bigelow Orch. U. S. Navy Band.	Betty and Bob..... Pop Concert..... Manhattan Moods.	Betty and Bob..... Cosmopolitans..... To Be Announced.	Betty and Bob..... Cosmopolitans..... To Be Announced.	Miniature Theatre..... Concert Orch..... George Hall Orch.	
	:15	NBC Blue. Alice Joy, Dream Girl. Instrumental Trio..... NBC Red. Symphony Orchestra..... COLUM. Alice Joy, Dream Girl. Story Program..... Meudry Parade.	The Singing Stranger. Don Bigelow Orch. U. S. Navy Band.	The Singing Stranger. Don Bigelow Orch. U. S. Navy Band.	Alice Joy, Dream Girl. Pop Concert..... Manhattan Moods.	Alice Joy, Dream Girl. John Winters, Organ. Curtis Institute.	The Singing Stranger. Nellie Revell..... The Dictators.	Miniature Theatre..... Concert Orch..... George Hall, Orch.	
	:30	NBC Blue. Princess Pat Players. Pedro Via Orch..... NBC Red. Symphony Orchestra..... COLUM. Princess Pat Players. Pedro Via Orch..... Symphony Orchestra.	Cosmopolitans..... To Be Announced.	Alice Joy, Dream Girl. Jimmy Rogers, Songs. Bob Standish Orch.	Educational Program. Art Tatem, Pianist. Science Service.	Musical Magic..... Hazel Glenn, Sopr. Bob Standish, Bar.	Temple of Song..... Concert Orch..... U. S. Army Band.	Terrace Gardens Orch. Lady Next Door..... Russian Gypsy Orch.	
	:45	NBC Blue. Princess Pat Players. Pedro Via Orch..... NBC Red. Symphony Orchestra..... COLUM. Princess Pat Players. Pedro Via Orch..... Symphony Orchestra.	High and Low..... Lady Next Door..... To Be Announced.	Brown Palace Orch..... Lady Next Door..... Four Showmen.	High and Low..... Lady Next Door..... Emery Deutsch Orch.	Musical Magic..... Lady Next Door..... Columbia Salon Orch.	Temple of Song..... Concert Orch..... U. S. Army Band.	Terrace Gardens Orch. Lady Next Door..... Russian Gypsy Orch.	
5 Eastern ST	:00	NBC Blue. National Vespers..... NBC Red. John B. Kennedy..... COLUM. Chicago Knights.	Your Health..... Don Bigelow Orch. The Dictators.	Brown Palace Orch..... The Music Box..... The Dictators.	Roy Shields Orch..... Educational Program. The Dictators.	Fed. Women's Clubs. Meredith Willson Orch. George Hall Orch.	William Lundell..... Madame Sylvia..... Frank Bailey Orch.	Kindergarten Program Don Bigelow Orch..... Pancho Orch.	
	:15	NBC Blue. National Vespers..... NBC Red. The Sylvan Trio..... COLUM. Tony Wons.	Jackie Heller, Tenor. Don Bigelow Orch. Skippy.	Jackie Heller, Tenor. The Music Box..... Skippy.	Roy Shields Orch..... Ted Black Orch..... Skippy.	Max Dolin, Violinist. Meredith Willson Orch. Skippy.	Jackie Heller, Tenor. O. Mazzucci, Cello..... Skippy.	Kindergarten Program Don Bigelow Orch..... Pancho Orch.	
	:30	NBC Blue. Musical Program. Hoover Sentinels..... NBC Red. Crumit and Sanderson..... COLUM. Musical Program. Hoover Sentinels..... Crumit and Sanderson.	The Singing Lady. Frank Merriwell..... All American Boy.	Singing Lady..... The Tattered Man..... All American Boy.	Singing Lady..... Frank Merriwell..... All American Boy.	The Singing Lady. Winnie the Pooh..... All American Boy.	Singing Lady..... Frank Merriwell..... All American Boy.	Piano Duo..... Economics..... All American Boy.	
	:45	NBC Blue. Musical Program. Hoover Sentinels..... NBC Red. Hoover Sentinels..... COLUM. Musical Program. Hoover Sentinels..... Crumit and Sanderson.	Little Orphan Annie..... Bunkhouse Songs..... B. Nolan, N. Sherr.	Little Orphan Annie..... Children's Program..... String Trio.	Little Orphan Annie..... Armaclair Quartet..... Maurice Sherman Orch.	Joe White, Tenor..... Clarence Wheeler Orch.	Musical Drama..... String Trio.	Little Orphan Annie..... Economics..... Tito Guizar, Tenor.	

Night PROGRAMS (Pacific Coast)

Quarter Hour Periods in Pacific Standard Time

	Sunday	Monday	Tuesday	Wednesday	Thursday	Friday	Saturday
4:00 P. M. Pacific ST	NBCOran. Chose & Sanborn Hr. Community Forum. Doc Savage Adven.	Yeast Foamers. Josef Hornik Orch. Eastman and Evans.	Fashion Program. Clyde Doerr Orch. The Troopers.	Baron Munchausen. Arion Trio. Little Theatre of Air.	Fleischmann Hour. Arion Trio. Emey Deutsch Violin	Well Dressed Woman Studio Chatter. Hodge Podge Lodge.	Paul Carson, Organ. Hollywood on the Air. Morton Downey.
	NBCOran. Chose & Sanborn Hr. Community Forum. Voice of Columbia.	Yeast Foamers. Josef Hornik Orch. Songs at Eventide.	Harmonica Program. Clyde Doerr Orch. Correct English.	Baron Munchausen. Arion Trio. Little Theatre of Air.	Fleischmann Hour. Arion Trio. NRA Speaker.	Piano Vignettes. Studio Chatter. Hodge Podge Lodge.	Serenata. Peasant Band. Morton Downey.
	NBCOran. Chose & Sanborn Hr. Silhouettes. Voice of Columbia.	Art and Music. Piano Pals. California Melodies.	Back Stage Chatter. Sarah Kreindler. Musical Variety.	Children's Hour. Josef Hornik Orch. Broadway Melodies.	Fleischmann Hour. Marshall's Mavericks. Amateur Cracksmen.	Art Revue. Juvenile Programs. Real Life Dramas.	Serenata. Hanis Across Border. Gus Arnheim.
	NBCOran. Chose & Sanborn Hr. Silhouettes. Voice of Columbia.	Little Orphan Annie. Canzonetta. California Melodies.	Little Orphan Annie. John Toftoli Accor. Musical Variety.	Little Orphan Annie. Josef Hornik Orch. Broadway Melodies.	Fleischmann Hour. Marshall's Mavericks. Amateur Cracksmen.	Little Orphan Annie. Juvenile Program. Knaves and a Queen.	Little Orphan Annie. Barbara McKeley. Hs. Dance Music.
5:00 Pacific ST	NBCOran. Man. Merry-Go-Round Silhouettes. Carl Hoffmayer Orch.	Sinclair Minstrels. News Broadcast. Chesterfield Program.	Arion Trio. News Broadcast. Theatre of the Air.	Arion Trio. News Broadcast. Chesterfield Program.	Arion Trio. News Broadcast. Mark Warnow Orch.	Phil Harris, Orch. News Broadcast. Little Theatre of Air.	Colgate House Party. News Broadcast. Chesterfield Program.
	NBCOran. Man. Merry-Go-Round Music Old and New. Carl Hoffmayer Orch.	Sinclair Minstrels. Frank Merriwell. Chesterfield Program.	Arion Trio. Organ Concert. Piano Trios.	Arion Trio. Frank Merriwell. Chesterfield Program.	Arion Trio. Sax Appeal. Mark Warnow Orch.	Phil Harris, Orch. Frank Merriwell. Sports Authority.	Colga's House Party. Tom Coakley, Orch. Chesterfield Program.
	NBCOran. Album Familiar Music. Music Old and New. Waring Pennsylvanians.	Dobbie Ship of Joy. Paul Carson, Organ. Charlie Lung Gang.	Texaco Fire Chief. Organ Concert. To Be Announced.	Love Story Program. Piano Pals. Charlie Lung Gang.	Star's Human Behavior. Harry Stanton Basso. Waring Pennsylvanians.	Phil Baker, Armour. Organ Concert. Johnny Greene Orch.	Beatrice Fairfax. Dot Kay, Contralto. Dramatic Guild.
	NBCOran. Album Familiar Music. Henry M. Hyde, Astr. Waring Pennsylvanians	Dobbie, Ship of Joy. Paul Carson, Organ. The Zero Hour.	Texaco Fire Chief. Behind the Footlight. To Be Announced.	Love Story Program. Piano Pals. To Be Announced.	Ricardo, Violin. Behind the Footlights. Waring Pennsylvanians.	Phil Baker, Armour. Ross, Dog Stories. John/ Greene Orch.	Beatrice Fairfax. Organ Concert. Dramatic Guild.
6:00 Pacific ST	NBCOran. Chevrolet Program. Gunnar Johansen. Wayne King's Orch.	Contented Program. Mark Hopkins Orch. Wayne King Orch.	Beauty Box Theatre. Robt. Nurok, Ensem. Camel Caravan.	Corn Cob Pipe Club. Robt. Nurok, Ensem. Byrd Broadcast.	Paul Whiteman, Orch. Robt. Nurok, Ensem. Camel Caravan.	First Nighter. Robt. Nurok, Ensem. Schiltz Program.	Terraplan Travelcade. Robt. Nurok, Ensem. To Be Announced.
	NBCOran. Chevrolet Program. Gunnar Johansen. Wayne King's Orch.	Contented Program. Mark Hopkins Orch. Wayne King Orch.	Beauty Box Theatre. Robt. Nurok, Ensem. Camel Caravan.	Corn Cob Pipe Club. Robt. Nurok, Ensem. Byrd Broadcast.	Paul Whiteman, Orch. Robt. Nurok, Ensem. Camel Caravan.	First Nighter. Robt. Nurok, Ensem. Schiltz Program.	Terraplan Travelcade. Robt. Nurok, Ensem. To Be Announced.
	NBCOran. Hall of Fame. Paul Carson, Organ. Jean Ellington.	Demi-Tasse Revue. Safety First. To Be Announced.	Beauty Box Theatre. HRA Talks. Conflict.	Doric Quartet. Clyde Doerr Orch. A. Spalding, Violin.	Paul Whiteman, Orch. Federal Business Talk. Sleepy Valley.	General Tire Co. Progr. Clyde Doerr Orch. Edgeway: Beach Or.	Barn Dance. Piano Pals. Rhythm Revue.
	NBCOran. Hall of Fame. Paul Carson, Organ. Salon Moderne.	Demi-Tasse Revue. Nanette LaSalle, Songs. Musical Album.	Beauty Box Theatre. Emil Polak Orch. Harlem Serenade.	Chester Rowell. Clyde Doerr Orch. A. Spalding, Violin.	Paul Whiteman, Orch. Paul Martin, Banjo. The Playboys.	General Tire Co. Progr. Clyde Doerr Orch. Edith Murray.	Barn Dance. Piano Pals. Rhythm Revue.
7:00 Pacific ST	NBCOran. Wendell Hall. Quartet Time. Salon Moderne.	Amos 'n' Andy. Clyde Doerr Orch. "Fats" Waller Song	Amos 'n' Andy. Emil Polak Orch. To Be Announced.	Amos 'n' Andy. Nanette LaSalle, Songs. Nick Lucas, Troub.	Amos 'n' Andy. Nanette LaSalle, Songs. Vera Van, Songs.	Amos 'n' Andy. Cleft Dwellers. Minute Melodies.	Educational Program. Sylvia Fross.
	NBCOran. Walter Winchell. Quartet Time. Henry Busse Orch.	Gene and Glenn. Clyde Doerr Orch. Old Music Master.	Gene and Glenn. Emil Polak, Orch. Buccaneers.	Knight's Cuckoos. Agriculture Today. Buccaneers.	Gene and Glenn. S. F. Civic Program. Chas. Barnet Orch.	Gene and Glenn. Sport's Revue. Isham Jones, Orch.	Barn Dance. Vocal and Instr. Champions Parade.
	NBCOran. Josef Hornik Orch. The Merry-makers. Mme. Schumann-Hei	Voice of Firestone. Stars of Hollywood. Military Band.	Memory Lane. Nat. Radio Forum. Chas. Barnet Orch.	Story of San Fran. Stras of Hollywood. Guy Lombardo Orch.	Winning the West. Ghost Story. Dickerson Band.	Sax Appeal. Stars of Hollywood. True Story Program.	Emil Polak Orch. Bal Tabarin Orch. Peter the Great.
	NBCOran. Phil Harris Orch. Josef Hornik Orch. The Merry-makers.	Voice of Firestone. Stanford U. Program. Isham Jones Orch.	Memory Lane. Nat. Radio Forum. Voice of Experience.	Story of San Fran. Stras of Hollywood. Guy Lombardo Orch.	Winning the West. Ghost Story. Guy Busse Orch.	Dr. Seth Maker. Nanette LaSalle, Songs. True Story Program.	Emil Polak Orch. Bal Tabarin Orch. Peter the Great.
8:00 Pacific ST	NBCOran. Adven. in Health. Rudy Seiger's Orch. The Merry-makers.	Shell Show. Josef Hornik Orch. Blue Monday Jamboree.	Ben Bernie's Orch. Chamber of Com. Harry Sosnik Orch.	Hour of Smiles. Stringwood Ensemble. Leaders of Tomorrow.	Standard Symphony. Ralph Kirbery, Songs. Jean Elington.	Caswell Concert. Tom Gentry Orch. True Story Program.	Floyd Gibbons. Cleft Dwellers. Ted Fio Rito Orch.
	NBCOran. Hollywood on the Air. Rudy Seiger's Orch. The Merry-makers.	Shell Show. Josef Hornik Orch. Blue Monday Jamboree.	Ben Bernie's Orch. John Teel, Baritone. Harry Sosnik Orch.	Hour of Smiles. Stringwood Ensemble. Leaders of Tomorrow.	Standard Symphony. Jimmy Lunceford Orch. Reggie Childs Orch.	One Man's Family. Carl Hoffmayer Orch.	S. Kreindler, violin. Carefree Carnival. Ted Fio Rito Orch.
	NBCOran. Hollywood on the Air. Bal Tabarin Orch. Henry Busse Orch.	Shell Show. NBC Drama Hour. Blue Monday Jamboree.	Death Valley Days. Herbert Kay Orch. Elizabeth Arden.	Hour of Smiles. Police Chief Quinn. George Hall Orch.	Standard Symphony. Eno Crime Clues. Charlie Davis Orch.	One Man's Family. Eno Crime Clues. Sam Robbins Orch.	Russian Troubadours. Carefree Carnival. Gus Arnheim Orch.
	NBCOran. Hollywood on the Air. Bal Tabarin Orch. Charlie Davis Orch.	Shell Show. NBC Drama Hour. Blue Monday Jamboree.	Death Valley Days. Herbert Kay Orch. Elizabeth Arden.	Hour of Smiles. Police Chief Quinn. George Hall Orch.	Standard Symphony. Eno Crime Clues. Charlie Davis Orch.	Eno Crime Clues. Sam Robbins Orch.	Russian Troubadours. Carefree Carnival. Gus Arnheim Orch.
9:00 Pacific ST	NBCOran. Blackhawk Rest. Orch. U. of C. Program. Aaronson Commanders	In Old Brazil. Armand Program. Cora Scott, Fashions.	The Big Ten. Hodge Lucas Orch. Clyde Lucas Orch. Hodge Podge Lodge.	Sports Headliners. Blackhawk Rest. Or. Gus Arheim Orch.	Maxwell House. Mark Hopkins Orch. Jack Russell Orch.	Meredith Willson Orch. Clyde Lucas Orch. Gus Arnheim Orch.	Blackhawk Rest. Or. Blue Moonlight. Harry Sosnik Orch.
	NBCOran. Blackhawk Rest. Orch. U. of C. Program. Aaronson Commanders	Mark Hopkins Orch. Clyde Lucas Orch. Jack Russell Orch.	The Big Ten. Hodge Lucas Orch. Clyde Lucas Orch. Hodge Podge Lodge.	Harry Barres Orch. Parade Book. Jack Russell Orch.	Maxwell House. Mark Hopkins Orch. J. Chm. of Com.	Meredith Willson Orch. Dramatic Program. Cora Scott, Fashions.	Blackhawk Rest. Or. Blue Moonlight. Harry Sosnik Orch.
	NBCOran. Reader's Guide. Frankie Masters Orch. Jack Russell Orch.	Meredith Willson Orch. Aaranson Commanders	Oriental Gardens Orch. Mark Hopkins Orch. Aaranson Commanders	Tom Coakley Orch. Marshall's Mavericks. Aaranson Commanders	Tom Coakley Orch. Rainbow Harmonies. Aaranson Commanders	Tom Coakley Orch. Spiritual Fantasy. Aaranson Commanders	Tom Coakley Orch. Clyde Lucas Orch. Earl Hoffman Orch.
	NBCOran. Reader's Guide. Frankie Masters Orch. Jack Russell Orch.	Meredith Willson Orch. Frankie Masters Orch. Aaranson Commanders	Oriental Gardens Orch. Mark Hopkins Orch. Aaranson Commanders	Tom Coakley Orch. Marshall's Mavericks. Aaranson Commanders	Tom Coakley Orch. Rainbow Harmonies. Aaranson Commanders	Tom Coakley Orch. Spiritual Fantasy. Aaranson Commanders	Tom Coakley Orch. Clyde Lucas Orch. Earl Hoffman Orch.
10:00 Pacific ST	NBCOran. Richfield News Flashes. Night Court. News Editor of Air.	Richfield News Flashes. Night Court. News Editor of Air.	Richfield News Flashes. Night Court. News Editor of Air.	Richfield News Flashes. Night Court. News Editor of Air.	Richfield News Flashes. Night Court. News Editor of Air.	Richfield News Flashes. Night Court. News Editor of Air.	Richfield News Flashes. Night Court. News Editor of Air.
	NBCOran. Paul Carson, Organ. Herbert Kay Orch. Gus Arnheim Orch.	Tom Coakley Orch. Night Court. Harry Jackson Orch.	Tom Coakley Orch. Night Court. Harry Jackson Orch.	Mark Hopkins Orch. Night Court. Harry Jackson Orch.	Mark Hopkins Orch. Night Court. Harry Jackson Orch.	Mark Hopkins Orch. Night Court. Harry Jackson Orch.	Mark Hopkins Orch. Night Court. Harry Jackson Orch.
	NBCOran. Paul Carson, Organ. Emil Polak Orch. Gus Arnheim Orch.	Tom Coakley Orch. Night Court. The Mummies, Drama	Tom Coakley Orch. Night Court. The Mummies, Drama	Mark Hopkins Orch. Night Court. Gus Arnheim Orch.	Mark Hopkins Orch. Night Court. Gus Arnheim Orch.	Mark Hopkins Orch. Night Court. Gus Arnheim Orch.	Mark Hopkins Orch. Night Court. Gus Arnheim Orch.
	NBCOran. Paul Carson, Organ. Emil Polak Orch. Gus Arnheim Orch.	Tom Coakley Orch. Night Court. The Mummies, Drama	Tom Coakley Orch. Night Court. The Mummies, Drama	Mark Hopkins Orch. Night Court. Gus Arnheim Orch.	Mark Hopkins Orch. Night Court. Gus Arnheim Orch.	Mark Hopkins Orch. Night Court. Gus Arnheim Orch.	Mark Hopkins Orch. Night Court. Gus Arnheim Orch.
11:00 Pacific ST	NBCOran. Harry Barres Orch. Midnight Melodies. Midnight Moods.	Organ Concert. Ted Fio Rito Orch. Aaranson Commanders	Bal Tabarin Orch. Ambass. Hotel Orch. Aaranson Commanders	Bal Tabarin Orch. Ambass. Hotel Orch. Aaranson Commanders	Bal Tabarin Orch. Ambass. Hotel Orch. Aaranson Commanders	Bal Tabarin Orch. Ambass. Hotel Orch. Aaranson Commanders	Organ Concert. Ambass. Hotel Orch. Aaranson Commanders
	NBCOran. Harry Barres Orch. Midnight Melodies. Midnight Moods.	Organ Concert. Ted Fio Rito Orch. Aaranson Commanders	Bal Tabarin Orch. Ambass. Hotel Orch. Aaranson Commanders	Bal Tabarin Orch. Ambass. Hotel Orch. Aaranson Commanders	Bal Tabarin Orch. Ambass. Hotel Orch. Aaranson Commanders	Bal Tabarin Orch. Ambass. Hotel Orch. Aaranson Commanders	Organ Concert. Ambass. Hotel Orch. Aaranson Commanders
	NBCOran. Harry Barres Orch. Midnight Melodies. Midnight Moods.	Club Victor Orch. Organ Concert. To Be Announced.	Club Victor Orch. Organ Concert. To Be Announced.	Carol Lofner Orch. Organ Concert. Midnight Moods.	Carol Lofner Orch. Organ Concert. Midnight Moods.	Club Victor Orch. Organ Concert. To Be Announced.	Club Victor Orch. Organ Concert. To Be Announced.
	NBCOran. Harry Barres Orch. Midnight Melodies. Midnight Moods.	Club Victor Orch. Organ Concert. To Be Announced.	Club Victor Orch. Organ Concert. To Be Announced.	Carol Lofner Orch. Organ Concert. Midnight Moods.	Carol Lofner Orch. Organ Concert. Midnight Moods.	Club Victor Orch. Organ Concert. To Be Announced.	Club Victor Orch. Organ Concert. To Be Announced.

hours of each day are in black horizontal panels, from six to midnight New York time (3 to 9 Pacific Coast). Consider only the time in your own time zone.

This table covers six hours of evening broadcasting for each day of the week, each day being in a vertical panel and the six hours of each day are in black horizontal panels, from six to midnight New York time (3 to 9 Pacific Coast). Consider only the time in your own time zone.

IF YOU LIVE IN NORTH AMERICA, HERE'S YOUR

EVENING

In this column time is shown in five zones, each hour divided into quarter hour periods and each of these showing the four chains whose programs are listed on these pages.

76543:00 NBC Blue, NBC Red, COLUM. CANADA. Atlantic Time, Eastern Time, Central Time, Mountain Time, Pacific Time.

87654:00 NBC Blue, NBC Red, COLUM. CANADA. Atlantic Time, Eastern Time, Central Time, Mountain Time, Pacific Time.

98765:00 NBC Blue, NBC Red, COLUM. CANADA. Atlantic Time, Eastern Time, Central Time, Mountain Time, Pacific Time.

109876:00 NBC Blue, NBC Red, COLUM. CANADA. Atlantic Time, Eastern Time, Central Time, Mountain Time, Pacific Time.

1110987:00 NBC Blue, NBC Red, COLUM. CANADA. Atlantic Time, Eastern Time, Central Time, Mountain Time, Pacific Time.

12111098:00 NBC Blue, NBC Red, COLUM. CANADA. Atlantic Time, Eastern Time, Central Time, Mountain Time, Pacific Time.

SUNDAY EVENING PROGRAMS

Table with columns: Origin, TITLE, Zones. Includes programs like Egon Petri, Pianist; Hill Billy Heart Throbs; Kay-Seven; Hampton Institute Choir; Musical Revue; The Bakers' Broadcast; Wendell Hall; Musical Revue; Chase & Sanborn Hour; Chateau Laurier Musicale; Gulf Headliners; Manhattan Merry-Go-Round; American Album Familiar Music; Madame Schumann-Heink; Wayne King Orch.; Ennio Bolognini; Little Jack Little; Ben Pollack Orch.; Johnny Johnson Orch.; The Western Singer.

MONDAY EVENING PROGRAMS

Table with columns: Origin, TITLE, Zones. Includes programs like Irene Beasley, Songs; Peter Van Steeden Orch.; Wash. U. S. Army Band; Peter Van Steeden Orch.; Edward Wurtzebach Orch.; The Singing Lady; Grandmother's Trunk; Charles Barnet Orch.; Three Hearts in Harmony; Lowell Thomas; News; Horseshoe Philosophy; Dixie Circus; Amos 'n' Andy; Goodrich Baseball Scores; Jack Russell Orch.; Chas. Dornberger Orch.; Baby Rose Marie, Songs; Gene and Glenn; Billy Hayes Orch.; Chas. Dornberger Orch.; Mario Cozzi, Baritone; The Mollo Show; Music on the Air; Ted Andrews Orch.; Dramatic Sketch; The Goldbergs; Boake Carter, News; Yeast Foams; Socoyland Sketches; Mary Eastman, Soprano; Caprice; Socoyland Sketches; Edwin C. Hill, News; Maple City Male Quartet; The Voice of Firestone; Bing Crosby; Musicale; Babe Ruth Baseball Talk; The Voice of Firestone; Bing Crosby; Beautiful Lady; Sinclair Greater Minstrels; A & P Gypsies; Andre Kostelanetz Orch.; Melody Lane; Sinclair Greater Minstrels; A & P Gypsies; Andre Kostelanetz Orch.; Melody Lane; Jack Frost, Melody Moments; Capt. Dobbsie, Ship of Joy; The Big Show; Melody Lane; Jack Frost, Melody Moments; Capt. Dobbsie, Ship of Joy; The Big Show; Melody Lane; Walter Damosch Orch.; Contented Program; Wayne King Orch.; Masters of Music; Water Damosch Orch.; Contented Program; Wayne King Orch.; Masters of Music; Walter Damosch Orch.; Pan American Concert; Musical Album; Hotel Pierre Orch.; Siberian Singers; Hotel Pierre Orch.; Amos 'n' Andy; Mary Courtland, Soprano; 'Fats' Waller, Songs; Hotel Pierre Orch.; Poet Prince; Gene and Glenn; H. V. Kaltenborn; Jack Denny Orchestra; Clyde Lucas Orchestra; Isham Jones Orchestra; Moonlight on the River; Jack Denny Orchestra; Clyde Lucas Orchestra; Enoch Light Orchestra; Moonlight on the River.

TUESDAY EVENING PROGRAMS

Table with columns: Origin, TITLE, Zones. Includes programs like Angelo Ferdinando Orch.; Mme. Frances Alda; Buck Rogers in 25th Century; Angelo Ferdinando Orch.; Mme. Frances Alda; Bob Nolan and Norm Sherr.; The Ivory Stamp Club; Mid-Week Hymn Sing.; M. Raginsky Ensemble; Lowell Thomas; News; Mary Small, Juvenile Songs; Enoch Light Orch.; Xylophone and Piano; Amos 'n' Andy; Goodrich Baseball Scores; Morton Downey, Tenor; Rex Battle Orch.; You and Your Government; Gene and Glenn; Meyer Davis Orch.; hex Battie Orch.; You and Your Government; Tastyest Seers; Silver Dust Serenaders; Flute, Violin, Cello and Organ; Grace Hays, Songs; The Goldbergs; Boake Carter, News; Eno Crime Clues; Leo Reisman Orchestra; The Troopers; Violin and Violoncelles; Eno Crime Clues; Leo Reisman Orchestra; Voice of Experience; Violin and Violoncelles; Hudson Vocallians; Wayne King Orch.; Abe Lyman Orch.; Radio Theatre Guild; Hudson Vocallians; Wayne King Orch.; Abe Lyman Orch.; Radio Theatre Guild; Musical Memories; Ben Bernie's Orchestra; Fiedler Martin Orchestra; Westminster Choir; Musical Memories; Ben Bernie's Orchestra; James Thurber, Humorist; Westminster Choir; Eddie Duchin Orchestra; Texaco Fire Chief Program; Minneapolis Symphony Orch.; Meodic Strings; Eddie Duchin Orchestra; Texaco Fire Chief Program; Minneapolis Symphony Orch.; Meodic Strings; Palmer House Program; Beauty Box Theatre; The Camel Caravan; Nautical Nonsense; Palmer House Program; Beauty Box Theatre; The Camel Caravan; Nautical Nonsense; To Be Announced; Beauty Box Theatre; Conflict by Stribling; Billy Bissett Orch.; To Be Announced; Beauty Box Theatre; Billy Bissett Orch.; Harlem Serenade; Amos 'n' Andy; Fox Fur Trappers; Harlem Serenade; Billy Bissett Orch.; The Poet Prince; Emil Coleman Orch.; News Service; Hotel Biltmore Orch.; National Radio Forum; Chas. Barnet Orch.; Don Pedro, Gypsies; Hotel Biltmore Orch.; National Radio Forum; Charlie Davis Orchestra; Don Pedro, Gypsies.

MOVIE STARS WHO BROADCAST



IRENE DUNNE



LOUISE BENNETT



KAY FRANCES



AL JOLSON

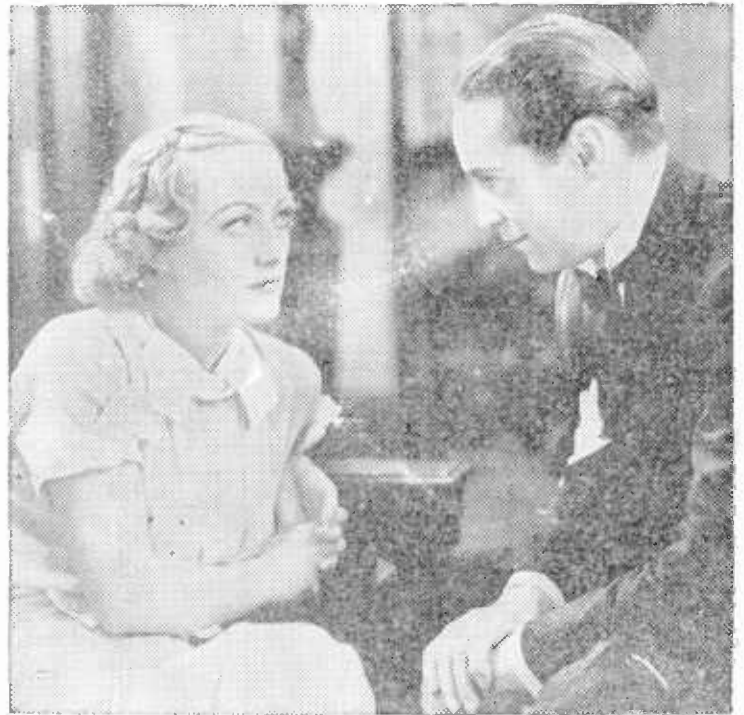


JOHN BARRYMORE



CLARK GABLE

One of the most romantic pairs of the silver screen, Joan Crawford and Franchot Tone, are seen on the right. Below is the popular comedy team of Mary Boland and Charles Ruggles, who have pleased the screen fans for so long.



HELEN HAYES



IRENE RICH

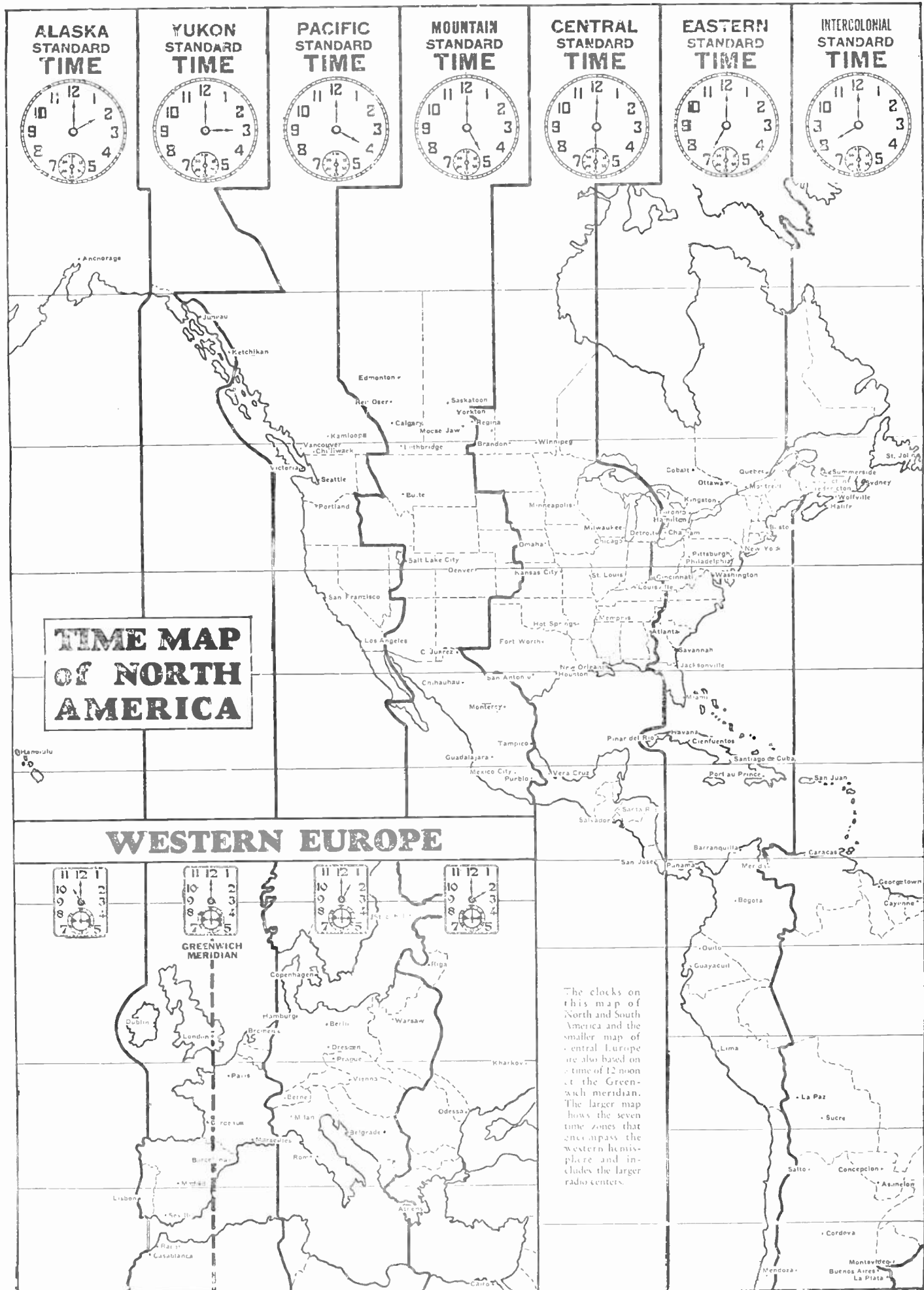


Table listing radio stations in Alabama, Alaska, Arizona, Arkansas, California, Colorado, Connecticut, Delaware, Florida, Georgia, Idaho, Illinois, Indiana, Iowa, Kansas, Kentucky, Louisiana, Maine, Maryland, Massachusetts, Michigan, Minnesota, Missouri, Montana, Nebraska, Nevada, New Hampshire, New Jersey, New Mexico, New York, North Carolina, North Dakota, Ohio, Oklahoma, Oregon, Pennsylvania, Rhode Island, South Carolina, South Dakota, Tennessee, Texas, Utah, Vermont, Virginia, Washington, West Virginia, Wisconsin, and Wyoming.

Table listing radio stations in Louisiana, Maine, Maryland, Massachusetts, Michigan, Minnesota, Missouri, Montana, Nebraska, Nevada, New Hampshire, New Jersey, New Mexico, New York, North Carolina, North Dakota, Ohio, Oklahoma, Oregon, Pennsylvania, Rhode Island, South Carolina, South Dakota, Tennessee, Texas, Utah, Vermont, Virginia, Washington, West Virginia, Wisconsin, and Wyoming.

MAKE YOUR

WITH THREE CROSS-INDEXED LOGS:

Each of these has its own purpose. The channel listing (Station Finder), most used, enables you, by noting the reading on your dial, to instantly identify the station you hear. The sectional listing on this

WHITMAN'S RAPID STATION FINDER (Kilocycle Listing)

Whitman's Rapid Station Finder is universally used throughout North America and is so simple as to be practically self-explanatory. It will be noticed that all channels in the broadcast range are set off in columns of ten each, so that the eye can locate the desired number quickly...

These Local Channels Contain the Low-Powered

Table listing local channels with columns for CALL, (Location), and POWER. Includes entries for CHANNEL 100, CHANNEL 120, CHANNEL 121, and CHANNEL 131.

Every Broadcasting Station in North

Every broadcasting station in North America is listed here, showing call and location—both geographically and on the air waves (channels). They are segregated by

Table listing radio stations in New York, North Carolina, North Dakota, Ohio, Oklahoma, Oregon, Pennsylvania, Rhode Island, South Carolina, South Dakota, Tennessee, Texas, Utah, Vermont, Virginia, Washington, West Virginia, Wisconsin, and Wyoming.

LP YOU DIALING EASY

KILOCYCLE, ALPHABETICAL, SECTIONAL

double page, is principally for reference, and the four-page alphabetical list, following, gives complete station information...

MAKES STATION IDENTIFICATION FAST AND SIMPLE

a power of from 5,000 to 50,000 watts. These are the highest class stations. The lowest class stations intended for a service limited to the community in which they are located...

Stations—List Continued From Rapid Station Finder

Table with columns: CALL (Location), POWER, CALL (Location), POWER. Lists various radio stations and their call signs and power levels across different states.

America in These (Sectional) Pages:

countries, by states or provinces and numerically by cities. The number of stations in each country and state is indicated by the figures in parenthesis.

Table listing radio stations across various US states and territories, including columns for City, Call, and Channel.

City Call Channel

Table listing radio stations in Utah (3), Virginia (11), Wash. (22), West Va. (5), Wisconsin (16), Wyoming (2), Bahamas (2), Costa Rica (15), and Haiti (1).

CANADA (69)

Table listing radio stations in Canada across provinces like Alberta (7), Br. Col. (11), Victoria, CFTC (145), Manitoba (3), New Brun. (3), Nova Scotia (4), Ontario (22), and Saskatchewan (7).

MEXICO (46)

Table listing radio stations in Mexico across states like Aguascal. (2), Jalisco (2), Lower Cal. (3), Chihuahua (3), Coahuila (4), and Dist. Fed. (13).

CUBA (57)

Table listing radio stations in Cuba across various cities and regions, including Dom. Rep. (5), Guatemala (1), Honduras (2), Miquel'n Is. (1), Newf. (6), and Salvador (1).

150 U. S. Local Channel
KREG-KDB
 Santa Ana..(100)..Santa Barbara
 WMBQ-WCNW-WWRL
 Brooklyn, Brooklyn, Woodside, 100
 CRCS—Chicoutimi, Que100
 KPJM—Prescott, Ariz.100
 KNOW—Austin, Texas100
 WKBB—East Dubuque, Ill.100
 KPQ—Wenatchee, Wash. 100

151 Canadian Channel
CFRC-CKCR
 Kingston, Ont. (100) .Kitchener

**WHITMAN'S
 RAPID
 STATION
 FINDER**

Copyright by
 W. R. WHITMAN
 Kirkland, Wash.

A complete listing of
 all North American radio
 stations by channels. Local
 channel stations continued
 on following page.

54 Canadian Channel
CJRM
 Moose Jaw, Sask., 1000

55 U. S. Regional Chan.
KFDY-KFYR
 Brookings..(3,000)..Bismarck
 XEY—Merida, Mexico5000
 KOAC—Corvallis, Ore1000
 WGR—Buffalo, N. Y.1000
 WRC—Cincinnati, Ohio1000
 KFLO—(St. Louis, 500) ..KSD
 WDEV—Waterbury, Vt. 500
 XFA—Aguascalientes, Mex. 5

56 U. S. Regional Chan.
WIND—Gary1000
KLZ—Denver 1000
 XEMO—Tijuana, Mexico2500
 WQAM—Miami, Fla.1000
 KWTO—Springfield, Mo.1000
 KTAB—Oakland, Calif.1000
 WNOX—Knoxville, Tenn.1000
 KFDM—Beaumont, Texas500
 WFI—(Philadelphia, 500) ..WLIT
 XEAO—Mexicali, Mexico250

57 U. S. Regional Chan.
WMCA—New Y'k500
KVI—Tacoma 500
 WNAX—Yankton, S.D.1000
 WWNC—Asheville, N.C.1000
 KMTR—Los Angeles 500
WOSU-WKBN
 Columbus, 1000; Youngstown, 500
 KGKO—Wichita Falls, Tex. 250
 WSYR—Syracuse, N. Y. 250
 FQN—St. Pierre, Miq. Is.250

58 U. S.-Canada Shared
WIBW-KSAC
 Topeka, 1000; Manhattan, 500
 WTAG—Worcester, Mass.750
 KMJ—Fresno, Calif.500
 CKUA—Edmonton 500
 WCHS—Charleston, W. Va.500
 WDBO—Orlando, Fla.250
 CKCL—Toronto, Ont.100

59 U. S. Regional Chan.
XEPN
 Piedras Negras, Mexico, 50,000
 CMW—Havana 1400
 KHQ—Spokane1,000
 WEEI—Boston1,000
 WKZO—K'P'maz.1,000
 WOW—Omaha1,000

60 U. S.-Canada Shared
KFSD
 San Diego, Calif., 1000
HIX—Santo Domingo 1000
WICC-WCAC
 Bridgeport, Conn., (500) ..Storrs, Conn
CBS—New York, N. Y. 500
 WIBC—Indianapolis, Ind. 500
 WISN—Milwaukee, Wis. 500
 WJZ—Jacksonville, Fla. 500
 WPTX—Fort Worth, Tex. 500
 WTTW—Chicago, Ill. 500
 WUP—Portland, Me. 500
 WYD—Denver, Colo. 500

61 U. S. Regional Chan.
KFRC
 San Francisco, 1000
WDAF—Kansas City 1000
 XFX—Mexico City, Mex.500
 WJAY—Cleveland, Ohio500
 WIP—Philadelphia, Pa.500
 TIXA—San Jose, Costa Rica 8

62 U. S. Regional Chan.
KGW
 Portland, Ore., 1000
 WFLA—Clearwater 1000
 WTMJ—Milwaukee 1000
 WLBZ—Bangor, Me. 500
 KTAR—Phoenix, Ariz. 500
 VP2NF—Nassau, Bahamas ..()

63 U. S.-Canada Shared
CJGX—Yorkton 500
XEZ—Merida 500
CMQ-MCU
 250 (Havana, Cuba) ..150
CFBY—Charlottetown, PEI500
KTRH—Houston, Texas500
KFRU-WOS-WCBF
Columbia, Missouri, 1000; St. Louis, 500
 WJAZ—Jacksonville, Fla. 500
 WJAX—Jacksonville, Fla. 500
 WJAX—Jacksonville, Fla. 500
 WJAX—Jacksonville, Fla. 500

64 U. S. Cleared Channel
KFI
 LOS ANGELES, 50,000
 WOI—Ames, Iowa5000
 WAU—Columbus, Ohio500

65 U. S. Cleared Channel
WSM
 NASHVILLE, 50,000
 KPCC—Seattle, Wash.250

66 U. S. Cleared Channel
WEAF
 NEW YORK, 50,000
 RDN—San Salvador, Salvador, 500
 WAAW—Omaha, Nebraska500

67 U. S. Cleared Channel
WMAQ
 CHICAGO, 5,000
 XEBC—Aguascalientes, Mex.5000

68 U. S. Cleared Channel
KPO
 SAN FRANCISCO, 50,000
 WPTF—Raleigh, N. C.5,000
 KFEQ—St. Joseph, Mo.2,500
 CMAE—Havana, Cuba500

69 Canadian Channel
CFRB
 TORONTO, Ont., 10,000
 XET—Monterrey, Mexico500
 CJCJ—Calgary, Alta.100

70 U. S. Cleared Channel
WLW
 CINCINNATI, 50,000

71 U. S. Cleared Channel
WOR
 NEWARK, 50,000
 XEN—Mexico City, Mex.1,000
 KMPC—Beverly Hills, Cal.500
 TIFB—San Jose, Costa Rica ..30
 VSI—Grand Turk, Bahamas ..()

72 U. S. Cleared Channel
WGN
 CHICAGO, 50,000

73 Canadian Channel
CKAC
 MONTREAL, 5000
CMK
 HAVANA, Cuba, 3150
CJCA—Edmonton 1000
CFPL—London, Ont. 100

74 U. S. Cleared Channel
WSB
 ATLANTA, 50,000
 XE3—Villa Acuna, Mex.150,000
 KMMJ—Clay Center, Neb.1,000
 WHEB—Portsmouth, N. H.250
 KTRB—Modesto, Calif.250

75 U. S. Cleared Channel
WJR
 DETROIT, 10,000
 KGU—Honolulu, Hawaii2,500

76 U. S. Cleared Channel
WJZ
 NEW YORK, 50,000
 WEW—St. Louis1,000
 KXA—Seattle, Wash.250

77 U. S. Cleared Channel
WBBM-KFAB
 Chicago—25,000—Lincoln

78 U. S.-Canada Shared
KEYZ
 Mexico City, 10,000
 CMGQ—Havana, Cuba1000
 WEAU—Providence, R. I.500
 CMBS—Havana, Cuba150
 CHWK—Chilliwack, B. C.100
 CKPR—Fort William, Ont. 50
 WBB—Bismarck, N. D. 500
 WJAX—Jacksonville, Fla. 500
 WJAX—Jacksonville, Fla. 500
 WJAX—Jacksonville, Fla. 500
 WJAX—Jacksonville, Fla. 500

79 U. S. Cleared Channel
WGY-KGO
 SCHENECTADY, 50,000 and
 SAN FRANCISCO, 7,500

80 U. S. Cleared Channel
WBAP-WFAA
 Fort Worth—50,000—Dallas
 XFC—Aguascalientes, Mex.350
 VOAC—St. Johns, Newf'd.40
 TIGP—San Jose, Costa Rica ..75

81 U. S. Cleared Channel
WCCO
 MINNEAPOLIS, 50,000
 WNYC—New York, N. Y.500
 VDAS—St. Johns, Newf'd.100

82 U. S. Cleared Channel
WHAS
 LOUISVILLE, 50,000
 CMCG—Matanzas, Cuba30

83 U. S. Cleared Channel
KOA
 DENVER, 50,000
 WRUF—Gainesville, Fla.5000
WEEB—Reading, Penn.1000
 WJAX—Jacksonville, Fla. 500
 WJAX—Jacksonville, Fla. 500
 WJAX—Jacksonville, Fla. 500
 WJAX—Jacksonville, Fla. 500

84 Canadian Channel
CKLW
 Windsor, Ont., 5000
 CMC—Havana, Cuba500
 CJOC—Lethbridge, Alta. 100

85 U. S. Cleared Channel
KWKH-WWL
 Shreveport—10,000—New Orleans
 KIEV—Glendale, Cal.100

86 U. S. Cleared Channel
WABC
 NEW YORK, 50,000
 WHS—Kansas City 500
 TIVL—San Jose, Costa Rica ..30

87 U. S. Cleared Channel
WLS-WENR
 CHICAGO, 50,000

88 U. S.-Canada Shared
 CRCO—Ottawa, Ont. 1000
 KLX—Oakland 1000
 WCBE—Meridian, Miss.500
 WSUI—Iowa City, Iowa500
WCBJ-WQAN 500
KPOF-KFKA
900 (San Francisco) 1,200
 Denver, Colo. 500-500-Graves, Colo.
 CUCB—Sunnyvale, N. S. 50
 WJAX—Jacksonville, Fla. 500
 WJAX—Jacksonville, Fla. 500
 WJAX—Jacksonville, Fla. 500
 WJAX—Jacksonville, Fla. 500

89 U. S.-Canada Shared
KFPY
 Spokane, 1000
KFNF-KUSD-WILL
 Shenandoah, Vermillion, Urb'na, 500
 WJAR—Providence, R. I.500
 KARK—Little Rock, Ark.250
 KSEI—Pocatello, Idaho250
 WMMN—Fairmont, W. Va.250
 WGST—Atlanta, Ga. 250
 CMCF—(250, Havana, 1000) ..CMX

90 U. S. Regional Chan.
KHJ
 Los Angeles, 1000
 WBEN—Buffalo 1000
 WJAX—Jacksonville 1000
 WKY—Oklahoma City 1000
 WLBI—Stevens Pt., Wis. 2500
 VOWR—St. Johns, Newf'd. 500
 KGBU—Ketchikan, Alaska 500

91 Canadian Channel
CRCM
 Montreal, 5000
CKY—Winnipeg5,000
XEW—Mexico C.5,000
TICR—San Jose, Costa Rica 75

92 U. S.-Canada Shared
WWJ--Detroit1000
KPRC--Houston1000
 KOMO—Seattle 1000
 HHK—Port au Prince, Haiti. 1000
 WBSO—Needham, Mass. 500
 WAAF—Chicago 500
 KXFF—(Denver, 500) ..KFEL
 WRAX—(Phil'd'phia, 250) ..WPEN

93 U. S.-Canada Shared
KMA-KGBZ
 Shenandoah, Ia. (500) ..York, Pa.
 KROW—Oakland, Calif.500
 WDBJ—Roanoke, Virginia500
 WBRG—Birmingham, Ala.500
 CMJF—Camaguey, Cuba200
 CMBW—Havana, Cuba150
WEEB—Reading, Penn.1000
 WJAX—Jacksonville, Fla. 500
 WJAX—Jacksonville, Fla. 500
 WJAX—Jacksonville, Fla. 500
 WJAX—Jacksonville, Fla. 500

94 U. S. Regional Chan.
XEFO-XFO
 Mexico City, 5000
 WHA—Madison, Wis. 1000
 WAVE—Louisville, Ky. 1000
 WDAY—Fargo, N. D. 1000
 WCSH—Portland, Me. 1000
 KOIN—Portland, Ore. 1000
 WAAT—Jersey City, N. J.500

95 U. S.-Canada Shared
KGHL—Billings, Mont. 1000
KMBC—Kansas City 1000
KFWB—Hollywood 1000
 WRC—Washington, D. C.500
 CMHD—Caibarien, Cuba250
 TI4NRH—Heredia, Costa Rica. 75
 VOGY—St. Johns, Newf'd. 75

96 Canadian Channel
XEAW
 Reynosa, Mexico, 10,000
CRCT
 Toronto, 5000
 CMJL—Camaguey, Cuba 50

97 U. S. Cleared Channel
KJR
 SEATTLE, 5,000
 WCFL—Chicago 5000
 WBG—Glenside, Pa. 100
 CMCW—(Hav'na, 150) ..CMBD

98 U. S. Cleared Channel
KDKA
 PITTSBURGH, 50,000
 XEAE—Tijuana, Mexico800

99 U. S. Cleared Channel
WBZ-WBZA
 BOSTON, 50,000
 WJEM—Tupelo, Miss.500
XEAF-XEY
 Nogales, Mex., 750; Mexico, 100
 CMJF—Matanzas, Cuba100

Airline Distances

(United States-Canada)

TABLE NO. 1

It is possible to arrange only a limited number of cities in a distance table, for quick finding and on this page is a table that is one of a series that embraces

No. 1: United States-Canada Distances
No. 2: Western Hemisphere Distances

No. 3: Eastern Hemisphere Distances
No. 4: All-World Distances

It will be noted that 48 cities are included in this chart and the arrangement places 48 on each side and 24 each on top and bottom. The diagonal row of hands in the upper and lower halves divides the figures applying to the cities at the left and those at the right.



FROM
TO

Albuquerque
Atlanta, Ga.
Baltimore, Md.
Bismarck, N. D.
Boise, Idaho
Boston, Mass.
Butte, Mont.
Calgary, Alta.
Casper, Wyo.
Charlotte, N. C.
Chicago, Ill.
Cincinnati, Ohio
Cleveland, Ohio
Dallas, Texas
Denver, Colo.
Des Moines, Iowa

Edmonton, Alta.
Hot Springs, Ark.
Kansas City, Mo.
Los Angeles, Cal.
Louisville, Ky.
Miami, Fla.
Milwaukee, Wis.

Minneapolis
Montreal, Que.
Nashville, Tenn.
New Orleans, La.
New York, N. Y.
Omaha, Nebr.
Philadelphia, Pa.
Phoenix, Ariz.
Pittsburgh, Pa.
Portland, Me.
Portland, Ore.
Regina, Sask.
Richmond, Va.
St. Louis, Mo.
Salt Lake City
San Antonio, Tex.
San Francisco
Schenectady
Seattle, Wash.
Toronto, Ont.
Tulsa, Okla.
Vancouver, B. C.
Washington, D. C.
Winnipeg, Man.

1142	1697	1173	664	725	774	1389	1359
680	620	332	1915	680	491	2000	614
639	995	491	2310	959	959	1995	393
675	1855	965	1285	620	946	750	916
1411	2371	1621	705	1151	1395	761	1660
854	1314	824	2595	1251	1302	2068	651
1221	2230	1468	915	1030	1309	576	1465
1330	2495	1629	1231	1245	1550	233	1559
934	1902	1130	891	670	925	860	1180
670	675	344	2110	804	687	2039	522
80	1215	270	1738	418	590	1449	233
323	984	92	1867	541	565	1710	239
338	1119	319	2045	700	786	1690	98
860	1106	725	1241	454	246	1709	1000
910	1728	1032	835	553	755	1008	1150
308	1351	479	1439	184	432	1252	541
252	1191	319	1982	645	768	1598	848
1381	2600	1708	1470	1370	1632	1682	1682
651	976	478	1438	352	2318	218	443
443	1251	485	1350	498	1203	663	663
1740	2330	1825	1130	1130	2628	485	485
356	940	1679	681	362	2052	957	957
1237	181	160	1775	473	368	1782	479
235	1537	608	1523	418	731	1033	516

835	338	590	1412	1241	1130	1455	835
744	1202	713	565	381	603	224	1345
837	1500	1210	307	418	603	375	1863
504	534	1009	1009	976	731	1320	393
1155	645	1302	1745	1660	1450	1960	479
1155	1755	1549	547	737	849	737	1780
995	589	1260	1560	1481	1262	1798	381
1165	908	1543	1655	1635	1385	1975	675
663	233	884	1265	1168	957	1462	848
817	1350	920	448	344	595	1039	1039
307	916	811	307	252	1720	319	319
504	1089	811	221	258	572	897	897
614	1223	1031	406	621	258	1565	1565
639	675	1253	1253	995	1590	553	553
608	1795	1622	602	812	893	842	1800
711	1315	1070	110	259	406	381	1370
1150	590	885	1741	1572	1442	1770	731
964	1569	1239	356	480	664	467	1020
123	480	596	757	622	451	922	559
1020	1622	1379	406	572	713	461	1680
835	1082	436	934	713	843	651	1271
528	1020	615	467	240	406	338	1141
1031	1630	1525	504	720	750	836	1615
233	701	873	627	603	356	947	670

1185	835	1965	794	872	1671	1267	1130
1903	1700	946	1830	1251	590	1130	1130
1965	1869	368	2050	1320	2378	2262	1340
664	565	1480	780	786	1070	670	602
533	249	2235	786	1070	670	602	602
2084	2041	1819	1055	344	762	1560	1560
356	2475	418	1039	2335	2130	1210	1210
1900	147	2100	1334	238	860	1819	1819
1039	780	2689	529	1279	2140	2138	897
1707	1395	1770	1400	1221	1420	885	614
730	418	2090	302	941	1850	1585	497
1430	1250	1032	1390	790	725	479	934
2000	1888	485	2050	1331	135	479	1630
417	492	1665	738	307	1549	1550	1032
553	492	2511	350	1042	2140	2177	1130
2070	2047	111	2260	1465	460	1051	2011
1769	1660	480	1855	1125	190	541	1500
1251	899	2283	762	1105	1930	1340	323
2000	1920	271	2110	1359	92	674	1743
1085	892	1279	1038	455	1020	824	720
2015	1955	190	2142	1390	178	762	1819
1910	1651	1378	1720	1301	1009	424	1027
1689	1500	946	1633	1032	596	221	1114
1860	1850	271	2070	1290	479	1009	1869
1031	935	1119	1130	381	934	922	983

FROM
TO

Winnipeg, Man.
Washington, D. C.
Vancouver, B. C.
Tulsa, Okla.
Toronto, Ont.
Seattle, Wash.
Schenectady
San Francisco
San Antonio, Tex.
Salt Lake City
St. Louis, Mo.
Richmond, Va.
Regina, Sask.
Portland, Ore.
Portland, Me.
Pittsburgh, Pa.
Phoenix, Ariz.
Philadelphia, Pa.
Omaha, Nebr.
New York, N. Y.
New Orleans, La.
Nashville, Tenn.
Montreal, Que.
Minneapolis

Milwaukee, Wis.
Miami, Fla.
Louisville, Ky.
Los Angeles, Cal.
Kansas City, Mo.
Hot Springs, Ark.
Edmonton, Alta.
Detroit, Mich.
Des Moines, Iowa
Denver, Colo.
Dallas, Texas
Cleveland, Ohio
Cincinnati, Ohio
Chicago, Ill.
Charlotte, N. C.
Casper, Wyo.
Calgary, Alta.
Butte, Mont.
Boston, Mass.
Boise, Idaho
Bismarck, N. D.
Baltimore, Md.
Atlanta, Ga.
Albuquerque



The Short Waves

"BELOW 100 METERS"

Q

Radio Log and Lore maintains and publishes at intervals, many pages of short wave classified logs, charts and maps, of interest to short wave fans, nearly as many as this entire issue. It is, therefore, obviously impossible to present all in a single issue of this magazine and subsequent issues will contain other equally interesting pages. By preserving and combining them, a short wave log, never before attempted for completeness and comprehensiveness, may be obtained.

About Our Short Wave Listings

There are many kinds of short wave stations, performing many functions, and lists are classified and published at intervals by this magazine as follows:

BROADCASTING (Program)	CODE (Press Reports)
RADIOTELEPHONE (Transoceanic)	AIR (Air Field Stations)
POLICE (Emergency)	SHIP (Ship Radiotelephone)
EXPERIMENTAL (Intermittent Broadcasting)	TELEVISION (Visual Broadcasting)
AMATEUR (Voice and Code)	

Functions of short wave stations are indicated by their classification and of these, program or broadcasting stations are most eagerly sought. However, the thrill of a voice from the opposite side of the earth is not without its effect and distance, therefore, becomes an important consideration. ¶¶ In addition to the classified lists, a master frequency list is published, listing either individual stations or channels inhabited by many stations; also, a spectrum containing many station and channel listings, and illustrating the entire span of radio.

In many of the tables, meters are omitted, as most sets are now calibrated in megacycles and both megacycles and kilocycles are convertible by a shifting of the decimal point. Where space permits both meters and kilocycles (or megacycles) are given.

No attempt is made to include stations that hold a license but seldom operate, or stations that operate only at infrequent intervals. Broadcast stations only actually on the air, phone stations that transmit messages and ship and code stations actually heard by listeners are included.

When Short Wave Reception Is at Its Best

The high frequencies (short waves) are used to span great distances so that the short wave set in a word, as compared to the long wave or broadcast wave receiver, is a set of great distances; but there are many factors which control reception and make the success of reception uncertain. Two fundamental factors in short wave broadcasting, however, have been discovered and used to advantage by broadcasters which have, in a measure, reduced uncertainty and improved on the results that may be obtained.

One of these is the time of day when reception is at its best for a given frequency. The other is the influence that both time of day and frequency exert on the "skip distance". Above 12,000 kilocycles reception generally is more satisfactory during the day than at night, whereas in frequencies below 6,000 kilo-

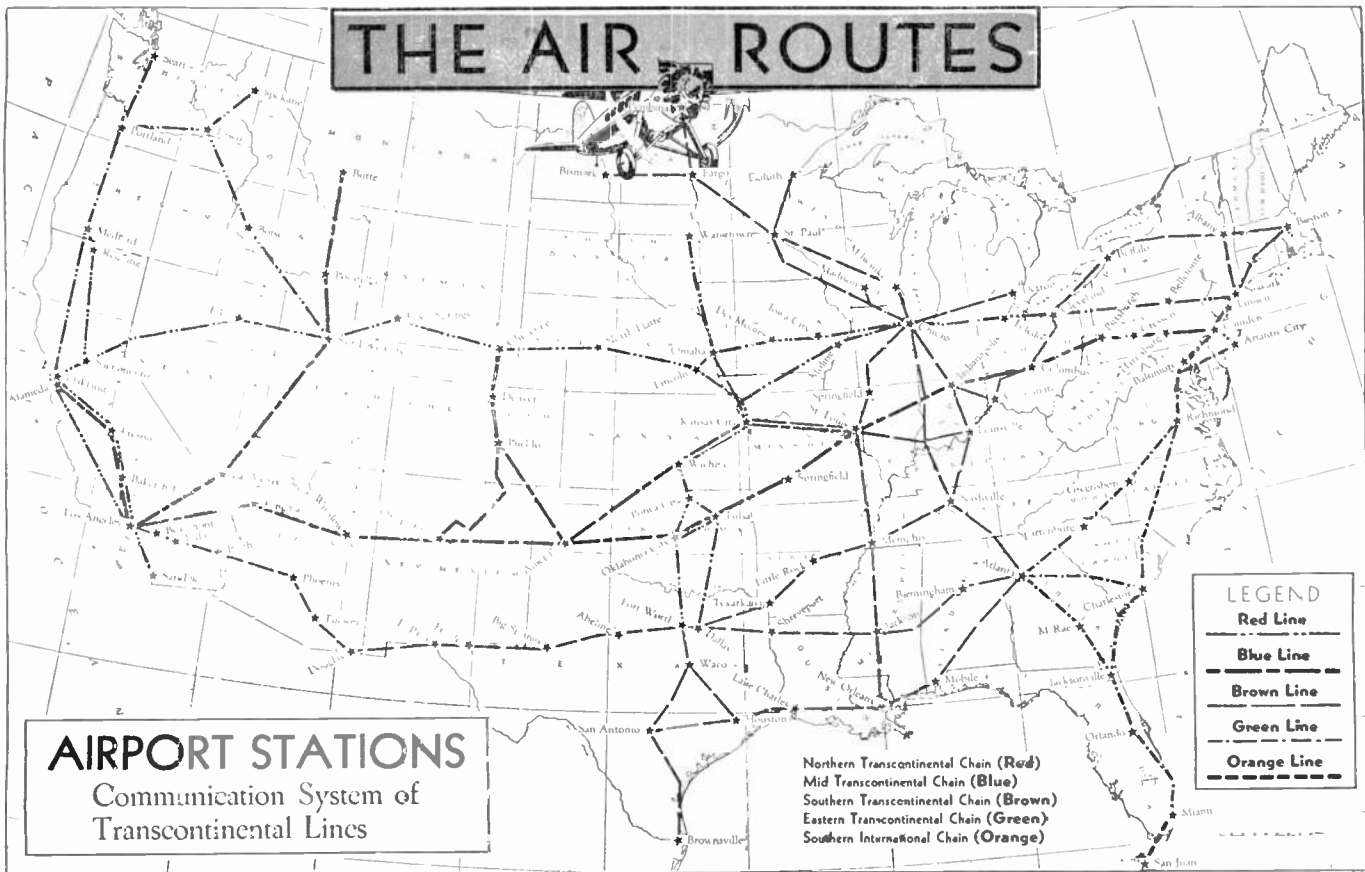
cycles night-time reception is better. It has been found experimentally that frequencies above 15,000 kilocycles can be heard only when the path between the transmitting station and the receiver lies entirely in daylight. For frequencies between 15,000 to 8,000 kilocycles reception is best when either the transmitter or the receiver lies in darkness, but not both. The reliable range of the sky wave will vary slowly from season to season, but very rapidly from day to night. The "skip distance" is at the minimum at noon, and increases to a maximum at midnight. The most unusual conditions of reception are encountered at sunrise and sunset when the most rapid changes occur. "Skip distance" is greater when the frequency is higher.

The foregoing accounts for broadcasters, well familiar with these physical agencies,

using different frequencies for different periods of the day as well as a frequency suitable for reaching the locality the broadcast is intended to cover.

The seasons of the year affect greatly short wave reception. Better reception on the shorter waves or higher frequencies may be expected, as a rule, during the Summer months, and better reception at 6,000 kilocycles and below during the Winter months. The higher frequencies are affected least by atmospheric disturbances or static, and good results may be obtained even in Midsummer during a severe thunder storm. On the other hand, these shorter waves are affected more by interference from trolley-cars, dial telephones, automobiles, electrical appliances, elevators and the many smaller electrical devices than the standard broadcast waves.

In the Forenoon Dial . . .	Above 15,000 Kilocycles
In the Afternoon Dial . . .	8,000 to 15,000 Kilocycles
In the Evening Dial . . .	Below 8,000 Kilocycles



The government designates the radio communication chain of each of the transcontinental aviation systems by a color, and these communication chains are shown on the map above. The airport stations are grouped by chains, with the frequencies of each chain in megacycles. They are also listed alphabetically by calls. Aside from

relaying company messages, these stations are in constant contact with the planes enroute, receiving location of the plane, sending weather warnings, etc. They come on the air without notice and while this list comprises airport stations only, plane transmitters can be heard on the same frequencies.

Red Line STATIONS & Frequencies	
2.49	2.61
2.61	3.16
3.17	3.18
3.32	4.12
5.57	5.58
5.59	5.66
6.49	6.50
KQX..... Bakersfield, Cal.	KMR..... No. Platte, Nebr.
WNAM..... Bellefonte, Pa.	KFO..... Oakland, Cal.
KRA..... Boise, Idaho	KNAV..... Okla. City, Okla.
KOE..... Cheyenne, Wyo.	KAP..... Omaha, Nebr.
WUCG..... Chicago, Ill.	KRP..... Pasco, Wash.
WNAC..... Cleveland, Ohio	KGV..... Ponca C., Okla.
KNAT..... Dallas, Tex.	KQD..... Portland, Or.
KQM..... Des Moines, Iowa	KFU..... Redding, Cal.
KKO..... Elko, Nev.	KQC..... Rock Springs, Wyo.
KGU..... St. Louis, Mo.	KFM..... Sacramento, Cal.
KGT..... Fresno, Cal.	KQJ..... Salt Lake, Utah
KQQ..... Iowa City, Iowa	KGQZ..... San Diego, Cal.
KNAS..... Kansas City, Mo.	KZJ..... Seattle, Wash.
KRF..... Lincoln, Nebr.	KGTY..... Spokane, Wash.
KEU..... Los Angeles, Cal.	WNAJ..... Toledo, Ohio
KGE..... Medford, Or.	KNAU..... Tulsa, Okla.
WNAU..... Moline, Ill.	KGTC..... Watertown, S. B.
WNAO..... Newark, N. J.	KGTE..... Wichita, Kans.

Brown Line STATIONS & Frequencies	
2.32	2.36
2.67	2.67
2.70	2.85
2.94	3.00
3.13	3.23
3.24	3.26
3.45	3.46
3.47	3.48
4.74	4.92
5.38	5.60
5.61	5.63
5.82	6.54
6.55	6.56
8.01	
KGUL..... Abeline, Tex.	KGUJ..... Indio, Cal.
WSDM..... Albany, N. Y.	WSDS..... Jackson, Miss.
WQDP..... Atlanta, Ga.	KGTL..... Lake Charles, La.
KGTV..... Beaumont, Cal.	KQUU..... Little Rock, Ark.
KGUG..... Big Spr'gs, Tex.	KGUR..... Los Angeles, Cal.
WSDS..... Birmingham, Ala.	WSDP..... Louisville, Ky.
KNWD..... Bismark, N. D.	WSDR..... Madison, Wisc.
KGUS..... Blythe, Cal.	WSDK..... Memphis, Tenn.
WSDD..... Boston, Mass.	WAEH..... Milwaukee, Wisc.
KGUE..... Brownsville, Tex.	WAEK..... Mobile, Ala.
WDSO..... Buffalo, N. Y.	WSDH..... Nashville, Tenn.
WSDG..... Chicago, Ill.	WSDC..... Newark, N. J.
WSDS..... Chicago, Ill.	WDDQ..... New Orleans, La.
WSDI..... Cincinnati, Ohio	KGTS..... Omaha, Nebr.
WSDQ..... Cleveland, Ohio	KNWC..... Pembina, N. D.
WSDP..... Columbus, Ohio	KGUP..... Phoenix, Ariz.
KGUF..... Dallas, Tex.	KGUM..... Fort Worth, Tex.
WAEI..... Detroit, Mich.	KNWA..... St. Paul, Minn.
KGUN..... Douglas, Ariz.	KGUD..... St. Antonio, Tex.
WSDL..... Duluth, Minn.	KGUK..... Shreveport, La.
KGUA..... El Paso, Texas	WAEJ..... Springfield, Ill.
KNWB..... Fargo, N. D.	KGTS..... Texarkana, Ark.
KGUM..... Frjole, Tex.	KGUO..... Tucson, Ariz.
KGUB..... Houston, Texas	KGLH..... Waco, Tex.
WSDZ..... Indianap'lis, Ind.	

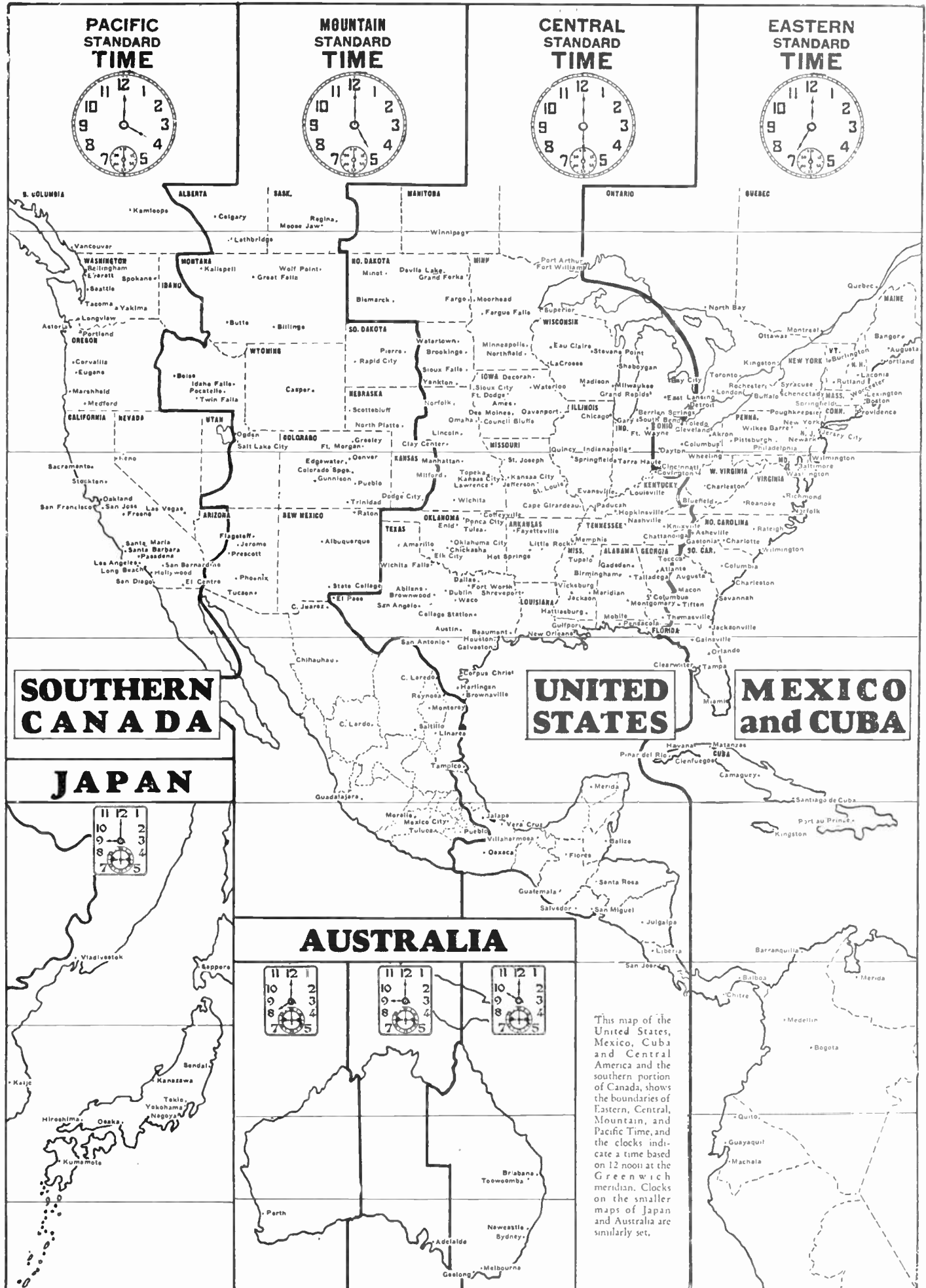
Blue Line STATIONS & Frequencies	
2.72	2.73
2.90	3.07
3.09	4.11
5.51	5.54
5.67	5.69
6.51	6.52
6.53	8.01
KGSL..... Alameda, Cal.	KGTL..... Las Vegas, Nev.
KSX..... Albuquerque, N. M.	KSI..... Los Angeles, Cal.
KSV..... Amarillo, Tex.	WAEF..... Newark, N. J.
KBTY..... Butte, Mont.	KGSC..... Okla. City, Okla.
WAEK..... Camden, N. J.	WAEW..... Crasson, Pa.
KGTT..... Cheyenne, Wyo.	KGTX..... Pocatello, Ida.
WHG..... Columbus, Ohio	KGSR..... Pueblo, Colo.
WAEK..... Pittsburgh, Pa.	KGTR..... St. Louis, Mo.
KGSP..... Denver, Colo.	KGTH..... Salt Lake, Utah
WAEK..... Harrisburg, Pa.	KGTY..... Springfield, Mo.
WHM..... Indianapolis, Ind.	KSY..... Tulsa, Okla.
KST..... Kansas City, Mo.	KGTD..... Wichita, Kans.
KGTL..... Kingman, Ariz.	KGTA..... Winslow, Ariz.

Orange Line STATIONS & Frequencies	
2.65	2.87
3.08	3.08
5.40	5.96
6.57	6.58
8.01	8.22
12.33	16.24
16.44	
WKDL..... Miami, Fla.	WMDU..... San Juan, P. R.
KGJW..... Brownsville, Tex.	

Green Line STATIONS & Frequencies	
2.38	2.92
2.95	2.99
4.12	4.74
5.65	6.60
WEEA..... Atlanta, Ga.	WEEN..... Linden, N. J.
WEEQ..... Atlantic C., N. J.	WEEM..... McRae, Ga.
WEEB..... Baltimore, Md.	WEEM..... Miami, Fla.
WEEC..... Charleston, S. C.	WEEO..... Orlando, Fla.
WEEG..... Greensboro, S. C.	WEER..... Richmond, Va.
WEEJ..... Jacksonville, Fla.	WEEF..... Spartanb'rg, S. C.

AIRPORT STATIONS [Alphabetically By Calls]

KBTY..... Butte, Mont.	KGTL..... Kingman, Ariz.	KGUK..... Shreveport, La.	KNWA..... St. Paul, Minn.	KSY..... Tulsa, Okla.	WEEG..... Greensboro, S. C.	WQDD..... New Orleans, La.
KEU..... Los Angeles, Cal.	KGTL..... Kingman, Ariz.	KGUL..... Abeline, Tex.	KNWB..... Fargo, N. D.	WEEH..... McRae, Ga.	WSDJ..... Jackson, Miss.	WQDP..... Atlanta, Ga.
KFM..... Sacramento, Cal.	KGTV..... Beaumont, Cal.	KGUM..... Frjole, Tex.	KNWC..... Pembina, N. D.	WEEJ..... Jacksonville, Fla.	WSDC..... Newark, N. J.	
KFO..... Oakland, Cal.	KGTR..... St. Louis, Mo.	KGUN..... Douglas, Ariz.	KNWD..... Bismark, N. D.	WEEK..... Miami, Fla.	WSDD..... Boston, Mass.	
KGE..... Medford, Ore.	KGTS..... Omaha, Nebr.	KGUO..... Tucson, Ariz.	KOE..... Cheyenne, Wyo.	WEEW..... Richmond, Va.	WSDI..... Cincinnati, Ohio	
KGJW..... Brownsville, Tex.	KGTT..... Cheyenne, Wyo.	KGUP..... Phoenix, Ariz.	KQC..... Rock Springs, Wyo.	WEEQ..... Orlando, Fla.	WSDP..... Louisville, Ky.	
KGQ..... San Diego, Cal.	KGTL..... Lake Charles, La.	KQD..... Portland, Or.	KQUU..... Little Rock, Ark.	WEEK..... Atlanta, N. J.	WSDG..... Chicago, Ill.	
KGSC..... Alameda, Cal.	KGTV..... Beaumont, Cal.	KGUR..... Los Angeles, Cal.	KQM..... Des Moines, Iowa	WEEK..... Richmond, Va.	WSDH..... Nashville, Tenn.	
KGSC..... Okla. City, Okla.	KGTX..... Pocatello, Ida.	KGUS..... Blythe, Cal.	KQQ..... Iowa City, Iowa	WEEK..... Columbus, Ohio	WSDI..... Cincinnati, Ohio	
KGSP..... Denver, Colo.	KGTY..... Spokane, Wash.	KGUT..... St. Louis, Mo.	KQUU..... Little Rock, Ark.	WEEK..... Miami, Fla.	WSDK..... Memphis, Tenn.	
KGSR..... Pueblo, Colo.	KGUA..... El Paso, Texas	KGUZ..... Ponca C., Okla.	KQX..... Bakersfield, Cal.	WEEK..... Detroit, Mich.	WSDL..... Duluth, Minn.	
KGT..... Fresno, Cal.	KGUB..... Houston, Texas	KKO..... Elko, Nev.	KRA..... Boise, Idaho	WEEK..... Springfield, Ill.	WSDM..... Albany, N. Y.	
KGTA..... Winslow, Ariz.	KGUD..... S. Antonio, Tex.	KMP..... Omaha, Nebr.	KRD..... Pasco, Wash.	WAEK..... Mobile, Ala.	WSDN..... Columbus, Ohio	
KGTB..... Texarkana, Ark.	KGUE..... Brownsville, Tex.	KMR..... No. Platte, Nebr.	KRF..... Lincoln, Nebr.	WDSO..... Buffalo, N. Y.	WSDQ..... Cleveland, Ohio	
KGTC..... Watertown, S. D.	KGUF..... Dallas, Tex.	KNAS..... Kansas City, Mo.	KSN..... Los Angeles, Cal.	WEEA..... Atlanta, Ga.	WSDR..... Madison, Wisc.	
KGTD..... Wichita, Kans.	KGUG..... Big Spr'gs, Tex.	KNAT..... Dallas, Tex.	KST..... Kansas City, Mo.	WEEB..... Baltimore, Md.	WSDS..... Chicago, Ill.	
KGTE..... Wichita, Kans.	KGUH..... Waco, Tex.	KNAU..... Tulsa, Okla.	KSV..... Amarillo, Tex.	WEEC..... Charleston, S. C.	WSDZ..... Indianap'lis, Ind.	
KGTH..... Salt Lake, Utah	KGUI..... Fort Worth, Tex.	KNAV..... Okla. City, Okla.	KXK..... Albuquerque, N. M.	WEEF..... Spartanb'rg, S. C.	WUCG..... Chicago, Ill.	



This map of the United States, Mexico, Cuba and Central America and the southern portion of Canada, shows the boundaries of Eastern, Central, Mountain, and Pacific Time, and the clocks indicate a time based on 12 noon at the Greenwich meridian. Clocks on the smaller maps of Japan and Australia are similarly set.

A · —	E ·	I · ·	M — —	Q — — · —	U · · —	Y — · — —
B — · · · ·	F · · — · ·	J · — — —	N — ·	R · — ·	V · · · —	Z — — · ·
C — · — —	G — — · ·	K — · — —	O — — — —	S · · ·	W · — — —	E (French) · · — · ·
D — · ·	H · · · · ·	L · — · ·	P — · — ·	T —	X — · · · ·	(A German) · · — · ·
1 · — — — —	3 · · · — —	5 · · · · ·	7 — · · · ·	9 — — — · ·		
2 · · — — —	4 · · · · —	6 — · · · ·	8 — — — · ·	0 — — — — —		
· (Period) · · · · ·	, (Comma) · — · · · ·	! (Exclamation Point) — — — — —	— (Fraction Bar) · · · · ·	Break (Double Dash) — · · · —		
- (Hyphen) — · · · ·	: (Colon) — — · · · ·	' (Apostrophe) · — — — —	“ (Inverted Commas) · · · · ·	End Message (Cross) · — · · —		
? (Interrogation) · · — · ·	; (Semicolon) · — · · · ·	() (Parenthesis) — · — — —	Warning (High Power) — · · · ·	Error · · · · ·		

WHY NOT LEARN MORSE CODE?

{ International Morse Code and Conventional Signals }
To Be Used for All General Public - Service Communication

Radio has been instrumental in bringing about a universal understanding of Morse Code. As proficiency in its use is necessary to the securing of an amateur license, thousands upon thousands of "Hams" in all parts of the world have become expert in its use; whereas this knowledge was previously possessed only by persons employed professionally in the transmission of messages by wire.

PLEASE NOTE:

- (1) A Dash Is Equal to Three Dots
- (2) The Space Between Parts of the Same Letter Is Equal to One Dot
- (3) The Space Between Two Letters Is Equal to Three Dots
- (4) The Space Between Two Words Is Equal to Five Dots

This knowledge of the alphabet, acquired by amateurs and others, is the source of much entertainment in gleaning press, weather and other information from the air.

QRA.....What is the name of your station?	QRT.....Must I stop sending?	QSP.....Will you relay to..... free of charge?
QRB.....At what approximate distance are you?	QRU.....Have you anything for me?	QSQ.....Must I send each word or group once only?
QRD.....Where are you going?	QRV.....Must I send a series of V's?	QSX.....Does my wave length (frequency) vary?
QRE.....What is the nationality of your station?	QRW.....Must I advise.....that you are calling him?	QSZ.....Must I send each word or group twice?
QRF.....Where do you come from?	QRX.....Must I wait? When will you call me again?	QTA.....Must I cancel telegram No.....?
QRG.....Will you indicate my exact frequency in kilocycles?	QRY.....Which is my turn?	QTB.....Do you agree with my word count?
QRH.....What is your exact frequency in kilocycles?	QRZ.....By whom am I being called?	QTC.....How many telegrams have you to send?
QRI.....Is my tone bad?	QSA.....What is the strength of my signals (9 to 5)?	QTD.....Is the word "count" accepted?
QRJ.....Are you receiving me badly? Signals weak?	QSB.....Does the strength of my signals vary?	QTE.....What is my true bearing?
QRK.....Are you receiving me well? Are my signals good?	QSC.....Do my signals disappear entirely at intervals?	QTH.....What is your position in latitude and longitude?
QRL.....Are you busy?	QSD.....Is my keying bad?	QTI.....What is your true course?
QRM.....Are you being interfered?	QSE.....Are my signals distinct?	QTJ.....What is your speed?
QRN.....Are you troubled by atmospheric?	QSF.....Is my automatic transmission good?	QTK.....What is true bearing of..... relative to you?
QRO.....Must I increase my power?	QSG.....Must I suspend traffic? When will you call?	QTP.....Are you going to enter the dock?
QRP.....Must I decrease my power?	QSL.....Can you give me acknowledgment of receipt?	QTR.....What is the exact time?
QRQ.....Must I send faster?	QSM.....Have you received my acknowledgment?	QTS.....What is true bearing of your station relative to me?
QRS.....Must I send slowly	Q SN.....Can you receive me listen?	QTU.....What are hours during which your station is open?

SHORT WAVE STATION

4.10 : WND
73.21M—PHONE—()
HIALEAH, FLORIDA
Amer. Teleph. & Telegr. Co.
Phones VPX, Bahamas,
irregularly

4.11 : HCJB
72.99M—BRD—()
QUITO, ECUADOR
Daily except Mondays 7:30
to 9:45 pm

4.27 : RV15
70.20M—BRD—15,000W
KHARBAROVSK, RUSSIA
Daily 3-9 am

4.32 : CDB
69.44M—PHONE—15,000W
RUGBY, ENGLAND
British Post Office
Phones Canada 8-11 pm,
irregularly

4.75 : WOO
63.12M—PHONE—20,000W
OCEAN GATE, N. J.
Amer. Teleph. & Telegr. Co.
Phones ships irregularly

4.82 : CDW
62.24M—BRD—15,000W
RUGBY, ENGLAND
British Post Office
Tests with New York 8-11
pm, irregularly

4.82 : G6RX
62.24M—EXP—()
RUGBY, ENGLAND
Tests 8-11 pm irregularly

4.98 : CBC
60.30M—PHONE—5000W
RUGBY, ENGLAND
Phones ships irregularly

5.02 : ZFA
59.70M—PHONE—1500W
HAMILTON, BERMUDA
Phones ships and USA
at night

5.08 : WCN
59.08M—PHONE—20,000W
LAWRENCEVILLE, N. J.
Amer. Teleph. & Telegr. Co.
Phones England evenings

5.14 : PMY
58.31M—BRD—1000W
BANDOENG, JAVA
Phones Australia near 11 am

5.70 : HCK
52.63M—BRD—()
QUITO, ECUADOR
Daily 8-11 pm

5.85 : WOB
51.26—PHONE—()
LAWRENCEVILLE, N. J.
Phones Bermuda nights

5.86 : HJ4ABE
51.20M—BRD—()
MEDELLIN, COLOMBIA
Mondays 7-11 pm, Tues.,
Thurs. and Sat. 6:15-8 pm,
Wed. and Fri. 7:30-10 pm.

5.97 : HVJ
50.27M—BRD—15,000W
VATICAN CITY, ITALY
Daily 2-2:15 pm except
Sundays. Sundays 5-5:30 am

6.00 : RW59
50.00M—BRD—20,000W
MOSCOW, RUSSIA
Daily 2-6 pm

6.00 : VE9DN
49.96M—BRD—()
DR'MM'NOVILLE, CANADA
Saturdays after 11:30 pm

6.00 : VE9DR
49.96M—BRD—()
DR'MM'NOVILLE, CANADA
Daily 7 am to 11 pm
Sundays 10 am to 11 pm

6.00 : COG
50.00M—BRD—()
HAVANA, CUBA
Daily 4-8 pm, irregularly

6.02 : DJC
49.83M—BRD—5000W
ZEEZAN, GERMANY
Daily 1-4 and 8-11 pm

6.04 : W4XB
49.67M—BRD—2500W
MIAMI, FLORIDA
Relays WIOD
Saturdays 6-11 pm

6.04 : W1XAL
49.67M—BRD—5000W
BOSTON, MASS.
Daily 6-7:45 pm. Sundays
6:30-9:30 pm, irregularly

6.05 : CSA
49.59M—BRD—20,000W
DAVENTRY, ENGLAND
2:45-5:45 pm and 6-8 pm

6.06 : W3XAU
49.50M—BRD—1000W
PHILADELPHIA, PENNA.
Relays WCAU
8 pm-1 am irregularly

6.06 : VQ7LO
49.50M—BRD—1250W
NAIROBI, AFRICA
Mon., Wed. and Fri.
5:45-6:15 am; Tue. 3-4 am
and Thu. 8-9 am

6.06 : W8XAL
49.50M—BRD—10,000W
CINCINNATI, OHIO
Relays WLW
9-10 pm irregularly

6.07 : VE9CS
49.42M—BRD—()
VANCOUVER, B. C.
Fridays 12:30-1:45 am
Sundays Noon-Midnight

6.07 : YV5BMO
49.42M—BRD—()
MARACAIBO, VENEZUELA
Tests 5-10 pm

6.07 : UOR2
49.41M—BRD—250W
VIENNA, AUSTRIA
Wed. and Fri. 1-8:30 pm
Tue. and Thu. 8:30 am-4 pm

6.07 : OXY
49.40M—BRD—500W
SKAMLEBACK, DENMARK
Relays Copenhagen
1-6 pm irregularly

6.08 : W9XAA
49.34M—BRD—500W
CHICAGO, ILL.
Relays WCFL
Sundays 11:30 am-9 pm

6.08 : CP5
49.30M—BRD—()
LA PAZ, BOLIVIA
Mon., Wed., Fri. 6:30-8 pm
Tue., Thu., Fri. 9-11:30 pm

6.09 : VE9BJ
49.26M—BRD—()
ST. JOHN, CANADA
Daily 5-11 pm

6.09 : VE9CW
49.22M—BRD—()
BOWMANVILLE, CANADA
Mon., Tue., Wed., Thu. 3
pm-Midnight; Fri. and Sat.
8 am-Mid.; Sun. Noon-9 pm

6.10 : W3XAL
49.18M—BRD—35,000W
BOUND BROOK, N. J.
Relays WJZ
Saturdays 5:30 pm-1 am

6.10 : W9XF
49.18M—BRD—5000W
CHICAGO, ILL.
Daily except Saturday 4:30-8
pm and 9:30 am-2 pm
Sundays 4:30-7 pm

6.11 : VUC
49.10M—BRD—()
CALCUTTA, INDIA
Daily except Saturday
9:30-Noon,
Saturdays 11:45 pm-3 am

6.11 : VE9HX
49.10M—BRD—()
HALIFAX, CANADA
Daily 8:30-11:30 pm and
5-10 pm

6.12 : W2XE
49.02M—BRD—5000W
WAYNE, N. J.
Relays WABC
Daily 6-11 pm

6.12 : ZTJ
49.00M—BRD—5000W
JOHANNESBURG, S. AFR.
Daily 4-6 am and
11 am-3:40 pm

6.13 : ZGE
48.90M—BRD—1200W
KUALA LUMPUR, F. M. S.
Sunday, Tuesday and
Friday 6:40-8:40 am

6.14 : W8XK
48.86M—BRD—40,000W
PITTSBURGH, PENNA.
Relays KDKA
4:30 pm-2 am

6.15 : YV3BC
48.78M—BRD—()
CARACAS, VENEZUELA
Daily 10:30 am-1:30 pm
and 4:30-9:30 pm

6.19 : TGV
48.50M—BRD—()
GUATEMALA, GEN. AM.
1:30-2:30 pm and
5 pm-Midnight

6.25 : HJ3ABF
48.00M—BRD—()
BOGOTA, COLOMBIA
Daily 7-11 pm

6.28 : H11A
47.80M—BRD—()
SANTO DOMINGO, D. R.
Daily 12:10-2:10 pm and
Thu. 12:10-2:10 pm and
7:40-9:40 pm

6.32 : HIZ
47.50M—BRD—()
SANTO DOMINGO, D. R.
Daily 4:40-5:40 pm and
Saturdays 9:40-11:40 pm

6.38 : HJ5ABD
47.02M—BRD—()
CALI, COLOMBIA
Thu., Sat. and Sun.
7:00-10 pm

6.42 : W3XL
46.70M—BRD—()
BOUND BROOK, N. J.
Fridays 5 pm and 1 am
irregularly

6.45 : HJ1ABB
46.51M—BRD—()
BARRANQUILLA, COLOM.
Daily 11:30 am-1 pm and
5-10 pm
Tuesdays 5-11 pm

6.61 : RW72
45.38M—BRD—10,000W
MOSCOW, RUSSIA
Daily 1-6 pm

6.62 : PRADO
45.32M—BRD—()
RIOBAMBA, ECUADOR
Thursdays 9-11 pm

6.65 : IAC
45.11M—PHONE—14,000W
PIZZA, ITALY
Phones ships evenings

6.67 : HC2RL
45.00M—BRD—()
QUITO, ECUADOR
Sundays 5:45-7:45 pm and
Tue. 9:15-11:15 pm

6.75 : WOA
44.41M—PHONE—20,000W
LAWRENCEVILLE, N. J.
Amer. Teleph. & Telegr. Co.
Phones England nights

6.90 : GDS
43.45M—PHONE—15,000W
RUGBY, ENGLAND
British Post Office
Phones New York nights

6.84 : HAT2
43.86M—PHONE—20,000W
BUDAPEST, HUNGARY
Phones USA, Holland, Hun-
gary, Turkey, England and
French Algeria

6.99 : LCL
42.9M—BRD—1000W
JELOY, NORWAY
Relays Oslo
Daily 11 am-6 pm

7.15 : HJ4ABB
41.00M—BRD—()
BOGOTA, COLOMBIA
Sundays 3:30-4:30 pm;
Monday 7:30-9:30 am and
Thursday 12:30-2:30 pm

7.22 : HKE
41.55M—BRD—()
BOGOTA, COLOMBIA
Monday 6-7 pm
Tuesday and Friday 8-9 pm

7.40 : HJ3ABD
40.54M—EXP—()
BOGOTA, COLOMBIA
Daily 9-11:15 pm

7.80 : HBP
38.48M—BRD—20,000W
PRANGINS, SWITZ.
Saturdays 5:30-6:15 pm

7.88 : J1AA
38.07M—BRD—5000W
KEMIKAWOA-CHO, JAPAN
Testing with KEL irregularly

8.03 : CNR
37.55M—BRD—12,000W
RABAT, MOROCCO
Sunday 2:30-5 pm

8.18 : PSK
36.65M—PHONE—12,000W
RIO DE JANEIRO, BRAZIL
Sending music 6:30-8 pm
irregularly
Cia Radio Int. do Brazil

8.38 : IAC
35.80M—PHONE—14,000W
PIZZA, ITALY
Adminis. Post. and Telegr.
Phones ships irregularly

8.56 : WOO
35.05M—PHONE—20,000W
OCEAN GATE, N. J.
Amer. Teleph. & Telegr. Co.

8.68 : CBC
34.56M—PHONE—5000
RUGBY, ENGLAND
British Post Office
Phones ships irregularly

9.02 : GCS
33.26M—PHONE—15,000W
RUGBY, ENGLAND
British Post Office
Phones New York evenings

9.17 : WNA
32.72M—PHONE—20,000W
LAWRENCEVILLE, N. J.
Amer. Teleph. & Telegr. Co.
Phones England evenings

9.28 : CCB
32.33M—PHONE—15,000W
RUGBY, ENGLAND
British Post Office
Phones CGA and SUV
afternoons

9.33 : CJA2
32.15M—PHONE—15,000W
DR'MM'NOVILLE, CANADA
Canadian Marconi Co.
Phones ships and England
irregularly

9.35 : XDC
32.09M—EXP—()
MEXICO CITY, MEXICO
ZEEZAN, GERMANY
Testing 5-7 pm irregularly

9.51 : YV3BC
31.55M—BRD—()
CARACAS, VENEZUELA
4:30-10 pm irregularly and
10:30-1 pm irregularly

9.51 : VK3ME
31.55M—BRD—3500W
MELBOURNE, AUSTRALIA
Australian Amal. Wireless
Wednesday 5-6 am and
Saturday 5-7 am

9.51 : CSB
31.55M—BRD—20,000W
DAVENTRY, ENGLAND
British Broadcasting Corp.
11 am-1 pm; 1:15-2:45 pm;
6-8 pm

9.53 : W2XAF
31.48M—BRD—40,000W
SCHENECTADY, N. Y.
General Electric Co.
Daily 7:45-11 pm

9.56 : DJA
31.38M—BRD—5000W
ZEEZAN, GERMANY
Daily 4-8 pm

9.57 : W1XAZ
31.85M—BRD—10,000W
SPRINGFIELD, MASS.
Westinghouse Electric
7 am-1 am next day

9.58 : CSC
31.30M—BRD—20,000W
DAVENTRY, ENGLAND
British Broadcasting Corp.
Daily 6-8 pm

9.59 : W3XAU
31.28M—BRD—1000W
PHILADELPHIA, PENNA.
Noon-6 pm

9.59 : VK2ME
31.28M—BRD—16,000W
SYDNEY, AUSTRALIA
..Australian Amal. Wireless
Sunday 1-3 am, 10:30 am
to 12:30 pm

9.59 : HBL
31.27M—BRD—20,000W
PRANGINS, SWITZ.
Radio Suisse S. A.
Saturdays 5:30-6:15 pm

9.60 : XETE
31.25M—BRD—()
MEXICO CITY, MEXICO
Irregular. Now heard in
the morning

N FINDER

This is a combined list of leading broadcast, experimental and communications stations. Broadcast stations, providing entertainment, are most important, although experimental stations often broadcast programs. The greater part of the communications stations listed here are phone; however, some code stations are included. The large figures at the left are the frequencies in megacycles. Meters and power are also shown, as well as the nature of the station.

9-60 : CT1AA 31.23M—BRD—() LISBON, PORTUGAL Tue. and Fri. 4:30-7 pm	10-41 : KES 28.82M—EXP—40,000W BOLINAS, CALIF. RCA Communications Phones Japan irregularly	11-75 : GSD 25.53M—BRD—20,000W DAVENTRY, ENGLAND British Broadcasting Corp. Daily 3-5 am and 1:15-2:45 pm	12-79 : IAC 23.45M—PHONE—14,000W COLTANA, ITALY Works ships mornings	15-24 : FYA 19.68M—BRD—12,000W PARIS, FRANCE Government Station Daily 8-11 am	17-77 : PHI 16.88M—BRD—20,000W HUIZEN, HOLLAND Mon., Wed., Fri. 7:30-9:30 am irregularly
9-71 : GCA 30.90M—PHONE—15,000W RUGBY, ENGLAND British Post Office Phones New York, Brazil and Argentina evenings	10-42 : PDK 28.80M—PHONE—() KOOTWIJK, HOLLAND Admin. Posts and Telegr. Phones Java: 7:30-9:40 am and the Dutch Indies	11-76 : DJD 25.51M—BRD—5000W ZEEZAN, GERMANY Daily 8-11 pm and 1-4:30 pm	12-83 : CNR 23.38M—BRD—12,000W RABAT, MOROCCO Office of Posts and Telegr. Broadcasts Sat. 7:30-9 am Phones St. Assise 5-8 am	15-25 : W1XAL 19.67M—BRD—5000W BOSTON, MASS. World Wide Brcdstg. Corp. Sundays 11 am- 3 pm	17-78 : W3XAL 16.87M—BRD—35,000W BOUND BROOK, N. J. National B-roadca ting Co. Relays WJZ Daily eve. Fri. 11 am-5 pm
9-75 : WOF 30.77M—PHONE—20,000W LAWRENCEVILLE, N. J. Phones England evenings	10-42 : UIC 28.79M—PHONE—() MEDAN, SUMATRA Phones Java and VLK 3-8 am and 4-5 pm	11-76 : XDM 25.50M—PHONE—() MEXICO CITY, MEXICO Tests XAM 8-9 pm irregularly	13-39 : WMA 22.40M—PHONE—() LAWRENCEVILLE, N. J. Phones England daytimes	15-27 : W2XE 19.65M—BRD—5000W WAYNE, N. J. Atlantic Broadcasting Corp. Relays WABC Daily 11 am-1 pm	18-20 : CAW 16.48M—PHONE—15,000W RUGBY, ENGLAND British Post Office Phones New York mornings
9-79 : GCW 30.64M—PHONE—15,000W RUGBY, ENGLAND British Post Office Phones America evenings	10-52 : VLK 28.51M—PHONE—() SYDNEY, AUSTRALIA ..Australian Amal. Wireless Phones GBP 1-8 am	11-79 : W1XAL 25.45M—BRD—5000W BOSTON, MASS. Daily 5-11 pm irregularly Sundays 6-8 pm	13-58 : GBB 22.08M—PHONE—15,000W RUGBY, ENGLAND British Post Office Phones Canada and Egypt daytimes	15-33 : W2XAD 19.57M—BRD—25,000W SCHENECTADY, N. Y. General Electric Co. Mon., Wed., Fri. 2:30-3:30 pm and Sun. 4-5 pm	18-31 : GAS 16.38M—BRD—15,000W RUGBY, ENGLAND British Post Office Phones New York mornings
9-83 : IRU 30.52M—PHONE—25,000W ROME, ITALY Italian Radio Society Phones Egypt afternoons	10-55 : WOK 28.44M—PHONE—20,000W LAWRENCEVILLE, N. J. Phones Brazil, Argentina Peru irregularly	11-81 : I2R0 25.40M—BRD—9000W ROME, ITALY Italian Radio Company Daily Noon-1:30 pm 4-6:30 pm	14-44 : GBW 2.78M—PHONE—15,000W RUGBY, ENGLAND British Post Office. Phones NYC 6 am-6 pm and the United States	15-35 : CT1AA 19.53M—BRD—() LISBON, PORTUGAL Tests near 10 am Saturdays Tues. and Fri. 4:30-7 pm	18-34 : WLA 16.35M—PHONE—20,000W LAWRENCEVILLE, N. J. ..Amer. Telen. & Telegr. Co. Phones England 8 am-4 pm
9-86 : EAQ 30.43M—BRD—10,000W MADRID, SPAIN Transradio Espanola S. A. Daily 5:30-8 pm and Saturday 1-3 pm	10-67 : WNB 28.09M—PHONE—5000W LAWRENCEVILLE, N. J. Amer. Teleph. & Telegr. Co. Phones Bermuda daytimes	11-83 : W2XE 25.36M—BRD—5000W WAYNE, N. J. Relays WABC Daily 3-5 pm	14-47 : WMF 20.73M—PHONE—20,000W LAWRENCEVILLE, N. J. Phones England daytimes	15-49 : J1AA 19.36M—BRD—() KEMIKAWOA-CHO, JAPAN 4:30 am and late afternoons irregularly	18-40 : PCK 16.30M—PHONE—40,000W KOOTWIJK, HOLLAND Adminis. Post. and Telegr. Phones Java near 7 am and Dutch Indies
9-87 : J1AA 30.40M—EXP—() KEMIKAWOA-CHO, JAPAN 4-7 am irregularly	10-77 : CBP 27.86M—PHONE—15,000W RUGBY, ENGLAND British Post Office Phones Australia 8 am to Midnight	11-86 : GSE 25.28M—BRD—20,000W DAVENTRY, ENGLAND British Broadcasting Corp. Daily 7:30-8:45 am and 4-6 pm	14-53 : LSN 20.65M—PHONE—5000W BUENOS AIRES, ARGEN. International Radio Company Phones New York daytimes	15-62 : OCJ 19.20M—PHONE—() LIMA, PERU All America Cables, Inc. Phones CEC 2 pm irregularly	18-62 : GAU 16.11M—PHONE—15,000W RUGBY, ENGLAND British Post Office Phones New York mornings
9-87 : WON 30.40M—PHONE—20,000W LAWRENCEVILLE, N. J. Amer. Teleph. & Telegr. Co. Phones England evenings	10-97 : OCP 27.35M—PHONE—1500W LIMA, PERU All America Cables, Inc. Phones IJY evenings irregularly	11-87 : W8XK 25.27M—BRD—40,000W PITTSBURGH, PENNA. Westinghouse Electric Relay. KDKA Daily 4:30-10 pm.	14-59 : WMN 20.56M—PHONE—20,000W LAWRENCEVILLE, N. J. Phones England daytimes	15-88 : FTK 18.89M—PHONE—30,000W ST. ASSISE, FRANCE Cie Radio France Phones Saigon 8:30 to 11 am	18-83 : PLE 15.93M—PHONE—60,000W BANGCENG, JAVA Phones Europe
9-89 : LSN2 30.33M—PHONE—5000W BUENOS AIRES, ARGEN. International Radio Company Phones WLO 6 pm-6 am and 9-10 pm irregularly	11-18 : CT3AQ 26.83M—BRD—() FUNCHAL, MADERIA Tuesdays and Thursdays 5-6:30 pm Sundays 10:30 am-1 pm	11-90 : FYA 25.20M—BRD—12,000W PARIS, FRANCE Government Station 11:45 am-2:15 pm; 3-6 pm	14-98 : KAY 20.03M—PHONE—40,000W MANILA, P. I. RCA Communications Phones DPN 5-7 am and USA 7-8 pm	15-88 : FTK 18.89M—PHONE—30,000W ST. ASSISE, FRANCE Cie Radio France Phones Saigon 8:30 to 11 am	18-97 : GAQ 15.81M—PHONE—() RUGBY ENGLAND British Post Office Phones ZSS 3 am-Noon and South Africa
9-95 : GCU 30.17M—PHONE—15,000W RUGBY, ENGLAND British Post Office Phones New York evenings	11-54 : XAM 26.00M—EXP—() MERIDA, MEXICO Phones XDA 1 and 6 pm irregularly	11-95 : KKQ 25.10M—EXP—40,000W BOLINAS, CALIF. RCA Communications Phones Hawaii irregularly in the evenings	15-05 : WNC 19.92M—PHONE—400W HIALEAH, FLORIDA Amer. Teleph. & Telegr. Co. Phones HJR, RXC and YVQ daytimes	16-27 : WLC 18.44M—PHONE—20,000W OCEAN GATE, N. J. 18.44M—PHONE—()	19-35 : FTM 15.50M—PHONE—30,000W ST. ASSISE, FRANCE Cie Radio France Phones South America 10 am- 2 pm
10-05 : ZFB 29.83M—PHONE—15000W HAMILTON, BERMUDA Phones USA and ships daytimes	11-67 : PPQ 25.71M—EXP—() RIO DE JANEIRO, BRAZIL Radiotelephone Co. of Brazil Phones Europe, USA and Argentina irregularly nights	12-00 : RNE 25.00M—BRD—() MOSCOW, RUSSIA Saturdays 10-11 pm Sundays 6-7 am and 1-2 pm	15-12 : HVJ 19.84M—BRD—10,000W VATICAN CITY, ITALY Daily 5-5:15 am and near 10 am irregularly	16-27 : WLC 18.44M—PHONE—20,000W OCEAN GATE, N. J. 18.44M—PHONE—()	19-38 : WOP 15.48M—PHONE—20,000W OCEAN GATE, N. J. ..Amer. Teleph. & Telegr. Co. Phones Peru N-on-5 pm
10-22 : PSH 29.35M—PHONE—12,000W RIO DE JANEIRO, BRAZIL Phones Spain and broadcasts music in the evenings	11-70 : FYA 25.63M—BRD—() PARIS, FRANCE Daily 3 pm-Midnight	12-15 : CBS 24.69M—PHONE—15,000W RUGBY, ENGLAND British Post Office Phones New York	15-14 : GSF 19.82M—BRD—15,000W DAVENTRY, ENGLAND Daily 3-5 am	17-08 : GBC 17.56M—PHONE—5000W RUGBY, ENGLAND British Post Office Phones ships irregularly	21-02 : LSN6 14.27M—PHONE—() BUENOS AIRES, ARGEN. International Radio Company Phones WKK and WLK 8-am-4 am and Europe
10-33 : ORK 29.04M—BRD—60,000W BRUSSELS, BELGIUM Regie des Teleph. and Telegr. 1-5 pm irregularly. Phones Belgian Congo, Argentina	11-72 : VE9JR 25.60M—BRD—() WINNIPEG, CANADA Daily 6-10:30 pm Sunday 9-10 pm	12-29 : GBU 24.41M—PHONE—15,000W RUGBY, ENGLAND British Post Office Phones America evenings	15-20 : DJB 19.74M—BRD—5000W ZEEZAN, GERMANY German Reichspost Daily 8-11 am and 12:5-2 am	17-31 : W3XL 17.33M—BRD—() BOUND BROOK, N. J. Fridays 11 am-5 pm	21-42 : WKK 14.01M—PHONE—20,000W LAWRENCEVILLE, N. J. ..Amer. Teleph. & Telegr. Co. Phones South America 8 am-4 pm
10-35 : LSX 28.90M—BRD—12,000W BUENOS AIRES, ARGEN International Transradio Relays LBR 3-4 and 8-9 pm irregularly	11-73 : PHI 25.58M—BRD—20,000W HUIZEN, HOLLAND Monday, Wednesday and Fri- day 7:30-9:30 am	12-78 : GBC 23.47M—PHONE—5000W RUGBY, ENGLAND British Post Office Phones ships irregularly	15-21 : W8XK 19.72M—BRD—40,000W PITTSBURGH, PENNA. Westinghouse Electric Relays KDKA Daily 10 am- 4:15 pm	17-75 : IAC 16.90M—PHONE—14,000W COLTANA, ITALY Phones ships daily 6:30 to 7:30 am	21-54 : W8XK 13.93M—BRD—() PITTSBURGH, PENNA. Rel.ys KDKA 7 am-2 pm

Meters vs. Cycles: Kilocycles: Channels: Megacycles

There are two distinct measurements of a radio wave; first, cycles (the frequency per second) of the radio wave, and second, meters (wavelength or length of the wave). As the length in meters of the total cycles per second must equal the speed of the radio wave per second (300,000,000) the values naturally are reversible. The frequency method (cycles, kilocycles, channels, megacycles) is almost entirely in vogue in North America, even in short wave, but the Old World uses both measurements. Throughout Radio

1,000 Cycles Equal 1 Kilocycle
 10,000 Cycles Equal 1 Channel
 1,000,000 Cycles Equal 1 Megacycle

Log and Lore kilocycles are favored, in fact, the meter value is generally omitted. No value table between kilocycles, channels or megacycles is printed. This is accomplished obviously by a shifting of the decimal

point. To illustrate with the frequency of 1,000 kilocycles in the long wave span: This wave actually has a frequency of 1,000,000 cycles per second which equals 1,000 kilocycles and is commonly designated as channel 100, or the 100 channel band. In turn, it would be 1.0 megacycles for short wave usage, since there are 1,000 kilocycles in a megacycle. In these pages the comma is used in kilocycle listings (as 1,000) and by using the comma as a period the megacycle is obtained (1.0).

UNITED STATES GOVERNMENT KILOCYCLE METER CONVERSION TABLE

Meters	Cycles	Kilocycles	Channels	Megacycles
10	3000000	3000	300	3
11	2727273	2727	273	2.7
12	2500000	2500	250	2.5
13	2307692	2308	231	2.3
14	2142857	2143	214	2.1
15	2000000	2000	200	2.0
16	1875000	1875	188	1.9
17	1764706	1765	177	1.8
18	1666667	1667	167	1.7
19	1578947	1579	158	1.6
20	1500000	1500	150	1.5
21	1428571	1429	143	1.4
22	1363636	1364	137	1.4
23	1304348	1304	131	1.3
24	1250000	1250	125	1.3
25	1200000	1200	120	1.2
26	1153846	1154	116	1.2
27	1114286	1114	112	1.1
28	1080000	1080	108	1.1
29	1051724	1052	106	1.1
30	1028571	1029	103	1.0
31	1010000	1010	101	1.0
32	996094	996	99	1.0
33	984615	985	98	1.0
34	975000	975	97	1.0
35	967059	967	96	1.0
36	960000	960	96	1.0
37	954545	955	95	1.0
38	950000	950	95	1.0
39	946154	946	94	1.0
40	942857	943	94	1.0
41	940000	940	94	1.0
42	937619	938	93	1.0
43	935652	936	93	1.0
44	934091	934	93	1.0
45	932857	933	93	1.0
46	931887	932	93	1.0
47	931111	931	93	1.0
48	930500	931	93	1.0
49	930000	930	93	1.0
50	929600	930	93	1.0
51	929273	929	93	1.0
52	929000	929	93	1.0
53	928769	929	93	1.0
54	928571	929	93	1.0
55	928409	928	93	1.0
56	928273	928	93	1.0
57	928161	928	93	1.0
58	928061	928	93	1.0
59	928000	928	93	1.0
60	927957	928	93	1.0
61	927914	928	93	1.0
62	927873	928	93	1.0
63	927833	928	93	1.0
64	927794	928	93	1.0
65	927756	928	93	1.0
66	927719	928	93	1.0
67	927683	928	93	1.0
68	927648	928	93	1.0
69	927614	928	93	1.0
70	927581	928	93	1.0
71	927549	928	93	1.0
72	927518	928	93	1.0
73	927488	928	93	1.0
74	927459	928	93	1.0
75	927431	928	93	1.0
76	927404	928	93	1.0
77	927378	928	93	1.0
78	927353	928	93	1.0
79	927329	928	93	1.0
80	927306	928	93	1.0
81	927284	928	93	1.0
82	927263	928	93	1.0
83	927243	928	93	1.0
84	927224	928	93	1.0
85	927206	928	93	1.0
86	927189	928	93	1.0
87	927173	928	93	1.0
88	927158	928	93	1.0
89	927144	928	93	1.0
90	927131	928	93	1.0
91	927119	928	93	1.0
92	927108	928	93	1.0
93	927098	928	93	1.0
94	927089	928	93	1.0
95	927081	928	93	1.0
96	927074	928	93	1.0
97	927068	928	93	1.0
98	927063	928	93	1.0
99	927059	928	93	1.0
100	927056	928	93	1.0

“My Favorite”

PROGRAMS

	Time	Channel	Station
Sunday			
Monday			
Tuesday			
Wednesday			
Thursday			
Friday			
Saturday			

ULTRA SHORT; ULTRA LONG

THE SHORT WAVES

This Line Illustrates a 6-Meter (50,000-Kilocycle) Wave Traveling 100 Cycles of 6 Meters Each or 600 Meters

This Line Illustrates a 60-Meter (5,000-Kilocycle) Wave Traveling 10 Cycles of 60 Meters Each or 600 Meters

This Line Illustrates a 100-Meter (3,000-Kilocycle) Wave Traveling 6 Cycles of 100 Meters Each or 600 Meters

THE LONG WAVES

This Line Illustrates a 200-Meter (1,500-Kilocycle) Wave Traveling 3 Cycles of 200 Meters Each or 600 Meters

This Line Illustrates a 300-Meter (1,000-Kilocycle) Wave Traveling 2 Cycles of 300 Meters Each or 600 Meters

This Line Illustrates one 600-Meter (500-Kilocycle) Wave for Purposes of Comparison

These lines are correct reproductions of the relative length of radio waves—from the ultra short (50,000 kilocycles) to the ultra long (500 kilocycles) just outside the broadcast band.

In North America, long wave broadcasting begins at 550 and ends at 1500 kilocycles; but in Europe, stations are assigned as high as 155 kilocycles. Short wave is generally known as the frequencies below 3000 kilocycles.

Why **WAVE LENGTHS (METERS) DECREASE** *As*
FREQUENCIES (CYCLES) INCREASE
Meters Multiplied By Cycles Must Equal
Distance the Wave Travels Per Second

As a kilocycle is equivalent to one thousand cycles, it will readily be seen that the ultra short wave illustrated at the top of this page, known as the 50,000 kilocycle wave, is in reality a 50,000,000 cycle wave, meaning that 50,000,000 is the number of cycles it makes in one second. As radio waves are known to travel 300,000,000 meters per second, it follows that a wave making 50,000,000 cycles per second must travel in cycles or waves of 6 meters each in order to travel at its given speed of 300,000,000 meters per second. This particular ultra-short wave is known either as a 50,000,000 cycle (or 50,000 kilocycles) wave, from the number of waves it makes a second, or as a 6-meter wave, the length of each wave so covered. Thus it is in each of the waves illustrated above. The number of cycles described by the wave multiplied by meters (the length of each wave) must equal the 300,000,000 meters each wave must travel in one second, bearing in mind that one kilocycle is the equivalent of 1,000 cycles. Thus do wavelengths (meters) and frequencies (kilocycles) increase and decrease conversely, not unlike the tall and the short man walking side by side. The latter takes more steps (kilocycles) but shorter ones (meters) than the tall man who takes fewer but longer steps and reaches his destination at the same time.

This illustration is presented, however, not to emphasize the theory of meter and kilocycle designation, but to illustrate the great difference between even the short waves themselves—the 100-meter wave and the ultra short 6-meter wave, which descends into an almost straight line of tiny pulsations.

So called short waves are below 100 meters and long waves, utilized for program broadcasting, above. Practically all broadcasting assignments are between the 500 kilocycle (600 meter) wave at the bottom and the 1500 kilocycle (200 meter) wave above, while practically all short wave broadcasting and commercial communications are carried on between the 6 and 100 meter bands.

It is interesting to note that the six waves, from the ultra-short to the ultra-long, actually travel the 600 meters as pictured above in a five hundred thousandth part of a second.