



• RCA RADIOTRON •
RADIO LOG



LOOK INSIDE THE RADIO CABINET BEFORE YOU BUY

WHEN you buy one of the fine new radio sets now being offered, be sure that you look at the tubes before you purchase it. Make sure that the set you buy is equipped with **RCA Radiotrons**.

For years leading set manufacturers have recommended that you use **RCA Radiotrons** in order that you may get out of your set everything they have **built** into it. Don't gamble with your radio enjoyment. Make certain that your new set is delivered equipped with **RCA Radiotrons**—the standard **tubes** of the industry.

Copyright 1931
RCA Radiotron Co., Inc.
Harrison, N. J.



JACK FOSTER

The RCA RADIOTRON Radio Log

*With Biographical Sketches by Jack Foster,
Radio Editor, New York World-Telegram*

IT HAS been the aim of the publishers of this Radio Log to give you information which will enable you to better enjoy the marvels of radio.

In addition to a complete cross indexed listing of all broadcasting stations on the North American Continent, as well as the principal short-wave stations of the world, this Radio Log has many other features, not the least of which are the biographical sketches of the leading radio artists.

These authentic sketches are by Jack Foster, Radio Editor of the New York World-Telegram. Few writers know as intimately as does Jack Foster the lives of those we hear each night on the air. These sketches will enable you to know your favorite artists.

The RCA Radiotron Radio Log

United States Broadcasting Stations

Call Letters	TRANSMITTER LOCATION	Power Watts	Kilo-cycles	Dial Setting	Kilocycle Index
WAAB	Quincy, Mass.		1410		550 KC WGR
WAAF	Chicago, Ill.	500	920		Buffalo, N. Y.
WAAM	Newark, N. J.	2000	1250		550 KC WKRC
	Shares with WGCP- WODA				Cincinnati, Ohio
WAAT	Jersey City, N. J. . . .	300	940		550 KC KFUD
WAAW	Omaha, Nebr.	500	660		Clayton, Mo.
WABC	New York City.	5000	860		550 KC KSD
WBOQ				St. Louis, Mo.	
WABI	Bangor, Me.	100	1200		550 KC KFDY
WABO	(See WHEC-WABO)				Brookings, S. Dak.
WHEC				550 KC KFVR	
WABZ	New Orleans, La. . . .	100	1200		Bismarck, N. Dak.
	Shares with WJBW				550 KC KOAC
WACO	Waco, Tex.	1000	1240		Corvallis, Oreg.
	Shares with KTAT				560 KC WLIT
WADC	Tallmadge, Ohio. . . .	1000	1320		Philadelphia, Pa.
WAGM	Mars Hill, Me.	100	1420		560 KC WFI
WAIU	Columbus, Ohio. . . .	500	640		Philadelphia, Pa.
WALR	Zanesville, Ohio. . . .	100	1210		560 KC WQAM
WAPI	Birmingham, Ala. . . .	5000	1140		Miami, Fla.
	Shares with KVOO				560 KC KFDM
WASH	Grand Rapids, Mich. . .	500	1270		Braumont, Tex.
	Shares with WOOD				560 KC WNOX
WAWZ	Zarephath, N. J. . . .	250	1350		Knoxville, Tenn.
	Shares with WCDA, WMSG and WBX				560 KC WIBO
WBAA	W. Lafayette, Ind. . . .	1000	1400		Chicago, Ill.
	Shares with WCMA- WKBF				560 KC WPCC
WBAK	Harrisburg, Pa.	1000	1430		Chicago, Ill.
	Shares with WHIP- WCAH				560 KC KLZ
					Denver, Colo.
					560 KC KTAB
					San Francisco, Calif.
					570 KC WNYC
					New York, N. Y.
					570 KC WMCA
					New York, N. Y.

RCA Radiotrons—the preference of radio experts

Studio Slang—A Colorful New Language

The early pioneer days in radio broadcasting created many new expressions, some vagrant, some unpopular. Many of them were short lived. But there are many slang words and phrases now recognized, widely used and readily understood by production men, announcers, and studio engineers.

Here is an interesting list of some of the words, each with its singular meaning:

"Adenoid tenor:" one with a "tight" voice.

"Announcer's delight:" sarcastically applied to the announcer's control box in the studio, a complex instrument with rows of lights.

"Berdie:" the tweet-tweet sound occasionally encountered on long-distance transmission lines.

"Blasty:" the blasting sound, too much volume.

"Bug juice:" a term describing carbon tetrachloride.

"Bugs:" trouble in equipment caused by something not immediately obvious.

"Cans:" headphones.

"Corn fed:" when the performance of either a singer or instrumentalist lacks culture.

"Cross-fire:" Morse telegraph codes picked up by program lines.

"Cross-talk:" conversation picked up from a foreign source.

"Cross-tone:" foreign tones picked up.

"Down in the mud:" a very low reproduction volume.

"Electrical transcription:" broadcasting a program recorded on a record.

"Fade in" or "fade out:" gradual reduction or increase in volume, respectively.

"Fighting the music:" lacking ease in singing.

"Fill in:" those who stand by to go on the air in case a program change must be made.

"Final shot:" the last test of a program originating outside the main studio.

"Fuzzy:" a voice lacking in clarity.

"Gelatine tenor:" one with vibrato or tremolo in his voice.

"Haywire:" relates to equipment in poor condition.

"Hold it down:" an order directed to studio engineer to reduce the volume.

UNITED STATES BROADCASTING STATIONS

Call Letters	TRANSMITTER LOCATION	Power Watts	Kilo-cycles	Dial Setting	Kilocycle Index
WBAL	Baltimore, Md. Shares with WTIC	10000	1060		570 KC WSYR- WMAC
WBAP	Fort Worth, Tex. Shares with WFAA	10000	800		Syracuse, N. Y. 570 KC WKBN
WBAX	Wilkes-Barre, Pa. Shares with WJBU	100	1210		Youngstown, Ohio 570 KC WEAO
WBBC	Brooklyn, N. Y. Shares with WCGU- WLTH-WFOX	500	1400		Columbus, Ohio 570 KC WWNC
WBBL	Richmond, Va.	100	1210		Asheville, N. C. 570 KC KGKO
WBBM	Chicago, Ill. Shares with KFAB	25000	770		570 KC WNAX
WJBT				Yankton, S. Dak.	
WBBR	Brooklyn N. Y. Shares with WHAZ- WHAP-WEVD	1000	1300		570 KC KXA Seattle, Wash.
WBBZ	Ponca City, Okla.	100	1200		570 KC KMTR Los Angeles, Calif.
WBCM	Bay City, Mich.	500	1410		580 KC WTAG Worcester, Mass.
WBCN	(See WENR)				580 KC WOBU Charlottesville, W. Va.
WBEN	Buffalo, N. Y.	1000	900		580 KC WSAZ Huntington, W. Va.
WBEO	Marquette, Mich.	100	1310		580 KC KGFX Pierre, S. Dak.
WBGF	Glens Falls, N. Y.	50	1370		580 KC WIBW Topeka, Kans.
WBHS	Huntsville, Ala.	50	1200		580 KC KSAC Manhattan, Kans.
WBIG	Greensboro, N. C.	500	1440		590 KC WEEI Boston, Mass.
WBIS	(See WNAC-WBIS)				590 KC WKZO Berrion Springs, Mich.
WNAC				Lincoln, Nebr.	
WBMS	Hackensack, N. J. Shares with WNJ- WKBO-WHOM	250	1450		590 KC WOW Omaha, Nebr.
WBNX	New York City Shares with WAWZ- WMSG-WCDA	250	1350		590 KC KHQ Spokane, Wash.
WBOQ	(See WABC-WBOQ)				600 KC WCAC Starrs, Conn.
WABC				Baltimore, Md.	
WBOW	Terre Haute, Ind.	100	1310		600 KC WCAO Baltimore, Md.
WBRC	Birmingham, Ala.	1000	930		600 KC WGBS New York, N. Y.
WBRE	Wilkes-Barre, Pa.	100	1310		
WBSO	Needham, Mass.	500	920		
WBT	Charlotte, N. C.	5000	1080		

*When experts agree on RCA Radiotrons—why
take chances?*

Studio Slang—A Colorful New Language

(Continued)

"Hot switch:" a rapid program transfer from one point of origin to another.

"Killie luo luo:" a flighty coloratura soprano who sings with a florid style.

"Line hits:" when overhead transmission wires contact accidentally, usually during storms.

"Lock jaw:" the voice of one who sings as if tired.

"Nemo:" programs originating outside of studio.

"Nervous baritone:" one who over-emphasizes the dramatic effect.

"Old sexton:" a bass with a sepulchral voice.

"On the beach:" out of a job, unemployed.

"On the log:" an entry in the studio record, complimentary or otherwise.

"On the nose:" a radio program executed according to schedule.

"On the pipe:" answer the telephone.

"Peaks" or "kacks:" the maximum point of the needle swing on a volume indicator.

"Riding gain:" keeping program volume within practicable limits.

"Scratches:" a noise caused by faulty equipment.

"Scooper:" A singer, usually a contralto, who slides up and down the scale without distinguishing clearly between notes.

"Short voice:" one with a limited range.

"Standby:" a warning to get ready to take the air.

"Standbys:" alternatives for programs on the air.

"Sour" or "blue:" voice or instrument off pitch.

"Talking in his beard:" a muffled voice.

"The King:" the engineer on duty at the master control desk who supervises all operations.

"Thick:" when the individual instruments in a group selection are not distinguishable.

"Throne:" master control desk.

"Town crier:" one who sings too loud.

"Up three miles:" indicates very high amount of units or volume of reproduction.

"Wooden voice:" lacks clarity and expression.

"Woof:" a word used frequently in making tests, but having no meaning.

UNITED STATES BROADCASTING STATIONS

Call Letters	TRANSMITTER LOCATION	Power Watts	Kilo-cycles	Dial Setting	Kilocycle Index
WBTM	Danville, Va. Shares with WLVA	100	1370		600 KC WREC WOAN
WBZ	Springfield, Mass. Shares with WBZA	15000	990		Memphis, Tenn. 600 KC WMT
WBZA	Boston, Mass. Shares with WBZ	500	990		Wattston, Iowa 600 KC KFSD
WCAC	Storrs, Conn. Shares with WGBS	250	600		San Diego, Calif. 610 KC WJAY
WCAD	Canton, N. Y.	500	1220		Cleveland, Ohio 610 KC WFAN
WCAE	Pittsburgh, Pa.	1000	1220		Philadelphia, Pa. 610 KC WIP
WCAH	Columbus, Ohio. Shares with WHP- WBAK	500	1430		Philadelphia, Pa. 610 KC WDAF
WCAJ	Lincoln, Nebr. Shares with WOW	500	590		Kansas City, Mo. 610 KC KFRC
WCAL	Northfield, Minn. Shares with KFMX- WRHM-WLB	1000	1250		San Francisco, Calif. 620 KC WLBZ
WCAM	Camden, N. J. Shares with WOAX- WCAP	500	1280		Bangor, Me. 620 KC WFLA- WSUN
WCAO	Baltimore, Md.	250	600		Clearwater, Fla. 620 KC WTMJ
WCAP	Asbury Park, N. J. Shares with WCAM- WOAX	500	1280		Milwaukee, Wis. 620 KC KGW
WCAT	Rapid City, S. D.	100	1200		Portland, Oreg. 620 KC KTAR
WCAU	Philadelphia, Pa.	10000	1170		Phoenix, Ariz. 630 KC WMAL
WCAX	Burlington, Vt. Shares with WNBX	100	1200		Washington, D. C. 630 KC WOS
WCAZ	Carthage, Ill.	50	1070		Jefferson City, Mo. 630 KC KFRU
WCBA	Allentown, Pa. Shares with WSAN	250	1440		Columbia, Mo. 630 KC WGBF
WCBD	Zion, Ill. Shares with WMBI	5000	1080		Evansville, Ind. 640 KC WAIU
WCBM	Baltimore, Md.	250	1370		Columbus, Ohio 640 KC WOI
WCBS	Springfield, Ill. Shares with WTAX	100	1210		Ames, Iowa 640 KC KFI
WCCO	Minneapolis, Minn.	7500	810		Los Angeles, Calif. 650 KC WSM
					Nashville, Tenn. 650 KC KPCB
					Seattle, Wash.

*Progress in the radio art is measured by the
development of RCA Radiotrons*

BEN BERNIE



AND now we're going to talk about the "Old Maestro"—Ben Bernie. Of course, you've already heard his incessant and pleasing wise-cracking which punctuates his weekly broadcast over a Columbia network. This, probably more than anything else, has made him one of our most popular band leaders.

At seventeen, his novel sales talk to a customer who came to buy a violin at the music store where Ben worked resulted in his signing a vaudeville contract. And he changed his real name, Ancel, to Bernie. He had learned to play the violin at the age of six, in his father's blacksmith shop beneath Brooklyn Bridge, and at 13 gave a concert in Carnegie Hall. But his father insisted that he study to be an engineer and this resulted in several years at Columbia University School of Mines and Engineering and at Cooper Institute. The mistake of this soon became evident and then Bernie went into vaudeville. His first partner in a three-a-day act was Phil Baker and they played together from 1910 until the World War.

Admiration for Paul Whiteman inspired him to become a band leader while he was playing vaudeville alone, doing violin solos and monologue. Paul was playing at the famous old Palais Royale in New York at the time.

But it is his smart-cracking, his deft skill at kidding himself, his band, his Pat Kennedy, the whole world, that has made him such a pleasant radio companion. One of his brightest yarns he told the other day after his Blue Ribbon Malt program. It seems that Ben was ready to tee off for the third hole in his daily golf match when an excited individual rushed up to him.

"Pardon me, sir," said the E. I. "Do you mind if I play through? I've just heard that my wife has been taken seriously ill."

UNITED STATES BROADCASTING STATIONS

Call Letters	TRANSMITTER LOCATION	Power Watts	Kilo-cycles	Dial Setting	Kilocycle Index
WCDA	New York City Shares with WBNX- WMSG-WAWZ	250	1350		660 KC WEAF New York, N. Y. 660 KC WAAW Omaha, Nebr.
WCFL	Chicago, Ill.	1500	970		670 KC WMAQ Chicago, Ill.
WCGU	Brooklyn, N. Y. Shares with WLTH- WBBC-WFOX	500	1400		680 KC WPTF Raleigh, N. C.
WCHI	Chicago, Ill. Shares with WJAZ- WCKY	5000	1490		680 KC KFEQ St. Joseph, Mo. 680 KC KPO San Francisco, Calif.
WCKY	Covington, Ky. Shares with WCHI- WJAZ	500	1490		700 KC WLW Cincinnati, Ohio
WCLB	Brooklyn, N. Y. Shares with WWRL- WLBX-WMBQ	100	1500		710 KC WOR Newark, N. J. 720 KC WGN- WLIP
WCLO	Janesville, Wis.	100	1200		Chicago, Ill.
WCLS	Joliet, Ill. Shares with WKBB	100	1310		740 KC WSB Atlanta, Ga.
WCMA	Culver, Ind. Shares with WBAA- WKBF	500	1400		740 KC KMMJ Clay Center, Nebr. 750 KC WJR Detroit, Mich.
WCOA	Pensacola, Fla.	500	1340		760 KC WJZ New York, N. Y.
WCOC	Meridian, Miss.	1000	880		760 KC WEW St. Louis, Mo.
WCOD	Harrisburg, Pa. Shares with WKJC	100	1200		760 KC KVI Tacoma, Wash.
WCOH	Yonkers, N. Y. Shares with WJBI- WGBB-WMRJ	100	1210		770 KC KFAB Lincoln, Nebr.
WCRW	Chicago, Ill. Shares with WSBC- WEDC	100	1210		770 KC WBBM- WJBT Chicago, Ill.
WCSC	Charleston, S. C.	500	1360		780 KC WEAN Providence, R. I.
WCSH	Portland, Me.	1000	940		780 KC WTAH- WPOR Norfolk, Va.
WDAE	Tampa, Fla.	1000	1220		780 KC WMC Memphis, Tenn.
WDAF	Kansas City, Mo.	1000	610		780 KC KELW Burbank, Calif.
WDAG	Amarillo, Tex. Shares with KGRS	250	1410		780 KC KTM Los Angeles, Calif.
WDAH	El Paso, Tex. Shares with KTSM	100	1310		

Every RCA Radiotron is thoroughly tested before it is enclosed in the Red and Black carton

RUSS COLUMBO



ALTHOUGH his real name is Ruggiero Eugenio di Rodolpho Columbo, you probably know him as "Russ" and have heard a lot of people talking about him by now. Since he came to New York from the West Coast and signed with NBC September 5, 1931, his rise to radio popularity has been nothing short of miraculous. Probably the best known of his tunes is his theme song "You Call It Madness" which he wrote in collaboration with Con Conrad.

Russ started out in life to become a violinist. By the time he was sixteen he was playing at concerts, and when the family moved from San Francisco to Los Angeles a year later he joined an orchestra, playing and singing at the Mayfair Hotel there. For several years he played at hotels and in movie palaces, ending up at the Coconut Grove in the Ambassador Hotel. He left there for Paramount where he played second leads and doubled in numerous pictures with stars such as Gary Cooper and Lupe Velez. Later, he opened his own club in Los Angeles, The Pyramid, and after four weeks of success in that venture met Conrad, who persuaded him to come East.

The rest is history. Numerous theatrical offers as well as refusals grew insignificant after an audition at NBC. After a four-week try-out his fan mail grew beyond all expectations, and a year's contract was the result. Off the air, Russ is a rather shy person, not yet able to comprehend his success. He's five feet eleven inches and weighs 175 pounds. Dark eyes and sleek black hair betray his Latin inheritance. He prefers grand opera to any music, Stravinsky being his favorite composer. He likes to read, particularly the poetry of Longfellow and Poe. His greatest worry is that he might fall in love. How old is he? Born January 14, 1905. Figure it out for yourself.

UNITED STATES BROADCASTING STATIONS

Call Letters	TRANSMITTER LOCATION	Power Watts	Kilo-cycles	Dial Setting	Kilocycle Index
WDAY	Fargo, N. Dak.	1000	940		790 KC WGY Schenectady, N. Y.
WDBJ	Roanoke, Va.	500	930		790 KC KGO
WDBO	Orlando, Fla.	1000	1120		San Francisco, Calif.
WDEL	Wilmington, Del.	350	1120		800 KC WBAP Fort Worth, Tex.
WDEV	Waterbury, Vt.	50	1420		800 KC WFAA Dallas, Tex.
WDGY	Minneapolis, Minn. Shares with WHDI	1000	1180		810 KC WPCH New York, N. Y.
WDIX	Tupelo, Miss.	100	1500		810 KC WCCO Minneapolis, Minn.
WDOD	Chattanooga, Tenn.	2500	1280		820 KC WHAS Louisville, Ky.
WDRC	Hartford, Conn.	500	1330		830 KC WEEU Reading, Pa.
WDSU	New Orleans, La.	1000	1250		830 KC WHDH Boston, Mass.
WDFW	Providence, R. I. Shares with WPAW	100	1210		830 KC WRUF Gainesville, Fla.
WLSI					
WDZ	Tuscola, Ill.	100	1070		830 KC KOA Denver, Colo.
WEAF	New York City	50000	660		850 KC KWKH Shreveport, La.
WEAI	Ithaca, N. Y.	1000	1270		850 KC WWL New Orleans, La.
WEAN	Providence, R. I.	500	780		860 KC WABC- WBOQ New York, N. Y.
WEAO	Columbus, Ohio Shares with WKBN	750	570		860 KC WHB Kansas City, Mo.
WEBC	Superior, Wis.	2500	1290		860 KC KMO Tacoma, Wash.
WEBQ	Harrisburg, Ill. Shares with KFVS	100	1210		870 KC WLS Chicago, Ill.
WEBR	Buffalo, N. Y.	200	1310		870 KC WENR- WBCN Chicago, Ill.
WEDC	Chicago, Ill. Shares with WCRW- WSBC	100	1210		880 KC WGBI Scranton, Pa.
WEDH	Erie, Pa.	100	1420		880 KC WQAN Scranton, Pa.
WEEI	Boston, Mass.	1000	590		880 KC WCOC Meridian, Miss.
WEEU	Reading, Pa.	1000	830		880 KC WSUI Iowa City, Iowa
WEHC	Emory, Va.	250	1200		
WEHS	Evanston, Ill. Shares with WKBI WHFC	100	1420		
WELK	Philadelphia, Pa.	250	1370		
WELL	Battle Creek, Mich.	50	1420		

RCA Radiotrons—the hallmark of a good radio set

PHIL COOK

OPEN your booklet at this page and read this portrait the next time you're listening to the Quaker Crackels Man:



Phil was born in Coldwater, Mich., thirty-one years ago. So, of course, he came to New York. He twists a nifty blond mustache and peers at you through round blue eyes. He's known as the "Lon Chaney of the Air" because of his repertoire of roles. He says it's hardest to impersonate an Irishman and easiest to impersonate an old man. He learned how to impersonate an Italian by talking to a bootblack.

It's really quite by chance that Phil now is one of the air's highest paid wits. Three years ago, after a number of discouragements, he had about decided to give up broadcasting. But, on second thought, he chose to stick at it a little longer and a lucky break brought him several Fleischmann contracts, and later, the Aunt Jemima Pancake and Crackels accounts.

He's married and has a daughter, Phyllis, a little over a year old. He met Flo Helmar in the eighth grade in East Orange, N. J., where he had been brought as a lad to live, and when she was 21 and he 23, they were married. Their home is in Avon, N. J., and it's his greatest sorrow that his work is so exacting he seldom has a chance to go home except on week-ends.

Seldom does he take fewer than six characters during a broadcast. He apologizes for all his jokes, but the listeners write to rave about how consistently amusing he is. He hopes one day to be financially able to retire and devote all his time to his hobby—painting magazine covers.

UNITED STATES BROADCASTING STATIONS

Call Letters	TRANSMITTER LOCATION	Power Watts	Kilo-cycles	Dial Setting	Kilocycle Index
WENR } WBCN }	Chicago, Ill. Shares with WLS	50000	870		880 KC KLX Oakland, Calif.
WEPS } WORC }	(See WORC-WEPS)				880 KC KPOF Denver, Colo.
WEVD	New York City Shares with WBBR- WHAP-WHAZ	500	1300		880 KC KFKA Greeley, Colo.
WEW	St. Louis, Mo.	1000	760		890 KC WJAR Providence, R. I.
WEXL	Royal Oak, Mich.	50	1310		890 KC WKAQ San Juan, P. R.
WFAA	Dallas, Tex. Shares with WBAP	50000	800		890 KC WMMN Fairmont, W. Va.
WFAM	La Porte, Ind.	100	1200		890 KC WGST Atlanta, Ga.
WFAN	Philadelphia, Pa. Shares with WIP	500	610		890 KC KGJF Little Rock, Ark.
WFBC	Knoxville, Tenn.	50	1200		890 KC WILL Cibola, Ill.
WFBE	Cincinnati, O.	250	1200		890 KC KUSD Vermillion, S. Dak.
WFBG	Altoona, Pa. Shares with WJAC	100	1310		890 KC KFNF Shenandoah, Iowa
WFBL	Syracuse, N. Y.	1000	1360		900 KC WBEN Buffalo, N. Y.
WFBM	Indianapolis, Ind. Shares with WSBT	1000	1230		900 KC WKY Oklahoma City, Okla.
WFBR	Baltimore, Md.	500	1270		900 KC WJAX Jacksonville, Fla.
WFDF	Flint, Mich.	100	1310		900 KC WLBL Stevens Point, Wis.
WFDV	Rome, Ga.	100	1310		900 KC KHJ Los Angeles, Calif.
WFDW	Talledega, Ala.	100	1420		900 KC KSEI Pocatello, Idaho
WFEA	Manchester, N. H.	500	1430		900 KC KGBU Ketchikan, Alaska
WFI	Philadelphia, Pa. Shares with WLIT	500	560		900 KC WBSO Needham, Mass.
WFIW	Hopkinsville, Ky.	1000	940		920 KC WWJ Detroit, Michigan
WFLA } WSUN }	Clearwater, Fla.	2500	620		920 KC KPRC Houston, Texas
WFOX	Brooklyn, N. Y. Shares with WCGU- WLTH-WBBC	500	1400		920 KC WAAF Chicago, Ill.
WGAL	Lancaster, Pa. Shares with WRAW	100	1310		920 KC KOMO Seattle, Wash.
WGAR	Cleveland, O.	500	1450		

RCA Radiotrons—standard for every use



COON-SANDERS

IN THE first place, they're two men and they're not colored, though the band was probably the first to introduce Negro spirituals. Carlton Coon, pictured at the left, hammers the drums and Joe Sanders tickles the ivories and sings through a megaphone. They've come to the Hotel New Yorker after having swept the Middlewest for over ten years with their ecstatic melodies and tomfoolery.

You veteran tuners will fondly recall them as the old Kansas City Night Hawks who held forth with their nonsense from station WDAF. Remember their mad antics, their vociferous music, their dinner bell that initiated a new member to the sleepless fraternity? Well, this was 'round about 1922 when squealing single circuit sets were coming into existence, but it was in 1918 that they joined to form their first orchestra. They were in uniform then and after being honorably discharged they moved into Kansas City's Muehlebach Hotel with a five-piece outfit.

Their immediate popularity rocketed them into the Newman Theatre there where they played for seventy-two consecutive weeks. They also barnstormed throughout the Middlewest. In Chicago they played at three different clubs before finally settling down at the Blackhawk where they stayed for five consecutive years.

Both are athletic. Coon, who studied medicine at Kansas University, played on the football varsity. Sanders was a ball player and rated Robert L. Ripley's "Believe It or Not" cartoon by striking out twenty-seven men in a regulation nine-inning game.

UNITED STATES BROADCASTING STATIONS

Call Letters	TRANSMITTER LOCATION	Power Watts	Kilo-cycles	Dial Setting	Kilocycle Index
WGBB	Freeport, N. Y. Shares with WJBI- WCOH-WMRJ	100	1210		920 KC KFEL Denver, Colo.
WGBC	Memphis, Tenn. Shares with WNBR	500	1430		920 KC KFXF Denver, Colo.
WGBF	Evansville, Ind. Shares with WOS- KFRU	500	630		930 KC WIBG Elkins Park, Pa.
WGBI	Scranton, Pa. Shares with WQAN	250	880		930 KC WDBJ Roanoke, Va.
WGBS	New York City Shares with WCAC	500	600		930 KC WBRC Birmingham, Ala.
WGCM	Gulfport, Miss.	100	1210		930 KC KGBZ York, Nebr.
WGCP	Newark, N. J. Shares with WODA- WAAM	250	1250		930 KC KMA Menasha, Iowa
WGES	Chicago, Ill. Sunday Shares with WJKS	500 1000	1360		930 KC KFWI San Francisco, Calif.
WGH	Newport News, Va.	100	1310		930 KC KROW Oakland, Calif.
WGL	Ft. Wayne, Ind.	100	1370		940 KC WAAT Jersey City, N. J.
WGMS	(See WLB-WGMS)				940 KC WCSH Portland, Me.
WLB					940 KC WFTW Hickinsville, Ky.
WGN	Chicago, Ill.	25000	720		940 KC WHA Madison, Wis.
WLIB					
WGR	Buffalo, N. Y.	1000	550		940 KC KOIN Portland, Oreg.
WGST	Atlanta, Ga. Shares with WMAZ	500	890		940 KC KGU Honolulu, Hawaii
WGY	Schenectady, N. Y.	50000	790		950 KC WRC Washington, D. C.
WHA	Madison, Wis.	750	940		950 KC KMBC Kansas City, Mo.
WHAD	Milwaukee, Wis. Shares with WISN	250	1120		950 KC KFWR Hollywood, Calif.
WHAM	Rochester, N. Y.	5000	1150		950 KC KGHL Billings, Mont.
WHAP	New York City Shares with WBBR- WEVD-WHAZ	1000	1300		970 KC WCFL Chicago, Ill.
WHAS	Louisville, Ky.	10000	820		970 KC KJR Seattle, Wash.
WHAT	Philadelphia, Pa. Shares with WTEL	100	1310		980 KC KDKA Pittsburgh, Pa.

A radio set can be no better than its vacuum tubes—
Use RCA Radiotrons

BING CROSBY



MEET Bing Crosby—one of radio's newest personalities. His parents christened him Harry, but his fondness for playing Indian and cowboy games, wherein he used to shout "Bing! Bing!" as imaginary bullets felled his companions, brought him his nickname. He's only 27 and promises to become one of radio's better liked entertainers.

The Crosby style of rendering popular song hits already has caused innumerable controversies. But there's no denying that the California boy started something when he accepted an offer from a Los Angeles booking office in 1926.

Since that time he has appeared in theaters throughout this country as well as in Mexico and Canada. He first attracted sensational attention when he worked with Paul Whiteman and the Rhythm Boys in the Cocomanut Grove, Los Angeles, a few years ago.

It was the success of his records, particularly, which caused the great bidding for his services when he bounced into New York last summer. The NBC and Columbia made spirited offers and counter-offers until Columbia finally had its way at \$1500 a week, the largest sum ever paid for a sustaining artist. Despite the fact that he was hampered by a nasty dose of laryngitis during his early New York broadcasts, he has been signed by Cremo under a long-time contract.

Bing is five feet nine inches tall and weighs 167 pounds. His eyes are blue and twinkling and his hair is brown. He speaks in a husky voice. So seriously does he take his broadcasting that often he rehearses an hour for a fifteen-minute program. His favorite conductor is Toscanini. Attends the movies frequently and Doug Fairbanks, Jr. is his favorite flicker actor. Golf is his favorite sport and he always wears a lemon yellow scarf.

UNITED STATES BROADCASTING STATIONS

Call Letters	TRANSMITTER LOCATION	Power Watts	Kilo-cycles	Dial Setting	Kilocycle Index
WHAZ	Troy, N. Y. Shares with WBRR- WHAP-WEVD	500	1300		990 KC WBZ Springfield, Mass. 990 KC WBZA Boston, Mass.
WHB	Kansas City, Mo.	500	860		1000 KC WHO Des Moines, Iowa
WHBC	Canton, Ohio. Shares with WNBO Sundays	10	1200		1000 KC WOC Davenport, Iowa
WHBD	Mt. Orab, Ohio.	100	1370		1000 KC KFVD Colver City, Calif.
WHBF	Rock Island, Ill.	100	1210		1010 KC WLAP Louisville, Ky.
WHBL	Sheboygan, Wis. Shares with KFLV	500	1410		1010 KC WQAO- WPAP New York, N. Y.
WHBQ	Memphis, Tenn.	100	1370		1010 KC WHN New York, N. Y.
WHBU	Anderson, Ind.	100	1210		1010 KC WRNY New York, N. Y.
WHBY	Green Bay, Wis.	100	1200		1010 KC KGGF South Coffeyville, Okla.
WHDF	Calumet, Mich.	250	1370		1010 KC WNAD Norman, Okla.
WHDH	Boston, Mass.	1000	830		1010 KC WIS Columbia, S. C.
WHDI	Minneapolis, Minn. Shares with WDGJ	500	1180		1010 KC KQW San Jose, Calif.
WHDL	Tupper Lake, N. Y.	100	1420		1020 KC WRAX Philadelphia, Pa.
WHEC WABO	Rochester, N. Y. Shares with WOKO	500	1440		1020 KC KYW- KFKX Chicago, Ill.
WHFC	Cicero, Ill. Shares with WKBI- WEHS	100	1420		1040 KC WMAK Buffalo, N. Y.
WHIS	Bluefield, W. Va.	250	1420		1040 KC WKAR East Lansing, Mich.
WHK	Cleveland, Ohio.	1000	1390		1040 KC KTHS Hot Springs National Park, Ark.
WHN	New York City Shares with WRNY- WQAO-WPAP	250	1010		1040 KC KRLD Dallas, Tex.
WHO	Des Moines, Iowa. Shares with WOC	5000	1000		1050 KC KFKB Milford, Kans.
WHOM	Jersey City, N. J. Shares with WBMS- WNJ-WKBO	250	1450		1050 KC KNX Hollywood, Calif.
WHP	Harrisburg, Pa. Shares with WBAK-WCAH	1000	1430		
WIAS	Ottumwa, Iowa	100	1420		
WIBA	Madison, Wis.	500	1280		

Change your tubes once a year—Use RCA Radiotrons

MORTON DOWNEY



OF ALL the radio singers who have risen to popularity within the last few months, Morton Downey has carved one of the most distinctive niches for himself. With a high, sweet Irish voice and a carefree manner of tapping the piano keys, Morton has hypnotized those tuners who like romance with their listening.

Perhaps it's all because he's so madly in love. He's married to the dainty dancer, Barbara Bennett—Richard's daughter and Connie's sister—and still is sure she's the fairest creature in the world. Perhaps it's because he realizes how lucky a lad is Morton.

For a kind of crazy existence he has led. His parents lived in Brooklyn, but twenty-nine years ago Mrs. Downey was visiting in Wallingford, Conn., and there he was born. He's sold phonographs, peddled insurance, worked on a railroad as monitor of a donkey engine, and as a news butcher on trains. In 1923, chance and not much else led him up the gangplank to the *Leviathan* for her trial voyage as a United States liner and, when he sang, a gathering of newspaper men and millionaires applauded. Among these was Albert D. Lasker, then chairman of the Shipping Board, who aided the round-faced kid of twenty-two.

At the height of Whiteman's popularity, Downey appeared as a soloist and subsequently starred in many night clubs, including the Cafe de Paris in London, the Club Casanova in Berlin, and now he is master of ceremonies in his own New York club, the Delmonico, and is featured on the Paramount-Publix Program.

Morton doesn't drink, very seldom smokes, but is very fond of ice cream. This passion for sweets is tragic, for a double chin'll get him if he doesn't watch out.

UNITED STATES BROADCASTING STATIONS

Call Letters	TRANSMITTER LOCATION	Power Watts	Kilo-cycles	Dial Setting	Kilocycle Index
WIBG	Elkins Park, Pa.	50	930		1060 KC WBAL Baltimore, Md.
WIBM	Jackson, Mich. Shares with WJBK	100	1370		1060 KC WTIC Hartford, Conn.
WIBO	Chicago, Ill. Shares with WPCC- WISJ	1500	560		1060 KC WJAG Norfolk, Nebr.
WIBR	Steubenville, Ohio 3/5 time	50	1420		1060 KC KWJJ Portland, Oreg.
WIBU	Poynette, Wis.	100	1210		1070 KC WTAM Cleveland, Ohio
WIBW	Topeka, Kans. Shares with KSAC	1000	580		1070 KC WCAZ Carthage, Ill.
WIBX	Utica, N. Y.	300	1200		1070 KC WDC Tuscola, Ill.
WICC	Bridgeport, Conn.	500	1190		1070 KC KJBS San Francisco, Calif.
WIL	St. Louis, Mo. Shares with KFWF	250	1200		1080 KC WBT Charlotte, N. C.
WILL	Urbana, Ill. Shares with KFNF-KUSD	500	890		1080 KC WCBQ Zion, Ill.
WILM	Wilmington, Del.	100	1420		1080 KC WMBI Chicago, Ill.
WIOD WMBF	Miami, Fla.	1000	1300		1090 KC KMOX St. Louis, Mo.
WIP	Philadelphia, Pa. Shares with WFAN	500	610		1100 KC WPG Atlantic City, N. J.
WIS	Columbia, S. C.	1000	1010		1100 KC WLWL New York, N. Y.
WISJ	(See WIAB)				1100 KC KGDM Stockton, Calif.
WISN	Milwaukee, Wis. Shares with WHAD	250	1120		1110 KC WRVA Richmond, Va.
WJAC	Johnstown, Pa. Shares with WFBG	100	1310		1110 KC KSOO Sioux Falls, S. Dak.
WJAG	Norfolk, Nebr.	1000	1060		1120 KC WDEL Wilmington, Del.
WJAK	Marion, Ind. Shares with WLBC	50	1310		1120 KC WDBO Orlando, Fla.
WJAR	Providence, R. I.	400	850		1120 KC WTAW College Station, Tex.
WJAS	Pittsburgh, Pa.	2500	1290		1120 KC KTRH Houston, Tex.
WJAX	Jacksonville, Fla.	1000	900		1120 KC WISN Milwaukee, Wis.
WJAY	Cleveland, Ohio	500	610		1120 KC WHAD Milwaukee, Wis.
WJAZ	Mt. Prospect, Ill. Shares with WCKY- WCHI	5000	1490		

RCA Radiotrons are your best insurance against tube troubles

JESSICA DRAGONETTE



THE funny part of it is, Jessica Dragonette is her real name. Five years she has sung in radio—as the Coca Cola Girl, the Philco Prima Donna, and now the Cities Service Star—yet she's still in her early 20's. She refuses with a pert nod of her head to say exactly how old she is, but you can wager she can't claim twenty-five years.

Her hair is golden, her eyes are hazel, and she smiles with the wistfulness of a fragile doll. She is one of the very few women stars whom broadcasting has created.

In Calcutta, India, she was born, and this perhaps accounts for her deep faith in mysticism, her uncanny ability to tell your fortune with cards. She was educated in a convent near New York, and her biggest thrill came once on her birthday when she was taken to Broadway to witness a play. Back home again, she re-acted every scene for her playmates.

Having been graduated from the convent, she came to New York, and this time looked to the stage as a means of expressing her own self. She performed the only solo part in Morris Gest's spectacle, "The Miracle," and later played in "The Grand Street Follies." In "The Student Prince," she sang the leading role of Kathie. Now she claims she'll never leave radio for either the stage or the movies.

She reads and answers every fan letter she receives, and explains: "People, you see, really are romantic." She earns one of the largest incomes in radio, yet she still lives in a modest one room apartment. She wears "misses" size dresses and writes poetry which she hides under the carpet or behind a picture just so it won't be published in biographies like this.

UNITED STATES BROADCASTING STATIONS

Call Letters	TRANSMITTER LOCATION	Power Watts	Kilo-cycles	Dial Setting	Kilocycle Index
WJBC	La Salle, Ill. Shares with WJBL	100	1200		1120 KC KFSG Los Angeles, Calif.
WJBI	Red Bank, N. J. Shares with WGBB- WCOH-WMRJ	100	1210		1120 KC KMPC Inglewood, Calif. 1120 KC KRSC Seattle, Wash.
WJBK	Highland Park, Mich. Shares with WIBM	50	1370		1120 KC KFIO Spokane, Wash.
WJBL	Decatur, Ill. Shares with WJBC	100	1200		1130 KC WOV New York City
WJBO	New Orleans, La.	100	1420		1130 KC WJJD Mooseheart, Ill.
WJBT WBBM	(See WBBM-WJBT)				1130 KC KSL Salt Lake City, Utah
WJBU	Lewisburg, Pa. Shares with WBAX	100	1210		1140 KC WAPI Birmingham, Ala.
WJBW	New Orleans, La. Shares with WABZ	30	1200		1140 KC KVOO Tulsa, Okla.
WJBY	Gadsden, Ala.	50	1210		1150 KC WHAM Rochester, N. Y.
WJDX	Jackson, Miss.	1000	1270		1160 KC WWVA Wheeling, W. Va.
WJJD	Mooseheart, Ill.	20000	1130		1160 KC WOWO Fort Wayne, Ind.
WJKS	Gary, Ind. Shares with WGES	1250	1360		1170 KC WCAU Philadelphia, Pa.
WJMS	Ironwood, Mich.	100	1420		1180 KC WDGY Minneapolis, Minn.
WJR	Detroit, Mich.	5000	750		1180 KC WHDI Minneapolis, Minn.
WJSV	Alexandria, Va.	10000	1460		1180 KC WMAZ Macon, Ga.
WJTL	Oglethorpe Univer- sity, Ga.	20	1370		1180 KC KEX Portland, Oreg.
WJW	Mansfield, Ohio.	100	1210		1180 KC KOB State College, N. Mex.
WJZ	New York City.	30000	760		1190 KC WICC Bridgeport, Conn.
WKAR	E. Lansing, Mich.	1000	1040		1190 KC WOAI San Antonio, Tex.
WKAJ	Laconia, N. H.	100	1310		1200 KC WABI Bangor, Me.
WKBB	Joliet, Ill. Shares with WCLS	100	1310		1200 KC WNBX Springfield, Vt.
WKBC	Birmingham, Ala.	100	1310		1200 KC WCAX Burlington, Vt.
WKBF	Indianapolis, Ind. Shares with WBAA- WCMA	500	1400		

Improve your radio reception with new RCA Radiotrons



SISTERS OF THE SKILLET

ALTHOUGH neither knows how to bake a cake or mix up a salad, Eddie East and Ralph Dumke, better known as the "Sisters of the Skillet" have been giving hints to housewives for some time over the radio. How to make self-turning pancakes or how to keep husbands from wearing holes in the toes of their socks and similar problems gain their attention. And since they signed a contract with the National Broadcasting Company radio audiences have been clamoring for their distinctive brand of humor.

Long before radio grew as popular as it is today, Eddie and Ralph were appearing in vaudeville houses throughout the country. Their vaudeville tours began in 1923 when their act was booked on a junior circuit out of Chicago for a week's trial. A six-year contract followed. They didn't take up broadcasting seriously until 1929, when they appeared on the Mississippi Flood Relief programs. Then, on a vaudeville tour they thought up a new radio stunt—the one they have now—consisting of gags and a few songs.

The Sisters of the Skillet tip the scales at slightly more than a quarter of a ton when standing side by side. Both are married and they'll tell you that they've found no household problem yet, even in their own homes, that they were unable to solve. Eddie prefers blondes and Ralph brunettes. Eddie was born in Bloomington, Ind., and Ralph in South Bend. How do they account for their radio success? The same motto that they employed while in vaudeville: See all, tell all, and know nothing!

UNITED STATES BROADCASTING STATIONS

Call Letters	TRANSMITTER LOCATION	Power Watts	Kilo-cycles	Dial Setting	Kilocycle Index
WKBH	La Crosse, Wis. Shares with KSO	1000	1380		1200 KC WORC. WEPB Worcester, Mass.
WKBI	Chicago, Ill. Shares with WHFC- WEHS	100	1420		1200 KC WIBX Utica, N. Y.
WKBN	Youngstown, Ohio. . . . Shares with WEAQ	500	570		1200 KC WFBE Cincinnati, Ohio
WKBO	Jersey City, N. J. Shares with WBMS- WNJ-WHOM	250	1450		1200 KC WBHS Huntsville, Ala.
WKBS	Galesburg, Ill.	100	1310		1200 KC WHBC Canton, Ohio
WKBV	Connersville, Ind.	150	1500		1200 KC WLAP Louisville, Ky.
WKBW	Buffalo, N. Y.	5000	1480		1200 KC WEHC Emory, Va.
WKBZ	Ludington, Mich.	50	1500		1200 KC WFAM La Porte, Ind.
WKJC	Lancaster, Pa. Shares with WCOD	100	1200		1200 KC WLBG Petersburg, Va.
WKRC	Cincinnati, Ohio.	1000	550		1200 KC WNBO Silver Haven, Pa.
WKY	Oklahoma City, Okla. . . .	1000	900		1200 KC WCOD Harrisburg, Pa.
WKZO	Berrien Springs, Mich. . . .	1000	590		1200 KC WKJC Lancaster, Pa.
WLAC	Nashville, Tenn.	5000	1470		1200 KC WNBW Carlisle, Pa.
WLAP	Louisville, Ky.	1250	1010		1200 KC KMLB Nimrod, La.
WLB WGMS	Minneapolis, Minn. Shares with WCAL- KFMX-WRHM	1000	1250		1200 KC WABZ New Orleans, La.
WLBC	Muncie, Ind. Shares with WJAK	50	1310		1200 KC WJBW New Orleans, La.
WLBF	Kansas City, Kans.	100	1420		1200 KC WBBZ Ponca City, Okla.
WLBG	Petersburg, Va.	250	1200		1200 KC WFBC Knoxville, Tenn.
WLBL	Stevens Pt., Wis.	2000	900		1200 KC WRBL Columbus, Ga.
WLBW	Oil City, Pa.	1000	1260		1200 KC KGHI Little Rock, Ark.
WLBX	Long Island City, N. Y. . . . Shares with WCLB- WWRL-WMBQ	100	1500		1200 KC KBTM Paragould, Ark.
WLBZ	Bangor, Me.	500	620		1200 KC WJBC La Salle, Ill.
WLCI	Ithaca, N. Y.	50	1210		
WLEY	Lexington, Mass. 1 1/2 time	250	1370		

RCA Radiotrons—the standard equipment in sets of leading manufacturers

JOHN B. KENNEDY



JOHN B. KENNEDY is the James M. Whistler of radio. He builds 'most every sentence of his Sunday night Collier's talks into an epigram, sometimes barbing

it with satire, always edging it with wit. He observes, for instance: "There are two kinds of actors—hams and egos. The egos think they're good. The hams know they're good."

Let's suppose we're chatting with him in the red lacquer Japanese lounge of the NBC Times Square Studio after Collier's has signed off. Professor Lucifer G. Butts has rolled up his night shirt costume, the Love Story Girl has gone out into a world of reality, and Uncle Henry and Mr. Editor are picking up the pages of their script. John Kennedy runs the fingers of his left hand through his inky hair, his black eyes piercing you, his prominent nose aimed like a spear. And he begins to talk:

"Born in Quebec, Canada, January 16, 1894, studied in St. Louis University; fired from the St. Louis Post-Dispatch in 1912. This began a series of firings which included the Chicago Journal and New York Evening World. Faced the microphone first at WBZ in Springfield, Mass., on July 29, 1924, and forgot every line. That's why I insist that every Collier's speaker have his speech written out."

When John Kennedy came to Collier's as associate editor in 1924, the job of preparing a radio program was wished on him, and he's been rattling out those epigrams ever since. He has a rich memory, and in this red lacquer room he tells about the time he "ran copy" for William Jennings Bryan during a political convention. Bryan wandered into a room occupied by newspapermen, threw himself on the bed and commented on "the crusade against liquor being a hard task."

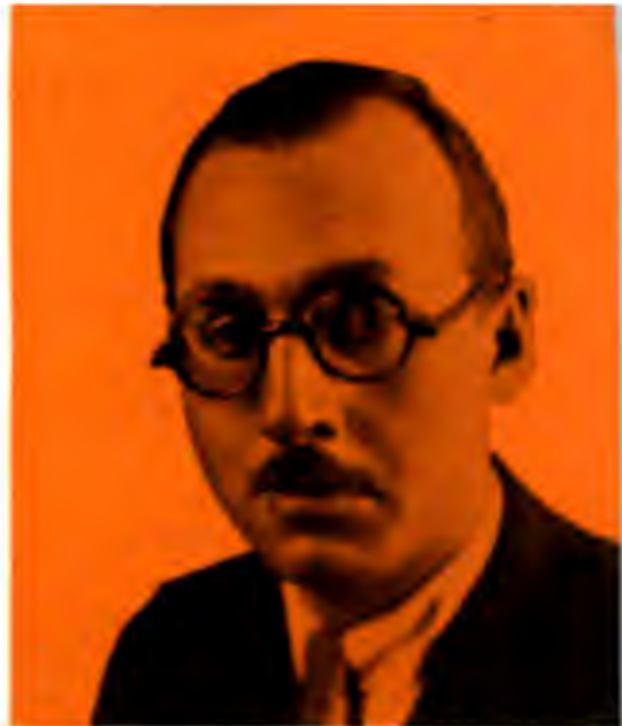
"He didn't know that the pillow, on which his head rested, covered a quart of champagne someone had given me," Kennedy chuckled.

UNITED STATES BROADCASTING STATIONS

Call Letters	TRANSMITTER LOCATION	Power Watts	Kilo-cycles	Dial Setting	Kilocycle Index
WLIB } WGN }	(See WGN-WLIB)				1200 KC WJBL Decatur, Ill.
WLIT	Philadelphia, Pa. Shares with WFI	500	560		1200 KC WWAE Hammond, Ill.
WLOE	Boston, Mass. 3/4 time	250	1500		1200 KC KFJB Marshalltown, Iowa
WLS	Chicago, Ill. Shares with WENR- WBCN	5000	870		1200 KC KGCU Mandan, N. Dak.
WLSI } WDWF }	(See WDWF-WLSI)				1200 KC WCAT Rapid City, S. Dak.
WLTH	Brooklyn, N. Y. Shares with WCGU- WFOX-WBBC	500	1400		1200 KC KGFY Huron, S. Dak.
WLVA	Lynchburg, Va. Shares with WBTM	100	1370		1200 KC KFWF St. Louis, Mo.
WLW	Cincinnati, Ohio.	50000	700		1200 KC KGDE Fergus Falls, Minn.
WLWL	New York City Shares with WPG	5000	1100		1200 KC WCLO Jameville, Wis.
WMAC } WSYR }	(See WSYR-WMAC)				1200 KC WHBY Green Bay, Wis.
WMAK	Buffalo, N. Y.	1000	1040		1200 KC WIL St. Louis, Mo.
WMAL	Washington, D. C.	500	630		1200 KC KGFJ Los Angeles, Calif.
WMAQ	Chicago, Ill.	5000	670		1200 KC KSMR Santa Maria, Calif.
WMAZ	Macon, Ga. Shares with WGST	500	1180		1200 KC KWG Stockton, Calif.
WMBA	Newport, R. I.	100	1500		1200 KC KGEK Yuma, Colo.
WMBC	Detroit, Mich.	250	1420		1200 KC KGEW Fort Morgan, Colo.
WMBD	Peoria Heights, Ill. Shares with WTAD	1000	1440		1200 KC KVOS Bellingham, Wash.
WMBF } WIOD }	(See WIOD-WMBF)				1200 KC KGY Lacey, Wash.
WMBG	Richmond, Va. Shares with WBBL	100	1210		1210 KC WMRJ Jamaica, N. Y.
WMBH	Joplin, Mo.	250	1420		1210 KC WJBI Redbank, N. J.
WMBI	Chicago, Ill. Shares with WCBD	5000	1080		1210 KC WGBB Freeport, N. Y.
					1210 KC WCOH Yonkers, N. Y.
					1210 KC WOCL Jamestown, N. Y.

RCA Radiotrons are "the heart of your radio"

RAYMOND KNIGHT



YOU'VE heard "Station KuKu," NBC's outstanding "nut" program, but did you ever stop to picture the man who writes and directs it? He also plays the rôle of Ambrose J. Weems, chief announcer of the station. Raymond Knight is his name and if you saw him the first thing you'd notice would be his resemblance to a penguin. He's tall, solemn, and the roundness of his eyes is emphasized by horn-rimmed glasses. He's an inch and a half over six feet and has one blue eye and one gray eye. Dignity is the word you'd think of immediately on seeing him for the first time—unless you knew him "off-stage." But while he is responsible for some of the most hilarious moments on the air he is capable of producing some of the most exquisitely beautiful programs, too. Remember the radio adaptation of Oscar Wilde's "The Nightingale and the Rose"? That was adapted, directed and produced by Knight.

He was once stage manager in the famous "47 Workshop" of Professor George Pierce Baker at Harvard. When Baker transferred to Yale he went with him to complete his studies under the same guidance. In 1927 he won the Drama League's national playwriting contest for the best one-act play—"Strings"—later presented by NBC.

He was the author of "See America First" produced in 1928. This led to his engagement by NBC as a director and writer of feature presentations and continuity.

Knight carries a tin whistle with which he signals taxis—and occasionally ties up traffic as a result. He often spends hours—even days—figuring out practical jokes to spring on his friends. Children are fond of him and his first successful radio presentation was one with a child cast, "The Gold Spot Pals." He collects walking sticks and always carries one. Yes, he's married.

UNITED STATES BROADCASTING STATIONS

Call Letters	TRANSMITTER LOCATION	Power Watts	Kilo-cycles	Dial Setting	Kilocycle Index
WMBJ	Wilkinsburg, Pa.	100	1500		1210 KC WLC Ithaca, N. Y.
WMBO	Auburn, N. Y.	100	1310		1210 KC WPAW Pawtucket, R. I.
WMBQ	Brooklyn, N. Y. Shares with WCLB- WWRL-WLPX	100	1500		1210 KC WDFW- WLSI Providence, R. I.
WMBR	Tampa, Fla.	100	1370		1210 KC WSEN Columbus, Ohio
WMC	Memphis, Tenn.	1000	780		1210 KC WJW Mansfield, Ohio
WMCA	New York City. Shares with WNYC	500	570		1210 KC WALR Zanesville, Ohio
WMMN	Fairmont, W. Va.	500	890		1210 KC WBAX Wilkes-Barre, Pa.
WMPC	Lapeer, Mich.	100	1500		1210 KC WJBU Lewisburg, Pa.
WMRJ	Jamaica, N. Y. Shares with WGBB- WJBI-WCOH	100	1210		1210 KC WBBJ Richmond, Va.
WMSG	New York City. Shares with WBNX- WCDA-WAWZ	250	1350		1210 KC WMBG Richmond, Va.
WMT	Waterloo, Iowa.	500	600		1210 KC WSIX Springfield, Tenn.
WNAC } WBIS }	Boston, Mass.	1000	1230		1210 KC WSOC Gastonia, N. C.
WNAD	Norman, Okla. Shares with KGGF	500	1010		1210 KC WJBY Gadsden, Ala.
WNAX	Yankton, S. D.	1000	570		1210 KC WQDX Thomasville, Ga.
WNBF	Binghamton, N. Y. ...	100	1500		1210 KC KGMP Elk City, Okla.
WNBH	New Bedford, Mass. .	100	1310		1210 KC WRBQ Greenville, Miss.
WNBO	Silver Haven, Pa. Shares with WHBC Sundays	100	1200		1210 KC WGCM Gulfport, Miss.
WNBR	Memphis, Tenn. Shares with WGBC	500	1430		1210 KC KWEA Shreveport, La.
WNBW	Carbondale, Pa.	10	1200		1210 KC KDLR Devils Lake, N. Dak.
WNBX	Springfield, Vt. Shares with WCAX	10	1200		1210 KC KGCR Watertown, S. Dak.
WNBZ	Saranac Lake, N. Y. ...	50	1290		1210 KC KFOR Lincoln, Nebr.
WNJ	Newark, N. J. Shares with WBMS- WHOM-WKBO	250	1450		1210 KC WHBU Anderson, Ind.
WNOX	Knoxville, Tenn.	2000	560		

To maintain high quality performance in your radio set—use RCA Radiotrons

GUY LOMBARDO



OUT of Chicago, in the fall of 1929, came Guy Lombardo with his ten-piece orchestra. Playing soft, sweet, simple melody under the colored lights of the Roosevelt Hotel Grill, he soon captured Manhattan's fickle fancy. It became the smart thing for the younger generation to gather 'round Lombardo, and for those beyond the Hudson, with many a romantic sigh, to tune him in.

Lombardo is the most popular of the young orchestra leaders to gain national prominence in the last year or so. He directs a thoroughly harmonious band; and this because the very same boys who organized it, still face the microphone together. Four of the ten lads are Lombardo brothers: Guy, Carmen, Leibert, and Victor, the latter being only 20.

Eleven years ago in London, Ont., they joined together as kids in the London Collegiate Institute. It was their interest in this orchestra and their consequent disinterest in books that caused them to part prematurely from school. Traveling a vaudeville circuit, they landed one day in Cleveland, Ohio, and, though still youngsters on the under side of 20, they accepted a supper club offer. In Cleveland they played for four years, attaining an unprecedented peak of popularity through broadcasting. They moved to Chicago, and for four years spun tunes at the Granada Cafe—now Paul Whiteman's nook. It was here that they first broadcast commercially—for Wrigley and for Florsheim Shoes. Somewhat timidly they agreed to try their melodies on exacting Manhattan. But in a few months, they had signed with Robert Burns and Radio Follies, contracts which net them \$150,000 a year.

Guy is dark, olive-skinned, a boyish appearing fellow with heavy eyebrows and a sunny way of smiling.

UNITED STATES BROADCASTING STATIONS

Call Letters	TRANSMITTER LOCATION	Power Watts	Kilo-cycles	Dial Setting	Kilocycle Index
WNYC	New York City Shares with WMCA	500	570		1210 KC KFVS Cape Girardeau, Mo.
WOAI	San Antonio, Tex.	50000	1190		1210 KC WEBQ Harrisburg, Ill.
WOAN WREC	(See WREC-WOAN)				1210 KC KGNO Dodge City, Kans.
WOAX	Trenton, N. J. Shares with WCAM-WCAP	500	1280		1210 KC WSBC Chicago, Ill.
WOBT	Union City, Tenn.	250	1310		1210 KC WCRW Chicago, Ill.
WOBU	Charleston, W. Va. Shares with WSAZ	250	580		1210 KC WEDC Chicago, Ill.
WOC	Davenport, Iowa Shares with WHO	5000	1000		1210 KC WCBS Springfield, Ill.
WOCL	Jamestown, N. Y.	25	1210		1210 KC WTAX Springfield, Ill.
WODA	Paterson, N. J. Shares with WGCP-WAAM	1000	1250		1210 KC WHBF Rock Island, Ill.
WODX	Mobile, Ala. Shares with WSFA	500	1410		1210 KC WOMT Manitowoc, Wis.
WOI	Ames, Iowa.	5000	640		1210 KC WIBU Plympton, Wis.
WOKO	Albany, N. Y. Shares with WHEC- WABO	500	1440		1210 KC KMJ Fresno, Calif.
WOL	Washington, D. C. ...	100	1310		1210 KC KFXM San Bernardino, Calif.
WOMT	Manitowoc, Wis.	100	1210		1210 KC KPPC Pasadena, Calif.
WOOD	Grand Rapids, Mich. ... Shares with WASH	500	1270		1210 KC KDFN Casper, Wyo.
WOPI	Bristol, Tenn.	100	1500		1220 KC WCAD Canton, N. Y.
WOQ	Kansas City, Mo. Shares with KFH	1000	1300		1220 KC WCAE Pittsburgh, Pa.
WOR	Newark, N. J.	5000	710		1220 KC WDAE Tampa, Fla.
WORC WEPS	Worcester, Mass.	100	1200		1220 KC WREN Lawrence, Kans.
WOS	Jefferson City, Mo. Shares with WGBF- KFRU	500	630		1220 KC KFKU Lawrence, Kans.
WOV	New York City To 6 P.M.	1000	1130		1220 KC KTW Seattle, Wash.
WOW	Omaha, Nebr. Shares with WCAJ	1000	590		1230 KC KWSC Pullman, Wash.
					1230 KC WNAC- WBIS Boston, Mass.

RCA Radiotrons set the standard for all radio tubes

OLIVE PALMER

READ these routine facts before plunging into the colorful story of Miss Palmer—nightingale of the Palmolive Hour:



Born in Louisville, Ky., at a date which she simply refuses to divulge. Began singing at the Fourth Avenue Methodist Church in that city. Her mother was a singer and her father was an accomplished pianist. She was educated at Drake University.

While down in Louisville, Miss Palmer heard that W. W. Henshaw, a nationally known impresario, was planning to revive twenty operas in New York. She decided to ask for a job. So she called New York by long distance telephone. No, Henshaw didn't think he was interested. He had to have all the roles assigned long before she could possibly reach Manhattan. It was too late for an audition. She persuaded him to listen to her over the long distance telephone. Well, she was paying for it, wasn't she? She sang the "Bell Song" from "Dinorah." And Henshaw hired her.

After appearing in these opera revivals, Miss Palmer toured Europe and made phonograph records. By this time, radio had become an important factor in the musical world. Perhaps if her voice spun along the wire, she thought, it might also strike a microphone melodiously. A single audition was sufficient to satisfy Palmolive.

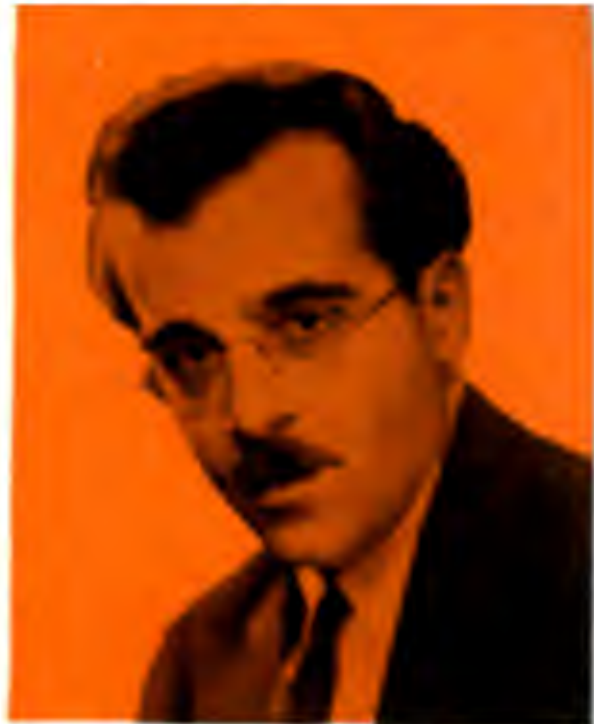
Miss Palmer has brown hair and blue eyes. She smiles faintly when you congratulate her after a performance. Then she hurries away to her home in Jackson Heights, N. Y., where she lives with her parents and brother. She sings with her left hand cupped over her ear so she can hear herself. Try it yourself some time.

UNITED STATES BROADCASTING STATIONS

Call Letters	TRANSMITTER LOCATION	Power Watts	Kilo-cycles	Dial Setting	Kilocycle Index
WOWO	Ft. Wayne, Ind. Shares with WWVA	10000	1160		1230 KC WPSC State College, Pa.
WPAD	Paducah, Ky.	100	1420		1230 KC WSBT South Bend, Ind.
WPAP WQAO	(See WQAO-WPAP)				1230 KC WFBM Indianapolis, Ind.
WPAW	Pawtucket, R. I. Shares with WDFW- WLSI	100	1210		1230 KC KGGM Albuquerque, N. Mex.
WPCC	Chicago, Ill. Shares with WIBO WISJ	500	560		1230 KC KYA San Francisco, Calif.
WPCH	New York City.	500	810		1230 KC KFQD Anchorage, Alaska
WPEN	Philadelphia, Pa.	250	1500		1240 KC WXYZ Detroit, Mich.
WPG	Atlantic City, N. J. Shares with WLWL	5000	1100		1240 KC KTAT Fort Worth, Tex.
WPOE	Patchogue, N. Y.	100	1370		1240 KC WACO Waco, Tex.
WPOR WTAR	(See WTAR-WPOR)				1250 KC WGCP Newark, N. J.
WPSC	State College, Pa.	500	1230		1250 KC WODA Paterson, N. J.
WPTF	Raleigh, N. C.	1000	680		1250 KC WAAM Newark, N. J.
WQAM	Miami, Fla.	1000	560		1250 KC WDSU New Orleans, La.
WQAN	Scranton, Pa. Shares with WGRJ	250	880		1250 KC WLB- WGMS Minneapolis, Minn.
WQAO WPAP	New York City. Shares with WHN- WRNY	250	1010		1250 KC WRHM Minneapolis, Minn.
WQBC	Vicksburg, Miss.	300	1300		1250 KC KFMX Northfield, Minn.
WQDM	St. Albans, Vt.	5	1370		1250 KC WCAL Northfield, Minn.
WQDX	Thomasville, Ga.	50	1210		1250 KC KFOX Long Beach, Calif.
WRAK	Williamsport, Pa.	50	1370		1250 KC KIDO Bosc, Idaho
WRAM	Wilmington, N. C.	100	1370		1260 KC WLBW Oil City, Pa.
WRAW	Reading, Pa. Shares with WGAL	50	1310		1260 KC KWVG Brownsville, Tex.
WRAX	Philadelphia, Pa.	250	1020		
WRBJ	Hattiesburg, Miss.	10	1370		
WRBL	Columbus, Ga.	50	1200		
WRBQ	Greenville, Miss.	250	1210		

There's an RCA Radiotron for every purpose

ERNO RAPEE



JET-BLACK hair, thin, slightly greater than medium height, brown eyes peering through rimless glasses—this is your picture of the General Musical Director of the National Broadcasting Co., the conductor of many important symphonic programs. Erno Rapee has the zeal of a beaver and the habits of an owl, for his radio work requires him to work late every night. His penchant for novel musical arrangements often keeps him over the score sheet until the damp gray of early morning.

Rapee was born in Budapest in 1891 and was first known as a pianist. He appeared in this capacity with many orchestras in his home town, Berlin and Vienna. After a tour of South America and Mexico, Rapee came to New York where he first played piano in an East-side restaurant. After a period as director of the Hungarian Opera Co., he was appointed conductor of the Rialto Theatre orchestra and as such met S. L. Rothafel, better known as Roxy.

This association was not broken except for brief spans until Roxy shifted to RKO and Rapee joined the NBC. With the opening of the Roxy Theatre in 1927 he became musical director of the scintillating playhouse. It was his Sunday afternoon concerts, during which he introduced much new American music, that lifted him into radio fame and made him sought after by such sponsors as Palmolive, General Motors, Mobiloil and the like.

He once flirted with the movies, actually signing a three-year contract with Warner Brothers. But he was back in New York radio life within a year and says he will devote all his energies hereafter to broadcasting.

Rapee invariably is called upon for a few words at radio parties. He admits that he gives a terrible talk. Maybe this is because always before he puts on his soup-and-fish he reads an after-dinner-speaker's handbook for gags.

UNITED STATES BROADCASTING STATIONS

Call Letters	TRANSMITTER LOCATION	Power Watts	Kilo-cycles	Dial Setting	Kilocycle Index
WRBX	Roanoke, Va. 3/4 time	250	1410		1260 KC WTOG Savannah, Ga.
WRC	Washington, D. C. . . .	500	950		1260 KC KRGV Harlingen, Tex.
WRDO	Augusta, Me.	100	1370		1260 KC KOIL Council Bluffs, Iowa
WRDW	Augusta, Ga.	100	1500		1260 KC KVOA Tucson, Ariz.
WREC WOAN	Memphis, Tenn.	1000	600		1270 KC WEAJ Ithaca, N. Y.
WREN	Lawrence, Kans. Shares with KFKU	1000	1220		1270 KC WFBR Baltimore, Md.
WRHM	Minneapolis, Minn. . . . Shares with WCAL- KFMX-WLB	1000	1250		1270 KC WASH Grand Rapids, Mich.
WRJN	Racine, Wis.	100	1370		1270 KC WOOD Grand Rapids, Mich.
WRNY	New York City Shares with WQAO- WPAP-WHN	250	1010		1270 KC WJDX Jackson, Miss.
WROL	Knoxville, Tenn.	100	1310		1270 KC KWLC Decorah, Iowa
WRR	Dallas, Tex.	500	1280		1270 KC KGCA Decorah, Iowa
WRUF	Gainesville, Fla.	5000	830		1270 KC KOL Seattle, Wash.
WRVA	Richmond, Va.	5000	1110		1270 KC KVOR Colorado Springs, Colo.
WSAI	Cincinnati, Ohio.	500	1330		1280 KC WCAM Camden, N. J.
WSAJ	Grove City, Pa.	100	1310		1280 KC WCAP Asbury Park, N. J.
WSAN	Allentown, Pa. Shares with WCBA	250	1440		1280 KC WOAX Trenton, N. J.
WSAR	Fall River, Mass.	250	1450		1280 KC WDDO Chattanooga, Tenn.
WSAZ	Huntington, W. Va. . . . Shares with WOBV	250	580		1280 KC WRR Dallas, Tex.
WSB	Atlanta, Ga.	5000	740		1280 KC WIBA- WISJ Madison, Wis.
WSBC	Chicago, Ill. Shares with WEDC- WCRW	100	1210		1280 KC KFBB Great Falls, Mont.
WSBT	South Bend, Ind. Shares with WFBM	500	1230		1290 KC WNBZ Saratoga Lake, N. Y.
WSEN	Columbus, Ohio.	100	1210		1290 KC WJAS Pittsburgh, Pa.
WSFA	Montgomery, Ala. Shares with WODX	500	1410		

For better radio reception—use RCA Radiotrons

SAMUEL LIONEL ROTHAFEL



FOR nearly ten years you have heard Roxy's voice on the air—that faltering, meandering, but always deeply appealing voice. For Roxy was probably the first important showman to realize that radio broadcasting one day was to become a vital entertainment factor and that, instead of clashing with the legitimate theatre, it would progress on a parallel course. In 1922 he organized "Roxy's Gang" at the Capitol Theatre—a gang of amiable song birds and exuberant instrumentalists—and immediately this became one of the most popular features on the air. This season Roxy led his Gang on an RKO tour, and soon he will become one of the showmen in that vast Rockefeller project—Radio City.

Thus, Sammy Rothafel will pass another milestone in his uphill travel through life. Sammy, you are reminded, was born in Stillwater, Minn., on July 9, 1882. When twelve years of age, his parents moved to New York where he started his career as a cash boy in a department store. As a book agent, a Marine, a coal miner in Pennsylvania, Roxy had intimate contact with many phases of life before he presented his first moving picture in 1907 at Forest City, Pa.—in a vacant storeroom. In 1913, he returned to New York where, as manager of the Regent Theatre, his originality and sure knowledge of what the people want, attracted attention. In turn, he managed the Strand, then the world's largest theatre, the Rialto and Rivoli, before his own playhouse, the Roxy Theatre, was opened.

Roxy is a generous, sentimental person. He chanced into the Walter Reed Hospital at Washington one day and supplied all patients with receiving sets. He has dreams of great power. Before him always stands a bust of Napoleon.

UNITED STATES BROADCASTING STATIONS

Call Letters	TRANSMITTER LOCATION	Power Watts	Kilo-cycles	Dial Setting	Kilocycle Index
WSIX	Springfield, Tenn.....	100	1210		1290 KC K TSA San Antonio, Tex.
WSJS	Winston-Salem, N. C.	100	1310		1290 KC KFUL Galveston, Tex.
WSM	Nashville, Tenn.....	5000	650		1290 KC KLCN Blytheville, Ark.
WSMB	New Orleans, La.....	500	1320		1290 KC WEBC Superior, Wis.
WSMK	Dayton, Ohio..... Shares with KOV	200	1380		1290 KC KDYL Salt Lake City, Utah.
WSOC	Gastonia, N. C.....	100	1210		1300 KC WBBR Brooklyn, N. Y.
WSPA	Spartanburg, S. C.....	250	1420		1300 KC WHAP New York, N. Y.
WSPD	Toledo, Ohio.....	1000	1340		1300 KC WEVD New York, N. Y.
WSUI	Iowa City, Iowa..... 3/7 time	500	880		1300 KC WHAZ Troy, N. Y.
WSUN WFLA	(See WFLA-WSUN)				1300 KC WIOD- WMBF
WSVS	Buffalo, N. Y.....	50	1370		1300 KC KFH Wichita, Kans.
WSYB	Rutland, Vt.....	100	1500		1300 KC KFAC Los Angeles, Calif.
WSYR WMAC	Syracuse, N. Y.....	250	570		1300 KC WQQ Kansas City, Mo.
WTAD	Quincy, Ill..... Shares with WMBD	500	1440		1300 KC KGEF Los Angeles, Calif.
WTAG	Worcester, Mass.....	250	580		1300 KC KFJR Portland, Oreg.
WTAM	Cleveland, Ohio.....	50000	1079		1300 KC KTBR Portland, Oreg.
WTAQ	Eau Claire, Wis..... Shares with KSCJ	1000	1330		1310 KC WKAV Laconia, N. H.
WTAR WPOR	Norfolk, Va.....	500	780		1310 KC WEBK Buffalo, N. Y.
WTAW	College Station, Tex..... Shares with KTRH	500	1120		1310 KC WMBO Auburn, N. Y.
WTAX	Springfield, Ill..... Shares with WCBS	100	1210		1310 KC WNBH New Bedford, Mass.
WTBO	Cumberland, Md.....	250	1420		1310 KC WOL Washington, D. C.
WTEL	Philadelphia, Pa..... Shares with WHAT	50	1310		1310 KC WGH Newport News, Va.
WTFI	Toccoa, Ga.....	500	1450		1310 KC WEXL Royal Oak, Mich.
WTIC	Hartford, Conn..... Shares with WBAL	50000	1060		1310 KC WFDF Flint, Mich.
WTMJ	Milwaukee, Wis.....	2500	620		

RCA Radiotrons—the preference of radio experts

How to Get the Most from Your Radio

- 1 Have your antenna installed by a competent service man.
- 2 Use a good ground. A cold water pipe makes the best ground. Solder the lead to it or use a standard ground clamp. If you cannot use a cold water pipe, a sheet of copper, approximately three feet square, buried in moist ground makes an excellent one. Hot water or steam radiator pipes usually will give satisfactory results.
- 3 Place the set so that the antenna and ground leads are as short as possible. If the lead-in comes through the window, place the set near the window, not on the other side of the room.
- 4 A shielded lead-in will sometimes eliminate objectionable noises.



Felt pads under a set will often aid in minimizing unpleasant noises

- 5 See that all connections are tightly made.
- 6 Allow several inches clearance between the back of the set and the wall.



If something goes wrong with your set, call in a trained service man

- 7 If possible, make the set face a doorway or drapes of some kind.
- 8 Place the set in an adjoining room. This will often make the tone more lifelike and pleasing.
- 9 More pleasing tone quality can often be obtained by insulating the set from the bare floor with small felt pads.
- 10 Sometimes reversing the plug on an a.c. set will improve reception and reduce noise. Never reverse the plug on a d.c. set.
- 11 Static and electrical disturbances can be reduced by turning the tone control to the extreme bass position.

- 12 Do not attempt to make adjustments on your set unless you are thoroughly competent to do so. The skill of a good service man is available at a reasonable cost.
- 13 If your set employs batteries, see that they are always up to the required voltages. Worn-out batteries cause noise, reduced volume, and lack of sensitivity.
- 14 If your set uses a storage battery, see that distilled water is added at regular intervals so that the liquid never falls below the top of the plates.
- 15 Do not play the set too loudly. It is less disturbing to the neighbors and you get more life-like reproduction.
- 16 Install a complete set of new RCA Radiotrons at least once each year.



It is a simple matter to renew your tubes. A set of new RCA Radiotrons will improve your present reception.

RCA Radiotrons

There is an RCA Radiotron for every purpose.
 When you buy radio tubes, look for the
Red and Black Carton

WD-11,	Detector Amplifier.....
WX-12,	Detector Amplifier.....
UX-112A,	Amplifier Detector.....
UX-120,	Amplifier.....
UX-171A,	Amplifier.....
UV-109,	Detector Amplifier.....
UX-109,	Detector Amplifier.....
UX-200A,	Detector.....
UX-201A,	Detector Amplifier.....
UX-210,	Power Amplifier.....
UX-222,	Screen-Grid Radio Frequency Amplifier..
UY-224,	Screen-Grid Radio Frequency Amplifier (A.C. Heater).....
UY-224A,	Screen-Grid Radio Frequency Amplifier (A.C. Quick Heater).....
UX-226,	Amplifier (A.C. Filament).....
UY-227,	Detector Amplifier (A.C. Heater).....
RCA-230,	Detector Amplifier.....
RCA-231,	Power Amplifier.....
RCA-232,	Radio Frequency Amplifier.....
RCA-233,	Power Amplifier Pentode D.C.....
RCA-235,	Super-Control Screen-Grid Amp.....
RCA-236,	Screen-Grid Radio Frequency Amp. (D.C. Heater).....
RCA-237,	Detector Amplifier (D.C. Heater).....
RCA-238,	Power Amplifier Pentode (D.C. Heater)..
UX-240,	Hi Mu Amplifier Detector.....
UX-245,	Power Amplifier (A.C. Filament).....
RCA-247,	Power Amplifier Pentode (A.C. Filament)
UX-250,	Power Amplifier (A.C. Filament).....
UX-280,	Full-Wave Rectifier.....
UX-281,	Half-Wave Rectifier.....
UX-852,	Oscillator or R.F. Power Amp.....
UX-865,	Screen-Grid R.F. Power Amp., Oscillator
UX-866,	Half-Wave Rectifier.....
UX-874,	Voltage Regulator.....
UV-876,	Ballast Tube.....
UV-886,	Ballast Tube.....



SANDERSON AND CRUMIT

"DUNROVIN" they've named their home near Springfield, Mass. And there you have the whole radio story of these two old troupers—"no more roamin' around the country and playing to empty houses and packin' and unpackin'." They've got themselves a quiet little place, three and one-half hours' drive from New York.

Seems strange, too, for Julia Sanderson, standing there on a low platform before the microphone, and Frank Crumit, waving his left hand gently in rhythm, once were so much a part of the whirl of theatrical life. She was the toast of the town and he, the wit. The older folks will remember her clear blue eyes and her golden hair, in the days of "Winsome Willie" when she stepped out of the chorus into success in: "The Dairy Maid," "The Girl from Utah," "The Canary," "Fantana" and "The Sunshine Girl."

In "Tangerine," Julia joined with Frank Crumit—who had been graduated from the University of Ohio as an electrical engineer but who had turned to vaudeville. They made an immediate hit in this and subsequently in: "No, No, Nanette," "Queen High" and "Okay." In July, 1927, they were married.

As she dreams in her home, Miss Sanderson sometimes recalls how the Harvard boys used to send her their sweaters with the flamboyant "H's", and the night President Taft tossed a bouquet across the footlights to her.

UNITED STATES BROADCASTING STATIONS

Call Letters	TRANSMITTER LOCATION	Power Watts	Kilo-cycles	Dial Setting	Kilocycle Index
WTNT	Nashville, Tenn.	5000	1470		1310 KC WFDV
WTOC	Savannah, Ga.	500	1260		Rome, Ga. 1310 KC WHAT
WWAE	Hammond Ind. Shares with WRAF	100	1200		Philadelphia, Pa. 1310 KC WTEL
WWJ	Detroit, Mich.	1000	920		Philadelphia, Pa. 1310 KC WJAC
WWL	New Orleans, La. Shares with KWKH	5000	850		Johnstown, Pa. 1310 KC WFBG
WWNC	Asheville, N. C.	1000	570		Altoona, Pa. 1310 KC WRAW
WWRL	Woodside, N. Y. Shares with WMBQ- WLBX-WCLB	100	1500		Reading, Pa. 1310 KC WGAL
WWSW	Pittsburgh, Pa.	100	1500		Lancaster, Pa. 1310 KC WSAJ
WWVA	Wheeling, W Va. Shares with WOWO	5000	1160		Grove City, Pa. 1310 KC WBRF
WXYZ	Detroit, Mich.	1000	1240		Wilkes-Barre, Pa. 1310 KC WK3C
KABC	San Antonio, Texas	100	1420		Birmingham, Ala. 1310 KC WBEO
KBPS	Portland, Ore. Shares with KXL	100	1420		Marquette, Mich. 1310 KC WOBT
KBTM	Paragould, Ark.	100	1200		Union City, Tenn. 1310 KC WROL
KCRC	Enid, Okla. Shares with KGFG	250	1370		Knoxville, Tenn. 1310 KC KRMD
KCRJ	Jerome, Ariz.	100	1310		Shreveport, La. 1310 KC KTSL
KDB	Santa Barbara, Cal.	100	1500		Shreveport, La. 1310 KC WSJS
KDFN	Casper, Wyo.	100	1210		Winston-Salem, N. C. 1310 KC KTLC
KDKA	Pittsburgh, Pa.	50000	980		Houston, Tex. 1310 KC KFPM
KDLR	Devils Lake, N. D.	100	1210		Greenville, Tex. 1310 KC KTSM
KDYL	Salt Lake City, Utah. . . .	1000	1290		El Paso, Tex. 1310 KC WDAH
KECA	Los Angeles, Cal.	1000	1430		El Paso, Tex. 1310 KC KFPL
KELW	Burbank, Cal. Shares with KTM	500	780		Dublin, Tex. 1310 KC KFXR
KEX	Portland, Ore. Shares with KOB	5000	1180		Oklahoma City, Okla. 1310 KC WKBS
KFAB	Lincoln, Nebr. Shares with WBBM- WJBT	5000	770		Galesburg, Ill. 1310 KC WCLS
					Joliet, Ill. 1310 KC WKBB

*When experts agree on RCA Radiotrons—why
take chances?*

NATHANIEL SHILKRET



NEXT time you hear an orchestra directed by Nathaniel Shilkret, remember this description of him: He is scarcely over five feet tall; has a mild manner when chatting with you and a tiger's attitude when he's conducting; speaks in a high-pitched voice and is a veritable dynamo of enthusiasm. Many's the night he's toiled tirelessly till dawn over a difficult musical arrangement, perhaps an original composition.

Shilkret was born in New York, but lived in Vienna from the age of 2 to 4½ years. From his father he drew his inspiration to become a musician. Frequently his father would play twenty hours a day, perfecting himself on every known instrument.

While still a boy, Nathaniel was brought back to America and he played in the New York Boys' Symphony. A lot of these lads now hold leading posts with famous symphony orchestras. Still in his 'teens, Nathaniel played with the Russian Symphony Orchestra and later with the New York Philharmonic. At 19, he wrote an original suite, "Street Sketches," with a "Negro Dance" which many believe anticipated the original Dixieland Jazz Band's negroid rhythms.

For many years he has been chief orchestra director in the Victor Recording Studios. At one time he was making records in thirty-five languages, using thirty types of orchestras and turning out eighty or ninety numbers a month. In radio, he's directed RCA-Victor, Eveready, Eastman Kodak, Mobiloil, and other special programs. When the crowds of musicians with their huge bass viols and tubas gather in the corridor outside a studio, he sometimes gets lost.

UNITED STATES BROADCASTING STATIONS

Call Letters	TRANSMITTER LOCATION	Power Watts	Kilo-cycles	Dial Setting	Kilocycle Index
KFAC	Los Angeles, Cal. . . .	1000	1300		1310 KC KWCR
KFBB	Great Falls, Mont. . . .	2500	1280		Cedar Rapids, Iowa 1310 KC KFJY
KFBK	Sacramento, Cal.	100	1310		Fort Dodge, Iowa 1310 KC KFGQ
KFBL	Everett, Wash. Shares with KVL	50	1370		Boone, Iowa 1310 KC KGFV
KFDM	Beaumont, Tex.	1000	560		Ravenna, Nebr. 1310 KC WBOW
KFDY	Brookings, S. Dak. Shares with KFVR	1000	550		Terre Haute, Ind. 1310 KC WJAK
KFEL	Denver, Colo. Shares with KFXF	500	920		Marion, Ind. 1310 KC WLBC
KFEQ	St. Joseph, Mo.	2500	680		Muncie, Ind. 1310 KC KGBX
KFGQ	Boone, Iowa Shares with KWCR- KFJY	100	1310		St. Joseph, Mo. 1310 KC KFBK
KFH	Wichita, Kans. Shares with WOQ	1000	1300		Sacramento, Cal. 1310 KC KCRJ
KFI	Los Angeles, Cal.	50000	640		Jerome, Ariz. 1310 KC KGCX
KFIO	Spokane, Wash.	100	1120		Wolf Point, Mont. 1310 KC KGEZ
KFIZ	Fond du Lac, Wis.	100	1420		Kalispell, Mont. 1310 KC KFUP
KFJB	Marshalltown, Iowa 15 time	250	1200		Denver, Colo. 1310 KC KFXJ
KFJF	Oklahoma City, Okla.	5000	1480		Fidgewater, Colo. 1310 KC KMED
KFJI	Astoria, Ore.	100	1370		Medford, Oreg. 1310 KC KXRO
KFJM	Grand Forks, N. Dak.	100	1370		Aberdeen, Wash. 1310 KC KIT
KFJR	Portland, Ore. Shares with KTBR	500	1300		Yakima, Wash. 1320 KC WADC
KFJY	Fort Dodge, Iowa. Shares with KFGQ- KWCR	100	1310		Tallmadge, Ohio 1320 KC WSMB
KFJZ	Fort Worth, Tex.	100	1370		New Orleans, La. 1320 KC KTFI
KFKA	Greeley, Colo. Shares with KPOF	1000	880		Twin Falls, Idaho 1320 KC KID
KFKB	Milford, Kans.	5000	1050		Idaho Falls, Idaho 1320 KC KGHF
KFKU	Lawrence, Kans. Shares with WREN	500	1220		Pueblo, Colo. 1320 KC KGIQ
KFKX KYW	(See KQY-KFKX)				Twin Falls, Idaho 1330 KC WDRC
					Hartford, Conn. 1330 KC WSAI
					Cincinnati, Ohio

*Progress in the radio art is measured by the
development of RCA Radiotrons*

KATE SMITH



NO FEMININE radio entertainer ever bounced into radio popularity more suddenly than Kate Smith, songbird for La Palina. Her professional career covers only six years, dating back to 1925 when she sang at a benefit at the B. F. Keith Theatre in Washington, D. C. Eddie Dowling was in the audience and promptly engaged her for his show, "Honeymoon Lane." When that show closed she was signed for a rôle in "Hit the Deck" and after that her riotous singing and buxom dancing was an outstanding hit in George White's "Flying High."

During the run of the latter production radio attracted her attention. She thrust the charm of her stage presence into her first audition and the NBC signed her on a sustaining basis. She shifted to the Columbia Broadcasting System and immediately launched herself into a tremendously successful broadcasting career. It was her "memory" songs—songs that revived for listeners recollections of happy days—that caught on particularly. Hundreds of requests fill her mail box daily. Yes, and she reads and answers all her fan mail, claiming that this intimate touch with her audience is her chief inspiration.

Kate's fat all right. She weighs 237 pounds, but doesn't mind being kidded about it. For Kate would rather enjoy the delights of charlotte russe and potato salad than to diet and be slender. She's blonde, blue-eyed and wears no make-up on the street. Wants to become a licensed airplane pilot and swimming's her favorite sport.

Her theme song, "When the Moon Comes Over the Mountain," for which she was co-lyricist with Howard Johnson, is her most prized possession. Recently she completed an eleven-week engagement at the Palace Theatre, New York, an all-time record.

UNITED STATES BROADCASTING STATIONS

Call Letters	TRANSMITTER LOCATION	Power Watts	Kilo-cycles	Dial Setting	Kilobcycle Index
KFLV	Rockford, Ill. Shares with WHBL	500	1410		1330 KC WTAQ Eau Claire, Wis.
KFLX	Galveston, Tex.	100	1370		1330 KC KSCJ Sioux City, Iowa
KFMX	Northfield, Minn. Shares with WCAL- WRHM-WLB	1000	1250		1330 KC KGB San Diego, Calif.
KFNF	Shenandoah, Iowa Shares with WILL- KUSD	1000	890		1340 KC WSPD Toledo, Ohio
KFOR	Lincoln, Nebr.	250	1210		1340 KC KFPW Fort Smith, Ark.
KFOX	Long Beach, Cal.	1000	1250		1340 KC WCOA Pensacola, Fla.
KFPL	Dublin, Tex.	100	1310		1340 KC KFPY Spokane, Wash.
KFPM	Greenville, Tex.	15	1310		1350 KC WAWZ Zarephath, N. J.
KFPW	Ft. Smith, Ark.	50	1340		1350 KC WMSG New York, N. Y.
KFPY	Spokane, Wash.	1000	1340		1350 KC WCDA New York, N. Y.
KFQU	Holy City, Cal. Shares with KGGC	100	1420		1350 KC WBNX New York, N. Y.
KFQW	Seattle, Wash.	100	1420		1350 KC KWK St. Louis, Mo.
KFRC	San Francisco, Cal.	1000	610		1360 KC WFBL Syracuse, N. Y.
KFRU	Columbia, Mo. Shares with WOS- WGBF	500	630		1360 KC WQBC Vicksburg, Miss.
KFSD	San Diego, Cal.	1000	600		1360 KC WCSC Charleston, S. C.
KFSG	Los Angeles, Cal. Shares with KMCS	500	1120		1360 KC WJKS Gary, Ind.
KFUL	Galveston, Tex. Shares with KTSA	500	1290		1360 KC WGES Chicago, Ill.
KFUO	Clayton, Mo. Shares with KSD	1000	550		1360 KC KGIR Butte, Mont.
KFUP	Denver, Colo. Shares with KFXJ	100	1310		1360 KC KGER Long Beach, Calif.
KFVD	Culver City, Cal.	250	1000		1370 KC WRDO Augusta, Me.
KFVS	Cape Girardeau, Mo. Shares with WEPO	100	1210		1370 KC WQDM St. Albans, Vt.
KFWB	Hollywood, Cal.	1000	950		1370 KC WLEY Lexington, Mass.
KFWF	St. Louis, Mo. Shares with WIL	100	1200		1370 KC WSVS Buffalo, N. Y.
					1370 KC WBGF Glens Falls, N. Y.
					1370 KC WPOE Patchogue, N. Y.

Every RCA Radiotron is thoroughly tested before it is enclosed in the Red and Black carton



JOLLY BILL AND JANE

NEXT October, Jane will be 14 years old. But already she's a little star in her own little way. Jane, whose real name is Muriel Harbater, is the essence of childish gaiety and carefree simplicity.

And she came into radio, not by accident, but as a result of her own sparkling talent. Jolly Bill—Mr. William Steinke on his calling card, if he should have one—had grown tired of working with a grown-up person who tried to imitate the pattering of a child. This was three years ago, and Bill—born in the Pennsylvania Dutch section, a cartoonist and ex-newspaperman—already was the radio uncle of New York. So Miss Madge Tucker, who has charge of the young antics at the NBC, told Bill to take his pick from all the eager faces circled 'round her. Bill chose Jane, and they have not missed a day together ever since he first pointed his finger at her.

Bill is as round as a medicine ball, has a laugh as infectious as the grippe and, when he talks, you can hear him from Times Square to the Battery. He hasn't lost an ounce of his 210 pounds, despite his early morning broadcasts. You see, he has to rise shortly before 6 o'clock, meet Jane in the studios, long about 7:15, and go over the script of their Cream of Wheat mythical travelogue before taking to the air at 7:45. They repeat this broadcast for western listeners an hour later, and then Jane dashes off for school.

UNITED STATES BROADCASTING STATIONS

Call Letters	TRANSMITTER LOCATION	Power Watts	Kilo-cycles	Dial Setting	Kilocycle Index
KFWI	San Francisco, Cal. Shares with KROW	500	930		1370 KC WCBM Baltimore, Md.
KFXD	Nampa, Idaho	50	1420		1370 KC WBTM Danville, Va.
KFXF	Denver, Colo. Shares with KFEL	500	920		1370 KC WLVA Lynchburg, Va.
KFXJ	Edgewater, Colo. Shares with KFUP	50	1310		1370 KC WHBD Mount Orab, Ohio
KFXM	San Bernardino, Cal. Shares with KPPC	100	1210		1370 KC WHDF Calumet, Mich.
KFXR	Oklahoma City, Okla.	250	1310		1370 KC WJBK Highland Park, Mich.
KFXY	Flagstaff, Ariz.	100	1420		1370 KC WIBM Jackson, Mich.
KFYO	Abilene, Tex.	250	1420		1370 KC WRAC Williamsport, Pa.
KFYR	Bismarck, N. D. Shares with KFDY	2500	550		1370 KC WELK Philadelphia, Pa.
KGA	Spokane, Wash.	5000	1470		1370 KC WRBJ Harrisburg, Minn.
KGAR	Tucson, Ariz.	250	1370		1370 KC WHBQ Memphis, Tenn.
KGB	San Diego, Cal.	500	1330		1370 KC KOH Reno, Nev.
KGBX	St. Joseph, Mo.	100	1310		1370 KC KGFG
KGBZ	York, Nebr. Shares with KMA	1000	930		1370 KC KCRC Enid, Okla.
KGCA	Decorah, Iowa Shares with KWLC	50	1270		1370 KC WMBR Tampa, Fla.
KGCR	Watertown, S. Dak.	100	1210		1370 KC KMAC San Antonio, Tex.
KGCU	Mandan, N. Dak.	100	1200		1370 KC KFJZ Fort Worth, Tex.
KGCC	Wolf Point, Mont. by time	250	1310		1370 KC KONO San Antonio, Tex.
KGDA	Mitchell, S. Dak.	100	1370		1370 KC KGKL San Angelo, Tex.
KGDE	Fergus Falls, Minn.	250	1200		1370 KC KFLX Galveston, Tex.
KGDM	Stockton, Cal.	250	1100		1370 KC WGL Fort Wayne, Ind.
KGDY	Huron, S. Dak.	100	1200		1370 KC KGDA Mitchell, S. Dak.
KGEF	Los Angeles, Cal. Shares with KTBI	1000	1300		1370 KC KFJM Great Forks, N. Dak.
KGEK	Yuma, Colo. Shares with KGEW	50	1200		1370 KC KWKC Kansas City, Mo.
KGER	Long Beach, Cal. Shares with KPSN	1000	1360		1370 KC WRAM Wilmington, N. C.

RCA Radiotrons are the heart of your radio set



TASTYEAST JESTERS

AT THE start of a party, it's always best to introduce the folks all around. So, meet the Tastyeast Jesters—you know, those musical lads who tune up and smart-crack thrice a week, just about the time of coffee and pie. Here's Dwight B. Latham, who was born in New Britain, Conn., on May 24, 1903. And Wamp Carlson, the Swede, who came to light in the same town on October 24, 1901. And Guy Bonham, Forty Fort, Pa., on November 24, 1904. Funny that they were all born on the 24th, isn't it?

Well, Dwight and Wamp met up in high school and sang together in the quartet. Wamp at that time was a bass; now, of course, he can't plunge lower than second tenor.

But music didn't pay the lads much in those days and so to Hartford, Conn., and into the insurance business they went. It was here that they chanced on Guy Bonham. Guy had spent one year at the University of Pennsylvania, barnstormed with Graham Prince and his Carolinians, playing the trumpet, and finally had drifted into a department store job in Hartford. The boys found that their voices blended, and so did a number of civic clubs.

They pattered around with radio at station WBZ, Springfield, Mass., picking up a dollar here and there, till finally on January 3, 1930, Tastyeast signed them for a local broadcast. From then on, they have been on the up and up.

UNITED STATES BROADCASTING STATIONS

Call Letters	TRANSMITTER LOCATION	Power Watts	Kilo-cycles	Dial Setting	Kilohertz Index
KGEW	Fort Morgan, Colo. Shares with KGEK	100	1200		1370 KC WRJN Racine, Wis.
KGEZ	Kalispell, Mont.	100	1310		1370 KC KGAR Tucson, Ariz.
KGFF	Alva, Okla.	100	1420		1370 KC KRE Berkeley, Calif.
KGFG	Oklahoma City, Okla. Shares with KCRC	100	1370		1370 KC WJTL Oglethorpe Univ., Ga.
KGFI	Corpus Christi, Tex.	250	1500		1370 KC KOOS Marshfield, Oreg.
KGfJ	Los Angeles, Cal.	100	1200		1370 KC KFBL Everett, Wash.
KGfK	Moorehead, Minn.	50	1500		1370 KC KVL Seattle, Wash.
KGfL	Raton, N. M.	50	1370		1370 KC KFJI Astoria, Oreg.
KGfW	Ravenna, Nebr.	100	1310		1370 KC KGfL Raton, N. Mex.
KGfX	Pierre, S. Dak.	200	580		1370 KC KUJ Walla Walla, Wash.
KGGC	San Francisco, Cal. Shares with KFQU	100	1420		1380 KC WSMK Dayton, Ohio
KGGF	South Coffeyville, Okla. Shares with WNAD	500	1010		1380 KC KQV Pittsburgh, Pa.
KGGM	Albuquerque, N. M.	500	1230		1380 KC KSO Clarinda, Iowa
KGfH	Pueblo, Colo.	500	1320		1380 KC WKBI La Crosse, Wis.
KGfI	Little Rock, Ark.	100	1200		1390 KC WHK Cleveland, Ohio
KGfL	Billings, Mont.	1000	950		1390 KC KLRA Little Rock, Ark.
KGfQ	Twin Falls, Idaho		1320		1390 KC KUOA Fayetteville, Ark.
KGfR	Butte, Mont. <i>3/4 time</i>	500	1360		1390 KC KOT Phoenix, Ariz.
KGfW	Trinidad, Colo.	100	1420		1400 KC WCGU Brooklyn, N. Y.
KGfX	Las Vegas, Nev.	100	1420		1400 KC WFOX Brooklyn, N. Y.
KGfZ	Grant City, Mo.	50	1500		1400 KC WLTH Brooklyn, N. Y.
KGfJ	Little Rock, Ark.	250	890		1400 KC WBBC Brooklyn, N. Y.
KGKB	Brownwood, Tex.	100	1500		1400 KC KOCW Chickasha, Okla.
KGKL	San Angelo, Tex.	100	1370		1400 KC WCMA Culver, Ind.
KGKO	Wichita Falls, Tex.	500	570		1400 KC WKBF Indianapolis, Ind.
KGKX	Sandpoint, Idaho	100	1420		
KGKY	Scottsbluff, Nebr.	100	1500		
KGMP	Elk City, Okla.	100	1210		
KGfN	North Platte, Nebr.	500	1430		

RCA Radiotrons—The hallmark of a good radio set

LOWELL THOMAS



THEY tell you 'round about the studios that this microphone life has grown a trifle tame for Lowell Thomas. He's got the itch, they say, to be off again to the far places—to the mysterious East, to the scented islands on the other side of the world. For, after all, it's pretty hard to coop within the four monk's-cloth walls of a studio, a man who's followed the trail of Colonel Lawrence about Arabia and Count Luckner's eccentric sea tracks.

Thomas and Floyd Gibbons, whom he succeeded as the voice of the *Literary Digest*, are radio's far travelers—the air's great adventurers. They've been everywhere that everyday folk dream someday, somehow, they, too, will go, and each night Thomas explains the day's news in the light of his rich reminiscences.

It's in keeping with his character that Thomas, born in a tiny Ohio town, was reared in Cripple Creek, Colo., scene of a rich gold strike and center of pioneer history in the rough and ready days of the old West. He studied successively at the University of Northern Indiana, at a Chicago law college, at the University of Denver, and at Princeton. His life is so full that it's best within the limits of this brief tale to compress the most significant events: Worked on Chicago newspapers, taught English at Princeton, was sent by President Wilson to prepare a historical record of the World War, was with all of the Allied Armies from the North Sea to the Persian Gulf, toured the world with the Prince of Wales' party, and explored Burma, Malaya and Central Asia.

Thomas is a slender, wiry, nervous person, with flashing black eyes, a distinctive mustache and a hypnotic manner of talking. He says he is the man whom radio fans tune in before listening to Amos 'n' Andy.

UNITED STATES BROADCASTING STATIONS

Call Letters	TRANSMITTER LOCATION	Power Watts	Kilo cycles	Dial Setting	Kilocycle Index
KGNO	Dodge City, Kansas	100	1210	1400 KC	WBAA
KGO	San Francisco, Cal.	7500	790	1400 KC	West Lafayette, Ind KLO
KGRS	Amarillo, Tex. Shares with WDAG	1000	1410	Ogden, Utah 1410 KC	WRBX
KGVO	Missoula, Mont.	100	1420	Roanoke, Va. 1410 KC	WBCM
KGW	Portland, Ore.	1000	620	Bay City, Mich. 1410 KC	WHIS
KGY	Lacey, Wash.	10	1200	Blacksfield, W. Va. 1410 KC	KGRS
KHJ	Los Angeles, Cal.	1000	900	Amarillo, Tex. 1410 KC	WAAB
KHQ	Spokane, Wash.	2000	590	Quincy, Mass. 1410 KC	WDAG
KICK	Red Oak, Iowa	100	1420	Amarillo, Tex. 1410 KC	WODX
KID	Idaho Falls, Idaho Shares with KTFI	500	1320	Mobile, Ala. 1410 KC	WSFA
KIDO	Boise, Idaho	1000	1250	Montgomery, Ala. 1410 KC	KFLV
KIT	Yakima, Wash.	50	1310	Rockford, Ill. 1410 KC	WHBL
KJBS	San Francisco, Cal.	100	1070	Sheboygan, Wis. 1420 KC	WHDL
KJR	Seattle, Wash.	5000	970	Tupper Lake, N. Y. 1420 KC	WTBO
KLCN	Blytheville, Ark.	50	1290	Cumberland, Md. 1420 KC	WILM
KLO	Ogden, Utah	500	1400	Wilmington, Del. 1420 KC	WPAD
KLPM	Minot, N. Dak.	100	1420	Padsuch, Ky. 1420 KC	WEDH
KLRA	Little Rock, Ark. Shares with KUOA	1000	1350	Eric, Pa. 1420 KC	WMBC
KLS	Oakland, Cal.	250	1440	Detroit, Mich. 1420 KC	WELL
KLX	Oakland, Cal.	500	880	Battle Creek, Mich. 1420 KC	WIBR
KLZ	Denver, Colo.	1000	560	Strohsville, Ohio 1420 KC	WFDW
KMA	Shenandoah, Iowa Shares with KGBZ	1000	930	Tallahassee, Fla. 1420 KC	WJBO
KMAC	San Antonio, Tex. Shares with KONO	100	1370	New Orleans, La. 1420 KC	WAGM
KMBC	Kansas City, Mo.	1000	950	Mars Hill, Me. 1420 KC	KGFF
KMCS	Inglewood, Cal. Shares with KFSG	500	1120	Alva, Okla. 1420 KC	KXYZ
KMED	Medford, Ore.	100	1310	Houston, Tex.	
KMJ	Fresno, Cal.	100	1210		
KMLB	Monroe, La.	50	1200		
KMMJ	Clay Center, Nebr.	1000	740		

To get the best from your set use RCA Radiotrons

RUDY VALLEE



NO SINGLE radio figure ever has aroused quite the storm of comment that has surrounded Rudy Vallee since he rocketed to national fame three years ago. To many he is the romantic vagabond lover, the most appealing voice on the air. Through oft-times embarrassing adoration and frequent bitter criticism, Vallee has plodded on, undiscouraged, to unequalled acclaim. He has become an idol at less than 30.

And Rudy, no more exactly than anyone else, can explain this phenomenon. It's one of those events which, like a miracle, come unheralded in the entertainment world.

Four years ago he left Yale and his Westbrook, Me., home for New York. His father was proprietor of the town's drug store and Rudy worked as an usher in the local movie house. He had studied saxophone by means of a correspondence school course with Rudy Wiedoeft, still a master of this instrument. From Wiedoeft he borrowed his first name, for "Hubert" he was christened.

In January, 1928, he sang in a New York night club and, after making the rounds of the broadcasting studios, he finally landed a job with the Herbert Entertainers on WMCA at \$25 a program. His peculiar manner of singing, his intimate way of introducing his music, his moody, distant bearing, attracted nation-wide attention. Shortly thereafter, the National Broadcasting Co. offered him an exclusive contract. Now he sings weekly for Fleischmann and religiously eats yeast. He has become a millionaire. His recent marriage has failed to lessen the appeal of his light wavy hair and the break in his voice for feminine listeners.

UNITED STATES BROADCASTING STATIONS

Call Letters	TRANSMITTER LOCATION	Power Watts	Kilo-cycles	Dial Setting	Kilocycle Index
KMO	Tacoma, Wash.	500	860		1420 KC KFYO Abilene, Tex.
KMOX	St. Louis, Mo.	50000	1090		1420 KC WSPA Spartanburg, S. C.
KMPC	Beverly Hills, Cal.	500	710		1420 KC KABC San Antonio, Tex.
KMTR	Los Angeles, Cal.	500	570		1420 KC KICK Bel Oak, Iowa
KNX	Hollywood, Cal.	5000	1050		1420 KC WIAS Ottumwa, Iowa
KOA	Denver, Colo.	12500	830		1420 KC WLBF Kansas City, Kans.
KOAC	Corvallis, Ore.	1000	550		1420 KC WMBH Joplin, Mo.
KOB	State College, N. Mex. Shares with KEX	20000	1180		1420 KC KLPM Minot, N. Dak.
KOCW	Chickasha, Okla.	500	1400		1420 KC WEHS Evanston, Ill.
KOH	Reno, Nev.	500	1370		1420 KC WHFC Cairo, Ill.
KOIL	Council Bluffs, Iowa	1000	1260		1420 KC WJMS Ironwood, Mich.
KOIN	Portland, Oregon.	1000	940		1420 KC WKBI Chicago, Ill.
KOL	Seattle, Wash. Shares with KTW	1000	1270		1420 KC KFIZ Fond du Lac, Wis.
KOMO	Seattle, Wash.	1000	920		1420 KC KFXV Flagstaff, Ariz.
KONO	San Antonio, Tex. Shares with KMAC	100	1370		1420 KC KGIX Las Vegas, Nev.
KOOS	Marshfield, Ore.	100	1370		1420 KC KGVO Missoula, Mont.
KORE	Eugene, Ore.	100	1420		1420 KC KFQU Holy City, Calif.
KOY	Phoenix, Ariz.	500	1390		1420 KC KFXD Nampa, Idaho
KPCB	Seattle, Wash.	100	650		1420 KC KGIW Trinidad, Colo.
KPJM	Prescott, Ariz.	100	1500		1420 KC KGKX Sandpoint, Idaho
KPO	San Francisco, Cal.	5000	680		1420 KC KGGC San Francisco, Calif.
KPOF	Denver, Colo. Shares with KFKA	500	880		1420 KC KXL Portland, Oreg.
KPPC	Pasadena, Cal. Shares with KFXM	50	1210		1420 KC KBPS Portland, Oreg.
KPQ	Wenatchee, Wash.	50	1500		1420 KC KORE Eugene, Oreg.
KPRC	Houston, Tex.	2500	920		1420 KC WDEV Waterbury, Vt.
KQV	Pittsburgh, Pa. Shares with WSMK	500	1380		
KQW	San Jose, Cal.	500	1010		
KRE	Berkeley, Cal. Shares with KZM	100	1370		

RCA Radiotrons—the choice of millions

PAUL WHITEMAN



A MAN of many contradictions is this "King of Jazz"—Paul Whiteman. He weighs 225 pounds and looks as if he could swing a sledge hammer, but he's scared to death of crowds. He loves to speed 75 miles an hour in his high-powered roadster, but he refuses to ride in elevators. He drinks quarts of water, but he has to be dragged on a ferryboat. He eats huge dinners, but he's always worried about his health.

He was born in Denver, Colo., and started work as a taxi driver. His father was director of the Methodist church choir, and from him he learned the elements of conducting. Migrating to California, he started dance orchestras in San Francisco and Los Angeles. In the latter city he met Ferdie Grofe who became his arranger and contributed all those glorious special orchestrations that have made the Whiteman band renowned.

Out of the West, Whiteman and his band came to the Ambassador Hotel in Atlantic City in 1919 and immediately fascinated the East with their fiery music. In New York he opened at the old Palais Royal and, within a few weeks, swept the town off its feet. In this restaurant was conceived the famous jazz concert at Aeolian Hall which, more than any other single event, cinched Whiteman for history. He introduced George Gershwin's "Rhapsody in Blue," the famous melody which he uses as his radio signature.

In radio, Whiteman made his debut with Old Gold through a Columbia Broadcasting System network. He starred in one talkie, "The King of Jazz." Now he's playing at the Granada Cafe in Chicago, and broadcasting commercially as the Whiteman Paintmen through a National Broadcasting Co. network.

UNITED STATES BROADCASTING STATIONS

Call Letters	TRANSMITTER LOCATION	Power Watts	Kilo-cycles	Dial Setting	Kilocycle Index
KREG	Santa Ana, Cal.	100	1500		1420 KC KFQW
KRGV	Harlingen, Tex. Shares with KWWG	500	1260		Seattle, Wash. 1430 KC WHP
KRLD	Dallas, Tex. Shares with KTHS	10000	1040		Harrisburg, Pa. 1430 KC WBAK
KRMD	Shreveport, La. Shares with KTSL	50	1310		Harrisburg, Pa. 1430 KC WCAH
KROW	Oakland, Calif. Shares with KFWI	1000	930		Columbus, Ohio 1430 KC WFEA
KRSC	Seattle, Wash.	50	1120		Manchester, N. H. 1430 KC WGBC
KSAC	Manhattan, Kans. Shares with WIBW	1000	580		Memphis, Tenn. 1430 KC WNBR
KSCJ	Sioux City, Iowa Shares with WTAQ	2500	1330		Memphis, Tenn. 1430 KC KGNF
KSD	St. Louis, Mo. Shares with KFUD	500	550		North Platte, Neb. 1430 KC KECA
KSEI	Pocatello, Idaho	250	900		Los Angeles, Calif. 1440 KC WHEC- WABO
KSL	Salt Lake City, Utah	5000	1130		Rochester, N. Y. 1440 KC WOKO
KSMR	Santa Maria, Cal.	100	1200		Albany, N. Y. 1440 KC WCBA
KSO	Clarinda, Iowa Shares with WKBI	500	1380		Allentown, Pa. 1440 KC WSAW
KSOO	Sioux Falls, S. Dak.	2000	1110		Allentown, Pa. 1440 KC WBIG
KSTP	St. Paul, Minn.	10000	1460		Greensboro, N. C. 1440 KC WTAD
KTAB	San Francisco, Cal.	1000	560		Quincy, Ill. 1440 KC WMBD
KTAR	Phoenix, Ariz.	1000	620		Peoria Heights, Ill. 1440 KC KLS
KTAT	Ft. Worth, Tex. Shares with WACO	1000	1240		Oakland, Calif. 1450 KC WBMS
KTBR	Portland, Ore. Shares with KFJR	500	1300		Hackensack, N. J. 1450 KC WNJ
KTBS	Shreveport, La.	1000	1450		Newark, N. J. 1450 KC WHOM
KTFI	Twin Falls, Idaho	250	1320		Jersey City, N. J. 1450 KC WKBO
KTHS	Hot Springs Nat'l Park, Ark. Shares with KRLD	10000	1040		Jersey City, N. J. 1450 KC WSAR
KTLC	Houston, Tex.	100	1310		Fall River, Mass. 1450 KC WGAR
KTM	Los Angeles, Cal. Shares with KELW	1000	780		Cleveland, Ohio 1450 KC WTFI
					Toccoa, Ga.

The standard of the radio industry—RCA Radiotrons

TONY WONS



NO, HE'S not an old gray-beard, that radio philosopher whose intimate "Are yuh lis'nin?" has introduced his home-spun philosophy and poetry on the air for something like seven years. Tony Wons is a sprightly fellow of 39 who lives with his wife and 10-year-old daughter on the shores of a wooded lake near New York City. He started his radio career in Cincinnati, presenting "The Merchant of Venice" on the air and taking each of the eight rôles himself. But you probably know him better for "Tony's Scrap-book"—or the bits of it you hear on the Camel Quarter Hour. The "Scrap-book" was begun when he lay wounded in a French hospital during the World War. It has been added to ever since.

The decidedly human musings that weave in and out of his programs on the air are extemporaneous. They've been built-up from a colorful life. Glance at his background: childhood spent around the lakes and woods of Wisconsin; youth tending furnaces in Milwaukee, punching cattle on an Arizona ranch, and clerking in a grocery store in Valparaiso, Ind. And then the War.

His radio work took him from Cincinnati to Chicago and then to New York at the invitation of the Columbia Broadcasting System. And although he has read more than a hundred thousand poems he has written only one, of four lines, that is characteristic of him:

"All men rate the same with me,
The wise, the fool, the slave, the free;
For no man on this earth does know
What made him thus, another so."

In private life, he's much the same as on the air. He likes the simple things of life. His greatest happiness comes from receiving fan mail from the blind. And he's still nervous when he faces the microphone.

UNITED STATES BROADCASTING STATIONS

Call Letters	TRANSMITTER LOCATION	Power Watts	Kilo-cycles	Dial Setting	Kilocycle Index
KTRH	Houston, Tex. Shares with WTAW	500	1120		1450 KC KTBS Shreveport, La.
KTSA	San Antonio, Tex. Shares with KFUL	2000	1290		1460 KC WJSV Alexandria, Va.
KTSL	Shreveport, La. Shares with KRMD	100	1310		1460 KC KSTP St. Paul, Minn.
KTSM	El Paso, Tex. Shares with WDAH	100	1310		1470 KC WLAC Nashville, Tenn.
KTW	Seattle, Wash. Shares with KOL	1000	1220		1470 KC WTNT Nashville, Tenn.
KUJ	Walla Walla, Wash. 1/2 time	100	1370		1470 KC KGA Spokane, Wash.
KUOA	Fayetteville, Ark. Shares with KLRA	1000	1390		1480 KC WKBW Buffalo, N. Y.
KUSD	Vermilion, S. Dak. Shares with KFNF- WILL	750	890		1480 KC KFJF Oklahoma City, Okla.
KUT	Austin, Tex.	100	1500		1490 KC WCKY Covington, Ky.
KVI	Tacoma, Wash.	1000	760		1490 KC WJAZ Mt. Prospect, Ill.
KVL	Seattle, Wash. Shares with KFBL	100	1370		1490 KC WCHI Chicago, Ill.
KVOA	Tucson, Ariz.	500	1260		1500 KC WMBA Newport, R. I.
KVOO	Tulsa, Okla. Shares with WAPI	5000	1140		1500 KC WLOE Boston, Mass.
KVOR	Colorado Springs, Col.	1000	1270		1500 KC WBNF Binghamton, N. Y.
KVOS	Bellingham, Wash.	100	1200		1500 KC WMBQ Brooklyn, N. Y.
KWCR	Cedar Rapids, Iowa. Shares with KFJY- KFGQ	100	1310		1500 KC WMBJ Wilkesburg, Pa.
KWEA	Shreveport, La.	100	1210		1500 KC WCLB Brooklyn, N. Y.
KWG	Stockton, Cal.	100	1200		1500 KC WLBT L'g Island City, N. Y.
KWJJ	Portland, Ore.	500	1060		1500 KC WRRL Woodside, N. Y.
KWK	St. Louis, Mo.	1000	1350		1500 KC WSYB Rutland, Vt.
KWKC	Kansas City, Mo. 1/2 time	100	1370		1500 KC WKBZ Ludington, Mich.
					1500 KC WMPC Lapeer, Mich.
					1500 KC WPEN Philadelphia, Pa.
					1500 KC WOPI Bristol, Tenn.
					1500 KC WDIX Tupelo, Miss.
					1500 KC WRDW Augusta, Ga.

No set is better than us tubes—use RCA Radiotrons

UNITED STATES BROADCASTING STATIONS

Call Letters	TRANSMITTER LOCATION	Power Watts	Kilo-cycles	Dial Setting	Kilocycle Index
KWKH	Shreveport, La. Shares with WWL	10000	850		1500 KC KGFI Corpus Christi, Tex.
KWLC	Decorah, Iowa Shares with KGCA	100	1270		1500 KC KUT Austin, Tex.
KWSC	Pullman, Wash.	2000	1220		1500 KC KGKB Brownwood, Tex.
KWWG	Brownsville, Tex. Shares with KRGV	500	1260		1500 KC KGIZ Grant City, Mo.
KXA	Seattle, Wash.	500	570		1500 KC KGKY Scottsbluff, Nebr.
KXL	Portland, Ore. Shares with KBPS	100	1420		1500 KC WKBY Cammerville, Ind.
KXO	El Centro, Cal.	100	1500		1500 KC KGFK Morrowhead, Minn.
KXRO	Aberdeen, Wash.	75	1310		1500 KC KPJM Prescott, Ariz.
KXYZ	Houston, Tex.	100	1420		1500 KC KXO El Centro, Calif.
KYA	San Francisco, Cal. . . .	1000	1230		1500 KC KDB Santa Barbara, Calif.
KYW KFKX	Chicago, Ill.	10000	1020		1500 KC KREG Santa Ana, Calif.
					1500 KC KPQ Wenatchee, Wash.
					1500 KC WWSW Pittsburgh, Pa.

Play safe! Always keep on hand an extra set of RCA Radiotrons

CANADIAN BROADCASTING STATIONS

Call Letters	TRANSMITTER LOCATION	Power Watts	Kilo-cycles	Dial Setting	Kilocycle Index
CFAC	Calgary, Alta.	500	690		540 KC
CFBO	St. John, N. B.	500	890		CKX
CFCA	Toronto, Ont.	500	840		580 KC
CFCF	Montreal, Que.	500	1030		CHMA
CFCH	North Bay, Ontario	50	1200		CKCL
CFCN	Calgary, Alta.	500	690		CKNC
CFCO	Chatham, Ontario	100	1210		CKUA
CFCT	Victoria, B. C.	500	630		600 KC
CFCY	St. Charlottetown, P. E. I.	250	960		CJRM
CFJC	Kamloops, B. C.	100	1120		CJRW
CFLC	Prescott, Ont.	50	1010		CNRO
CFNB	Fredericton, N. B.	500	1210		630 KC
CFQC	Saskatoon, Sask.	500	910		CFCT
CFRB	Twp. of King, York County, Ont.	4000	960		CJGX CNRA
CFRC	Kingston, Ont.	500	930		645 KC
CHCA	Calgary, Alta.	500	690		CHRC
CHCK	St. Charlottetown, P. E. I.	100	960		
CHCS	Hamilton, Ont.	10	1120		665 KC
CHCT	Red Deer, Alta.	1000	840		CHWK
CHGS	Summerside, P. E. I.	100	1120		690 KC
CHLS	Vancouver, B. C.	50	730		CFAC
CHMA	Edmonton, Alta.	250	580		CFCN
CHML	Hamilton, Ont.	50	880		CHCA
CHNS	Halifax, N. S.	500	910		CJBC
CHRC	Quebec, Que.	100	645		CJCJ
CHWC	Pilot Butte, Sask.	500	960		CJSC
CHWK	Chilliwack, B. C.	100	665		CKGW
CHYC	St. Hyacinthe, Que.	5000	730		CNRC
CJBC	Toronto, Ont.	5000	690		CPRY
CJBR	Regina, Sask.	500	960		730 KC
CJCA	Edmonton, Alta.	500	930		CHLS
CJCB	Sydney, N. S.	50	880		CHYC CKAC

RCA Radiotrons—The nation's choice

CANADIAN BROADCASTING STATIONS

Call Letters	TRANSMITTER LOCATION	Power Watts	Kilo-cycles	Dial Setting	Kilocycle Index
CJCI	East Calgary, Alta.	500	690		730 KC
CJGC	Strathburn, Ont.	500	910		(Cont'd)
CJGX	Yorkton, Sask.	500	630		CKCD
CJOC	Lethbridge, Alta.	50	1120		CKFC
CJOR	Sea Island, B. C.	500	1210		CKMO
CJRM	Moose Jaw, Sask.	500	600		CKWX
CJRW	Fleming, Sask.	500	600		CNRM
CJSC	Toronto, Ont.	5000	690		780 KC
CKAC	St. Hyacinthe, Que.	5000	730		CKY
CKCD	Vancouver, B. C.	50	730		CNRW
CKCI	Quebec, Que.	22.5	880		840 KC
CKCK	Regina, Sask.	500	960		CFCA
CKCL	Toronto, Ont.	500	580		CHCT
CKCO	Ottawa, Ont.	100	890		CKLC
CKCR	Waterloo, Ont.	50	1010		CKOW
CKCV	Quebec, Que.	50	880		CNRD
CKFC	Vancouver, B. C.	50	730		CNRT
CKGW	Bowmanville, Ont.	5000	690		880 KC
CKIC	Wolfville, N. S.	50	1010		CHML
CKLC	Red Deer, Alta.	1000	840		CJCB
CKMC	Cobalt, Ont.	15	1210		CKCI
CKMO	Vancouver, B. C.	50	730		CKCV
CKNC	Toronto, Ont.	500	580		CNRQ
CKOC	Hamilton, Ont.	50	1120		890 KC
CKOW	Toronto, Ont.	500	840		CFBO
CKPC	Preston, Ont.	25	1210		CKCO
CKPR	Port Arthur, Ont.	50	890		CKPR
CKUA	Edmonton, Alta.	500	580		910 KC
CKWX	Vancouver, B. C.	100	730		CFQC
CKX	Brandon, Man.	500	540		CHNS
CKY	Winnipeg, Man.	5000	780		CJGC
CNRA	Moncton, N. B.	500	630		CNRH
CNRC	Calgary, Alta.	500	690		CNRL
					CNRS

To get the best from your set use RCA Radiotrons

CANADIAN BROADCASTING STATIONS

Call Letters	TRANSMITTER LOCATION	Power Watts	Kilo-cycles	Dial Setting	Kilocycle Index
CNRD	Red Deer, Alta.	1000	840		930 KC
CNRE	Edmonton, Alta.	500	930		CFRC
CNRH	Halifax, N. S.	500	910		CJCA
CNRL	Strathburn, Ont.	500	910		CNRE
CNRM	Montreal, Que.	5000	730		960 KC
CNRO	Ottawa, Ont.	500	600		CFCY
CNRQ	Quebec, Que.	50	880		CFRB
CNRR	Regina, Sask.	500	960		CHCK
CNRS	Saskatoon, Sask.	500	910		CHWC
CNRT	Toronto, Ont.	500	840		CJBR
CNRV	Vancouver, B. C.	500	1030		CKCK
CNRW	Winnipeg, Man.	5000	780		CNRR
CNRX	Toronto, Ont.	4000	960		CNRY
CPRY	Bowmanville, Ont.	5000	690		1010 KC

BROADCASTING STATIONS OF U. S. POSSESSIONS

KFIU	Juneau, Alaska	10	1310		CFCL
KFQD	Anchorage, Alaska	100	1230		CNRY
KGBU	Ketchikan, Alaska	500	900		1120 KC
KGMB	Honolulu, Hawaii	500	1320		CFJC
KGU	Honolulu, Hawaii	1000	940		CHCS
WKAQ	San Juan, Porto Rico	500	890		CHGS

CENTRAL AMERICAN AND WEST INDIAN STATIONS

TIC	San Jose, Costa Rico	15	882		1200 KC
HIX	Santa Domingo, Dominican Republic	1000	669		CFCH
RUS	San Salvador, El Salvador	500	664		1210 KC
TGW	Guatemala, Guatemala	50	571		CFCO
HHK	Port-au-Prince, Haiti	1000	920		CFNB
HRB	Tegucigalpa, Honduras	2300	1370		CJOR
					CKMC
					CKPC

Improve your Radio set with RCA Radiotrons

CUBAN BROADCASTING STATIONS

Call Letters	TRANSMITTER LOCATION	Power Watts	Kilo-cycles	Dial Setting	Kilocycle Index
CMAA	Guanajay.	30	1090		
CMAB	Pinar del Rio.	20	1250		
CMBA	Habana.	50	1345		
CMBC	Habana.	150	955		
CMBD	Habana.	150	955		
CMBF	Habana.	7.5	1345		
CMBG	Habana.	50	1405		
CMBH	Habana.	30	1500		
CMBI	Habana.	30	1405		
CMBJ	Habana.	15	1285		
CMBK	Marianao.	15	1405		
CMBL	Habana.	15	1500		
CMBM	Habana.	15	1285		
CMBN	Los Pinos.	30	1405		
CMBR	Arroyo Apolo.	15	1500		
CMBS	Habana.	150	790		
CMBT	Habana.	150	1070		
CMBW	Marianao.	150	1010		
CMBX	Habana.	30	1405		
CMBY	Habana.	100	1405		
CMBZ	Habana.	150	1010		
CMC	Habana.	500	845		
CMCA	Habana.	150	1225		
CMCB	Habana.	150	1070		
CMCD	Habana.	15	1345		
CMCF	Habana.	250	900		
CMCG	Guanabacoa.	30	1285		
CMCH	Habana.	15	1285		
CMCJ	Habana.	250	550		
CMCM	Marianao.	15	1500		
CMCN	Marianao.	250	1225		
CMCO	Marianao.	225	660		
CMCQ	Habana.	600	1150		
CMCR	Habana.	20	1285		

Want thrilling tone? Buy new RCA Radiotrons

CUBAN BROADCASTING STATIONS (Cont'd)

Call Letters	TRANSMITTER LOCATION	Power Watts	Kilo-cycles	Dial Setting	Kilocycle Index
CMCU	Habana	50	1345		
CMCX	Marianao	250	1010		
CMCY	Habana	15	1345		
CMGA	Colon	100	834		
CMGB	Matanzas	7.5	1185		
CMGC	Matanzas	30	1315		
CMGD	Matanzas	5	1140		
CMGE	Cardenas	30	1375		
CMGH	Matanzas	60	1250		
CMGI	Matanzas	30	1094		
CMGT	Matanzas	50	977		
CMHA	Cienfuegos	200	1154		
CMHB	Sagua la Grande	10	1500		
CMHC	Tuinucu	500	790		
CMHD	Caibarien	250	920		
CMHE	Santa Clara	20	1429		
CMHH	Cifuentes	10	870		
CMHI	Santa Clara	15	1110		
CMHJ	Cifuentes	40	645		
CMJA	Camaguey	10	1332		
CMJB	Ciego de Avila	20	1276		
CMJC	Camaguey	15	1321		
CMJE	Camaguey	5	856		
CMK	Habana	3000	730		
CMKA	Santiago de Cuba	20	1450		
CMKB	Santiago de Cuba	15	1199		
CMKC	Santiago de Cuba	150	1034		
CMKD	Santiago de Cuba	20	1100		
CMKE	Santiago de Cuba	250	1250		
CMKF	Holguin	30	1363		
CMKG	Santiago de Cuba	30	1176		
CMKH	Santiago de Cuba	250	1322		
CMQ	Habana	250	1150		
CMW	Habana	700	588		
CMX	Habana	500	900		

For tonight's big hour, buy new RCA Radiotrons

MEXICAN BROADCASTING STATIONS

Call Letters	TRANSMITTER LOCATION	Power Watts	Kilo-cycles	Dial Setting	Kilocycle Index
XEA	Guadalajara	100	1200		
XEB	Mexico City	1000	1030		
XEC	Toluca	50	1333		
XED	Reynosa	10000	961		
XEE	Linares	10	1000		
XEF	Oaxaca	100	1132		
XEFA	Mexico City	250	1250		
XEFE	Nuevo Laredo	100	980		
XEG	Mexico City	2000	910		
XEH	Mexico City	100	1130		
XEI	Morelia	100	1000		
XEJ	Ciudad Juarez	100	857		
XEK	Mexico City	100	990		
XEL	Saltillo	10	1090		
XEM	Tampico	500	841		
XEN	Mexico City	1000	719		
XEO	Mexico City	5000	940		
XEP	Nuevo Laredo	200	1500		
XEQ	Ciudad Juarez	1000	750		
XER	Mexico City	100	674		
XES	Tampico	500	890		
XET	Monterrey	1500	630		
XETA	Mexico City	500	1140		
XETF	Vera Cruz	500	680		
XEU	Vera Cruz	100	800		
XEV	Puebla	100	1035		
XEW	Mexico City	5000	780		
XEX	Mexico City	500	1190		
XEY	Merida	100	547		
XEZ	Mexico City	500	588		
XFA	Mexico City	50	500-600		
XFC	Aguascalientes	350	804		
XFE	Villahermosa	350	804		
XFF	Chihuahua	250	923		
XFG	Mexico City	2000	638		
XFH	Mexico City	250	—		
XFI	Mexico City	1000	818		
XFZ	Mexico City	500	860		

Add pep to your radio with new RCA Radiotrons

ACTIVE RELAY BROADCASTING STATIONS OF THE WORLD SHORT WAVE

Call Letters	TRANSMITTER LOCATION	Kilo-cycles	Power Watts	Time Difference*
OK1MP1	Prague, Czechoslovakia. Elektra Company	5169	5000	6:00 p.m.
HVJ	Vatican City, Rome, Italy Holy See	5968	8000	6:00 p.m.
W9XF	Downer's Grove, Ill. Great Lakes Broadc'g Co.	6020	5000	11:00 a.m.
W2XAL	Coytesville, N. J. Aviation Radio Station, Inc.	6040	500	12:00 noon
W3XAU	Byberry, Pa. Universal Broadcasting Co.	6060	500	12:00 noon
W8XAL	Mason, Ohio Crosley Radio Corporation	6060	250	12:00 noon
UON2	Vienna, Austria Oesterreichischer Radio	6073	15000	6:00 p.m.
W9XAA	Chicago, Ill. Chicago Federation of Labor	6080	500	11:00 a.m.
W3XAL	Bound Brook, N. J. National Broadcasting Co.	6100	20000	12:00 noon
W2XE	Jamaica, L. I., N. Y. Atlantic Broadcasting Corp.	6120	5000	12:00 noon
KZRM	Manila, P. I. Radio Corp. of Philippines	6130	1000	1:00 a.m.
W8XK	E. Pittsburgh, Pa. Westinghouse Elec. & Mfg. Co.	6140	40000	12:00 noon
HRB	Tegucigalpa, Honduras. Tropical Radio Tel. Co.	6170	2300	11:00 a.m.
J1AA	Iwatsuki, Japan Japan Wireless Tel. Co.	7880	...	2:00 a.m.
VK3ME	Melbourne, Australia Amalgamated Wireless	9510	...	3:00 a.m.
OXY	Lynghy, Denmark Dir. Gen. of Posts & Tel.	9520	500	6:00 p.m.

* Foreign time based on 12:00 Noon U.S.T. N.B.—This does not indicate that these stations broadcast at these times.

ACTIVE RELAY BROADCASTING STATIONS OF THE WORLD SHORT WAVE

Call Letters	TRANSMITTER LOCATION	Kilo-cycles	Power Watts	Time Difference*
W2XAF	Schenectady, N. Y. General Electric Co.	9530	40000	12:00 noon
.....	Koenigswusterhausen, Ger. Deutsche Welle G. M. B. H.	9560	15000	6:00 p.m.
W1XAZ	E. Springfield, Mass. Westinghouse Elec. & Mfg. Co.	9570	10000	12:00 noon
KZRM	Manila, P. I. Radio Corp. of Philippines	9570	1000	1:00 a.m.
W3XAU	Byberry, Pa. Universal Broadcasting Co.	9590	500	12:00 noon
PCJ	Hilversum, Holland Phillips Lamp Works	9590	12000	5:19:32 p.m.
LSX	Buenos Aires, Argentina Transradio Internacional	10350	12000	1:00 p.m.
VK2ME	Sydney, Australia Amalgamated Wireless	10520	20000	3:00 a.m.
CJRX	Middlechurch, Manitoba, Can. James Richardson & Sons, Ltd.	11720	2000	11:00 a.m.
XDA	Mexico City, Mexico National Telegraphs	11728	5000	10:00 a.m.
G5SW	Chelmsford, England British Broadcasting Corp.	11750	9500	5:00 p.m.
.....	Koenigswusterhausen, Ger. Deutsche Welle, G. M. B. H.	11760	15000	6:00 p.m.
HHP-2	Bangkok, Siam Min. of Commerce & Com.	11774.2	15000	12:00 m'd't
W2XAL	Coytesville, N. J. Aviation Radio Station, Inc.	11800	500	12:00 noon
IRRO	Rome, Italy. Ente Italiano Audizione Radiofoniche	11800	6:00 p.m.

*Foreign time based on 11:00 Noon E.S.T. N.B.—This does not indicate that these stations broadcast at these times.

ACTIVE RELAY BROADCASTING STATIONS OF THE WORLD SHORT WAVE

Call Letters	TRANSMITTER LOCATION	Kilo-cycles	Power Watts	Time Difference*
W9XAA	Chicago, Ill. Chicago Federation of Labor	11840	500	11:00 a.m.
W2XE	Jamaica, L. I., N. Y. Atlantic Broadcasting Corp.	11840	20000	12:00 noon
W2XK	E. Pittsburgh, Pa. Westinghouse Elec. & Mfg. Co.	11880	40000	12:00 noon
HVJ	Vatican City, Rome, Italy. . . . Holy See	15120	8000	6:00 p.m.
W2XK	E. Pittsburgh, Pa. Westinghouse Elec. & Mfg. Co.	15210	40000	12:00 noon
W2XAL	Coytesville, N. J. Aviation Radio Station, Inc.	15250	500	12:00 noon
W2XE	Jamaica, L. I., N. Y. Atlantic Broadcasting Corp.	15280	20000	12:00 noon
W2XAD	Schenectady, N. Y. General Electric Co.	15340	25000	12:00 noon
PHI	Huisen, Holland. Phillips Lamp Works	17775	130000	5:19:32 p.m.
W8XK	E. Pittsburgh, Pa. Westinghouse Elec. & Mfg. Co.	17780	40000	12:00 noon
W9XAA	Chicago, Ill. Chicago Federation of Labor	17780	500	11:00 a.m.
W2XAL	Coytesville, N. J. Aviation Radio Station, Inc.	21460	500	12:00 noon
W8XK	E. Pittsburgh, Pa. Westinghouse Elec. & Mfg. Co.	21540	40000	12:00 noon

NOTE.—This list of active relay broadcasting stations of the world includes only major stations. There are many additional stations which operate at irregular intervals on low power, but it is believed that the average listener would not be interested in those stations. The list shows stations in all the broadcast bands which will serve as a basic calibration marker from which any other station may be readily picked up.

* Foreign time based on 12:00 Noon E.S.T. N.B.—This does not indicate that these stations broadcast at these times.

STATE INDEX TO BROADCASTING STATIONS

ALABAMA

Birmingham, WBRC*, WKBC,
WAPI Δ
Gadsden, WJBY
Mobile, WODX
Montgomery, WSFA
Talladega, WFDW

ARIZONA

Flagstaff, KFXV
Jerome, KCRJ
Phoenix, KTAR Δ , KOY
Prescott, KPJM
Tucson, KGAR, KVOA

ARKANSAS

Blytheville, KLCN
Fayetteville, KUOA
Ft. Smith, KFPW
Hot Springs, KTHS Δ
Little Rock, KLRA*, KGHI,
KGJF
Paragould, KBTM

CALIFORNIA

Berkeley, KRE
Beverly Hills, KMPC
Burbank, KELW
Culver City, KFVD
El Centro, KXO
Fresno, KMJ
Hayward, KZM
Hollywood, KNX, KFVB
Holy City, KPQU
Inglewood, KMCS
Long Beach, KFOX, KGER
Los Angeles, KFI Δ , KFSG,
KGEF, KGPJ, KHJ*, KTBI,
KECA Δ , KMTR, KTM
Oakland, KLS, KLX, KROW
Pasadena, KPPC, KPSN
Sacramento, KFBK

San Bernardino, KFXM
San Diego, KFSD Δ , KGB*
San Francisco, KTAB, KGO Δ ,
KFRC*, KFWI, KJBS,
KPO Δ , KGGC, KYA
San Jose, KQW
Santa Ana, KREG
Santa Barbara, KDB
Santa Maria, KSMR
Stockton, KGDM, KWG

COLORADO

Colorado Springs, KVOR*
Denver, KFEL, KFUP, KFXF,
KOA Δ , KPOF, KLZ*
Edgewater, KFXJ
Fort Morgan, KGEW
Greeley, KFKA
Pueblo, KGHF
Trinidad, KGIW
Yuma, KGEK

CONNECTICUT

Bridgeport, WICC
Hartford, WDRC*, WTIC Δ
Storrs, WCAC

DELAWARE

Wilmington, WDEL, WILM

DISTRICT OF COLUMBIA

Washington, WMAL*, WRC Δ ,
WOL

FLORIDA

Clearwater, WFLA Δ , WSUN Δ
Gainesville, WRUF
Jacksonville, WJAX Δ
Miami Beach, WIOD Δ , WMBF,
WQAM*
Orlando, WDBO*
Pensacola, WCOA
Tampa, WDAE*, WMBR

Δ National Broadcasting Company.
*Columbia Broadcasting System.

GEORGIA

Atlanta, WCST*, WSB △
 Augusta, WRDW
 Columbus, WRBL
 Macon, WMAZ
 Rome, WFDV
 Savannah, WTOG*
 Thomasville, WQDX
 Tifton, WRBI
 Toccoa, WTFI

IDAHO

Boise, KIDO
 Idaho Falls, KID
 Nampa, KFXD
 Pocatello, KSEI
 Sandpoint, KGKX
 Twin Falls, KTFI

ILLINOIS

Carthage, WCAZ
 Chicago, KYW △, WAAF,
 WBCN, WCFL △, WCHI,
 WCRW, WEDC, WENR △,
 WGES, WKBI, WPCC,
 WGN*, WMAQ △, WMBI,
 WBBM*, WSBC, WIBO △,
 WJBT, WLIB, WLS △,
 KFKX △

Cicero, WHFC
 Decatur, WJBL
 Evanston, WEHS
 Galesburg, WKBS
 Harrisburg, WEBQ
 Joliet, WCLS, WKBB
 La Salle, WJBC
 Mooseheart, WJJD*
 Mount Prospect, WJAZ
 Peoria Heights, WMBD
 Quincy, WTAD
 Rockford, KFLV
 Rock Island, WHBF
 Springfield, WCBS, WTAX
 Tuscola, WDW
 Urbana, WILL
 Zion, WCBD

INDIANA

Anderson, WHBU

Connersville, WKBV
 Culver, WCMA
 Evansville, WGBF
 Fort Wayne, WGL*, WOWO*
 Gary, WJKS
 Hammond, WVAE
 Indianapolis, WFBM*, WKBF
 La Porte, WRAF
 Marion, WJAK
 Muncie, WLBC
 South Bend, WSBT
 Terre Haute, WBOW
 W. Lafayette, WBAA

IOWA

Ames, WOI
 Boone, KFGQ
 Cedar Rapids, KWCR
 Clarinda, KSO
 Council Bluffs, KOIL*
 Davenport, WOC △
 Decorah, KGCA, KWLC
 Des Moines, WHO △
 Ft. Dodge, KFJY
 Iowa City, WSUI
 Marshalltown, KFJB
 Muscatine, KTNT
 Ottumwa, WIAS
 Red Oak, KICK
 Shenandoah, KFNF, KMA
 Sioux City, KSCJ*
 Waterloo, WMT*

KANSAS

Dodge City, KGNO
 Kansas City, WLBF
 Lawrence, KFKU, WREN △
 Manhattan, KSAC
 Milford, KFKB
 Topeka, WIBW*
 Wichita, KFH*

KENTUCKY

Covington, WCKY △
 Hopkinsville, WFIW*
 Louisville, WHAS △, WLAP*
 Paducah, WPAD

LOUISIANA

Monroe, KMLB
New Orleans, WABZ, WJBO,
WJBW, WSMB Δ , WWL,
WDSU*
Shreveport, KTSL, KWEA,
KRMD, KTBS, KWKH

MAINE

Augusta, WRDU
Bangor, WABI, WLBZ*
Portland, WCSH Δ

MARYLAND

Baltimore, WCAO*, WCBM,
WBAL Δ , WFBR Δ
Cumberland, WTBO

MASSACHUSETTS

Boston, WBZA Δ , WEEL Δ ,
WNAC*, WSSH, WLOE,
WBIS, WHDH, WAAB*
Fall River, WSAR
Lexington, WLEX, WLEY
Needham, WBSO
New Bedford, WNBH
South Dartmouth, WMAF
Springfield, WBZ Δ
Worcester, WTAG Δ , WORC*,
WEPS

MICHIGAN

Battle Creek, WELL
Bay City, WBCM*
Berrsen Springs, WKZO
Calumet, WHDF
Detroit, WMBC, WWJ Δ ,
WJR Δ , WXYZ*
East Lansing, WKAR
Flint, WFDF
Grand Rapids, WASH, WOOD
Highland Park, WJBK
Jackson, WIBM
Lapeer, WMPC
Ludington, WKBZ
Royal Oak, WEXL

MINNESOTA

Fergus Falls, KGDE
Minneapolis, WDGY, WHDI,

WLB, WRHM, WCCO*,
WGMS
Moorhead, KGFK
Northfield, KFMX, WCAL
St. Paul, KSTP Δ

MISSISSIPPI

Greenville, WRBQ
Gulfport, WGCM
Hattiesburg, WRBJ
Jackson, WJDX Δ
Meridian, WCOC
Tupelo, WDIX

MISSOURI

Cape Girardeau, KFVS
Clayton, KFUD
Columbia, KFRU
Grant City, KGIZ
Jefferson City, WOS
Joplin, WMBH
Kansas City, KWKC, WDAF Δ ,
WOQ, WHB, KMBC*
St. Joseph, KGBX, KFEQ
St. Louis, KFWF, KSD Δ ,
KWK Δ , WEW, WIL,
KMOX*

MONTANA

Billings, KGHL
Butte, KGIR
Great Falls, KFBB
Kalispell, KGEZ
Wolf Point, KGCK

NEBRASKA

Clay Center, KMMI
Lincoln, KFAB Δ , KFOR, WCAJ
Norfolk, WJAG
North Platte, KGNF
Omaha, WAAW, WOW Δ
Ravenna, KGFV
Scottsbluff, KGKY
York, KGBZ

NEVADA

Las Vegas, KGIX
Reno, KOH*

NEW HAMPSHIRE

Laconia, WKAV

NEW JERSEY

Asbury Park, WCAP

Atlantic City, WPG*

Camden, WCAM

Hackensack, WBMS

Jersey City, WAAT, WKBO,
WHOM

Newark, WAAM, WGCP,

WNJ, WOR

Paterson, WODA

Red Bank, WJBI

Trenton, WOAX

NEW MEXICO

Albuquerque, KGGM

Raton, KGFL

State College, KOB

NEW YORK

Albany, WOKO*

Auburn, WMBO

Binghamton, WNBF

Brooklyn, WBBC, WBBR,

WLTH, WMBQ, WCLB,

WCGU, WFOX

Buffalo, WEHR, WGR*,

WKBW*, W5VS, WMAK,

WBEN Δ

Canton, WCAD

Freeport, WGBB

Glens Falls, WBGF

Ithaca, WLCI, WEAI

Jamaica, WMRJ

Jamestown, WOCL

Long Island City, WLBX

New York, WBNX, WHN,

WJZ Δ, WMCA, WMSG,

WNYC, WPCH, WRNY,

WABC*, WOV, WQAO,

WLWL, WBOQ, WCDA,

WEAF Δ, WEVD, WGBS,

WHAP, WPAP

Patchogue, WPOE

Rochester, WHAM Δ, WHEC*,
WABO

Saranac Lake, WNBZ

Schenectady, WGY Δ

Syracuse, WFBL*, WSYR

WMAC

Troy, WHAZ

Tupper Lake, WHDL

Utica, WIBX

Woodside, WWRL

Yonkers, WCOH

NORTH CAROLINA

Asheville, WWNC Δ

Charlotte, WBT*

Gastonia, WSOC

Greensboro, WBIG

Raleigh, WPTF Δ

Wilmington, WRBT

Winston-Salem, WSJS

NORTH DAKOTA

Bismarck, KFJR Δ

Devils Lake, KDLR

Fargo, WDAY Δ

Grand Forks, KFJM

Mandan, KGCU

Minot, KLPM

OHIO

Canton, WHBC

Cincinnati, WKRC*, WSAI Δ,

WLW Δ, WFBE

Cleveland, WHK*, WJAY,

WTAM Δ, WGAR Δ

Columbus, WAIU*, WCAH*,

WEAO, WSEN

Dayton, WSMK

Mansfield, WJW

Mt. Orab, WHBD

Steubenville, WIBR

Tallmadge, WADC*

Toledo, WSPD*

Youngstown, WKBN*

Zanesville, WALR

OKLAHOMA

Alva, KGFF
Chickasha, KOCW
Elk City, KGMP
Enid, KCRC
Norman, WNAD
Oklahoma City, KFJF*, KFXR,
KGFG, WKY Δ
Ponca City, WBBZ
South Coffeyville, KGGF
Tulsa, KVOO Δ

OREGON

Astoria, KFJI
Corvallis, KOAC
Eugene, KORE
Marshfield, KOOS
Medford, KMED
Portland, KEX, KOIN*, KBPS,
KFJR, KGW Δ, KTBR,
KWJJ, KXL

PENNSYLVANIA

Allentown, WCBA, WSN
Altoona, WFBG
Carbondale, WNBW
Elkins Park, WIBG
Erie, WEDH
Grove City, WSAJ
Harrisburg, WBAK, WCOD,
WHP*
Johnstown, WJAC
Lancaster, WGAL, WKJC
Lewisburg, WJBU
Oil City, WLBW*
Philadelphia, WCAU*, WFI Δ,
WIP, WLIT Δ, WRAX,
WPEN, WPAN*, WELK,
WHAT, WTEL
Pittsburgh, KQV, WCAE Δ,
WJAS*, KDKA Δ
Reading, WRAW
Scranton, WGBI, WQAN
Silver Haven, WNBO
State College, WPSC
Wilkes-Barre, WBAX, WBRE
Williamsport, WRAK

RHODE ISLAND

Newport, WMBA
Pawtucket, WPAW
Providence, WEAN*, WJAR Δ,
WDWF, WLSI

SOUTH CAROLINA

Charleston, WCSC
Columbia, WIS Δ
Spartanburg, WSPA

SOUTH DAKOTA

Brookings, KFDY
Huron, KGDY
Mitchell, KGDA
Pierre, KGFX
Rapid City, WCAT
Sioux Falls, KSOO
Vermilion, KUSD
Watertown, KGCR
Yankton, WNAX*

TENNESSEE

Bristol, WOPI
Chattanooga, WDOD*
Knoxville, WFBC, WROL,
WNOX*
Memphis, WGBC, WHBQ,
WMC Δ, WNRB, WREC*,
WOAN
Nashville, WLAC*, WSM Δ
Springfield, WSIX
Union City, WOBT

TEXAS

Abilene, KFYO
Amarillo, KGRS, WDAG
Austin, KUT
Beaumont, KFDM
Brownsville, KWVG
Brownwood, KGKB
College Station, WTAW
Corpus Christi, KGFI
Dallas, KRLD*, WFAA Δ,
WRR*
Dublin, KFPL
El Paso, WDAH, KTSM

TEXAS (Cont'd)

Fort Worth, KFJZ, WBAP Δ ,
 KTAT
 Galveston, KFLX, KFUL
 Greenville, KFPM
 Harlingen, KRGV
 Houston, KTRH*, KPRC Δ ,
 KTLC, KXYZ
 San Angelo, KGKL
 San Antonio, KONO, KTAP,
 K TSA*, WOAI Δ , KMAC
 Waco, WACO*
 Wichita Falls, KGKO

UTAH

Ogden, KLO
 Salt Lake City, KDYL*, KSL Δ

VERMONT

Burlington, WCAX
 Rutland, WSYB
 Springfield, WNBX
 St. Albans, WQDM

VIRGINIA

Alexandria, WJSV
 Arlington, NAA
 Danville, WBTM
 Emory, WEHC
 Lynchburg, WLVA
 Newport News, WGH
 Norfolk, WTAR*, WPOR
 Petersburg, WLBG
 Richmond, WBBL, WMBG,
 WRVA Δ
 Roanoke, WDBJ*, WRBX

WASHINGTON

Aberdeen, KXRO
 Bellingham, KVO5
 Everett, KFBL

Lacey, KGY
 Pullman, KWSC
 Seattle, KOL*, KFQW, KJR,
 KOMO Δ , KPCB, KRSC,
 KTW, KVL, KXA
 Spokane, KFIO, KFPY*, KGA,
 KHQ Δ
 Tacoma, KMO, KVI*
 Walla Walla, KUJ
 Wenatchee, KPQ
 Yakima, KIT

WEST VIRGINIA

Bluefield, WHIS
 Charleston, WOBU
 Fairmont, WMMN
 Huntington, WSAZ
 Wheeling, WWVA*

WISCONSIN

Eau Claire, WTAQ*
 Fond du Lac, KFIZ
 Green Bay, WHBY
 Janesville, WCLO
 La Crosse, WKBH
 Madison, WHA, WIBA Δ
 Manitowoc, WOMT
 Milwaukee, WHAD, WISN*,
 WTMJ Δ
 Poyntette, WIBU
 Racine, WIUN
 Sheboygan, WHBL
 South Madison, WISJ
 Stevens Point, WLBL
 Superior, WEBC Δ

WYOMING

Casper, KDFN



THE SECRET OF MARVELOUS RADIO TONE?

TUBES in the prime of life, giving your set the finest service it can wish for. Year-old tubes should be renewed at once with new RCA Radiotrons, the largest selling radio tubes in the world.

Beware of worn-out tubes!

Even a single worn-out tube in a set of new ones will cause hum, distortion, and poor tone! Remember—the eye can't tell the difference between a good and a worn-out tube. So today, . . . take the tubes out of your set and have us test them, free of charge. Or better still, telephone our service department immediately to have your worn-out tubes renewed with a set of new RCA Radiotrons—the standard tubes of the industry. A complete set of new RCA Radiotrons will put new life in your radio.

RCA Radiotrons have not only our endorsement, but also that of the nation's leading radio engineers and broadcasting stations.



Our Aim Is To Serve

THE other day we were asked why it was that people liked to do business with us. To tell you the truth, we never thought much about it.

We think that there are many reasons, among them being:

Quality merchandise—You will find here a wide selection of nationally known products—backed by the guarantees of leading manufacturers.

Right prices—You'll find our prices extremely attractive to the thrifty pocket-book.

Courteous service—When you give us business, our method of showing our appreciation is to extend courteous and efficient service.

Reputation—We have a reputation of standing back of the merchandise we sell. The customer must be satisfied.

If we have not had the pleasure of serving you, may we look forward to the opportunity of doing so?

WAYNE SPINKS COMPANY

138 Union Avenue

Phones 8-2188 - 8-2189