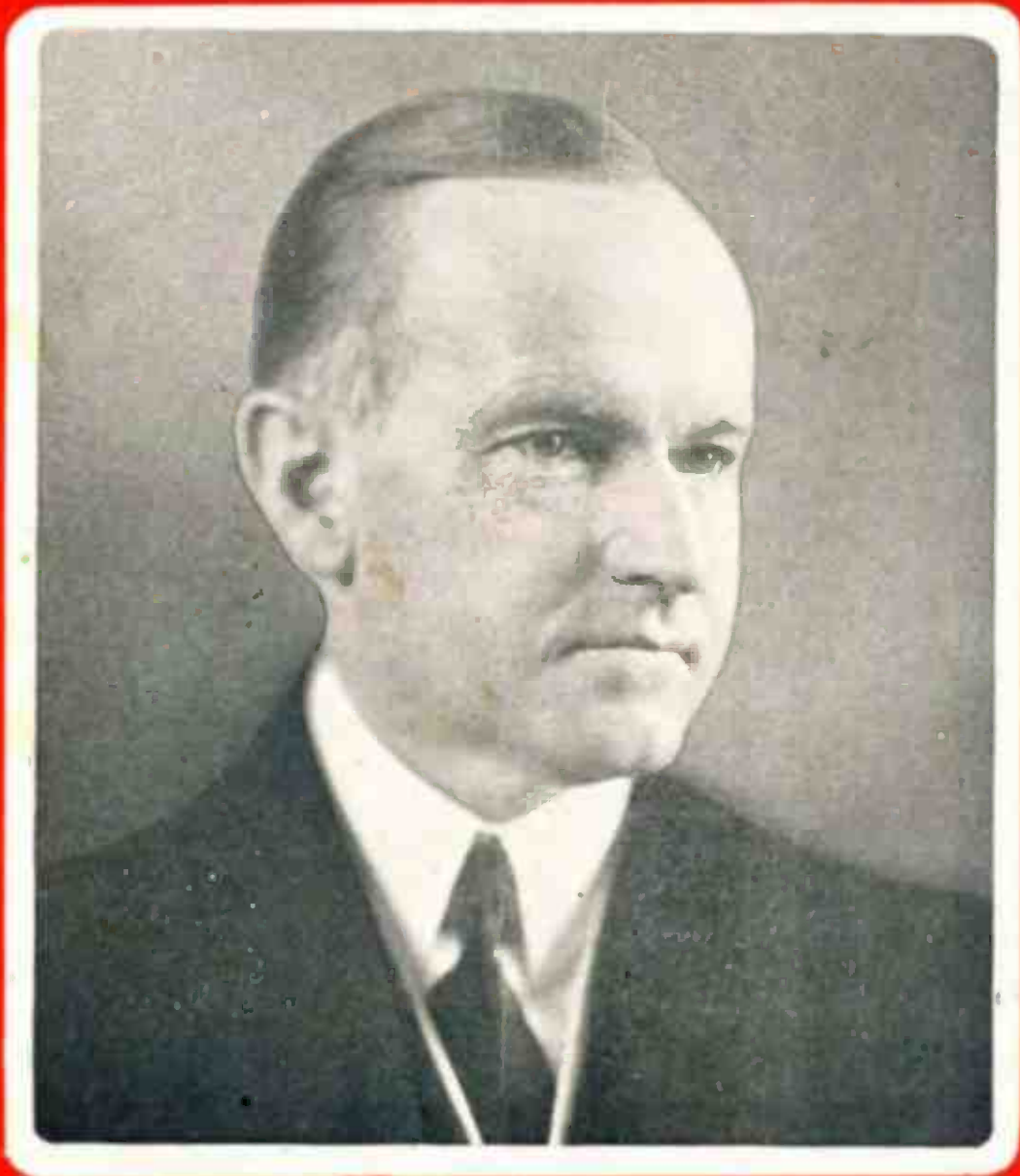


THE 1927

RADIO CALL BOOK

PUBLISHED BY RADIO DOINGS
COMPLETE AND UP-TO-DATE OFFICIAL LIST
OF BROADCAST STATIONS COMPILED BY THE
U.S. DEPARTMENT OF COMMERCE



Price 25 Cents

ONCE MORE CROSLEY

Is Demonstrating Its
Dominant Leadership
in 1927 Radio

Ours is the task and the privilege of distributing Crosley Radio Sets in California. We sell them for exactly what they are—maximum values at minimum cost.

And back of every sale is an organization of specialists who understand dealers' problems and dealers' needs. Our success is the best proof of efficient, friendly, personal service.

KOLSTER CROSLEY BRANDES
BURGESS BATTERIES RADIOTRONS
TUNGAR AMRAD VESTA
ACME MODERN

Distributed by,

H. Earle Wright, Inc.

123 Second St., San Francisco 415 E. Eighth St., Los Angeles



Installed *FREE*
Runs Any Radio from
Electric Light Socket

Think of it—your old "A" and "B" Batteries done away with forever—your Radio power as dependable as your electric lights. It makes no difference what kind of current you have. (50 or 60 cycle). Pemco will give you full satisfaction.

Improved reception is assured with a Pemco—no hum or distortion, but full power all the time. Everything is automatic on a Pemco—there are no switches on it—you turn your radio off and on the same as before.

There is a Pemco Dealer near you, or write one of the distributors today. Run your Radio with Pemco Power—better quality, easier distance, greater economy. Sold on easy terms.

SHERMAN, CLAY & CO.
 948 Santee St., Los Angeles

THE ELECTRIC CORP.
 1050 Santee St., Los Angeles

PACIFIC WHOLESALE RADIO, INC.
 1320 S. San Pedro St., Los Angeles

Pemco

automatic

"A" and "B" Power Unit

Consider All Things If You Are Trying For Distance

Here are points to check over if you are not bringing in the stations:

1. Learn whether your set was built to bring in distant points—you may be trying to over reach your set's possibilities.
2. Your aerial must be of sufficient length— too short an aerial may be handicapping you.
3. Check over the tubes. One or more may not be operating.
4. Your "A" and "B" power must be right. The correct voltage on each circuit in your set will give you results otherwise unobtainable.

The Willard "A" and "B" Power Units, designed and built by the Engineers who built the famous Willard "B" batteries in use by 175 of the world's broadcast stations, are what you may need to get stations that now seem to be beyond the reach of your set. The voltage control on the Willard "B" power unit permits the raising or lowering of the plate voltage to the exact point in each circuit necessary for the best reception. This is especially important when fishing for distance.

ASK ABOUT WILLARD POWER UNITS
AT
WILLARD SERVICE STATIONS
OR
YOUR NEAREST RADIO DEALER

The 1927 Radio Call Book

Published by

Radio Doings

LOS ANGELES
527-9 Van Nuya Bldg.
Tucker 8468

NEW YORK
17 West 42nd Street
Vanderbilt 4661

SAN FRANCISCO
406 New Call Bldg.
Douglas 1388

JANUARY 1, 1927

TUNING

Tuning for local and distant stations to get the very best results, which means clear, perfect tones, is very much like driving an automobile or working out a mathematical problem. It takes patience, and you must be exact to get perfect results. It has been my good fortune to bring in many distant stations, and I have obtained the results by following the procedure described below. Make sure that your batteries are at full charge, or if using an eliminator, that it is functioning properly, also that the tubes are in proper condition. If you are convinced that your set is in perfect working condition, then tune in all of the local stations, bringing them to the peak of oscillation and that you have their exact reading, then write the readings in a log for future reference.

Take any graph paper that is ruled off in either ten or twenty sections to the inch (if you haven't a sheet of graph paper it is easy to make one with a ruler and a pencil); write the dial numbers opposite the horizontal lines; such as, ten, twenty, eighty, etc.

Opposite the vertical lines put the meter wave length; such as, 200, 300, 350 and 500. Write the names of your

stations in on the exact meter number and you then have a perfect chart station finder. Transfer from your log the readings of your dial or dials to the chart. If the set is equipped with more than one dial, the first dial being the Antenna Tuning Dial will sometimes vary, due to the length of the antenna, but the second and third dials will nearly always remain constant.

Take a ruler and draw a straight line on your chart from the highest wave length station to the lowest wave length station. This will make it possible, if your set is calibrated correctly, to bring in any distant station within the range of your set.

You are now ready to go after distance. Suppose you want a station which is two thousand miles away, refer to your graph chart and go down the horizontal line of 350 meters until you cross the line that you have drawn on your chart. If the 350 meter line crosses the line that you have marked on your chart it will mean that this distant station should come in, say, at approximately forty on your dial. If you have more than one dial on your set, the same procedure should be followed

(Continued on Page 58)



Buy with confidence, where you see this sign.



RCA ♦ Radiola super-heterodyne does not grow old

For the finest radio broadcast reception, we recommend a Radiola and RCA loudspeaker. They are products of the combined electrical and radio knowledge of the Radio Corporation of America, General Electric and Westinghouse.

See Your Authorized Dealer



Illinois Electric Co.
315 S. San Pedro Street
LOS ANGELES

Leo J. Meyberg Co.
1022 Wall Street
LOS ANGELES

Pacific States Electric Co.
236 S. Los Angeles Street
LOS ANGELES

Wholesale Distributors

RCA Radiotrons

are the perfected result of technical research in the radio laboratories of the Radio Corporation of America, the General Electric Company, and the Westinghouse Electric and Manufacturing Company.



The Banta Co.
1805 S. Hill Street
LOS ANGELES

Pacific States Electric Co.
236 S. Los Angeles Street
LOS ANGELES

Chanslor & Lyon
1423 S. Grand Avenue
LOS ANGELES

Reiman Wholesale Elec. Co.
218 E. Third Street
LOS ANGELES

Illinois Electric Co.
315 S. San Pedro Street
LOS ANGELES

Sherman Clay Co.
944 Santee Street
LOS ANGELES

Leo J. Meyberg Co.
1022 Wall Street
LOS ANGELES

H. Earle Wright Co.
415 E. Eighth Street
LOS ANGELES

Wholesale Distributors

At Your Service

Walbert Isofarad Radios

Ranging in Price from
\$75.00 to \$650.00
Some With Battery Elimination

McMillan Radios

The Best Low-Priced Radio on the Market
\$55.00 to \$105.00

Utah Loud Speakers

Best By Test
\$10.00 to \$25.00

Walbert Penetrola

\$35.00

United Cabinets

Most Complete Line of Cabinets on the Coast
\$40.00 to \$250.00

C. W. SMITH CO.

Home of Utah Speakers

1125 Wall Street, Los Angeles, Cal.

WEStrome 3291

THE ADVANCED HANDY

TRICKLE-BOOSTER CHARGER

Converts your present battery into an up-to-date "A" Power Unit.

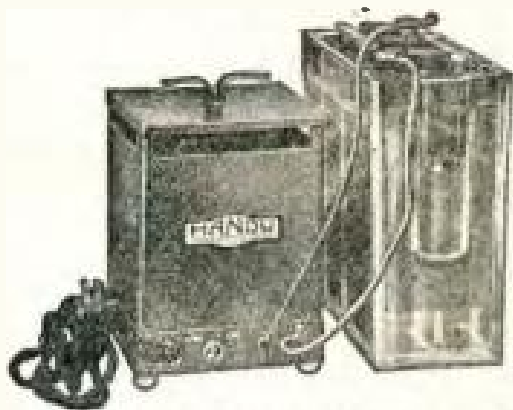
For Either 6 or 4 Volt
Storage Batteries

Absolutely quiet — Uses the long-life, 2 ampere bulb.

Great Flexibility — Long Life — Maximum Efficiency.



The Solution to the Radio "A" Power Problem



The Handy Trickle-Booster Charger with its "slow and fast" rate feature, gives the radio fan two chargers in one compact unit at a price lower than the standard battery charger. Should be permanently connected.

Ideal for console and built-in battery cabinets.

110 Volts, 50 or 60 Cycle—Complete—\$15.00

Ask Your Dealer for a Demonstration

C. C. LAWTON CO.

1125 Wall Street

Los Angeles

WEstmore 3291

Broadcasting Stations by Meters

| Wave Length Meters | Call Signal | Frequency Kilo-cycles | Location of Station | Power in Watts | Dial Settings | | | Remarks |
|--------------------|-------------|-----------------------|---------------------|----------------|---------------|---|---|---------|
| | | | | | 1 | 2 | 3 | |
| 555 | WOBB | 540 | Chicago, Ill. | 5 | | | | |
| 545 | KFUO | 550 | St. Louis, Mo. | 500 | | | | |
| 545 | KSD | 550 | St. Louis, Mo. | 500 | | | | |
| 545 | WTAG | 550 | Worcester, Mass. | 500 | | | | |
| 545 | KYW | 560 | Chicago, Ill. | 3500 | | | | |
| 545 | WHA | 560 | Madison, Wis. | 750 | | | | |
| 526 | WHO | 570 | Des Moines, Iowa | 5000 | | | | |
| 526 | WNYC | 570 | New York, N. Y. | 1000 | | | | |
| 526 | WOAW | 570 | Omaha, Nebr. | 1000 | | | | |
| 517 | WCX | 580 | Detroit, Mich. | 5000 | | | | |
| 517 | WLIB | 580 | New York City | 250 | | | | |
| 517 | WJR | 580 | Pontiac, Mich. | 5000 | | | | |
| 508 | KLX | 590 | Oakland, Calif. | 500 | | | | |
| 508 | KFQB | 590 | Fort Worth, Tex. | 1000 | | | | |
| 508 | WIP | 590 | Philadelphia, Pa. | 500 | | | | |
| 508 | WOO | 590 | Philadelphia, Pa. | 500 | | | | |
| 500 | KRSC | 600 | Seattle, Wash. | 50 | | | | |
| 500 | KBRU | 600 | Columbia, Mo. | 500 | | | | |
| 500 | WCSH | 600 | Portland, Me. | 500 | | | | |
| 500 | WMC | 600 | Memphis, Tenn. | 1000 | | | | |
| 492 | KGW | 610 | Portland, Ore. | 1500 | | | | |
| 492 | WEAF | 610 | New York, N. Y. | 5000 | | | | |
| 491 | WCFL | 610 | Chicago, Ill. | 1000 | | | | |
| 484 | WOC | 620 | Davenport, Iowa | 5000 | | | | |
| 484 | WSUI | 620 | Iowa City, Iowa | 500 | | | | |
| 476 | KGDI | 720 | Seattle, Wash. | 50 | | | | |
| 476 | WBAP | 630 | Fort Worth, Te. | 1500 | | | | |
| 476 | WFAA | 630 | Dallas, Tex. | 500 | | | | |
| 476 | WTIC | 630 | Hartford, Conn. | 500 | | | | |
| 469 | WJBT | 640 | Chicago, Ill. | 500 | | | | |
| 469 | WRC | 640 | Washington, D. C. | 500 | | | | |

IF YOU CAN'T BRING THEM IN SEE PAGE 4

MOST RADIO PER DOLLAR

IF you think this is merely a slogan for King Radio, then we invite you to go to any of the dealers whose names are listed below. Look at any King Radio. Inspect it. Mark its marvelous construction. See the Cushioned Tube Mounting. The Single Dial Station Selector. Feast your eyes on the mellow beauty of its fine cabinet work. Then listen to it. Wonderful purity of tone. Volume to spare. Selectivity that will amaze you.

After seeing the King, after hearing the King—write down the price you think it should be! Then ask what the price really is! You will not argue—you will know what we mean when we say King Radio is truly "Most Radio Per Dollar."

Distributors for Los Angeles Territory:

THE BANTA COMPANY
1801 S. HILL STREET
LOS ANGELES, CALIFORNIA

"Most Radio Per Dollar"

KING RADIO

Broadcasting Stations by Meters (Continued)

| Wave Length Meters | Call Signal | Frequency Kilo cycles | Location of Station | Power in Watts | Dial Settings | | | Remarks |
|--------------------|-------------|-----------------------|-----------------------|----------------|---------------|---|---|---------|
| | | | | | 1 | 2 | 3 | |
| 467 | KFI | 640 | Los Angeles, Calif. | 5000 | | | | |
| 461 | KFNF | 650 | Shenandoah, Iowa | 1000 | | | | |
| 461 | KMA | 650 | Shenandoah, Iowa | 500 | | | | |
| 461 | WAPI | 650 | Auburn, Ala. | 1000 | | | | |
| 461 | WCAE | 650 | Pittsburgh, Pa. | 500 | | | | |
| 454 | KFOA | 660 | Seattle, Wash. | 1000 | | | | |
| 454 | KTW | 660 | Seattle, Wash. | 1000 | | | | |
| 454 | WJZ | 660 | New York, N. Y. | 50000 | | | | |
| 448 | WMAQ | 670 | Chicago, Ill. | 1000 | | | | |
| 448 | WQJ | 670 | Chicago, Ill. | 500 | | | | |
| 443 | KSO | 740 | Clarinda, La. | 500 | | | | |
| 441 | KLDS | 680 | Independence, Mo. | 1000 | | | | |
| 441 | WDWF | 680 | Cranston, R. I. | 500 | | | | |
| 441 | WDWF | 680 | Cranston, R. I. | 500 | | | | |
| 441 | WMAF | 680 | So. Dartmouth, Mass. | 1000 | | | | |
| 441 | WOS | 680 | Jefferson City, Mo. | 500 | | | | |
| 434 | KG' H | 663 | Wayne, Neb. | 500 | | | | |
| 434 | NAA | 690 | Arlington, Va. | 1000 | | | | |
| 421 | KFKB | 695 | Melford, Kans. | 1000 | | | | |
| 431 | WIIAP | 695 | New York City | 500 | | | | |
| 430 | WNAC | 697 | Boston, Mass. | 500 | | | | |
| 430 | KFXF | 697 | Denver, Colo. | 500 | | | | |
| 428 | KPO | 700 | San Francisco, Calif. | 1000 | | | | |
| 428 | WKDR | 700 | Kenosha, Wis. | 10 | | | | |
| 428 | WSB | 700 | Atlanta, Ga. | 1000 | | | | |
| 423 | WEDC | 710 | Chicago, Ill. | 1000 | | | | |
| 422 326 | WKRC | 710 920 | Cincinnati, Ohio | 1000 | | | | |
| 422 | WLW | 710 | Cincinnati, Ohio | 5000 | | | | |
| 416 | WBBR | 720 | Rossville, N. Y. | 500 | | | | |
| 416 | WCCO | 720 | Anoka, Minn. | 5000 | | | | |
| 416 | WCRW | 720 | Chicago, Ill. | 50 | | | | |

IF YOU CAN'T BRING THEM IN SEE PAGE 4



Have You Ever Heard Complete Reception?

—Not until you “listen in” to Fada Harmonated Reception, a new development in radio science, will you hear *all* that the air has to offer.

And what a difference that makes! .

The superiority of Fada Harmonated Reception over ordinary radio is almost incredible!

Individually and totally shielded stages, together with perfect co-ordination of all items in the receiver and reproducer, form the basis for this remarkable reception.

Fada Harmonated Reception is now being demonstrated — *don't fail to hear it* — Write us for the nearest dealer.

Fada Neutrodyne Receivers—table and furniture models—8, 6 and 5 tubes—\$85 to \$120. Fada Cone Speaker—Table Type \$37. Pedestal Floor Type \$52.50

THE FLECTRIC CORPORATION

1050 Santee St., Los Angeles, Cal.

Phone WEStmore 8341

Broadcasting Stations by Meters (Continued)

| Wave Length Meters | Call Signal | Pre- quency KBo- cycles | Location of Station | Power in Watts | Dial Settings | | | Remarks |
|--------------------|-------------|----------------------------------|---------------------|----------------------|---------------|---|---|---------|
| | | | | | 1 | 2 | 3 | |
| 407 | WJAF | 737 | Ferndale, Mich. | 50 | | | | |
| 405 | KHJ | 740 | Los Angeles, Calif. | 500 | | | | |
| 405 | KMMJ | 740 | Clay Center, Neb. | 1000 | | | | |
| 405 | WJY | 740 | New York, N. Y. | 1000 | | | | |
| 405 | WOR | 740 | Newark, N. J. | 500 | | | | |
| 400 | WHAS | 750 | Louisville, Ky. | 500 | | | | |
| 395 | KHQ | 760 | Seattle, Wash. | 1000 | | | | |
| 395 | WFL | 760 | Philadelphia, Pa. | 500 | | | | |
| 395 | WLIT | 760 | Philadelphia, Pa. | 500 | | | | |
| 395 | WOAI | 760 | San Antonio, Tex. | 2000 | | | | |
| 391 | WODA | 767 | Paterson, N. J. | 250 | | | | |
| 389 | WEAR | 770 | Cleveland, Ohio | 750 | | | | |
| 389 | WTAM | 770 | Cleveland, Ohio | 3500 | | | | |
| 384 | KJR | 780 | Seattle, Wash. | 1000 | | | | |
| 384 | WAAW | 780 | Omaha, Nebr. | 500 | | | | |
| 384 | WGWB | 780 | Milwaukee, Wis. | 1000 | | | | |
| 384 | WLWI | 780 | New York, N. Y. | 5000 | | | | |
| 384 | WMBF | 780 | Miami Beach, Fla. | 500 | | | | |
| 354 | WVAF | 780 | Plainfield, Ill. | 10 | | | | |
| 380 | KFB | 790 | San Diego, Calif. | 100 | | | | |
| 380 | WGY | 790 | Schenectady, N. Y. | 5000 | | | | |
| 380 | WHAZ | 790 | Troy, N. Y. | 1000 | | | | |
| 375 | KFBU | 800 | Laramie, Wyo. | 1000 | | | | |
| 375 | KTHS | 800 | Hot Springs, Ark. | 1000 | | | | |
| 375 | KVOO | 800 | Bristow, Okla. | 500 | | | | |
| 375 | WRNY | 800 | Coytesville, N. Y. | 500 | | | | |
| 370 | KMTR | 810 | Los Angeles, Calif. | 500 | | | | |
| 370 | WBBK | 810 | Chicago, Ill. | 2000 | | | | |
| 370 | WJJD | 810 | Mooseheart, Ill. | 1000 | | | | |
| 367 | WEAN | 817 | Providence, R. I. | 500 | | | | |
| 366 | KZUK | 820 | Bagin, P. I. | 500 | | | | |

IF YOU CAN'T BRING THEM IN SEE PAGE 4

ATWATER KENT RADIO



Atwater Kent Radio Sets up
into tables and cabinets
Always Use Radio Sets
with 32

The Choice of Explorers

MODEL 32
\$145
(Less Accessories)

Over thousands of miles of barren waste the delicately sensitive Atwater Kent Model 32 brings news of the outside world to isolated explorers.

When life itself depends upon radio communication, you may be sure that these men, trained in a technical knowledge of radio, will select the best receiver that money can buy—price is no object.

This same dependability and great range, this super-sensitiveness and exacting selectivity will be your joy and comfort through the long watches of the night when you go "radio exploring."

Try one out tonight in your own home; your nearest dealer will be glad to make the arrangements, without the slightest obligation to you.

RAY THOMAS, INC.

Atwater Kent Distributor

1248 South Hope St.

Westmore 6334

Los Angeles, Calif.

Broadcasting Stations by Meters (Continued)

| Wave Length Meters | Call Signal | Fre- quency Kilo- cycles | Location of Station | Power in Watts | Dial Settings | | | Remarks |
|--------------------------|----------------|-----------------------------------|----------------------|----------------------|---------------|---|---|---------|
| | | | | | 1 | 2 | 3 | |
| 366 | WDAF | 820 | Kansas City, Mo. | 1000 | | | | |
| 366 | WHB | 820 | Kansas City, Mo. | 500 | | | | |
| 365 | WBRL | 821 | Pilton, N. H. | 500 | | | | |
| 363 | WKBW | 827 | Buffalo, N. Y. | 1000 | | | | |
| 361 | KGO | 830 | Oakland, Calif. | 5000 | | | | |
| 361 | WHN | 830 | New York, N. Y. | 500 | | | | |
| 361 | WKBS | 830 | Galesburg, Ill. | 200 | | | | |
| 360 | KSOO | 833 | Sioux Falls, S. D. | 100 | | | | |
| 360 | WEW | 833 | St. Louis, Mo. | 1000 | | | | |
| 360 | WKBM | 833 | Youngstown, Ohio | 25 | | | | |
| 360 | WQAO | 833 | Cliffside, N. J. | 500 | | | | |
| 357 | KRLD | 840 | Dallas, Texas | 500 | | | | |
| 353 | WJAD | 850 | Waco, Tex. | 500 | | | | |
| 353 | WWJ | 850 | Detroit, Mich. | 1000 | | | | |
| 351 | WCGU | 855 | Lakewood, N. J. | 500 | | | | |
| 350 | WNJ | 860 | Newark, N. J. | 500 | | | | |
| 349 | KOB | 860 | State College, N. M. | 1000 | | | | |
| 349 | KWSC | 860 | Pullman, Wash. | 500 | | | | |
| 349 | WFEI | 860 | Boston, Mass. | 500 | | | | |
| 345 | WCBD | 870 | Zion, Ill. | 5000 | | | | |
| 345 | WLS | 870 | Crete, Ill. | 5000 | | | | |
| 341 | KFAB | 880 | Lincoln, Nebr. | 1000 | | | | |
| 341 | KSAC | 880 | Manhattan, Kans. | 500 | | | | |
| 341 | WKAQ | 880 | San Juan, P. R. | 500 | | | | |
| 341 | WMCA | 880 | Hoboken, N. J. | 500 | | | | |
| 340 | WJBW | 880 | New Orleans, La. | 30 | | | | |
| 337 | KFMX | 890 | Northfield, Minn. | 50 | | | | |
| 337 | KNX | 890 | Los Angeles, Calif. | 1000 | | | | |
| 337 | WCAL | 890 | Northfield, Minn. | 500 | | | | |
| 337 | WCAM | 890 | Camden, N. J. | 250 | | | | |
| 337 | WJAX | 890 | Jacksonville, Fla. | 1000 | | | | |

IF YOU CAN'T BRING THEM IN SEE PAGE 4

“—remarkably good!”



That is the judgment, without exception, of radio experts and enthusiasts who have examined and tested these two fine units

They mean *better reception*. Both have a great deal to do with finer tone-quality. You owe it to your own enjoyment of radio, to know the facts about these fine-quality accessories.

**ALL-AMERICAN
Reproducer**

For purity of tone this handsome product is outstanding among reproducers. It combines ingeniously all advantages of good cone-type reproducers—and the improved quality provided by a special sounding-board and strutting chamber. A highly sensitive unit which reproduces voice and instruments naturally and clearly. Perfect uniformity is maintained over the entire musical range, whether amplifiers are turned to full volume, or down to a whisper. Absolute freedom from “inherent pitch” prevents low throaty tones or twangy nasal effects.

Price \$27.50

**ALL-AMERICAN
Constant-B**

An attractive compact unit of silent efficiency—insures a dependable supply of uniform plate current. Five output taps: negative, +45, +67, +90, and a power tube tap adapt “Constant-B” to all requirements. A “Detector” control provides voltage variation between 10 to 60 volts. An “Amplifier” control allows a variation of 10 to 120 volts on the intermediate tap, without affecting the 30 volts supplied to first audio stage. A High-low switch adapts “Constant-B” to receivers of various current requirements.

Price \$39.00 Complete with Raytheon Tube

New 1927 Radio Key Book

Learn more about the fundamentals of radio. This new 48-page book contains an interesting analysis of radio in language anyone can understand—also complete constructional details of the leading types of circuits. Sent for 10c (coin or stamps) to pay for postage and mailing.

ALL-AMERICAN RADIO CORPORATION

4219 Belmont Avenue, Chicago, Illinois

OWNING AND OPERATING STATION WENR • 246 METERS

Broadcasting Stations by Meters (Continued)

| Wave Length Meters | Call Signal | Frequency Kilocycles | Location of Station | Power in Watts | Dial Settings | | | Remarks |
|--------------------|-------------|----------------------|----------------------|----------------|---------------|---|---|---------|
| | | | | | 1 | 2 | 3 | |
| 335 | KFBK | 885 | Sacramento, Calif. | 100 | | | | |
| 334 | WBRS | 761 | Brooklyn, N. Y. | 100 | | | | |
| 333 | KGBZ | 900 | Yonk. Neb. | 100 | | | | |
| 333 | KQW | 900 | San Jose, Calif. | 300 | | | | |
| 323 | KTNT | 900 | Muscantine, Iowa | 1000 | | | | |
| 323 | WBZA | 900 | Boston, Mass. | 350 | | | | |
| 321 | KGCB | 905 | Oklahoma City, Okla. | 50 | | | | |
| 321 | WBZ | 905 | Springfield, Mass. | 5000 | | | | |
| 320 | WJAZ | 910 | Chicago, Ill. | 1500 | | | | |
| 320 | WFRL | 1280 | Brooklyn, N. Y. | 100 | | | | |
| 320 | WSAI | 920 | Cincinnati, Ohio | 5000 | | | | |
| 322 | KOA | 930 | Denver, Colo. | 5000 | | | | |
| 322 | WBNY | 1420 | New York, N. Y. | 500 | | | | |
| 313 | KOPN | 940 | Furthaud, Ore. | 1000 | | | | |
| 319 | WGB | 940 | Buffalo, N. Y. | 750 | | | | |
| 319 | WSMB | 940 | New Orleans, La. | 500 | | | | |
| 317 | KPSN | 950 | Pasadena, Calif. | 1000 | | | | |
| 316 | KFDM | 950 | Beaumont, Tex. | 500 | | | | |
| 316 | KFWM | 950 | Oakland, Calif. | 250 | | | | |
| 316 | WAHC | 950 | Richmond Hill, N. Y. | 500 | | | | |
| 316 | WBMC | 950 | Berrien Sprgs. Mich. | 500 | | | | |
| 316 | WGBS | 950 | New York, N. Y. | 500 | | | | |
| 316 | WGES | 950 | Chicago, Ill. | 500 | | | | |
| 315 | WSBT | 953 | So. Bend, Ind. | 250 | | | | |
| 313 | KSBA | 959 | Kennewood, La. | 1000 | | | | |
| 313 | KWKH | 950 | Shreveport, La. | 1000 | | | | |
| 309 | KDKA | 970 | E. Pittsburgh, Pa. | 10000 | | | | |
| 309 | WKBO | 970 | Jersey City, N. J. | 200 | | | | |
| 306 | KOIL | 980 | Council Bluffs, Iowa | 500 | | | | |
| 306 | KFDY | 980 | Brookings, S. Dak. | 500 | | | | |
| 306 | KOMO | 980 | Seattle, Wash. | 1000 | | | | |

IF YOU CAN'T BRING THEM IN SEE PAGE 4

STROMBERG-CARLSON

1. Your purchase price has been invested—not lost. It represents the truest form of permanent Radio value. Stromberg-Carlson prices never have been reduced and are **GUARANTEED** not to be reduced.
2. Fidelity in reproduction never attained even in the "above the average" receiver. A Stromberg-Carlson covers 7 octaves of undistorted reception. The average is $3\frac{1}{2}$ octaves.
3. A **WRITTEN** guarantee of satisfaction for one year. Stromberg-Carlson receivers are built for 50 years service, however, the same as their telephone equipment.
4. Selectivity sufficient for the most exacting Distance Fan, but not with a sacrifice of tone quality in cutting the side bands of the broadcasting station so necessary in perfect reproduction.
5. Power—plenty of it in reserve when you need it and under perfect control.
6. Freedom from the petty ailments of ordinary receivers. Stromberg-Carlson construction throughout insures uninterrupted performance over a period of years.
7. No yearly models nor radical changes in design. No Stromberg-Carlson receiver will become obsolete—its value will remain constant with its performance.
8. A Stromberg-Carlson will outlast several ordinary receivers.
9. Ask the man who has a Stromberg-Carlson.

WESTERN RADIO INC.

Broadcasting Stations by Meters (Continued)

| Wave Length Meters | Call Signal | Fre- quency Kilo- cycles | Location of Station | Power in Watts | Dial Settings | | | Remarks |
|-----------------------|----------------|-----------------------------------|------------------------|----------------------|---------------|---|---|---------|
| | | | | | 1 | 2 | 3 | |
| 306 | WJAR | 980 | Providence, R. I. | 500 | | | | |
| 303 | KTAB | 990 | Oakland, Calif. | 500 | | | | |
| 303 | WGN | 990 | Chicago, Ill. | 1000 | | | | |
| 303 | WL1B | 990 | Elgin, Ill. | 4000 | | | | |
| 303 | WMSG | 990 | New York City | 500 | | | | |
| 300 | KFQD | 999 | Anchorage, Alaska | 100 | | | | |
| 300 | KSL | 1000 | Salt Lake City, Utah | 1000 | | | | |
| 300 | KI'OA | 1000 | Fayetteville, Ark. | 750 | | | | |
| 300 | WPG | 1000 | Atlantic City, N. J. | 5000 | | | | |
| 300 | WRES | 1000 | Wollston, Mass. | 100 | | | | |
| 297 | KPRC | 1010 | Houston, Tex. | 500 | | | | |
| 297 | WDXL | 1010 | Detroit, Mich. | 250 | | | | |
| 296 | KWOR | 1000 | Cedar Rapids, Iowa | 100 | | | | |
| 295 | WARS | 1016 | Brooklyn, N. Y. | 500 | | | | |
| 295 | WEPS | 1016 | Gloucester, Mass. | 100 | | | | |
| 294 | KTBI | 1020 | Los Angeles, Calif. | 750 | | | | |
| 294 | WAH1 | 1020 | Columbus, Ohio | 750 | | | | |
| 294 | WEAO | 1020 | Columbus, Ohio | 750 | | | | |
| 294 | WMAL | 1010 | Washington, D. C. | 100 | | | | |
| 294 | WOCB | 1021 | Orlando, Fla. | 50 | | | | |
| 291 | KFWC | 1030 | San Bernardino, Calif. | 50 | | | | |
| 288 | KFKX | 1040 | Hastings, Nebr. | 5000 | | | | |
| 288 | WJBV | 1040 | Woodhaven, N. Y. | 100 | | | | |
| 288 | WMRI | 1040 | Chicago, Ill. | 500 | | | | |
| 286 | WKAR | 1050 | E. Lansing, Mich. | 1000 | | | | |
| 286 | WQAM | 1050 | Miami, Fla. | 750 | | | | |
| 286 | WREO | 1050 | Lansing, Mich. | 500 | | | | |
| 285 | KOWW | 1052 | Walla Walla, Wash. | 500 | | | | |
| 285 | WIC1 | 1052 | Bridgeport, Conn. | 500 | | | | |
| 285 | WKBQ | 1052 | New York City | 10 | | | | |
| 283 | KGBW | 1060 | Joplin, Mo. | 250 | | | | |

IF YOU CAN'T BRING THEM IN SEE PAGE 4

The RADIO SUPPLY CO.

Is the Pacific Coast Warehouse for all the new things in Radio—that give you more distance, better tone, easier control and makes your set a real pleasure.

We Have Ready for You:

New Kits for All Sizes and Types of Sets.

Many Makes of Good Battery Eliminators.

Combination "A" Battery and Trickle Charger Power Units.

Trickle Chargers to Give You an "A" Power Unit.

A Fine Assortment of Real Cone Speakers.

The Best in Vernier Dials for Sharp Tuning.

All of the New Heavy Audio Transformers.

Five, Six, Seven and Eight Wire Cables for Battery Leads.

Kits and Parts for the Hi-Q and Equamatic Sets.

All Types of Meters for Testing Your Circuits.

A Big Assortment of Real SLF Condensers.

And Hundreds of Other Devices That Can Be Added to Your Set That Will Make It a Hobby and a Pleasure to You.

Give Your Order to Your Dealer and Have Him Come Here For It

"YOU'LL FIND IT HERE"

DEALERS:

Park Your Car Next Door at Our Expense

RADIO SUPPLY CO.

Wholesale

VAndike 6063

920 S. Broadway Open Evening Till Nine

Los Angeles

Send for Our Latest Catalogue

Broadcasting Stations by Meters (Continued)

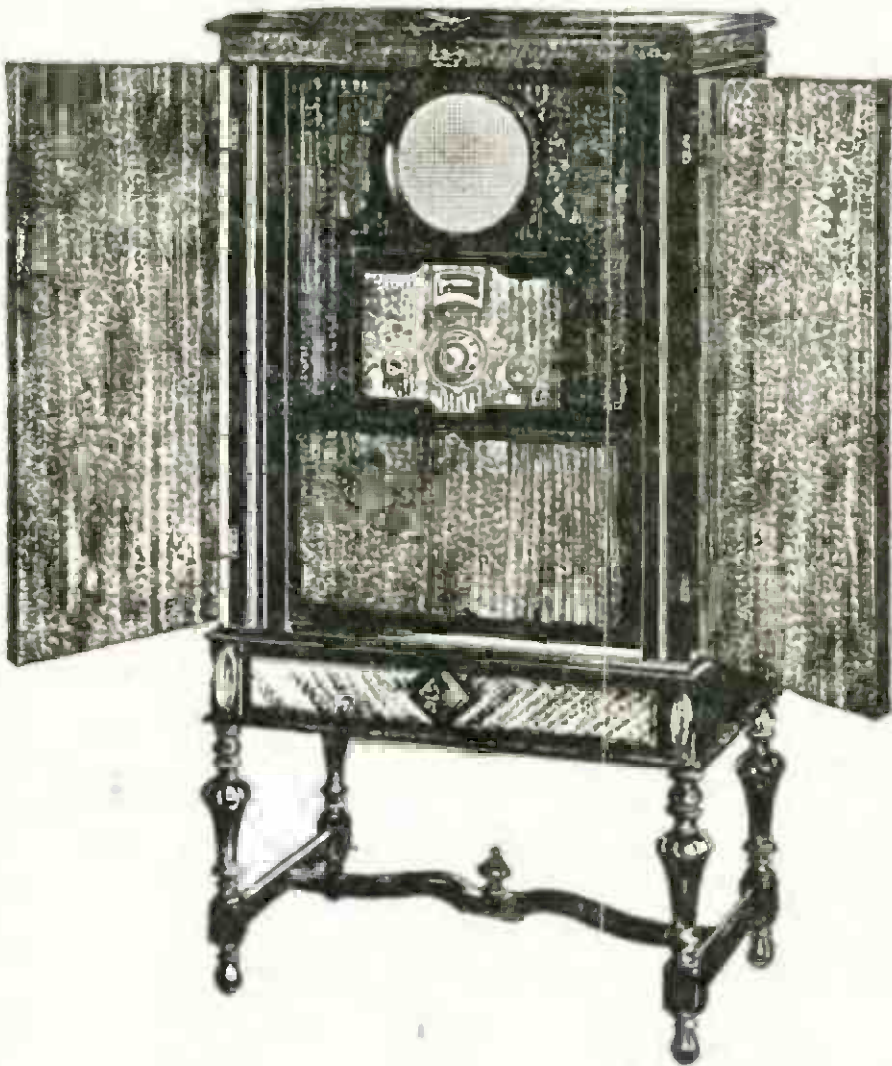
| Wave Length Meters | Call Signal | Frequency Kilo-cycles | Location of Station | Power in Watts | Dial Settings | | | Remarks |
|--------------------|-------------|-----------------------|--------------------------|----------------|---------------|---|---|---------|
| | | | | | 1 | 2 | 3 | |
| 283 | ESMR | 1080 | Santa Maria, Calif. | 100 | | | | |
| 283 | WEBB | 1060 | Joliet, Ill. | 150 | | | | |
| 283 | WOAN | 1060 | Lawrenceburg, Tenn. | 500 | | | | |
| 283 | WSM | 1060 | Nashville, Tenn. | 1000 | | | | |
| 280 | KFAU | 1080 | Boise, Idaho | 750 | | | | |
| 280 | KGCA | 1070 | Decorah, Iowa | 15 | | | | |
| 280 | KMOX | 1070 | St. Louis, Mo. | 1500 | | | | |
| 280 | KOAG | 1070 | Corvallis, Ore. | 500 | | | | |
| 280 | WNAH | 1070 | Boston, Mass. | 100 | | | | |
| 280 | WKHJ | 1070 | St. Petersburg, Fla. | 250 | | | | |
| 278 | KFJM | 1080 | Grand Forks, N. Dak. | 100 | | | | |
| 278 | KGY | 1080 | Lacey, Wash. | 50 | | | | |
| 278 | KUSD | 1080 | Vermillion, S. Dak. | 100 | | | | |
| 278 | KWWG | 1080 | Brownsville, Tex. | 500 | | | | |
| 274 | KWCR | 1080 | Cedar Rapids, Iowa | 500 | | | | |
| 278 | WAAF | 1080 | Chicago, Ill. | 250 | | | | |
| 278 | WARO | 1080 | Rochester, N. Y. | 100 | | | | |
| 278 | WCAU | 1080 | Philadelphia, Pa. | 500 | | | | |
| 278 | WDZ | 1080 | Tuscola, Ill. | 100 | | | | |
| 278 | WFBG | 1080 | Altoona, Pa. | 100 | | | | |
| 278 | WHAM | 1080 | Rochester, N. Y. | 100 | | | | |
| 278 | WHDI | 1080 | Minneapolis, Minn. | 500 | | | | |
| 278 | WGBU | 1080 | Tilford by-the-Sea, Fla. | 500 | | | | |
| 278 | WLB | 1080 | Minneapolis, Minn. | 20 | | | | |
| 278 | WLBL | 1080 | Stevens Point, Wis. | 500 | | | | |
| 278 | WMAN | 1080 | Columbus, Ohio | 50 | | | | |
| 278 | WOQ | 1080 | Kansas City, Mo. | 1000 | | | | |
| 278 | WRBC | 1080 | Valparaiso, Ind. | 500 | | | | |
| 275 | KFBR | 1090 | Havra, Mont. | 50 | | | | |
| 275 | KFDD | 1080 | Boise, Idaho | 50 | | | | |
| 275 | KFKU | 1080 | Lawrence, Kans. | 500 | | | | |

IF YOU CAN'T BRING THEM IN SEE PAGE 4

AMERICAN RADIO CO.
 108 East 8th St.
LOS ANGELES CALIFORNIA

We Stake Our Reputation On The Magnavox! The Single Dial Control Set That Has No Peer. Distance—Selectivity—Tone—Ease of Operation, All At Your Command With This Set.

DEMONSTRATIONS DAILY UNTIL 8 P.M.



FIVE MODELS \$75 AND UP

MAGNAVOX

Pomona Store—152 W. Second St.

Phone 1576

Broadcasting Stations by Meters (Continued)

| Wave Length Meters | Call Signal | Frequency Kilo-cycles | Location of Station | Power in Watts | Dial Settings | | | Remarks |
|--------------------|-------------|-----------------------|----------------------|----------------|---------------|---|---|---------|
| | | | | | 1 | 2 | 3 | |
| 275 | KFSG | 1090 | Los Angeles, Calif. | 500 | | | | |
| 275 | KQV | 1090 | Pittsburgh, Pa. | 500 | | | | |
| 275 | WAFD | 1090 | Port Huron, Mich. | 500 | | | | |
| 275 | WBAK | 1090 | Harrisburg, Pa. | 500 | | | | |
| 275 | WBT | 1090 | Charlotte, N. C. | 250 | | | | |
| 275 | WCAC | 1090 | Mansfield, Conn. | 500 | | | | |
| 275 | WCAO | 1090 | Baltimore, Md. | 100 | | | | |
| 275 | WEAU | 1090 | Sioux City, Iowa | 250 | | | | |
| 275 | WFAV | 1090 | Lincoln, Nebr. | 500 | | | | |
| 275 | WHAD | 1090 | Milwaukee, Wis. | 500 | | | | |
| 275 | WHAR | 1090 | Atlantic City, N. J. | 500 | | | | |
| 275 | WJAS | 1090 | Pittsburgh, Pa. | 500 | | | | |
| 275 | WKY | 1090 | Oklahoma City, Okla. | 100 | | | | |
| 275 | WMAC | 1090 | Cazenovia, N. Y. | 100 | | | | |
| 275 | WABZ | 1090 | Canton, N. Y. | 50 | | | | |
| 275 | WAGM | 1330 | Royal Oak, Mich. | 50 | | | | |
| 275 | WOCL | 1090 | Jamestown, N. Y. | 15 | | | | |
| 275 | WORD | 1090 | Batavia, Ill. | 5000 | | | | |
| 275 | WPAK | 1090 | Fargo, N. Dak. | 50 | | | | |
| 275 | WSMK | 1090 | Dayton, Ohio | 500 | | | | |
| 275 | WSWS | 1090 | Batavia, Ill. | 1000 | | | | |
| 275 | WWL | 1090 | New Orleans, La. | 100 | | | | |
| 273 | KFAD | 1100 | Phoenix, Ariz. | 100 | | | | |
| 273 | KFIO | 1100 | Spokane, Wash. | 100 | | | | |
| 273 | KFIZ | 1100 | Fond du Lac, Wis. | 100 | | | | |
| 273 | KFKA | 1100 | Greeley, Colo. | 50 | | | | |
| 273 | KFLZ | 1100 | Atlantic, Iowa | 10 | | | | |
| 273 | KICK | 1100 | Anita, Iowa | 100 | | | | |
| 273 | WBAA | 1100 | W. Lafayette, Ind. | 250 | | | | |
| 273 | WDAE | 1100 | Tampa, Fla. | 250 | | | | |
| 273 | WEBJ | 1100 | New York, N. Y. | 500 | | | | |

IF YOU CAN'T BRING THEM IN SEE PAGE 4

Dubilier

Accurate Condensers for all Purposes

**"B" Block
Filter
Condenser**



**13½ Mfds.
\$9.50**

Thousands will make their own "B" Eliminators this fall and winter.

Guaranteed voltage and rated capacity is absolutely essential to make your "B" unit a success.

Dubilier Filter Condensers will meet the most exacting tests. In units of .1 mfd. to 13½ mfd.

**Build your own "B" Eliminator and be sure of
constant perfect reception.**

Manufacturers of the famous Micadons. Used by all the prominent Radio Manufacturers, Air Mail Service, and all the branches of the U. S. Government.

DUBILIER COND. & RADIO CORP.

Pacific Coast Office
532 San Fernando Bldg.
Los Angeles, Cal.

Main Office and Factory
4377 Bronx Blvd.
New York

Broadcasting Stations by Meters (Continued)

| Wave Length Meters | Call Signal | Fre- quency Kilo- cycles | Location of Station | Power in Watts | Dial Settings | | | Remarks |
|--------------------------|----------------|-----------------------------------|-----------------------|----------------------|---------------|---|---|---------|
| | | | | | 1 | 2 | 3 | |
| 273 | WFAM | 1100 | St. Cloud, Minn. | 10 | | | | |
| 273 | WHK | 1100 | Cleveland, Ohio | 1000 | | | | |
| 273 | WPCH | 1100 | New York City | 500 | | | | |
| 273 | WRM | 1100 | Urbana, Ill. | 500 | | | | |
| 273 | WSEF | 1100 | St. Louis, Mo. | 250 | | | | |
| 273 | KFPY | 1100 | Spokane, Wash. | 250 | | | | |
| 270 | KGU | 1110 | Honolulu, Hawaii | 500 | | | | |
| 270 | WDBE | 1110 | Atlanta, Ga. | 100 | | | | |
| 270 | WKBE | 1110 | Webster, Mass. | 100 | | | | |
| 270 | KZKZ | 1110 | Manila, P. I. | 100 | | | | |
| 270 | WBAO | 1110 | Decatur, Ill. | 100 | | | | |
| 270 | WGHP | 1110 | Detroit, Mich. | 1500 | | | | |
| 270 | WGST | 1110 | Atlanta, Ga. | 500 | | | | |
| 270 | WJAG | 1110 | Norfolk, Nebr. | 200 | | | | |
| 270 | WJBL | 1110 | Decatur, Ill. | 500 | | | | |
| 270 | WJBY | 1110 | Gadsden, Ala. | 20 | | | | |
| 270 | WJWB | 1110 | New Orleans, La. | 100 | | | | |
| 270 | WKBE | 1110 | Webster, Mass. | 100 | | | | |
| 270 | WOI | 1110 | Ames, Iowa | 750 | | | | |
| 270 | WOWL | 1110 | New Orleans, La. | 10 | | | | |
| 270 | WRK | 1110 | Hamilton, Ohio | 100 | | | | |
| 270 | WTAW | 1110 | College Station, Tex. | 500 | | | | |
| 269 | WGM | 1110 | Jeanette, Pa. | 10 | | | | |
| 268 | KFEQ | 1120 | Oak, Nebr. | 500 | | | | |
| 268 | KFH | 1120 | Wichita, Kans. | 500 | | | | |
| 268 | KFRC | 1120 | San Francisco, Calif. | 500 | | | | |
| 268 | WBBY | 1120 | Charleston, S. C. | 10 | | | | |
| 268 | WDAH | 1120 | El Paso, Texas | 50 | | | | |
| 268 | WDRC | 1120 | New Haven, Conn. | 500 | | | | |
| 268 | WEBW | 1120 | Beloit, Wis. | 500 | | | | |
| 268 | WFBM | 1120 | Indianapolis, Ind. | 250 | | | | |

IF YOU CAN'T BRING THEM IN SEE PAGE 4

Mohawk Radio

One Dial

"SENECA"—The Mohawk Unit drawer for use in phonographs or individual cabinets. \$62.50.

The **"CHEROKEE"**—Mohawk six-tube, one dial, shielded table receiver, at \$70.00.



Chippewa

"WINONA"—Mohawk one dial, six-tube, shielded radio with "B" battery compartments. Walnut hand rubbed piano finish, at \$85.00.

"CHIPPEWA" — Mohawk one dial, six-tube, shielded radio console, with built-in speaker and self-contained battery compartments—two-tone, at \$120.00.

"PONTIAC" — Mohawk one dial, six-tube, shielded radio console, built-in loud speaker, self-contained battery compartment, Walnut hand rubbed piano finish, burl Walnut front, drop-lip with invisible hinges, at \$150.00.

"GENEVA" — Mohawk one dial, six-tube, shielded radio console. Built-in loud speaker in dome of console, battery compartment, dome full piano hinged, front burl Walnut, inlaid, rich rich Walnut hand rubbed piano finish, at \$195.00.

"POCAHONTAS"—Mohawk one dial, six-tube, shielded Super De Luxe Radio Console. Built-in loud speaker, battery compartment, exterior in Colonial design, burl Walnut, rich two-tone Walnut hand rubbed piano finish, at \$310.00.

COOK-NICHOLS CO.

Wholesale Electrical and Radio Supplies

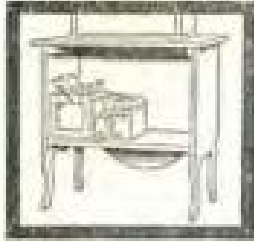
482 South Fair Oaks Avenue
PASADENA, CALIF.

411 South San Pedro Street
LOS ANGELES, CALIF.

Broadcasting Stations by Meters (Continued)

| Wave Length Meters | Call Signal | Pre- quency Kilo- cycles | Location of Station | Power in Watts | Dial Settings | | | Remarks |
|--------------------|-------------|-----------------------------------|----------------------|----------------------|---------------|---|---|---------|
| | | | | | 1 | 2 | 3 | |
| 268 | WJAM | 1120 | Cedar Rapids, Iowa | 100 | | | | |
| 268 | WJBO | 1120 | New Orleans, La. | 100 | | | | |
| 268 | WNOX | 1120 | Knoxville, Tenn. | 500 | | | | |
| 268 | WRAX | 1120 | Cloucestor, N. J. | 500 | | | | |
| 268 | WSAX | 1120 | Portable | 100 | | | | |
| 268 | WSBC | 1120 | Chicago, Ill. | 1000 | | | | |
| 273 | KIPY | 1100 | Spokane, Wash. | 250 | | | | |
| 266 | KLZ | 1130 | Denver, Colo. | 500 | | | | |
| 266 | WBCN | 1130 | Chicago, Ill. | 500 | | | | |
| 266 | WCAH | 1130 | Columbus, Ohio | 500 | | | | |
| 266 | WENR | 1130 | Chicago, Ill. | 1000 | | | | |
| 266 | WMAK | 1130 | Lockport, N. Y. | 500 | | | | |
| 266 | WTAB | 1130 | Fall River, Mass. | 100 | | | | |
| 266 | WWI | 1130 | Dearborn, Mich. | 500 | | | | |
| 265 | WDEL | 1130 | Wilmington, Del. | 100 | | | | |
| 265 | WGHB | 1130 | Clearwater, Fla. | 500 | | | | |
| 265 | WKBP | 1131 | Battle Creek, Mich. | 50 | | | | |
| 263 | KFJR | 1140 | Portland, Ore. | 100 | | | | |
| 263 | KFMW | 1140 | Houghton, Mich. | 50 | | | | |
| 263 | KFUT | 1140 | Salt Lake City, Utah | 100 | | | | |
| 263 | KGCM | 1140 | San Antonio, Texas | 10 | | | | |
| 263 | KTBR | 1140 | Portland, Ore. | 50 | | | | |
| 263 | KTI'E | 1140 | Houston, Texas | 5 | | | | |
| 263 | WAAM | 1140 | Newark, N. J. | 500 | | | | |
| 263 | WARR | 1140 | Toledo, Ohio | 50 | | | | |
| 263 | WCAD | 1140 | Canton, N. Y. | 250 | | | | |
| 263 | WBPI | 1140 | Newark, N. J. | 500 | | | | |
| 263 | WCAR | 1140 | San Antonio, Tex. | 500 | | | | |
| 263 | WCBE | 1140 | New Orleans, La. | 5 | | | | |
| 263 | WDAG | 1140 | Amarillo, Tex. | 100 | | | | |
| 263 | WDGY | 1140 | Minneapolis, Minn. | 500 | | | | |

IF YOU CAN'T BRING THEM IN SEE PAGE 4



Rear view shows shows large compartment with ample space for batteries, battery charger, or battery eliminator, which are entirely concealed from view. Back is open for ventilation of batteries.



(Pat. Applied For)

Model 200, with 22-inch Cone Loudspeaker

This Windsor Cone Loudspeaker Console is equipped with a 22-inch Windsor Cone Loudspeaker. Its top is 30 in. x 17 in. and is 29 in. high. The battery shelf provides ample space for batteries, charger, battery eliminator and other equipment. Beautifully finished in either Mahogany or Walnut.



Above is shown the Cone Loudspeaker, with its sounding board, which is quickly and easily removable, allowing instant access to all batteries, battery charger, battery eliminator, or other equipment and wiring.

Model 200

\$35

Console with Cone Loudspeaker Ready for Set and Batteries

A Revelation in Radio Reproduction



Model 210
22-inch Cone Loudspeaker with sounding board and easel back
\$18⁰⁰

(Pat. applied for)

beauty, just as it entered the microphone.

• • •

This 22-inch Windsor Cone Loudspeaker, with its sounding board, will reproduce the softest crooning lullaby in a softly lighted room, or the full throated march music of a band in an auditorium—both with perfect fidelity of sound and tone. The Windsor Cone Loudspeaker Console is the greatest value in the world of radio. When compared with the average cost of cone-type loudspeakers of even similar size, the cost of the complete Windsor—cone loudspeaker, sounding board, and console—is amazingly low.

• • •

The Windsor Cone and Horn Loudspeakers, combined with attractive pieces of furniture in many models, are being demonstrated by recognized dealers everywhere. Go to your dealer today and examine this astonishing new Cone Loudspeaker Console. If he happens not to have one, write to us and we will tell you the name of the nearest store at which you can see and hear one.

• • •

NOTE TO DEALERS

Write or wire today for details of the highly profitable Windsor selling franchise.

At last—a cone loudspeaker that reproduces all the tones as they are broadcast. From the deep voiced tuba of an orchestra to the softest note of a vocal solo—every tone—every sound is reproduced in all its

As a piece of furniture, the Windsor Cone Loudspeaker Console is of such manifest high quality and attractive design as to be a welcome addition to any home. Finished in Mahogany or Walnut.

WINDSOR FURNITURE CO.

World's Largest Manufacturers and Originators of Loudspeaker Consoles

1420 Carroll Avenue, Chicago, Illinois

Los Angeles Branch: 917 Maple Avenue

R. D. 18

WINDSOR FURNITURE COMPANY.
Electrical Department,
917 Maple Ave., Los Angeles.

Send me FINDER and without obligation circulars of the Windsor line of Cone and Horn Loudspeakers combined with pieces of furniture, and name of nearest dealer.

Name.....
Address.....
City.....State.....
Dealer's Name.....

Broadcasting Stations by Meters (Continued)

| Wave Length Meters | Call Signal | Frequency Kilo-cycles | Location of Station | Power in Watts | Dial Settings | | | Remarks |
|--------------------|-------------|-----------------------|----------------------|----------------|---------------|---|---|---------|
| | | | | | 1 | 2 | 3 | |
| 263 | WEBZ | 1140 | Savannah, Ga. | 50 | | | | |
| 263 | WRAV | 1140 | Yellow Springs, Ohio | 100 | | | | |
| 263 | WSDA | 1140 | New York, N. Y. | 250 | | | | |
| 263 | WVAO | 1140 | Houghton, Mich. | 250 | | | | |
| 261 | KFJF | 1150 | Oklahoma City, Okla. | 500 | | | | |
| 261 | KFMR | 1150 | Sioux City, Iowa | 100 | | | | |
| 261 | KSEI | 1150 | Pocatello, Idaho | 500 | | | | |
| 261 | KFQA | 1150 | St. Louis, Mo. | 100 | | | | |
| 261 | KWTG | 1150 | Santa Ana, Calif. | 15 | | | | |
| 261 | WABQ | 1150 | Haverford, Pa. | 100 | | | | |
| 261 | WARC | 1150 | Medford, Mass. | 100 | | | | |
| 261 | WDAY | 1150 | Fargo, N. Dak. | 50 | | | | |
| 261 | WEAN | 1150 | N. Plainfield, N. J. | 250 | | | | |
| 261 | WKAF | 1150 | Milwaukee, Wis. | 500 | | | | |
| 261 | WMAZ | 1150 | Macon, Ga. | 500 | | | | |
| 261 | WPSC | 1150 | State College, Pa. | 500 | | | | |
| 261 | WSKE | 1150 | Bay City, Mich. | 100 | | | | |
| 261 | WSSH | 1150 | Boston, Mass. | 100 | | | | |
| 261 | WTAR | 1150 | Norfolk, Va. | 100 | | | | |
| 261 | WTAZ | 1150 | Lambertville, N. J. | 15 | | | | |
| 260 | WJBX | 1160 | Osterville, Mass. | 100 | | | | |
| 259 | WHFC | 1160 | Chicago, Ill. | 150 | | | | |
| 259 | WKJC | 1160 | Lancaster, Pa. | 50 | | | | |
| 258 | KFPW | 1160 | Cartersville, Mo. | 20 | | | | |
| 258 | KFUL | 1160 | Galveston, Tex. | 50 | | | | |
| 258 | KOCH | 1160 | Omaha, Nebr. | 250 | | | | |
| 258 | WAAD | 1160 | Cincinnati, Ohio | 25 | | | | |
| 258 | WADC | 1160 | Akron, Ohio | 500 | | | | |
| 258 | WCMA | 1160 | Culver, Ind. | 500 | | | | |
| 258 | WHEC | 1160 | Rochester, N. Y. | 100 | | | | |
| 258 | WIL | 1160 | St. Louis, Mo. | 250 | | | | |

IF YOU CAN'T BRING THEM IN SEE PAGE 4

RADIO - AUTO BATTERIES

"One and Two-Year Guarantee"

A CALIFORNIA PRODUCT

QUALITY AND SERVICE
OUR STANDARD

Mail or Phone Orders Will Receive Prompt Attention

Western Storage Battery Company

Manufacturers of

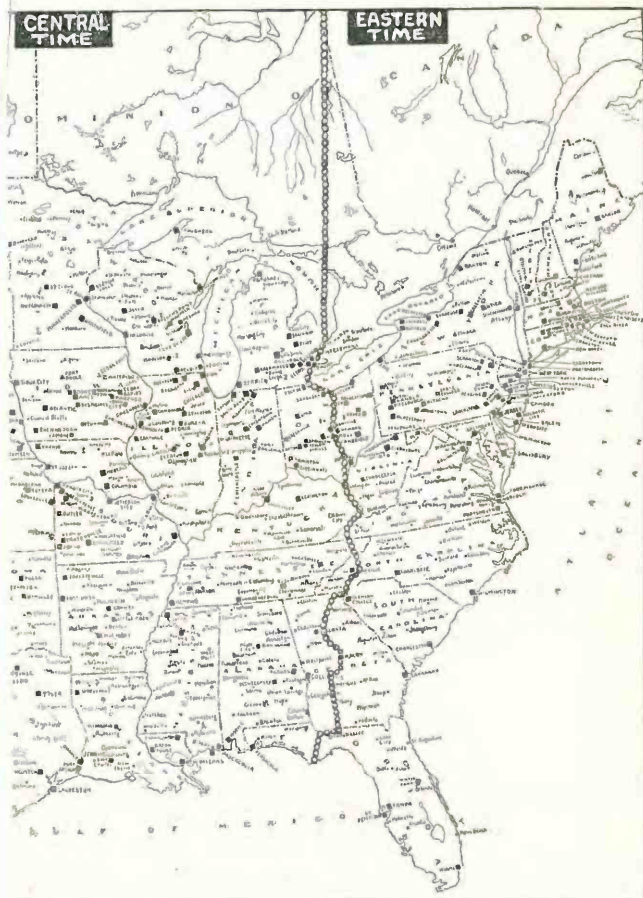
WET and JELLY Batteries of Any Size or Type

Factory and General Offices

140 W. 16th St.

Phone WEStmore 5742

Los Angeles, Calif.



Dealer, Mail this Coupon to your Stewart-Warner Distributor

Installation Receipt for Stewart-Warner Radio

RECEIVED in good condition Date 11-16-26 The following stations have been tuned, with the results as indicated opposite each:

| Stewart-Warner Radio Model | Serial No. | Call Letters of Station | City | State |
|----------------------------|------------|-------------------------|---------------------|-------|
| 325 | 1511 | KMOX | St. Louis, Mo. | Mo. |
| | | WHD | Rocky Mount, N.C. | N.C. |
| | | KMO | Chicago, Ill. | Ill. |
| | | KMJI | Denver, Colo. | Colo. |
| | | KRZ | Portland, Ore. | Ore. |
| | | K4W | Portland, Ore. | Ore. |
| | | WOOB | Chattanooga, Tenn. | Tenn. |
| | | KMO | Jacoma, Wash. | Wash. |
| | | WOOV | Omaha, Neb. | Neb. |
| | | W3BO | Chicago, Ill. | Ill. |
| | | K3XX | Headings, Pa. | Pa. |
| | | K3QB | Fort Worth, Tex. | Tex. |
| | | W5YB | Schmiedady, N.H. | N.H. |
| | | KVQB | Birmingham, Ala. | Ala. |
| | | WQAC | Minneapolis, Minn. | Minn. |
| | | WCCO | New York, N.Y. | N.Y. |
| | | WBAZ | Joplin, Mo. | Mo. |
| | | WOS | Jefferson City, Mo. | Mo. |
| | | WBAZ | Kansas City, Mo. | Mo. |
| | | WOC | Nagasaki, Japan | Japan |
| | | WQAC | San Antonio, Tex. | Tex. |

Stations of Purchaser: Ellen Jensen
10964 Santa Anita
R.A. San Calif

Name of Stewart-Warner Dealer: Ch. Drexler and Son
 Address: Outsforth Phone NA 118
 Signature of Dealer's Representative: Phetson & Son
and all locals

A satisfactory installation has been made at the address above with the Stewart-Warner Equipment, including:

- 1 Stewart-Warner Aerial Wire
- 1 Stewart-Warner Ground Clamp
- 100 Amp. Vesta Grade Battery
- 1 Set of 10' Battery Lead
- Blue Vitrol Ground

I have been instructed by the Stewart-Warner Salesman in tuning, care of the complete equipment, etc. (inserting of batteries, etc.)

Signature of Purchaser: _____
 Date: _____

With the issuing of this new call book most readers will want to try for as many "DX" stations as possible. Let us recommend the model 325 Stewart-Warner receiver for this purpose.

Its efficient 5-tube U. S. Navy receiving circuit has proved to be one of the best hook-ups ever designed for distance reception.

The two installation receipts reproduced herewith, signed by the purchasers of Stewart-Warner receivers, show the stations brought in in one evening when the receivers were installed by our dealers.

Any Stewart-Warner dealer will gladly demonstrate Matched Unit Radio in your own home. The name of the dealer nearest you appears in the center of page of Radio Doings each week.

Stewart-Warner Products Service Station

{ Wholesale Distributors Stewart-Warner Radio }

1366 South Figueroa Street - LOS ANGELES

"DX" Logs like these are brought in with Stewart-Warner Receivers!



Dealer, Mail this Coupon to your Stewart-Warner Distributor

Installation Receipt for Stewart-Warner Radio

RECEIVED in good condition Date 4-28-26 The following stations have been tuned, with the results as indicated opposite each:

| Stewart-Warner Radio Model | Serial No. | Call Letters of Station | City | State |
|----------------------------|------------|-------------------------|---------------------|-------|
| 325 | 1587 | KFSD | San Diego, Cal. | Cal. |
| | | KLZ | Denver, Colo. | Colo. |
| | | KFBU | Lorrain, Colo. | Colo. |
| | | KOW | Portland, Ore. | Ore. |
| | | KOL | Council Bluffs, Ia. | Ia. |
| | | KOA | Denver, Colo. | Colo. |
| | | KOWW | Walla Walla, Wash. | Wash. |
| | | KLY | Caklond, Col. | Colo. |
| | | KJR | Seattle, Wash. | Wash. |
| | | KHQ | Spokane, Wash. | Wash. |
| | | KPO | San Francisco, Cal. | Cal. |
| | | KFWO | Catalina Island | Cal. |
| | | KPRC | Houston, Tex. | Tex. |
| | | KQW | San Jose, Cal. | Cal. |

Stations of Purchaser: W. A. Stalup
 Sign: 442 G. 107 St. on 12 A.
 County: LA State: Calif

Name of Stewart-Warner Dealer: Barrera-Cookright
 Address: 5845 Sunser Blvd. Phone No. LA 2525
 Signature of Purchaser: W. A. Stalup and All Local Stations

DEPARTMENT OF COMMERCE. BUREAU OF NAVIGATION. RADIO DIRECTORY

AIR-LINE DISTANCES

Table listing radio stations and their locations, including call letters and frequencies. Locations include Alaska, California, Florida, and various states across the United States.

IN STATUTE MILES

Table listing radio stations and their locations, including call letters and frequencies. Locations include Alaska, California, Florida, and various states across the United States.

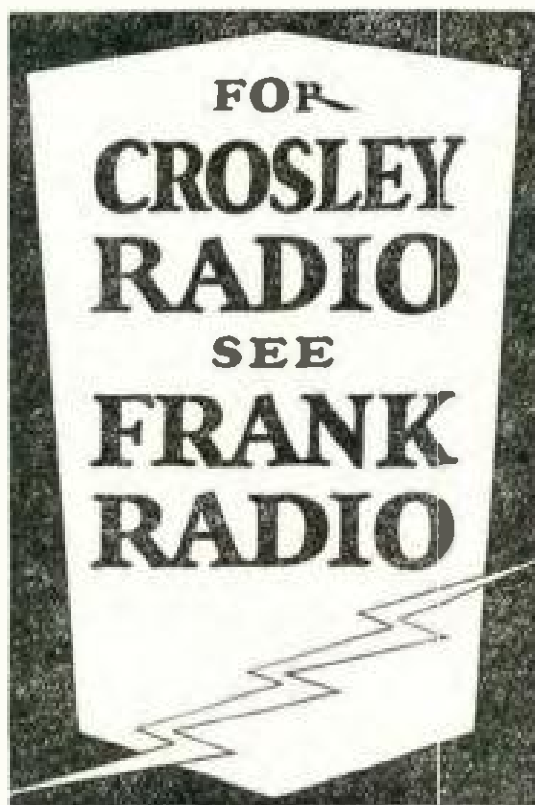
Supplement to the List of Commercial and Government Radio Stations of the United States

Broadcasting Stations by Meters (Continued)

| Wave Length Meters | Call Signal | Fre- quency Kilo- cycles | Location of Station | Power in Watts | Dial Settings | | | Remarks |
|-----------------------|----------------|-----------------------------------|-----------------------|----------------------|---------------|---|---|---------|
| | | | | | 1 | 2 | 3 | |
| 258 | WLTS | 1160 | Chicago, Ill. | 100 | | | | |
| 258 | WNAL | 1160 | Omaha, Nebr. | 50 | | | | |
| 258 | WPCC | 1160 | Chicago, Ill. | 250 | | | | |
| 258 | WWRL | 1160 | Woodside, N. Y. | 100 | | | | |
| 256 | KFIQ | 1170 | Yakima, Wash. | 100 | | | | |
| 256 | KFUS | 1170 | Oakland, Calif. | 50 | | | | |
| 256 | KRE | 1170 | Berkeley, Calif. | 100 | | | | |
| 256 | WASH | 1170 | Grand Rapids, Mich. | 500 | | | | |
| 256 | WEAX | 1170 | Wilkes-Barre, Pa. | 100 | | | | |
| 256 | WDOD | 1170 | Chattanooga, Tenn. | 500 | | | | |
| 256 | WHBP | 1170 | Johnstown, Pa. | 100 | | | | |
| 256 | WKBZ | 1170 | Ludington, Mich. | 15 | | | | |
| 256 | WMBC | 1170 | Detroit, Mich. | 100 | | | | |
| 256 | WRAK | 1170 | Escanaba, Mich. | 100 | | | | |
| 256 | WRHF | 1170 | Washington, D. C. | 50 | | | | |
| 256 | WRVA | 1170 | Richmond, Va. | 1000 | | | | |
| 254 | KFEL | 1180 | Denver, Colo. | 250 | | | | |
| 254 | KFJX | 1180 | Cedar Falls, Iowa | 50 | | | | |
| 254 | KFJZ | 1180 | Fort Worth, Tex. | 50 | | | | |
| 254 | KFLR | 1180 | Albuquerque, N. M. | 100 | | | | |
| 254 | KFWH | 1180 | Eureka, Calif. | 100 | | | | |
| 254 | KGDA | 1180 | Del Rapids, S. D. | 15 | | | | |
| 254 | WABC | 1180 | Asheville, N. C. | 20 | | | | |
| 254 | WCAJ | 1180 | University Pl., Nebr. | 500 | | | | |
| 254 | WCBA | 1180 | Allentown, Pa. | 15 | | | | |
| 254 | WEAI | 1180 | Ithaca, N. Y. | 500 | | | | |
| 254 | WFBR | 1180 | Baltimore, Md. | 100 | | | | |
| 254 | WFBZ | 1180 | Galesburg, Ill. | 20 | | | | |
| 254 | WHBC | 1180 | Canton, Ohio | 10 | | | | |
| 254 | WIAS | 1180 | Burlington, Iowa | 100 | | | | |
| 254 | WJAK | 1180 | Greentown, Ind. | 50 | | | | |

IF YOU CAN'T BRING THEM IN SEE PAGE 4

Los Angeles' Leading Crosley Dealer



*Downtown Headquarters for Crosley Sets,
Speakers—and Real Service*

*We stock the best of battery eliminators—
carry a full line of radio supplies, but—if the
article isn't right, you won't find it for sale
here.*

Factory Franchised Crosley Dealer

Frank Radio Co.

• 715 ½ So. Main St.
Los Angeles

Broadcasting Stations by Meters (Continued)

| Wave Length Meters | Call Signal | Fre- quency Kilo- cycles | Location of Station | Power in Watts | Dial Settings | | | Remarks |
|-----------------------|----------------|-----------------------------------|-----------------------|----------------------|---------------|---|---|---------|
| | | | | | 1 | 2 | 3 | |
| 254 | WJBB | 1180 | St. Petersburg, Fla. | 10 | | | | |
| 254 | WNAD | 1180 | Norman, Okla. | 500 | | | | |
| 254 | WOMT | 1180 | Manitowac, Wis. | 50 | | | | |
| 254 | WREC | 1180 | Coolwater, Miss. | 10 | | | | |
| 254 | WSAR | 1180 | Fall River, Mass. | 100 | | | | |
| 254 | WTAQ | 1180 | Eau Claire, Wis. | 100 | | | | |
| 252 | KFBC | 1160 | Portland, Ore. | 50 | | | | |
| 252 | KFHA | 1100 | Gunnison, Colo. | 50 | | | | |
| 252 | KFOY | 1170 | St. Paul, Minn. | 50 | | | | |
| 252 | KFPI | 1190 | Dublin, Tex. | 15 | | | | |
| 252 | KFWB | 1190 | Hollywood, Calif. | 500 | | | | |
| 252 | KGBR | 1190 | Brookings, S. D. | 15 | | | | |
| 252 | KOCW | 1190 | Chickasha, Okla. | 500 | | | | |
| 252 | KWIC | 1190 | Le Mars, Iowa | 50 | | | | |
| 252 | WFBI | 1190 | Syracuse, N. Y. | 100 | | | | |
| 252 | WGCP | 1190 | Newark, N. J. | 500 | | | | |
| 252 | WCFB | 1190 | Tullahoma, Tenn. | 10 | | | | |
| 252 | WKBI | 1190 | Monroe, Mich. | 15 | | | | |
| 252 | WKBT | 1190 | New Orleans, La. | 50 | | | | |
| 252 | WRCO | 1190 | Raleigh, N. C. | 100 | | | | |
| 252 | WRHM | 1190 | Minneapolis, Minn. | 50 | | | | |
| 252 | WSRO | 1190 | Hamilton, Ohio | 100 | | | | |
| 252 | WTAL | 1190 | Toledo, Ohio | 10 | | | | |
| 250 | KFVY | 1200 | Abuquerque, N. M. | 10 | | | | |
| 250 | KFWI | 1200 | San Francisco, Calif. | 50 | | | | |
| 250 | KMO | 1200 | Tacoma, Wash. | 100 | | | | |
| 250 | KXIB | 1200 | Manila, P. I. | 100 | | | | |
| 250 | WAGS | 1199 | Summerville, Mass. | 5 | | | | |
| 250 | WBBC | 1200 | Brooklyn, N. Y. | 100 | | | | |
| 250 | WCAX | 1200 | Burlington, Vt. | 30 | | | | |
| 250 | WFBC | 1200 | Knoxville, Tenn. | 50 | | | | |

IF YOU CAN'T BRING THEM IN SEE PAGE 4

RADIO FOR LESS!

Standard Radio

Parts

Cabinets

Chassis

Sets



RADIO MANUFACTURERS SUPPLY CO.
1000 So. Broadway
LOS ANGELES

ON THE CORNER of 10th & BROADWAY

Broadcasting Stations by Meters (Continued)

| Wave Length Meters | Call Signal | Frequency Kilo-cycles | Location of Station | Power in Watts | Dial Settings | | | Remarks |
|--------------------|-------------|-----------------------|----------------------|----------------|---------------|---|---|---------|
| | | | | | 1 | 2 | 3 | |
| 150 | WHBA | 1200 | Oil City, Pa. | 10 | | | | |
| 250 | WHBY | 1200 | West De Pere, Wis. | 50 | | | | |
| 250 | WKBE | 1200 | La Crosse, Wis. | 500 | | | | |
| 250 | WIAD | 1200 | Philadelphia, Pa. | 100 | | | | |
| 250 | WLAL | 1200 | Tulsa, Okla. | 100 | | | | |
| 250 | WMBB | 1200 | Chicago, Ill. | 300 | | | | |
| 300 | WLAP | 1200 | Louisville, Ky. | 100 | | | | |
| 250 | WNAT | 1200 | Philadelphia, Pa. | 100 | | | | |
| 250 | WQAN | 1200 | Scranton, Pa. | 100 | | | | |
| 40 | KGEX | 560 | St. Joseph, Mo. | 30 | | | | |
| 248 | KFIF | 1210 | Portland, Ore. | 100 | | | | |
| 248 | KFJB | 1210 | Marshalltown, Iowa | 10 | | | | |
| 248 | KFOX | 1210 | Omaha, Nebr. | 100 | | | | |
| 248 | KFRB | 1210 | Beeville, Texas | 250 | | | | |
| 248 | KFYR | 1210 | Bismark, N. D. | 10 | | | | |
| 248 | KWG | 1210 | Stockton, Calif. | 50 | | | | |
| 248 | WBRC | 1210 | Birmingham, Ala. | 50 | | | | |
| 248 | WCSS | 1210 | Springfield, Ohio | 100 | | | | |
| 248 | WGAL | 1210 | Lancaster, Pa. | 10 | | | | |
| 248 | WIOD | 1210 | Miami Beach, Fla. | 1000 | | | | |
| 248 | WMAY | 1210 | St. Louis, Mo. | 100 | | | | |
| 248 | WNBE | 1210 | New Bedford, Mass. | 250 | | | | |
| 248 | WSAV | 1210 | Houston, Texas | 100 | | | | |
| 246 | KDYL | 1220 | Salt Lake City, Utah | 50 | | | | |
| 246 | KFJI | 1220 | Astoria, Ore. | 10 | | | | |
| 246 | KFJY | 1220 | Fort Dodge, Iowa | 50 | | | | |
| 246 | KFSD | 1220 | San Diego, Calif. | 1000 | | | | |
| 246 | WABX | 1220 | Mt. Clemens, Mich. | 500 | | | | |
| 246 | WCAZ | 1220 | Carthage, Ill. | 50 | | | | |
| 246 | WEBD | 1220 | Anderson, Ind. | 10 | | | | |
| 246 | WIBR | 1220 | Wairton, W. Va. | 50 | | | | |

IF YOU CAN'T BRING THEM IN SEE PAGE 4

Broadcasting Stations by Meters (Continued)

| Wave Length Meters | Call Signal | Frequency Kilocycles | Location of Station | Power in Watts | Dial Settings | | | Remarks |
|--------------------|-------------|----------------------|-------------------------|----------------|---------------|---|---|---------|
| | | | | | 1 | 2 | 3 | |
| 246 | WQAE | 1220 | Springfield, Vt. | 50 | | | | |
| 246 | WRR | 1220 | Dallas, Texas | 500 | | | | |
| 246 | WSOE | 1220 | Milwaukee, Wis. | 500 | | | | |
| 244 | KFVR | 1230 | Denver, Colo. | 50 | | | | |
| 244 | KGAR | 1230 | Tucson, Ariz. | 100 | | | | |
| 244 | KUOM | 1230 | Missoula, Mont. | 500 | | | | |
| 244 | WATT | 1230 | Boston, Mass. | 100 | | | | |
| 244 | WAMD | 1230 | Minneapolis, Minn. | 500 | | | | |
| 244 | WBBR | 1230 | Buffalo, N. Y. | 100 | | | | |
| 244 | WGBB | 1230 | Freeport, N. Y. | 100 | | | | |
| 244 | WGEO | 1180 | Memphis, Tenn. | 100 | | | | |
| 244 | WKBF | 1229 | Indianapolis, Ind. | 100 | | | | |
| 244 | WNAX | 1230 | Yankton, S. Dak. | 100 | | | | |
| 244 | WRAM | 1230 | Galesburg, Ill. | 100 | | | | |
| 244 | WSAZ | 1230 | Pomeroy, Ohio | 50 | | | | |
| 242 | KFPM | 1240 | Greenville, Texas | 10 | | | | |
| 242 | KFXH | 1240 | El Paso, Texas | 50 | | | | |
| 242 | KFXH | 1240 | El Paso, Texas | 50 | | | | |
| 242 | KLS | 1240 | Oakland, Calif. | 250 | | | | |
| 242 | WABY | 1240 | Philadelphia, Pa. | 50 | | | | |
| 242 | WCBH | 1240 | Oxford, Miss. | 50 | | | | |
| 242 | WCBS | 1229 | Boston, Mass. | 250 | | | | |
| 242 | WEBC | 1240 | Superior, Wis. | 100 | | | | |
| 242 | WEBK | 1240 | Grand Rapids, Mich. | 100 | | | | |
| 242 | KFFP | 1240 | Moberly, Mo. | 50 | | | | |
| 242 | WHOG | 1240 | Huntington, Ind. | 15 | | | | |
| 242 | WOOD | 1240 | Grand Rapids, Mich. | 500 | | | | |
| 240 | KFHL | 1250 | Oskaloosa, Iowa | 10 | | | | |
| 240 | KFLX | 1250 | Galveston, Texas | 10 | | | | |
| 240 | KFUM | 1250 | Colorado Springs, Colo. | 100 | | | | |
| 240 | KFVE | 1250 | St. Louis, Mo. | 5000 | | | | |

IF YOU CAN'T BRING THEM IN SEE PAGE 4

Broadcasting Stations by Meters (Continued)

| Wave Length Meters | Call Signal | Frequency Kilocycles | Location of Station | Power in Watts | Dial Settings | | | Remarks |
|--------------------|-------------|----------------------|----------------------|----------------|---------------|---|---|---------|
| | | | | | 1 | 2 | 3 | |
| 240 | KFVI | 1250 | Houston, Texas | 10 | | | | |
| 240 | KGCG | 1250 | Newark, Ark. | 100 | | | | |
| 240 | KGCI | 1250 | San Antonio, Texas | 15 | | | | |
| 240 | KGCX | 1249 | Vida, Mont. | 10 | | | | |
| 240 | KZM | 1250 | Oakland, Calif. | 100 | | | | |
| 240 | WARI | 1250 | Bangor, Maine | 100 | | | | |
| 240 | WCAT | 1250 | Rapid City, S. Dak. | 50 | | | | |
| 240 | WDBO | 1250 | Winter Park, Fla. | 500 | | | | |
| 240 | WGBI | 1250 | Scranton, Pa. | 10 | | | | |
| 240 | WOAX | 1250 | Trenton, N. J. | 500 | | | | |
| 240 | WSMH | 1250 | Owasso, Mich. | 50 | | | | |
| 240 | WTIC | 1250 | New York City | 50 | | | | |
| 238 | KFCB | 1260 | Phoenix, Ariz. | 100 | | | | |
| 238 | KFWU | 1260 | Pineville, La. | 100 | | | | |
| 238 | KFWU | 1260 | Pineville, La. | 100 | | | | |
| 238 | KFYI | 1260 | Houston, Texas | 10 | | | | |
| 238 | WBBP | 1260 | Petoskey, Mich. | 200 | | | | |
| 238 | WBBP | 1260 | Petoskey, Mich. | 200 | | | | |
| 238 | KNRC | 1260 | Santa Monica, Calif. | 1000 | | | | |
| 238 | WHBN | 1260 | St. Petersburg, Fla. | 10 | | | | |
| 238 | WIIT | 1260 | Deerfield, Ill. | 2500 | | | | |
| 238 | WRAW | 1260 | Redding, Pa. | 10 | | | | |
| 236 | KFDX | 1270 | Shreveport, La. | 500 | | | | |
| 236 | KFLI | 1270 | San Benito, Texas | 10 | | | | |
| 236 | KFOO | 1270 | Salt Lake City, Utah | 250 | | | | |
| 236 | KFVG | 1270 | Independence, Kans. | 15 | | | | |
| 236 | KWKC | 1270 | Kansas City, Mo. | 100 | | | | |
| 236 | WBAW | 1270 | Nashville, Tenn. | 100 | | | | |
| 236 | WBOQ | 1270 | Richmond Hill, N. Y. | 100 | | | | |
| 236 | WFBJ | 1270 | Collegeville, Minn. | 100 | | | | |
| 236 | WGBF | 1270 | Evansville, Ind. | 500 | | | | |

IF YOU CAN'T BRING THEM IN SEE PAGE 4

Broadcasting Stations by Meters (Continued)

| Wave Length Meters | Call Signal | Frequency Kilo-cycles | Location of Station | Power in Watts | Dial Settings | | | Remarks |
|--------------------|-------------|-----------------------|-----------------------|----------------|---------------|---|---|---------|
| | | | | | 1 | 2 | 3 | |
| 236 | WGMU | 1270 | Richmond Hill, N. J. | 100 | | | | |
| 236 | WIBA | 1270 | Madison, Wis. | 100 | | | | |
| 236 | WKRV | 1270 | Brookville, Ind. | 75 | | | | |
| 236 | WRMU | 1270 | New York City | 100 | | | | |
| 236 | WTAB | 1270 | Carthage, Ill. | 50 | | | | |
| 236 | WTAD | 1270 | Carthage, Ill. | 50 | | | | |
| 235 | WAAT | 1276 | Hoboken, N. J. | 10 | | | | |
| 235 | WRAH | 1276 | Providence, R. I. | 150 | | | | |
| 234 | KFUP | 1280 | Denver, Colo. | 50 | | | | |
| 234 | KGRS | 1280 | Amarillo, Texas | 100 | | | | |
| 234 | KJBS | 1280 | San Francisco, Calif. | 5 | | | | |
| 234 | KMJ | 1280 | Fresno, Calif. | 50 | | | | |
| 234 | WCWK | 1280 | Fort Wayne, Ind. | 250 | | | | |
| 234 | WIRX | 1280 | Utica, N. Y. | 150 | | | | |
| 234 | WJBC | 1280 | La Salle, Ill. | 100 | | | | |
| 234 | WGBX | 1280 | Orono, Me. | 500 | | | | |
| 233 | KFEY | 1290 | Kellogg, Idaho | 500 | | | | |
| 233 | KFON | 1290 | Long Beach, Calif. | 750 | | | | |
| 233 | WDBZ | 1290 | Kingston, N. Y. | 10 | | | | |
| 233 | WHBQ | 1290 | Memphis, Tenn. | 50 | | | | |
| 233 | WJRK | 1290 | Ypsilanti, Mich. | 10 | | | | |
| 233 | WOKO | 1290 | Peekskill, N. Y. | 50 | | | | |
| 232 | KGDF | 1290 | Barrett, Minn. | 50 | | | | |
| 231 | KDLR | 1300 | Devils Lake, N. Dak. | 5 | | | | |
| 231 | KFOT | 1300 | Wichita, Kans. | 50 | | | | |
| 231 | KFDZ | 1300 | Minneapolis, Minn. | 10 | | | | |
| 231 | KGCL | 1300 | Seattle, Wash. | 10 | | | | |
| 231 | KUT | 1300 | Austin, Texas | 500 | | | | |
| 231 | WBRE | 1300 | Wilkesbarre, Pa. | 100 | | | | |
| 231 | WCLO | 1300 | Camp Lake, Wis. | 50 | | | | |
| 231 | WIBZ | 1300 | Montgomery, Ala. | 10 | | | | |

IF YOU CAN'T BRING THEM IN SEE PAGE 4

Broadcasting Stations by Meters (Continued)

| Wave Length Meters | Call Signal | Frequency Kilo-cycles | Location of Station | Power in Watts | Dial Settings | | | Remarks |
|--------------------|-------------|-----------------------|---------------------|----------------|---------------|---|---|---------|
| | | | | | 1 | 2 | 3 | |
| 231 | WIBF | 1300 | Brooklyn, N. Y. | 15 | | | | |
| 231 | KFPR | 1300 | Los Angeles, Calif. | 500 | | | | |
| 231 | KFQU | 1300 | Holy City, Calif. | 100 | | | | |
| 231 | WBRE | 1300 | Wilkes Barre, Pa. | 100 | | | | |
| 231 | WCLO | 1300 | Camp Lake, Wis. | 50 | | | | |
| 231 | WHBG | 1300 | Harrisburg, Pa. | 25 | | | | |
| 231 | WIBZ | 1300 | Montgomery, Ala. | 10 | | | | |
| 231 | WTAX | 1300 | Streator, Ill. | 50 | | | | |
| 229 | KFLV | 1310 | Rockford, Ill. | 100 | | | | |
| 229 | KLIB | 1310 | Ketchikan, Alaska | 500 | | | | |
| 229 | KPPC | 1310 | Pasadena, Calif. | 50 | | | | |
| 229 | WAIT | 1310 | Taunton, Mass. | 10 | | | | |
| 229 | WBBL | 1310 | Richmond, Va. | 100 | | | | |
| 229 | WCBM | 1310 | Baltimore, Md. | 50 | | | | |
| 229 | WDBJ | 1310 | Roanoke, Va. | 50 | | | | |
| 229 | WFGE | 1310 | Pawtucket, R. I. | 100 | | | | |
| 229 | WGBR | 1310 | Marshfield, Wis. | 10 | | | | |
| 229 | WSAJ | 1310 | Grove City, Pa. | 250 | | | | |
| 229 | WSAN | 1310 | Allentown, Pa. | 100 | | | | |
| 227 | KFVN | 1320 | Fairmont, Minn. | 50 | | | | |
| 227 | KGBS | 1321 | Seattle, Wash. | 1000 | | | | |
| 227 | WDBK | 1320 | Cleveland, Ohio | 100 | | | | |
| 227 | WJBR | 1320 | Omro, Wis. | 50 | | | | |
| 227 | WNRJ | 1320 | Jamaica, N. Y. | 5 | | | | |
| 227 | WOWO | 1320 | Fort Wayne, Ind. | 500 | | | | |
| 226 | KFOR | 1330 | Burlingame, Calif. | 50 | | | | |
| 226 | KFGO | 1330 | Boone, Iowa | 10 | | | | |
| 226 | KFKZ | 1330 | Kirkville, Mo. | 10 | | | | |
| 226 | KFTU | 1330 | Juneau, Alaska | 10 | | | | |
| 226 | KFOR | 1330 | Dayid City, Nebr. | 100 | | | | |
| 226 | KFOZ | 1330 | Hollywood, Calif. | 50 | | | | |

IF YOU CAN'T BRING THEM IN SEE PAGE 4

Broadcasting Stations by Meters (Continued)

| Wave Length Meters | Call Signal | Fre- quency Kilo- cycles | Location of Station | Power in Watts | Dial Settings | | | Remarks |
|--------------------------|----------------|-----------------------------------|---------------------|----------------------|---------------|---|---|---------|
| | | | | | 1 | 2 | 3 | |
| 226 | WBBM | 1330 | Chicago, Ill. | 1500 | | | | |
| 226 | WDAI | 1330 | Nashville, Tenn. | 150 | | | | |
| 226 | WBL | 1330 | U. S. (Portable) | 100 | | | | |
| 226 | WBDQ | 1330 | Harrisburg, Ill. | 10 | | | | |
| 226 | WFBE | 1330 | Seymour, Ind. | 10 | | | | |
| 226 | WIBO | 1330 | Chicago, Ill. | 1000 | | | | |
| 225 | WKBC | 1333 | Birmingham, Ala. | 50 | | | | |
| 225 | WKBR | 1333 | Auburn, N. Y. | 100 | | | | |
| 224 | KFBL | 1340 | Everett, Wash. | 100 | | | | |
| 224 | KFQP | 1340 | Iowa City, Iowa | 10 | | | | |
| 224 | KFUR | 1340 | Ogden, Utah | 50 | | | | |
| 224 | KFVS | 1340 | Cape Girardeau, Mo. | 50 | | | | |
| 224 | WBMS | 1340 | North Bergen, N. J. | 10 | | | | |
| 224 | WKAU | 1340 | Laconia, N. H. | 50 | | | | |
| 224 | WLBC | 1340 | Muncie, Ind. | 50 | | | | |
| 224 | WNRC | 1340 | Greensboro, N. C. | 10 | | | | |
| 224 | WRAF | 1340 | Ladorte, Ind. | 100 | | | | |
| 224 | KFUP | 1340 | Denver, Colo. | 50 | | | | |
| 222 | KZRQ | 1350 | Manila, P. I. | 500 | | | | |
| 222 | WBBW | 1350 | Norfolk, Va. | 50 | | | | |
| 222 | WBES | 1350 | Tacoma Park, Md. | 100 | | | | |
| 222 | WCOA | 1350 | Pensacola, Fla. | 500 | | | | |
| 222 | WHBD | 1350 | Bellefontaine, Ohio | 20 | | | | |
| 222 | WHBF | 1350 | Rock Island, Ill. | 100 | | | | |
| 222 | WIRG | 1350 | Elkins Park, Pa. | 50 | | | | |
| 222 | WIBU | 1350 | Poynette, Wis. | 20 | | | | |
| 220 | KFUU | 1360 | Oakland, Calif. | 50 | | | | |
| 220 | KRAC | 1363 | Shreveport, La. | 50 | | | | |
| 220 | WIBW | 1360 | Logansport, Ind. | 100 | | | | |
| 220 | WKBI | 1360 | Chicago, Ill. | 50 | | | | |
| 220 | WKBY | 1363 | Danville, Pa. | 50 | | | | |

IF YOU CAN'T BRING THEM IN SEE PAGE 4

Broadcasting Stations by Meters (Continued)

| Wave Length Meters | Call Signal | Frequency, Kilocycles | Location of Station | Power in Watts | Dial Settings | | | Remarks |
|--------------------|-------------|-----------------------|----------------------|----------------|---------------|---|---|---------|
| | | | | | 1 | 2 | 3 | |
| 220 | WQAA | 1360 | Parkesburg, Pa. | 500 | | | | |
| 210 | KFJC | 1370 | Junction City, Kans | 10 | | | | |
| 219 | KFRW | 1370 | Olympia, Wash. | 50 | | | | |
| 219 | WHBU | 1370 | Anderson, Ind. | 10 | | | | |
| 219 | WIBI | 1370 | Flushing, N. Y. | 50 | | | | |
| 219 | WJBI | 1370 | Red Bank, N. J. | 250 | | | | |
| 219 | WSVS | 1370 | Buffalo, N. Y. | 50 | | | | |
| 217 | KFAF | 1380 | San Jose, Calif. | 50 | | | | |
| 217 | KGDW | 1380 | Stockton, Calif. | 5 | | | | |
| 217 | WFKB | 1380 | Chicago, Ill. | 500 | | | | |
| 217 | WOK | 1380 | Homewood, Ill. | 5000 | | | | |
| 216 | KFQW | 1390 | North Bend, Wash. | 50 | | | | |
| 216 | KFXJ | 1390 | Colorado (Portable) | 15 | | | | |
| 216 | WRBZ | 1390 | Chicago, Ill. | 50 | | | | |
| 216 | WHBL | 1390 | Logansport, Ind. | 50 | | | | |
| 216 | WHBM | 1390 | Chicago, Ill. | 20 | | | | |
| 216 | WHBW | 1390 | Philadelphia, Pa. | 100 | | | | |
| 216 | WIRJ | 1390 | Chicago, Ill. | 50 | | | | |
| 216 | WIRM | 1390 | Chicago, Ill. | 10 | | | | |
| 216 | WKRG | 1390 | Chicago, Ill. | 100 | | | | |
| 216 | WPRC | 1390 | Harrisburg, Pa. | 100 | | | | |
| 216 | WRST | 1390 | Bay Shore, N. Y. | 250 | | | | |
| 216 | KPJM | 1315 | Prescott, Ariz | 15 | | | | |
| 214 | KFWF | 1400 | St. Louis, Mo. | 250 | | | | |
| 214 | KFXR | 1400 | Oklahoma City, Okla. | 15 | | | | |
| 214 | KFYF | 1400 | Oxnard, Calif | 10 | | | | |
| 214 | WCLB | 1400 | Joliet, Ill. | 150 | | | | |
| 213 | KFWV | 1410 | Portland, Ore. | 100 | | | | |
| 211 | KFWO | 1420 | Avalon, Calif. | 250 | | | | |
| 211 | WJBU | 1420 | Lewisburg Pa. | 100 | | | | |
| 211 | W'BF | 1420 | Kansas City | 25 | | | | |

IF YOU CAN'T BRING THEM IN SEE PAGE 4

Broadcasting Stations by Meters (Continued)

| Wave Length Meters | Call Signal | Frequency Kilo-cycles | Location of Station | Power in W atts. | Dial Settings | | | Remarks |
|--------------------|-------------|-----------------------|-----------------------|------------------|---------------|---|---|---------|
| | | | | | 1 | 2 | 3 | |
| 210 | KFYO | 1430 | Texarkana, Texas | 10 | | | | |
| 210 | KGCN | 1428 | Concordia, Kans. | 50 | | | | |
| 210 | WVBR | 1430 | Providence, R. I. | 100 | | | | |
| 210 | WCWS | 1430 | Providence, R. I. | 100 | | | | |
| 210 | WIBH | 1430 | New Bedford, Mass. | 50 | | | | |
| 210 | WKBA | 1430 | Chicago, Ill. | 200 | | | | |
| 207 | KOTT | 1450 | San Francisco, Calif. | 50 | | | | |
| 207 | WARW | 1450 | Wooster Ohio | 50 | | | | |
| 207 | WJRA | 1450 | Joliet, Ill. | 50 | | | | |
| 206 | KFVD | 1460 | Venice, Calif. | 500 | | | | |
| 206 | KFXD | 1460 | Logan Utah | 10 | | | | |
| 206 | KFXV | 1460 | Flagstaff, Ariz. | 50 | | | | |
| 206 | WFDQ | 1460 | Buffalo, N. Y. | 250 | | | | |
| 205 | WFRI | 1460 | Brooklyn, N. Y. | 100 | | | | |
| 204 | WARB | 1470 | Harrisburg, Pa. | 10 | | | | |
| 203 | WEHS | 1460 | Evanston, Ill. | 10 | | | | |
| 203 | KGBV | 1450 | Chelby, Neb. | 10 | | | | |
| 203 | KODI | 1480 | Cresco, Iowa | 10 | | | | |
| 203 | KFXB | 1480 | Big Bear Lake, Calif. | 500 | | | | |
| 202 | WIBB | 1480 | Elizabeth, N. J. | 10 | | | | |

NEW STATIONS

| | | | | | | | | |
|--|--|--|--|--|--|--|--|--|
| | | | | | | | | |
| | | | | | | | | |
| | | | | | | | | |
| | | | | | | | | |
| | | | | | | | | |
| | | | | | | | | |
| | | | | | | | | |
| | | | | | | | | |
| | | | | | | | | |
| | | | | | | | | |

IF YOU CAN'T BRING THEM IN SEE PAGE 4

Complete List of All Broadcast Stations in the U. S. Corrected and Revised to December 31, 1926

| Signal Call | Location of Station | Owner of Station | Power (watts) | Wave length | Frequency (kilo-cycles) |
|-------------|--|---|---------------|-------------|-------------------------|
| *KDKA... | East Pittsburgh, Pa. | Westinghouse Elec. & M. Co. | 10,000 | 309 | 970 |
| KDLR... | Devil's Lake, N. D. | Radio Electric Co. | 5 | 231 | 1,300 |
| KDYL... | Salt Lake City, Utah | Intermountain Broad. Corp. | 50 | 246 | 1,220 |
| KFAB... | Lincoln, Neb. | Nebraska Buick Auto Co. | 1,000 | 341 | 880 |
| KFAD... | Phoenix, Ariz. | Electric Equip. Co. | 100 | 373 | 1,100 |
| KFAF... | San Jose, Calif. | Alfred E. Fowler | 50 | 217 | 1,360 |
| KFAU... | Boise, Idaho | Boise High School | 750 | 280 | 1,070 |
| KFBB... | Havre, Mont. | F. A. Buttrey & Co. | 50 | 276 | 1,090 |
| KFBC... | San Diego, Calif., 6038 Cliff Place | W. K. Azbill | 100 | 280 | 789 |
| KFBK... | Sacramento, Calif. | Kimball-Upson Co. | 100 | 335 | 560 |
| KFBL... | Everett, Wash. | Lease Brothers | 100 | 224 | 1,340 |
| KFBS... | Trinidad, Colo. | School District No. 1 | 15 | 235 | 1,260 |
| KFBU... | Laramie, Wyo. | St. Matthews Cathedral | 1,000 | 376 | 500 |
| KFCB... | Phoenix, Ariz. | Nielsen Radio Supply Co. | 100 | 230 | 1,280 |
| KFDD... | Boise, Idaho | St. Michaels Cathedral | 50 | 275 | 1,090 |
| KFDM... | Beaumont, Tex. | Magnolia Petroleum Co. | 500 | 316 | 850 |
| KFDX... | Shreveport, La. | First Baptist Church | 500 | 236 | 1,270 |
| KFDY... | Brookings, S. Dak. | South Dakota State College | 500 | 306 | 980 |
| KFDZ... | Minneapolis, Minn. | Harry O. Iverson | 10 | 281 | 1,300 |
| KFEC... | Portland, Oreg. | Meier & Frank Co. | 50 | 252 | 1,160 |
| KFEL... | Denver, Colo. | Eugene P. O'Fallon, Inc. | 250 | 254 | 1,180 |
| KFEQ... | Oak, Nebr. | J. S. Scroggin | 500 | 268 | 1,120 |
| KFEY... | Kellogg, Idaho | Bunker Hill & Sullivan Mng. & Concentrating Co. | 10 | 233 | 1,240 |
| KFFP... | Moberly, Mo. | First Baptist Church | 50 | 242 | 1,240 |
| KFGQ... | Boone, Iowa | Crary Hardware Co. | 10 | 229 | 1,330 |
| KFH... | Wichita, Kan. | Hotel Lassen | 500 | 268 | 1,120 |
| KFHA... | Cunison, Colo. | Western St. College of Colorado | 50 | 252 | 1,190 |
| KFHL... | Oskaloosa, Iowa | Penn College | 10 | 240 | 1,250 |
| KFI... | Los Angeles, Calif. | Earl C. Anthony, Inc. | 5,000 | 467 | 642 |
| KFIF... | Portland, Oreg. | Henson Polytechnic Inst. | 100 | 248 | 1,210 |
| KFIO... | Spokane, Wash. | North Central High School | 100 | 373 | 1,100 |
| KFIQ... | Yakima, Wash. | First Methodist Church | 100 | 256 | 1,170 |
| KFIU... | Juneau, Alaska | Alaska Elec. Lt. & Power Co. | 70 | 226 | 1,350 |
| KFIZ... | Fond du Lac, Wis. | Daily Commonwealth | 100 | 273 | 1,100 |
| KFJB... | Marshalltown, Iowa | Marshall Electric Co. | 10 | 248 | 1,210 |
| KFJC... | Juncton City, Kan. | R. B. Fegan | 10 | 219 | 1,370 |
| KFJF... | Oklahoma City, Okla. | National Radio Mfg. Co. | 500 | 261 | 1,150 |
| KFJI... | Astoria, Oreg. | E. E. Marsh | 10 | 248 | 1,220 |
| KFJM... | Grand Forks, N. Dak. | University of N. Dakota | 100 | 278 | 1,080 |
| KFJR... | Portland, Ore. | Ashley C. Dixon & Son | 100 | 283 | 1,340 |
| KFJY... | Fort Dodge, Iowa | Tunwall Radio Co. | 50 | 346 | 1,220 |
| KFJZ... | Fort Worth, Texas | W. E. Branch | 50 | 254 | 1,180 |
| KFKA... | Greeley, Colo. | Colo. St. Teachers College | 50 | 273 | 1,100 |
| KFKB... | Melford, Kan. | J. R. Brinkley, M.D. | 1,000 | 431 | 694 |
| KFKU... | Lawrence, Kans. | University of Kansas | 500 | 276 | 1,100 |
| KFKX... | Hastings, Neb. | Westinghouse Elec. & Mfg. Co. | 5,000 | 252.3 | 1,040 |
| KFKZ... | Kirkville, Mo. | Chamber of Commerce | 10 | 225 | 1,330 |
| KFLR... | Albuquerque, N. M. | Univ. of New Mexico | 100 | 254 | 1,180 |
| KFLU... | San Benito, Tex. | San Benito Radio Club | 10 | 230 | 1,270 |
| KFLV... | Rockford, Ill. | Swedish Evang. Miss. Church | 100 | 229 | 1,310 |
| KFLX... | Galveston, Tex. | George R. Clough | 10 | 240 | 1,250 |
| KFLZ... | Atlantic, Iowa | Atlantic Automobile Co. | 100 | 273 | 1,100 |
| KFMR... | Stouxcity, Iowa | Morningside College | 100 | 261 | 1,150 |
| KFMW... | Houghton, Mich. | M. G. Sateren | 50 | 263 | 1,140 |
| KFMX... | Northfield, Minn. | Carleton College | 50 | 336.8 | 590 |
| KFNF... | Shenandoah, Iowa | Henry Field Seed Co. | 1,000 | 461 | 650 |
| KFOA... | Seattle, Wash. | Rhodes Department Store | 1,000 | 464.3 | 660 |
| KFOB... | Burlingame, Calif. | Chamber of Commerce | 50 | 228 | 1,320 |
| KFON... | Long Beach, Calif. | Nichols & Warriner, Inc. | 500 | 233 | 1,290 |
| KFOO... | Salt Lake City, Utah | Latter Day Saints Univ. | 250 | 236 | 1,270 |
| KFOR... | David City, Neb. | David City Tire & Elec. Co. | 100 | 226 | 1,330 |
| KFOT... | Wichita, Kans. | College Hill Radio Club | 50 | 231 | 1,300 |
| KFOX... | Omaha, Neb. | Technical High School | 100 | 244 | 1,210 |
| KFOY... | St. Paul, Minn. | Beacon Radio Service | 50 | 252 | 1,190 |
| KFPL... | Dublin, Tex. | C. C. Baxter | 15 | 252 | 1,190 |
| KFPM... | Greenville, Tex. | New Furniture Co. | 10 | 242 | 1,240 |
| KFPR... | Los Angeles, Calif. | Los Angeles Co. Forestry Dept. | 500 | 231 | 1,300 |

*KDKA also broadcasts on 63 meters for experimental and re-broadcasting purposes.

Broadcast Stations in U. S., Revised to Dec. 31, 1926

| Call Signal | Location of Station | Owner of Station | Power (watts) | Wave length | Frequency (kilocycles) |
|-------------|---------------------------|------------------------------|---------------|-------------|------------------------|
| KFPW | Cartersville, Mo. | St. John's Church | 20 | 258 | 1,160 |
| KFPY | Spokane, Wash. | Symons Investment Co. | 250 | 273 | 1,100 |
| KPQA | St. Louis, Mo. | The Principia | 100 | 267 | 1,150 |
| KFQB | Fort Worth, Tex. | Lone Star Co. | 1,000 | 508 | 590 |
| KFQD | Anchorage, Alaska | Shoven Supply Co. | 100 | 300 | 999 |
| KFQP | Iowa City, Iowa | George S. Carson, Jr. | 10 | 224 | 1,340 |
| KFQU | Holy City, Calif. | W. E. Riker | 100 | 231 | 1,300 |
| KFQW | Seattle, Wash. | C. F. Klorim | 50 | 216 | 1,390 |
| KFQZ | Hollywood, Calif. | Taft Radio Co. | 50 | 226 | 1,330 |
| KFRB | Beeville, Tex. | Hall Bros. | 250 | 248 | 1,210 |
| KFRG | San Francisco, Calif. | City of Paris Co. | 50 | 268 | 1,120 |
| KFRU | Columbia, Mo. | Stephens' College | 600 | 500 | 600 |
| KFRW | Olympia, Wash. | Western Broadcasting Co. | 50 | 219 | 1,370 |
| KFSD | San Diego, Calif. | Airfan Radio Corp. | 1,000 | 246 | 1,220 |
| KFSQ | Los Angeles, Calif. | John Park Evans-Harris Assn. | 500 | 275 | 1,090 |
| KFTL | Galveston, Tex. | Thos. Goggan & Bro. Mus. Co. | 50 | 255 | 1,160 |
| KFTM | Colorado Springs, Colo. | W. D. Conley | 100 | 240 | 1,250 |
| KFLO | St. Louis, Mo. | Concordia College | 500 | 545 | 550 |
| KFTP | Denver, Colo. | Fitzsimmons Gen. Hosp. | 50 | 234 | 1,280 |
| KFTR | Ogden, Utah | H. W. Perry & C. Redfield | 50 | 224 | 1,340 |
| KFTR | Oakland, Calif. | Louis L. Sherman | 50 | 256 | 1,170 |
| KFIT | Salt Lake City, Utah | University of Utah | 100 | 263 | 1,150 |
| KFTY | Oakland, Calif. | Matthewson Motor Co. | 50 | 220 | 1,360 |
| KFVD | Venice, Calif. | McWhinnis Bros. | 50 | 205.4 | 1,460 |
| KFVE | St. Louis, Mo. | Vernon Broadcasting Corp. | 5,000 | 240 | 1,260 |
| KFVG | Independence, Kans. | First Methodist Church | 35 | 226 | 1,270 |
| KFVI | Houston, Texas | Fifty-sixth Cavalry | 10 | 210 | 1,250 |
| KFVN | Fairmont, Minn. | C. E. Bagley | 50 | 227 | 1,320 |
| KFVR | Denver, Colo. | Moonlight Ranch | 50 | 244 | 1,230 |
| KFVS | Cape Girardeau, Mo. | Battery Station | 50 | 224 | 1,340 |
| KFVY | Albuquerque, N. M. | Radio Supply Co. | 10 | 250 | 1,200 |
| KFWB | Hollywood, Cal. | Warner Bros. Pictures, Inc. | 500 | 252 | 1,190 |
| KFWC | San Bernardino, Calif. | L. W. Wall | 50 | 221 | 1,030 |
| KFWF | St. Louis, Mo. | St. Louis Truth Center | 250 | 214.2 | 1,400 |
| KFWH | Eureka, Calif. | F. W. Morse | 100 | 254 | 1,180 |
| KFWI | So. San Francisco, Calif. | Radio Entertainments, Inc. | 500 | 250 | 1,200 |
| KFWM | Oakland, Calif. | Oakland Educational Society | 250 | 316 | 950 |
| KFWO | Avalon, Calif. | Lawrence Mott | 500 | 211.1 | 1,420 |
| KFWU | Pineville, La. | Louisiana College | 100 | 238 | 1,260 |
| KFWV | Portland, Ore. | KFWV Broadcast Studio | 100 | 213 | 1,410 |
| KFXB | Big Bear, Calif. | M. O. Heller | 500 | 203 | 1,480 |
| KFXD | Logan, Utah | L. H. Strong | 10 | 205 | 1,460 |
| KFXE | Denver, Colo. | Pike's Peak Broadcast Co. | 600 | 430 | 697 |
| KFXH | El Paso, Texas | Bledsoe Radio Co. | 50 | 242 | 1,240 |
| KFXJ | Edgewater, Colo. | R. O. Howell | 15 | 225.7 | 1,390 |
| KFXR | Oklahoma City | Classen Film Co. | 35 | 214 | 1,400 |
| KFXY | Flagstaff, Ariz. | M. N. Costigan | 50 | 205 | 1,460 |
| KFYF | Oxnard, Calif. | Carl's Radio Den. | 10 | 214 | 1,400 |
| KFYJ | Houston, Texas | Houston Pub. Co. | 10 | 228 | 1,260 |
| KFYO | Texarkana, Texas | Buchanan-Vaughn Co. | 10 | 210 | 1,430 |
| KFYR | Riamark, N. D. | Hookins-Meyer, Inc. | 10 | 248 | 1,210 |
| KGAR | Tucson, Ariz. | Tucson News | 100 | 244 | 1,230 |
| KOBS | Seattle, Wash. | A. C. Dalley | 1,000 | 227 | 1,321 |
| KOBU | Netchikan, Alaska | R. R. Thornton | 500 | 229 | 1,310 |
| KOBY | Shelby, Neb. | A. C. Denning | 10 | 202 | 1,480 |
| KOBW | Joplin, Mo. | Martin Bros. | 250 | 243 | 1,060 |
| KOBX | St. Joseph, Mo. | J. Babercrombie | 30 | 348 | 822 |
| KOBZ | York, Neb. | Fed. Live Stock Rem. Co. | 100 | 333 | 900 |
| KOCA | Decorah, Iowa | C. W. Greenlee | 15 | 260 | 1,070 |
| KOCB | Oklahoma City, Okla. | Wallace Radio Incl. | 50 | 331 | 905 |
| KOCC | Newark, Ark. | Moore Motor Co. | 100 | 240 | 1,280 |
| KOCH | Wayne, Neb. | Wayne Hosp. | 500 | 434 | 663 |
| KOCL | San Antonio, Texas | Intern. Radio Co. | 15 | 240 | 1,250 |
| KOCL | Seattle, Wash. | L. Wassner | 10 | 231 | 1,300 |
| KOCM | San Antonio, Texas | R. B. Bridge | 10 | 262 | 1,140 |
| KOCN | Concordia, Kans. | Elva E. Smith | 50 | 210 | 1,425 |
| KOCR | Brookings, S. D. | Cutler's Radio Service, Inc. | 15 | 252 | 1,190 |
| KOCX | Vida, Mont. | First State Bank | 10 | 210 | 1,249 |
| KODA | Dell Rapids, S. D. | Home Auto Co. | 15 | 251 | 1,160 |
| KODE | Barrett, Minn. | Jaren Drug Co. | 50 | 232 | 1,290 |
| KODI | Seattle, Wash. | N. W. Radio Service Co. | 50 | 476 | 720 |
| KODJ | Creco, Iowa | R. Rathert | 10 | 203 | 1,480 |
| KODM | Stockton, Calif. | V. G. Coping | 5 | 217 | 1,360 |
| KOO | Oakland, Calif. | General Electric Co. | 5,000 | 261 | 930 |

Broadcast Stations in U. S., Revised to Dec. 31, 1926

| Call Signal | Location of Station | Owner of Station | Power (watts) | Wave length | Frequency (kilo-cycles) |
|-------------|------------------------|-------------------------------|---------------|-------------|-------------------------|
| KGRS | Amarillo, Tex. | Gish Radio Service | 100 | 234 | 1,280 |
| KGTT | San Francisco, Calif. | Glad Tidings Tabernacle | 50 | 207 | 1,450 |
| KGU | Honolulu, Hawaii | Marion A. Mulrony | 500 | 270 | 1,110 |
| KGW | Portland, Ore. | Portland Morning Oregonian | 1,000 | 491.5 | 610 |
| KGY | Lacey, Wash. | St. Martin's College | 50 | 278 | 1,080 |
| KHJ | Los Angeles, Calif. | Times-Mirror Co. | 500 | 405.2 | 740 |
| KHO | Spokane, Wash. | Lee Wasmer | 1,000 | 395 | 760 |
| KICK | Anita, Iowa | Atlantic Auto Co. | 100 | 273 | 1,100 |
| KJBS | San Francisco, Calif. | J. Brunton & Co. | 5 | 234 | 1,280 |
| KJR | Seattle, Wash. | Northwest Radio Service Co. | 1,000 | 334.4 | 780 |
| KLDS | Independence, Mo. | Church of Jesus Christ | 1,000 | 441 | 680 |
| KLS | Oakland, Calif. | Warner Bros. | 250 | 252 | 1,240 |
| KLX | Oakland, Calif. | Tribune Publishing Co. | 500 | 508.2 | 590 |
| KLZ | Denver, Colo. | Reynolds Radio Co. | 500 | 266 | 1,130 |
| KMA | Shenandoah, Iowa | May Seed Co. | 500 | 461 | 650 |
| KMJ | Fresno, Calif. | Fresno Bee | 50 | 234 | 1,280 |
| KMMJ | Clay Centre Nebr. | M. M. Johnson Co. | 1,000 | 405 | 740 |
| KMO | Tacoma, Wash. | KMO, Inc. | 100 | 250 | 1,200 |
| KMOX | St. Louis, Mo. | Voice of St. Louis | 1500 | 280 | 1,070 |
| KMTR | Los Angeles, Calif. | KMTR Radio Corp. | 500 | 370 | 820 |
| KNRC | Santa Monica, Calif. | Kierulff & Ravenscroft | 1,000 | 228 | 1,260 |
| KNX | Los Angeles, Calif. | Los Angeles Express | 1,000 | 337 | 890 |
| KOA | Denver, Colo. | General Electric Co. | 5,000 | 322.4 | 930 |
| ZOAC | Corvallis, Ore. | Agr. Col. | 500 | 280 | 1,070 |
| KOB | State College, N. Mex. | New Mexico College of Agr. | 1000 | 348.6 | 860 |
| KOCH | Omaha, Neb. | Central High School | 250 | 253 | 1,160 |
| KOCW | Chickasha, Okla. | Okla. College | 200 | 252 | 1,190 |
| KOIL | Council Bluffs, Ia. | Mona Motor Oil Co. | 500 | 306 | 980 |
| KOIN | Portland, Ore. | H. B. Read | 1,000 | 319 | 940 |
| KOMO | Seattle, Wash. | B. F. Fisher | 1,000 | 306 | 980 |
| KOWW | Walla Walla, Wash. | F. A. Moore | 500 | 285 | 1,052 |
| KPJM | Prescott, Ariz. | Wilbur Radio Service | 15 | 215 | 1,345 |
| KPO | San Francisco, Cal. | Hale Bros. and the Chronicle | 1,000 | 428.3 | 700 |
| KPPC | Pasadena, Calif. | Pasadena Presbyterian Church | 50 | 229 | 1,310 |
| KPRC | Houston, Tex. | Pulitzer Pub. Co. | 500 | 296 | 1,010 |
| KPSN | Pasadena, Calif. | Pasadena Star-News | 1,000 | 315.6 | 950 |
| KQV | Pittsburgh, Pa. | Doubleday-Hill Elec. Co. | 500 | 275 | 1,090 |
| KQW | San Jose, Calif. | First Baptist Church | 500 | 333 | 900 |
| KRAC | Shreveport, La. | Cado Radio Club | 50 | 220 | 1,363 |
| KRE | Berkeley, Calif. | Berkeley Daily Gazette | 100 | 256 | 1,170 |
| KRLD | Dallas, Texas | Dallas Radio Lab. | 500 | 357 | 840 |
| KRSC | Seattle, Wash. | Radio Sales Corp. | 50 | 500 | 600 |
| KSAC | Manhattan, Kans. | Kans. State Agric. College | 500 | 340.7 | 880 |
| KSBA | Kennewood, La. | W. G. Patterson | 1,000 | 313 | 959 |
| KSD | St. Louis, Mo. | Pulitzer Pub. Co. | 500 | 545.1 | 550 |
| KSEI | Pocatello, Idaho | Broadcasting Assn. | 500 | 261 | 1,150 |
| KSL | Salt Lake City, Utah | Radio Service Corp. | 1,000 | 300 | 1,000 |
| KSMR | Santa Maria, Calif. | Val. Ry. Co. | 100 | 283 | 1,080 |
| KSO | Clarinda, Ia. | A. A. Berry Seed Co. | 500 | 445 | 740 |
| KSOO | Sioux Falls, S. D. | Sioux Falls Broadcast Assn. | 100 | 360 | 833 |
| KTAB | Oakland, Calif. | Tenth Ave. Baptist Church | 500 | 303 | 990 |
| KTBI | Los Angeles, Calif. | Bible Institute | 750 | 294 | 1,020 |
| KTBR | Portland, Ore. | Brown's Radio Shop | 50 | 263 | 1,140 |
| KTBS | Hot Springs, Ark. | New Arlington Hotel Co. | 1,000 | 375 | 800 |
| KTNT | Muscataine, Ia. | Norman Baker | 1,000 | 333 | 900 |
| KTUE | Houston, Texas | Whalt Elec. | 5 | 263 | 1,140 |
| KTW | Seattle, Wash. | First Presbyterian Church | 1,000 | 454.3 | 660 |
| KUOA | Fayetteville, Ark. | Univ. of Arkansas | 750 | 300 | 1,000 |
| KUOM | Missoula, Mont. | University of Montana | 500 | 244.8 | 1,230 |
| KUSD | Vermillion, S. Dak. | Univ. of So. Dakota | 100 | 274 | 1,080 |
| KUT | Austin, Tex. | Univ. of Texas | 500 | 231 | 1,300 |
| KVOO | Bristow, Okla. | S. W. Sales Corp. | 500 | 375 | 800 |
| KWCR | Cedar Rapids, Ia. | H. F. Parr | 500 | 278 | 1,080 |
| KWC | Stockton, Calif. | Portable Wireless Tel. Co. | 50 | 248 | 1,210 |
| KWKC | Kansas City, Mo. | Wilson Duncan Studios | 100 | 236 | 1,270 |
| KWKH | Shreveport, La. | W. G. Paterson | 1,000 | 313 | 959 |
| KWOR | Cedar Rapids, Iowa | H. F. Parr | 100 | 296 | 1,000 |
| KWSC | Pullman, Wash. | State College of Wash. | 500 | 349 | 860 |
| KWTG | Santa Ana, Calif. | J. W. Hancock | 15 | 261 | 1,150 |
| KWIC | Le Mars, Iowa | Western Union College | 50 | 252 | 1,190 |
| KWVG | Brownsville, Tex. | City of Brownsville, Tex. | 500 | 278 | 1,080 |
| KYW | Chicago, Ill. | Westinghouse Elec. & Mfg. Co. | 3,500 | 535.4 | 560 |
| KZIB | Manila, P. I. | I. Beck, Inc. | 20 | 250 | 1,200 |

Broadcast Stations in U. S., Revised to Dec. 31, 1926

| Call Signal | Location of Station | Owner of Station | Power (watts) | Wave length | Frequency (kilo-cycles) |
|-------------|---------------------------------|--------------------------------|---------------|-------------|-------------------------|
| KZKZ | Manila, P. I., 109 Plaza Moraga | Electrical Supply Co. | 100 | 270 | 1,110 |
| KZM | Oakland, Calif. | Preston D. Allen | 100 | 240 | 1,250 |
| KZRQ | Manila, P. I., Manila Hotel | Far Eastern Radio, Inc. | 500 | 222 | 1,300 |
| KZUK | Baguio, P. I. | F. J. Elmer | 500 | 266 | 822 |
| NAA | Arlington, Va. | United States Navy | 1,000 | 434.5 | 690 |
| WAAD | Cincinnati, Ohio | Ohio Mechanics Inst. | 25 | 268 | 1,100 |
| WAAP | Chicago, Ill. | Chicago Daily Drivers Journal | 250 | 278 | 1,080 |
| WAAM | Newark, N. J. | J. R. Nelson | 500 | 263 | 1,140 |
| WAAW | Omaha, Neb. | Omaha Grain Exchange | 500 | 284 | 780 |
| WABB | Harrisburg, Pa. | Harrisburg Radio Co. | 10 | 204 | 1,470 |
| WAAT | Hoboken, N. J. | F. Bremer | 10 | 235 | 1,276 |
| WABC | Ashville, N. C. | Ashville Battery Co. | 20 | 254 | 1,180 |
| WABI | Bangor, Me. | First Univ. Church | 100 | 240 | 1,250 |
| WABO | Westchester, N. Y. | Hickson Elec. Co., Inc. | 100 | 278 | 1,080 |
| WABQ | Haverford, Pa. | Haverford College Rad. Club | 100 | 261 | 1,150 |
| WABK | Toledo, Ohio | Walt High School | 50 | 262 | 1,140 |
| WABW | Wester, Ohio | College of Wooster | 50 | 200.8 | 1,450 |
| WABX | Mount Clemens, Mich. | Henry B. Joy | 500 | 246 | 1,220 |
| WABY | Philadelphia, Pa. | Jimm Magann, Jr. | 50 | 242 | 1,240 |
| WARZ | New Orleans, La. | Coliseum Place Baptist Church | 50 | 275 | 1,090 |
| WADC | Akron, O. | Portage Hotel | 500 | 268 | 1,100 |
| WAFD | Port Huron, Mich. | Albert B. Parfet Co. | 500 | 276 | 1,090 |
| WAGM | Loyal Oak, Mich. | E. L. Miller | 50 | 275 | 1,120 |
| WAGS | Bumterville, Mass. | Willow Garages, Inc. | 5 | 260 | 1,190 |
| WAHG | Richmond Hill, N. Y. | A. H. Grebe & Co. | 500 | 216.6 | 950 |
| WAHT | Taunton, Mass. | A H Walte & Co. | 10 | 220 | 1,210 |
| WAHU | Columbus, Ohio | Elk Country Club | 750 | 294 | 1,020 |
| WAMD | Minneapolis, Minn. | Hubbard & Co. | 500 | 244 | 1,230 |
| WAPI | Anniston, Ala. | Ala. Poly. Institute | 1,000 | 461 | 650 |
| WARC | Medford Hillside, Mas. | Am. Radio & Res. Co. | 100 | 261 | 1,150 |
| WARS | Brooklyn, N. Y. | Amateur Radio Co. | 500 | 298 | 1,010 |
| WASH | Grand Rapids, Mich. | Dexter Laundry Co. | 500 | 266 | 1,170 |
| WATT | Boston, Mass. | Edison Co. | 100 | 244 | 1,230 |
| WHA A | West Lafayette, Ind. | Purdue Univ. | 250 | 273 | 1,100 |
| WBAK | Harrisburg, Pa. | Penn State Police | 500 | 276 | 1,090 |
| WBAL | Baltimore, Md. | Consolidated Gas Co. | 1000 | 246 | 1,220 |
| WBAO | Decatur, Ill. | James Millikin Univ. | 100 | 270 | 1,110 |
| WRAP | Fort Worth, Tex. | Carter Publishing Co. | 1,500 | 475.9 | 630 |
| WBAW | Nashville, Tenn. | Braid Elect. Co. | 100 | 236 | 1,270 |
| WHA X | Wilkes-Barre, Pa. | John H. Stenger, Jr. | 100 | 266 | 1,170 |
| WBBC | Brooklyn, N. Y. | Peter J. Testan | 100 | 260 | 1,200 |
| WBBL | Richmond, Va. | Grace Covenant Church | 100 | 220 | 1,210 |
| WBBN | Chicago, Ill. | Atlas Investment Co. | 1,500 | 226 | 1,230 |
| WBRP | Petokey, Mich. | Petokey High School | 200 | 228 | 1,200 |
| WBBR | Rossville, N. Y. | People's Pulpit Assn. | 500 | 416 | 720 |
| WBBW | Norfolk, Va. | Rudner Junior High School | 50 | 222 | 1,260 |
| WBRV | Charleston, S. C. | Washington Light Inf. | 10 | 228 | 1,120 |
| WBBZ | Chicago, Ill. | O. L. Carrell (portable) | 50 | 215.7 | 1,290 |
| WBCN | Chicago, Ill. | Foster & McDonnell | 500 | 260 | 1,130 |
| WBES | Tacoma Park, Md. | Ellis Electrical School | 100 | 222 | 1,250 |
| WBMS | N. Bergen, N. J. | G. J. Showrer | 10 | 224 | 1,240 |
| WBNE | New York City | B. A. Rushome Corp. | 500 | 222.4 | 1,230 |
| WBOQ | Richmond Hill, N. Y. | A. H. Grebe Co. | 100 | 226 | 1,270 |
| WRPI | Newark, N. J. | Ira Nelson | 500 | 263 | 1,140 |
| WBRC | Birmingham, Ala. | Bell Radio Corp. | 50 | 248 | 1,210 |
| WBOE | Wilkes-Barre, Pa. | Baltimore Radio Exchange | 100 | 221 | 1,290 |
| WBRL | Tilton, N. H. | Booth Radio Lab. | 500 | 266 | 821 |
| WBRs | Brooklyn, N. Y. | Univ. Radio Mfg. Co. | 100 | 224 | 761 |
| WBT | Charlotte, N. C. | So. Radio Corp. | 250 | 276 | 1,090 |
| WBTZ | Springfield, Mass. | Westinghouse Elec. & Mfg. Co. | 5,000 | 321.1 | 900 |
| WBZA | Boston, Mass. | Westinghouse Electric | 250 | 323 | 900 |
| WCAC | Mansfield, Conn. | Conn. Agr. Col. | 500 | 276 | 1,090 |
| WCAD | Canton, N. Y. | St. Lawrence Univ. | 250 | 263 | 1,140 |
| WCAE | Pittsburgh, Pa. | Kaufmann & Beer Co. | 500 | 401.2 | 650 |
| WCAH | Columbus, Ohio | Entrekin Elec. Co. | 500 | 266 | 1,120 |
| WCAJ | University Place, Neb. | Nebraska Wesleyan Univ. | 500 | 254 | 1,180 |
| WCAT | Northfield, Minn. | St. John College | 500 | 226.9 | 820 |
| WCAM | Camden, N. J. | City of Camden | 250 | 227 | 820 |
| WCAO | Baltimore, Md. | Sanders & Stayman Co. | 100 | 276 | 1,090 |
| WCAR | San Antonio, Tex. | Southern Radio Corp. of Texas | 500 | 263 | 1,140 |
| WCAT | Rapid City, S. Dak. | So. Dakota State Sch. of Mines | 50 | 240 | 1,250 |
| WCAU | Philadelphia, Pa. | Durham & Co. | 500 | 270 | 1,080 |
| WCAX | Burlington, Vt. | Univ. of Vermont | 100 | 260 | 1,200 |

Broadcast Stations in U. S., Revised to Dec. 31, 1926

| Call Signal | Location of Station | Owner of Station | Power (watts) | Wave length | Frequency (kilo-cycles) |
|-------------|----------------------------|---|---------------|-------------|-------------------------|
| WCAZ... | Carthage, Ill. | Carthage Col. | 50 | 246 | 1,220 |
| WCBA... | Allentown, Pa. | Chas. W. Heimbaen Camegraph Repair Shop | 15 | 254 | 1,180 |
| WCBD... | Zion, Ill. | Wilbur G. Voliva | 5,000 | 344.6 | 870 |
| WCBK... | New Orleans, La. | Orbit Bros. Radio Co. | 5 | 263 | 1,140 |
| WCBH... | Oxford, Miss. (near) | Univ. of Miss. | 50 | 242 | 1,240 |
| WCBM... | Baltimore, Md. | Hotel Chateau | 50 | 229 | 1,310 |
| WCBR... | Providence, R. I. (port.) | Chas. H. Messer, 42 Doyle | 100 | 210 | 1,430 |
| WCBS... | Boston, Mass. | N. L. Dewing | 250 | 242 | 1,230 |
| WCCU... | Anoka, Minn. | Washburn-Crosby Co. | 5,000 | 416.4 | 720 |
| WCFL... | Chicago, Ill. | Chicago Federation of Labor | 1,000 | 491.5 | 610 |
| WCFT... | Tullahoma, Tenn. | Knights of Pythias | 10 | 252 | 1,190 |
| WCGU... | Lakewood, N. J. | C. Gungar | 500 | 251 | 855 |
| WCLO... | Camp Lake, Wis. | E. H. Whitmore | 50 | 231 | 1,300 |
| WCLS... | Joliet, Ill. | WCLS, Inc. | 150 | 214 | 1,400 |
| WCMA... | Culver, Ind. | Culver Mill Acc. | 500 | 258.5 | 1,160 |
| WCOA... | Pensacola, Fla. | City of Pensacola | 500 | 222 | 1,350 |
| WCRW... | Chicago, Ill. | Clinton R. White | 50 | 416 | 720 |
| WCSS... | Portland, Me. | H. P. Rives | 500 | 500 | 600 |
| WCSSO... | Springfield, Ohio | Wittenberg Col. | 100 | 248 | 1,210 |
| WCWK... | Fort Wayne, Ind. | Chester Keen | 250 | 234 | 1,280 |
| WCWS... | Providence, R. I. | C. W. Selen | 100 | 210 | 1,430 |
| WCA... | Detroit, Mich. | Detroit Free Press | 5,000 | 616.9 | 580 |
| WDAD... | Nashville, Tenn. | Dad's Auto Accessories | 150 | 226 | 1,320 |
| WDAB... | Tampa, Fla. | Tampa Daily News | 200 | 278 | 1,100 |
| WDAR... | Kansas City, Mo. | Kansas City Star | 1,000 | 365.6 | 820 |
| WDAQ... | Amarillo, Tex. | J. Laurance Martin | 100 | 263 | 1,140 |
| WDAH... | El Paso, Texas | Trinity Meth. Church | 50 | 268 | 1,120 |
| WDA... | Fargo, N. Dak. | Radio Equip. Corp. | 50 | 261 | 1,150 |
| WDBE... | Atlanta, Ga., 22 Luckie St | Glham-Schoen Elec. Co. | 100 | 270 | 1,110 |
| WDBJ... | Roanoke, Va. | Richardson-Wayland Elec. Crp. | 50 | 229 | 1,310 |
| WDBK... | Cleveland, Ohio | M. F. Broz Fur. Co. | 100 | 227 | 1,320 |
| WDBO... | White Park, Pa. | Rollins College | 500 | 240 | 1,250 |
| WDBZ... | Kingston, N. Y. | Kingston Radio Club | 10 | 232 | 1,290 |
| WDFL... | Wilmington, Del. | Electric Spec. Co. | 100 | 265 | 1,130 |
| WDGY... | Minneapolis, Minn. | Dr. G. W. Young | 300 | 263 | 1,140 |
| WDOD... | Chattanooga, Tenn. | Chattanooga Radio Co. | 300 | 256 | 1,170 |
| WDRK... | New Haven, Conn. | Doulittle Radio Co. | 500 | 268 | 1,120 |
| WDVF... | Boston, R. I. | Forbes W. Hunt | 500 | 440.9 | 680 |
| WDXL... | Detroit, Mich. | DXL Radio Corp. | 250 | 297 | 1,010 |
| WDX... | Asheola, Ill. | James L. Bush | 100 | 273 | 1,080 |
| WEAF... | New York, N. Y. | National Broadcasting Co., Inc. | 5,000 | 491.5 | 610 |
| WEAL... | Ithaca, N. Y. | Cornell University | 500 | 254 | 1,180 |
| WEAM... | North Plainfield, N. J. | Borough of N. Plainfield | 250 | 261 | 1,150 |
| WEAN... | Providence, R. I. | Shepard Co. | 500 | 267 | 817 |
| WEAO... | Columbus, Ohio | Ohio State University | 750 | 399.9 | 1,020 |
| WEAR... | Cleveland, Ohio | Willard Storage Battery Co. | 750 | 399.4 | 770 |
| WEAU... | Sioux City, Iowa | Dawson Bros. Co. | 100 | 275 | 1,090 |
| WEBC... | Superior, Wis. | Walter C. Bridges | 100 | 242 | 1,240 |
| WEBD... | Anderson, Ind. | Elec. Equip. & Service Co. | 10 | 246 | 1,220 |
| WEBH... | Chicago, Ill. | Edgewater Beach Hotel Co. | 2,000 | 370.2 | 810 |
| WEHJ... | New York City | Third Ave. Railway Co. | 500 | 272 | 1,100 |
| WEHL... | (Portable) | Radio Corp. of America | 100 | 226 | 1,330 |
| WEBQ... | Harrisburg, Ill. | Tate Radio Co. | 10 | 225 | 1,330 |
| WEBR... | Buffalo, N. Y. | H. H. Howell | 100 | 244 | 1,230 |
| WEBW... | Beloit, Wis. | Beloit College | 500 | 268 | 1,120 |
| WEBZ... | Savannah, Ga. | Savannah Radio Corp. | 50 | 263 | 1,140 |
| WEDC... | Chicago, Ill. | E. Denemark | 1,000 | 423 | 710 |
| WEEL... | Boston, Mass. | Edison Elec. Illum. Co. | 500 | 349 | 860 |
| WEHS... | Evanston, Ill. | Robt. E. Hughes | 10 | 203.4 | 1,480 |
| WENC... | Deerborn Springs, Mich. | Emmanuel Miss. College | 500 | 316 | 950 |
| WENR... | Chicago, Ill. | All-American Radio Corp. | 1,000 | 364 | 1,130 |
| WEPS... | Chaucester, Mass. | R. S. Matheson | 100 | 295 | 1,016 |
| WEW... | St. Louis, Mo. | St. Louis University | 1,000 | 360 | 833 |
| WFAA... | Dallas, Tex. | Dallas News & Dallas Journ. | 500 | 475.9 | 620 |
| WFAM... | St. Cloud, Minn. | Times Pub. Co. | 10 | 273 | 1,100 |
| WFAY... | Lincoln, Neb. | Univ. of Nebr. | 500 | 275 | 1,090 |
| WFBC... | Greenville, Tenn. | First Baptist Church | 50 | 250 | 1,200 |
| WFBE... | Seymour, Ind. | John Van de Walle | 10 | 226 | 1,330 |
| WFBG... | Wilmington, Pa. | William F. Gable Co. | 100 | 278 | 1,080 |
| WFCL... | Pawtucket, R. I. | F. Crook, Inc. | 100 | 229 | 1,300 |
| WFJ... | Collegeville, Minn. | St. John's Univ. | 100 | 236 | 1,270 |
| WFBL... | Syracuse, N. Y. | Onondaga Hotel | 100 | 252 | 1,190 |
| WFBM... | Indianapolis, Ind. | Merchants Heat & Light Co. | 250 | 268 | 1,130 |

Broadcast Stations in U. S., Revised to Dec. 31, 1926

| Call Signal | Location of Station | Owner of Station | Power (watts) | Wave length | Frequency (kilo-cycles) |
|-------------|----------------------|-----------------------------------|---------------|-------------|-------------------------|
| WFBR... | Baltimore, Md. | Fifth Infantry, Md. Nat. Gd. | 200 | 254 | 1,180 |
| WFHZ... | Galesburg, Ill. | Knox College | 20 | 254 | 1,180 |
| WFDF... | Flint, Mich. | Frank P. Fallain | 100 | 234 | 1,280 |
| WFKB... | Chicago, Ill. | Francis K. Bridgman | 500 | 217.3 | 1,350 |
| WFL... | Philadelphia, Pa. | Strawbridge & Clothier | 500 | 224.5 | 1,300 |
| WFKL... | Brooklyn, N. Y. | Flatbush Radio Labs. | 100 | 330 | 1,250 |
| WGAL... | Lancaster, Pa. | Lancaster Elec. Sup. & Const. Co. | 10 | 248 | 1,210 |
| WGBB... | Freeport, N. Y. | Harry H. Carman | 100 | 244 | 1,230 |
| WGBU... | Memphis, Tenn. | First Baptist Church | 10 | 278 | 1,080 |
| WGBF... | Evansville, Ind. | Finke Furniture Co. | 500 | 236 | 1,270 |
| WGBL... | Scranton, Pa. | Scranton Broadcasters, Inc. | 10 | 340 | 1,250 |
| WGBR... | Marshfield, Wis. | Marshfield Broad. Assn. | 10 | 222 | 1,320 |
| WGBS... | New York, N. Y. | Glimco Bros. | 500 | 315.4 | 950 |
| WGBU... | Tulford, Fla. | Florida Fin. Co. | 500 | 278 | 1,080 |
| WGBX... | Orono, Me. | University of Maine | 500 | 224 | 1,280 |
| WGCP... | Newark, N. J. | D. W. May | 500 | 222 | 1,190 |
| WGES... | Chicago, Ill. | Oak Leaves Broadcasting Corp. | 500 | 316 | 950 |
| WGLB... | Clearwater, Fla. | Fl. Harrison Hotel | 500 | 266 | 1,130 |
| WGMP... | Detroit, Mich. | G. H. Phelps, Inc. | 1,500 | 270 | 1,110 |
| WGM... | Jeanette, Pa. | Verne E. Spencer | 10 | 269 | 1,110 |
| WGMU... | Richmond Hill, N. J. | A. H. Grebe & Co., Inc. | 100 | 286 | 1,270 |
| WGN... | Chicago, Ill. | The Tribune (Drake Hotel) | 1,000 | 302 | 990 |
| WGR... | Buffalo, N. Y. | Gen. Tel. Mfg. Corp. | 100 | 312 | 940 |
| WGST... | Atlanta, Ga. | Ga. School of Tech. | 500 | 270 | 1,110 |
| WGW... | Milwaukee, Wis. | Radiocast Corp. | 1,000 | 334 | 780 |
| *WGY... | Schenectady, N. Y. | Gen. Electric Co. | 5,000 | 279.5 | 790 |
| WHA... | Madison, Wis. | Univ. of Wisc. | 750 | 535.4 | 560 |
| WHAD... | Milwaukee, Wis. | Marquette Univ. | 500 | 276 | 1,090 |
| WHAM... | Rochester, N. Y. | Univ. of Rochester | 100 | 278 | 1,080 |
| WHAP... | New York, N. Y. | Wm. H. Taylor Corp. | 500 | 421 | 695 |
| WHAR... | Atlantic City, N. J. | Seaside Hotel | 500 | 278 | 1,090 |
| WHAS... | Louisville, Ky. | Cour-Journ. & Louisville Times | 500 | 329.8 | 760 |
| WHAZ... | Troy, N. Y. | Rensselaer Polytech. Inst. | 1,000 | 320 | 790 |
| WHB... | Kansas City, Mo. | Sweeney School Co. | 500 | 255.5 | 820 |
| WHHA... | Oil City, Pa. | Shaffer Music House | 10 | 250 | 1,200 |
| WHBC... | Canton, O. | Rev. H. P. Graham | 10 | 224 | 1,180 |
| WHBD... | Bentonville, O. | Chamber of Commerce | 20 | 222 | 1,350 |
| WHBF... | Rock Island, Ill. | Beardsley Specialty Co. | 100 | 222 | 1,350 |
| WHBG... | Harrisburg, Pa. | John S. Skane | 20 | 221 | 1,300 |
| WHBT... | Logansport, Ind. | C. L. Carrell | 50 | 216 | 1,380 |
| WHBM... | Chicago, Ill. | C. L. Carrell | 20 | 216 | 1,390 |
| WHBN... | St. Petersburg, Fla. | Methodist Church | 10 | 228 | 1,260 |
| WHBP... | Johnstown, Pa. | Johnstown Auto Co. | 100 | 256 | 1,170 |
| WHBQ... | Memphis, Tenn. | St. John's Methodist Church | 50 | 222 | 1,290 |
| WHBU... | Anderson, Ind. | Rivera Theatre | 10 | 211.8 | 1,370 |
| WHBW... | Philadelphia, Pa. | D. R. Kierozie | 100 | 210 | 1,390 |
| WHBY... | West De Pere, Wis. | St. Norbert's College | 50 | 250 | 1,200 |
| WHBI... | Indianapolis, Ind. | Wm. Hood Dunwoody Ind. Inst. | 500 | 278 | 1,080 |
| WHBK... | Rochester, N. Y. | Hickson Elect. Co. | 100 | 268 | 1,160 |
| WHFC... | Chicago, Ill. | Hotel Flanders | 150 | 269 | 1,160 |
| WHK... | Cleveland, Ohio | Radio Air Service | 1,000 | 278 | 1,100 |
| WHIA... | New York, N. Y. | George Schubel | 500 | 261.2 | 820 |
| WHI... | Des Moines, Iowa | Hankers Life Co. | 5,000 | 526 | 570 |
| WHOG... | Huntingdon, Ind. | Broadcasters' Assn. | 15 | 242 | 1,240 |
| WHI... | Dorfield, Ill. | Radiohone Corp. | 2,500 | 238 | 1,260 |
| WIAD... | Philadelphia, Pa. | Howard R. Muir | 100 | 260 | 1,290 |
| WIAS... | Burlington, Iowa | Home Electric Co. | 100 | 264 | 1,180 |
| WIBA... | Madison, Wis. | Times Studio | 100 | 226 | 1,270 |
| WIBG... | Elkins Park, Pa. | St. Paul's Church | 50 | 222 | 1,350 |
| WIBH... | New Bedford, Mass. | Elite Radio Stores | 30 | 209.7 | 1,430 |
| WIBI... | Flushing, L. I. | F. B. Zittell | 50 | 218.8 | 1,370 |
| WIBJ... | Chicago, Ill. | C. L. Carrell | 50 | 216.7 | 1,390 |
| WIBM... | Chicago, Ill. | Billy Maine (portable) | 10 | 216 | 1,390 |
| WIBO... | Chicago, Ill. | Nelson Bros. | 1,000 | 226 | 1,330 |
| WIBR... | Weirton, W. Va. | Thos. A. Owings | 50 | 246 | 1,220 |
| WIBS... | Elizabeth, N. J. | N. J. National Guard | 10 | 202.6 | 1,480 |
| WIBU... | Poynette, Wis. | The Electric Farm | 20 | 222 | 1,350 |
| WIBW... | Logansport, Ind. | L. L. Dill | 100 | 220 | 1,260 |
| WIBX... | Utica, N. Y. | Grid-Leak, Inc. | 150 | 234 | 1,280 |
| WIBZ... | Montgomery, Ala. | Powell Elec. Co. | 10 | 221 | 1,300 |
| WICC... | Bridgeport, Conn. | Bridgeport Broadcast Sta. | 500 | 285 | 1,052 |

*WGY also broadcasts on 61 meters for experimental and re-broadcasting purposes.

Broadcast Stations in U. S., Revised to Dec. 31, 1926

| Call Signal | Location of Station | Owner of Station | Power (watts) | Wave length | Frequency (kilocycles) |
|-------------|--|-------------------------------------|---------------|-------------|------------------------|
| WIL | St. Louis, Mo. | Benson Radio Co. | 250 | 258 | 1,162 |
| WIOD | Miami Beach, Fla. | Carl G. Fisher | 1,000 | 248 | 1,210 |
| WIP | Philadelphia, Pa. | Gumbel Bros. | 500 | 508.2 | 590 |
| WJAD | Waco, Tex. | Jackson's Radio Eng. Labs. | 500 | 352.7 | 850 |
| WJAF | Ferndale, Mich. | J. A. Fenberg Radio Co. | 50 | 407 | 737 |
| WJAG | Norfolk, Neb. | Norfolk Daily News | 200 | 270 | 1,110 |
| WJAK | Greentown, Ind. | Clifford L. White | 50 | 254 | 1,180 |
| WJAM | Cedar Rapids, Iowa | W. D. M. Perham | 100 | 268 | 1,120 |
| WJAR | Providence, R. I. | The Outlet Co. | 500 | 305.9 | 980 |
| WJAS | Pittsburgh, Pa. | Pittsburgh Radio Sup. House | 500 | 275 | 1,090 |
| WJAX | Jacksonville, Fla. | City of Jacksonville | 1,000 | 337 | 890 |
| WJAZ | Mount Prospect, Ill. | Zenith Radio Co. | 1,500 | 330 | 910 |
| WJBA | Joliet, Ill. | D. H. Lentz | 50 | 206.8 | 1,450 |
| WJBB | St. Petersburg, Fla. | L. W. McClung | 10 | 254 | 1,180 |
| WJBC | La Salle, Ill. | Hummer Furniture Co. | 100 | 234 | 1,280 |
| WJBI | Red Bank, N. J. | Robt. S. Johnson | 250 | 219 | 1,370 |
| WJRK | Ypsilanti, Mich. | E. F. Goodwin | 10 | 233 | 1,290 |
| WJBL | Decatur, Ill. | Wm. Gushard D. G. Co. | 500 | 270 | 1,110 |
| WJBO | New Orleans, La. | N. Jensen | 100 | 268 | 1,120 |
| WJBR | Omro, Wis. | Geusch & Stearns | 50 | 227 | 1,320 |
| WJRT | Chicago, Ill. | J. S. Boyd | 500 | 459 | 640 |
| WJBU | Lewistown, Pa. | Bucknell Univ. | 100 | 211 | 1,420 |
| WJBV | Woodhaven, N. Y. | Union Course Lab. | 100 | 288 | 1,040 |
| WJBW | New Orleans, La. | C. Carlson, Jr. | 30 | 340 | 880 |
| WJBX | Osterville, Mass. | Henderson & Ross | 100 | 260 | 1,100 |
| WJBY | Gadsden, Ala. | Elect. Const. Co. | 30 | 270.1 | 1,110 |
| WJIB | New York City | M. B. Ross | 250 | 517 | 580 |
| WJJD | Mooseheart, Ill. | Supreme Lodge, Loyal Order of Moose | 1,000 | 370 | 810 |
| WJR | Pontiac, Mich. | Jewett Radio Co. | 5,000 | 517 | 580 |
| WJWB | New Orleans | C. Carlson, Jr. | 100 | 270 | 1,110 |
| WJY | New York, N. Y. | Radio Corp. of America | 1,000 | 405.2 | 740 |
| WJZ | Boundbrook, N. J. | Radio Corp. of America | 50,000 | 454.3 | 660 |
| WKAF | Milwaukee, Wis. | WKAF Broadcasting Co. | 500 | 261 | 1,150 |
| WKAQ | San Juan, P. R. | Radio Corp. of P. R. | 500 | 340.7 | 880 |
| WKAR | East Lansing, Mich. | Michigan State College | 1,000 | 286 | 1,050 |
| WKAV | Laconia, N. H. | Laconia Radio Club | 50 | 224 | 1,340 |
| WKBA | Chicago, Ill. | Arrow Battery Co. | 200 | 210 | 1,430 |
| WKBB | Joliet, Ill. | Sanders Bros. | 150 | 233 | 1,060 |
| WKBC | Birmingham, Ala. | H. L. Ansley | 50 | 225 | 1,333 |
| WKBF | Webster, Mass. | K & B Electric Co. | 100 | 270 | 1,110 |
| WKBF | Indianapolis, Ind. | N. D. Watson | 100 | 244 | 1,229 |
| WKBG | Chicago, Ill. | C. S. Carrell (portable) | 100 | 216 | 1,390 |
| WKBH | La Crosse, Wis. | Callaway Music | 500 | 250 | 1,200 |
| WKBI | Chicago, Ill. | F. L. Schoonwolf | 50 | 220 | 1,360 |
| WKBJ | St. Petersburg, Fla. | Gosi Tnber, Inc. | 250 | 280 | 1,071 |
| WKBL | Monroe, Mich. | Monrovia Radio Co. | 15 | 252 | 1,190 |
| WKBM | Youngstown, Ohio | Radio Elect. Service Co. | 73 | 360 | 833 |
| WKBO | Jersey City, N. J. | Cornish Corp. | 200 | 309 | 970 |
| WKBP | Battle Creek, Mich. | Battle Creek News | 50 | 265 | 1,131 |
| WKBQ | New York City | Starlight Park | 10 | 285 | 1,052 |
| WKBR | Auburn, N. Y. | C. S. Herser | 100 | 225 | 1,333 |
| WKBS | Galesburg, Ill. | P. N. Nelson | 200 | 361 | 830 |
| WKBT | New Orleans, La. | First Baptist Church | 50 | 262 | 1,190 |
| WKBV | Brookville, Ind. | Knox Bat. Co. | 75 | 236 | 1,270 |
| WKBW | Buffalo, N. Y. | Churchill Evans Assn. | 1,000 | 363 | 827 |
| WKBY | Danville, Pa. | P. Quick (portable) | 50 | 220 | 1,363 |
| WKBZ | Ludington, Mich. | K. L. Ashbacher | 15 | 256 | 1,170 |
| WKDR | Kenosha, Wis. | E. A. Dato | 10 | 428 | 700 |
| WKJC | Lancaster, Pa. | K. Johnston | 50 | 259 | 1,160 |
| WKRC | Cincinnati, O. | Kodak Radio Shop | 1,000 | 422.3 | 710 |
| WKY | Oklahoma City, Okla. | WKY Radio Shop | 100 | 275 | 1,090 |
| WLAL | Tulsa, Okla. | First Christian Church | 100 | 250 | 1,200 |
| WLAP | Louisville, Ky., 305 West Breckenridge St. | W. V. Jordan | 20 | 275 | 1,090 |
| WLR | Minneapolis, Minn. | Univ. of Minn. | 500 | 278 | 1,080 |
| WLBC | Muncie, Ind. | D. A. Burton | 50 | 224 | 1,340 |
| WLBE | Brooklyn, N. Y. | J. H. Fruitman | 15 | 231 | 1,300 |
| WLBF | Kansas City | E. L. Dillard | 25 | 211 | 1,420 |
| WLBI | Stevens Point, Wis. | Wis. Dept. of Markets | 500 | 274 | 1,080 |
| WLBI | Chicago, Ill. | Liberty Weekly | 4,000 | 302.8 | 990 |
| WLIT | Philadelphia, Pa. | Lit Bros. | 500 | 394.5 | 760 |
| WLK | Crete, Ill. | Sears-Roebuck & Co. | 5,000 | 344.6 | 870 |
| WLSL | Cranston, R. I. | Lincoln Studios | 500 | 441 | 680 |

Broadcast Stations in U. S., Revised to Dec. 31, 1926

| Call Signal | Location of Station | Owner of Station | Power (watts) | Wave length | Frequency (kilo-cycles) |
|-------------|----------------------------------|-------------------------------|---------------|-------------|-------------------------|
| WLTS... | Chicago, Ill. | Lane Technical High School... | 100 | 258 | 1,160 |
| WLW... | Harrison, Ohio. | Crosley Radio Corp. | 5,000 | 422.3 | 710 |
| WLWL... | New York, N. Y. | St. Paul Miss. Society | 5,000 | 384 | 780 |
| WMAC... | Cazenovia, N. Y. | Wive H. Meredith | 100 | 275 | 1,090 |
| WMAF... | Dartmouth, Mass. | Round Hills Radio Corp. | 1,000 | 441 | 680 |
| WMAK... | Lockport, N. Y. | Norton Laboratories | 500 | 266 | 1,130 |
| WMAL... | Washington, D. C. | M. A. Lasse Co. | 100 | 294 | 1,010 |
| WMAN... | Columbus, Ohio. | Haskett Radio Station | 50 | 278 | 1,080 |
| WMAQ... | Chicago, Ill. | Chicago Daily News | 1,000 | 447.5 | 670 |
| WMAY... | St. Louis, Mo. | Kingshighway Presby. Church. | 100 | 248 | 1,210 |
| WMAZ... | Macon, Ga. | Mercere University | 500 | 251 | 1,150 |
| WMBE... | Chicago, Ill. | Amer. Bond & Mortgage Co. | 500 | 250 | 1,200 |
| WMBC... | Detroit, Mich. | Michigan Broadcasting Co. | 100 | 255 | 1,170 |
| WMBF... | Miami Beach, Fla. | Plaza Hotel | 500 | 244.4 | 790 |
| WMBI... | Chicago, Ill. | Moody Bible Inst. | 500 | 233.3 | 1,040 |
| WMC... | Memphis, Tenn. | Commercial Appeal | 1,000 | 499.7 | 600 |
| WMCA... | Hoboken, N. J. | Greeley Sq. Hotel | 500 | 341 | 880 |
| WMBJ... | Jamaica, N. Y. | Peter J. Prinz | 5 | 227 | 1,320 |
| WMSG... | New York City | Madison Sq. Garden | 500 | 202.3 | 590 |
| WNAE... | Boston, Mass. | Shepherd Stores | 100 | 230.3 | 1,070 |
| WNAO... | Boston, Mass. | Shepherd Stores | 500 | 430.1 | 697 |
| WNAD... | Norman, Okla. | Univ. of Oklahoma | 500 | 254 | 1,180 |
| WNAL... | Omaha, Neb. | R. J. Rockwell | 50 | 258 | 1,160 |
| WNAT... | Philadelphia, Pa. | Lennie Bros. Co. | 100 | 250 | 1,200 |
| WYAK... | Yankton, S. Dak. | Daka Radio Apparatus Co. | 100 | 244 | 1,230 |
| WNBH... | New Bedford, Mass. | New Bedford Hotel | 250 | 248 | 1,210 |
| WNB... | Newark, N. J. | Radio Shop of Newark | 500 | 350 | 1,190 |
| WNOX... | Knoxville, Tenn. | People's T & T. Co. | 500 | 268 | 1,120 |
| WNRC... | Greensboro, N. C. | W. M. Nelson | 10 | 224 | 1,340 |
| WNYC... | New York City | City of New York | 1,000 | 524 | 670 |
| WOAI... | San Antonio, Tex. | Southern Equip. Co. | 2,000 | 374.5 | 760 |
| WOAN... | Lawrenceburg, Tenn. | James D. Vaughn | 500 | 292.8 | 1,000 |
| WOAW... | Omaha, Neb. | Woodmen of the World | 1,000 | 522 | 670 |
| WOAY... | Trenton, N. J. | Franklyn J. Wolf | 500 | 240 | 1,250 |
| WOBB... | Chicago, Ill. | Longacre Const. Co. | 5 | 255 | 1,140 |
| WOC... | Imverort Iowa | Palmer Sch. of Chiropractic | 5,000 | 422.5 | 620 |
| WOCB... | Orlando, Fla. | Orlando Broadcast Co. | 50 | 284 | 1,021 |
| WOCI... | Jamestown, N. Y. | Hotel Jamestown | 15 | 275 | 1,090 |
| WODA... | Patterson, N. J. | O'Dea Radio & Victrola Shop | 250 | 291 | 767 |
| WOI... | Ames, Iowa | Iowa State College | 750 | 270 | 1,110 |
| WOK... | Homewood, Ill. | Neotrowound Radio Co. | 5,000 | 217 | 1,300 |
| WOKO... | Peckskill, N. Y. | Harold Smith | 50 | 233 | 1,220 |
| WOMT... | Manitowac, Wis. | Mikadow Theatre | 50 | 254 | 1,180 |
| WOO... | Philadelphia, Pa. | John Wannamaker | 500 | 504.2 | 590 |
| WOOD... | Grand Rapids, Mich. | Grand Rapids Radio Co. | 500 | 242 | 1,240 |
| WOQ... | Kansas City, Mo. | Unity Sch. of Christianity | 1,000 | 273 | 1,080 |
| WOPH... | Newark, N. J. | L. Ramberger & Co. | 500 | 405.3 | 740 |
| WOPD... | Batavia, Ill. | People Pulpit Assn. | 5,000 | 275 | 1,095 |
| WOSL... | Jefferson City, Mo. | Mo State Marketing Bureau | 500 | 440.3 | 680 |
| WOWT... | New Orleans, La. | Owl Battery Co. | 10 | 370 | 1,110 |
| WOWO... | Fort Wayne, Ind. | Main Auto Supply Co. | 500 | 227 | 1,320 |
| WPAK... | Agricultural College, N. Dak. | N. Dak. Agri. College | 50 | 278 | 1,090 |
| WPCC... | Chicago, Ill. | No. Shore Cong. Church | 500 | 253 | 1,160 |
| WPCH... | New York City | People's Broadcasting Corp. | 500 | 273 | 1,100 |
| WPDQ... | Buffalo, N. Y. | H. F. Turner | 250 | 205 | 1,480 |
| WPD... | Atlantic City, N. J. | Municipality of Atlantic City | 5,000 | 299.3 | 1,000 |
| WPRC... | Harrisburg, Pa. | Wilson Ptg. & Radio Co. | 100 | 215.7 | 1,340 |
| WPRC... | State College, Pa. | Penn. State College | 500 | 281 | 1,050 |
| WQAA... | Parkeshurk, Pa. | Horace A. Beale, Jr. | 500 | 220 | 1,340 |
| WQAE... | Springfield, Vt. | Moore Radio News Station | 50 | 244 | 1,220 |
| WQAM... | Miami, Fla. | Electrical Equipment Co. | 750 | 286 | 1,050 |
| WQAN... | Seranton, Pa. | Seranton Times | 100 | 250 | 1,200 |
| WQAO... | Cliffside, N. J. | Calvary Baptist Church | 500 | 360 | 830 |
| WQJ... | Chicago, Ill. | Calumet Radio Broadcast Co. | 500 | 447.5 | 670 |
| WRAP... | Laporte, Ind. | Radio Club, Inc. | 100 | 224 | 1,340 |
| WRAH... | Providence, R. I. | Stanley Reed | 150 | 235 | 1,276 |
| WRAK... | Escanaba, Mich. | Economy Light Co. | 100 | 256 | 1,170 |
| WRAM... | Chillicothe, Ill. | Lambard College | 100 | 244 | 1,230 |
| WRAV... | Yellow Springs, Ohio | Antioch College | 100 | 263 | 1,140 |
| WRAW... | Reading, Pa. | Ave. Radio & Elec. Shop | 10 | 222 | 1,280 |
| WRAX... | Philadelphia, Pa. | Beracah Church, Inc. | 500 | 268 | 1,120 |
| WRBC... | Valparaiso, Ind. | Immanuel Lutheran Church | 500 | 278 | 1,090 |

Broadcast Stations in U. S., Revised to Dec. 31, 1926

| Call Signal | Location of Station | Owner of Station | Power (watts) | Wave length | Frequency (kilo-cycles) |
|-------------|-----------------------|------------------------------|---------------|-------------|-------------------------|
| WRC | Washington, D. C. | R. C. A. | 500 | 489.5 | 610 |
| WRCO | Raleigh, N. C. | Wynne Radio Co. | 100 | 252 | 1,190 |
| WREC | Coldwater, Miss. | Wootens Radio Co. | 10 | 254 | 1,180 |
| WRFO | Lansing, Mich. | Ren Motor Car Co. | 500 | 285.5 | 1,050 |
| WRFS | Wollaston, Mass. | H. L. Sawyer | 100 | 300 | 999 |
| WRHF | Washington, D. C. | Wash. Radio Hosp. Fund. | 50 | 254 | 1,170 |
| WRHM | Minneapolis, Minn. | Rosedale Hospital | 50 | 252 | 1,180 |
| WRK | Hamilton, Ohio | Doron Bros. Elec. Co. | 100 | 270 | 1,110 |
| WRM | Urbana, Ill. | Univ. of Ill. | 500 | 272 | 1,100 |
| WRMU | New York, N. Y. | A. H. Grebe Co., Inc. | 100 | 236 | 1,270 |
| WRNY | Coytesville, N. J. | Experimenter Pub. Co. | 500 | 274.8 | 902 |
| WRP | Dallas, Texas | City of Dallas | 500 | 246 | 1,220 |
| WRST | Bay Shore, N. Y. | Radiotel Mfg. Co. | 250 | 215.7 | 1,390 |
| WRVA | Richmond, Va. | Lazarus & Bro. Co. | 1,000 | 256 | 1,170 |
| WSAI | Cincinnati, Ohio | U. S. Playing Card Co. | 5,000 | 225.9 | 920 |
| WSAJ | Grove City, Pa. | Grove City College | 250 | 229 | 1,310 |
| WSAN | Allentown, Pa. | Allentown Call Pub. Co. | 100 | 229 | 1,310 |
| WSAR | Fall River, Mass. | Dougherty & Welch Elec. Co. | 100 | 284 | 1,180 |
| WSAV | Houston, Texas | C. W. Vick | 100 | 248 | 1,310 |
| WBAX | (Portable) | Zenith Radio Corp. | 100 | 268 | 1,120 |
| WBZ | Pomeroy, Ohio | Chase Electric Shop | 50 | 244 | 1,220 |
| WBR | Atlanta, Ga. | Atlanta Journal | 1,000 | 428.3 | 700 |
| WBSC | Chicago, Ill. | World Battery Co. | 1,000 | 268.3 | 1,040 |
| WRBF | St. Louis, Mo. | Stix, Baer Co. | 250 | 273 | 1,100 |
| WBBT | South Bend, Ind. | South Bend Tribune | 250 | 215 | 952 |
| WRDA | New York, N. Y. | City Temple | 250 | 243 | 1,140 |
| WSEC | Bay City, Mich. | World's Star Knitting Co. | 100 | 261 | 1,150 |
| WSM | Nashville, Tenn. | National Ins. Co. | 1,000 | 282 | 1,060 |
| WSMH | New Orleans, La. | Maison Blanche Bldg. | 500 | 219 | 940 |
| WSMH | Owosso, Mich. | Shattuck Music House | 20 | 240 | 1,250 |
| WRMK | Dayton, Ohio | S. M. K. Radio Corp. | 500 | 275 | 1,090 |
| WSOE | Milwaukee, Wis. | Sch. of Eng. of Milwaukee | 500 | 244 | 1,220 |
| WSRO | Hamilton, Ohio | Radio Co. (H. W. Fahrlander) | 100 | 255 | 1,190 |
| WSSH | Boston, Mass. | Framont Baptist Church | 100 | 251 | 1,150 |
| WSIU | Iowa City, Iowa | State Univ. of Iowa | 500 | 483.6 | 620 |
| WSEB | Buffalo, N. Y. | Seneca School | 50 | 299 | 1,370 |
| WSWE | Batavia, Ill. | Richmond Harris Co. | 1,000 | 276 | 1,090 |
| WTAR | Fall River, Mass. | F. R. Daily Herald Pub. Co. | 100 | 242 | 1,190 |
| WTAD | Carthage, Ill. | Robt. E. Compton | 50 | 224 | 1,270 |
| WTAG | Worcester, Mass. | Worcester Tel. Pub. Co. | 500 | 545 | 550 |
| WTAL | Toledo, Ohio | Toledo Radio & Elec. Co. | 10 | 252 | 1,190 |
| WTAM | Cleveland, Ohio | Willard Storage Bat. Co. | 2,500 | 289.4 | 770 |
| WTAQ | Eau Claire, Wis. | S. H. Van Gordon & Son | 100 | 254 | 1,180 |
| WTAR | Norfolk, Va. | Reliance Electric Co. | 100 | 281 | 1,150 |
| WTAW | College Station, Tex. | Agri. & Mech. Col. of Texas | 500 | 270 | 1,110 |
| WTAX | Streator, Ill. | Williams Hardware Co. | 50 | 221 | 1,300 |
| WTAZ | Lambertville, N. J. | Thomas J. McGuire | 15 | 281 | 1,150 |
| WTIC | Hartford, Conn. | Travelers Insurance Co. | 500 | 474 | 630 |
| WTRC | New York City | Republican Club | 30 | 240 | 1,250 |
| WWAE | Plainfield, Ill. | Electric Park | 10 | 284.4 | 780 |
| WWAO | Houghton, Mich. | Mich. Col. of Mines | 250 | 243 | 1,140 |
| WWI | Dearborn, Mich. | Ford Motor Co. | 500 | 266 | 1,130 |
| WWJ | Detroit, Mich. | Detroit News | 1,000 | 252.7 | 850 |
| WWL | New Orleans, La. | Loyola University | 100 | 275 | 1,090 |
| WWRL | Woodbake, N. Y. | Woodside Radio Lab. | 100 | 258 | 1,160 |

TUNING

(Continued from Page 5)

with the other dials. If, after you have placed your dials on the theoretically proper point and the station does not come in, slowly turn the dial back and forth until you get a strong whistle, and then very slowly moving the dial a fraction of an inch with each move,

turn until you get the station at its maximum. This is where the patience comes in, because if you will carefully tune your set until you get to the peak of oscillation, you will be able to bring in the station that you are looking for.

Again we reiterate: If your set is efficient and is capable of bringing in distant stations, all you require is patience and exactitude.

Broadcasting Stations of Canada

| Call Signal | Location of Station | Owner of Station | Power (watts) | Wave length | Frequency (kilo-cycles) |
|-------------|-------------------------|---|---------------|-------------|-------------------------|
| CFAC | Calgary, Alta | The Calgary Herald | 500 | 435 | 690 |
| CFCA | Toronto, Ont. | Star Pub. & Print. Co. | 500 | 357 | 840 |
| CFCF | Montreal, Que. | Marconi Wireless Tel. Co. of Canada, Ltd. | 1,650 | 411 | 730 |
| CFCK | Edmonton, Alta | Radio Supply Co., Ltd. | 100 | 517 | 580 |
| CFCN | Calgary, Alta | W. W. Grant Radio, Ltd. | 1,800 | 435 | 690 |
| CFCT | Victoria, B. C. | Geo. W. Deaville | 500 | 330 | 910 |
| CFCY | Charlottetown, P. E. I. | Island Radio Co. | 50 | 312 | 960 |
| CFCC | Brantford, Ont. | Brant Radio Supply Co. | 50 | 397 | 1,010 |
| CFCL | Prescott, Ont. | Radio Assn. of Prescott | 50 | 397 | 1,010 |
| CFQC | Saskatoon, Sask. | The Electric Shop, Ltd. | 500 | 330 | 910 |
| CFVC | Burnaby, B. C. | Int. Bible Students' Assn. | 500 | 411 | 730 |
| CFRC | Kingston, Ont. | Queen's University | 500 | 268 | 1,120 |
| CFXC | N. Westminister, B. C. | Westminster Trust Co. | 20 | 391 | 1,020 |
| CFYQ | Vancouver B. C. | Com. Radio, Ltd. | 500 | 411 | 730 |
| CHCY | Edmonton, Alta | Int. Bible Students' Assn. | 250 | 517 | 580 |
| CHIC | Toronto, Ont. | Northern Electric Co., Ltd. | 500 | 357 | 840 |
| CHNC | Toronto, Ont. | Toronto Radio Res. Society | 500 | 357 | 840 |
| CHNS | Halifax, Nova Scotia | Northern Electric Co. | 100 | 332 | 930 |
| CHUC | Saskatoon, Sask. | International Bible Students' Assn. | 500 | 330 | 910 |
| CHXC | Ottawa, Ont. | J. R. Booth, Jr. | 250 | 435 | 690 |
| CHYC | Montreal, P. Q. | Northern Electric Co., Ltd. | 750 | 411 | 730 |
| CJCA | Edmonton, Alberta | The Edmonton Journal, Ltd. | 500 | 517 | 580 |
| CJGC | London, Ont. | London Free Press Printing Co., Ltd. | 500 | 330 | 910 |
| CJOC | Lethbridge, Alta. | J. E. Palmer | 50 | 268 | 1,120 |
| CJSC | Toronto, Ont. | The Evening Telegram | 500 | 357 | 840 |
| CJWC | Saskatoon, Sask. | Wheaton Elec. Co., Ltd. | 250 | 330 | 910 |
| CJYC | Scarboro Bn., Ont. | Universal Radio of Canada | 500 | 391 | 1,030 |
| CKAC | Montreal, Que. | LaPresse Pub. Co., Ltd. | 1,200 | 411 | 730 |
| CKCD | Vancouver, B. C. | Vancouver Daily Province | 1,000 | 411 | 730 |
| CKCK | Regina, Sask. | Leader Pub. Co., Ltd. | 500 | 397 | 1,010 |
| CKCL | Toronto, Ont. | The Dominion Bat. Co., Ltd. | 500 | 357 | 840 |
| CKCO | Ottawa, Ont. | Dr. G. M. Goldert | 100 | 435 | 690 |
| CKCW | Burketon Jct., Ont. | Canadian Broadcast Corp. (not active) | 5,000 | 330 | 910 |
| CKFC | Vancouver, B. C. | Ninth Church of Canada | 500 | 411 | 730 |
| CKNC | Toronto, Ont. | The Can. Nat'l Carbon Co. | 500 | 357 | 840 |
| CKOC | Hamilton, Ont. | Wentworth Rad. Sup. Co., Ltd. | 50 | 341 | 880 |
| CKY | Winnipeg, Man. | Manitoba Tel. System | 100 | 384 | 780 |
| CNRA | Moncton, N. B. | Canadian Nat'l Railways | 500 | 322 | 930 |
| CNRC | Calgary, Alta | Canadian Nat'l Railways | 500 | 397 | 1,010 |
| CNRE | Edmonton, Alta | Canadian Nat'l Railways | 500 | 517 | 580 |
| CNRM | Montreal, P. Q. | Canadian Nat'l Railways | 1,000 | 411 | 730 |
| CNRO | Ottawa, Ont. | Canadian Nat'l Railways | 500 | 435 | 690 |
| CNRR | Regina, Sask. | Canadian Nat'l Railways | 500 | 312 | 960 |
| CNRS | Saskatoon, Sask. | Canadian Nat'l Railways | 500 | 330 | 910 |
| CNRT | Toronto, Ont. | Canadian Nat'l Railways | 500 | 357 | 840 |
| CNRV | Vancouver, B. C. | Canadian Nat'l Railways | 500 | 391 | 1,030 |
| CNRW | Winnipeg, Man. | Canadian Nat'l Railways | 500 | 384 | 780 |

Mexican Stations

| Call Signal | Location of Station | Owner of Station | Power (watts) | Wave length | Frequency (kilo-cycles) |
|-------------|---------------------|--------------------------------|---------------|-------------|-------------------------|
| AMB | Tla Juana, Mexico | | 301 | 100 | |
| CYA | Mexico City | Partido Liberal Avanzado | 100 | 540 | |
| CBY | Mexico City | El Buen Tono | 500 | 360 | |
| CYD | Mexico City | | — | 350 | |
| CYG | Mexico City | Secretaria de Guerra | 100 | — | |
| CYJ | Mexico | Mexico City | 1,000 | 410 | |
| CYL | Mexico City | El Universal | 500 | 360 | |
| CYO | Monterey | Constantino Tarnova, Jr. | 200 | 230 | |
| CYR | Mazatlan | Rosseter y Cia. | 250 | 440 | |
| CYN | Mexico City | Excelsior Parker | 500 | 323 | |
| CYZ | Mexico City | La Liguia del Radio | 100 | 400 | |
| CEP | Mexico City | Dpt. of Aviation, War Ministry | 100 | 510 | |
| CZA | Chihuahua | Mexican Government | 250 | 325 | |

British Stations

| Call Signal | Location | Operated by | | Power in Watts | Wave Length |
|-------------|----------------|--------------------------|--|----------------|-------------|
| 2 BD | Aberdeen | British Broadcasting Co. | | 1,500 | 481.8 |
| 2 BE | Belfast | British Broadcasting Co. | | 1,500 | 326.1 |
| 5 BT | Birmingham | British Broadcasting Co. | | 1,500 | 481.8 |
| 6 BM | Bournemouth | British Broadcasting Co. | | 1,500 | 306.1 |
| 2 BS | Bradford | British Broadcasting Co. | | 200 | 294.1 |
| 5 WA | Cardiff | British Broadcasting Co. | | 1,500 | 253 |
| 5 XX | Dundee | British Broadcasting Co. | | 200 | 288.5 |
| 2 DE | Daventry | British Broadcasting Co. | | 25,000 | 1600 |
| 2 EH | Edinburgh | British Broadcasting Co. | | 500 | 288.5 |
| 5 SG | Glasgow | British Broadcasting Co. | | 1,500 | 405.4 |
| 6 KH | Hull | British Broadcasting Co. | | 200 | 288.5 |
| 2 LS | Leeds | British Broadcasting Co. | | 200 | 297 |
| 6 LV | Liverpool | British Broadcasting Co. | | 200 | 288.5 |
| 2 LO | London | British Broadcasting Co. | | 2,000 | 361.4 |
| 2 ZY | Manchester | British Broadcasting Co. | | 1,500 | 284.6 |
| 5 NO | Newcastle | British Broadcasting Co. | | 1,500 | 312.5 |
| 5 NG | Nottingham | British Broadcasting Co. | | 200 | 288.5 |
| 5 PY | Plymouth | British Broadcasting Co. | | 200 | 288.5 |
| 6 FL | Sheffield | British Broadcasting Co. | | 200 | 288.5 |
| 6 ST | Stoke-on-Trent | British Broadcasting Co. | | 200 | 288.5 |
| 5 SX | Swansea | British Broadcasting Co. | | 200 | 288.5 |

Australian Stations

| Call Signal | Location | Owner of Station | Power (watts) | Wave length | Freq- uency (kilo- cycles) |
|-------------|------------------------|----------------------------------|---------------|-------------|----------------------------|
| 2FC | Sydney, N. S. W. | Farmer and Company, Ltd. | 5,000 | 1.100 | 261 |
| 2BL | Sydney, N. S. W. | Broadcasters, Ltd. | 1,500 | 353 | 857 |
| 2LO | Melbourne, Victoria | Australian Broadcastg. Co., Ltd. | 5,000 | 371 | 809 |
| 2AR | Melbourne, Victoria | Associated Radio Co., Ltd. | 1,600 | 484 | 789 |
| 5CL | Adelaide, S. Australia | Central Broadcasters, Ltd. | 5,000 | 395 | 927 |
| 6WF | Perth, West Australia | W. Australian Farmers, Ltd. | 5,000 | 1,250 | 240 |
| 7ZL | Hobart, Tasmania | Associated Radio Co., Ltd. | 3,000 | 535 | 769 |
| 4QG | Brisbane, Queensland | Government Radio Service | 5,000 | 385 | 779 |

Japan Stations

| Call Signal | Location | Operated by | Watts | Meter |
|-------------|----------|-------------------------------|-------|-------|
| JOCK | Nagoya | Nagoya Radio Broadcasting Co. | 1,500 | 360 |
| JOBK | Osaka | Osaka Radio Broadcasting Co. | 500 | 385 |
| JOAK | Tokyo | Tokyo Radio Broadcasting Co. | 1,000 | 375 |

ONLY \$3.00 A YEAR

Have RADIO DOINGS mailed to your home every week. Fill out blank below. Either mail to us, or your dealer will be glad to take care of it for you. Please indicate whether NEW or RENEWAL.

HORWOOD PUBLISHING CO., 527 Van Nuys Bldg., Los Angeles,
405 New Call Building, San Francisco, California.

Gentlemen: I enclose \$3.00, for which send me RADIO DOINGS for one year.
NEW—RENEWAL. =

Name _____

Address _____

Cuban Broadcasting Stations

| Call Signal | Location | Operated by | Wave length | Power (watts) |
|-------------|-----------------------|--------------------------------|-------------|---------------|
| 6EV..... | Caibarien | Maria J. Alvarez..... | 250 | 50 |
| 7AZ..... | Camaguey | Pedro Nogueros | 225 | 10 |
| 7SR..... | Camaguey | Salvador Rionda | 350 | 500 |
| 6KW..... | Central Tuinicu | Frank H. Jones..... | 340 | 100 |
| 6YR..... | Camajuani | Diego Iborra | 200 | 20 |
| 6JK..... | Central Tuinicu | Frank H. Jones..... | 275 | 100 |
| 7BY..... | Ciego de Avila..... | Eduardo V. Figueres..... | 235 | 20 |
| 6JG..... | Cienfuegos | Eligio Cobelo Ramirez..... | 275 | 10 |
| 6BY..... | Cienfuegos | Jose Ganduxe | 200 | 100 |
| 2HP..... | Havana | Credito y Construcciones Co... | 295 | 100 |
| 2JP..... | Havana | Julio Power | 270 | 20 |
| 2XX..... | Havana | Antonio A. Ginard..... | 150 | 5 |
| 2CX..... | Havana | Frederick W. Borton..... | 230 | 10 |
| 2AB..... | Havana | Alberto S. Bustamente..... | 235 | 10 |
| PWX..... | Havana | Cuban Telephone Co..... | 400 | 500 |
| 2EP..... | Havana | El Pala | 455 | 400 |
| 2BB..... | Havana | Bernardo Barrie | 255 | 15 |
| 2MG..... | Havana | Manuel y Guillermo Salas..... | 280 | 20 |
| 20K..... | Havana | Mario Garcia Velez..... | 260 | 100 |
| 20L..... | Havana | Oscar Collado Orta..... | 300 | 100 |
| 2TW..... | Havana | Roberto E. Ramirez..... | 230 | 20 |
| 2PK..... | Havana | George A. Lindeaux..... | 195 | 10 |
| 5EV..... | Matanzas | Leopoldo T. Figueroa..... | 340 | 10 |
| 6HS..... | Sagua la Grande..... | Santiga Ventura | 200 | 10 |
| 8FU..... | Santiago | Andress Vinent | 225 | 15 |
| 8BY..... | Santiago | Albert Ravelo | 250 | 100 |
| 8HS..... | Santiago | Guillermo Polanco | 300 | 20 |



List \$18.50

Announcing

the New

SUNSET SPEAKER

AT LAST—A Speaker that fits into home surroundings. Designed by a famous artist. Covered entirely with silk to match your home furnishings. Its wonderful tone quality is only surpassed by its beauty.

Ask Your Dealer

WESTERN MANUFACTURERS COMPANY

20 East Jackson Blvd.
Chicago, Ill.

VAndike
6 2 7 3

1228 West Seventh St.
Los Angeles, Cal.

South American Stations

| Call Signal | Location | Operated by | Power (watts) | Wave length |
|------------------|--------------------|-------------------------------------|---------------|-------------|
| ARGENTINE | | | | |
| LON | Buenos Aires | Radio Titania | 500 | 301.0 |
| LOO | Buenos Aires | Radio Prieto | 1000 | 250 |
| LOQ | Buenos Aires | Tomas Torres | 1000 | 206.3 |
| LOR | Buenos Aires | Diario "Critica" | 1000 | 322 |
| LOS | Buenos Aires | Municipality of Buenos Aires | 5000 | 285.7 |
| LOY | Buenos Aires | Francisco J. Brusa | 1000 | 352.0 |
| LOW | Buenos Aires | Grand Splendid | 1000 | 300 |
| LOX | Buenos Aires | Radio Cultura | 500 | 375 |
| LOY | Buenos Aires | Sociedad Radio Nacional | 1000 | 315.2 |
| LOZ | Buenos Aires | "La Nacion" Soc. A. B. C. | 1000 | 332.3 |
| H2 | Buenos Aires | Gino Bocel Hnos. | 100 | 375 |
| A11 | Buenos Aires | Gino Bocel Hnos. | | |
| A1 | Buenos Aires | Sociedad Radiotelefonica | | |
| B1 | Buenos Aires | Francisco J. Brusa | 1000 | |
| '1 | Buenos Aires | Facultad de Ciencias Medicas | | |
| '3 | Buenos Aires | Departamento Nac'l de Higien | | |
| 114 | Cordoba | Antonio Vanelli | 20 | 375 |
| | Cordoba | Sociedad Radio Com. de Cordoba | 100 | 381 |
| HAS | Cordoba | Jorge Corn | 30 | 255 |
| H8 | Cordoba | Diario "Los Principios" | 30 | 250 |
| DA-1 | Hurlingham, P.N.I. | Felix Gunther | | |
| LDP | La Plata, PCH. | Universidad Nacional | 1000 | 428 |
| LOV | Mendoza | Ministerio de Obras Publicas | 500 | 380 |
| M6 | Mendoza | Podro B. Baldassarre | 100 | 348 |
| LOT | Olivos, FCCA. | Eugenio A. Vautier | 1000 | 372.7 |
| H5 | Rio Cuarto | Arturo Rodriguez | 100 | 375 |
| P1 | Rosario | Manuel Paganolo | 100 | 360 |
| DS | San Fernando, FCCA | Americo Liberti | 100 | 335.2 |
| P1 | Sante Fe | Jose Roca Soler | 20 | 375 |
| V2 | Sante Fe | Sociedad Rural de Cerealistas | 100 | 370 |
| BRAZIL | | | | |
| | Bahia | Radio Sociedade de Bahia | 500 | 250—350 |
| | Bello Horizonte | Radio Sociedade de Minas Gerais | 500 | 400 |
| | Ceara | Radio Club Cearense | 50 | |
| | Curytiba | Lyvio Morais | | |
| | Fortaleza | Radio Club | 200 | |
| | Goyanna | Benedicto Ravello | | |
| | Matto Grosso | Radio Club de Campo Grande | | |
| | Minas Geraes | Juls de Fora | 100 | |
| | Para | Radio Club de Para. | 100 | |
| | Parana | | 200 | 370 |
| | Parahyba | Radio Sociedade de Parahyba | | |
| | Pelotas | Radio Sociedade Pelotense | | |
| | Penedo | A. G. Oliveira | | |
| | Pernambuco | Radio Club de Pernambuco | 1000 | 310 |
| | Pernambuco | Cia. Radiotelegrafica Brasileira | 500 | 250—300 |
| | Pernambuco | Radio Sociedade de Jader de Andrada | | |
| | Pernambuco | Radio Sociedade de Garanhuns | | |
| | Petropolis | Radio Club de Petropolis | | |
| RRR | Porto Alegre | Radio Sociedade Riograndense | 50 | 391 |
| RQIR | Praia Vermelha | Radio Club do Brasil | 500 | 320 |
| | Rio de Janeiro | Radio Sociedade de Rio de Jan. | 1000 | 381 |
| SPE | Rio de Janeiro | Radio Club do Brasil | 500 | 312 |
| | Rio de Janeiro | National Telegraph Service | 300 | 450 |
| | Sao Paulo | Sociedade Radio Educadora | 1000 | 310 |
| HQIG | Sao Paulo | Sociedade Radio Educadora Paulista | 1000 | 450 |
| | Sao Paulo | Radio Club de Sao Paulo | 100 | 250 |
| | Sao Paulo | Radio Bandeirantes | 50 | 370 |
| | Sao Paulo | Dias Carneiro & Cia. | 100 | 290—320 |
| CHILE | | | | |
| | San Eugenio | Kens Imeaud | 20 | 25 |
| CBC | Santiago | Radio Corporation of Chile | 400—600 | 250 |
| CHAC | Santiago | Chilean Radiophone Club | 200 | 200 |
| CLAA | Santiago | Ferrocarril Transandino Chileno | | 200 |
| CMAA | Santiago | Carlos Ruiz Walsen | 240 | 20 |
| CMAR | Santiago | Sociedade Radio Chilena | 480 | 1500 |
| CMAD | Santiago | Castagneto Felli | 220 | 100 |
| CMAF | Santiago | Ministerio de Higien | 400 | 1250 |
| CRC | Santiago | Sociedade Broadcasting de Chile | 285 | 350 |
| CMAC | Santiago | "El Mercurio" | 300 | 1000 |
| CMAE | Santiago | Radio Comercial | 280 | 500 |
| CMAG | Santiago | Pedro Arroyo | 250 | 250 |
| CMAL | Santiago | Cia. Radio Transandino | 200 | 100 |
| CMAU | Santiago | Universidad de Chile | 440 | 100 |
| CRU | Santiago | | 420 | |
| HC | Santiago | | 250 | 50 |
| CNA | Santiago | Harvey Diamond | | |
| CNAC | Santiago | Jose Bellata | | |
| CNAT | Tena | Ministerio de Relaciones Exter | 245 | 1000 |

Sources of Interference

We receive numerous inquiries asking for the various sources of interference. Through the courtesy of "Popular Radio" we give a list of fifty-three sources of interference which may be found in the receiver itself or from the outside.

In the Receiver itself or in the Apparatus Connected to it:

1. An improperly tuned receiver.
2. A loose connection in the receiver or broken wires in the headphone or loudspeaker cord.
3. A defective grid leak.
4. A defective tuning condenser—a momentary shorting of condenser plates.
5. A fixed condenser with defective insulation.
6. Loose connections at the batteries.
7. Discharged or weak batteries.
8. "B" battery eliminators (in the electrolytic type under certain conditions).
9. A bad socket.
10. A bad tube.

From Apparatus in the Same House with the Receiver—or in a Neighbor's House:

11. Vacuum cleaners.
12. Sewing machine motors or any commutator motor.
13. A violet-ray machine.
14. Ozonators.
15. Door bells and buzzers.
16. Switching of lamps or other electrical devices.
17. Electrical heating pads with thermostat control.
18. Oil burners that use spark ignition; (certain types.)

19. Washing machines with split-phase type of motor—if the starting switch is defective.
20. Battery chargers of the vibrating type.
21. Battery chargers of the electrolytic type (under certain conditions).
22. Elevator controllers and motors of the commutator type.
23. Bad contact in switch, fuse socket, or its wiring near lighting wires

From Outside Sources:

25. Atmospheric static
26. Regenerative receivers.
27. Sign flashers
28. Commercial wireless (code) stations.
29. Amateur wireless stations.
30. Induction coils.
31. Electric street cars
32. Defective rail bonds on street railway systems.
33. Heterodyning of broadcasting stations.
34. Overlapping of broadcasting stations.
35. Telephone ringers.
36. Induction from telephone and telegraph lines.
37. Motion picture machines that use arc lamps.
38. Motors and generators of the commutator type.
39. Electric welding apparatus.
40. X-ray machines.
41. Static machines.
42. Static produced by belts.
43. Electrical manufacturing processes.
44. Induction from high potential circuits.
45. Arcing wire in trees and other grounded objects.
46. Leaking insulators on power circuits.
48. Loose street lamps in sockets
49. Bad contacts in switches
50. Lightning arresters.
51. Smoke or dust precipitators.
52. Defective transformers
53. Defective street light rectifiers

The Sargent Infradyne

The Sargent Infradyne, invented and put on the market by Mr. E. M. Sargent of Oakland, has taken the DX fans by storm.

Tests carried out by experts have proven the Infradyne to be one of the best sets for distance reception.

If you will follow the diagram closely, as shown, making sure that all connections are properly soldered and the set carefully built with the parts described below, you will, without a doubt, have a receiver which will give you great satisfaction.

One Remler Infradyne amplifier; 1 Continental triple vernier condenser; 1 Remler .00035 condenser; 1 tapped inductance (see text for constructional details); 1 Gen. Radio No. 301 30 ohm rheostat; 1 set No. 33 Thorola doughnuts; 2 National type B CCW dials; 7 Benjamin UX sockets; 1 112 Amperite; 2 1-A Amperites; 1 6V-199 Amperite;

1 30 ohm U. S. L. rheostat; 1 10 ohm U. S. L. rheostat; 1 Centralab 50,000 ohm Radiohm; 3 2-in. rheostat dials; 1 Yaxley filament switch; 1 single closed electrads jack; 1 single open jack; 1 Jewell No. 135 0-5 D. C. voltmeter; 1 Electrads grid leak mounting; 1 Electrads fixed condenser mounting; 1 1-megohm Electrads fused metallic leak or Arthur H. Lynch fixed resistor; 1 2-megohm Dubilier leak or Arthur H. Lynch fixed resistor; 1 Dubilier .0001 mfd. condenser; 1 Dubilier 1 mfd. condensers; 2 Dubilier .0005 condensers, 1 with clips; 1 Dubilier .00025 condenser; 9 Eby binding posts; 1 Formica walnut panel 3/16x7x30; 1 redwood baseboard 3/4x10x34; 2 Amertran De Luxe transformers.

From careful test and construction the Infradyne can be recommended to those who care to and are willing to do careful work.

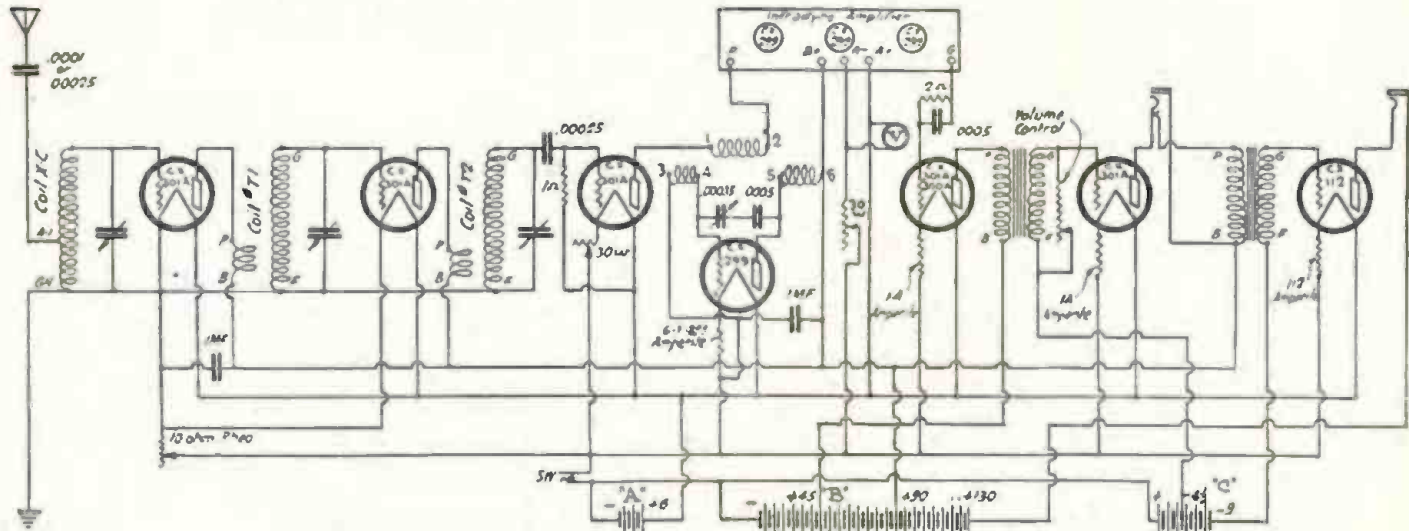
Power Amplifier and A. C. Current Supply

The demand for newer tubes of a capacity to handle larger output with less distortion has brought with it the need of more economical current supply than that provided by the Dry Batteries. The Storage Battery provides the ideal current supply, but there are many disadvantages, such as dangers of acid and the trouble of keeping the battery at full charge. A power amplifier and A. C. current supply built from the following diagram, if built correctly, will give you a constant source of power, and if properly taken care of, will cause a minimum of trouble.

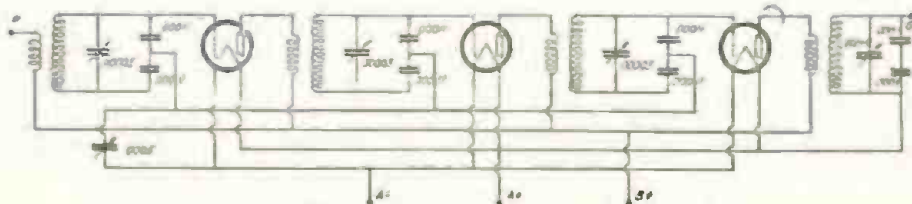
The outfit has been built of the following parts and give a high degree of satisfaction: A. C. transformer Amer-

tran type PF 52, chokes Amertran type 854, condensers C1 and C3, No. 769, 2 microfarads, C2 and C8 type 770, 4 microfarads Dubilier, while C4-5-6-7 type 766 2 microfarads same make. Do not use lower capacities, and if you have any spare cash, increase the capacities all around 50 per cent, and you will not regret it. R1-2-3-4-5 should be Ward Leonard vitrohms type C resistor or Aerovox Craig register type 980. R6 should be Bradley ohm No. 25. The input transformer should be the second stage De Luxe Amertran. Sockets some good type of UX or CX. The power tube UX-210 or CX-310, and the rectifier tube should be either CX-316B or UX-316B.

Infradyne Receiver and Amplifier Unit

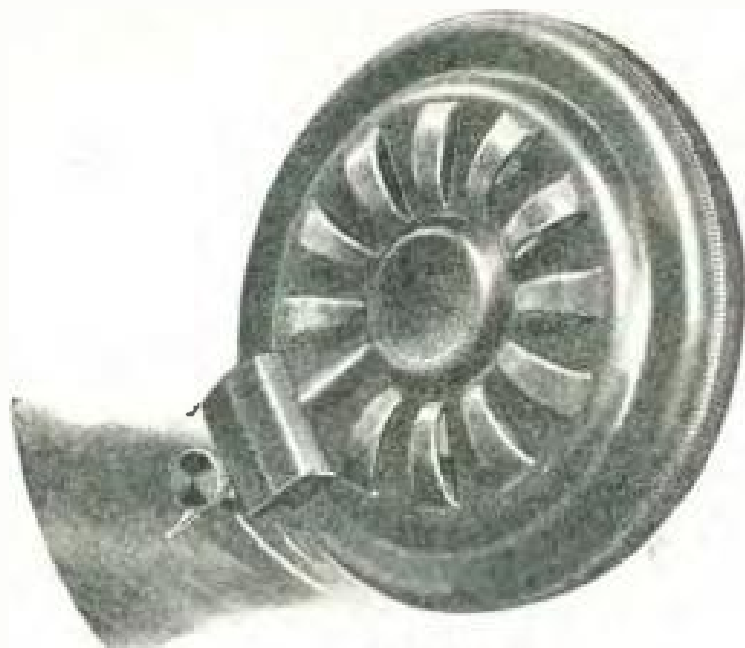


Circuit Diagram of Infradyne Receiver. (Correction: 6V-299 should be 6V-199).



Circuit Diagram of Infradyne Amplifier Unit.

ULTRA- *Phonic* Reproducer



ACTUAL SIZE

In a Jiffy Transforms Your Phonograph

[INTO ONE WHOSE
AMAZING TONE IS
EXCELLED ONLY BY
THE SENSATIONAL
NEWLY DEVELOPED
PHONOGRAPHS]

On Sale at All Radio and Music Stores

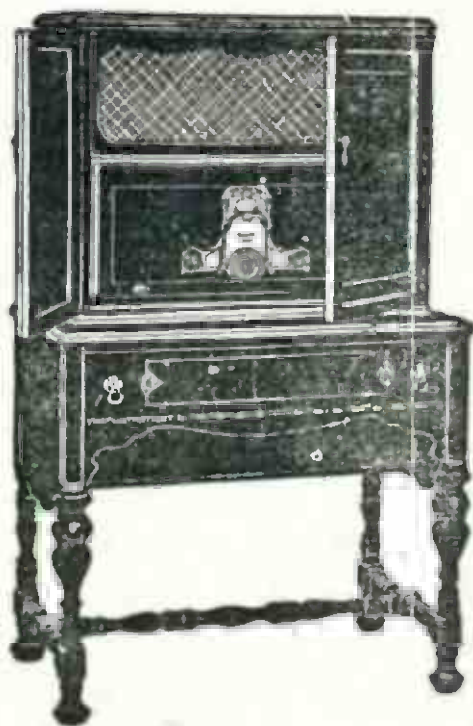
LEO J. MEYBERG COMPANY

Exclusive Distributors for California

**1022 South Wall Street
Los Angeles**

**973 Mission Street
San Francisco**

Federal Ortho-Sonic Radio



Model E-40

Price without
accessories

\$300

To see and hear a FEDERAL ORTHO-SONIC Receiver is to appreciate what Radio has in store for YOU.

Unequaled tone quality, simplicity of control, beauty of appearance—all are yours if you purchase

A FEDERAL ORTHO-SONIC

Five, Six and Seven-Tube Models. Priced from \$100 to \$400

Four Distinctive Custom Built Art Models

Priced from \$600 to \$1000



Exclusive Wholesale Distributors

YALE RADIO ELECTRIC CO.

1111 Wall St., Los Angeles, Calif. Phone WEStmore 3351