

1'6

INTERNATIONAL

WORLD RADIO STATION LIST

Frequencies • Wavelengths • Powers



3,000

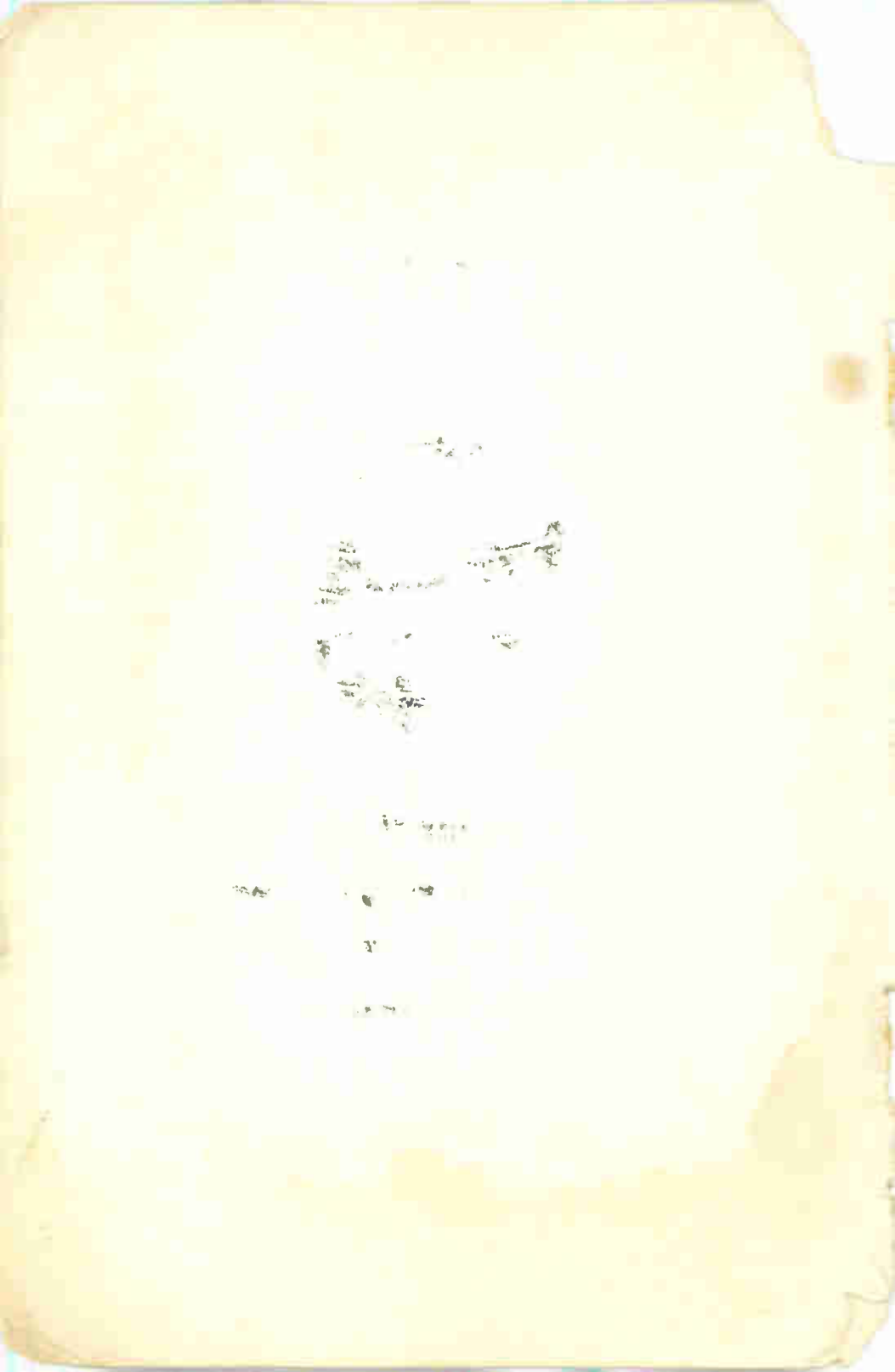
**LONG, MEDIUM
& SHORT WAVE
STATIONS**

1949 — 1951

edition

**COPENHAGEN
PLAN
INCLUDED**

Nº 84



INTERNATIONAL
WORLD RADIO
STATION LIST

Compiled by

BERNARD B. BABANI

————— :: —————

3,000 LONG, MEDIUM & SHORT WAVE STATIONS

1949 — 1951 edition

(Copenhagen plan Included)

————— :: —————

BERNARDS (Publishers) LTD.

LONDON W.6

FIRST PUBLISHED 1949

Contents

INTERNATIONAL PREFIXES FOR IDENTIFYING BROADCASTING STATIONS	- - - - -	5
1949 LONG WAVE BROADCASTING STATIONS OF EUROPE, NEAR EAST & N. AFRICA	- - - - -	6
1949 MEDIUM WAVE BROADCASTING STATIONS OF EUROPE, NEAR EAST & N. AFRICA	- - - - -	7
COPENHAGEN PLAN IN FORCE AFTER MARCH 1950 OF LONG & MEDIUM WAVE STATIONS IN EUROPE, NEAR EAST & NORTH AFRICA	- - - - -	13
SHORT WAVE STATIONS OF THE WORLD	- - - - -	19

Wavelength and Frequency Conversion

Broadcast receivers have their tuning scales calibrated either in metres, kilocycles, megacycles or with the names of the principal stations. Kilocycle markings, where used, are as a rule confined to the medium- and long-wave bands, while either metres or megacycles are used on the short waves. Thus in order to locate a particular station on the dial of a receiver it may be necessary to convert the available wavelength, or frequency, figures into the form it appears on the dial of the receiver.

There is a simple relationship between these quantities as both wavelength and frequency are determined by the velocity of propagation of radio waves in space, this relationship is

$$\text{Wavelength} = \frac{\text{Velocity}}{\text{Frequency}} \quad \text{or} \quad \text{Frequency} = \frac{\text{Velocity}}{\text{Wavelength}}$$

As the velocity of propagation in space is, in round figures, 300,000,000 metres per second, any of the quantities—metres, kilocycles or megacycles—are readily converted into the other forms by means of the following formulae.

Kilocycles to Metres	Megacycles to Metres
$\text{Metres} = \frac{300,000}{\text{Frequency (kc/s)}}$	$\text{Metres} = \frac{300}{\text{Frequency (Mc/s)}}$
Metres to Kilocycles	Metres to Megacycles
$\text{kc/s} = \frac{300,000}{\text{Wavelength (metres)}}$	$\text{Mc/s} = \frac{300}{\text{Wavelength (metres)}}$

British Amateur Transmitting Frequencies

Mc/s	Max. Power (W)	Mc/s	Max. Power (W)
1.75 — 2.0	10	58.5 — 60.0	25
3.5 — 3.635	150	145 — 146	25
3.685 — 3.8	150	420 — 460	10
7.0 — 7.3	150	2,300 — 2,450	25
14.0 — 14.4	150	Frequencies for Radio Control	
28.0 — 30.0	150	27.66 — 28.0	5
		460.0 — 461.0	5

INTERNATIONAL PREFIXES FOR IDENTIFYING BROADCASTING STATIONS

Prefix	Country	Prefix	Country	Prefix	Country	Prefix	Country
AAA-ALZ	USA	HHA-HHZ	Haiti	RAA-RZZ	USSR	YNA-YNZ	Nicaragua
AMA-AOZ	(Not allocated)	HIA-HIZ	Dominican Republic	SAA-SMZ	Sweden	YOA-YRZ	Rumania
APA-ASZ	Pakistan	HJA-HKZ	Colombia	SNA-SRZ	Poland	YSA-YSZ	El Salvador
ATA-AWZ	India	HLA-HMZ	Korea	SSA-SUZ	Egypt	YTA-YUZ	Yugoslavia
AXA-AXZ	Australia	HNA-HNZ	Iraq	SVA-SZZ	Greece	YYA-YYZ	Venezuela
AYA-AZZ	Argentina	HOA-HPZ	Panama	TAA-TCZ	Turkey	YZA-YZZ	Yugoslavia
BAA-BZZ	China	HQA-HRZ	Honduras	TDA-TDZ	Guatemala	ZAA-ZAZ	Albania
CAA-CEZ	Chile	HSA-HSZ	Siam	TEA-TEZ	Costa Rica	ZBA-ZJZ	British Colonies, Protectorates
CFA-CKZ	Canada	HTA-HTZ	Nicaragua	TFA-TFZ	Iceland	ZKA-ZMZ	New Zealand
CLA-CMZ	Cuba	HUA-HUZ	El Salvador	TGA-TGZ	Guatemala	ZNA-ZOZ	British Colonies, Protectorates
CNA-CNZ	Morocco	HVA-HVZ	Vatican City State	THA-THZ	France, Colonies, Protectorates	ZPA-ZPZ	Paraguay
COA-COZ	Cuba	HWA-HYZ	France, Colonies, Protectorates	TIA-TIZ	Costa Rica	ZQA-ZQZ	British Colonies, Protectorates
CPA-CPZ	Bolivia	HZA-HZZ	Saudi Arabia	TJA-TJZ	France, Colonies, Protectorates	ZRA-ZUZ	Union of South Africa
CQA-CRZ	Portuguese Colonies	IAA-IZZ	Italy and Colonies	UAA-UQZ	USSR	ZVA-ZZZ	Brazil
CSA-CUZ	Portugal	JAA-JSZ	Japan	URA-UTZ	Ukraine	2AA-2ZZ	Great Britain
CVA-CXZ	Uruguay	JTA-JVZ	Outer Mongolia	UUA-UZZ	USSR	3AA-3AZ	Monaco
CYA-CZZ	Canada	JWA-JXZ	Norway	VAA-VGZ	Canada	3BA-3FZ	Canada
DAA-DMZ	Germany	JYA-JZZ	(Not allocated)	VHA-VNZ	Australia	3GA-3GZ	Chile
DNA-DQZ	Belgian Congo	KAA-KZZ	USA	VOA-VOZ	Newfoundland	3HA-3UZ	China
DRA-DTZ	Belorussia	LAA-LNZ	Norway	VPA-VSZ	British Colonies, Protectorates	3VA-3VZ	France, Colonies, Protectorates
DUA-DZZ	Philippines	LOA-LWZ	Argentina	VTA-VWZ	India	3WA-3XZ	(Not allocated)
EAA-EHZ	Spain	LXA-LXZ	Luxembourg	VXA-VYZ	Canada	3YA-3YZ	Norway
EAI-EJZ	Ireland	LYA-LYZ	Lithuania	VZA-VZZ	Australia	3ZA-3ZZ	Poland
EKA-EKZ	USSR	LZA-LZZ	Bulgaria	WAA-WZZ	USA	4AA-4CZ	Mexico
ELA-ELZ	Liberia	MAA-MZZ	Great Britain	XAA-XIZ	Mexico	4DA-4IZ	Philippines
EMA-EOZ	USSR	NAA-NZZ	USA	XJA-XOZ	Canada	4JA-4LZ	USSR
EPA-EQZ	Iran	OAA-OCZ	Peru	XPA-XPZ	Denmark	4MA-4MZ	Venezuela
ERA-ERZ	USSR	ODA-ODZ	Lebanon	XQA-XRZ	Chile	4NA-4OZ	Yugoslavia
ESA-ESZ	Estonia	OEA-OEZ	Austria	XSA-XSA	China	4PA-4SZ	British Colonies, Protectorates
ETA-ETZ	Ethiopia	OFA-OJZ	Finland	XTA-XWZ	France, Colonies, Protectorates	4TA-4TZ	Peru
EUA-EZZ	USSR	OKA-OMZ	Czechoslovakia	XXA-XXZ	Portuguese Colonies	4UA-4UZ	United Nations
FAA-FZZ	France, Colonies, Protectorates	ONA-OTZ	Belgium, Colonies	XYA-XYZ	Burma	4VA-4VZ	Haiti
GAA-GZZ	Great Britain	OUA-OZZ	Denmark	YAA-YAZ	Afghanistan	4WA-4WZ	Yemen
HAA-HAZ	Hungary	PAA-PIZ	Netherlands	YBA-YHZ	Netherlands Indies	4XA-4ZZ	(Not allocated)
HBA-HBZ	Switzerland	PJA-PIZ	Curaçao	YIA-YIZ	Iraq	5AA-5ZZ	(Not allocated)
HCA-HDZ	Ecuador	PKA-POZ	Netherlands Indies	YJA-YJZ	New Hebrides	6AA-6ZZ	(Not allocated)
HEA-HEZ	Switzerland	PPA-PYZ	Brazil	YKA-YKZ	Syria	7AA-7ZZ	(Not allocated)
HFA-HFZ	Poland	PZA-PZZ	Surinam	YLA-YLZ	Latvia	8AA-BZZ	(Not allocated)
HGA-HGZ	Hungary	QAA-QZZ	(Service abbreviations)	YMA-YMZ	Turkey	9AA-9ZZ	(Not allocated)

1949 LONG WAVE BROADCASTING STATIONS

of

EUROPE, NEAR EAST & N. AFRICA

Metres	Kc/s	Power KW/s	Town	Country	Log	Metres	Kc/s	Power KW/s	Town	Country	Log
1961	153	100	KAUNAS	USSR		968	310	1.5	JOENSUU	Finland	
1935	155	10	PRAGUE	Czechoslovakia		864	347	1.5	FINMARK	Norway	
1875	160	10	KOOTWITZ	Holland		845	355	1.5	BERGEN	Norway	
1875	160	150	BRASOV	Rumania		840	357	5	VORONESH	USSR	
1875	160	150	LAHTI	Finland		779	385	25	KHARKOV	USSR	
1796	167	75	OTTRINGHAM	England		765	392	25	BANSKÁ-BYSRICA	Czechoslovakia	
1724	174	500	MOSCOW	USSR		765	392	10	LULEÅ	Sweden	
1648	182	120	ANKARA	Turkey		751	400	15	PETROSAVODSK	USSR	
1648	182	75	STRASBOURG	France		722	415	5	ÖSTERSUND	Sweden	
1571	191	100	DEUTSCHLANDSENDER	Germany		693	433	10	ULEABORG	Finland	
1500	200	150	DROITWICH	England							
1442	208	100	LENINGRAD	USSR							
1389	216	150	MOTALA	Sweden							
1375	217	5	BERLIN	Germany							
1339	224	10	WARSAW	Poland							
1293	232	100	MOSCOW	USSR							
1293	232	150	LUXEMBOURG	Luxembourg							
1250	240	60	KALUNDBORG	Denmark							
1210	248	150	KIEV	USSR							
1186	253	10	BODÖ	Norway							
1154	260	25	BERGEN	Norway							
1154	260	60	OSLO	Norway							
1115	269	60	MINSK	USSR							
1107	271	100	REYKJAVIK	Iceland							
1079	278	2.5	GYDANIA	Poland							
1056	284	25	BERLIN	Germany							
1056	284	30	KAZAN	USSR							
1028	292	10	TROMSÖ	Norway							

1949 MEDIUM WAVE BROADCASTING STATIONS

of

EUROPE, NEAR EAST & N. AFRICA

Metres	Kc/s	Power KW/s	Town	Country	Log	Metres	Kc/s	Power KW/s	Town	Country	Log
583	514	15	PLZEN	Czechoslovakia		499	601	15	ATHENS	Greece	
578	519	10	INNSBRÜCK	Austria		499	601	10	FRANKFURT	Germany	
578	519	5	DORNBIRN	Austria		499	601	20	RABAT	Morocco	
578	519	1	HAMAR	Norway		499	601	10	SUNDSVALL	Sweden	
569	527	1	LIUBLJANA	Yugoslavia		492	610	100	FLORENCE	Italy	
569	527	20	KUOPIO	Finland		488	615	1.5	EIDAR	Iceland	
569	527	15	KRANJ	Yugoslavia		484	620	20	BRUSSELS	Belgium	
569	527	10	BREMEN	Germany		484	620	12	CAIRO	Egypt	
566	530	2.5	KAISERSLAUTEN	Germany		484	620	100	MOSCOW	USSR	
560	536	25	VILNA	USSR		477	629	20	ZAGREB	Yugoslavia	
560	536	20	BOLZANO/BOZEN	Italy		477	629	20	KRISTIANSUND	Norway	
560	536	5	—	Sardinia		477	629	45	LISBON	Portugal	
554	541	5	KALUNDBORG	Denmark		477	629	25	BERLIN	Germany	
549	546	50	BUDAPEST	Hungary		477	629	100	VIGRA	Norway	
540	556	40	ROSTOV	USSR		477	629	1	LINZ	Austria	
540	556	100	BEROMÜNSTER	Switzerland		470	638	120	PRAGUE	Czechoslovakia	
532	565	100	ATHLONE	Eire		463	648	100	LIMOGES	France	
532	565	10	PALERMO	Sicily		456	657	100	NORDEN	Germany	
531	565	2.5	DRESDEN	Germany		450	665	5	MARIBOR	Yugoslavia	
531	565	1.5	KLAGENFURT	Austria		450	665	1.5	AJDOVSCINA	Yugoslavia	
531	565	1.5	GRAZ	Austria		449	668	100	MOORSIDE EDGE	England	
531	565	10	PALERMO	Sicily		443	677	100	SOTTENS	Switzerland	
522	574	100	STUTTGART	Germany		437	686	20	MADRID	Spain	
514	583	20	DROITWICH	England		437	686	20	BELGRADE	Yugoslavia	
514	583	30	RIGA	USSR		432	695	100	PARIS	France	
507	592	10	VIENNA	Austria		426	704	50	STOCKHOLM	Sweden	
507	592	2.5	PARIS	France		426	704	60	ANDORRA	Andorra	
507	592	2	DAMASCUS	Syria		426	704	1	MALMBERGET	Sweden	

1949 MEDIUM WAVE STATIONS (continued)

Metres	Kc/s	Power KW/s	Town	Country	Log	Metres	Kc/s	Power KW/s	Town	Country	Log
422	712	75	MOSCOW	USSR		363	827	5	SIGMARINGEN	Germany	
420	713	100	ROME	Italy		361	832	10	QUIMPER	France	
415	722	100	BERLIN	Germany		361	832	75	MOSCOW	USSR	
415	722	15	LISBON	Portugal		361	832	1	GRENOBLE	France	
415	722	60	HILVERSUM	Holland		361	832	.5	MONTPELLIER	France	
412	730	5	BEIRUT	Lebanon		357	841	100	BERLIN	Germany	
410	731	100	MONTE CARLO	Monaco		353	850	25	SARAGOSSA	Spain	
410	731	1.5	ASSIUT	Egypt		353	850	100	STAVANGER	Norway	
410	731	7.5	SEVILLE	Spain		353	850	100	SOFIA	Bulgaria	
410	731	25	TALLINN	USSR		349	859	25	SIMFEROPOL	USSR	
405	740	100	MUNICH	Germany		349	859	20	STRASBOURG	France	
400	749	75	LENINGRAD	USSR		346	868	6	POZNAN	Poland	
400	749	20	MARSEILLES	France		346	868	10	BRUSSELS	Belgium	
396	758	10	MADRID	Spain		346	868	1.5	RABAT	Morocco	
396	758	50	WARSAW	Poland		346	868	1	VIENNA	Austria	
391	767	2.5	ABERDEEN	Scotland		342	877	100	BROOKMANS PARK	England	
391	767	10	SOFIA	Bulgaria		339	886	100	ALPENLAND	Austria	
391	767	60	WESTERGLEN	Scotland		335	895	35	TURKU	Finland	
391	767	2.5	RIJICA	Yugoslavia		335	895	100	LYONS	France	
391	767	60	BURGHEAD	Scotland		332	904	50	HAMBURG	Germany	
387	776	10	PARIS	France		332	904	100	COLOGNE	Germany	
382	785	80	LEIPZIG	Germany		328	913	100	TOULOUSE	France	
377	795	10	LWOW	USSR		325	922	100	BRNO	Czechoslovakia	
377	795	7.5	BARCELONA	Spain		325	922	20	BRUSSELS	Belgium	
373	804	1	WREXHAM	Wales		322	932	20	KOMAROV	Czechoslovakia	
373	804	60	WASHFORD	England		321	935	5	BELGRADE	Yugoslavia	
373	804	10	PENMON	Wales		319	941	10	GOTHENBURG	Sweden	
373	804	2.5	SALONIKA	Greece		319	941	20	ALGIERS	Algeria	
368	814	50	MILAN	Italy		316	950	50	WROCLAW	Poland	
364	823	20	TRONDHEIM	Norway		316	950	1	HOF	Germany	
364	823	100	TUNIS	Tunisia		316	950	80	MOSCOW	USSR	
364	823	15	BUCHAREST	Rumania		316	950	2.5	NÜRNBERG	Germany	
363	827	20	FREIBURG	Germany		313	959	20	NANCY	France	
363	827	2.5	BADEN-BADEN	Germany		312	961	1	NAMSOS	Norway	

1949 MEDIUM WAVE STATIONS (continued)

Metres	Kc/s	Power KW/s	Town	Country	Log	Metres	Kc/s	Power KW/s	Town	Country	Log
310	968	20	PAU	France		276	1087	10	SARAJEVO	Yugoslavia	
307	977	100	START POINT	England		276	1087	1.5	FEZ	Morocco	
304	986	25	TORUN	Poland		276	1087	1	CONSTANTINE	Algeria	
304	986	5	GENOA	Italy		274	1095	10	HANOVER	Germany	
304	986	80	TURIN	Italy		274	1095	20	LANGENBERG	Germany	
301	995	120	HILVERSUM	Holland		274	1095	1.5	BERLIN	Germany	
299	1004	1	CASABLANCA	Morocco		274	1095	10	ELMSHORN	Germany	
299	1004	50	BRATISLAVA	Czechoslovakia		272	1104	5	FLORENCE	Italy	
296	1013	1	NORWICH	England		272	1104	5	CATANIA	Italy	
296	1013	60	DROITWICH	England		272	1104	1.5	SALZBURG	Austria	
293	1022	10	CRACOW	Poland		272	1105	1.5	BARCELONA	Spain	
293	1022	120	MADRID	Spain		269	1113	60	PRAGUE	Czechoslovakia	
291	1031	20	WEIMAR	Germany		269	1113	10	ALGIERS	Algeria	
291	1031	50	COBLENZ	Germany		267	1122	50	CROWBOROUGH	England	
288	1040	15	LENINGRAD	USSR		267	1122	1.5	ALEXANDRIA	Egypt	
288	1040	50	RENNES	France		267	1122	1	NYIREGYHÁZA	Hungary	
288	1040	10	BUDAPEST	Hungary		265	1131	100	HÖRBY	Sweden	
286	1050	100	STAGSHAW	England		265	1132	3	BILBAO	Spain	
286	1050	5	BUCAREST	Rumania		263	1140	10	TRIESTE	Free City	
286	1050	100	LISNAGARVEY	N. Ireland		263	1140	75	LIEGE	Belgium	
286	1050	1	LONDONDERRY	N. Ireland		261	1149	2	REDRUTH	England	
283	1059	20	BARI	Italy		261	1149	2	ABERDEEN	Scotland	
282	1063	2.5	BRNO	Czechoslovakia		261	1149	20	BURGHEAD	Scotland	
281	1068	20	PAREDE	Portugal		261	1149	60	MOORSIDE EDGE	England	
281	1068	1	BOLOGNA	Italy		261	1149	60	BROOKMANS PARK	England	
281	1068	1	NAPLES	Italy		261	1149	60	WESTERGLEN	Scotland	
281	1068	1	VIENNA	Austria		261	1149	10	LISNAGARVEY	N. Ireland	
281	1068	10	MONTBELIARD	France		261	1149	10	STAGSHAW	England	
281	1068	2.5	NIMES	France		261	1149	1	LONDONDERRY	N. Ireland	
281	1068	2.5	SAN SEBASTIAN	Spain		261	1149	1	PLYMOUTH	England	
280	1070	5	ALGIERS	Algeria		259	1158	10	BORDEAUX	France	
279	1077	100	BORDEAUX	France		259	1158	12	OSTRAVA	Czechoslovakia	
278	1080	1	PRIŠTINA	Yugoslavia		259	1158	1.5	DIJON	France	
276	1086	100	FALUN	Sweden		257	1167	15	MONTE CINERI	Switzerland	

1949 MEDIUM WAVE STATIONS (continued)

Metres	Kc/s	Power KW/s	Town	Country	Log	Metres	Kc/s	Power KW/s	Town	Co
256	1172	1.5	OZJICK	Yugoslavia		233	1285	5	BRUSSELS	Belgit
256	1172	2.5	TÄTRI	Czechoslovakia		232	1294	15	LINZ	Austr
255	1176	30	COPENHAGEN	Denmark		232	1294	1	NOTTODEN	Norw
253	1185	60	NICE	France		232	1294	.5	LISTA	Norway
251	1195	60	FRANKFURT	Germany		230	1303	50	BOLOGNA	Italy
249	1204	100	KOSIC	Czechoslovakia		230	1303	10	HALLE	Germany
247	1213	50	LILLE	France		229	1312	10	VIENNA	Austria
245	1222	2.5	GRONINGEN	Holland		229	1312	.5	NORKOPING	Sweden
245	1222	1	PORSGRUNN	Norway		229	1312	.2	KARLSTAD	Sweden
245	1222	20	VENICE	Italy		229	1312	.5	TROLLHATTAN	Sweden
245	1222	1.5	MAASTRICHT	Holland		229	1312	2	MALMÖ	Sweden
245	1222	1	NARVIK	Norway		229	1312	20	NAPLES	Italy
244	1231	20	SCHWERIN	Germany		229	1312	.2	UPPSALA	Sweden
244	1231	10	GLIWICE	Poland		227	1321	2	LISBON	Portugal
242	1240	1	CORK	Eire		227	1321	10	CLERMONT-FERRAND	France
242	1240	2.5	TANGIER	N. Africa		227	1321	2	VATICAN CITY	Vatican State
242	1240	20	SCOPIE	Yugoslavia		226	1330	5	BERLIN	Germany
240	1249	.5	BONE	Algeria		226	1330	20	HANOVER	Germany
240	1249	100	STUTTGART	Germany		226	1330	2.5	FLENSBURG	Germany
240	1249	100	MUNICH	Germany		226	1330	5	OSNABRÜCK	Germany
238	1258	.5	ASTURIAS	Spain		226	1330	.5	VOLAS	Greece
238	1258	10	MADONA	USSR		224	1339	20	TOULOUSE	France
238	1258	5	ROME	Italy		224	1339	10	NANCY	France
238	1258	5	CORUNNA	Spain		224	1339	20	LIMOGES	France
238	1258	.5	UDINE	Italy		224	1339	20	MARSEILLES	France
238	1258	1.5	VALENCIA	Spain		224	1339	15	LYONS	France
237	1267	1	KASSEL	Germany		224	1339	10	LODZ	Poland
237	1267	20	SAARBRÜCKEN	Germany		223	1348	2.5	DUBLIN	Eire
237	1267	5	SALZBURG	Austria		223	1348	2	VERONA	Italy
235	1276	10	FREDRIKSTAD	Norway		223	1348	5	JIHlava	Czechoslovakia
235	1276	2	VARNA	Bulgaria		223	1348	1.5	BARI	Italy
233	1285	5	VIENNA	Austria		223	1348	1.5	PERPIGNAN	France
233	1285	15	GRAZ	Austria		223	1348	1	POITIERS	France
233	1285	10	KLAGENFURT	Austria		223	1348	5	CAIRO	Egypt

1949 MEDIUM WAVE STATIONS (continued)

Metres	Kc/s	Power KW/s	Town	Country	Log	Metres	Kc/s	Power KW/s	Town	Country	Log
223	1348	1.5	VATICAN CITY	Vatican State		214	1402	1	HELSINGBORG	Sweden	
223	1348	3	SAN REMO	Italy		213	1411	7.5	OPORTO	Portugal	
223	1348	1.5	OPORTO	Portugal		213	1411	.25	UDEVALA	Sweden	
223	1348	.5	MONTLIMAR	France		213	1411	10	BAYREUTH	Germany	
223	1348	.5	SAEFFLE	Sweden		211	1420	1.5	BERLIN	Germany	
223	1348	.5	VARBERG	Sweden		211	1420	10	HELSINKI	Finland	
223	1348	1	KIRUNA	Sweden		211	1420	1.5	DUBROVNIK	Yugoslavia	
221	1357	20	TURIN	Italy		210	1429	15	VIENNA	Austria	
221	1357	10	MILAN	Italy		210	1429	2.5	BREMEN	Germany	
221	1357	10	GENOA	Italy		210	1429	5	ANCONA	Italy	
221	1357	1	MOSJÖEN	Norway		210	1429	2.5	ORAN	Algeria	
220	1366	20	HERFORD	Germany		210	1429	1.5	CLERMONT-FERRAND	France	
220	1366	5	ČESKÝ-BUDĚJOVICE	Czechoslovakia		210	1429	1	PORI	Finland	
220	1366	10	NANTES	France		210	1429	.5	ASTURIAS	Spain	
218	1375	2.5	HILVERSUM	Holland		210	1429	.2	ST. BRIEUX	France	
218	1375	1	BASLE	Switzerland		210	1429	1.5	MONTCEAU	France	
218	1375	1	BEEK	Holland		209	1438	2.5	CONSTANTINE	Algeria	
217	1384	10	BARTLEY	England		209	1438	.5	MALLORCA	Spain	
217	1384	20	CLEVEDON	England		209	1438	1.5	MISKOLC	Hungary	
217	1384	1	SZCZECIN	Poland		209	1438	.5	SAJEKAS	Yugoslavia	
215	1393	20	DIJON	France		207	1447	.5	SYNCHRONISED CHAIN	Spain	
215	1393	15	LILLE	France		207	1447	12	BURGOS	Spain	
215	1393	25	NICE	France		207	1447	.75	KALMAR	Sweden	
215	1393	15	GRENOBLE	France		207	1447	.25	BORÅS	Sweden	
215	1393	30	BORDEAUX	France		207	1447	10	BURGOS	Spain	
215	1393	25	RENNES	France		206	1456	25	ROUEN	France	
215	1393	10	STRASBOURG	France		206	1456	2.5	DRESDEN	Germany	
214	1402	2	STARA-ZAGORA	Bulgaria		205	1465	.5	ANTWERP	Belgium	
214	1402	1.5	HUDIKSVALL	Sweden		205	1465	.5	GHENT	Belgium	
214	1402	1.5	UMEA	Sweden		205	1465	1.5	PECS	Hungary	
214	1402	1	GAVLE	Sweden		203	1474	—	SYNCHRONISED CHAIN	Gt. Britain	
214	1402	1	VISBY	Sweden		202	1483	.5	COURTRAI	Belgium	
214	1402	.5	ESKILSTUNA	Sweden		202	1483	.5	LIMBOURG	Belgium	
214	1402	.25	PORJUS	Sweden		201	1492	1	TAMPERE	Finland	

1949 MEDIUM WAVE STATIONS (continued)

Metres	Kc/s	Power KW/s	Town	Country	Log	Metres	Kc/s	Power KW/s	Town	Count
201	1492	-25	SYNCHRONISED CHAIN	Spain						
201	1492	2-5	VENICE	Sicily						
201	1492	-25	HALMSTAD	Sweden						
201	1492	-3	HAINAUT	Belgium						
201	1492	-5	NAMUR	Belgium						
201	1492	5	MESSINA	Sicily						
200	1500	-25	SYNCHRONISED CHAIN	Spain						
200	1500	-5	KRISTENHAM	Sweden						
200	1500	-5	TAMISAARI	Finland						
200	1500	-5	JACOBSTAD	Finland						
200	1500	-75	BREMERHAVEN	Germany						
200	1500	1-5	TIRANA	Albania						
199	1510	-5	JÖNKÖPING	Sweden						
198	1516	-5	GORIZIA	Italy						
197	1522	10	VAASA	Finland						
196	1530	1-5	KARLSKRONA	Sweden						

COPENHAGEN PLAN IN FORCE AFTER MARCH 1950
of
LONG & MEDIUM WAVE STATIONS IN EUROPE, NEAR EAST & NORTH AFRICA

Metres	Kc/s	Power KW/s	Town	Country	Log	Metres	Kc/s	Power KW/s	Town	Country	Log
1935	155	10	TROMSÖ	Norway		530	566	5	CATANIA	Italy	
1935	155	150	BRASOV	Rumania		530	566	10	PALERMO	Sicily	
1829	164	450	ALLOUIS	France		530	566	100	ATHLONE	Eire	
1734	173	500	MOSCOW	USSR		522	575	100	RIGA	USSR	
1648	182	100	REYKJAVIK	Iceland		514	584	120	VIENNA	Austria	
1648	182	10	LULEÅ	Sweden		506	593	150	SUNDSVALL	Sweden	
1648	182	120	ANKARA	Turkey		506	593	60	SOFIA	Bulgaria	
1571	191	200	MOTALA	Sweden		498	602	150	LYONS	France	
1500	200	400	DROITWICH	England		491	611	120	RABAT	Morocco	
1435	209	150	KIEV	USSR		491	611	60	SARAJEVO	Yugoslavia	
1376	218	200	OSLO	Norway		491	611	100	PETROZAVODSK	USSR	
1322	227	200	WARSAW	Poland		491	611	5	EIDAR	Iceland	
1271	236	100	LENINGRAD	USSR		484	620	50	MOLLATYA	Turkey	
1224	245	150	KALUNDBORG	Denmark		484	620	150	BRUSSELS	Belgium	
1181	254	200	LAHTI	Finland		477	629	120	TUNIS	Tunisia	
1141	263	150	MOSCOW	USSR		477	629	100	VIGRA	Norway	
1103	272	200		Czechoslovakia		470	638	150	PRAGUE	Czechoslovakia	
1067	281	100	MINSK	USSR		464	647	120	DROITWICH	England	
714	420	10	ÖSTERSUND	Sweden		464	647	15	WESTERGLEN	Scotland	
693	433	10	OULU	Finland		464	647	15	STAGSHAW	England	
577	520	1	HAMAR	Norway		464	647	15	BURGHEAD	Scotland	
567	529	150	BEROMÜNSTER	Switzerland		464	647	100	KHARKOV	USSR	
557	539	135	BUDAPEST I.	Hungary		457	656	80	FLORENCE	Italy	
547	548	100	SIMFEROPOL	USSR		457	656	45	TURIN	Italy	
547	548	20	OUKHTA-CARELIE	USSR		457	656	20	BOLZANO/BOZEN	Italy	
539	557	100	HELSINKI	Finland		457	656	80	NAPLES	Italy	
539	557	20	CAIRO	Egypt		457	656	150	MURMANSK	USSR	
539	557	50	MONTE CENERI	Switzerland		451	665	100	VILNA	USSR	

COPENHAGEN PLAN (continued)

Metres	Kc/s	Power KW/s	Town	Country	Log	Metres	Kc/s	Power KW/s	Town	Country	Log
445	674	10	BODÖ	Norway		371	809	20	REDMOSS	Scotland	
445	674	100	ROSTOV	USSR		371	809	135	SKOPIE	Yugoslavia	
445	674	100	MARSEILLES	France		367	818	100	POZNAN	Poland	
439	683	150	BELGRADE	Yugoslavia		363	827	100	SOFIA	Bulgaria	
433	692	150	MOORSIDE EDGE	England		359	836	20	BEIRUT	Lebanon	
433	692	10	NICOSIA	Cyprus		359	836	150	NANCY	France	
428	701	5	SYNCHRONISED CHAIN	Czechoslovakia		355	845	150	ROME	Italy	
428	701	120	RABAT	Morocco		351	854	150	BUCAREST	Rumania	
428	701	100	BANSKA-BYSTRICA	Czechoslovakia		348	863	150	PARIS	France	
428	701	20	FINNMARK	Norway		344	872	150	MOSCOW	USSR	
422	710	150	STALINO	USSR		340	881	20	PENMON	Wales	
422	710	150	LIMOGES	France		340	881	5	ABERYSTWYTH	Wales	
417	719	50	DAMASCUS	Syria		340	881	150	WASHFORD	England	
417	719	120	LISBON	Portugal		340	881	5	WREXHAM	Wales	
412	728	100	ATHENS	Greece		340	881	20	CETINJE	Yugoslavia	
407	737	20	JERUSALEM	Israël		337	890	20	TRONDHEIM	Norway	
407	737	1	AKUNEYRI	Iceland		337	890	20	BERGEN	Norway	
407	737	50	SEVILLE	Spain		337	890	20	CHRISTIANSUND	Norway	
407	737	50	GLIWICE	Poland		337	890	100	ALGIERS	Algeria	
402	746	120	HILVERSUM	Holland		337	890	20	DNIEPERPETROVSK	USSR	
397	755	50	LISBON	Portugal		334	899	150	MILAN	Italy	
397	755	50	TIMISOARA	Rumania		330	908	150	BROOKMANS PARK	England	
397	755	20	KUOPIO	Finland		327	917	135	LJUBLJANA	Yugoslavia	
393	764	150	SOTTENS	Switzerland		324	926	150	BRUSSELS	Belgium	
388	773	150	STOCKHOLM	Sweden		321	935	100	LWOW	USSR	
388	773	50	CAIRO	Egypt		318	944	20	VORONESH	USSR	
384	782	70	USSR ZONE	Germany		318	944	100	TOULOUSE	France	
384	782	100	KIEV	USSR		315	953	150	MORAVA	Czechoslovakia	
379	791	150	SALONICA	Greece		312	962	120	TUNIS	Tunisia	
379	791	50	RENNES	France		312	962	100	TURKU	Finland	
375	800	100	LENINGRAD	USSR		309	971	70	BRITISH ZONE	Germany	
371	809	100	WESTERGLEN	Scotland		309	971	20	KALININE	USSR	
371	809	5	DUNDEE	Scotland		309	971	50	IZMIR	Turkey	
371	809	100	BURGHEAD	Scotland		309	971	20	SMOLENSK	USSR	

COPENHAGEN PLAN (continued)

Metres	Kc/s	Power KW/s	Town	Country	Log	Metres	Kc/s	Power KW/s	Town	Country	Log
306	980	150	GOTHENBERG	Sweden		273	1097	5	SYNCHRONISED CHAIN	Czechoslovakia	
306	980	100	ALGIERS	Algeria		273	1097	150	BRATISLAVA	Czechoslovakia	
303	989	70	U.S. ZONE	Germany		271	1106	100	MOGHILEV	USSR	
303	989	20	BEIRUT	Lebanon		269	1115	50	BOLOGNA	Italy	
303	989	10	ROVANIEMI	Finland		269	1115	5	SAN REMO	Italy	
301	998	100	KISHINEV	USSR		269	1115	50	BARI	Italy	
298	1007	20	ALEPPO	Syria		269	1115	5	SYNCHRONISED CHAIN	Norway	
298	1007	120	HILVERSUM	Holland		267	1124	5	VARNA	Bulgaria	
295	1016	150	ISTANBUL	Turkey		267	1124	20	BRUSSELS	Belgium	
293	1025	20	JERUSALEM	Israel		267	1124	20	VIBORG	USSR	
293	1025	100	GRAZ	Austria		265	1133	135	ZAGREB	Yugoslavia	
290	1034	40	LISBON	Portugal		263	1142	20	KALININGRAD	USSR	
290	1034	100	TALLINN	USSR		263	1142	40	ORAN	Algeria	
290	1034	10	TURIN	Italy		263	1142	20	CONSTANTINE	Algeria	
288	1043	5	KALAMATA	Greece		261	1151	5	LONDONDERRY	N. Ireland	
288	1043	20	MARAKESH	Morocco		261	1151	100	LISNAGARVEY	N. Ireland	
288	1043	20	AGADIR	Morocco		261	1151	5	CARLISLE	England	
288	1043	20	OUJDA	Morocco		261	1151	100	STAGSHAW	England	
288	1043	70	USSR ZONE	Germany		261	1151	20	CLUJ	Rumania	
285	1052	50	TRIPOLI	Libya		261	1151	5	BAIA MARE	Rumania	
285	1052	10	JASSY	Rumania		261	1151	5	ORADEA	Rumania	
285	1052	150	START POINT	England		259	1160	150	STRASBOURG	France	
285	1052	5	FOSCANI	Rumania		257	1169	150	ODESSA	USSR	
285	1052	10	HARTLAND POINT	England		255	1178	100	HÖRBY	Sweden	
283	1061	10	CAGLIARI	Italy		253	1187	135	BUDAPEST	Hungary	
283	1061	15	LISBON	Portugal		251	1196	70	FRENCH ZONE	Germany	
283	1061	60	EAST DENMARK	Denmark		251	1196	20	MARAKESH	Morocco	
280	1070	20	KRASNODAR	USSR		251	1196	20	AGADIR	Morocco	
280	1070	100	PARIS	France		251	1196	20	OUJDA	Morocco	
278	1079	50	WROCLAW	Poland		251	1196	15	KERKYRA	Greece	
276	1088	10	SHKODRA	Albania		249	1205	5	HAIFA	Israel	
276	1088	10	KORCA	Albania		249	1205	10	LUBLIN	Poland	
276	1088	20	NORWICH	England		249	1205	100	BORDEAUX	France	
276	1088	150	DROITWICH	England		247	1214	5	AYR	Scotland	

COPENHAGEN PLAN (continued)

Metres	Kc/s	Power KW/s	Town	Country	Log	Metres	Kc/s	Power KW/s	Town	Country	Log
247	1214	20	BURGHAD	Scotland		240	1250	20	ZALAEGRSZEG	Hungary	
247	1214	2	PLYMOUTH	England		238	1259	100	SZCZECIN	Poland	
247	1214	2	REDRUTH	England		237	1268	135	BELGRADE	Yugoslavia	
247	1214	2	REDMOSS	Scotland		235	1277	150	LILLE	France	
247	1214	10	STAGSHAW	England		233	1286	20	—	Portugal	
247	1214	50	WESTERGLLEN	Scotland		233	1286	100	KOSICE	Czechoslovakia	
247	1214	60	BROOKMANS PARK	England		232	1295	150	OTTRINGHAM	England	
247	1214	5	DUNDEE	Scotland		230	1304	40	ORAN	Algeria	
247	1214	50	MOORSIDE EDGE	England		230	1304	20	CONSTANTINE	Algeria	
247	1214	10	LISNAGARVEY	N. Ireland		230	1304	50	DANZIG	Poland	
247	1214	70	BRITISH ZONE	Germany		228	1313	100	STAVANGER	Norway	
247	1214	20	KURSK	USSR		227	1322	100	OUCHGOROD	USSR	
247	1214	2	AZORES	Azores		225	1331	25	PESCARA	Italy	
247	1214	1	LONDONDERRY	N. Ireland		225	1331	50	GENOA	Italy	
245	1223	100	FALUN	Sweden		225	1331	25	MESSINA	Sicily	
245	1223	20	STARAZAGORA	Bulgaria		225	1331	50	ROME	Italy	
245	1223	20	BARCELONA	Spain		225	1331	25	VENICE	Italy	
243	1232	25	MORAVA-VYCHOD	Czechoslovakia		224	1340	5	BUDAPEST	Hungary	
243	1232	100	PRAGUE	Czechoslovakia		224	1340	5	MISKOLC	Hungary	
243	1232	25	CECHY-ZAPAD	Czechoslovakia		224	1340	5	PECS	Hungary	
243	1232	5	BUDĚJOVICE	Czechoslovakia		224	1340	5	MAGYAROVAR	Hungary	
242	1241	20	HAVRE	France		224	1340	150	CROWBOROUGH	England	
242	1241	10	—	Corsica		224	1340	5	ALEXANDRIA	Egypt	
242	1241	20	GRENOBLE	France		222	1349	10	—	Corsica	
242	1241	50	VAASA	Finland		222	1349	10	NANTES	France	
242	1241	20	CLERMONT-FERRAND	France		222	1349	50	TOULOUSE	France	
242	1241	20	NICE	France		222	1349	50	MARSEILLES	France	
242	1241	20	QUIMPER	France		222	1349	20	KULDIGA	USSR	
242	1241	20	MONTBÉLIARD	France		222	1349	20	MODONA	USSR	
242	1241	20	BAYONNE	France		221	1358	100	TIRANA	Albania	
242	1241	20	TIRASPOL	USSR		219	1367	25	TORUN	Poland	
240	1250	50	ATHLONE	Ire		219	1367	5	THORSHAVEN	Faroe Isles	
240	1250	10	NYIREGYHÁZA	Hungary		219	1367	5	OPORTO	Portugal	
240	1250	5	—	Lower Egypt		219	1367	25	CALTANISSETTA	Italy	

COPENHAGEN PLAN (continued)

Metres	Kc/s	Power KW/s	Town	Country	Log	Metres	Kc/s	Power KW/s	Town	Country	Log
218	1376	150	STRASBOURG	France		207	1448	5	GENOA	Italy	
217	1385	150	KAUNAS	USSR		207	1448	3	FLORENCE	Italy	
217	1385	100	MADRID	Spain		207	1448	25	ANCONA	Italy	
215	1394	5	INNSBRÜCK	Austria		207	1448	50	MILAN	Italy	
215	1394	5	LINZ	Austria		207	1448	5	SYNCHRONISED CHAIN	Portugal	
215	1394	5	DORNBIRN	Austria		207	1448	20	SYNCHRONISED CHAIN	Sweden	
215	1394	15	GRAZ	Austria		206	1457	60	CLEVEDON	England	
215	1394	5	RHODES	Greece		206	1457	60	BARTLEY	England	
215	1394	20	SYNCHRONISED CHAIN	Sweden		206	1457	20	CRAIOVA	Rumania	
214	1403	20	LILLE	France		205	1466	120	MONTE CARLO	Monaco	
214	1403	20	BAYONNE	France		205	1466	2	SYNCHRONISED CHAIN	Norway	
214	1403	20	NICE	France		203	1475	20	KLAGENFURT	Austria	
214	1403	20	QUIMPER	France		203	1475	30	VIENNA	Austria	
214	1403	10	PARIS	France		203	1475	20	SALZBURG	Austria	
214	1403	10	MONTPELLIER	France		202	1484	—	LOW POWER STATIONS	International	
214	1403	25	FRENCH ZONE	Germany		201	1493	20	GOMEL	USSR	
214	1403	20	BARANOVICHI	USSR		201	1493	60	SYNCHRONISED CHAIN	France	
214	1403	5	KOMOTINI	Greece		200	1502	50	SARAGOSSA	Spain	
212	1412	20	BITOLJA	Yugoslavia		200	1502	50	CRACOW	Poland	
212	1412	20	PRISTINA	Yugoslavia		200	1502	10	WARSAW	Poland	
212	1412	20	RIJEKA	Yugoslavia		199	1511	5	CHANIA	Greece	
212	1412	20	BANJA-LUKA	Yugoslavia		199	1511	20	BRUSSELS	Belgium	
212	1412	20	MARIBOR	Yugoslavia		197	1520	20	CORUNNA	Spain	
212	1412	60	SPLIT	Yugoslavia		197	1520	30	OSTRAVA	Czechoslovakia	
211	1421	5	SFAX	Tunisia		197	1520	30	PLZEN	Czechoslovakia	
211	1421	20	SARREBRÜCK	Germany		197	1520	5	JIHLAVA	Czechoslovakia	
211	1421	5	CHERNIGOV	USSR		196	1529	100	VATICAN CITY	Vatican State	
210	1430	10	COPENHAGEN	Denmark		196	1529	1	FUNCHAL	Madeira	
210	1430	70	—	Denmark		196	1529	20	SYNCHRONISED CHAIN	Sweden	
210	1430	5	ARGYROKASTRO	Albania		195	1538	5	SYNCHRONISED CHAIN	Spain	
210	1430	50	MADRID	Spain		195	1538	70	FRENCH ZONE	Germany	
208	1439	150	LUXEMBOURG	Luxembourg		194	1546	5	VINNITZA	USSR	
207	1448	5	VENICE	Italy		194	1546	2	REDMOSS	Scotland	
207	1448	5	NAPLES	Italy		194	1546	2	REDRUTH	England	

COPENHAGEN PLAN (continued)

Metres	Kc/s	Power KW/s	Town	Country	Log	Metres	Kc/s	Power KW/s	Town	Country	Log
194	1546	2	SHEFFIELD	England		187	1602	2	SYNCHRONISED CHAIN	Portugal	
194	1546	5	PLYMOUTH	England		187	1602	2	SYNCHRONISED CHAIN	Norway	
194	1546	2	MANCHESTER	England							
194	1546	20	LONDON	England							
194	1546	2	PRESTON	England							
194	1546	5	NEWCASTLE-ON-TYNE	England							
194	1546	2	MIDDLESBROUGH	England							
194	1546	5	GLASGOW	Scotland							
194	1546	5	HULL	England							
194	1546	5	LEEDS	England							
194	1546	5	EXETER	England							
194	1546	5	EDINBURGH	Scotland							
194	1546	2	BRISTOL	England							
194	1546	2	CARDIFF	Wales							
194	1546	5	BELFAST	N. Ireland							
194	1546	2	DUNDEE	Scotland							
194	1546	2	FAREHAM	England							
194	1546	5	LIVERPOOL	England							
194	1546	2	BOURNEMOUTH	England							
193	1554	75	NICE	France							
193	1554	20	TURI	USSR							
193	1554	70	U.S. ZONE	Germany							
192	1562	5	SYNCHRONISED CHAIN	Switzerland							
192	1562	5	SYNCHRONISED CHAIN	Portugal							
192	1562	20	SYNCHRONISED CHAIN	Sweden							
191	1570	70	USSR ZONE	Germany							
191	1570	5	SYNCHRONISED CHAIN	Spain							
191	1570	5	SFAX	Tunisia							
190	1578	10	SYNCHRONISED CHAIN	Italy							
190	1578	10	FREDRIKSTAD	Norway							
189	1586	5	SYNCHRONISED CHAIN	Spain							
189	1586	70	BRITISH ZONE	Germany							
188	1594	—	LOW POWER STATIONS	International							
187	1602	70	U.S. ZONE	Germany							

SHORT WAVE STATIONS OF THE WORLD

Wave Length	Frequency in Kc/s	Call Sign	Power KW/s	Station Name	Country	Log	Wave Length	Frequency in Kc/s	Call Sign	Power KW/s	Station Name	Country	Log
150	2000	GMT	-5	GREENWICH	England		99.5	3015	YDA	5	BANDOENG	Java	
144.8	2072	—	—	TOKIO	Japan		97.6	3075	JZC	10	TOKIO	Japan	
144.1	2082	YBJ2	—	JOKJAKARTA	Java		94.3	3180	—	—	JOKJAKARTA	Java	
134.5	2230	CZ5B	—	QUEBEC	Canada		92.9	3230	HDZ	-25	RIOCAMBA	Ecuador	
129.9	2310	HNB	5	BAGHDAD	Iraq		92.6	3240	YDI	-25	SOERABAIA	Java	
134.2	2235	YDA3	-25	BATAVIA	Java		92.3	3250	JO9G	-4	NIGATA	Japan	
134.2	2235	—	—	JOKJAKARTA	Java		92.3	3250	JO8F	-4	SAPORA	Japan	
129.3	2320	TGWC	1	GUATEMALA CITY	Guatemala		92.3	3250	JO5A	-4	MATSUYAMA	Japan	
128.7	2330	ZQI	-25	KINGSTON	Jamaica		92.3	3250	JO6D	-4	FUKUOKA	Japan	
128.5	2335	—	—	KEBUMEN	Java		91.7	3270	YDL	-3	PADANG	Sumatra	
128.2	2340	HOA	1	PANAMA CITY	Panama		90.8	3305	VUC2	10	CALCUTTA	India	
126.5	2372	XEIW	-25	CHIHUAHUA	Mexico		90.6	3310	YVIRO	-7	TRUJILLO	Venezuela	
126.0	2380	—	—	BANDOENG	Java		90.4	3320	ZJM3	7	LIMASOL	Cyprus	
125.8	2385	—	-25	FORT DE FRANCE	Martinique		90.2	3325	—	2	JAFFA	Israel	
125.5	2391	WVL	-4	QUARRY HEIGHTS	Panama		89.8	3340	VUD3	5	DELHI	India	
125.2	2395	—	-35	VIENNA	Austria		89.8	3340	—	2	TEHERAN	Iran	
124.5	2410	AEXE	-1	TLAXCALA	Mexico		89.7	3345	JO7E	-4	SENDAI	Japan	
123	2440	HRN	-25	TEGUCIGALPA	Honduras		89.7	3345	JO3E	-4	OSAKA	Japan	
121.7	2465	WLK5	—	KURE	Japan		89.5	3350	YBK3	—	SOERAKARTA	Java	
120	2500	WWV	-7	WASHINGTON, D.C.	USA		89.3	3360	ZOH	7-75	COLOMBO	Ceylon	
119.5	2510	RW51	-075	SEMARANG	Java		89.1	3365	VUB2	10	BOMBAY	India	
119.2	2515	JODK	5	SEOUL	Korea		89.1	3365	ZEZ	—	SALISBURY	S. Rhodesia	
115.4	2600	YDD	-2	BATAVIA	Java		89	3370	YVIRT	-5	MARACAIBO	Venezuela	
113.2	2650	—	—	MALANG	Java		89	3370	—	—	SOERAKARTA	Java	
106	2830	HC5FK	-2	QUITO	Ecuador		88.8	3380	YV5RY	1	CARACAS	Venezuela	
104.2	2880	GRC	50	LONDON	England		88.5	3390	YV4RK	-3	MARACAI	Venezuela	
103.8	2890	—	—	PURWAKARTA	Java		88.3	3395	—	1	COLOMBO	Ceylon	
101.5	2955	SUU2	12	CAIRO	Egypt		88.2	3400	—	-8	UMTALI	S. Rhodesia	

SHORT WAVE STATIONS OF THE WORLD (continued)

Wave Length	Frequency in Kc/s	Call Sign	Power KW/s	Station Name	Country	Log	Wave Length	Frequency in Kc/s	Call Sign	Power KW/s	Station Name	Country	Log
88-2	3400	YV5RW	.8	CARACAS	Venezuela		84-7	3540	YV4RM	—	MARACAI	Venezuela	
88	3410	—	—	BUDAPEST	Hungary		84-3	3560	YV2RM	—	SAN CRISTOBAL	Venezuela	
87-9	3412	—	—	MADIOEN	Java		84	3570	HCT	2	GUAYAQUIL	Ecuador	
87-7	3420	YV2RC	.4	MERIDA	Venezuela		84	3570	YV5RD	2.5	CARACAS	Venezuela	
87-7	3420	VONI	.3	ST. JOHNS	Newfoundland		83-8	3580	YV3RS	—	BARQUISIMETO	Venezuela	
87-5	3430	YV4RK	.3	MARACAI	Venezuela		83-6	3590	—	.5	OSAKA	Japan	
87-5	3430	LRS	—	BUENOS AIRES	Argentina		83-6	3590	YV7RB	.5	CUMANA	Venezuela	
87-3	3435	VUM2	.5	MADRAS	India		83-3	3600	VPC	—	PORT STANLEY	Falkland Isles	
87-2	3440	—	—	PORT STANLEY	Falkland Isles		83	3615	HBQ3	40	GENEVA	Switzerland	
87-2	3440	YVIRU	.7	MARACAIBA	Venezuela		82-6	3630	—	—	MAGELANG	Java	
86-9	3450	YV3RS	4	BARQUISIMETO	Venezuela		82	3660	—	—	VALLADOLID	Spain	
86-9	3450	—	5	JOHANNESBURG	S. Africa		81-8	3665	ZEA	—	SALISBURY	S. Rhodesia	
86-9	3450	YV6RH	—	BARCELONA	Venezuela		81	3705	HCIVT	.25	AMBITO	Ecuador	
86-9	3450	—	—	DAMASCUS	Syria		80-9	3710	HCQRX	.25	QUITO	Ecuador	
86-7	3460	YV4RP	.7	VALENCIA	Venezuela		80	3750	—	—	MOSCOW	USSR	
86-5	3470	YV7RB	1	CUMANA	Venezuela		80	3750	—	—	KEDIRI	Java	
86-4	3472	JO9H	.3	TOKIO	Japan		79-4	3780	—	—	SOERAKARTA	Java	
86-3	3476	JO4D	.4	HIROSHIMA	Japan		79-2	3790	JOAK	.3	TOKIO	Japan	
86-2	3478	HNC	5	BAGHDAD	Iraq		79	3795	—	—	TJILATJAP	Java	
86-2	3480	ZQI	.25	KINGSTON	Jamaica		78-9	3800	—	—	OSAKA	Japan	
86-2	3480	YV4RQ	.6	PUERTO CABELLO	Venezuela		78-9	3800	—	—	NEGEV	Israel	
86	3490	YV3RS	.7	BARQUISIMETO	Venezuela		78-9	3800	ZEB	.1	BULAWAYO	S. Rhodesia	
86	3490	XZZ	—	RANGOON	Burma		78-3	3830	—	—	MAGADAN	USSR	
85-8	3495	CR7AB	.7	LOURENÇO	Burma		76-6	3915	ZQP	.4	LUSAKA	N. Rhodesia	
				MARQUES	Mozambique		76-4	3925	—	.3	FUKUOKA	Japan	
85-8	3495	—	.3	NAGOYA	Japan		76-3	3930	—	—	PATI	Java	
85-8	3495	VUD2	10	DELHI	India		76-2	3935	HC5EH	.5	CUENCA	Ecuador	
85-7	3500	CR7IC	.1	BEIRA	Mozambique		75-7	3965	JO6E	.4	KUMAMOTO	Japan	
85-6	3505	YV5RX	2	CARACAS	Venezuela		75-7	3965	JO2J	.4	NAGOYA	Japan	
85-4	3515	YV6RC	6	BARCELONA	Venezuela		75-7	3965	—	.3	HIROSHIMA	Japan	
85	3530	YV5RS	1	CARACAS	Venezuela		75-5	3975	—	—	PRISTINA	Yugoslavia	
85	3530	HCK	—	QUITO	Ecuador		75-3	3985	—	—	PATI	Java	
84-9	3533	—	—	PEKALONGAN	Java		75-2	3990	—	.3	NIGATA	Japan	

SHORT WAVE STATIONS OF THE WORLD (continued)

Wave Length	Frequency in Kc/s	Call Sign	Power KW/s	Station Name	Country	Log	Wave Length	Frequency in Kc/s	Call Sign	Power KW/s	Station Name	Country	Log
75	4000	—	—	GARCET	Java		64.4	4655	—	—	LENINGRAD	USSR	
74.6	4020	HC11M	25	IBARRA	Ecuador		64.3	4660	SUC2	10	CAIRO	Egypt	
74.5	4025	GKU4	—	GREENWICH	England		64.2	4665	HHCA	08	PORT-AU-PRINCE	Haiti	
74.2	4045	CSX2	1	PONTA DELGADA	Azores		64.1	4675	—	—	SALATIGA	Java	
74.1	4050	JOAK	3	TOKIO	Japan		64	4680	—	—	BATAVIA	Java	
73.9	4060	—	8	JAFFA	Israel		63.9	4695	—	—	BATUM	USSR	
73.1	4105	HCJB	1	QUITO	Ecuador		63.8	4705	ZQ1	—	KINGSTON	Jamaica	
72.8	4120	—	—	TEGAL	Java		63.6	4715	HC2ET	3	GUAYAQUIL	Ecuador	
72.5	4135	—	—	ULAN-UDI	USSR		63.5	4720	—	—	SOERBAIA	Java	
72.5	4135	—	—	SALATIGA	Java		63.4	4725	—	—	MODJOKERTO	Java	
71.9	4170	TGOA	—	GUATEMALA CITY	Guatemala		63.4	4725	HCSB	—	PUNTA	Ecuador	
71.4	4200	HC5AO	5	CUENCA	Ecuador		63.4	4725	YV5RY	1	CARACAS	Venezuela	
71.2	4215	—	—	PURWAKARTA	Java		63.3	4730	—	—	TONKIN	F. Indo-China	
70.1	4275	XMAG	1	NANKING	China		63.1	4750	YV1RV	2	MARACAIBO	Venezuela	
69.9	4290	COX7	5	HAVANA	Cuba		63	4760	YV5RV	4	LA GUAIRA	Venezuela	
69.8	4300	FIQA	5	TANANARIVE	Madagascar		63	4760	XUSA	—	CHUNGKING	China	
68.8	4360	—	2	JOKJAKARTA	Java		62.9	4765	HC4FA	1	PORTO VIEJO	Ecuador	
68.7	4365	YD12	3	SOERABAIA	Java		62.9	4770	YV1RY	2	CORO	Venezuela	
68.6	4370	—	3	TANANARIVE	Madagascar		62.8	4775	HND	5	BAGHDAD	Iraq	
68.5	4375	—	2	JOHANNESBURG	S. Africa		62.8	4775	HJGB	2	BUCARAMANGA	Colombia	
68.5	4380	—	—	PETROPVLOVSK	USSR		62.7	4780	YV4RO	2	VALENCIA	Venezuela	
68.4	4385	—	3	MATSUYAMA	Japan		62.7	4780	—	—	SINGAPORE	Malaya	
68.2	4400	JBBK	12	PYONG-YANG	Korea		62.6	4785	—	—	SAO LUIZ	Brazil	
68	4410	—	—	DAMASCUS	Syria		62.6	4785	HJAB	2.5	BARRANQUILLA	Colombia	
66.5	4510	—	—	MANAMEH	Bahrein Isle		62.6	4790	—	—	BANDOENG	Java	
66.4	4515	—	—	KHABAROVSK	USSR		62.6	4790	YV6RU	6	BOLIVAR	Venezuela	
65.9	4550	—	—	MOSCOW	USSR		62.6	4790	EQD	2	TEHERAN	Iran	
65.8	4560	HC4FS	—	ESMERALDA	Ecuador		62.5	4795	HJDX	1	MEDELLIN	Colombia	
65.2	4600	—	—	SALATIGA	Java		62.5	4795	HUB	3	SAN SALVADOR	El Salvador	
65	4615	—	—	BUKIT TINGGI	Sumatra		62.5	4800	—	—	LOURENÇO		
64.8	4630	—	—	JEMBER	Java						MARQUES	Mozambique	
64.6	4645	—	—	BATAVIA	Java		62.5	4800	YV1RX	—	MARACAIBO	Venezuela	
64.5	4650	HC2AK	1	GUAYAQUIL	Ecuador		62.4	4805	HJDG	6	QUIBDO	Colombia	

SHORT WAVE STATIONS OF THE WORLD (continued)

Wave Length	Frequency in Kc/s	Call Sign	Power KW/s	Station Name	Country	Log	Wave Length	Frequency in Kc/s	Call Sign	Power KW/s	Station Name	Country	Log
62-4	4805	HJDU	.75	MEDELLIN	Colombia		61-8	4855	—	—	BANDOENG	Java	
62-4	4805	—	.1	ST. DENIS	Reunion Isle		61-8	4855	HJCA	1	BOGOTA	Colombia	
62-4	4810	YVIRL	.5	MARACAIBO	Venezuela		61-7	4860	HCSHC	—	RIOBAMBA	Ecuador	
62-3	4815	HJBB	1	CUCUTA	Colombia		61-7	4860	YV3RM	—	BARQUISIMETO	Venezuela	
62-3	4815	—	10	SAIGON	F. Indo-China		61-7	4860	VUDI1	20	DELHI	India	
62-2	4820	YV9RA	—	SAN FERNANDO DE APURÉ	Venezuela		61-7	4860	JKE2	1	YAMATO	Japan	
62-2	4820	HCK	—	QUITO	Ecuador		61-7	4860	VUDI0	20	DELHI	India	
62-2	4820	XEJG	.25	GUADALAJARA	Mexico		61-7	4860	VUD3	5	DELHI	India	
62-2	4820	—	25	SINGAPORE	Malaya		61-7	4865	YDD2	.3	BATAVIA	Java	
62-2	4820	CE482	5	ANTOFAGASTA	Chile		61-7	4865	HJEX	2.5	CALI	Colombia	
62-1	4825	—	—	BATHURST	Gambia		61-7	4865	PRC5	2	BELEM	Brazil	
62-1	4825	—	—	STALINGRAD	USSR		61-6	4870	—	—	TIFLIS	USSR	
62-1	4825	PRJ4	.5	PARNAHYBA	Brazil		61-6	4870	—	—	LOURENÇO		
62-1	4825	HJED	1	CALI	Colombia		61-5	4875	HJFH	1	ARMENIA	Mozambique	
62-1	4825	—	—	ALMA ATA	USSR		61-4	4880	ZAA	3	TIRANA	Colombia	
62-1	4825	—	—	SINGAPORE	Malaya		61-4	4880	YV5RU	1-5	CARACAS	Albania	
62-1	4830	YV2RN	1-5	SAN CRISTOB	Venezuela		61-4	4880	YUB2	10	CARACAS	Venezuela	
62	4835	HJKE	2-5	BOGOTA	Colombia		61-4	4880	ZID	.5	BOMBAY	India	
62	4835	VL6KG	—	KALGOORIE	W. Australia		61-4	4885	VQ7LO	1-5	PIETERMARITZBURG	S. Africa	
62	4835	YD14	—	SOERABAIA	Java		61-4	4885	HJDP	1	NAIROBI	Kenya	
62	4835	CR7BV	—	LOURENÇO			61-3	4890	YDZ	.05	MEDELLIN	Colombia	
				MARQUES	Mozambique		61-3	4890	YV5RM	—	BIAK	Borneo	
61-9	4840	—	—	FRUNZE	USSR		61-2	4895	PRF6	.25	CARACAS	Venezuela	
61-9	4840	VUC2	10	CALCUTTA	India		61-2	4895	FHE9	—	MANAOS	Brazil	
61-9	4840	YVIRZ	.3	VALERA	Venezuela		61-2	4895	HJCH	2	DAKAR	F. West Africa	
61-9	4840	—	—	QUITO	Ecuador		61-2	4895	ZRI	5	BOGOTA	Colombia	
61-9	4845	HJGF	2-5	BUCARAMANGA	Colombia		61-2	4895	ZOH	7-5	JOHANNESBURG	S. Africa	
61-9	4845	CSX2	1	PONTA DELGADA	Azores		61-2	4900	—	—	COLOMBO	Ceylon	
61-8	4855	YDX	—	MEDAN	Sumatra		61-2	4900	CR7BV	—	LUSAKA	N. Rhodesia	
61-8	4855	VQ7LO	1-5	NAIROBI	Kenya						LOURENÇO		
61-8	4855	—	.5	PIETERMARITZBURG	S. Africa						MARQUES	Mozambique	
							61-1	4905	YVIRY	—	CORO	Venezuela	
							61-1	4905	—	—	BOGOTA	Colombia	

SHORT WAVE STATIONS OF THE WORLD (continued)

Wave Length	Fre- quency in Kc/s	Call Sign	Power KW/s	Station Name	Country	Log	Wave Length	Fre- quency in Kc/s	Call Sign	Power KW/s	Station Name	Country	Log
61-1	4905	HJAG	—	BARRANQUILLA	Colombia		60-1	4990	YV3RS	4	BARQUISIMETO	Venezuela	
61-1	4910	YDB2	.3	BATAVIA	Java		60-1	4990	YV3RN	—	BARQUISIMETO	Venezuela	
61-1	4910	JKF2	5	NAZAKI	Japan		60	5000	WWV	8	WASHINGTON, D.C.	USA	
61-1	4915	CR7BV	—	LOURENÇO			59-8	5020	YVKO	10	CARACAS	Venezuela	
				MARQUES	Mozambique		59-7	5030	—	—	LENINGRAD	USSR	
61-1	4915	ZOY	5	ACCRA	Gold Coast		59-7	5030	YFA10	.5	MACASSAR	Celebes	
61-1	4915	YV5RN	5	CARACAS	Venezuela		59-5	5040	—	—	ST. LUCIA	B. W. Indies	
61	4920	VUM2	10	MADRAS	India		59-5	5040	—	—	TIFLIS	USSR	
61	4920	HJAP	1	CARTAGENA	Colombia		59-3	5060	—	—	FRUNZE	USSR	
60-9	4925	YBK	—	SOERAKARTA	Java		59-3	5060	TFI	7	REYKJAVIK	Iceland	
60-9	4925	CR7BF	7.5	LOURENÇO			59-1	5080	—	—	GROZNY	USSR	
				MARQUES	Mozambique		59	5085	—	—	BANDOENG	Java	
60-8	4930	—	—	SOLO	Java		58-9	5090	YFA10	—	MACASSAR	Celebes	
60-8	4930	JKG2	5	KAWACHI	Japan		58-9	5090	—	—	MOSCOW	USSR	
60-8	4935	CR7BU	—	LOURENÇO			58-3	5145	PMY	—	BANDOENG	Java	
				MARQUES	Mozambique		57-1	5250	LPC	—	USHUAIA	Argentina	
60-8	4935	HJAR	—	MANIZALES	Colombia		57	5260	—	—	LUSAKA	N. Rhodesia	
60-7	4940	YV3RN	—	BARQUISIMETO	Venezuela		57	5260	—	—	SALISBURY	S. Rhodesia	
60-7	4945	SDV2	—	ATHENS	Greece		56-9	5275	—	—	PAMEKASAN	Java	
60-7	4945	HJCW	—	BOGOTA	Colombia		56-6	5302	DTYC	100	MUNICH	Germany	
60-6	4950	ZQI	.25	KINGSTON	Jamaica		56-4	5320	RAH	—	YAKUTSK	USSR	
60-6	4950	VQ7LO	1.5	NAIROBI	Kenya		56	5360	—	—	MOSCOW	USSR	
60-6	4950	—	—	SOERABAIA	Java		55-7	5390	—	—	MOSCOW	USSR	
60-6	4950	H11L	—	TRUJILLO	Dominican R.		55-1	5440	—	—	MOSCOW	USSR	
60-5	4955	HJCQ	1	BOGOTA	Colombia		55	5450	—	—	SAMARKAND	USSR	
60-5	4960	—	—	BATAVIA	Java		55	5455	—	—	BATAVIA	Java	
60-5	4960	HC5HC	—	RIOBAMBA	Ecuador		54-7	5480	YCN	.05	PONTIANAK	Borneo	
60-5	4960	VUD2	10	DELHI	India		54-5	5510	WLXJ	—	SHANGHAI	China	
60-4	4965	HJAE	1	CARTAGENA	Colombia		54-2	5530	OAXIB	—	PIURA	Peru	
60-4	4970	YV5RM	5	CARACAS	Venezuela		53-8	5580	HCJ	.25	TULCAN	Ecuador	
60-3	4975	HJAG	—	BARRANQUILLA	Colombia		53-7	5590	OAXIC	.35	PIURA	Peru	
60-2	4980	H11A	—	SANTIAGO	Dominican R.		53-4	5620	—	—	ROME	Italy	
60-2	4985	—	—	SINGAPORE	Malaya		53-4	5620	YBJ	—	JOKJAKARTA	Java	

SHORT WAVE STATIONS OF THE WORLD (continued)

Wave Length	Frequency in Kc/s	Call Sign	Power KW/s	Station Name	Country	Log	Wave Length	Frequency in Kc/s	Call Sign	Power KW/s	Station Name	Country	Log
53-3	5630	OAX2A	.25	TRUJILLO	Peru		51	5880	YNCS	—	MANAGUA	Nicaragua	
53-2	5640	BFN	—	HAMBURG	Germany		51	5880	CP15	.4	LA PAZ	Bolivia	
53-1	5650	RV19	—	ASHKABAD	USSR		50-9	5885	HCK	.3	QUITO	Ecuador	
53	5660	HHCN	.1	PORT-AU-PRINCE	Haiti		50-9	5885	CEBAA	—	SANTIAGO	Chile	
52-6	5705	OAX1B	.3	PIURA	Peru		50-9	5885	XHSR	—	HONAN	China	
52-5	5720	—	—	MAGADAN	USSR		50-9	5890	—	—	MOSCOW	USSR	
52-4	5725	HCIPM	.15	QUITO	Ecuador		50-8	5895	OAX4Z	14	LIMA	Peru	
52-3	5730	—	—	DAMASCUS	Syria		50-8	5900	ZNB	.2	MAFEKING	Bechuanaland	
52-3	5730	—	—	LENINGRAD	USSR		50-8	5900	LRM	10	MENDOZA	Argentina	
52-3	5730	SDB	12	MOTALA	Sweden		50-8	5900	CRY3	—	MACAO	China	
52-3	5730	SBU	12	MOTALA	Sweden		50-8	5900	—	—	MOSCOW	USSR	
52-2	5750	ZMB2	—	APIA	Samoa		50-7	5905	OAX4V	.5	LIMA	Peru	
52-1	5755	PZH5	.35	PARAMARIBO	Surinam		50-6	5920	—	—	BERLIN	Germany	
52-1	5760	YNJAT	.5	LEON	Nicaragua		50-6	5920	—	—	MOSCOW	USSR	
52	5765	JZN	10	TOKIO	Japan		50-6	5920	XGOA	7.5	CHUNGKING	China	
51-9	5775	—	—	SANTIAGO	Chile		50-5	5935	PJCI	3	WILLEMSTAD	Curaçao	
51-9	5780	—	—	BATAVIA	Java		50-5	5940	RV15	25	KHABAROVSK	USSR	
51-8	5785	—	—	CAIRO	Egypt		50-5	5940	OX1	1	GODTHAAB	Greenland	
51-7	5800	CEBAA	—	SANTIAGO	Chile		50-5	5945	—	—	MANAMA	Bahrain Isle	
51-7	5800	—	—	MUSANTARA	Java		50-4	5950	HH25	.3	PORT-AU-PRINCE	Haiti	
51-6	5810	—	—	MOSCOW	USSR		50-4	5950	—	—	MOSCOW	USSR	
51-5	5820	WXFG	—	ADAK	Aleutians		50-4	5955	OAX4V	.5	LIMA	Peru	
51-3	5845	PZH5	.35	PARAMARIBO	Surinam		50-3	5960	—	—	MOSCOW	USSR	
51-2	5855	CP15	.35	LA PAZ	Bolivia		50-3	5960	RV19	—	ASHKABAD	USSR	
51-2	5860	—	—	BRAZZAVILLE	F. E. Africa		50-25	5970	VONF	.3	ST. JOHNS	Newfoundland	
51-2	5860	CR7AA	.3	LOURENÇO			50-25	5970	HC1QRX	.25	QUITO	Ecuador	
				MARQUES	Mozambique		50-25	5970	—	20	ANDORRA	Andorra	
51-1	5865	ZOY	—	ACCRA	Gold Coast		50-25	5970	HVJ	25	VATICAN STATE	Vatican State	
51-1	5865	CR4AA	.04	PRAIA	Cape Verde Is.		50-2	5975	CP5	.25	LA PAZ	Bolivia	
51-1	5870	TIGPH	1	SAN JOSE	Costa Rica		50-17	5980	—	—	YAKUTSK	USSR	
51-1	5870	OAX4P	.25	HUANCAYO	Peru		50-17	5980	YSWW	—	SANTA ANA	El Salvador	
51	5875	HRN	.75	TEGUCIGALPA	Honduras		50-1	5985	VONH	—	ST. JOHNS	Newfoundland	
51	5880	ZRK	5	CAPE TOWN	S. Africa		50-1	5985	LRS1	5	BUENOS AIRES	Argentina	

SHORT WAVE STATIONS OF THE WORLD (continued)

Wave Length	Fre- quency in Kc/s	Call Sign	Power KW/s	Station Name	Country	Log	Wave Length	Fre- quency in Kc/s	Call Sign	Power KW/s	Station Name	Country	Log
50-1	5985	WNRX	—	NEW YORK, N.Y.	USA		49-92	6010	VUC2	10	CALCUTTA	India	
50-1	5985	OAX4P	-25	HUANCAYO	Peru		49-92	6010	CE60I	-25	ANTOFAGASTA	Chile	
50-1	5985	—	-25	POINTE-À-PITRE	Guadeloupe		49-92	6010	RW96	—	MOSCOW	USSR	
50-08	5990	YSWW	-2	SANTA ANA	El Salvador		49-92	6010	CJXC	1	SYDNEY	Nova Scotia	
50-08	5990	H13U	-2	SANTIAGO	Dominican R.		49-92	6010	OQ2RC	-5	LEOPOLDVILLE	Belgian Congo	
50-08	5990	HCJB	—	QUITO	Ecuador		49-92	6010	OAX4Q	1	LIMA	Peru	
50-04	5995	PR13	1	BELLO HORIZONTE	Brazil		49-92	6010	OLR2A	30	PRAGUE	Czechoslovakia	
50-04	5995	H58PD	-75	BANGKOK	Siam		49-92	6010	—	—	SINGAPORE	Malaya	
50	6000	ZFY	-5	GEORGETOWN	B. Guiana		49-92	6010	VUD11	20	DELHI	India	
50	6000	HJKB	—	BOGOTA	Colombia		49-92	6010	GRB	75	LONDON	England	
50	6000	HHYM	-2	PORT-AU-PRINCE	Haiti		49-92	6010	—	—	DAMASCUS	Syria	
50	6000	—	-5	DAMASCUS	Syria		49-92	6010	XEOI	2-5	MEXICO CITY	Mexico	
50	6000	XEBT	-5	MEXICO CITY	Mexico		49-87	6015	JLR	20	TOKIO	Japan	
50	6000	—	—	SALISBURY	S. Rhodesia		49-87	6015	JDK	5	NAZAKI	Japan	
50	6000	XGOH	—	LAIYANG	China		49-87	6015	PRA8	5	RECIFE	Brazil	
50	6000	OAX4C	-25	LIMA	Peru		49-87	6015	XURA	1	TAI-PE	Formosa	
50	6000	HCQRX	-25	QUITO	Ecuador		49-87	6015	XNMM	-3	NICARAGUA	Nicaragua	
50	6000	—	-25	INNSBRÜCK	Austria		49-84	6018	HJXC	1	BOGOTA	Colombia	
49-95	6005	JO8C	—	SAPPORO	Japan		49-83	6020	XEUW	-25	VERA CRUZ	Mexico	
49-95	6005	HP5K	-75	COLON	Panama		49-83	6020	CP4I	-05	SUCRE	Bolivia	
49-95	6005	VE9AI	-25	EDMONTON	Canada		49-83	6020	MCH	—	LUXEMBOURG	Luxembourg	
49-95	6005	CFCX	-1	MONTREAL	Canada		49-83	6020	XNCR	—	YENAN	China	
49-95	6005	—	—	MOSCOW	USSR		49-83	6020	—	40	KIEV	USSR	
49-95	6005	JO9I	-3	NIGATA	Japan		49-79	6025	HC1TR	—	IBARRA	Ecuador	
49-95	6005	JO6F	-3	FUKUOKA	Japan		49-79	6025	CR4AA	—	PRAIA	Cape Verde Is.	
49-95	6005	JO8G	-3	SAPPORO	Japan		49-79	6025	—	—	ALGIERS	Algeria	
49-97	6005	JO5B	-3	MATSUYAMA	Japan		49-79	6025	FZI	1-5	BRAZZAVILLE	F. E. Africa	
49-97	6005	—	2-5	RABAT	F. Morocco		49-79	6025	PGD	5	HILVERSUM	Holland	
49-97	6005	ZRH	5	JOHANNESBURG	S. Africa		49-79	6025	H11J	-15	S. PED. DE MACORIS	Dominican R.	
49-97	6005	JO2K	-3	NAGOYA	Japan		49-79	6025	CP37	-25	ORURO	Bolivia	
49-97	6005	FK8AA	—	NOUMEA	N. Caledonia		49-79	6025	—	—	SINGAPORE	Malaya	
49-97	6005	—	—	DORNBIRN	Austria		49-75	6030	RW96	—	MOSCOW	USSR	
49-97	6005	—	—	S. PED. DE MACORIS	Dominican R.								

SHORT WAVE STATIONS OF THE WORLD (continued)

Wave Length	Frequency in Kc/s	Call Sign	Power KW/s	Station Name	Country	Log	Wave Length	Frequency in Kc/s	Call Sign	Power KW/s	Station Name	Country	Log
49-75	6030	CR7AA	—	LOURENÇO			49-59	6050	—	—	TOKIO	Japan	
				MARQUES	Mozambique		49-59	6050	—	—	MOSCOW	USSR	
49-75	6030	CFVP	-2	CALGARY	Canada		49-59	6050	—	—	TIFLIS	USSR	
49-75	6030	IRF	1	ROME	Italy		49-59	6050	HIIN	-75	TRUJILLO	Dominican R.	
49-75	6030	HP5B	-25	PANAMA CITY	Panama		49-55	6055	HER2	25	BERNE	Switzerland	
49-75	6030	OLR2B	17	PRAGUE	Czechoslovakia		49-55	6055	CXA14	1	COLONIA	Uruguay	
49-75	6030	XEKW	-5	MORELIA	Mexico		49-55	6055	HJFA	1	PEREIRA	Colombia	
49-75	6030	—	60	KOMSOMLSK	USSR		49-55	6055	—	—	KOMSOLOMSK	USSR	
49-75	6030	XGHT	—	HANTAN	China		49-55	6055	HJEX	—	CALI	Colombia	
49-75	6030	HVJ	25	VATICAN CITY	Italy		49-5	6060	CP47	—	COCHABAMBA	Bolivia	
49-71	6035	XELX	-5	GUADALAJARA	Mexico		49-5	6060	VUD3	5	DELHI	India	
49-71	6035	CXA30	1	MONTEVIDEO	Uruguay		49-5	6060	KNBI	50	DIXON, CALIF.	USA	
49-71	6035	MTCY	—	CHANGCHUN	China		49-5	6060	—	—	MOSCOW	USSR	
49-71	6035	GWS	50	LONDON	England		49-5	6060	VQ7LO	1-5	NAIROBI	Kenya	
49-71	6035	—	7-5	RANGOON	Burma		49-5	6060	WCBN	50	NEW YORK	USA	
49-71	6035	—	25	MONTE CARLO	Monaco		49-5	6060	—	5	BERLIN	Germany	
49-71	6035	OAX6B	-2	AREQUIPA	Peru		49-5	6060	—	—	ROME	Italy	
49-67	6040	YDD	—	BANDOENG	Java		49-5	6060	CKRZ	60	SACKVILLE	Canada	
49-67	6040	H58PD	—	BANGKOK	Thailand		49-5	6060	—	-5	BALBOA	Panama	
49-67	6040	—	—	BERLIN	Germany		49-46	6065	FHEB	-2	DAKAR	F. W. Africa	
49-67	6040	WRU5	50	BOSTON, MASS.	USA		49-46	6065	LRSI	5	BUENOS AIRES	Argentina	
49-67	6040	XG5A	—	NANKING	China		49-46	6065	SBO	12	MOTALA	Sweden	
49-67	6040	OAX6A	-2	AREQUIPA	Peru		49-46	6065	WLKS	1	KURE	Japan	
49-67	6040	CE604	1	SANTIAGO	Chile		49-46	6065	—	—	LILLE	France	
49-63	6045	XETW	-1	TAMPICO	Mexico		49-46	6065	EA9AH	1-5	TETUAN	S. Morocco	
49-63	6045	COBF	1	HAVANA	Cuba		49-46	6065	TIWS	5	PUNTARENAS	Costa Rica	
49-63	6045	XGHT	-1	HANTAN	China		49-46	6065	FIQA	1-25	TANANARIVE	Madagascar	
49-63	6045	ZGE	7-5	KUALA LUMPUR	Malaya		49-46	6065	VU7MC	-3	AKASHVANI	India	
49-61	6048	—	—	HANOI	F. Indo-China		49-46	6065	XGHT	—	HANTAN	China	
49-61	6048	HRA	1-5	TEGUCIGALPA	Honduras		49-46	6065	HC2FQ	-3	GUAYAQUIL	Ecuador	
49-59	6050	GSA	50	LONDON	England		49-42	6070	CFRX	1	TORONTO	Canada	
49-59	6050	XLRA	1	HANKOW	China		49-42	6070	GRR	50	LONDON	England	
49-59	6050	HP5F	-3	COLON	Panama		49-42	6070	RW79	10	PETROPAVLOVSK	USSR	

SHORT WAVE STATIONS OF THE WORLD (continued)

Wave Length	Frequency in Kc/s	Call Sign	Power KW/s	Station Name	Country	Log	Wave Length	Frequency in Kc/s	Call Sign	Power KW/s	Station Name	Country	Log
49-42	6070	—	5	BERLIN	Germany		49-26	6090	ZNS2	.75	NASSAU	Bahamas	
49-42	6070	CXA14	—	COLONIA	Uruguay		49-26	6090	XEBF	.2	JALAPA	Mexico	
49-38	6075	JZH2	—	TOKIO	Japan		49-26	6090	—	—	MOSCOW	USSR	
49-38	6075	CXA3	2.5	MONTEVIDEO	Uruguay		49-26	6090	—	2.5	BEIRUT	Lebanon	
49-38	6075	—	7.5	COLOMBO	Ceylon		49-26	6090	—	10	BELGRADE	Yugoslavia	
49-38	6075	HJCF	1	BOGOTÀ	Colombia		49-26	6090	XRRA	1	PEIPING	China	
49-38	6075	HIIG	.75	TRUJILLO	Dominican R.		49-26	6090	HOO	—	PANAMA CITY	Panama	
49-38	6075	—	.25	KARACHI	Pakistan		49-22	6095	—	—	PNOMPENH	F. Indo-China	
49-32	6080	WLWK	50	CINCINNATI, OHIO	USA		49-22	6095	ZRJ	1	JOHANNESBURG	S. Africa	
49-32	6080	—	50	BERLIN	Germany		49-22	6095	JZH	—	TOKIO	Japan	
49-32	6080	ZL7	10	WELLINGTON	New Zealand		49-22	6095	ZYB7	25	SAO PAULO	Brazil	
49-32	6080	—	75	MUNICH	Germany		49-22	6095	OAX4H	1	LIMA	Peru	
49-32	6080	CKFX	.1	VANCOUVER	Canada		49-22	6095	TGLB	—	MAZATENANGO	Guatemala	
49-32	6080	HI3X	.15	TRUJILLO	Dominican R.		49-22	6095	XGSC	—	NANKING	China	
49-32	6080	XGSB	—	NANKING	China		49-18	6100	TGOA	G	GUATEMALA CITY	Guatemala	
49-32	6080	JZH3	—	TOKIO	Japan		49-18	6100	KZBU	—	CEBU	Philippines	
49-32	6080	VP4RD	.5	PORT OF SPAIN	Trinidad		49-18	6100	VUD10	50	DELHI	India	
49-32	6080	—	10	UMTALI	S. Rhodesia		49-18	6100	VUD7	5	DELHI	India	
49-32	6080	ZEA	—	SALISBURY	S. Rhodesia		49-18	6100	KZRH	1	MANILA	Philippines	
49-30	6085	ZIZ	—	BASSETERRE	B. W. Indies		49-18	6100	—	12	WARSAW	Poland	
49-30	6085	ZAA	.3	TIRANA	Albania		49-18	6100	—	100	SHEPPARTON	Australia	
49-30	6085	ZNR	.5	ADEN	Arabia		49-18	6100	—	—	LEOPOLDVILLE	B. Congo	
49-30	6085	VUM2	.5	MADRAS	India		49-18	6100	WNRX	50	NEW YORK, N.Y.	USA	
49-30	6085	—	50	ROME	Italy		49-18	6100	CPII	.25	LA PAZ	Bolivia	
49-30	6085	LRV1	10	BUENOS AIRES	Argentina		49-14	6105	HIIZ	.2	TRUJILLO	Dominican R.	
49-30	6085	—	—	TABRIZ	Iran		49-14	6105	PRE9	5	FORTALEZA	Brazil	
49-30	6085	ZYK3	15	RECIFE	Brazil		49-14	6105	WLK5	1	KURE	Japan	
49-26	6090	GWM	50	LONDON	England		49-14	6105	XGSD	—	NANKING	China	
49-26	6090	CBFW	.25	MONTREAL	Canada		49-14	6105	HJFK	2.5	PERIERA	Colombia	
49-26	6090	CKOB	50	SACKVILLE	Canada		49-10	6110	GSL	50	LONDON	England	
49-26	6090	—	5	LUXEMBOURG	Luxembourg		49-10	6110	CP2	1	LA PAZ	Bolivia	
49-26	6090	LSX	.5	CORDOBA	Argentina		49-10	6110	HJFB	1	MANIZALES	Colombia	
49-26	6090	ZBW2	3	HONG KONG	China		49-10	6110	VUD3	5	DELHI	India	

SHORT WAVE STATIONS OF THE WORLD (continued)

Wave Length	Frequency In Kc/s	Call Sign	Power KW/s	Station Name	Country	Log	Wave Length	Frequency In Kc/s	Call Sign	Power KW/s	Station Name	Country	Log
49-10	6110	—	—	MOSCOW	USSR		48-90	6135	—	—	ROME	Italy	
49-06	6115	HIIG	.1	TRUJILLO	Dominican R.		48-90	6135	CR7AA	.25	LOURENÇO		
49-06	6115	—	50	KOMSOMOLSK	USSR						MARQUES	Mozambique	
49-06	6115	—	25	HAMBURG	Germany		48-90	6135	—	.3	MONTE CARLO	Monaco	
49-06	6115	OLR2C	25	PRAGUE	Czechoslovakia		48-86	6140	OQ2AA	50	LEOPOLDVILLE	B. Congo	
49-02	6120	LRX1	10	BUENOS AIRES	Argentina		48-86	6140	CXA5	2.5	MONTEVIDEO	Uruguay	
49-02	6120	OIX7	10	HELSINKI	Finland		48-86	6140	OAX8C	.3	IQUITOS	Peru	
49-02	6120	HP5H	.5	PANAMA CITY	Panama		48-86	6140	XGOY	35	CHUNGKING	China	
49-02	6120	—	2	UMTALI	S. Rhodesia		48-86	6140	HOQQ	—	PANAMA CITY	Panama	
49-02	6120	WOOC.	—	NEW YORK, N.Y.	USA		48-86	6140	KZRC	.3	CEBU	Philippines	
49-02	6120	—	—	SINGAPORE	Malaya		48-86	6140	HIIR	—	SAN CRISTOBAL	Dominican R.	
49-02	6120	KNBI	50	SAN FRANCISCO, CALIF.	USA		48-82	6145	HJDE	5	MEDELLIN	Colombia	
49-02	6120	XEUZ	1	MEXICO CITY	Mexico		48-82	6145	LRT	10	CORDOBA	Argentina	
48-98	6125	GWA	50	LONDON	England		48-82	6145	LRR1	10	ROSARIO	Argentina	
48-98	6125	HRQ	.75	SAN PEDRO SULA	Honduras		48-82	6145	HI1J	.3	S. PED. DE MACORIS	Dominican R.	
48-98	6125	CXA4	10	MONTEVIDEO	Uruguay		48-82	6145	HIIG	.15	TRUJILLO	Dominican R.	
48-98	6125	—	—	BANGKOK	Siam		48-78	6150	OAXIA	.25	LIMA	Peru	
48-98	6125	MTCY	25	HSINKING	China		48-78	6150	GRW	50	LONDON	England	
48-94	6130	COCD	1	HAVANA	Cuba		48-78	6150	CP12	.25	SUIRE	Bolivia	
48-94	6130	RW96	—	MOSCOW	USSR		48-78	6150	CE615	5	VALPARAISO	Chile	
48-94	6130	OAX7A	.1	CUZCO	Peru		48-78	6150	YV1RG	5	CABIMAS	Venezuela	
48-94	6130	CHNX	.5	HALIFAX	Canada		48-78	6150	YSPB	.4	SAN SALVADOR	El Salvador	
48-94	6130	LKJ	12	TROMSÖ	Norway		48-78	6150	VLR2	2.5	MELBOURNE	Australia	
48-94	6130	CP22	.3	LA PAZ	Bolivia		48-78	6150	CKRO	2	WINNIPEG	Canada	
48-94	6130	HC2FB	.3	GUAYAQUIL	Ecuador		48-78	6150	TIRH	.25	SAN JOSE	Costa Rica	
48-94	6130	XUBP	.5	AMOY	China		48-78	6150	—	10	BELGRADE	Yugoslavia	
48-94	6130	KZBI	—	CEBU	Philippines		48-78	6150	VUB2	10	BOMBAY	India	
48-90	6135	—	10	SINGAPORE	Malaya		48-74	6155	EQB	15	TEHERAN	Iran	
48-90	6135	ZIM4	7.5	LIMASSOL	Cyprus		48-74	6155	CS2WD	.5	LISBON	Portugal	
48-90	6135	FIQA	1.25	TANANARIVE	Madagascar		48-74	6155	XEDQ	.5	GUADALAJARA	Mexico	
48-90	6135	CP30	—	SANTA CRUZ	Bolivia		48-74	6155	CXA13	10	MONTEVIDEO	Uruguay	
48-90	6135	XEDP	—	MEXICO CITY	Mexico		48-74	6155	—	.3	VIENNA	Austria	
							48-70	6160	CBRX	.2	VANCOUVER	Canada	

SHORT WAVE STATIONS OF THE WORLD (continued)

Wave Length	Frequency in Kc/s	Call Sign	Power KW/s	Station Name	Country	Log	Wave Length	Frequency in Kc/s	Call Sign	Power KW/s	Station Name	Country	Log
48-70	6160	HICD	10	BOTOGA	Colombia		48-50	6185	LLI	—	FREDRIKSTAD	Norway	
48-70	6160	—	100	MUNICH	Germany		48-50	6185	XECC	—	PUEBLA	Mexico	
48-70	6160	—	—	MOSCOW	USSR		48-50	6185	HIL	·1	TRUJILLO	Dominican R.	
48-70	6160	XURA	—	TAI-PE	Formosa		48-50	6185	HCITR	·5	IBARRA	Ecuador	
48-70	6160	OAXIA	·4	CHICLAYO	Peru		48-47	6190	—	1	CAMBODGE	F. Indo-China	
48-70	6160	CP39	·3	COCHABAMBA	Bolivia		48-47	6190	HVJ	25	VATICAN CITY	Vatican State	
48-60	6165	—	12	SAIGON	F. Indo-China		48-47	6190	—	1	FRANKFURT	Germany	
48-66	6165	HI9T	·25	PUERTO PLATA	Dominican R.		48-47	6190	TXGI	·1	GUATEMALA CITY	Guatemala	
48-66	6165	HHCM	·15	PORT-AU-PRINCE	Haiti		48-47	6190	CP23	·25	TARIJA	Bolivia	
48-66	6165	HERJ	25	BERNE	Switzerland		48-47	6190	VUD7	25	DELHI	India	
48-66	6165	GWK	50	LONDON	England		48-47	6190	VUD10	100	DELHI	India	
48-66	6165	TILS	1	SAN JOSE	Costa Rica		48-47	6190	HIIA	·1	SANTIAGO	Dominican R.	
48-62	6170	ZJMS	7·5	LIMASSOL	Cyprus		48-47	6190	JLT	50	TOKIO	Japan	
48-62	6170	YDA2	·3	BANDOENG	Java		48-47	6190	WNRX	50	NEW YORK, N.Y.	USA	
48-62	6170	OAX4B	·35	CERO DE PASCO	Peru		48-47	6190	WNRI	50	NEW YORK, N.Y.	USA	
48-62	6170	OAX6G	·25	IQUITOS	Peru		48-47	6190	—	50	FRANKFURT	Germany	
48-62	6170	CXA2I	—	MONTEVIDEO	Uruguay		48-43	6195	GRN	50	LONDON	England	
48-62	6170	OLR2D	30	PRAGUE	Czechoslovakia		48-43	6195	—	1	TANGIER	N. Africa	
48-62	6170	OAXSE	·35	CHINCHA	Peru		48-43	6195	OAX1B	·5	PUIRA	Peru	
48-62	6170	KZFM	5	MANILA	Philippines		48-39	6200	—	100	ALLOUIS	France	
48-62	6170	—	—	ROME	Italy		48-39	6200	HJCT	10	BOGOTA	Colombia	
48-62	6170	CP37	·25	ORURO	Bolivia		48-39	6200	HIL	—	TRUJILLO	Dominican R.	
48-62	6170	KCBA	—	LOS ANGELES	USA		48-39	6200	CP5	·5	LA PAZ	Bolivia	
48-62	6170	ZRD	·5	DURBAN	Natal		48-39	6200	—	—	BAKU	USSR	
48-58	6175	XEXA	1	MEXICO CITY	Mexico		48-39	6200	YSG	—	SAN SALVADOR	El Salvador	
48-58	6175	HOB	—	PANAMA CITY	Panama		48-35	6205	YV6RD	1	BARCELONA	Venezuela	
48-58	6175	—	·3	BATAVIA	Java		48-31	6210	—	·5	NOUMEA	New Caledonia	
48-58	6175	YSHQ	1	SAN SALVADOR	El Salvador		48-31	6210	HC1AC	·2	QUITO	Ecuador	
48-54	6180	LRM	10	MENDOZA	Argentina		48-31	6210	—	5	HYDERABAD	India	
48-54	6180	GRO	50	LONDON	England		48-31	6210	ZRB	—	PRETORIA	S. Africa	
48-54	6180	—	10	STUTTGART	Germany		48-27	6215	SPI3	10	WARSAW	Poland	
48-54	6180	TIRCC	·3	SAN JOSE	Costa Rica		48-23	6220	CE622	5	SANTIAGO	Chile	
48-54	6180	HCIFM	·3	IBARRA	Ecuador		48-23	6220	OAX4M	—	MIRAFLORES	Peru	

SHORT WAVE STATIONS OF THE WORLD (continued)

Wave Length	Frequency in Kc/s	Call Sign	Power (KW/s)	Station Name	Country	Log	Wave Length	Frequency in Kc/s	Call Sign	Power KW/s	Station Name	Country	Log
48-23	6220	—	—	SARATOV	USSR		47-24	6350	OAX4H	1	LIMA	Peru	
48-23	6220	HJFB	3	MANIZALES	Colombia		47-14	6365	YDB3	-3	BATAVIA	Java	
48-23	6220	OAX4L	25	LIMA	Peru		47-11	6370	YDAI	1	BATAVIA	Java	
48-16	6230	TGJA	1	GUATEMALA CITY	Guatemala		47-05	6375	CSX	-75	BARCARENE	Portugal	
48-16	6230	HCJB	—	QUITO	Ecuador		47-05	6375	CS2HA	-5	LISBON	Portugal	
48-12	6235	HRD2	-3	LA CEIBA	Honduras		47-02	6380	H11X	-3	TRUJILLO	Dominican R.	
48-12	6235	XNTA	—	KAIFENG	China		46-99	6385	HI9B	-25	SANTIAGO	Dominican R.	
48-08	6240	HJCF	8	BOGOTA	Colombia		46-99	6385	YSHQ	—	SAN SALVADOR	El Salvador	
48	6250	YSUA	—	SAN SALVADOR	El Salvador		46-99	6385	HCISE	—	QUITO	Ecuador	
48	6250	CE625	5	SANTIAGO	Chile		46-99	6385	XPRA	1	KUNMING	China	
48	6250	ZFO	—	CAT BAY	B. W. Indies		46-87	6400	HC2RL	-25	GUAYAQUIL	Ecuador	
48	6250	CRBAA	—	MACAO	China		46-87	6400	TGQA	-3	GUATEMALA CITY	Guatemala	
47-96	6255	—	5	KORCA	Albania		46-80	6410	OAX4D	-25	LIMA	Peru	
47-96	6255	TGRA	—	GUATEMALA CITY	Guatemala		46-80	6410	TG3	—	GUATEMALA CITY	Guatemala	
47-8	6275	YSR	1	SAN SALVADOR	El Salvador		46-66	6430	H11R	—	SAN CRISTOBAL	Dominican R.	
47-8	6275	ZPA1	3	ASUNCION	Paraguay		46-58	6440	TGWB	1	GUATEMALA CITY	Guatemala	
47-76	6280	HCJB	1	QUITO	Ecuador		46-51	6450	COHI	5	SANTA CLARA	Cuba	
47-66	6295	TGLA	—	RETALHULEN	Guatemala		46-51	6450	YNWW	-5	MANAGUA	Nicaragua	
47-65	6295	OTM2	20	LEOPOLDVILLE	B. Congo		46-51	6450	YNZZ	-5	MANAGUA	Nicaragua	
47-62	6300	YNAS	—	MANAGUA	Nicaragua		46-23	6490	—	—	BATUM	USSR	
47-62	6300	—	—	LOANDA	P. Guinea		46-2	6495	OBX4B	—	CARRO DE PASCO	Peru	
47-62	6300	CP23	—	TARIJA	Bolivia		46-2	6495	—	—	PRIŠTINA	Yugoslavia	
47-54	6310	H11Z	-2	TRUJILLO	Dominican R.		46-2	6495	TGOA	-25	GUATEMALA CITY	Guatemala	
47-5	6315	OAX4M	-3	MIRAFLORES	Peru		46-2	6495	H12T	-25	NOUEL	Dominican R.	
47-46	6320	—	10	BADEN BADEN	Germany		46-15	6500	YSHP	—	SAN MIGUEL	El Salvador	
47-47	6320	EQB	15	TEHERAN	Iran		46-15	6500	—	—	HAIFA	Israel	
47-43	6325	COCV	1	HAVANA	Cuba		46-08	6510	CP40	-25	LA PAZ	Bolivia	
47-4	6330	CMHW	1	HAVANA	Cuba		45-87	6540	YNBH	-1	MANAGUA	Nicaragua	
47-4	6330	OAX6E	-3	AREQUIPA	Peru		45-8	6550	XGNC	—	NANKING	China	
47-35	6335	TGTA	1	GUATEMALA CITY	Guatemala		45-46	6600	—	—	MOSCOW	USSR	
47-35	6335	—	—	GIBRALTAR	Gibraltar		45-46	6600	—	—	BATAVIA	Java	
47-27	6345	HE12	25	BERNE	Switzerland		45-32	6620	TG2	-3	GUATEMALA CITY	Guatemala	
47-24	6350	HRP1	-15	SAN PEDRO	Honduras		45-25	6630	H1T	-1	TRUJILLO	Dominican R.	

SHORT WAVE STATIONS OF THE WORLD (continued)

Wave Length	Frequency in Kc/s	Call Sign	Power KW/s	Station Name	Country	Log	Wave Length	Frequency in Kc/s	Call Sign	Power KW/s	Station Name	Country	Log
45-25	6630	HC2RL	-2	GUAYAQUIL	Ecuador		44-21	6785	ZJN6	7-5	JAFFA	Israel	
45-12	6650	YCN2	-15	PONTIANAK	Dutch E. Indies		44-12	6800	—	—	SOERABAIA	Java	
45-05	6660	HHCA	-3	PORT-AU-PRINCE	Haiti		43-99	6820	—	15	TASHKENT	USSR	
45-05	6660	TGZA	-3	ZACAPA	Guatemala		43-99	6820	SUP2	10	CAIRO	Egypt	
44-97	6670	TGBC	-3	MAZATENANGO	Guatemala		43-89	6835	—	—	TEL AVIV	Israel	
44-97	6670	YVQ	10	SANTA RITA	Venezuela		43-81	6850	—	—	KHORREBABAD	Iran	
44-97	6670	HC35B	-3	LOGA	Ecuador		43-81	6850	YNOW	-75	MANAGUA	Nicaragua	
44-90	6680	HBQ	20	BERNE	Switzerland		43-73	6860	TGRB	—	GUATEMALA CITY	Guatemala	
44-90	6680	SUZ2	10	CAIRO	Egypt		43-67	6870	HC4EB	-4	MANTA	Ecuador	
44-84	6690	—	—	ERIVAN	USSR		43-61	6880	—	—	ALMA ATA	USSR	
44-84	6690	PYH6	-5	SAO PAULO	Brazil		43-61	6880	YNWW	—	GRANADA	Nicaragua	
44-84	6690	—	—	MOSCOW	USSR		43-58	6885	SVD	—	ATHENS	Greece	
44-78	6700	YNCNM	—	MANAGUA	Nicaragua		43-48	6900	TGQA	-3	QUEZALTENANGO	Guatemala	
44-78	6700	HC2LVC	-2	BAHIA	Ecuador		43-48	6900	JVW2	25	YAMATA	Japan	
44-78	6700	OAXIA	—	CHICLAYO	Peru		43-4	6910	YNQ	—	MANAGUA	Nicaragua	
44-78	6700	TIEP	—	SAN JOSE	Costa Rica		43-37	6915	YVKB	1	CARACAS	Venezuela	
44-71	6710	—	—	JAFFA	Israel		43-37	6915	FZK6	-5	DAKAR	F. W. Africa	
44-71	6710	YNCMO	-1	MANAGUA	Nicaragua		43-22	6940	—	—	MOSCOW	USSR	
44-71	6710	CP22	-25	POTOSI	Bolivia		43-22	6940	—	—	BATAVIA	Java	
44-71	6710	OAX4G	—	LIMA	Peru		43-16	6950	YNEQ	-25	MANAGUA	Nicaragua	
44-64	6720	PLT	1	BANDOENG	Java		43-16	6950	—	—	TEL AVIV	Israel	
44-59	6730	H13C	-1	LA ROMANA	Dominican R.		42-98	6980	FOBAA	-25	PAPEETE	Tahiti	
44-44	6750	JVT	—	TOKIO	Japan		42-98	6980	—	—	MOSCOW	USSR	
44-44	6750	PMH	-15	BANDOENG	Java		42-92	6990	—	—	TIBERIAS	Israel	
44-38	6760	YNVP	1	MANAGUA	Nicaragua		42-92	6990	—	-1	BISSAO	P. Guinea	
44-38	6760	YNDS	-3	MANAGUA	Nicaragua		42-86	7000	HCIVT	-25	AMBATO	Ecuador	
44-38	6760	ZNR	-3	ADEN	Arabia		42-86	7000	—	—	LJUBLJANA	Yugoslavia	
44-31	6770	—	7-5	SINGAPORE	Malaya		42-86	7000	XPPA	—	KWEICHOW	China	
44-31	6770	CP49	-5	LA PAZ	Bolivia		42-86	7000	—	—	BRAZZAVILLE	F. E. Africa	
44-31	6770	—	—	MOSCOW	USSR		42-83	7005	FETI	-25	VALLADOLID	Spain	
44-21	6785	H12A	-25	SANTIAGO	Dominican R.		42-83	7005	XPSA	1	KWEIYANG	China	
44-21	6785	HNF	—	BAGHDAD	Iraq		42-83	7005	JKA	5	NAZAKI	Japan	
44-21	6785	ZNB	-5	MAFEKING	S. Africa		42-8	7010	EAJ9	1	MALAGA	Spain	

SHORT WAVE STATIONS OF THE WORLD (continued)

Wave Length	Frequency in Kc/s	Call Sign	Power KW/s	Station Name	Country	Log	Wave Length	Frequency in Kc/s	Call Sign	Power KW/s	Station Name	Country	Log
42-8	7010	EDV10	1	MADRID	Spain		42-02	7140	CR6RE	—	MALANJE	Angola	
42-8	7010	CR6RS	—	BENGUELLA	Angola		42-02	7140	HC4FA	·1	PORTOVIEJO	Ecuador	
42-76	7015	CSX2	1	PONTA DELGADA	Azores		42-02	7140	V3US	·1	PORT LOUIS	Mauritius	
42-73	7020	EAJ9	·25	MALAGA	Spain		41-96	7150	GRT	50	LONDON	England	
42-64	7035	EAJ3	3	VALENCIA	Spain		41-96	7150	OQ2AB	·2	ELIZABETHVILLE	B. Congo	
42-61	7040	YS1	·15	SAN SALVADOR	El Salvador		41-96	7150	CR6RD	·3	LOBITO	Angola	
42-58	7045	FET15	·25	CORDOVA	Spain		41-96	7150	XGOY	10	CHUNGKING	China	
42-58	7045	HHC8	—	PORT-AU-PRINCE	Haiti		41-93	7155	CR7IB	—	BEIRA	Mozambique	
42-58	7045	VP4TH	—	PORT OF SPAIN	Trinidad		41-9	7160	HC1BF	·5	QUITO	Ecuador	
42-55	7050	—	—	OTAVALO	Ecuador		41-87	7165	CR6RI	·1	MALANJE	Angola	
42-55	7050	C52M2	·5	LISBON	Portugal		41-87	7165	—	—	MOSCOW	USSR	
42-55	7050	ZOY	5	ACCRA	Gold Coast		41-87	7165	CR6RE	·15	NEW LISBON	Angola	
42-55	7050	XNCR	—	YENAN	China		41-87	7165	H18Z	·25	SANTIAGO	Dominican R.	
42-52	7055	CR6RF	—	BENGUELLA	Angola		41-84	7170	—	—	WARSAW	Poland	
42-52	7055	HC2CM	·1	GUAYAQUIL	Ecuador		41-84	7170	—	—	ST. DENIS	Reunion Isle	
42-52	7055	OQ2AB	·2	ELIZABETHVILLE	B. Congo		41-84	7170	FIQA	—	TANANARIVE	Madagascar	
42-49	7060	HNA	·75	BAGHDAD	Iraq		41-81	7175	CR6RB	·2	LOANDA	Angola	
42-49	7060	CPI1	·7	LA PAZ	Bolivia		41-81	7175	CR6AA	—	LOBITO	Angola	
42-4	7075	GRS	50	LONDON	England		41-81	7175	—	·2	VIENNA	Austria	
42-4	7075	—	·3	MANAMA	Bahrein Isle		41-81	7175	—	—	MOSCOW	USSR	
42-37	7080	EA9AA	1	TANGIER	Tangier		41-75	7185	GRK	50	LONDON	England	
42-34	7085	Y15KG	—	BAGHDAD	Iraq		41-75	7185	—	7·5	COLOMBO	Ceylon	
42-31	7090	EA9AI	—	TETUAN	S. Morocco		41-75	7185	EDV10	—	MADRID	Spain	
42-25	7100	EAJ7	1	MADRID	Spain		41-72	7190	—	—	MOSCOW	USSR	
42-25	7100	YDA3	—	BANDOENG	Java		41-66	7200	OQZAC	·3	ELIZABETHVILLE	B. Congo	
42-25	7100	XGAF	—	NANKING	China		41-66	7200	CR7BI	—	BEIRA	Mozambique	
42-25	7100	CR6RS	—	BENGUELLA	Angola		41-66	7200	—	10	SINGAPORE	Malaya	
42-25	7100	YNET	—	MASAYA	Nicaragua		41-66	7200	RW96	—	MOSCOW	USSR	
42-13	7120	VQ6MY	—	HARGEISA	B. Somaliland		41-66	7200	HC2CM	·25	GUAYAQUIL	Ecuador	
42-13	7120	GRM	—	LONDON	England		41-66	7200	YDP2	·2	MEDAN	Sumatra	
42-13	7120	OAX1A	—	CHICLAYO	Peru		41-64	7205	—	1·5	HUÉ	F. Indo-China	
42-07	7130	FET22	·25	OVIEDO	Spain		41-64	7205	H19U	·1	PUERTO PLATA	Dominican R.	
42-02	7140	EDV10	·15	MADRID	Spain		41-61	7210	HE13	25	BERNE	Switzerland	

SHORT WAVE STATIONS OF THE WORLD (continued)

Wave Length	Fre- quency in Kc/s	Call Sign	Power KW/s	Station Name	Country	Log	Wave Length	Fre- quency in Kc/s	Call Sign	Power KW/s	Station Name	Country	Log
41-61	7210	FZK6	75	DAKAR	F. W. Africa		41-32	7260	GSU	50	LONDON	England	
41-61	7210	VUD11	20	DELHI	India		41-32	7260	OZQ	6	SKAMLEBAK	Denmark	
41-61	7210	VUC2	10	CALCUTTA	India		41-32	7260	CS2MB	1	LISBON	Portugal	
41-61	7210	GWL	50	LONDON	England		41-32	7260	YDP2	—	MEDAN	Sumatra	
41-61	7210	LLS	2.5	TROMSÖ	Norway		41-27	7270	YDB3	—	BATAVIA	Java	
41-61	7210	—	—	HÖRBY	Sweden		41-27	7270	EABAB	—	TENERIFFE	Canaries	
41-61	7210	ZAA	—	TIRANA	Albania		41-27	7270	YSO	—	SAN SALVADOR	El Salvador	
41-58	7215	YSI	1	SAN SALVADOR	El Salvador		41-27	7270	—	—	MOSCOW	USSR	
41-58	7215	VLQ2	10	BRISBANE	Australia		41-27	7270	ZKG5	—	PITCAIRN	Pitcairn Isle	
41-55	7220	ZQP	5	LUSAKA	N. Rhodesia		41-27	7270	—	—	ROME	Italy	
41-55	7220	—	1.25	LAKATAMIA	Cyprus		41-27	7270	—	—	DALAT	F. Indo China	
41-55	7220	KOFA	5	SALZBURG	Austria		41-27	7270	HCICQ	15	QUITO	Ecuador	
41-55	7220	—	7.5	SINGAPORE	Malaya		41-24	7275	H12T	7.5	TRUJILLO	Dominican R.	
41-52	7225	H18Z	—	SANTIAGO	Dominican R.		41-21	7280	VLA5	100	SHEPPARTON	Australia	
41-52	7225	XURA	—	TAIWAN	China		41-21	7280	HVI	25	VATICAN CITY	Vatican State	
41-49	7230	GSW	50	LONDON	England		41-21	7280	GWN	50	LONDON	England	
41-49	7230	KWIX	—	SAN FRANCISCO	USA		41-21	7280	—	100	PARIS	France	
41-44	7240	—	100	PARIS	France		41-21	7280	VL5	5	PORT MORESBY	N. Guinea	
41-44	7240	LLR	5	OSLO	Norway		41-21	7280	JKA	—	NAZAKI	Japan	
41-44	7240	VUB2	10	BOMBAY	India		41-21	7280	VLC8	50	SHEPPARTON	Australia	
41-44	7240	EA9AH	15	TETUAN	S. Morocco		41-21	7280	—	5	LUSAKA	N. Rhodesia	
41-44	7240	VUDB	7.5	DELHI	India		41-15	7290	VUD5	100	DELHI	India	
41-44	7240	V545	—	JESSELTON	Borneo		41-15	7290	—	85	MUNICH	Germany	
41-44	7240	—	65	TRONDHEIM	Norway		41-15	7290	BFN	25	HAMBURG	Germany	
41-38	7250	PJCI	3	WILLIMSTAD	Curacao		41-15	7290	—	—	CAPE HATTIEN	Haiti	
41-38	7250	—	85	MUNICH	Germany		41-12	7295	YD13	3	SOERABAIA	Java	
41-38	7250	—	1	ROME	Italy		41-12	7295	ZOY	1.5	ACCRA	Gold Coast	
41-38	7250	HVJ	25	VATICAN CITY	Vatican State		41-12	7295	—	—	PORT LOUIS	Mauritius	
41-38	7250	GWJ	50	LONDON	England		41-1	7300	—	7.5	ATHENS	Greece	
41-38	7250	WNRX	50	BOSTON	USA		41-1	7300	—	—	MOSCOW	USSR	
41-35	7255	JKC	5	YAMATA	Japan		41-1	7300	CR6RC	1	LUANDA	Angola	
41-35	7255	VUM2	10	MADRAS	India		40-98	7320	GRJ	50	LONDON	England	
41-35	7255	CR718	3	BEIRA	Mozambique		40-98	7320	—	—	SANA	Yemen	

SHORT WAVE STATIONS OF THE WORLD (continued)

Wave Length	Frequency in Kc/s	Call Sign	Power KW/s	Station Name	Country	Log	Wave Length	Frequency in Kc/s	Call Sign	Power KW/s	Station Name	Country	Log
40-98	7320	YSN	1	SAN SALVADOR	El Salvador		38-54	7785	—	—	STALINABAD	USSR	
40-93	7330	—	—	MOSCOW	USSR		38-54	7785	—	—	PALEMBANG	Sumatra	
40-81	7350	WFI	—	ST. THOMAS	Virgin Isles		38-22	7850	ZAA	3	TIRANA	Albania	
40-81	7350	HCZAN	.25	GUAYAQUIL	Ecuador		38-13	7865	SUX	10	CAIRO	Egypt	
40-81	7350	YNAO	.25	MANAGUA	Nicaragua		38-13	7865	—	—	BIAK	D. Guinea	
40-65	7380	HEU3	25	BERNE	Switzerland		38-1	7875	HCIGP	.2	QUITO	Ecuador	
40-65	7380	—	.5	MADRID	Spain		37-88	7920	—	—	SOFIA	Bulgaria	
40-54	7400	YNXA	.1	MASAYA	Nicaragua		37-82	7933	HLKA	6	SEOUL	Korea	
40-54	7400	YVKC	10	CARACAS	Venezuela		37-82	7935	PSL	15	RIO DE JANEIRO	Brazil	
40-49	7410	PST2	1.5	SAO PAULO	Brazil		37-82	7935	FET	1.5	ALICANTE	Spain	
40-43	7420	YHP5	—	SOERAKARTA	Java		37-78	7940	QOM4	—	BISSAO	Port Guinea	
40-43	7420	YNFT	—	GRANADA	Nicaragua		37-74	7950	FIA6	.75	DOUALA	F. Cameroons	
40-43	7420	LPC	—	USHUAIA	Argentina		37-69	7960	—	—	SHIRAZ	Iran	
40-38	7430	—	—	LENINGRAD	USSR		37-59	7980	—	—	BIAK	D. Guinea	
40-30	7445	FG8HA	.1	BASSE-TERRE	Guadeloupe		37-5	8000	PMD	1	BANDOENG	Java	
40-30	7445	ZRB	—	PRETORIA	S. Africa		37-5	8000	—	—	ATHENS	Greece	
40-21	7460	YNTZ	.1	MASAYA	Nicaragua		37-45	8010	YNMG	.15	MANAGUA	Nicaragua	
40-05	7495	—	—	TIFLIS	USSR		37-45	8010	YNS	—	TEUSTEPE	Nicaragua	
40-05	7495	XNCR	—	SHENSI	China		37-34	8035	ODE	2.5	BEIRUT	Syria	
40	7500	YNFT	—	GRANADA	Nicaragua		37-08	8090	YCN3	.25	PONTIANAK	D. Guinea	
40	7500	—	1	DAMASCUS	Syria		37-08	8090	CR6RA	1.5	BENGUELA	Angola	
40	7500	—	—	MOSCOW	USSR		37-04	8100	—	—	MOSCOW	USSR	
39-47	7600	ZEA	—	SALISBURY	S. Rhodesia		37-04	8100	—	—	JERUSALEM	Israel	
39-53	7615	—	100	BERLIN	Germany		36-92	8125	JVP	30	NAZAKI	Japan	
39-53	7615	YNLAT	.25	GRANADA	Nicaragua		36-92	8125	ZHV5	—	FREETOWN	Sierra Leone	
39-21	7650	HLKB	—	PUSAN	Korea		36-80	8150	—	—	FUNCHAL	Madeira	
39-21	7650	—	—	MOSCOW	USSR		36-63	8190	YNXW	.15	MANAGUA	Nicaragua	
39-17	7660	YNDG	.25	LEON	Nicaragua		36-5	8215	—	3	SHCODRAI	Albania	
39-12	7670	—	—	SOFIA	Bulgaria		36-4	8240	CR6RG	.15	DONDO	Angola	
39-12	7670	SUW2	10	CAIRO	Egypt		36-19	8290	ZKG	—	PITCAIRN	Pitcairn Isle	
38-96	7700	CR6RM	.1	MOCAMEDIS	Angola		35-97	8350	XUPB	—	AMOY	China	
38-96	7700	ZMB6	.5	APIA	Samoa		35-71	8400	HTXI	.3	MANAGUA	Nicaragua	
18-54	7785	—	—	MOSCOW	USSR		35-65	8415	YDI	.3	SOERABAIA	Java	

SHORT WAVE STATIONS OF THE WORLD (continued)

Wave Length	Frequency in Kc/s	Call Sign	Power KW/s	Station Name	Country	Log	Wave Length	Frequency in Kc/s	Call Sign	Power KW/s	Station Name	Country	Log
35-55	8440	XGIO	—	NANKING	China		32-43	9250	—	4	BUCAREST	Rumania	
35-55	8440	YNCHA	—	MANAGUA	Nicaragua		32-42	9255	CR8AA	.25	MACAO	China	
35-29	8500	—	—	BRAZZAVILLE	F. Congo		32-38	9265	YFA4	5	MACASSAR	Celebes	
35-09	8550	—	—	KHABAROVSK	USSR		32-33	9275	COCX	1	HAYANA	Cuba	
34-74	8635	ZKG3	—	PITCAIRN	Pitcairn Isle		32-22	9310	—	3	SOFIA	Bulgaria	
34-72	8640	GIC	—	GREENWICH	England		32-2	9320	LRS	10	BUENOS AIRES	Argentina	
34-62	8665	COJK	1	CAMAGUEY	Cuba		32-19	9330	—	20	ANDORRA	Andorra	
34-48	8700	COCO	5	HAVANA	Cuba		32-15	9340	OAX4J	.25	LIMA	Peru	
34-01	8920	—	—	KHABAROVSK	USSR		32-06	9360	—	—	RODINA	Bulgaria	
34	8825	COCQ	5	HAVANA	Cuba		32-06	9360	—	—	CETINJE	Yugoslavia	
33-86	8860	WXFG	—	ADAK	Aleutians		32-02	9370	—	40	MADRID	Spain	
33-63	8920	—	—	CHERIBON	Java		31-98	9380	OTM2	20	LEOPOLDVILLE	B. Congo	
33-59	8930	—	—	BOEKITT	Sumatra		31-98	9380	COBC	1	HAVANA	Cuba	
33-59	8930	KES2	—	BOLINAS	Calif., U.S.A.		31-98	9380	OAX4W	.75	LIMA	Peru	
33-48	8960	COKG	1-2	SANTIAGO	Cuba		31-88	9410	GRI	50	LONDON	England	
33-3	9010	KEJ	—	SAN FRANCISCO	USA		31-88	9410	—	—	POINTE-A-PITRE	Guadeloupe	
33-24	9025	COBZ	1	HAVANA	Cuba		31-81	9430	CP2I	.3	SUCRE	Bolivia	
33-16	9045	HRA	1	TEGUCIGALPA	Honduras		31-81	9430	XERQ	—	MEXICO CITY	Mexico	
33-16	9045	—	—	MOSCOW	USSR		31-78	9440	COCH	5	HAVANA	Cuba	
33-04	9080	CNR3	2-5	RABAT	Morocco		31-78	9440	FZI	7-5	BRAZZAVILLE	B. Congo	
32-93	9110	ZRB	—	WATERKLOOF	Pretoria		31-77	9445	XPPA	1	KWEIYANG	China	
32-89	9120	XOL2	—	NANKING	China		31-73	9455	LRYI	10	BUENOS AIRES	Argentina	
32-8	9145	YVR	20	SANTA RITA	Venezuela		31-71	9460	CPI	.25	LA PAZ	Bolivia	
32-73	9165	CR6RB	—	BENGUELA	Angola		31-7	9465	TAP	20	ANKARA	Turkey	
32-61	9200	CE920	—	PUNTARENAS	Chile		31-68	9470	—	—	BATAVIA	Java	
32-61	9200	ZLN10	—	WELLINGTON	New Zealand		31-68	9470	CR6RA	.25	LOANDA	Angola	
32-57	9210	HI2G	—	TRUJILLO	Dominican R.		31-66	9475	CR6RN	1	LOANDA	Angola	
32-57	9210	OQ2RC	—	LEOPOLDVILLE	B. Congo		31-65	9480	—	—	MOSCOW	USSR	
32-5	9230	CR8AA	—	MACAO	China		31-63	9485	CP38	.25	LA PAZ	Bolivia	
32-49	9235	COBQ	1	HAVANA	Cuba		31-58	9500	XEWVW	10	MEXICO CITY	Mexico	
32-49	9235	LQHE	—	BUENOS AIRES	Argentina		31-58	9500	OAX6D	.3	AREQUIPA	Peru	
32-49	9235	CR6RH	—	HUILLA	Angola		31-58	9500	—	—	SVERDLOVSK	USSR	
32-43	9250	YSF	—	SAN SALVADOR	El Salvador		31-58	9500	KZPI	—	MANILA	Philippines	

SHORT WAVE STATIONS OF THE WORLD (continued)

Wave Length	Frequency in Kc/s	Call Sign	Power KW/s	Station Name	Country	Log	Wave Length	Frequency in Kc/s	Call Sign	Power KW/s	Station Name	Country	Log
31-58	9500	OIX2	—	LAHTI	Finland		31-45	9540	ZL2	10	WELLINGTON	New Zealand	
31-58	9500	CE950	—	SANTIAGO	Chile		31-45	9540	VLR	10	MELBOURNE	Australia	
31-56	9505	OLR3B	30	PRAGUE	Czechoslovakia		31-45	9540	—	—	MOSCOW	USSR	
31-56	9505	YUC	10	BELGRADE	Yugoslavia		31-45	9540	VE9AI	25	EDMONTON	Canada	
31-56	9505	HOLA	20	COLON	Panama		31-45	9540	VLG2	10	LYNDHURST	Australia	
31-56	9505	JVW2	20	KAWACHI	Japan		31-45	9540	—	100	ALLOUIS	France	
31-55	9510	GSB	50	LONDON	England		31-45	9540	—	7	RANGOON	Burma	
31-53	9515	—	—	GENEVA	Switzerland		31-45	9540	YSLLI	1	SAN SALVADOR	El Salvador	
31-53	9515	—	80	ALLOUIS	France		31-44	9545	LRY	5	BELGRANO	Argentina	
31-51	9520	VLW7	2	PERTH	Australia		31-44	9545	XEFT	3	VERA CRUZ	Mexico	
31-51	9520	—	1	COLOMBO	Ceylon		31-44	9545	—	—	KOMSOMOLSK	USSR	
31-51	9520	OZF	60	COPENHAGEN	Denmark		31-41	9550	XOPB	5	HANGCHOW	China	
31-51	9520	VL7	75	PORT MORESBY	New Guinea		31-41	9550	OLR3A	—	PRAGUE	Czechoslovakia	
31-51	9520	CBFR	7.5	MONTREAL	Canada		31-41	9550	YDD3	—	BATAVIA	Java	
31-51	9520	CP6	—	LA PAZ	Bolivia		31-41	9550	VUB2	10	BOMBAY	India	
31-51	9520	TPB12	100	PARIS	France		31-41	9550	HVJ	25	VATICAN CITY	Vatican State	
31-49	9525	—	5	JOHANNESBURG	S. Africa		31-41	9550	YDC	3	MACASSAR	Celebes	
31-59	9525	OQ2AA	1	LEOPOLDVILLE	B. Congo		31-41	9550	—	100	ALLOUIS	France	
31-49	9525	GWJ	50	LONDON	England		31-41	9550	GWB	50	LONDON	England	
31-49	9525	JVU	40	NAZAKI	Japan		31-4	9555	XETT	5	MEXICO CITY	Mexico	
31-49	9525	WGEO	100	SCHENECTADY	USA		31-38	9560	JVW4	20	KAWACHI	Japan	
31-49	9525	H12L	5	TRUJILLO	Dominican R.		31-38	9560	—	10	PARIS	France	
31-49	9525	ZBW3	2.5	HONG KONG	China		31-38	9560	TPB12	100	LES ESSARTS	France	
31-48	9530	—	—	LUXEMBOURG	Luxembourg		31-36	9565	ZYK3	15	RECIFE	Brazil	
31-48	9530	KGE1	50	SAN FRANCISCO	USA		31-36	9565	OAX4T	10	LIMA	Peru	
31-48	9530	VUC2	10	CALCUTTA	India		31-36	9565	—	25	VIENNA	Austria	
31-48	9530	ZD14	3	BATHURST	Gambia		31-36	9565	—	50	KOMSOMOLSK	USSR	
31-46	9535	HER4	100	BERNE	Switzerland		31-35	9570	KZRM	—	MANILA	Philippines	
31-46	9535	SBU	12	MOTALA	Sweden		31-35	9570	KWID	100	SAN FRANCISCO	USA	
31-45	9540	OAX5C	—	LIMA	Peru		31-35	9570	KWIX	50	SAN FRANCISCO	USA	
31-45	9540	VLB	100	SHEPPARTON	Australia		31-35	9570	WRUW	20	BOSTON, MASS.	USA	
31-45	9540	LKJ	5	OSLO	Norway		31-35	9570	—	3	ALGIERS	Algeria	
31-45	9540	—	85	MUNICH	Germany		31-35	9570	—	100	PARIS	France	

SHORT WAVE STATIONS OF THE WORLD (continued)

Wave Length	Frequency in Kc/s	Call Sign	Power KW/s	Station Name	Country	Log	Wave Length	Frequency in Kc/s	Call Sign	Power KW/s	Station Name	Country	Log
31-34	9575	—	—	SALZBURG	Austria		31-17	9625	GWO	50	LONDON	England	
31-32	9580	VLH3	10	MELBOURNE	Australia		31-17	9625	VP4RD	-75	PORT OF SPAIN	Trinidad	
31-32	9580	GSC	50	LONDON	England		31-15	9630	CBFO	7-5	MONTREAL	Canada	
31-3	9585	OAX4K	—	LIMA	Peru		31-15	9630	CKLO	50	SACKVILLE	Canada	
31-3	9585	—	100	ALLOUIS	France		31-15	9630	VUD10	10	DELHI	India	
31-3	9585	CE960	1-25	SANTIAGO	Chile		31-15	9630	CP12	-25	SUIRE	Bolivia	
31-28	9590	VUD5	10	DELHI	India		31-15	9630	—	50	MILAN	Italy	
31-28	9590	VUM2	10	MADRAS	India		31-15	9630	VUB2	10	BOMBAY	India	
31-28	9590	PCJ	40	HILVERSUM	Holland		31-12	9640	KZRH	1	MANILA	Philippines	
31-28	9590	CP35	-5	LA PAZ	Bolivia		31-12	9640	CXA8	4	MONTEVIDEO	Uruguay	
31-27	9595	—	1-5	ATHLONE	Eire		31-12	9640	YVKC	2-5	CARACAS	Venezuela	
31-25	9600	GRY	50	LONDON	England		31-12	9640	GVZ	50	LONDON	England	
31-25	9600	XEYU	-25	MEXICO CITY	Mexico		31-12	9640	COX	5	HAVANA	Cuba	
31-24	9605	JKE	5	YAMATA	Japan		31-12	9640	CHMD	50	SACKVILLE	Canada	
31-24	9605	HP5J	-25	PANAMA CITY	Panama		31-1	9645	ZIM8	—	JAFFA	Israel	
31-24	9605	—	5	CAPETOWN	S. Africa		31-09	9650	WCBN	50	NEW YORK	USA	
31-24	9605	—	—	ATHENS	Greece		31-09	9650	KNBA	50	DIXON, CALIF.	USA	
31-22	9610	CBFX	7-5	MONTREAL	Canada		31-09	9650	KRHO	100	HONOLULU	Hawaii	
31-22	9610	XERQ	-5	MEXICO CITY	Mexico		31-09	9650	—	—	OMDURMAN	Sudan	
31-22	9610	CHLS	50	SACKVILLE	Canada		31-09	9650	—	—	MOSCOW	USSR	
31-22	9610	ZYCB	25	RIO DE JANEIRO	Brazil		31-07	9655	XGOY	30	CHUNGKING	China	
31-22	9610	VLW5	2-5	PERTH	Australia		31-07	9655	JKF	5	NAZAKI	Japan	
31-22	9610	LLG	10	FREDRIKSTAD	Norway		31-07	9655	HED6	50	BERNE	Switzerland	
31-2	9615	VLB9	100	SHEPPARTON	Australia		31-07	9655	CR7BI	10	LOURENÇO		
31-2	9615	—	-1	ST. DENIS	Reunion Isle						MARQUES	Mozambique	
31-2	9615	TIPG	5	SAN JOSE	Costa Rica		31-06	9660	LRX	6	BUENOS AIRES	Argentina	
31-2	9615	VLA2	100	SHEPPARTON	Australia		31-06	9660	GWP	50	LONDON	England	
31-2	9615	KZFM	-5	MANILA	Philippines		31-06	9660	HVJ	25	VATICAN CITY	Vatican State	
31-19	9620	VUD3	5	DELHI	India		31-06	9660	HIBM	1	PORT-AU-PRINCE	Haiti	
31-19	9620	—	25	REALTORT	France		31-06	9660	VUD11	10	DELHI	India	
31-19	9620	CXA6	25	MONTEVIDEO	Uruguay		31-06	9660	VLQ3	10	BRISBANE	Australia	
31-19	9620	ETA	1	ADDIS ABABA	Ethiopia		31-04	9665	—	-25	VIENNA	Austria	
31-17	9625	XEBT	-5	MEXICO CITY	Mexico		31-02	9670	VUD4	10	DELHI	India	

SHORT WAVE STATIONS OF THE WORLD (continued)

Wave Length	Frequency in Kc/s	Call Sign	Power KW/s	Station Name	Country	Log	Wave Length	Frequency in Kc/s	Call Sign	Power KW/s	Station Name	Country	Log
31-02	9670	WNRX	50	NEW YORK	USA		30-83	9730	XGOA	—	NANKING	China	
31-02	9670	OLR3C	35	PRAGUE	Czechoslovakia		30-83	9730	—	12	LEIPZIG	Germany	
31-01	9675	—	25	PARIS	France		30-8	9740	—	—	MOSCOW	USSR	
31-01	9675	GWT	50	LONDON	England		30-8	9740	CS2MH	10	LISBON	Portugal	
31-01	9675	—	—	KHARTOUM	Sudan		30-77	9750	KCBR	200	SAN FRANCISCO	USA	
30-99	9680	EQC	—	TEHERAN	Iran		30-77	9750	XNRA	1	LANCHOW	China	
30-99	9680	VLCZ	50	SHEPPARTON	Australia		30-74	9760	—	—	MOSCOW	USSR	
30-99	9680	VLG8	10	LYNDHURST	Australia		30-74	9760	TGWA	10	GUATEMALA CITY	Guatemala	
30-99	9680	XEQQ	1	MEXICO CITY	Mexico		30-71	9770	PRL4	—	RIO DE JANEIRO	Brazil	
30-98	9685	—	100	PARIS	France		30-71	9770	OTC2	50	LEOPOLDVILLE	B. Congo	
30-96	9690	—	7.5	SINGAPORE	Malaya		30-64	9790	—	—	MENADO	Celebes	
30-96	9690	GRX	50	LONDON	England		30-61	9800	—	—	MOSCOW	USSR	
30-96	9690	KZOK	5	MANILA	Philippines		30-61	9800	HNF	1	BAGHDAD	Iraq	
30-96	9690	HJCAB	1.5	BOGOTA	Colombia		30-57	9815	OAX5C	2	ICA	Peru	
30-96	9690	LRA1	10	BUENOS AIRES	Argentina		30-55	9820	XGOE	—	KWEILIN	China	
30-95	9695	JKG	5	KAWACHI	Japan		30-53	9825	GRH	50	LONDON	England	
30-95	9695	FIQA	3	TANANARIVE	Madagascar		30-5	9835	COBL	1	HAVANA	Cuba	
30-95	9695	TIRNH	1	HEREDIA	Costa Rica		30-4	9870	—	1	JOHANNESBURG	S. Africa	
30-93	9700	KCBF	50	SAN FRANCISCO	USA		30-4	9870	HC4NL	25	QUITO	Ecuador	
30-93	9700	WLWS	70	CINCINNATI	USA		30-33	9890	HJAP	75	BOGOTA	Colombia	
30-93	9700	CP25	25	LA PAZ	Bolivia		30-26	9915	GRU	50	LONDON	England	
30-93	9700	FNRI	1.5	FORT DE FRANCE	Martinique		30-23	9925	XDY	—	CHAPULTEPEC	Mexico	
30-93	9700	WOOW	50	NEW YORK	USA		30-21	9930	HJAQ	—	CARTAGENA	Colombia	
30-93	9700	KZMB	—	MANILA	Philippines		30-2	9935	SVM	7.5	ATHENS	Greece	
30-91	9705	ZQP	1.5	LUSAKA	N. Rhodesia		30-2	9935	—	—	BARRANQUILLA	Venezuela	
30-9	9710	—	—	MOSCOW	USSR		30-18	9940	—	—	MEXICO CITY	Mexico	
30-88	9715	CR7BE	7.5	LOURENÇO	USSR		30-16	9945	HNF	5	BAGHDAD	Iraq	
				MARQUES	Mozambique		30-12	9960	HCJB	1	QUITO	Ecuador	
30-86	9720	PRL7	50	RIO DE JANEIRO	Brazil		30-05	9985	FZI	5	BRAZZAVILLE	F. E. Africa	
30-86	9720	—	—	MOSCOW	USSR		30	10000	WVV	9	WASHINGTON, D.C.	USA	
30-86	9720	CS2MF	12	BARCARENE	Portugal		29-83	10055	SUV	10	CAIRO	Egypt	
30-83	9730	CE970	5	VALPARAISO	Chile		29-82	10060	PLY	1	BANDOENG	Java	
30-83	9730	HI2T	5	TRUJILLO	Dominican R.		29-76	10080	YVKC	—	CARACAS	Venezuela	

SHORT WAVE STATIONS OF THE WORLD (continued)

Wave Length	Frequency in Kc/s	Call Sign	Power KW/s	Station Name	Country	Log	Wave Length	Frequency in Kc/s	Call Sign	Power KW/s	Station Name	Country	Log
29-7	10100	WDF2	—	SAN JUAN	Porto Rico		25-87	11595	VRR4	.5	STONEY HILL	Jamaica	
29-68	10105	DTSP	—	BERLIN	Germany		25-81	11615	—	—	TEHERAN	Iran	
29-64	10120	XBHX	—	MEXICO CITY	Mexico		25-8	11630	—	—	LENINGRAD	USSR	
29-6	10135	HH3W	.5	PORT-AU-PRINCE	Haiti		25-76	11645	OTC3	50	LEOPOLDVILLE	B. Congo	
29-5	10170	—	—	HANOI	F. Indo-China		25-75	11650	XTPA	—	CANTON	China	
29-48	10175	SUR2	10	CAIRO	Egypt		25-71	11670	HJCT	1	BOGOTA	Colombia	
29-4	10205	—	—	MOSCOW	USSR		25-68	11680	PPQ	—	RIO DE JANEIRO	Brazil	
29-35	10220	PSH	15	RIO DE JANEIRO	Brazil		25-68	11680	GRG	50	LONDON	England	
29-24	10260	XRRA	10	PEIPING	China		25-67	11685	HVJ	25	VATICAN CITY	Vatican State	
29-24	10260	PMN	.5	BANDOENG	Java		25-66	11690	XORA	5	SHANGHAI	China	
29-2	10275	—	—	MENADO	Celebes		25-66	11690	—	—	BUCHAREST	Rumania	
29-04	10330	LPC	—	USUHAIA	Argentina		25-65	11695	HP5A	2	PANAMA CITY	Panama	
28-99	10350	LQA5	10	BUENOS AIRES	Argentina		25-64	11700	GVW	50	LONDON	England	
28-94	10365	PLS	3	BATAVIA	Java		25-64	11700	—	100	ALLOUIS	France	
28-85	10400	YSP	—	SAN SALVADOR	El Salvador		25-64	11700	CEI170	5	VALPARAISO	Chilo	
28-47	10535	—	—	TAL-PAI	Formosa		25-63	11705	SBP	12	MOTALA	Sweden	
28-3	10600	ZIK2	.2	BELIZE	B. Honduras		25-63	11705	CPFY	7-5	MONTREAL	Canada	
28-29	10605	VPO3	—	BRIDGETOWN	Barbados		25-63	11705	CKXA	50	SACKVILLE	Canada	
28-26	10615	FJQA	—	TANANARIVE	Madagascar		25-63	11705	WLWSI	75	CINCINNATI, OHIO	USA	
27-96	10730	VQ7LO	1-5	NAIROBI	Kenya		25-62	11710	VLG3	10	MELBOURNE	Australia	
27-83	10780	SDB2	12	MOTALA	Sweden		25-62	11710	WLWRI	175	CINCINNATI, OHIO	USA	
27-4	10950	PTH	25	PARIS	France		25-62	11710	—	—	MOSCOW	USSR	
27-35	10970	PZR	.75	PARAMARIBO	Surinam		25-62	11710	—	5	JOHANNESBURG	S. Africa	
27-27	11000	YHN	2-5	JOKJAKARTA	Java		25-62	11710	FHE3	12	DAKAR	F. W. Africa	
27-21	11025	CS2MK	10	LISBON	Portugal		25-61	11715	HEI5	25	BERNE	Switzerland	
27-2	11030	YDH2	—	SAMARANG	Java		25-6	11720	OTM4	20	LEOPOLDVILLE	B. Congo	
27-19	11035	CR6RA	.4	LOANDA	Angola		25-6	11720	PRL8	50	RIO DE JANEIRO	Brazil	
27-06	11085	—	.35	MACASSAR	Celebes		25-6	11720	CRKX	2	WINNIPEG	Canada	
27-06	11085	—	.25	SOERABAIA	Java		25-6	11720	CHOL	50	SACKVILLE	Canada	
27-05	11090	CS9MB	1	PONTA DELGUDA	Azores		25-6	11720	—	100	PARIS	France	
26-22	11440	PLO	2-5	BATAVIA	Java		25-6	11720	CPFL	5	MONTREAL	Canada	
26-11	11490	XLRA	1	HANKOW	China		25-6	11720	ZJM7	7-5	LIMASOL	Cyprus	
26-09	11500	ZMB3	—	APIA	Samoa		25-58	11730	OQ2AA	.15	LEOPOLDVILLE	B. Congo	

SHORT WAVE STATIONS OF THE WORLD (continued)

Wave Length	Freq- uency in Kc/s	Call Sign	Power KW/s	Station Name	Country	Log	Wave Length	Freq- uency in Kc/s	Call Sign	Power KW/s	Station Name	Country	Log
25-58	11730	KGEX	100	SAN FRANCISCO	USA		25-49	11770	GVU	50	LONDON	England	
25-58	11730	WRUL	50	BOSTON	USA		25-49	11770	KNBI	50	DIXON, CALIF.	USA	
25-58	11730	WRUW	20	BOSTON	USA		25-49	11770	WGEA	100	SCHENECTADY	USA	
25-58	11730	PHI	5	HILVERSUM	Holland		25-49	11770	OTC	—	LEOPOLDVILLE	B. Congo	
25-58	11730	—	100	PARIS	France		25-47	11780	HPSG	1.5	PANAMA CITY	Panama	
25-58	11730	GVV	50	LONDON	England		25-47	11780	—	—	MOSCOW	USSR	
25-58	11730	CR6RC	-2	LOANDA	Angola		25-47	11780	—	—	LUXEMBOURG	Luxembourg	
25-58	11730	—	7.5	SINGAPORE	Malaya		25-47	11780	XENN	.5	MEXICO CITY	Mexico	
25-58	11730	CEI173	2.5	SANTIAGO	Chile		25-47	11780	—	10	SAIGON	F. Indo-China	
25-55	11740	LKQ	10	FREDERIKSTAD	Norway		25-47	11780	ZL3	10	WELLINGTON	N. Zealand	
25-55	11740	VLB10	100	SHEPPARTON	Australia		25-46	11785	—	-25	VIENNA	Austria	
25-55	11740	—	—	MOSCOW	USSR		25-45	11790	KNBI	50	DIXON, CALIF.	USA	
25-55	11740	CEI174	6	SANTIAGO	Chile		25-45	11790	WLWO	75	CINCINNATI, OHIO	USA	
25-55	11740	HVJ	25	VATICAN CITY	Vatican State		25-45	11790	WRUA	50	BOSTON, MASS.	USA	
25-55	11740	WRUX	50	BOSTON	USA		25-43	11800	GWH	50	LONDON	England	
25-55	11740	VLB10	100	ATHLONE	Australia		25-41	11810	—	—	MILAN	Italy	
25-55	11740	—	2.5	HAVANA	Eire		25-41	11810	WGEA	50	SCHENECTADY	USA	
25-55	11740	COCY	5	MOSCOW	Cuba		25-41	11810	KCBF	50	DELANO, CALIF.	USA	
25-53	11750	—	—	LONDON	USSR		25-41	11810	VLG7	50	SHEPPARTON	Australia	
25-53	11750	GSD	50	KOMSOMOLSK	England		25-41	11810	HC2FW	1.5	GUAYAQUIL	Ecuador	
25-52	11755	—	50	MINSK	USSR		25-4	11815	HEUS	25	BERNE	Switzerland	
25-52	11755	—	—	BOGOTA	USSR		25-38	11820	GSN	50	LONDON	England	
25-51	11760	HJCAB	2.5	MELBOURNE	Colombia		25-38	11820	—	1.5	BENGHAZI	N. Africa	
25-51	11760	CKRA	10.	SACKVILLE	Canada		25-38	11820	XEBR	1.5	HERMOSILLO	Mexico	
25-51	11760	VLB3	50	MELBOURNE	Australia		25-36	11830	WCDA	50	NEW YORK	USA	
25-51	11760	VUD11	20	DELHI	India		25-36	11830	WCRC	50	WAYNE	USA	
25-51	11760	CBFA	10	MONTREAL	Canada		25-36	11830	VLW3	5	PERTH	Australia	
25-51	11760	OLR4B	25	PRAGUE	Czechoslovakia		25-35	11835	XGOA	—	NANKING	China	
25-5	11765	HC2VP	-25	GUAYAQUIL	Ecuador		25-35	11835	—	—	LOURENÇO		
25-5	11765	ZYB8	20	SÃO PAULO	Brazil						MARQUES	Mozambique	
25-5	11765	YDE	3	BATAVIA	Java		25-35	11835	CXA19	7.5	MONTEVIDEO	Uruguay	
25-49	11770	VLA4	100	SHEPPARTON	Australia		25-35	11835	—	12	ALGIERS	Algeria	
							25-34	11840	VLC7	50	SHEPPARTON	Australia	

SHORT WAVE STATIONS OF THE WORLD (continued)

Wave Length	Frequency In Kc/s	Call Sign	Power KW/s	Station Name	Country	Log	Wave Length	Frequency In Kc/s	Call Sign	Power KW/s	Station Name	Country	Log
25-34	11840	VLG4	10	MELBOURNE	Australia		25-21	11900	—	—	MOSCOW	USSR	
25-34	11840	KZFM	7.5	MANILA	Philippines		25-21	11900	CE1190	1	VALPARAISO	Chile	
25-34	11840	OLR4A	25	PRAGUE	Czechoslovakia		25-21	11900	HI2T	—	TRUJILLO	Dominican R.	
25-34	11840	GWQ	50	LONDON	England		25-21	11900	VLG9	10	LYNDHURST	Australia	
25-33	11845	—	25	PARIS	France		25-21	11900	CKEX	50	SACKVILLE	Canada	
25-32	11850	CE1185	3.5	SANTIAGO	Chile		25-21	11900	OLR4D	30	PRAGUE	Czechoslovakia	
25-32	11850	VUD3	5	DELHI	India		25-21	11900	—	-15	BUCHAREST	Rumania	
25-32	11850	ZPA3	1-25	ASUNCIÓN	Paraguay		25-19	11910	XGOY	30	CHUNGKING	China	
25-32	11850	LLK	15	FREDERIKSTAD	Norway		25-19	11910	SUW	10	CAIRO	Egypt	
25-32	11850	HJCF	2.5	BOGOTA	Colombia		25-15	11930	GVX	50	LONDON	England	
25-30	11860	GSE	50	LONDON	England		25-1	11950	ZPA5	2.5	ENCARNACION	Paraguay	
25-29	11865	HER5	25	BERNE	Switzerland		25-1	11950	—	—	MOSCOW	USSR	
25-27	11870	—	80	MUNICH	Germany		25-09	11955	GVY	50	LONDON	England	
25-27	11870	VUD9	7.5	DELHI	India		25-08	11960	—	—	MOSCOW	USSR	
25-27	11870	—	100	PARIS	France		25-08	11960	—	-5	TABRIZ	Iran	
25-27	11870	VLC3	25	SHEPPARTON	Australia		25-06	11970	—	—	BRAZZAVILLE	F. E. Africa	
25-27	11870	WNRA	50	NEW YORK	USA		25-06	11970	LR52	—	BUENOS AIRES	Argentina	
25-26	11875	OLR4C	25	PRAGUE	Czechoslovakia		25	12000	CB1180	7.5	SANTIAGO	Chile	
25-26	11875	—	—	MOSCOW	USSR		25	12000	—	-75	DAMASCUS	Syria	
25-25	11880	LRY1	—	BUENOS AIRES	Argentina		25	12000	—	—	MALANG	Java	
25-25	11880	VLH4	10	MELBOURNE	Australia		24-96	12020	OAX4Q	1	LIMA	Peru	
25-25	11880	XEHH	25	MEXICO CITY	Mexico		24-96	12020	—	—	MOSCOW	USSR	
25-25	11880	VLG5	10	LYNDHURST	Australia		24-95	12025	CR6RS	—	BENGUELA	Angola	
25-25	11880	LRT	10	CORDOBA	Argentina		24-92	12040	GRV	50	LONDON	England	
25-24	11885	—	25	PARIS	France		24-9	12050	VRR5	-5	STONEY HILL	Jamaica	
25-24	11885	—	—	KOMSOMLSK	USSR		24-88	12060	—	—	MOSCOW	USSR	
25-23	11890	—	—	MOSCOW	USSR		24-8	12095	GRF	50	LONDON	England	
25-23	11890	KWIX	—	SAN FRANCISCO	USA		24-77	12110	ZKG4	—	PITCAIRN	Pitcairn Isle	
25-23	11890	—	50	MANILA	Philippines		24-74	12125	FIQA	5	TANANARIVE	Madagascar	
25-21	11900	OQ2AB	15	ELIZABETHVILLE	B. Congo		24-73	12130	TPZ	—	ALGIERS	Algeria	
25-21	11900	—	—	HANOI	F. Indo-China		24-64	12175	TFJ	7.5	REYKJAVIK	Iceland	
25-21	11900	CXA10	20	MONTEVIDEO	Uruguay		24-6	12195	SVP	—	ATHENS	Greece	
25-21	11900	KWID	100	SAN FRANCISCO	USA		24-57	12210	—	—	VIENNA	Austria	

SHORT WAVE STATIONS OF THE WORLD (continued)

Wave Length	Fre- quency in Kc/s	Call Sign	Power KW/s	Station Name	Country	Log	Wave Length	Fre- quency in Kc/s	Call Sign	Power KW/s	Station Name	Country	Log
24-55	12220	XMPA	1.5	NANKING	China		20-63	14545	HIZT	.5	TRUJILLO	Dominican R.	
24-48	12255	WXFK	—	ADAK	Aloutian Isles		20-62	14550	YHP	—	SOERKARTA	Java	
24-45	12270	CEI227	5	PUNTARENAS	Chile		20-6	14560	HVJ	10	VATICAN CITY	Vatican State	
24-2	12395	—	—	BAKU	—		20-42	14690	PSP	15	RIO DE JANEIRO	Brazil	
24-15	12420	—	—	BUKIT TINGGI	Sumatra		20-41	14700	—	—	TEL AVIV	Israel	
24-1	12450	ZKG	—	PITCAIRN	Pitcairn Isle		20-36	14735	IQD	—	ROME	Italy	
24-09	12455	HCJB	10	QUITO	Ecuador		20-23	14830	OQ2AB	.25	ELIZABETHVILLE	B. Congo	
24-09	12455	GKU3	—	GREENWICH	England		20-22	14835	—	—	MOSCOW	USSR	
24	12500	IISP	—	ROME	Italy		20-21	14845	OC2D	—	LIMA	Peru	
23-53	12750	CS2MP	.5	LISBON	Portugal		20-2	14850	LPAB	—	RIO GRANDE	Argentina	
23-31	12870	CS2WI	7.5	PEREDE	Portugal		20-19	14855	—	—	USHUAIA	Argentina	
22-64	13250	ICA	—	ALGIERS	Algeria		20	15000	WWV	9	WASHINGTON, D.C.	USA	
22-62	13260	VPO2	—	BARBADOS	B. W. Indies		19-98	15015	VP52	.25	VALETTA	Malta	
22-52	13320	—	.3	KHARTOUM	Sudan		19-94	15045	—	—	MOSCOW	USSR	
22-51	13330	XLDA	—	CHUNGKING	China		19-94	15050	ZLR5	—	WELLINGTON	N. Zealand	
22-51	13335	—	.25	OMDURMAN	Sudan		19-93	15055	ETA	—	ADDIS ABABA	Ethiopia	
22-46	13360	—	.25	AMBON	Moluccas		19-91	15070	GWG	50	LONDON	England	
22-39	13400	—	—	MOSCOW	USSR		19-89	15085	ZJA6	2	GEORGETOWN	B. Guiana	
22-06	13600	PMS4	.25	SOERABAIA	Java		19-89	15085	—	—	MOSCOW	USSR	
21-99	13640	SVQ	7.5	ATHENS	Greece		19-88	15090	CBLX	7.5	MONTREAL	Canada	
21-95	13670	SVR	7.5	ATHENS	Greece		19-88	15090	CKLX	50	SACKVILLE	Canada	
21-88	13710	FFE	12	PARIS	France		19-87	15095	HVJ	17.5	VATICAN CITY	Vatican State	
21-87	13720	KLL	—	BOLINAS, CALIF.	USA		19-87	15100	EPB	15	TEHERAN	Iran	
21-85	13730	SVS	7.5	ATHENS	Greece		19-87	15100	—	100	PARIS	France	
21-79	13770	FSE	—	PARIS	France		19-87	15100	CS2MQ	10	BARCARENE	Portugal	
21-7	13825	SUZ	12	CAIRO	Egypt		19-86	15105	DTSP	—	BERLIN	Germany	
21-62	13875	—	—	TIFLIS	USSR		19-85	15110	GWG	50	LONDON	England	
21-61	13880	SUP3	5	CAIRO	Egypt		19-85	15110	—	—	PETROPAVLOVSK	USSR	
21-01	14280	EA9AA	1	TANGIER	N. Africa		19-85	15115	HCJB	1	QUITO	Ecuador	
20-8	14425	SVR	7.5	ATHENS	Greece		19-84	15120	HED7	25	BERNE	Switzerland	
20-75	14460	—	—	BERLIN	Germany		19-84	15120	HVJ2	25	VATICAN CITY	Vatican State	
20-69	14500	XEXA	—	MEXICO CITY	Mexico		19-84	15120	—	2.5	ATHLONE	Eire	
20-65	14530	XDA	2.5	CHAPULTEPEC	Mexico		19-84	15120	—	100	COLOMBO	Ceylon	

SHORT WAVE STATIONS OF THE WORLD (continued)

Wave Length	Fre- quency in Kc/s	Call Sign	Power KW/s	Station Name	Country	Log	Wave Length	Fre- quency in Kc/s	Call Sign	Power KW/s	Station Name	Country	Log
19-84	15120	—	100	PARIS	France		19-75	15190	CKCX	50	SACKVILLE	Canada	
19-84	15120	—	50	MILAN	Italy		19-75	15190	OIX4	15	HELSINKI	Finland	
19-82	15130	VUD11	20	DELHI	India		19-75	15190	VUD5	100	DELHI	India	
19-82	15130	KCBR	100	DELANO, CALIF.	USA		19-75	15190	PRK7	10	BELLO HORIZONTE	Brazil	
19-82	15130	WOOC	50	NEW YORK	USA		19-75	15190	CBFZ	7-5	MONTREAL	Canada	
19-82	15130	CP8	1-5	LA PAZ	Bolivia		19-74	15195	TAQ	20	ANKARA	Turkey	
19-82	15130	—	100	PARIS	France		19-73	15200	VLA6	100	SHEPPARTON	Australia	
19-81	15140	G5F	50	LONDON	England		19-73	15200	WRUA	50	BOSTON	USA	
19-81	15140	JLW6	—	TOKIO	Japan		19-73	15200	VLG11	10	LYNDHURST	Australia	
19-81	15145	—	—	MOSCOW	USSR		19-72	15210	WBOS	50	BOSTON	USA	
19-81	15145	ZYK3	12	RECIFE	Brazil		19-72	15210	PLFI	—	BANDOENG	Java	
19-81	15145	YDC	2-5	BATAVIA	Java		19-72	15210	VLC11	50	SHEPPARTON	Australia	
19-8	15150	KCBA	—	DELANO, CALIF.	USA		19-72	15210	KGEX	100	SAN FRANCISCO	USA	
19-8	15150	—	80	MUNICH	Germany		19-71	15220	PCJ	30	HILVERSUM	Holland	
19-8	15150	OAX4R	10	LIMA	Peru		19-7	15225	XG5Q	—	NANKING	China	
19-8	15150	ZYB9	12	SAO PAULO	Brazil		19-7	15225	JVW	20	KAWACHI	Japan	
19-8	15150	SBT	12	MOTALA	Sweden		19-7	15230	—	—	MOSCOW	USSR	
19-8	15150	WRCA	50	NEW YORK	USA		19-7	15230	—	—	KOMSOMOLSK	USSR	
19-79	15160	XEWW	10	MEXICO CITY	Mexico		19-7	15230	—	—	COLOMBO	Ceylon	
19-79	15160	JVC	40	NAZAKI	Japan		19-7	15230	CR7BD	3	LOURENÇO		
19-79	15160	VUD7	100	DELHI	India						MARQUES	Mozambique	
19-79	15160	VLB11	100	SHEPPARTON	Australia		19-7	15230	OLR5A	30	PRAGUE	Czechoslovakia	
19-79	15160	OLR5C	30	PRAGUE	Czechoslovakia		19-7	15230	VLG6	10	MELBOURNE	Australia	
19-79	15160	VLG7	15	LYNDHURST	Australia		19-7	15230	WLWL	75	CINCINNATI	USA	
19-78	15165	PRE9	5	FORTALEZA	Brazil		19-69	15235	JVW4	—	TOKIO	Japan	
19-78	15165	OZH2	6	COPENHAGEN	Denmark		19-68	15240	VLG6	10	MELBOURNE	Australia	
19-77	15170	LKV	5	OSLO	Norway		19-68	15240	—	100	PARIS	France	
19-77	15170	TGWA	10	GUATEMALA CITY	Guatemala		19-67	15250	WLWR	175	CINCINNATI	USA	
19-77	15170	XGOY	—	CHUNGKING	China		19-67	15250	WLWK	50	CINCINNATI	USA	
19-77	15170	—	—	MOSCOW	USSR		19-67	15250	KNBX	100	DIXON, CALIF.	USA	
19-77	15170	OQ2AA	5	LEOPOLDVILLE	B. Congo		19-67	15250	KRHO	100	HONOLULU	Hawaii	
19-77	15175	LLM	10	FREDRIKSTAD	Norway		19-67	15250	XGRY	25	NANKING	China	
19-76	15180	G5O	—	LONDON	England		19-66	15260	GSI	50	LONDON	England	

SHORT WAVE STATIONS OF THE WORLD (continued)

Wave Length	Frequency in Kc/s	Call Sign	Power KW/s	Station Name	Country	Log	Wave Length	Frequency in Kc/s	Call Sign	Power KW/s	Station Name	Country	Log
19-65	15270	WCRC	50	NEW YORK	USA		19-54	15350	WLWO	75	CINCINNATI, OHIO	USA	
19-65	15270	WCBN	50	NEW YORK	USA		19-54	15350	WRUS	50	BOSTON, MASS.	USA	
19-65	15270	—	—	SVERDLOVSK	USSR		19-54	15350	VUD8	7-5	DELHI	India	
19-63	15280	ZL4	10	WELLINGTON	N. Zealand		19-54	15355	—	5	JUNGLINSTER	Luxembourg	
19-63	15280	WNRE	50	NEW YORK	USA		19-53	15360	—	—	MOSCOW	USSR	
19-63	15280	—	—	BRUSSELS	Belgium		19-53	15370	—	—	BUDAPEST	Hungary	
19-62	15290	VUD11	20	DELHI	India		19-52	15370	ZYC9	25	RIO DE JANEIRO	Brazil	
19-62	15290	WRUL	50	BOSTON, MASS.	USA		19-51	15375	GRE	50	LONDON	England	
19-62	15290	LRU	5	BUENOS AIRES	Argentina		19-5	15380	—	—	MOSCOW	USSR	
19-62	15290	KWID	50	SAN FRANCISCO	USA		19-48	15400	ZMB4	—	APIA	Samoa	
19-61	15300	GWR	50	LONDON	England		19-47	15405	PZC	2	PARAMARIBA	Surinam	
19-61	15300	—	25	PARIS	France		19-47	15410	—	—	MOSCOW	USSR	
19-61	15300	—	7-5	SINGAPORE	Malaya		19-45	15420	GWD	50	LONDON	England	
19-61	15300	CXA18	25	MONTEVIDEO	Uruguay		19-45	15425	VRR11	5	STONEY HILL	Jamaica	
19-6	15305	HER6	25	BERNE	Switzerland		19-44	15435	GWE	50	LONDON	England	
19-59	15310	GSP	50	LONDON	England		19-43	15440	—	—	MOSCOW	USSR	
19-59	15310	—	—	NOVOSIBIRSK	USSR		19-42	15450	GRD	50	LONDON	England	
19-58	15320	VLA5	100	SHEPPARTON	Australia		19-37	15490	—	—	SOERABAIA	Java	
19-58	15320	VLC4	50	SHEPPARTON	Australia		19-34	15515	HDR	2	QUITO	Ecuador	
19-58	15320	CKCS	50	SACKVILLE	Canada		19-24	15595	FZ1	50	BRAZZAVILLE	F. E. Africa	
19-58	15320	DAKV	—	BERLIN	Germany		18-91	15860	DHTB2	—	FRANKFURT	Germany	
19-58	15320	OZH2	6	COPENHAGEN	Denmark		18-91	15860	JVD	—	TOKIO	Japan	
19-58	15320	OLR5B	30	PRAGUE	Czechoslovakia		18-89	15880	FTK	25	PARIS	France	
19-57	15325	OQ2RC	25	LEOPOLDVILLE	B. Congo		18-87	15900	CR6RL	1	LOANDA	Angola	
19-57	15325	JWV3	20	KAWACHI	Japan		18-8	15960	CUJ2	—	LISBON	Portugal	
19-57	15325	HEU7	25	BERNE	Switzerland		18-67	16070	WXFD	—	ADAK	Aleutian Is.	
19-57	15330	KCBA	50	DELANO, CALIF.	USA		18-62	16110	SUV2	7-5	CAIRO	Egypt	
19-57	15330	KNBX	100	DIXON, CALIF.	USA		18-38	16325	QOM3	1-5	BISSAO	P. Guinea	
19-57	15330	WGEO	100	SCHENECTADY	USA		18-32	16375	SUX2	—	CAIRO	Egypt	
19-56	15340	—	—	MOSCOW	USSR		18	16665	CNR3	2-5	RABAT	Morocco	
19-55	15345	—	10	ATHENS	Greece		17-93	16735	SUX3	12	CAIRO	Egypt	
19-54	15350	—	25	PARIS	France		17-2	17450	HVJ	25	VATICAN CITY	Vatican State	
19-54	15350	XGOA	10	NANKING	China		17-16	17480	VWW3	—	KIRKEE	India	

SHORT WAVE STATIONS OF THE WORLD (continued)

Wave Length	Frequency in Kc/s	Call Sign	Power KW/s	Station Name	Country	Log	Wave Length	Frequency in Kc/s	Call Sign	Power KW/s	Station Name	Country	Log
17-02	17630	PMW	2.5	BATAVIA	Java		16-84	17810	—	100	PARIS	France	
16-98	17665	—	—	PARIS	France		16-83	17820	CKNC	50	SACKVILLE	Canada	
16-97	17675	—	—	MOSCOW	USSR		16-83	17820	—	—	SINGAPORE	Malaya	
16-96	17685	GEU2	—	GREENWICH	England		16-83	17820	—	—	COLOMBO	Ceylon	
16-95	17700	GVP	50	LONDON	England		16-83	17825	LLN	5	FREDRIKSTAD	Norway	
16-94	17715	GRA	50	LONDON	England		16-82	17830	OLR6A	30	PRAGUE	Czechoslovakia	
16-93	17720	LRA5	5	BUENOS AIRES	Argentina		16-82	17830	VUD10	20	DELHI	India	
16-92	17730	GVQ	50	LONDON	England		16-82	17830	WCBX	50	NEW YORK	USA	
16-91	17735	ZOJ	5	COLOMBO	Ceylon		16-82	17835	JVU3	40	YAMATA	Japan	
16-91	17740	—	—	MOSCOW	USSR		16-81	17840	—	40	KIEV	USSR	
16-9	17750	OZI	7.5	COPENHAGEN	Denmark		16-81	17840	VLC9	50	SHEPPARTON	Australia	
16-9	17750	WRUW	20	BOSTON	USA		16-81	17840	—	5	BRUSSELS	Belgium	
16-9	17750	—	—	MOSCOW	USSR		16-81	17840	—	1.5	ATHLONE	Eire	
16-9	17755	ZBW5	2.5	HONG KONG	China		16-81	17840	JAG	—	OSAKA	Japan	
16-89	17760	VUD3	5	DELHI	India		16-81	17840	FZI	7.5	BRAZZAVILLE	F. E. Africa	
16-89	17760	KWIX	50	SAN FRANCISCO	USA		16-81	17840	HVJ	25	VATICAN CITY	Vatican State	
16-89	17765	—	100	PARIS	France		16-8	17850	PRL9	50	RIO DE JANEIRO	Brazil	
16-89	17765	XGRZ	5	NANKING	China		16-8	17850	—	100	PARIS	France	
16-88	17770	ZOJ	7.5	COLOMBO	Ceylon		16-8	17850	KCBF	50	DELANO, CALIF.	USA	
16-88	17770	—	—	MOSCOW	USSR		16-8	17860	—	—	MOSCOW	USSR	
16-88	17770	PHI	7.5	HILVERSUM	Holland		16-78	17880	KGEX	100	SAN FRANCISCO	USA	
16-88	17770	ZL5	10	WELLINGTON	New Zealand		16-78	17880	WGEX	—	SCHENECTADY	USA	
16-87	17780	WNBI	50	NEW YORK	USA		16-76	17895	HCJB	5	QUITO	Ecuador	
16-87	17785	HER7	25	BERNE	Switzerland		16-69	17970	ZNX	—	ST. GEORGES	Bermuda	
16-87	17785	LKX	5	OSLO	Norway		16-68	17980	KQZ	25	BOLINAS, CALIF.	USA	
16-86	17790	GSG	50	LONDON	England		16-64	18025	GRQ	50	LONDON	England	
16-85	17800	OIX5	1	HELSINKI	Finland		16-63	18035	ICJ	—	ROME	Italy	
16-85	17800	VLA7	100	SHEPPARTON	Australia		16-6	18070	PCV	—	KOOTWIJK	Holland	
16-85	17800	WLWK	50	CINCINNATI	USA		16-59	18080	GVO	50	LONDON	England	
16-85	17800	WLWO	50	CINCINNATI	USA		16-56	18115	LSD9	10	BUENOS AIRES	Argentina	
16-85	17800	KRHO	100	HONOLULU	Hawaii		16-55	18130	GRP	50	LONDON	England	
16-84	17810	LLP	7	OSLO	Norway		16-54	18135	PMC	2.5	BATAVIA	Java	
16-84	17810	GSV	50	LONDON	England		16-52	18160	WNRI	50	NEW YORK	USA	

SHORT WAVE STATIONS OF THE WORLD (continued)

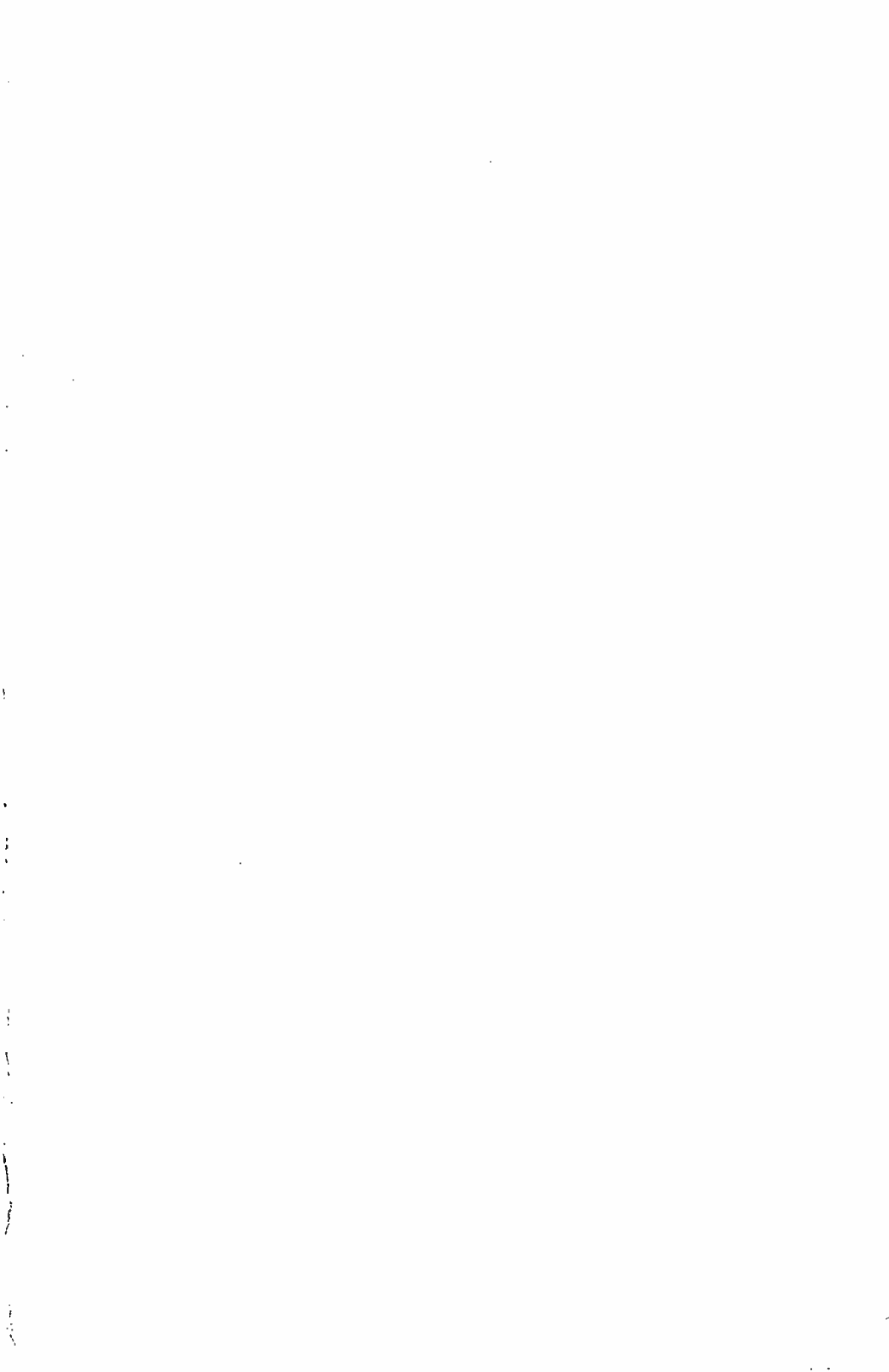
Wave Length	Freq- uency in Kc/s	Call Sign	Power KW/s	Station Name	Country	Log	Wave Length	Freq- uency in Kc/s	Call Sign	Power KW/s	Station Name	Country	Log
16-51	18175	—	—	MOSCOW	USSR		13-91	21565	OLR7B	25	PRAGUE	Czechoslovakia	
16-36	18335	—	—	PARIS	France		13-91	21570	WCRC	50	NEW YORK	USA	
16-35	18350	ZCB	1	TEL AVIV	Israel		13-89	21590	WGEA	50	SCHENECTADY	USA	
16-31	18390	FZ5	—	SAIGON	F. Indo-China		13-89	21600	VLA9	100	SHEPPARTON	Australia	
16-26	18450	HBF	20	GENEVA	Switzerland		13-88	21605	CKRP	50	SACKVILLE	Canada	
16-23	18490	HBH	20	GENEVA	Switzerland		13-88	21610	WNRA	50	NEW YORK	USA	
16-13	18600	PLA	2-5	BATAVIA	Java		13-86	21640	GRZ	50	LONDON	England	
16	18750	—	—	HONG KONG	China		13-86	21640	OLR7C	25	PRAGUE	Czechoslovakia	
15-88	18895	ZCA	1-5	TEL AVIV	Israel		13-85	21650	WLWS	75	CINCINNATI, OHIO	USA	
15-86	18910	JVA	—	TOKIO	Japan		13-84	21675	GVR	50	LONDON	England	
15-74	19055	—	—	BRIDGETOWN	Barbados		13-84	21680	VLC10	50	SHEPPARTON	Australia	
15-72	19030	GYBS	—	GREENWICH	England		13-84	21680	TGWA	10	GUATEMALA CITY	Guatemala	
15-52	19335	IFV	—	ROME	Italy		13-83	21690	WLWLI	75	CINCINNATI, OHIO	USA	
15-51	19345	PMA	2	BATAVIA	Java		13-82	21710	GVS	50	LONDON	England	
15-5	19360	FTM	25	PARIS	France		13-81	21720	—	—	SINGAPORE	Malaya	
15-46	19400	LQB5	1	BUENOS AIRES	Argentina		13-81	21730	WNRX	50	NEW YORK	USA	
15-42	19450	XGN5	—	SHANGHAI	China		13-8	21740	—	100	PARIS	France	
15-26	19660	SUS1	2-5	CAIRO	Egypt		13-79	21750	GVT	50	LONDON	England	
15-18	19765	SUP4	12	CAIRO	Egypt		12	25000	WWV	-1	WASHINGTON, D.C.	USA	
15	20000	WWV	-1	WASHINGTON, D.C.	USA		11-72	25600	WRUX	75	BOSTON, MASS.	USA	
14-89	20150	SUP3	2-5	CAIRO	Egypt		11-65	25750	GSQ	50	LONDON	England	
13-99	21450	OLR7A	30	PRAGUE	Czechoslovakia		11-63	25800	TFJ	2-5	REYKJAVIK	Iceland	
13-99	21450	—	5	BRUSSELS	Belgium		11-63	25800	ZL6	7-5	WELLINGTON	N. Zealand	
13-99	21450	XGSW	25	NANKING	China		11-49	26100	GSK	50	LONDON	England	
13-98	21460	KNBA	50	DIXON, CALIF.	USA		11-36	26400	GSR	50	LONDON	England	
13-97	21470	GSH	50	LONDON	England		11-3	26550	GSS	50	LONDON	England	
13-97	21480	PHI	5	HILVERSUM	Holland		10	30000	WWV	-1	WASHINGTON, D.C.	USA	
13-97	21490	—	100	PARIS	France		8-57	35000	WWV	-1	WASHINGTON, D.C.	USA	
13-96	21500	WOOW	50	NEW YORK	USA		7-28	41200	Freq. Mod.	—	COPENHAGEN	Denmark	
13-95	21510	VUD8	7-5	DELHI	India		7-23	41500	T-V Sound	—	LONDON	England	
13-94	21530	GSJ	50	LONDON	England		7-23	41510	T-V Sound	—	EINDHOVEN	Holland	
13-93	21540	VLB5	100	SHEPPARTON	Australia		7-21	41625	Freq. Mod.	—	STOCKHOLM	Sweden	
13-92	21550	GST	50	LONDON	England		7-14	42000	T-V Sound	5	PARIS	France	

SHORT WAVE STATIONS OF THE WORLD (continued)

Wave Length	Frequency in Kc/s	Call Sign	Power KW/s	Station Name	Country	Log	Wave Length	Frequency in Kc/s	Call Sign	Power KW/s	Station Name	Country	Log
7-06	42500	T-V Sound	—	BERLIN	Germany								
6-77	44320	T-V Vision	—	BERLIN	Germany								
6-67	45000	T-V Vision	—	LONDON	England								
6-67	45000	T-V Vision	—	EINDHOVEN	Holland								
6-52	46000	T-V Vision	30	PARIS	France								
5-31	56500	Freq. Mod.	-25	LYONS	France								
5-31	56500	Freq. Mod.	.25	PARIS	France								
5-15	58250	T-V Sound	—	BIRMINGHAM	England								
4-86	61750	T-V Vision	—	BIRMINGHAM	England								
4-34	69000	Freq. Mod.	.5	PARIS	France								
3-68	81500	M2GW	—	POLICE, LONDON	England								
3-32	90250	Freq. Mod.	—	LONDON	England								

Conversion Table

Centi- metres or Metres	Mega- cycles	Metres	Mega- cycles	Metres	Mega- cycles
1 cm	30,000	34	8.823	113	2.655
5 "	6,000	35	8.572	115	2.609
10 "	3,000	36	8.332	117	2.564
50 "	600	37	8.118	120	2.50
1 metre	300	38	7.894	122	2.459
2 metres	150	39	7.692	124	2.419
5 "	60	40	7.50	126	2.381
7 "	42.86	41	7.317	128	2.344
9 "	33.33	42	7.143	130	2.308
10 "	30.0	43	6.977	135	2.222
11 "	27.27	44	6.819	140	2.143
12 "	25.0	45	6.667	145	2.069
13 "	23.08	46	6.522	150	2.0
14 "	21.43	47	6.383	160	1.875
15 "	20.0	48	6.250	165	1.818
16 "	18.75	49	6.122	170	1.765
17 "	17.64	50	6.0	175	1.714
18 "	16.67	52	5.769	180	1.667
19 "	15.78	54	5.555	185	1.622
20 "	15.0	56	5.357	190	1.579
21 "	14.28	60	5.0	195	1.538
22 "	13.64	65	4.617	200	1.5
23 "	13.04	70	4.287		
24 "	12.50	75	4.0		
25 "	12.0	80	3.750		
26 "	11.54	85	3.530	Metres	Kilo- cycles
27 "	11.11	90	3.333		
28 "	10.71	95	3.153	210	1,429
29 "	10.35	100	3.0	220	1,364
30 "	10.0	103	2.913	230	1,304
31 "	9.678	106	2.830	240	1,250
32 "	9.375	109	2.752	250	1,200
33 "	9.090	111	2.703	260	1,154



BERNARDS RADIO BOOKS

FOR THE HOME & AMATEUR CONSTRUCTOR

4.	RADIO POCKET BOOK	1.
30.	RADIO VALVE MANUAL	3/6
37.	MANUAL OF DIRECT DISC RECORDING	2.
41.	WIRELESS AMPLIFIER MANUAL	2/6
42.	SHORTWAVE RADIO HANDBOOK	2/6
43.	MODERN RADIO TEST GEAR CONSTRUCTION	1/6
44.	RADIO SERVICE MANUAL	2/6
45.	RADIO REFERENCE HANDBOOK	12/6
48.	RADIO COIL AND TRANSFORMER MANUAL	2.
52.	RADIO TUNER UNIT MANUAL	2/6
53.	RADIO CONSTRUCTORS' MANUAL	3.
54.	RADIO RESISTOR CHART	1.
55.	HANDBOOK OF RADIO CIRCUITS No. 2	2/6
56.	RADIO AERIAL HANDBOOK	2/6
57.	ULTRA SHORTWAVE HANDBOOK	2/6
58.	RADIO HINTS MANUAL	2/6
59.	TELEVISION CONSTRUCTION MANUAL	3/6
60.	RADIO REPAIRS MANUAL	2/6
61.	AMATEUR TRANSMITTERS' CONSTRUCTION MANUAL... ..	2/6
62.	CAR AND PORTABLE RADIO CONSTRUCTORS' MANUAL	2/6
63.	RADIO CALCULATIONS MANUAL	3/6
64.	SOUND EQUIPMENT MANUAL	2/6
65.	RADIO DESIGNS MANUAL	2/6
66.	COMMUNICATIONS RECEIVERS' MANUAL	2/6
67.	RADIO VALVE EQUIVALENTS MANUAL	2/6
68.	FREQUENCY MODULATION RECEIVERS' MANUAL	2/6
69.	RADIO INDUCTANCE MANUAL	2/6
70.	LOUDSPEAKER MANUAL	2/6
71.	MODERN BATTERY RECEIVERS' MANUAL	2/6
72.	EXPERIMENTAL CIRCUITS MANUAL	2/6
73.	RADIO TEST EQUIPMENT MANUAL	2/6
74.	RADIO VALVE APPLICATIONS MANUAL	5.
76.	RADIO ANTI-INTERFERENCE MANUAL	2/6
77.	WALKIE-TALKIE CONSTRUCTION MANUAL	2/6
78.	RADIO AND TELEVISION LABORATORY MANUAL	2/6
79.	THE RADIO MODERNISATION MANUAL	3/6
81.	USING EX-SERVICE RADIO APPARATUS	2/6
82.	AC-DC RECEIVER CONSTRUCTION MANUAL... ..	2/6
83.	RADIO INSTRUMENTS AND THEIR CONSTRUCTION	2/6
84.	INTERNATIONAL WORLD RADIO STATION LIST	1/6

Other Titles in Publication

75.	INTERNATIONAL RADIO TUBE ENCYCLOPEDIA
80.	TELEVISION SERVICING MANUAL
85.	THE MINIATURE RADIO EQUIPMENT CONSTRUCTION MANUAL
86.	THE MIDGET RADIO CONSTRUCTION MANUAL
	RADIO VALVE SELECTION GUIDE