

November

1962

The
KMA GUIDE

Our cover picture this month was taken at the Teachout Turkey Farm located a few miles northwest of Shenandoah. The Teachouts have raised and processed "famous for flavor" turkeys for many years. This year their entire flock is made up of white birds. Our two cover girls are surrounded by a sea of fluttering white. The turkeys were so brilliant they dazzled your eyes in the sunshine like bright snow. This huge flock of two thousand birds completely surrounded Teresa and Julie, six and four year old daughters of Guide Editor, Duane Modrow. Teresa is holding one of the friendly, but hard to catch birds while Julie displays a feather she found on the ground among thousands drifting around in the breeze. If you dread the holidays, be thankful you aren't a turkey.

NOVEMBER, 1962

Vol. 8

No. 11

The KMA Guide is published the first of each month by the Tom Thumb Publishing Co., 205 North Elm St., Shenandoah, Iowa. Owen Saddler editorial chairman; Duane Modrow, editor; Doris Murphy, featured editor; Susan Eckley, copy editor. Subscription price \$1 per year (12 issues) in the United States, foreign countries, \$1.50 per year. Allow two week's notice for change of address and be sure to send old as well as new address.

CRAFT CARNIVAL - HUGE SUCCESS

An overwhelming number of ladies poured into Shenandoah Thursday, October 25th, for the annual Page County Craft Carnival. Primarily a county affair under sponsorship of the Page County Extension Family Living Service and the Page County Farm Bureau, sponsors were delighted to see visitors arrive from six states. A large group arrived from St. Joseph, Missouri. It is estimated four thousand women came to see a wide variety of exhibitors' handiwork. KMA Homemaker, Florence Falk

"The Farmer's Wife", co-chairman of the show this year, certainly proved a point she has long expounded, "Women are hungry to learn things they can do with their hands." Twenty-seven exhibitors spent a delightfully exhausting eight hours showing visitors how the many articles on display were made. Exhibits were set up on long lines of tables, with large backdrops also loaded with examples of household hand craft. Pictured below are Florence



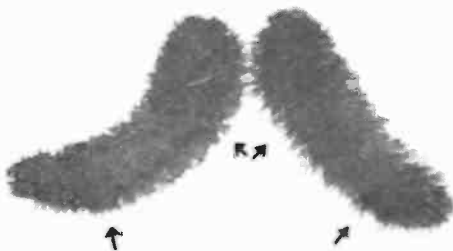
Nielson, left, wife of KMA Production Manager Warren Nielson, and "The Farmer's Wife". Mrs. Nielson was an exhibitor, and as you can see, had a large number of items on display. She is busily engaged explaining details of how to cover a waxed banana with sequins to a group of ladies just out of camera range on the left. The visitors were so engrossed in displays the lines moved very slowly past the tables. By mid-afternoon the main floor of the building was packed solid. However, by day's end everyone had a good look at the items which interested them most . . . and the exhibitors were ready to be carried home. Nevertheless, all were delighted with the huge turnout. Co-chairman of the show with Florence Falk was Mrs. Darrel Welch of Clarinda, Iowa.



A Chat With Edward May

One final word regarding the weather—this has to do with the “Woolly Bear” caterpillars. Guide photographer, Duane Modrow, found two “woolly bears”, photographed and caricatured them below. It's difficult to tell from the picture whether the brown band is wide or narrow, but Modrow says the band is a wide one. If this is true, this would indicate a mild winter as the wider the band the milder the winter. One thing is certain, winter is just about here and a great many people are hoping for a mild one.

Remember in a recent article in the Guide I spoke about trying to locate some old radio equipment for placing in the lobby of KMA for people to see, sort of a radio museum. We had our first response in a 1926 Neutrowound radio from Mr. and Mrs. Ed Dale of Gilman City, Missouri. We will take a picture of it and have it in the next issue of the Guide. We appreciate the fact that Mr. and Mrs. Dale were willing to donate the radio to what I think is a very worthy cause.



Arrows indicate width of band.

Things have certainly been busy at our house. Between Eddie's cub scout activities, plus Annette having a major part in the senior class play with dally play practices, and Karen being named the freshman attendant to the football homecoming queen, this past month has been a busy one. In addition, Annette is in the process of filling out college application blanks. This doesn't sound like it would be much of a job, but it is quite a decision for a person to decide just what college to apply for admission. Actually, they recommend a person make application to a minimum of two colleges and preferably three, because you might not be accepted at the college of your first choice. Virtually every college is filled quickly to capacity and the applicant sits on needles and pins for quite some time until he hears whether or not he is accepted.

I think most everyone is glad the election is over. The candidates hit the campaign trail early and their efforts extended over a long period of time. I hope your candidates won, but win, lose or draw, we always seem to stand behind the winner and hope he represents us well. It disturbs me that more people don't vote, but I don't know what a person can do to change people. We had an extensive campaign coverage election night on KMA and we always do this for all national elections.

Many people are giving thought to Christmas since it is a few short weeks away, but don't overlook Thanksgiving. This is one vacation which, in my opinion, hasn't received its fair share of recognition in recent years. We all have a great deal to be thankful for, and let's hope we can share our thanks by observing Thanksgiving vacation in its true spirit.

Our cover picture this month was taken at the Teachout Turkey Farm located a few miles northwest of Shenandoah. The Teachouts have raised and processed "famous for flavor" turkeys for many years. This year their entire flock is made up of white birds. Our two cover girls are surrounded by a sea of fluttering white. The turkeys were so brilliant they dazzled your eyes in the sunshine like bright snow. This huge flock of two thousand birds completely surrounded Teresa and Julie, six and four year old daughters of Guide Editor, Duane Modrow. Teresa is holding one of the friendly, but hard to catch birds while Julie displays a feather she found on the ground among thousands drifting around in the breeze. If you dread the holidays, be thankful you aren't a turkey.

NOVEMBER, 1962

Vol. 8

No. 11

The KMA Guide is published the first of each month by the Tom Thumb Publishing Co., 205 North Elm St., Shenandoah, Iowa. Owen Saddler editorial chairman; Duane Modrow, editor; Doris Murphy, featured editor; Susan Eckley, copy editor. Subscription price \$1 per year (12 issues) in the United States, foreign countries, \$1.50 per year. Allow two week's notice for change of address and be sure to send old as well as new address.

CRAFT CARNIVAL - HUGE SUCCESS

An overwhelming number of ladies poured into Shenandoah Thursday, October 25th, for the annual Page County Craft Carnival. Primarily a county affair under sponsorship of the Page County Extension Family Living Service and the Page County Farm Bureau, sponsors were delighted to see visitors arrive from six states. A large group arrived from St. Joseph, Missouri. It is estimated four thousand women came to see a wide variety of exhibitors' handiwork. KMA Homemaker, Florence Falk

"The Farmer's Wife", co-chairman of the show this year, certainly proved a point she has long expounded, "Women are hungry to learn things they can do with their hands." Twenty-seven exhibitors spent a delightfully exhausting eight hours showing visitors how the many articles on display were made. Exhibits were set up on long lines of tables, with large backdrops also loaded with examples of household hand craft. Pictured below are Florence



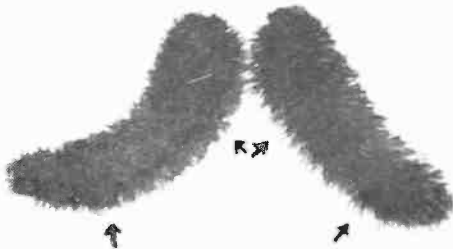
Nielson, left, wife of KMA Production Manager Warren Nielson, and "The Farmer's Wife". Mrs. Nielson was an exhibitor, and as you can see, had a large number of items on display. She is busily engaged explaining details of how to cover a waxed banana with sequins to a group of ladies just out of camera range on the left. The visitors were so engrossed in displays the lines moved very slowly past the tables. By mid-afternoon the main floor of the building was packed solid. However, by day's end everyone had a good look at the items which interested them most . . . and the exhibitors were ready to be carried home. Nevertheless, all were delighted with the huge turnout. Co-chairman of the show with Florence Falk was Mrs. Darrel Welch of Clarinda, Iowa.



A Chat With Edward May

One final word regarding the weather—this has to do with the "Woolly Bear" caterpillars. Guide photographer, Duane Modrow, found two "woolly bears", photographed and caricatured them below. It's difficult to tell from the picture whether the brown band is wide or narrow, but Modrow says the band is a wide one. If this is true, this would indicate a mild winter as the wider the band the milder the winter. One thing is certain, winter is just about here and a great many people are hoping for a mild one.

Remember in a recent article in the Guide I spoke about trying to locate some old radio equipment for placing in the lobby of KMA for people to see, sort of a radio museum. We had our first response in a 1926 Neutrowound radio from Mr. and Mrs. Ed Dale of Gilman City, Missouri. We will take a picture of it and have it in the next issue of the Guide. We appreciate the fact that Mr. and Mrs. Dale were willing to donate the radio to what I think is a very worthy cause.



Arrows indicate width of band.

Things have certainly been busy at our house. Between Eddie's cub scout activities, plus Annette having a major part in the senior class play with daily play practices, and Karen being named the freshman attendant to the football homecoming queen, this past month has been a busy one. In addition, Annette is in the process of filling out college application blanks. This doesn't sound like it would be much of a job, but it is quite a decision for a person to decide just what college to apply for admission. Actually, they recommend a person make application to a minimum of two colleges and preferably three, because you might not be accepted at the college of your first choice. Virtually every college is filled quickly to capacity and the applicant sits on needles and pins for quite some time until he hears whether or not he is accepted.

I think most everyone is glad the election is over. The candidates hit the campaign trail early and their efforts extended over a long period of time. I hope your candidates won, but win, lose or draw, we always seem to stand behind the winner and hope he represents us well. It disturbs me that more people don't vote, but I don't know what a person can do to change people. We had an extensive campaign coverage election night on KMA and we always do this for all national elections.

Many people are giving thought to Christmas since it is a few short weeks away, but don't overlook Thanksgiving. This is one vacation which, in my opinion, hasn't received its fair share of recognition in recent years. We all have a great deal to be thankful for, and let's hope we can share our thanks by observing Thanksgiving vacation in its true spirit.

Frank Comments

By FRANK FIELD

Last month I told you about seeding down the garden spot about the middle of September. I kept it well watered for the first three weeks and this picture shows the results. The grass seed came up to a perfect stand and this picture was taken on October 27 when I was mowing for the third time . . . naturally, it was Maypark Lawn Grass Mixture!

The garden next year will go on that level ground just beyond the orchard, pretty much to the right side of the picture. Sometime in the next three or four weeks, it will be fall plowed, rather deeply, and allowed to lay rough through the winter. Then, just as soon as it is dry enough to work next spring, I will put on a heavy application of regular Maytone Fertilizer before raking it and leveling it for planting.

The spot where the garden has been for the last few years has a decided slope to the southeast and the erosion has always been quite a problem. In order to hold the washing to a minimum, I have been planting on the contour with the rows running northeast and southwest; even so there has been quite a little washing. This, of course, will be completely eliminated in the garden spot next year as it will be almost level with just a gentle slope to the south — enough for good drainage.

Of course, this flat land will take much longer in the spring to dry out enough to

work but there will be enough space between the two rows of fruit trees in the orchard for the real early garden such as peas, radishes, beets, onion sets and onion plants. Then after their crops are harvested, I will probably work up the ground in the orchard and seed it down to Maypark Lawn Grass Mixture also.

The picture last month, as you remember, showed big piles of dirt across the center where the new street is going through. This month you will notice, those piles have all been leveled off so that the street level is about 5-6 feet higher. This was done in order to get the sewer line high enough so the houses on the upper side of the street could have floor drains in their basements and still drain into the sewer. The plan is for four houses to go in on the upper side of the street. This also means there can never be any houses built on the lower side because it would be impossible to get a sewer line to them, so apparently my garden spot is perfectly safe.

Our daughter Zo, seems to be about back to normal. Her friends and neighbors all say she looks better than she has for 20 years but just the same, it is rather disconcerting to be near her and hear that plastic valve clicking away. When you mention it, she grins and says the time to be worried about it would be when you didn't hear it! As long as it clicks, it is working perfectly. Just think, only a few years ago such open heart surgery was completely unheard of!

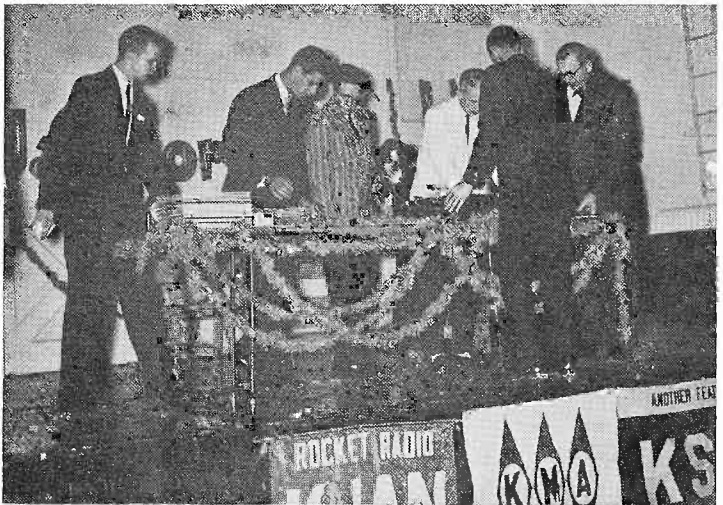
No, we haven't completed our fall bulb planting as yet as the Petunias have been so attractive that we hated to pull them up to make room for the bulbs, however, we hope to have it done before this time next month.



Twenty-seven smocked corduroy pillows in a rainbow of color present an interesting home economics class grading assignment for Joanne Andersen, wife of KMA Account Executive, Andy Andersen. Joanne is teaching 7th Grade Home Ec this year. Her students' colorful pillows were displayed in the J. C. Penney store window downtown.



Pictured at right is probably the biggest stageful of radio deejays ever seen in southwest Iowa. Six music men from four radio stations graciously lent their services to present a Deejay Jamboree during Shenandoah's Farm-Industry Day, September 29. They took turns spinning records and jokes. Although a cold rainy day dampened spirits, over 200 dancers arrived. L to R — Ron King, KFNF, Shenandoah; Jim Ross and Dale Elchor, KMA; Johnny Johnson, KSIB, Creston; Pat Connors, KFNF; and Bob Kelso, KJAN, Atlantic. The deejays, and the audience, really had a ball. They gave away stacks of single records and albums.



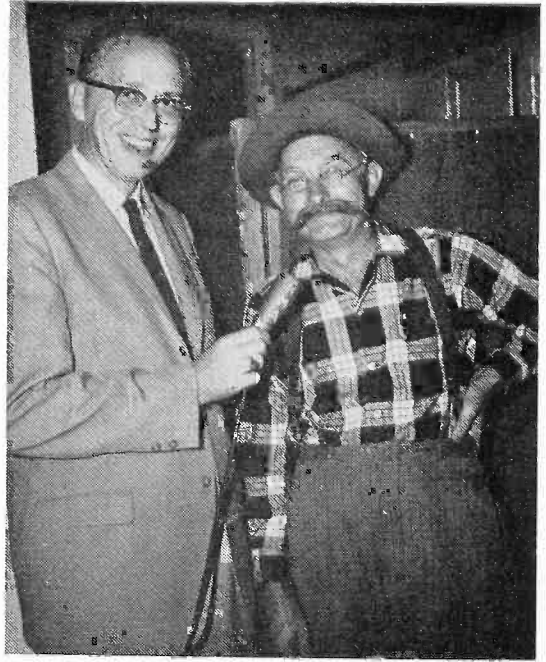
Noted columnist, author and reporter Bob Considine joined the ABC radio network October 1. "On the Line With Bob Considine" is heard Monday through Friday at 6:20 p.m. on KMA. The title of his show is based on the name of his syndicated column which first appeared in the New York Mirror in 1936. This new addition to the KMA supper hour powerhouse of newsmen and commentators brings another of the great news men of our day to KMA listeners. Considine has scored many exclusives. During his distinguished career, Bob has won numerous awards and citations. Among his books are "It's the Irish", "Thirty Seconds Over Tokyo", "The Babe Ruth Story", "The Men Who Robbed Brinks", "Red Plot Against America", "Innocents At Home" plus many more. The Considines reside in New York City and Allenhurst, N. J. They have four children, Mike 25, Barry 19, Dennis 17, and Deborah 13. Bob is a sports enthusiast, particularly tennis, in which he excelled in the early '30's. Join "On the Line with Bob Considine" every evening on KMA.



Country Music Stars Smash All Previous Records

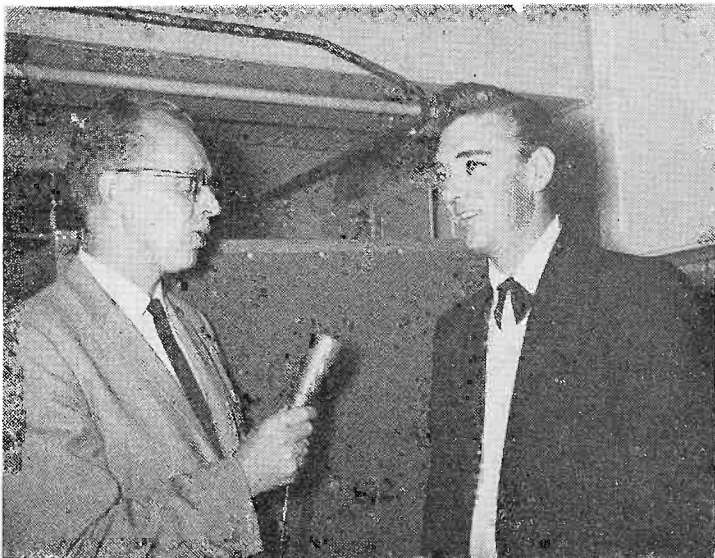
Fans turned out in record droves for two big performances of Grand Ole Opry with Carl Smith, Grandpa Jones, Hawkshaw Hawkins, and Jean Shepard headlining the group Thursday night, September 27, in Shenandoah. Both performances filled nearly every available seat for an all-time attendance high. Enthusiastic foot stompin' to fancy fiddlin' almost **literally** brought down the house. Country music fans proved one thing beyond doubt; they really dig the music they love so well. They probably know more and are more wholeheartedly enthused about what they like than any music appreciation group. A live performance of country-western stars makes the reason readily obvious. The performers are not only great musicians, they are top flight entertainers as well. Even more important, their material moves the audience emotionally, whether it be humor, love, religion, or sadness. They are also exceptionally fine citizens, many of them deeply religious. Their delivery is straightforward, with an emphasis on just plain fun. KMA's Mike Heuer, host on Saturday night (7-Midnight) "KMA Bandstand, Country Style" acted as emcee. Mike is well acquainted with many country-western performers. The thunder of applause when Mike asked how many in the audience listened to his Saturday night show was a fine indication of his show's popularity, and we might say, the best "music" Mike heard all evening. Mike taped interviews with each of the stars for use on his

Saturday show. Pictured below with Mike is Grandpa Jones whose banjo pickin' is nothing short of astonishing! His make-up will fool you. He is a much younger man than he appears, and his lively, rompin'-stompin' on stage is almost unbelievable "for a man his age". Grandpa put so much enthusiasm into his performance he almost



disabled his banjo pickin' fingers! He has a new single out of "T for Texas". Pictured at bottom page 6 is the entire group on stage for their finale: Mike, Grandpa Jones, Jean Shepard, Hawkshaw Hawkins, and Carl Smith (headliner). In the background are members of Carl Smith's "Tunesmiths". Kenny Bonham, the guitar player in the background between Mike and Grandpa Jones, also appeared with the Grand Ole Opry group of a year ago. Kenny demonstrates exceptional solo guitar . . . a boy to watch! Pictured top right with Mike is Carl Smith whose real thrill to the audience was a medley of his top hits. Carl demonstrated a stage style, exciting, yet graceful and dignified. Carl's home is a ranch near Nashville where he raises Angus cattle and quarter horses. His only wish is that he had more time to show his horses around the country. Pictured center is Mike with Jean Shepard and Hawkshaw Hawkins, husband and wife, with their son Don Robbin. Don is named after country artists Don Gibson and Marty Robbins, close friends of the Hawkins'. Jean and Hawkshaw each are stars in their own right. They did a husband-wife type comedy banter. Jean finally conceded men are superior, but we think she really had the upper hand. In addition to Hawkshaw's musical talents, he is also a top-flight bull-whip artist, which he demonstrates at state fairs. At bottom Mike is pictured with Linda Howard of St. Charles, Iowa. Linda, 14, possesses exceptional country singing talent which she was coaxed to display during the second performance. Linda recorded six songs for Mike to use on his Saturday night program. Mike took the tapes to Nashville where he and his wife attended the National Country Music Festival November 8 through 10. Everyone of importance in the field of Country Music attends the

Continued on Page 15



On the KMA PARTY LINE

By DORIS MURPHY

Acting as one of the Official Hostesses at the opening of the new PAGE THEATER in Shenandoah, and attendant to Queen Miss Linda Burdick, was an honor enjoyed by Miss Annette May, daughter of Mr. and Mrs. Edward May, in September. Miss Susan Morton was also an attendant. The girls were featured in a float in the fall parade, sponsored by the Shenandoah merchants. Later the hostesses welcomed the guests attending the theater the two opening nights, and pinned orchids on all the women. Pictured on this page are the three official hostesses as they appeared in the theater lobby.

Reading left to right are: Miss Annette



Miss New Page, Linda Burdick (center), and her attendants, Annette May (left) and Susan Morton (right), lend a touch of glamour to grand opening ceremonies of the elegant new Page Theater in Shenandoah. Photo Courtesy Duane's Studio.

May, Miss Linda Burdick, "Miss New Page"; and Miss Morton. Annette, who was student director of a high school play last year, will have the thrill this year of playing the lead in the Senior Class play: "Seventeenth Summer" to be presented Nov. 8. Annette's sister "Karen" was chosen treasurer of the Freshman class and attendant to the Homecoming Queen, (see picture on adjoining page) and eight year old Eddie is a new member of Cub Scouts. Even their mother, Eleanor Jean, has taken on the responsibility of a Den Mother, so the school year promises to be a busy one around the Edward May household.

Two first place awards and four ribbon awards were won by Patricia Koelker, wife of KMA Station Manager Anthony Koelker, at the third annual Clarinda Art Exhibition sponsored by the Clarinda Rotary Club in October. The exhibition of 271 entries was held at the Wibholm Hall. Mrs. Koelker won first place in Portraits, and first in Abstracts and Semi-Abstracts with her painting of "Cattails". She also won ribbon awards for a Still Life painting: "Pussy Willows"; for an oil landscape "The Fence", in Mixed Media for her "Figures in Ink," and first for her Figures. Mrs. Claudine Naven, wife of Program and News Director Dean Naven, won a Ribbon Award for her "Study in Despa." Judges were Mrs. Harry H. Threlkeld of Joslyn Art Museum of Omaha, and George Shane, art critic of the Des Moines Register.

It is not at all surprising on Hallowe'en night to answer the doorbell and find a group of kiddies outfitted in funny masks and costumes, asking for "Tricks or Treats". But, a hospital is about the last place in the world you would expect to see someone wearing a Hallowe'en mask and wig. That's why nurse Helen Bishop of the Shenandoah Hand Hospital staff was so shocked when she answered a call button about 2:30 one night, to find the patient sitting up in bed with a "face that didn't look human", wearing a black wig and the sheet pulled up around her neck. It was none other than Gayle Maher of the KMA Mail department. When sleep didn't come easily, Gayle decided to play a prank on the nurses. So she donned a mask and wig that had been brought to her by a friend, as a "gag gift", then pushed the button

that summons a nurse. The sight was too funny to enjoy all by herself, so the nurse soon called another nurse to come and have a good laugh. "At least," said Gayle, "I got someone to visit with for awhile!"

Good luck smiled on three members of the KMA Staff in October when Earl Crowley of the KMA Accounting department won a big sack of groceries free, and Miss Evalyn Saner and KMA Editor Duane Modrow's wife, Helen, each won 500 Trade Stamps in a drawing at a local grocery.

KMA News Editor Dean Naven attended a State Department Briefing on the U.S. Foreign Policy, in Washington D.C. Oct. 15 and 16. This is the third conference he has attended at the State Department. Six hundred press, radio, and television representatives were in attendance.

A table setting in "lavender and old glass" featuring Mrs. Earl May's collection of rare Westward Ho frosted glass of the 1800's was one of the main attractions at the beautiful "HALL OF FLAME" sponsored by the Shenandoah Garden Club. The affair, attended by eight hundred, was held at the Legion Country Club in October. Pictured on the back cover is a picture of Mrs. May beside her magnificent table, which was dominated by a rare and unusual large coin silver candelabrum. The elegant pale orchid organdy tablecloth carried a beautiful hand stitched border featuring an outline of the same motif as is on the Westward Ho glass ware. Floral pieces were also lavender. Mrs. May's table was also displayed at the third annual Flaming Festival held in Omaha Sept. 26th when many elegant table settings and decorated colorful candles were shown. The "Hall of Flame" featured displays of some of the loveliest and rarest collections of china, crystal and other appointments ever assembled in Shenandoah.

Florence Falk, the Farmer's Wife has had a busy October. Among the various busy events, she was general chairman of Page County Teacher's dinner at Essex, which was served Smorgasbord style; also a Sunday supper to some 200 young people of Southwest Iowa Lutheran Churches. The biggest event, which far exceeded expectations in attendance, was the Craft Carnival held at the old Shenandoah Armory, Oct. 25th. Many hundreds of our KMA listeners heard of the event thru her program, and took a day's vacation and en-

joyed the beautiful fall day and the many fine exhibits of handicraft. It has been estimated over 4,000 attended. The Farmer's Wife personally greeted many of her listeners. This annual event was sponsored by the Page County Farm Bureau women and the Page County Extension Council. Florence's class in handicraft in conjunction with the adult education classes at the Clarinda Community College, was quite pleased at the material their teacher brought back with her from the Iowa Governor's Christmas Work Shop held in Des Moines.

I'll bet the children who came to the Warren Nielson home Hallowe'en night, wish Hallowe'en came every week! Because they were given such a delightful surprise. Instead of giving the "Trick or Treaters" candy, Mrs. Nielson and 8 year old daughter Holly made piping hot pumpkin doughnuts right out on the screened-in front porch and served them to the costumed children as they arrived. Over half a hundred children were given fresh home-made doughnuts. Florence had her deep fat fryer set up on the porch, and pumpkin jack o'lanterns around, making it a very festive occasion. The doughnuts were slipped into oil paper, so they could take them with them, or eat them there. This is a wonderful idea, and may be something YOU will want to do next Hallowe'en.

Wedding vows were spoken at the Presbyterian Church Friday night, Oct. 26, at seven o'clock in Essex by Miss Susan Morgans and Junior Victor Eckley, both

Continued on Page 13



Three lovely misses representing their respective classes as attendants to Shenandoah Homecoming Queen, Faye Hickman, Friday, October 26. L to R Pam Oswald, junior; Diane Miller, sophomore; Karen May, freshman.

A Letter From The Farmer's Wife

November Greetings from the Farm! !

At this writing (the last week in October) the fields have not turned "sere and brown" as the poets often said but there is a beautiful green color to all the yards and roadsides. The farmers have been wishing for a good hard killing frost and freeze so as to cut down on the undergrowth in the harvest fields. The weather prediction is for colder weather to move in. Today I washed, and hung out the clothes in the brilliant and warm October sunshine without a jacket, or headscarf. Probably when you read this Guide the snow will be flying about.

This has been a very busy fall for us on this particular farm. The farmer has some of the beans harvested and started in on the fields of corn just west of the house. Today some of the plowing was done. From the animal division the little pigs are to leave their mothers in the morning. For a few days they will mind and then they will find busy things to do such as getting out under fences in soft ground. The summer calves have grown so much. Tippy IV has matured into quite a good dog for us. She is particularly fond of the farmer. Tippy III was the children's favorite. So it goes.

Karenann is well into her sophomore year



Karenann Falk and Pat Sweeney of Shenandoah presented a special baton act for Homecoming at Northwest Missouri State College. Photo by Robert Myers, NWMSC.

at Northwest Missouri State College at Maryville and likes it fine. She is taking Anatomy, Material Summary, History and Principles of Education, Humanities, Home Management, Swimming, Tennis and Badminton, is a baton twirler with the marching band, plays a clarinet in the concert band. Of course there is a certain amount of "sessions" in dormitories and the girls have a lot of fun along with the seriousness of an education. Homecoming was held October 20 and that also was the big Band Day—The parade was excellent this year with beautiful floats, many bands and lots of humor. We attended the parade and the football game in the afternoon. Enjoyed seeing the entire football field one great band, the sun broke through the clouds and it was one tremendous combination of colors. She will be home for Sue Morgans' wedding and then back until Thanksgiving. We feel fortunate to see her a few times. She is working on several long theme assignments with a great deal of research.

Bruce is really a busy person, as president of the Senior class, also head of the St. John's Luther League. This entails a great responsibility. He is secretary of our Sunday School also. It doesn't seem possible but this week he sent in his deposit for a room at the men's dormitories for college

in September of '63. The seniors have already had class pictures taken and the Trojan Annual Staff is hard at work on that project. As to the Farmer's Wife, I am real happy to see October coming to a close. Earlier, little did I realize everything would be in October. As class president's mother it fell my lot to chairman the Page County Teachers dinner in Essex and with the wonderful cooperation of all the mothers we served a very decorative and tasty Swedish Supper Smorgasbord style to some 219 people. Then October 25 the 3rd annual Craft Carnival was held in Shenandoah this year. As chairman, and my co-chairman, Mrs. Darrell Welch of Extension service, we felt it a very successful day. Farm Bureau Women and Extension Women of Page County work together on this big project. The business men of Shenandoah gave us splendid cooperation in the way of

Continued on Page 15

Homemaker's Guide

"The Farmer's Wife"

By FLORENCE FALK

So many requests have come in for quantity recipes for harvest suppers, church servings at Thanksgiving time. Do hope you will like these for a few:

HAM AND NOODLES AU GRATIN

To serve 100 with a $\frac{3}{4}$ cup portion.

Noodles, 2 lbs. 8 ozs.

Boiling water, $1\frac{1}{2}$ gallons

Cook noodles in boiling water until tender.

Butter, $1\frac{1}{4}$ pound or $2\frac{1}{2}$ cups

Onion, chopped 1 cup

Flour, all purpose, sifted 3 cups

Milk, hot 2 gallons

Melt the butter, add onion and cook until tender. Blend in the flour. Add mixture to the hot milk, cook until thickened, stirring frequently.

Ham, cooked and chopped 12 pounds or $2\frac{1}{2}$ gallons (use smoked ham)

Combine ham, noodles and sauce. Place in baking pans $20\frac{1}{2} \times 12\frac{1}{2} \times 2\frac{1}{2}$ inches using about 1 gallon and 2 cups per pan.

Breadcrumbs, dry $4\frac{1}{2}$ cups

Cheese, grated 3 cups

Paprika, 1 tablespoon

Butter, melted $\frac{3}{4}$ cup

Blend crumbs and cheese, add paprika and melted butter. Mix and sprinkle over top of pans. Bake 350° oven for 35 to 40 minutes. To use chopped luncheon meat instead of ham use 12 pounds.

* * *

MASHED POTATOES

To serve 100 with $\frac{1}{2}$ cup portions, this uses a No. 8 scoop.

Potatoes, peeled 25 pounds

Milk, hot 1 to $1\frac{1}{2}$ quarts

Salt, $\frac{1}{4}$ cup

Butter, melted 2 cups

Boil or steam the potatoes until tender. Drain and mash in mixer at low speed until smooth.

Gradually add just enough milk to moisten. Add salt and butter, beating at low speed. Mix at high speed until potatoes are light and fluffy.

* * *

CABBAGE WITH HOT VINEGAR DRESSING

Serves 100 with 4 ounce servings.

Cabbage, cut in 4 ounce wedges, 25 pounds

Bacon, cut in 1 inch pieces $1\frac{1}{4}$ pounds

Vinegar, mild $3\frac{1}{2}$ cups

Sugar, 1 cup

Salt, $\frac{1}{4}$ cup

Cook cabbage until tender in boiling water or steam until tender. Drain. Fry

bacon until crisp. Combine vinegar, sugar and salt with the bacon and bacon fat. Heat mixture and serve over the cooked cabbage.

* * *

SWEET POTATO BALLS

To serve 100 portion each one 2 oz. ball.

Sweet Potatoes, mashed 3 quarts $2\frac{1}{4}$ cups

Sugar, $1\frac{1}{2}$ cups

Eggs, 15 or 3 cups full

Salt $1\frac{1}{2}$ tablespoons

Lemon Juice, $\frac{1}{3}$ cup

Marshmallows, large size 100

Flour all-purpose, sifted 1 quart

Eggs, for breading, 12 or $2\frac{1}{2}$ cups

Breadcrumbs, soft 2 gallons

Combine mashed sweet potatoes, sugar, eggs, salt and lemon juice. Beat well. Portion the mixture with a No. 20 scoop or $3\frac{1}{4}$ tablespoons. Press the marshmallow into the center of each portion and form into a ball. Roll balls in flour, then in beaten egg, and last in the crumbs. Fry in deep fat 375° until brown. Drain.

* * *

APPLE-CRANBERRY CRUNCH DESSERT

Serves 100 each serving $2\frac{1}{2} \times 2\frac{3}{4}$ inches.

Sugar 2 quarts

Water 2 quarts

Cranberries 1 gallon

Apples, unpeeled, chopped $4\frac{1}{2}$ quarts

Boil sugar and water for 5 minutes. Add cranberries and boil for 5 minutes longer. Cool and stir apples into cranberry sauce. Place in buttered baking pans $16\frac{1}{2} \times 10\frac{1}{2} \times 2\frac{1}{2}$ inches or one pan for 25 portions.

Oatmeal, uncooked 2 quarts

Flour, sifted 3 cups

Brown sugar, $1\frac{1}{4}$ quarts, packed

Salt, 2 tablespoons

Butter, melted 3 cups

Nut meats, chopped 1 quart

Combine rolled oats, flour, brown sugar and salt. Add the melted butter, mixing until crumbly. Sprinkle over the apple-cranberry mixture. Top with the nut meats. Bake at 350° moderate oven for 1 hour.

* * *

COCOA

To serve 100 cups.

Cocoa, 6 cups

Sugar, 6 cups

Water, boiling 10 cups or $2\frac{1}{2}$ quarts

Mix cocoa and sugar. Add boiling water and boil for 10 to 15 minutes.

Evaporated milk, 1 gallon

Non fat dry milk, 1 gallon or 4 pounds

Water, 5 gallons

Add evaporated milk to chocolate mixture. Reconstitute the dry milk with the water. Combine with cocoa mixture. Reheat. Beat with a wire whip just before serving.

Homemaker's Visit

By **BERNICE CURRIER**

CRANBERRY REFRIGERATOR CAKE

- A— 2 c. fresh cranberries chopped
1 large banana diced
 $\frac{3}{8}$ c. sugar
- B— 2 c. crushed vanilla wafers
- C— $\frac{1}{2}$ c. butter or margarine and 1 cup powdered sugar
- D— 2 eggs
- E— $\frac{1}{2}$ c. chopped nuts
- F— 1 c. heavy cream whipped

Combine "A" and set aside; place $\frac{1}{2}$ of "B" in bottom of 8 inch square pan. Cream "C" until fluffy, add "D" and beat well. Dip this over crumbs and smooth out gently; top this with "A"; sprinkle with "E"; spread "F" over all. Cover with remaining "A" and chill overnight. Serves 9.

* * *

FRESH CRANBERRY CRUNCH

- A— 1 c. sugar
1 T. cornstarch
 $\frac{1}{2}$ c. water
1 t. vanilla
 $\frac{1}{8}$ t. salt
- B— 2 c. fresh cranberries
 $\frac{1}{2}$ c. raisins
- C— 1 c. uncooked rolled oats
1 c. brown sugar packed
 $\frac{1}{2}$ c. flour
- D— $\frac{1}{3}$ c. butter or margarine

In a saucepan mix "A" in order given; add "B", bring to a boil and simmer 5 minutes. Cool slightly. Mix "C" together, cut in "D" with pastry blender. Sprinkle $\frac{1}{2}$ of this over bottom of greased 8 inch square pan. Drop the 1st mixture over the crumbs by tbs. then smooth out with knife. Top with remaining "C". Bake about 45 minutes at 350°. Serve warm or cold with a topping of vanilla ice cream. Makes 9 servings.

* * *

COCONUT PECAN CONFECTION

- A— 2 lbs. powdered sugar
 $\frac{1}{2}$ lb. pkg. angel flake coconut
2 c. crushed pecans
- B— 1 can Eagle Brand Condensed milk
1 stick butter or margarine
1 t. vanilla
- C— 1 pkg. (12-oz.) chocolate bits
 $\frac{1}{4}$ of a square of paraffin

Put "A" in a bowl, add "B" and mix together well (maybe use your hands). Let stand in covered bowl in refrigerator several hours or overnight. Make out into small balls, it makes about 150.

Melt "C" in top of double boiler over hot simmering water. Using two forks or a pair of tongs, dip the balls in this and place on waxed paper.

Leave some of them without dipping if you like.

* * *

YAM COCONUT CROQUETTES

- 2 c. canned yams mashed
 $\frac{1}{2}$ c. chopped pecans
 $\frac{3}{4}$ c. very fine coconut
2 T. softened butter
 $\frac{3}{4}$ c. drained crushed pineapple
1 t. salt
1 c. crushed cornflakes

Combine all but the cornflakes and mix well. Shape into 8 croquettes cone-shaped then roll in crushed cornflakes. Place on greased cooky sheet and bake about 30 minutes at 325°, or until lightly browned.

* * *

FIG HAM SLICE

- 1 ham steak (about 2 lbs.)
8 whole cloves
2 T. brown sugar
1 c. bottled fig juice
 $\frac{3}{8}$ c. fine flaked coconut
2 T. cornstarch
2 T. water

Slash fat on edges of ham slice then place in shallow baking dish. Stud it with cloves and sprinkle with the sugar. Pour fig juice over ham and bake in 325° oven about 1 hour. Cover for the first 30 minutes then uncover the last 30. Baste often with the fig juice all the time it bakes. About 15 minutes before it is done, sprinkle with the coconut. Serves 4.

* * *

BAKED STUFFED EGGPLANT

- 1 large eggplant
4 T. melted butter
 $1\frac{1}{2}$ c. bread crumbs
1 small onion minced
1 c. cooked green beans or peas
1 t. salt

Wash and cut eggplant in half lengthwise. Remove pulp without breaking the shell halves. Cut the pulp into small pieces, cook in hot water until tender then drain. Put the butter in heavy saucepan, add the crumbs and stir until well mixed. Save half of the crumb mixture. To the remaining crumbs add the other ingredients and the eggplant pulp; mix well and pile lightly into the shells. Sprinkle tops with remaining crumbs. Pour a few tbs. of hot water around the shells after placing them in a shallow baking dish. Bake at 350° for about 30 minutes. Makes 4 servings. Or possibly six.

PARTY LINE

Continued from Page 8

of Essex. The bride, who is KMA record librarian and KMA Guide copy editor, was attended by Miss Karenann Falk of Essex, daughter of Florence Falk, the Farmer's Wife, as maid of honor. Miss Sharon Bopp of Shenandoah, who is a member of the KMA staff, served as bridesmaid. The bride's gown of formal length was fashioned of Skinners Dulcette satin. The veil was held by a pearl and crystal rosette crown. She carried a colonial bouquet of phalaenopsis with white satin trim. The attendants wore floor length dresses of peacock glo-lite satin. Their hats were of matching peacock blue net and satin in the shape of roses accented with small pearls. Each carried a colonial bouquet of carnations with white satin. After the services, a reception was held in the church parlor. Following a short honeymoon in Kansas City, Mr. and Mrs. Eckley are now at home at 105 South Webster in Shenandoah.

Diane Rankin, daughter of Mr. and Mrs. J. D. Rankin, Jr., has had the honor of being chosen for one of three leads in the Junior Class play, and is a member of one of the seven winning quartets selected to participate in All State Chorus to be held in Des Moines during Thanksgiving vacation.

Heading south in the KMA station wagon early this month, will be announcer Mike Heuer and his wife, to attend the annual National Country Music Festival to be held at the Andrew Jackson Hotel in Nashville, Tenn., Nov. 9 and 10. This is the 11th year that WSM and the stars of "Grand Ole Opry" will host country music dee jays from the United States and Canada as they gather to mark the 37th birthday of the nation's oldest country music show. The festival will officially open with a breakfast address by Frank Clement, former governor of Tennessee and this year's Democratic gubernatorial nominee. Mike's mother from Howard Lake, Minnesota will take care of the children. This is the first time Mike and his wife have been away from all of the children at one time. Enroute the Heuer's plan to stop in Jefferson City, for a brief visit with Dean Lupkey, State Civil Defense Director of Missouri. Mr. Lupkey was Mike's commanding officer during the Korean war. Mike, host of the KMA BANDSTAND COUNTRY STYLE broadcast from 7 to midnight every Saturday, is looking forward to meeting and visiting with many country music disc

jockies and hearing many of the famous recording artists in person.

Imagine Bruce Falk's surprise, while driving down the highway a few miles from Essex, to see a stunt flyer's helmet come flying thru the air, and land right ahead of his car. Thankful it didn't come thru his windshield, Bruce got out and picked it up. The name "Tim" written across the helmet was the only clue as to the owner. Bruce's mother, Florence Falk, told the story on her KMA **HOMEMAKER** program, hoping the owner might hear about it. Sure enough he did, and in a few days a young man from Omaha appeared at the Falk farm home, saying his cousin had lost the helmet and he had come for it. He said the strap on the helmet had snapped just as he made a parachute leap from the plane. He had worried all the way to the ground for fear he might hurt his head landing, but luckily he landed safely. The incident proved to Bruce, that you never know what might fall on you from the air, as you are driving down the roads!

49-County Local KMA Election Coverage

This year KMA undertook the most complete election returns coverage of any medium in the area. KMA newsmen Dean Naven and Ralph Childs were hard at work many days before election arranging for correspondents in 49 counties in the KMA listening area. All 49 phoned in county returns as precincts reported. A special staff was on hand in the KMA studios to man the phones. As the polls closed, an early trickle of calls soon became a steady din of ringing telephones. It soon became obvious this wide coverage by KMA was indeed an ambitious project. Previously alerted long-distance operators did their usual magnificent job keeping traffic jams to a minimum. All this local coverage combined with the nationwide picture via the facilities of the ABC Radio Network and the Associated Press and United Press International wire services gave KMA listeners the earliest picture in their own counties, the region, and the nation. It is estimated over 3,000 newsmen, statisticians, public opinion experts and technicians were involved in bringing you the returns on KMA.

KMA Daily Program for November, 1962

960 ON YOUR DIAL

5,000 WATTS—ABO

DAILY DAYTIME PROGRAM

MONDAY THROUGH FRIDAY

5:00 a.m.—Town & Country Hour
 6:00 a.m.—News & Weather
 6:15 a.m.—Western Star Time
 6:30 a.m.—RFD 960
 7:00 a.m.—Dean Naven, News
 7:15 a.m.—Frank Field
 7:30 a.m.—Markets
 7:35 a.m.—Lawrence Welk's Show
 7:45 a.m.—Morning Headlines
 8:00 a.m.—Take 30 for Music
 8:30 a.m.—Bernice Currier
 9:00 a.m.—Breakfast Club
 9:55 a.m.—News
 10:05 a.m.—KMA Community Calendar
 10:10 a.m.—Housewives Serenade
 10:30 a.m.—Florence Falk
 11:00 a.m.—Back To The Bible
 11:30 a.m.—Infomacast
 12:00 noon—Dean Naven, News
 12:15 p.m.—Edward May
 12:30 p.m.—Tom Beavers
 12:45 p.m.—Markets
 1:00 p.m.—Jim Ross Show
 4:00 p.m.—Mike's Matinee
 5:40 p.m.—Tom Harmon Sports
 5:50 p.m.—Alex Dreier
 6:00 p.m.—Life Line
 6:15 p.m.—Paul Harvey
 6:20 p.m.—On The Line With Bob Considine
 6:25 p.m.—As Naven Sees It
 6:30 p.m.—Ralph Childs, News
 6:45 p.m.—Mkts. & Weather

MONDAY NIGHT

7:00 p.m.—Night Flight
 10:00 p.m.—Ralph Childs, News
 10:15 p.m.—The Late Show
 11:00 p.m.—News
 11:05 p.m.—The Late Show
 11:30 p.m.—Back To The Bible

TUESDAY NIGHT

7:00 p.m.—Night Flight
 10:00 p.m.—Ralph Childs, News
 10:15 p.m.—The Late Show
 11:00 p.m.—News
 11:05 p.m.—The Late Show
 11:30 p.m.—Back To The Bible

WEDNESDAY NIGHT

7:00 p.m.—Night Flight
 10:00 p.m.—Ralph Childs, News
 10:15 p.m.—The Late Show
 11:00 p.m.—News
 11:05 p.m.—The Late Show
 11:30 p.m.—Back To The Bible

THURSDAY NIGHT

7:00 p.m.—Night Flight
 10:00 p.m.—Ralph Childs, News
 10:15 p.m.—The Late Show
 11:00 p.m.—News
 11:05 p.m.—The Late Show
 11:30 p.m.—Back To The Bible

FRIDAY NIGHT

7:00 p.m.—Night Flight
 10:00 p.m.—Ralph Childs, News
 10:15 p.m.—The Late Show
 10:30 p.m.—The Late Show
 11:00 p.m.—News
 11:05 p.m.—The Late Show
 11:30 p.m.—Back To The Bible

SATURDAY PROGRAMS

5:00 a.m.—Town & Country Hour
 6:00 a.m.—News & Weather
 6:15 a.m.—Western Star Time
 6:30 a.m.—RFD 960
 7:00 a.m.—News
 7:15 a.m.—Frank Field
 7:30 a.m.—Lawrence Welk's Band
 7:45 a.m.—Morning Headlines
 8:00 a.m.—Take 30 for Music
 8:30 a.m.—Bernice Currier
 9:00 a.m.—Saturday Shopper
 10:30 a.m.—Florence Falk
 11:00 a.m.—Back To The Bible
 11:30 a.m.—Polka Party
 12:00 noon—News
 12:15 p.m.—Edward May
 12:30 p.m.—Tom Beavers
 12:45 p.m.—Market Review
 1:00 p.m.—Auction Time
 1:15 p.m.—Football, Iowa U.
 4:00 p.m.—Saturday Matinee
 5:00 p.m.—Football Scoreboard
 5:30 p.m.—Saturday Matinee
 6:00 p.m.—Life Line
 6:15 p.m.—Music on Deck
 6:30 p.m.—News
 6:45 p.m.—Football Finale
 7:00 p.m.—KMA Bandstand Country Style
 10:00 p.m.—News
 10:15 p.m.—KMA Bandstand Country Style
 11:00 p.m.—News
 11:05 p.m.—KMA Bandstand Country Style
 11:55 p.m.—News

SUNDAY PROGRAMS

6:30 a.m.—Back To The Bible
 7:00 a.m.—News & Weather
 7:15 a.m.—Hymn Time
 7:30 a.m.—Sun. Worship Service
 7:45 a.m.—Morning Headlines
 8:00 a.m.—Radio Bible Class
 8:30 a.m.—Your Worship Hour
 9:00 a.m.—Sunday School Lesson
 9:15 a.m.—Bible Truth
 9:30 a.m.—Sunday Album
 12:00 noon—News
 12:15 p.m.—Sunday Album
 4:55 p.m.—Mon. Morn. Headlines
 5:10 p.m.—Sunday Album
 6:30 p.m.—News
 6:45 p.m.—Guest Star
 7:00 p.m.—Freedom Calls
 7:30 p.m.—Revival Hour
 8:00 p.m.—Sunday Album
 8:30 p.m.—Issues & Answers
 9:00 p.m.—Hour of Decision
 9:30 p.m.—Pilgrimage
 10:00 p.m.—News
 10:15 p.m.—Erwin Canham
 10:30 p.m.—Revival Time
 11:00 p.m.—Hour of Decision
 11:30 p.m.—Music In The Night
 11:55 p.m.—News

Every Afternoon
 Monday Through Saturday
 ABC Network News 5 minutes
 before the hour

Local News on the hour
 Weather on the half hour

COUNTRY MUSIC

Continued from Page 7

convention which is held on the anniversary of the world famous Grand Ole Opry, 37th this year, the same as KMA's. In addition to the many music sessions and sights at Nashville, Mike and wife Betty will see a recording session by special permission, tape interviews at WSM radio station studios on Friday, and be guests of Eddie Arnold at his ranch near Nashville. We'll have the results of Mike's trip next month. The American Legion of Shenandoah which sponsors Grand Ole Opry took a poll among fans from a list of about 60 names of country music headliners, which Mike prepared for them. Voters checked three favorites. The Legion will try to get one of the first ten as the headliner of next year's show. Meanwhile, enjoy all the great country stars every Saturday night from seven till midnight with Mike Heuer on "KMA Bandstand, Country Style".

THE FARMER'S WIFE

Continued from page 10

gift certificates.

Then the district Luther League met at Essex the 28th and this was another chairman deal to serve over 200 young people and their counselors. One of the projects I've undertaken is the teaching of an Adult Education class with the Clarinda Community College. This I have really enjoyed. We meet every Tuesday evening and our class has the distinction of having the largest enrollment. These are the cleverest people and you should see the assignments they bring in finished. I attended the Christmas Workshop in Des Moines and had further material to bring to class. You see we try to make something out of nothing to keep down expenses and we really do. We've had some very interesting guest speakers, also. There are just eight sessions to this course. So with a daily radio program, adult education, Sunday class on Bible study, the wonderful mail you listeners and readers send, there aren't too many minutes to just sit. I have managed to get in some Federated Club Reading — have enjoyed — The Stewardess by Eleanor Bockelman — A Bridge for Passing by Pearl Buck — Castle Door by Couch and DuMaurier — Poems in Praise by Paul Engle — and Hold April by Jesse Stuart for just a few books. As my next letter in the Guide will not be until January of 1963 — we certainly want to be among the first to send you "Season's Greetings" from the farm.

Keep Smiling
Sincerely,
Florence Falk
The Farmer's Wife

November, 1962

KMA Listeners Brighten Christmas At Glenwood

Last year, you will recall, KMA made an appeal to its listeners for donations for Christmas trees for the State School for Mentally Retarded at Glenwood, Iowa. This was the first such drive attempted by KMA in behalf of the school, and although done rather hurriedly, KMA listeners responded with flying colors. The trees, ninety-nine in all, were purchased and delivered in time to be set up and decorated in all the buildings and wards. In fact there was extra cash which was turned over to the school's special service fund. Christmas was much brighter for some 1400 patients and children at the school, thanks to the kindness of you KMA listeners. Again this year KMA is making an appeal for Christmas trees for Glenwood. The trees will be purchased from the May Seed Company at cost and delivered to Glenwood. Any excess donations above the cost of the trees will be turned over to the special services Christmas fund for purchases of needed items not available from state funds. Your donations are handled judiciously and appreciated so very much. You can be sure it is one of the finest gifts you can give this Christmas. There is no set donation amount, just give what you can. Send to: Christmas Tree Fund, c/o KMA, Shenandoah, Iowa.

New Cranberry Recipe Booklet

Just in time for the holidays, new cranberry recipes from the special files of Ocean Spray's Cranberry Kitchen. What's more, these recipes are ones you will enjoy using on your table throughout the fall and winter . . . sauces, salads, hot breads, snacks, and desserts. Frozen cranberries can be used as successfully as fresh berries in the recipes. You'll find 22 choice recipes, all easy to make. These booklets are available to Guide subscribers only for just a nominal cost to help defray postage and handling. Just send 10¢ with your name and address to Cranberry Recipes, c/o KMA and we'll get yours right in the mail for your holiday use. This offer closes November 24th, very soon, so don't delay.

POSTMASTER

**"Return
Requested"**

**Tom Thumb Publishing Co.
Shenandoah, Iowa**

LOIS ADELUNG
108 E GRANT
SHENANDOAH, IOWA

JULY

**Bulk Rate
U.S. Postage
- PAID -
Permit No. 1
Shenandoah, Ia.**



LAVENDER AND OLD GLASS, a beautiful table setting prepared by Mrs. Earl May, above, for "The Hall of Flame" presented by the Shenandoah Home and Garden Club at the Shenandoah American Legion Country Club Tuesday, October 9. There were twenty-seven individual table settings displayed in candlelight from magnificent candelabra used in the decorating. Visitors came from noon till nine in the evening, spending a good deal of time enjoying the many artistic arrangements. Mrs. May's table was designed around a fabulous collection of old glass

with a "Westward Ho!" pattern. The motif of indians, pine trees, log cabins, pioneers frosted in the glassware is carried over in the quilted border of the lavender table cloth. The exquisite coin silver candelholder is intricately carved in the shape of a trimmed tree with deer and foliage around the base. Spode's Maritime rose and pearl handled flatware contribute to the elegance. The floral arrangements blended with the color theme . . . lavender orchid colored mums and pom pom mums touched off with blue ageratum and sprengeri fern.