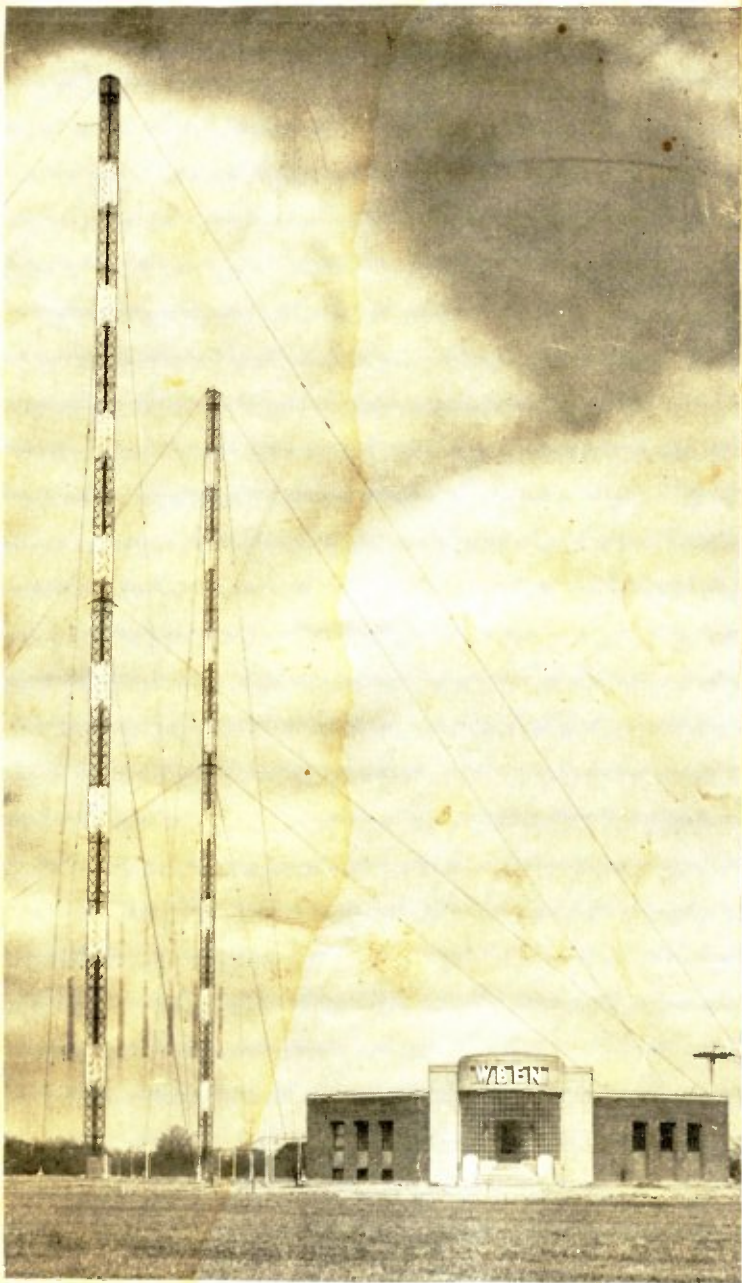


WBEN



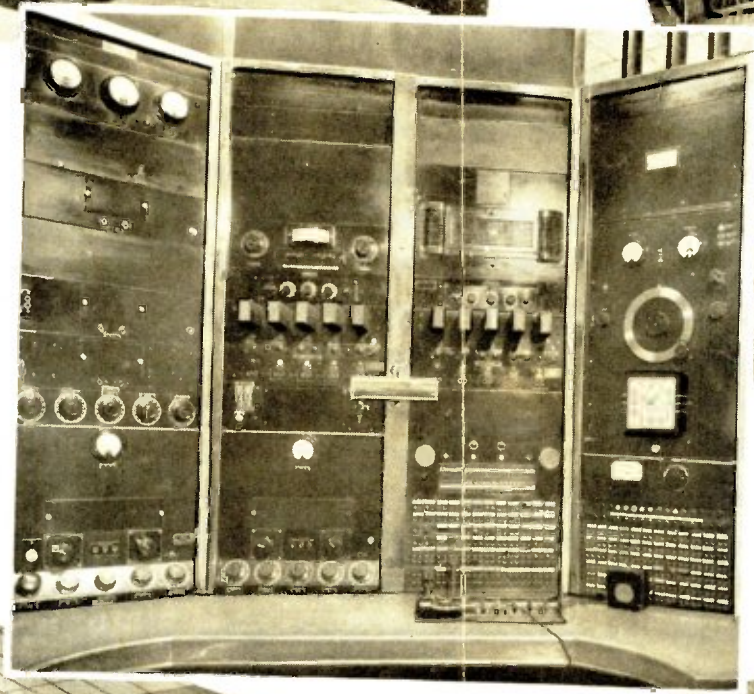
**BUFFALO EVENING NEWS
RED NETWORK STATION**



ABOVE — Announcer Al Taylor and microphone control panel.

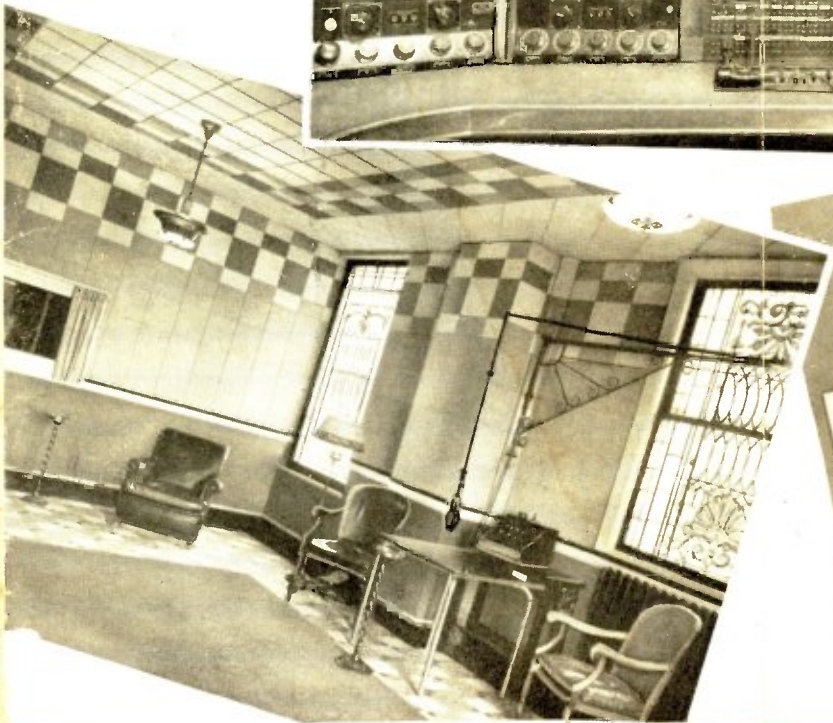
CENTER — All programs, studio or network, "clear" through the master control and, at proper "level" or volume, are sent to transmitter.

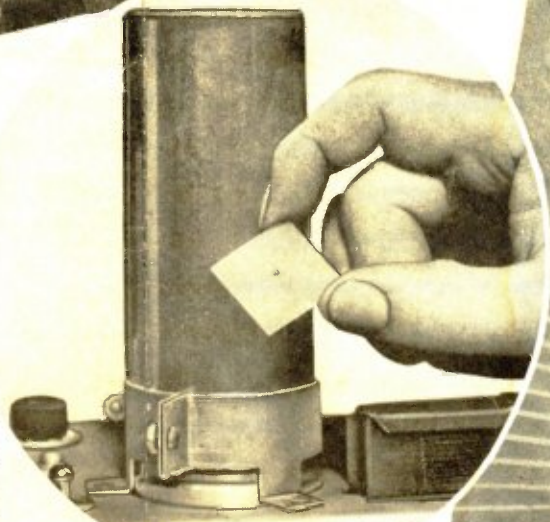
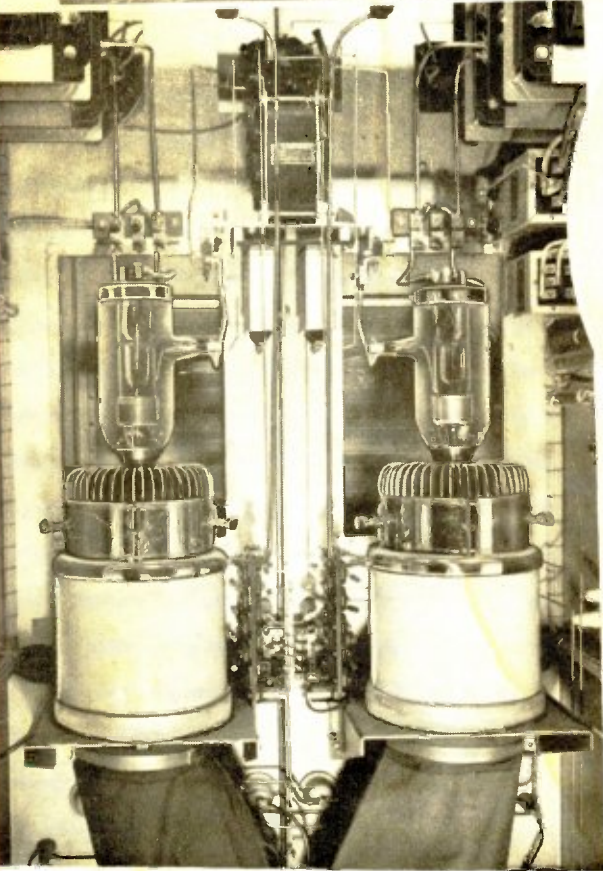
BELOW — View of Studio B. Master control room window at left.



ABOVE — Complicated? These are just two panels of the rear of master control showing only small part of wires and thousands of connections.

BELOW — The studio control operator keeps constant check of program "level" or volume.



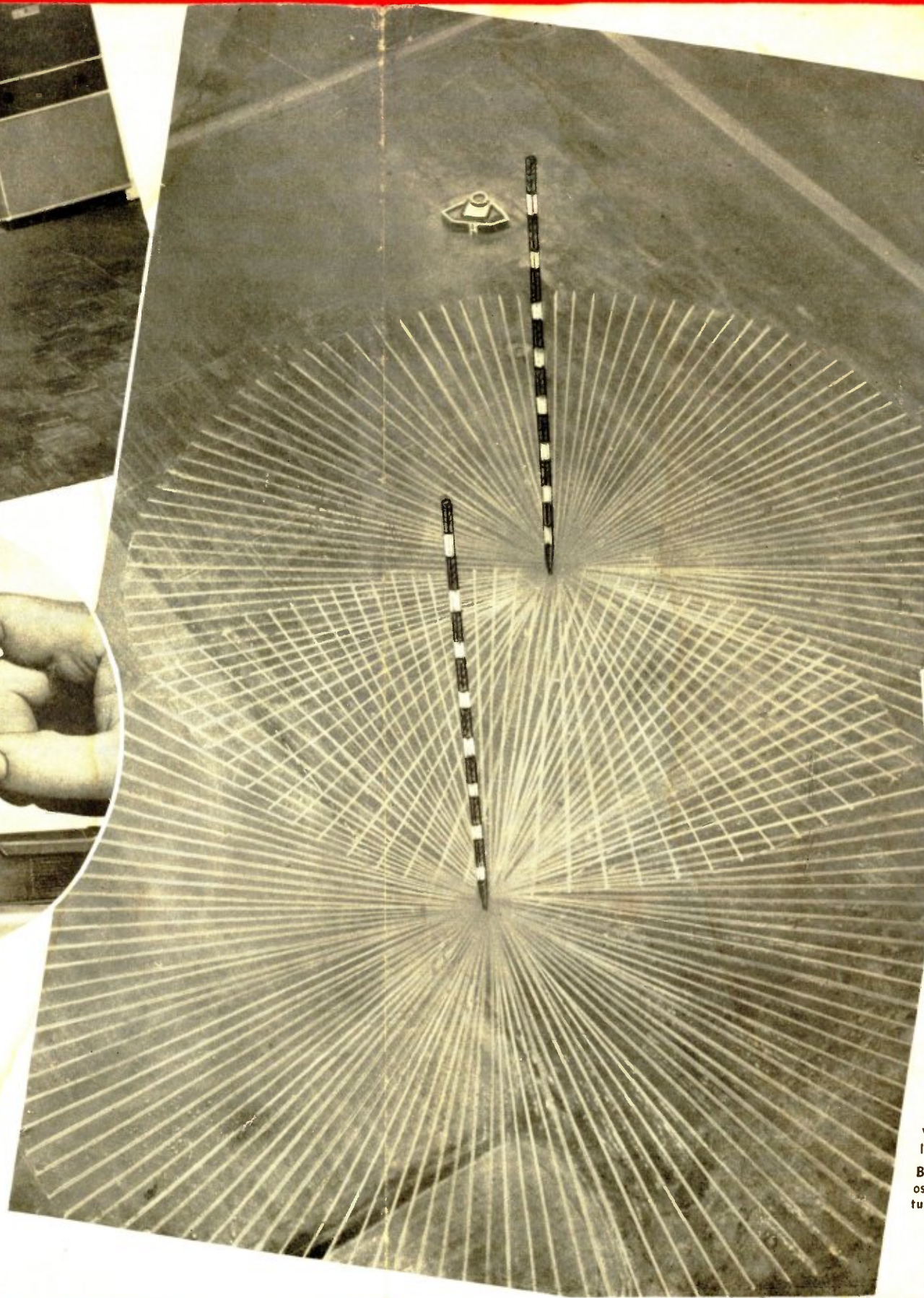


ABOVE — New 5000-watt transmitter and finger-tip control desk.

IN CIRCLE — Tiny wafer of quartz which produces WBEN's signal — 930,000 vibrations a second.

LEFT — Two of giant, air-cooled tubes which help to amplify signal to 5000-watt power.

RIGHT — WBEN's 475-foot towers and ground system. The ground system consists of 120 radials, each 425 feet long, for each tower. Each radial is buried 10 inches deep.

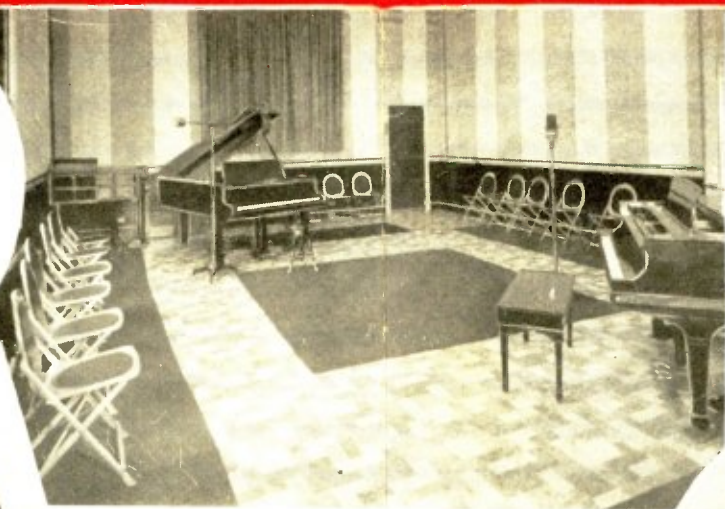


TOP — This porcelain base supports 26 tons of steel in tower.

CENTER — Frequency monitor which double-checks on WBEN's exact wavelength.

BOTTOM — The oscillograph's "picture of sound."

The "Village School"



WBEN Organ Studio

WBEN Serves Western New York

WBEN is heard by a potential radio audience of 400,000 families in Western New York. WBEN consistently is listened to by more of these families than any other station. WBEN hits the bull's eye because it offers the best of the NBC Red Network programs, outstanding local productions, news reports and other public service features.

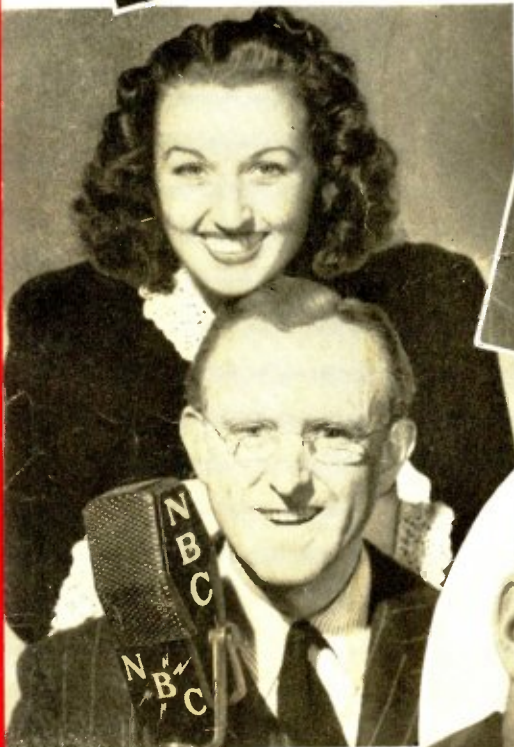
UPPER — Lowell Thomas
LOWER — Pat Hill
LEFT — Bill Mayhew



ABOVE — Charles Lewis
RIGHT — Ed Reimers



WBEN Staff Orchestra



ABOVE — Kay Kaiser, Ginny Simms
RIGHT — NBC's Don Wilson



JIM WELLS, Sportscaster



SALLY WORK
Women's Commentator



The "Ironic Reporter" — Joe Wesp



ABOVE — Eddie Cantor
LEFT — Jack Benny

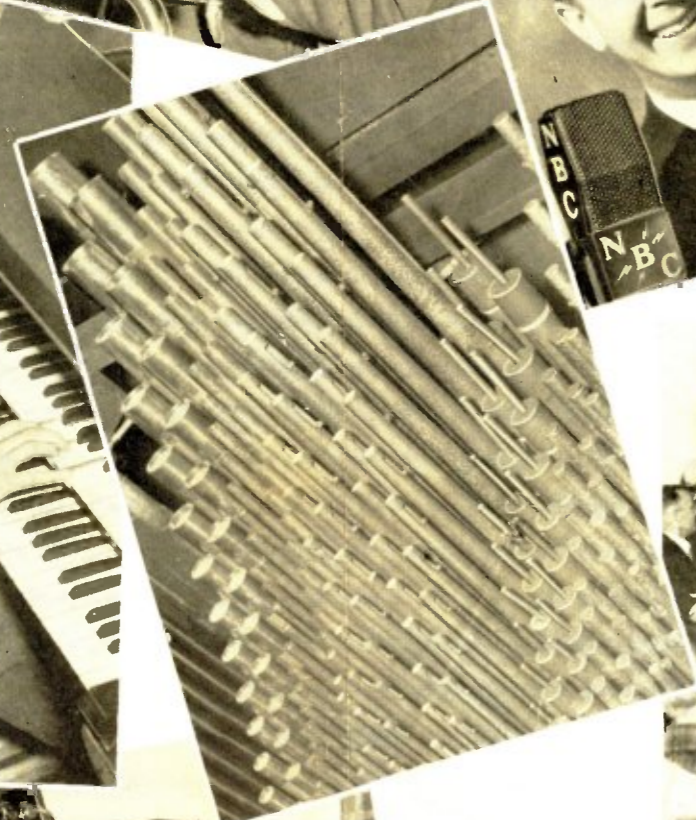




LEFT — Behind the Scenes at WBEN: Members of Sales, Music and Program Departments discuss details of a new show for the air.

Red Network Station 930 Kilocycles

RIGHT — Mixed Quartet: John Priebe, Gertrude Lutzi, Florence Reid and George Torge, WBEN Program Director.



ABOVE — Ken Carpenter, an NBC Announcer.



ABOVE — Ed Cullen, Drama Director.



ABOVE — These machines reproduce the sound recorded on transcriptions.



ABOVE — Drama! WBEN Players in Action!
BELOW — The "Quiz of Two Cities" Program



BELOW — News by teletype at 40 words a minute.



RIGHT — Comparison of 10-inch record and an electrical transcription.

OUTSIDE — Fibber Magee and Molly.



CENTER — The organ pipes as seen from above.

LEFT — Transcriptions are made — for filing or for later use.

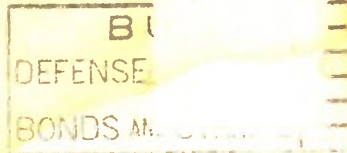
Grand Island, the site of WBEN's new 5000 watt transmitter, has a history closely tied in with that of the Niagara Frontier. Not so many years ago Grand Island was a place of beautiful homes and resorts. These attracted thousands of Buffalonians on river parties and pleasure bent. Today Grand Island again is being developed as the playground for the Niagara Frontier. State and federal funds amounting to nearly \$5,000,000 have been spent on improvements. Parkways connect the bridges and link Beaver Island Park with 649-acre Buckhorn Island State Park at the north end of the island. Eventually, a scenic parkway paralleling the beautiful drive on the Canadian shore is to be built on Grand Island along the west branch of the Niagara, which flows swiftly but beautifully in that region.

PICTORIAL VISIT TO WBEN

WBEN, a familiar and friendly voice in Buffalo, extends greetings to listeners and visitors.

WBEN first went on the air Sept. 8, 1930. It is dedicated to community and public service. Its studios in Hotel Statler have been expanded to keep pace with improved service. Its new 5000-watt transmitter plant at South Parkway and Bush Road, Grand Island, N. Y., is as modern and up-to-date as radio engineering and science could design.

WBEN sets the pace in Buffalo.



Mrs. Harvey H. Weber
R 3
Warsaw,
New York

World Radio History