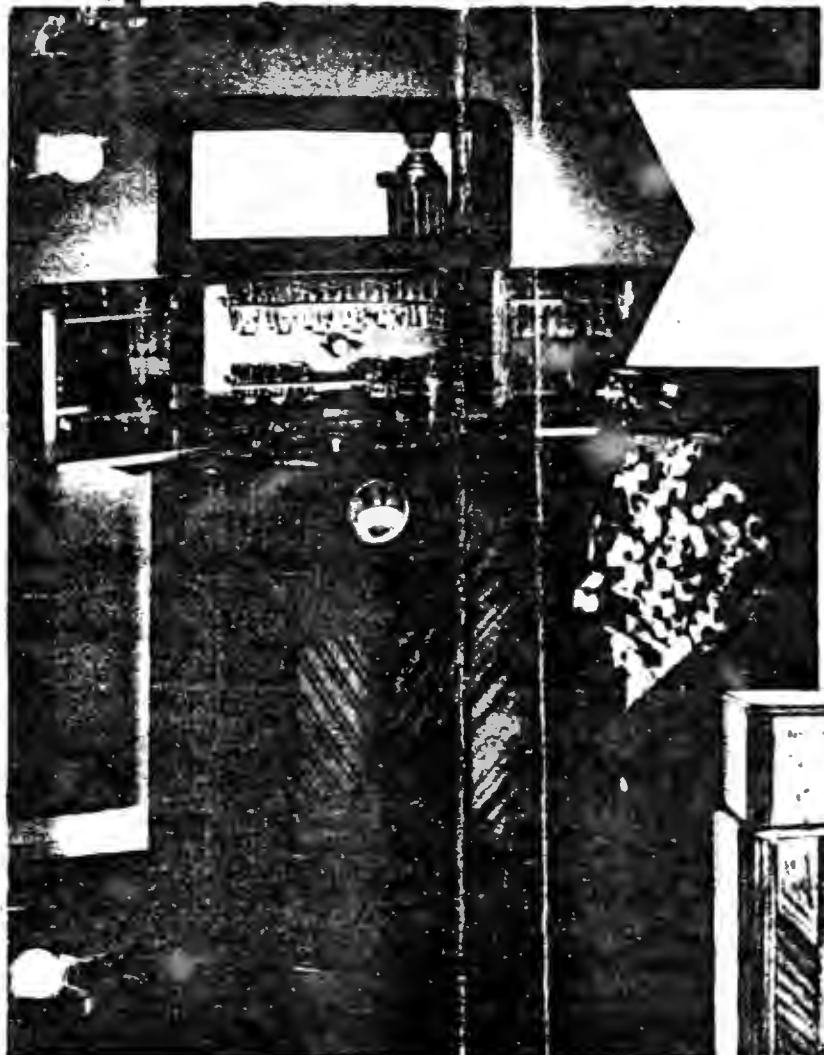
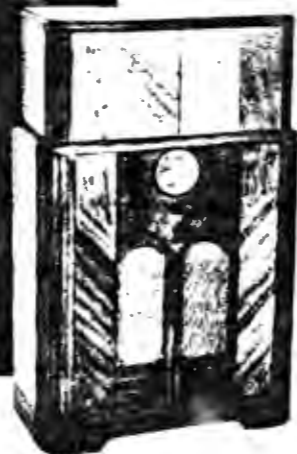


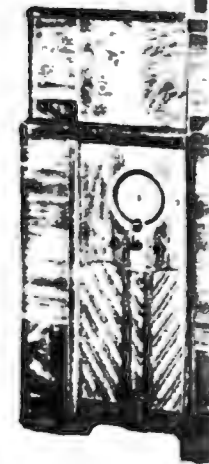
Presenting **RADIOBAR** with *Philco*



SOPHISTICATED Radiobar Model 50-9 (left) you'll find the favorite at the smart penthouse gatherings of celebrities from coast to coast. Those gay bon vivants admire the Radiobar No. 50-9 because of the modern accent in its exquisitely fluted cabinet because of the bright display of the leak-proof bar and the convenience it brings. In your home, compact Radiobar No. 50-9 similarly will contribute this modern, attractive air. With its lovely Butt Walnut panels and beautifully matched Oriental Walnut tops and sides—lacquered to resist alcohol—with its glassware service for 6 and the 6-tube 1938 Philco Radio with Philco High-efficiency aerial, built-in Foreign Tuning system, Glowing Beam station finder. Radiobar No. 50-9 is the inspiration for a new standard of entertainment. Closed 45 $\frac{1}{4}$ " high, 29" wide, 13 $\frac{3}{4}$ " deep. Bar opens to 50 $\frac{5}{8}$ ".



BEAUTIFUL New Radiobar Model No. 60-7X speaks luxury for a room—dramatically imparts within it a rare atmosphere of good living and warm hospitality. Panels of rich Butt Walnut, Striped Walnut and Stump Walnut, with Satinwood inlay, curve gracefully to achieve a magnificent design in the striking Neo-Classic manner. To see it in the home is to mark the owner as a connoisseur of superb furniture. Complete leak-proof chromium bar with gloss-ware service for 8 and bar accessories. Large reserve stock compartment with lock and key. Cabinet is lacquered for alcohol resistance. Equipped with 6-tube 1938 Philco Radio, Cone-Centric Automatic Tuning, American and Foreign receiver and the famous Philco High-efficiency aerial. Three-Point Tone Control. Closed the model is 46 $\frac{3}{4}$ " high, 30" wide, 14 $\frac{3}{4}$ " deep. The bar opens to 53 $\frac{1}{2}$ " wide.

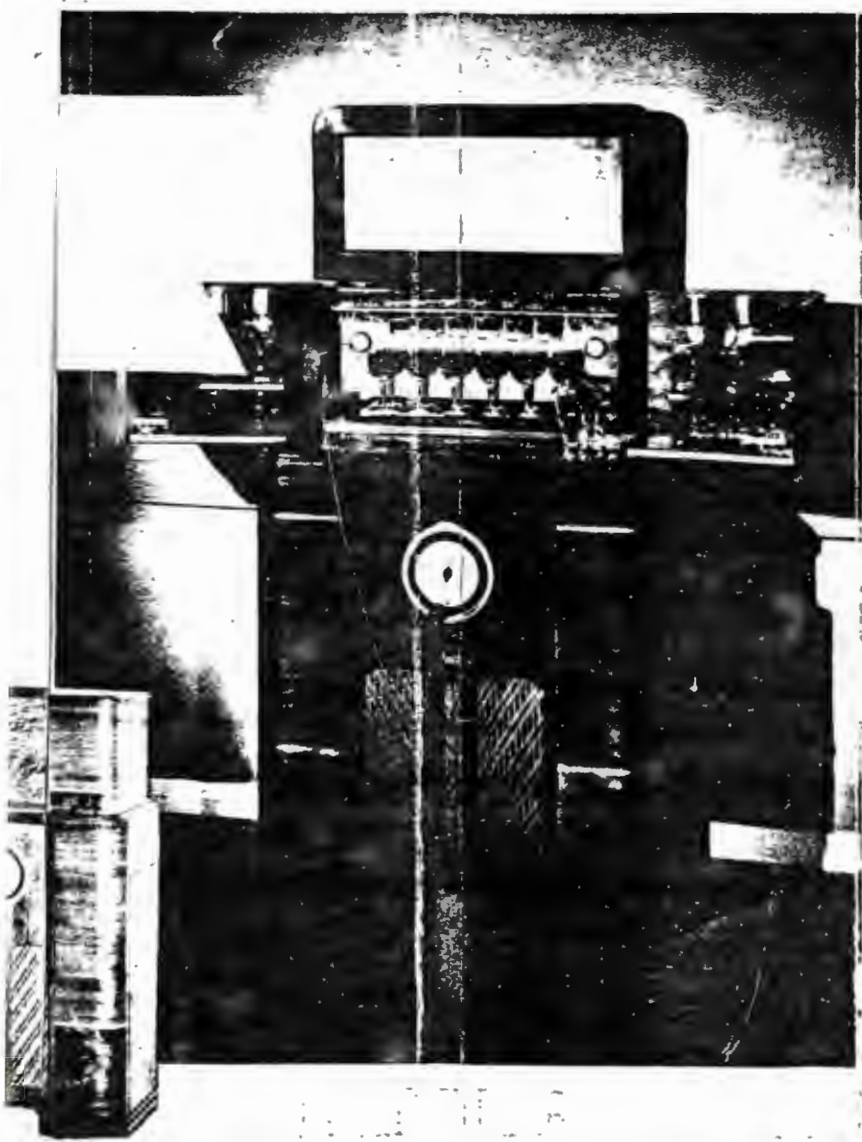


RADIOBAR COMPANY OF AMERICA

7100 McKinley Ave., Los Angeles. Erie and K Sts., Philadelphia.

Prices include radio and complete bar, less High-Efficiency aerial. Subject to change when necessary.

Backgrounds created by W. and J. Sloane. Cecil Rhodes, decorator.



When closed and placed in end-table fashion beside a lounging chair, Radiobar 40-10, the Armchair model, is an attractive, ingeniously compact piece of furniture that enhances the appearance of the loveliest room. Open, it is a merry suggestion for a gay gesture of hospitality, with its sparkling, leak-proof bar and complete glassware service for 4 persons. There is generous tray space, ample room for a seltzer water bottle, gingerale bottle, and quart size liquor bottle. Equipped with world famous 5-tube 1938 Philco radio with High-efficiency aerial and built-in Foreign Tuning System. Two Tuning Ranges with famous Glowing Beam Station Finder. The alcohol-resisting lacquered cabinet is of highly figured Oriental Walnut and Butt Walnut inlaid with Satinwood to give a striking contrast.

Radiobar fully covered by patents



THE ARMCHAIR MODEL.



WITH THE OLD WAY

Come out of the kitchen! And bring your guests with you . . . into the delightful modern mode of entertaining that centers your group exactly where you want it—around the new, compact Radiobar with its famous 1938 Philco Radio.



WITH THE NEW!



THE BAR contains complete service facilities. Above is the chromium-fitted, leak-proof bar of Radiobar 60-7X. 8 old-fashioned, 8 ten oz. high-balls, 6 five oz. wine, 6 cocktail stemware, 4 whiskey jiggers, 1 glass ice bowl, 1 glass refuse bowl, ice tongs, muddler combination, 4 special liquor decanters, 2 bar lights and a plate glass etched mirror. Ample room for mixing space, reserve stock compartment equipped with lock and key. All cabinets lacquered for alcohol resistance.

THE RADIO in all Radiobar models is the new 1938 Philco, offering World Famous Philco combination of Power, Selectivity, Tone and Range—the finest American and Foreign reception. Radiobar models Nos. 40-10 and 50-9 are equipped with Glowing Beam Station Finder with Philco Color Dial. Radiobar No. 60-7X is equipped with ingenious Cone-Centric Automatic Tuning Dial, Concert Grand Speaker, Pentode Audio System, 3-point Tone Control, Two-Speed Vernier Tuning.



New Cone-Centric Automatic Tuning. One silent turn and **CLICK** . . . there's your favorite station!

An enlarged leak-proof bar and a complete line of accessories in the 1938 Radiobar, brings magically to your fingertips the secret of convenient, luxurious entertainment.

Presented in a series of new, distinguished cabinet designs, lovely Radiobar, with its world famous 1938 Philco radio, complements the most distinguished room decorative scheme.