

LESSONS
IN
WIRELESS
TELEGRAPHY

25c



The John Cre

5
LESSONS

IN

WIRELESS TELEGRAPHY

A SYSTEMATIC ELEMENTARY COURSE IN THE
PRINCIPLES OF WIRELESS TELEGRAPHY
AND THE ELECTRICAL LAWS
UPON WHICH IT DEPENDS

BY

A. P. Morgan

PUBLISHED BY

COLE & MORGAN

Publishers of The Arts and Sciences Series

P. O. Box 1473

NEW YORK CITY

ENT
ASPERMOL
VYAGRU

COPYRIGHT 1912

BY

COLE & MORGAN

INTRODUCTION

THIS little book has been brought forward in order to supply the demand for a systematic elementary course in the principles of wireless telegraph apparatus and the electrical laws upon which it depends.

Many operators, both amateur and professional, although perfectly well able to send and receive messages, do not thoroughly understand the rudimentary theory of the instruments.

It is readily realizable that it is quite impossible to enter into all the engineering details in a book of this size, but at the same time it has been possible to present a very comprehensive treatise of the subject and embody sufficient material to give a thorough grounding in the subject.

In order to avoid repetition and confusion and to make each instrument or principle which has been discussed stand distinctly by itself, the text has been divided into thirty lessons following in their arrangement, as far as has been possible, the logical sequence.

For the same reason, and also because of lack of space all details pertaining to the actual maintenance and adjustment of the instruments has been embodied in another book called "The Operation of Wireless Telegraph Apparatus."

537.51

R207

171131
381915

LESSON ONE.

MAGNETISM.

Natural Magnets. Artificial Magnets. Magnetic Field of Force.

IT was known to the ancients that certain hard, black stones, an iron ore consisting of iron and oxygen found notably at Magnesia in Asia Minor, possessed the power of attracting small pieces of iron or steel. This almost magic attribute of the stone was early turned to account in navigation and secured for it the name of Lodestone (leading-stone) because of its remarkable property of pointing north and south when suspended by a thread. The name of magnet (magnes lapis) was also given to these stones.

Magnetism is the peculiar property occasionally possessed by certain bodies (more especially by iron and steel) whereby they attract or repel one another.

If a piece of hard iron or steel be rubbed with a lodestone it will be found to have also acquired the properties of the stone. If hung up by a thread it will point north and south, will attract light bits of iron and if dipped into iron filings will cause the latter to cling in two small tufts near the ends with few, if any, near the middle.



FIG. 1.

Lodestone which has been Dipped in Filings to show Poles.

This indicates that the attractive power of the magnet is concentrated in two opposite parts. These parts are called the *Poles*. The line joining the poles is the *Magnetic Axis*.

Artificial Magnets are those made from steel by the aid of a lodestone or some other magnetising force. The

principle forms of artificial magnets are the *Bar* and *Horseshoe*, so called from their shape.

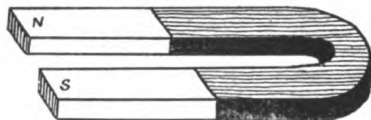


FIG. 2.
Bar and Horseshoe Magnet.

If a magnet (either artificial or natural) is suspended by a thread so that it may swing freely, and a second magnet held in the hand is presented successively to the two poles of the first, it will be observed that one pole is *attracted* and swings toward the magnet held in the hand, but that the other is *repelled* and *swings away*.

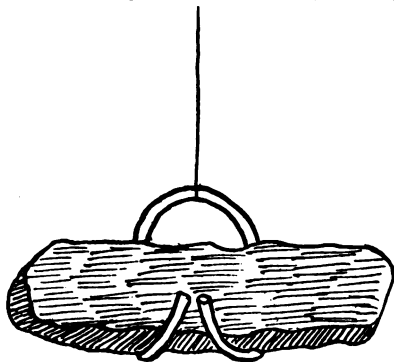


FIG. 3.
Lodestone suspended from thread so as to point North and South.

Furthermore, if the poles of the suspended magnet are marked so as to easily be identified it will be found that it is always the same pole that swings towards the north. There would therefore appear to be two kinds

of magnetism or at least two kinds of magnetic poles. The end swinging toward the north is termed the "north seeking pole" and the opposite end called the "south seeking pole." In common parlance they are simply termed the North and South poles. It is usual to mark the North Pole with the letter N.

There is no known insulator of magnetism: it passes through everything. A *magnetic substance* is one which offers little resistance to the field of force.

Magnetism flows along certain lines called *Lines of Magnetic Force*. These lines always form closed paths or circuits. The region in the neighborhood of a magnet through which these lines pass is called the *Field of Force* and the path through which they flow is called the *Magnetic Circuit*.

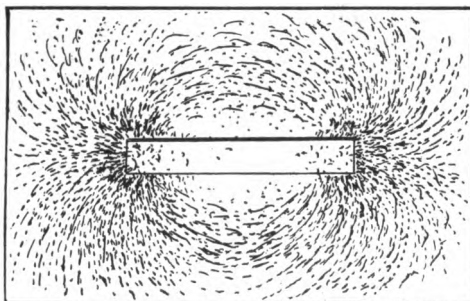


FIG. 4.

Lines of Force around a Bar Magnet.

The paths of the lines of force can be demonstrated by placing a piece of paper over a bar magnet and then sprinkling iron filings over the paper which should be jarred slightly in order that the filings may be drawn into the magnetic paths. The filings arrange themselves in curved lines, diverging from one pole of the magnet and meeting again at the opposite end. The lines of force are considered as extending outward from the North pole of the magnet, curving around through the air to the South pole and completing the circuit back through the magnet.

The phenomena of magnetism and its laws form a very important branch of the study of electricity, for they play a part in the construction and operation of almost all electrical apparatus.

LESSON TWO.

MAGNETIC INDUCTION.

IN 1831 Michael Faraday, the great physicist, made the valuable discovery that electric currents are induced in a closed circuit by moving a magnet near it or vice versa, by moving the circuit across the field of force,

If a coil of insulated wire be connected in circuit with a sufficiently delicate galvanometer (a galvanometer is an instrument for detecting feeble electric currents) and a bar magnet suddenly plunged into the hollow of the coil as shown in the illustration, a momentary current will be indicated as flowing through the galvanometer *while the magnet is being moved* in the coil. If the magnet is then rapidly pulled out of the coil another momentary current will be observed to flow in the *opposite direction from the former*.

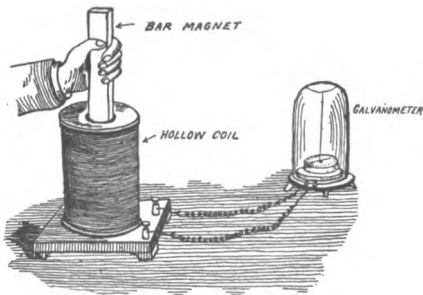


FIG. 5.
Magnetic Induction.

So long as the magnet lies motionless in the coil it induces no currents. The field of force in the neighborhood of a magnet grows weaker as the distance from the magnet increases. When the magnet is plunged into

the coil, the strength of the magnetic field in the vicinity of the coil grows stronger due to the approach of the magnet, and when it is withdrawn the field becomes weaker.

Currents are only induced in the coil when the magnet is moving, or in other words when the strength of the magnetic field is *changing*, either increasing or decreasing.

The currents generated in the coil are called *induced currents*. The action of the magnetic field in producing induced currents is termed *Induction*.

LESSON THREE.

PRIMARY CELLS. SECONDARY CELLS.

IF a piece of zinc is dipped in dilute sulphuric acid, the zinc will be attacked by the acid and replace hydrogen in it, the hydrogen appearing as bubbles on the zinc and passing off as a gas.

If the zinc is connected by means of a wire, W, with

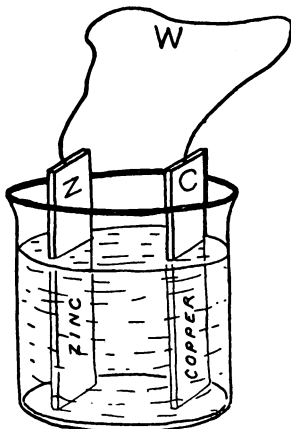


FIG. 6.
Simple Voltaic Cell.

a strip of copper, C, dipping in the same solution, the zinc will still continue to dissolve but the hydrogen

bubbles will now form on the surface of the copper strip as well as on the zinc. It will be found that the wire W becomes heated. If the copper and zinc are connected to a galvanometer it will show the presence of an electric current passing through the circuit. The cell may be considered as a sort of chemical furnace in which fuel is burned to drive the current. The zinc is the fuel. The copper is merely present to "pick up" the current and takes no part chemically.

If a number of such simple cells are properly united, the zinc of one being joined to the copper of the next and so on, a *battery* is formed. The current flows from the copper, called the *positive* pole, through the wires (when they are joined) to the zinc or negative pole and back to the copper through the solution.

The electricity generated by the cells exerts a certain pressure or tendency to pass through the wires. This tendency is called the *potential*. The potential is measured in *volts*. The potential (also called the electromotive force) in the case of the Voltaic Cell just described is 1.07 volts. If the copper strip is replaced with one of graphite or carbon, the voltage will rise to 1.73 volts.

After a cell has been in action for a short time, the positive plate (copper or carbon, as the case may be) becomes covered with a film of hydrogen. The cell is then said to be *polarized*. The film of gas bubbles partially shields the plate from contact with the liquid. When the plate becomes in this condition, the current is much feebler than when it is clear.

The most effective way of removing the hydrogen is to add some chemical to the sulphuric acid solution which will combine chemically with the hydrogen as soon as it appears. The usual substance is *bichromate of potash*. The voltage of the battery will rise to 2.2 volts and the polarization be stopped when bichromate of potash is added. The bichromate of potash enters into chemical action with the sulphuric acid and forms *chromic acid*. Such cells are usually termed chromic acid cells.

One of the principal disadvantages of a cell such as that just described lies in the fact that the zinc is continuously

consumed whether the cell is in action or not and in order to prevent its rapid waste must be lifted out of the solution and washed each time after using.

Various methods have been devised for overcoming this objection, the most prominent of the resulting cells being known as the Fuller, Gordon and Edison-Lalande Cells.

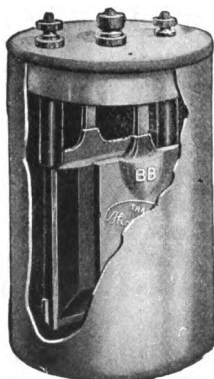


FIG. 7.
Edison Cell.

The liquid excitant of the Gordon and Edison-Lalande cells is a strong solution of sodium hydroxide. The positive pole of these cells is a block of compressed copper oxide and the negative a pair of zinc plates. In the Gordon cell the positive is enclosed in a porous chamber.



FIG. 8.
Dry Cell.

One of the best known forms of cell is the dry cell. It consists of an outer shell of zinc forming the negative electrode and a central rod of carbon as the positive. The active agent of the cell is a paste composed principally of sal ammoniac lining the interior of the zinc shell. The depolarizing agent of the cell is manganese dioxide mixed with crushed carbon and packed tightly around the carbon rod. The cell is not as its name implies perfectly dry inside, but the chemicals are in paste form. The cell is sealed at the top by a bituminous compound making the cell air tight and portable. Dry cells are only successful for intermittent work, that is, where they are not required to deliver a heavy current continuously. They deteriorate after long standing because the moisture evaporates. Dry cells, however, are a very convenient source of current where the demand is not too great and portability is desired.

The cells so far described are all of the type known as *primary cells*.

SECONDARY CELLS.

THE storage cell or secondary cell is made up of plates of lead, or an alloy of lead, cast in the form of a grid or framework of bars. The spaces formed in

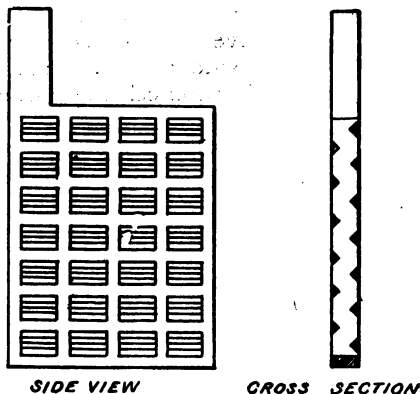


FIG. 9.

A Storage Battery Grid.

the plate by the little bars are filled with a paste of lead oxide. The paste for the positive plates are made of red lead while litharge is used for the negatives.

The positive and negative plates are placed alternately in a bundle with a wooden or rubber separator between, there always being one more negative plate than positive. The negative plates are all connected in parallel at one end of the cell by means of lead connecting strips. The positive plates are connected at the other end. The plates are placed in a jar, usually glass or hard rubber, and covered with a dilute sulphuric acid solution.

The storage cell is then connected to a dynamo, the positive pole of the cell being connected to the positive pole of the dynamo and the current allowed to flow through until the plates are *formed*, that is to say, until the paste in the positive changes to *peroxide of lead* and that in the negative to *spongy lead*. When the cell is disconnected it will give out a current of its own lasting until it becomes *discharged*. The charging and discharging must be repeated several times before the cell really becomes efficient.



FIG. 10.
Storage Cells.

What is effected in the storage cell is really the storage of chemical energy and not the storage of electricity, for, properly speaking, the energy is put into the form of chemical *affinity* and there is in reality no more electricity actually *in the cell* at the end of a charge than there is when the cell is discharged.

The storage battery is the most convenient means of absorbing electrical energy at one time or place and using it at another time or place.

Storage cells are very often employed in wireless stations for emergency purposes so that in case the dynamo supplying current fails the station will not be thrown out of operation.

The voltage of a storage cell is about two volts.

LESSON FOUR.

ELECTRIC CURRENTS.

The Units of Measurement. Direct and Alternating Currents. Ohm's Law.

ELECTRIC Currents may be divided into two classes known as *direct* and *alternating* current. Either one may be measured or qualified by two electrical units called the *Ampere* and the *Volt*. The volt may be explained by likening it to the "unit of pressure" of the current, while the ampere measures the unit rate of current flow. For example, in the case of water the voltage corresponds to the pressure in pounds while the amperage would indicate the rate of water flowing.

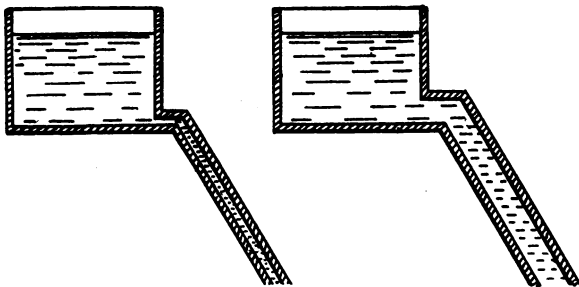


FIG. 11.

Hydraulic Analogy between Voltage and Amperage.

The accompanying sketches show graphically the analogy between the voltage and amperage of an electric cur-

rent and the pressure and volume of a stream of water. In the first illustration a tank is shown at a high elevation from which a small pipe leads. The voltage or *pressure* in such a pipe would be high in comparison with that in a pipe leading from a lower tank.

In the second illustration the pipe leading from the tank is much larger than that from the first and consequently the amperage or volume flowing is greater in comparison. From this it may be readily seen that every circuit through which a current is flowing must exhibit both quantities, but that even though one value may re-

The unit of electrical work or energy is the *Watt*. Seven hundred and forty-six watts constitute an electrical horse-power. The number of watts is indicated by the voltage times the amperage. Thus the amount of energy in a circuit in which 50 amperes at 100 volts pressure are passing is 50×100 or 5,000 watts.

The *Coulomb* represents the quantity of electricity flowing in a circuit where the rate of flow is one ampere per second.

In order to properly indicate comparative amounts of energy the element of time must also be taken into consideration. One watt passing for one hour is a *watt-hour*. Seven hundred and forty-six watts passing for one hour or one watt passing for seven hundred and forty-six hours is a *horse-power hour*.

The instruments used for measuring the amperage and voltage of a circuit are called respectively the *ammeter* and the *voltmeter*. That used for registering watt-hours is called the *integrating watt-meter*.

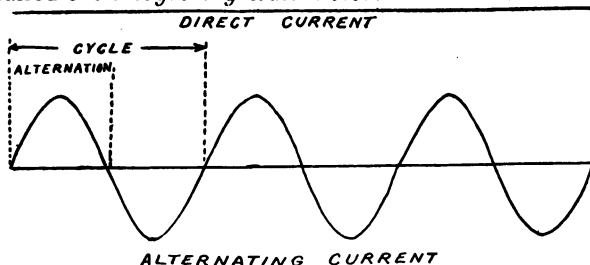


FIG. 12.

Diagram Showing Alternating and Direct Current.

Direct current is current that passes or flows in one direction only. The current of all primary and secondary cells and of certain forms of dynamos is direct.

Alternating current is current that repeatedly reverses its direction of flow. A direct current may be represented by a straight line. An alternating current is shown by a wavy line crossing and recrossing a straight line. The current gradually rises from zero to a maximum and then dies away. It does not stop at this point however, but starts to rise again, this time flowing in a reverse direction. After reaching a maximum it dies away again and the cycle is repeated. From *a* to *c* represents a *cycle* and from *a* to *b* an *alternation*. Alternating currents usually have a *frequency* of 30, 60 or 120 cycles per second. Sixty is the most common frequency. Many wireless telegraph stations now employ currents having a frequency of 500 cycles.

Ohm's Law.

MENTION has been made above of certain electrical magnitudes, namely, voltage or electromotive force and amperage or strength of current. These bear an important relation in determining a property of an electric circuit called *resistance*.

No conducting body possesses perfect electrical conductivity, but presents a certain amount of obstruction or resistance to the passage of electricity. The practical unit of resistance is the Ohm. It is represented by the resistance offered to an unvarying electric current by a column of mercury at the temperature of melting ice, 14.4521 grams in mass, of a constant cross sectional area and of the length of 106.3 centimetres.

The resistance of a conductor is proportional to its length, that is, provided two conductors are made of the same material and of the same diameter and one is twice as long as the other, the resistance of the longer will be twice that of the shorter conductor. The resistance is inversely proportional to the cross sectional area, which is to say that a conductor of smaller cross section has a greater resistance than one of larger section.

The laws of resistance are conveniently expressed by the following formula called Ohm's Law.

$$C = \frac{E}{R}$$

where E=electromotive force in volts.

C=current in amperes.

R=resistance in ohms.

If two factors are known, the third can be found by substitution.

LESSON FIVE.

ELECTROMAGNETISM.

The Electromagnet. The Solenoid.

IF a current of electricity is passed through a copper wire, the wire will attract to itself iron filings, etc., as long as the current continues to flow. There is then a magnetic field around the wire. As soon as the current is shut off the filings drop away because the field immediately disappears with the cessation of the current.

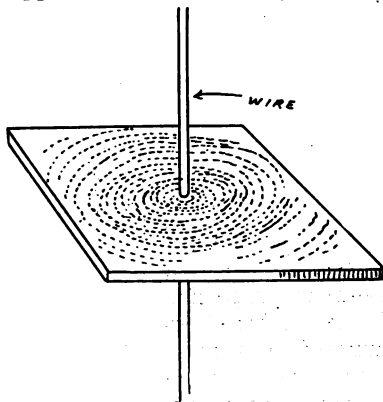


FIG. 13.

Magnetic Phantom about a Wire Carrying Current.

The lines of force flow around the wire in a circle. The circular lines of the field of force surrounding a

straight wire may be shown by passing a wire vertically through a hole in the centre of a horizontal card. Iron filings are sifted over the card and a strong current passed through the wire. On tapping the card gently, the filings near the wire set themselves in concentric circles round it.

The creation of a magnetic field by a conductor in its own neighborhood when carrying a current of electricity is one of the most important phenomena of electrical science.

Electrical energy must be expended in producing a magnetic field. When a current of electricity is turned on in a wire the magnetic field *grows* around the wire, some of the energy of the current being used for the building process.

This reactive effect of the surrounding magnetic field is one reason why electric currents do not instantly rise to their full value.

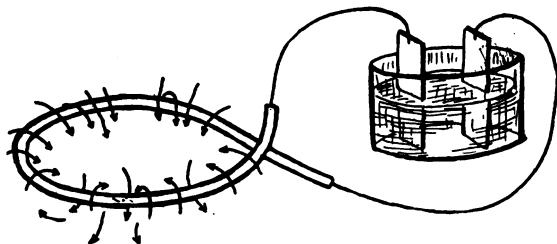


FIG. 14.

Diagram showing how Lines of Force Form about a Loop of Wire.

If a wire is connected to a battery or some other source of electric current and a portion of the circuit twisted so as to form a loop, the entire space enclosed by the loop will be a magnetic field and possess magnetic properties.

By forming a wire into a spiral coil the combined effect of each individual turn is concentrated in a small space and a powerful field of force is produced. If the coil is provided with an iron core, the lines of force can be concentrated and will exercise a very powerful attractive effect upon any neighboring masses of iron or steel. Such a coil is called an *electromagnet*. A hollow coil without any core is called a *solenoid*.

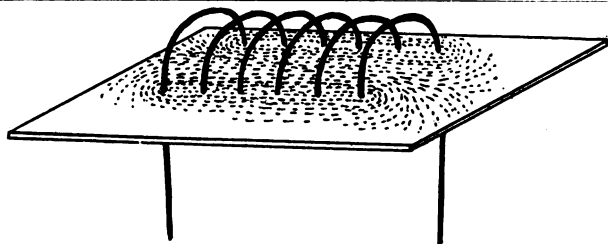


FIG. 15.

Magnetic Phantom about a Coil of Wire.

Solenoids and electromagnets play a very important part in the construction of most electrical instruments.

The strength of an electromagnetic coil is proportional to its *ampere turns*. The ampere turns of a coil are obtained by multiplying the number of amperes flowing through the coil by the number of turns of wire composing it.

LESSON SIX.

DYNAMO ELECTRIC MACHINERY.

The Dynamo. The Alternator. The Motor.

THE discovery of the induction of currents in wires by moving them across a magnetic field led to the construction of electrical machines, called dynamos, to generate current in place of batteries.

The dynamo is perhaps the most important piece of electrical apparatus there is for it is the source of ninety-nine per cent. of all the electricity now in use. It is practically necessary in any case where a considerable quantity of electricity is used to have a dynamo on the spot or else bring the currents over a wire from some supply station where dynamos are kept running.

The operation of a dynamo is dependent upon current induction. It contains a system of closed conductors revolving in a magnetic field in such a way as to continuously vary the number of lines of force threading among them.

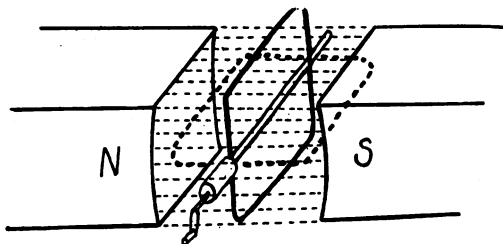


FIG. 16.

Diagram showing the principle of the Dynamo.

The illustration shows the ideal simple dynamo, which consists of a loop of wire arranged to revolve between the poles of a permanent magnet in the direction of the arrow and around a horizontal line as an axis. The lines of magnetic force (represented by the fine straight lines) pass across from N to S as indicated. When in the position shown, the coil of wire encloses the largest possible number of lines of magnetic force. When it has revolved ninety degrees or a quarter of a turn as shown by the dotted lines, the lines of force will be parallel to the plane of the coil and none will pass through. During this quarter of the turn the number of lines of force has been decreasing. During the next quarter of a turn the lines will increase again, but will this time pass through from the opposite side of the loop. This decrease and increase of the number of lines of force passing through the loop generates therein a current of electricity. The same process is repeated during the next half of a revolution. However, since the lines of force flow through from opposite sides of the coil every half revolution, the current reverses twice during the same period.

In the illustration the loop is represented as forming a complete closed circuit in itself. In order to draw any current for external use some method of establishing connection to the terminals of the coil must be had. This is furnished by two circular rings called *collector rings*. The little strips of metal or carbon employed to form contact with the rings are called *brushes*.

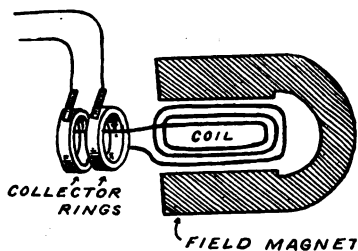


FIG. 17.

Simple Alternator.

Such a machine, so equipped will deliver alternating currents and illustrates the principle of the alternating current dynamo or *alternator*.

With the aid of a device called a *commutator* and consisting of a ring split in sections as shown in the illustration, all the successive current impulses may be turned in the same direction and the current made direct.

In practice many coils of wire wound around an iron core called the *armature*, the purpose of which is to concentrate the magnetic lines of force, are made to revolve in a powerful *field* between the poles of adjacent electromagnets. Electromagnets are used because they are capable of producing a stronger magnetic field than magnetized bars of steel. The electromagnets used for this purpose are called *field magnets*. The central iron portion upon which the revolving coils are wound, called the *armature*, is usually built up of a number of thin sheets of soft steel called armature disks or laminations.

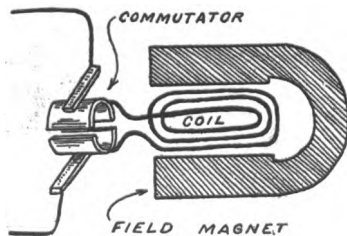


FIG. 18.

Simple Dynamo showing Commutator.

The modern armature is very complex. A simple coil such as those shown in Figs. 17 and 18 will not yield a steady current for twice in each revolution the electromotive force dies away to zero. The coils of large dynamos are grouped so that some of them are always active.

There are three general methods of supplying current to the field magnets of a dynamo, known as the *series*, *shunt* and *compound* windings.

The series dynamo is arranged so that the coils of the field magnets are in series with those of the armature.

In the shunt dynamo, the coils of the field magnet form a shunt to the main circuit and being made of many turns of thin wire, draw off only a small fraction of the whole current.

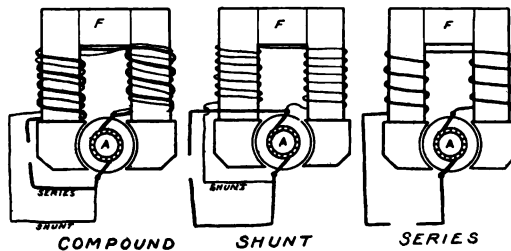


FIG. 19.

Diagram of Dynamo Field Windings.

The compound dynamo is partly excited by shunt coils and partly by series coils.

Each variety of dynamo winding has a certain ad-

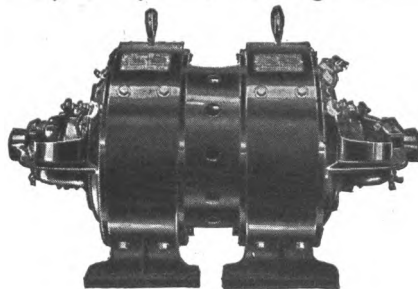


FIG. 20.

Motor Generator.

vantage depending upon the condition of use.

In the case of alternating current dynamos, the field magnets are sometimes supplied from a separate dynamo called an "exciter." In other cases the dynamo is provided with two sets of windings, one connected to a commutator producing a direct current which excites the field coils and the other connected to a set of rings and supplying the alternating current.

In case a supply of either direct or alternating current is available and it is desirable to change the supply from direct to alternating or vice versa, it may be accomplished by employing a *Motor-Generator*. A motor-generator consists of an electric motor operating from the source of current supply on hand and driving a dynamo which supplies current of the kind desired.

A motor is exactly the reverse of a dynamo. If a current of electricity is passed into a dynamo, the armature will be dragged around by the mutual action of the currents flowing in the copper conductors and the magnetic field in which they lie. Such a device constitutes a motor and may be employed to do useful work.

Motors are classified as alternating and direct current machines accordingly as they are built to operate on either kind of current.

LESSON SEVEN.

THE INDUCTION COIL.

THE Induction Coil is an apparatus for producing currents of a very high electromotive force. It consists of a helix of large, insulated wire surrounding an iron core, and this again surrounded by a second coil consisting of many thousand turns of very fine wire carefully insulated. The inner or primary coil is connected in series with a battery, the circuit also including a device called an *interrupter*. The object of the interrupter is to make and break the primary circuit in rapid succession. Every time the current is turned on in the primary circuit, the primary coil creates a magnetic field which induces a current in the secondary in accordance with the laws of induction.

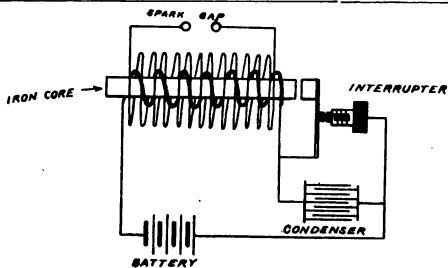


FIG. 21.
Diagram of Induction Coil.

Likewise at every "break" in the circuit caused by the interrupter, the lines of force disappear and a second current impulse is induced in the *secondary* coil. As the number of lines of magnetic force created and destroyed at each make and break is the same, the two electromotive impulses in the secondary are equal. By adding a *condenser*, however, the current at "make" is caused to take a considerable fraction of time to grow, while at "break" the cessation is instantaneous in comparison. The rate of "cutting" of the lines of force is very much more rapid at "break" than at "make" therefore. The currents at "break" manifest themselves as a brilliant torrent of sparks between the ends of the secondary wires when they are brought near enough together.

The central iron core around which the coils are wound is for the purpose of increasing or concentrating the number of lines of force that pass through the coils. Magnetic lines flow more easily through iron than through air and so prefer that path. It is made up of a bundle of fine iron wires in order to avoid induced currents which would be set up in the iron were it a solid mass and so retard its rapidity of magnetization or demagnetization as to hamper the efficiency of the coil.

LESSON EIGHT.

THE PRINCIPLE OF THE TRANSFORMER.

THE transformer is a device for raising or lowering the electromotive force of an alternating current. In principle it consists of two insulated coils of wire

called the *primary* and the *secondary* wound around an iron ring as shown in the illustration.

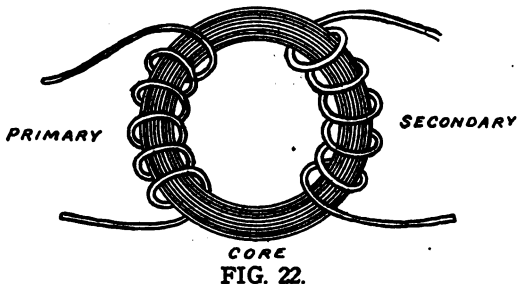


FIG. 22.

Diagram showing the principle of a Transformer.

If the primary coil is connected to a source of alternating current it will rapidly magnetize and demagnetize the iron ring. The magnetic lines thus created will pass through the secondary coils setting up induced currents.

The ratio of the electro-motive force of the induced current to that of the primary current is in direct proportion to the ratio of the number of turns in the two coils. For example, if the secondary contains twice as many turns as the primary, its electro-motive force will be twice as great.

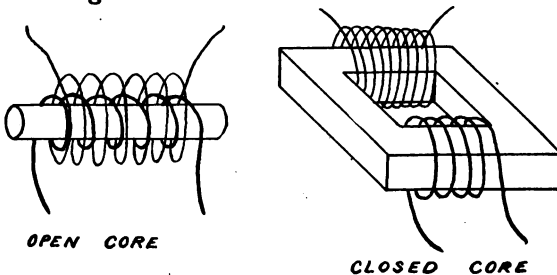


FIG. 23.

Open and Closed Core Transformers.

Transformers are of two general types, the "open" core and the "closed" core. Closed core transformers are the most efficient. The open core transformer is similar in construction to an induction coil, the core be-

ing a straight bar, while that of the closed core machine is usually in the form of a hollow square or rectangle.

In practise, the cores of transformers are built up of *laminations*, usually of thin, soft sheet iron strips piled together and shaped so as to constitute a closed magnetic circuit of rectangular shape in order to avoid constructional difficulties incurred in making a ring.

LESSON NINE.

THE LEYDEN JAR AND CONDENSER.

THE Leyden Jar, called after the city of Leyden, Holland, where it was invented, is a form of *condenser* consisting of a glass jar coated up to a certain height inside and out with tinfoil.

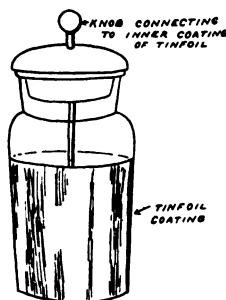


FIG. 24.

Leyden Jar.

A Leyden jar may be *charged* by holding the rod to the prime conductor of an electric machine, the outer coating being held in the hand. If a piece of wire connected to the outer coating is then brought near the rod a brilliant snapping spark will pass across the space.

Any two conductors, separated by an insulating medium termed the dielectric, constitute a condenser and possesses the property of receiving and retaining an electric charge.

If a charged condenser or Leyden jar is discharged slowly by allowing the electricity to pass through a high

resistance conductor the flow of current increases in strength at first and then gradually dies away.

If, however, the condenser is discharged through a coil of wire of one or more turns, the discharge consists of a number of excessively rapid oscillations or surgings. The first rush of current serves to more than empty the condenser and charges it the opposite way, then follows a reverse discharge, which also oversteps itself and charges the condenser the same way as the first and so on, each successive oscillation being weaker than the one before until the discharge dies away as in Fig. 36. The discharge of a condenser under such conditions consists of a number of successive sparks in reverse directions.

The ability of a condenser to receive and retain an electrical charge is termed the *capacity* and is measured by a unit called the *farad*. The farad is so large a quantity, however, that it is never met in practise and for convenience the *micro-farad* which is one millionth of a farad has been adopted.

A condenser of one farad capacity is such as would be raised to a potential of one volt by a charge of one coulomb of electricity.

The capacity of the condenser is dependent upon the thickness and nature of the insulating medium or *dielectric*. The quality of a *dielectric* which decides the capacity of a condenser in which it may be a part is called its *specific inductive capacity*. The following table shows the relative specific inductive capacity of several materials, air being the standard:

TABLE OF SPECIFIC INDUCTIVE CAPACITIES.

Substance.	Constant.
Air	1.00
Paraffin	1.68—2.47
Petroleum	2.02—2.19
Gutta Percha	3.00
Hard Rubber	2.28
Mica	6.64
Glass	6.72—7.38

LESSON TEN.

THE ETHER AND THE ELECTROMAGNETIC THEORY OF LIGHT.

ALL space is filled with a weightless, invisible medium called Ether. It is the substance with which the universe is filled, it reaches to the stars and through the very earth itself.

It has been known for some time that light consists of vibrations or motions in the ether. In 1867, Clerk Maxwell offered the theory that these light waves are not merely mechanical motions of the ether, but are electrical undulations. According to this theory, the phenomena of electro-magnetism and the phenomena of light are all due to certain modes of motion in the ether.

Twenty years later, Heinrich Hertz discovered convincing proofs of Maxwell's theory and succeeded in producing electro-magnetic waves in such a manner that they possessed the same properties, traveled at the same speed, and were capable of being reflected, refracted, polarized, etc.

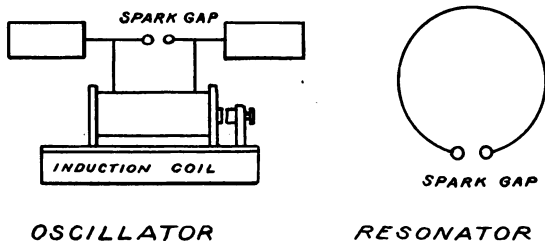


FIG. 25.

Hertzian Oscillator and Resonator.

Hertz employed an apparatus consisting of two metallic balls connected by metal rods to two metal sheets. The two balls were also connected to the secondary terminals of an induction coil. This apparatus comprised the *oscillator* and served to create the electro-magnetic waves.

In order to detect the waves, he employed a *resonator* consisting of a circle of wire having in it a minute spark gap capable of fine adjustment.

As soon as the coil is set in operation a spark snaps across the gap and sets up a temporary conducting path for the surgings that follow. Each spark sent by the coil across the gap consists of a dozen or so *oscillations*, each lasting less than a millionth of a second.

Then if the resonator is placed a few feet away from the oscillator and turned broadside on to the oscillator, it will be found that small sparks jump across the gap. Hertz employed various arrangements for reflecting and polarizing the waves and definitely proved that their nature is the same as that of light.

LESSON ELEVEN.

ELECTRIC WAVES.

WHEN a Leyden jar discharges under the conditions set forth in one of the previous lessons, portions of the energy of the current or discharge are thrown off from the conductor and do not return to it, but go traveling on in space.

If a current is sent through a circuit, as the current increases, the magnetic field also increases, the magnetic lines enlarging and spreading outward from the conductor like the ripples on a pond. If the current is decreased, the magnetic lines all return back and close up upon the conductor, the energy all being re-absorbed into the circuit.

If electrical oscillations of extreme rapidity such as those generated by a condenser discharge are substituted for a current slowly rising and falling, part of the energy radiates off into the ether as *electromagnetic waves* and only a part returns back.

The discharge of a Leyden jar or condenser only oscillates when the circuit contains a certain amount of *capacity* and *inductance* in proportion to the resistance of the circuit.

Inductance is the property of a circuit by virtue of which lines of force are developed around it. Circuits containing a certain amount of inductance, capacity and

resistance tend to oscillate electrically at a certain frequency.

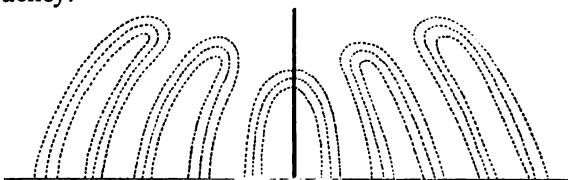


FIG. 26.
Electric Waves.

The electromagnetic waves thrown off by the aerial system follow the contour of the earth and so may cross mountains or travel anywhere. The waves emitted by the ordinary wireless station, making use of an aerial and a ground are *half* waves terminating in the earth as shown in the illustration. In passing over the earth they are accompanied by ground currents which waste a certain amount of their energy in overcoming ohmic resistance and so reduce the intensity of the waves. For this reason propagation is always the best over water or moist earth whose resistance is low.

A further peculiar weakening of the waves due to the absorption taking place in the air during sunlight. The difference between the signals in the day and their strength at night is very marked, being much stronger in the later case.

LESSON TWELVE.

PRINCIPLES OF WAVE TELEGRAPHY.

WIRELESS Telegraphy as practiced to-day is merely a method of setting up electromagnetic waves in the ether and then detecting their existence at a distant point. It may be divided into four distinct and individual operations, namely:

1. The generation of electrical oscillations.
2. The transformation of electrical oscillations into electrical waves.

3. The transformation of electrical waves into electrical oscillations.

4. The detection of the electrical oscillations.

We have already learned how electrical oscillations may be generated by the discharge of a Leyden jar or a condenser. In order to perform the first two operations named above, it is therefore merely necessary to arrange a condenser in such a way that it is most effective.

The induction coil or transformer is employed to charge the condenser because the currents of these instruments are much more powerful than those of a static electric machine. The induction coil is connected to a set of batteries and a key so that the periods during which the current is on and off may be controlled at will by the pressure of the fingers.

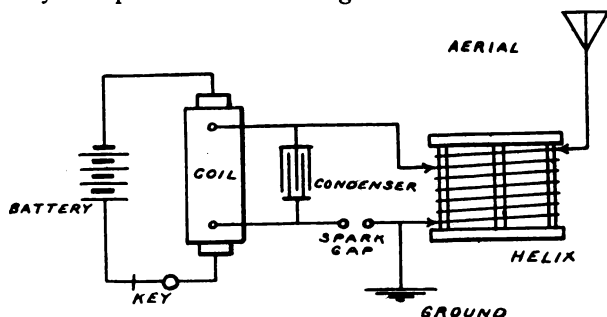


FIG. 27.

Diagram of Wireless Transmitter.

The secondary of the coil is connected to a battery of Leyden jars or a condenser. The fact was mentioned above that a certain amount of inductance in the circuit is necessary for the production of electrical oscillations. This is furnished, or at least the greater part, by a device called a helix which consists of a coil of heavy wire wound around a suitable framework.

The spark discharge takes place across a device called a spark gap.

When the key is pressed, the high potential currents of the induction coil charge the Leyden jar or condenser and cause it to discharge through the helix and across the

spark gap. High frequency oscillations are immediately created in this part of the circuit. The spark gap, condenser and that part of the helix included, constitute the *closed circuit*. The electromagnetic waves thrown off by such an oscillatory system would not be very far reaching in their effects because the disturbances would be confined to the immediate neighborhood of the apparatus, so recourse is had to the aerial and ground. The *aerial* consists of a network of wires elevated high in the air. The *ground* or earth connection is simply a large metal plate buried in moist earth or thrown into the sea. By connecting the aerial and ground to the helix in the manner shown in Fig. 27, the high frequency currents are caused to surge up and down the aerial system into the ground and create very powerful electromagnetic waves which possess the power of exciting electrical oscillations in another aerial even though it may be located many miles away.

The existence of these oscillations is made known to the receiving operator by a device known as a *detector*, described fully in one of the following lessons.

LESSON THIRTEEN.

THE AERIAL.

THE aerial system or antenna might be termed the mouth and ear of the wireless station, for it is this huge network of wires stretching high into the air that emits or intercepts the electromagnetic waves upon which such systems of communication depend.

The value of an aerial is dependent upon its height above the surface of the earth. The greater its height the wider will be the field of force or strain set up in its neighborhood and consequently more powerful electric waves will be developed. Proximity to all large conductors, such as smokestacks, telephone lines, etc., is always avoided because these obstacles would absorb appreciable amounts of the energy sent out from the station and also shield it somewhat from the incoming waves. Aerials are usually constructed of conductors made up

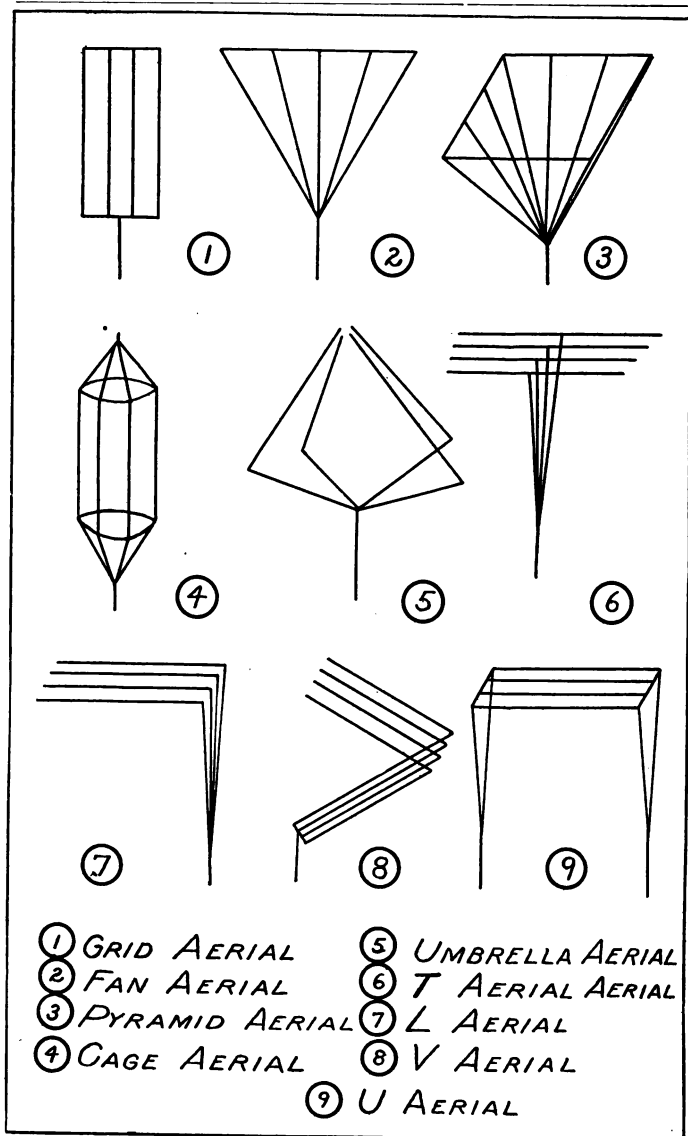


FIG. 28.
General Types of Aerials

of a number of wires stranded together. High frequency currents only travel near the surface of conductors and stranded wires consequently offer less resistance because they possess more surface than a solid conductor of equal cross section.

The aerial is always carefully insulated by means of special high tension insulators, made of insulating composition molded into a corrugated bar having iron rings embedded in each end to which the wires may be fastened.

Aerials take many different forms, but may be classified into two general groups called the *vertical* aerials and flat top aerials.

Vertical aerials compose the *grid*, *fan*, *cage* and *umbrella* forms.

Flat top aerials are known as the *T*, *inverted U*, *L* and *V* types, according to their shape.

The Pyramid Aerial is only employed in ultra-powerful stations and is becoming an obsolete form.

The Fan Aerial is a good type of especial value in crowded quarters.

The Grid Aerial is probably the best form of vertical aerial, but is gradually giving way to those of the flat top class.

The Cage Aerial is rarely used nowadays and may be considered obsolete.

The Umbrella Aerial is a very good type now being employed in many high power stations. A metallic pole or mast insulated at the base used to support the wires, so that it is part of the aerial itself.

The "T" Aerial is the most nearly perfect and gives the best "all around" results.

The "L" or Horizontal type of aerial is used wherever it is desirable for any reason to send the most powerful waves in one direction.

The "V" type is used where the highest point must be near the station.

The wire leading into the station from the aerial is called the "rat-tail" or "lead-in." It is always very carefully insulated and usually enters the station through a hole in the window or wall by means of a "window pane bushing" or "leading-in insulator."

Certain aerials possess a directive action, that is they radiate and receive messages in some directions better than others. Flat top aerials possess this peculiarity more noticeably than the vertical types. Flat top aerials receive and radiate waves coming from and going towards a direction opposite to that in which the free end points. The free end is the opposite end to that to which the "rat-tail" is connected.

There are two free ends on a "T" aerial and so this form radiates and receives its waves equally well in two directions.

The inverted "L" and "V" types possess a very decided directive action.

Certain aerial forms may be classed as *loop* and *straightaway* accordingly as they are connected and led into the station. In the straightaway form of antenna, the wires are connected together as a whole and one rat-tail led into the station. In the loop form the wires are all connected together and divided into two sections. Two wires are led into the station.

The loop form gives slightly better results in a short aerial, but in most cases the straight away is decidedly the most efficient.

LESSON FOURTEEN.

THE WIRELESS COIL.

THE induction coil used for wireless telegraph purposes differs from the ordinary coil commonly employed in the laboratory in that it is usually built in a more substantial manner and gives a heavier, more powerful discharge from the secondary.

Induction coils of this type are usually enclosed in a strong wooden case filled with insulating compound and are sometimes termed box coils. They are fitted with an interrupter arranged to give a very long period of "make" and a short "break."

Coils giving sparks greater than six inches in length are usually provided with an independent interrupter which may be one of several types.

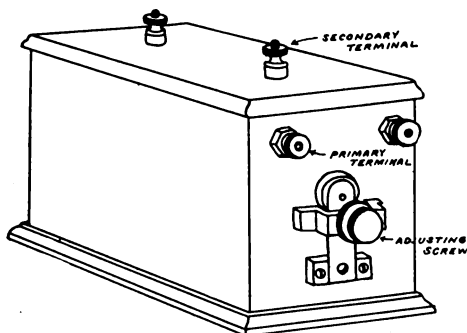


FIG. 29.
Wireless Spark Coil.

The ordinary independent interrupter consists of the usual form of interrupter, but is operated by the magnetism of a separate electromagnet in place of that of the coil primary itself. An independent interrupter of this type is usually provided with screws for adjusting the speed, and the duration of make and break.

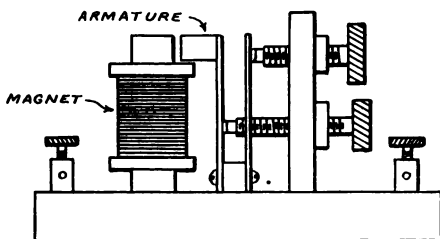


FIG. 30.
Independent Interrupter.

The Mercury Turbine form of interrupter is a very unsuccessful type in which a stream of mercury is made to play against a number of saw-shaped metal teeth. A spiral worm terminating in a nozzle at the top is rapidly revolved by an electric motor. The lower end of the tubular worm dips into a mercury reservoir so that when the spiral is revolved, the mercury rises in the tube by centrifugal action and is thrown out from the upper end in the form of a jet.

When the revolving jet strikes one of the metal teeth the circuit is made and when it passes between it is broken. Raising and lowering the saw teeth so that the mercury strikes either the lower or upper part varies the ratio of time of the make and break.

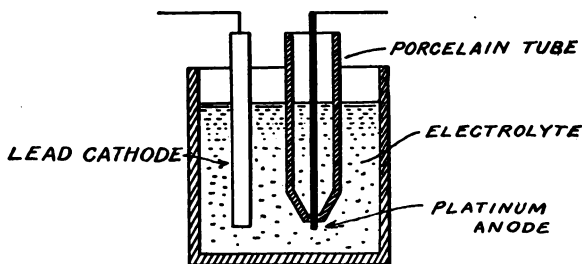


FIG. 31.

Electrolytic Interrupter.

The electrolytic interrupter consists of a cathode or negative electrode of sheet lead immersed in diluted sulphuric acid and an anode composed of a piece of platinum wire placed in a porcelain tube and projecting through a small hole in the bottom, so that only a very small portion of the wire is exposed to contact with the liquid. When a strong electric current is passed through the acid electrolyte, the current is very rapidly interrupted by the formation of gases on the small platinum electrode. The number of breaks per second possible with an electrolytic interrupter is extremely high. A potential of at least 40 volts is required to operate such an interrupter, however.

LESSON FIFTEEN.

THE HIGH POTENTIAL TRANSFORMER.

THE transformer, like the induction coil, steps up the voltage of the current to a value where it is sufficient to charge the condenser.

The transformer for wireless work should have a potential of from 15,000 to 40,000 volts. Several manu-

facturers claim advantage for low voltages and build machines having a potential of only about 8,000 volts, but experiments have shown that under most ordinary conditions higher voltages permit greater range of transmission.

Both open and closed core machines may be used with good results. Probably, however, neither one is the best.

The core of a wireless transformer is built up of sheet iron "laminations" to reduce core losses and eddy currents.

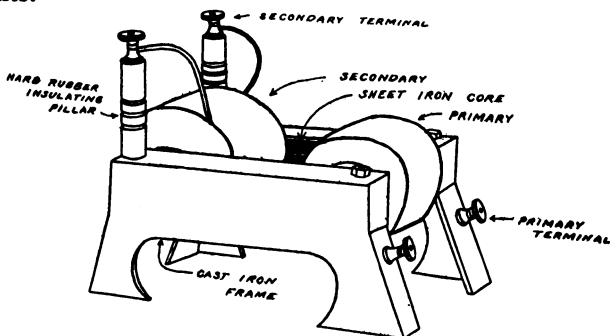


FIG. 32.

High Potential Closed Core Transformer.

The secondary windings are very carefully insulated with empire cloth or paper and may or may not be immersed in oil accordingly as they are designed.

A transformer, more especially than an induction coil, produces a "kick-back" on the line. "Kick-back" is a high potential current caused by the counter action of

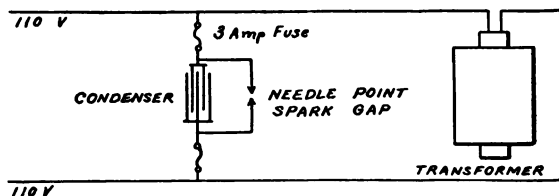


FIG. 33.

Method of Protection against "Kick-back."

currents in the condenser and aerial system, due to the fact that they continue to surge after the current has dropped to zero or so low that it is unable of its own accord to produce secondary currents which will jump the spark gap.

"Kick-back" destroys insulation and is liable to cause burnouts of other electrical instruments supplied from the same system. It may be guarded against by providing the line with a protective device which consists of a condenser having a capacity of one or two micro-farads placed directly across the terminals of the transformer in series with two five-ampere fuses. A small spark gap open about $\frac{1}{64}$ of an inch wide is connected across the terminals of the condenser.

In case special protection is desired for some instrument in the circuit, such as a meter, a protective device should be connected directly across its terminals.

LESSON SIXTEEN.

THE OSCILLATION CONDENSER.

THE Oscillation Condenser might almost be termed the most important part of a wireless station.

Transmitting Condensers usually take the form of a battery of Leyden jars arranged in a suitable case or container. Very often they are placed in a tank of oil to eliminate *brush* discharges or leakage which takes place from the edges of the tinfoil.

Leyden jars are usually covered with very heavy tinfoil or thin sheet copper to prevent blistering. The best

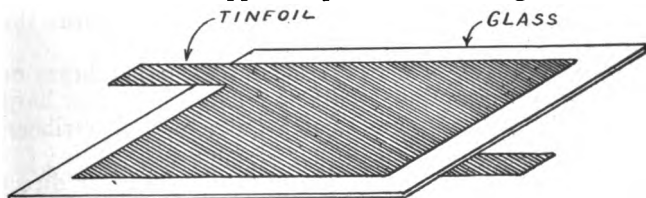


FIG. 34.
Plate Condenser.

method, however, is to deposit a metallic covering electrolytically.

The principle objection to Leyden jars is their bulk.

Glass plate condensers are not so bulky or expensive and do not blister.

Plate condensers are sometimes merely placed in racks, but more often in a tank of oil to eliminate all brush discharges.

Condensers are always made so as to be adjustable in order that the capacity of the circuit may be carefully regulated.

Only the finest selected glass of the greatest dielectric strength is used in making condensers, in order to avoid all losses and possibility of breakdown.

Whenever condensers must withstand a very heavy voltage, they may be connected in series so that the voltage is divided between them and the strain is not so great. This method reduces the capacity just one-half, however, and when used requires four times as many plates or jars, as the case may be, than if they were connected in one multiple set.

LESSON SEVENTEEN.

THE HELIX.

THE Helix supplies the greater part of the inductance to the closed circuit of the transmitter. It also acts as a transformer, serving to raise the voltage of the currents surging through the closed circuit and impress them upon the aerial system. The turns of the helix included in the closed circuit constitute the primary of the transformer, while those in the open circuit form the secondary.

A helix consists of a heavy conductor, either brass or copper, wrapped around a suitable frame of wood or hard rubber. Some forms consist of a spiral of copper ribbon clamped between two cross-shaped frames.

Helixes are of two kinds, known as "close" or direct coupled and "loose" or inductively coupled. In an inductively coupled transmitter the primary and secondary

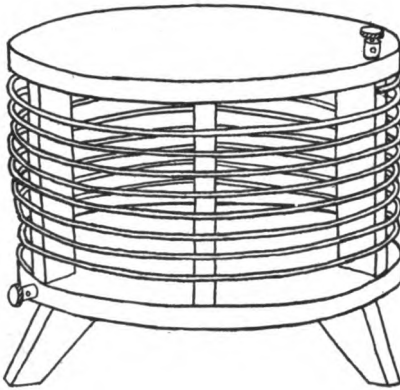


FIG. 35.
Helix.

are wound upon separate frames and are not connected together.

It has already been explained in one of the previous lessons how the oscillations or surgings of the spark discharge rapidly die away. A spark which thus rapidly dies away is said to be *rapidly damped*. The damping of a loose coupled transmitting set is never as great as that of a close coupled set.

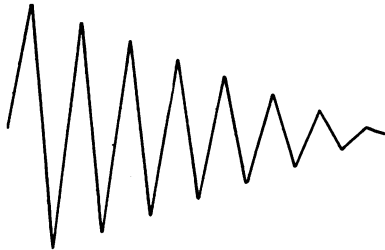
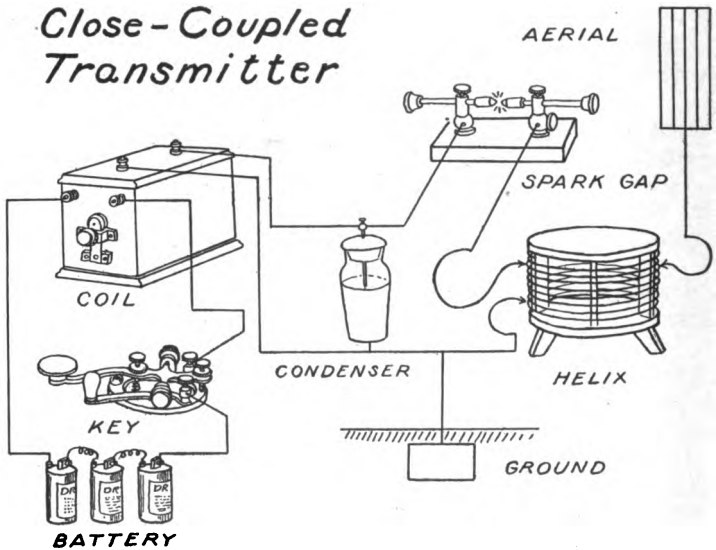


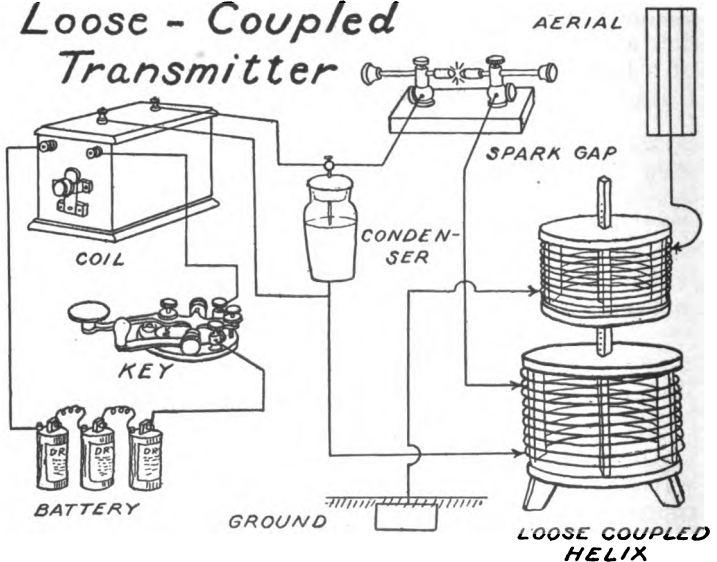
FIG. 36.
A Damped Oscillation.

An ordinary transmitter tends to emit two sets of waves of different length. By carefully adjusting the coupling, pure trains of waves are formed by attracting the apices of the two sets of waves into one.

Close-Coupled Transmitter



Loose-Coupled Transmitter



A.P. MORGAN

LESSON EIGHTEEN.

SPARK GAPS.

A Spark Gap is the medium across which the oscillatory discharge takes place. It usually consists of two electrodes of zinc alloy, nickel steel or brass, suitably mounted on an insulating base and standards.

The electrodes are usually provided with flanges or radiators which tend to dissipate the heat and keep them cool. If the electrodes should become very hot the spark would *arc*, that is, pass across the gap without generating any electrical oscillations. Spark gap electrodes are usually flat or else hollow on the sparking surface.

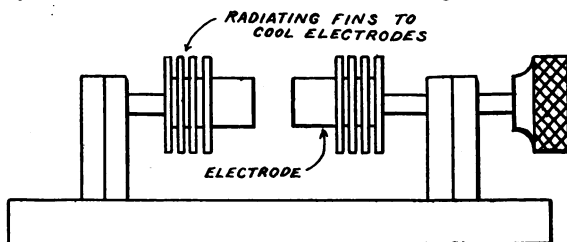


FIG. 37.
Spark Gap.

The proper adjustment of the gap, i e., the distance between the electrodes is a matter of the utmost importance for there is a point just where the maximum amount of energy will be radiated.

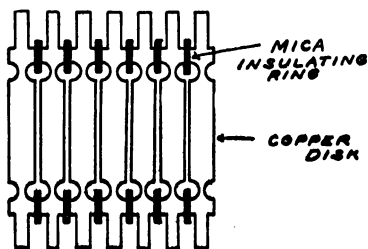


FIG. 38.
Quenched Spark Gap.

The Quenched Gap, consists of a number of brass or copper disks placed in a pile, each disk being separated from the other by a thin mica ring. The distance between two adjacent disks is usually only about .01 inch. The effect of the quenched gap is to considerably reduce the damping of the system and make it possible to send signals very great distances with the consumption of only comparatively small amounts of energy.

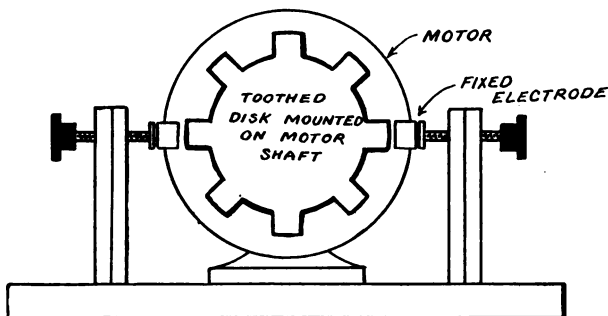


FIG. 39.
Rotary Spark Gap.

The Rotary Gap consists of a number of electrodes mounted on a motor shaft and arranged to revolve rapidly. The spark discharge takes place between the revolving electrodes and one or two fixed contacts. The effect of a rotary gap is to considerably increase the efficiency of the transmitter by allowing the condenser to become highly charged before it discharges and also reducing the possibility of arcing by keeping the electrodes cool and moving.

LESSON NINETEEN.

THE KEY.

SOME means of controlling the currents flowing through the transmitter in order to divide them into periods corresponding to the dots and dashes of the Morse Code is necessary.

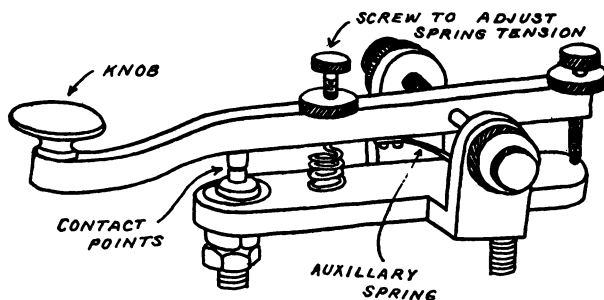


FIG. 40.
Wireless Key.

This is supplied by a hand operated switch, called a key. A key used for wireless purposes must be much larger and heavier than an ordinary key employed for line work in order to carry the more powerful currents.

In spite of the size and weight of a wireless key, if it is properly balanced, it may be handled with perfect control and ease.

The contact points of a wireless key are necessarily large and heavy. Special alloys found to be the most suitable for the purpose are usually employed. A large condenser having a mica dielectric is very often connected across the contacts to reduce the sparking.

In very large stations where extremely heavy currents must be handled, the key controls a large switch operating in oil. Every time the key is pressed the switch closes and when the key is released, opens. The currents of the transmitter are "made" and broken by the switch without passing through the key.

LESSON TWENTY.

ANCHOR GAPS.

A Loop Aerial forms an efficient antenna for receiving, but in order to be of any value for transmitting, must be converted into the straight-away form.

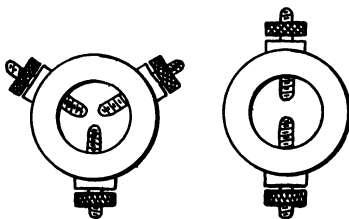


FIG. 41.
Anchor Gaps.

An anchor gap for this purpose consists of a small hard rubber ring having three electrodes or sparking points set equidistantly around the periphery and almost touching at the centre. Two of the points are connected to the aerial, one to each half and the other to the lead from the helix. The high potential currents from the helix easily leap across the little gap and divide between the two halves of the aerial.

Anchor gaps are sometimes made up to contain only two electrodes and are placed in the transmitting circuit of a Break-in-System to prevent the receiving currents from flowing directly into the ground through the transmitter without passing through the detector.

LESSON TWENTY-ONE.

AERIAL SWITCHES.

SINCE the same aerial is used both for transmitting and receiving, some method of quickly connecting it to either the transmitter or receiving apparatus must be provided. This is accomplished by means of an aerial switch.

The best and most efficient switch adopted generally by the commercial stations is the "T" type, consisting of a double pole, double throw switch having very long blades. One set of contacts is mounted on the switch base and the second are carried on a "T"-shaped support from which the switch derives its name. The aerial and ground are connected to the blades of the switch.

The lower contacts lead to the transmitting apparatus and the upper ones to the receiving instruments. By simply moving the switch up or down the aerial and ground may be connected to either the transmitter or the receptor at will.

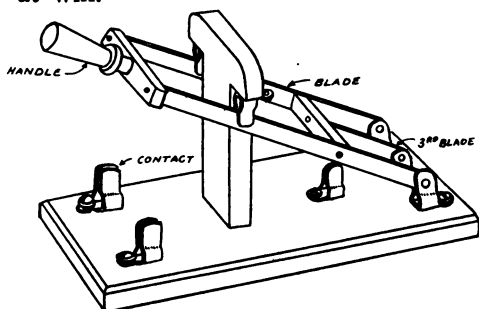


FIG. 42.
Aerial Switch.

A third blade, much shorter than the other two is usually provided and connected by means of an insulating bar to the other blades so that when they are moved it also moves. It connects with a contact arranged so that when the switch is thrown into position for transmitting the two come together. This blade and contact are made a part of the circuit supplying current to the primary of the coil or transformer so that in case the key should be accidentally touched while receiving the powerful discharge of the transmitter would not destroy the adjustment of the detector.

LESSON TWENTY-TWO.

DETECTORS.

THE little bobbins of the telephone receivers exert a very powerful choking action upon the currents of high frequency which effectually blocks their passage and prevents them from having any action upon the receiver.

The purpose of the detector is to change these currents into such as will flow readily through the magnets of the

telephone receiver and manifest themselves as sounds recognizable from their duration and periodicity as signals of the telegraph code.

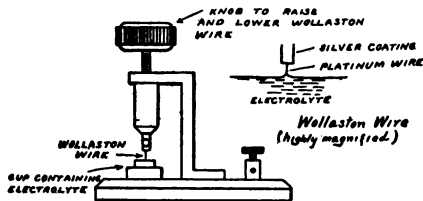


FIG. 43.
Electrolytic Detector.

Probably the most well known form is the electrolytic detector which consists of an exceedingly fine platinum wire dipping into a cup of dilute nitric acid far enough to just touch the surface of the liquid. The telephone receivers are connected to the detector, in series with a battery. The current from the detector causes bubbles to continuously form on the end of the wire and insulate it from the liquid so that the current cannot flow. When the aerial is struck by a wave, the feeble alternating currents break down the bubbles and permit the currents to flow, causing a sound in the telephone receivers.

The detectors in most common use to-day are of the crystal or rectifying type. There are a great many different forms of this type of detector, each one of which possesses certain features making it peculiarly adaptable under certain circumstances.

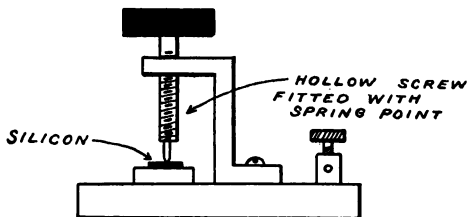


FIG. 44.
Silicon Detector.

The silicon detector consists of a flat surface of highly polished silicon upon which rests a brass point.

The Pyron detector is composed of a crystal of iron pyrites embedded in a cup of fusible metal. A small wire spring bears against the surface of the crystal. The Pyron detector is somewhat harder to adjust than other forms of crystal detector, but remains in a sensitive condition much longer.

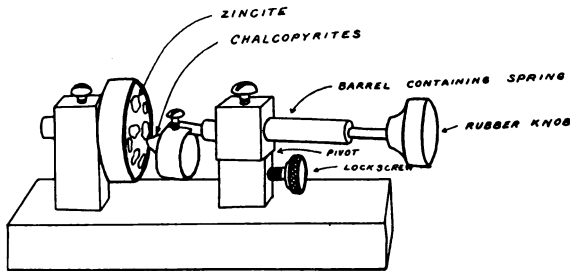


FIG. 45.
Perikon Detector.

The Perikon detector consists of a cup of fusible alloy in which are imbedded several pieces of a mineral called zincite. Another cup containing a fragment of chalcopyrites or bornite is held in a cup carried on the end of a rotating rod. The chalcopyrites is brought into contact with one of the crystals of zincite and the pressure adjusted by means of a spring. The Perikon detector will operate without a battery, but that latter is necessary in order to obtain the best results when receiving faint or far away signals.

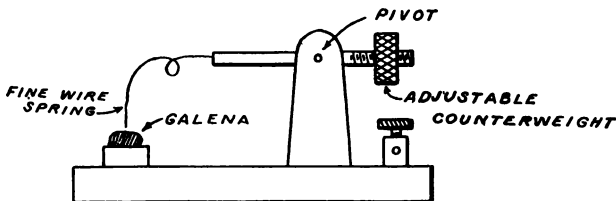


FIG. 46.
Galena Detector.

The Perikon Electra detector is a very sensitive form of the regular Perikon detector fitted with a micrometer adjustment.

The Galena detector consists of a crystal of that material to which contact is made by means of a fine wire spring exerting very light pressure.

Crystal detectors act as rectifiers and change the alternating currents into direct currents, which will pass through the telephone receivers. Minerals used for this purpose are said to possess *unilateral conductivity*, that is, they conduct currents better in one direction than the other and act much the same as a valve which allows water to flow in one direction, but not in the other.

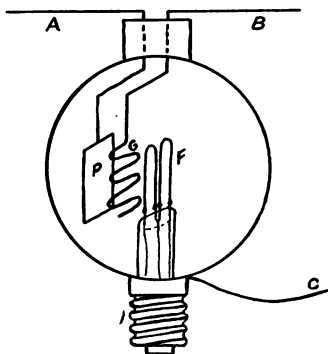


FIG. 47.
Audion Detector.

Another well known detector of the "valve" type is that known as the *Audion*, consisting of a small incandescent lamp containing a small grid and plate of nickel. When the lamp is lighted by connecting a battery to the filament, a flow of *ions* passing from the hot filament through the grid to the plate is set up. The grid and plate form part of the receiving circuit containing the telephones. The flow of ions carries the oscillatory currents from the grid to the plate, but does not allow them to pass back again. In this manner, the alternating oscillatory currents are converted into direct currents, which will pass through the telephone receivers.

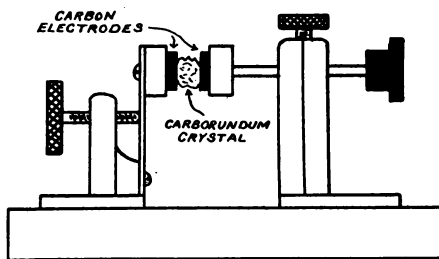


FIG. 48.
Carborundum Detector.

The Carborundum detector, as its name implies, is a device making use of the *unilateral conductivity* of carborundum. This form of detector is very sensitive and has been employed for a number of years in all the installations of the United Wireless Telegraph Co.

It consists of a small crystal of carborundum clamped tightly between two carbon electrodes. It may be used with or without a battery. The battery is preferred.

The Magnetic detector is a very sensitive device utilizing the changes in the magnetic state of iron, which are caused by rapidly oscillating currents. If a core of iron wires be placed in a varying magnetic field, the magnetization of the iron will lag behind the magnetizing force on account of *hysteresis* or "magnetic friction."

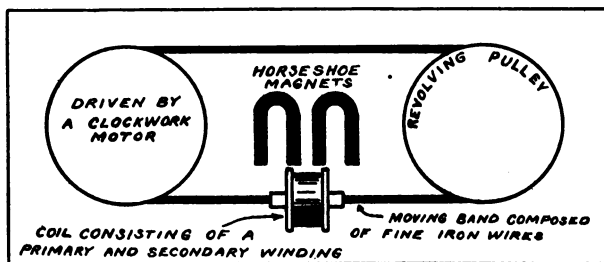


FIG. 49.
Marconi Magnetic Detector

But if a rapidly oscillating current is passed through a coil surrounding the iron, a sudden change in magnetiza-

tion occurs, sufficient to induce an E. M. F. in a second coil surrounding the core and thus operate a telephone receiver in series with this coil.

The usual form of magnetic detector consists of a belt of fine iron wires passing over two pulleys which are driven by clockwork. A pair of permanent magnets supply the field which induces a continuously varying magnetization in the moving core. The core passes through the centre of a double coil, one part of which is connected to the telephone receivers and the others to the aerial and ground.

LESSON TWENTY-THREE.

TUNING COILS.

THE tuning coil is a device consisting of a large number of turns of wire wound in the form of a cylinder and provided with one or more sliding contacts which can be brought into touch with any one of the turns at will in order to increase or decrease the electrical length or period of the circuit to suit the incoming waves.

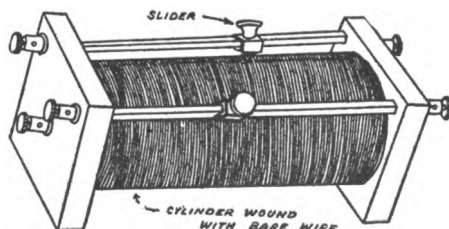


FIG. 50.
Double Slide Tuning Coil.

A circuit containing a certain amount of inductance, capacity and resistance tends to oscillate at a certain frequency. Therefore, the oscillations in every transmitting set have a certain frequency depending upon these factors. It is necessary to adjust the receiving apparatus

so that it possesses the same frequency as the transmitter. The electro magnetic waves from the transmitting station will strike the aerial of the receiving station at a certain frequency and induce currence in it. If the receiving station is *tuned* to the same *period* as the transmitter each wave will give a slight impulse to the readily excited oscillations, which will grow in intensity just as small impulses given to a pendulum at the right times will make it swing violently.

The purpose of the tuning coil is to adjust the receiving circuit to the same period as that of the transmitter.

Tuning coils are wound of bare copper wire over a core composed of a specially treated cardboard tube. The wires are spaced apart so that they do not touch one another. Either one, two or three variable contacts or sliders are provided. The coils are consequently known as "single," "double" or "three" slide tuners.

A Loading coil is a supplementary coil sometimes placed in series with the regular tuning coil to give a greater inductance to the circuit so that it may be given a much lower frequency in order to receive waves of greater length.

LESSON TWENTY-FOUR. LOOSE COUPLERS.

A Loose Coupler or Receiving Transformer is a tuning coil in which the *coupling*, as well as the inductance, is variable. We have already explained that an ordinary

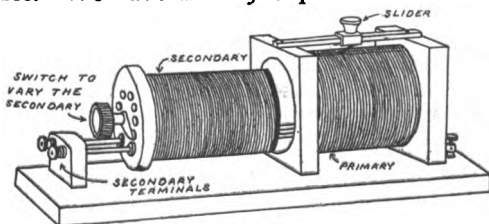


FIG. 51.
Loose Coupler.

transmitting set throws off two sets of wave trains of slightly different length, one being somewhat weaker than the other.

The purpose of the loose coupler is not only to adjust the receiving set to the period of the transmitter in the manner of the tuning coil, but by varying the coupling to attract the apices of the weaker trains of waves to the same apex as the stronger waves and so really create a *pure* wave out of the other two.

This may be more easily understood from the accompanying illustration which represents diagrammatically a double train of waves and a pure train.

In construction, the loose coupler consists of a primary winding much the same as an ordinary tuning coil provided with a single slider.

A second winding called the secondary, divided into a number of sections and adjustable by means of a multi-pointed switch mounted on one end, slides in and out of the primary.

LESSON TWENTY-FIVE.

FIXED CONDENSERS.

A fixed condenser usually implies the condenser used in the receiving circuit to furnish part of the necessary *capacity* and to shunt the telephone receivers, or as in cases where a battery is used in connection with the detector to force the current to choose a path through the comparatively low resistance turns of the tuning coil.

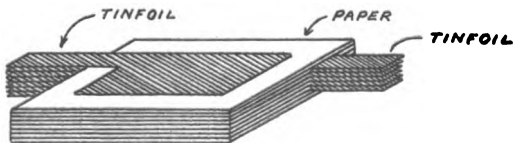


FIG. 52.
Fixed Condenser.

A fixed condenser, as its name implies, has a fixed value or capacity. It is usually constructed of sheets of

tinfoil interposed between sheets of thin paraffined paper or mica. The capacity of a fixed condenser usually varies from .002 to .005 microfarads.

An alternating current passes readily through a condenser but a direct current is effectually blocked.

When a direct current is led into a condenser as shown in the diagram, the half of the condenser represented by A becomes positively charged. When A receives a positive charge it repels the positive charge from B and attracts the negative thus making B negative. There is no change in the direction of the current after the first connection and the charge remains fixed and no currents pass.

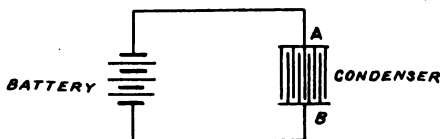


FIG. 53.

If an alternating current is applied to the condenser when A receives a positive charge, B becomes negative. When A reverses and becomes negative B becomes positive. This process goes on, the two halves constantly changing their charge with the result that the current continues to flow.

A fixed condenser may occupy one of two places in a receiving circuit, either in series with the tuning coil and detector or directly across the telephone receivers. In the illustration A shows a detector requiring a battery with a fixed condenser in series with it and the coil. The oscillations set up in the circuit by the incoming waves can readily pass through the condenser and effect the detector because they are *alternating*. If it were not for the condenser the *direct* battery current would pass through the tuning coil instead of the detector because of the comparatively low resistance of the former.

Crystal detectors do not require a battery and may be connected to a tuning coil with a condenser in series and the telephone receivers either across the terminals of the detector or across the terminals of the condenser.

When in the latter position, the proper capacity for the fixed condenser will depend upon the resistance of the telephone receivers, the higher the resistance the less the capacity that will be required and vice versa.

LESSON TWENTY-SIX.

VARIABLE CONDENSERS.

THE point of sharpest resonance does not always happen to come on a turn of the tuner where it can be reached by the slider. The variable condenser makes it possible to adjust the circuit to the exact point of resonance.

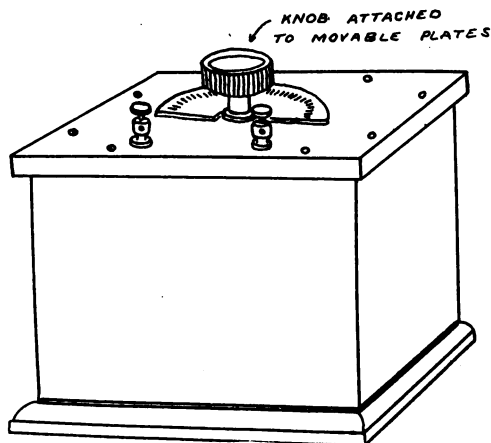


FIG. 54.
Rotary Variable Condenser.

Variable condensers are of two general types, the Sliding Plate and the Rotary Variable. The rotary variable is the most convenient and easy to manipulate. It consists of a number of fixed semi-circular metal plates between which swings a set of smaller movable semi-circular plates. The fixed plates form one half of the condenser and the movable plates the other. In this way

the capacity of the condenser is very closely adjustable. The movable plates are provided with a pointer moving over a graduated scale so that the comparative amount of capacity in the circuit is indicated.

The sliding plate type of condenser consists of a number of rectangular fixed plates between which slide a set of movable plates.

The dielectric between the plates of a variable condenser is *air*. There are no losses of energy due to hysteresis in a condenser having an air dielectric. Rotary condensers employing silk or some such material are not to be recommended.

LESSON TWENTY-SEVEN.

TELEPHONE RECEIVERS.

TELEPHONE receivers employed for wireless telegraphy are the same in principle as the ordinary telephone receiver but differ in construction and detail slightly.

They are always of the watch case type, this style being small and light, and consist of a ring or horseshoe shaped permanent magnet upon the poles of which are mounted two small bobbins containing many turns of fine insulated wire. Over the magnets, very close to but not quite touching, is placed a circular diaphragm of thin sheet iron. The lines of force created by the permanent magnet pass through the cores of the little bobbin and exert a constant pull on the diaphragm.

The little bobbins of wire or electromagnets are connected in series. If a current of electricity is sent through them they will create a little field of force of their own which will strengthen or decrease that of the permanent magnets according in which direction the current flows. Each change in the pull exerted on the diaphragm causes it to move and send out little sound waves which may be heard when the receiver is held close to the ear.



FIG. 55.
Types of Telephone Head Sets.

We have already learned that the strength of a magnet depends upon the *ampere turns*. Suppose that a current of one ampere passed through a coil containing 100 turns; $100 \text{ turns} \times 1 \text{ amp.} = 100 \text{ ampere turns}$. If only one-tenth of an ampere was available and we wished to retain the same magnetic strength in the coil, the number of turns would have to be increased to one thousand in order for the ampere turns to remain equal; $1/10 \text{ amp.} \times 1,000 \text{ turns} = 100 \text{ ampere turns}$.

The currents passing through the receiver from the detector are exceedingly weak, and so in order to produce the maximum effect on the diaphragm, the electromagnets must be wound with a large number of turns of very fine wire. The resistance of fine wire is very great and for this reason wireless telephone receivers are usually termed *high resistance receivers*.

Winding a receiver with many turns of fine wire does not make it more *sensitive* in the true sense of the word or from the standpoint of efficiency, but makes it better suited to the minute fluctuations of a *weak* current.

The classification of receivers, according to their resistance is a method of indicating the comparative number of turns and the finess of the wire used in winding the electromagnets. Receivers should be wound with copper wire only.

Wireless receivers come in pairs provided with a headband so that they may be securely clamped on the ears.

The receiver cases are made of rubber, composition, brass and aluminum depending upon the design and manufacture. It is immaterial which.

LESSON TWENTY-EIGHT.

THE HOT WIRE AMMETER.

THE hot-wire ammeter is a device for indicating when the transmitting circuits are properly adjusted and arranged to emit the maximum amount of energy. It is placed in series in the aerial circuit so that the high frequency currents surging in the latter must pass through the meter and indicate their strength by moving the pointer a certain distance over a graduated scale.

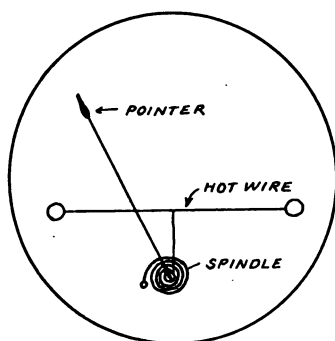


FIG. 56.

Diagram showing the Constructive Principle of a Hot Wire Ammeter.

When a current of electricity flows through a wire it develops a certain amount of heat therein. If the wire is of high resistance the heat will be great enough to cause the wire to expand. Advantage has been taken of this fact in the construction of the hot-wire ammeter. This device consists of a piece of platinum wire or a platinum alloy stretched taut between two posts. The wire is included in the aerial circuit. The platinum wire is connected to a spindle carrying a pointer in such a manner that when the heat causes the wire to expand the expansion is conveyed to the spindle and the pointer moves over the scale magnifying the motion. The greater the current flowing through the wire the greater

will be the deflection of the pointer. The scale is calibrated by comparison with a standard meter to read in amperes.

When a hot-wire ammeter is placed in circuit the latter is tuned by moving the position of the helix clips on the helix, altering the length of the spark gap and the condenser capacity until the maximum deflection is indicated. It is then removed from the circuit.

LESSON TWENTY-NINE.

POTENTIOMETER

The potentiometer is an instrument for carefully regulating the voltage of the battery supplying a detector of the electrolytic or carborundum types with current.

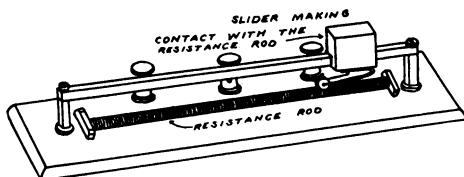


FIG. 57.
Potentiometer.

It is necessary to bring the potential of the battery to a certain critical point where it is just insufficient to "break down" the detector, that is, overcome the resistance which it offers to the oscillatory currents.

In construction, the potentiometer usually consists of a small rod wound with German silver wire and provided with an adjustable contact. Graphite resistance rods are merely a cheap method of making a potentiometer and are to be avoided as entirely unsatisfactory for the purpose.

LESSON THIRTY.

"HOOK-UPS."

Or Methods of Connecting the Instruments.

"Hook-ups" or circuit diagrams showing the manner

of connecting various instruments are well worth considerable study if one is desirous of securing the greatest selectivity and distance from his apparatus.

There are almost an endless number of ways and combinations of ways of connecting apparatus, and strange to say, different people seem to be able to secure the best results with widely different methods. In spite of the fact that circuits of this kind are very numerous they can all be reduced to a few fundamental forms and an understanding of these forms will enable a person to devise his own "hook-ups" at will.

Transmitting circuits are fundamentally almost the same. The only real difference in arrangement is made by interchanging the condenser and spark gap. Either one may be placed across the terminals of the induction coil or transformer. There is no difference in the results.

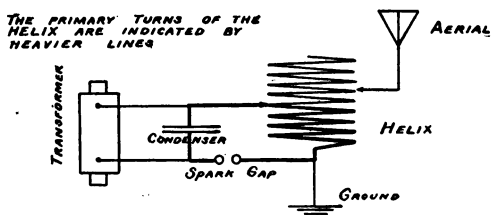


FIG. 58.

Consider the circuit shown in the accompanying illustration. The action of the transformer is to charge the condenser to such a point that the voltage is sufficient to leap the spark gap and cause a discharge. The rush of current which is oscillatory takes place through the condenser, spark gap and *primary* turns of the helix, or in other words through the *closed* circuits. The *secondary* turns of the helix, which are those forming part of the aerial circuit, are larger in number than those of the primary, and because of this ratio cause currents of higher voltage than those of the condenser to be impressed upon the aerial system. The currents in the aerial system surge up and down the aerial through the helix into the ground.

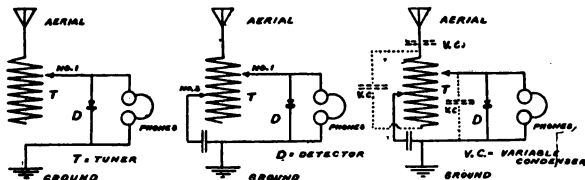


FIG. 59.

Receiving Circuits.

A shows a simple receiving circuit wherein a single slide tuning coil is connected to a detector. The high frequency currents generated in the aerial surge up and down the system and pass through the detector on their way to the ground. By moving the slider back and forth the electrical length of the circuit may be varied to suit the length of the incoming waves. Oscillations may be *forced* upon such a circuit, that is, if the waves are very powerful they will pass through the system and effect the detector no matter whether the slider is adjusted to suit them or not. This would cause interference and confusion in case more than one station were operating at a time.

By adding a second slider and a condenser as shown in B, this may be avoided to a considerable extent, for slider No. 1 may be adjusted to the desired signals and slider No. 2 placed in a position such as will give the branch of the circuit from the aerial, through the coil and into the ground of which it is a part, a period suited to the objectionable wave and so *carry off* the latter into the ground without effecting the detector. The desired signals will pass into the ground through the other branch of the circuit and operate the detector which lies in their path. The *selectivity* of the outfit may be further increased by the addition of a variable condenser.

A variable condenser may be placed in one or more of a great many positions. The accompanying illustrations show several. The effect of a condenser placed in series with the ground or aerial is just the opposite of that of a loading coil. It decreases the period and shortens the wave length to which it is adapted.

The Amateur's Wireless Handy Book shows over one hundred wiring diagrams starting from the simplest and going to the most complicated in a natural sequence.

Any of the Following .∴

Practical Books

**will be sent at Once, Post-paid on receipt
of price.**

**There is very little danger of losing currency
enclosed in a letter if the following directions are
observed :**

**Cut a circular hole the diameter of the
coin in a piece of cardboard, of suf-
ficient size to fit closely in the
envelope. The cardboard should be
no thicker than the coin.**

**Insert the coin in the hole and paste
a piece of paper on both sides of the
cardboard to prevent the coin from
falling out.**

**WE HAVE THE LARGEST LINE OF
TWENTY-FIVE CENT BOOKS**

COLE & MORGAN

**Publishers of the Arts and Sciences Series
P. O. Box 1473 NEW YORK, N. Y.**

Price, 25c. Each.

SIMPLE PHOTOGRAPHIC EXPERIMENTS. A series of instructive experiments in Practical Photography. By T. T. BAKER. 68 pages, 14 illustrations.

SIMPLE CHEMICAL EXPERIMENTS. A series of instructive experiments in inorganic chemistry. By T. T. BAKER. Contents of Chapters:—1. How to fit up and equip a small chemical laboratory. 2. How to fit up apparatus. 3. Elements and compounds. 4. Preparation of Chlorine. Ammonia, hydrochloric acid, etc. 5. Combustion. 6. How to make oxygen; hydrogen; ozone; etc. 7. Preparation of metallic salts. 8. Sulphur. 9. The atmosphere. 10. Making Chemicals. 72 pages, 19 illustrations.

STANDARD SCREW THREADS AND TWIST DRILLS. A Guide to. By GEORGE GENTRY. The tables given are for small sizes of the following makers:—Whitworth Standard; British association standard; bicycle screw threads; cycle standard; V Standard and U. S. Standard forms; International standard thread, metric system; "Progress" metric system of screws for watches; 77 pages, 6 illustrations.

THE LOCOMOTIVE, simply explained. By CHAS. S. LAKE. A first introduction to the study of the locomotive engine, their designs, construction and erection, with a short catechism in the form of questions and answers. 72 pages, 26 illustrations.

STEAM TURBINES. How to design and build them. By H. H. HARRISON. A practical handbook for model makers. Contents of Chapters. 1. General Consideration. 2. Pressure Developed by an Impinging Jet; Velocity and Flow of Steam Through Orifices. 3. Method of Designing a Steam Turbine. 4. Complete Designs for DeLaval Steam Turbines; Method of Making Vanes; Shrouding. 5. The Theory of Multiple Stage Turbines. With detail drawings and tables. 85 pages, 74 illustrations.

MODEL BOILER MAKING. A practical handbook on the designing, Making and Testing of small Steam Boilers. By E. L. PEARCE. Contents of Chapters:—1. General principles of boiler design, materials, shape, proportions, strength, capacity, heating surface. 2. Stationery boilers. 3. Launch boilers. 4. Locomotive boilers. 5. Setting out plates, spacing tubes, etc. 6. Boiler fittings. 7. Fuel, lamps, fire-grates. 86 pages, 35 illustrations.

GAS AND OIL ENGINES SIMPLY EXPLAINED. A practical handbook for Engine attendants. By W. C. RUNCIMAN. Contents of Chapters:—Preface. 1. Introductory. 2. The component parts of an engine. 3. How a gas engine works. 4. Ignition devices. 5. Magneto ignition. 6. Governing. 7. Cams and valve settings. 8. Oil Engines. 88 pages, 51 illustrations.

THE MODEL LIBRARY SERIES

Price, 25c. Each.

TELEGRAPHY FOR BEGINNERS. The Standard Method. An Authoritative book of instruction in the methods and forms most approved, with a series of lessons. By Willis H. Jones, Wire Chief, Western Union Teleg. Co.

Contents of Chapters: 1. Introductory remarks, practical advice and important rules to observe. 2. The Morse alphabet and other characters, with lessons. 3. Signals and abbreviations. 4. Sporting events and market reports in tabulated form with examples. 5. The student's outfit and practice circuit with diagrams of connections. 6. How to adjust the sounder. Adjustment of key. Connections for main line and sounder, etc. With the Morse alphabet and the Continental code. 64 pages, 19 illustrations, paper binding, 25c.; cloth binding, 50c.

MAGNETS AND MAGNETISM. Simply Explained. By A. W. Marshall. **Contents of Chapters:**—1. The Theory of magnets. 2. Permanent magnets. 3. Electro magnets. 4. Solenoids or tubular electro-magnets. 5. Experiments with magnets. A very clearly written explanation of an important subject. 88 pages; 49 illustrations.

SIMPLE SOLDERING. BOTH HARD AND SOFT. Together with descriptions of inexpensive home-made apparatus necessary for this art. By Edward Thatcher. **Contents of Chapters:**—1. Soldering. 2. Soft Soldering. 3. Methods of holding work. 4. Hard Soldering and brazing. 5. Cleaning up work, polishing. 6. Standard Apparatus. 7. Home-made apparatus. 84 pages; 52 illustrations.

WIRING HOUSES FOR THE ELECTRIC LIGHT. With special reference to low voltage battery systems. By Norman H. Schneider. Complete instructions and diagrams for wiring houses. **Contents of chapters:** 1. Introduction. 2. Planning the Wiring. 3. Completing the Installation. 4. Installing the Lights. 5. Other Methods of Wiring. 6. Materials and Notes. 7. Notes on Underwriters' Rules. 94 pages, 42 illustrations.

WIND MILLS AND WIND MOTORS, how to build and run them, by F. E. Powell, giving full detailed instructions for the construction of various sizes of windmills, with full detailed drawings. **Contents of chapters:** 1. Wind mill evolution showing various types of old wind mills and wind motors. 2. The model working wind mill, diameter across sails two feet. 3. A small American type windmill, with full detailed drawings, diameter of sails three feet. 4. A small working windmill, reversing type, diameter across sails, six feet with scale drawings. 5. A practical working windmill, diameter across sails ten feet, with detailed drawings. 6. The production of electricity by wind-power. 83 pages, 76 illustrations.

Price, 25c. Each.

SMALL DYNAMOS AND MOTORS. How to make and use them. A practical handbook, by F. E. POWELL. Contents of Chapters:—1. General Considerations. 2. Field Magnets. 3. Armatures. 4. Commutators and Other Details. 5. Tables of Windings. 6. How to Build a Small Machine. 7. Useful Data. 8. Testing and Repairing. 76 pages, fully illustrated with detail drawings.

SMALL ELECTRIC MOTORS. How to make and use them. By F. E. POWELL. Contents of Chapters:—1. Some points in the design of electric motors. 2. Examples of small motors to be worked by battery power. 3. A Model four-pole electro motor. 4. Motors for use on electric lighting circuits. 5. Applications of small motors and the power required for certain work. 6. Starting and speed controlling switches; fuses. 7. Reversing switches for Model motor; gearing, with tables of windings. 75 pages, 48 illustrations.

ELECTRIC BELLS AND ALARMS. A practical handbook on their construction, installation and repair. By F. E. POWELL. 77 pages, 51 illustrations.

ELECTRIC BATTERIES. How to make and use them. Practically describing the common forms of primary batteries. By PERCIVAL MARSHALL. 63 pages, 34 illustrations.

TELEPHONES AND MICROPHONES. A practical handbook on their construction and use. By PERCIVAL MARSHALL. Including testing, faults and their remedies. 80 pages, 33 illustrations.

SIMPLE ELECTRICAL WORKING MODELS. By PERCIVAL MARSHALL. Showing the construction of electrical toys and novelties, easily constructed with a few tools from simple materials. 69 pages, 43 illustrations.

X-RAYS SIMPLY EXPLAINED. A handbook on the theory and practice of Radio-telegraphy. By R. P. HOWGRAVE-GRAHAM. A most instructive and interesting work. 93 pages, profusely illustrated.

ELECTRIC LIGHTING FOR AMATEURS. A Practical Guide to the installation of light on a small scale, describing the construction of lamps, lamp-holders, switches, batteries, etc., etc. By PERCIVAL MARSHALL. 80 pages, 45 illustrations.

ELECTRICAL APPARATUS SIMPLY EXPLAINED. A first-rate little book describing the principles and working of some of the electrical appliances in general use. 80 pages, 35 illustrations.

SIMPLE SCIENTIFIC EXPERIMENTS. How to perform entertaining and instructive experiments with simple home-made apparatus with 59 illustrations.

Price, 25c. Each.

SMALL ELECTRICAL MEASURING INSTRUMENTS. How to Make and Use Them. By PERCIVAL MARSHALL. Contents of Chapters:—1. Instruments for testing the presence of an electric current, detectors, galvanometers. 2. Instruments for measuring the pressure or quantity of an electric current, amperemeters; voltmeters. 3. Instruments for measuring electrical resistance, wheatstone bridge. 4. Instruments for measuring static electricity. 5. Practical details for construction. 6. The principles upon which electrical measuring instruments work. 7. How to use electrical measuring instruments. 8. How to choose electrical measuring instruments. 90 pages, 59 illustrations.

PRACTICAL ELECTRICS. A universal handy book on everyday electrical matters, including connections, alarms, batteries, bells, carbons, induction and resistance coils, dynamos, measuring, microphones, motors, telephones, phonographs, photophones, etc. 135 pages, 126 illustrations.

INVENTIONS. How to Protect, Sell and Buy Them. By FREDERIC B. WRIGHT. Counsellor in Patent Causes. This book is especially written for the use of Inventors, instructing them how to place their inventions before an Attorney clearly; the rights given them under the Law, Patent specifications, Legal forms, and the many points necessary for an Inventor to know to protect himself under the American Laws. The most practical and clearly written American book on this subject, especially intended for the uninitiated. 114 pages, and 1 sample pattern drawing.

WOODWORK JOINTS. How to make and where to use them. A new revised and enlarged edition. Contents of Chapters: 1. Mortise and tenon joints. 2. Lap joints. 3. Dove-tail joints. 4. "Glue" joints. 5. Scarfing joints and joints for lengthening timbers. 6. Circular work, showing how to make joined woodwork frames in the form of ovals and circles. The work describes clearly the construction of the principle joints used in carpentry and joinery, and shows not only how to set them out, but indicates for what purpose they are best suited. 101 pages, 178 illustrations.

UNIVERSAL TIME CARD MODEL. By setting to the desired hour at any one place the movable model will show at a glance the actual time of all the other places in the world. Printed on stiff card in two colors, size 7 in. by 9 in.

MODEL STEAM ENGINE DESIGN. A handbook for the Designer of small Model Steam Engines, including original tables and calculations for speed, power, proportions of pumps, compound engines, and valve diagrams. By ROBERT M. DE VIGNIER. Contents of Chapters: 1. Various Types. Speed of Model Engines. 2. Power Calculations. Materials. 3. Feed Pumps. 4. Compound Engines. 5. The Valve Diagram. 6. Engine Layout. Patterns. 102 pages, 34 illustrations.

THE MODEL LIBRARY SERIES

25c. BOOKS.

ELECTRICITY. The study of, and its laws for beginners, comprising the laws of electric current generation and flow, Ohm's law, galvanism, magnetism, induction, principles of dynamos and motors, wiring, with explanations of simple mathematics as applied to electrical calculations. By N. H. SCHNEIDER. With 55 original illustrations and 6 tables.

DRY BATTERIES. A practical handbook on the designing, filling and finishing of dry batteries, with tables, for automobiles, gas engine, medical and coil work, electric bells, alarms, telephones, experiments and all purposes requiring a first-rate battery. Fully illustrated with 30 original drawings.

ELECTRICAL CIRCUITS AND DIAGRAMS. Being a selection of original up-to-date and practical diagrams for installing annunciators, alarms, bells, electric gas lighting, telephones, electric power light and wiring circuits, induction coils, gas engine igniters, dynamos and motors, armature windings. By N. H. SCHNEIDER.

ELECTRIC BELLS AND ALARMS. How to install them. By N. H. SCHNEIDER. Including batteries, wire and wiring, circuits, pushes, bells, burglar alarms, high and low water alarms, fire alarms, thermostats, annunciators, and the locating and remedying of faults. With 56 original diagrams.

MODERN PRIMARY BATTERIES. Their construction, use and maintenance, including batteries for telephones, telegraphs, motors, electric lights, induction coils, and for all experimental work. By N. H. SCHNEIDER. 94 pages, 55 illustrations. The best and latest American book on the subject.

EXPERIMENTING WITH INDUCTION COILS. H. S. NORRIE, author of "Induction Coils and Coil Making." A most instructive little book, full of practical and interesting experiments, fully explained in plain language with numerous hints and suggestions for evening entertainments. Arranged under the following headings: Introduction; The Handling of Ruhmkorff Coil; Experiments with Sparks; Effects in the Vacuum; Induction and Wireless Telegraphy. With 36 original illustrations. [In the press]

SMALL ACCUMULATORS. How made and used, by P. MARSHALL. Giving full descriptions how to make all the parts, assemble them, charge the cells and run them, with examples of their practical application. Useful receipts and memoranda and a glossary of technical terms. 80 pages, 40 illustrations, paper.

ELECTRIC GAS LIGHTING. How to install Electric gas lighting apparatus including the jump spark and multiple systems for all purposes. Also the care and selection of suitable batteries, wiring and repairs, by H. S. NORRIE. 101 pages, 57 illustrations, paper

Price, 25c. Each.

THE BEGINNERS GUIDE TO THE LATHE. An elementary instruction book on turning in wood and metal. By PERCIVAL MARSHALL. Specially written in plain language for the beginner and as an elementary text-book for manual training schools. Contents of Chapters:—1. The lathe and its parts. 2. Method of holding and driving work. 3. Turning in wood. 4. Turning in metal. 5. The Slide-Rest. 6. Drilling and boring in the lathe. 76 pages, 75 illustrations.

MECHANICAL DRAWING SIMPLY EXPLAINED. By F. E. POWELL. The threefold object of this book is to show how drawings are made, how to read other peoples' drawings, and how to make practical working drawings. Contents of Chapters:—1. Introduction. 2. The use and care of drawing instruments. 3. On "reading" and setting out drawings. 4. Inking-in and finishing drawings. 5. On drawing for reproduction. 78 pages, 44 illustrations.

MODEL STEAMER BUILDING. By PERCIVAL MARSHALL. A practical handbook on the design and construction of model steamer hulls, deck-fittings, and other details, including a model torpedo boat destroyer, and a side-wheel passenger steamer. With laying-off tables. 64 pages, 39 illustrations.

MACHINERY FOR MODEL STEAMERS. By PERCIVAL MARSHALL. A practical handbook on the design and construction of engines and boilers for model steamers, single and double cylinder engines, side wheel engines. The use of liquid, fuel, and the proportions of machinery for model boats. 64 pages, 44 illustrations.

METAL WORKING TOOLS AND THEIR USES. A Handbook for Young Engineers and Apprentices. Shows how to use simple tools required in metal working and model making. By PERCIVAL MARSHALL. 73 pages, 86 illustrations.

SIMPLE MECHANICAL WORKING MODELS. How to make and use them. By PERCIVAL MARSHALL. How to make the following: Water and wind motors; hot-air engines; steam engine and pump; slide valve launch engine; model steam boats; working locomotive in cardboard, model gravitation railway, etc. 64 pages, 34 illustrations.

MODEL STEAM ENGINES. How to Understand Them and How to Run Them. By H. GREENLY. Including examples of stationary locomotive, portable and marine engines. With different kinds of boilers and methods of getting up steam, as well as engine details and valve mechanisms, etc. 87 pages and 55 illustrations.

MODEL RAILWAYS. A handbook on the choice of Model Locomotives and Railway Equipment, including designs for rail formations, and Model Railway Signaling, by W. J. BASSETT-LOWKE. 72 pages, 76 illustrations.

Price, 25c. Each.

MAKING WIRELESS OUTFITS. By NEWTON HARRISON, E.E. A concise and simple explanation on the construction and use of simple and inexpensive wireless equipments, for sending and receiving up to 100 miles, giving full details and drawings of apparatus, diagrams of circuits and tables. Including the Morse and Continental Codes. 61 pages, 27 illustrations.

CIRCUITS AND DIAGRAMS. Part 2. By NORMAN H. SCHNEIDER. Alternating Current Generators and Motors: Single Phase and Polyphase Transformers: Alternating Current and Direct Current Motor Starters and Reversers: Arc Generators and Circuits: Switch-Wiring: Storage Battery: Meter Connections: etc. etc. 69 original drawings, with full explanations.

ALTERNATING CURRENTS SIMPLY EXPLAINED. An Elementary Handbook on Alternating Current Generators, Transformers, and Motors. By ALFRED W. MARSHALL. This book is written for those who desire elementary information about Alternating electric currents, simply written and yet intensely interesting. Contents of Chapters:—1. What an Alternating Current is. 2. How Alternating Currents are Produced. 3. How Alternating Currents are Measured. 4. Transformers and Choking Coils. 5. Alternating Current Motors. 6. Rotary Converters. 7. Rectifiers. 82 pages, 32 illustrations.

INDUCTION COILS. How to Make and Use Them, by P. MARSHALL. New edition revised and enlarged by K. STOVE. A practical handbook on the construction and use of medical and sparking coils for wireless telegraphy, gas engines, automobiles, gas lighting, X-rays, and all other purposes. With complete tables of windings for coils giving $\frac{1}{4}$ in. spark up to 12 in. sparks. With full description for the construction of mercury interrupters. 76 pages, 35 illustrations.

SIMPLE EXPERIMENTS IN STATIC ELECTRICITY. By P. C. BULL, M.A. Contents of Chapters:—1. Production of electricity by various means. Viz.: friction, heat, pressure, chemical action, etc. 2. Electrical attraction, repulsion, and distribution. 3. Induction. 4. Leyden jars and other condensers. 5. Mechanical, chemical and heating effects. 6. Luminous effects. 7. Miscellaneous experiments. Being a series of instructive and entertaining electrical experiments. 72 pages, 51 illustrations.

THE MAGNETO TELEPHONE. Its construction, fitting up and use, by NORMAN HUGHES. Giving full particulars for planning out a short line, putting up the insulators, stringing wires, connecting instruments, with suitable batteries. 80 pages, 23 illustrations, including a number of diagrams of circuits.

50 Cent Books.

PRACTICAL DYNAMO AND MOTOR CONSTRUCTION. A handbook of Constructive Details and Workshop Methods used in Building Small Machines. By ALFRED W. MARSHALL. Contents of Chapters: 1. Field Magnets. 2. Winding Field Magnets. 3. Drum Armature Building. 4. Ring Armature Building. 5. How to Wind Armatures. General Notes. Siemens or H Armatures. Polar Armatures. 6. How to Wind Armatures (continued). Drum and Ring Armatures. Binding Wires and Repairs. 7. Commutator Making. 8. Brush Gears. 9. Mechanical Details of Dynamos and Motors. 10. Terminals and Connections. **131 pages, 133 illustrations, 12mo., boards.**

MODEL SAILING YACHTS. How to Build, Rig, and Sail Them. A practical handbook for Model Yachtsmen. Edited by PERCIVAL MARSHALL. Contents of Chapters: 1. Introductory: Types of Yachts and Rigs: How to Choose a Model Yacht. 2. The Rating of Model Yachts. 3. The Construction of "Dug-Out" Yachts. 4. The Construction of "Built-Up" Yachts. 5. Sails and Sail Making. 6. Spars and Fittings. 7. Rudders and Steering Gears. 8. Notes on Sailing. **144 pages, 107 illustrations, 12mo., boards.**

PRACTICAL MOTOR CAR REPAIRING. A handbook for Motor Car Owners and Drivers. By ERIC W. WALFORD. Contents of Chapters: 1. The Motor. 2. Ignition. 3. Cooling System. 4. The Carburettor: Exhaust and Lubrication Systems. 5. Transmission. 6. Frames, Springs, Axles and Wheels. 7. Tires. 8. Causes and Effects. 9. Miscellaneous. **126 pages, 39 illustrations, 12mo., boards.**

THE BEGINNER'S GUIDE TO CARPENTRY. A practical handbook for Amateurs and Apprentices. By HENRY JARVIS. Contents of Chapters: 1. Indispensable Tools. 2. How to Use the Saw. 3. How to Use the Plane. 4. How to Use Chisels and Gouges. 5. How to Use the Spokeshave, Axe, Pincers, Compasses, Gimlets, Brad-Awls, Hammer, etc. 6. Making the Bench. 7. Timber: How Sold, etc. 8. Additional Tools and How to Use Them. 9. Sharpening Tools. 10. Home-made Tools and Appliances. 11. Facing up and Setting out Work. 12. On Setting out and Putting Together Work Joining at Other than Right Angles. 13. Glue: How to Purchase, Prepare, and Use. 14. How to Make Joints: Use of the Plough, etc. 15. Ornamenting Work, Curved Work, Scribing, etc. **128 pages, 99 illustrations, 12mo., boards.**

CIRCULAR SLIDE RULE. The Use and Working of the Watch Calculator and Circular Slide Rule. Contents of Chapters: 1. The Watch Form of Calculator. 2. The Gravet Slide Rule. 3. The Theory of the Slide Rule and Calculator. With 10 folding plates of illustrations. **12mo., limp cloth.**

THE MODEL LIBRARY SERIES

Price, 25c. Each.

THE WIMSHURST MACHINE. HOW TO MAKE AND USE IT. A practical handbook on the construction and working of Wimshurst machines, including radiography and wireless telegraphy and other static electrical apparatus. By A. W. Marshall. Second edition, revised and enlarged. Containing a number of sectional drawings and details to scale. Contents of chapters: 1. Introductory. 2. Static Electricity. 3. The electrophorus. 4. The Electroscop. 5. Condensers. 6. The Leyden Jar. 7. The Parts of a Wimshurst Machine and Their Use. 8. Making and Management of Wimshurst Machines. 9. Some Examples of Wimshurst Machines, small machines. 10. Complete detailed drawings and particulars for the construction of a 24-inch plate machine. 11. The Wimshurst machine for X-ray work with detailed drawings. 12. Experiments for Wimshurst machine. 112 pages, 30 illustrations and plates.

WIRELESS TELEPHONE CONSTRUCTION. By Newton Harrison. A comprehensive explanation of the making of a Wireless Telephone Equipment. Both the transmitting and receiving stations fully explained with details of construction sufficient to give an intelligent reader a good start in building a Wireless Telephone system and in operating it. 74 pages and 43 illustrations.

LOW VOLTAGE ELECTRIC LIGHTING WITH THE STORAGE BATTERY. Specially applicable to Country Houses, Farms, Small Settlements, Launches, Yachts, etc. By Norman H. Schneider. Giving full details and illustrations of the most up-to-date small American Plants. Contents of chapters. 1. Introduction. 2. The Storage Battery. 3. Estimating the Installation. 4. The Electric Plant. 5. Some Typical Plants. 6. Installation and Operation. 95 pages, 27 illustrations.

PLANS AND SPECIFICATIONS FOR WIRELESS TELEGRAPH SETS, Part II, by A. F. Collins. Complete and detailed data for constructing a five to ten mile set, also a ten to twenty-five mile set. 1. A five to ten mile tuned transmitter. 2. A five to ten mile tuned coherer receptor. 3. A five to ten mile tuned auto-detector receptor. 4 and 5. A ten to twenty-five mile tuned transmitter. 6. A ten to twenty-five mile tuned coherer receptor. 7. A ten to twenty-five mile auto-detector receptor. 80 pages, 63 illustrations.

PLANS AND SPECIFICATIONS FOR WIRELESS TELEGRAPH SETS, Part I, by A. Frederick Collins. Complete and detailed instructions for making an experimental set, also a one to five mile set. 1. An experimental transmitter. 2. An experimental receptor. 3. A one to five mile transmitter. 4. A one to five miles coherer receptor. 5. A one to five mile auto-receptor. 55 pages, 37 illustrations.

MODEL AEROPLANES.

MODEL FLYING MACHINES, THEIR DESIGN AND CONSTRUCTION. By W. G. Aston. Contents of chapters:—1. General principles and their application. 2. Power. 3. Supporting surfaces. 4. Screws, and how to make them. 5. Tails and elevators. 6. Fins. 7. Designs. With a number of examples of monoplane, bi-plane, tandem bi-plane and tri-plane models. 8. Dirigibles. 9. Helicopters. 10. Ornithopters. 11. Winding apparatus. 12. Compressed air motor. A first-rate book for Model Makers, 125 pages, 95 illustrations, 12mo. boards, postpaid, for 55c.

MODEL GLIDERS, BIRDS, BUTTERFLIES AND AEROPLANES. How to Make and Fly Them. A booklet with one large sheet containing twelve butterflies and two birds in colors and material for making a small card-board Model Aeroplane Glider. Complete in folder, postpaid, for 55c.

MODEL AEROPLANES, HOW TO BUILD AND FLY THEM. By E. W. Twining. Consisting of one booklet and five large scaled drawings for three Twining Models, two of them being of the Bi-plane Glider type. Complete in folder, postpaid, for 55c.

THE AEROPLANE PORTFOLIO. By D. Ross Kennedy. Containing nine sheets of scale drawings of the following celebrated Aeroplanes: Bi-plane type—Wright, Farman, Voisin, Cody, Her-ring-Curtis. Monoplanes—Rep. Antoinette, Santos Dumont, and Bleriot. Each of these machines are here shown in End View, Plan and Elevation. Including booklet which contains a description of each machine. This timely set of drawings should prove of value to everyone interested in this important new industry. The complete set in folder, postpaid, for 55c.

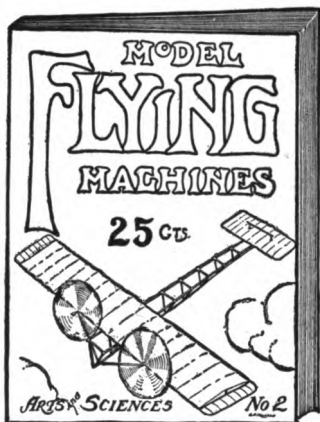
THE PERCY PIERCE FLYER. A large scale drawing of this prize-winning Monoplane. With all measurements and details showing a front elevation, a side elevation and a top elevation; with 8-page descriptive booklet of particulars postpaid, 15c.

Price, 25c. Each.

HOW TO BUILD A 20-FT BIPLANE GLIDING MACHINE, that will carry a man. By A. P. Morgan. A practical handbook on its construction and management. Enabling an intelligent reader to make his first step in the field of aviation with a comprehensive understanding of some of the principles involved. Fully illustrated with detailed drawings. Contents of chapters: 1. The frame work assembling and finishing the wood. 2. Covering the planes, laying out the fabric and fastening it. 3. Trussing, fastening the tie-rods and trueing the glider. 4. Gliding flight, the principles involved, instructions and precautions. 5. Remarks. 60 pages, 31 illustrations.

Model Flying Machines

HOW TO BUILD AND FLY THEM



Price 25 cents Postpaid

Thousands of young men and boys have formed Model Aero Clubs and organized Flying Contests throughout the country.

"Model Flying Machines" of the Arts and Sciences series is the only book giving reliable data and instructions for the construction of practical Model Aeroplanes.

If you are a Beginner, this is the book you ought to have. It will start you right. It tells how to build seven different types of machines, starting with the simplest Monoplane and finishing with several Long Distance Racing Models.

If you are interested in Model Aeroplaning, this book will prove the one you have been looking for. Gives valuable "Kinks." Tells how to carve propellers, make winders, adjust and fly machines, etc. Fully illustrated with large size, detailed working drawings showing the exact size of each part. Twelve full page plates.

Printed on first-class paper. Heavy cover in three colors. Sent postpaid by return mail upon receipt of 25 cents.

EVERY MODEL AVIATOR OUGHT TO HAVE A COPY.

Will prove interesting
and valuable

Have you ever built and
flown a Model Racer?

If not, you have missed
something

Model Aeroplaning is one of the most fascinating and instructive of sports.

THE AMATEUR'S WIRELESS HANDY BOOK



**YOU CANNOT AFFORD TO
BE WITHOUT THIS BOOK**

If you want to be an expert and an authority you must surround yourself with all available aids and helps. You have one of the best in the **AMATEUR'S WIRELESS HANDY BOOK**.

It contains over 2200 calls of Wireless Stations, including all land stations ship stations the U. S. Army and Navy, and all amateurs licensed to date of publication. Every registered station of the U. S. is included. They are all there. All the calls are classified alphabetically. The list is the most reliable and complete in existence. All obsolete stations have been abolished. All corrections and changes have been made from the official lists.

But, that is not all.

Price, 25 Cents, Postpaid

Pages with spaces to fill in **names, call letters, etc.**, make it possible to keep an accurate record of nearby amateur stations.

The *Codes*, both *Morse* and *Continental*, are shown in the form of two large full page charts printed in heavy black type so that they can be read from a distance.

A *Beginner's Speed Chart* of both Codes so arranged that the codes may be quickly learned or consulted is provided.

All the *Abbreviations* used so constantly by the wireless operator to save time and labor are included. There are a couple of pages of them.

And last but not least

Over 100 large hook-ups of wiring diagrams fully illustrated in a concise and clear manner. Loop and straightaway aeriels, grounds, helixes, spark gaps, anchor gaps, leyden jars, induction coils, transformers, keys, aerial switches, tuning coils, loading coils, loose couplers, variometers, fixed condensers, silicon, electrolytic, carborundum, perikon and audion detectors, telephones, potentiometers, etc., you can find them all and how to connect. A hook-up for any set accompanied by full explanation. None are missing. They are all there. There are no two alike.

The most complete and reliable data ever collected. The result of thousands of experiments by some of the most famous wireless experts in the country.

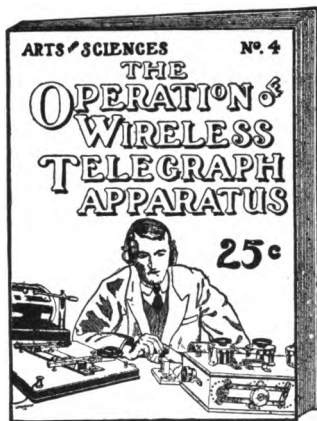
Send now before the supply is exhausted or you forget. You will be sorry if you don't.

Sent anywhere post-paid for 25 cents.

Note: This book is always kept up-to-date by frequently issuing new editions. Send for the latest copy.

The Operation of Wireless Telegraph Apparatus.

By A. B. Cole



Price, 25 Cents, Postpaid

DO your Wireless friends come to you for advice on constructing and operating their apparatus or do you go to them for information.

Here is a chance for **YOU** to become the **authority**.

This book is a necessity to every Progressive Experimenter.

It shows how to obtain the very highest efficiency from any station, and how to comply with the law. How to tune, adjust your detector, spark gap, phones etc.

This book was written for the wireless experimenter who has passed the amateur stage, but explains how the beginner also can obtain the very best results from his station. It contains much useful information to this end and many "kinks."

IT SHOWS HOW to receive or send on long or short wave lengths with highest efficiency, to tune for longest distance reception of messages, to use the buzzer test, how to test and connect condensers, receivers, etc., how to use receiving transformers, variometers, etc., all with *highest efficiency* in view.

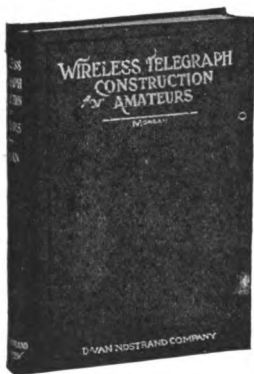
IT ALSO DESCRIBES the construction and use of a simple, inexpensive wave meter to tune the station to any desired wave length, and tells how to obtain a *sharp* wave and a *pure* wave.

EXTRACTS FROM THE LAW are also given in such a manner that they are easily understood.

If you want to get the best results from your station **this is your opportunity.**

Build Your own Wireless Instruments

Complete Up-to-the-Minute Authentic Practical



WIRELESS TELEGRAPH CONSTRUCTION FOR AMATEURS

By Alfred Powell Morgan

220 Pages

163 Illustrations

Price \$1.50 postpaid

Handsomely bound in silk cloth

THOROUGHLY up to date and unusually complete. Gives in minute detail, full directions for constructing wireless apparatus and various outfits capable of receiving from 100 to 1,500 miles and transmitting 3 to 100 miles. Also clearly explains the purpose and action of each instrument. Directions for Operating and Adjusting, etc.

A SPLENDID TREATISE OF WIRELESS ALONG CONSTRUCTIVE LINES.

CONTENTS OF CHAPTERS.

I.—Introduction. II.—The Apparatus. III.—Aerials and Earth Connections. IV.—Induction Coils. V.—Interrupters. VI.—Transformers. VII.—Oscillation Condensers and Leyden Jars. VIII.—Spark Gaps or Oscillators. IX.—Transmitting Helixes. X.—Keys. XI.—Aerial Switches and Anchor Gaps. XII.—Hot Wire Ammeter. XIII.—Oscillation Detectors. XIV.—Tuning Coils and Tuning Transformers. XV.—Receiving Condensers. XVI.—Telephone Receivers and Headbands. XVII.—Operation.

ENDORSED BY WIRELESS CLUBS THROUGHOUT THE COUNTRY AS BEING THE MOST PRACTICAL BOOK PUBLISHED ON WIRELESS.

The value of this book has been greatly increased by the addition of much new subject matter and many illustrations of recent interest.

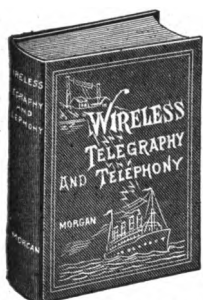
The new text explains fully how to build the most recent forms of Quenched Gaps, Rotary Gaps, Dough-Nut Tuners, Kick-back Preventers, Audion Detectors and numerous other instruments, accompanied by dimensioned working drawings. Several very interesting and instructive photographs have been included.

If you are interested in Wireless you need this book

Wireless Telegraphy and Telephony Simply Explained

By ALFRED P. MORGAN

A NEW BOOK by the author of "Wireless Telegraph Construction for Amateurs."



This is undoubtedly one of the most complete and comprehensive treatises on the subject ever published, and a close study of its pages will enable one to master all the details of the wireless transmission of messages. The author has filled a long-felt want and has succeeded in furnishing a lucid, comprehensible explanation in simple language of the theory and practice of wireless telegraphy and telephony.

The book treats the subject from an entirely new standpoint. Several very novel and original ideas have been carried out in its making. It is well illustrated by over one hundred and fifty interesting photographs and drawings. All diagrams have been made in perspective showing the instruments as they actually appear in practice. The drawings are carefully keyed and labeled. Many of the photographs are accompanied by phantom drawings which reveal the name and purpose of each part.

It is a book which the wireless experimenter cannot afford to be without. It will prove even more valuable to the layman.

Among the contents are: **Introductory. Wireless Transmission and reception. The ether. Electrical Oscillations. Electro-magnetic waves. The means for radiating and intercepting electric waves. Aerial Systems. Earth Connection. The Transmitting Apparatus. Current Supply. Spark Coils and Transformers. Condensers. Helixes. Spark Gaps. Anchor Gaps. Aerial Switches, Etc. The Receiving Apparatus. Detectors, etc. Tuning Coils and Loose Couplers. Variable Condensers. Tuning and Coupling. Directive Wave Telegraphy. The Dignity of Wireless. Its applications and service. Wireless in the army and navy. Wireless on an aeroplane. How a message is sent and received. The Wireless Telephone. The Ear. How we hear. Sound and Sound Waves. The Vocal Cords. The Structure of Speech. The Telephone Transmitter and Receiver. The Photophone. The Thermophone. The Selenium**

Handsomely bound in cloth with embossed cover

Postpaid, \$1.00

TWO MODERN WIRELESS CONSTRUCTION BOOKS

OF THE

Arts and Sciences Series

are now in preparation. The exact titles have not been decided on as yet. These books will be Parts I and II, and will describe in Part I the construction of simple and advanced experimental sets. Part II will describe the most approved types of design and construction of larger and long distance sets of semi-professional character.

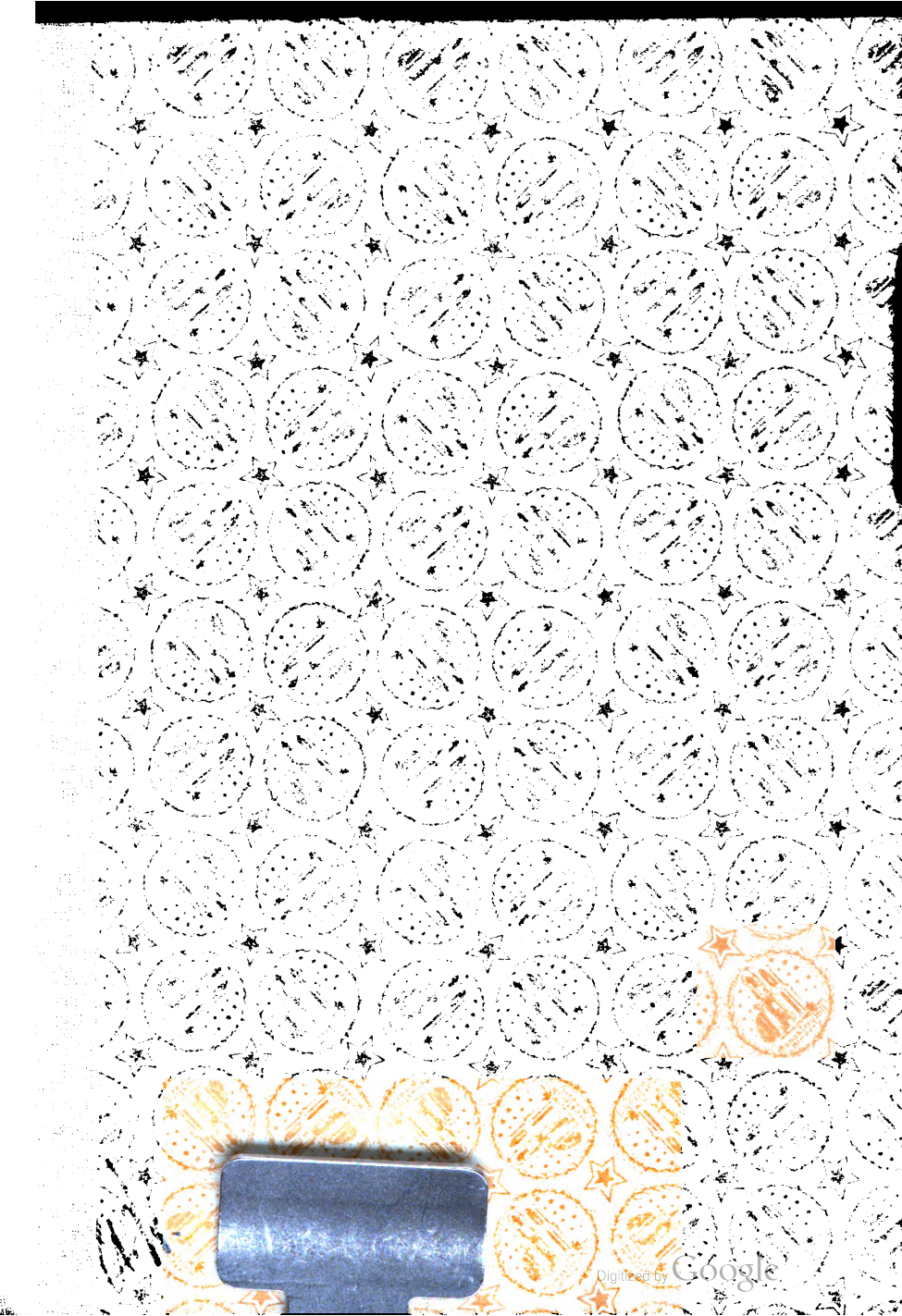
These books will probably be ready about July 15, 1914. If interested, send us a post card to that effect, and when the books are ready, we will send you a circular giving full description.

There are no up-to-date 25 Cent construction books on the market at the present time, and these will fill a long felt want. They will be written by Mr. A. P. Morgan, who is known to every well posted amateur as one of the best writers in this line.

Cole & Morgan, Publishers

P. O. Box 1473

NEW YORK, N. Y.



UNIVERSITY OF CHICAGO



72 757 329