

STARTS TODAY POLICE FILE ★ ANDY SUMMERS

see p.26

Look-in



Junior TVTimes No.14 week ending 29 March 1980 Every Thurs. 13p

TOP PICTURE STRIPS!

★ Sapphire & Steel ★ Mork
& Mindy ★ Battlestar
Galactica ★ Worzel
Gummidge
★ Charlie's Angels
★ Benny Hill
& The Smurfs!
are all inside!

Special pop
feature:

**HEAVY
METAL
PLUS
DOUBLE
PAGE
COLOUR
PIN-UP!**

**GREAT
COMP:
MANY
PRIZES**
see p.11

**BRIAN
MOORE'S
SPORTS
ARENA**
● **KEVIN
MABBUTT**



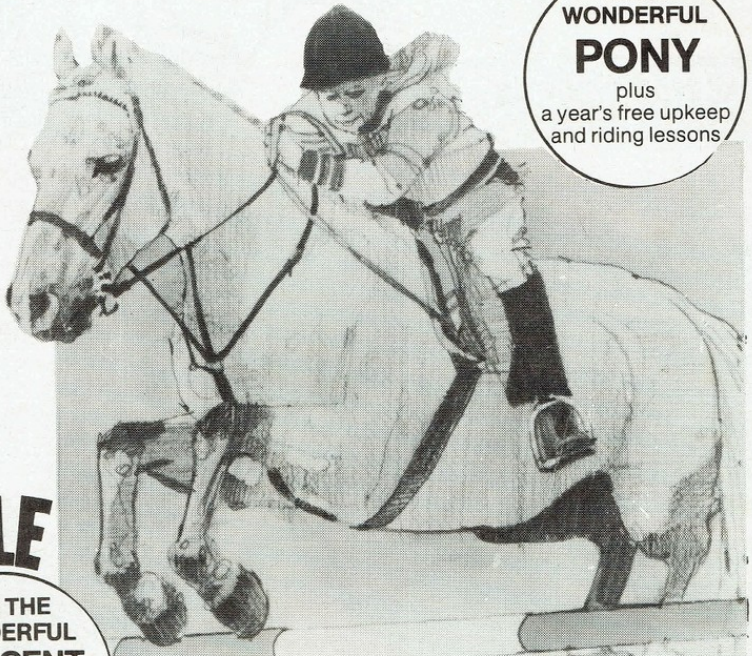
WIN A WONDERFUL PRIZE

in the W.H. Smith Win a Wonder Competition

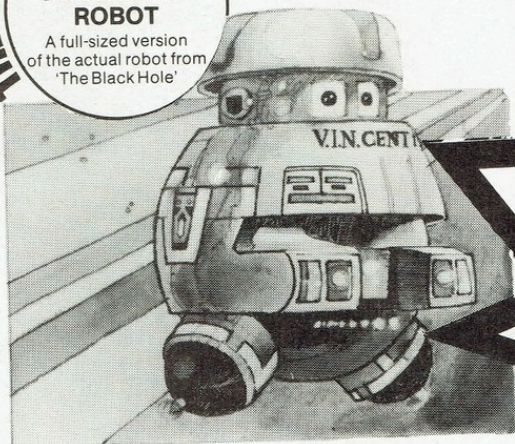
WIN A
WONDERFUL
PONY
plus
a year's free upkeep
and riding lessons



WIN A
WONDERFUL
TRIP TO
WALT DISNEY
WORLD
and see the film
'The Black Hole'
in Florida.



THE BLACK HOLE
WIN THE
WONDERFUL
V.I.N.CENT
ROBOT
A full-sized version
of the actual robot
from 'The Black Hole'



Feeling lucky?

If you are under 16 this is your big chance to win your very own pony with a year's stabling, an eight day holiday in Florida with a visit to Disneyworld, or a full size version of the V.I.N.CENT Robot from 'The Black Hole', or one of our hundreds of runner-up prizes.

Pick up an entry form next time you are in W.H. Smith, they'll be available until 3rd May 1980. Then all you have to do is simply spot the difference between two pictures, complete a simple poem, and send it off with a till receipt. And, who knows?

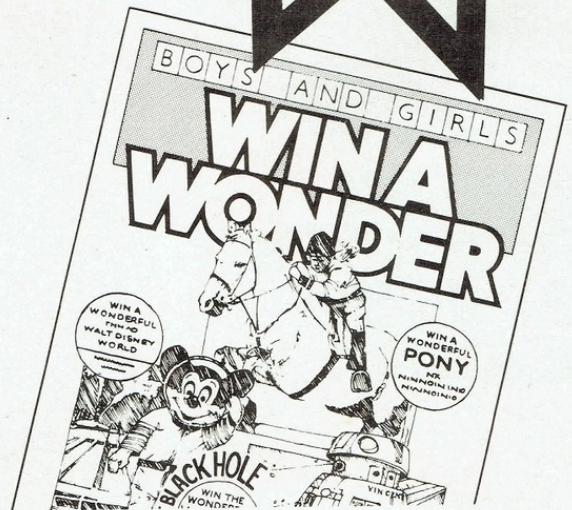
First Prizes

- *A pony with one year's free stabling, riding kit, tack, one year's riding lessons and one year's membership of your local Pony Club.
- *An eight day holiday for two in Florida, plus £500 spending money and tickets to see 'The Black Hole' while you are there.
- *A full size version of the V.I.N.CENT robot from 'The Black Hole'.

Runner-up prizes

- *200 L.P. records of the original soundtrack from 'The Black Hole'.
- *50 Louis Marx V.I.N.CENT robots.
- *50 Sindy Riding Sets.

WHSMITH 

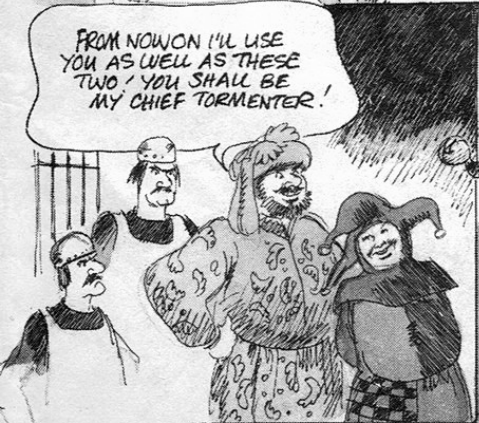


Jest a minute — it's Cousin Dick!

THE BENNY HILL PAGE



IN DAYS OF OLD A COMEDIAN COULD CATCH A COLD WHEN PERFORMING BEFORE AUDIENCES IN DRAUGHTY CASTLES. BUT DICK THE WIT GOT MORE THAN THAT WHEN HE WAS DOING HIS ACT IN FRONT OF A MIDDLE AGE SPREAD....



This week Brian Moore's Sports Arena looks at two of football's outstanding young brothers, Bristol City's Kevin Mabbutt and Bristol Rovers' Gary.

THE CREAM OF BRISTOL!

Bristol City would be the first to admit that they don't rank amongst the most fashionable clubs in the country. You could have a struggle on your hands if you were asked to name the players that make up the Robins' first team. Perhaps this is the reason why young Kevin Mabbutt isn't too well known outside of Ashton Gate. Yet this young star had the chance to go to any of the top clubs as a youngster but chose instead to prove himself with one of his local sides, Bristol City. His father Ray, who had played for Bristol Rovers and Newport, undoubtedly helped Kevin to make this big decision.

Kevin had made a big impact at England Schools and Youth level but his father knew only too well that there is a tremendous difference between that level of soccer and the professional game. He felt that his eldest son would stand a better chance of making it in the game if he signed for a less fashionable club (at that time City were a run-of-the-mill second division outfit). With a little luck, he would get a quicker opportunity to play first-team football, and the young player could still live at home, with all the security and ready advice that goes with it. In time, Dad's advice turned out to be absolutely right. Kevin won a first-team place and started getting amongst the goals with the notable achievement of hitting a hat-trick against Manchester United at Old Trafford, one of the teams he could have gone to as an apprentice!



There are several well known father and son combinations in soccer; John Bond and Kevin, Johnny Hart and Paul of Leeds, Mel Charles and Jeremy of Swansea, Ken and Peter Barnes, of West Brom; the list is endless, but proud Ray Mabbutt has two sons playing league soccer. In addition to Kevin there's Gary, who turns out for local rivals Rovers. Another young international, Gary can play with great authority in just about any position on the field!



Bristol City manager Alan Dicks has often likened his club to Ipswich and Norwich and unfortunately for the Robins they may be about to emulate the East Anglian pair in a more unfortunate way. Both Ipswich and Norwich were relegated after their first taste of the big time and had time to lick their wounds before climbing back to establish themselves. Operating on limited resources the club couldn't withstand the transfer of Gary Collier to Coventry, the disappointing form of Joe Royle

and the out-of-touch performances of imports Meier and Jantunen. But most of all the loss of Norman Hunter (left) to Barnsley and all his vast first division experience that went with him couldn't be covered up. Like Norwich and Ipswich, City must rely on developing its own talent and the city of Bristol must get behind both clubs if they want to see the best clubs in the country coming to Ashton Gate and Eastville!

Sports ARENA PRESENTED BY BRIAN MOORE



Next week: The Boat Race, and European Championship Table Tennis.



Kevin Mabbutt

Sapphire makes time stand still . . .



SAPPHIRE & STEEL

ANNA BROWN, EXPLORING THE HIGH MOORS WITH HER BROTHER, MARTIN, COMES UPON A LONG DISGUISED RAILWAY TRACK. SHE FINDS AN ANCIENT BUCKLE, AND THE EVIL FORCE OF TIME TAKES HER ON TO A TRAIN — A TRAIN OF THE PAST, DESTINED FOR RUIN! SAPPHIRE SEES EVERYTHING...



LET TIME STAND STILL! THE TRAGEDY MUST BE STOPPED!

ONLY ANNA, IN THE CONTROL OF EVIL ITSELF, REMAINS UN-AFFECTED...



WHAT'S HAPPENING...? NANA! TELL ME!



ANNA! SHE WAS YOUR GRANDMOTHER! BUT SHE PRACTISED WITCHCRAFT...

WHO ARE YOU...?

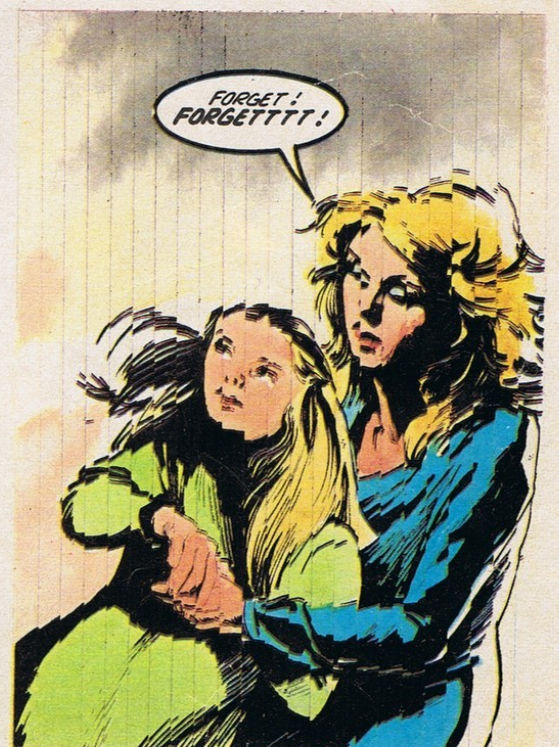


I'M SAPPHIRE! BELIEVE ME! SHE WAS EVIL... AND THAT'S WHY TIME HAS TRIED TO TAKE YOU... A NEW YOUNG LIFE TO MAKE HER LIVE AGAIN!

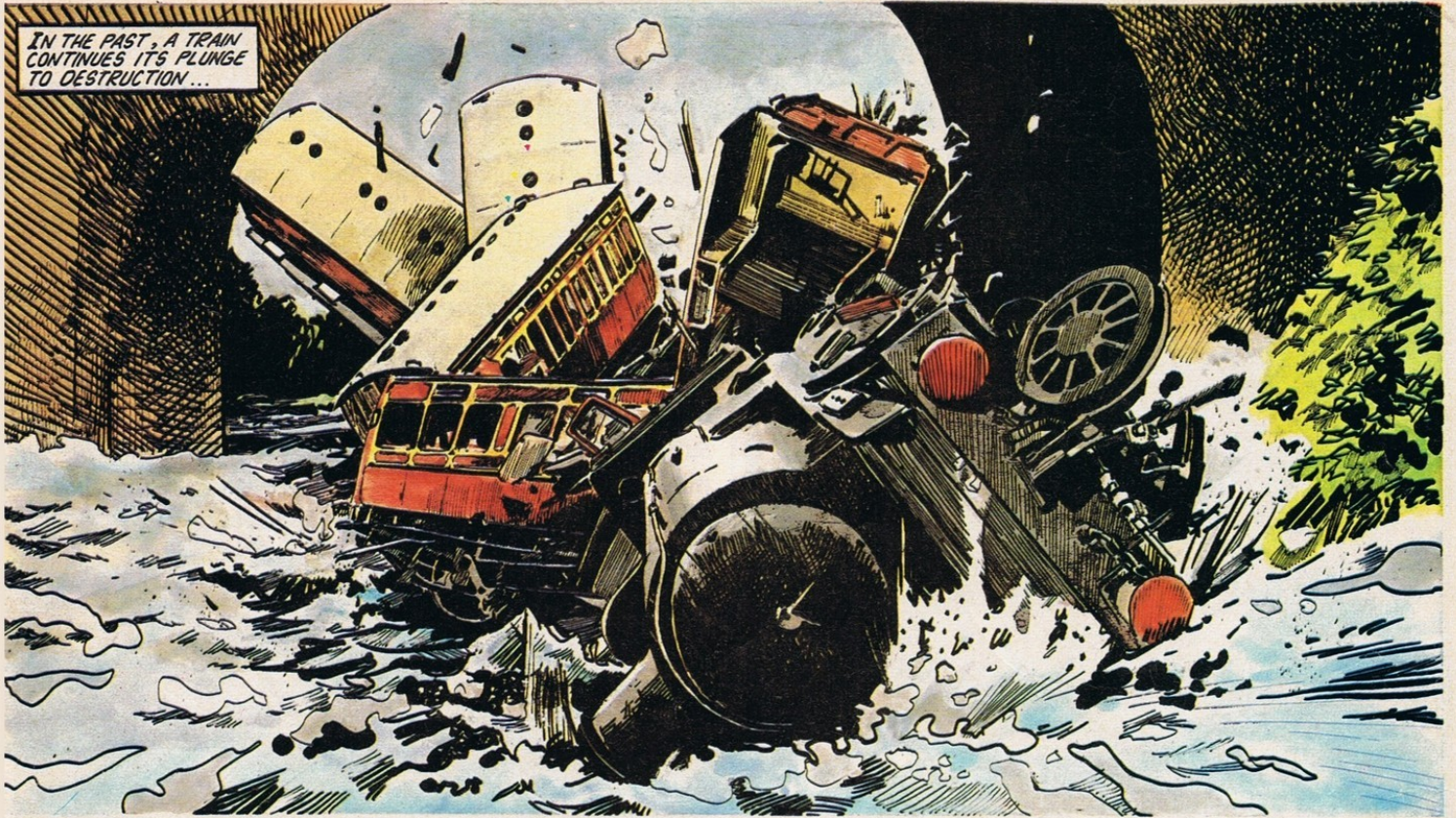


MY NANA...

YOU'LL FORGET! YOUR OWN MOTHER — HER DAUGHTER — SHE NEVER KNEW...



FORGET! FORGETTTT!



IN THE PAST, A TRAIN CONTINUES ITS PLUNGE TO DESTRUCTION...



AND IN THE PRESENT...

STEEL...?

THEY'RE WAITING FOR HER, SAPPHIRE. IS EVERYTHING OKAY?



THE BUCKLE SHE FOUND TRIGGERED THE WHOLE THING OFF, STEEL...

BROUGHT TIME TO STEAL HER AWAY. WHAT ARE YOU GOING TO DO WITH IT...?



TAKE IT TO OUR OWN PLACE, STEEL. WHERE IT WILL BE HARMLESS. IT MAKES THE EVENTS OF THE PAST LIVE ON ENDLESSLY...



LIKE THIS...?

EXACTLY. TIME WOULD HAVE TAKEN ANNA, TO REPLACE HER OWN GRANDMOTHER. SHE WOULD HAVE BEEN RE-BORN FOR EVIL...



THEY'LL NEVER KNOW...?

HOW CAN THEY? TO THEM, IT'LL ALWAYS SEEM A DREAM. WE'VE SEEN TO THAT...

STEWART'S STARCHART



O	U	N	D	I	N	J	U	R	I	E	S	L
W	A	D	A	O	R	H	O	S	P	I	T	A
S	C	U	T	C	A	R	F	I	R	S	T	A
H	C	R	S	P	R	F	C	O	T	T	O	I
O	I	E	N	I	A	A	L	O	O	W	N	D
C	D	E	N	T	A	M	B	U	L	A	N	K
K	B	L	E	E	D	B	A	N	D	A	C	I
B	U	N	L	D	H	E	S	I	E	G	E	T
U	R	E	E	I	N	E	N	V	S	B	L	A
N	N	K	G	N	I	N	I	E	T	A	P	N
C	S	O	P	G	N	E	N	I	N	E	E	K
O	B	R	A	N	I	C	G	H	T	L	A	E
N	S	C	I	O	U	S	O	O	D	H	E	T

START □ **STOP** □

If there's one thing none of us want it's to be hurt. Mind you, there are times when you get involved in problems even though you are doing all the right things and certainly keeping the Safety First mottos in mind. I've packed a number of things into this week's Starchart all to do with accidents, given clues to all but one of them and even helped a bit with that.

Solve the clues — remembering they are all on an accident theme — and then find the answers in the chart. To do this you start and stop as indicated and link letters to form the words of your answers, moving in any direction except diagonally. That means you can go up, down, backwards or forwards in every word. You use every letter just once — including the prize answer, which could win you a £3 postal order.

Try these clues then; every answer is one word unless indicated differently in brackets.

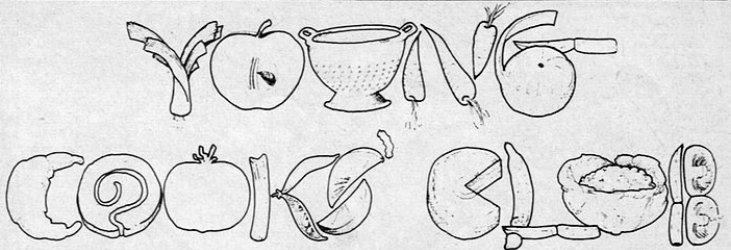
In which you can be knocked down (2); this is also called sticking plaster (2); this would take you to a centre where doctors could treat you; and this would be the place you'd go; they might use these to 'bind' up your wounds; or cover you with this to keep you warm. This indicates you've been cut; while these would show you've been scorched. This would eventually need to be put in plaster (2). This sort of stuff is used as a padding on some wounds. This kind of fright happens when you lose control. Here's where emergency material for immediate treatment is carried (3). This is another name for a bone break. Getting hit by a car could cause the plural of this. This is what the system sustains in an accident. This is a dislocation of sorts; while if you are this you are knocked out. This is a general term for an injury like a cut; and this is the number you dial in an emergency (3).

Get all that lot and there will be two words left over which, if you've got it, will mean you won't want any medical help at all. Send me those two words only and you might win our prize. Your entry should be sent, on a postcard only, to: Starchart, Look-in, 247 Tottenham Court Road, London, W1P 0AU. The sender of the first correct entry to be pulled from the postbag will receive the prize.



Here are last week's answers

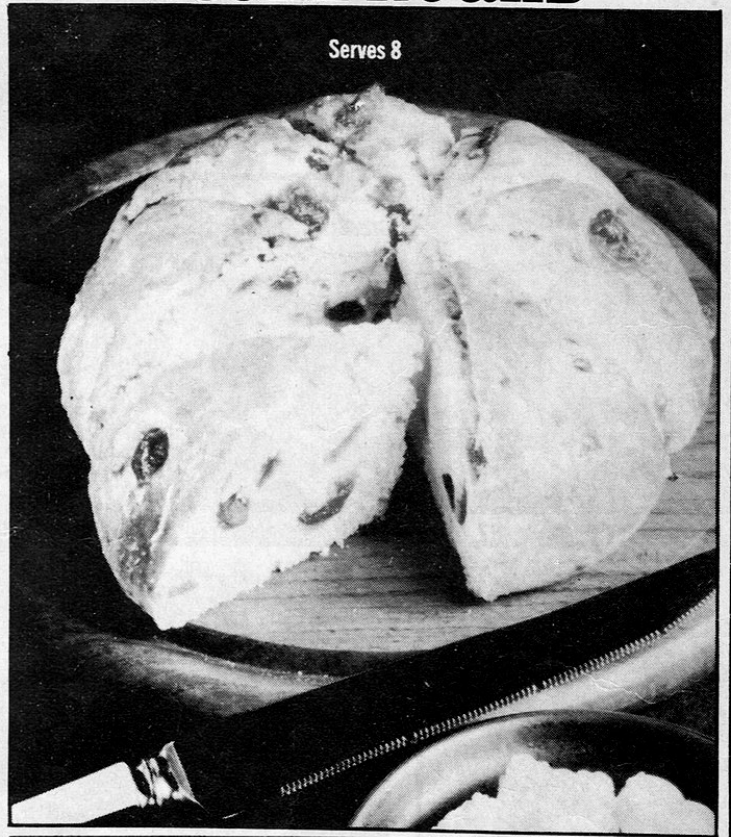
Chicken; Roast Beef; Lamb; Bacon; Beefburger; Curry; Kebab; Meat; Minced meat; Pork; Sausage; Pancakes; Custard; Jelly; Trifle; Potato; Chips; Bread; Loaf; Biscuit; Bun; Cake; Scone; Egg; Tuna; Chocolate; Cornflakes; Cheese.
Star prize answer: Milk.



Introduced by Kathie Webber, Cookery Editor of TVTimes

Scone dough is one of the most easy and versatile mixtures around. It can be used as a pizza base, made into a loaf when you're stuck for bread, or made into cinnamon and sugar filled rolls called pinwheels. Now manufacturers have made scone dough even more easy — all you have to do is add the liquid and anything else you fancy and away you go!

CHERRY AND BANANA SCONE ROUND



Serves 8

500g (1lb) scone mix

5ml (1 teaspoon) lemon juice

1 banana

50g (2oz) glacé cherries

5ml (1 teaspoon) milk

Make up the scone mixture according to the instructions on the packet, adding the lemon juice to the water. Chop the glacé cherries and slice the banana. Stir this into the scone mixture. Shape the mixture into a 20cm (8 inch) round and score it with a knife into eight portions. Brush the top with milk. Leave for 10-15 minutes. Bake in a hot oven, 200 deg. C. (400 deg. F.) or gas mark 6 for 20-25 minutes. Cut into eight portions and serve with butter, jam or honey.

WORZEL GUMMIDGE



BECAUSE AUNT SALLY WON'T RETURN HIS AFFECTIONS, WORZEL HAS BEGGED A 'DREAMING' HEAD FROM THE CROWMAN, SO THAT HE CAN ENJOY AT LEAST SOME IMAGINARY ROMANCE. BUT HE'S PUT IT ON DURING THE DAYTIME, AND NOW HE'S HAPPILY SLEEPWALKING, RIGHT TOWARDS THE VILLAGE OF SCATTERBROOK!



JOHN THINKS QUICKLY...

DAD! RACE YOU TO THE VILLAGE HALL! COME ON!

NO! IN THE MOOD FOR SPORT, EH? RIGHT!



MMMMM. GI'S A KISS, AUNT SALLY! ZZZZ! SMASHIN'!



ZZZZZ

NICE ONE! TRUST YOU TO LEAVE ME TO COPE!

IN HIS DREAM, IT FEELS LIKE THE BRICKS PRESSING AGAINST HIS CHEST...



WORZEL! WAKE UP! WORZEL!

AHHH! THE OL' WISHIN' WE'LL! COME AN' LEAN OVER WITH ME, AUNT SALLY!

DROP A PENNY IN AN' MAKE A WISH, MY DEAR!



WHY, YOU KNOW I DON'T HAVE ANY MONEY, WORZEL, LOVE!



I GOT A SHINY SOVEREIGN WHAT MY LITTLE ROBIN BROUGHT ME! THERE'S A MILLION WISHES FOR US SWEET'EART!

© 1988 by the author. All rights reserved. Worzel Gummidge.



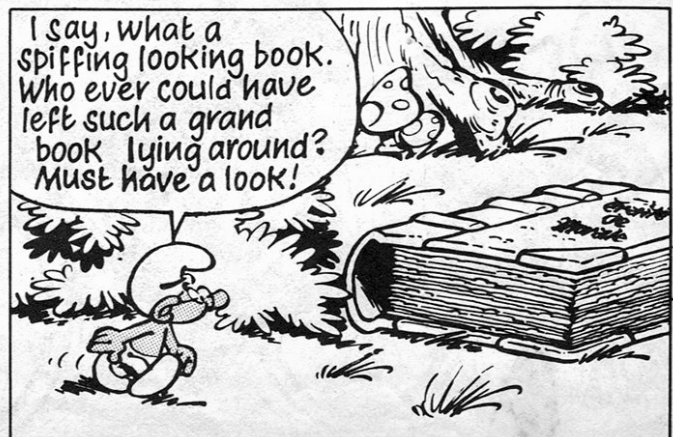
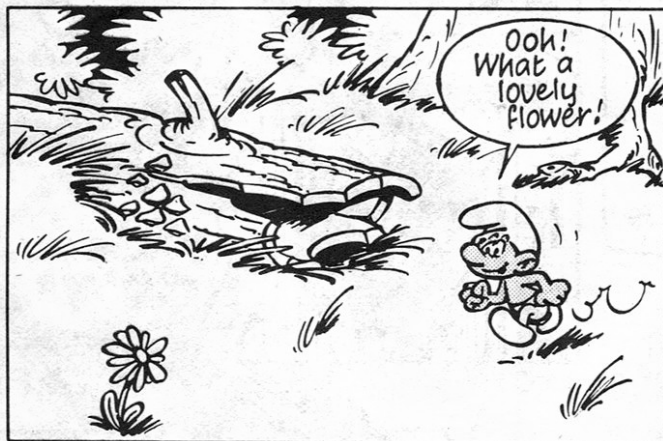
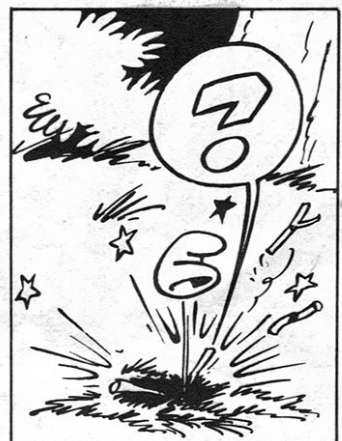
JOHN MANAGES TO SLAP HIS FATHER'S HAND...



BUT ONCE OUTSIDE THE HALL...



MEET THE SMURFS!





Original rock heroes Led Zeppelin



AC/DC, including the late Bon Scott (left)

HEAVY METAL HITS BACK!

IN spite of the troubles in the steel industry, Heavy Metal is booming — again . . .

Heavy Metal music grew out of the trail blazed by British supergroups in the Sixties like The Who (*My Generation* and *I Can See For Miles*), and like Eric Clapton, Jeff Beck, Jimmy Page and Jimi Hendrix who could use technical tricks like feedback and fuzz to distort heavy rock guitar. Heavy Metal music is based on simple guitar and bass riffs but played mainly in unison and cranked up to ear-splitting volume, with brain-scrambling, powerhouse vocals.

In the Sixties, Cream and Led Zeppelin developed heavy rock into a "Heavy Metal sound", drawing from rhythm & blues roots and ex-Yardbirds (an early sixties hit group) for their members. They became two of the most popular rock bands in the world.

One band which took Heavy Metal to its limits (that is, they were very loud!) were Birmingham's own *Black Sabbath* whose high-volume stage presentation and weird associations with occult art thrilled audiences in 1969. In the States, at the same time, there was *Grand Funk Railroad*, originally from Flint, Michigan. Funk first appeared to stunned public audiences at the Atlanta Pop Festival in 1969 and, in spite of bad press and little radio play, their *On Time* album topped the US charts and sold a million. Their next five albums all went gold, and Rod Stewart was heard to describe Funk as "the all-time loud white noise".

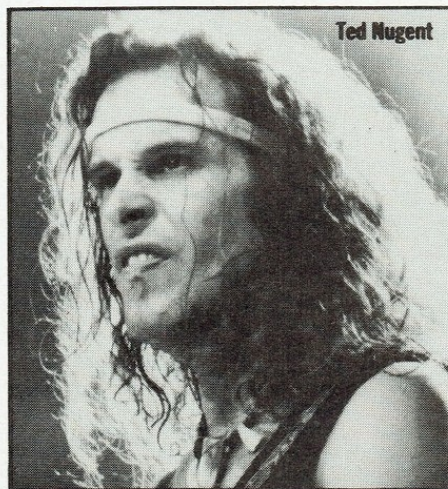
In the Seventies, the popularity of the Heavy Metallists waned slightly, although maintaining a select band of disciples. The popularity in the north of England has never failed, though, particularly around Newcastle, always a stronghold of the style.

With the current revival of Heavy Metal elsewhere in the country, we see a number of new, young bands emerging, like Sheffield's *Def Leppard* who won wide acclaim during their tour as support to *AC/DC* and America's *Sammy Hagar*. Bands like *Iron Maiden*,

Praying Mantis and *Diamond Head* have swept on the scene, resulting in the popularity of the current compilation album *Metal For Muthas*, and the subsequent promotional tour in February.

Britain can still boast the best of the Heavy Metallists — for instance, *UFO*, who were formed in 1970. Their first album went virtually unnoticed in Britain but was picked up by fans in Japan, France and Germany. In Japan, particularly, *UFO* triumphed and their version of Eddie Cochran's *C'mon Everybody* zoomed up the Japanese charts. It's relatively recently that *UFO* have made inroads into the British Heavy Metal scene, and theirs is HM with class. Their version of Elvis Presley's *Mystery Train* astounded many purists with its beautiful acoustic guitar intro, before launching into some tasty electric guitar licks, showing that this band is destined to have a long ride on the new wave of Heavy Metal.

One of the British bands which helped to give the Heavy Metal revival a push was *Motorhead*. Formed from the remnants of *Hawkwind*, *Motorhead* managed to cut their way through the punk punters, often where other rock bands failed.



Ted Nugent

Australia's *AC/DC* have a terrific following in this country and it was with horror that the band's fans learned of lead singer Bon Scott's death recently. In the early Seventies, *AC/DC* gigged around the Australian outback before coming to England to show "us Pommies" how it's done. They were quite a novelty featuring, as they did, the eccentric Angus Young, the wild guitarist with a taste for dressing up as a schoolboy.

Another Heavy Metal guitar-showman is *Ted Nugent* who also has an outrageous style of dress on stage. Born in Detroit, Nugent was a member of the garage band *Amboy Dukes*. His band pursued success in the face of enormous difficulties, particularly with constant personnel changes (Nugent would often sack members of his group.) But Ted — a strong frontman — took the band onward and upward, never being far from the pages of the rock press. They are reputed to have played as many as 150 shows in just one year in the States.

Nugent is, perhaps, one of the all-time characters of HM. He employed extraordinary gimmicks to draw attention to his act. He staged a series of guitar duels with big stars, proclaiming himself "the greatest axeman in the world". His stage costume for these duels was a loin cloth, with Nugent bounding about like the original caveman, sporting a bow and arrow. One of his claims was his ability to shatter a glass ball by the pitch of his guitar, although critics said that when it didn't work, a roadie stood ready discreetly to smash the object for him.

Another extraordinary band is *Kiss* who never allow themselves to be photographed without the outlandish greasypaint decoration they wear on their faces. *Kiss* sprang from New York, at the end of the glam-rock period made popular by David Bowie and Lou Reed. *Kiss* looked as though they'd stepped out of an imaginative comic strip and their act was certainly "explosive", the performance including snow machines, police lights, sirens, rock-firing



DEF LEPPARD



SAMMY HAGAR



JUDAS PRIEST



MOTORHEAD



RAINBOW



RUSH



VAN HALEN



UFO



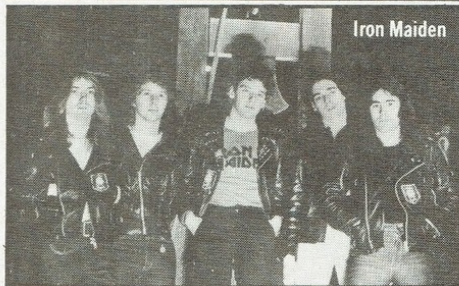
Rock Shows

UPI

UPI



Styx



Iron Maiden



Aerosmith



Meat Loaf

guitars, levitating drums and even a fire-eating bass player. In a short time, Kiss became one of America's hottest in-concert bands. At the moment Kiss are working on their new album and, if you think you're strong enough to take it, you can see them in England in June when they play Wembley arena.

Britain's most popular Heavy Metal band is indisputably **Led Zeppelin**; they're certainly the most-imitated band. Led Zep features the heavy licks of guitarist Jimmy Page, and were formed from the fragments of the Sixties' band, The Yardbirds. A former art student, he is said to have learned guitar by practising the James Burton solos on Ricky Nelson's records and Scotty Moore's guitar work on old Presley singles. As a session man, Page was much in demand and worked with The Who, Them, Kinks, Pretty Things, Rolling Stones, even Petula Clark, Tom Jones and Val Doonican. The band originally went out as the New Yardbirds. Rumour has it that their name Led Zeppelin came from a quip by The Who's drummer, the late Keith Moon who said they'd go down like "a lead balloon".

When Led Zep toured America in 1973 they broke box-office records nationwide, previously held by none other than the Beatles. In Tampa, Florida, for example, 56,000 fans handed over 318,000 dollars to see the band. That one tour grossed three million dollars, and *The Financial Times* reported that Led Zeppelin had worldwide earnings from tours and concerts of 30 million dollars for that year alone.

Of all the Heavy Metal bands, Led Zep epitomise the HM theatrics. In 1975, for instance, their American tour stage-act took in neon-lit signs, laser beams and, at 70,000 watts, the loudest sound system then in rock. 15,000 fans waited over 24 hours for tickets outside New York's Madison Square Gardens. In Boston, similar scenes resulted in a riot causing 75,000 dollars-worth of damage.

They may be over the top, but there will probably never be another band like Led Zep, and, by restricting their album output and public appearances, they have managed

to retain an aura of mystique, attracting huge crowds when they do tour, as witness their Knebworth concert last year.

One of the bands to tour Britain this month has been **Judas Priest**. The arrangements and subsequent publicity met a hitch when the master tape for their new album was stolen and, within hours, a ransom for it was demanded for 100,000 dollars. The band had spent the whole of January recording that album in the South of France at an estimated cost of £35,000. The master tape was flown to New York for mixing in early February and within days it disappeared (although it has since been retrieved!). But the tour plans went ahead taking in 14 dates, although — alas — without that long-awaited new album.

One of the currently popular new Heavy Metal bands is **Iron Maiden**. Their rise to fame has been meteoric. They built up a loyal following in East London, initially making a 3-track demo which was eventually put out as a do-it-yourself souvenir for their fans. Originally 1,000 copies were pressed but demand called for re-pressings of around 14,000 copies. Last November, Iron Maiden signed a contract with EMI, and their single, **Running Free**, has been doing well. Meanwhile, they are recording their debut album for April/May release.

Other concerts coming up include **Styx**, described as the leading "American pomp-rockers" who have just had their first British single hit with the non-heavy metal **Babe**. They will be playing two London concerts in

June as part of their European tour.

Recent activity from **Robin Trower's** interesting three-piece has pleased their confirmed following of fans. Trower's undeniably Hendrix-influenced guitar and the fine vocals of Jimmy Dewar (ex-Stone the Crows) made a big impact in America but not so much here initially, although lately the band has attracted more followers. Their new album **Victims of the Fury** with Trower on guitars, Jimmy Dewar on bass and vocals, and Bill Jordan (ex-Sly Stone) on drums should put them well back among the favoured Heavy Metallists here.

In a few months, an unknown band called **Def Leppard** leapt from the small, pub-band circuit to the big venues like the Hammer-smith Odeon. Originating from Sheffield, Def Leppard financed their own LP, which is said to have sold 3,000 copies. When Phonogram signed them, a single **Wasted** was issued. Still very young, Def Leppard have played together since they were kids and are all accomplished musicians. Rick Allen was taught by master drummer Kenny Slade, Pete Willis has played bass since he was six, while Steve Clark has learned classical guitar since he was 16. Def Leppard are probably the most-tipped HM newcomers for the top.

Switch on the radio and one of the most popular singles at the moment is **All Night Long** by **Rainbow**, led by Ritchie Blackmore, who is no stranger to a bit of controversy. He originally found acclaim as guitarist with **Deep Purple** (an important British HM band of the late 60s and early 70s) and out of DP's break-up came Ritchie Blackmore's **Rainbow** and David Coverdale's **Whitesnake**.

It's been a rough ride for Rainbow which has never really had a settled line-up. After an absence of 18 months, they returned last September supporting American Heavy Metallists **Blue Oyster Cult**. The current Rainbow is Graham Bonnet (vocals), Roger Glover (bass, also ex-Deep Purple), Don Airey (keyboards), and Cozy Powell (drums).

Blackmore has a reputation for smashing up his guitars on stage which, while it wows



Whitesnake



Kiss



Uriah Heep

some of the "headbangers" in the audience, only makes many young, semi-pro musicians present weep as they see £2,000-worth of guitar go the way of the dustbin. But this, folks, is Heavy Metal, and your mutha certainly wouldn't like it. Blackmore says, "I guess I usually break a guitar if I'm having a good time."

Uriah Heep broke on the rock scene in 1970 to a barrage of hostility from the rock press — one American critic desperately wrote, "If this group makes it, I'll have to commit suicide..."

The band have been constantly dogged by troubles with personnel and management. The appointment of John Sloman (ex-Lone Star) as lead singer was announced last November ending an unaccustomed period of inactivity and Heep's 10th anniversary tour of the UK went ahead in February, coinciding with their new album **Conquest** and the current single **Carry On**.

And that's not all... in the wake of the revival of Heavy Metal, a lot of HM old-stagers have come out of hiding while the new breed have started to climb — **Pat**

Travers (due here soon), **Sammy Hagar**, **Whitesnake**, **Aerosmith**, **Molly Hatchett**, **Styx**, **Boston**, **Foreigner**, **Meatloaf**, **Rush**, **Girl**, **Gillan**, **Saxon**, **Witchfynde**, **Angelwitch**, **Marseille** and **Praying Mantis** — all to become senior and junior executives in the new international Heavy Metal industry.

Whatever happened to Heavy Metal? It never went away — it just needed the current application of a little heat treatment to bring it back to full strength. Looks like we're in for a very hot, heavy summer...

Chrissie Murray

ADVERTISEMENT

The Fun Event of the Year

THE 1980 NATIONAL BOYS AND GIRLS EXHIBITION

at Alexandra Palace, Wood Green, London

from Thursday April 3 through to

April 9 featuring **FESTIVAL OF FUN INTERNATIONAL CIRCUS**

(3 TIMES DAILY)

Plus Competitions — Displays — Giveaways — Junior Discovery Show, etc.

B.B.C. RADIO ONE SPACE INVADERS COMPETITION WITH

TOP D.J.'s APPEARING EVERY DAY. BRITISH SCALEXTRIC CHAMPIONSHIPS — compete for the championship on the largest layout in the World —

See the High Fire Diver 'Don Lindbergh' diving 70' in flames into 6' of water every day —

COME AND MEET 'THE DOLLOP FAMILY' OF LARGE DINOSAURS, THE CHARACTERS AND BOOKS OF 1980 — AND BE SPRINKLED WITH DOLLOP DUST — ITS FUN ALL THE WAY

EVERY DAY!!!

OPEN FROM 11 am to 7 pm EACH DAY

ADM: £1.20 adults 70p children NO ADULTS ADMITTED UNLESS ACCOMPANIED BY A CHILD

Listen for the new Dollops record to be released in April



CHARLIE'S ANGELS

ART CONNOISSEUR ARAZ SHAMURIAN IS HEAD OF A DRUG-SMUGGLING OPERATION - EXPORTING PAINTINGS DAUBED OVER SEALED COATS OF PURE HEROIN APPLIED TO THE CANVASES. EVEN AS CHARLIE'S ANGELS RUN THE SCHEME TO EARTH, SHAMURIAN'S HIT-MAN, ETTORE, CLOSES IN!



SAY YOUR PRAYERS, LADY!

THEN...

GURRRRGH!



KELLY GIVES THE KILLER NO CHANCE TO GET ON BALANCE!



THAT'S FOR YOU, MISTER!



WHAT D'YOU SAY, GIRLS?

IS - THANKS ENOUGH..?

NEATO KELLY! WHO IS HE..?



ETTORE DENTICI. HIS CARD SAYS HE'S A BUTLER, WOULD YOU BELIEVE.

JUST LIKE AN OLD-FASHIONED PLAY! THE BUTLER DID IT! OR AT LEAST, HE TRIED...



ROPE FROM A CRATE SECURES ETTORE WHERE HE LIES, AND THE ANGELS TURN THEIR ATTENTION TO THE CRATED PAINTING...

HE'LL KEEP FOR THE POLICE!

WE'LL GET THIS DIRECTLY TO THE FBI, ONCE WE'VE CALLED CHARLIE...

LATER, AT SHAMURIAN'S APARTMENT...

GOOD MORNING, MY NAME'S BOSLEY.

SHOULD I KNOW YOU?

I'LL SEND YOU A COPY OF MY AUTOBIOGRAPHY. I SHOULD HAVE WRITTEN IT BEFORE YOU'RE DUE TO COME OUT OF JAIL...

WH-WHAT THE BLAZES DO YOU MEAN...?

THE FEDS ARE BUSY SCRAPING THE PAINT OFF YOUR PICTURE, SHAMURIAN.

AND ETTORE'S SINGING LIKE A CANARY TO SAVE HIS OWN NECK!

UGGGHHH!

WHEN SHAMURIAN HAS BEEN LED OFF, ONLY ONE THING REMAINS TO BE DONE...

SOME DRUG-KING IN LONDON'S GONNA BE WAITING TO COLLECT A PAINTING, GIRLS. NOW, CHARLIE DOESN'T RECKON HE OUGHT TO BE DISAPPOINTED...

GO ON, BOSLEY...

SO...

HEY, THIS COULD TURN OUT TO BE A WORK OF GENIUS!

PITY WE CAN'T GET SHAMURIAN OUT TO ADMIRE IT!

DON'T WORRY, ANGELS! I'LL LET YOU KNOW WHAT THE ENGLISH CONTACT THINKS OF IT WHEN HE'S BEEN NAGGED BY THE LIMEY DRUG-SQUAD IN SOUTHAMPTON! MEANWHILE - YOU'RE IN MY GALLERY OF FAME!

THANKS, CHARLIE!

An exciting new story starts next week.

The Mortimer family outside their 'castle':
 (l to r) Barry (Simon Gipps-Kent), Nessie
 (Annette Ekblom), May (Jean Rimmer), Ellen (Louise Olley),
 Norman (David Neal) and Geoff (Marcus Francis).



Next Wednesday, 2nd April, at
 4.45 pm, an exciting new drama series
 from Southern Television begins . . .

NOAH'S CASTLE

The television series has been adapted from the book of the same name by award-winning author John Rowe Townsend. Set in the not-too-distant future, it tells the story of the Mortimer family and their struggle for survival in a Britain where inflation has reached mammoth proportions (a tin of sardines, for instance, is priced at £200) and food supplies are running out. The head of the family, shoe-shop manager Norman Mortimer, is determined that his wife, May, and their four children will survive the crisis and he buys an old large house in which to store food for them.

Look-in's Terry Tatnell recently spoke to David Neal, the actor who portrays Norman, about the series and his role.

"I first read the book," said David, "during the 'winter of discontent', when we had all those strikes around the Christmas before last, and I really believed that it was happening, that it was a *Noah's Castle*

situation. My fears haven't receded since having done it, I still feel that it could be just around the corner. It's a very frightening thought and I think, hopefully, that this series will be a kind of warning. Perhaps I'm being over-serious about it, but I think children will see it much more clearly than adults will and to me it's the best way to put this idea forward, as a children's story. It's a very powerful novel and I hope the series will be as powerful."

Why was this particular book chosen for a television series? Executive producer Lewis Rudd explained:

"Actually, it was our script editor, Tony McLaren, who found the book, and we thought it would be extremely challenging and worthwhile to adapt it for television.

"I think it's worthwhile because it's a subject which is, I feel, close enough to reality to make people think about it. It's also topical, and has been for the past four or five years with the high rate of inflation, and I think it's interesting to examine how people react under stress."

How did David Neal get chosen for the part?

"Well," he replied, "Colin Nutley, the producer, with whom I'd worked on another Southern TV series, *The Flockton Flyer*, first asked me to read *Noah's Castle* with a view to playing the part of the father, to see what I thought. I was very excited by it and felt it would be a great challenge."

As many of you may remember, David played the part of a father in *The Flockton Flyer*, too, called Bob. Did he find that they were very different from each other?

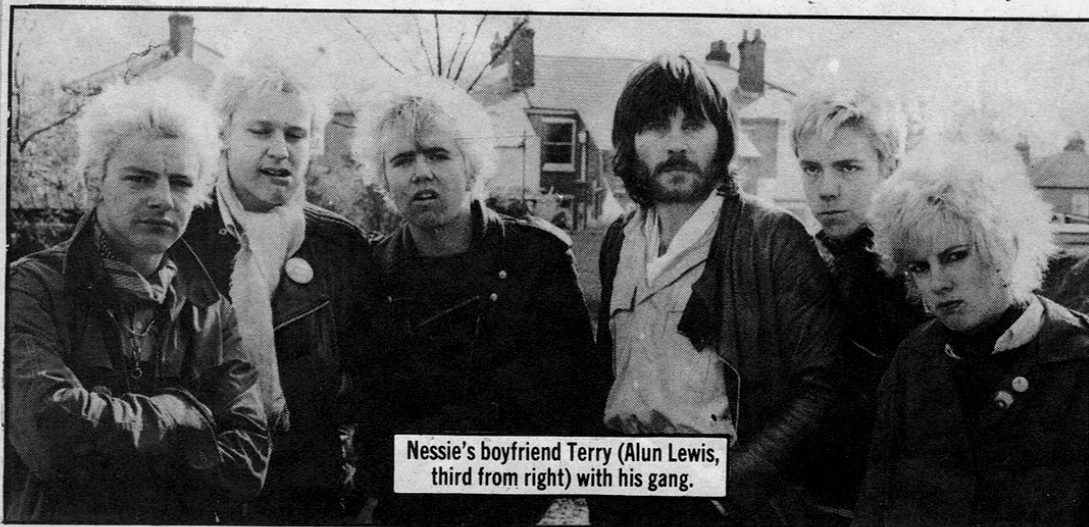
"They're a total contrast," he said. "Norman Mortimer is, in a way, the exact opposite of Bob. Bob was an open-minded, jokey, family sort of guy, a railway enthusiast and, mostly, with everything going smoothly and happily for him and his family. Norman's is a family of discontent, of rebellion. It's the story of the teenagers rebelling against the adult society in a very desperate situation. It's a marvellous thing for me to do because it's totally against my sort of personality — I'm more like Bob, really.

"As for Mortimer himself; I think there are some qualities in him that are in every father, in the sense that his priorities in this sort of situation are for his family. But because he's so single-minded about creating a good life for them he's blinkered to the rest of the world. I think he's quite sincere in his wanting to protect his family from the things that are happening to the country, but the only trouble is that he's so blinkered he doesn't really notice that they're drifting away, that they're actually taking up causes, such as the distribution of food to the elderly, starving and poor people."

David then moved on to talk about some of the other characters in the story:

"Norman's wife, May, played by Jean Rimmer, is of another generation, in a way. But exactly the right sort of person for him. She's totally loyal and devoted; she sees all the mistakes he's making but she will stand by him at all costs. She's almost a sort of martyr figure, really — torn between Norman and the children.

"The eldest daughter, Nessie, played by Annette Ekblom, is a real rebel — anti-father all the way. She joins up with a boy called Terry (Alun Lewis), whom her father despises because he's a 'layabout', and



Nessie's boyfriend Terry (Alun Lewis,
 third from right) with his gang.



FANFARE FOR YOUNG MUSICIANS



1979 winners: the Baroque Quartet.

Following the success of the last two series, Thames Television has launched a third year of Fanfare For Young Musicians.

Last year's winners were the Baroque Quartet, a group of eleven-year-olds from Cheetham's School of Music in Manchester (pictured left), whose prize was £1,200, and they join 1978 winners The Hollybush Eight, a recorder group from Londonderry, on the programme's role of honour.

Fanfare For Young Musicians is open to groups of youngsters up to and including the age of twelve (thirteenth birthday not before 1st December, 1980), and each group should consist of between three and eight youngsters. Schools and music teachers are invited to submit taped performances (on cassette only) for consideration, and each tape should consist of no more than two pieces, each lasting no longer than three minutes.

The best of these entrants will be auditioned at various venues around the country and from these, thirty finalists will be chosen to appear in the series which will be televised in the autumn from Thames' Studios at Teddington, Middlesex.

Any style of music is eligible — from brass bands and steel bands to singers and recorder players. If your group is interested, write to: Fanfare For Young Musicians, Thames Television Ltd., Teddington Studios, Teddington Lock, Middlesex, TW11 9NT, where entry forms are available. The closing date for entries is 14th April, 1980.

becomes the first one to break away from the kind of prison that Norman has built around them.

"Then there's Barry, played by Simon Gipps-Kent (you may remember him from *Midnight Is A Place*), from whose point of view the story is being told. He's totally against what his father's doing — his sympathies lie with friends who are running a distribution centre — but he tries his best to keep the peace at home between Nessie and their father.

"Geoff (Marcus Francis) is the only one who is like his father, and is very influenced by him. He's with dad right the way through, and then there's the youngest daughter, Ellen (Louise Olley) who is totally lost and bewildered by all that's going on."

One of the main characters outside the Mortimer family is Vince Holloway, a black marketeer and a very hard man who will get anything he can and exploit every situation. He's portrayed by comedian Mike Reid, and it's his first dramatic role. How does he shape up to it?

"He's very recognisable as Mike," said David, "and I don't mean that detrimentally. He's got a very forceful personality and he uses that forcefulness through the character of Vince. One would never know that he wasn't a very experienced player. He's great to work with and although there are lots of jokes going on away from the cameras, there's no playing around once a take is on and everything is straight down the line. He gives a very striking performance."

To sum up, how does David feel about the series as a whole?

"To me, having watched children's programmes and having children of my own," he said, "I think it's the biggest breakthrough in children's television that I've ever seen. I think at last it is actually talking reality, talking possible sense and it's not talking down to them. It's trying to reach them on their level and giving them a real situation. I think it's a tremendous breakthrough and I'm very excited by it."



The HOW team: (l to r) Jon Miller, Marian Davies, Jack Hargreaves and Fred Dinenage.

HOW'S THIS?

Southern Television's long-running **HOW** returns to the screen in a few months' time and here's a great opportunity for a Look-in reader to be a part of it.

The programme's producers want you to send them your own **HOW**, and the one they choose will be featured in the series. The winning Look-in reader will travel (with a parent or friend) to the studios at Southampton to see his or her **HOW** being made at the end of April.

Sounds interesting? Well, this is what you do . . .

Complete the coupon below, and attach it to your own favourite **HOW**, which must be complete with its answer. You can do this in words only, or — better — with illustrations, diagrams, etc. Send it to **HOW** (Look-in Suggestions), Southern Television, Northam, Southampton SO9 4YQ, to arrive not later than Tuesday, 8 April 1980. You must be under 16, and must not have any connection with Southern Television or ITV Publications Ltd.

The programme's research team will select the entry they feel is most interesting and most deserving of coverage on the show. Remember: you must send a complete **HOW** including an answer!

Send to **HOW** (Look-in Suggestions), Southern Television, Northam, Southampton SO9 4YQ.

I attach my **HOW**, complete with answer.

Its title is

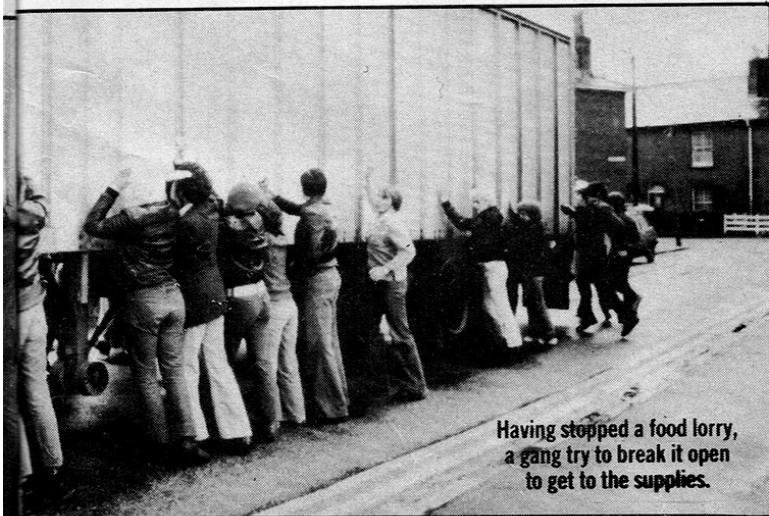
My name

My address

..... My age

My phone number (if any)

Closing date: Tuesday 8 April 1980.



Having stopped a food lorry, a gang try to break it open to get to the supplies.

Apollo learns the secret of the alien spaceship . . .

Battlestar GALACTICA™

© 1980 Universal City Studios, Inc. All rights reserved.
TM Battlestar Galactica is a trademark of and licensed by Universal City Studios, Inc.

ON THE PLANET THAR, SEPARATED FROM HIS COLLEAGUES OF BATTLESTAR GALACTICA BY AN INDUCED TIME-WARP, CAPTAIN APOLLO IS THE HONOURED GUEST OF SARANY AND THE COUNCIL OF ELDERS WHO RECOGNISE HIM AS A MAN OF PEACE. APOLLO IS SHOWN A MODEL OF A SPACE-SHIP MOUNTED BENEATH A WARP-ORIENTATED PROJECTOR...



AND THIS IS WHAT'S ACTUALLY BEEN SENT TO CONFRONT OUR BATTLESTAR? IN GIGANTICALLY MAGNIFIED FORM?

EXACTLY. TO THEM, IT LOOKS REAL. ENORMOUS, AND WE AWAIT THEIR REACTIONS.

MEANWHILE, WAY ABOVE THE PLANET, THE BLUE SQUADRON VIPERS HAVE SENSED SOMETHING OF THE TRUTH...



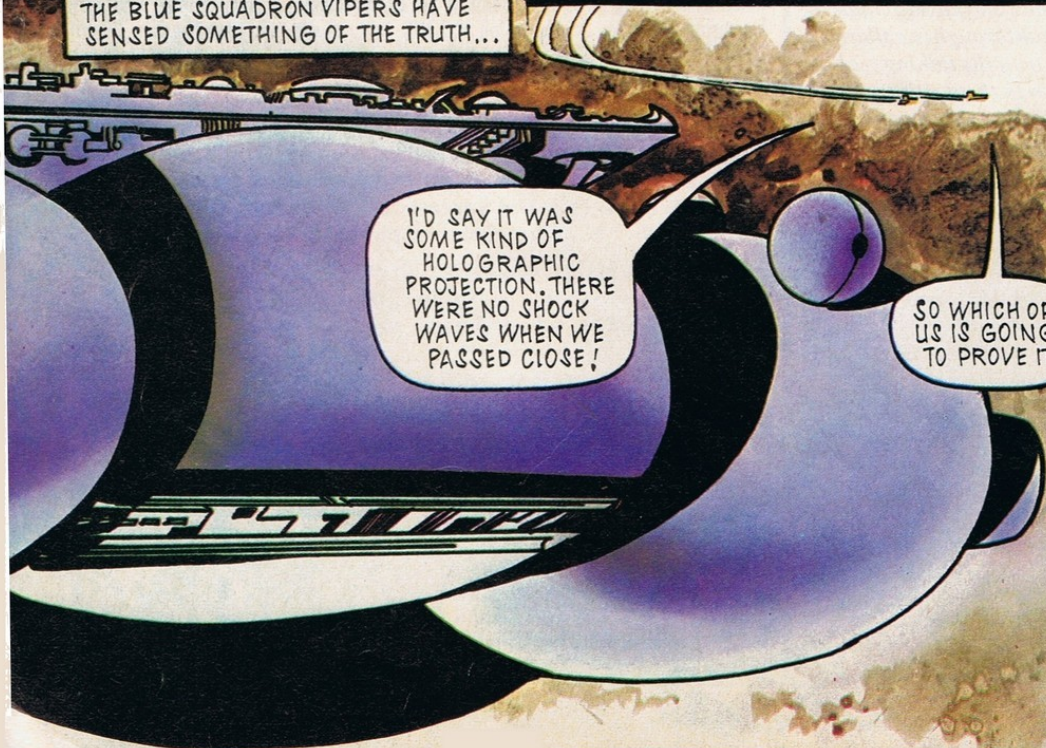
LOOK, SARANY. PUT YOURSELF IN THEIR PLACE. THEY'D BE ALARMED. FRIGHTENED. THEY CAN'T MAKE CONTACT WITH IT. AND TO THEM, I'VE UNACCOUNTABLY DISAPPEARED.

IF THEY ARE AS SENSIBLE AS YOU ARE, APOLLO, THEY WILL REMAIN CALM!



NO, THEY MAY NOT! IT ISN'T FAIR TO TEST THEM LIKE THIS! PUT ME IN TOUCH WITH THEM!

WE HAVE TO TEST THEM, CAPTAIN. OUR PLANET HAS ENJOYED PERFECT PEACE FOR CENTURIES. IF WE ALLOW NEWCOMERS IN, THEY **MUST** BE SEEN TO BE TRUSTWORTHY!



I'D SAY IT WAS SOME KIND OF HOLOGRAPHIC PROJECTION. THERE WERE NO SHOCK WAVES WHEN WE PASSED CLOSE!

SO WHICH OF US IS GOING TO PROVE IT?



CUT IT OUT, YOU TWO! IF IT IS AN IMAGE, THERE MAY BE ENERGY WITHIN IT THAT WE DON'T UNDERSTAND!



NEGATIVE, COMMANDER ADAMA! YOU WANT TO LEARN THE TRUTH ABOUT IT? ONLY ONE WAY TO FIND OUT!



STARBUCK PUTS HIS VIPER INTO A DIVE... SKIMS DANGEROUSLY CLOSE TO LIEUTENANT BOOMER'S FIGHTER...

DON'T DO IT, BUCK!

IF YOU'RE SOLID, I'M DONE FOR! IF YOU AIN'T...

CLOSER AND CLOSER THE VIPER HURTTLES TOWARDS ITS TARGET...

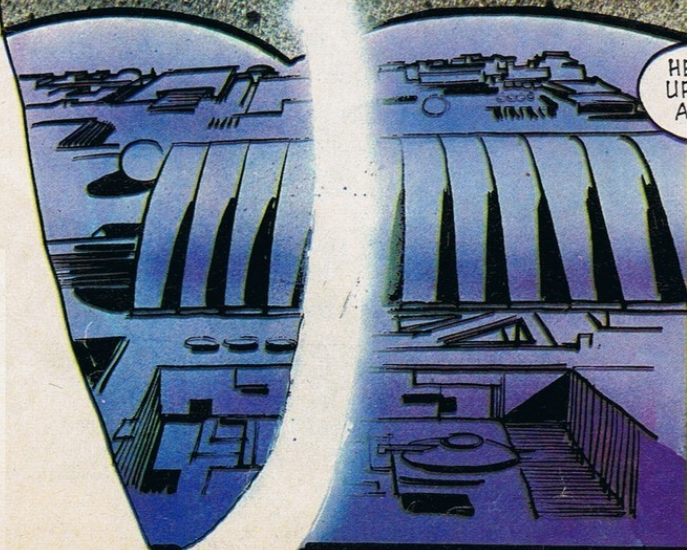
TALLY HOHHHHH!

AT THE LAST MOMENT, STARBUCK LOSES HIS NERVE! THE ALIEN LOOKS SO SOLID!

AAARGH! THE WINGS!



Martin



HE'S BREAKING UP! RESCUE SHUTTLE, ATHENA! AT ONCE!



POLICE FILE

ANDY

Lead Guitar

FULL NAME: Andrew James Summers
BIRTH PLACE: Blackpool
BIRTH SIGN: Capricorn
BIRTH DATE: 31st December
EYES: Blue
HAIR: Fair
HEIGHT: 1.70 metres (5' 7")
MARRIED: Yes, to Kate
CHILDREN: Daughter Layla
PREVIOUS GROUPS: The Animals, Soft Machine, Zoot Money, Kevin Coyne, Kevin Ayers and Eberhard Schoener
HOBBIES: Spending time with his family

Photograph by Tony Nutley

QUIZ

1 Who plays the title role in the new adventure film Black Jack?

2 Fill in the missing letters to give you the titles of three recent hits:
 a) TOU...O...U.H
 b) BA...
 c) B...Y...OV...OU

3 Can you name Britain's solitary gold medal winner in the Winter Olympics recently?

4 How many members of Elvis Costello's Attractions are there?

5 Who stars in the title role of Potter in the hilarious BBC comedy series?

6 Which sport is featured in the recent film release Breaking Away?

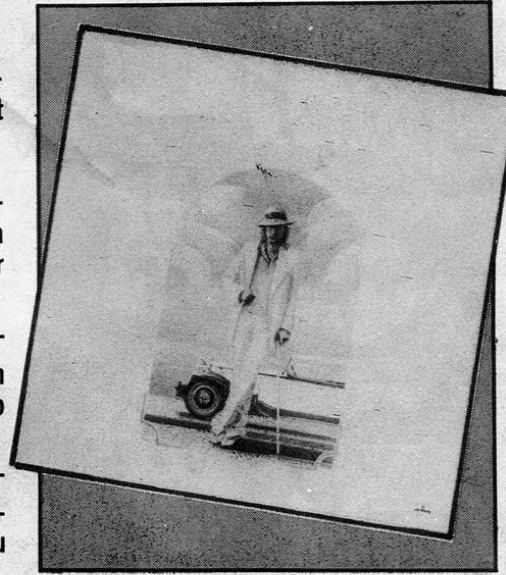
7 The Bucket Of Water Song is a famous number from which popular Saturday morning show?

8 Do you know who wrote the song in the above question and the pop group to which he once belonged?

9 Pictured below is the negative photograph of a top pop group. Can you name them?



10 SLEEVE SPOT: Can you identify this album cover with, of course, the give-away lettering deleted?



11 From which film is the picture above taken?

12 In Southern TV's Worzel Gummidge series' Worzel (below) was visited by his cousin from Australia. What is his name?



13 What title has Lord Soames held recently?

14 ANAGRAM: Re-arrange the following letters to give you the name of a drummer with a famous pop group: LORER TAGROY

ANSWERS

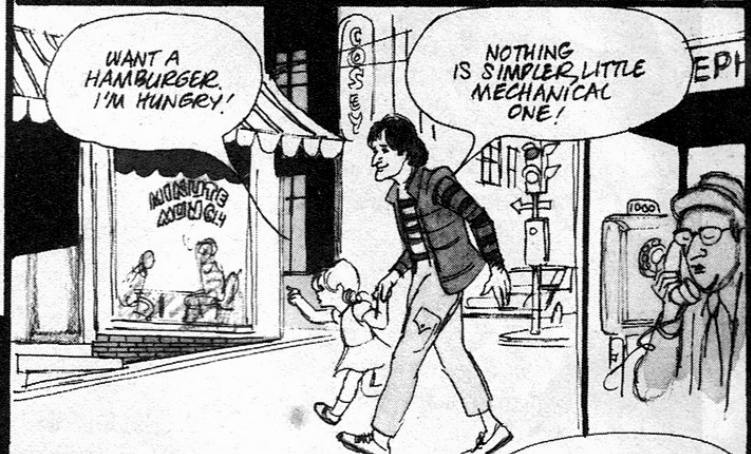
1 Jean Franval 2 a Touch Too Much b Babe c Baby I Love You 3 Robin Cousins 4 Three 5 Arthur Lowe 6 Cycling 7 Tiswas 8 John Gorman, Scaffold 9 Darts 10 The Best of Rod Stewart 11 Watership Down 12 Cobber Gum- midge 13 Governor of Zimbabwe Rhodesia 14 Roger Taylor (Queen).





TM designates a trademark licensed by Paramount Pictures Corporation

UNDER THE IMPRESSION THAT HE'S GOT HOLD OF A WALKING, TALKING DOLL FROM A STORE, MORK HAS UNWITTINGLY KIDNAPPED FLESH AND BLOOD - IN THE SHAPE OF SARAH, THE DAUGHTER OF A RICH SOCIALITE NAMED MRS BRADY, AND NOW HE'S LOST....



WANT A HAMBURGER. I'M HUNGRY!

NOTHING IS SIMPLER, LITTLE MECHANICAL ONE!



CAN YOU TELL ME WHERE WE ARE, SEAMY-FACE?

YOU'LL BE SEEIN' STARS IF YOU KEEP THAT UP, BUB!

JIMMY WUM



I HAVE SEEN MANY STARS ALREADY, THANK YOU. SURELY YOU ARE NOT A SPACE-TRAVELLER?

I CAN TRAVEL FAST ROUND THIS COUNTER AN' HOOP YOU OUTTA HERE, SHORTY!

IF SHE WASN'T SO YOUNG, I'D CHUCK YOU INTO THE STREET! EAT UP AND SCRAM, D'YOU HEAR?



YOU LEAVE MY FRIEND ALONE! HE'S NICE!



ANYTHING YOU SAY, RAILWAY FEATLERS!



HEY! WHY ARE YOU DIPPING YOUR FINGER IN YOUR MILKSHAKE, FUNNY MAN?

THAT IS THE WAY I DRINK. BUT YOU ARE BEGINNING TO PUZZLE ME!



YOU ARE NOT A DOLL AT ALL!

STOPPIT! YOU'RE - HEE HEE HEE - TICKLING!

© 1980 Paramount Pictures Corporation. All Rights Reserved

A BOGUS DOLL!
IF ONLY MINDY WAS
HERE, SHE COULD
TELL ME WHAT
THIS MEANS!



MINDY IS IN JAIL,
PLACED THERE BY
THE KID'S DISTRAUGHT
MOTHER....

LOOK, LADY, YOU WERE SEEN
TRYING TO SHOUT AFTER
THE KIDNAPPER. WHO
IS HE?



IT'S NO
USE! YOU'D
NEVER
BELIEVE
ME!

LOCK HER UP,
NOTIFY THE DUTY
SHRINK!

THE POLICE
PSYCHIATRIST?
RIGHT AWAY,
SARGE!



TRY
ME!!

HIS NAME'S
MORK. AND HE'S
FROM THE
PLANETORK!



MEANWHILE...

TELL ME,
LITTLE PHONEY
TALKING
DOLL, WHERE SHOULD
I TAKE YOU
NOW?

MINUT
MINUT

NOT BACK TO
MY MUMMY, SHE
NEVER LETS ME
GO OUT LIKE
THIS!

FOR GOODNESS
SAKE, MORK, COME
TO YOUR SENSES
AND GET ME
OUT OF
THIS...!



I DON'T KNOW
WHERE THEY PARK
FUNFAIRS IN THIS
PLACE! BUT YOU
SHOW ME!

TAKE ME
TO THE
FUNFAIR
PARK!



Look on your ITV programmes this week:

ANGLIA



SATURDAY

10.30 Tiswas
12.30 World Of Sport
5.15 Dick Turpin
5.45 Sale Of The Century
6.15 Saturday Film

SUNDAY

2.05 Match Of The Week
3.30 Sunday Film
5.00 The Further Adventures Of Oliver Twist
7.15 Family Fortunes

MONDAY

4.15 Clapperboard
4.45 The Famous Five
5.15 University Challenge
6.35 Crossroads
7.00 Kenny Everett Video Show

TUESDAY

3.45 Look Who's Talking
4.15 Pop Gospel
4.45 Magpie
7.30 You're Only Young Twice
8.00 Armchair Thriller

WEDNESDAY

4.15 The Sooty Show
4.45 Noah's Castle
5.15 Barney Miller
7.00 This Is Your Life
8.00 Comedy Tonight

THURSDAY

4.15 The Bubbles
4.25 Rocket Robin Hood
4.45 The Next Week Show
7.00 Movin' On
8.00 Armchair Thriller

FRIDAY

10.25 Film
3.00 Shoes Of The Fisherman
6.00 Easter Star Games
7.00 The Muppet Show
7.30 Bruce Forsyth

BORDER



SATURDAY

10.30 Tiswas
12.30 World Of Sport
5.15 Mork And Mindy
5.45 Dick Turpin
6.15 Saturday Movie

SUNDAY

2.45 The Big Match
4.45 Doctors And Nurses
5.00 The Further Adventures Of Oliver Twist
7.15 Family Fortunes

MONDAY

4.15 Clapperboard
4.45 The Famous Five
5.15 University Challenge
6.35 Crossroads
7.00 Kenny Everett Video Show

TUESDAY

4.15 Pop Gospel
4.45 Magpie
5.15 Father Dear Father
7.30 Survival
8.30 Armchair Thriller

WEDNESDAY

4.15 The Sooty Show
4.45 Noah's Castle
5.15 Happy Days
7.00 This Is Your Life
8.00 Comedy Tonight

THURSDAY

3.45 Looks Familiar
4.15 Thursday Matinee
7.30 George And Mildred
8.00 Armchair Thriller
8.30 Black Abbots

FRIDAY

10.25 Friday Film
3.00 Shoes Of The Fisherman
6.00 Easter Star Games
7.00 The Muppet Show
7.30 Bruce Forsyth

CHANNEL



SATURDAY

12.30 World Of Sport
5.20 Mork And Mindy
5.45 Dick Turpin
6.15 TV Movie
8.30 Enemy At The Door

SUNDAY

2.45 The Big Match
3.45 Sunday Matinee
5.00 The Further Adventures Of Oliver Twist
7.15 Family Fortunes

MONDAY

4.15 Clapperboard
4.45 The Famous Five
5.15 University Challenge
6.35 Crossroads
7.00 Kenny Everett Video Show

TUESDAY

4.15 Pop Gospel
4.45 Magpie
5.15 Bailey's Bird
7.00 Charlie's Angels
8.00 Armchair Thriller

WEDNESDAY

4.15 The Sooty Show
4.45 Noah's Castle
6.35 Crossroads
7.00 This Is Your Life
8.00 Comedy Tonight

THURSDAY

3.45 Looks Familiar
4.50 Little House On The Prairie
5.15 Emmerdale Farm
8.00 Armchair Thriller
8.30 Black Abbots

FRIDAY

2.00 International Showjumping
3.00 Shoes Of The Fisherman
6.00 Easter Star Games
7.00 The Muppet Show
7.30 Bruce Forsyth

GRAMPIAN



SATURDAY

10.30 Tiswas
12.30 World Of Sport
5.15 Dick Turpin
5.45 The Incredible Hulk
6.45 Action Film

SUNDAY

2.00 Sunday Matinee
4.00 Scotsport
5.00 The Further Adventures Of Oliver Twist
7.15 Family Fortunes

MONDAY

4.15 Clapperboard
4.45 The Famous Five
5.15 University Challenge
6.35 Crossroads
7.00 Kenny Everett Video Show

TUESDAY

3.45 Look Who's Talking
4.15 Pop Gospel
4.45 Magpie
7.00 A Man Called Sloane
8.00 Armchair Thriller

WEDNESDAY

4.15 The Sooty Show
4.45 Noah's Castle
5.15 Happy Days
7.00 This Is Your Life
8.00 Comedy Tonight

THURSDAY

3.45 Looks Familiar
4.15 Unaccustomed As I Am
7.00 Charlie's Angels
8.00 Armchair Thriller
8.30 Black Abbots

FRIDAY

10.25 Feature Film
3.00 Shoes Of The Fisherman
6.35 SportsCall
7.00 The Muppet Show
7.30 Bruce Forsyth

GRANADA



SATURDAY

10.30 Tiswas
12.30 World Of Sport
5.15 Chips
6.15 Dick Turpin
6.45 Action Adventure

SUNDAY

1.00 Space 1999
2.25 Kick Off Match
5.00 The Further Adventures Of Oliver Twist
7.15 Family Fortunes

MONDAY

4.15 Clapperboard
4.45 The Famous Five
5.15 Crossroads
6.30 Selwyn
7.00 Kenny Everett Video Show

TUESDAY

4.15 Pop Gospel
4.45 Magpie
5.15 Crossroads
7.00 The Incredible Hulk
8.00 Armchair Thriller

WEDNESDAY

3.45 Square One
4.20 The Sooty Show
4.45 Noah's Castle
7.00 This Is Your Life
8.00 Comedy Tonight

THURSDAY

3.45 Amazing World Of Kreskin
4.15 Salvage 1
7.00 BJ And The Bear
8.00 Armchair Thriller
8.30 The Black Abbots

FRIDAY

10.25 Film
3.00 Shoes Of The Fisherman
6.00 Easter Star Games
7.00 The Muppet Show
7.30 Bruce Forsyth

MIDLANDS



SATURDAY

10.30 Tiswas
12.30 World Of Sport
5.15 Mork And Mindy
5.45 Dick Turpin
6.15 Saturday Cinema

SUNDAY

1.55 Star Soccer
2.55 Weekend Matinee
5.00 The Further Adventures Of Oliver Twist
7.15 Family Fortunes

MONDAY

4.15 Clapperboard
4.45 The Famous Five
5.15 The Television Programme
6.35 Crossroads
7.00 Kenny Everett Video Show

TUESDAY

3.45 Look Who's Talking
4.15 Pop Gospel
4.45 Magpie
5.15 The Fantastic Four
7.30 Armchair Thriller

WEDNESDAY

4.15 The Sooty Show
4.45 Noah's Castle
5.15 Selwyn
7.00 This Is Your Life
8.00 Comedy Tonight

THURSDAY

3.45 Looks Familiar
4.20 Fangface
4.50 Salvage 1
7.30 Armchair Thriller
8.00 Spoon's Patch

FRIDAY

10.50 Feature Film
3.00 Shoes Of The Fisherman
6.00 Easter Star Games
7.00 The Muppet Show
7.30 Bruce Forsyth

SCOTTISH



SATURDAY

10.30 Tiswas
12.30 World Of Sport
5.15 Dick Turpin
5.45 Chips
6.45 How The West Was Won

SUNDAY

2.45 Bailey's Bird
4.00 Scotsport
5.00 The Further Adventures Of Oliver Twist
7.15 Family Fortunes

MONDAY

4.15 Clapperboard
4.45 The Famous Five
5.15 Cartoon
5.20 Crossroads
7.00 Kenny Everett Video Show

TUESDAY

3.45 Look Who's Talking
4.15 Pop Gospel
5.20 Crossroads
7.30 Love Thy Neighbour
8.00 Armchair Thriller

WEDNESDAY

4.15 The Sooty Show
4.45 Noah's Castle
6.30 Emmerdale Farm
7.00 This Is Your Life
8.00 Comedy Tonight

THURSDAY

3.45 Looks Familiar
4.15 Larry The Lamb
4.25 Little House On The Prairie
8.00 Armchair Thriller
8.30 Black Abbots

FRIDAY

10.25 Film
3.00 Shoes Of The Fisherman
6.30 Emmerdale Farm
7.00 The Muppet Show
7.30 Bruce Forsyth

SOUTHERN



SATURDAY

10.30 Tiswas
12.30 World Of Sport
5.15 Happy Days
5.45 Dick Turpin
6.15 Film

SUNDAY

1.00 Salvage 1
2.45 The Big Match
5.00 The Further Adventures Of Oliver Twist
7.15 Family Fortunes

MONDAY

4.15 Clapperboard
4.45 The Famous Five
5.15 Dick Tracy
5.20 Crossroads
7.00 Kenny Everett Video Show

TUESDAY

3.45 Look Who's Talking
4.15 Pop Gospel
4.45 Magpie
7.30 Doctor Down Under
8.00 Armchair Thriller

WEDNESDAY

4.15 The Sooty Show
4.45 Noah's Castle
5.20 Crossroads
7.00 This Is Your Life
8.00 Comedy Tonight

THURSDAY

3.45 Looks Familiar
4.15 Project UFO
6.30 University Challenge
7.30 Black Abbots
8.00 Armchair Thriller

FRIDAY

10.25 Film
3.00 Shoes Of The Fisherman
6.00 Easter Star Games
7.00 The Muppet Show
7.30 Bruce Forsyth

TYNE TEES



SATURDAY

9.00 Saturday Shake-up
12.30 World Of Sport
5.15 Happy Days
5.45 Dick Turpin
6.15 Film

SUNDAY

2.00 Sunday Matinee
4.00 Shoot
5.00 The Further Adventures Of Oliver Twist
7.15 Family Fortunes

MONDAY

4.15 Clapperboard
4.45 The Famous Five
5.15 Mork And Mindy
6.00 The Jetsons
7.00 Kenny Everett Video Show

TUESDAY

4.15 Pop Gospel
4.45 Magpie
5.15 How's Your Father
7.30 Survival
8.00 Armchair Thriller

WEDNESDAY

4.15 The Sooty Show
4.45 Noah's Castle
5.15 Bailey's Bird
7.00 This Is Your Life
8.00 Comedy Tonight

THURSDAY

4.15 Looks Familiar
4.15 The Lost Islands
4.45 Grizzly Adams
7.30 George And Mildred
8.00 Armchair Thriller

FRIDAY

10.25 Film
3.00 Shoes Of The Fisherman
6.00 Easter Star Games
7.00 The Muppet Show
7.30 Bruce Forsyth

ULSTER



SATURDAY

11.30 Sesame Street
12.30 World Of Sport
5.15 Happy Days
5.45 Dick Turpin
6.15 Feature Film

SUNDAY

2.45 The Big Match
3.45 Sunday Matinee
5.00 The Further Adventures Of Oliver Twist
7.15 Family Fortunes

MONDAY

4.15 Clapperboard
4.45 The Famous Five
5.15 Money-Go-Round
7.00 Kenny Everett Video Show
7.30 Coronation Street

TUESDAY

4.15 Pop Gospel
4.45 Magpie
5.20 Crossroads
7.30 Survival
8.00 Armchair Thriller

WEDNESDAY

4.15 The Sooty Show
4.45 Noah's Castle
5.20 Crossroads
7.00 This Is Your Life
8.00 Comedy Tonight

THURSDAY

3.45 Looks Familiar
4.15 Little House On The Prairie
7.30 George And Mildred
8.00 Armchair Thriller
8.30 Black Abbots

FRIDAY

10.25 Film
2.00 International Showjumping
3.00 Shoes Of The Fisherman
7.00 The Muppet Show
7.30 Bruce Forsyth

March 29 - April 4

HTV



SATURDAY

- 10.30 Tiswas
- 12.30 World Of Sport
- 5.15 Dick Turpin
- 5.45 Mind Your Language
- 6.15 Film

SUNDAY

- 2.45 The Big Match
- 3.45 Film
- 5.00 The Further Adventures Of Oliver Twist
- 7.15 Family Fortunes

MONDAY

- 4.15 Clapperboard
- 4.45 The Famous Five
- 6.35 Crossroads
- 7.00 Kenny Everett Video Show
- 7.30 Coronation Street

TUESDAY

- 4.15 Pop Gospel
- 4.45 Magpie
- 5.15 Emmerdale Farm
- 7.00 Charlie's Angels
- 8.00 Armchair Thriller

WEDNESDAY

- 4.15 The Sooty Show
- 4.45 Noah's Castle
- 5.15 Lightning
- 7.00 This Is Your Life
- 8.00 Comedy Tonight

THURSDAY

- 3.45 Looks Familiar
- 4.15 Little House On The Prairie
- 6.20 Crossroads
- 6.45 Film
- 8.00 Armchair Thriller

FRIDAY

- 10.25 Film
- 3.00 Shoes Of The Fisherman
- 6.00 Easter Star Games
- 7.00 The Muppet Show
- 7.30 Bruce Forsyth

LWT/THAMES



SATURDAY

- 10.30 Tiswas
- 12.30 World Of Sport
- 5.15 Happy Days
- 5.45 Dick Turpin
- 6.15 Saturday Cinema

SUNDAY

- 2.45 The Big Match
- 3.45 Sunday Matinee
- 5.00 The Further Adventures Of Oliver Twist
- 7.15 Family Fortunes

MONDAY

- 4.15 Clapperboard
- 4.45 The Famous Five
- 5.15 Cartoon
- 7.00 Kenny Everett Video Show
- 7.30 Coronation Street

TUESDAY

- 3.45 Look Who's Talking
- 4.15 Pop Gospel
- 4.45 Magpie
- 7.00 Charlie's Angels
- 8.00 Armchair Thriller

WEDNESDAY

- 4.15 The Sooty Show
- 4.45 Noah's Castle
- 6.30 Survival
- 7.00 This Is Your Life
- 8.00 Comedy Tonight

THURSDAY

- 4.15 Spiderman
- 4.45 Wyatt's Place
- 6.30 Sports Arena
- 7.30 Spooner's Patch
- 8.00 Armchair Thriller

FRIDAY

- 10.25 Film
- 12.00 The Muppet Show
- 3.00 Shoes Of The Fisherman
- 6.00 Easter Star Games
- 7.30 Bruce Forsyth

WESTWARD



SATURDAY

- 10.30 Tiswas
- 12.30 World Of Sport
- 5.20 Mork And Mandy
- 5.45 Dick Turpin
- 6.15 TV Movie

SUNDAY

- 2.45 The Big Match
- 3.45 Sunday Matinee
- 5.00 The Further Adventures Of Oliver Twist
- 7.15 Family Fortunes

MONDAY

- 4.15 Clapperboard
- 4.45 The Famous Five
- 5.15 University Challenge
- 6.35 Crossroads
- 7.00 Kenny Everett Video Show

TUESDAY

- 4.15 Pop Gospel
- 4.45 Magpie
- 5.15 Bailey's Bird
- 7.00 Charlie's Angels
- 8.00 Armchair Thriller

WEDNESDAY

- 4.15 The Sooty Show
- 4.45 Noah's Castle
- 6.35 Crossroads
- 7.00 This Is Your Life
- 8.00 Comedy Tonight

THURSDAY

- 3.45 Looks Familiar
- 4.20 Little House On The Prairie
- 5.15 Emmerdale Farm
- 8.00 Armchair Thriller
- 8.30 Black Abbots

FRIDAY

- 10.25 Feature Film
- 3.00 Shoes Of The Fisherman
- 6.00 Easter Star Games
- 7.00 The Muppet Show
- 7.30 Bruce Forsyth

YORKSHIRE



SATURDAY

- 10.30 Tiswas
- 12.30 World Of Sport
- 5.15 Happy Days
- 5.45 Dick Turpin
- 6.15 Action Adventure

SUNDAY

- 2.20 Football Special
- 3.15 How The West Was Won
- 5.00 The Further Adventures Of Oliver Twist
- 7.15 Family Fortunes

MONDAY

- 4.15 Clapperboard
- 4.45 The Famous Five
- 5.15 University Challenge
- 6.35 Crossroads
- 7.00 Kenny Everett Video Show

TUESDAY

- 4.15 Pop Gospel
- 4.45 Magpie
- 5.15 How's Your Father?
- 7.30 Survival
- 8.00 Armchair Thriller

WEDNESDAY

- 4.15 The Sooty Show
- 4.45 Noah's Castle
- 5.15 Mary Tyler Moore
- 7.00 This Is Your Life
- 8.00 Comedy Tonight

THURSDAY

- 3.45 Looks Familiar
- 4.15 Woody Woodpecker
- 4.45 Salvage 1
- 7.30 George And Mildred
- 8.00 Armchair Thriller

FRIDAY

- 10.25 Feature Film
- 3.00 Shoes Of The Fisherman
- 6.00 Easter Star Games
- 7.00 The Muppet Show
- 7.30 Bruce Forsyth

LOOK OUT FOR NEXT WEEK'S Look-in



The Bee Gees are our cover stars and inside you can find a super feature, a two-page colour pin-up and record competition. ★ There's a change of scenery in Brian Moore's Sports Arena when we focus on the Boat Race and take a look at the world of Table Tennis. ★ There's a special Young Cooks' Club which tells you all about Easter traditions and how to make Easter bonnets — to eat! There's also a look at the programmes coming your way for Easter on ITV. ★ Watch out, too, for lots of great prizes in another of our exclusive competitions. ★ All this plus your regular features and picture strip favourites like Worzel Gummidge (above), Charlie's Angels (below) and Benny Hill.



SO MAKE SURE OF YOUR Look-in NEXT WEEK! ORDER YOUR COPY NOW!

★ Your newsagent will happily reserve or deliver your copy of Look-in each week. Just think — no more sold-out issues, no more missed pin-ups, competitions, stories etc! ★ If you'd like to order your copy complete the form on the right (with the signature of your parent or guardian) and hand it to your newsagent. He'll do the rest!

TO MY NEWSAGENT:

Please reserve* deliver* a copy of Look-in each week, commencing with the next issue.
(*Tick whichever you require)

My name is

My address is

*Signed

(*Please ask your parent or guardian to sign this.)

THIS WILL GET YOU STAMPING

WITH GLEE

THE GREAT Kellogg's STAMP OFFER



THE NICEST BUG YOU'LL EVER CATCH

... HAVE GOT TOGETHER TO BRING YOU

KELLOGG'S AND THE STAMP BUG...

THIS SEND-SATIONAL (GROAN) OFFER



A FREE STARTER KIT FOR COLLECTING BRITISH STAMPS.

A COVER BEARING FIVE POST MARKED STAMPS COMMEMORATING THE OPENING OF THE MANCHESTER - LIVERPOOL RAILWAY.

Kellogg's CORN FLAKES

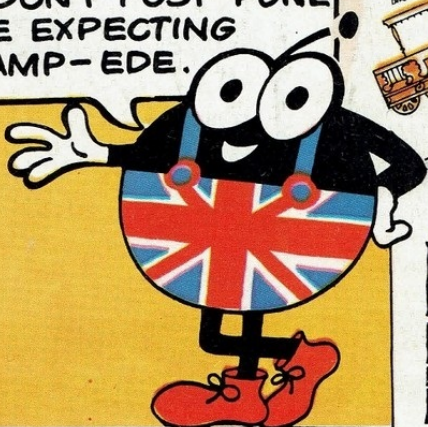
The Original and Best



Exclusive to Kellogg's
FREE BRITISH STAMPS
see back for details

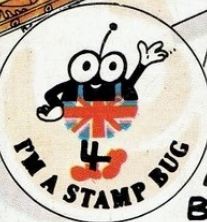
SEE DETAILS ON SPECIAL KELLOGG'S CORN FLAKES PACKS.

BUT DON'T POST-PONE WE'RE EXPECTING A STAMP-EDE.



Mr. J. Smith,
5 Albany Court,
PONTEFRAC T,
Yorkshire,
WF8 3OE

Collecting British Stamps



AND A STAMP BUG BADGE.

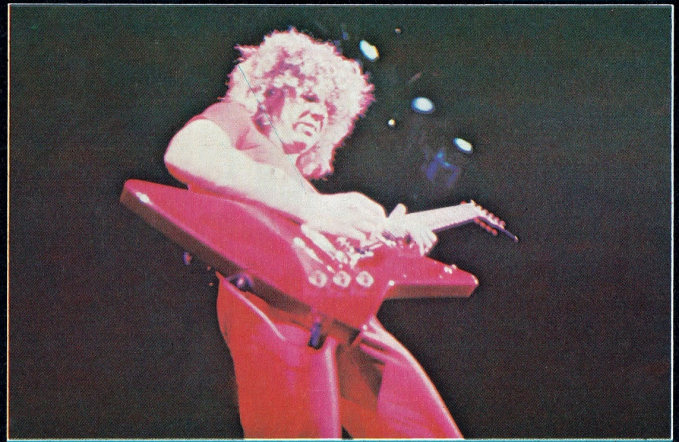
Kellogg's Corn Flakes.

The best to you each morning.

DEF LEPPARD



SAMMY HAGAR



JUDAS PRIEST



MOTORHEAD



RAINBOW



RUSH



VAN HALEN



UFO



Rock Shows

UPI

UPI